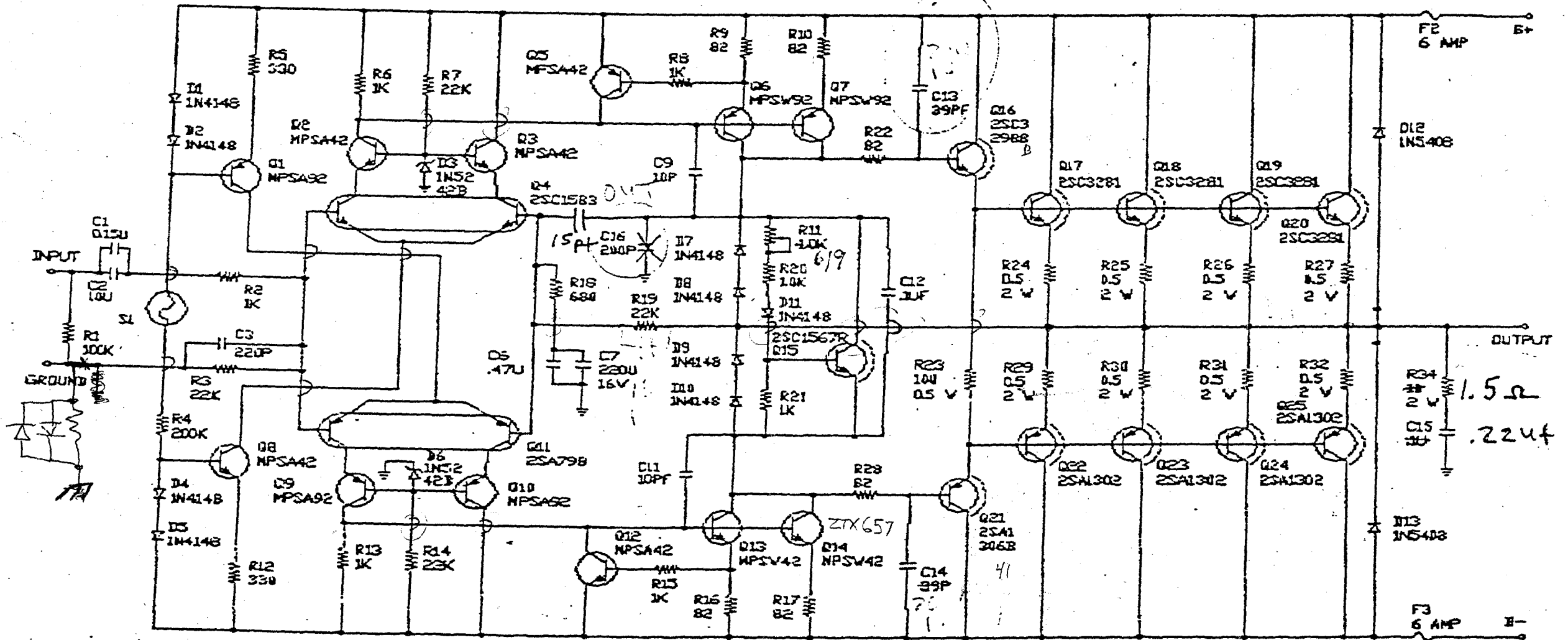


CHANGES: C13 → 200pf
 C14 → 200Pf
 C15 → .22uf
 C16 → OUT

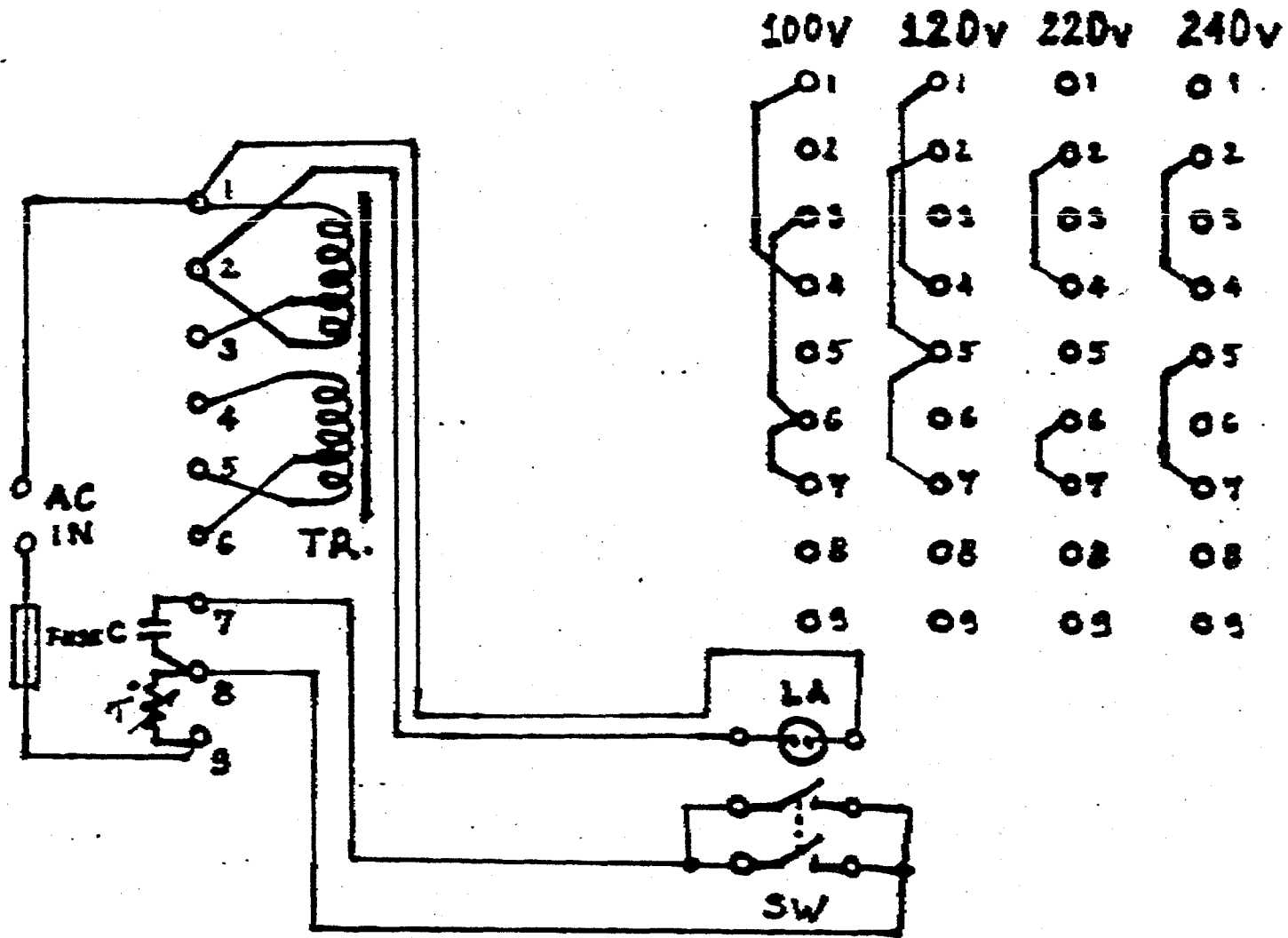
R34 → 1.5Ω

A-250

15 PF SILVER MICA ADDED ACROSS R19



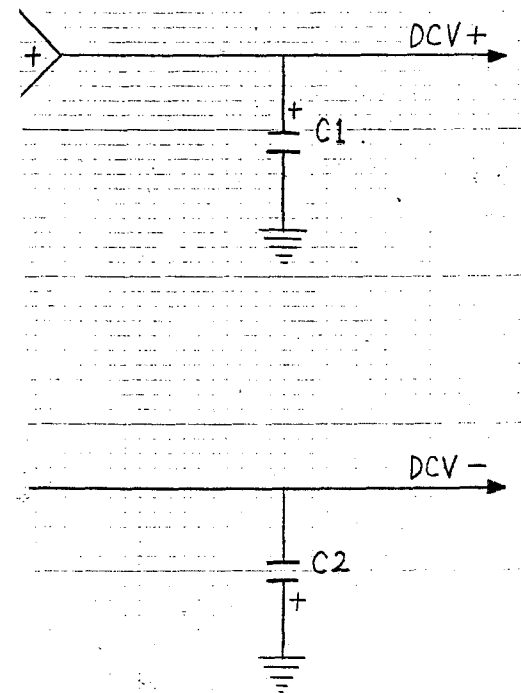
NOTES UNLESS OTHERWISE SPECIFIED
 1. RESISTOR VALUES IN OHMS, 1/4W, 1%
 2. CAPACITOR VALUES IN PICO FARADS



ACURUS A250 VOLTAGE SELECTOR HOOK-UP
DIA-100

4-18-91

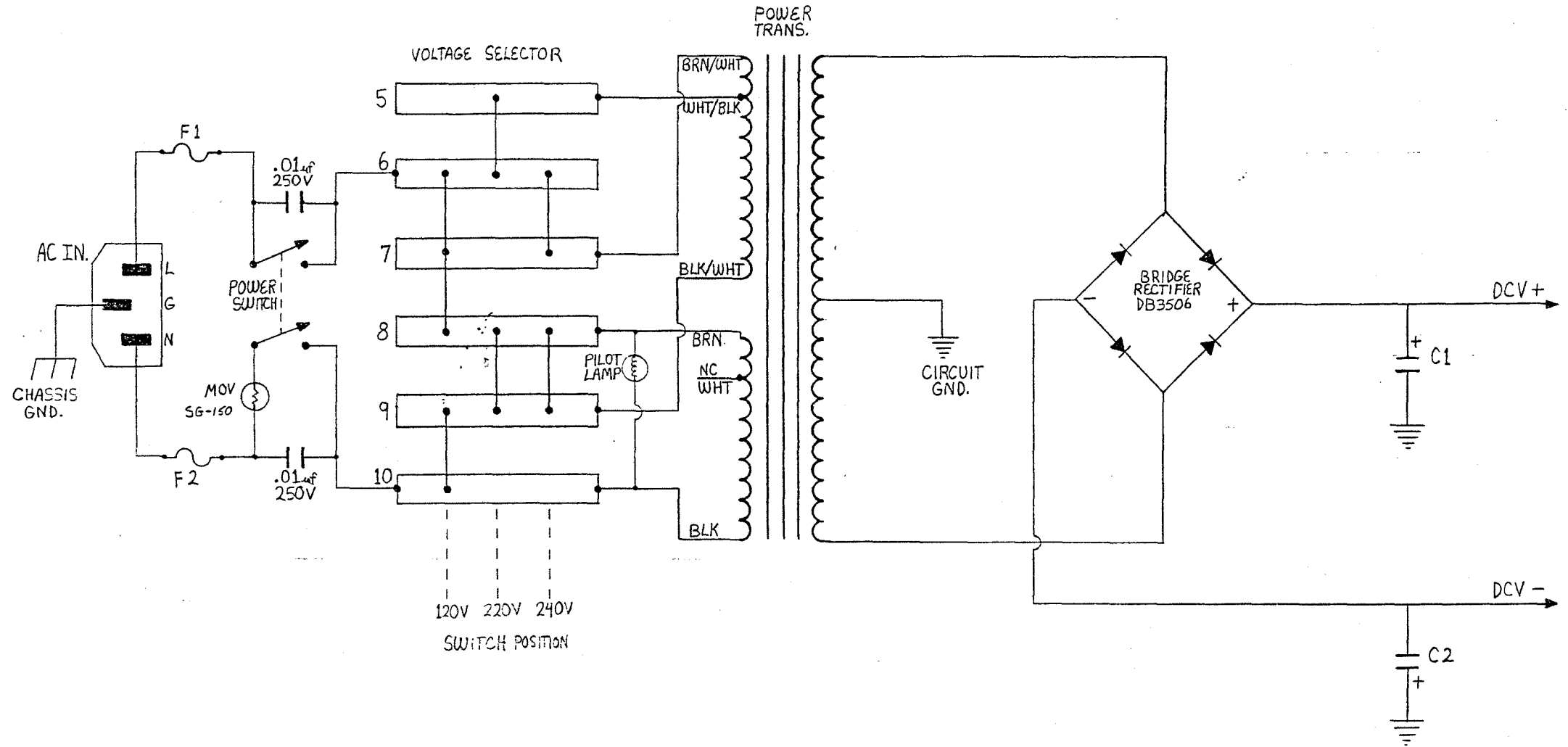
COMPONENT	DIA-100	A-250
F1, F2	3A SB	5A SB
C1, C2	18000 μ F 70VDC	23000 μ F 85VDC
RAIL VOLT. DCV \pm	60VDC	80VDC
POWER TRANSFORMER	15-0039	15-0038



ACURUS - POWER SUPPLY (DIA 100/A250)

MONDIAL DESIGNS, LTD.

COMPONENT	DIA-100	A-250
F1, F2	3A SB	5A SB
C1, C2	18000 μ F 70VDC	23000 μ F 85VDC
RAIL VOLT. DCV \pm	60VDC	80VDC
POWER TRANSFORMER	15-0039	15-0038



DRAWN BY ROLAND P. MARCINI 2/93