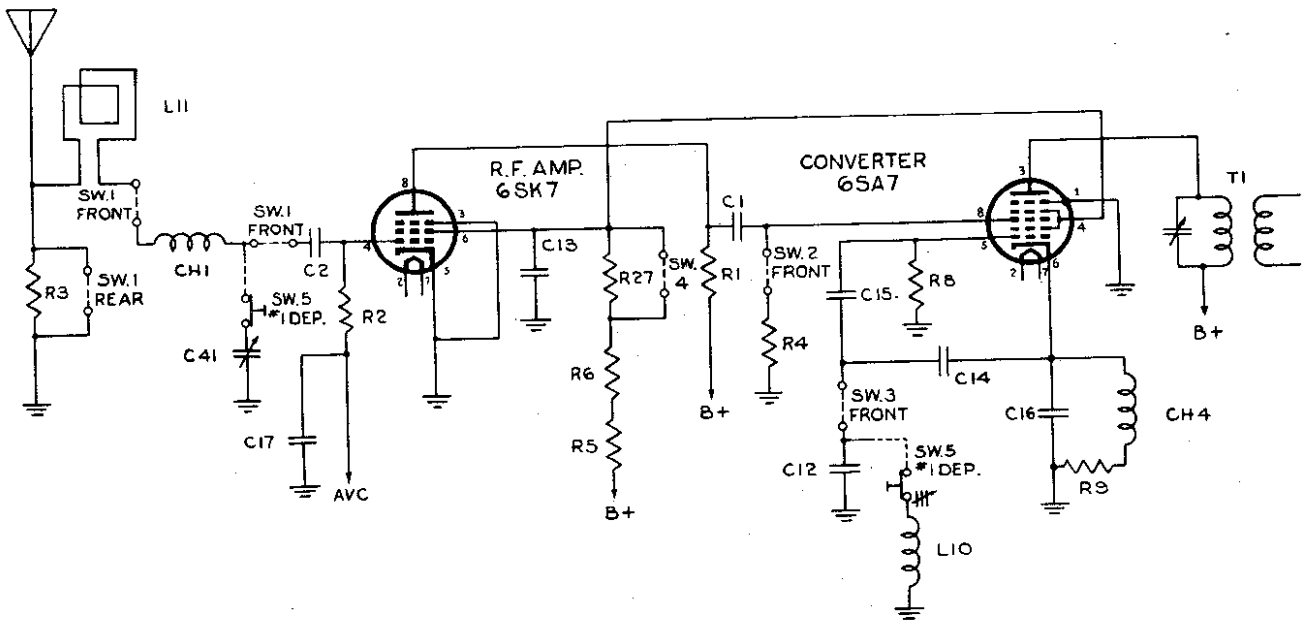


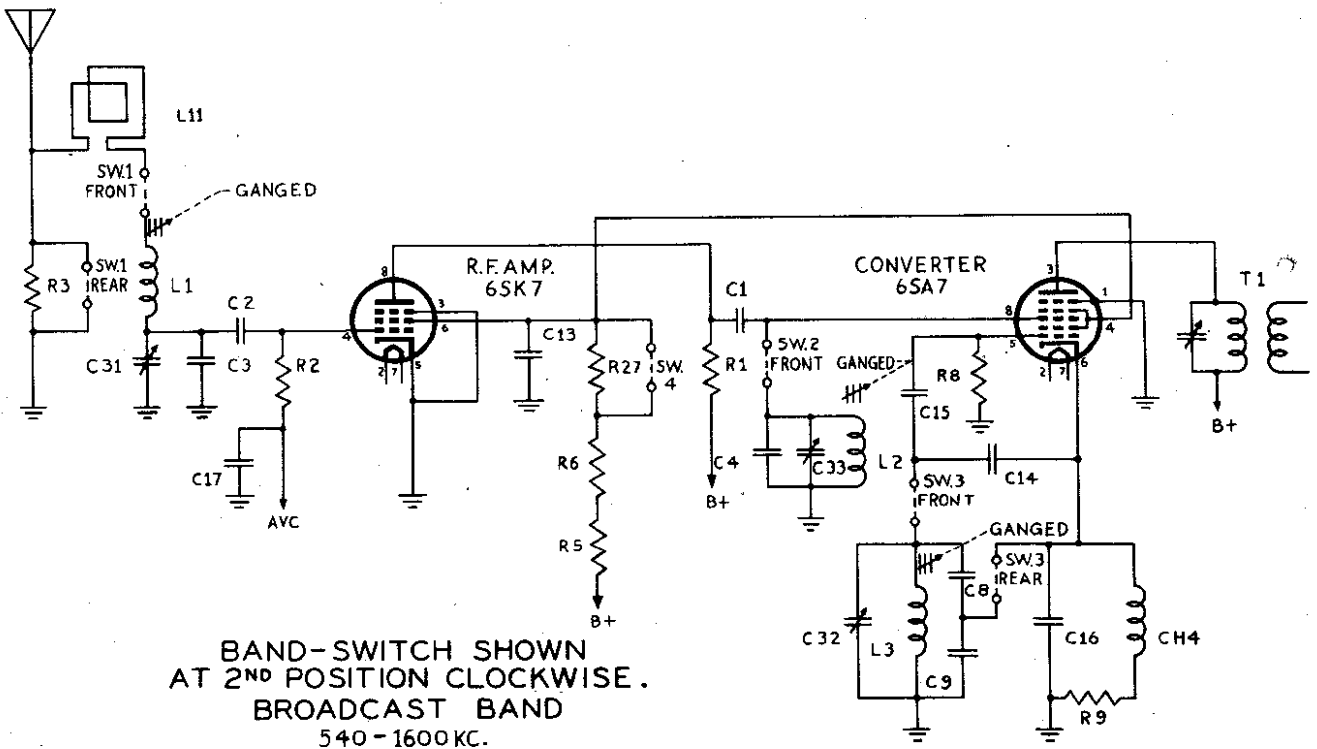
"clarified schematics"

MODEL 10A1

ADMIRAL CORPORATION



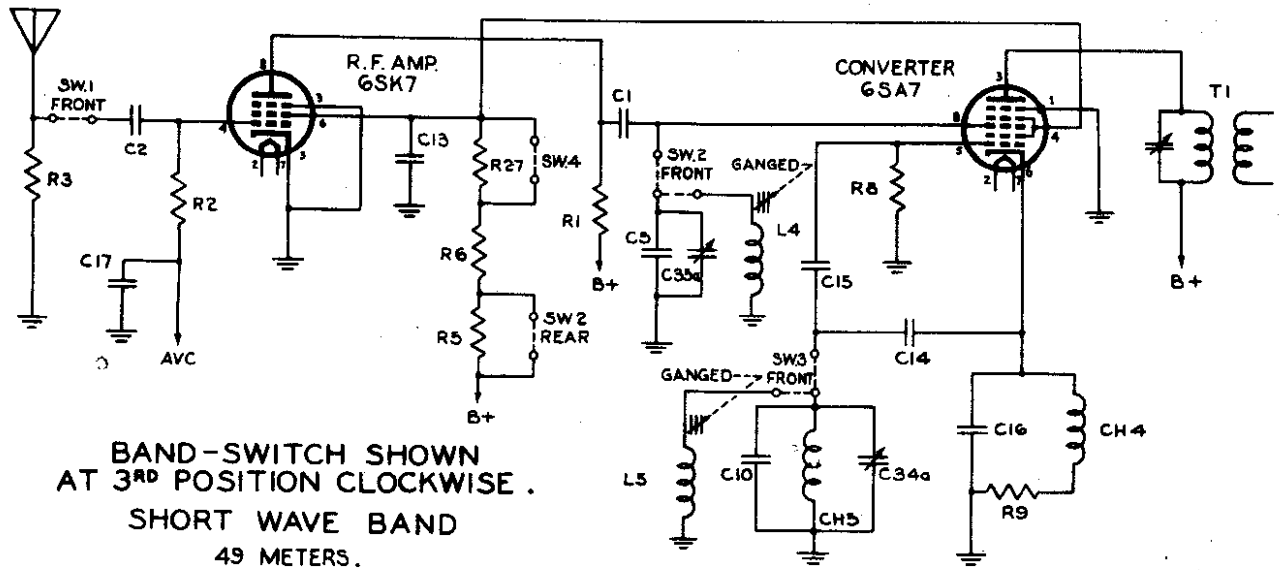
BAND-SWITCH SHOWN AT 1ST POSITION.
 PUSH BUTTON TUNING
 (BUTTON #1 DEPRESSED)
 795-1600 KC.



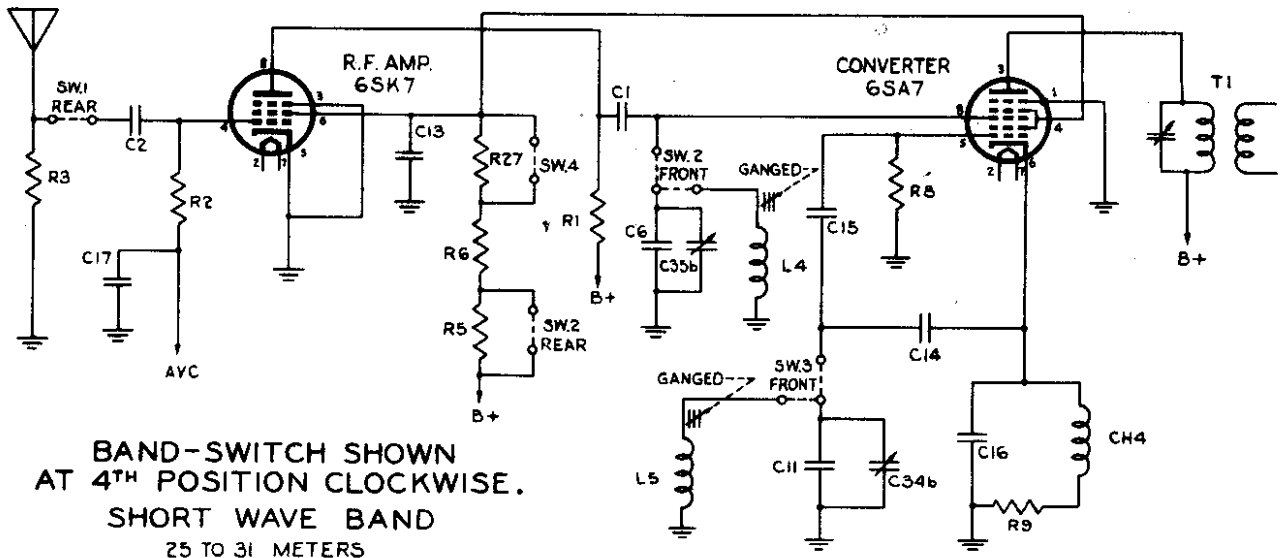
BAND-SWITCH SHOWN AT 2ND POSITION CLOCKWISE.
 BROADCAST BAND
 540 - 1600 KC.

ADMIRAL CORPORATION

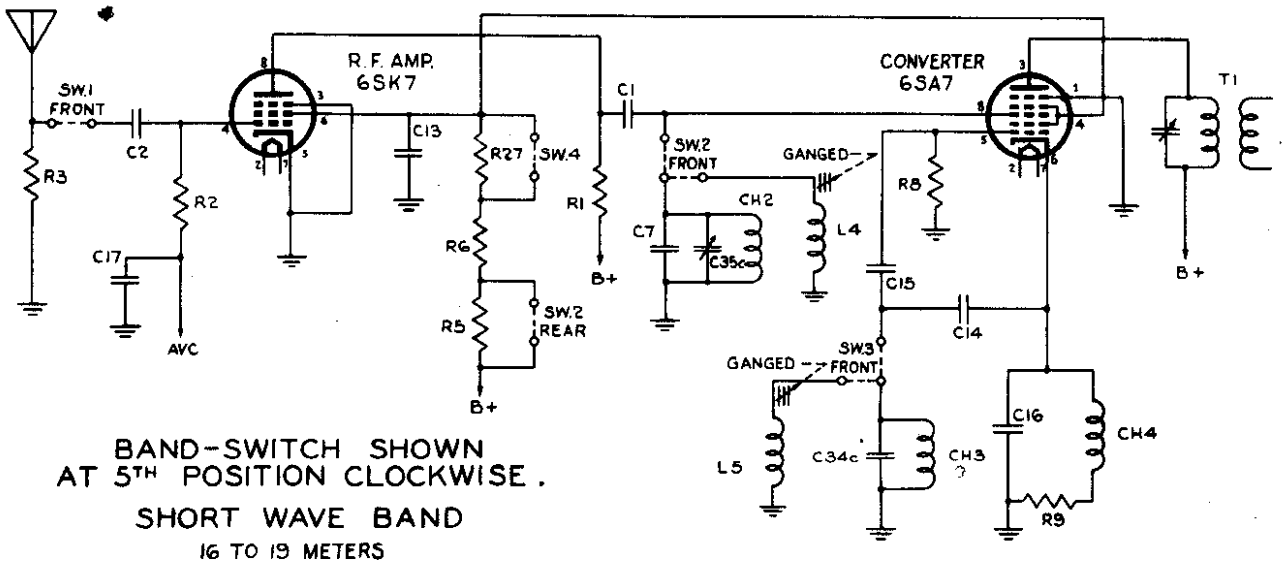
MODEL 10A1



BAND-SWITCH SHOWN AT 3RD POSITION CLOCKWISE. SHORT WAVE BAND 49 METERS.



BAND-SWITCH SHOWN AT 4TH POSITION CLOCKWISE. SHORT WAVE BAND 25 TO 31 METERS

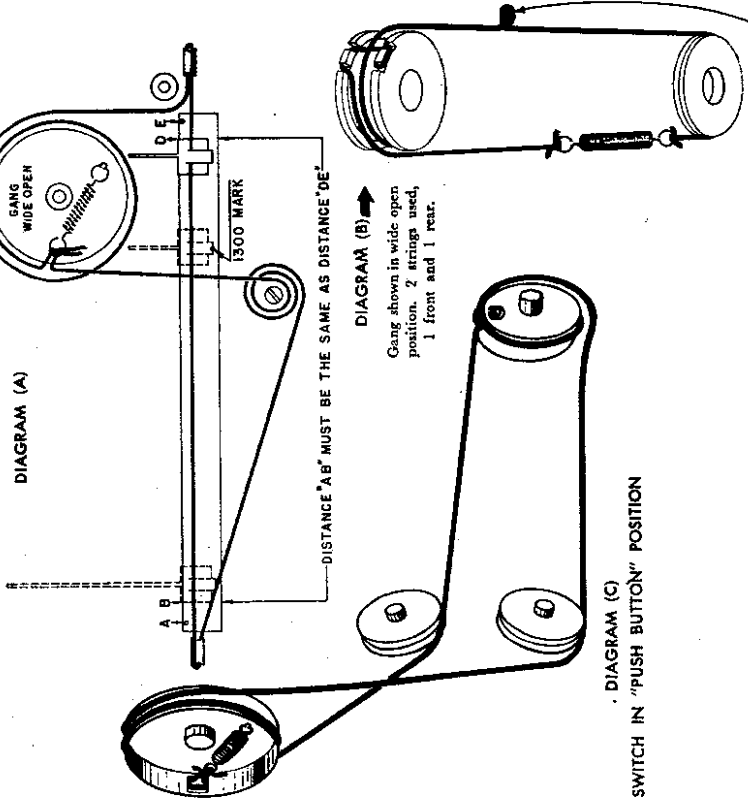


BAND-SWITCH SHOWN AT 5TH POSITION CLOCKWISE. SHORT WAVE BAND 16 TO 19 METERS

MODEL 10A1

ADMIRAL CORPORATION

STRINGING DIAGRAMS



CONNECTION TO SLUG GANG TUNER

Move the dial pointer by means of the tuning control knob to see that it reaches the upper and lower limits as shown on stringing diagram (A). In the upper limit position measure the distance D, E and in the lower limit position measure the distance A, B. The distance from A and B must be the same as the distance D and E. If these distances are not equal, unclamp and move the pointer slide on the string until they are the same. The pointer should be checked again at the upper and lower limit to be sure that it is right. Take care to see that the pointer does not slip during this operation. Reclamp the pointer slide tightly to the string and seal with any quick-drying cement. Set the tuning gang wide open and proceed with operation 3.

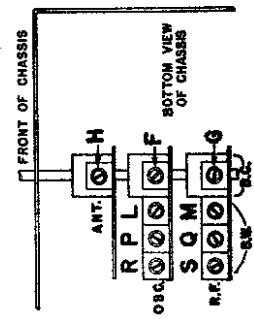
REPLACING TUNING SLUG

If it becomes necessary to change a tuning slug proceed in the following manner: Set the gang to its wide open position, unsolder and remove the old slug. Set the slug adjusting screw about half way down. Place the new slug in such a position that 1/8 inch of its length is above the coil form. Solder it in this position making sure that it does not slip during the operation and that the slug wire is straight. Proceed to realign the set as shown in the chart.

POINTER ADJUSTMENT

Move the dial pointer by means of the tuning control knob to see that it reaches the upper and lower limits as shown on stringing diagram (A). In the upper limit position measure the distance D, E and in the lower limit position measure the distance A, B. The distance from A and B must be the same as the distance D and E. If these distances are not equal, unclamp and move the pointer slide on the string until they are the same. The pointer should be checked again at the upper and lower limit to be sure that it is right. Take care to see that the pointer does not slip during this operation. Reclamp the pointer slide tightly to the string and seal with any quick-drying cement. Set the tuning gang wide open and proceed with operation 3.

TRIMMER LAYOUTS



ALIGNMENT PROCEDURE

- Loop must be connected during alignment. Check the set screws that hold the drum down to the shaft to see that they are tight and that the drum has not slipped on the shaft. The correct position of the drum can be seen on stringing diagram (A).
- In the wide open position the step on the rear of the dial drum must be against the step post.
- With the gang wide open, all slugs should be 1/8 inch out of their coil forms. If there is any serious deviation of if there has been any tampering, turn the adjusting screws until this distance is corrected. (See paragraph on Tuning Slug Replacement)
- Be sure both the set and the signal generator are thoroughly warmed up before starting alignment.
- Turn receiver Volume Control full on.
- Use lowest output setting on meter.
- Proceed in sequence as outlined below.

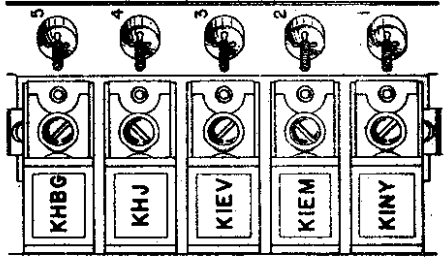
| STEP | SIGNAL GENERATOR TO CONNECT | DUMMY ANTENNA BETWEEN RADIO AND SIGNAL GENERATOR | SIGNAL GENERATOR FREQUENCY | TUNING GANG SETTING | ADJ. TRIMMERS IN FOLLOWING ORDER TO MAX. |
|------|--|---|----------------------------|---|--|
| 1 | 6SA7 Grid (Pin #8) | .1 MFD. | 455 K.C. | Pointer to upper limit | E, D, C, B, A |
| 2 | Before proceeding to step 3 check pointer travel as outlined under paragraph below headed "Pointer Adjustment." Set Band Change Switch to Broadcast Position. | | | | |
| 3 | White Loop Lead | 10 MMFD. If not available wrap several turns of the generator lead around the white loop lead. | 1605 K.C. | Pointer to upper limit | F, G, H |
| 4 | White Loop Lead | | 1900 K.C. | Set Pointer to 1300 mark on slide rail (See Dial Diagram A) | I, J, K |
| 5 | Set Band Change Switch to 49 Meter Position. | | | | |
| 6 | White Loop Lead | 400 Ohms | 7.5 Mc. | Pointer to upper limit | L, M |
| 7 | White Loop Lead | 400 Ohms | 7.2 Mc. | Set Pointer to 1300 mark on slide rail | N, O |
| 8 | Set Band Change Switch to 31-25 Meter Position. | | | | |
| 9 | White Loop Lead | 400 Ohms | 12.5 Mc. | Pointer to upper limit | P, Q |
| 10 | Set Band Change Switch to 19-16 Meter Position. | | | | |
| 11 | White Loop Lead | 400 Ohms | 18.0 Mc. | Pointer to upper limit | R, S |

PROCEDURE FOR SETTING UP PUSH BUTTONS

| Push Button | Frequency Range |
|-------------|----------------------|
| 1 | 795 K.C. - 1600 K.C. |
| 2 & 3 | 635 K.C. - 1430 K.C. |
| 4 & 5 | 540 K.C. - 1260 K.C. |

Remove the excitation covering the push button control unit. Pick the first of the 5 chosen stations. This should be of the proper frequency for button number 5. Set the band switch to broadcast and accurately tune in the station. Now turn the band switch to the push button position and adjust slug screw number 5 until the same station comes in with its loudest volume. Adjusters should be on the left of volume control and adjuster tuning the station to its maximum volume. Set the rest of the cell just as above, being the station to its maximum volume. Set the rest of the push buttons in a like manner, one for each of the stations chosen.

Note: Since each oscillator (slug) in the push button unit will tune over the entire broadcast band, (540 K.C.-1600 K.C.), care should be taken to set the stations within the frequency ranges associated with each button.



ADMIRAL CORPORATION

REPLACEMENT PARTS

RESISTORS

| Symbol | Description | Part Number |
|--------|-------------------------|-------------|
| R1 | 10,000 Ohms, 1 Watt | 60B14-103 |
| R2 | 470,000 Ohms, 1/2 Watt | 60B8-474 |
| R3 | 47,000 Ohms, 1/2 Watt | 60B8-473 |
| R4 | 470,000 Ohms, 1/2 Watt | 60B8-474 |
| R5 | 8,200 Ohms, 1 Watt | 60B14-822 |
| R6 | 10,000 Ohms, 5 Watt | 61A1-3 |
| R8 | 22,000 Ohms, 1/2 Watt | 60B8-223 |
| R9 | 100 Ohms, 1/2 Watt | 60B8-101 |
| R10 | 1,500 Ohms, 1/2 Watt | 60B8-152 |
| R11 | 1,500 Ohms, 1/2 Watt | 60B8-152 |
| R12 | 470 Ohms, 1/2 Watt | 60B8-471 |
| R13 | 1,000 Ohms, 1/2 Watt | 60B8-102 |
| R14 | 470,000 Ohms, 1/2 Watt | 60B8-474 |
| R15 | 47,000 Ohms, 1/2 Watt | 60B8-473 |
| R16 | 270,000 Ohms, 1/2 Watt | 60B8-274 |
| R17 | 1.0 Megohm, 1/2 Watt | 60B8-105 |
| R18 | 270,000 Ohms, 1/2 Watt | 60B8-274 |
| R19 | 1,000 Ohms, 1/2 Watt | 60B8-102 |
| R20 | 270,000 Ohms, 1/2 Watt | 60B8-274 |
| R21 | 470,000 Ohms, 1/2 Watt | 60B8-474 |
| R22 | 470,000 Ohms, 1/2 Watt | 60B8-474 |
| R23 | 470,000 Ohms, 1/2 Watt | 60B8-474 |
| R24 | 270 Ohms, 2 Watt | 60B20-271 |
| R25 | 47,000 Ohms, 1/2 Watt | 60B8-473 |
| R26 | 100,000 Ohms, 1/2 Watt | 60B8-104 |
| R27 | 150,000 Ohms, 1/2 Watt | 60B8-154 |
| R28 | 1 Megohm Volume Control | 75B3-3 |
| R29 | 1 Megohm, 1/2 Watt | 60B8-105 |
| R30 | 1 Megohm, 1/2 Watt | 60B8-105 |

CONDENSERS

| Symbol | Description | Part Number |
|--------|-----------------------|-------------|
| C1 | 20 mmfd. Mica | 65B7-5 |
| C2 | 200 mmfd. Mica | 65B7-21 |
| C3 | 35 mmfd. Silver Mica | 65B1-30 |
| C4 | 390 mmfd. Silver Mica | 65B1-34 |
| C5 | 250 mmfd. Silver Mica | 65B1-35 |
| C6 | 65 mmfd. Silver Mica | 65B1-27 |
| C7 | 40 mmfd. Silver Mica | 65B1-36 |
| C8 | 140 mmfd. Silver Mica | 65B1-26 |
| C9 | 1000 mmfd. Mica | 65B7-33 |
| C10 | 200 mmfd. Silver Mica | 65B1-14 |
| C11 | 15 mmfd. Silver Mica | 65B5-3 |
| C12 | 60 mmfd. Silver Mica | 65B5-13 |
| C13 | .1 mfd. 400 Volts | 64B1-20 |
| C14 | 50 mmfd. Mica | 65B5-11 |
| C15 | 50 mmfd. Mica | 65B5-11 |
| C16 | 250 mmfd. Mica | 65B5-22 |
| C17 | .05 mfd. 200 Volts | 64B1-32 |
| C18 | 20 mmfd. Mica | 65B5-5 |
| C20 | .1 mfd. 400 Volts | 64B1-20 |
| C21 | 50 mmfd. Mica | 65B5-11 |
| C22 | 50 mmfd. Mica | 65B5-11 |
| C23 | .002 mfd. 600 Volts | 64B1-14 |
| C24 | 500 mmfd. Mica | 65B5-27 |
| C25 | .005 mfd. 600 Volts | 64B1-12 |
| C26 | .005 mfd. 600 Volts | 64B1-12 |
| C27 | .005 mfd. 600 Volts | 64B1-12 |
| C28 | .005 mfd. 600 Volts | 64B1-12 |
| C29 | 250 mmfd. Mica | 65B5-22 |
| C30a | 30 mfd. 350 Volts | 67C6-25 |
| C30b | 30 mfd. 350 Volts | |
| C30c | 20 mfd. 25 Volts | |
| C31 | 3-40 mmfd. } Trimmer | 66A12-5 |
| C32 | 3-40 mmfd. } | |
| C33 | 3-40 mmfd. } | |
| C34a | 3-40 mmfd. } Trimmer | 66B8-3 |
| C34b | 3-40 mmfd. } | |
| C34c | 3-40 mmfd. } | |
| C35a | 3-40 mmfd. } Trimmer | 66B8-3 |
| C35b | 3-40 mmfd. } | |
| C35c | 3-40 mmfd. } | |
| C36 | .002 mfd., 600 Volts | 64B1-14 |
| C37 | .001 mfd., 600 Volts | 64B1-15 |
| C38 | .005 mfd., 600 Volts | 64B1-12 |
| C39 | .01 mfd., 400 Volts | 64B1-25 |
| C40 | .005 mfd., 600 Volts | 64B1-12 |
| C41 | 12-170 mmfd. Trimmer | 66A12-1 |
| C42 | 25-290 mmfd. Trimmer | 66A12-2 |
| C43 | | |
| C44 | 40-400 mmfd. Trimmer | 66A12-3 |
| C45 | | |
| C46 | .002-600 volts | 64B1-14 |

CHOKES, COILS & TRANSFORMERS

| Symbol | Description | Part Number |
|--------|-----------------------------------|-------------|
| CH1 | Choke, Antenna | AB103-6 |
| CH2 | Choke, R.F. S.W. | AB103-31 |
| CH3 | Choke, Oscillator, S. W. | AB103-31 |
| CH4 | Choke, Oscillator, Cathode | AB103-1 |
| CH5 | Choke, Oscillator, 49 Meter Shunt | AB103-5 |

| | | |
|-----|---------------------------------|---------|
| L1 | Coil, Tuning (Antenna B.C.) | AC105-2 |
| L2 | Coil, Tuning (B.C., R.F.) | AB100-1 |
| L3 | Coil, Tuning (B.C., Oscillator) | AC101-2 |
| L4 | Coil, Tuning (S.W., R.F.) | AD102-2 |
| L5 | Coil, Tuning (S.W., Oscillator) | AD102-4 |
| L6 | Coils, Push Button, Tuning | AB100-4 |
| L7 | | |
| L8 | | |
| L9 | | |
| L10 | | |
| L11 | Loop (B.C. Antenna) | AC112 |
| T1 | Transformer, 1st I.F. | 72B7 |
| T2 | Transformer, 2nd I.F. | 72B12 |
| T3 | Transformer, 3rd I.F. | 72B8 |
| T4 | Transformer, Power | 80B2 |
| T5 | Transformer, Output | 79A1 |

SWITCHES, PLUGS & SOCKETS

| | | |
|-----|---------------------------------|--------|
| SW1 | Switch, Antenna Circuit | 76B6-2 |
| SW2 | Switch, R.F. Circuit | 76B6-4 |
| SW3 | Switch, Oscillator Circuit | 76B6-3 |
| SW4 | Switch, Phono Radio | 76A3 |
| SW5 | Switch in Station Selector Unit | 76B5 |
| SW6 | Switch in Tone Control Unit | 76B4 |
| S1 | Socket, Station Selector Unit | 87A4-1 |
| P1 | Plug, Station Selector Unit | 88A3-1 |
| S2 | Socket, Tone Control Unit | 87A4-1 |
| P2 | Plug, Tone Control Unit | 88A3-1 |
| S3 | Socket, Speaker | 87A6-1 |
| P3 | Plug, Speaker | 98A2 |
| S4 | Socket, Phono Connector | 88A1 |
| S5 | Phono Motor Cord & Socket | 89A6-9 |

CABINET & SLIDE-A-WAY PARTS

| | |
|-------------------------------------|---------|
| Left Door Bracket | 15B70-1 |
| Right Door Bracket | 15B70-2 |
| Slide Rail | 15A71 |
| Bracket Stop | 15A72 |
| Hub, Door Bracket | 27A13 |
| Roller, Door Bracket | 27A14 |
| Hub, Slide Roller (Slide-A-Way) | 27A11 |
| Roller, Slide (Slide-A-Way) | 27A12 |
| Bracket Assembly (Slide-A-Way) | G400C42 |
| Switch & Cover (Slide-A-Way) | 77B1-44 |
| Plug, Aiden 20" Leads (Slide-A-Way) | 82A6-18 |
| Escutcheon, Cover Plate (left) | 23B4-1 |
| Escutcheon, Cover Plate (right) | 23B4-2 |
| Escutcheon, Dial Mounting | 23C3 |
| Escutcheon, Lower Rail | 23B5-2 |
| Escutcheon, Switch (Slide-A-Way) | 401A67 |

PHONOGRAPH PARTS

See Record Changer Service Manual for Detailed List

| | |
|---------------------------|-----------|
| Centerpost | G400A12-2 |
| Crystal Cartridge | 409A1 |
| Idler Wheel (407B3 Motor) | G400A23 |
| Idler Wheel (407B2 Motor) | G400A59 |
| Idler Wheel (407B1 Motor) | G400A57 |
| Plug, Phonograph Output | 88A2-1 |

MISCELLANEOUS

| | |
|----------------------------------|---------|
| Bulbs, Pilot Light, Mazda No. 47 | 81A1-8 |
| Dial Cord, 100 inches | 50A1-3 |
| Dial, Scale Glass | 21C21 |
| Drum, Band Indicator | A1200 |
| Drum, Dial Tuning | A1194 |
| Knobs (Walnut) | 33A12-1 |
| Letter, Call Push Button | 42A1 |
| Plug, Coil Mounting | 32A3-1 |
| Pointer, Dial | 25A6-1 |
| Push Button, Numbers 1 and 5 | 33B6-1 |
| Push Button, Numbers 2 and 4 | 33B6-2 |
| Push Button, Number 3 | 33B6-3 |

When Ordering Slugs Specify Color Code

| | |
|--|---------|
| Slug, Tuning (B.C., R.F.) (B.C., Osc.) | 71B1-3 |
| Slug, Tuning (B.C. Antenna) | 71B1-13 |
| Slug, Tuning (S.W., R.F.) (S.W., Osc.) | 71B1-9 |
| Slug, Push Button Unit | 71B1-14 |
| Socket, Pilot Light | 82A2-1 |
| Speaker, 10" Dynamic | 78B12 |
| Spring, Hairpin for mounting coils | 19A3-1 |
| Stud, Slug Adjusting | 27A4 |
| Tube, Pilot Light Cover | 82A3-1 |