

MODELS 4D11, 4D12, 4D13, CHASSIS 4D1

ADMIRAL CORPORATION

RESISTORS

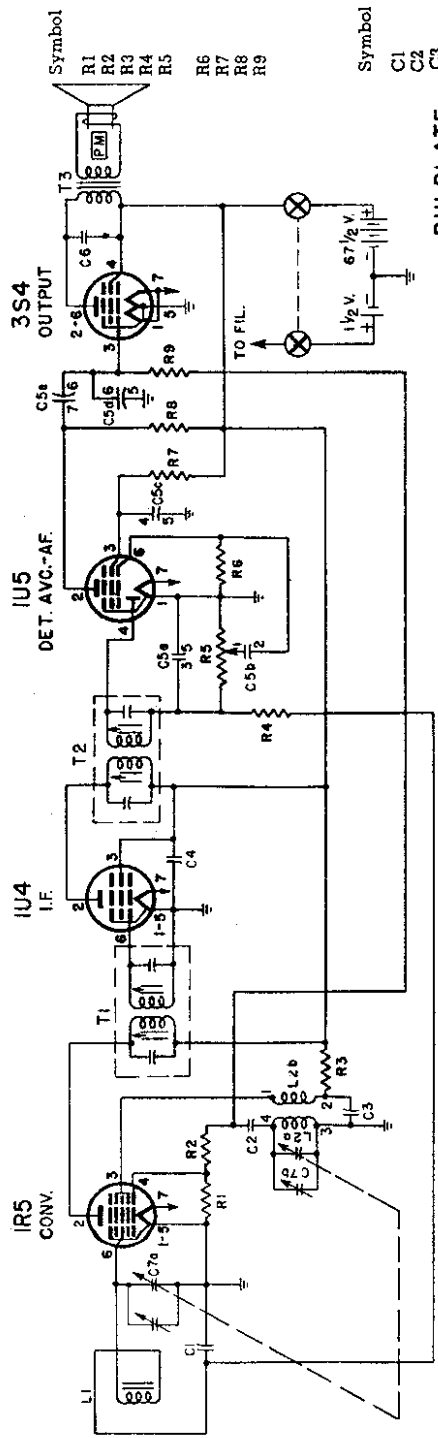
Part No.	Value
47,000 Ohms, 1/4 Watt	60B 3-473
560 Ohms, 1/4 Watt	60B 2-561
10,000 Ohms, 1/4 Watt	60B 3-103
3.3 Megohms, 1/4 Watt	60B 3-335
1 Megohm Volume Control and Switch SWL	75B 1-22
10 Megohms, 1/4 Watt	60B 3-106
4.7 Megohms, 1/4 Watt	60B 3-475
1 Megohm, 1/4 Watt	60B 3-105
2.2 Megohms, 1/4 Watt	60B 3-225

CONDENSERS

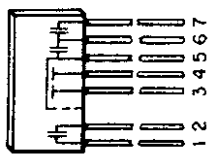
Symbol	Value	Part No.
C1	.01 mfd., 600 Volts, Paper	64B 1-10
C2	.0001 mfd., Ceramic	65B 6-3
C3	1 mfd., 200 Volts, Paper	64B 1-30
C4	.25 mfd., 200 Volts, Paper	64B-128
C5a	150 mmfd., Ceramic	Bulplate
C5b	.002 mfd., Ceramic	60A 2
C5c	.006 mfd., Ceramic	See Schematic
C5d	100 mmfd., Ceramic	60A 2
C5e	.005 mfd., Ceramic	See Schematic
C6	.002 mfd., 600 Volts, Paper	64B 1-14
C7a	0 to 354 mmfd., Gang	68B 13
C7b	0 to 107.2 mmfd., Gang	68B 13

COILS, TRANSFORMERS, ETC.

Symbol	Part No.	
L1	Antenna, Loop	69B 38
L2a	Coil, Oscillator	69A 39-1
L2b	Transformer, 1st IF	72B 2B-1
T1	Transformer, 2nd IF	72B 2B-1
T2	Transformer, Output	98A 13
T3	Speaker (3 1/2" PM) & Output Transformer	78C 33
SWI	Switch, On-Off	Part of R5

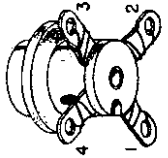


BULPLATE



NOTE: C5a, C5b, C5c, C5d and C5e are contained in a single unit (Bulplate). The numbers next to the C5 condenser plates on the schematic correspond to the lead numbers as shown on the drawing of the "BULPLATE" (see inset). If sections of this unit should open or short it will not be necessary to replace the entire Bulplate. Replace the bad section with a condenser of proper value. Note that leads 5 and 6 are common to more than one section.

OSCILLATOR COIL



NOTE: Some microphonic howling may occur on strong signals if the volume control is turned beyond the overload point. The following changes have been made in late production because some "B" batteries, with high internal resistance, may cause squealing at normal volume levels.
 (a) Condenser C3 (.005 mfd., 600 volt, oscillator plate bypass) has been replaced with a .1 mfd., 200 volt, condenser.
 (b) Condenser C6 (.002 mfd., 600 volt, 3S4 plate bypass) has been returned to the screen grid (pin 4) rather than to ground.
 (c) The speaker leads have been reversed, the red lead has been

connected to the plate and the blue lead to the screen of the 3S4.
 (d) For early production chassis which do not have the above changes, the same results can usually be secured by adding a mid., 200 volt electrolytic condenser from B+ to chassis. Be sure the condenser is connected in the circuit on the set side of the on-off switch. Do not connect it to the battery side of the switch or the inherent leakage of the condenser will appreciably shorten the "B" battery life.

CABINET PARTS

Description	Part No.
Cabinet (Includes Body, Handle & Escutcheon)	
Maroon (4D11)	34D 16-5
Ebony (4D12)	34D 16-10
Ivory (4D13)	34D 16-15
Cabinet Base	
Maroon (4D11)	34D 16-2
Ebony (4D12)	34D 16-7
Ivory (4D13)	34D 16-12
Handles (includes two drive lock pins)	
Maroon (4D11)	34D 16-3
Ebony (4D12)	34D 16-8
Ivory (4D13)	34D 16-13

CABINET PARTS (Continued)

Description	Part No.
Knob, Tuning	
Maroon (4D11)	33B 29-1
Ebony (4D12)	33B 29-3
Ivory (4D13)	33B 29-5
Knob, Volume Control	
Maroon (4D11)	33B 29-2
Ebony (4D12)	33B 29-4
Ivory (4D13)	33B 29-6
Grill Cloth	36B 3-6
Washer, Felt (used under Knobs)	5A 4-7

MISCELLANEOUS

Description	Part No.
Clip (with leads) for "B" Battery	90A 5-1
Compression Ring for knob	19A 31-2
Contact Plate for "A" Battery	15A 261
Grommet, Fibre (for "A" Battery)	12A 13-4
Snap Button, Antenna	19A 13-2
Tube Socket	87A 3-4
Wing Nut	2A 5-5
Screw, No. 8-32x3/4	80-2750-C2-2

