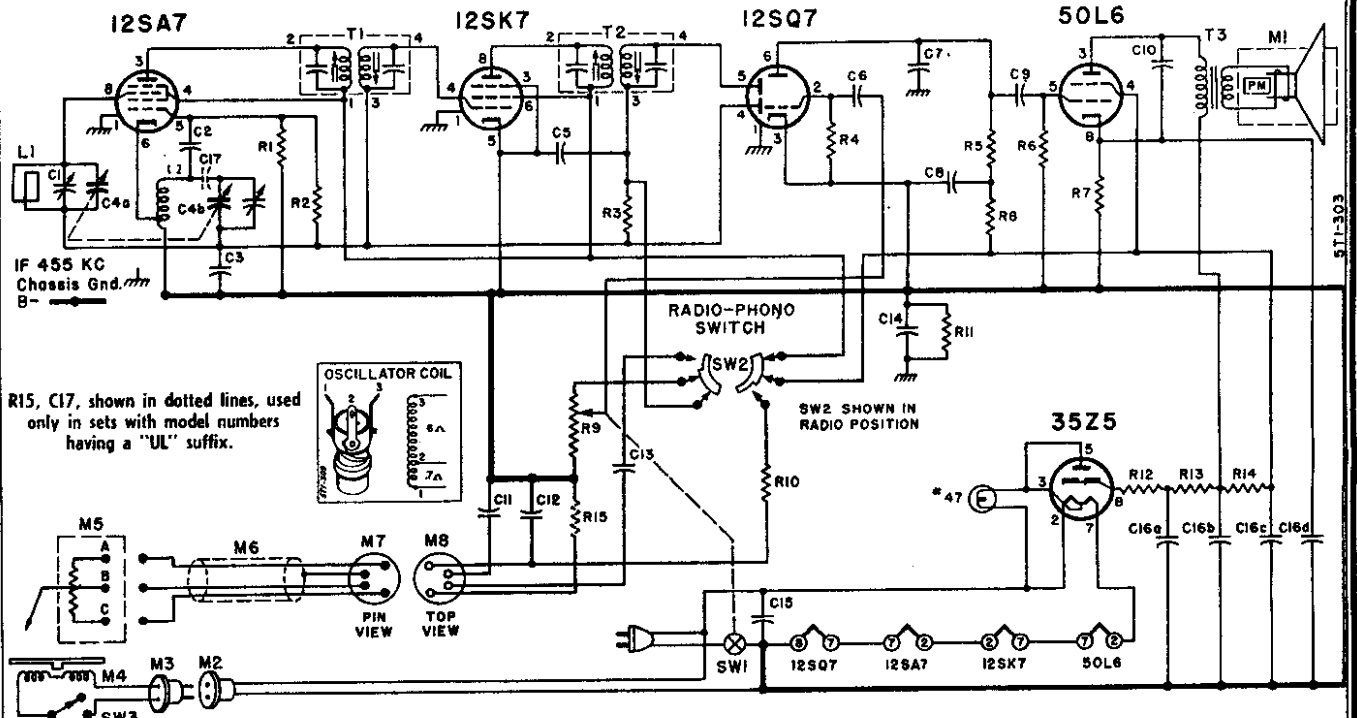


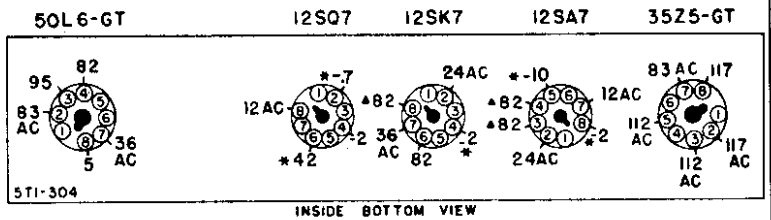
ADMIRAL CORP.

MODEL 5T12,  
CHASSIS 5T1



**VOLTAGE DATA**

- All readings made between tube socket terminals and B minus (terminal of On-Off switch).
- Switch in "Radio" position.
- Measured on 117 Volt AC line.
- Volume control minimum; dial turned to low frequency end.
- Voltages measured with Vacuum Tube Voltmeter. Readings taken with a 1000 ohm-per-volt meter will be approximately the same except for those marked with an asterisk \* in the voltage chart; these readings will either be lower or practically zero.



\* If taken with a 1000 ohm-per-volt meter, readings will be lower or practically zero.  
▲ On "Phono" these voltages will be zero. All other DC readings may be slightly higher.

**RESISTORS**

Symbol	Description	Part No.
R1	22,000 Ohms, 1/2 Watt	60B 8-223
R2	10 Megohms, 1/2 Watt	60B 8-106
R3	1 Megohm, 1/2 Watt	60B 8-105
R4	4.7 Megohms, 1/2 Watt	60B 8-475
R5	470,000 Ohms, 1/2 Watt	60B 8-474
R6	470,000 Ohms, 1/2 Watt	60B 8-474
R7	150 Ohms, 1 Watt	60B 14-151
R8	47,000 Ohms, 1/2 Watt	60B 8-473
R9	1 Megohm Volume Control	75B 1-32
R10	22,000 Ohms, 1/2 Watt	60B 8-223
R11	150,000 Ohms, 1/2 Watt	60B 8-154
R12	33 Ohms, 1 Watt	60B 28-3
R13	220 Ohms, 1 Watt	60B 28-7
R14	1,000 Ohms, 1 Watt	60B 28-2
R15	33,000 Ohms, 1/2 Watt	60B 8-333

(R15 used only in sets with model numbers having a "UL" suffix)

**CONDENSERS**

Symbol	Description	Part No.
C1	Trimmer, 3 to 30 mmfd.	Part of L1
C2	50 mmfd., Ceramic	65B 6-4
C3	.1 mfd., 200 Volts, Paper	64B 1-30
C4a	0 to 420 mmfd. } Gang	68B 20-1
C4b	0 to 108 mmfd. }	
Note—Gang spot welded to dial drum.		
C5	250 mmfd., Ceramic	65B 6-5
C6	.01 mfd., 400 Volts, Paper	64B 1-25
C7	500 mmfd., Ceramic	65B 6-6
C8	.1 mfd., 200 Volts, Paper	64B 1-30
C9	.01 mfd., 400 Volts, Paper	64B 1-25
C10	.03 mfd., 400 Volts, Paper	64B 1-23
C11	.05 mfd., 400 Volts, Paper	64B 1-22
C12	.18 mfd., 200 Volts, Paper	64A 2-2

Symbol	Description	Part No.
C13	.001 mfd., 600 Volts, Paper	64B 1-15
C14	.18 mfd., 200 Volts, Paper	64A 2-2
C15	.05 mfd., 400 Volts, Paper	64B 1-22
C16a	30 mfd., 150 Volts	Elect. 67A 14-1
C16b	30 mfd., 150 Volts	
C16c	20 mfd., 150 Volts	
C16d	20 mfd., 25 Volts	
C17	.02 mfd., 400 Volts, Paper	64B 1-24

(Used only in sets with model numbers having a "UL" suffix)

**COILS, TRANSFORMERS, ETC.**

L1	Antenna and Trimmer, Loop	69B 13
L2	Coil, Oscillator	69A 52
T1	Transformer, 1st IF	72B 50
T2	Transformer, 2nd IF	72B 51
T3	Transformer, Output	79A 11-2
M1	Speaker (5") less output Trans.	78B 38-1
M2	Socket, Phono Motor	89A 6-3
M8	Socket, Phono input	88A 8-6
SW1	Switch, On-Off	Part of R9
SW2	Switch, Radio-Phono	77A 16-4

**PHONOGRAPH PARTS**

Note—See Record Changer Manual (changer model number specified on label on underside of changer) for complete parts list.

M3	Plug, AC Phono Motor	88A 8-1
M4	Motor, 60 Cycles, 115 Volts AC	407B 3-2
M5	Cartridge and Needle, Pickup	A1372-13
M6	Cable, Pickup (3 conductor)	89A 18-4
M7	Plug, Pickup Cable	88A 8-5

Symbol	Description	Part No.
SW3	Switch, Motor On-Off	408A 1
(See caution in changer manual)		
	Centerpost (includes speed-nut)	G400B 137-1
	Idler Wheel (407B 3-2 Motor)	G400A 23
	Idler Wheel (407B 1-2 Motor)	G400A 57

**CABINET PARTS**

Cabinet, Plastic		
Bottom Less Lid (Mahog.)	34D	11-12
Lid only (Mahogany)	34D	11-13
Dial Scale, Glass	21B	35-2
Escutcheon Overlay	23C	23-3
Grille Cloth and Baffle	A1859	
Knobs, Radio "Volume" and "Tuning"	33A	21-5
"Radio-Phono"	33A	21-9
Hinge	37A	8-1
Stay Arm and Plate	37A	9-1
Rubber Strip, Dial Scale Mtg. (8 1/2")	12A	9-3

**MISCELLANEOUS**

Background, Dial	22B	9-1
Bracket, Dial Light	15A	156
Carton and Fillers	44B	112
Dial Cord	50A	1-3
Pilot Light, Mazda No. 47	81A	1-8
Pilot Light Socket and Leads	82A	2-4
Spring, Dial Drum Tension	25A	21
Tuning Shaft	19B	1-3
Washer, "C" (Tuning Shaft)	28A	26-3
Washer, Felt	4A	4-6
Washer, Spring (Tuning Shaft)	5A	4-11
Washer, Spring (Tuning Shaft)	4A	6-3-0

© John F. Rider

MODEL 5T12,  
CHASSIS 5T1

ADMIRAL CORP.

### ALIGNMENT PROCEDURE

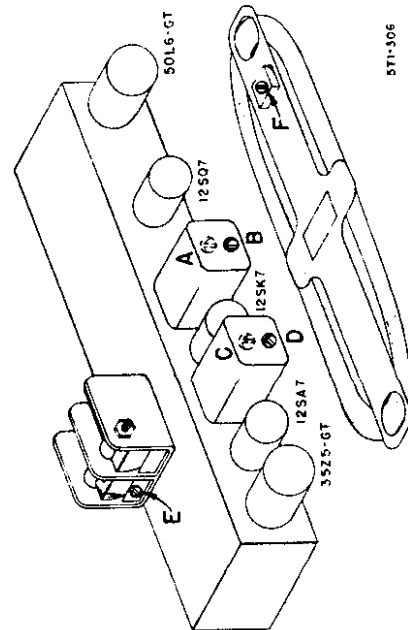
- Check pointer position. With tuning gang closed, the tip of the pointer clip should be over the 1/16" circular punch at the extreme left end of the dial background (see stringing diagram).
- Connect output meter across voice coil.
- Turn receiver volume control full on.
- Loop antenna must be connected and placed in the same relative position to the chassis as when in cabinet.
- Use an isolation transformer if available, otherwise connect a .1 mfd. condenser in series with low side of signal generator and attach to B minus of chassis.
- Use an insulated alignment screwdriver for IF adjustments.
- Use lowest output setting of signal generator capable of producing adequate output meter indication and proceed in the following sequence.
- Repeat adjustments to insure good results.

Step	Dummy Antenna in Series with Signal Generator	Connection of Signal Generator (High Side)	Signal Generator Frequency	Receiver Gang Setting	Trimmer Description	Trimmer Designation	Type of Adjustment
1	250 mmfd. condenser	Tuning condenser, antenna stator	455 KC	Gang fully open	2nd IF 1st IF	A, B C, D (see note below)	Maximum output
2	250 mmfd. condenser	Tuning condenser, antenna stator	1620 KC	Gang fully open	Oscillator	E	Maximum output
3	Loop of several turns of wire, or place generator lead close to receiver loop for adequate signal.	No physical connection (signal by radiation)	1400 KC	Tune in generator signal	Antenna	F (see note below)	Maximum output

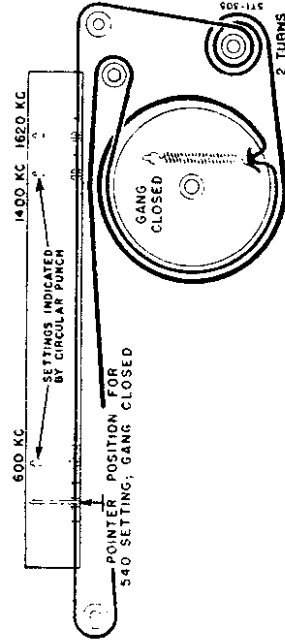
NOTE: Antenna Trimmer "F" must be aligned after chassis and loop are mounted in cabinet. Loop trimmer adjustment is located at the rear of the cabinet.

Trimmers "A" and "C" are adjusted from underside of chassis.

### TUBE AND TRIMMER LOCATION



### DIAL STRINGING AND POINTER SETTING



With the gang fully closed, the tip of the pointer clip should be in line with the 1/16" circular punch at the extreme left end of the dial background.

5T1-506