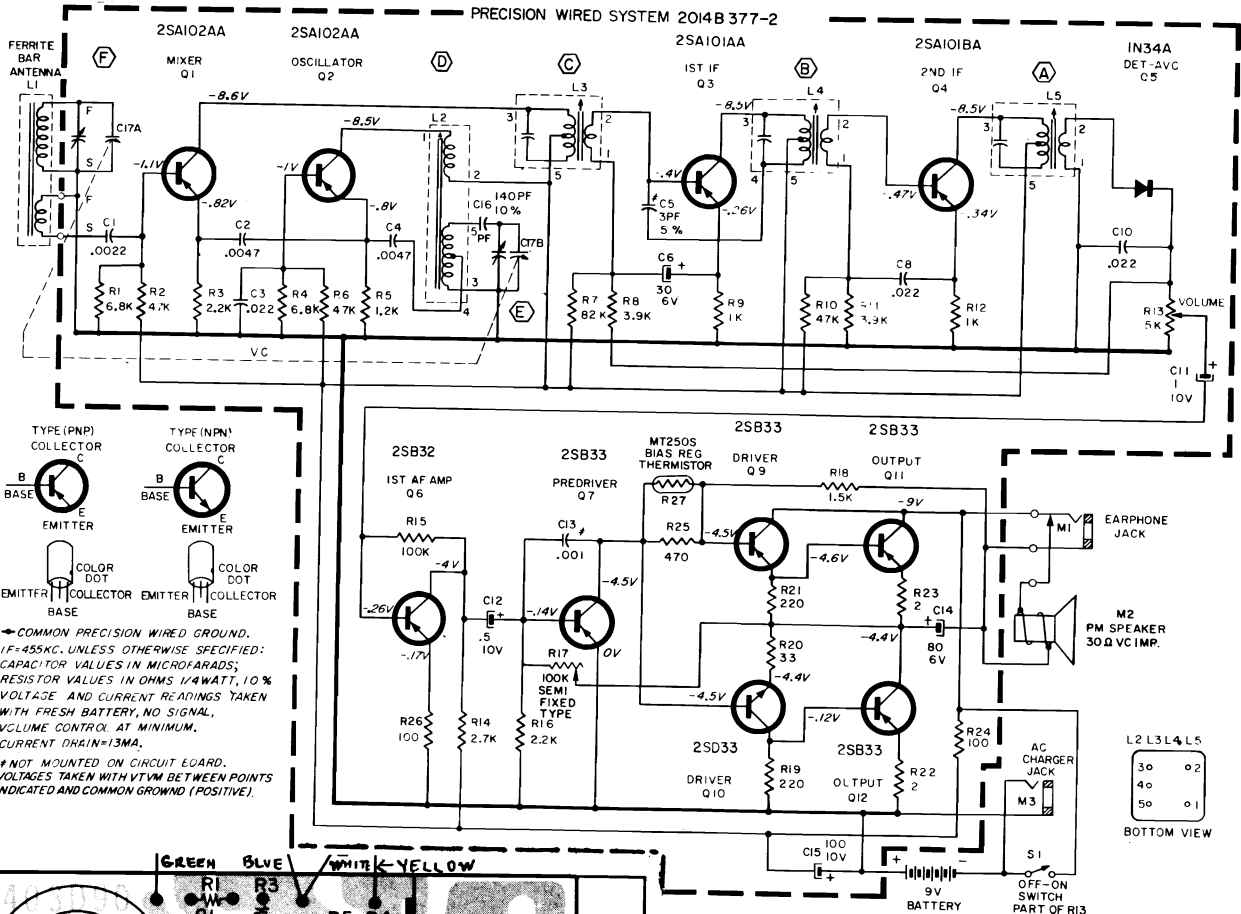


Admiral®

Chassis 10J1, Model YD257



AC CHARGER OPERATION

Plug the AC Charger into the jack on the radio and into a wall outlet and the radio operates on ordinary AC house current—little battery drain. After using radio outdoors (from battery), plug in the AC charger with radio turned 'OFF' and the AC Charger will restore power to the radio battery. The AC Charger will extend the useful life of the transistor radio battery many times its normal expectancy.

