

# aiwa



## AM-HX30

---

MINIDISC PLAYER

---

• BASIC MD MECHANISM: 8ZG-6 A

• TYPE: D

**SIMPLE MANUAL**

• Replace this Service Manual with "Revision Publishing" when it is issued.

S/M Code No. 09-98B-311-40A

MANUAL  
SERVICE

# ELECTRICAL MAIN PARTS LIST - 1/2

NOTE: The characters in the suffix column indicate the part usage.

[S]D .....OO.....A.....  
 [ST]D .....OO.....B.....  
 [L]D .....OO.....C.....

REF.NO	PARTS NO.	KANRI NO.	DESCRIPTION	SUFFIX
*	8Z-HM4-602-010	1E	PWB,FLEX TACT	ABC.....
*	8Z-HM4-603-010	1A	PWB,FLEX MECHA	ABC.....
*	8Z-HM4-604-010	1A	PWB,FLEX JACK	ABC.....
J	701	87-A60-682-010	1B JACK,3.5 ST 7P	ABC.....
C	109	87-010-787-080	0E CAP, U 0.022-25	ABC.....
C	108	87-012-286-080	0E CAP, U 0.01-25	ABC.....
C	102	87-016-296-080	1A C-CAP,TN 22-4SV(A)	ABC.....
C	100	87-016-296-080	1A C-CAP,TN 22-4SV(A)	ABC.....
C	103	87-016-296-080	1A C-CAP,TN 22-4SV(A)	ABC.....
C	106	87-016-296-080	1A C-CAP,TN 22-4SV(A)	ABC.....
C	104	87-A10-057-080	1B C-CAP,TN 100-4 F95 E	ABC.....
C	107	87-A10-504-080	0E C-CAP,U 0.047-16 K B	ABC.....
C	119	87-010-787-080	0E CAP, U 0.022-25	ABC.....
C	116	87-012-195-080	0E C-CAP,U 100P-50CH	ABC.....
C	111	87-012-282-080	0E CAP, U 4700P-50	ABC.....
C	113	87-012-282-080	0E CAP, U 4700P-50	ABC.....
C	118	87-012-286-080	0E CAP, U 0.01-25	ABC.....
C	117	87-012-286-080	0E CAP, U 0.01-25	ABC.....
C	115	87-016-448-080	1A C-CAP,TN 2.2-10 F95P	ABC.....
C	110	87-A10-353-080	0E C-CAP,U0.22-10KB	ABC.....
C	112	87-A11-049-080	0E C-CAP,U 1-6.3 K B	ABC.....
C	114	87-A11-049-080	0E C-CAP,U 1-6.3 K B	ABC.....
C	128	87-012-274-080	0E CHIP CAP,U 1000P-50B	ABC.....
C	127	87-012-274-080	0E CHIP CAP,U 1000P-50B	ABC.....
C	126	87-012-274-080	0E CHIP CAP,U 1000P-50B	ABC.....
C	129	87-012-274-080	0E CHIP CAP,U 1000P-50B	ABC.....
C	124	87-012-274-080	0E CHIP CAP,U 1000P-50B	ABC.....
C	125	87-012-274-080	0E CHIP CAP,U 1000P-50B	ABC.....
C	120	87-012-284-080	0E CAP, U 6800P-50	ABC.....
C	122	87-012-286-080	0E CAP, U 0.01-25	ABC.....
C	123	87-012-286-080	0E CAP, U 0.01-25	ABC.....
C	121	87-A10-504-080	0E C-CAP,U 0.047-16 K B	ABC.....
IC	100	87-A20-707-010	2B C-IC,CXA2523AR	ABC.....
L	100	87-A50-108-080	1A C-COIL,330H K NLC	ABC.....
L	102	87-A50-108-080	1A C-COIL,330H K NLC	ABC.....
Q	104	87-026-644-080	0E C-TR,DTA144EE	ABC.....
Q	101	87-A30-148-080	0E C-TR,2SC4738GR	ABC.....
Q	100	89-115-884-080	0E CHIP -TRANSISTER 2SA1588Y	ABC.....
C	206	87-012-270-080	0E CAP, U 470P-50	ABC.....
C	202	87-012-280-080	0E CAP, U 3300P-50	ABC.....
C	208	87-012-286-080	0E CAP, U 0.01-25	ABC.....
C	203	87-016-453-080	0E C-CAP,U 0.1-16 BK	ABC.....
C	205	87-016-453-080	0E C-CAP,U 0.1-16 BK	ABC.....
C	207	87-A10-902-080	0E C-CAP,U 0.47-10 K B	ABC.....
C	204	87-A10-902-080	0E C-CAP,U 0.47-10 K B	ABC.....
C	216	87-010-785-080	0E C-CAP,U0.015-25BK	ABC.....
C	214	87-A10-353-080	0E C-CAP,U0.22-10KB	ABC.....
C	217	87-A10-954-080	1A C-CAP,TN 22-4 MCR	ABC.....
IC	200	87-A20-931-010	2D C-IC,CXD2655R	ABC.....
IC	204	87-A21-027-080	1B C-IC,TC7W66FU	ABC.....
IC	203	87-A21-140-010	2P C-IC,MSM51V17400D	ABC.....
L	200	87-A50-358-080	0E C-COIL, 10UH K NLFC252018	ABC.....
Q	205	87-026-644-080	0E C-TR,DTA144EE	ABC.....
Q	201	87-A30-147-080	0E C-TR,2SA1832GR	ABC.....
Q	202	87-A30-147-080	0E C-TR,2SA1832GR	ABC.....
Q	200	87-A30-147-080	0E C-TR,2SA1832GR	ABC.....
X	201	87-A70-158-080	1B C-VIB,CER 22.57MHZ SSR-B	ABC.....
C	415	87-012-278-080	0E C-CAP,U 2200P-50 B	ABC.....
C	414	87-012-278-080	0E C-CAP,U 2200P-50 B	ABC.....
C	416	87-012-278-080	0E C-CAP,U 2200P-50 B	ABC.....
C	418	87-016-453-080	0E C-CAP,U 0.1-16 BK	ABC.....
C	419	87-016-453-080	0E C-CAP,U 0.1-16 BK	ABC.....
C	417	87-016-453-080	0E C-CAP,U 0.1-16 BK	ABC.....
C	413	87-A11-049-080	0E C-CAP,U 1-6.3 K B	ABC.....
C	411	87-A11-070-080	0E C-CAP,U 0.033-16 K B	ABC.....
C	412	87-A11-070-080	0E C-CAP,U 0.033-16 K B	ABC.....
C	422	87-016-453-080	0E C-CAP,U 0.1-16 BK	ABC.....
C	428	87-016-453-080	0E C-CAP,U 0.1-16 BK	ABC.....
C	424	87-016-453-080	0E C-CAP,U 0.1-16 BK	ABC.....
C	423	87-016-453-080	0E C-CAP,U 0.1-16 BK	ABC.....
C	429	87-A10-057-080	1B C-CAP,TN 100-4 F95 E	ABC.....
C	421	87-A11-049-080	0E C-CAP,U 1-6.3 K B	ABC.....
C	420	87-A11-049-080	0E C-CAP,U 1-6.3 K B	ABC.....
C	432	87-016-296-080	1A C-CAP,TN 22-4SV(A)	ABC.....
C	431	87-A10-057-080	1B C-CAP,TN 100-4 F95 E	ABC.....
C	430	87-A10-057-080	1B C-CAP,TN 100-4 F95 E	ABC.....
CN	401	87-A60-795-080	1A C-CONN,8P H SFV1ST	ABC.....
IC	411	87-A21-024-010	2B C-IC,BD6601KV	ABC.....
L	411	87-A50-358-080	0E C-COIL, 10UH K NLFC252018	ABC.....
L	416	87-A50-358-080	0E C-COIL, 10UH K NLFC252018	ABC.....
L	413	87-A50-358-080	0E C-COIL, 10UH K NLFC252018	ABC.....
L	412	87-A50-358-080	0E C-COIL, 10UH K NLFC252018	ABC.....
L	417	87-A50-358-080	0E C-COIL, 10UH K NLFC252018	ABC.....
L	414	87-A50-358-080	0E C-COIL, 10UH K NLFC252018	ABC.....

# ELECTRICAL MAIN PARTS LIST - 2/2

L	415	87-A50-361-080	0E	C-COIL, 100UH K NLFC252018	ABC.....
Q	402	87-A30-235-080	0E	C-TR,UMD2N	ABC.....
Q	401	87-A30-261-080	1B	C-FET,FDC633N	ABC.....
C	704	87-012-195-080	0E	C-CAP,U 100P-50CH	ABC.....
C	703	87-012-195-080	0E	C-CAP,U 100P-50CH	ABC.....
C	701	87-A11-049-080	0E	C-CAP,U 1-6.3 K B	ABC.....
C	702	87-A11-049-080	0E	C-CAP,U 1-6.3 K B	ABC.....
C	772	87-016-296-080	1A	C-CAP,TN 22-4SV(A)	ABC.....
C	774	87-016-449-080	1A	C-CAP,TN 10-4 F95 P	ABC.....
C	778	87-A10-057-080	1B	C-CAP,TN 100-4 F95 E	ABC.....
C	776	87-A10-057-080	1B	C-CAP,TN 100-4 F95 E	ABC.....
C	779	87-A10-057-080	1B	C-CAP,TN 100-4 F95 E	ABC.....
C	777	87-A10-057-080	1B	C-CAP,TN 100-4 F95 E	ABC.....
C	770	87-A11-049-080	0E	C-CAP,U 1-6.3 K B	ABC.....
C	775	87-A11-049-080	0E	C-CAP,U 1-6.3 K B	ABC.....
C	773	87-A11-049-080	0E	C-CAP,U 1-6.3 K B	ABC.....
C	771	87-A11-049-080	0E	C-CAP,U 1-6.3 K B	ABC.....
C	782	87-016-296-080	1A	C-CAP,TN 22-4SV(A)	ABC.....
C	785	87-016-296-080	1A	C-CAP,TN 22-4SV(A)	ABC.....
C	787	87-016-453-080	0E	C-CAP,U 0.1-16 BK	ABC.....
C	790	87-A10-504-080	0E	C-CAP,U 0.047-16 K B	ABC.....
IC	770	87-A21-029-040	1D	C-IC,BA3577FV	ABC.....
L	701	87-A50-358-080	0E	C-COIL, 10UH K NLFC252018	ABC.....
L	770	87-A50-362-080	1A	C-COIL,ACM2520-601-2P	ABC.....
L	771	87-A50-362-080	1A	C-COIL,ACM2520-601-2P	ABC.....
C	303	87-012-274-080	0E	CHIP CAP,U 1000P-50B	ABC.....
C	305	87-012-286-080	0E	CAP, U 0.01-25	ABC.....
C	307	87-016-453-080	0E	C-CAP,U 0.1-16 BK	ABC.....
C	301	87-016-453-080	0E	C-CAP,U 0.1-16 BK	ABC.....
C	306	87-016-453-080	0E	C-CAP,U 0.1-16 BK	ABC.....
C	302	87-016-453-080	0E	C-CAP,U 0.1-16 BK	ABC.....
C	309	87-016-453-080	0E	C-CAP,U 0.1-16 BK	ABC.....
C	310	87-012-286-080	0E	CAP, U 0.01-25	ABC.....
C	311	87-012-286-080	0E	CAP, U 0.01-25	ABC.....
C	312	87-016-453-080	0E	C-CAP,U 0.1-16 BK	ABC.....
CN	301	87-A60-847-080	0E	C-CONN,4P H 6206	ABC.....
D	302	87-017-850-080	0E	C-DIODE,DAP222	ABC.....
D	304	87-017-850-080	0E	C-DIODE,DAP222	ABC.....
D	301	87-070-398-080	1A	C-LED,CL220HR	ABC.....
IC	302	87-A21-030-040	1B	C-IC,S-93C46AMFN	ABC.....
IC	300	8Z-HM4-601-010	2M	C-IC,CXP81952	ABC.....
Q	304	87-026-645-080	0E	C-TR,DTC144EE	ABC.....
Q	303	87-A30-033-080	0E	C-FET,2SK2035	ABC.....
R	304	87-022-239-080	0E	C-RES U 10K-1/16WF	ABC.....
S	300	87-A90-330-080	0E	C-SW,SL 1-1-2 SSSS81	ABC.....
S	304	87-A90-952-080	0E	C-SW,PUSH MPU10853MLB3	ABC.....
X	301	87-A70-159-080	1A	C-VIB,CER 12.0MHZ CSTCV	ABC.....
C	600	87-012-274-080	0E	CHIP CAP,U 1000P-50B	ABC.....
C	605	87-016-296-080	1A	C-CAP,TN 22-4SV(A)	ABC.....
C	606	87-016-296-080	1A	C-CAP,TN 22-4SV(A)	ABC.....
C	607	87-016-453-080	0E	C-CAP,U 0.1-16 BK	ABC.....
C	601	87-016-453-080	0E	C-CAP,U 0.1-16 BK	ABC.....
C	609	87-016-453-080	0E	C-CAP,U 0.1-16 BK	ABC.....
C	602	87-A10-591-080	1B	C-CAP,TN 47-6.3 M F95-BCASE	ABC.....
C	608	87-A10-954-080	1A	C-CAP,TN 22-4 MCR	ABC.....
C	603	87-A10-954-080	1A	C-CAP,TN 22-4 MCR	ABC.....
C	604	87-A10-955-080	1A	C-CAP,TN 47-6.3 MCR	ABC.....
C	610	87-016-453-080	0E	C-CAP,U 0.1-16 BK	ABC.....
D	605	87-017-850-080	0E	C-DIODE,DAP222	ABC.....
D	606	87-A40-540-080	0E	C-DIODE,M1FP3	ABC.....
D	601	87-A40-540-080	0E	C-DIODE,M1FP3	ABC.....
D	602	87-A40-540-080	0E	C-DIODE,M1FP3	ABC.....
D	604	87-A40-541-080	0E	C-DIODE,1SS362	ABC.....
D	610	87-017-850-080	0E	C-DIODE,DAP222	ABC.....
F	600	87-A90-745-080	1B	C-FUSE,750MA 13.2V MINISMDC075	ABC.....
F	601	87-A90-745-080	1B	C-FUSE,750MA 13.2V MINISMDC075	ABC.....
IC	604	87-A20-674-040	1A	C-IC,S-80825ANNP-EDN	ABC.....
IC	603	87-A20-674-040	1A	C-IC,S-80825ANNP-EDN	ABC.....
IC	602	87-A21-026-080	1B	C-IC,S-8327B25MC	ABC.....
IC	605	87-A21-028-080	1B	C-IC,TK11224B	ABC.....
IC	601	87-A21-132-080	1B	C-IC,S-8327B28MC	ABC.....
IC	610	87-A20-861-040	1A	C-IC,S-80808ANNP	ABC.....
L	603	87-A50-324-080	1A	C-COIL,47UH C4-K3L	ABC.....
L	602	87-A50-325-080	1A	C-COIL,180UH C4-K3L	ABC.....
Q	605	87-026-645-080	0E	C-TR,DTC144EE	ABC.....
Q	606	87-A30-033-080	0E	C-FET,2SK2035	ABC.....
Q	603	87-A30-033-080	0E	C-FET,2SK2035	ABC.....
Q	608	87-A30-183-040	1A	C-TR,2SD1628G	ABC.....
Q	607	87-A30-235-080	0E	C-TR,UMD2N	ABC.....
Q	601	87-A30-261-080	1B	C-FET,FDC633N	ABC.....
Q	602	87-A30-262-080	1B	C-FET,FDC634P	ABC.....
Q	604	87-A30-262-080	1B	C-FET,FDC634P	ABC.....
R	608	87-022-294-080	0E	C-RES,U 470K 1-16W F	ABC.....

# MECHANICAL PARTS LIST - 1/1

NOTE: The characters in the suffix column indicate the part usage.

[S]D .....OO.....A.....  
 [ST]D .....OO.....B.....  
 [L]D .....OO.....C.....

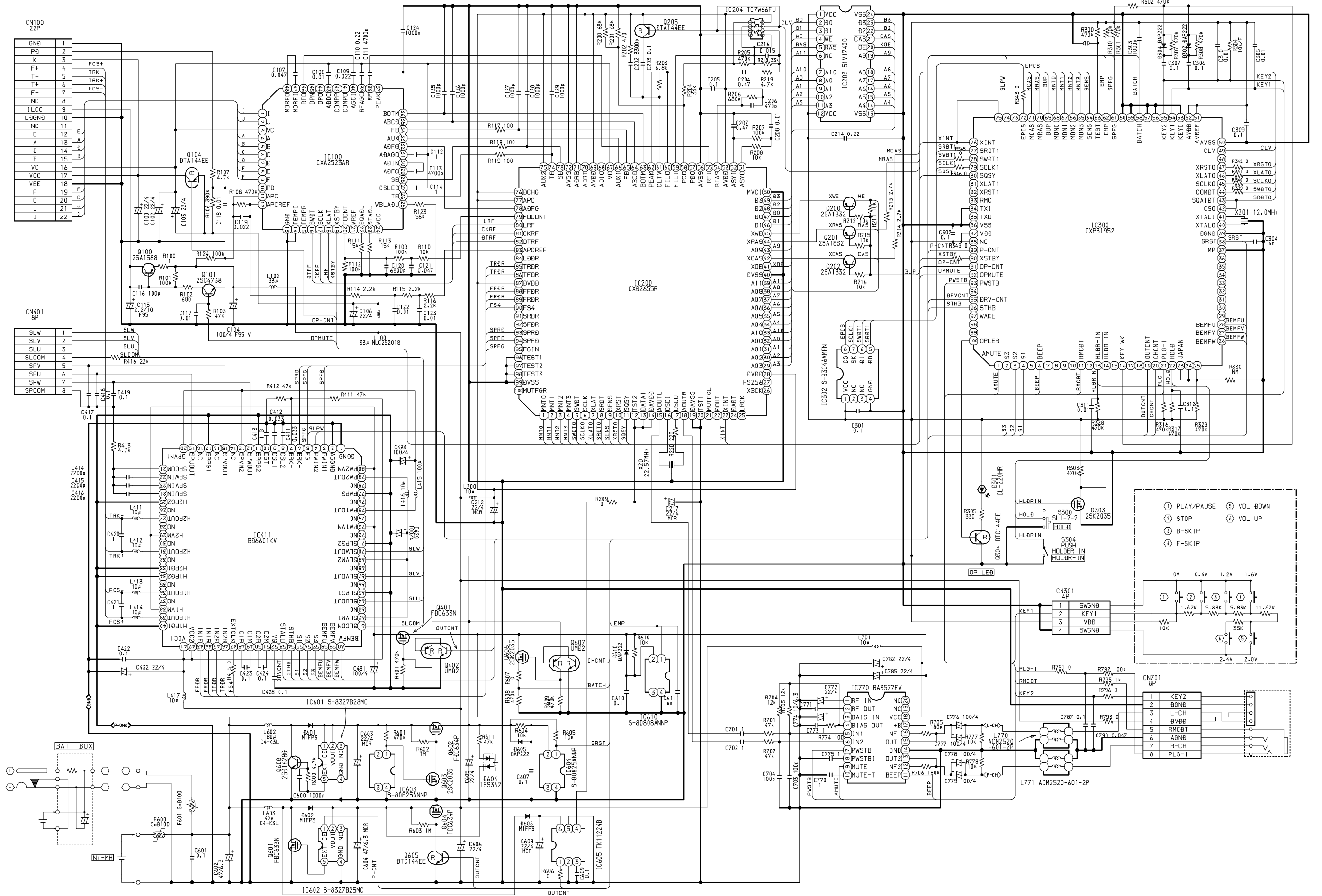
REF.NO	PARTS NO.	KANRI NO.	DESCRIPTION	SUFFIX
	8Z-HM4-001-010	2A	PANEL ASSY, TOP	A.....
	8Z-HM4-004-010	1H	FRAME, CENTER	ABC.....
	8Z-HM4-005-010	1B	LID, BAT	ABC.....
	8Z-HM4-014-010	2M	PANEL ASSY, TOP ST	.B.....
	8Z-HM4-017-010	2M	PANEL ASSY, TOP L	.C.....
	8Z-HM4-008-010	0E	KNOB, SL HOLD	ABC.....
	8Z-HM4-009-010	1B	KEY, MAIN	ABC.....
	8Z-HM4-010-010	1B	KEY, VOL	ABC.....
	8Z-HM4-011-010	1B	KNOB, SL EJECT	ABC.....
	8Z-HM4-006-010	1C	PLATE, TOP	ABC.....
	8Z-HM4-007-010	2A	PANEL, BOT	A.....
	8Z-HM4-016-010	2A	PANEL, BOT ST	.B.....
	8Z-HM4-019-010	2A	PANEL, BOT L	.C.....
	8Z-HM4-012-010	0E	LENS, LED	ABC.....
	8Z-HM4-201-010	1F	FRAME ASSY, FRONT	ABC.....
	8Z-HM4-206-010	0E	SPR-T, OPEN	ABC.....
	8Z-HM4-207-010	0E	SPR-P, TOP F	ABC.....
	8Z-HM4-208-010	0E	SPR-P, TOP R	ABC.....
	8Z-HM4-213-010	0E	COVER, BAT	ABC.....
	8Z-HM4-214-010	0E	DMPR, G	ABC.....
	8Z-HM4-215-010	0E	BAT-CONTACT, -	ABC.....
	8Z-HM4-218-010	0E	COVER, BAT BOX	ABC.....
	8Z-HM4-219-010	0E	BAT-CONTACT, BOX	ABC.....
	8Z-HM4-220-010	0E	COVER, BAT +	ABC.....
	8Z-HM4-223-010	1C	FRAME ASSY, REAR	ABC.....
	8Z-HM4-225-010	0E	HLDR, BAT	ABC.....
	8Z-HM4-226-010	0E	HLDR, PWB	ABC.....
	8Z-HM4-227-010	0E	PLATE, REAR	ABC.....
	8Z-HM4-228-010	1B	HINGE ASSY, BAT	ABC.....
	8Z-HM4-230-010	0E	SPR-E, EJECT	ABC.....
	87-067-556-010	0E	SCREW 1.4-3SPL(B) N	ABC.....
	87-067-746-010	0E	SCREW, M 1.4-2(H0.5)	ABC.....
	87-261-504-310	0E	SCREW V+1.4-2.2	ABC.....
	87-353-507-310	0E	VT2+1.4-3 CHROME	ABC.....
	87-HM1-242-010	0E	S-SCREW, 1.4-2.0CR	ABC.....
	87-HM1-243-010	0E	S-SCREW, 1.4-1.4CRNL	ABC.....
	87-HM1-254-010	0E	S-SCREW, 1.4-1.4CR	ABC.....

# ACCESSORIES / PACKAGE LIST - 1/1

NOTE: The characters in the suffix column indicate the part usage.

REF.NO	PARTS NO.	NO.	DESCRIPTION	SUFFIX
[S]D		OO		A
[ST]D		OO		B
[L]D		OO		C
		KANRI		
	8Z-HM4-901-010	1B	IB,D	ABC
	87-B30-066-110	2B	CHARGER,RB-M01	ABC
	87-B30-175-010	2M	HEADPHONE,HP-M031	ABC
	87-B30-201-010	2B	BAT,MHB-901	ABC
	87-B30-221-010	1B	CASE,BATTERY	ABC
	87-HM1-953-010	1H	BAG,CARRING	ABC
	88-HK4-090-010	1H	BOX,BAT ASSY SIL	ABC
	8Z-HM4-605-010	2D	RC UNIT,RC-HX30	ABC

SCHEMATIC DIAGRAM



サービス技術ニュース	
番号	連絡内容
G- -	
G- -	
G- -	

**アイワ株式会社**  
**AIWA CO.,LTD.**

9420025

Tokyo Japan