

Date 13.06.03	Ref. No. <b>03AH003</b>	Model <b>AM-LM918, LCX-MT22, XR-FD1, XR-FD5, XR-V10MD</b>	HA
Subject <b>"Disc Error" Indication</b>			IRIS C625

## SYMPTOM

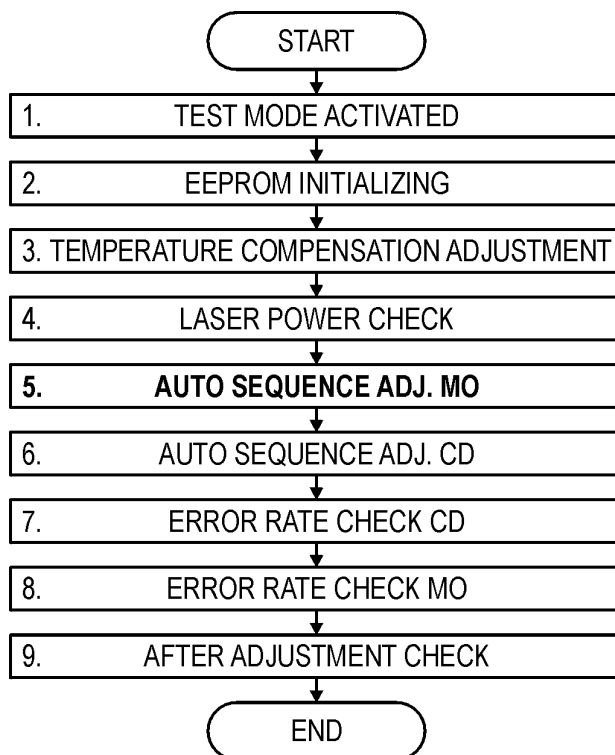
"Disc Error" may be displayed with specific discs such as Sony MD (Neige series), i.e. 5MD74NEA, 5MD80NEA, 10MD74NEA, 10MD80NEA.

## CAUSE

Unstable reading when using low-reflectivity MO discs.

## SOLUTION

Using the test disc **"MDW-74/AU1" (8-892-341-41)**, only perform the "Auto Sequence Adj. MO" (step 5 of the "Adjustment Procedure Flowchart" below).



## NOTE

If the message "Failed" appears during the adjustment, perform the complete adjustment procedure as described in the Service Manual.