



SERVICE MANUAL

STEREO CASSETTE PLAYER

BASIC TAPE MECHANISM : 4ZM-2 P19NC2

- This Service Manual is the "Revision Publishing" and replaces "Simple Manual"
S/M Code No. 09-022-452-4T1.

aiwa

S/M Code No. 09-023-452-4R1

REVISION
DATA

SPECIFICATIONS

Maximum output:	15 mW + 15 mW (EIAJ 32 ohms)
Power source:	DC 3 V using two R6 (size AA) batteries ; AC house current using the optional AC adaptor AIWA AC-D302
Maximum outside dimensions:	89.5 (W) x 116.5 (H) x 30.3 (D) mm (excluding projecting parts and control)
Weight	Approx.109 g (excluding batteries)

- Design and specifications are subject to change without notice.

ELECTRICAL PARTS LIST

! = Δ SAFTY PARTS
 C = Components marked

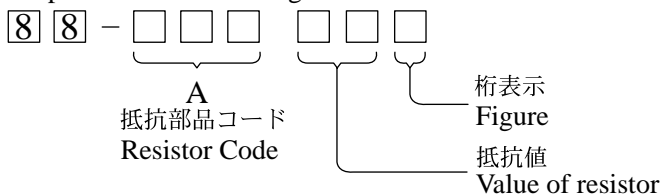
All components used on this model at the production line are shown in this service manual.
 However, please note that not all components will be available as spare parts for after-sales service.
 Components marked S and O are designated as spare parts for service and will be stocked at the spare parts centers.
 Components marked X and R are not designated as spare parts for after sales service, and will not be stocked at the spare parts centers.

UNIT-NAME	! C	REF-NO	PARTS-NO	PARTS-NAME	SUFFIX&MODEL			
					HS-PS183 YH1LC	HS-PS183 YH1NC	HS-PS183 YH1SC	
MAIN		0 C	0001	87-012-277-080	CHIP CAP 0.0018 uF/50V +-10%	a	b	c
MAIN		0 C	0002	87-012-277-080	CHIP CAP 0.0018 uF/50V +-10%	a	b	c
MAIN		0 C	0003	87-012-284-080	CHIP CAP 0.0068 uF/50V +-10%	a	b	c
MAIN		0 C	0004	87-012-284-080	CHIP CAP 0.0068 uF/50V +-10%	a	b	c
MAIN		0 C	0005	87-015-674-040	ELECT CAP 22 MFD/6.3V +-20% (a	b	c
MAIN		0 C	0006	87-015-674-040	ELECT CAP 22 MFD/6.3V +-20% (a	b	c
MAIN		0 C	0007	87-012-277-080	CHIP CAP 0.0018 uF/50V +-10%	a	b	c
MAIN		0 C	0008	87-012-277-080	CHIP CAP 0.0018 uF/50V +-10%	a	b	c
MAIN		0 C	0009	87-012-274-080	CHIP CAP 0.001 uF/50V +-10% (a	b	c
MAIN		0 C	0010	87-012-274-080	CHIP CAP 0.001 uF/50V +-10% (a	b	c
MAIN		0 C	0011	87-A10-489-040	ELECT CAP 220 MFD/4V +-20% (S	a	b	c
MAIN		0 C	0012	87-A10-489-040	ELECT CAP 220 MFD/4V +-20% (S	a	b	c
MAIN		0 C	0014	87-015-681-040	ELECT CAP 10 MFD/16V +-20% (S	a	b	c
MAIN		0 C	0015	87-010-831-080	CHIP CAP 0.1 uF/16V +80-20% (a	b	c
MAIN		0 C	0017	87-A11-056-080	CHIP CAP 1 uF/10V +80-20% (06	a	b	c
MAIN		0 C	0018	87-A11-056-080	CHIP CAP 1 uF/10V +80-20% (06	a	b	c
MAIN		0 C	0027	87-010-831-080	CHIP CAP 0.1 uF/16V +80-20% (a	b	c
MAIN		0 C	0051	87-015-695-040	ELECT CAP 1 MFD/50V +-20%(SMA	a	b	c
MAIN		S D	0001	87-A40-630-040	CHIP DIODE RB411D	a	b	c
MAIN		S IC	0001	87-A21-684-04C	ICAMP-HEAD-ST-00001W TA2145AF	a	b	c
					HS-PS183 YH1LC		HS-PS183 YH1NC	HS-PS183 YH1SC
MAIN		0 J	0001	85-HRL-623-019	PHONE JACK 3.5mm STEREO TC38-	a	b	c
MAIN		0 J	0002	87-A61-124-110	DC POWER JACK #TC18-251-04 (T	a	b	c
MAIN		X R	0001	88-108-334-080	CHIP RESISTOR 330 Kohm +-5% 1	a	b	c
MAIN		X R	0002	88-108-334-080	CHIP RESISTOR 330 Kohm +-5% 1	a	b	c
MAIN		0 R	0003	88-108-223-080	CHIP RESISTOR 22 Kohm +-5% 1/	a	b	c
MAIN		0 R	0004	88-108-223-080	CHIP RESISTOR 22 Kohm +-5% 1/	a	b	c
MAIN		X R	0005	88-108-391-080	CHIP RESISTOR 390 ohm +-5% 1/	a	b	c
MAIN		X R	0006	88-108-391-080	CHIP RESISTOR 390 ohm +-5% 1/	a	b	c
MAIN		0 R	0007	88-108-153-080	CHIP RESISTOR 15 Kohm +-5% 1/	a	b	c
MAIN		0 R	0008	88-108-153-080	CHIP RESISTOR 15 Kohm +-5% 1/	a	b	c
MAIN		0 R	0013	88-108-562-080	CHIP RESISTOR 5.6 Kohm +-5% 1	a	b	c
MAIN		X R	0014	88-108-000-080	CHIP RESISTOR 0 ohm +-5% 1/16	a	b	c
MAIN		X R	0016	88-108-000-080	CHIP RESISTOR 0 ohm +-5% 1/16	a	b	c
MAIN		X R	0017	88-108-000-080	CHIP RESISTOR 0 ohm +-5% 1/16	a	b	c
MAIN		X R	0018	88-108-000-080	CHIP RESISTOR 0 ohm +-5% 1/16	a	b	c
MAIN		0 R	0020	88-108-102-080	CHIP RESISTOR 1 Kohm +-5% 1/1	a	b	c
MAIN		X R	0021	88-108-183-080	CHIP RESISTOR 18 Kohm +-5% 1/	a	b	c
MAIN		X R	0022	88-108-183-080	CHIP RESISTOR 18 Kohm +-5% 1/	a	b	c
MAIN		0 R	0051	87-A00-530-080	CHIP RESISTOR 180 ohm +-1% 1/	a	b	c
MAIN		X R	0053	88-108-182-080	CHIP RESISTOR 1.8 Kohm +-5% 1	a	b	c
					HS-PS183 YH1LC		HS-PS183 YH1NC	HS-PS183 YH1SC
MAIN		X R	0054	88-108-221-080	CHIP RESISTOR 220 ohm +-5% 1/	a	b	c
MAIN		0 SFR	0051	87-024-197-010	SEMI-FIXED 1 Kohm #VZ066L4/L3	a	b	c
MAIN		0 SW	0001	87-A90-133-110	(F022-001120-001) LEAF SWITCH	a	b	c
MAIN		0 VR	0001	87-A91-581-110	VR-C&M1GH020KB&SH&D 20KB RK1	a	b	c
MAIN		X W	0001	87-610-042-210	JP WIRE AWG26#1007 3x3mm 40mm	a	b	c
MAIN		X W	0002	87-612-042-210	JP WIRE AWG26#1007 3x3mm 40mm	a	b	c
MAIN		X W	0003	8B-HKA-604-010	SHIELD WIRE TWIN CORE,2mm,100	a	b	c

○チップ抵抗部品コード／CHIP RESISTOR PART CODE

チップ抵抗部品コードの成り立ち

Chip Resistor Part Coding



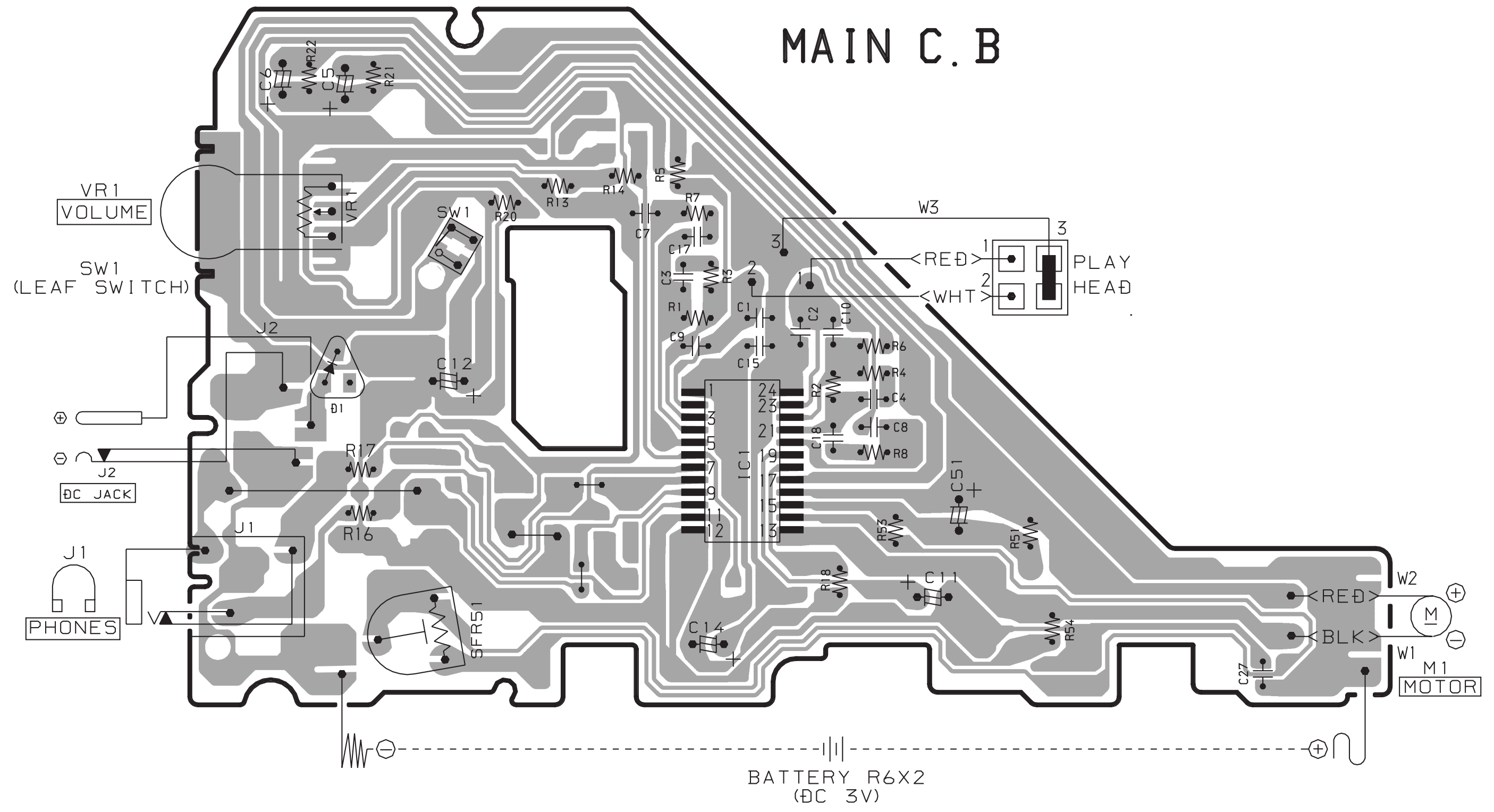
チップ抵抗
Chip resistor

容量 Wattage	種類 Type	許容誤差 Tolerance	記号 Symbol	寸法/Dimensions (mm)			抵抗コード : A Resistor Code : A	
				外形/Form	L	W		t
1/16W	1005	± 5%	CJ		1.0	0.5	0.35	104
1/16W	1608	± 5%	CJ		1.6	0.8	0.45	108
1/10W	2125	± 5%	CJ		2	1.25	0.45	118
1/8W	3216	± 5%	CJ		3.2	1.6	0.55	128

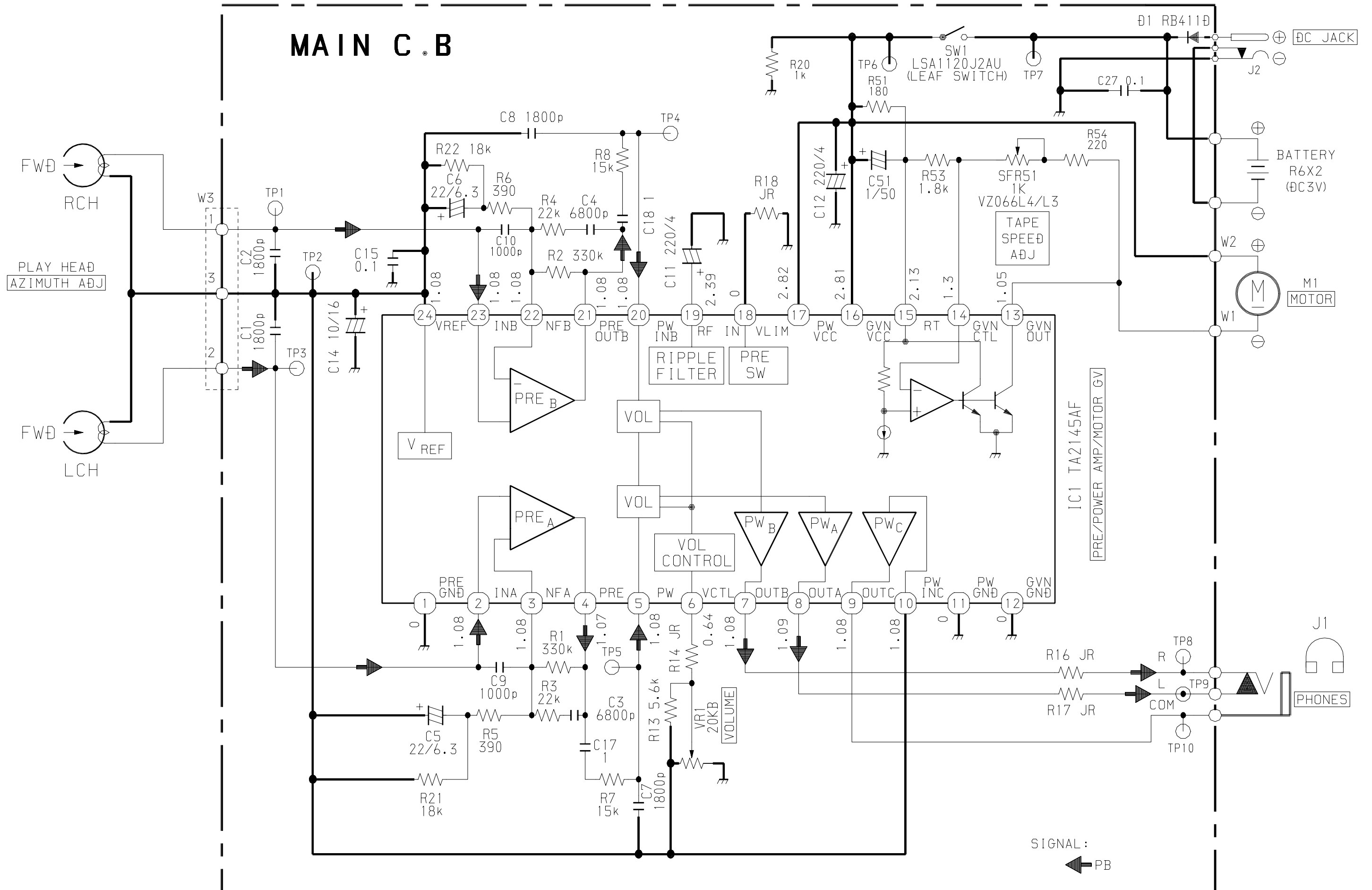
32	31	30	29	28	27	26	25	24	23	22	21	20	19	18	17	16	15	14	13	12	11	10	9	8	7	6	5	4	3	2	1
----	----	----	----	----	----	----	----	----	----	----	----	----	----	----	----	----	----	----	----	----	----	----	---	---	---	---	---	---	---	---	---

A
B
C
D
E
F
G
H
I
J
K
L
M
N
O
P
Q
R
S
T
U

MAIN C. B



SCHEMATIC DIAGRAM



ADJUSTMENT

1. Tape Speed Adjustment

Settings : • Test tape : TTA - 100 (TAPE CENTER)

- Test point : PHONES JACK (J1)
- Adjustment location : SFR 51
- Volume : NON-CLIP (MAX - 10dB DOWN)

Method : Play back the test tape and adjust SFR 51 so that the frequency is $3000 \text{ Hz} \pm 60 \text{ Hz}$. Then confirm WOW is less than 0.50%.

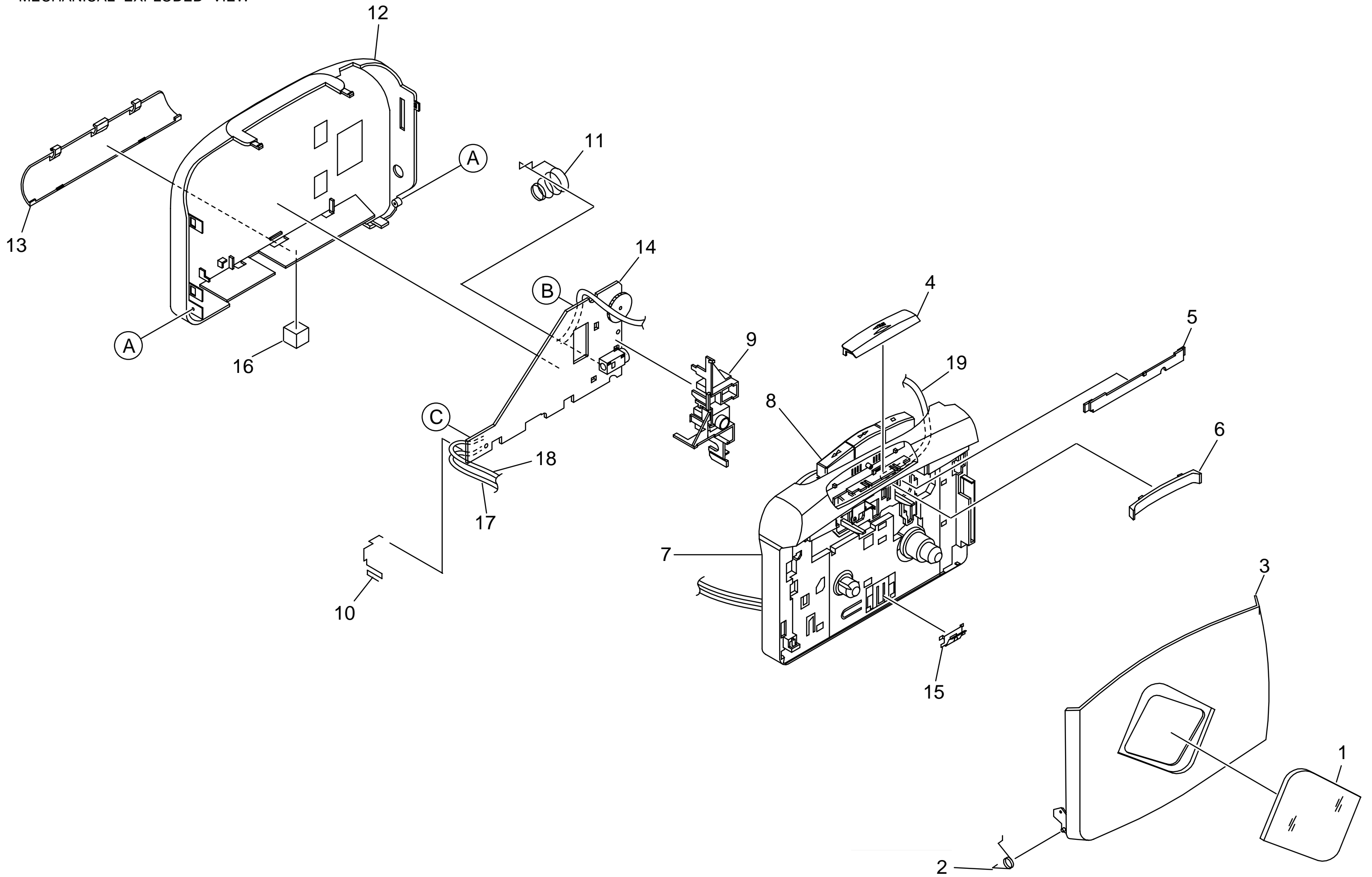
2. Head Azimuth Adjustment

Settings : • Test tape : TTA - 330 (TAPE CENTER)

- Test point : PHONES JACK (J1)
- Adjustment location : Head Azimuth Adjustment Screw
- Volume : NON-CLIP (MAX - 10dB DOWN)

Method : Play back the test tape and adjust the screw so that the output becomes maximum and same phase.

MECHANICAL EXPLODED VIEW



MECHANICAL PARTS LIST

! = Δ SAFTY PARTS
 C = Components marked

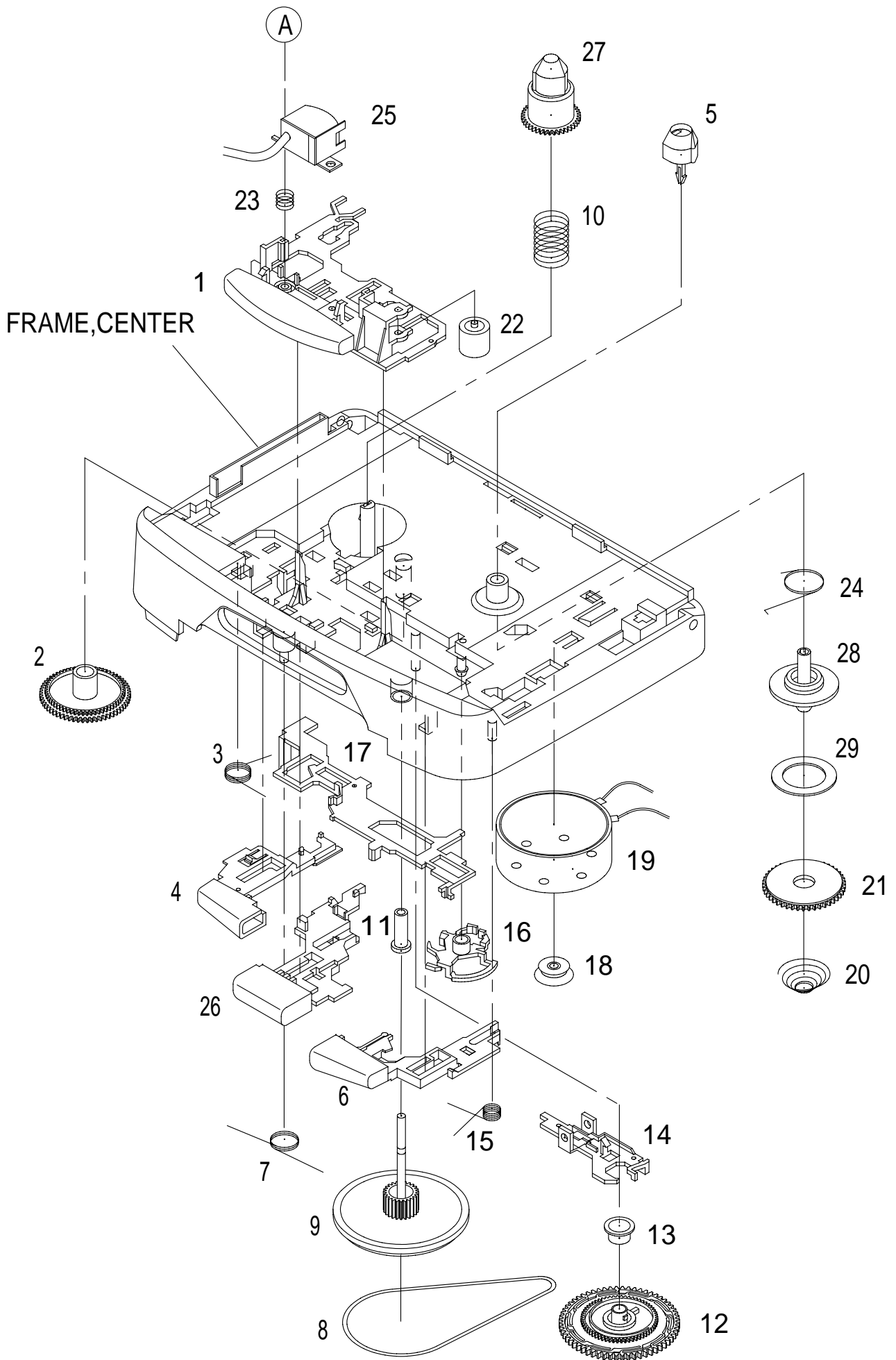
All components used on this model at the production line are shown in this service manual.
 However, please note that not all components will be available as spare parts for after-sales service.
 Components marked S and O are designated as spare parts for service and will be stocked at the spare parts centers.
 Components marked X and R are not designated as spare parts for after sales service, and will not be stocked at the spare parts centers.

UNIT-NAME	! C	REF-NO	PARTS-NO	PARTS-NAME	SUFFIX&MODEL		
					HS-PS183 YH1NC	HS-PS183 YH1LC	HS-PS183 YJ1LC
	O	MC1001	8C-HRM-007-010	WINDOW,CASS	a	b	c
	O	MC1002	86-HRM-205-010	SPR-T,CLICK	a	b	c
	O	MC1003	8C-HKB-001-010	LID,CASS 183 SG	a	.	.
	O	MC1003	8C-HKB-003-010	LID,CASS 183 BLU	.	b	c
	O	MC1003	8C-HKB-002-010	LID,CASS 183 SIL	.	.	.
	O	MC1004	8C-HRM-013-010	BTN,PLAY SIL 034	.	b	c
	O	MC1004	8C-HRM-031-010	BTN,PLAY N 004	a	.	.
	O	MC1005	8C-HRM-201-010	PLATE,HEAD 034	.	b	c
	O	MC1005	8C-HRM-205-010	PLATE,HEAD 004	a	.	.
	O	MC1006	8C-HRM-202-010	PLATE,BTN 034	.	b	c
	O	MC1006	8C-HRM-206-010	PLATE,BTN 004	a	.	.
	O	MC1007	8C-HRM-011-010	FRAME,CENTER 034	.	b	c
	O	MC1007	8C-HRM-030-010	FRAME,CENTER N 004	a	.	.
	X	MC1008	M8-4ZM-285-070	4ZM-2 P19NC2	a	b	c
	O	MC1009	8Z-HKA-201-110	HLDR,JACK	a	b	c
	O	MC1010	8B-HKA-201-010	BAT-CONTACT, (+)	a	b	c
	O	MC1011	8Z-HKA-205-010	BAT-CONTACT, (-)	a	b	c
	O	MC1012	8C-HKB-005-010	CABI,REAR H SG	a	.	.
	O	MC1012	8C-HKB-009-010	CABI,REAR H BLU	.	b	c
	O	MC1012	8C-HKB-007-010	CABI,REAR H SIL 049	.	.	.
					HS-PS183 YH1NC	HS-PS183 YH1LC	HS-PS183 YJ1LC
	O	MC1013	8C-HKB-012-010	LID,BATT BLU	.	b	c
	O	MC1013	8C-HKB-010-010	LID,BATT SG	a	.	.
	O	MC1013	8C-HKB-011-010	LID,BATT SIL 049	.	.	.
	X	MC1014	8B-HKA-611-010	PWB,MAIN	a	b	c
	O	MC1015	8B-HRL-208-010	SPR-P,CASS	a	b	c
	X	MC1016	8B-HRM-209-010	CUSH, 8-8-4	a	b	c
	X	MC1017	87-612-042-210	WIRE B2-4-2	a	b	c
	X	MC1018	87-610-042-210	WIRE B0-4-2	a	b	c
	X	MC1019	8B-HKA-604-010	WIRE,100MM SHIELD	a	b	c
	O	MC1A	87-067-815-110	VT+1.4-3(HL)	a	b	c
	O	MC1B	87-067-384-010	SCREWVT1.4-3.5HL	a	b	c
	O	MC1C	87-264-525-310	SCREW, V+1.7-2.5	a	b	c

COLOR NAME TABLE

Basic color symbol	Color	Basic color symbol	Color	Basic color symbol	Color
B	Black	C	Cream	D	Orange
G	Green	H	Gray	L	Blue
LT	Transparent Blue	N	Gold	P	Pink
R	Red	S	Silver	ST	Titan Silver
T	Brown	V	Violet	W	White
WT	Transparent White	Y	Yellow	YT	Transparent Yellow
LM	Metallic Blue	LL	Light Blue	GT	Transparent Green
LD	Dark Blue	DT	Transparent Orange	GM	Metallic Green
YM	Metallic Yellow	DM	Metallic Orange	PT	Transparent Pink
LA	Aqua Blue	GL	Light Green	HT	Transparent Gray
HM	Metallic Gray	NH	Champagne Gold	M	Wood Pattern

TAPE MECHANISM EXPLODED VIEW



TAPE MECHANISM PARTS LIST

! = Δ SAFTY PARTS
 C = Components marked

All components used on this model at the production line are shown in this service manual.
 However, please note that not all components will be available as spare parts for after-sales service.
 Components marked S and O are designated as spare parts for service and will be stocked at the spare parts centers.
 Components marked X and R are not designated as spare parts for after sales service, and will not be stocked at the spare parts centers.

UNIT-NAME	! C	REF-NO	PARTS-NO	PARTS-NAME	SUFFIX&MODEL
					4ZM-2 P19NC2
	O	ST1001	84-ZM2-079-010	LEVER, PLAY DENT GRAY	a
	O	ST1002	84-ZM2-211-110	GEAR, CONNECT	a
	O	ST1003	84-ZM2-222-110	SPR-T, PLAY	a
	O	ST1004	84-ZM2-078-010	LEVER, STOP DENT GRAY	a
	O	ST1005	84-ZM2-216-210	REEL TABLE, R	a
	O	ST1006	84-ZM2-076-010	LEVER, FF DENT GRAY	a
	O	ST1007	84-ZM2-223-110	SPR-T, REW STOP	a
	O	ST1008	84-ZM2-253-010	BELT, MAIN 118	a
	O	ST1009	09-001-421-010	FLY-WHL, P ASSY	a
	X	ST1009a	84-ZM2-221-110	FLY-WHL, P2	a
	X	ST1009b	84-ZM2-230-110	CAPSTAN, 1.8-23.3	a
	O	ST1010	84-ZM2-228-310	SPR-C, BT	a
	O	ST1011	84-ZM2-220-110	BRG, P	a
	O	ST1012	84-ZM2-210-210	GEAR, AUTO	a
	O	ST1013	84-ZM2-218-110	CAP, GEAR AUTO	a
	O	ST1014	84-ZM2-208-510	LEVER, SHIFT	a
	O	ST1015	84-ZM2-224-110	SPR-T, FF LOCK	a
	O	ST1016	84-ZM2-207-310	LEVER, AUTO	a
	O	ST1017	84-ZM2-206-410	LEVER, LOCK	a
	O	ST1018	84-ZM2-219-010	PULLEY, MOTOR	a
					4ZM-2 P19NC2
	O	ST1019	87-A91-379-010	MOT, BCY3B-13	a
	O	ST1020	84-ZM2-226-510	SPR-C, CLUTCH	a
	O	ST1021	84-ZM2-212-010	GEAR, CLUTCH	a
	O	ST1022	84-ZM2-233-210	ROLLER ASSY, PINCH	a
	X	ST1022a	84-ZM2-234-010	CLR, PINCH ROL	a
	X	ST1022b	84-ZM2-235-210	ROLLER, RUBBER	a
	O	ST1023	84-ZM2-227-310	SPR-C, AZIMUTH	a
	O	ST1024	84-ZM2-225-010	SPR-T, AUTO FIND	a
	O	ST1025	87-A91-529-010	HEAD, TC-950	a
	O	ST1026	84-ZM2-077-010	LEVER, REW DENT GRAY	a
	O	ST1027	84-ZM2-215-110	REEL TABLE, L	a
	X	ST1028	84-ZM2-217-210	SHAFT, REEL	a
	O	ST1029	84-ZM2-231-110	FELT, CLUTCH	a
	O	ST1A	84-ZM2-252-010	S-SCREW, AZI-2-6.4 C	a

ACCESSORIES PARTS LIST

! = Δ SAFTY PARTS

C = Components marked

All components used on this model at the production line are shown in this service manual.

However, please note that not all components will be available as spare parts for after-sales service.

Components marked S and O are designated as spare parts for service and will be stocked at the spare parts centers.

Components marked X and R are not designated as spare parts for after sales service, and will not be stocked at the spare parts centers.

UNIT-NAME	! C	REF-NO	PARTS-NO	PARTS-NAME	SUFFIX&MODEL		
					HS-PS183 YH1LC	HS-PS183 YH1NC	HS-PS183 YH1SC
	0	1	87-B30-448-010	HEADPHONE SET #HP-M029 (T2DG)	a	b	c
	0	2	8C-HKB-902-010	I/B (YHT,ECC,C) CHKB-91-02 S:	a	b	c

OTHERS PARTS LIST

! = Δ SAFTY PARTS
 C = Components marked

All components used on this model at the production line are shown in this service manual.
 However, please note that not all components will be available as spare parts for after-sales service.
 Components marked S and O are designated as spare parts for service and will be stocked at the spare parts centers.
 Components marked X and R are not designated as spare parts for after sales service, and will not be stocked at the spare parts centers.

UNIT-NAME	! C REF-NO	PARTS-NO	PARTS-NAME	SUFFIX&MODEL		
				HS-PS183 YH1LC	HS-PS183 YH1NC	HS-PS183 YH1SC
	X	8B-HKA-610-010	PCB CHKA-01-01, 02 155x121x1m	a	b	c
	X	87-B40-281-01J	(F809-00000A-100) BAR CODE LB	a	b	c
	X	87-B50-078-010	FACILITY LIST (S)-0007 S:295x	a	b	c
	X		PRODUCTION NECESSITY OF 4ZM-2	a	b	c
	X	8C-HKB-970-010	(F809-CHRM94-010) POP LABEL (a	b	c
	X	87-056-833-010	POLYBAG (P.P.) S:5.125"x9.5"	a	b	c
	X	87-056-868-010	BLUE COLOR LABEL (M) 3638-94-	a	.	.
	X	8C-HKB-851-010	G/B(183YH1S) CHKB-92-01, 4C+U	a	b	c
	X	8C-HKB-015-010	SPEC LABEL (183) CHKB-96-03 S	a	b	c
	X	87-B50-080-010	WARRANTY CARD, CHINA-0009 W-7	a	b	c
	X	87-056-869-010	COLOR LABEL (GOLD) "M" SIZE,	.	b	.
	X	8C-HKB-853-010	G/B (183YJ1S) CHKB-92-03, 4C+	.	.	.
	X	8C-HKB-013-010	SPEC LABEL (183J) CHKB-96-010	.	.	.
	X	8C-HRM-203-01	SH,ADHESIVE CASS	a	b	c
	X	87-B40-281-01	LBL,BAR-CODE A 35X8	a	b	c
	X	87-B40-154-01	LBL,BAR-CODE CU	a	b	c
	X	8C-HKB-015-01	LBL,SPEC 183	a	b	c
	X	8C-HKB-013-01	LBL,SPEC 183 J	.	.	.

アイワ株式会社 〒110-8710 東京都台東区池之端1-2-11 ☎03(3827)3111 (代表)
AIWA CO.,LTD. 2-11, IKENOHATA 1-CHOME, TAITO-KU, TOKYO 110-8710, JAPAN TEL:03 (3827) 3111

9720501 921338



SERVICE MANUAL

STEREO CASSETTE PLAYER

BASIC TAPE MECHANISM : 4ZM-2 P19NC2

- This Service Manual is the "Revision Publishing" and replaces "Simple Manual"
S/M Code No. 09-022-452-4T1.

aiwa

S/M Code No. 09-023-452-4R2

REVISION
DATA

SPECIFICATIONS

Maximum output:	4 mW + 4 mW (EIAJ 16 ohms)
Load impedance:	16 – 80 ohms
Power source:	DC 3 V using two R6 (size AA) batteries
Maximum outside dimensions	89.5 (W) x 116.5 (H) x 30.3 (D) mm (excluding projecting parts and control)
Weight	Approx. 109 g (excluding batteries)

- Design and specifications are subject to change without notice.

ELECTRICAL PARTS LIST

! = Δ SAFTY PARTS
 C = Components marked

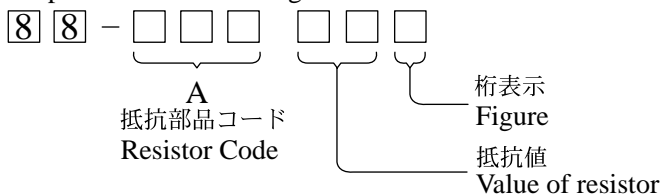
All components used on this model at the production line are shown in this service manual.
 However, please note that not all components will be available as spare parts for after-sales service.
 Components marked S and O are designated as spare parts for service and will be stocked at the spare parts centers.
 Components marked X and R are not designated as spare parts for after sales service, and will not be stocked at the spare parts centers.

UNIT-NAME	! C	REF-NO	PARTS-NO	PARTS-NAME	SUFFIX&MODEL	HS-PS183	HS-PS183
						Y1BSC	Y1LC
MAIN	0 C	0001	87-012-277-080	CHIP CAP 0.0018 uF/50V +-10%	a		b
MAIN	0 C	0002	87-012-277-080	CHIP CAP 0.0018 uF/50V +-10%	a		b
MAIN	0 C	0003	87-012-284-080	CHIP CAP 0.0068 uF/50V +-10%	a		b
MAIN	0 C	0004	87-012-284-080	CHIP CAP 0.0068 uF/50V +-10%	a		b
MAIN	0 C	0005	87-015-674-040	ELECT CAP 22 MFD/6.3V +-20% (a		b
MAIN	0 C	0006	87-015-674-040	ELECT CAP 22 MFD/6.3V +-20% (a		b
MAIN	0 C	0007	87-012-277-080	CHIP CAP 0.0018 uF/50V +-10%	a		b
MAIN	0 C	0008	87-012-277-080	CHIP CAP 0.0018 uF/50V +-10%	a		b
MAIN	0 C	0009	87-012-274-080	CHIP CAP 0.001 uF/50V +-10% (a		b
MAIN	0 C	0010	87-012-274-080	CHIP CAP 0.001 uF/50V +-10% (a		b
MAIN	0 C	0011	87-A10-489-040	ELECT CAP 220 MFD/4V +-20% (S	a		b
MAIN	0 C	0012	87-A10-489-040	ELECT CAP 220 MFD/4V +-20% (S	a		b
MAIN	0 C	0014	87-015-681-040	ELECT CAP 10 MFD/16V +-20% (S	a		b
MAIN	0 C	0015	87-010-831-080	CHIP CAP 0.1 uF/16V +80-20% (a		b
MAIN	0 C	0017	87-A11-056-080	CHIP CAP 1 uF/10V +80-20% (06	a		b
MAIN	0 C	0018	87-A11-056-080	CHIP CAP 1 uF/10V +80-20% (06	a		b
MAIN	0 C	0027	87-010-831-080	CHIP CAP 0.1 uF/16V +80-20% (a		b
MAIN	0 C	0051	87-015-695-040	ELECT CAP 1 MFD/50V +-20% (SMA	a		b
MAIN	S IC	0001	87-A21-684-04C	ICAMP-HEAD-ST-00001W TA2145AF	a		b
MAIN	0 J	0001	85-HRL-623-019	PHONE JACK 3.5mm STEREO TC38-	a		b
						HS-PS183	HS-PS183
						Y1BSC	Y1LC
MAIN	X R	0001	88-108-274-080	CHIP RESISTOR 270 Kohm +-5% 1	a		b
MAIN	X R	0002	88-108-274-080	CHIP RESISTOR 270 Kohm +-5% 1	a		b
MAIN	0 R	0003	88-108-223-080	CHIP RESISTOR 22 Kohm +-5% 1/	a		b
MAIN	0 R	0004	88-108-223-080	CHIP RESISTOR 22 Kohm +-5% 1/	a		b
MAIN	0 R	0005	88-108-561-080	CHIP RESISTOR 560 ohm +-5% 1/	a		b
MAIN	0 R	0006	88-108-561-080	CHIP RESISTOR 560 ohm +-5% 1/	a		b
MAIN	0 R	0007	88-108-153-080	CHIP RESISTOR 15 Kohm +-5% 1/	a		b
MAIN	0 R	0008	88-108-153-080	CHIP RESISTOR 15 Kohm +-5% 1/	a		b
MAIN	0 R	0013	88-108-562-080	CHIP RESISTOR 5.6 Kohm +-5% 1	a		b
MAIN	X R	0014	88-108-000-080	CHIP RESISTOR 0 ohm +-5% 1/16	a		b
MAIN	X R	0016	88-108-330-080	CHIP RESISTOR 33 ohm +-5% 1/1	a		b
MAIN	X R	0017	88-108-330-080	CHIP RESISTOR 33 ohm +-5% 1/1	a		b
MAIN	X R	0018	88-108-000-080	CHIP RESISTOR 0 ohm +-5% 1/16	a		b
MAIN	0 R	0020	88-108-102-080	CHIP RESISTOR 1 Kohm +-5% 1/1	a		b
MAIN	X R	0021	88-108-183-080	CHIP RESISTOR 18 Kohm +-5% 1/	a		b
MAIN	X R	0022	88-108-183-080	CHIP RESISTOR 18 Kohm +-5% 1/	a		b
MAIN	0 R	0051	87-A00-530-080	CHIP RESISTOR 180 ohm +-1% 1/	a		b
MAIN	X R	0053	88-108-182-080	CHIP RESISTOR 1.8 Kohm +-5% 1	a		b
MAIN	X R	0054	88-108-221-080	CHIP RESISTOR 220 ohm +-5% 1/	a		b
MAIN	0 SFR	0051	87-024-197-010	SEMI-FIXED 1 Kohm #VZ066L4/L3	a		b
						HS-PS183	HS-PS183
						Y1BSC	Y1LC
MAIN	0 SW	0001	87-A90-133-110	(F022-001120-001) LEAF SWITCH	a		b
MAIN	0 VR	0001	87-A91-581-110	VR-C&M1GH020KB&SH&D 20KB RK1	a		b
MAIN	X W	0001	87-610-042-210	JP WIRE AWG26#1007 3x3mm 40mm	a		b
MAIN	X W	0002	87-612-042-210	JP WIRE AWG26#1007 3x3mm 40mm	a		b
MAIN	X W	0003	8B-HKA-604-010	SHIELD WIRE TWIN CORE,2mm,100	a		b

○チップ抵抗部品コード／CHIP RESISTOR PART CODE

チップ抵抗部品コードの成り立ち

Chip Resistor Part Coding



チップ抵抗
Chip resistor

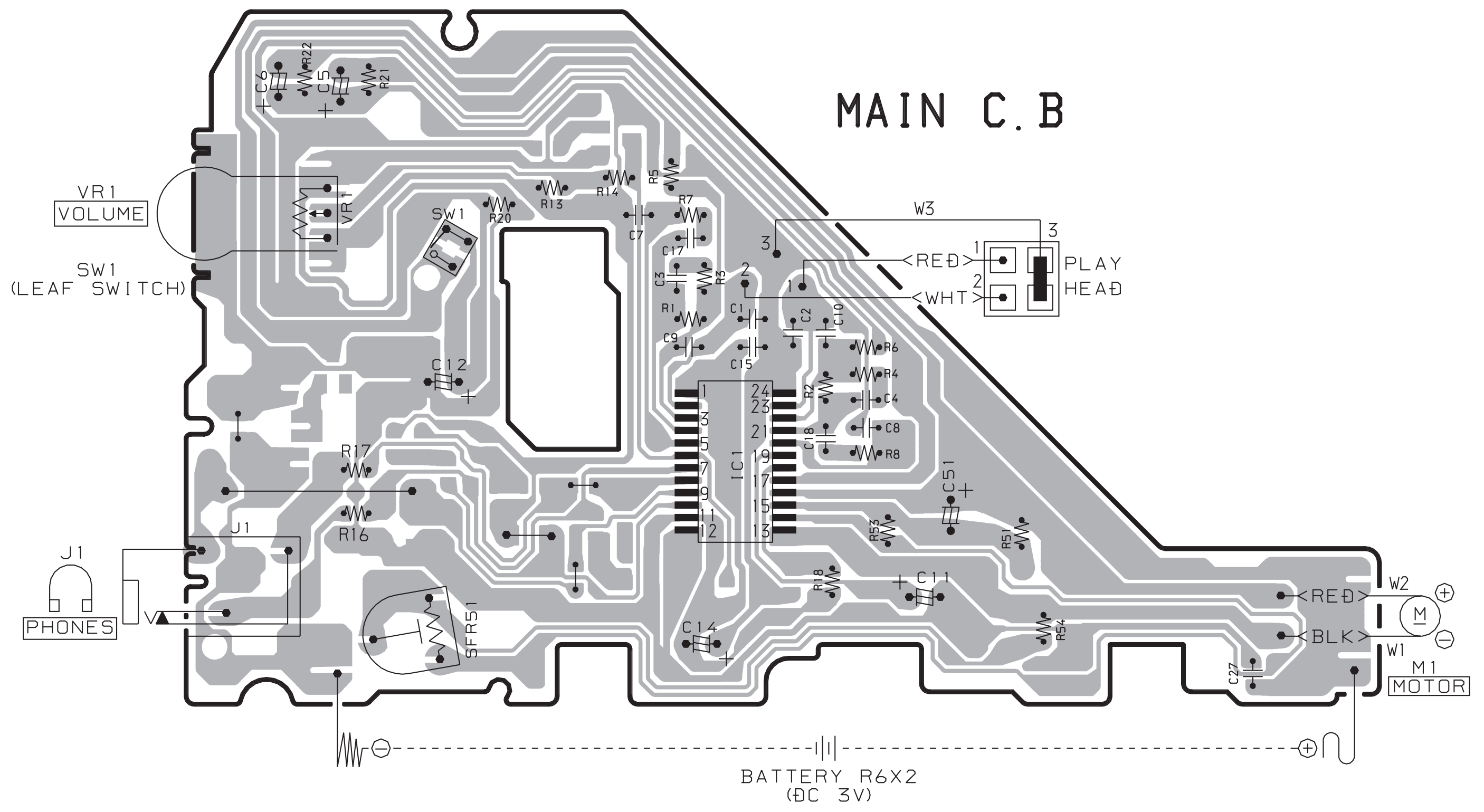
容量 Wattage	種類 Type	許容誤差 Tolerance	記号 Symbol	寸法/Dimensions (mm)			抵抗コード : A Resistor Code : A	
				外形/Form	L	W		t
1/16W	1005	± 5%	CJ		1.0	0.5	0.35	104
1/16W	1608	± 5%	CJ		1.6	0.8	0.45	108
1/10W	2125	± 5%	CJ		2	1.25	0.45	118
1/8W	3216	± 5%	CJ		3.2	1.6	0.55	128

WIRING

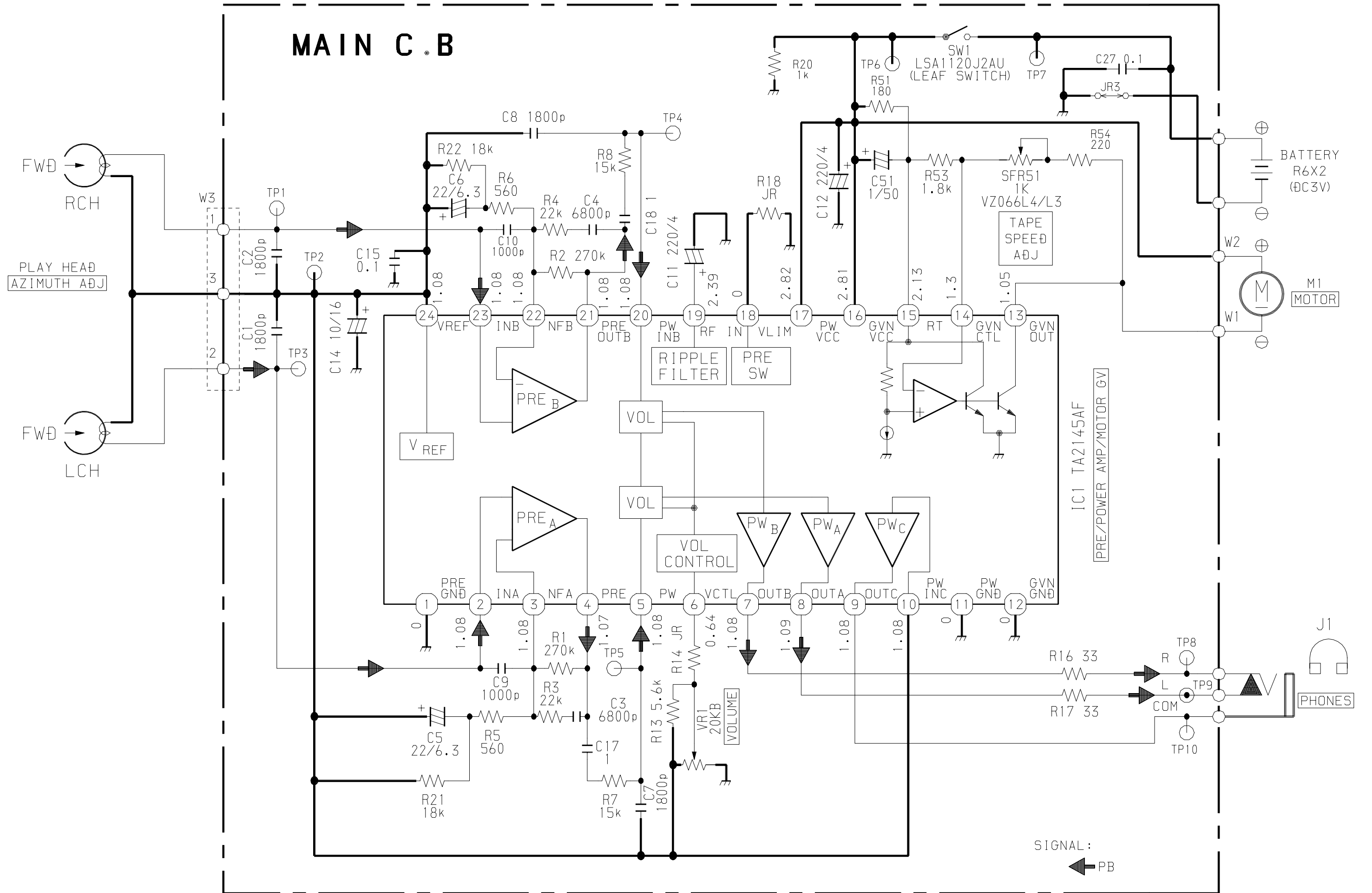
32 31 30 29 28 27 26 25 24 23 22 21 20 19 18 17 16 15 14 13 12 11 10 9 8 7 6 5 4 3 2 1

A
B
C
D
E
F
G
H
I
J
K
L
M
N
O
P
Q
R
S
T
U

MAIN C.B



SCHEMATIC DIAGRAM



ADJUSTMENT

1. Tape Speed Adjustment

Settings : • Test tape : TTA - 100 (TAPE CENTER)

- Test point : PHONES JACK (J1)
- Adjustment location : SFR 51
- Volume : NON-CLIP (MAX - 10dB DOWN)

Method : Play back the test tape and adjust SFR 51 so that the frequency is $3000 \text{ Hz} \pm 60 \text{ Hz}$. Then confirm WOW is less than 0.50%.

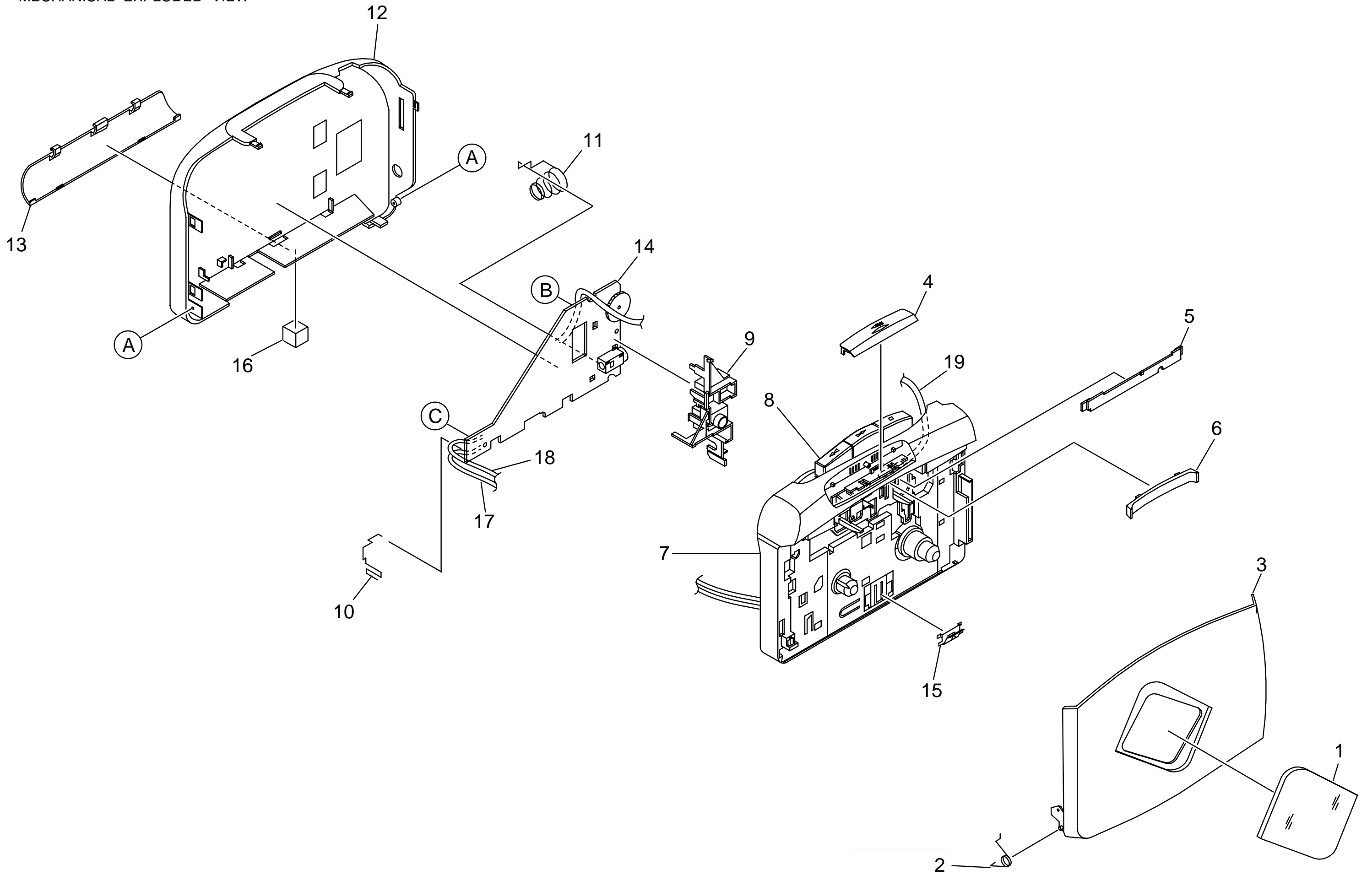
2. Head Azimuth Adjustment

Settings : • Test tape : TTA - 330 (TAPE CENTER)

- Test point : PHONES JACK (J1)
- Adjustment location : Head Azimuth Adjustment Screw
- Volume : NON-CLIP (MAX - 10dB DOWN)

Method : Play back the test tape and adjust the screw so that the output becomes maximum and same phase.

MECHANICAL EXPLODED VIEW



MECHANICAL PARTS LIST

! = Δ SAFTY PARTS
 C = Components marked

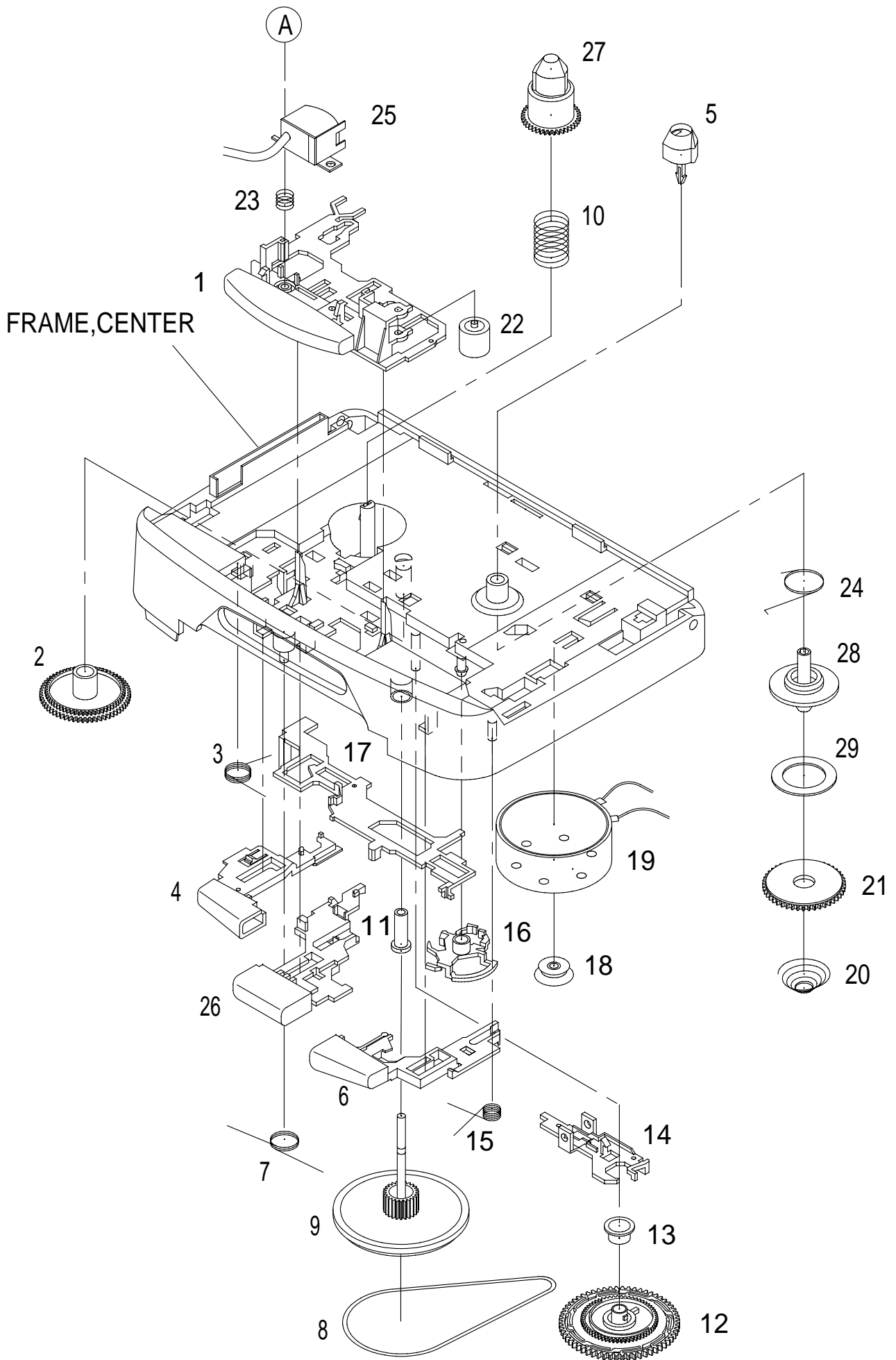
All components used on this model at the production line are shown in this service manual.
 However, please note that not all components will be available as spare parts for after-sales service.
 Components marked S and O are designated as spare parts for service and will be stocked at the spare parts centers.
 Components marked X and R are not designated as spare parts for after sales service, and will not be stocked at the spare parts centers.

UNIT-NAME	! C	REF-NO	PARTS-NO	PARTS-NAME	SUFFIX&MODEL	
					HS-PS183 Y1LC	HS-PS183 Y1BSC
	O	MC1001	8C-HRM-007-010	WINDOW,CASS	a	b
	O	MC1002	86-HRM-205-010	SPR-T,CLICK	a	b
	O	MC1003	8C-HKB-017-010	LID,CASS 183 BLU EG	a	.
	O	MC1003	8C-HKB-016-010	LID,CASS 183 SIL EG	.	b
	O	MC1004	8C-HRM-013-010	BTN,PLAY SIL 034	a	b
	O	MC1005	8C-HRM-201-010	PLATE,HEAD 034	a	b
	O	MC1006	8C-HRM-202-010	PLATE,BTN 034	a	b
	O	MC1007	8C-HRM-011-010	FRAME,CENTER 034	a	b
	X	MC1008	M8-4ZM-285-070	4ZM-2 P19NC2	a	b
	O	MC1009	8Z-HKA-201-110	HLDR,JACK	a	b
	O	MC1010	8B-HKA-201-010	BAT-CONTACT, (+)	a	b
	O	MC1011	8Z-HKA-205-010	BAT-CONTACT, (-)	a	b
	O	MC1012	8C-HKB-008-010	CABI,REAR BLU	a	.
	O	MC1012	8C-HKB-006-010	CABI,REAR SIL 049	.	b
	O	MC1013	8C-HKB-012-010	LID,BATT BLU	a	.
	O	MC1013	8C-HKB-011-010	LID,BATT SIL 049	.	b
	X	MC1014	8B-HKA-611-010	PWB,MAIN	a	b
	O	MC1015	8B-HRL-208-010	SPR-P,CASS	a	b
	X	MC1016	8B-HRM-209-010	CUSH, 8-8-4	a	b
	X	MC1017	87-612-042-210	WIRE B2-4-2	a	b
					HS-PS183 Y1LC	HS-PS183 Y1BSC
	X	MC1018	87-610-042-210	WIRE B0-4-2	a	b
	X	MC1019	8B-HKA-604-010	WIRE,100MM SHIELD	a	b
	O	MC1A	87-067-815-110	VT+1.4-3(HL)	a	b
	O	MC1B	87-067-384-010	SCREWVT1.4-3.5HL	a	b
	O	MC1C	87-264-525-310	SCREW, V+1.7-2.5	a	b

COLOR NAME TABLE

Basic color symbol	Color	Basic color symbol	Color	Basic color symbol	Color
B	Black	C	Cream	D	Orange
G	Green	H	Gray	L	Blue
LT	Transparent Blue	N	Gold	P	Pink
R	Red	S	Silver	ST	Titan Silver
T	Brown	V	Violet	W	White
WT	Transparent White	Y	Yellow	YT	Transparent Yellow
LM	Metallic Blue	LL	Light Blue	GT	Transparent Green
LD	Dark Blue	DT	Transparent Orange	GM	Metallic Green
YM	Metallic Yellow	DM	Metallic Orange	PT	Transparent Pink
LA	Aqua Blue	GL	Light Green	HT	Transparent Gray
HM	Metallic Gray	NH	Champagne Gold	M	Wood Pattern

TAPE MECHANISM EXPLODED VIEW



! = Δ SAFTY PARTS
 C = Components marked

All components used on this model at the production line are shown in this service manual.
 However, please note that not all components will be available as spare parts for after-sales service.
 Components marked S and O are designated as spare parts for service and will be stocked at the spare parts centers.
 Components marked X and R are not designated as spare parts for after sales service, and will not be stocked at the spare parts centers.

UNIT-NAME	! C	REF-NO	PARTS-NO	PARTS-NAME	SUFFIX&MODEL
					4ZM-2 P19NC2
	O	ST1001	84-ZM2-079-010	LEVER,PLAY DENT GRAY	a
	O	ST1002	84-ZM2-211-110	GEAR,CONNECT	a
	O	ST1003	84-ZM2-222-110	SPR-T,PLAY	a
	O	ST1004	84-ZM2-078-010	LEVER,STOP DENT GRAY	a
	O	ST1005	84-ZM2-216-210	REEL TABLE,R	a
	O	ST1006	84-ZM2-076-010	LEVER,FF DENT GRAY	a
	O	ST1007	84-ZM2-223-110	SPR-T,REW STOP	a
	O	ST1008	84-ZM2-253-010	BELT,MAIN 118	a
	O	ST1009	09-001-421-010	FLY-WHL,P ASSY	a
	X	ST1009a	84-ZM2-221-110	FLY-WHL,P2	a
	X	ST1009b	84-ZM2-230-110	CAPSTAN, 1.8-23.3	a
	O	ST1010	84-ZM2-228-310	SPR-C,BT	a
	O	ST1011	84-ZM2-220-110	BRG,P	a
	O	ST1012	84-ZM2-210-210	GEAR,AUTO	a
	O	ST1013	84-ZM2-218-110	CAP,GEAR AUTO	a
	O	ST1014	84-ZM2-208-510	LEVER,SHIFT	a
	O	ST1015	84-ZM2-224-110	SPR-T,FF LOCK	a
	O	ST1016	84-ZM2-207-310	LEVER,AUTO	a
	O	ST1017	84-ZM2-206-410	LEVER,LOCK	a
	O	ST1018	84-ZM2-219-010	PULLEY,MOTOR	a
					4ZM-2 P19NC2
	O	ST1019	87-A91-379-010	MOT,BCY3B-13	a
	O	ST1020	84-ZM2-226-510	SPR-C,CLUTCH	a
	O	ST1021	84-ZM2-212-010	GEAR,CLUTCH	a
	O	ST1022	84-ZM2-233-210	ROLLER ASSY,PINCH	a
	X	ST1022a	84-ZM2-234-010	CLR,PINCH ROL	a
	X	ST1022b	84-ZM2-235-210	ROLLER,RUBBER	a
	O	ST1023	84-ZM2-227-310	SPR-C,AZIMUTH	a
	O	ST1024	84-ZM2-225-010	SPR-T,AUTO FIND	a
	O	ST1025	87-A91-529-010	HEAD,TC-950	a
	O	ST1026	84-ZM2-077-010	LEVER,REW DENT GRAY	a
	O	ST1027	84-ZM2-215-110	REEL TABLE,L	a
	X	ST1028	84-ZM2-217-210	SHAFT,REEL	a
	O	ST1029	84-ZM2-231-110	FELT,CLUTCH	a
	O	ST1A	84-ZM2-252-010	S-SCREW,AZI-2-6.4 C	a

! = Δ SAFTY PARTS
C = Components marked

All components used on this model at the production line are shown in this service manual.

However, please note that not all components will be available as spare parts for after-sales service.

Components marked S and O are designated as spare parts for service and will be stocked at the spare parts centers.

Components marked X and R are not designated as spare parts for after sales service, and will not be stocked at the spare parts centers.

UNIT-NAME	! C	REF-NO	PARTS-NO	PARTS-NAME	SUFFIX&MODEL	
					HS-PS183	HS-PS183
					Y1BSC	Y1LC
	0	1	87-B30-448-010	HEADPHONE SET #HP-M029(T2DG)	a	b
	0	2	8C-HKB-906-010	I/B (Y,EDPHC,C) CHKB-91-04 S:	a	b
	0	3	8C-HKB-905-010	I/B (Y,EGFSI,C) CHKB-91-03 S:	a	b

! = Δ SAFTY PARTS
 C = Components marked

All components used on this model at the production line are shown in this service manual.
 However, please note that not all components will be available as spare parts for after-sales service.
 Components marked S and O are designated as spare parts for service and will be stocked at the spare parts centers.
 Components marked X and R are not designated as spare parts for after sales service, and will not be stocked at the spare parts centers.

UNIT-NAME	! C	REF-NO	PARTS-NO	PARTS-NAME	SUFFIX&MODEL
					HS-PS183 Y1BSC
					HS-PS183 Y1LC
	X		8B-HKA-610-010	PCB CHKA-01-01, 02 155x121x1m	a
	X		87-B40-281-01J	(F809-00000A-100) BAR CODE LB	a
	X		87-B50-078-010	FACILITY LIST (S)-0007 S:295x	a
	X			PRODUCTION NECESSITY OF 4ZM-2	a
	X		8C-HKB-018-010	SPEC LABEL (183C) CHKB-96-04,	a
	X		8C-HKB-876-010	BLISTER CARD CHKB-95-01 S:430	a
	X		8C-HKB-875-010	BOTTOM BLISTER (IN-EAR) CHKB	a
	X		8C-HRM-887-010	TOP BLISTER (Y1BSC) CHRM-97,(a
	X		8C-HKB-970-010	(F809-CHRM94-010) POP LABEL (.
	X		87-056-833-010	POLYBAG (P.P.) S:5.125"x9.5"	.
	X		87-056-868-010	BLUE COLOR LABEL (M) 3638-94-	.
	X		8C-HKB-852-010	G/B (183Y1S) CHKB-92-02, 4C+U	.
	X		87-056-168-01C	INFORMATION WARRANTY SHEET 44	a
	X		8C-HRM-203-01	SH,ADHESIVE CASS	a
	X		87-B40-281-01	LBL,BAR-CODE A 35X8	a
	X		87-B40-154-01	LBL,BAR-CODE CU	a
	X		8C-HKB-015-01	LBL,SPEC 183	a

アイワ株式会社 〒110-8710 東京都台東区池之端1-2-11 ☎03(3827)3111 (代表)
AIWA CO.,LTD. 2-11, IKENOHATA 1-CHOME, TAITO-KU, TOKYO 110-8710, JAPAN TEL:03 (3827) 3111

9720501 921338