

SERVICE MANUAL

STEREO CASSETTE PLAYER

BASIC TAPE MECHANISM : CL-850-5 SIL
CL-850-5 WHT

- This Service Manual contains information about the difference between HS-GMX70 (Y1SC) and HS-GMX600 (Y) / HS-PX008 (YH1LTCC, YH1PTCC) and HS-PX107 (YH). If requiring the other information, see Service Manual of HS-GMX600 (Y) / HS-PX107 (YU, Y), (S/M Code No. 09-002-425-7R1) and HS-PX107 (YH), (S/M Code No. 09-005-425-7R2).
- This Service Manual is for HS-GMX70 (Y1SC) Silver color / HS-PX008 (YH1LTCC, YH1PTCC) Transparent Blue and Transparent Pink color.

SPECIFICATIONS

Maximum output:	4 mW + 4 mW (EIAJ 16 ohms)<Y> 5 mW + 5 mW (EIAJ 32 ohms)<YH>
Load Impedance:	16 – 32 ohms<Y>
Power source:	DC 3 V using two R6 (AA) dry cell batteries, AC house current using the optional AC adaptor AC-D302
Battery life (EIAJ 1 mW output):	Aprox. 24 hours using two LR6 (AA) alkaline batteries
Maximum outside dimensions:	112.9 (W) x 84 (H) x 29.3 (D) mm (excluding projecting parts and controls) (4 1/2 x 3 3/8 x 1 3/16 in.)
Weight	Approx. 124 g (4.3 oz) excluding batteries

- Design and specifications are subject to change without notice.

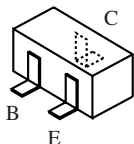
ACCESSORIES / PACKAGE LIST

REF. NO.	PART NO.	KANRI NO.	DESCRIPTION
1	8A-HKG-935-010	IB, Y (EGFSI) C	GMX70<Y>
1	8A-HKG-936-010	IB, Y (EDPHCZ) C	GMX70<Y>
1	8A-HKG-923-110	IB, YH (ECC) C	008<YH>
2	87-B30-398-010	HEADPHONE, HP-M007 (F2)	<Y>
2	87-B30-390-010	HEADPHONE, HP-M041 (S)	<YH>
3	8A-HKG-951-010	RC UNIT, RC008	<YH>

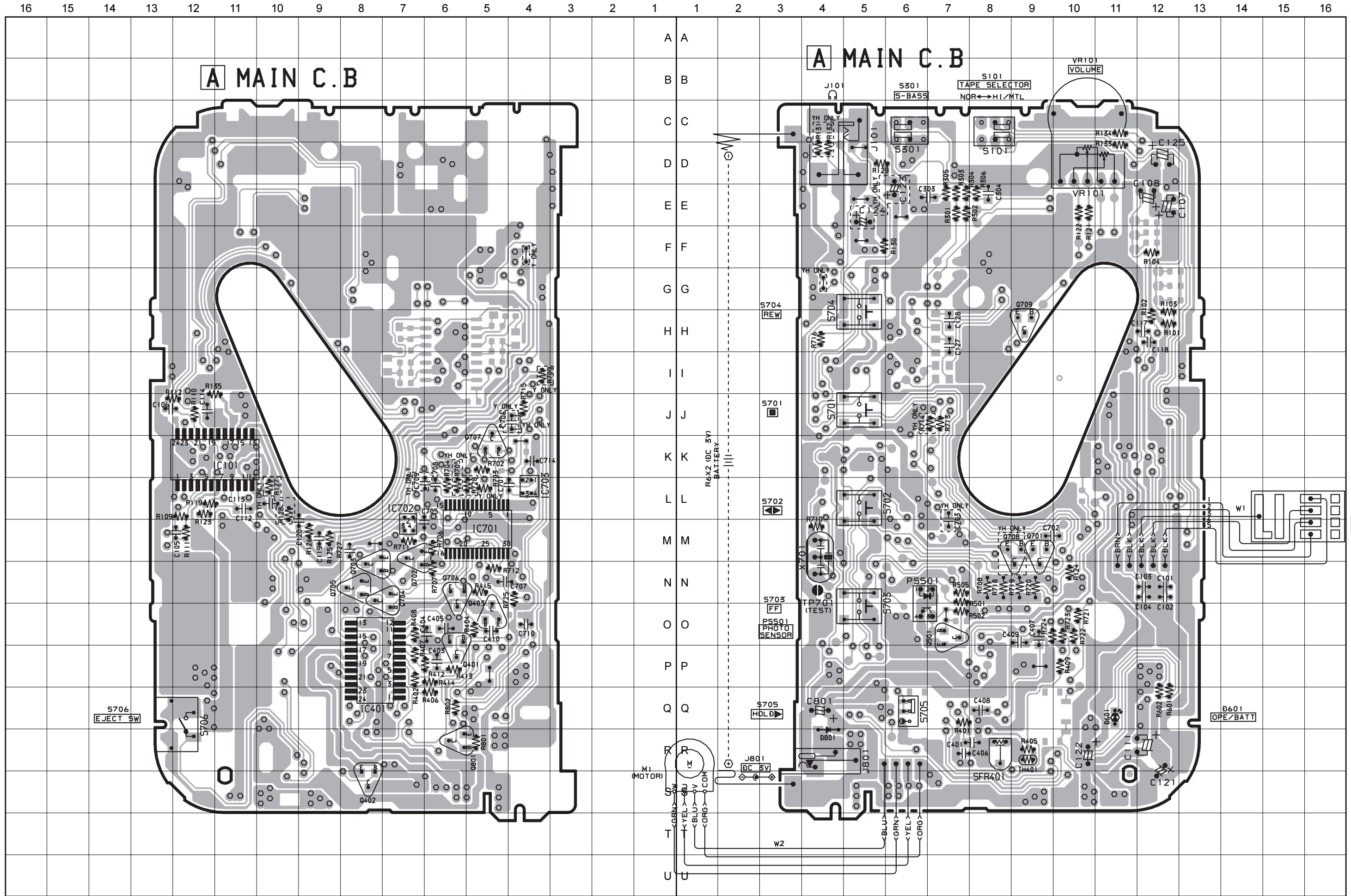
ELECTRICAL MAIN PARTS LIST

REF. NO.	PART NO.	KANRI NO.	DESCRIPTION	REF. NO.	PART NO.	KANRI NO.	DESCRIPTION
IC							
	87-002-677-080		C-IC,TA2002F	C401	87-A10-201-080		C-CAP,S 0.33-16 KB
	87-A20-532-140		C-IC,LB1977M-TLM	C403	87-010-805-080		C-CAP,U 1-16 Z F
	87-A21-567-040		C-IC,TMP47C443LDM-1B45 (EL)	C404	87-016-526-080		C-CAP,S 0.47-16 K B
	87-A21-566-040		C-IC,S-80820ANNP	C405	87-010-992-080		C-CAP,S 0.047-25 B
	87-A21-565-040		C-IC,S-80817ANNP	C406	87-010-831-080		C-CAP,U 0.1-16 Z F
TRANSISTOR							
	89-327-125-080		C-TR,2SC2712GR	C407	87-010-992-080		C-CAP,S 0.047-25 B
	89-113-625-080		C-TR,2SA1362GR	C408	87-010-992-080		C-CAP,S 0.047-25 B
	87-026-581-080		C-TR,RN2405	C409	87-010-992-080		C-CAP,S 0.047-25 B
	87-A30-085-040		C-TR,CSA1362GR	C410	87-010-831-080		C-CAP,U 0.1-16 Z F
	87-026-267-080		C-TR,RN2407	C701	87-010-831-080		C-CAP,U 0.1-16 Z F
DIODE							
	87-A40-822-040		C-DIODE,CRS01	C702	87-012-141-080		C-CAP,S 0.22-16 Z F
MAIN C.B							
C101	87-012-275-080		C-CAP,U 1200P-50 B	C703	87-012-141-080		C-CAP,S 0.22-16 Z F<YH>
C102	87-012-275-080		C-CAP,U 1200P-50 B	C705	87-010-831-080		C-CAP,U 0.1-16 Z F
C103	87-012-275-080		C-CAP,U 1200P-50 B	C706	87-010-805-080		CAP, S 1-16<Y>
C104	87-012-275-080		C-CAP,U 1200P-50 B	C707	87-010-196-080		C-CAP,S 0.1-25
C105	87-012-276-080		C-CAP,U 1500P-50	C708	87-010-831-080		C-CAP,U 0.1-16 Z F
C106	87-012-276-080		C-CAP,U 1500P-50	C709	87-010-831-080		C-CAP,U 0.1-16 Z F<YH>
C107	87-010-501-010		CAP,E 47-4V	C710	87-010-831-080		C-CAP,U 0.1-16 Z F
C108	87-010-501-010		CAP,E 47-4V	C714	87-010-831-080		C-CAP,U 0.1-16 Z F
C111	87-015-688-010		CAP,E 4.7-35	C801	87-A10-489-010		CAP,E 220-4 7L SR
C112	87-012-142-080		CAP, S 0.33-16	D601	87-A91-355-040		C-LED,BR1112H-TR-RED
C113	87-010-805-080		CAP, S 1-16	J101	87-A60-438-010		JACK,3.5 BLK ST W/O SW(1537)<Y>
C114	87-012-141-080		C-CAP,S 0.22-16 Z F C2012	J101	87-A60-437-010		JACK,3.5 BLK ST W/O SW 4P(1637)<YH>
C117	87-012-278-080		C-CAP,U 2200P-50 B	J801	87-A61-124-010		JACK,DC DIA2.75 BLK TC
C118	87-012-278-080		C-CAP,U 2200P-50 B	PS501	87-A90-440-010		SNSR,PHOTO GP2S24N2-B
C119	87-010-831-080		C-CAP,U 0.1-16 Z F	R713	87-022-245-080		C-RES U 18K-1/16W F
C120	87-010-831-080		C-CAP,U 0.1-16 Z F	R714	87-022-245-080		C-RES U 18K-1/16W F<YH>
C121	87-010-502-010		CAP,E 100-4 M KS	R727	87-010-831-080		C-CAP,U 0.1-16 Z F
C122	87-010-503-010		CAP,E 220-4 M 5L	S101	87-A90-050-010		SW, SL 2-2-2 NS (BLK)
C123	87-010-502-010		CAP,E 100-4 M KS<YH>	S301	87-A90-050-010		SW, SL 2-2-2 NS (BLK)
C124	87-010-502-010		CAP,E 100-4 M KS<YH>	S701	87-A90-665-280		C-SW,TACT LS7A2M
C125	87-010-501-010		CAP,E 47-4V M KS	S702	87-A90-665-280		C-SW,TACT LS7A2M
C127	87-010-805-080		C-CAP,S 1-16	S703	87-A90-665-280		C-SW,TACT LS7A2M
C128	87-010-805-080		C-CAP,S 1-16	S704	87-A90-665-280		C-SW,TACT LS7A2M
C303	87-010-196-080		C-CAP,S 0.1-25	S705	87-036-379-180		C-SW,SL1-1-2 SS350
C304	87-010-196-080		C-CAP,S 0.1-25	S706	87-A91-365-080		C-SW,PUSH 1-1-1 SPVG21
				SFR401	87-A91-653-040		C-SFR,K 33K H R H03AEC
				TH401	87-A91-675-080		C-THMS,NTH5G16P39B472K 07TH
				VR101	87-A91-650-010		VR,RTRY 50KCX2 H XV0102G
				X701	87-A70-241-010		VIB,CER 4.000MHZ CS1TS0400MG03

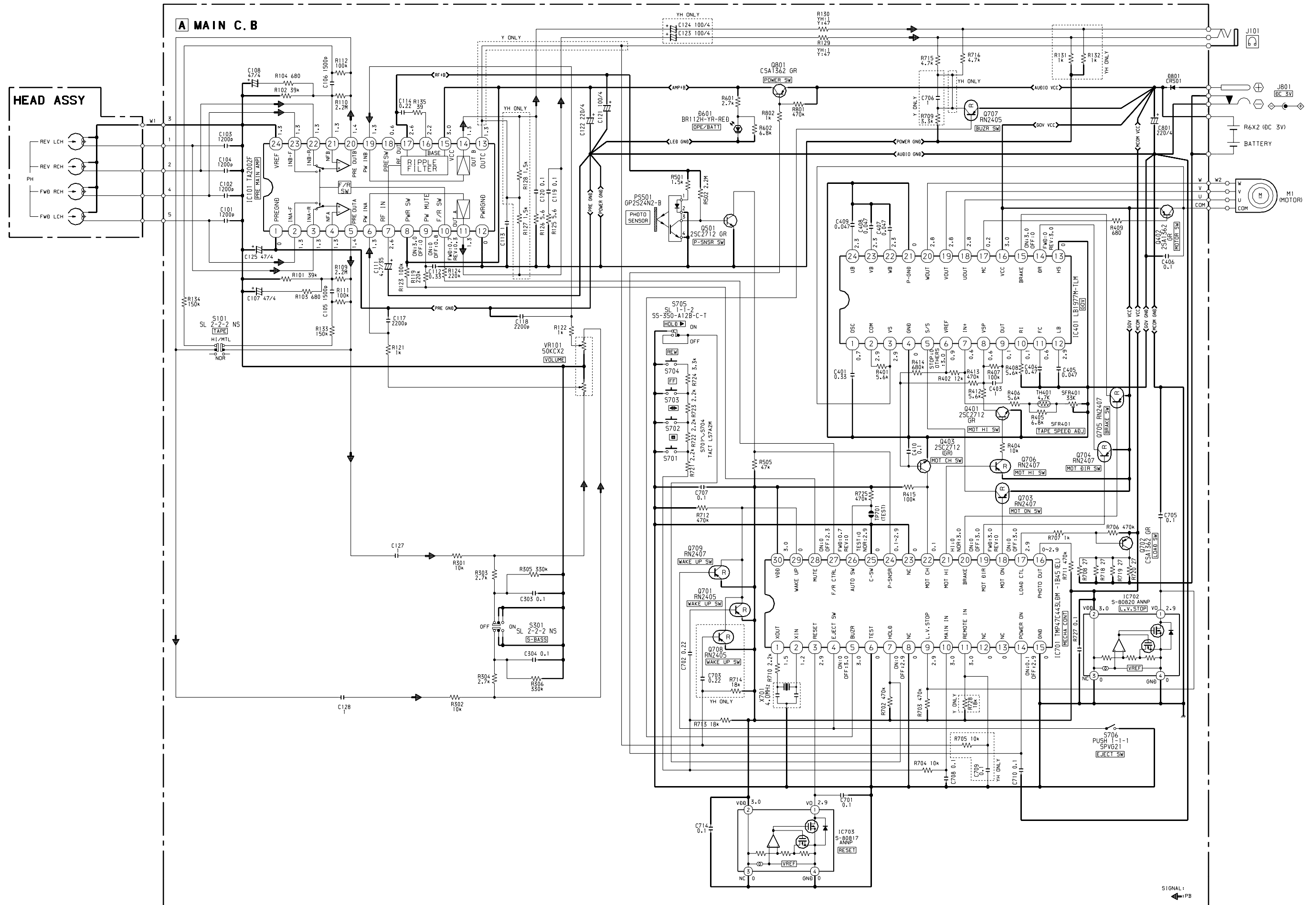
TRANSISTOR ILLUSTRATION



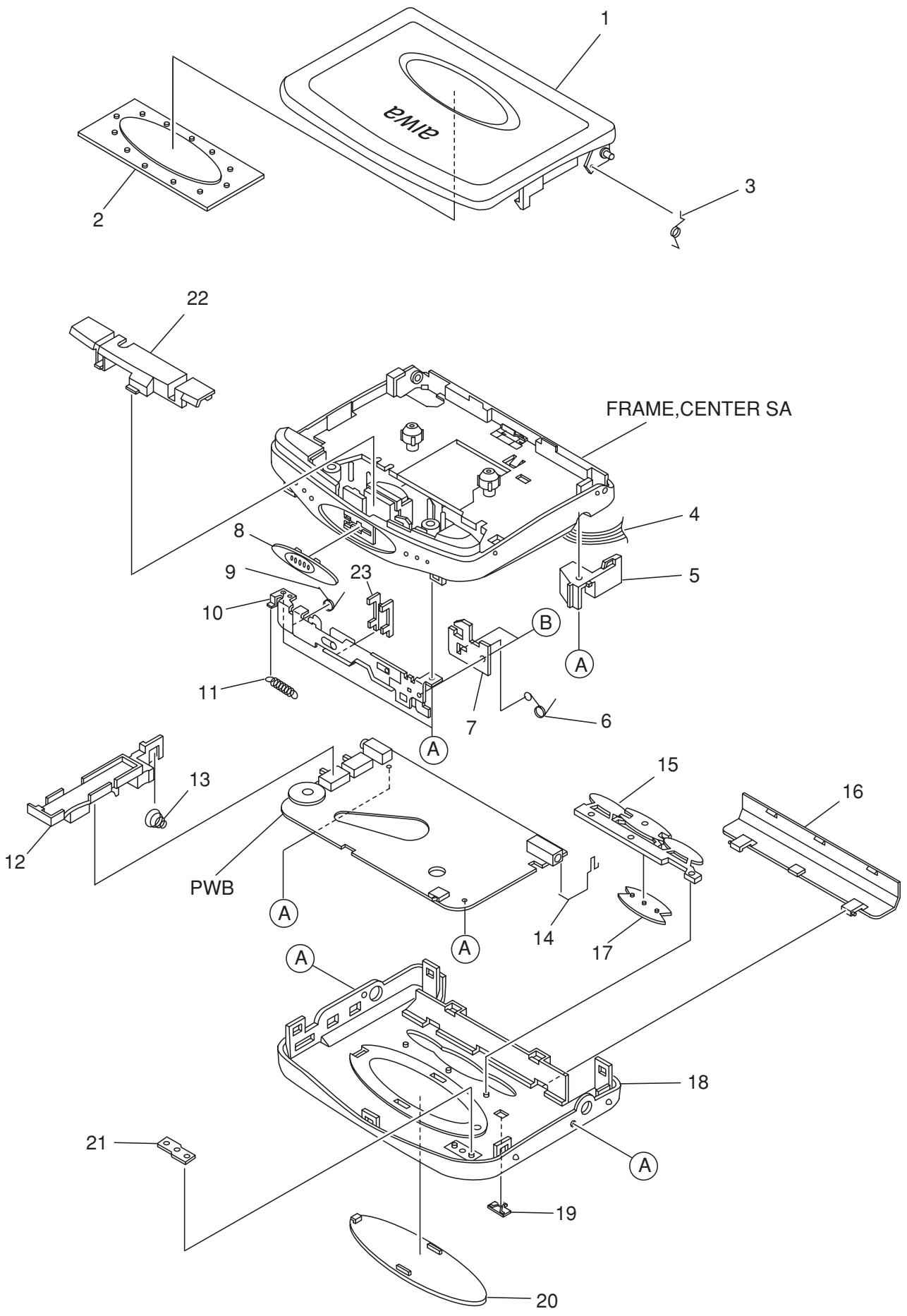
2SA1362
2SC2712
CSA1362
RN2405
RN2407



SCHEMATIC DIAGRAM



MECHANICAL EXPLODED VIEW 1 / 1



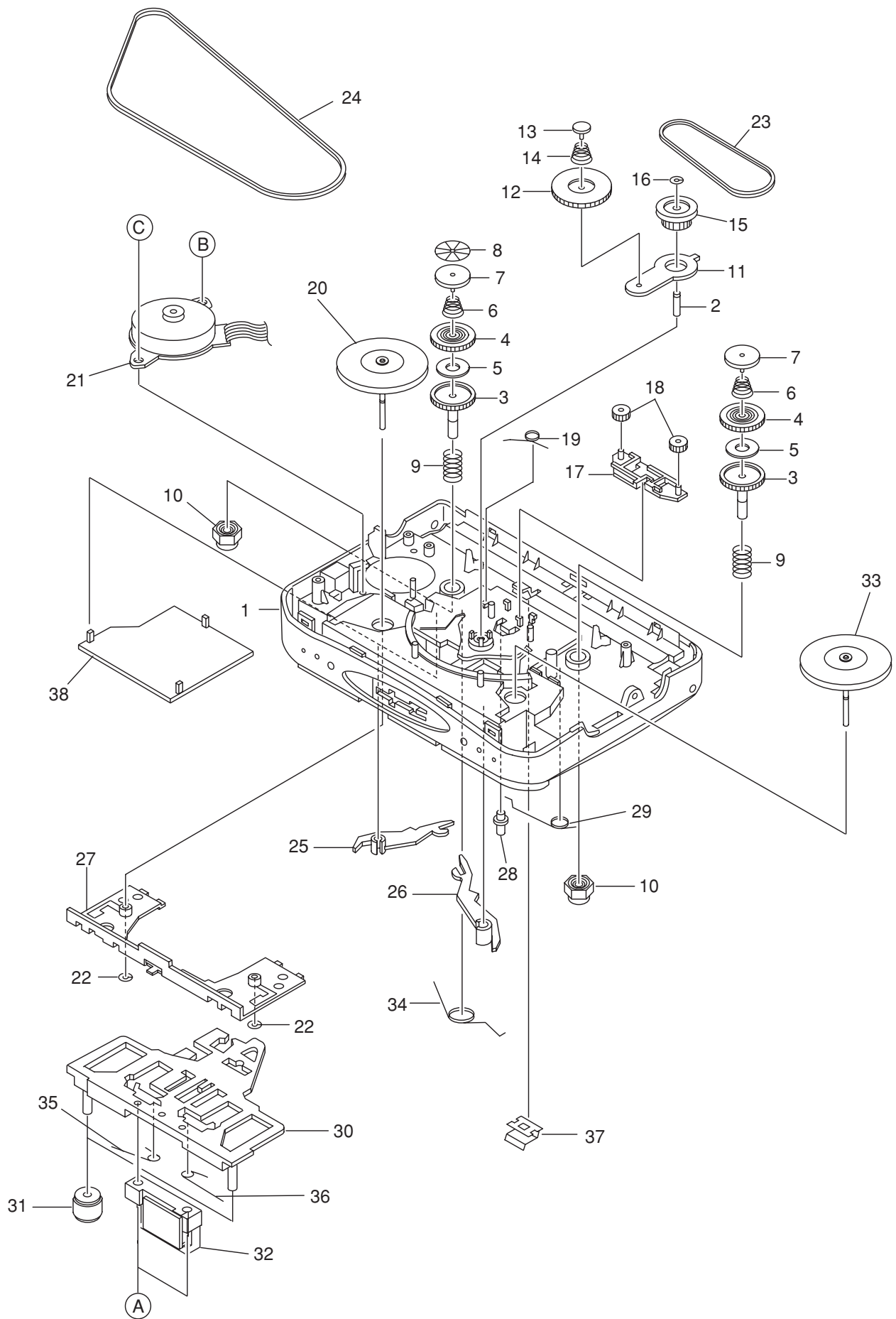
MECHANICAL PARTS LIST 1 / 1

REF. NO.	PART NO.	KANRI NO.	DESCRIPTION
1	8A-HKF-018-010		LID,CASS P SIL EG<Y1SC>
1	8A-HKG-054-010		LID,CASS PX008 T-BLU<YH1LTCC>
1	8A-HKG-050-010		LID,CASS PX008 T-PNK<YH1PTCC>
2	8A-HKG-029-010		WINDOW,CASS T-PNK<YH1PTCC>
2	8A-HR8-002-010		WINDOW,CASS<EXCEPT YH1PTCC>
3	8A-HR8-213-010		SPR-T,CASS
4	8A-HR8-603-010		RBN-CORD,4P MOTOR
5	8A-HR8-216-010		HLLDR,DC
6	8A-HR8-210-010		SPR-T,LOCK
7	8A-HR8-208-010		PLATE,LOCK
8	8A-HR8-005-210		KNOB,SL OPEN<Y1SC>
8	8A-HKG-037-010		KNOB,SL OPEN T-BLU<YH1LTCC>
8	8A-HKG-031-010		KNOB,SL OPEN T-PNK<YH1PTCC>
9	8A-HR8-211-010		SPR-T,RTRY
10	8A-HR8-201-010		LEVER,ASSY REV
11	8A-HR8-212-010		SPR-E,EJECT
12	8A-HR8-215-010		HLLDR,HP
13	8A-HR8-218-010		BAT-CONTACT,M
14	8A-HR8-217-010		BAT-CONTACT,P
15	8A-HR9-004-010		KEY,CONT<Y1SC>
15	8A-HKG-023-010		KEY,CONT T-WHT<EXCEPT Y1SC>
16	8A-HKG-033-010		LID,BAT T-BLU<YH1LTCC>
16	8A-HKG-027-010		LID,BAT T-PNK<YH1PTCC>
17	8A-HKG-036-010		CAP, CONT RV T-BLU<YH1LTCC>
17	8A-HKG-030-010		CAP, CONT RV T-PNK<YH1PTCC>
17	8A-HKG-003-010		CAP, CONT RV<Y1SC>
18	8A-HKG-068-010		CABI,ASSY GMX70 SIL<Y1SC>
18	8A-HKG-053-010		CABI,REAR PX008 T-BLU<YH1LTCC>
18	8A-HKG-049-010		CABI,REAR PX008 T-PNK<YH1PTCC>
19	8A-HR8-011-010		KNOB,SL<Y1SC>
19	8A-HKG-018-010		KNOB,SL WHT<EXCEPT Y1SC>
20	8A-HKG-002-010		PANEL,REAR<Y1SC>
20	8A-HKG-024-010		PANEL,REAR T-WHT<EXCEPT Y1SC>
21	8A-HKF-004-010		LENS,LED P
22	8A-HR8-004-010		PLATE,HEAD SIL<Y1SC>
22	8A-HKG-046-010		PLATE,HEAD WHT<EXCEPT Y1SC>
23	8A-HR8-209-010		HLLDR,WIRE
A	87-067-535-010		SCREW VT+1.4-3.5
B	87-067-388-010		SCREW

COLOR NAME TABLE

Basic color symbol	Color	Basic color symbol	Color	Basic color symbol	Color
B	Black	C	Cream	D	Orange
G	Green	H	Gray	L	Blue
LT	Transparent Blue	N	Gold	P	Pink
R	Red	S	Silver	ST	Titan Silver
T	Brown	V	Violet	W	White
WT	Transparent White	Y	Yellow	YT	Transparent Yellow
LM	Metallic Blue	LL	Light Blue	GT	Transparent Green
LD	Dark Blue	DT	Transparent Orange	GM	Metallic Green
YM	Metallic Yellow	DM	Metallic Orange	PT	Transparent Pink
LA	Aqua Blue				

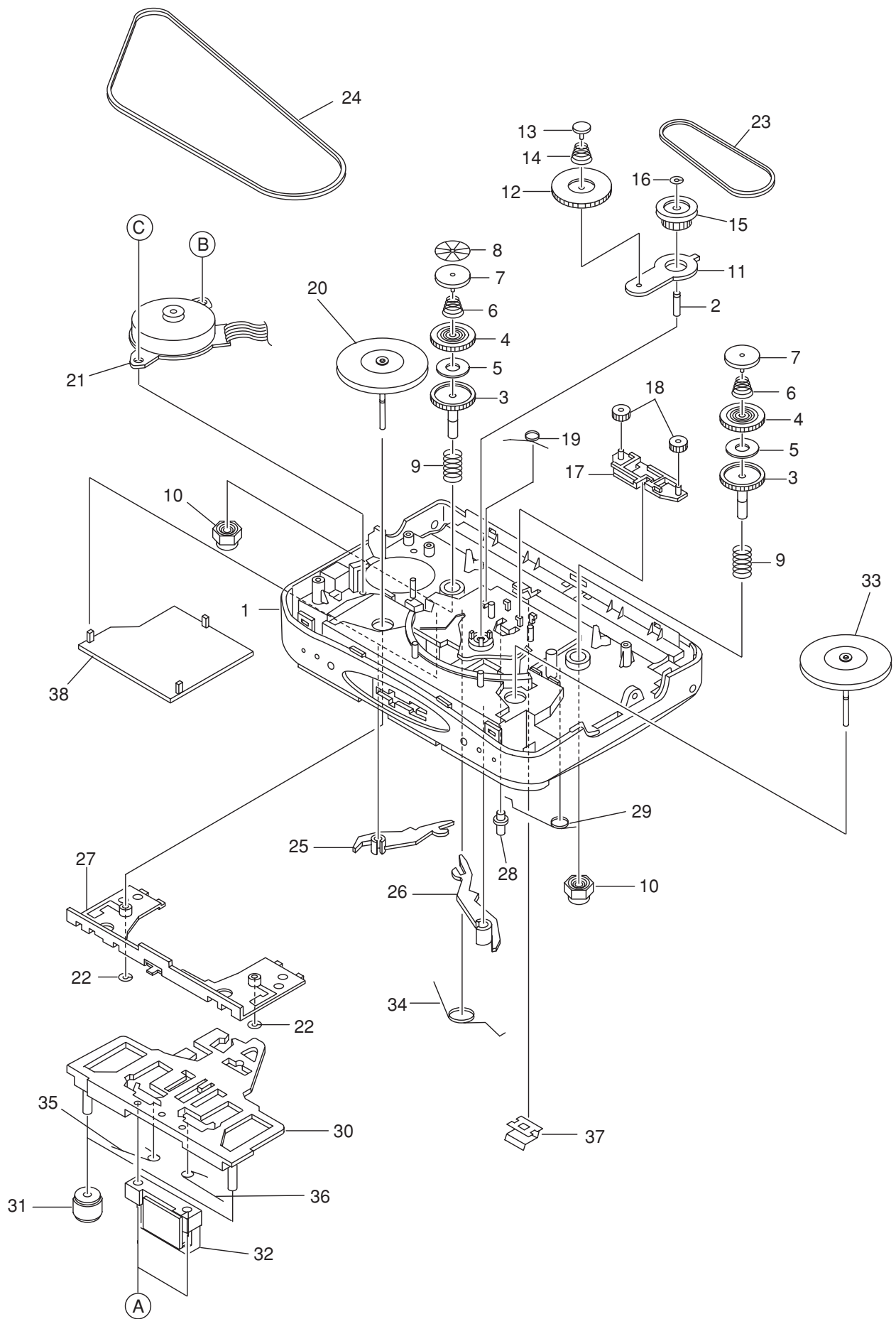
TAPE MECHANISM EXPLODED VIEW 1 / 2
 CL-850-5 SIL <Y>



TAPE MECHANISM PARTS LIST 1 / 2
 CL-850-5 SIL <Y>

REF. NO.	PART NO.	KANRI NO.	DESCRIPTION
1	8A-HR8-003-010		FRAME CENTER
2	S8-505-240-000		GEAR SHAFT
3	S8-505-070-000		REEL GEAR T
4	S8-505-080-000		CLUTCH GEAR
5	S8-505-300-000		FELT
6	S8-505-200-000		CLUTCH SP
7	S8-505-120-000		REEL GEAR BUSH
8	S8-505-290-000		REFLECTING PLATE
9	S8-505-210-000		BRACK TENSION SP
10	S8-000-100-000		REEL CAP
11	S8-505-090-000		FWD GEAR PLATE
12	S8-505-060-000		FWD GEAR
13	S8-505-250-000		GEAR PLATE PIN
14	S8-505-220-000		FWD GEAR SP
15	S8-505-050-000		CENTER GEAR
16	S1-2X2-5X0-25L		L CUT W
17	S8-505-320-000		FF GEAR HOLDER
18	S8-505-330-000		FF GEAR
19	S8-505-310-000		GEAR HOLDER SP
20	S8-550-3K0-000		FLYWHEEL R ASSY
21	87-A91-563-010		MOTOR (IBIGB02)
22	S1-2X2-5X0-1LC		L CUT W
23	SV-500-000-000		SUB BELT
24	SV-190-000-000		MAIN BELT
25	S8-505-100-000		FWD ARM
26	S8-505-110-000		REV ARM
27	S8-505-260-000		SUB CHASSIS
28	S8-505-160-000		REV SELECT
29	S8-505-190-000		SELECT SP
30	S8-505-020-000		HEAD BASE
31	S7-000-080-000		PINCH ROLLER
32	87-A91-019-010		HEAD ASSY (PH8ZM-3)
33	S8-550-4K0-000		FLYWHEEL L ASSY
34	S8-300-160-000		HEAD BASE SP
35	S8-300-170-000		PINCH SP FWD
36	S8-500-090-000		PINCH SP REV
37	8A-HR8-214-010		SPR-P CASS
38	S8-505-130-000		COVER
A	S1-PB1-7X5-500		SCREW 1.7-5.5
B	S3-PY1-7X2-500		SCREW 1.7-2.5
C	S3-PB1-7X3-000		SCREW

TAPE MECHANISM EXPLODED VIEW 2 / 2
 CL-850-5 WHT <YH>



TAPE MECHANISM PARTS LIST 2 / 2
 CL-850-5 WHT <YH>

REF. NO.	PART NO.	KANRI NO.	DESCRIPTION
1	8A-HKG-021-010		FRAME CENTER WHT
2	S8-505-240-000		GEAR SHAFT
3	S8-505-070-000		REEL GEAR T
4	S8-505-080-000		CLUTCH GEAR
5	S8-505-300-000		FELT
6	S8-505-200-000		CLUTCH SP
7	S8-505-120-000		REEL GEAR BUSH
8	S8-505-290-000		REFLECTING PLATE
9	S8-505-210-000		BRACK TENSION SP
10	S8-000-100-000		REEL CAP
11	S8-505-090-000		FWD GEAR PLATE
12	S8-505-060-000		FWD GEAR
13	S8-505-250-000		GEAR PLATE PIN
14	S8-505-220-000		FWD GEAR SP
15	S8-505-050-000		CENTER GEAR
16	S1-2X2-5X0-25L		L CUT W
17	S8-505-320-000		FF GEAR HOLDER
18	S8-505-330-000		FF GEAR
19	S8-505-310-000		GEAR HOLDER SP
20	S8-550-3K0-000		FLYWHEEL R ASSY
21	87-A91-563-010		MOTOR (IBIGB02)
22	S1-2X2-5X0-1LC		L CUT W
23	SV-500-000-000		SUB BELT
24	SV-190-000-000		MAIN BELT
25	S8-505-100-000		FWD ARM
26	S8-505-110-000		REV ARM
27	S8-505-260-000		SUB CHASSIS
28	S8-505-160-000		REV SELECT
29	S8-505-190-000		SELECT SP
30	S8-505-020-000		HEAD BASE
31	S7-000-080-000		PINCH ROLLER
32	87-A91-019-010		HEAD ASSY (PH8ZM-3)
33	S8-550-4K0-000		FLYWHEEL L ASSY
34	S8-300-160-000		HEAD BASE SP
35	S8-300-170-000		PINCH SP FWD
36	S8-500-090-000		PINCH SP REV
37	8A-HR8-214-010		SPR-P CASS
38	S8-505-130-000		COVER
A	S1-PB1-7X5-500		SCREW 1.7-5.5
B	S3-PY1-7X2-500		SCREW 1.7-2.5
C	S3-PB1-7X3-000		SCREW

アイワ株式会社 〒110-8710 東京都台東区池之端1-2-11 ☎03(3827)3111 (代表)
AIWA CO.,LTD. 2-11, IKENOHATA 1-CHOME, TAITO-KU, TOKYO 110, JAPAN TEL:03 (3827) 3111