

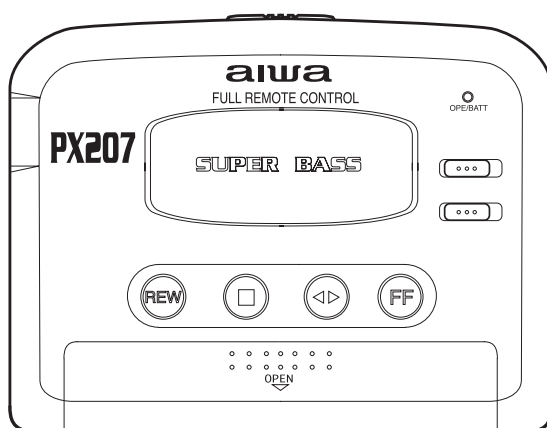


HS-GMX700 Y

HS-GMX800 Y

HS-PX207 Y

HS-PX307 Y



SERVICE MANUAL

STEREO RADIO
CASSETTE PLAYER

BASIC TAPE MECHANISM : CL-850-5 SIL

- This Service Manual is the "Revision Publishing" and replaces "Simple Manual" (S/M Code No. 09-99C-425-6T1)

aiwa


S/M Code No. 09-001-425-6R1

REVISION

DATA

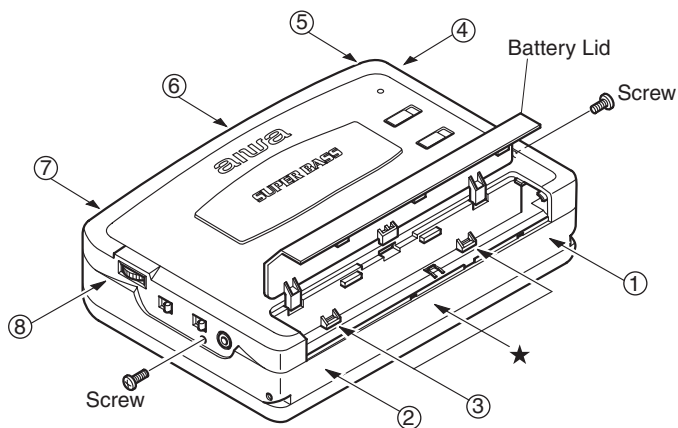
SPECIFICATIONS

Maximum output:	4 mW + 4 mW (EIAJ 16 ohms)
Load impedance:	16 – 32 ohms
Power source:	DC 3V using two R6 (AA) dry cell batteries, AC house current using the optional AC adaptor AC-D302
Battery life	
(EIAJ 1 mW output):	Aprox. 24 hours using two LR6 (AA) alkaline batteries
Maximum outside dimensions:	112.9 (W) x 84 (H) x 29.3 (D) mm (excluding projecting parts and controls) (4 1/2 x 3 3/8 x 1 3/16 in.)
Weight	Approx. 124g (4.3 oz) excluding batteries

- Dolby noise reduction manufactured under license from Dolby Laboratories Licensing Corporation.
“DOLBY” and the double-D symbol  are trademarks of Dolby Laboratories Licensing Corporation.
- Design and specifications are subject to change without notice.

DISASSEMBLY INSTRUCTION

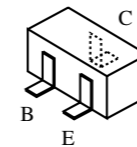
- 1) Remove the 2 screws.
 - 2) Open the battery lid.
 - 3) Release the hooks in the order of ① - ⑧.
- * Releasing hook ③: After releasing hooks ① and ②, push the center frame (with the ★ marks) to release hook ③.



ELECTRICAL MAIN PARTS LIST

REF.NO.	PARTNO.	KANRI NO	DESCRIPTION	REF.NO.	PARTNO.	KANRI NO	DESCRIPTION
IC				C701	87-A10-263-080		C-CAP,U 0.1-16 Z F
	87-002-677-080		C-IC,TA2002F	C702	87-012-141-080		C-CAP,U 0.22-16 Z F
	87-017-805-080		C-IC,AN7375NS(OP AMP)	C703	87-012-141-080		C-CAP,U 0.22-16 Z F<307,800>
	87-A20-532-140		C-IC,LB1977M-TLM	C705	87-A10-263-080		C-CAP,U 0.1-16 Z F
	87-A21-567-040		C-IC,TMP47C443LDM-1B45(EL)	C706	87-010-805-080		CAP, S 1-16<207,700>
	87-A21-566-040		C-IC,S-80820ANNP	C707	87-010-196-080		C-CAP,0.1-25
	87-A21-565-040		C-IC,S-80817ANNP	C708	87-A10-263-080		CAP, U 0.1-16 Z F
				C709	87-A10-263-080		CAP, U 0.1-16 Z F<307,800>
TRANSISTOR				C801	87-A10-489-010		CAP,E 220-4 7L SR
	89-111-625-080		C-TR,2SA1162GR	D601	87-A91-355-040		C-LED,BR1112H-TR-RED
	89-327-125-080		C-TR,2SC2712GR	J101	87-A60-438-010		JACK,3.5 BLK ST W/O SW<207,700>
	89-113-625-080		C-TR,2SA1362GR	J101	87-A60-437-010		JACK,3.5 BLK ST W/O SW4P<307,800>
	87-026-581-080		C-TR,RN2405	J801	87-A61-124-010		JACK,DC DIA2.75 BLK TC
	87-026-267-080		C-TR,RN2407	L101	87-A50-581-080		C-COIL,S FCM2012H 252705
	87-A30-085-040		C-TR,CSA1362GR	L102	87-A50-581-080		C-COIL,S FCM2012H 252705
DIODE				PS501	87-A90-440-010		SNSR,PHOTO GP2S24N2-B
	87-A40-822-040		C-DIODE,CRS01	R103	87-022-279-080		C-RES,U 470-1/16W F
				R104	87-022-279-080		C-RES,U 470-1/16W F
				R105	87-022-217-080		C-RES,U 1.2K-1/16W F
				R106	87-022-217-080		C-RES,U 1.2K-1/16W F
				R107	87-022-221-080		C-RES,U 1.8K-1/16W F
				R108	87-022-221-080		C-RES,U 1.8K-1/16W F
				R109	87-022-292-080		C-RES, U 330K-1/16W F
				R110	87-022-292-080		C-RES, U 330K-1/16W F
				R111	87-022-243-080		C-RES,U 15K-1/16W F
PWB,MAIN C.B				R112	87-022-243-080		C-RES,U 15K-1/16W F
	C101	87-012-275-080	C-CAP,U 1200P-50 B	R133	87-022-247-080		C-RES,U 22K-1/16W F
	C102	87-012-275-080	C-CAP,U 1200P-50 B	R134	87-022-247-080		C-RES,U 22K-1/16W F
	C103	87-012-275-080	C-CAP,U 1200P-50 B	R137	87-022-225-080		C-RES,U 2.7K-1/16W F
	C104	87-012-275-080	C-CAP,U 1200P-50 B	R138	87-022-225-080		C-RES,U 2.7K-1/16W F
	C105	87-016-114-080	C-CAP,U 0.01-25 B	R713	87-022-245-080		C-RES,U 18K-1/16W F
	C106	87-016-114-080	C-CAP,U 0.01-25 B	R714	87-022-245-080		C-RES U 18K-1/16WF<307,800>
	C107	87-010-501-010	CAP,E 47-4V	S101	87-A90-050-010		SW, SL 2-2-2 NS (BLK)
	C108	87-010-501-010	CAP,E 47-4V	S201	87-036-379-180		C-SW,SL1-1-2 SS-350-A12B-C-T
	C111	87-015-688-010	CAP,E 4.7-35 M 7L SRA	S301	87-A90-050-010		SW, SL 2-2-2 NS (BLK)
	C112	87-012-142-080	C-CAP, S 0.33-16	S701	87-A90-665-280		C-SW,TACT LS7A2M
	C113	87-010-805-080	C-CAP, S 1-16	S702	87-A90-665-280		C-SW,TACT LS7A2M
	C114	87-012-141-080	C-CAP,0.22-16 Z F	S703	87-A90-665-280		C-SW,TACT LS7A2M
	C117	87-012-278-080	C-CAP,U 2200P-50 B	S704	87-A90-665-280		C-SW,TACT LS7A2M
	C118	87-012-278-080	C-CAP,U 2200P-50 B	S705	87-036-379-180		C-SW,SL1-1-2 SS350
	C119	87-A10-263-080	C-CAP,U 0.1-16 Z F	S706	87-A91-365-080		C-SW,PUSH 1-1-1 SPVG21
	C120	87-A10-263-080	C-CAP,U 0.1-16 Z F	SFR401	87-A91-653-040		C-SFR,K 33K H RH03AEC
	C121	87-010-502-010	CAP,E 100-4	TH401	87-A91-675-080		C-THMS,NTH5G16P39B472K 07TH
	C122	87-010-503-010	CAP,E 220-4 GAS	VR101	87-A91-650-010		VR,RTRY 50KCX2 H XV0102G
	C123	87-010-502-010	CAP,E 100-4 M K S<307,800>	X701	87-A70-241-010		VIB,CER 4.000MHZ CSTS0400MG03
	C124	87-010-502-010	CAP,E 100-4 M K S<307,800>				
	C125	87-010-501-010	CAP,E 47-4V				
	C201	87-016-461-080	C-CAP,S 0.47-16 Z F				
	C202	87-016-461-080	C-CAP,S 0.47-16 Z F				
	C203	87-A10-263-080	C-CAP,U 0.1-16 Z F				
	C204	87-A10-263-080	C-CAP,U 0.1-16 Z F				
	C205	87-012-282-080	C-CAP, U 4700P-50				
	C206	87-012-282-080	C-CAP, U 4700P-50				
	C207	87-016-369-080	C-CAP,S 0.033-25 B K				
	C208	87-016-369-080	C-CAP,S 0.033-25 B K				
	C209	87-012-282-080	C-CAP, U 4700P-50				
	C210	87-012-282-080	C-CAP, U 4700P-50				
	C211	87-010-805-080	CAP, S 1-16				
	C212	87-010-805-080	CAP, S 1-16				
	C213	87-010-805-080	CAP, S 1-16				
	C214	87-010-805-080	CAP, S 1-16				
	C215	87-A10-263-080	C-CAP,U 0.1-16 Z F				
	C216	87-A10-488-010	CAP,E 47-4 7L SR				
	C303	87-010-196-080	C-CAP,0.1-25				
	C304	87-010-196-080	C-CAP-,0.1-25				
	C401	87-A10-201-080	C-CAP,S 0.33-16 K B				
	C403	87-010-805-080	C-CAP,S 1-16 Z F				
	C404	87-016-526-080	C-CAP,S 0.47-16 K B				
	C405	87-010-992-080	C-CAP,S 0.047-25 B				
	C406	87-A10-263-080	C-CAP,U 0.1-16 Z F				
	C407	87-010-992-080	C-CAP,U 0.047-25 K B MK21				
	C408	87-010-992-080	C-CAP,U 0.047-25 K B MK212				
	C409	87-010-992-080	C-CAP,U 0.047-25 K B MK212				
	C410	87-A10-263-080	C-CAP,U 0.1-16 Z F				

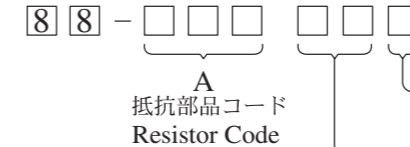
TRANSISTOR ILLUSTRATION



2SA1362
2SA1162
2SC2712
CSA1362
RN2405
RN2407

○チップ抵抗部品コード/CHIP RESISTOR PART CODE

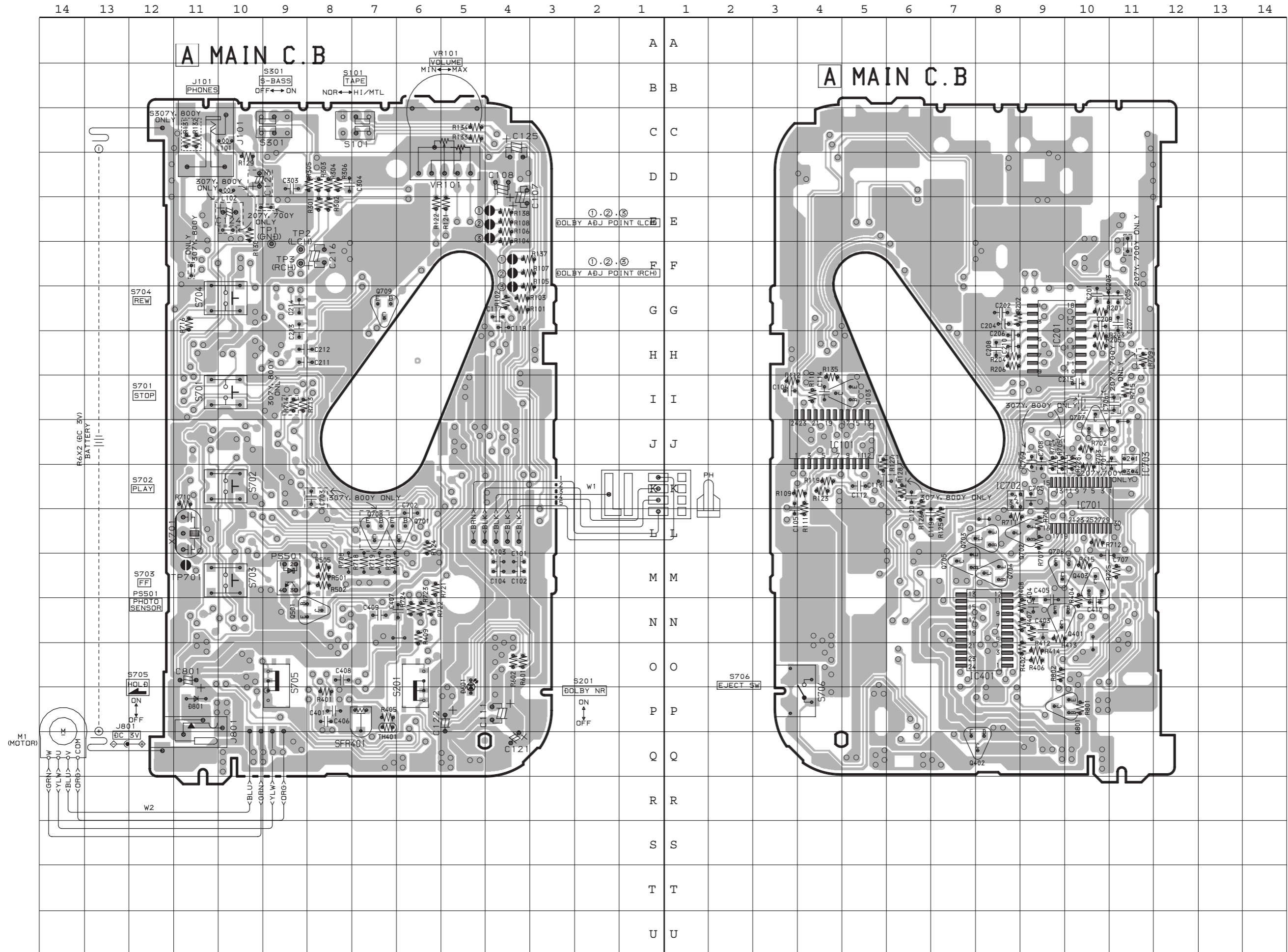
チップ抵抗部品コードの成り立ち
Chip Resistor Part Coding



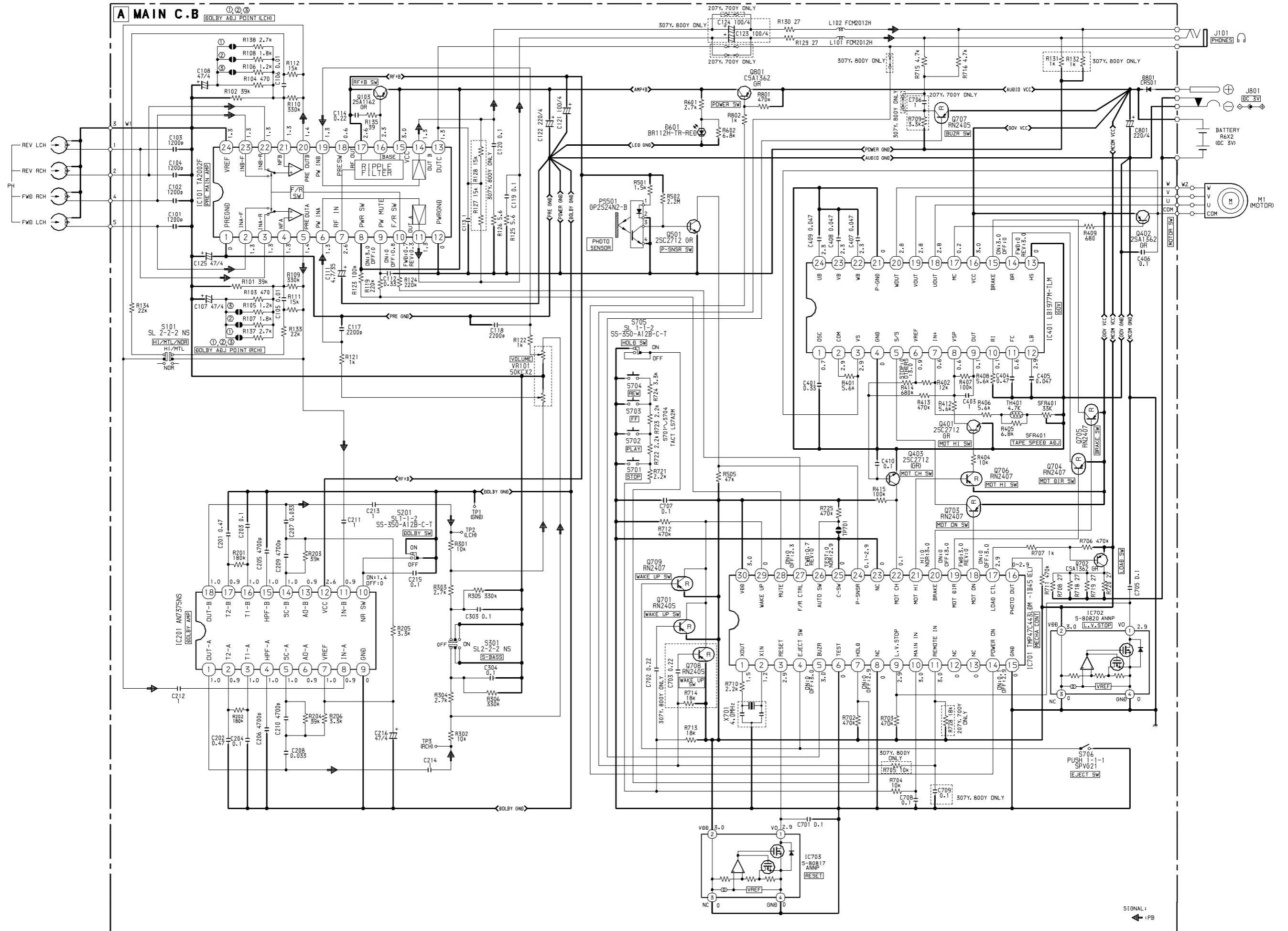
チップ抵抗
Chip resistor

容量 Wattage	種類 Type	許容誤差 Tolerance	記号 Symbol	寸法/Dimensions (mm)			抵抗コード Resistor Code : A	
				外形/Form	L	W		t
1/16W	1005	±5%	CJ		1.0	0.5	0.35	104
1/16W	1608	±5%	CJ		1.6	0.8	0.45	108
1/10W	2125	±5%	CJ		2	1.25	0.45	118
1/8W	3216	±5%	CJ		3.2	1.6	0.55	128

WIRING - 1 (MAIN)

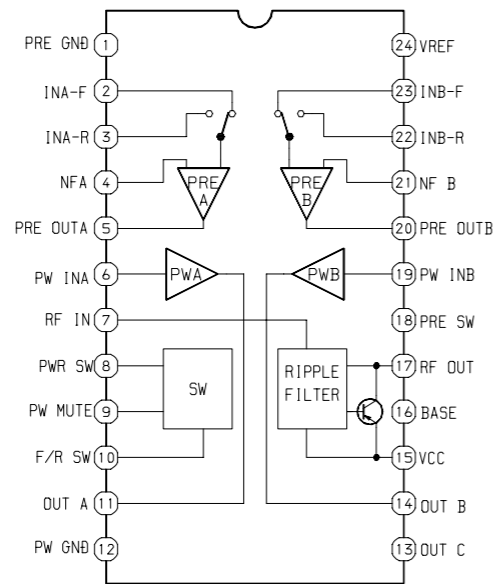


SCHEMATIC DIAGRAM



IC BLOCK DIAGRAM

IC, TA2002FN

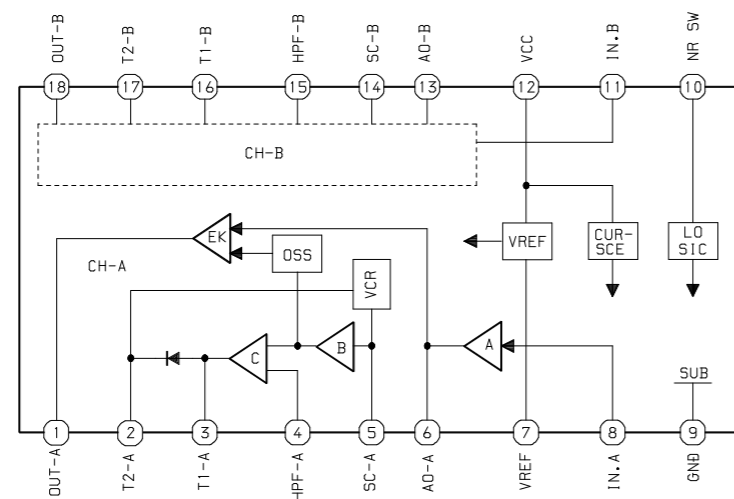


IC DESCRIPTION

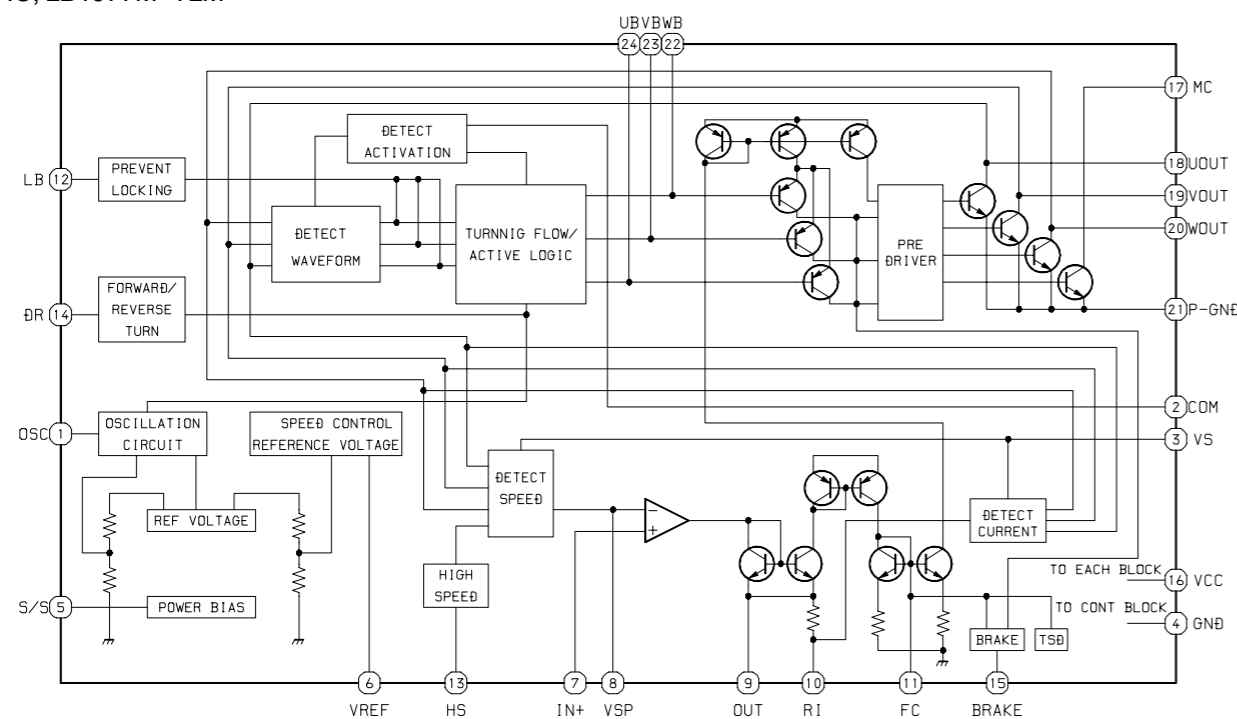
IC, TMP47C443LDM-1B45(EL)

Pin No.	Pin Name	I/O	Description
1	XOUT	O	Connected to 4MHz crystal oscillator.
2	XIN	I	
3	RESET	I	Input reset signal.
4	EJECT SW	I	Input EJECT SW. "H": OFF, "L": ON.
5	BUZR	O	Output buzzer sound.
6	TEST	I	Input test mode. "H": Test ON.
7	HOLD	I	Input HOLD SW. "H": OFF, "L": ON.
8	NC	-	Connected to GND.
9	L.V.STOP	I	Input reducing voltage detection. "L": Mecha STOP.
10	MAIN IN	I	Input key from main unit (A/D).
11	REMOTE IN	I	Input key from remote controller (A/D).
12 ~ 13	NC	O	Not connected.
14	POWER ON	O	Output power for audio circuit. "L": ON.
15	GND	-	Connected to GND.
16	PHOTO OUT	O	Microcomputer detection P-SNSR level output pin.
17	LOAD CTL	O	Output for voltage supply checking. "L": Check.
18	MOT ON	O	Output motor activation. "L": ON.
19	MOT DIR	O	Output motor rotating direction. "L": Counterclockwise.
20	BRAKE	O	Output motor brake. "L": ON.
21	MOT HI	O	Output motor hi-speed activation. "L": ON.
22	MOT CH	I	Input motor activation detection.
23	NC	-	Connected to GND.
24	P-SNSR	I	Input sensor waveform.
25	C-SW	I	Input cassette tape detection. "H": Not exist, "L": Exist.
26	AUTO SW	I	Input AUTO SW. "H": AUTO operation, "L": NO AUTO operation.
27	F/R CTRL	O	Output FWD, REV control. "L": REV.
28	MUTE	O	Output muting. "L": ON.
29	WAKE UP	I	Input micro-computer OSC ON.
30	VDD	-	Power supply (+3V)

IC, AN7375NS

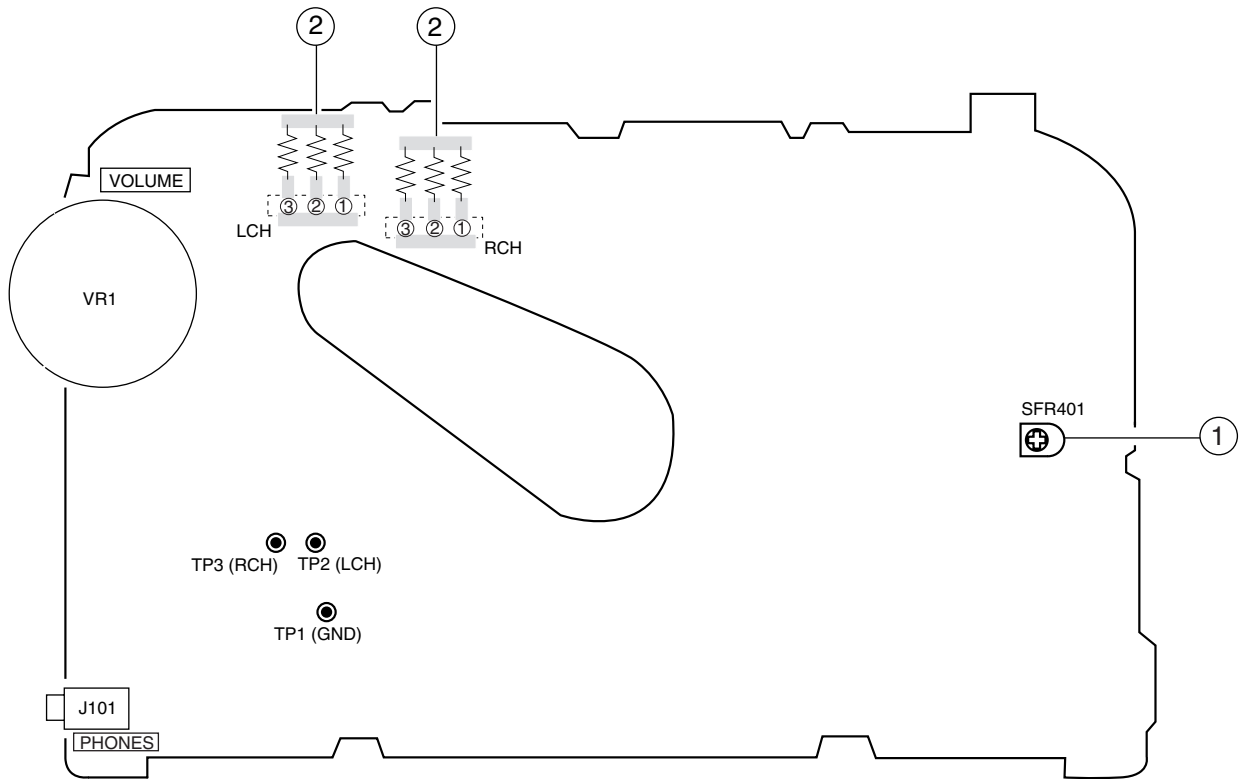


IC, LB1977M-TLM



ADJUSTMENT

A MAIN C.B



<TAPE PLAYER SECTION>

1. Tape Speed Adjustment

- Settings :
- Test tape : TTA – 100 (Tape center)
 - Test point : Phones Jack (J101)
 - Adjustment location : SFR401
 - Dolby SW : OFF
 - Super Bass : OFF
 - Direction : FWD
 - Tape selector : NORM
 - Volume : MAX

Method : Play back the test tape and adjust SFR401 so that the frequency becomes $3015\text{Hz} \pm 10\text{Hz}$. Then confirm WOW is less than 0.55%.

2. Dolby Level Adjustment

- Setting :
- Test tape : TTA – 200
 - Test point : TP1(LCH), TP2(RCH), TP3(GND)
 - Direction : FWD, REV
 - Tape selector : NORM
 - Dolby NR : OFF
 - Volume : MIN
 - Solder points : Dolby adjust point 1, 2, 3

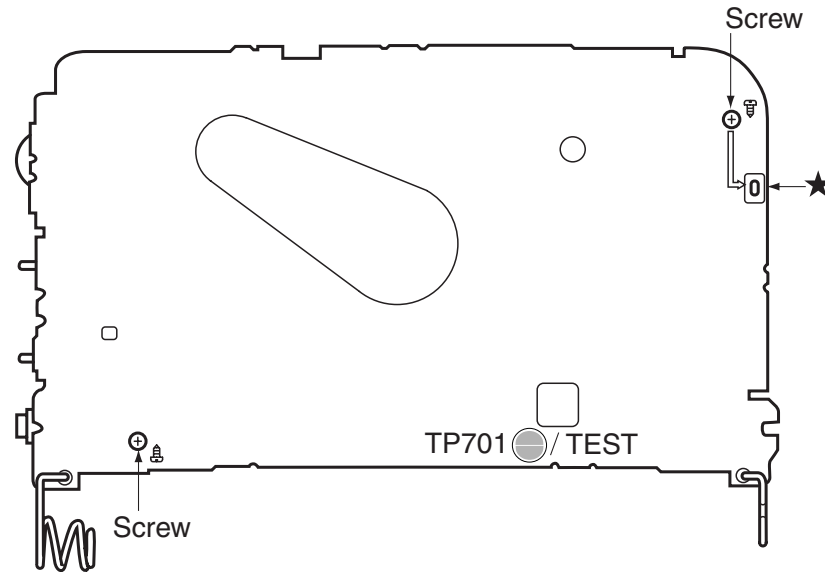
Method : Connect $10\mu\text{F}/16\text{V}$ coupling capacitors between solder points and test equipment (connect the positive terminals to the solder points). Short the Dolby adjust point via solder as shown in the table so the Dolby level becomes $100\text{mV} \pm 1.0\text{dB}$ in both the forward and reverse directions.

Dolby Level Adjust List (For RCH and LCH)

Solder point			Increase level
①	②	③	
Solder	Open	Open	1.4 dB
Open	Solder	Open	2.0 dB
Open	Open	Solder	2.9 dB
Solder	Solder	Open	3.1 dB
Solder	Open	Solder	3.9 dB
Open	Solder	Solder	4.4 dB
Solder	Solder	Solder	5.2 dB

TEST MODE

This model has a test mode function in the disassembled condition.



1. How to use the test mode:

- short the test land in the MAIN C.B.
- auto-stop function is not detected by micro-computer while test mode is active.

Note: Make sure that the test land is opened after the test mode is de-activated.

(Auto-stop function is not available with shorted land condition.)

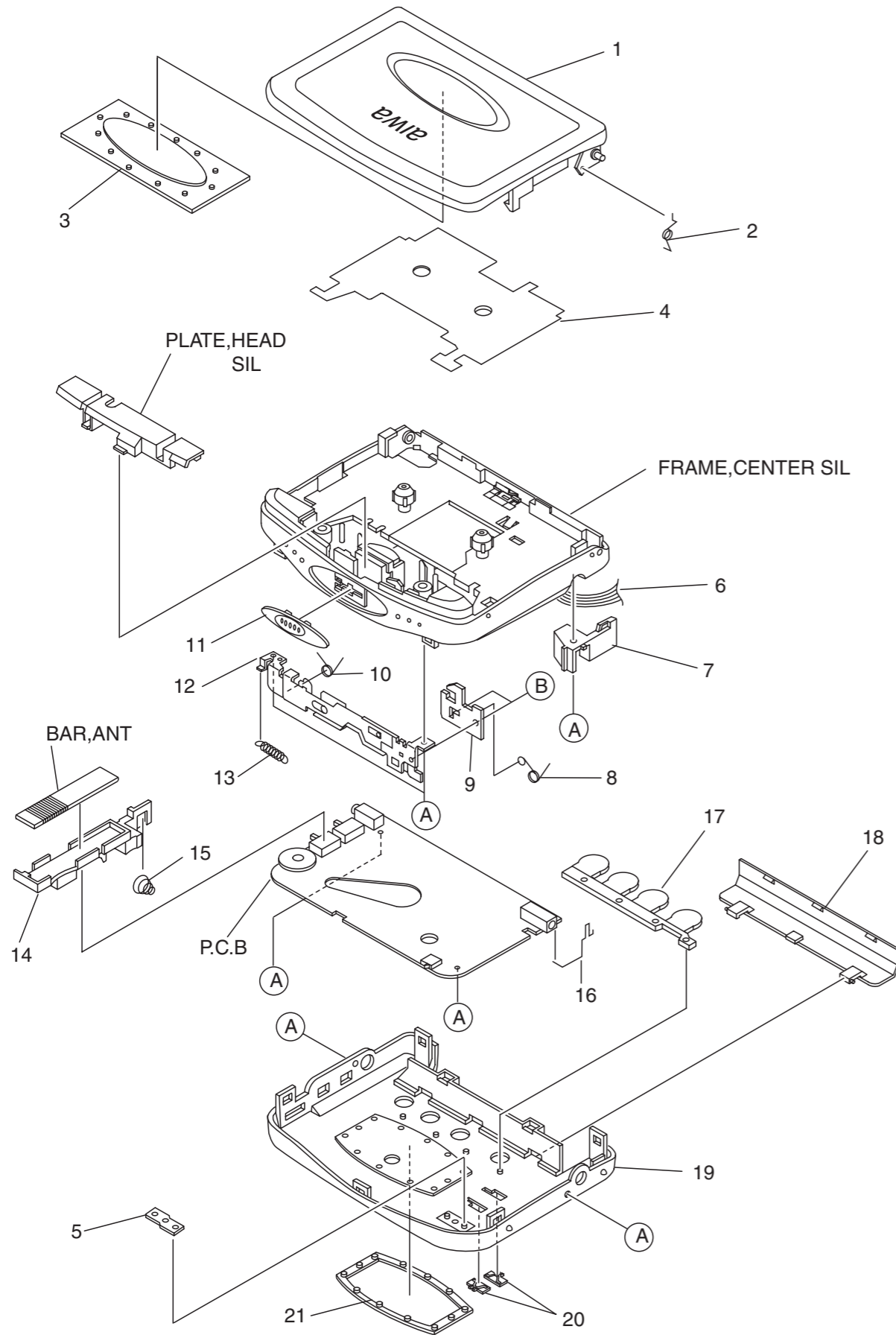
2. How to disassemble the circuit board.

- removes the soldering part in the MAIN C.B (with the ★ mark).
- removes two screws.

MECHANICAL EXPLODED VIEW 1/1

MECHANICAL PARTS LIST 1/1

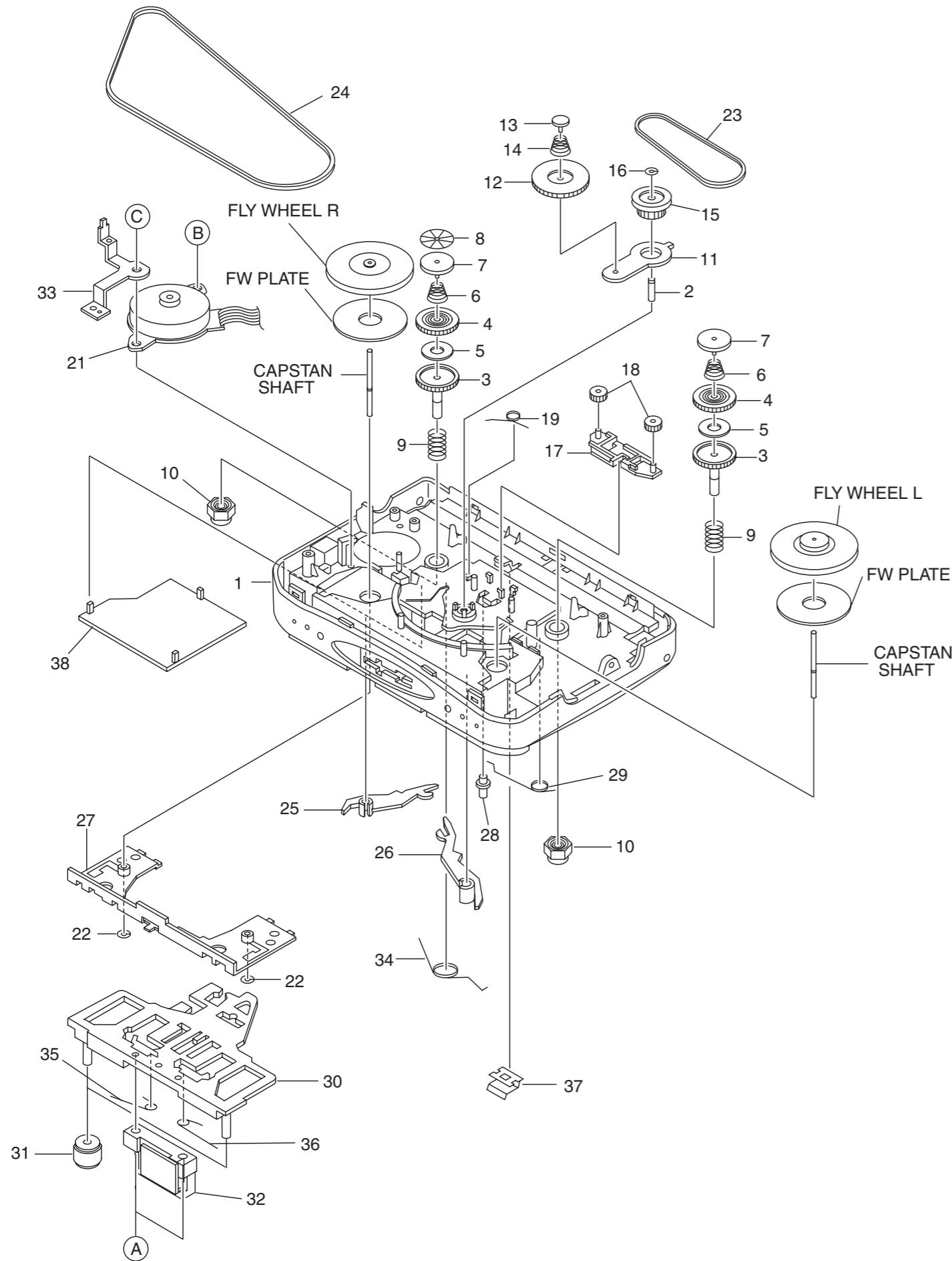
REF.NO.	PARTNO.	KAVR NO	DESCRIPTION	REF.NO.	PARTNO.	KAVR NO	DESCRIPTION
1	8A-HKF-025-010		LID,CASS P BLU EG<307Y1BLMF,800Y1LMF>				
1	8A-HKF-026-010		LID,CASS P GRN EG<800Y1GMF,307Y1BGMF>				
1	8A-HKF-018-010		LID,CASS P SIL EG<207Y1SF,307Y1BSF,800Y1SF,700Y1SF,307Y1SF>				
2	8A-HR8-213-010		SPR-T,CASS				
3	8A-HR8-002-010		WINDOW,CASS				
4	8A-HKF-005-010		PLATE,GMX700<700Y1SF>				
4	8A-HKF-006-010		PLATE,GMX800<800Y1SF,800Y1LMF,800Y1GMF>				
5	8A-HKF-004-010		LENS,LED P				
6	8A-HR8-603-010		RBN-CORD,4P MOTOR				
7	8A-HR8-216-010		HLDR,DC				
8	8A-HR8-210-010		SPR-T,LOCK				
9	8A-HR8-208-010		PLATE,LOCK				
10	8A-HR8-211-010		SPR-T,RTRY				
11	8A-HR8-005-010		KNOB,SL OPEN				
12	8A-HR8-201-010		LEVER,ASSY REV				
13	8A-HR8-212-010		SPR-E,EJECT				
14	8A-HR8-215-010		HLDR,HP				
15	8A-HR8-218-010		BAT-CONTACT,M				
16	8A-HR8-217-010		BAT-CONTACT,P				
17	8A-HR8-009-010		KEY,CONT				
18	8A-HKF-020-010		LID,BAT BLU<307Y1BLMF,800Y1LMF>				
18	8A-HKF-023-010		LID,BAT GRN<800Y1GMF,307Y1BGMF>				
18	8A-HR8-008-010		LID,BAT SIL<207Y1SF,307Y1BSF,800Y1SF,700Y1SF,307Y1SF>				
19	8A-HKF-007-010		CABI,REAR 207 SIL EG<207Y1SF>				
19	8A-HKF-009-010		CABI,REAR 307 SIL EG<307Y1BSF,307Y1SF>				
19	8A-HKF-019-010		CABI,REAR 307 BLUE EG<307Y1BLMF>				
19	8A-HKF-022-010		CABI,REAR 307 GRN EG<307Y1BGMF>				
19	8A-HKF-010-010		CABI,REAR GMX700 SIL<700Y1SF>				
19	8A-HKF-027-010		CABI,REAR GMX800 BLU<800Y1LMF>				
19	8A-HKF-028-010		CABI,REAR GMX800 GRN<800Y1GMF>				
19	8A-HKF-011-010		CABI,REAR GMX800 SIL<800Y1SF>				
20	8A-HR8-011-010		KNOB,SL<207Y1SF,307Y1BSF,800Y1SF,700Y1SF,307Y1SF>				
20	8A-HKF-021-010		KNOB,SL BLU<307Y1BLMF,800Y1LMF>				
20	8A-HKF-024-010		KNOB,SL GRN<800Y1GMF,307Y1BGMF>				
21	8A-HKF-003-010		PANEL,REAR				
A	87-067-535-010		SCREW VT+1.4-3.5				
B	87-067-388-010		SCREW				



COLOR NAME TABLE

Basic color symbol	Color	Basic color symbol	Color	Basic color symbol	Color
B	Black	C	Cream	D	Orange
G	Green	H	Gray	L	Blue
LT	Transparent Blue	N	Gold	P	Pink
R	Red	S	Silver	ST	Titan Silver
T	Brown	V	Violet	W	White
WT	Transparent White	Y	Yellow	YT	Transparent Yellow
LM	Metallic Blue	LL	Light Blue	GT	Transparent Green
LD	Dark Blue	DT	Transparent Orange	GM	Metallic Green
YM	Metallic Yellow	DM	Metallic Orange		

TAPE MECHANISM EXPLODED VIEW 1 / 1



TAPE MECHANISM PARTS LIST 1/1

REF.NO.	PARTNO.	KANRI NO.	DESCRIPTION	REF.NO.	PARTNO.	KANRI NO.	DESCRIPTION
1	S8-HR8-003-010		FRAME CENTER	27	S8-505-260-000		SUB CHASSIS
2	S8-505-240-000		GEAR SHAFT	28	S8-505-160-000		REV SELECT
3	S8-505-070-000		REEL GEAR T	29	S8-505-190-000		SELECT SP
4	S8-505-080-000		CLUTCH GEAR	30	S8-505-020-000		HEAD BASE
5	S8-505-300-000		FELT	31	S7-000-080-000		PINCH ROLLER
6	S8-505-200-000		CLUTCH SP	32	S8-7A9-119-100		HEAD ASSY (PH8ZM-3)
7	S8-505-120-000		REEL GEAR BUSH	33	8A-HR8-219-010		PLATE EARTH MOT
8	S8-505-290-000		REFLECTING PLATE	34	S8-300-160-000		HEAD BASE SP
9	S8-505-210-000		BRACK TENSION SP	35	S8-300-170-000		PINCH SP FWD
10	S8-000-100-000		REEL CAP	36	S8-500-090-000		PINCH SP REV
11	S8-505-090-000		FWD GEAR PLATE	37	8A-HR8-214-010		SPR-P CASS
12	S8-505-060-000		FWD GEAR	38	S8-505-130-000		COVER
13	S8-505-250-000		GEAR PLATE PIN	A	S1-PB1-7X5-500		SCREW 1.7-5.5
14	S8-505-220-000		FWD GEAR SP	B	S3-PY1-7X2-500		SCREW 1.7-2.5
15	S8-505-050-000		CENTER GEAR	C	S3-PB1-7X3-000		SCREW
16	S1-2X2-5X0-25L		L CUT W				
17	S8-505-320-000		FF GEAR HOLDER				
18	S8-505-330-000		FF GEAR				
19	S8-505-310-000		GEAR HOLDER SP				
21	S8-7A9-156-310		MOTOR (IBIGB02)				
22	S1-2X2-5X0-11C		L CUT W				
23	SV-500-000-000		SUB BELT				
24	SV-190-000-000		MAIN BELT				
25	S8-505-100-000		FWD ARM				
26	S8-505-110-000		REV ARM				

ACCESSORIES / PACKAGE LIST

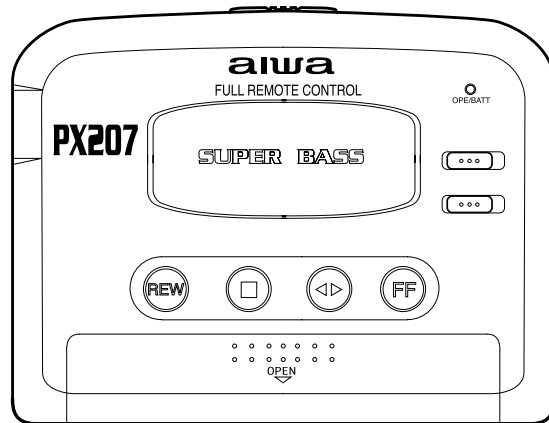
REF.NO.	PARTNO.	KANRI NO.	DESCRIPTION
1	8A-HKF-905-010	IB, Y (EGFSI) F 307<307Y, 800Y>	
1	8A-HKF-906-010	IB, Y (EDCPH) F 307<307Y, 800Y>	
1	8A-HKF-915-010	IB, Y (EGFSI) F 207<207Y, 700Y>	
1	8A-HKF-916-010	IB, Y (EDCPH) F 207<207Y, 700Y>	
2	87-B30-255-010	HEADPHONE, HP-M007B(S) <207Y, 700Y>	
2	87-B30-336-010	HEADPHONE, HP-M041(S) <307Y, 800Y>	
3	8A-HKF-951-010	RC UNIT, RC307<307Y, 800Y>	



アイワ株式会社 〒110-8710 東京都台東区池之端1-2-11 ☎03(3827)3111 (代表)
AIWA CO.,LTD. 2-11, IKENOHATA 1-CHOME, TAITO-KU, TOKYO 110, JAPAN TEL:03 (3827) 3111



HS-GMX700 Y
HS-GMX800 Y
HS-PX207 Y
HS-PX307 Y



SERVICE MANUAL

STEREO RADIO
CASSETTE PLAYER

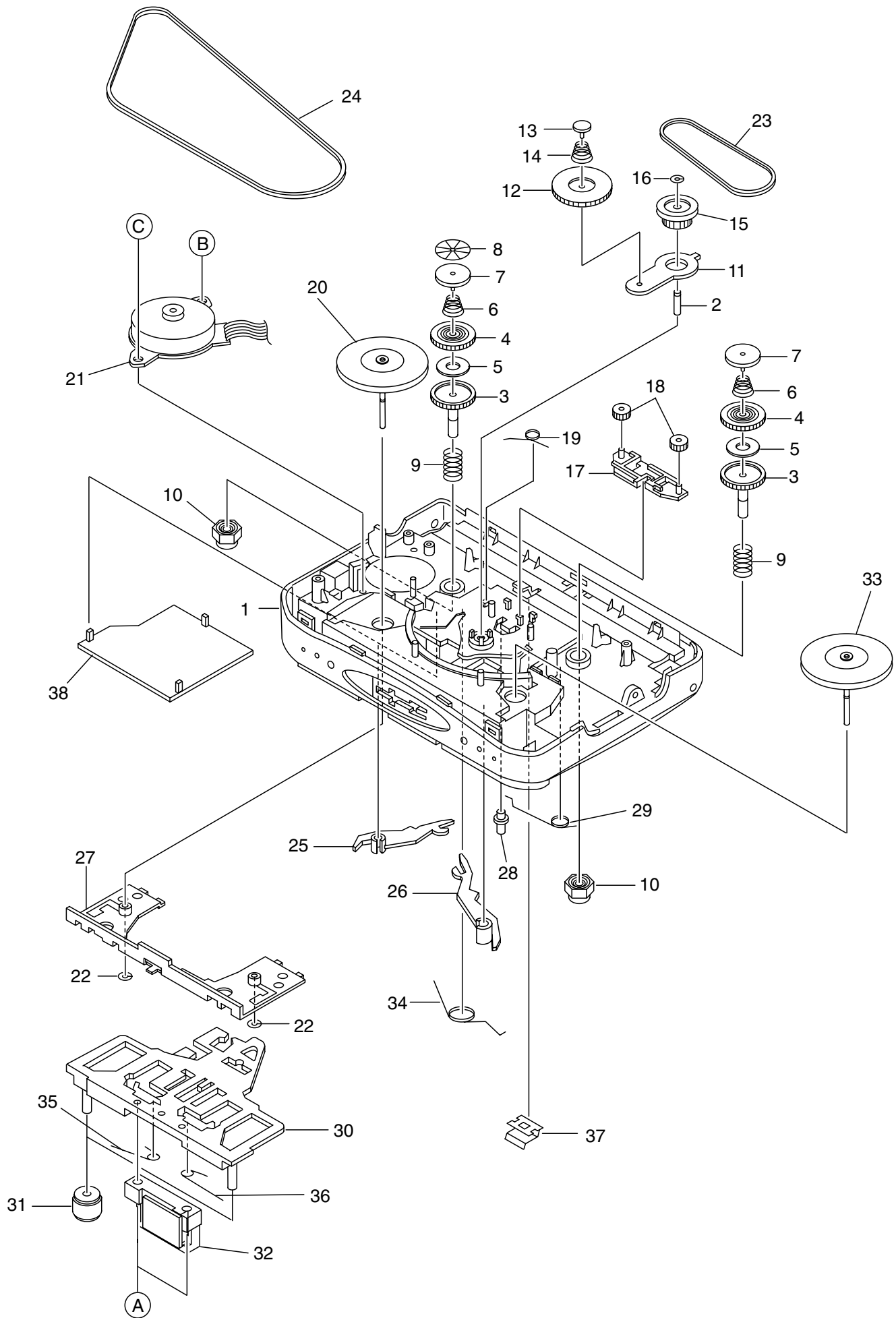
BASIC TAPE MECHANISM : CL-850-5 SIL

- This Correction Service Manual is issued because of some errors in Service Manual of Model Name HS-GMX700/800 (Y) / PX207/307 (Y), (S/M Code No. 09-001-425-6R1)

aiwa
S/M Code No. 09-003-425-6C1

CORRECTION
DATA

TAPE MECHANISM PARTS LIST 1 / 1



TAPE MECHANISM PARTS LIST 1 / 1

REF.NO.	PARTNO.	KANRI NO.	DESCRIPTION	REF.NO.	PARTNO.	KANRI NO.	DESCRIPTION
1	8A-HR8-003-010		FRAME CENTER	26	S8-505-110-000		REV ARM
2	S8-505-240-000		GEAR SHAFT	27	S8-505-260-000		SUB CHASSIS
3	S8-505-070-000		REEL GEAR T	28	S8-505-160-000		REV SELECT
4	S8-505-080-000		CLUTCH GEAR	29	S8-505-190-000		SELECT SP
5	S8-505-300-000		FELT	30	S8-505-020-000		HEAD BASE
6	S8-505-200-000		CLUTCH SP	31	S7-000-080-000		PINCH ROLLER
7	S8-505-120-000		REEL GEAR BUSH	32	87-A91-019-010		HEAD ASSY (PH8ZM-3)
8	S8-505-290-000		REFLECTING PLATE	33	S8-550-4K0-000		FLYWHEEL L ASSY
9	S8-505-210-000		BRACK TENSION SP	34	S8-300-160-000		HEAD BASE SP
10	S8-000-100-000		REEL CAP	35	S8-300-170-000		PINCH SP FWD
11	S8-505-090-000		FWD GEAR PLATE	36	S8-500-090-000		PINCH SP REV
12	S8-505-060-000		FWD GEAR	37	8A-HR8-214-010		SPR-P CASS
13	S8-505-250-000		GEAR PLATE PIN	38	S8-505-130-000		COVER
14	S8-505-220-000		FWD GEAR SP	A	S1-PB1-7X5-500		SCREW 1.7-5.5
15	S8-505-050-000		CENTER GEAR	B	S3-PY1-7X2-500		SCREW 1.7-2.5
16	S1-2X2-5X0-25L		L CUT W	C	S3-PB1-7X3-000		SCREW
17	S8-505-320-000		FF GEAR HOLDER				
18	S8-505-330-000		FF GEAR				
19	S8-505-310-000		GEAR HOLDER SP				
20	S8-550-3K0-000		FLYWHEEL R ASSY				
21	87-A91-563-010		MOTOR (IBIGB02)				
22	S1-2X2-5X0-11C		L CUT W				
23	SV-500-000-000		SUB BELT				
24	SV-190-000-000		MAIN BELT				
25	S8-505-100-000		FWD ARM				

アイワ株式会社 〒110-8710 東京都台東区池之端1-2-11 ☎03(3827)3111 (代表)
AIWA CO.,LTD. 2-11, IKENOHATA 1-CHOME, TAITO-KU, TOKYO 110, JAPAN TEL:03 (3827) 3111