

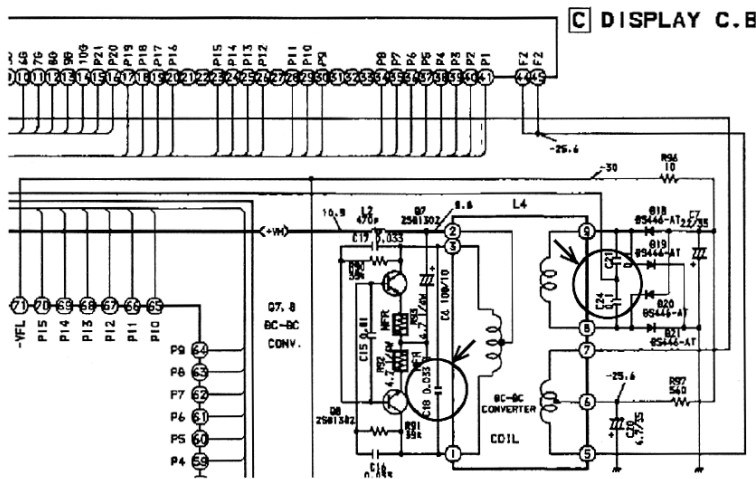
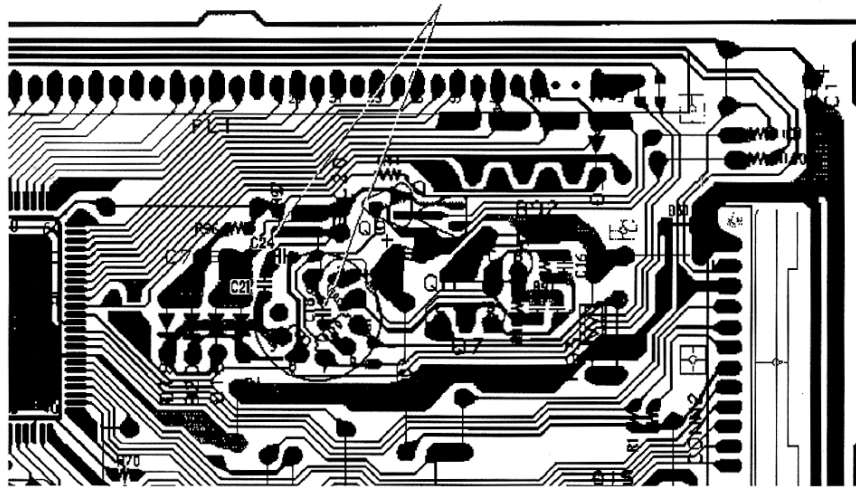
## SERVICE TECHNICAL INFORMATION

### ONE POINT REPAIR

UTSUNOMIYA, November 30, 1994  
 REF. NO. : SI-94-030  
 CUSTOMER SERVICE H.Q.

MODEL : LCX-50/65  
 SUBJECT : No display  
 SYMPTOM : If the unit is operating and power is turned off for a very short period (less than 1 minute) due to a blackout, etc., the display may not appear after the power recovers. In such cases, take the following measures.

REMEDY : Change the front board chip condenser.  
 Ref. No. C18 C-CAP 0.033 $\mu$ F → C-CAP 0.022 $\mu$ F BK  
 C21, 24 C-CAP 0.1 $\mu$ F → CAP M 0.1 $\mu$ F



Ref.	Part Name	Part Number
C18	C-CAP, S 0.022-25B	87-010-198-089
C21, 24	CAP, M 0.1-50J	88-700-910-819