

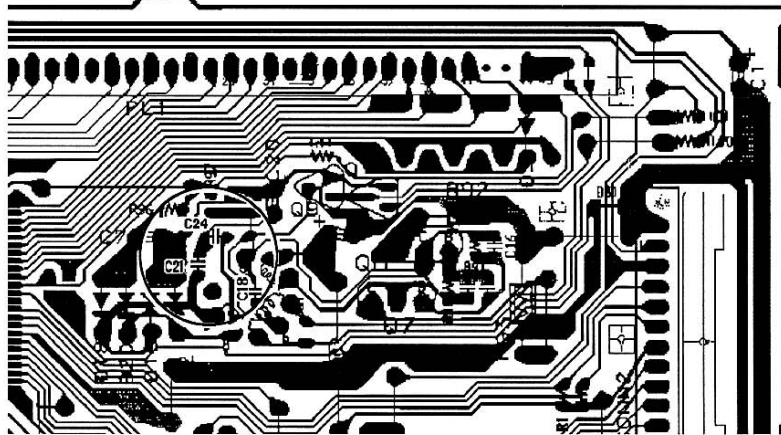
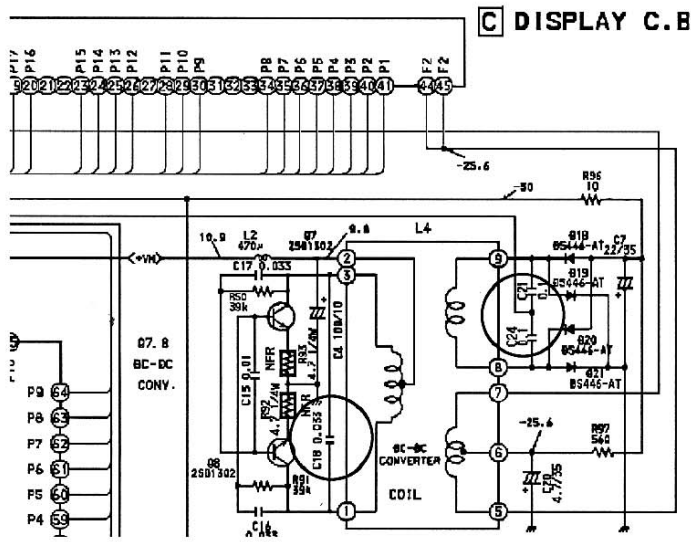
SERVICE TECHNICAL INFORMATION

ONE POINT REPAIR

UTSUNOMIYA, 5th. JUNE 1995

REF.NO. : S1-95-015
CUSTOMER RELATION & SERVICE DIV.

- MODELS : LCX-50, LCX-AP1
 SUBJECT : Does not display
 SYMPTOM : In the LCX-50, there are cases in which the display stops functioning. If such symptoms are indicated by the customer, perform the following remedy. (Please disregard Service Technical News G-94-40.)
 REMEDY : Change the chip condenser of the front P.C.B.
 (1) Ref. No. C18 C-CAP 0.033 μF -> C-CAP 0.022 μF BK (capacity change)
 (2) Ref. No. C21, 24 CAP M 0.1 μF -> C-CAP 0.1 μF (change from mylar to a chip material)



- NOTES
- Applicable production lot: 11/94 ~ 2/95 (Mylar condensers C21 and 24 are soldered on the rear side of the P.C.B.)
 - Perform only remedy (1) for models produced before 11/94.
 - For boards with sever burns around the DC-DC converter, replace the front P.C.B.

Ref.	部品名	部品番号
C18	T-CAP 0.022 μF	87-010-198-089
C21, 24	T-CAP 0.1 μF	87-010-196-089
-	DISPLAY CB	SV-T00-012-010

3-CD Changer Technical Information Publications

CS PROMOTION DIV

T/N No.	3-CD Mechanism	Subject (Explanation)	Relevant Production Lots
SI-94-047	1ZG-1	Simple Method for Phase Alignment of Gear, Tray Cam A simple method for aligning gear phase of 1ZG-1. *Symptoms such as the tray not opening/not closing and no chucking occur when there is gear slippage.	- - -
SI-95-006	1ZG-1/4ZG-1	Sound Interruption when Using a Special Disc A method to improve playability when a special disc is played and there is poor reading (sound interruption, noise, etc.) of the disc.	- - -
SI-95-004	1ZG-1/4ZG-1	Microcomputer Compatibility (Note) microcomputer compatibility table.	- - -
SI-94-040	4ZG-1	Gear · Main Cam Phase Alignment Method A 4ZG-1 gear alignment method and a 3-CD mechanism (1ZG-1/4ZG-1) confirmation method from the top window. * When there is gear slippage, symptoms are similar to those of 1ZG-1.	- - -
SI-94-042 Revise	4ZG-1 4ZG-1T	Turn Table Stop Position Slippage (4ZG-1.T) Revised Edition This is a countermeasure for; a) the slippage of the turn table stop position causes no chucking b) the chucking and play back function is normal dnt at the eject operation/ disc is gotten out of the normal position	94.12~
SI-94-053	4ZG-1	Countermeasure for Phase Shift of Gear, Main Cam (Adding a G-cushion) A countermeasure to prevent gear phase shift in the 4ZG-1 mechanism.	95.2~
SI-95-003	4ZG-1/4ZG-1T	Pick-up Change for a Limited Time (KSS-210A → 480A) Information about the limited change of the 4ZG-1/4ZG-1T built-in pick-up. A method for using KSS-210A when repairing models with built-in KSS-480A.	95.1~ 95.6

[Remarks]

Presently, there are 3 general 3-CD changer types: 1ZG-1, 4ZG-1, and 4ZG-1T.

1ZG-1 performs CD chucking by rotation of the Mecha · Cam Gear. In comparison, 4ZG-1 and 4ZG-1T perform chucking by moving the Slide Mecha · Cam to the left. Also, 4ZG-1 and 4ZG-1T have different 3-CD board

configurations and use different ICs. Be aware that these 3-CD changers are not compatible.