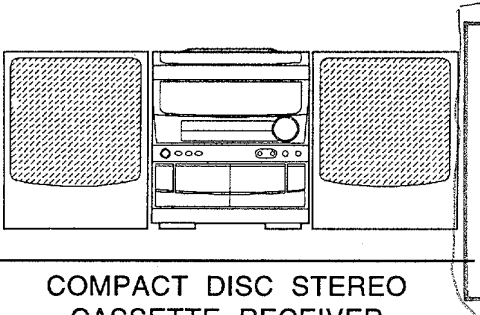


aiwa



NSX-AV88



COMPACT DISC STEREO
CASSETTE RECEIVER

- BASIC TAPE MECHANISM : 2ZM-3MK2 PR4NM
- BASIC CD MECHANISM : 4ZG-1 ADN
- TYPE : LH

SUPPLEMENT

CD - CASSEIVER	SPEAKER	REMOTE CONTROLLER
CX-NAV88 (TYPE : LH)	SX-NAV88 SX-CR423	RC - T506

- This Service Manual contains information about the difference between NSX-AV88(LH) and NSX-AV80(LH). If requiring the other information, see Service Manual of NSX-AV800(U)/AV80(HE,LH), (S/M Code No. 09-964-134-5FE).
- If requiring information about the CD mechanism, see Service Manual of 4ZG-1, (S/M Code No. 09-965-128-10T).

SPECIFICATIONS

<FM Tuner section>

Tuning range 87.5MHz to 108MHz
Usable sensitivity (IHF) 13.2dBf
Antenna terminals 75 ohms (unbalanced)

<AM (MW) Tuner section>

Tuning range 531kHz to 1602kHz (9kHz step)
 530kHz to 1710kHz (10kHz step)
Usable sensitivity 350µV/m
Antenna Loop antenna

<Amplifier section>

Power output **Front**
 100W + 100W
 (6 ohms, T.H.D. 10%, 1kHz)
Rear (Surround)
 10W + 10W
 (16 ohms, T.H.D 10%, 1kHz)
Center
 20W
 (8 ohms, T.H.D 10%, 1kHz)
Total harmonic distortion 0.1% (50W, 1kHz, 6 ohms, DIN AUDIO/Front)
Inputs VIDEO/AUX : 250mV (adjustable)
 MIC 1, MIC 2 : 1mV (10kohms)
Outputs SUPER WOOFER : 2.45 V
 SPEAKERS: accept speakers of 6 ohms or more
 SURROUND SPEAKERS : accept speakers of 16 ohms or more
 CENTER SPEAKERS : accept speakers of 8 ohms or more
 PHONES (stereo jack) : accepts headphones of 32 ohms or more

<Cassette deck section>

Track format 4 tracks, 2 channels stereo
Frequency response CrO₂ tape : 50Hz – 16000Hz
 Normal tape : 50Hz – 15000Hz
Signal-to-noise ratio 60 dB (Dolby B NR ON, CrO₂ tape peak level)
Recording system AC bias
Heads Deck 1 : Playback head x1
 Deck 2 : Recording/playback/erase head x 1

<Compact disc player section>


Laser Semiconductor laser (λ =780 nm)
D-A converter 1 bit dual
Signal-to-noise ratio 83dB (1kHz, 0dB)
Harmonic distortion 0.05% (1kHz, 0dB)
Wow and flutter Unmeasurable

<Speaker system SX-NAV88>

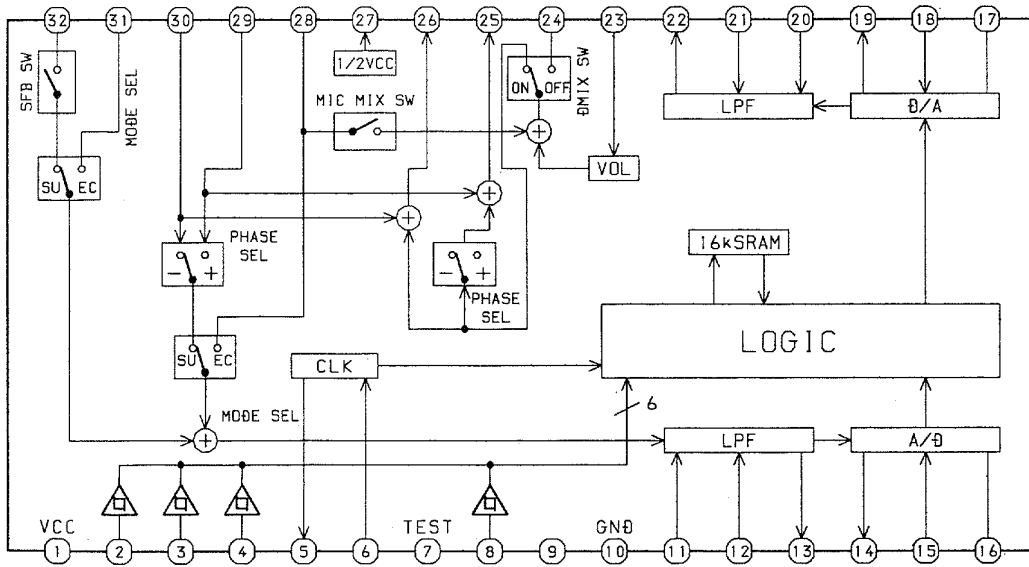
Cabinet type 3 way, bass reflex (magnetic shielded type)
Speakers Woofer : 140mm cone type
 Tweeter : 60mm cone type
 Super tweeter : 20mm ceramic type
Impedance 6 ohms
Output sound pressure level 87dB/W/m
Dimensions (W x H x D) 235 x 302 x 250 mm
Weight 3.3kg

<General>

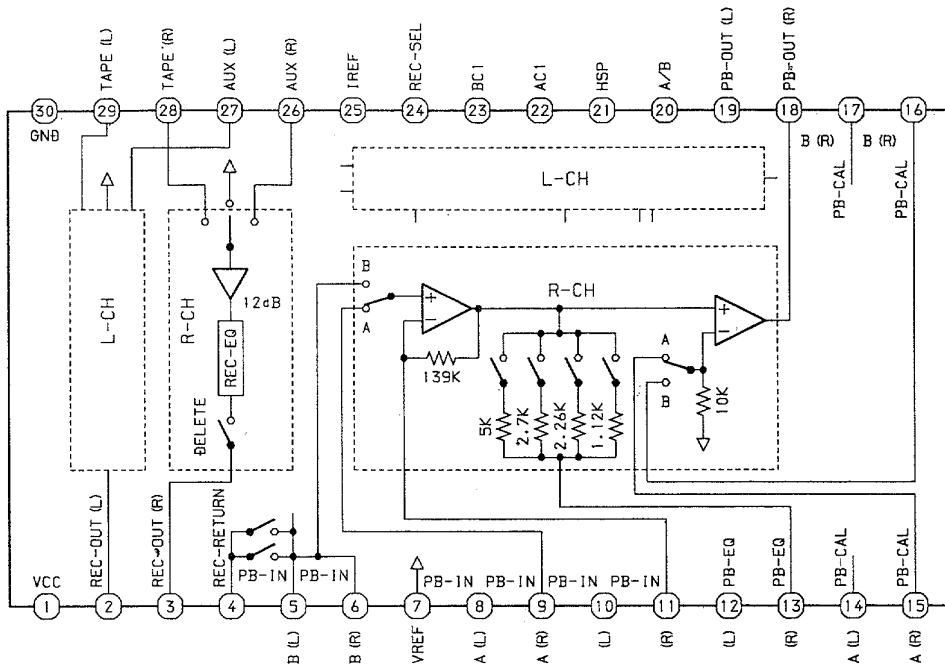
Power requirements 120V / 220 – 230V / 240V AC, switchable 50/60 Hz
Power consumption 150W
Dimensions of main unit (W x H x D) 260 x 307 x 349 mm
Weight of main unit 8.6kg

- Design and specifications are subject to change without notice.
- The word "BBE" and the "BBE symbol" are trademarks of BBE Sound, Inc.
 Under license from BBE Sound, Inc.
- Manufactured under license from Dolby Laboratories Licensing Corporation.
 "DOLBY", the double-D symbol  and "PRO LOGIC" are trademarks of Dolby Laboratories Licensing Corporation.

IC BLOCK DIAGRAM
IC,M65849FP



IC,HA12211NT

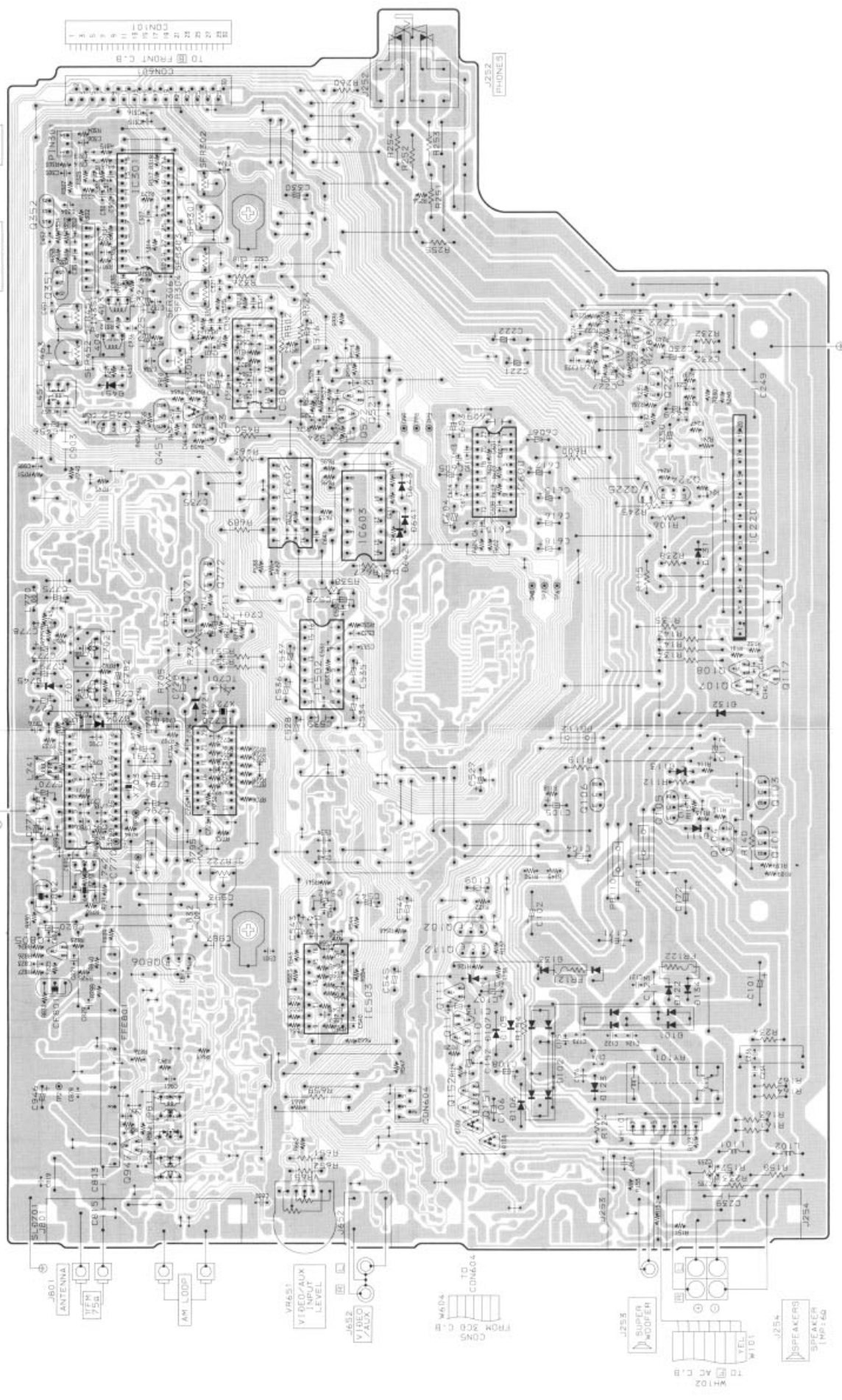


1 2 3 4 5 6 7 8 9 10 11 12 13 14

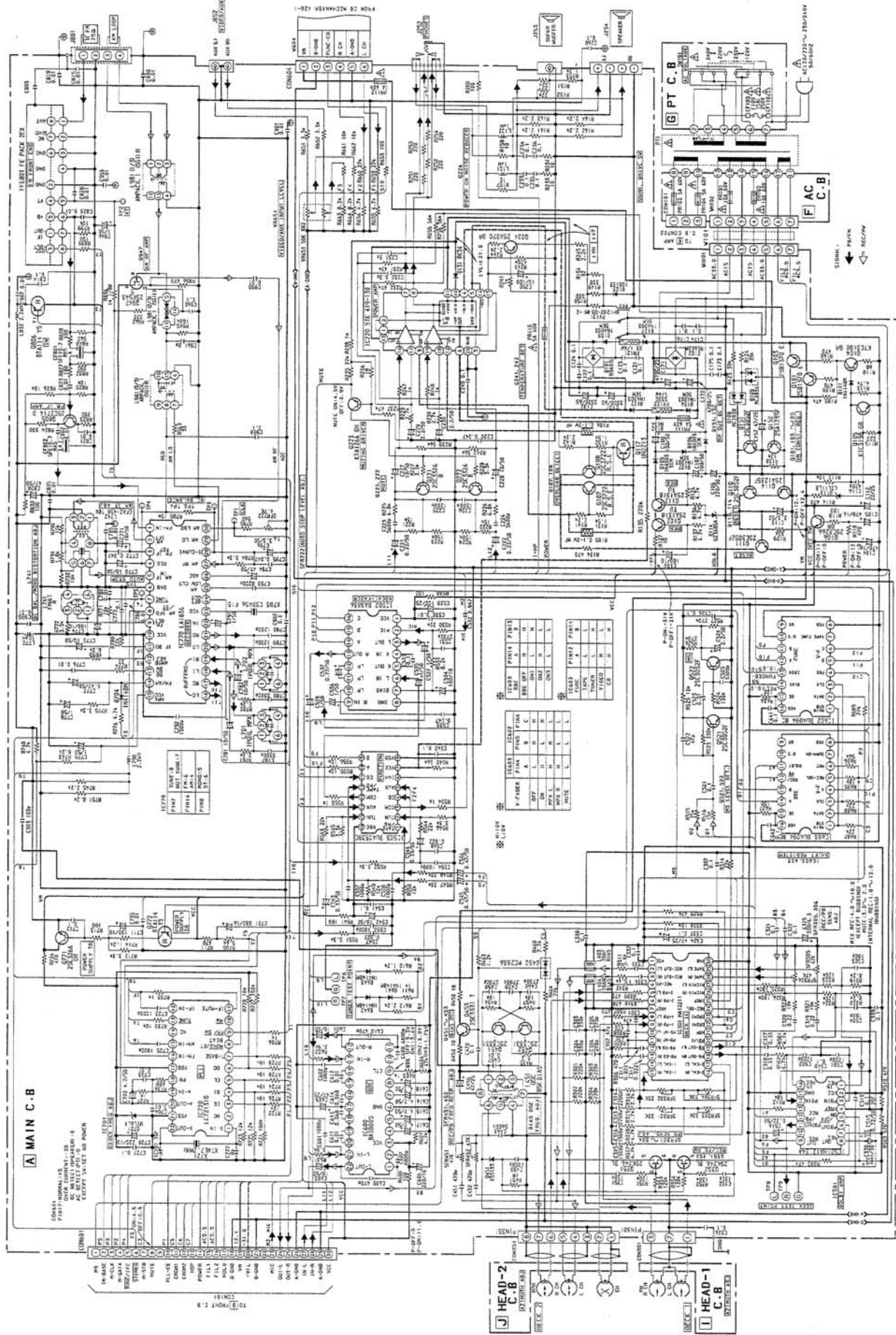
A B C D E F G H I J

A MAIN C.B

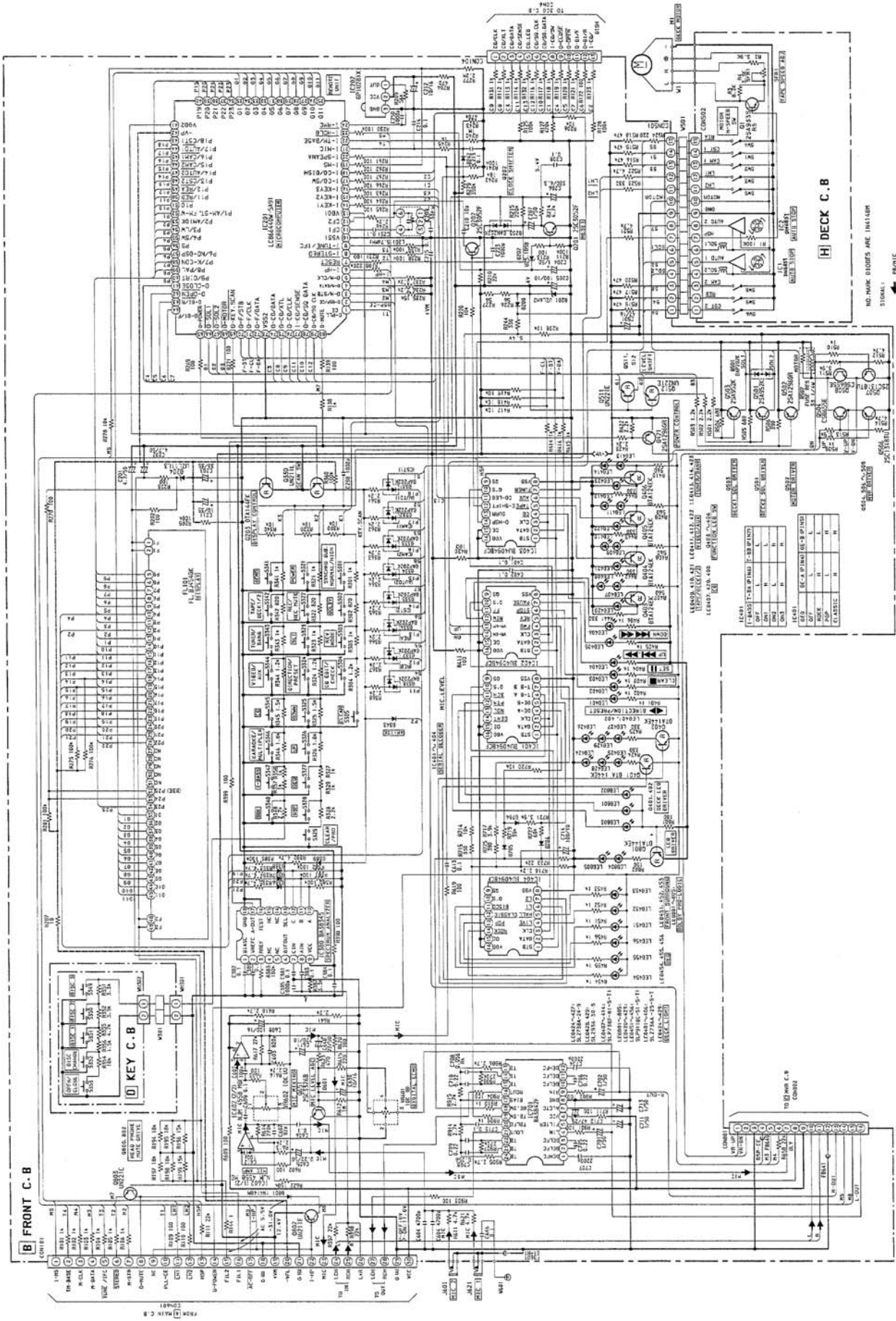
FROM HEAD-2 C.B FROM HEAD-1 C.B
CON551 CON301



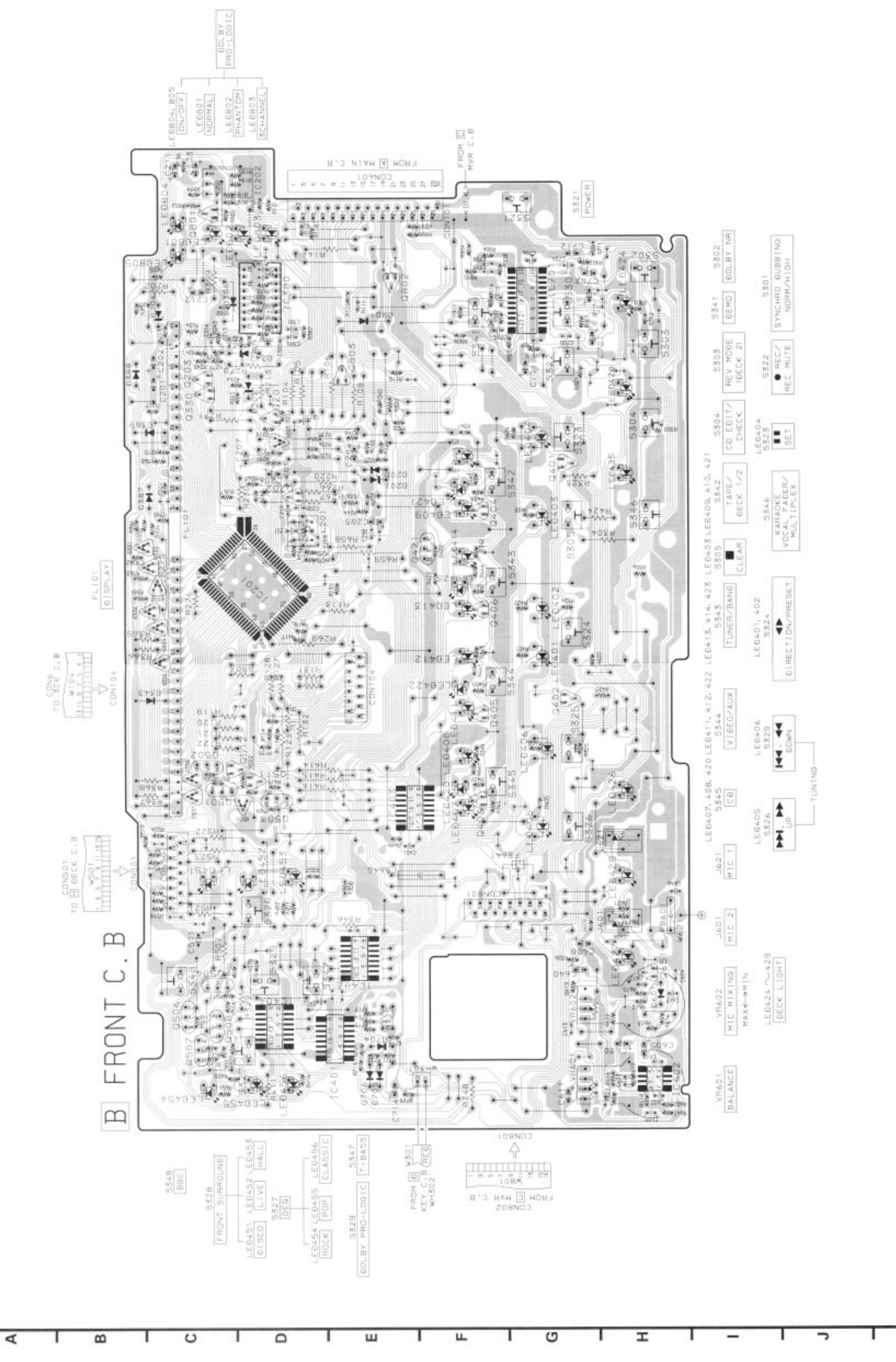
SCHEMATIC DIAGRAM - 1 (MAIN)



SCHEMATIC DIAGRAM - 2 (FRONT)



1 2 3 4 5 6 7 8 9 10 11 12 13 14



B FRONT C.B.



- 554B BBE
- 552B FRONT SURROUND
- LED451 LED452 LED453 LED454 LED455 LED456
- DISCO LIVE HALL
- 5577 VEO
- ROCK POP CLASSIC
- 5529 DOLBY PRO-LOGIC
- 5547 DOLBY PRO-LOGIC F-BASS
- FROM W801 KEY C.B. (REC) WH202
- CONS1
- FROM CONBZ FROM NVR C.B.

- VR601 BALANCE
- VR602 MIC MIXING
- J601 MIC 2
- J621 MIC 1
- LED405 5576 UP
- LED406 5525 DOWN
- LED401, 402 5524 DIRECTION/PRESET
- 5546 KARAOKE VOCAL FADER/MULTIPLY
- 5544 TAPE/BECK 1/2
- 5545 CLEAR
- 5543 TUNER/BAND
- 5544 VIBED/AUX
- 5545 CO
- 5546 MAX & MIN
- 5547 LED424 ~429 BECK LIGHT
- 5548 LED404
- 5549 SET
- 5550 REC/ MUTE
- 5551 SYNC HD RUBBING NORM/HIGH
- 5552 REC MUTE
- 5553 REV MODE BECK 2
- 5554 CB EDIT/ CHECK
- 5555 TAPE/ BECK 1/2
- 5556 CLEAR
- 5557 TUNER/BAND
- 5558 VIBED/AUX
- 5559 CO
- 5560 VIBED/AUX
- 5561 MIC 2
- 5562 MIC 1
- 5563 LED405 5576 UP
- 5564 LED406 5525 DOWN
- 5565 LED401, 402 5524 DIRECTION/PRESET
- 5566 KARAOKE VOCAL FADER/MULTIPLY
- 5567 TAPE/ BECK 1/2
- 5568 CLEAR
- 5569 TUNER/BAND
- 5570 5543
- 5571 5544
- 5572 5545
- 5573 5546
- 5574 5547
- 5575 5548
- 5576 5549
- 5577 5550
- 5578 5551
- 5579 5552
- 5580 5553
- 5581 5554
- 5582 5555
- 5583 5556
- 5584 5557
- 5585 5558
- 5586 5559
- 5587 5560
- 5588 5561
- 5589 5562
- 5590 5563
- 5591 5564
- 5592 5565
- 5593 5566
- 5594 5567
- 5595 5568
- 5596 5569
- 5597 5570
- 5598 5571
- 5599 5572
- 5600 5573
- 5601 5574
- 5602 5575
- 5603 5576
- 5604 5577
- 5605 5578
- 5606 5579
- 5607 5580
- 5608 5581
- 5609 5582
- 5610 5583
- 5611 5584
- 5612 5585
- 5613 5586
- 5614 5587
- 5615 5588
- 5616 5589
- 5617 5590
- 5618 5591
- 5619 5592
- 5620 5593
- 5621 5594
- 5622 5595
- 5623 5596
- 5624 5597
- 5625 5598
- 5626 5599
- 5627 5600
- 5628 5601
- 5629 5602
- 5630 5603
- 5631 5604
- 5632 5605
- 5633 5606
- 5634 5607
- 5635 5608
- 5636 5609
- 5637 5610
- 5638 5611
- 5639 5612
- 5640 5613
- 5641 5614
- 5642 5615
- 5643 5616
- 5644 5617
- 5645 5618
- 5646 5619
- 5647 5620
- 5648 5621
- 5649 5622
- 5650 5623
- 5651 5624
- 5652 5625
- 5653 5626
- 5654 5627
- 5655 5628
- 5656 5629
- 5657 5630
- 5658 5631
- 5659 5632
- 5660 5633
- 5661 5634
- 5662 5635
- 5663 5636
- 5664 5637
- 5665 5638
- 5666 5639
- 5667 5640
- 5668 5641
- 5669 5642
- 5670 5643
- 5671 5644
- 5672 5645
- 5673 5646
- 5674 5647
- 5675 5648
- 5676 5649
- 5677 5650
- 5678 5651
- 5679 5652
- 5680 5653
- 5681 5654
- 5682 5655
- 5683 5656
- 5684 5657
- 5685 5658
- 5686 5659
- 5687 5660
- 5688 5661
- 5689 5662
- 5690 5663
- 5691 5664
- 5692 5665
- 5693 5666
- 5694 5667
- 5695 5668
- 5696 5669
- 5697 5670
- 5698 5671
- 5699 5672
- 5700 5673
- 5701 5674
- 5702 5675
- 5703 5676
- 5704 5677
- 5705 5678
- 5706 5679
- 5707 5680
- 5708 5681
- 5709 5682
- 5710 5683
- 5711 5684
- 5712 5685
- 5713 5686
- 5714 5687
- 5715 5688
- 5716 5689
- 5717 5690
- 5718 5691
- 5719 5692
- 5720 5693
- 5721 5694
- 5722 5695
- 5723 5696
- 5724 5697
- 5725 5698
- 5726 5699
- 5727 5700
- 5728 5701
- 5729 5702
- 5730 5703
- 5731 5704
- 5732 5705
- 5733 5706
- 5734 5707
- 5735 5708
- 5736 5709
- 5737 5710
- 5738 5711
- 5739 5712
- 5740 5713
- 5741 5714
- 5742 5715
- 5743 5716
- 5744 5717
- 5745 5718
- 5746 5719
- 5747 5720
- 5748 5721
- 5749 5722
- 5750 5723
- 5751 5724
- 5752 5725
- 5753 5726
- 5754 5727
- 5755 5728
- 5756 5729
- 5757 5730
- 5758 5731
- 5759 5732
- 5760 5733
- 5761 5734
- 5762 5735
- 5763 5736
- 5764 5737
- 5765 5738
- 5766 5739
- 5767 5740
- 5768 5741
- 5769 5742
- 5770 5743
- 5771 5744
- 5772 5745
- 5773 5746
- 5774 5747
- 5775 5748
- 5776 5749
- 5777 5750
- 5778 5751
- 5779 5752
- 5780 5753
- 5781 5754
- 5782 5755
- 5783 5756
- 5784 5757
- 5785 5758
- 5786 5759
- 5787 5760
- 5788 5761
- 5789 5762
- 5790 5763
- 5791 5764
- 5792 5765
- 5793 5766
- 5794 5767
- 5795 5768
- 5796 5769
- 5797 5770
- 5798 5771
- 5799 5772
- 5800 5773
- 5801 5774
- 5802 5775
- 5803 5776
- 5804 5777
- 5805 5778
- 5806 5779
- 5807 5780
- 5808 5781
- 5809 5782
- 5810 5783
- 5811 5784
- 5812 5785
- 5813 5786
- 5814 5787
- 5815 5788
- 5816 5789
- 5817 5790
- 5818 5791
- 5819 5792
- 5820 5793
- 5821 5794
- 5822 5795
- 5823 5796
- 5824 5797
- 5825 5798
- 5826 5799
- 5827 5800
- 5828 5801
- 5829 5802
- 5830 5803
- 5831 5804
- 5832 5805
- 5833 5806
- 5834 5807
- 5835 5808
- 5836 5809
- 5837 5810
- 5838 5811
- 5839 5812
- 5840 5813
- 5841 5814
- 5842 5815
- 5843 5816
- 5844 5817
- 5845 5818
- 5846 5819
- 5847 5820
- 5848 5821
- 5849 5822
- 5850 5823
- 5851 5824
- 5852 5825
- 5853 5826
- 5854 5827
- 5855 5828
- 5856 5829
- 5857 5830
- 5858 5831
- 5859 5832
- 5860 5833
- 5861 5834
- 5862 5835
- 5863 5836
- 5864 5837
- 5865 5838
- 5866 5839
- 5867 5840
- 5868 5841
- 5869 5842
- 5870 5843
- 5871 5844
- 5872 5845
- 5873 5846
- 5874 5847
- 5875 5848
- 5876 5849
- 5877 5850
- 5878 5851
- 5879 5852
- 5880 5853
- 5881 5854
- 5882 5855
- 5883 5856
- 5884 5857
- 5885 5858
- 5886 5859
- 5887 5860
- 5888 5861
- 5889 5862
- 5890 5863
- 5891 5864
- 5892 5865
- 5893 5866
- 5894 5867
- 5895 5868
- 5896 5869
- 5897 5870
- 5898 5871
- 5899 5872
- 5900 5873
- 5901 5874
- 5902 5875
- 5903 5876
- 5904 5877
- 5905 5878
- 5906 5879
- 5907 5880
- 5908 5881
- 5909 5882
- 5910 5883
- 5911 5884
- 5912 5885
- 5913 5886
- 5914 5887
- 5915 5888
- 5916 5889
- 5917 5890
- 5918 5891
- 5919 5892
- 5920 5893
- 5921 5894
- 5922 5895
- 5923 5896
- 5924 5897
- 5925 5898
- 5926 5899
- 5927 5900
- 5928 5901
- 5929 5902
- 5930 5903
- 5931 5904
- 5932 5905
- 5933 5906
- 5934 5907
- 5935 5908
- 5936 5909
- 5937 5910
- 5938 5911
- 5939 5912
- 5940 5913
- 5941 5914
- 5942 5915
- 5943 5916
- 5944 5917
- 5945 5918
- 5946 5919
- 5947 5920
- 5948 5921
- 5949 5922
- 5950 5923
- 5951 5924
- 5952 5925
- 5953 5926
- 5954 5927
- 5955 5928
- 5956 5929
- 5957 5930
- 5958 5931
- 5959 5932
- 5960 5933
- 5961 5934
- 5962 5935
- 5963 5936
- 5964 5937
- 5965 5938
- 5966 5939
- 5967 5940
- 5968 5941
- 5969 5942
- 5970 5943
- 5971 5944
- 5972 5945
- 5973 5946
- 5974 5947
- 5975 5948
- 5976 5949
- 5977 5950
- 5978 5951
- 5979 5952
- 5980 5953
- 5981 5954
- 5982 5955
- 5983 5956
- 5984 5957
- 5985 5958
- 5986 5959
- 5987 5960
- 5988 5961
- 5989 5962
- 5990 5963
- 5991 5964
- 5992 5965
- 5993 5966
- 5994 5967
- 5995 5968
- 5996 5969
- 5997 5970
- 5998 5971
- 5999 5972
- 6000 5973

1 2 3 4 5 6 7 8 9 10 11 12 13 14

A

B

C

D

E

F

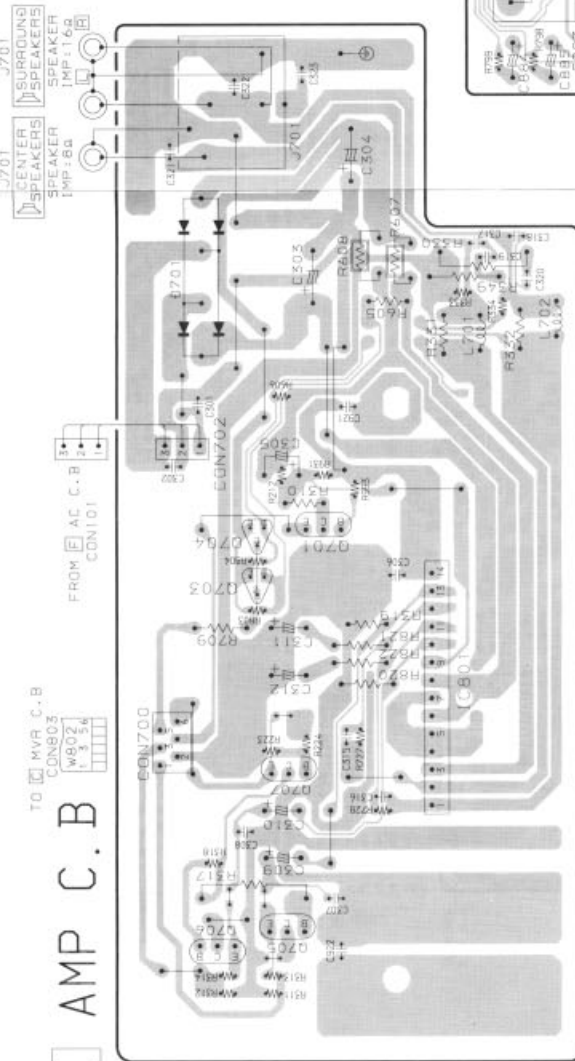
G

H

I

J

E AMP C.B.



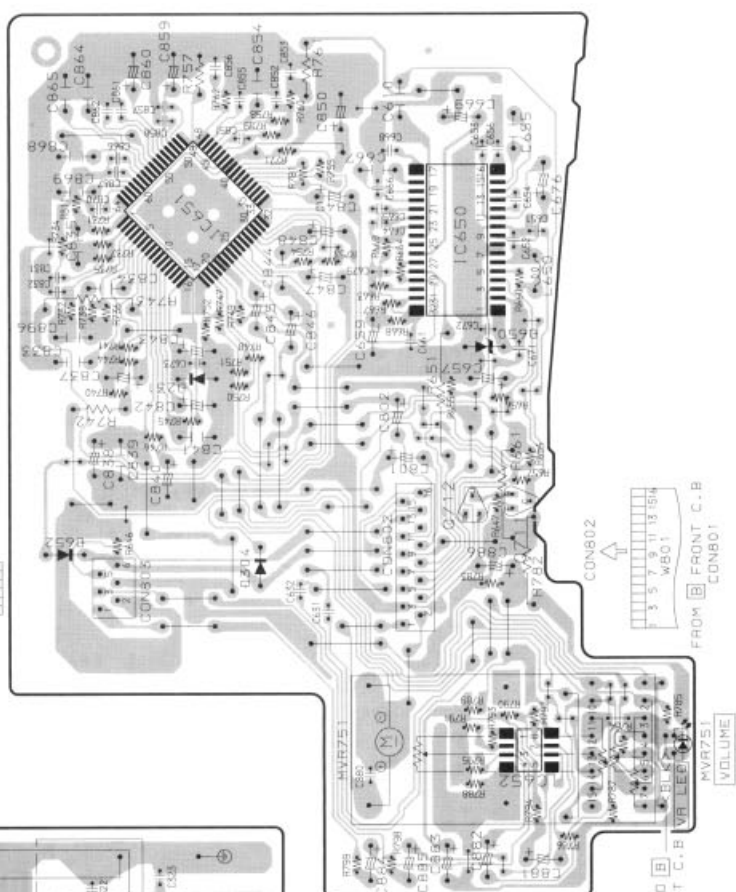
J701 CENTER SPEAKER
J701 SURROUND SPEAKERS

TO MVR C.B. CON803
WB02 1 3 34

FROM AC C.B. CON101

TO AMP C.B. CON700
WB02 1 3 34

C MVR C.B.



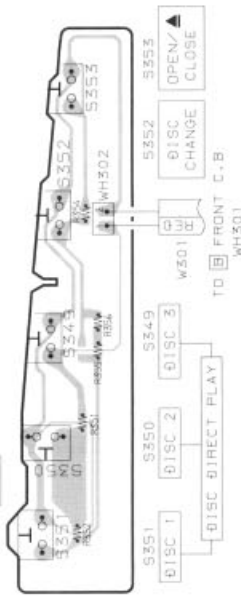
CON802

5 7 9 11 13 15

FROM FRONT C.B. CON801

TO FRONT C.B. CON801

D KEY C.B.



TO FRONT C.B. WH301

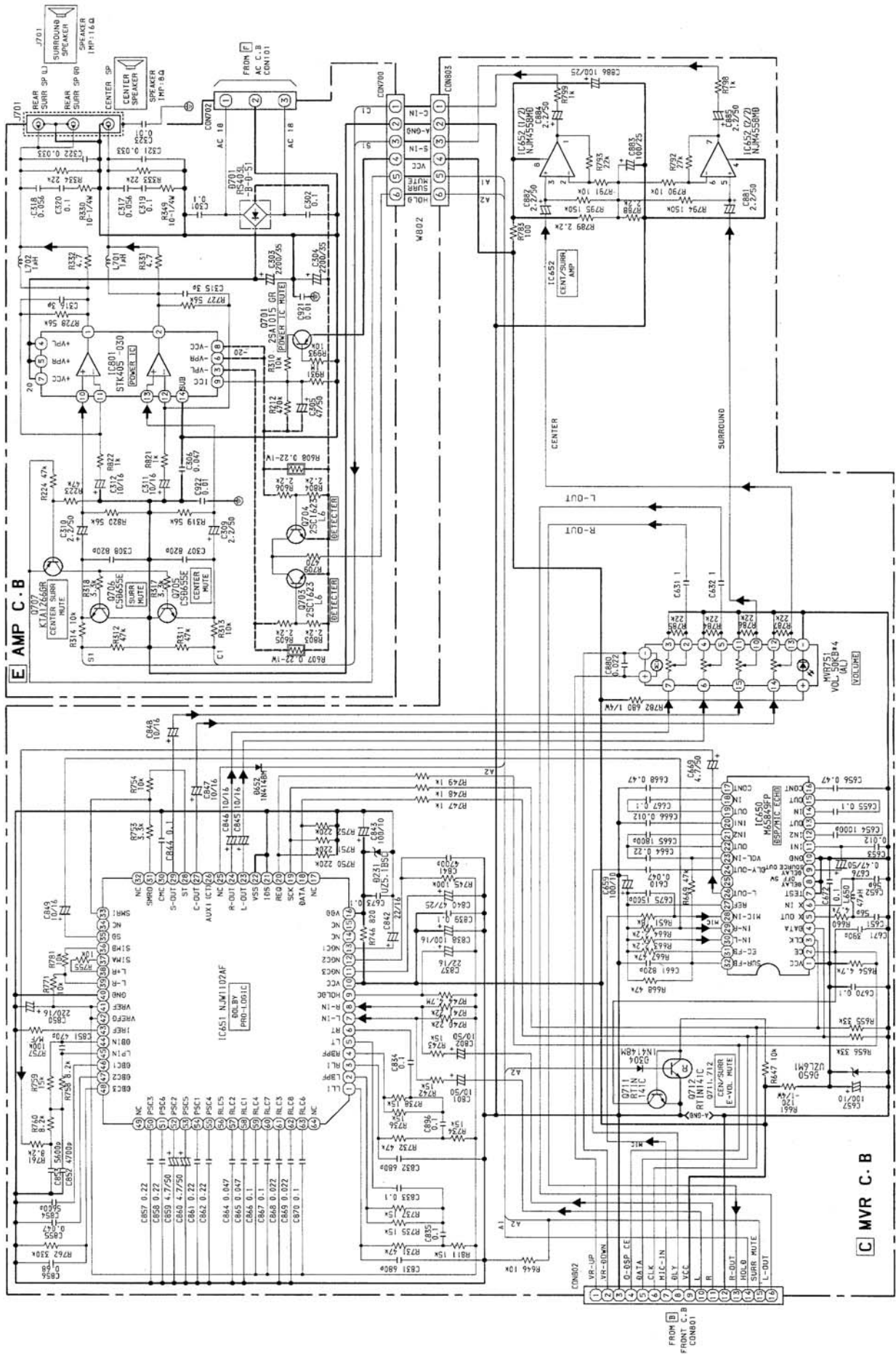
DISC CHANGE

DISC OPEN/CLOSE

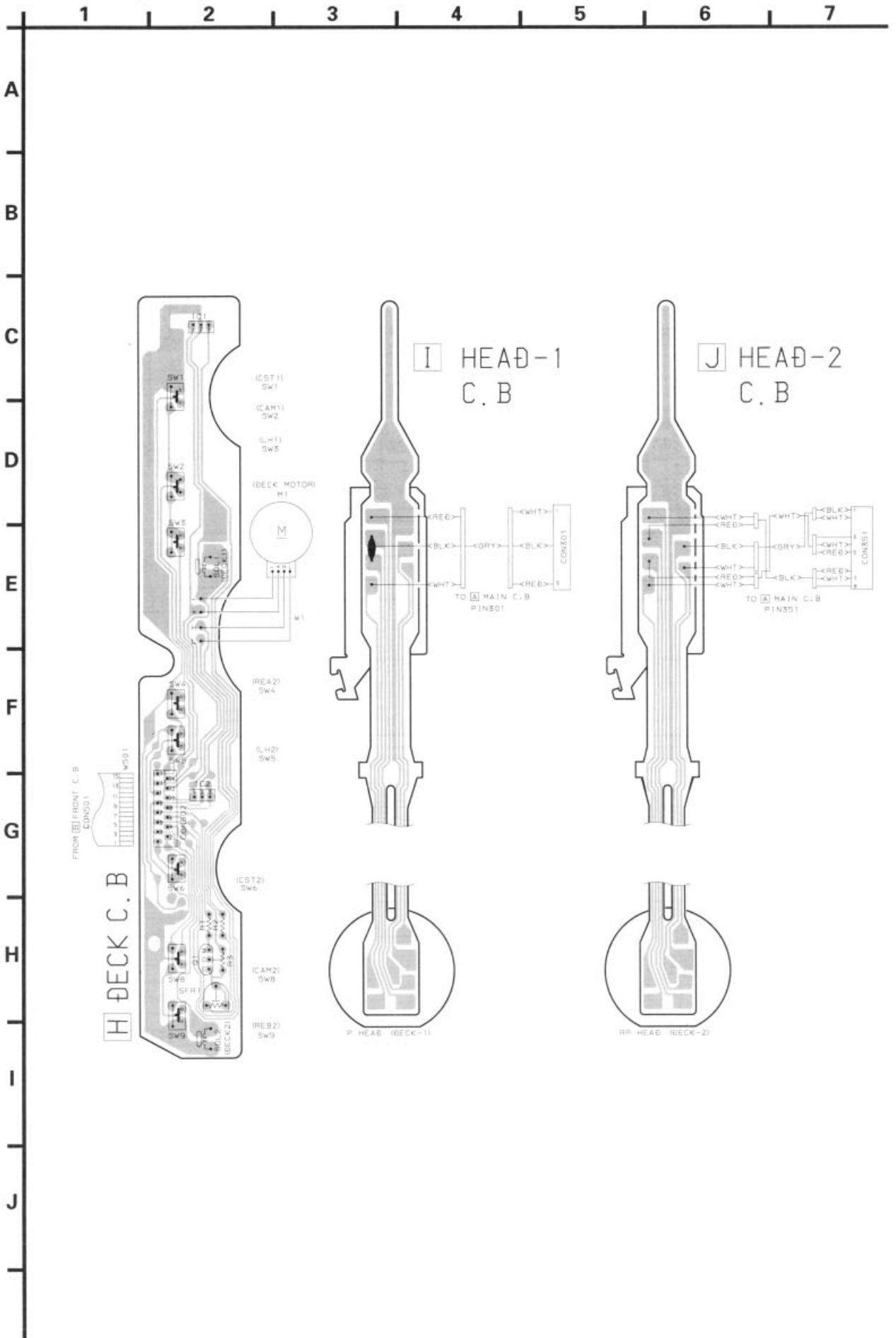
DISC DIRECT PLAY

TO AMP C.B. CON700
WB02 1 3 34

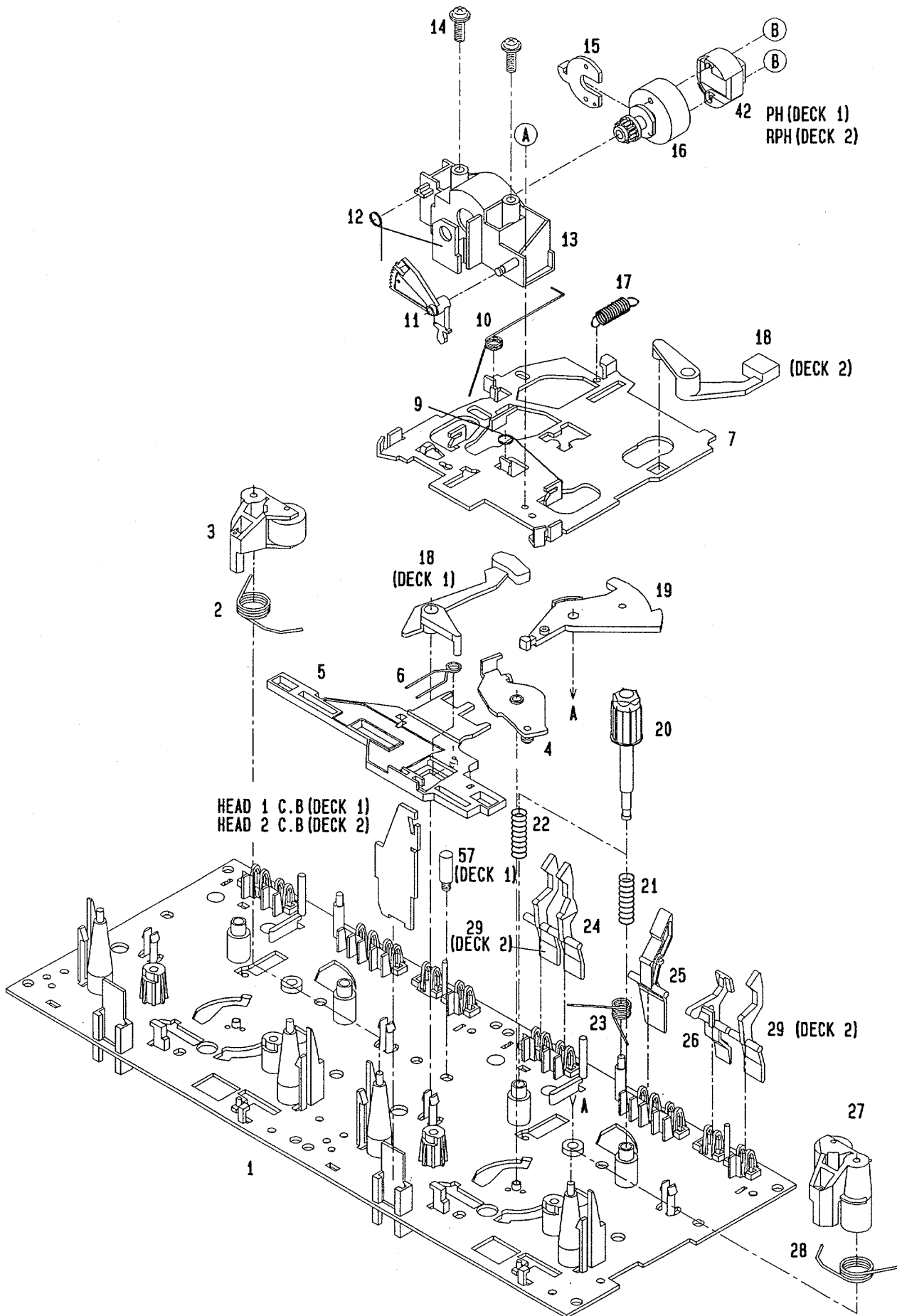
SCHEMATIC DIAGRAM - 3 (MVR/AMP)

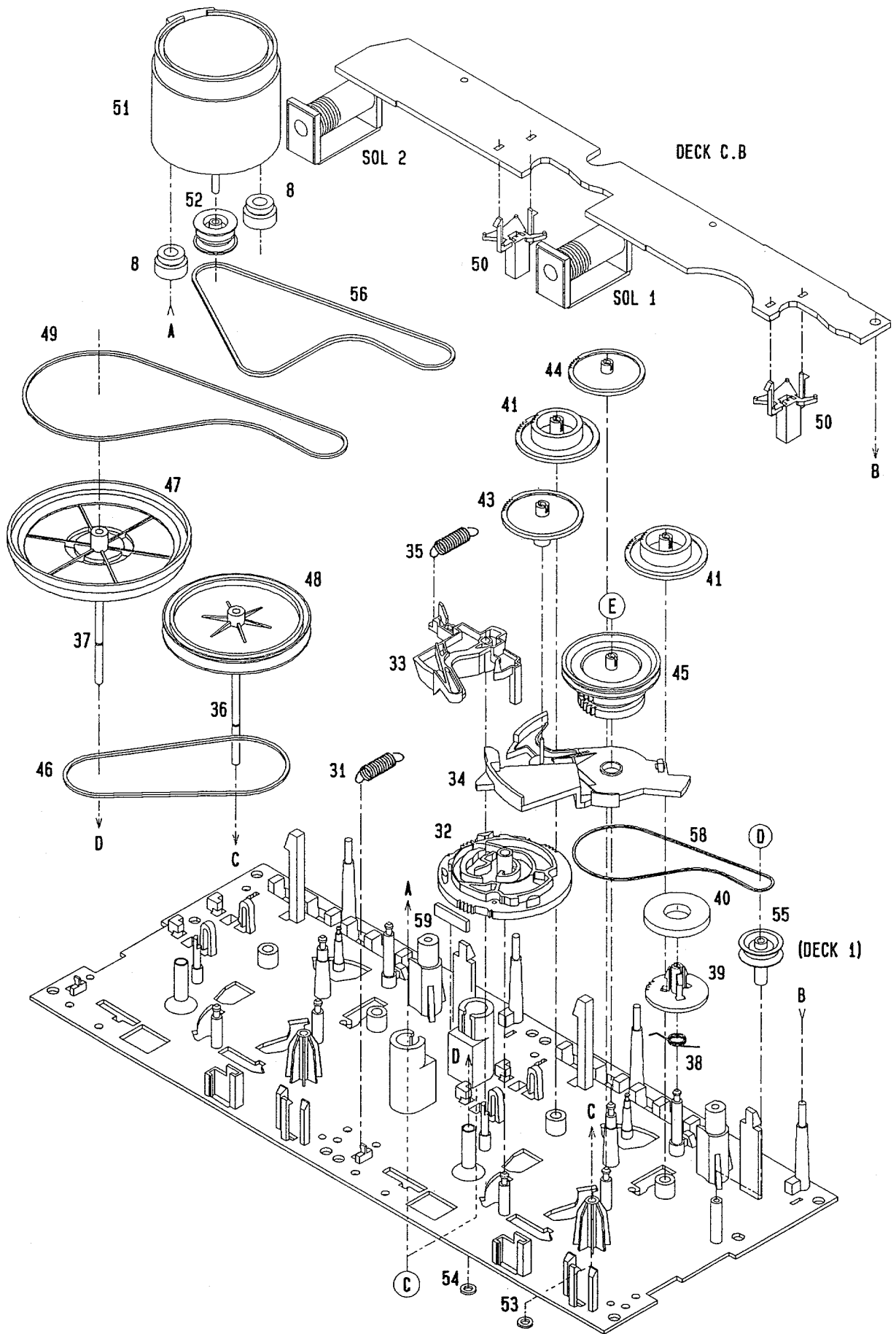


WIRING - 4 (DECK)



TAPE MECHANISM EXPLODED VIEW 1 / 1



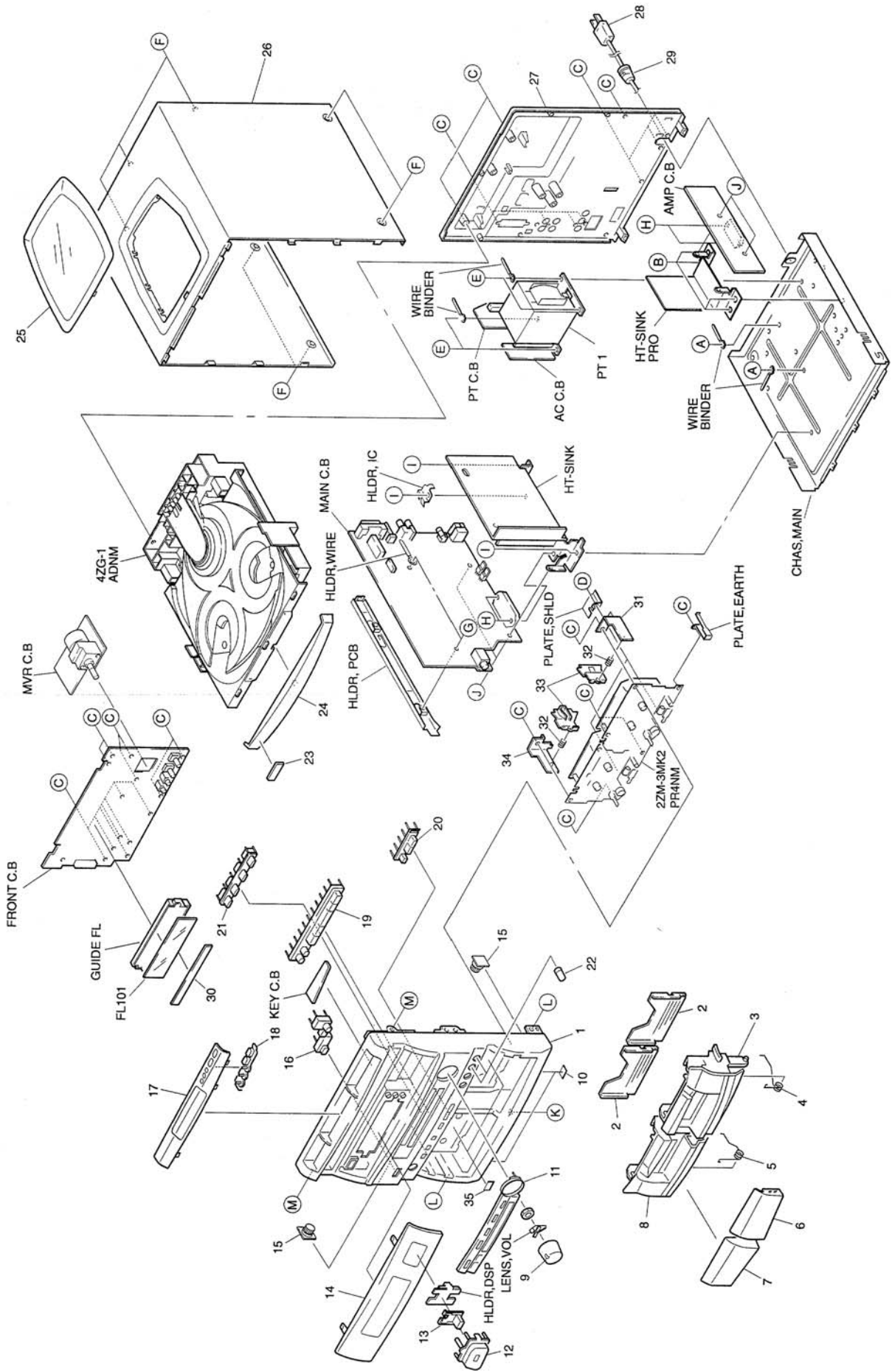


TAPE MECHANISM PARTS LIST 1 / 1

If can't understand for Description please kindly refer to "REFERENCE NAME LIST".

REF. NO.	PART NO.	KANRI NO.	DESCRIPTION	REF. NO.	PART NO.	KANRI NO.	DESCRIPTION
1	82-ZM3-301-519		CHAS ASSY, M2	36	82-ZM1-236-019		CAPSTAN N 2-41.5
2	82-ZM1-258-110		SPR-T, PINCH L	37	82-ZM1-239-019		CAPSTAN N 2.2-41.7
3	82-ZM1-341-110		LVR ASSY, PINCH L2	38	82-ZM1-322-019		SPR-T, FR60
4	82-ZM1-333-010		PLATE, LINK 2	39	82-ZM1-220-219		GEAR, IDLER
5	82-ZM1-266-11K		LVR, DIR	40	82-ZM3-616-019		RING MAGNET 4
6	82-ZM1-214-010		SPR-T, DIR	41	82-ZM1-216-31K		GEAR, REEL
7	82-ZM1-206-81K		CHAS, HEAD	42	87-A90-319-010		HEAD, PH HADKH2 FPC
8	82-ZM3-307-019		CUSH-G, DIA3.7-8-3.2	42	87-A90-320-010		HEAD, RPH HADKH5 FPC
9	82-ZM1-269-219		SPR-T, BRG	43	82-ZM1-225-21K		GEAR, FR
10	82-ZM1-219-119		SPR-T, LINK	44	82-ZM1-226-019		GEAR, REW
11	82-ZM1-210-119		GEAR, H T	45	82-ZM3-333-310		SLIP DISK ASSY 2
12	82-ZM1-213-019		SPR-T, HEAD	46	82-ZM1-338-010		BELT FR4
13	82-ZM1-207-619		GUIDE, TAPE	47	82-ZM1-349-110		FLY-WHL, R W(DECK 2)
14	86-ZM4-206-010		S-SCREW, AZIMUTH	47	82-ZM3-338-110		FLY-WHL, R3 W(DECK 1)
15	82-ZM1-314-119		PLATE, HEAD	48	82-ZM1-348-010		FLY-WHL, L W(DECK 2)
16	82-ZM1-208-119		HLDR, HEAD	48	82-ZM1-348-010		FLY-WHL, L W(DECK 1)
17	82-ZM1-218-019		SPR-E, HB	49	82-ZM3-329-210		BELT, SBU R2
18	82-ZM1-263-110		LVR, EJECT L (DECK 1)	50	82-ZM1-245-210		HLDR, IC
18	82-ZM1-264-010		LVR, EJECT R (DECK 2)	51	87-045-347-019		MOT, SHU2L 70(M1)
19	82-ZM1-222-21K		LVR, PLAY	52	82-ZM3-221-010		PULLEY, MOT 2M
20	82-ZM1-217-319		REEL TABLE	53	82-ZM1-288-019		SH, 1.63-3.2-0.5 SLT
21	82-ZM1-244-510		SPR-C, BT	54	80-ZM6-243-019		SH, 1.75-3.6-0.5 SLT
22	82-ZM1-285-310		SPR-C, BT L	55	82-ZM3-335-210		PULLEY, COUPLER M3(DECK 1)
23	82-ZM1-257-019		SPR-T, CAS	56	82-ZM3-337-010		BELT, SBU MOT 2
24	82-ZM1-241-319		LVR, MC	57	82-ZM3-339-010		SHAFT, COUPLER N3(DECK 1)
25	82-ZM1-242-019		LVR, CAS	58	86-ZM1-206-010		BELT, MAIN L
26	82-ZM1-243-019		LVR, STOP	59	82-ZM3-340-010		SH, BELT D2
27	82-ZM1-344-110		LVR ASSY, PINCH R2	A	85-ZM3-202-010		S-SCREW, TG
28	82-ZM1-259-110		SPR-T, PINCH R	B	80-ZM6-207-019		V+1.6-7
29	82-ZM1-240-11K		LVR, REC (DECK 2)	C	82-ZM3-318-019		S-SCRW MOTOR M2
31	82-ZM1-255-319		SPR-E, LVR DIR	D	87-B10-043-010		W-P, 0.99-4-0.25 SLT
32	82-ZM3-305-01K		GEAR, CAM M2	E	82-ZM3-334-010		PW, 2.16-6-0.4
33	82-ZM1-227-21K		LVR, TRIG				
34	82-ZM3-306-11K		LVR, FR M2				
35	82-ZM1-265-119		SPR-E, TRIG				

MECHANICAL EXPLODED VIEW 1 / 1

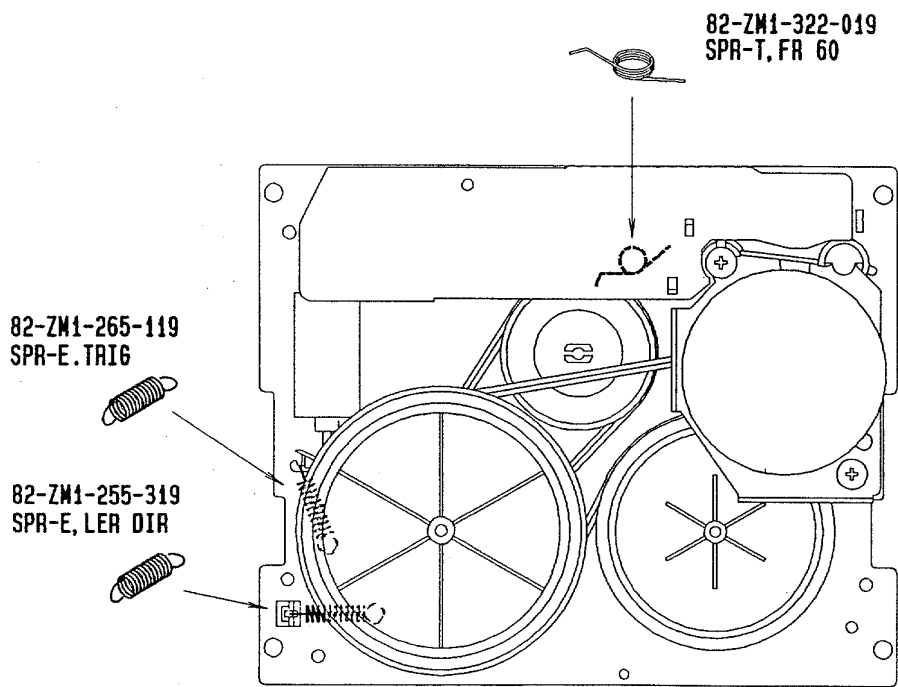
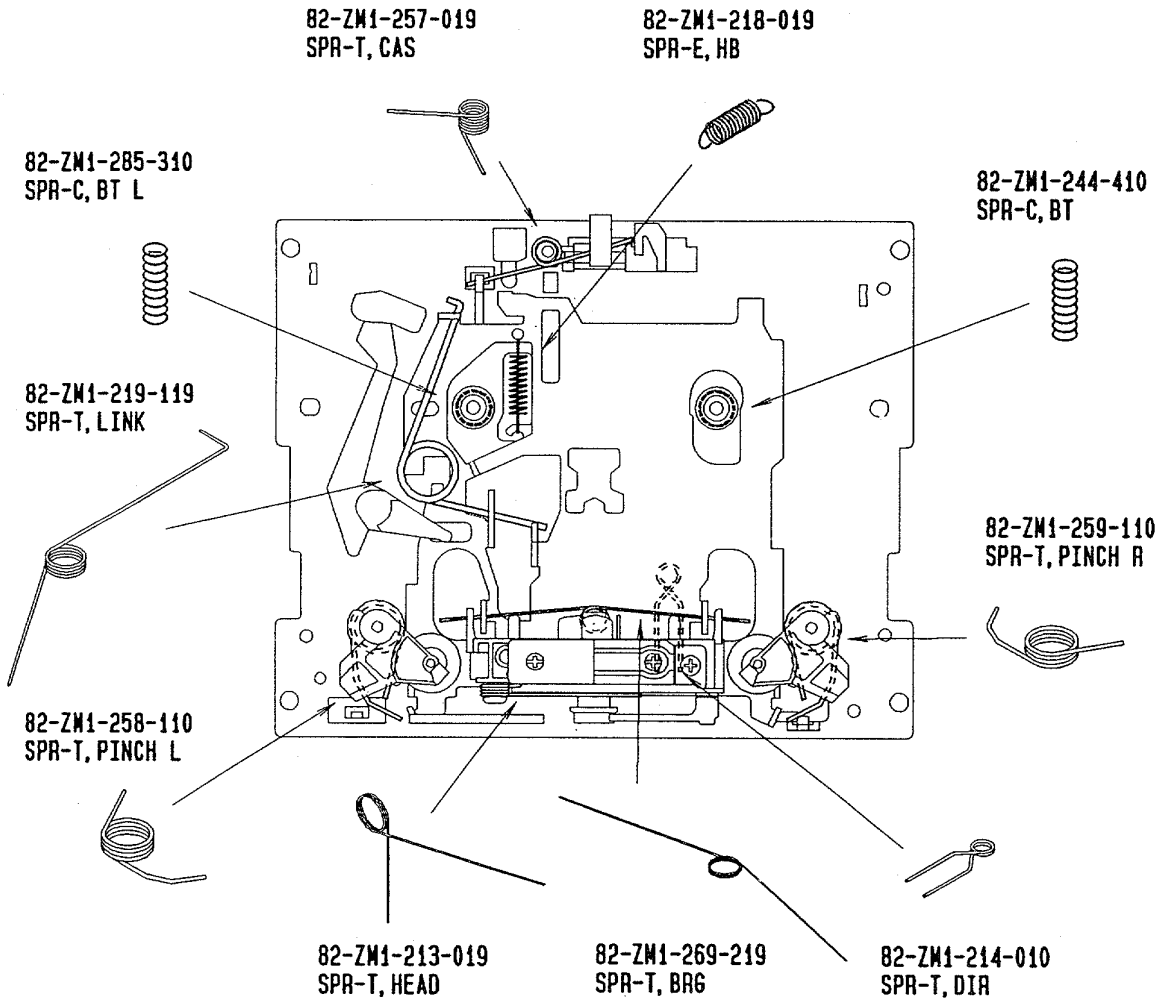


MECHANICAL PARTS LIST 1 / 1

If can't understand for Description please kindly refer to "REFERENCE NAME LIST".

REF. NO.	PART NO.	KANRI NO.	DESCRIPTION	REF. NO.	PART NO.	KANRI NO.	DESCRIPTION
1	86-NFS-051-010		CABI, FR H K1	26	86-NFS-053-010		CABI, STEEL 25S (KIT)
2	86-NF6-061-010		REFLECTOR, CASS	27	86-NFS-041-010		CABI, REAR LHBN
3	86-NF5-003-110		BOX, CASS R	28	87-050-079-010		AC CORD ASSY, E BLK
4	82-NF5-219-010		SPR-T, EJECT 2 (SIN)	29	87-085-185-010		BUSHING, AC CORD (E) CM-22B
5	82-NF5-218-010		SPR-T, EJECT 1 (SIN)	30	86-NF5-214-010		CLOTH, 130-13
6	86-NF5-007-010		WINDOW, CASS R	31	82-NF5-227-010		HLDR, LOCK 2N(*)
7	86-NF5-006-010		WINDOW, CASS L	32	82-NF5-228-010		SPR-C, LOCK
8	86-NF5-002-110		BOX, CASS L	33	82-NF5-229-010		PLATE, LOCK(*)
9	86-NF5-020-010		KNOB, RTRY MAIN	34	82-NF5-226-010		HLDR, LOCK 1N(*)
10	80-VT1-202-010		FELT, 12.5-15.5-2	35	81-532-080-010		LBL, CASS-COMPT
11	86-NF5-009-010		PANEL, FUN	A	87-067-585-010		BVTT+4-6
12	86-NFW-022-010		KEY, DSP	B	87-067-584-010		BVT2+3-6 W/O SLOT
13	86-NFS-018-010		KEY, PRO	C	87-067-703-010		BVT2+3-10 W/O SLOT
14	86-NFS-020-010		WINDOW, DISPLAY	D	87-571-032-419		VIT+2-3
15	87-063-165-010		OIL-DMPR, 150	E	87-078-083-010		BVTT+4-8 SWCH16A SEMS
16	86-NF5-010-010		KEY, POWER	F	87-067-641-010		UTT2+3-8 W/O SLOT BLK
17	86-NF5-005-010		WINDOW, CD	G	87-078-084-010		BVTT+3-6 W/CONVEX
18	86-NF5-018-010		KEY, OPEN	H	87-067-581-010		BVT2+3-15 W/O SLOT
19	86-NF5-016-010		KEY, PLAY	I	87-067-579-010		BVT2+3-8 W/O SLOT
20	86-NF5-017-010		KEY, KARAOKE	J	87-067-633-010		BVT2+3-8 W/O SLOT W/CONVEX
21	86-NF5-011-010		KEY ASSY, FUN	K	87-067-716-010		BVTT+3-6 BLK
22	86-NF6-050-010		KNOB, RTRY MIC M	L	87-591-094-410		QIT+3-6
23	82-NE6-067-010		BADGE, AIWA 30N	M	87-721-097-410		QT2+3-12 W/O SLOT
24	86-NF5-008-010		PANEL, TRAY H				
25	86-NF6-007-010		WINDOW, TOP				

SPRING APPLICATION POSITION

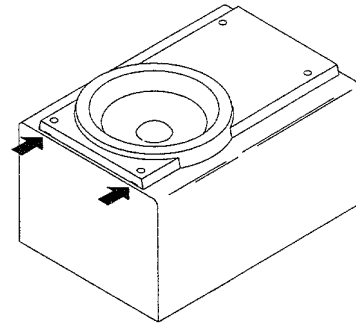


SPEAKER DISASSEMBLY INSTRUCTIONS

Type.1

矢印の位置にマイナスドライバーを差し込んで、パネルを外します。各々のスピーカーユニットのビスを取り、スピーカーユニットを外してください。

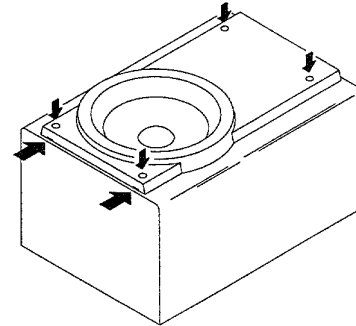
Insert a flat-bladed screwdriver into the position indicated by the arrows and remove the panel. Remove the screws of each speaker unit and then remove the speaker units.



Type.2

グリルフレームを外し、4個のゴムキャップをマイナスドライバーで端の方から持ち上げて外すと中にビスが有りますので、ビスを取り外します。矢印の位置にマイナスドライバーを差し込んで、パネルを外します。各々のスピーカーユニットのビスを取り、スピーカーユニットを外してください。

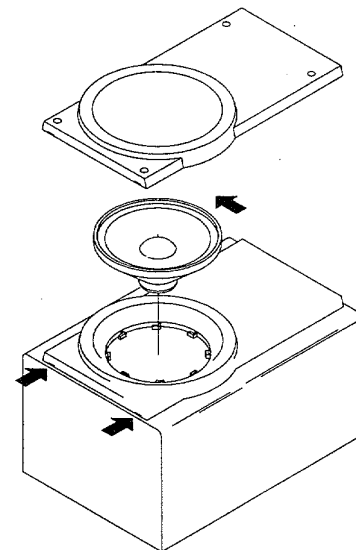
Remove the grill frame and four pieces of rubber caps by pulling out with a flat-bladed screwdriver. Remove the screws from hold where installed rubber caps. Insert a flat-bladed screwdriver into the position indicated by the arrows and remove the panel. Remove the screws of each speaker unit and then remove the speaker units.



Type.3

矢印の位置にマイナスドライバーを差し込んで、パネルを外します。各々のスピーカーユニットの凹にマイナスドライバーを差し込んで、反時計方向に回転させスピーカーユニットを外してください。スピーカーユニット交換後は時計方向にクリック音がするまで、回転させて取り付けます。

Insert a flat-bladed screwdriver into the position indicated by the arrows and remove the panel. Turn the speaker unit to counter-clockwise direction while inserting a flat-bladed screwdriver into one of the hollows around speaker unit, and then remove the speaker unit. After replacing the speaker unit, install it turning to clockwise direction unit "click" sound comes out.



SPEAKER PARTS LIST 1 / 2 (SX-NAV88)

If can't understand for Description please kindly refer to "REFERENCE NAME LIST".

REF. NO.	PART NO.	KANRI NO.	DESCRIPTION	REF. NO.	PART NO.	KANRI NO.	DESCRIPTION
1	86-NSR-020-010		PANEL FR ASSY R	6	86-NSR-006-010		GRILL FRAME ASSY L
2	86-NSR-021-010		PANEL FR ASSY L	7	86-NSS-602-010		SPEAKER W 140 H
3	86-NSR-011-010		PANEL BA R	8	86-NSR-604-010		SPEAKER TW 60
4	86-NSR-012-010		PANEL BA L	9	83-096-614-010		SPEAKER CORD
5	86-NSR-005-010		GRILL FRAME ASSY R	10	86-NSR-610-010		CORD

SX-CR423

NOTE : This SX-CR423 speaker contains SX-C400(center speaker) and SX-R230(rear speaker).

SPEAKER PARTS LIST (2 / 2)

If can't understand for Description please kindly refer to "REFERENCE NAME LIST".

REF. NO.	PART NO.	KANRI NO.	DESCRIPTION	REF. NO.	PART NO.	KANRI NO.	DESCRIPTION
1	85-NSX-001-010		PANEL FR(R230)	6	85-NSY-002-010		PANEL REAR(C400)
2	85-NSX-005-010		GRILL FRAME ASSY(R230)	7	85-NSY-010-010		GRILL FRAME ASSY(C400)
3	85-NSX-601-010		SPEAKER(R230)	8	85-NSY-602-010		SPEAKER(C400)
4	81-VSA-010-010		SPEAKER CORD(R230)	9	83-NSM-010-010		SPEAKER CORD(C400)
5	85-NSY-001-010		PANEL FR(C400)	10	85-NSW-904-010		IB, Y(CCE)

ACCESSORIES / PACKAGE LIST

If can't understand for Description please kindly refer to "REFERENCE NAME LIST".

REF. NO.	PART NO.	KANRI NO.	DESCRIPTION
1	86-NFS-908-010		IB, LH(P)CCE
2	85-NT3-663-010		RC UNIT, RC-T506
3	87-006-225-010		ANT, LOOP ANT NC2
4	87-043-115-010		FEEDER-ANT, FM

REFERENCE NAME LIST

ELECTRICAL SECTION

DESCRIPTION	REFERENCE NAME
ANT	ANTENNAS
C-	CHIP
C-CAP	CAP, CHIP
C-CAP TN	CAP, CHIP TANTALUM
C-COIL	COIL, CHIP
C-DI	DIODE, CHIP
C-DIODE	DIODE, CHIP
C-FET	FET, CHIP
C-FOTR	FILTER, CHIP
C-JACK	JACK, CHIP
C-LED	LED, CHIP
C-RES	RES, CHIP
C-SFR	SFR, CHIP
C-SLIDE SW	SLIDE SWITCH, CHIP
C-SW	SWITCH, CHIP
C-TR	TRANSISTOR, CHIP
C-VR	VOLUME, CHIP
C-ZENER	ZENER, CHIP
CAP, CER	CAP, CERA-SOL
CAP, E	CAP, ELECT
CAP, M/F	CAP, FILM
CAP, TC	CAP, CERA-SOL
CAP, TC-U	CAP, CERA-SOL SS
CAP, TN	CAP, TANTALUM
CERA FIL	FILTER, CERAMIC
CF	FILTER, CERAMIC
DL	DELAY LINE
E/CAP	CAP, ELECT
FILT	FILTER
FLTR	FILTER
FUSE RES	RES, FUSE
MOT	MOTOR
P-DIODE	PHOTO DIODE
P-SNSR	PHOTO SENSER
P-TR	PHOTO TRANSISTOR
POLY VARI	VARIABLE CAPACITOR
PPCAP	CAP, PP
PT	POWER TRANSFORMER
PTR, RES	PTR, MELF
RC	REMOTE CONTROLLER
RES NF	RES, NON-FLAMMABLE
RESO	RESONATOR
SHLD	SHIELD
SOL	SOLENOID
SPKR	SPEAKER
SW, LVR	SWITCH, LEVER
SW, RTRY	SWITCH, ROTARY
SW, SL	SWITCH, SLIDE
TC CAP	CAP, CERA-SOL
THMS	THERMISTOR
TR	TRANSISTOR
TRIMER	CAP, TRIMMER
TUN-CAP	VARIABLE CAPACITOR
VIB, CER	RESONATOR, CERAMIC
VIB, XTAL	RESONATOR, CRYSTAL
VR	VOLUME
ZENER	DIODE, ZENER

MECHANICAL SECTION

DESCRIPTION	REFERENCE NAME
ADHESHIVE	SHEET ADHESHIVE
AZ	AZIMUTH
BAR-ANT	BAR-ANTENNA
BAT	BATTERY
BATT	BATTERY
BRG	BEARING
BTN	BUTTON
CAB	CABINET
CASS	CASSETTE
CHAS	CHASSIS
CLR	COLLAR
CONT	CONTROL
CRSR	CURSOR
CU	CUSHION
CUSH	CUSHION
DIR	DIRECTION
DUBB	DUBBING
FL	FRONT LOADING
FLY-WHL	FLYWHEEL
FR	FRONT
FUN	FUNCTION
G-CU	G-CUSHION
HDL	HANDOL
HIMERON	CLOTH
HINGE, BAT	HINGE, BATTERY
HLDR	HOLDER
HT-SINK	HEAT SINK
IB	INSTRUCTION BOOKLET
IDLE	IDLER
IND, L-R	INDICATOR, L-R
KEY, CONT	KEY, CONTROL
KEY, PRGM	KEY, PROGRAM
KNOB, SL	KNOB, SLIDE
LBL	LABEL
LID, BATT	LID, BATTERY
LID, CASS	LID, CASSETTE
LVR	LEVER
P-SP	P-SPRING
PANEL, CONT	PANEL, CONTROL
PANEL, FR	PANEL, FRONT
PRGM	PROGRAM
PULLY, LOAD MO	PULLY, LOAD MOTOR
RBN	RIBBON
S-	SPECIAL
SEG	SEGMENT
SH	SHEET
SHLD-SH	SHIELD-SHEET
SL	SLIDE
SP	SPRING
SP-SCREW	SPECIAL-SCREW
SPACER, BAT	SPACER, BATTERY
SPR	SPRING
SPR-P	P-SPRING
SPR-PC-PUSH	P-SPRING, C-PUSH
T-SP	T-SPRING
TERM	TERMINAL
TRIG	TRIGGER
TUN	TUNING
VOL	VOLUME
W	WASHER
WHL	WHEEL
WORM-WHL	WORM-WHEEL

サービス技術ニュース	
番号	連絡内容
G-	-
G-	-
G-	-

アイワ株式会社
AIWA CO.,LTD.

9420208, 750038

Tokyo Japan