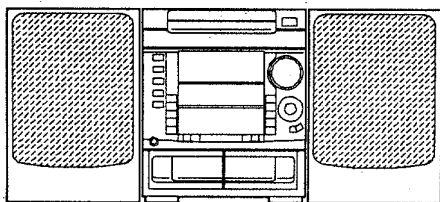


aiwa



NSX-F9



COMPACT DISC STEREO
CASSETTE RECEIVER

- BASIC TAPE MECHANISM : 2ZM-3MK2 PR4NM
- BASIC CD MECHANISM : 6ZG-1 DFNM

• TYPE : HR

SUPPLEMENT

SYSTEM	CD - CASSEIVER	SPEAKER	REMOTE CONTROLLER
NSX-F9	CX-NF9	SX-NAVF9	RC UNIT, 6AS01

- This Service Manual contains information about the difference between NSX-F9 (HR) and NSX-F9 (HE). If requiring the other information, see Service Manual of NSX-F9 (HE).
S/M code No. 09-96B-173-5FP.
- If requiring information about the Speaker, see Service Manual of SX-NAVF9,
S/M Code No. 09-971-177-4FP.

SPECIFICATIONS

<FM Tuner section>

Tuning range 87.5 MHz to 108 MHz
Usable sensitivity(IHF) 13.2 dBf
Antenna terminals 75 ohms (unbalanced)

<MW Tuner section>

Tuning range 531 kHz to 1602 kHz (9 kHz step)
 530 kHz to 1710 kHz (10 kHz step)
Usable sensitivity 350 uV/m
Antenna Loop antenna

<SW Tuner section>

Tuning range 5.900 MHz to 17.900 MHz
Antenna Wire antenna

<Amplifier section>

Power output Rated 160 W + 160 W
 (6 ohms, T.H.D. 1%, 1 kHz)
 Reference: 200 W + 200 W
 (6 ohms, T.H.D. 10%, 1 kHz)

*(without connecting to the SURROUND SPEAKERS)

Total harmonic distortion 0.1% (20 W, 1 kHz, 6 ohms, DIN AUDIO)

Inputs VIDEO/AUX : 150 mV(adjustable)
 MIC 1, MIC 2: 1mV (10 kohms)

Outputs LINE OUT: 200mV
 SUPER WOOFER: 3.1 V
 SPEAKERS: accept speakers of 6 ohms or more
 SURROUND SPEAKERS: accept speakers of 16 ohms or more
 PHONES (stereo jack) : accepts headphones of 32 ohms or more

<Cassette deck section>

Track format 4 tracks, 2 channels stereo
Frequency response CrO₂ tape: 50 Hz – 16000 Hz
 Normal tape: 50 Hz – 15000 Hz
Signal-to noise ratio 60 dB (Dolby B NR ON, CrO₂ tape peak level)
Recording system AC bias
Heads Deck 1 : playback head x 1
 Deck 2 : Recording/Playback/erase head x 1

<Compact disc player section>

Laser Semiconductor laser ($\lambda = 780 \text{ nm}$)
D-A converter 1 bit dual
Signal-to-noise ratio 83 dB (1 kHz, 0 dB)
Harmonic distortion 0.05 % (1 kHz, 0 dB)
Wow and flutter Unmeasurable

<Speaker system SX-NAVF9>

Cabinet type 3 way, bass reflex (magnetic shielded type)

Speakers Woofer : 160 mm cone type
 Tweeter : 80 mm cone type
 Super tweeter: 20 mm ceramic type

Impedance 6 ohms
Output sound pressure level 87 dB/W/m

Dimensions (W x H x D) 260 x 353 x 330mm
Weight 5.9 kg


<General>

Power requirements 120 V / 220 – 230 V / 240 V AC, switchable 50/60 Hz

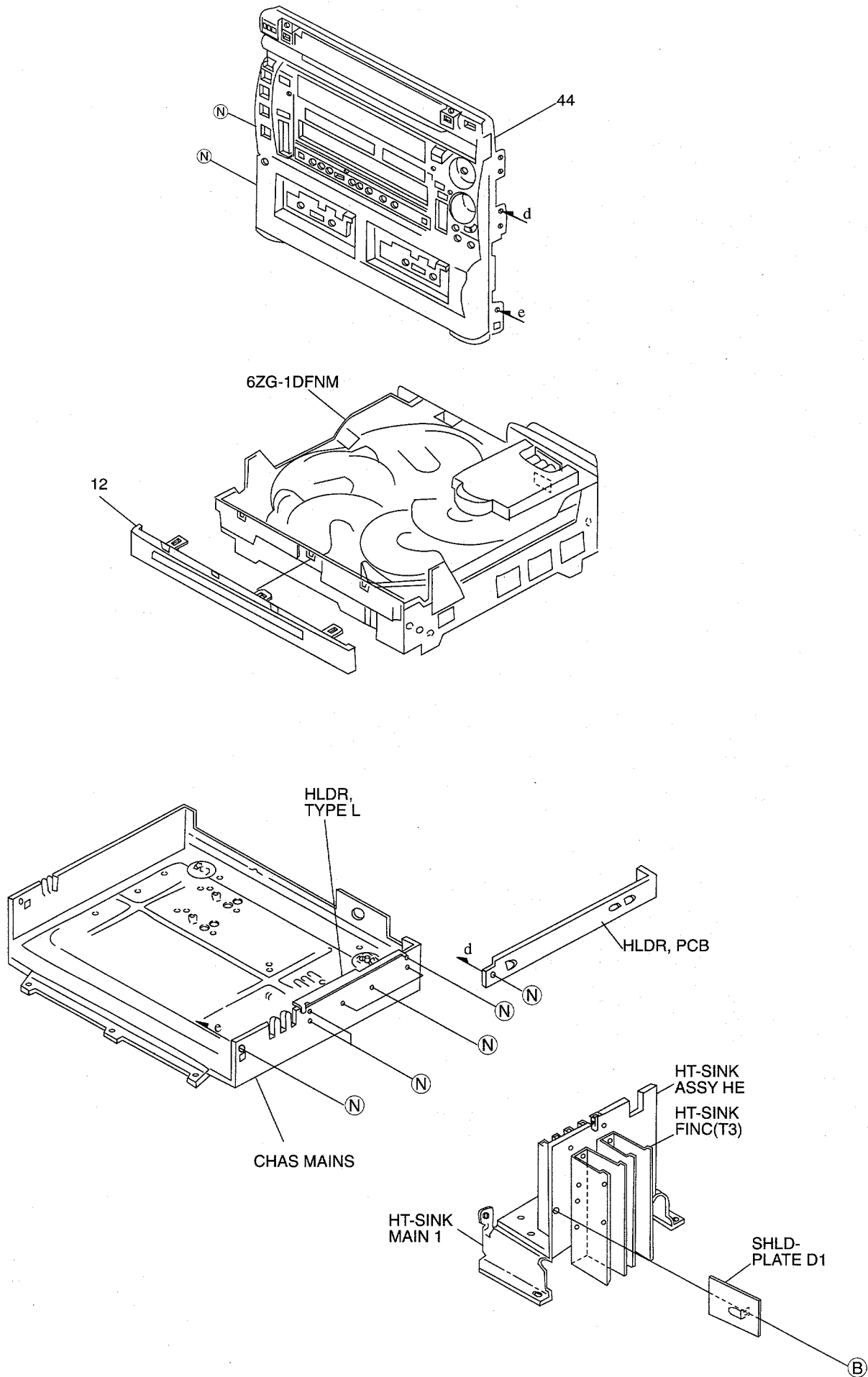
Power consumption 210 W

Dimensions of main unit (W x H x D) 300 x 357.5 x 374 mm

Weight of main unit 13 kg

- Design and specifications are subject to change without notice.
- Dolby noise reduction manufactured under license from Dolby Laboratories Licensing Corporation. "DOLBY" and the double-D symbol  are trademarks of Dolby Laboratories Licensing Corporation.
- The word "BBE" and the "BBE symbol" are trademarks of BBE Sound, Inc. Under license from BBE Sound, Inc.

MECHANICAL EXPLODED VIEW 1/1



ELECTRICAL MAIN PARTS LIST

If can't understand for Description please kindly refer to "REFERENCE NAME LIST".

REF. NO.	PART NO.	KANRI NO.	DESCRIPTION	REF. NO.	PART NO.	KANRI NO.	DESCRIPTION
DIODE				C711	87-010-197-089		C-CAP,S 0.01-25 K B
	87-027-322-089		ZENER,HZ 18-2	C714	87-010-596-089		C-CAP,S 0.047-16 K R
	87-002-843-089		DIODE,1SS108	C716	87-010-198-089		C-CAP,S 0.022-25 K B
				C724	87-010-198-089		C-CAP,S 0.022-25 K B
				C726	87-010-197-089		C-CAP,S 0.01-25 K B
MAIN C.B				C729	87-010-596-089		C-CAP,S 0.047-16 K R
C107	87-A10-417-089		CAP,E 47-63 SME	C731	87-010-198-089		C-CAP,S 0.022-25 K B
C261	87-010-196-089		C-CAP,S 0.1-25 Z F C	C802	87-010-196-089		C-CAP,S 0.1-25 Z F C2012
C305	87-012-157-089		C-CAP,S 330P-50 J CH	L650	87-005-481-089		COIL,47uH J FLR50
C306	87-012-157-089		C-CAP,S 330P-50 J CH	△ PR101	87-026-689-089		PROTECTOR,1A 491 SERI
C313	87-010-179-089		C-CAP,S 1200P-50 K B	PT C.B			
C314	87-010-179-089		C-CAP,S 1200P-50 K B	△ PT001	86-NF9-630-019		PT,6NF-9 H
C454	87-010-176-089		C-CAP,S 680P-50 J SC	PRO C.B			
C455	87-010-178-089		C-CAP,S 1000P-50 K B	C151	87-016-083-089		C-CAP,S 0.15-16 K R
C680	87-010-196-089		C-CAP,S 0.1-25 Z F C				
C700	87-018-209-089		C-CAP,TC U 0.1-50 ZF UP050				
C803	87-018-209-089		C-CAP,TC U 0.1-50 ZF UP050				
C815	87-018-209-089		C-CAP,TC U 0.1-50 ZF UP050				
C901	87-010-196-089		C-CAP,S 0.1-25 Z F C				
△ PR150	87-A90-091-089		PROTECTOR,2A 491 SERI				
FRONT C.B							
C363	87-012-156-089		C-CAP,S 220P-50 J CH GRM				
C364	87-012-156-089		C-CAP,S 220P-50 J CH GRM				
C387	87-015-694-049		CAP,E 0.47-50 M 7L				
C619	87-012-141-089		C-CAP,S 0.22-16 Z F				
C709	87-010-198-089		C-CAP,S 0.022-25 K B				

MECHANICAL PARTS LIST

If can't understand for Description please kindly refer to "REFERENCE NAME LIST".

REF. NO.	PART NO.	KANRI NO.	DESCRIPTION
4	86-NF9-046-010		PANEL,REAR HRJBNM
12	86-NF9-074-010		PANEL,TRAY ASSY
39	86-NF9-016-119		KEY,ASSY DISC
44	86-NF9-001-010		CABI,FR
B	87-067-703-010		BVT2+3-10 W/O SLOT
N	87-591-095-410		QIT+3-8

ACCESSORIES / PACKAGE LIST

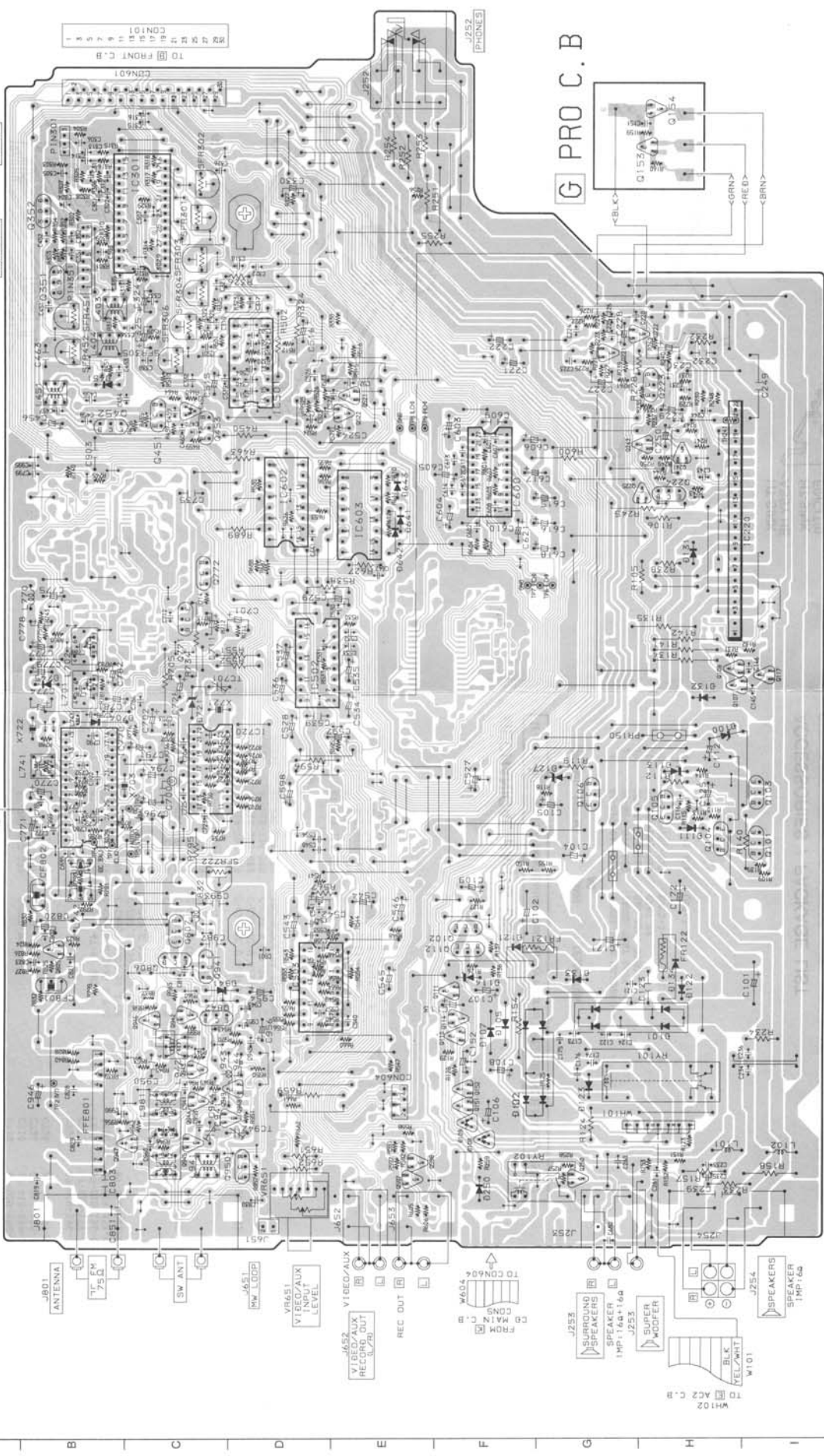
If can't understand for Description please kindly refer to "REFERENCE NAME LIST".

REF. NO.	PART NO.	KANRI NO.	DESCRIPTION
1	86-MA3-702-019		RC UNIT,6AS01

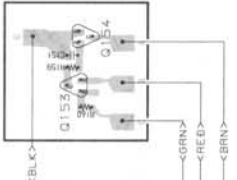
1 2 3 4 5 6 7 8 9 10 11 12 13 14

A MAIN C.B

FROM HEAD-2 C.B FROM HEAD-1 C.B
CON501 1, 2, 3, 7, 8
CON501 1, 1, 3



G PRO C.B



J801 ANTENNA
TIFEM 75Ω
SW ANT
J651 MW LOOP
VR651 VIDEO/AUX INPUT LEVEL
J652 VIDEO/AUX RECORD OUT SL70
REC OUT
W604 FROM MAIN C.B TO CON501

J253 SURROUND SPEAKERS
SPEAKER IMP: 16Ω + 16Ω
J255 SUPER WOOFER

J254 SPEAKERS
SPEAKER IMP: 16Ω

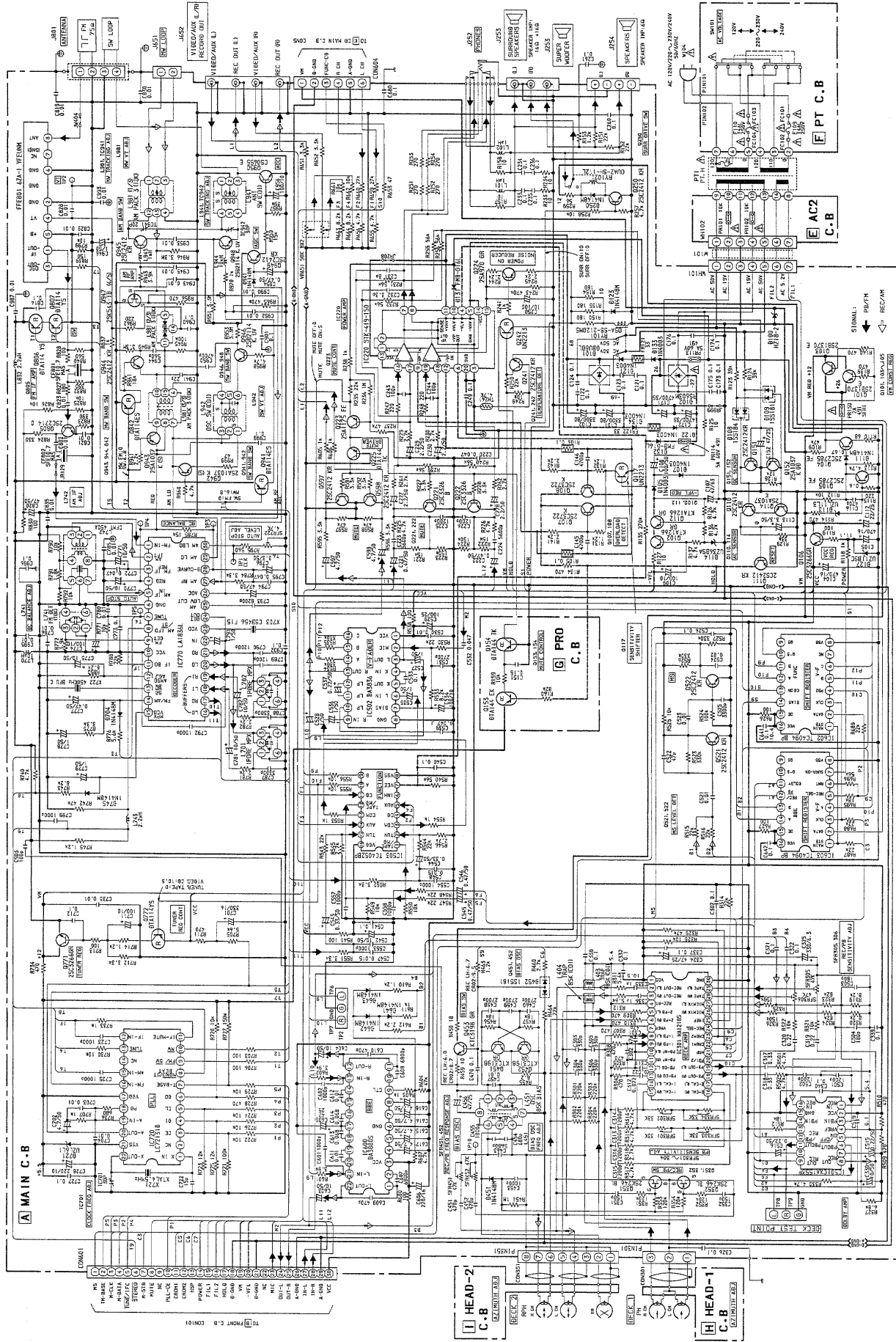
W101 TEL/PRINT
J254

TO AC2 C.B
W102

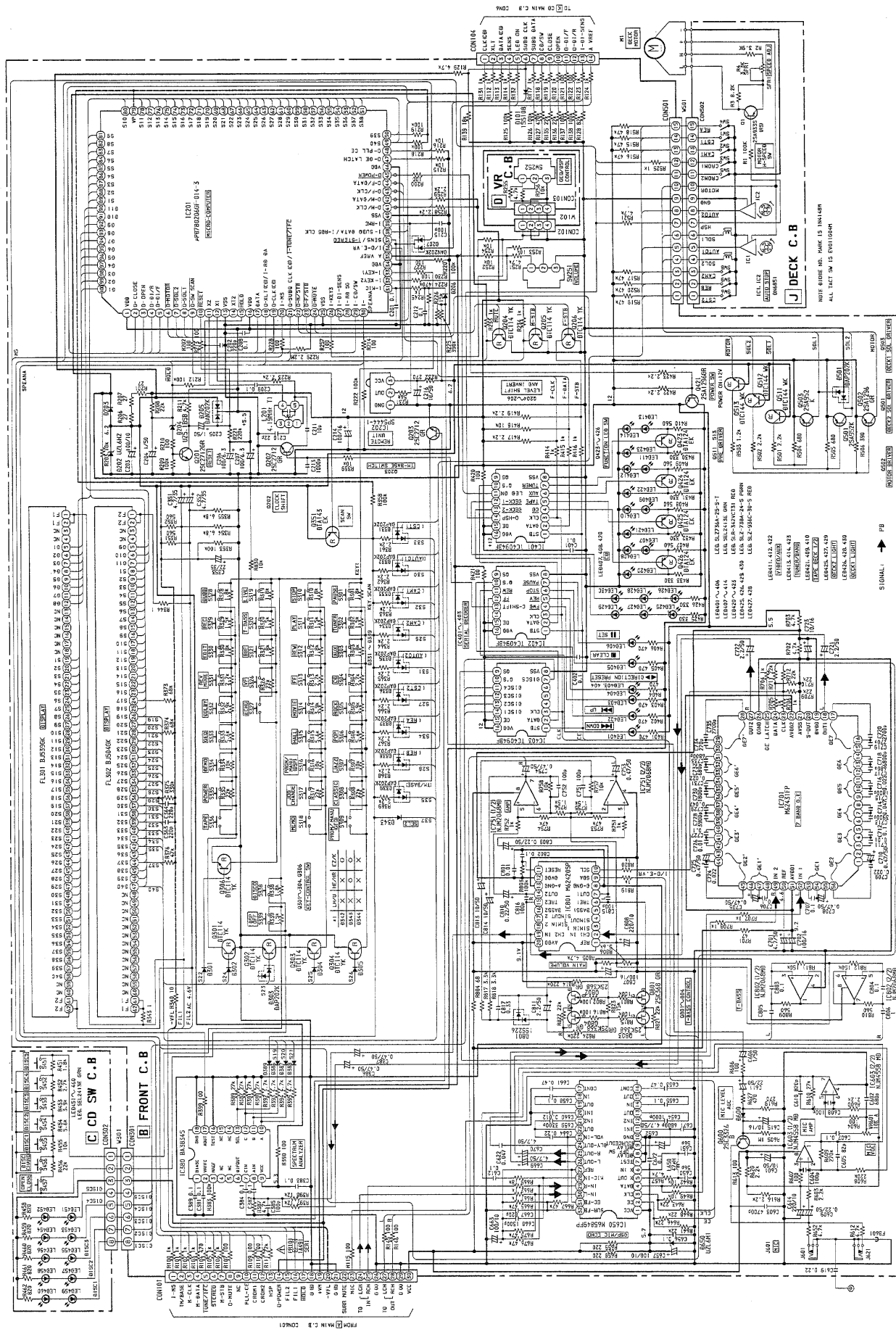
TO CON501 FROM MAIN C.B

J252 PHONES

SCHEMATIC DIAGRAM - 1 (MAIN)

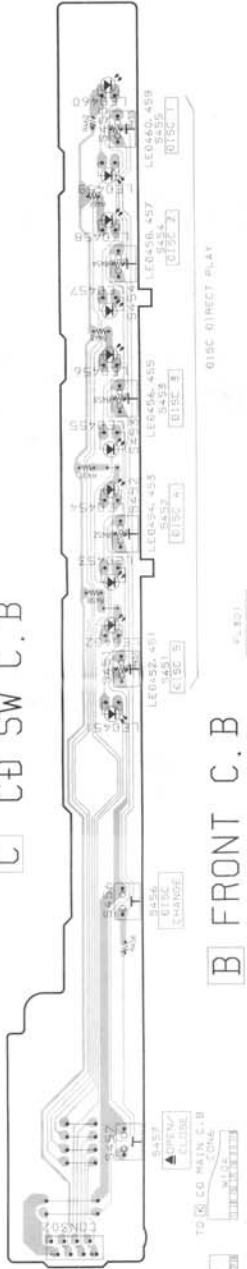


SCHEMATIC DIAGRAM - 2 (FRONT)

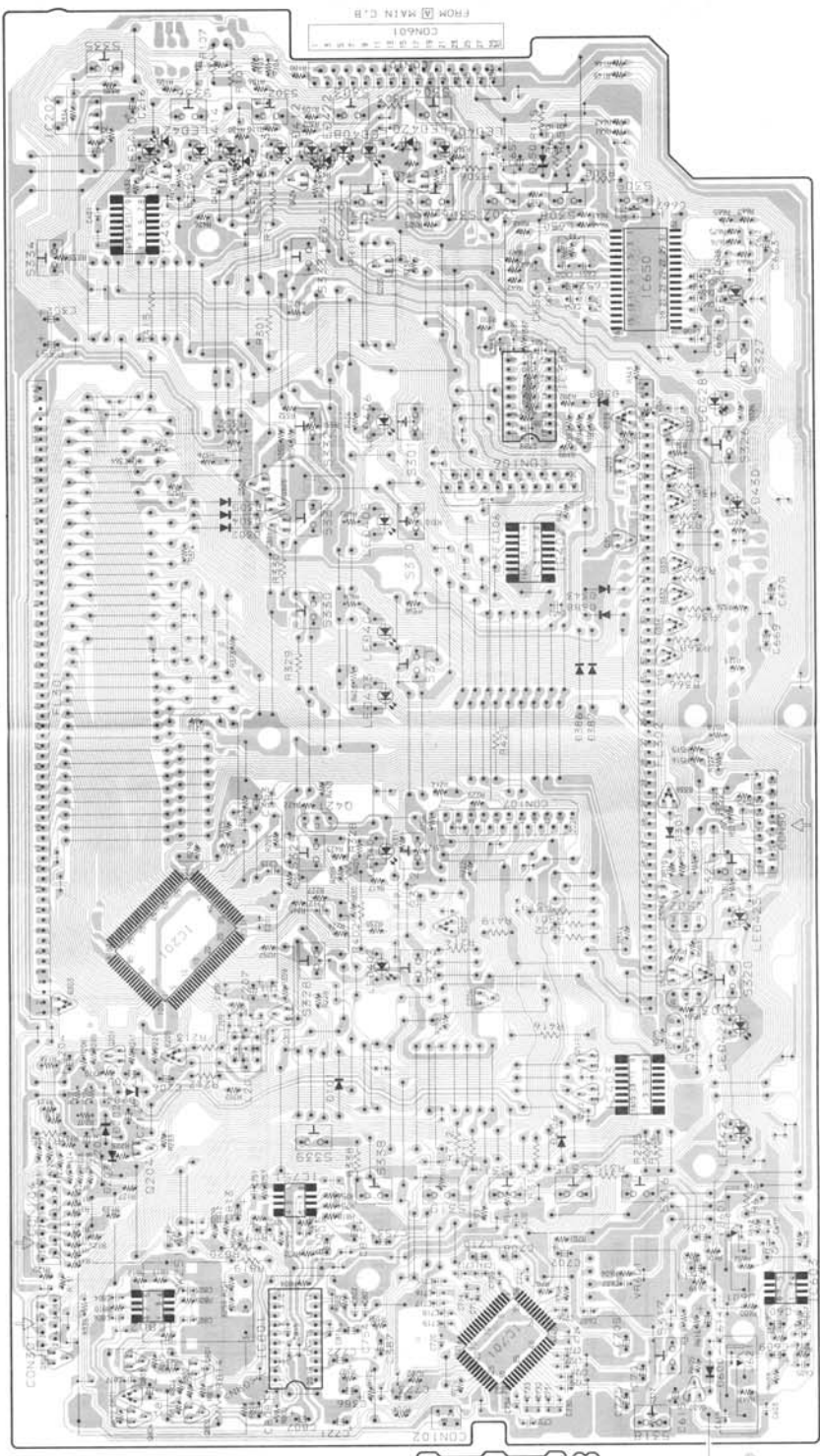


1 2 3 4 5 6 7 8 9 10 11 12 13 14

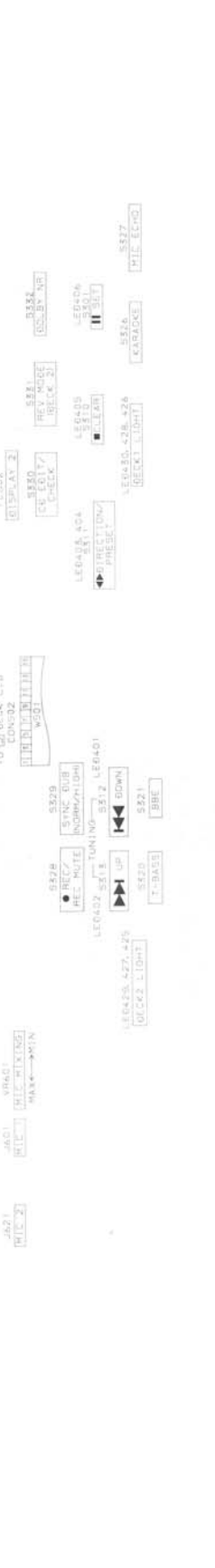
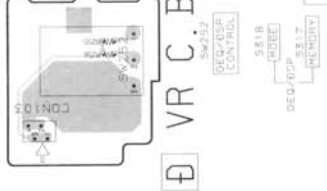
C CD SW C.B



B FRONT C.B



D VR C.B



REFERENCE NAME LIST

ELECTRICAL SECTION

DESCRIPTION	REFERENCE NAME
ANT	ANTENNAS
C-	CHIP
C-CAP	CAP, CHIP
C-CAP TN	CAP, CHIP TANTALUM
C-COIL	COIL, CHIP
C-DI	DIODE, CHIP
C-DIODE	DIODE, CHIP
C-FET	FET, CHIP
C-FOTR	FILTER, CHIP
C-JACK	JACK, CHIP
C-LED	LED, CHIP
C-RES	RES, CHIP
C-SFR	SFR, CHIP
C-SLIDE SW	SLIDE SWITCH, CHIP
C-SW	SWITCH, CHIP
C-TR	TRANSISTOR, CHIP
C-VR	VOLUME, CHIP
C-ZENER	ZENER, CHIP
CAP, CER	CAP, CERA-SOL
CAP, E	CAP, ELECT
CAP, M/F	CAP, FILM
CAP, TC	CAP, CERA-SOL
CAP, TC-U	CAP, CERA-SOL SS
CAP, TN	CAP, TANTALUM
CERA FIL	FILTER, CERAMIC
CF	FILTER, CERAMIC
DL	DELAY LINE
E/CAP	CAP, ELECT
FILT	FILTER
FLTR	FILTER
FUSE RES	RES, FUSE
MOT	MOTOR
P-DIODE	PHOTO DIODE
P-SNSR	PHOTO SENSER
P-TR	PHOTO TRANSISTOR
POLY VARI	VARIABLE CAPACITOR
PPCAP	CAP, PP
PT	POWER TRANSFORMER
PTR, RES	PTR, MELF
RC	REMOTE CONTROLLER
RES NF	RES, NON-FLAMMABLE
RESO	RESONATOR
SHLD	SHIELD
SOL	SOLENOID
SPKR	SPEAKER
SW, LVR	SWITCH, LEVER
SW, RTRY	SWITCH, ROTARY
SW, SL	SWITCH, SLIDE
TC CAP	CAP, CERA-SOL
THMS	THERMISTOR
TR	TRANSISTOR
TRIMER	CAP, TRIMMER
TUN-CAP	VARIABLE CAPACITOR
VIB, CER	RESONATOR, CERAMIC
VIB, XTAL	RESONATOR, CRYSTAL
VR	VOLUME
ZENER	DIODE, ZENER

MECHANICAL SECTION

DESCRIPTION	REFERENCE NAME
ADHESHIVE	SHEET ADHESHIVE
AZ	AZIMUTH
BAR-ANT	BAR-ANTENNA
BAT	BATTERY
BATT	BATTERY
BRG	BEARING
BTN	BUTTON
CAB	CABINET
CASS	CASSETTE
CHAS	CHASSIS
CLR	COLLAR
CONT	CONTROL
CRSR	CURSOR
CU	CUSHION
CUSH	CUSHION
DIR	DIRECTION
DUBB	DUBBING
FL	FRONT LOADING
FLY-WHL	FLYWHEEL
FR	FRONT
FUN	FUNCTION
G-CU	G-CUSHION
HDL	HANDOL
HIMERON	CLOTH
HINGE, BAT	HINGE, BATTERY
HLDR	HOLDER
HT-SINK	HEAT SINK
IB	INSTRUCTION BOOKLET
IDLE	IDLER
IND, L-R	INDICATOR, L-R
KEY, CONT	KEY, CONTROL
KEY, PRGM	KEY, PROGRAM
KNOB, SL	KNOB, SLIDE
LBL	LABEL
LID, BATT	LID, BATTERY
LID, CASS	LID, CASSETTE
LVR	LEVER
P-SP	P-SPRING
PANEL, CONT	PANEL, CONTROL
PANEL, FR	PANEL, FRONT
PRGM	PROGRAM
PULLY, LOAD MO	PULLY, LOAD MOTOR
RBN	RIBBON
S-	SPECIAL
SEG	SEGMENT
SH	SHEET
SHLD-SH	SHIELD-SHEET
SL	SLIDE
SP	SPRING
SP-SCREW	SPECIAL-SCREW
SPACER, BAT	SPACER, BATTERY
SPR	SPRING
SPR-P	P-SPRING
SPR-PC-PUSH	P-SPRING, C-PUSH
T-SP	T-SPRING
TERM	TERMINAL
TRIG	TRIGGER
TUN	TUNING
VOL	VOLUME
W	WASHER
WHL	WHEEL
WORM-WHL	WORM-WHEEL

サービス技術ニュース	
番号	連絡内容
G- -	
G- -	
G- -	

アイワ株式会社
AIWA CO.,LTD.

9301978

Tokyo Japan