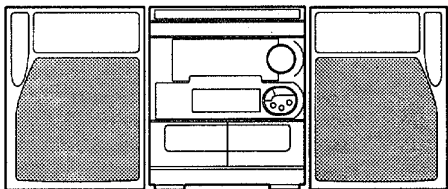


# aiwa



## NSX-K350



COMPACT DISC STEREO  
CASSETTE RECEIVER

- BASIC TAPE MECHANISM : 2ZM-3MK2 YPR4
- BASIC CD MECHANISM : 4ZG-1VSGD

• TYPE: HE

## SUPPLEMENT

SYSTEM	CD - CASSEIVER	SPEAKER
NSX-K350	CX-NK350	SX-FNS36

- This Service manual contains information about the difference between NSX-K350 (HR) and NSX-K350 (HE). If requiring the other information, see Service Manual of NSX-K350 (HC,HR). (S/M Code No. 09-977-194-6FE).
- If requiring information about the CD mechanism, see Service Manual of 4ZG-1, S/M Code No. 09-977-206-10T.

# SPECIFICATIONS

## <FM Tuner section>

**Tuning range** 87.5 MHz to 108 MHz  
**Usable sensitivity (IHF)** 13.2 dBf  
**Antenna terminals** 75 ohms (unbalanced)

## <MW Tuner section>

**Tuning range** 531 kHz to 1602 kHz (9 kHz step)  
 530 kHz to 1710 kHz (10 kHz step)  
**Usable sensitivity** 350  $\mu$ V/m  
**Antenna** Loop antenna

## <SW Tuner section>

**Tuning range** 5.900 MHz to 17.900 MHz  
**Antenna** Wire antenna

## <Amplifier section>

**Power output** Rated : 68 W + 68 W ( 6 ohms, THD 1 %, 1kHz)  
 Reference : 85 W + 85 W ( 6 ohms, THD 10 %, 1kHz)  
**Total harmonic distortion** 0.05 % (70 W, 1 kHz, 6 ohms DIN AUDIO)  
**Inputs** VIDEO/AUX : 150 mV (adjustable)  
 MD: 150 mV (adjustable)  
 MIC1, MIC2 : 1 mV (10 kohms)  
**Outputs** LINE OUT : 200mV  
 SUPER WOOFER : 2.3 V  
 VIDEO OUT : 1.0 Vp-p (75 ohms)  
 SPEAKERS : accept speakers of 6 ohms or more  
 SURROUND SPEAKERS : accept speakers of 16 ohms or more  
 PHONES (stereo jack) : accepts headphones of 32 ohms or more

## <Cassette deck section>

**Track format** 4 tracks, 2 channels stereo  
**Frequency response** 50 Hz -15000 Hz  
**Recording system** AC bias  
**Heads** Deck 1 : Playback head x1  
 Deck 2 : Recording/playback/erase head x 1

## <Compact disc player section>

**Laser** Semiconductor laser ( $\lambda = 780$  nm)  
**D-A converter** 1 bit dual  
**Signal-to-noise ratio** 85 dB (1 kHz, 0 dB)  
**Harmonic distortion** 0.05% (1 kHz, 0 dB)  
**Wow and flutter** Unmeasurable  
**Video signal** NTSC/PAL color format (selectable)  
**Video data** MPEG 1  
**Audio data** MPEG 1, LAYER 2

## <Speaker system SX-FNS36>

**Cabinet type** 2 way, bass reflex with surround speaker (magnetic shielded type)  
**Speakers** Woofer : 140 mm cone type  
 Tweeter : 60 mm cone type  
 Surround speaker : 60 mm cone type  
**Impedance** Front speaker : 6 ohms  
 Surround speaker : 16 ohms  
**Output sound pressure level** 87 dB/W/m  
**Dimensions (W x H x D)** 240 x 304 x 253 mm  
**Weight** 3.2 kg

## <General>

**Power requirements** 120 V/ 220 - 230 V/240 V AC, switchable 50/60 Hz  
**Power consumption** 115 W  
**Dimensions of main unit (W x H x D)** 260 x 309 x 346 mm  
**Weight of main unit** 6.7 kg

• Design and specifications are subject to change without notice.

# ELECTRICAL MAIN PARTS LIST

If can't understand for Description please kindly refer to "REFERENCE NAME LIST".

REF. NO.	PART NO.	KANRI NO.	DESCRIPTION
IC			
	87-NH4-610-110		IC, LC866548A-5E60
	87-A20-783-040		IC, BA7762AFS
DIODE			
	87-070-136-080		ZENER, MTZJ5.6B
MAIN C.B			
J253	87-A60-401-010		JACK PIN 3P B/R/W HSP-243V16
J601	87-A60-402-010		JACK PIN 6P R/W HSP-246V30
J801	87-033-239-010		TERMINAL, HSP-154V-2

## MECHANICAL PARTS LIST 1 / 1

If can't understand for Description please kindly refer to "REFERENCE NAME LIST".

REF. NO.	PART NO.	KANRI NO.	DESCRIPTION
16	87-NF8-220-010		DMPR, 150
23	87-NH7-021-010		CABI, REAR HEJSTNM

## ACCESSORIES / PACKAGE LIST

If can't understand for Description please kindly refer to "REFERENCE NAME LIST".

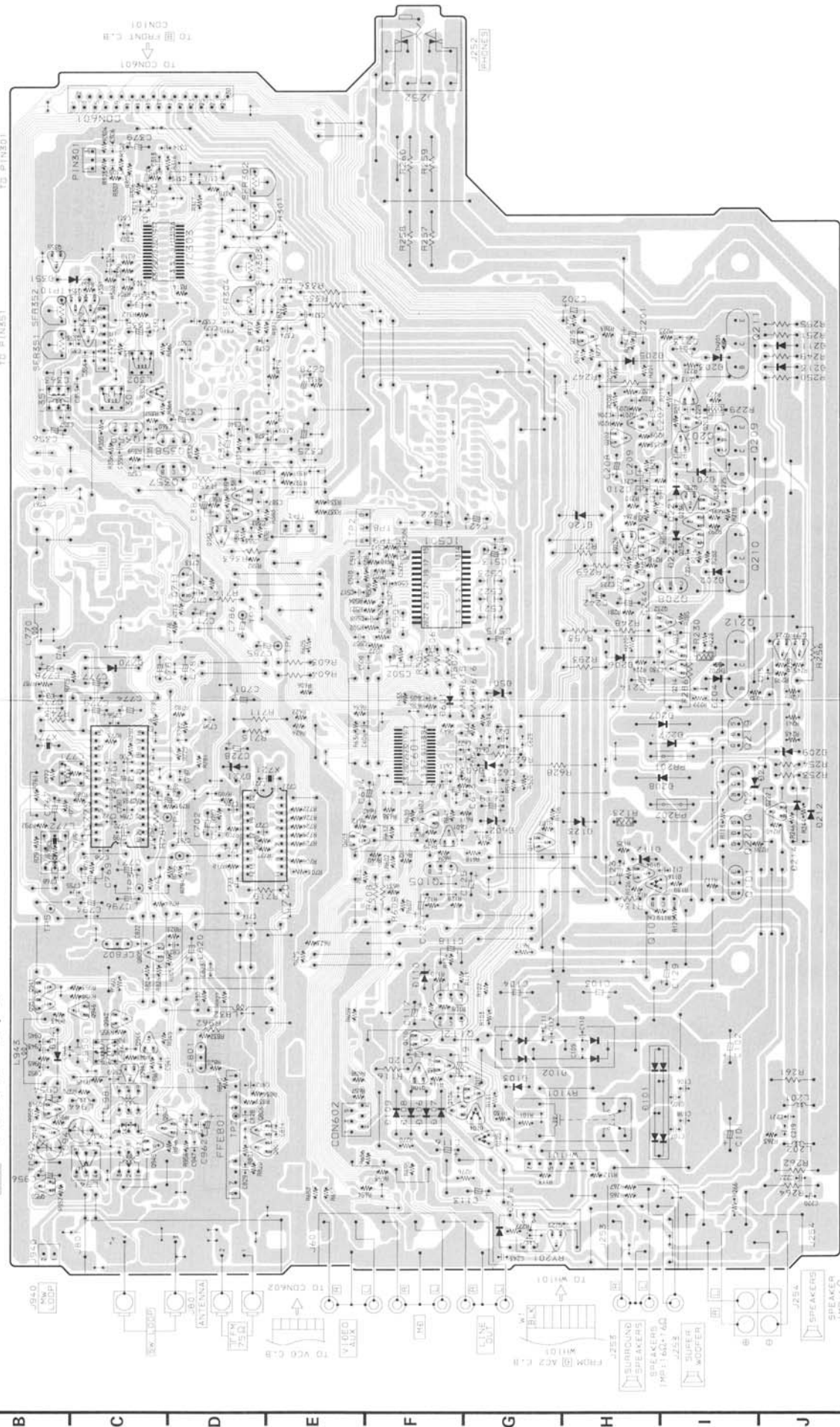
REF. NO.	PART NO.	KANRI NO.	DESCRIPTION
1	87-NH7-912-019		IB, H(KIT) PHIL

# A MAIN C.B

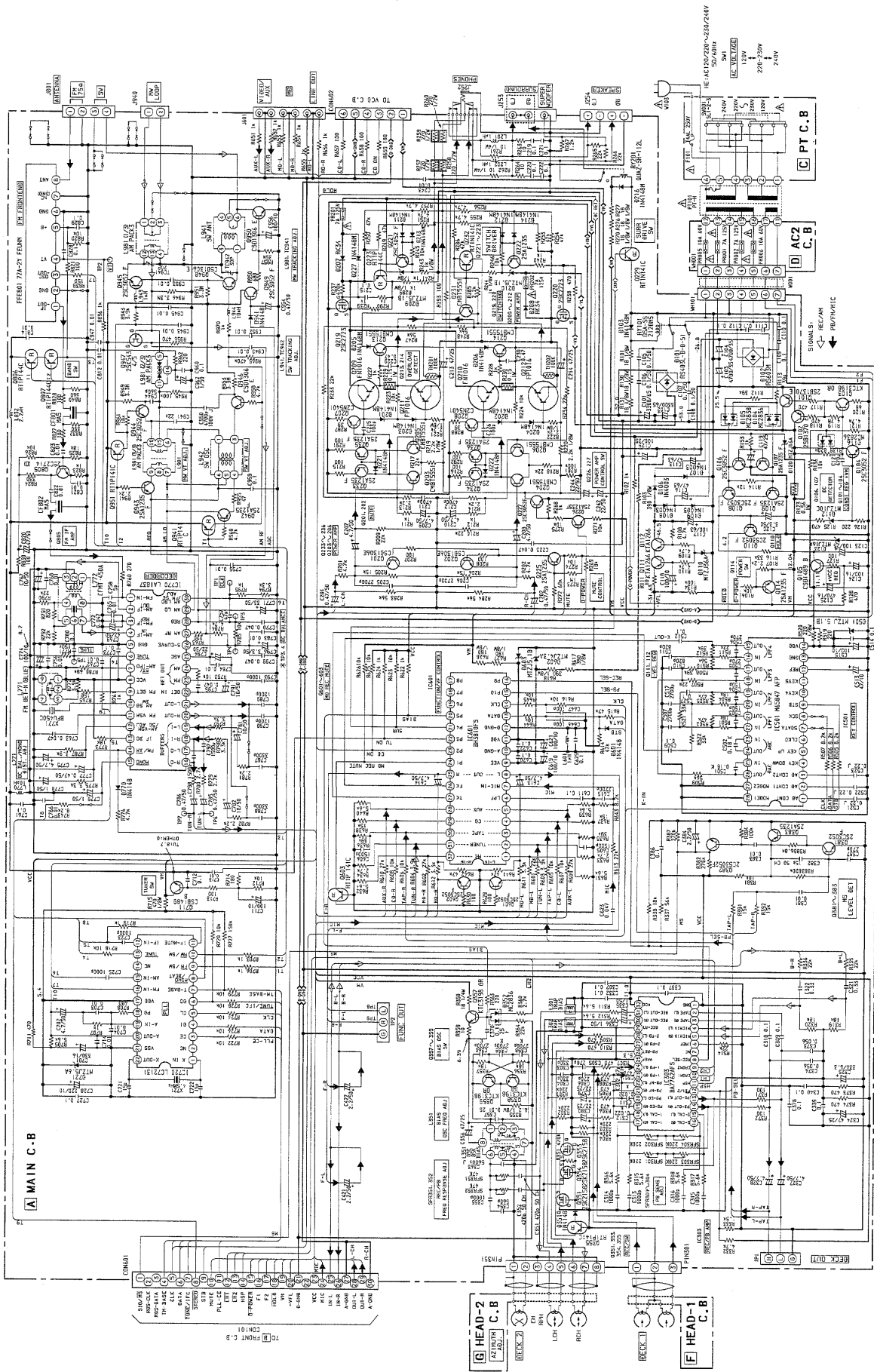
FROM HEAD-2 C.B  
CONSOLE

TO PINS01

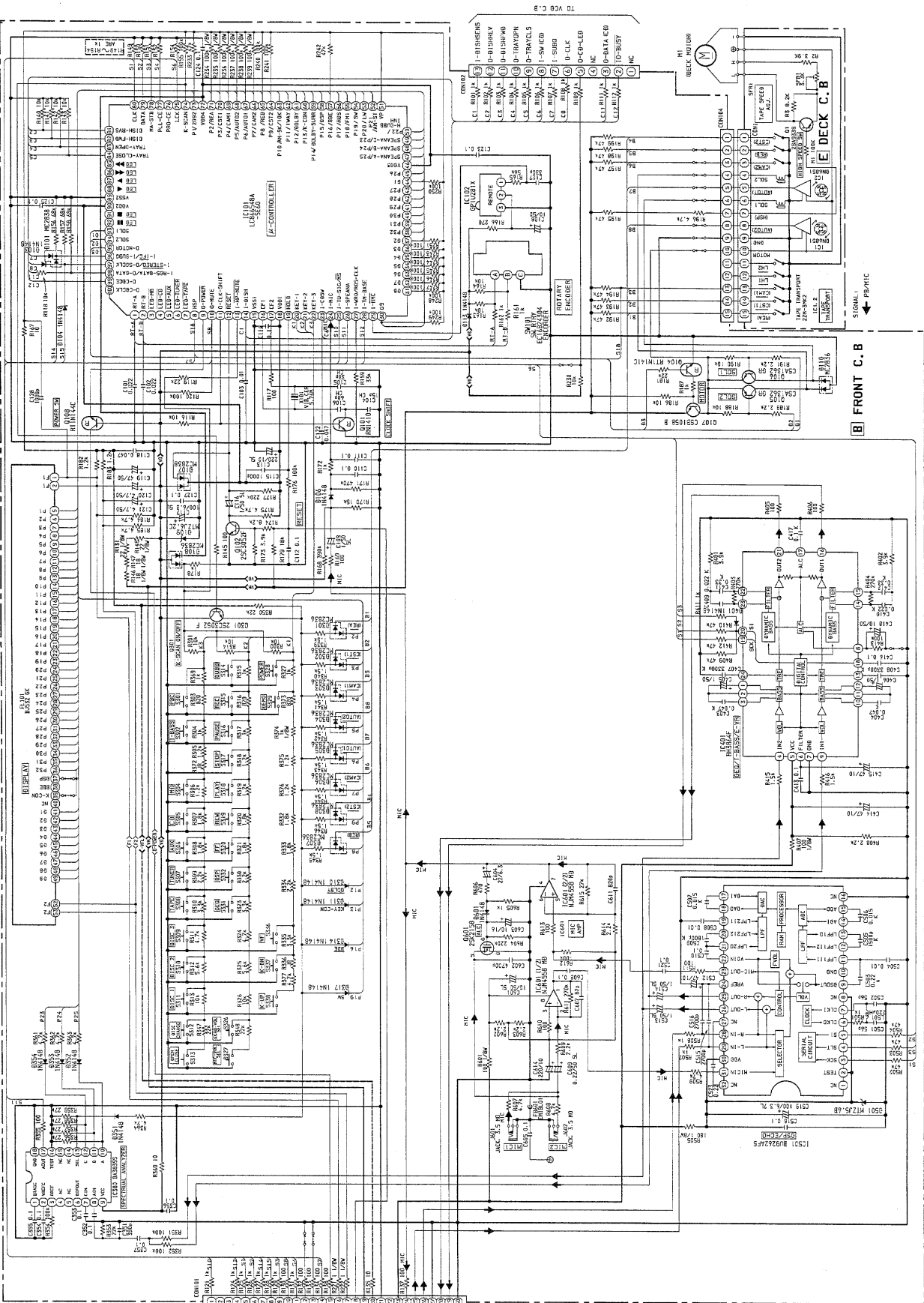
TO CONN01  
TO FRONT C.B



SCHEMATIC DIAGRAM - 1 (MAIN)



SCHEMATIC DIAGRAM - 2 (FRONT)







# REFERENCE NAME LIST

## ELECTRICAL SECTION

DESCRIPTION	REFERENCE NAME
ANT	ANTENNAS
C-	CHIP
C-CAP	CAP, CHIP
C-CAP TN	CAP, CHIP TANTALUM
C-COIL	COIL, CHIP
C-DI	DIODE, CHIP
C-DIODE	DIODE, CHIP
C-FET	FET, CHIP
C-FOTR	FILTER, CHIP
C-JACK	JACK, CHIP
C-LED	LED, CHIP
C-RES	RES, CHIP
C-SFR	SFR, CHIP
C-SLIDE SW	SLIDE SWITCH, CHIP
C-SW	SWITCH, CHIP
C-TR	TRANSISTOR, CHIP
C-VR	VOLUME, CHIP
C-ZENER	ZENER, CHIP
CAP, CER	CAP, CERA-SOL
CAP, E	CAP, ELECT
CAP, M/F	CAP, FILM
CAP, TC	CAP, CERA-SOL
CAP, TC-U	CAP, CERA-SOL SS
CAP, TN	CAP, TANTALUM
CERA FIL	FILTER, CERAMIC
CF	FILTER, CERAMIC
DL	DELAY LINE
E/CAP	CAP, ELECT
FILT	FILTER
FLTR	FILTER
FUSE RES	RES, FUSE
MOT	MOTOR
P-DIODE	PHOTO DIODE
P-SNSR	PHOTO SENSER
P-TR	PHOTO TRANSISTOR
POLY VARI	VARIABLE CAPACITOR
PPCAP	CAP, PP
PT	POWER TRANSFORMER
PTR, RES	PTR, MELF
RC	REMOTE CONTROLLER
RES NF	RES, NON-FLAMMABLE
RESO	RESONATOR
SHLD	SHIELD
SOL	SOLENOID
SPKR	SPEAKER
SW, LVR	SWITCH, LEVER
SW, RTRY	SWITCH, ROTARY
SW, SL	SWITCH, SLIDE
TC CAP	CAP, CERA-SOL
THMS	THERMISTOR
TR	TRANSISTOR
TRIMER	CAP, TRIMMER
TUN-CAP	VARIABLE CAPACITOR
VIB, CER	RESONATOR, CERAMIC
VIB, XTAL	RESONATOR, CRYSTAL
VR	VOLUME
ZENER	DIODE, ZENER

## MECHANICAL SECTION

DESCRIPTION	REFERENCE NAME
ADHESHIVE	SHEET ADHESHIVE
AZ	AZIMUTH
BAR-ANT	BAR-ANTENNA
BAT	BATTERY
BATT	BATTERY
BRG	BEARING
BTN	BUTTON
CAB	CABINET
CASS	CASSETTE
CHAS	CHASSIS
CLR	COLLAR
CONT	CONTROL
CRSR	CURSOR
CU	CUSHION
CUSH	CUSHION
DIR	DIRECTION
DUBB	DUBBING
FL	FRONT LOADING
FLY-WHL	FLYWHEEL
FR	FRONT
FUN	FUNCTION
G-CU	G-CUSHION
HDL	HANDOL
HIMERON	CLOTH
HINGE, BAT	HINGE, BATTERY
HLDR	HOLDER
HT-SINK	HEAT SINK
IB	INSTRUCTION BOOKLET
IDLE	IDLER
IND, L-R	INDICATOR, L-R
KEY, CONT	KEY, CONTROL
KEY, PRGM	KEY, PROGRAM
KNOB, SL	KNOB, SLIDE
LBL	LABEL
LID, BATT	LID, BATTERY
LID, CASS	LID, CASSETTE
LVR	LEVER
P-SP	P-SPRING
PANEL, CONT	PANEL, CONTROL
PANEL, FR	PANEL, FRONT
PRGM	PROGRAM
PULLY, LOAD MO	PULLY, LOAD MOTOR
RBN	RIBBON
S-	SPECIAL
SEG	SEGMENT
SH	SHEET
SHLD-SH	SHIELD-SHEET
SL	SLIDE
SP	SPRING
SP-SCREW	SPECIAL-SCREW
SPACER, BAT	SPACER, BATTERY
SPR	SPRING
SPR-P	P-SPRING
SPR-PC-PUSH	P-SPRING, C-PUSH
T-SP	T-SPRING
TERM	TERMINAL
TRIG	TRIGGER
TUN	TUNING
VOL	VOLUME
W	WASHER
WHL	WHEEL
WORM-WHL	WORM-WHEEL

サービス技術ニュース	
番号	連絡内容
G- -	
G- -	
G- -	

**アイワ株式会社**  
**AIWA CO.,LTD.**

9301946

Tokyo Japan