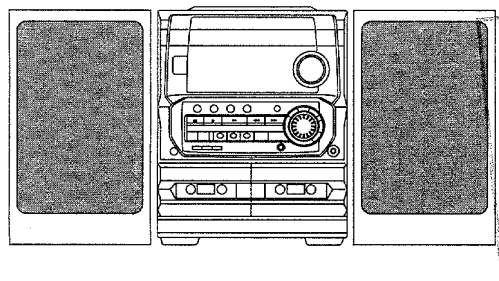


aiwa



NSX-K386



COMPACT DISC
STEREO CASSETTE RECEIVER

- BASIC TAPE MECHANISM: 6ZM-3 PR2NM
- BASIC CD MECHANISM: 4ZG-1 VOS1RDSHM
- TYPE: HR

SUPPLEMENT

SYSTEM	CD CASSEIVER	SPEAKER	REMOTE CONTROLLER
NSX-K386	CX-NK386	SX-NS552	RC UNIT,ZAS07

- This Service Manual contains the information about the differences between NSX-K386(HR) and NSX-K380(HR). If requiring the other information, see Service Manual of NSX-K380(HR), (S/M Code No. 09-994-407-7R1).
- This Service Manual is the "Revision Publishing" and replaces "Simple Manual", S/M Code No.09-996-407-7T2.
- If requiring information about the CD mechanism, see Service Manual of 4ZG-1. (S/M Code No.09-985-249-8S2)

ACCESSORIES / PACKAGE LIST

If can't understand for Description please kindly refer to "REFERENCE NAME LIST".

REF. NO.	PART NO.	KANRI NO.	DESCRIPTION
1	8Z-NH9-912-010		IB,H(EC-H)M-386
2	87-043-115-010		ANT,FEEDER FM
△ 3	87-A91-017-010		PLUG, CONVERSION JT-0476
4	8Z-NH8-702-010		RC UNIT,ZAS07
5	87-A90-054-010		ANT LOOP AM-CON C
6	87-050-103-010		CORD,PIN 1PY1.5M

SPECIFICATIONS

<FM Tuner section>

Tuning range 87.5 MHz to 108 MHz
Usable sensitivity (IHF) 13.2 dBf
Antenna terminals 75 ohms (unbalanced)

<MW Tuner section>

Tuning range 531 kHz to 1602 kHz (9 kHz step)
 530 kHz to 1710 kHz (10 kHz step)
Usable sensitivity 350 μ V/m
Antenna Loop antenna

<SW Tuner section>

Tuning range 5.900 MHz to 17.900 MHz
Usable sensitivity 40 μ V (IEC)
Antenna Wire antenna

<Amplifier section>

Power output Rated : 24 W + 24 W
 (6 ohms, T.H.D. 1 %, 1 kHz)
 Reference: 30 W + 30 W
 (6 ohms, T.H.D. 10 %, 1 kHz)
Total harmonic distortion 0.05 % (15 W, 1 kHz, 6 ohms,
 DIN AUDIO)
Inputs VIDEO/AUX : 500 mV
 MIC : 1.0 mV (10 kohms)
Outputs VIDEO OUT : 1.0 Vp-p (75 ohms)
 SPEAKERS: accept speakers of 6
 ohms or more
 PHONES (stereo jack) :
 accepts headphones of 32 ohms
 or more

<Cassette deck section>

Track format 4 tracks, 2 channels stereo
Frequency response 50 Hz - 10000 Hz
Recording system AC bias
Heads Deck 1 : Playback head x 1
 Deck 2 : Recording/playback head
 x 1, erase head x 1

<Compact disc player section>

Laser Semiconductor laser ($\lambda = 780$ nm)
D-A converter 1 bit dual
Signal-to-noise ratio 85 dB (1 kHz, 0 dB)
Harmonic distortion 0.05% (1 kHz, 0 dB)
Wow and flutter Unmeasurable
Video signal NTSC/PAL color format (selectable)
Video data MPEG 1
Audio data MPEG 1, LAYER 2

<Speaker system SX-NS552>

Cabinet type 3 way, bass reflex (magnetic shielded
 type)
Speakers Woofer : 140 mm cone type
 Tweeter : 50 mm cone type
 Super tweeter : 20 mm ceramic type
Impedance 6 ohms
Output sound pressure level 87 dB/W/m
Dimensions (W x H x D) 234 x 324 x 270 mm
Weight 3.8 kg

<General>

Power requirements 120 V/ 220 - 230 V/ 240 V AC
 switchable, 50 / 60 Hz
Power consumption 85 W
Dimensions of main unit 260 x 330 x 350 mm
 (W x H x D)
Weight of main unit 6.0 kg

• Design and specifications are subject to change without notice.

ELECTRICAL MAIN PARTS LIST

If can't understand for Description please kindly refer to "REFERENCE NAME LIST".

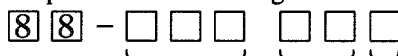
REF. NO.	PART NO.	KANRI NO.	DESCRIPTION	REF. NO.	PART NO.	KANRI NO.	DESCRIPTION
IC				C218	87-A10-304-080		CAP,M 0.056-50 J
	87-020-454-010	IC, DN6851		C219	87-010-544-080		CAP, ELECT 0.1-50V
	87-A20-913-010	IC, LA1837NL		C220	87-010-544-080		CAP, ELECT 0.1-50V
	87-070-127-110	IC, LC72131 D		C229	87-018-123-080		CAP, CER 220P-50V
	8Z-NH9-611-010	IC, M38B57MCH-E224FP		C230	87-018-123-080		CAP, CER 220P-50V
	87-A20-715-010	IC, M62439SP		C235	87-A11-148-080		CAP, TC U 0.1-50 Z F
				C236	87-A11-148-080		CAP, TC U 0.1-50 Z F
	87-A21-118-040	IC, M65855FP		C237	87-A11-155-080		CAP, TC U 0.01-16 Z F
	87-A21-218-010	IC, NJL64H380A		C301	87-018-131-080		CAP, CER 1000P-50V
	87-017-889-010	IC, NJM4558LD		C302	87-018-131-080		CAP, CER 1000P-50V
				C303	87-018-131-080		CAP, CER 1000P-50V
TRANSISTOR				C304	87-018-131-080		CAP, CER 1000P-50V
	87-A30-255-010	TR, 2SB1342		C307	87-010-263-080		CAP, ELECT 100-10V
	89-213-702-010	TR, 2SB1370E(1.8W)		C308	87-010-263-080		CAP, ELECT 100-10V
	87-A30-256-010	TR, 2SD1933		C311	87-A10-305-080		CAP, M 0.068-50 J
	87-A30-190-080	TR, CC5551		C312	87-A10-305-080		CAP, M 0.068-50 J
	87-A30-318-080	TR, CSA952K		C315	87-010-374-080		CAP, ELECT 47-10V
				C317	87-010-546-080		CAP, ELECT 0.33-50V
	87-A30-240-080	TR, CSA1585BC		C318	87-010-546-080		CAP, ELECT 0.33-50V
	87-A30-164-080	TR, CSC2001K		C326	87-018-205-080		CAP, CERA-SOL 0.022
	87-A30-234-080	TR, CSC4115BC					
	87-026-269-080	TR, DTA114ES		C360	87-010-401-080		CAP, ELECT 1-50V
	87-026-214-080	TR, DTA114YS (0.3W)		C361	87-010-374-080		CAP, ELECT 47-10V
				C399	87-018-127-080		CAP, CER 470P-50V
	87-026-219-080	TR, DTA144ES (0.3W)		C401	87-010-544-080		CAP, ELECT 0.1-50V
	87-026-245-080	TR, DTC114ES		C402	87-010-544-080		CAP, ELECT 0.1-50V
	87-026-215-080	TR, DTC114YS					
	87-026-287-080	TR, DTC143ES		C403	87-018-118-080		CAP, TC-U 82P-50 B
	87-026-218-080	TR, DTC144ES (0.2W)		C404	87-018-118-080		CAP, TC-U 82P-50 B
				C411	87-010-405-080		CAP, ELECT 10-50V
	87-026-609-080	TR, KTA1266GR		C412	87-010-405-080		CAP, ELECT 10-50V
	87-026-610-080	TR, KTC3198GR		C452	87-010-382-080		CAP, ELECT 22-25V
	87-A30-091-080	FET, 2SJ460					
	87-A30-092-080	FET, 2SK439 (E/F)		C457	88-708-730-810		CAP, M 5600P-100 J
	87-A30-090-080	FET, 2SK2541		C458	87-018-131-080		CAP, CER 1000P-50V
				C459	87-018-128-080		CAP, CERA-SOL SS 560P
DIODE				C461	87-018-126-080		CAP, TC-U 390P-50 B
				C462	87-018-126-080		CAP, TC-U 390P-50 B
	87-070-274-080	DIODE, 1N4003 SEM		C601	87-018-195-080		CAP, CER 1200P-16V
	87-020-465-080	DIODE, 1SS133		C602	87-018-195-080		CAP, CER 1200P-16V
	87-A40-455-080	DIODE, RL203 GW		C611	87-010-545-080		CAP, ELECT 0.22-50V
	87-A40-466-080	ZENER, MTZJ2.7A		C612	87-010-545-080		CAP, ELECT 0.22-50V
	87-A40-002-080	ZENER, MTZJ5.1C		C613	87-010-545-080		CAP, ELECT 0.22-50V
	87-017-931-080	ZENER, MTZJ5.6B		C614	87-010-545-080		CAP, ELECT 0.22-50V
	87-A40-509-080	ZENER, MTZJ6.8C		C615	87-018-104-080		CAP, TC-U 10P-50 SL
	87-A40-345-080	ZENER, MTZJ10C		C616	87-010-260-080		CAP, ELECT 47-25V
	87-A40-336-080	ZENER, MTZJ27D T-72		C617	87-010-260-080		CAP, ELECT 47-25V
				C701	87-010-404-080		CAP, ELECT 4.7-50V
MAIN C.B.				C702	87-A11-155-080		CAP, TC U 0.01-16 Z F
				C703	87-A11-155-080		CAP, TC U 0.01-16 Z F
C101	87-A10-520-090	CAP, E 3300-35 M SMG		C704	87-018-131-080		CAP, CER 1000P-50V
C103	87-016-051-090	CAP, E 2200-35 SMG		C705	87-018-131-080		CAP, CER 1000P-50V
C105	87-018-127-080	CAP, CER 470P-50V		C706	87-018-131-080		CAP, CER 1000P-50V
C106	87-010-260-080	CAP, ELECT 47-25 M 11L					
C107	87-010-384-080	CAP, ELECT 100-25V		C707	87-010-112-080		CAP, ELECT 100-16V
				C708	87-A11-144-080		CAP, TC U 0.1-50 K B
C108	87-010-381-080	CAP, ELECT 330-16V		C709	87-010-248-080		CAP, ELECT 220-10V
C111	87-010-430-080	CAP, ELECT 100-63		C710	87-010-112-080		CAP, ELECT 100-16V
C112	87-010-263-080	CAP, ELECT 100-10V		C712	87-018-149-080		CAP, TC-U 15P-50 CH
C113	87-010-403-080	CAP, ELECT 3.3-50V					
C114	87-010-374-080	CAP, ELECT 47-10V		C713	87-018-149-080		CAP, TC-U 15P-50 CH
				C714	87-010-112-080		CAP, ELECT 100-16V
C115	87-A10-303-080	CAP, M 0.047-50 J		C715	87-018-119-080		CAP, CER 100P-50V
C116	87-A10-303-080	CAP, M 0.047-50 J		C746	87-A11-155-080		CAP, TC U 0.01-16 Z F
C122	87-010-408-080	CAP, ELECT 47-50V		C751	87-018-131-080		CAP, TC U 1000P-50 K B UP050
C123	87-010-408-080	CAP, ELECT 47-50V					
C152	87-010-394-080	CAP ELECT220-35V		C753	87-010-408-080		CAP, ELECT 47-50V
				C755	87-A11-144-080		CAP, TC U 0.1-50 K B
C207	87-010-546-080	CAP, ELECT 0.33-50V		C756	87-A11-155-080		CAP, TC U 0.01-16 Z F
C208	87-010-546-080	CAP, ELECT 0.33-50V		C757	87-A11-155-080		CAP, TC U 0.01-16 Z F
C209	87-A11-154-080	CAP, TC U 4700P-16 Z F		C758	87-010-112-080		CAP, ELECT 100-16V
C210	87-A11-154-080	CAP, TC U 4700P-16 Z F					
C211	87-010-403-080	CAP, ELECT 3.3-50V		C761	87-010-404-080		CAP, ELECT 4.7-50V
				C762	87-010-400-080		CAP, ELECT 0.47-50V
C212	87-010-403-080	CAP, ELECT 3.3-50V		C763	87-010-401-080		CAP, ELECT 1-50V
C213	87-010-260-080	CAP, ELECT 47-25V		C764	87-010-401-080		CAP, ELECT 1-50V
C214	87-010-260-080	CAP, ELECT 47-25V		C765	87-018-115-080		CAP, CER 47P-50V
C217	87-A10-304-080	CAP, M 0.056-50 J					

REF. NO.	PART NO.	KANRI NO.	DESCRIPTION	REF. NO.	PART NO.	KANRI NO.	DESCRIPTION
FC701	88-911-201-110		FF-CABLE, 11P 1.25				
FL301	8Z-NF9-610-010		FL, SVA-10MS12				
J401	87-A60-651-010		JACK SW, TACT SKQNAB(N)				
L201	87-A50-434-010		COIL, CLK 4.19M(TOKO)				
LED601	87-A40-619-080		LED, SLR-56PT-TE7-W GRN				
LED602	87-A40-619-080		LED, SLR-56PT-TE7-W GRN				
LED604	87-A40-619-080		LED, SLR-56PT-TE7-W GRN				
LED605	87-A40-619-080		LED, SLR-56PT-TE7-W GRN				
LED608	87-A40-619-080		LED, SLR-56PT-TE7-W GRN				
LED609	87-A40-619-080		LED, SLR-56PT-TE7-W GRN				
S201	87-A90-535-010		SW, RTRY EC16B24304				
S202	87-A90-791-010		SW, RTRY EC16B12204 ENCODER				
S301	87-A90-164-080		SW, TACT SKQNAB(N)				
S302	87-A90-164-080		SW, TACT SKQNAB(N)				
S303	87-A90-164-080		SW, TACT SKQNAB(N)				
S304	87-A90-164-080		SW, TACT SKQNAB(N)				
S305	87-A90-164-080		SW, TACT SKQNAB(N)				
S306	87-A90-164-080		SW, TACT SKQNAB(N)				
S307	87-A90-164-080		SW, TACT SKQNAB(N)				
S309	87-A90-164-080		SW, TACT SKQNAB(N)				
S310	87-A90-164-080		SW, TACT SKQNAB(N)				
S311	87-A90-164-080		SW, TACT SKQNAB(N)				
S312	87-A90-164-080		SW, TACT SKQNAB(N)				
S313	87-A90-164-080		SW, TACT SKQNAB(N)				
S314	87-A90-164-080		SW, TACT SKQNAB(N)				
S315	87-A90-164-080		SW, TACT SKQNAB(N)				
S316	87-A90-164-080		SW, TACT SKQNAB(N)				
S317	87-A90-164-080		SW, TACT SKQNAB(N)				
S318	87-A90-164-080		SW, TACT SKQNAB(N)				
S319	87-A90-164-080		SW, TACT SKQNAB(N)				
S320	87-A90-164-080		SW, TACT SKQNAB(N)				
S321	87-A90-164-080		SW, TACT SKQNAB(N)				
S322	87-A90-164-080		SW, TACT SKQNAB(N)				
S323	87-A90-164-080		SW, TACT SKQNAB(N)				
S324	87-A90-164-080		SW, TACT SKQNAB(N)				
S325	87-A90-164-080		SW, TACT SKQNAB(N)				
S329	87-A90-164-080		SW, TACT SKQNAB(N)				
S330	87-A90-164-080		SW, TACT SKQNAB(N)				
VR401	86-NFA-607-010		VR, RTRY 10K15AX1				
				AC1 C.B.			
				△ F101	87-035-224-010		FUSE 1.6 AT
				△ FC101	87-033-147-010		FUSE CLAMP
				△ FC102	87-033-147-010		FUSE CLAMP
				△ PT101	88-NF9-610-010		PT, 8NF-9 HI-HR
				△ SW101	87-A90-165-010		SW, SL 1-2-3 SWS2301
				△ T101	87-A60-317-010		TERMINAL, 1P MSC
				△ T102	87-A60-317-010		TERMINAL, 1P MSC
				AC2 C.B.			
				△ PR101	87-026-681-080		PROTECTOR, 5A 60V 491
				△ PR102	87-026-681-080		PROTECTOR, 5A 60V 491
				WH101	87-A90-459-010		HLDR, WIRE 2.5-5P
				DECK C.B.			
				CON105	87-099-753-019		CONN, 11P 9604
				SFR1	87-024-581-019		SFR, 3.3K DIA 6H
				SOL1	82-ZM1-618-410		SOL ASSY, 27
				SOL2	82-ZM1-618-410		SOL ASSY, 27
				SW1	87-A90-248-019		SW, MICRO ESE11SH2CXQ
				SW2	87-A90-248-019		SW, MICRO ESE11SH2CXQ
				SW3	87-A90-248-019		SW, MICRO ESE11SH2CXQ
				SW4	87-A90-248-019		SW, MICRO ESE11SH2CXQ
				SW5	87-A90-248-019		SW, MICRO ESE11SH2CXQ
				W001	82-ZM3-601-019		RBN-CORD, 4P-75
				HEAD-1 C.B.			
				CON301	85-MA2-615-010		CONN, ASSY, 3P-PB

○チップ抵抗部品コード/CHIP RESISTOR PART CODE

チップ抵抗部品コードの成り立ち

Chip Resistor Part Coding

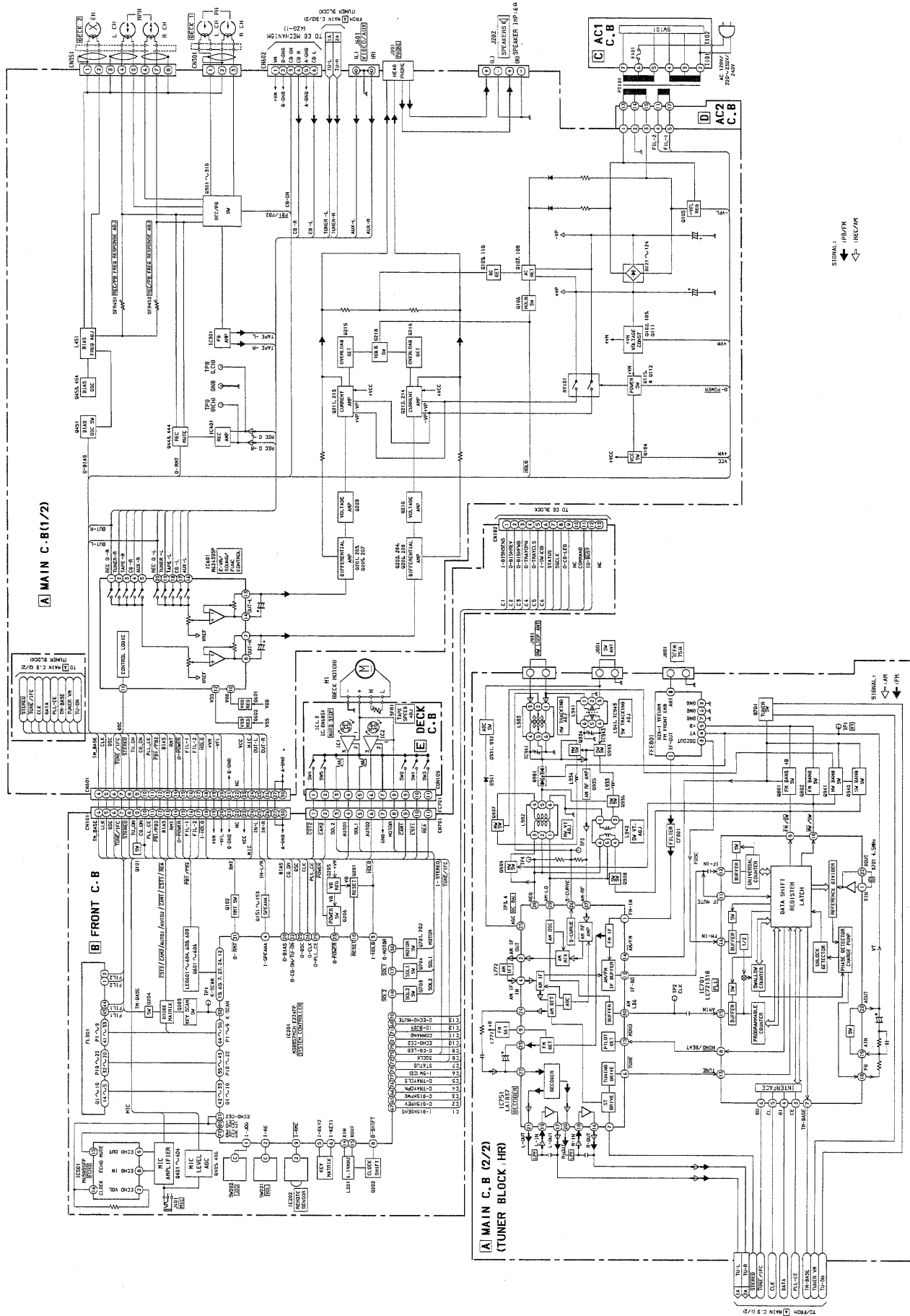


A
抵抗部品コード
Resistor Code

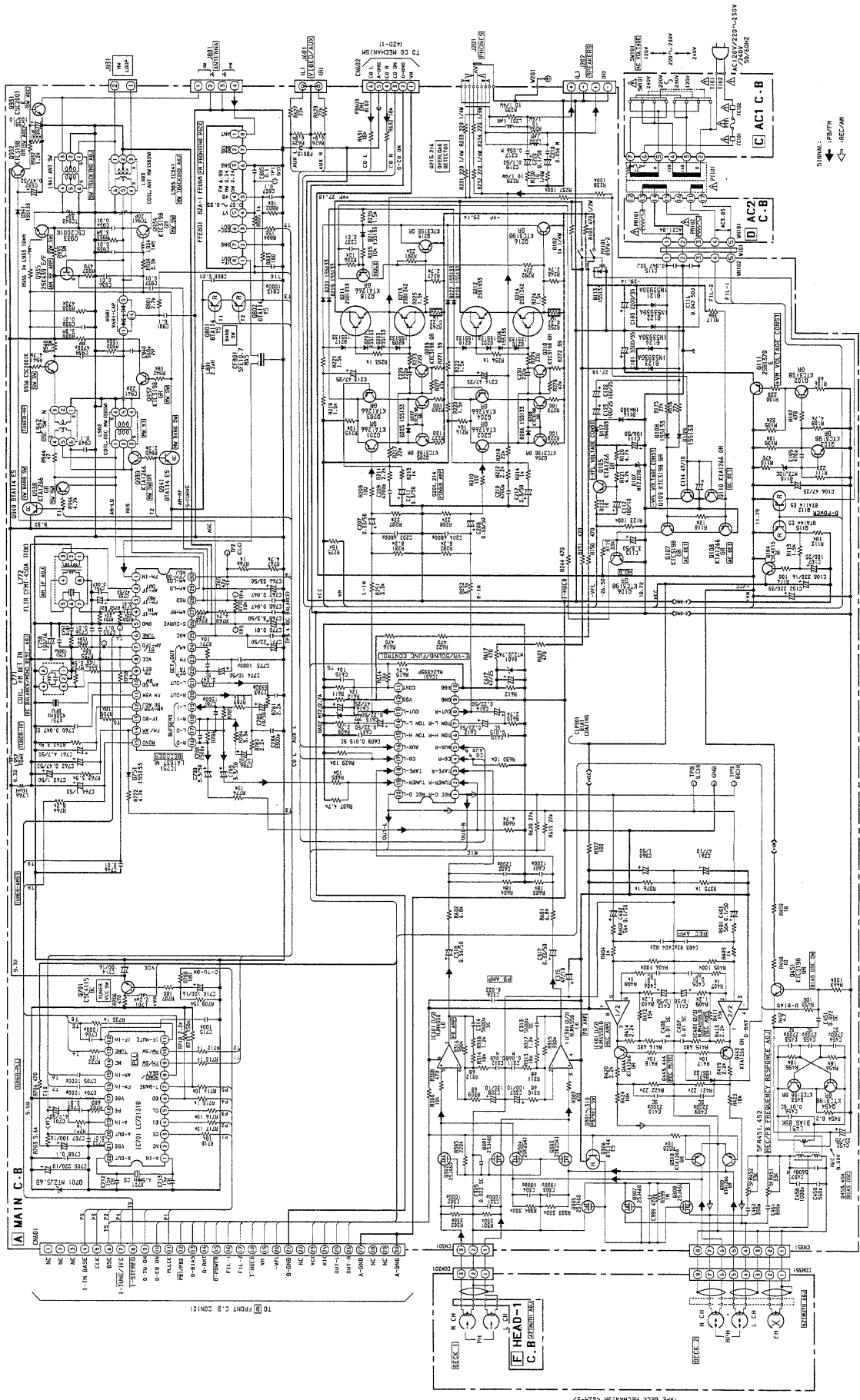
桁表示
Figure
抵抗値
Value of resistor

チップ抵抗
Chip resistor

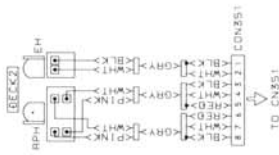
容量 Wattage	種類 Type	許容誤差 Tolerance	記号 Symbol	寸法/Dimensions (mm)			抵抗コード : A Resistor Code : A	
				外形/Form	L	W		t
1/16W	1005	±5%	CJ		1.0	0.5	0.35	104
1/16W	1608	±5%	CJ		1.6	0.8	0.45	108
1/10W	2125	±5%	CJ		2	1.25	0.45	118
1/8W	3216	±5%	CJ		3.2	1.6	0.55	128



SCHEMATIC DIAGRAM (MAIN)



1 2 3 4 5 6 7 8 9 10 11 12 13 14



A MAIN C.B

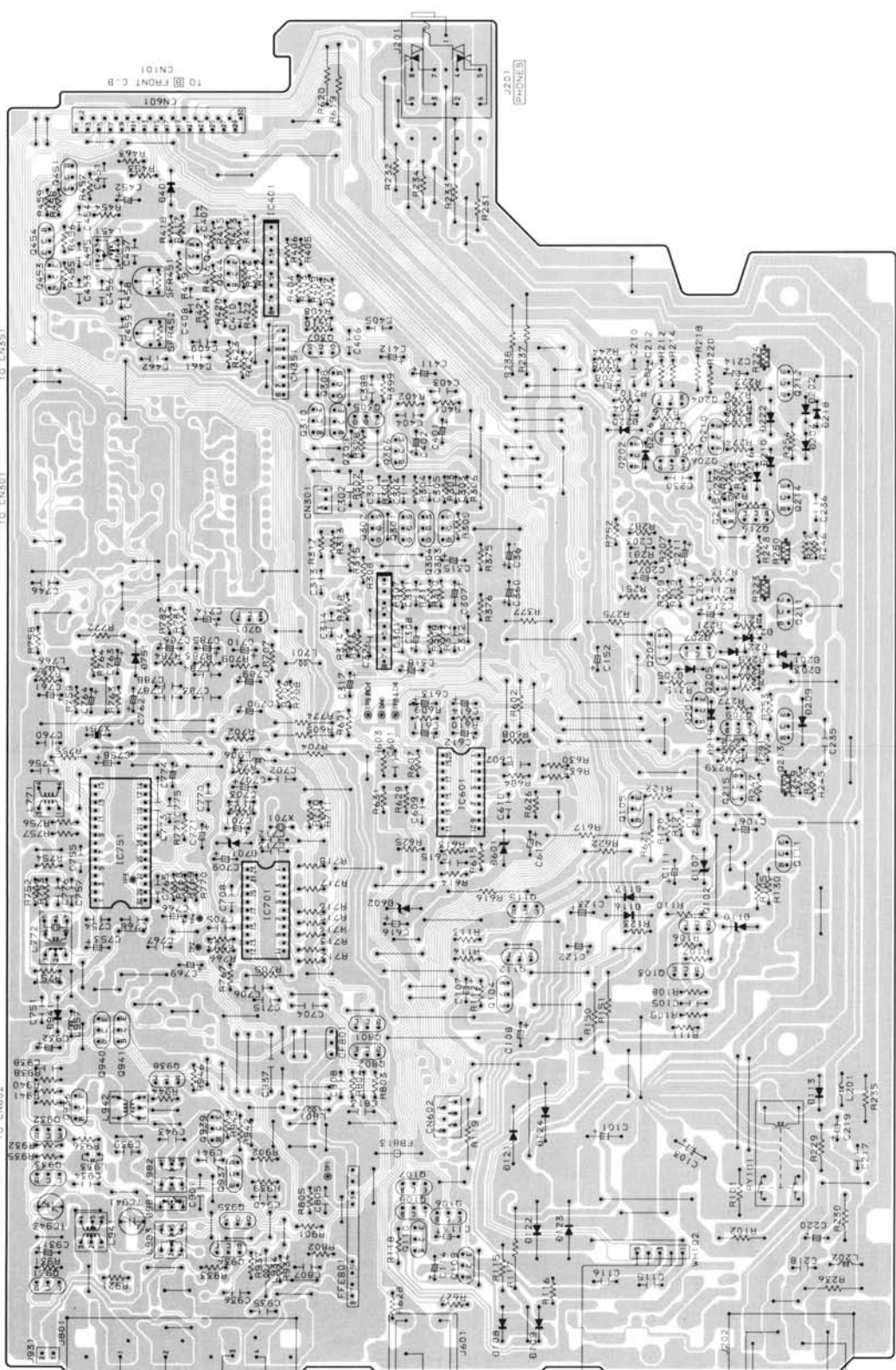
TO CD MECHANISM (AZ0-1)

FROM HEAD-1 C.B

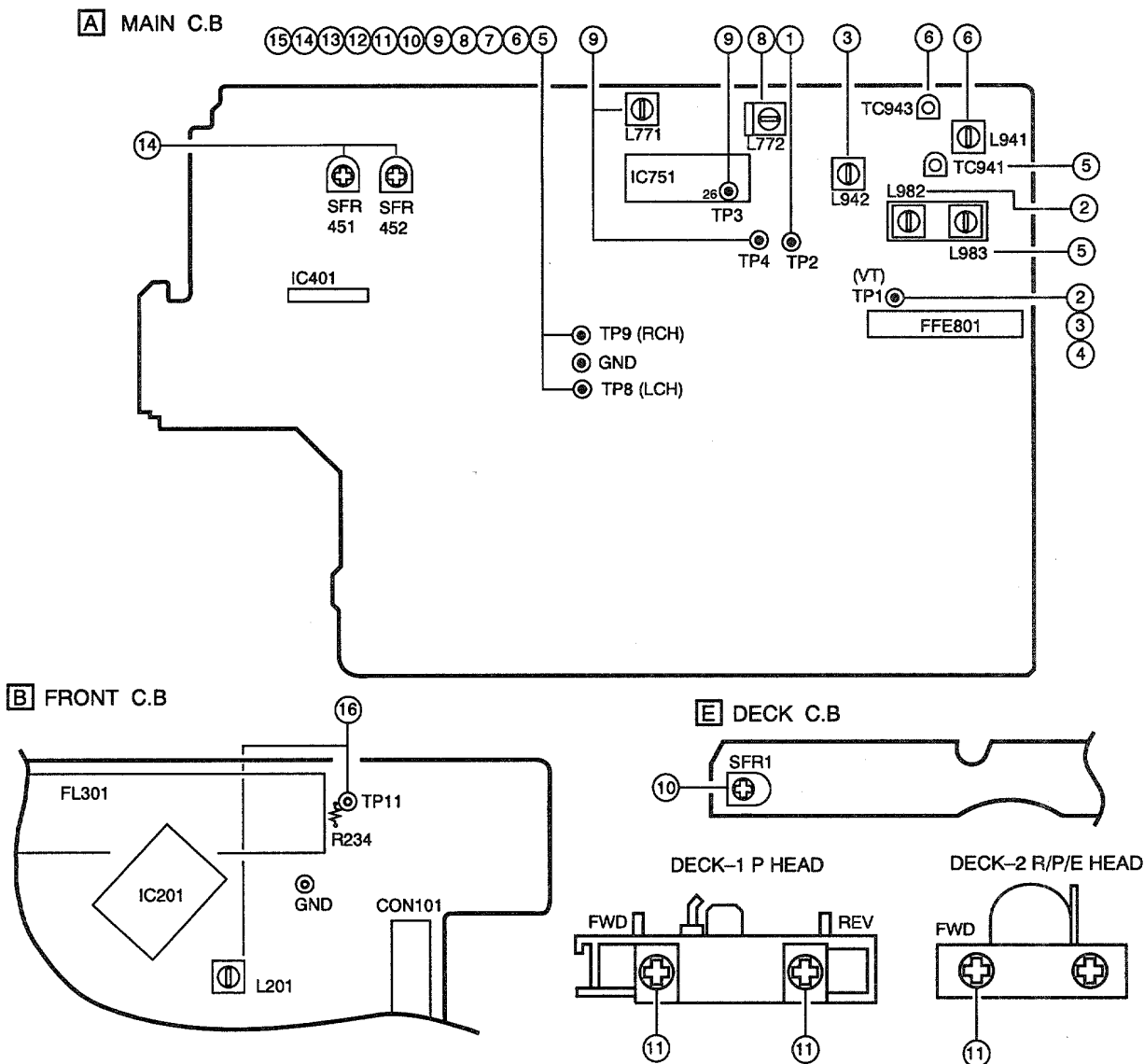
TO CN602

TO CN501

TO CN551



ADJUSTMENT <TUNER / DECK>



< TUNER SECTION >

1. Clock Frequency Check
 - Settings : • Test point : TP2
 - Method : Set to MW 1602kHz and check that the test point is 2052kHz \pm 45Hz.
2. MW VT Adjustment
 - Settings : • Test point : TP1 (VT)
 - Adjustment location : L982
 - Method : Set to MW 1710kHz and adjust L981 (3/3) so that the test point becomes 8.0V \pm 0.05V. Then check that the test point is more than 0.3V (530kHz).
3. SW VT Adjustment
 - Settings : • Test point : TP1 (VT)
 - Adjustment location : L942
 - Method : Set to SW 17.9MHz and adjust L942 so that the test point becomes 7.0V \pm 0.05V. Then check that the test point is more than 0.3V (5.9MHz).
4. FM VT Check
 - Settings : • Test point : TP1 (VT)
 - Method : Set to FM 87.5MHz, 108.0MHz and check that the test point is more than 0.5V (87.5MHz) and less than 8.0V (108.0MHz).
5. MW Tracking Adjustment
 - Settings : • Test point : TP8(Lch), TP9(Rch)
 - Adjustment location :
 - L983 603kHz
 - TC941 1404kHz
 - Method : Set up TC941 to center before adjustment. The level at 603kHz is adjust to maximum by L983. Then the level at 1404kHz is adjust to maximum by TC941.
6. SW Tracking Adjustment
 - Settings : • Test point : TP8(Lch), TP9(Rch)
 - Adjustment location :
 - L941 5.9MHz
 - TC943 17.9MHz

MECHANICAL PARTS LIST 1 / 1

If can't understand for Description please kindly refer to "REFERENCE NAME LIST".

REF. NO.	PART NO.	KANRI NO.	DESCRIPTION
8	8Z-NH9-001-210		CABI,FR H
11	8Z-NH9-025-010		WINDOW,DISP H-K386
38	8Z-NB8-011-210		PANEL,LEFT V-2
43	8Z-NF9-095-010		PANEL,TOP V-2R
45	8Z-NH9-016-010		CABI,REAR HRJSTM K386

COLOR NAME TABLE

Basic color symbol	Color	Basic color symbol	Color	Basic color symbol	Color
B	Black	C	Cream	D	Orange
G	Green	H	Gray	L	Blue
LT	Transparent Blue	N	Gold	P	Pink
R	Red	S	Silver	ST	Titan Silver
T	Brown	V	Violet	W	White
WT	Transparent White	Y	Yellow	YT	Transparent Yellow
LM	Metallic Blue	LL	Light Blue	GT	Transparent Green
LD	Dark Blue	DT	Transparent Orange		

SPEAKER PARTS LIST SX-NS552 (YJ3STL, YJ7STL, Y1STC1, YJSTC1)

If can't understand for Description please kindly refer to "REFERENCE NAME LIST".

REF. NO.	PART NO.	KANRI NO.	DESCRIPTION
1	8Z-NSH-001-010		PANEL,FR
2	8Z-NSH-004-010		GRILLE,FRAME ASSY
3	87-NSH-007-010		PROTECTOR
4	87-NSH-612-010		SPKR,CERAMIC ASSY
5	87-NS7-611-010		CORD,SPKR
6	8Z-NSJ-601-010		SPKR,W 130<Y1S,YJS>
6	8Z-NSJ-601-110		SPKR,W 130<YJ3,YJ7>
7	83-NS8-606-010		SPKR,T 50<Y1S,YJS>
7	83-NS8-606-110		SPKR,T 50<YJ3,YJ7>

REFERENCE NAME LIST

ELECTRICAL SECTION

DESCRIPTION	REFERENCE NAME
ANT	ANTENNAS
C-	CHIP
C-CAP	CAP, CHIP
C-CAP TN	CAP, CHIP TANTALUM
C-COIL	COIL, CHIP
C-DI	DIODE, CHIP
C-DIODE	DIODE, CHIP
C-FET	FET, CHIP
C-FOTR	FILTER, CHIP
C-JACK	JACK, CHIP
C-LED	LED, CHIP
C-RES	RES, CHIP
C-SFR	SFR, CHIP
C-SLIDE SW	SLIDE SWITCH, CHIP
C-SW	SWITCH, CHIP
C-TR	TRANSISTOR, CHIP
C-VR	VOLUME, CHIP
C-ZENER	ZENER, CHIP
CAP, CER	CAP, CERA-SOL
CAP, E	CAP, ELECT
CAP, M/F	CAP, FILM
CAP, TC	CAP, CERA-SOL
CAP, TC-U	CAP, CERA-SOL SS
CAP, TN	CAP, TANTALUM
CERA FIL	FILTER, CERAMIC
CF	FILTER, CERAMIC
DL	DELAY LINE
E/CAP	CAP, ELECT
FILT	FILTER
FLTR	FILTER
FUSE RES	RES, FUSE
MOT	MOTOR
P-DIODE	PHOTO DIODE
P-SNSR	PHOTO SENSER
P-TR	PHOTO TRANSISTOR
POLY VARI	VARIABLE CAPACITOR
PPCAP	CAP, PP
PT	POWER TRANSFORMER
PTR, RES	PTR, MELF
RC	REMOTE CONTROLLER
RES NF	RES, NON-FLAMMABLE
RESO	RESONATOR
SHLD	SHIELD
SOL	SOLENOID
SPKR	SPEAKER
SW, LVR	SWITCH, LEVER
SW, RTRY	SWITCH, ROTARY
SW, SL	SWITCH, SLIDE
TC CAP	CAP, CERA-SOL
THMS	THERMISTOR
TR	TRANSISTOR
TRIMER	CAP, TRIMMER
TUN-CAP	VARIABLE CAPACITOR
VIB, CER	RESONATOR, CERAMIC
VIB, XTAL	RESONATOR, CRYSTAL
VR	VOLUME
ZENER	DIODE, ZENER

MECHANICAL SECTION

DESCRIPTION	REFERENCE NAME
ADHESHIVE	SHEET ADHESHIVE
AZ	AZIMUTH
BAR-ANT	BAR-ANTENNA
BAT	BATTERY
BATT	BATTERY
BRG	BEARING
BTN	BUTTON
CAB	CABINET
CASS	CASSETTE
CHAS	CHASSIS
CLR	COLLAR
CONT	CONTROL
CRSR	CURSOR
CU	CUSHION
CUSH	CUSHION
DIR	DIRECTION
DUBB	DUBBING
FL	FRONT LOADING
FLY-WHL	FLYWHEEL
FR	FRONT
FUN	FUNCTION
G-CU	G-CUSHION
HDL	HANDOL
HIMERON	CLOTH
HINGE, BAT	HINGE, BATTERY
HLDR	HOLDER
HT-SINK	HEAT SINK
IB	INSTRUCTION BOOKLET
IDLE	IDLER
IND, L-R	INDICATOR, L-R
KEY, CONT	KEY, CONTROL
KEY, PRGM	KEY, PROGRAM
KNOB, SL	KNOB, SLIDE
LBL	LABEL
LID, BATT	LID, BATTERY
LID, CASS	LID, CASSETTE
LVR	LEVER
P-SP	P-SPRING
PANEL, CONT	PANEL, CONTROL
PANEL, FR	PANEL, FRONT
PRGM	PROGRAM
PULLY, LOAD MO	PULLY, LOAD MOTOR
RBN	RIBBON
S-	SPECIAL
SEG	SEGMENT
SH	SHEET
SHLD-SH	SHIELD-SHEET
SL	SLIDE
SP	SPRING
SP-SCREW	SPECIAL-SCREW
SPACER, BAT	SPACER, BATTERY
SPR	SPRING
SPR-P	P-SPRING
SPR-PC-PUSH	P-SPRING, C-PUSH
T-SP	T-SPRING
TERM	TERMINAL
TRIG	TRIGGER
TUN	TUNING
VOL	VOLUME
W	WASHER
WHL	WHEEL
WORM-WHL	WORM-WHEEL

サービス技術ニュース	
番号	連絡内容
G-	-
G-	-
G-	-

アイワ株式会社
AIWA CO., LTD.

9820543, 931261

Tokyo Japan