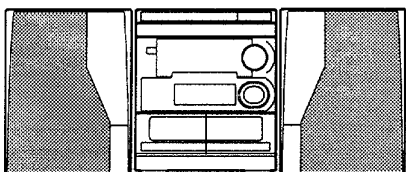


aiwa



NSX-K550



COMPACT DISC STEREO
CASSETTE RECEIVER

- BASIC TAPE MECHANISM : 2ZM-3MK2 YPR4NM
- BASIC CD MECHANISM : 4ZG-1 VSGDNM

• TYPE : HE

SUPPLEMENT

SYSTEM	CD - CASSEIVER	SPEAKER	REMOTE CONTROLLER
NSX-K550	CX - NK550	SX - ANS70	RC UNIT, 7AS07

- This Service Manual contains information about the difference between NSX-K550 (HE) and NSX-K550 (HR). If requiring the other information, see Service Manual of NSX-K550 (HR,HC). (S/M Code No 09-976-199-7FE)
- If requiring information about the CD mechanism, see Service Manual of 4ZG-1, S/M Code No. 09-977-206-10T.

SPECIFICATIONS

<FM Tuner section>

Tuning range 87.5 MHz to 108 MHz
Usable sensitivity (IHF) 13.2 dBf
Antenna terminals 75 ohms (unbalanced)

<MW Tuner section>

Tuning range 531 kHz to 1602 kHz (9 kHz step)
 530 kHz to 1710 kHz (10 kHz step)
Usable sensitivity 350 μ V/m
Antenna Loop antenna

<SW Tuner section>

Tuning range 5.900 MHz ~ 17.900 MHz
Antenna Wire antenna

<Amplifier section>

***Power output** Rated : 100 W + 100 W
 (6 ohms, T.H.D. 1 %, 1 kHz)
 Reference : 120 W + 120 W
 (6 ohms, T.H.D. 10 %, 1 kHz)
 *without connecting to the
 SURROUND SPEAKERS
Total harmonic distortion 0.05 % (70 W, 1 kHz, 6 ohms,
 DIN AUDIO)
Inputs VIDEO /AUX : 210 mV (adjustable)
 MD : 210 mV (adjustable)
 MIC : 1.4 mV (10 kohms)
Outputs LINE OUT : 200 mV
 VIDEO OUT : 1.0Vp-p (75 ohms)
 SUPER WOOFER : 2.7 V
 SPEAKERS: accept speakers of
 6 ohms or more
 SURROUND SPEAKERS :
 accept speakers of 16 ohms or
 more
 PHONES (stereo jack) :
 accepts headphones of 32 ohms
 or more

<Cassette deck section>

Track format 4 tracks, 2 channels stereo
Frequency response CrO2 tape : 50 Hz -16000 Hz
 Normal tape : 50 Hz -15000 Hz
 AC bias
Recording system
Heads Deck 1 : Playback head x 1
 Deck 2 : Recording/playback/
 erase head x 1

<Compact disc player section>

Laser Semiconductor laser ($\lambda = 780$ nm)
D-A converter 1 bit dual
Signal-to-noise ratio 85 dB (1 kHz, 0 dB)
Harmonic distortion 0.05% (1 kHz, 0 dB)
Wow and flutter Unmeasurable
Video signal NTSC/PAL color format
 (selectable)
Video data MPEG1
Audio data MPEG1, LAYER2:

<Speaker system SX-ANS70>

Cabinet type 4 way, bass reflex with surround
 speaker (magnetic sealed type)
Speakers Woofer :
 160 mm cone type
 Tweeter :
 50 mm cone type
 Super tweeter :
 20 mm ceramic type
 Cardioid speaker :
 80 mm cone type
 Surround speaker :
 80 mm cone type
Impedance Front speaker : 6 ohms
 Surround speaker : 16 ohms
Output sound pressure level 87 dB/W/m
Dimensions (W x H x D) 250 x 310 x 280 mm
Weight 4.5 kg
<General>
Power requirements 120 V/ 220 - 230 V/ 240 V AC,
 switchable ,50/60 Hz
Power consumption 140 W
Dimensions of main unit 260 x 309 x 346 mm
(W x H x D)
Weight of main unit 7.2 kg

- Design and specifications are subject to change without notice.
- The word "BBE" and the "BBE symbol" are trademarks of BBE Sound, Inc.
- Under license from BBE Sound, Inc.

ELECTRICAL MAIN PARTS LIST

If can't understand for Description please kindly refer to "REFERENCE NAME LIST".

REF. NO.	PART NO.	KANRI NO.	DESCRIPTION
IC			
	87-NH4-610-110		IC,LC866548A-5F60
	87-A20-783-040		C-IC,BA7762AFS
MAIN C.B			
FFE801	A8-7ZA-290-030		7ZA-2 FEUNM
J253	87-A60-401-010		JACK,PIN 3P B/R/W HS
J601	87-A60-402-010		JACK,PIN 6P R/W HSP-246V30
J801	87-033-239-010		TERMINAL,ANT 4P MSP-154V-02
TC941	87-011-220-080		TRIMMER,CER 20P
TC942	87-011-221-080		TRIMMER,CER 30P

MECHANICAL PARTS LIST 1 / 1

If can't understand for Description please kindly refer to "REFERENCE NAME LIST".

REF. NO.	PART NO.	KANRI NO.	DESCRIPTION
34	87-NH6-021-010		CABI, REAR HEJSTNM

ACCESSORIES / PACKAGE LIST

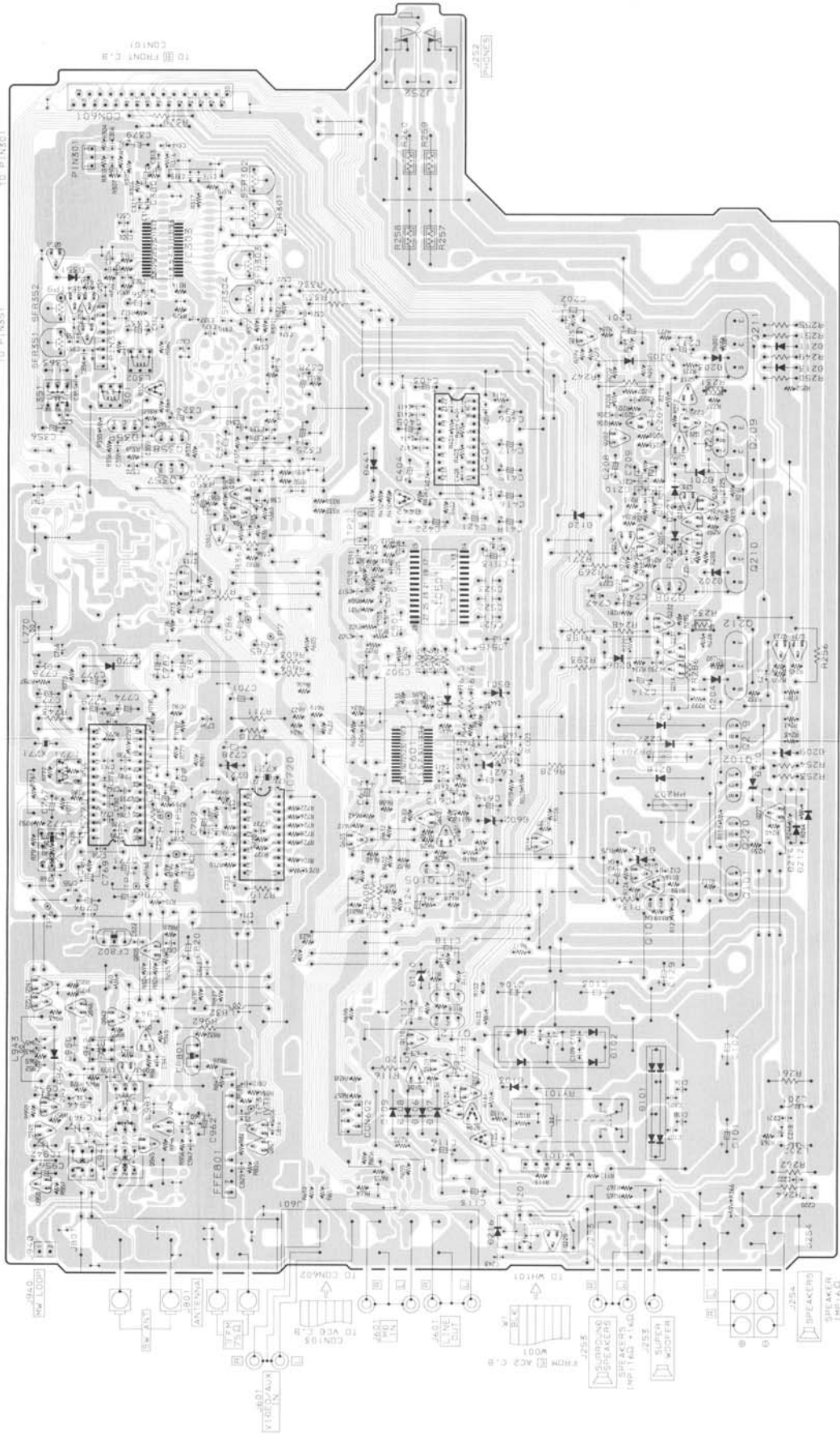
If can't understand for Description please kindly refer to "REFERENCE NAME LIST".

REF. NO.	PART NO.	KANRI NO.	DESCRIPTION
1	87-NH6-903-010		IB, H(IE) - INDO

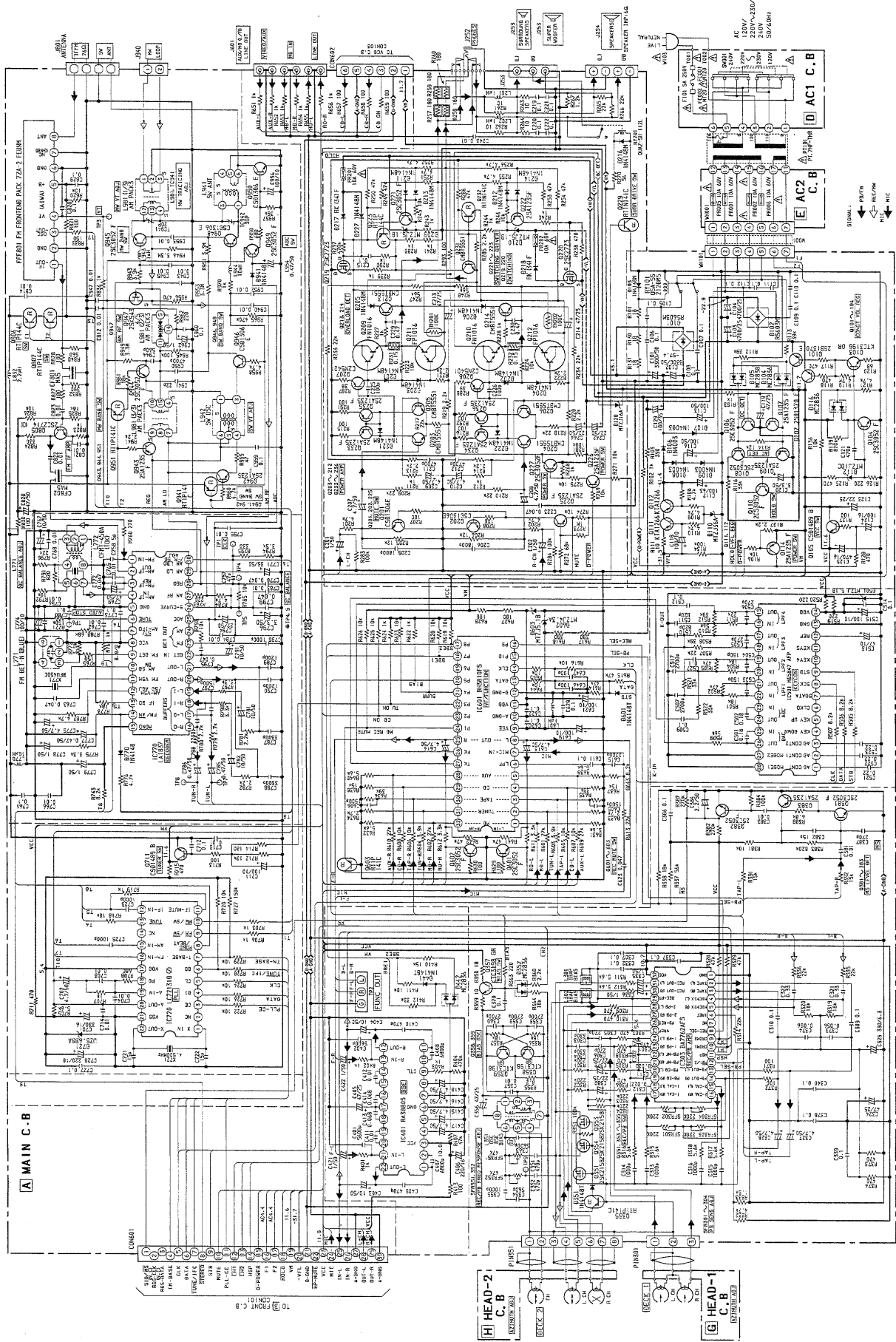
1 2 3 4 5 6 7 8 9 10 11 12 13 14

A B C D E F G H I J

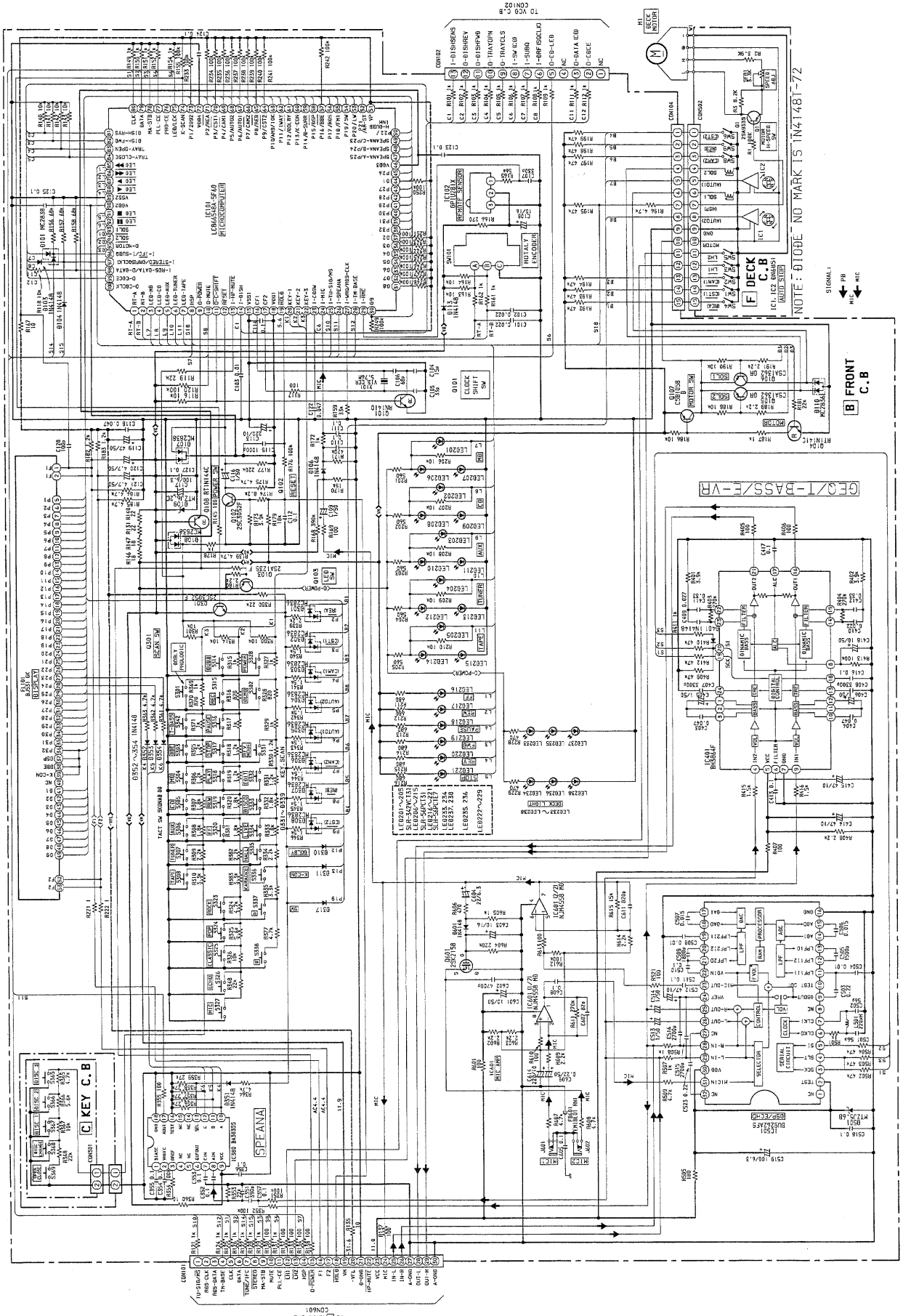
A MAIN C.B



SCHEMATIC DIAGRAM - 1 (MAIN)



SCHEMATIC DIAGRAM - 2 (FRONT)



サービス技術ニュース	
番号	連絡内容
G-	-
G-	-
G-	-

アイワ株式会社
AIWA CO.,LTD.

9620450,750038

Tokyo Japan