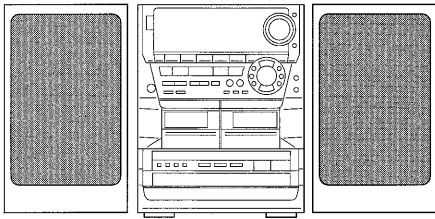


aiwa



NSX-MA945



COMPACT DISC STEREO
CASSETTE RECEIVER

- BASIC TAPE MECHANISM : 2ZM-3MK2 PR4NM
- BASIC CD MECHANISM : 4ZG-1 Z3RNDSHM

• TYPE : U

SUPPLEMENT

SYSTEM	CD CASSEIVER	SPEAKER	REMOTE CONTROLLER
NSX-MA945	CX-NMA945	SX-WNA999 SX-R275 SX-C605	RC-ZAS05

- This Service Manual is the "Revision Publishing" and replaces "Simple Manual" NSX-MA945 (U), (S/M Code No. 09-994-408-8T1).
- This Service Manual contains information about the difference between NSX-MA945 (U) and NSX-A999 (U). If requiring the other information, see Service Manual of NSX-A999/S999/S989 (U,LH,HR,K,EZ), (S/M Code No. 09-995-404-2R1).
- If requiring information about the CD mechanism, see Service Manual of 4ZG-1 Z3RNDSHM, (S/M Code No. 09-992-325-4N2).

SPECIFICATIONS

<FM Tuner section>

Tuning range 87.5 MHz to 108 MHz
Usable sensitivity(IHF) 13.2 dBf
Antenna terminals 75 ohms (unbalanced)

<AM Tuner section>

Tuning range 530 kHz to 1710 kHz (10 kHz step)
 531 kHz to 1602 kHz (9 kHz step)
Usable sensitivity 350 uV/m
Antenna Loop antenna

<Amplifier section>

Mid-high frequency amplifier

Power output 30 W + 30W (200 Hz – 20 kHz,
 THD less than 1 %, 6 ohms)
Total harmonic distortion 0.1 %
 (15 W, 1 kHz, 6 ohms, DIN AUDIO)

LOW FREQ + SUB WOOFER amplifier

Power output 90 W + 90 W (50 Hz – 200 Hz,
 THD less than 1 %, 6 ohms)
Total harmonic distortion 0.1 %
 (45 W, 80 Hz, 6 ohms, DIN AUDIO)

Rear (Surround)

33 W + 33 W (1 kHz, THD less than
 1%, 8 ohms)

Center

34 W (1 kHz, THD less than 1%,
 8 ohms)

Inputs

VIDEO/AUX: 316 mV (adjustable)
 MD: 316 mV (adjustable)
 MIC 1, MIC 2: 1 mV (10 k ohms)
 5.1 CH INPUT (adjustable)
 FRONT (L,R) : 240 mV
 REAR (L,R) : 240 mV
 CENTER : 600 mV
 SUB WOOFER : 240 mV

Outputs

SPEAKERS HIGH FREQ:
 accept speakers of 6 ohms or more
 SPEAKERS :
 (LOW FREQ + SUB WOOFER)
 accept speakers of 6 ohms or more
 SURROUND SPEAKERS: accept
 speakers of 8 ohms to 16 ohms
 LINE OUT: 150 mV
 PHONES (stereo jack) : accepts
 headphones of 32 ohms or more

<Cassette deck section>

Track format 4 tracks, 2 channels stereo
Frequency response CrO2 tape: 50 Hz – 16000 Hz
 Normal tape: 50 Hz – 15000Hz
Recording system AC bias
Heads Deck 1 : Playback head x 1
 Deck 2 : Recording/Playback head
 x 1, erase head x 1

<Compact disc player section>

Laser Semiconductor laser ($\lambda = 780 \text{ nm}$)
D-A converter 1 bit dual
Signal-to-noise ratio 85 dB (1 kHz, 0 dB)
Harmonic distortion 0.05 % (1 kHz, 0 dB)
Wow and flutter Unmeasurable

<Speaker system SX-WNA999>


Cabinet type 4 way, built-in subwoofer
 (magnetic shielded type)
Speakers Subwoofer :
 200 mm (7⁷/₈ in.) cone type
 Woofer :
 120 mm (4³/₄ in.) cone type
 Tweeter :
 60 mm (2³/₈ in.) cone type
 Super Tweeter :
 20 mm (1³/₁₆ in.) ceramic type
Impedance 6 ohms / 6 ohms
Output sound pressure level 87 dB/W/m
Dimensions (W x H x D) 240 x 354 x 319 mm
 (9¹/₂ x 14 x 12⁵/₈ in.)
Weight 7.0 kg (15 lbs 7 oz.)

<General>

Power requirements 120 V AC, 60 Hz
Power consumption 230 W
Dimensions of main unit
 (W x H x D) 260 x 324 x 340 mm
 (10¹/₄ x 12⁷/₈ x 13¹/₂ in.)
Weight of main unit 11.5 kg (25 lbs 6 oz.)
Standby power consumption With power – economizing mode
 off: 36 W
 With power – economizing mode
 on: 1.5 W

- Design and specifications are subject to change without notice.

- The word "BBE" and the "BBE symbol" are trademarks of BBE Sound, Inc.
 Under license from BBE Sound, Inc.

- Manufactured under license from Dolby Laboratories Licensing Corporation.
 "DOLBY", the double-D symbol  and "PRO LOGIC" are trademarks of Dolby Laboratories Licensing Corporation.

ELECTRICAL MAIN PARTS LIST

If can't understand for Description please kindly refer to "REFERENCE NAME LIST".

REF. NO.	PART NO.	KANRI NO.	DESCRIPTION	REF. NO.	PART NO.	KANRI NO.	DESCRIPTION
IC							
	8Z-NF7-605-010		C-IC, LC876572V-5K54		87-A40-234-080		ZENER, MTZJ5.6A
	87-A20-951-010		IC, TSOP1838RF1		87-017-931-080		ZENER, MTZJ5.6B
	87-A20-783-040		C-IC, BA7762AFS				
	87-A21-023-040		C-IC, BA3835F	MAIN C.B			
	87-A21-022-040		C-IC, BA3880FS	C1	87-012-369-080		C-CAP, S 0.047-50F
	87-A21-021-040		C-IC, BU2099FV	C2	87-012-369-080		C-CAP, S 0.047-50F
	87-A21-031-040		C-IC, BU4551BF	C3	87-012-368-080		C-CAP, S 0.1-50 F
	87-A21-202-040		C-IC, M62445AFP	C4	87-012-368-080		C-CAP, S 0.1-50 F
	87-A21-051-040		C-IC, BU9990-03FS	C5	87-012-368-080		C-CAP, S 0.1-50 F
	87-070-127-110		IC, LC72131D	C6	87-012-368-080		C-CAP, S 0.1-50 F
	87-A20-913-010		IC, LA1837NL	C9	87-016-658-090		CAP, E 4700-35 SMG
	87-020-454-010		IC, DN6851	C10	87-016-658-090		CAP, E 4700-35 SMG
	87-A21-097-040		C-IC, M62463AFP	C21	87-010-385-080		CAP, ELECT 220-25V
	87-A21-015-040		C-IC, M62491FP	C22	87-010-385-080		CAP, ELECT 220-25V
	87-A20-869-040		C-IC, M62449FP	C23	87-010-385-080		CAP, ELECT 220-25V
	87-A20-355-010		IC, CXA1553P	C24	87-010-385-080		CAP, ELECT 220-25V
TRANSISTOR				C25	87-010-430-080		CAP, ELECT 100-63
	87-A30-076-080		C-TR, 2SC3052F	C26	87-010-263-080		CAP, ELECT 100-10V
	87-A30-075-080		C-TR, 2SA1235F	C27	87-010-197-080		C-CAP, S 0.01-25 KB
	87-A30-073-080		C-TR, RT1N 141C	C28	87-010-263-080		CAP, ELECT 100-10V
	87-A30-106-070		C-TR, CMBT5551	C29	87-010-247-080		CAP, ELECT 100-50V
	87-A30-257-080		C-TR, 2SD1306E	C30	87-010-381-080		CAP, ELECT 330-16V
	87-A30-072-080		C-TR, RT1P 144C	C31	87-010-235-080		CAP, E 470-16 SME
	87-A30-074-080		C-TR, RT1P 141C	C61	87-010-260-080		CAP, E 47-25 SME
	87-A30-105-080		C-TR, RT1P 441C	C62	87-010-496-080		CAP, E 3.3-50 SRE
	87-A30-268-040		C-TR, 2SA1514 K(S)	C91	87-010-401-080		CAP, ELECT 1-50V
	87-A30-142-040		C-TR, DTA123EKA	C92	87-010-263-080		CAP, ELECT 100-10V
	87-A30-087-080		C-FET, 2SK2158	C93	87-010-380-080		CAP, ELECT 47-16V
	87-A30-159-080		C-TR, KTA1298Y	C101	87-010-178-080		C-CAP, S 1000P-50 B
	87-026-609-080		TR, KTA1266GR	C102	87-010-178-080		C-CAP, S 1000P-50 B
	87-026-610-080		TR, KTC3198GR	C105	87-010-184-080		C-CAP, S 3300P-50 KB
	87-A30-234-080		TR, CSC4115BC	C106	87-010-184-080		C-CAP, S 3300P-50 KB
	87-026-245-080		TR, DTC114ES	C107	87-010-403-080		CAP, E 3.3-50V
	87-A30-198-080		TR, KTC3199GR	C108	87-010-403-080		CAP, E 3.3-50V
	89-213-702-010		TR, 2SB1370 E	C111	87-010-260-080		CAP, E 47-25V
	87-A30-190-080		TR, CC5551	C112	87-010-260-080		CAP, E 47-25V
	87-A30-098-010		TR, FP 1016	C113	87-A10-812-080		C-CAP, S 220P-200 J CH
	87-A30-097-010		TR, FN 1016	C114	87-A10-812-080		C-CAP, S 220P-200 J CH
	87-A30-214-080		TR, 2SB1344	C117	87-016-247-080		C-CAP, S 0.1-50 ZF
	87-A30-215-080		TR, 2SD2025	C118	87-016-247-080		C-CAP, S 0.1-50 ZF
	87-A30-186-010		FET, 2SK3053	C121	87-010-178-080		C-CAP, S 1000P-50 B
	87-A30-202-080		C-TR, RT1P441C	C122	87-010-178-080		C-CAP, S 1000P-50 B
	87-026-463-080		TR, 2SA933SRS	C125	87-012-368-080		C-CAP, S 0.1-50 F
	87-A30-200-080		TR, 2SA1585SR	C126	87-012-368-080		C-CAP, S 0.1-50 F
	87-A30-119-040		C-TR, 2SC3906KR	C127	87-012-368-080		C-CAP, S 0.1-50 F
	87-A30-196-080		TR, 2SC4115SRS	C128	87-012-368-080		C-CAP, S 0.1-50 F
DIODE				C133	87-010-197-080		C-CAP, S 0.01-25 KB
	87-020-465-080		DIODE, 1SS133 (110MA)	C134	87-010-402-080		CAP, E 2.2-50 SME
	87-070-274-080		DIODE, 1N4003 SEM	C201	87-010-402-080		CAP, E 2.2-50V
	87-A40-549-090		DIODE, RBA-1002	C202	87-010-402-080		CAP, E 2.2-50V
	87-A40-488-080		DIODE, 1SS244	C203	87-010-176-080		C-CAP, S 680P-50 J SL
	87-A40-274-010		DIODE, FMB-G16L	C204	87-010-176-080		C-CAP, S 680P-50 J SL
	87-A40-442-080		ZENER, MTZJ9.1A	C229	87-010-993-080		C-CAP, S 0.056-25 B
	87-A40-270-080		C-DIODE, MC2838	C230	87-010-993-080		C-CAP, S 0.056-25 B
	87-A40-269-080		C-DIODE, MC2836	C231	87-010-196-080		CHIP CAPACITOR, 0.1-25
	87-020-331-080		C-DIODE, DAN202K	C232	87-010-196-080		CHIP CAPACITOR, 0.1-25
	87-A40-004-080		ZENER, MTZJ16A	C239	87-010-196-080		C-CAP, S 0.1-25 ZF
	87-A40-509-080		ZENER, MTZJ6.8C	C251	87-010-402-080		CAP, E 2.2-50V
	87-A40-341-080		ZENER, MTZJ 36 A	C252	87-010-183-080		C-CAP, S 2700P-50 KB
	87-A40-345-080		ZENER, MTZJ10C	C301	87-010-318-080		C-CAP, S 47P-50 CH
	87-017-932-080		ZENER, MTJ6.2B	C302	87-010-318-080		C-CAP, S 47P-50 CH
	87-070-136-080		ZENER, MTZJ5.1B	C303	87-012-157-080		C-CAP, S 330P-50 CH
	87-A40-002-080		ZENER, MTZJ5.1C	C304	87-012-157-080		C-CAP, S 330P-50 CH
	87-A40-438-080		ZENER, MTZJ4.7A	C305	87-012-145-080		C-CAP, S 270P-50 CH
				C306	87-012-145-080		C-CAP, S 270P-50 CH
				C307	87-010-196-080		CHIP CAPACITOR, 0.1-25
				C311	87-010-198-080		CAP, CHIP 0.022
				C312	87-010-198-080		CAP, CHIP 0.022
				C313	87-010-178-080		C-CAP, S 1000P-50 KB

REF. NO.	PART NO.	KANRI NO.	DESCRIPTION	REF. NO.	PART NO.	KANRI NO.	DESCRIPTION
C314	87-010-178-080		C-CAP,S 1000P-50 KB	C454	87-010-545-080		CAP, ELECT 0.22-50 SME
C315	87-010-178-080		C-CAP,S 1000P-50 KB	C455	87-010-546-080		CAP, ELECT 0.33-50 SME
C316	87-010-178-080		C-CAP,S 1000P-50 KB	C456	87-010-546-080		CAP, ELECT 0.33-50 SME
C317	87-012-142-080		C-CAP,S 0.33-16 ZF	C457	87-010-196-080		CHIP CAPACITOR,0.1-25
C318	87-012-142-080		C-CAP,S 0.33-16 ZF	C458	87-010-196-080		CHIP CAPACITOR,0.1-25
C319	87-012-141-080		C-CAP,S 0.22-16 ZF	C459	87-A10-300-080		CAP,M 0.027-50 J
C320	87-012-141-080		C-CAP,S 0.22-16 ZF	C460	87-A10-300-080		CAP,M 0.027-50 J
C321	87-012-142-080		CAP, S 0.33-16	C465	87-A10-300-080		CAP,M 0.027-50 J
C322	87-012-142-080		CAP, S 0.33-16	C466	87-A10-300-080		CAP,M 0.027-50 J
C324	87-010-260-080		CAP, ELECT 47-25V	C467	87-016-314-080		C-CAP,S 1-16 ZF
C325	87-010-370-080		CAP,E 330-6.3 SME	C601	87-010-183-080		C-CAP,S 2700P-50 B
C327	87-010-404-080		CAP, ELECT 4.7-50V	C602	87-010-183-080		C-CAP,S 2700P-50 B
C328	87-010-404-080		CAP, ELECT 4.7-50V	C611	87-010-197-080		C-CAP,S 0.01-25 KB
C332	87-010-196-080		CHIP CAPACITOR,0.1-25	C613	87-016-081-080		C-CAP,S 0.1-16 RK
C335	87-010-401-080		CAP, ELECT 1-50V	C614	87-016-081-080		C-CAP,S 0.1-16 RK
C336	87-010-401-080		CAP, ELECT 1-50V	C617	87-A10-305-080		CAP,M 0.068-50J
C337	87-010-196-080		CHIP CAPACITOR,0.1-25	C618	87-A10-305-080		CAP,M 0.068-50J
C339	87-010-196-080		CHIP CAPACITOR,0.1-25	C619	87-010-185-080		C-CAP,S 3900P-50 B
C340	87-010-196-080		CHIP CAPACITOR,0.1-25	C620	87-010-185-080		C-CAP,S 3900P-50 B
C351	87-012-140-080		CAP 470P	C621	87-010-401-080		CAP, ELECT 1-50V
C352	87-012-140-080		CAP 470P	C622	87-010-401-080		CAP, ELECT 1-50V
C354	87-010-175-080		CAP 560P	C623	87-A10-773-080		CAP,M 0.1-50 J
C355	87-012-349-080		C-CAP,S 1000P-50 CH	C624	87-A10-773-080		CAP,M 0.1-50 J
C356	87-010-260-080		CAP, ELECT 47-25V	C625	87-010-401-080		CAP, ELECT 1-50V
C357	87-010-197-080		CAP, CHIP 0.01 DM	C626	87-010-401-080		CAP, ELECT 1-50V
C358	87-010-183-080		C-CAP,S 2700P-50 B	C627	87-010-196-080		CHIP CAPACITOR,0.1-25
C359	87-010-183-080		C-CAP,S 2700P-50 B	C629	87-010-405-080		CAP, ELECT 10-50V
C360	87-010-183-080		C-CAP,S 2700P-50 B	C630	87-010-213-080		C-CAP,S 0.015-50 B
C363	87-A10-292-080		CAP,M 5600P-50 J	C631	87-010-992-080		C-CAP,S 0.047-25 B
C370	87-010-196-080		CHIP CAPACITOR,0.1-25	C632	87-010-263-080		CAP, ELECT 100-10V
C371	87-010-175-080		C-CAP,S 560P-50 J SL	C633	87-010-263-080		CAP, ELECT 100-10V
C372	87-010-175-080		C-CAP,S 560P-50 J SL	C634	87-010-196-080		CHIP CAPACITOR,0.1-25
C373	87-010-179-080		C-CAP,S 1200P-50 KB	C635	87-010-196-080		CHIP CAPACITOR,0.1-25
C374	87-010-179-080		C-CAP,S 1200P-50 KB	C636	87-010-992-080		C-CAP,S 0.047-25 B
C375	87-010-545-080		CAP,E 0.22-50 SME	C637	87-010-183-080		C-CAP,S 2700P-50 B
C376	87-010-545-080		CAP,E 0.22-50 SME	C640	87-010-314-080		C-CAP,S 22P-50V
C378	87-010-196-080		CHIP CAPACITOR,0.1-25	C641	87-010-196-080		CHIP CAPACITOR,0.1-25
C381	87-010-197-080		CAP, CHIP 0.01 DM	C677	87-010-196-080		CHIP CAPACITOR,0.1-25
C382	87-010-318-080		C-CAP,S 47P-50 CH	C678	87-010-196-080		CHIP CAPACITOR,0.1-25
C383	87-010-197-080		CAP, CHIP 0.01 DM	C680	87-010-196-080		CHIP CAPACITOR,0.1-25
C384	87-010-402-080		CAP, ELECT 2.2-50V	C731	87-010-560-080		CAP,E 10-50 GAS
C385	87-010-184-080		C-CAP,S 3300P-50 KB	C732	87-010-196-080		CHIP CAPACITOR,0.1-25
C386	87-010-196-080		CHIP CAPACITOR,0.1-25	C733	87-010-196-080		CHIP CAPACITOR,0.1-25
C388	87-012-156-080		C-CAP,S 220P-50 CH	C734	87-012-156-080		C-CAP,S 220P-50 CH
C391	87-012-145-080		C-CAP,S 270P-50 J CH	C735	87-010-178-080		CHIP CAP 1000P
C392	87-012-145-080		C-CAP,S 270P-50 J CH	C736	87-010-196-080		CHIP CAPACITOR,0.1-25
C393	87-012-145-080		C-CAP,S 270P-50 J CH	C738	87-010-318-080		C-CAP,S 47P-50 J CH
C394	87-012-145-080		C-CAP,S 270P-50 J CH	C741	87-010-178-080		C-CAP,S 1000P-50 KB
C401	87-010-196-080		CHIP CAPACITOR,0.1-25	C801	87-010-176-080		C-CAP,S 680P-50 J SL
C402	87-010-260-080		CAP, ELECT 47-25V	C802	87-010-176-080		C-CAP,S 680P-50 J SL
C403	87-010-404-080		CAP, ELECT 4.7-50V	C803	87-010-958-080		C-CAP,S 0.01-25 J B
C404	87-010-404-080		CAP, ELECT 4.7-50V	C804	87-010-958-080		C-CAP,S 0.01-25 J B
C405	87-010-404-080		CAP, ELECT 4.7-50V	C805	87-010-958-080		C-CAP,S 0.01-25 J B
C406	87-010-404-080		CAP, ELECT 4.7-50V	C806	87-010-958-080		C-CAP,S 0.01-25 J B
C407	87-010-188-080		CAP,CHIP 6800P	C807	87-010-401-080		CAP,E 1-50 M 11L SME
C408	87-010-188-080		CAP,CHIP 6800P	C808	87-010-401-080		CAP,E 1-50 M 11L SME
C409	87-012-140-080		CAP 470P	C809	87-010-196-080		CHIP CAPACITOR,0.1-25
C410	87-012-140-080		CAP 470P	C810	87-010-112-080		CAP,E 100-16 M 11L SME
C411	87-010-404-080		CAP, ELECT 4.7-50V	C811	87-010-495-080		CAP,E 2.2-50 M 5L SRE
C412	87-010-404-080		CAP, ELECT 4.7-50V	C812	87-010-495-080		CAP,E 2.2-50 M 5L SRE
C413	87-010-404-080		CAP, ELECT 4.7-50V	C813	87-010-401-080		CAP,E 1-50 M 11L SME
C414	87-010-404-080		CAP, ELECT 4.7-50V	C814	87-010-494-080		CAP,E 1-50 M 5L SRE
C415	87-010-197-080		CAP, CHIP 0.01 DM	C815	87-010-492-080		CAP,E 0.33-50 M 5L SRE
C416	87-010-197-080		CAP, CHIP 0.01 DM	C816	87-010-492-080		CAP,E 0.33-50 M 5L SRE
C417	87-010-956-080		CHIP-CAP,S 0.068-25B	C817	87-010-221-080		CAP,E 470-10 M 11L SME
C418	87-010-956-080		CHIP-CAP,S 0.068-25B	C818	87-A10-891-080		CAP,E 4.7-25 SME (K)
C419	87-010-260-080		CAP, ELECT 47-25V	C819	87-A10-800-080		C-CAP,S 6800P-16 JB
C451	87-010-401-080		CAP, ELECT 1-50V	C820	87-010-374-080		CAP,E 47-10 M 11L SME
C452	87-010-401-080		CAP, ELECT 1-50V	C821	87-010-196-080		CHIP CAPACITOR,0.1-25
C453	87-010-545-080		CAP, ELECT 0.22-50 SME	C822	87-A10-804-080		C-CAP,S 0.1-25 JB

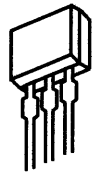
REF. NO.	PART NO.	KANRI NO.	DESCRIPTION	REF. NO.	PART NO.	KANRI NO.	DESCRIPTION
C824	87-010-374-080		CAP,E 47-10 M 11L SME	L801	87-003-383-010		COIL 1UH,K
C825	87-010-196-080		CHIP CAPACITOR,0.1-25	R20	87-A00-261-080		RES,M/F 0.22-1W J
C829	87-010-545-080		CAP,E 0.22-50 M 11L SME	R129	87-A00-258-080		RES,M/F 0.56-1W J
C830	87-012-142-080		C-CAP,S 0.33-16 ZF	R130	87-A00-258-080		RES,M/F 0.56-1W J
C831	87-010-971-080		C-CAP,S 4700P-50 JB	R131	87-A00-258-080		RES,M/F 0.56-1W J
C832	87-012-349-080		C-CAP,S 1000P-50 J CH	R132	87-A00-258-080		RES,M/F 0.56-1W J
C833	87-A11-183-080		C-CAP,S 0.12-16 JB	R143	87-A00-441-050		RES,270-1/2W J RP
C834	87-A11-182-080		C-CAP,S 0.27-16 JB	R144	87-A00-441-050		RES,270-1/2W J RP
C835	87-A11-182-080		C-CAP,S 0.27-16 JB	R145	87-A00-441-050		RES,270-1/2W J RP
C836	87-A11-183-080		C-CAP,S 0.12-16 JB	R146	87-A00-441-050		RES,270-1/2W J RP
C837	87-010-971-080		C-CAP,S 4700P-50 JB	R165	87-A00-258-080		RES,M/F 0.56-1W J
C838	87-012-349-080		C-CAP,S 1000P-50 J CH	R166	87-A00-258-080		RES,M/F 0.56-1W J
C839	87-010-805-080		C-CAP,S 1-16 ZF	R845	87-010-195-080		C-CAP,S 0.068-25 ZF
C840	87-010-401-080		CAP,E 1-50 M 11L SME	SFR301	87-A90-433-080		SFR,50K HNVZ6TLTA
C841	87-A10-799-080		C-CAP,S 5600P-16 J B CM	SFR302	87-A90-433-080		SFR,50K HNVZ6TLTA
C842	87-A10-802-080		C-CAP,S 0.047-16 J B CM	SFR303	87-A90-433-080		SFR,50K HNVZ6TLTA
C843	87-A10-229-080		C-CAP,S 0.68-10 K W5R	SFR304	87-A90-433-080		SFR,50K HNVZ6TLTA
C844	87-012-393-080		C-CAP,S 0.22-16 K W5R	SFR305	87-A90-433-080		SFR,50K HNVZ6TLTA
C845	87-012-393-080		C-CAP,S 0.22-16 K W5R	SFR306	87-A90-433-080		SFR,50K HNVZ6TLTA
C846	87-010-404-080		CAP,E 4.7-50 M 11L SME	SFR351	87-A90-433-080		SFR,50K HNVZ6TLTA
C847	87-010-404-080		CAP,E 4.7-50 M 11L SME	SFR352	87-A90-433-080		SFR,50K HNVZ6TLTA
C848	87-012-393-080		C-CAP,S 0.22-16 K W5R	TH101	87-A91-042-080		C-THMS,100K
C849	87-012-393-080		C-CAP,S 0.22-16 K W5R	TH102	87-A91-042-080		C-THMS,100K
C850	87-016-081-080		C-CAP,S 0.1-16 K R GRM	WH1	87-A90-510-010		HLDL,WIRE 2.5-9P
C851	87-A10-802-080		C-CAP,S 0.047-16 J B CM				
C852	87-A10-802-080		C-CAP,S 0.047-16 J B CM	FRONT C.B			
C853	87-016-081-080		C-CAP,S 0.1-16 K R GRM	C103	87-010-322-080		C-CAP,S 100P-50 JCH
C854	87-016-081-080		C-CAP,S 0.1-16 K R GRM	C105	87-010-322-080		C-CAP,S 100P-50 CH
C855	87-A10-801-080		C-CAP,S 0.022-16 JB CM	C106	87-010-312-080		CAP,15P
C856	87-A10-801-080		C-CAP,S 0.022-16 JB CM	C107	87-012-157-080		C-CAP,S 330P-50 CH
C857	87-016-081-080		C-CAP,S 0.1-16 K R GRM	C108	87-010-560-040		CAP,E 10-50 5L
C861	87-010-196-080		C-CAP,S 0.1-25 ZF				
C863	87-010-196-080		C-CAP,S 0.1-25 ZF	C111	87-010-322-080		C-CAP,S 100P-50<EZ,K>
C865	87-012-141-080		C-CAP,S 0.22-16 ZF	C112	87-016-081-080		C-CAP,S 0.1-16 RK
C866	87-010-194-080		C-CAP,S 0.047-25 ZF	C113	87-A11-242-040		CAP,E 220-10 M 5L SRM
C867	87-A10-201-080		C-CAP,S 0.33-16 KB	C114	87-010-196-080		CHIP CAPACITOR,0.1-25
C868	87-A10-060-080		C-CAP,S 0.18-16 KB	C115	87-010-198-080		CAP, CHIP 0.022
C879	87-010-179-080		C-CAP,S 1200P-50 KB	C116	87-010-493-040		CAP,E 0.47-50 GAS
C878	87-010-401-080		CAP,E 1-50 M 11L SME	C117	87-010-498-040		CAP,E 10-16 GAS
C880	87-010-179-080		C-CAP,S 1200P-50 KB	C118	87-A11-242-040		CAP,E 220-10 M 5L SRM
C881	87-010-179-080		C-CAP,S 1200P-50 KB	C121	87-012-368-080		C-CAP,S 0.1-50 F
C882	87-010-179-080		C-CAP,S 1200P-50 KB	C122	87-010-178-080		CHIP CAP 1000P
C890	87-010-993-080		C-CAP,S 0.056-25 KB				
C899	87-010-196-080		C-CAP,S 0.1-25 ZF	C123	87-010-196-080		CHIP CAPACITOR,0.1-25
CN1	87-A60-739-010		CONN,13P JL-BT	C124	87-010-196-080		CHIP CAPACITOR,0.1-25
CN91	87-A60-109-010		CONN,2P V S2M-2W	C125	87-010-196-080		CHIP CAPACITOR,0.1-25
CN201	87-A60-739-010		CONN,13P JL-BT	C126	87-010-196-080		CHIP CAPACITOR,0.1-25
CN203	87-099-564-010		CONN,4P V TUC-P4P-B1	C151	87-012-369-080		C-CAP,S 0.047-50F
CN301	87-099-827-010		CONN,3P S2M-3W				
CN351	87-099-832-010		CONN,8P S2M-8W	C153	87-010-196-080		CHIP CAPACITOR,0.1-25
CN601	87-099-719-010		CONN,30P TYK-B(X)	C154	87-010-264-040		CAP,E 100-10 5L
CN602	87-A60-131-010		CONN,06P V FE	C181	87-012-157-080		C-CAP,S 330P-50 CH
CN604	87-099-570-010		CONN,13P TUC-P13P-B1	C185	87-010-197-080		CAP, CHIP 0.01 DM
CN901	87-099-568-010		CONN,11P V TUC-P11P-B1	C186	87-010-182-080		C-CAP,S 2200P-50 B
CNA1	8Z-NF8-669-010		CONN ASSY,9P VH				
CNA802	8Z-NFS-610-010		CONN ASSY,2P V DA(170MM)	C202	87-010-177-080		C-CAP S 820P-50J SL
FC602	88-906-601-110		FF-CABLE, 6P 1.25 600MM	C221	87-010-421-040		CAP,E 4.7-50 5L
J201	87-A60-483-010		JACK,DIA6.3 BLK ST W/S KM	C222	87-010-421-040		CAP,E 4.7-50 5L
J203	87-033-240-010		TERMINAL,4P HSP-324V1-05	C223	87-010-408-040		CAP,E 47-50 SME
J205	87-A60-751-010		JACK,PIN 2P R/W BLUE	C224	87-012-369-080		C-CAP,S 0.047-50F
J206	87-A60-872-010		JACK,PIN 3P W/R/O HSP-243G	C381	87-010-196-080		CHIP CAPACITOR,0.1-25
J601	87-A60-402-010		JACK,PIN 6P R/W HSP-246V30	C382	87-012-158-080		C-CAP,S 390P-50 CH
J831	87-A60-746-010		JACK,PIN 6P R/W, O/B	C383	87-010-196-080		CHIP CAPACITOR,0.1-25
L101	87-003-383-010		COIL,1UH-S	C384	87-010-196-080		CHIP CAPACITOR,0.1-25
L102	87-003-383-010		COIL,1UH-S	C385	87-010-196-080		CHIP CAPACITOR,0.1-25
L201	87-003-383-010		COIL,1UH-S				
L202	87-003-383-010		COIL,1UH-S	C386	87-010-196-080		CHIP CAPACITOR,0.1-25
L301	87-A50-049-010		COIL,TRAP 85K(COI)	C387	87-010-196-080		CHIP CAPACITOR,0.1-25
L302	87-A50-049-010		COIL,TRAP 85K(COI)	C401	87-010-196-080		CHIP CAPACITOR,0.1-25
L351	87-007-342-010		COIL,OSC 85K BIAS	C402	87-010-196-080		CHIP CAPACITOR,0.1-25
				C403	87-010-319-080		C-CAP,S 56P-50 CH
				C404	87-010-319-080		C-CAP,S 56P-50 CH
				C405	87-010-319-080		C-CAP,S 56P-50 CH
				C406	87-010-322-080		C-CAP,S 100P-50 CH

REF. NO.	PART NO.	KANRI NO.	DESCRIPTION	REF. NO.	PART NO.	KANRI NO.	DESCRIPTION
C407	87-010-322-080		C-CAP,S 100P-50 CH	LED458	87-A40-619-040		LED,SLR-56PT-T31-W GRN
C408	87-010-322-080		C-CAP,S 100P-50 CH	LED459	87-A40-619-040		LED,SLR-56PT-T31-W GRN
C601	87-010-186-080		CAP,CHIP 4700P	LED460	87-A40-619-040		LED,SLR-56PT-T31-W GRN
C602	87-010-405-040		CAP,E 10-50 7L	LED461	87-A40-564-010		LED,SEL6215S-LF62 RED
C603	87-010-320-080		CHIP CAP 68P	LED462	87-A40-564-010		LED,SEL6215S-LF62 RED
C604	87-010-546-040		CAP,E 0.33-50	LED463	87-A40-619-040		LED,SLR-56PT-T31-W GRN
C605	87-010-196-080		CHIP CAPACITOR,0.1-25	LED464	87-A40-619-040		LED,SLR-56PT-T31-W GRN
C606	87-010-112-080		CAP, ELECT 100-16V	LED481	87-A40-619-040		LED,SLR-56PT-T31-W GRN
C607	87-010-196-080		CHIP CAPACITOR,0.1-25	LED482	87-A40-619-040		LED,SLR-56PT-T31-W GRN
C652	87-010-183-080		C-CAP,S 2700P-50 B	LED483	87-A40-619-040		LED,SLR-56PT-T31-W GRN
C653	87-010-213-080		C-CAP,S 0.015-50 B	LED484	87-A40-619-040		LED,SLR-56PT-T31-W GRN
C701	87-018-209-080		CAP,TC U 0.1-50 ZF UP050	LED485	87-A40-619-040		LED,SLR-56PT-T31-W GRN
C801	87-012-156-080		C-CAP,S 220P-50 CH	LED486	87-A40-619-040		LED,SLR-56PT-T31-W GRN
C802	87-010-176-080		C-CAP,S 680P-50 SL	LED487	87-A40-619-040		LED,SLR-56PT-T31-W GRN
C803	87-010-187-080		CAP CHIP S5600P	LED488	87-A40-619-040		LED,SLR-56PT-T31-W GRN
C804	87-010-213-080		C-CAP,S 0.015-50 B	R210	87-012-157-080		C-CAP,S 330P-50 J CH
C805	87-010-196-080		C-CAP,S 0.1-25 ZF	R212	87-012-157-080		C-CAP,S 330P-50 J CH
C806	87-010-401-040		CAP,E 1-50 SME	R213	87-012-157-080		C-CAP,S 330P-50 J CH
C807	87-010-196-080		C-CAP,S 0.1-25 ZF	S101	87-A90-535-010		SW,RTRY EC16B24304
C809	87-012-155-080		C-CAP 180P-50CH	S102	87-A91-397-010		SW,RTRY 121SL10-12T2
C810	87-010-263-040		CAP,E 100-10	S301	87-A91-024-080		SW,TACT KSH0611BT
C811	87-010-382-080		CAP, ELECT 22-25V	S302	87-A91-024-080		SW,TACT KSH0611BT
C812	87-010-560-040		CAP,E 10-50	S303	87-A91-024-080		SW,TACT KSH0611BT
CN101	87-099-720-010		CONN,30P TYK-B(P)	S304	87-A91-024-080		SW,TACT KSH0611BT
CN104	87-A60-140-010		CONN,15P V FE	S305	87-A91-024-080		SW,TACT KSH0611BT
CN301	87-A60-131-010		CONN,6P V FE	S306	87-A91-024-080		SW,TACT KSH0611BT
CN901	87-A60-138-010		CONN,13P V FE	S307	87-A91-024-080		SW,TACT KSH0611BT
FB601	87-A50-190-080		C-COIL,S BLM21A102S	S308	87-A91-024-080		SW,TACT KSH0611BT
FC104	88-915-181-110		FF-CABLE,15P 1.25 170MM	S309	87-A91-024-080		SW,TACT KSH0611BT
FC301	88-906-301-110		FF-CABLE,6P-1.25	S310	87-A91-024-080		SW,TACT KSH0611BT
FC901	88-913-551-110		FF-CABLE,13P 1.25 550MM	S311	87-A91-024-080		SW,TACT KSH0611BT
FL201	8Z-NF5-611-010		FL,BJ686GK-ZNF5	S312	87-A91-024-080		SW,TACT KSH0611BT
J601	87-A60-651-010		JACK,3.5MONO	S313	87-A91-024-080		SW,TACT KSH0611BT
J602	87-A60-651-010		JACK,3.5MONO	S314	87-A91-024-080		SW,TACT KSH0611BT
L101	87-A50-333-010		COIL,OSC 9.43MHZ	S315	87-A91-024-080		SW,TACT KSH0611BT
L801	87-A50-093-010		COIL,CLOCK 5.76MHZ	S321	87-A91-024-080		SW,TACT KSH0611BT
L802	87-005-847-080		COIL,2.2uH K CECS	S322	87-A91-024-080		SW,TACT KSH0611BT
LED293	87-A40-589-040		LED,SLR-56VCT31 RED	S323	87-A91-024-080		SW,TACT KSH0611BT
LED401	87-A40-608-040		LED,SLV-312VC RED	S324	87-A91-024-080		SW,TACT KSH0611BT
LED402	87-A40-608-040		LED,SLV-312VC RED	S325	87-A91-024-080		SW,TACT KSH0611BT
LED403	87-A40-608-040		LED,SLV-312VC RED	S326	87-A91-024-080		SW,TACT KSH0611BT
LED404	87-A40-608-040		LED,SLV-312VC RED	S327	87-A91-024-080		SW,TACT KSH0611BT
LED405	87-A40-608-040		LED,SLV-312VC RED	S328	87-A91-024-080		SW,TACT KSH0611BT
LED406	87-A40-619-040		LED,SLR-56PT-T31-W GRN	S329	87-A91-024-080		SW,TACT KSH0611BT
LED407	87-A40-619-040		LED,SLR-56PT-T31-W GRN	S330	87-A91-024-080		SW,TACT KSH0611BT
LED408	87-A40-619-040		LED,SLR-56PT-T31-W GRN	S331	87-A91-024-080		SW,TACT KSH0611BT
LED409	87-A40-619-040		LED,SLR-56PT-T31-W GRN	S332	87-A91-024-080		SW,TACT KSH0611BT
LED410	87-A40-619-040		LED,SLR-56PT-T31-W GRN	S333	87-A91-024-080		SW,TACT KSH0611BT
LED411	87-A40-619-040		LED,SLR-56PT-T31-W GRN	S334	87-A91-024-080		SW,TACT KSH0611BT
LED412	87-A40-619-040		LED,SLR-56PT-T31-W GRN	S335	87-A91-024-080		SW,TACT KSH0611BT
LED413	87-A40-619-040		LED,SLR-56PT-T31-W GRN	S341	87-A91-024-080		SW,TACT KSH0611BT
LED414	87-A40-619-040		LED,SLR-56PT-T31-W GRN	S342	87-A91-024-080		SW,TACT KSH0611BT
LED415	87-A40-619-040		LED,SLR-56PT-T31-W GRN	S343	87-A91-024-080		SW,TACT KSH0611BT
LED416	87-A40-619-040		LED,SLR-56PT-T31-W GRN	S344	87-A91-024-080		SW,TACT KSH0611BT
LED417	87-A40-619-040		LED,SLR-56PT-T31-W GRN	S345	87-A91-024-080		SW,TACT KSH0611BT
LED418	87-A40-619-040		LED,SLR-56PT-T31-W GRN	S346	87-A91-024-080		SW,TACT KSH0611BT
LED419	87-A40-619-040		LED,SLR-56PT-T31-W GRN				
LED420	87-A40-619-040		LED,SLR-56PT-T31-W GRN				
LED421	87-A40-619-040		LED,SLR-56PT-T31-W GRN				
LED433	87-A40-563-010		LED,SEL6515C-LF62 PGRN	CD KEY C.B			
LED434	87-A40-563-010		LED,SEL6515C-LF62 PGRN	CN302	87-A60-131-010		CONN,6P V FE
LED435	87-A40-563-010		LED,SEL6515C-LF62 PGRN	LED440	87-A40-608-040		LED,SLV-312VC RED
LED436	87-A40-563-010		LED,SEL6515C-LF62 PGRN	LED441	87-A40-608-040		LED,SLV-312VC RED
LED450	87-A40-608-040		LED,SLV-312VC RED	LED442	87-A40-608-040		LED,SLV-312VC RED
LED451	87-A40-608-040		LED,SLV-312VC RED	LED443	87-A40-609-040		LED,SLV-312MC PG
LED453	87-A40-619-040		LED,SLR-56PT-T31-W GRN	LED444	87-A40-609-040		LED,SLV-312MC PG
LED454	87-A40-619-040		LED,SLR-56PT-T31-W GRN	LED445	87-A40-609-040		LED,SLV-312MC PG
LED455	87-A40-619-040		LED,SLR-56PT-T31-W GRN	LED446	87-A40-609-040		LED,SLV-312MC PG
LED456	87-A40-619-040		LED,SLR-56PT-T31-W GRN	LED447	87-A40-609-040		LED,SLV-312MC PG
LED457	87-A40-619-040		LED,SLR-56PT-T31-W GRN	LED448	87-A40-609-040		LED,SLV-312MC PG

REF. NO.	PART NO.	KANRI NO.	DESCRIPTION	REF. NO.	PART NO.	KANRI NO.	DESCRIPTION
LED470	87-A40-608-040		LED,SLV-312VC RED	C785	87-010-401-080		CAP, ELECT 1-50V
LED471	87-A40-609-040		LED,SLV-312MC PG	C786	87-010-401-080		CAP, ELECT 1-50V
LED472	87-A40-608-040		LED,SLV-312VC RED	C789	87-012-275-080		C-CAP,U 1200P-50 B
LED473	87-A40-609-040		LED,SLV-312MC PG	C790	87-012-275-080		C-CAP,U 1200P-50 B
LED474	87-A40-608-040		LED,SLV-312VC RED	C791	87-010-405-080		CAP, ELECT 10-50V
LED475	87-A40-609-040		LED,SLV-312MC PG	C793	87-012-273-080		C-CAP,U 820P-50 B
S348	87-A91-024-080		SW,TACT KSH0611BT	C794	87-010-406-080		CAP, ELECT 22-50
S349	87-A91-024-080		SW,TACT KSH0611BT	C795	87-010-596-080		CAP, S 0.047-16
S350	87-A91-024-080		SW,TACT KSH0611BT	C796	87-010-403-080		CAP, ELECT 3.3-50V
S351	87-A91-024-080		SW,TACT KSH0611BT	C799	87-010-829-080		CAP, U 0.047-16
S352	87-A91-024-080		SW,TACT KSH0611BT	C812	87-012-286-080		CAP, U 0.01-25
S353	87-A91-024-080		SW,TACT KSH0611BT	C820	87-010-260-080		CAP, ELECT 47-25V
S354	87-A91-024-080		SW,TACT KSH0611BT	C821	87-012-286-080		CAP, U 0.01-25
S355	87-A91-024-080		SW,TACT KSH0611BT	C822	87-012-286-080		CAP, U 0.01-25
				C823	87-012-286-080		CAP, U 0.01-25
TUNER C.B				C828	87-010-196-080		CHIP CAPACITOR,0.1-25
C701	87-010-381-080		CAP, ELECT 330-16V	C829	87-010-196-080		CHIP CAPACITOR,0.1-25
C702	87-010-404-080		CAP, ELECT 4.7-50V	C959	87-010-196-080		CHIP CAPACITOR,0.1-25
C703	87-012-286-080		CAP, U 0.01-25	C960	87-010-196-080		CHIP CAPACITOR,0.1-25
C704	87-012-286-080		CAP, U 0.01-25	C961	87-012-170-080		C-CAP,U 8P-50 CH
C705	87-A10-592-080		C-CAP,S 0.015-50 J B	C963	87-010-196-080		CHIP CAPACITOR,0.1-25
C706	87-A10-592-080		C-CAP,S 0.015-50 J B	CF801	87-008-261-010		FILTER, SFE10.7MA5-A
C709	87-012-195-080		C-CAP,U 100P-50CH	CF802	87-008-261-010		FILTER, SFE10.7MA5-A
C711	87-010-260-080		CAP, ELECT 47-25V	CN701	87-A60-700-010		CONN,13P H GRY TUC-P13X-C1
C712	87-010-831-080		C-CAP,U,0.1-16F	FFE801	A8-8ZA-190-030		8ZA-1 FEUNM
C714	87-012-286-080		CAP, U 0.01-25	J801	87-A60-702-010		TERMINAL,ANT 4P CJ-9036
C717	87-012-286-080		CAP, U 0.01-25	L771	87-A50-266-010		COIL,FM DET-2N(TOK)
C718	87-012-179-080		C-CAP,U 20P-50 CH	L772	87-A90-733-010		FLTR,PCFAZH-450 (TOK)
C719	87-012-286-080		CAP, U 0.01-25	L981	87-NF4-650-010		COIL,AM PACK 4N(TOK)
C720	87-012-195-080		C-CAP,U 100P-50CH	X721	87-A70-061-010		VIB,XTAL 4.500MHZ CSA-309PT C.B
C721	87-012-176-080		CAP 15P				
C722	87-012-176-080		CAP 15P	5CH AMP C.B			
C723	87-012-274-080		CHIP CAP,U 1000P-50B	C203	87-010-408-080		CAP, ELECT 47-50M 11L SME
C725	87-012-274-080		CHIP CAP,U 1000P-50B	C204	87-010-408-080		CAP, ELECT 47-50M 11L SME
C727	87-010-196-080		CHIP CAPACITOR,0.1-25	C207	87-010-408-080		CAP, ELECT 47-50V
C728	87-010-248-080		CAP, ELECT 220-10V	C208	87-010-408-080		CAP, ELECT 47-50V
C729	87-012-274-080		CHIP CAP,U 1000P-50B	C209	87-010-322-080		C-CAP,S 100P-50 J CH
C731	87-012-286-080		CAP, U 0.01-25	C210	87-010-322-080		C-CAP,S 100P-50 J CH
C733	87-010-987-080		C-CAP,S 1500P-50 CH	C211	87-010-260-080		CAP, ELECT 47-25V
C734	87-010-987-080		C-CAP,S 1500P-50 CH	C212	87-010-260-080		CAP, ELECT 47-25V
C735	87-010-987-080		C-CAP,S 1500P-50 CH	C213	87-A10-812-080		C-CAP,S 220P-200 J CH
C736	87-010-987-080		C-CAP,S 1500P-50 CH	C214	87-A10-812-080		C-CAP,S 220P-200 J CH
C737	87-A10-592-080		C-CAP,S 0.015-50 J B	C219	87-012-368-080		C-CAP,S 0.1-50 F
C738	87-A10-592-080		C-CAP,S 0.015-50 J B	C220	87-012-368-080		C-CAP,S 0.1-50 F
C751	87-012-365-080		C-CAP,S 0.027-25VBK	C221	87-010-178-080		CHIP CAP 1000P
C752	87-012-365-080		C-CAP,S 0.027-25VBK	C222	87-010-178-080		CHIP CAP 1000P
C756	87-012-286-080		CAP, U 0.01-25	C299	87-010-197-080		C-CAP,S 0.01-25 K B
C757	87-012-188-080		C-CAP,U 47P-50 CH	C303	87-010-403-080		CAP,E 3.3-50V SME
C758	87-012-167-080		C-CAP,U 5P-50 CH	C304	87-010-403-080		CAP, ELECT 3.3-50V
C763	87-010-829-080		CAP, U 0.047-16	C305	87-010-182-080		C-CAP,S 2200P-50 KB
C764	87-012-337-080		C-CAP,U 56P-50 CH	C306	87-010-182-080		C-CAP,S 2200P-50 K B
C765	87-012-286-080		CAP, U 0.01-25	C307	87-010-403-080		CAP, ELECT 3.3-50V
C768	87-012-286-080		CAP, U 0.01-25	C308	87-010-403-080		CAP, ELECT 3.3-50V
C769	87-010-260-080		CAP, ELECT 47-25V	C309	87-010-322-080		C-CAP,S 100P-50 J CH
C770	87-010-829-080		CAP, U 0.047-16	C310	87-010-322-080		C-CAP,S 100P-50 J CH
C771	87-010-383-080		CAP, ELECT 33-25V	C311	87-A10-946-080		C-CAP,S 220P-100 J CH
C772	87-010-829-080		CAP, U 0.047-16	C312	87-A10-946-080		C-CAP,S 220P-100 J CH
C773	87-010-196-080		CHIP CAPACITOR,0.1-25	C313	87-010-260-080		CAP, ELECT 47-25V
C774	87-010-263-080		CAP, ELECT 100-10V	C314	87-010-260-080		CAP, ELECT 47-25V
C775	87-010-404-080		CAP, ELECT 4.7-50V	C319	87-012-368-080		C-CAP,S 0.1-50 F
C776	87-012-286-080		CAP, U 0.01-25	C320	87-012-368-080		C-CAP,S 0.1-50 F
C777	87-010-400-080		CAP, ELECT 0.47-50V	C321	87-010-186-080		C-CAP,S 4700P-50 KB
C778	87-010-401-080		CAP, ELECT 1-50V	C322	87-010-186-080		CAP,CHIP 4700P-50 K B
C779	87-010-401-080		CAP, ELECT 1-50V	C403	87-010-404-040		CAP, E 4.7-50 SME
C780	87-010-196-080		CHIP CAPACITOR,0.1-25	C405	87-010-182-080		C-CAP,S 2200P-50KB
C781	87-010-405-080		CAP, ELECT 10-50V	C407	87-010-403-080		CAP, ELECT 3.3-50
C782	87-010-405-080		CAP, ELECT 10-50V	C409	87-010-322-080		C-CAP,S 100P-50 J CH
C783	87-012-286-080		CAP, U 0.01-25	C411	87-A10-946-080		C-CAP,S 220P-100 J CH
C784	87-012-286-080		CAP, U 0.01-25	C413	87-010-260-080		CAP, ELECT 47-25V

REF. NO.	PART NO.	KANRI NO.	DESCRIPTION	REF. NO.	PART NO.	KANRI NO.	DESCRIPTION
C419	87-012-368-080		C-CAP,S 0.1-50 F	SW9	87-A90-248-019		SW,MICRO ESE11SH2CXQ
C421	87-010-186-080		C-CAP,S 4700P-50 K B	W001	82-ZM3-601-019		RBN,CORD,4P-75
C501	87-016-299-080		CAP,E 10-100 SME				
C502	87-012-368-080		C-CAP,S 0.1-50 F				
C503	87-016-299-080		CAP,E 10-100 SME				
							HEAD-1 C.B
CN101	87-A60-727-010		CONN,13P JL-R				
CN102	87-A60-727-010		CONN,13P JL-R				HEAD-2 C.B
R225	87-A00-262-080		RES,M/F 0.15-2W J				
R226	87-A00-262-080		RES,M/F 0.15-2W J	CON351	87-NF6-616-010		CONN ASSY,8P-RPB
R227	87-A00-262-080		RES,M/F 0.15-2W J				
							GEQ C.B
R228	87-A00-262-080		RES,M/F 0.15-2W J				
R239	87-A00-262-080		RES,M/F 0.15-2W J	C901	87-010-402-080		CAP, ELECT 2.2-50V
R242	87-A00-262-080		RES,M/F 0.15-2W J	C902	87-010-402-080		CAP, ELECT 2.2-50V
R325	87-A00-258-080		RES,M/F 0.22-1W J	C903	87-010-404-080		CAP, ELECT 4.7-50V
R326	87-A00-258-080		RES,M/F 0.22-1W J	C904	87-010-404-080		CAP, ELECT 4.7-50V
				C905	87-010-404-080		CAP, ELECT 4.7-50V
R327	87-A00-258-080		RES,M/F 0.22-1W J				
R328	87-A00-258-080		RES,M/F 0.22-1W J	C907	87-016-669-080		C-CAP,S 0.1-25 K B
R329	87-A00-258-080		RES,M/F 0.22-1W J	C908	87-016-669-080		C-CAP,S 0.1-25 K B
R340	87-A00-258-080		RES,M/F 0.22-1W J	C909	87-016-460-080		C-CAP,S 0.22-16 B
R427	87-A00-258-080		RES,M/F 0.22-1W J	C910	87-016-460-080		C-CAP,S 0.22-16 B
				C911	87-012-365-080		C-CAP,S 0.027-25VBK
R429	87-A00-258-080		RES,M/F 0.22-1W J				
R441	87-A00-258-080		RES,M/F 0.22-1W J	C912	87-012-365-080		C-CAP,S 0.027-25VBK
TH201	87-A91-042-080		C-THMS,100K 55001	C913	87-010-956-080		CHIP-CAP,S 0.068-25B
TH202	87-A91-042-080		C-THMS,100K 55001	C914	87-010-956-080		CHIP-CAP,S 0.068-25B
TH302	87-A91-042-080		C-THMS,100K 55001	C915	87-010-197-080		CAP, CHIP 0.01 DM
				C916	87-010-197-080		CAP, CHIP 0.01 DM
TH401	87-A91-042-080		C-THMS,100K 55001				
				C917	87-010-198-080		CAP, CHIP 0.022
				C918	87-010-198-080		CAP, CHIP 0.022
PT C.B				C919	87-010-183-080		C-CAP,S 2700P-50 B
				C920	87-010-183-080		C-CAP,S 2700P-50 B
C1	87-010-387-080		CAP,E 470-25 SME	C921	87-010-188-080		CAP,CHIP 6800P
C3	87-099-043-010		CONN,2P V WHT EH				
C4	87-099-043-010		CONN,2P V WHT EH	C922	87-010-188-080		CAP,CHIP 6800P
C5	87-A11-148-080		CAP,TC U 0.1-50 Z F	C923	87-010-178-080		CHIP CAP 1000P
C6	87-A11-148-080		CAP,TC U 0.1-50 Z F	C924	87-010-178-080		CHIP CAP 1000P
				C925	87-010-182-080		C-CAP,S 2200P-50 B
C8	87-016-520-090		CAP,E 3300-65	C926	87-010-182-080		C-CAP,S 2200P-50 B
C9	87-016-520-090		CAP,E 3300-65				
C10	87-010-917-090		CAP,E 3300-50 M SMG	C927	87-010-112-080		CAP, ELECT 100-16V
C11	87-010-917-090		CAP,E 3300-50 M SMG	C928	87-010-196-080		CHIP CAPACITOR,0.1-25
				C929	87-010-322-080		C-CAP,S 100P-50 CH
C12	87-A11-148-080		CAP,TC U 0.1-50 ZF	C930	87-010-322-080		C-CAP,S 100P-50 CH
C13	87-A11-148-080		CAP,TC U 0.1-50 ZF	C931	87-010-322-080		C-CAP,S 100P-50 CH
C31	87-010-403-080		CAP, ELECT 3.3-50V				
CN1	87-A60-851-010		CONN,9P V VH	PN901	87-A60-546-010		CONN,11P H GRY TUC-P11X-C1
CN3	87-099-043-010		CONN,2P V WHT EH				
CN4	87-099-043-010		CONN,2P V WHT EH				
△ PR1	87-A91-276-080		FUSE,125 MA 125V F251				MUTE C.B
△ PR2	87-026-691-080		FUSE,10A 125V 251	C885	87-010-182-080		C-CAP,S 2200P-50 B
△ PR3	87-026-691-080		FUSE,10A 125V 251	C886	87-010-182-080		C-CAP,S 2200P-50 B
△ PR4	87-026-691-080		FUSE,10A 125V 251	C887	87-010-401-080		CAP,E 1-50V
				C888	87-010-401-080		CAP,E 1-50V
△ PR5	87-026-691-080		FUSE,10A 125V 251	C891	87-010-993-080		C-CAP,S 0.056-25 B
△ PT1	8Z-NFS-601-010		PT,U ZNF-25				
△ PT2	8Z-NF8-661-010		PT,SUB ZNF-8(U)	C892	87-010-993-080		C-CAP,S 0.056-25 B
△ RY2	87-A90-976-010		RELAY,AC12V SDT-S-112LMR	C893	87-010-196-080		CHIP CAPACITOR,0.1-25
△ T1	87-A60-317-010		TERMINAL, 1P MSC	C894	87-010-196-080		CHIP CAPACITOR,0.1-25
				CN802	87-A60-688-010		CONN, 4P H GRY TUC-PO4X-CL
△ T2	87-A60-317-010		TERMINAL, 1P MSC	CN891	87-099-043-010		CONN, 2P H EH
				CN892	87-049-919-010		CONN, 3P EH V WHT
				CNA801	8Z-NFT-602-010		CONN ASSY,3P MUTE
DECK C.B				L981	87-003-383-010		COIL,1 UH-S
				L982	87-003-383-010		COIL,1 UH-S
CON105	87-099-756-019		CONN, 15P 9604 S F				
SFR1	87-024-581-019		SFR,3.3K DIA 6H				
SOL1	82-ZM1-618-410		SOL ASSY, 27				
SOL2	82-ZM1-618-410		SOL ASSY, 27				
SW1	87-A90-248-019		SW,MICRO ESE11SH2CXQ				
SW2	87-A90-248-019		SW,MICRO ESE11SH2CXQ				
SW3	87-A90-248-019		SW,MICRO ESE11SH2CXQ				
SW4	87-036-110-010		SW,MICRO SPPB62				
SW5	87-036-110-010		SW,MICRO SPPB62				
SW6	87-036-110-010		SW,MICRO SPPB62				
SW8	87-A90-248-019		SW,MICRO ESE11SH2CXQ				

TRANSISTOR ILLUSTRATION



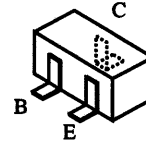
E C B

2SC4115



G D S

2SK3053



2SD1306E
2SA1514K
2SC3906KR
KTA1298Y

ADJUSTMENT

< FRONT SECTION >

14. μ -CON OSC Adjustment

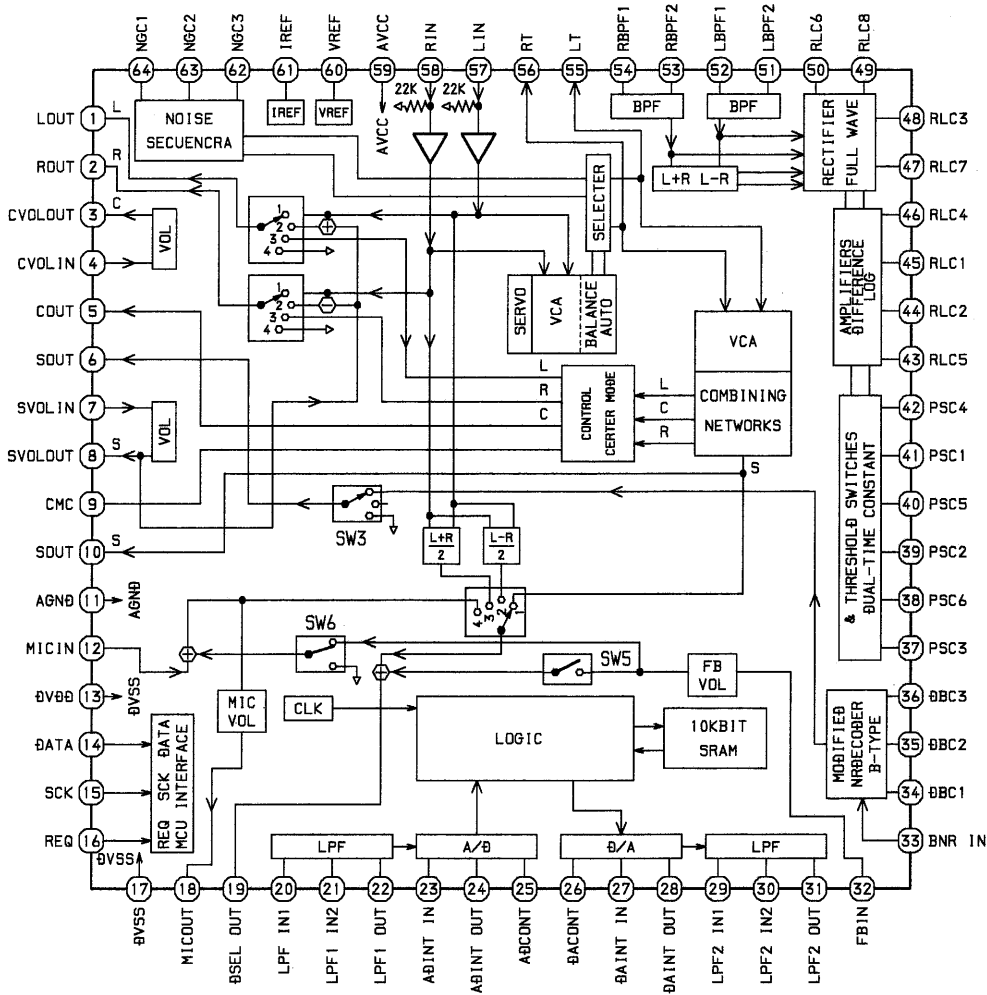
Settings : • Test point : TP11

• Adjustment location : L101

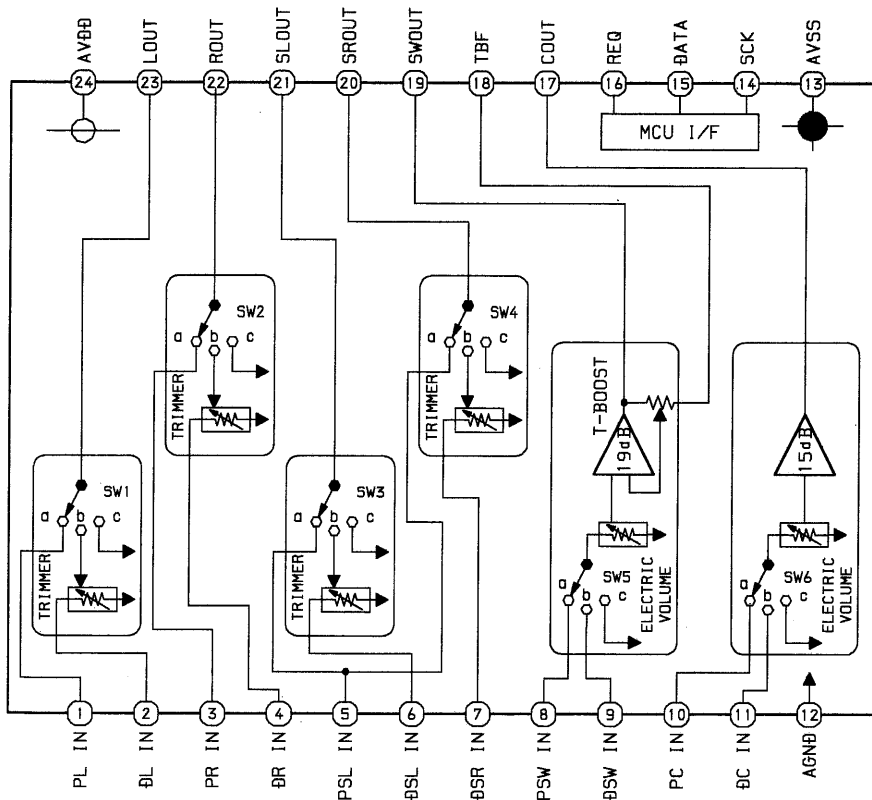
Method : Insert AC plug with pressing TUNER function key.
Adjust L101 so that the frequency across the test point is $208.82\text{Hz} \pm 0.2\text{Hz}$.

IC BLOCK DIAGRAM - 1

IC, M62463AFP

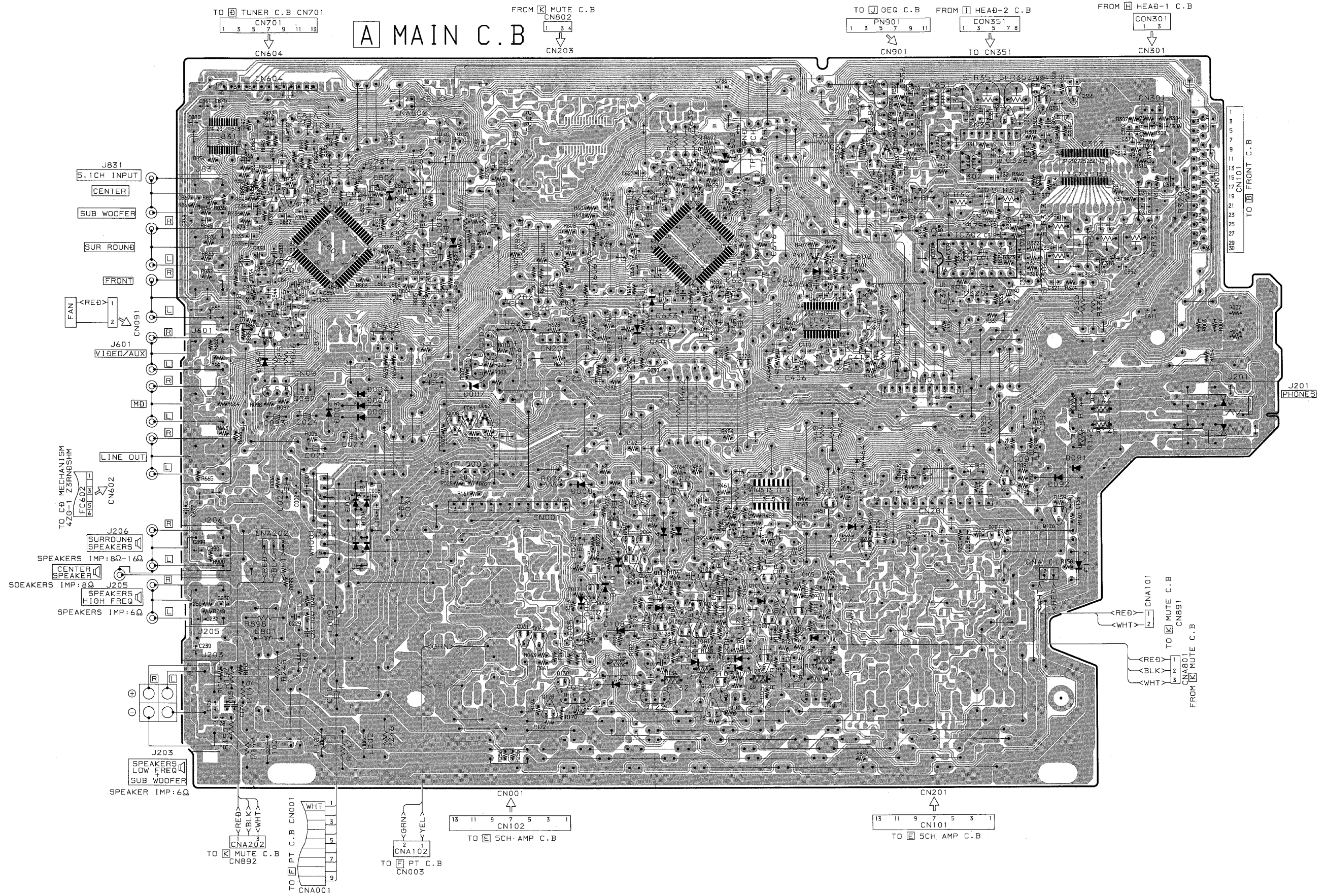


IC, M62491FP

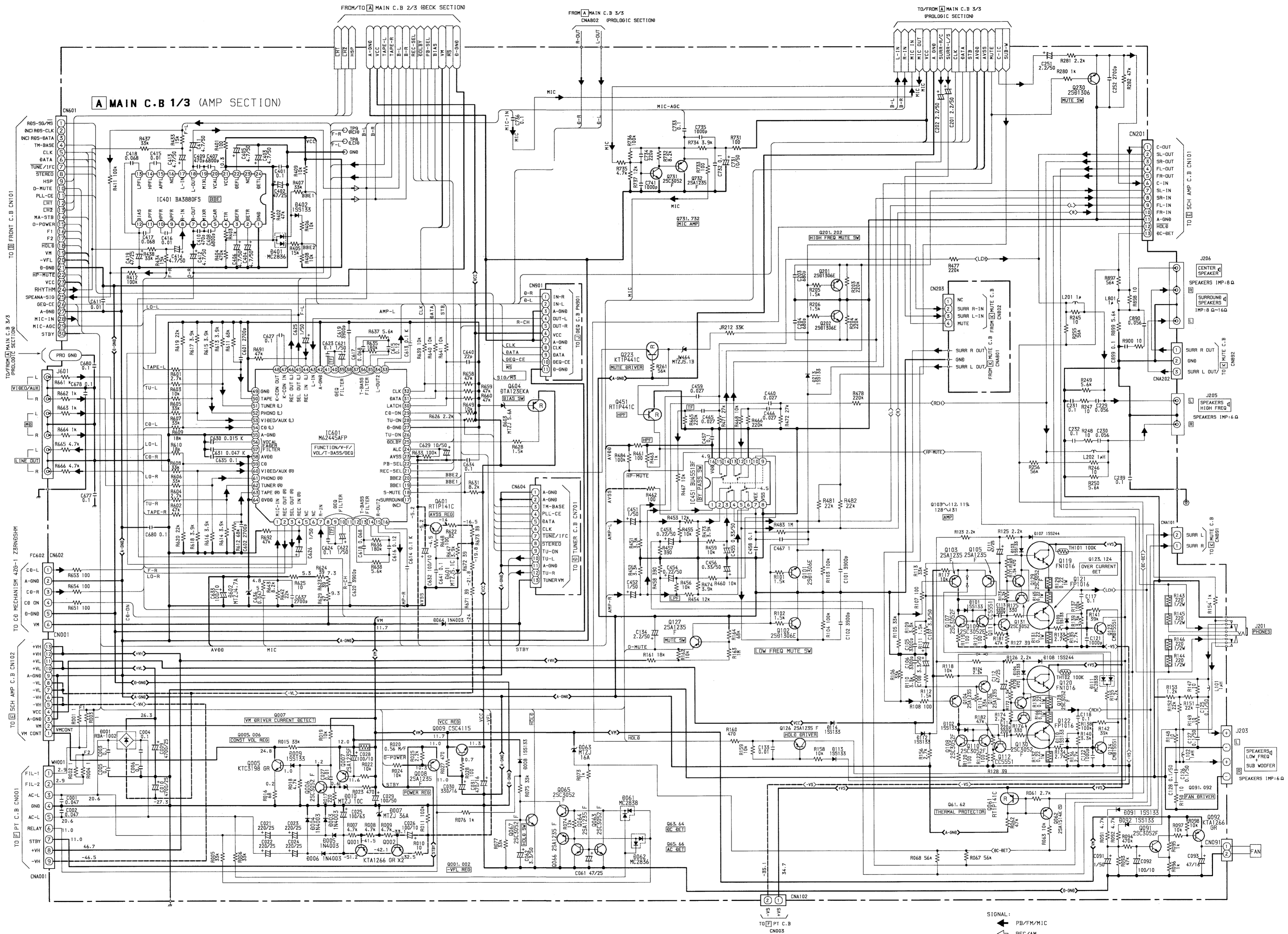


1 2 3 4 5 6 7 8 9 10 11 12 13 14

A
B
C
D
E
F
G
H
I
J

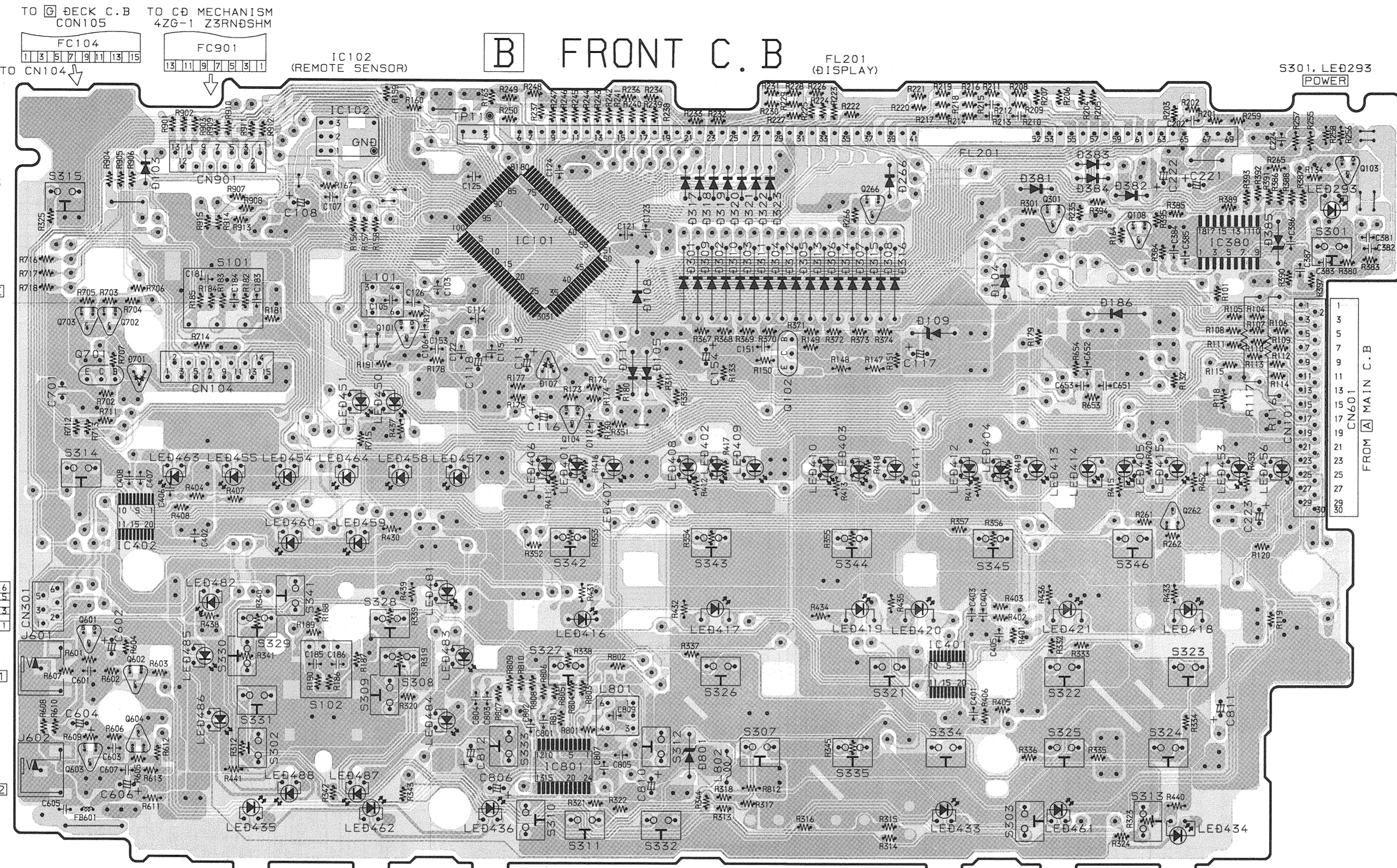


SCHEMATIC DIAGRAM - 1 (MAIN 1/3 : AMP SECTION)

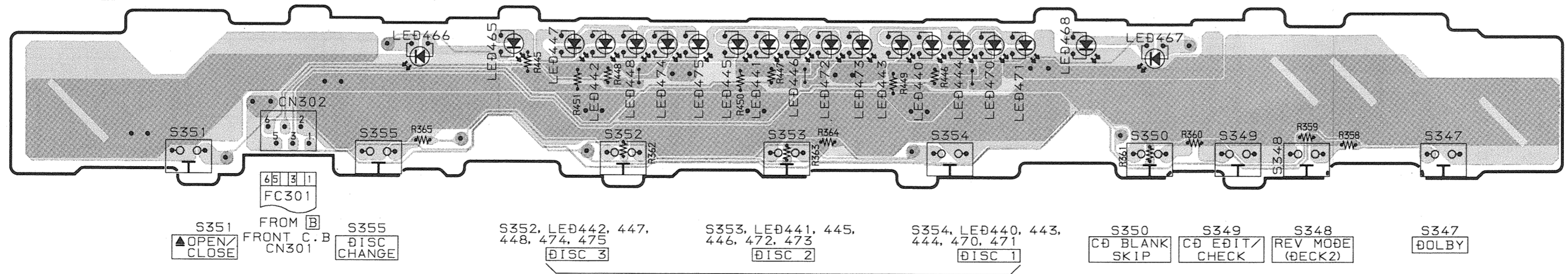


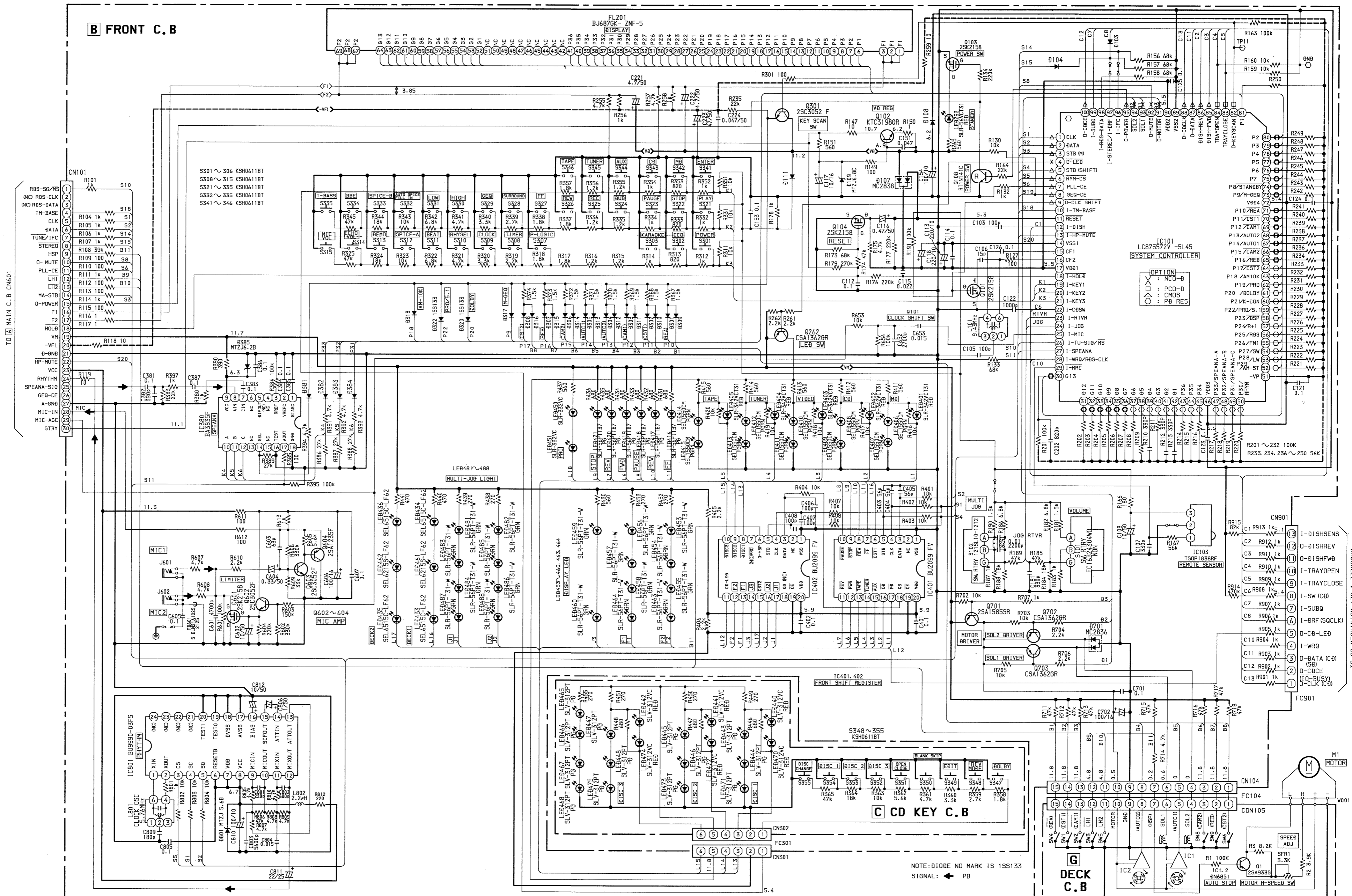
1 2 3 4 5 6 7 8 9 10 11 12 13 14 15 16 17 18 19 20

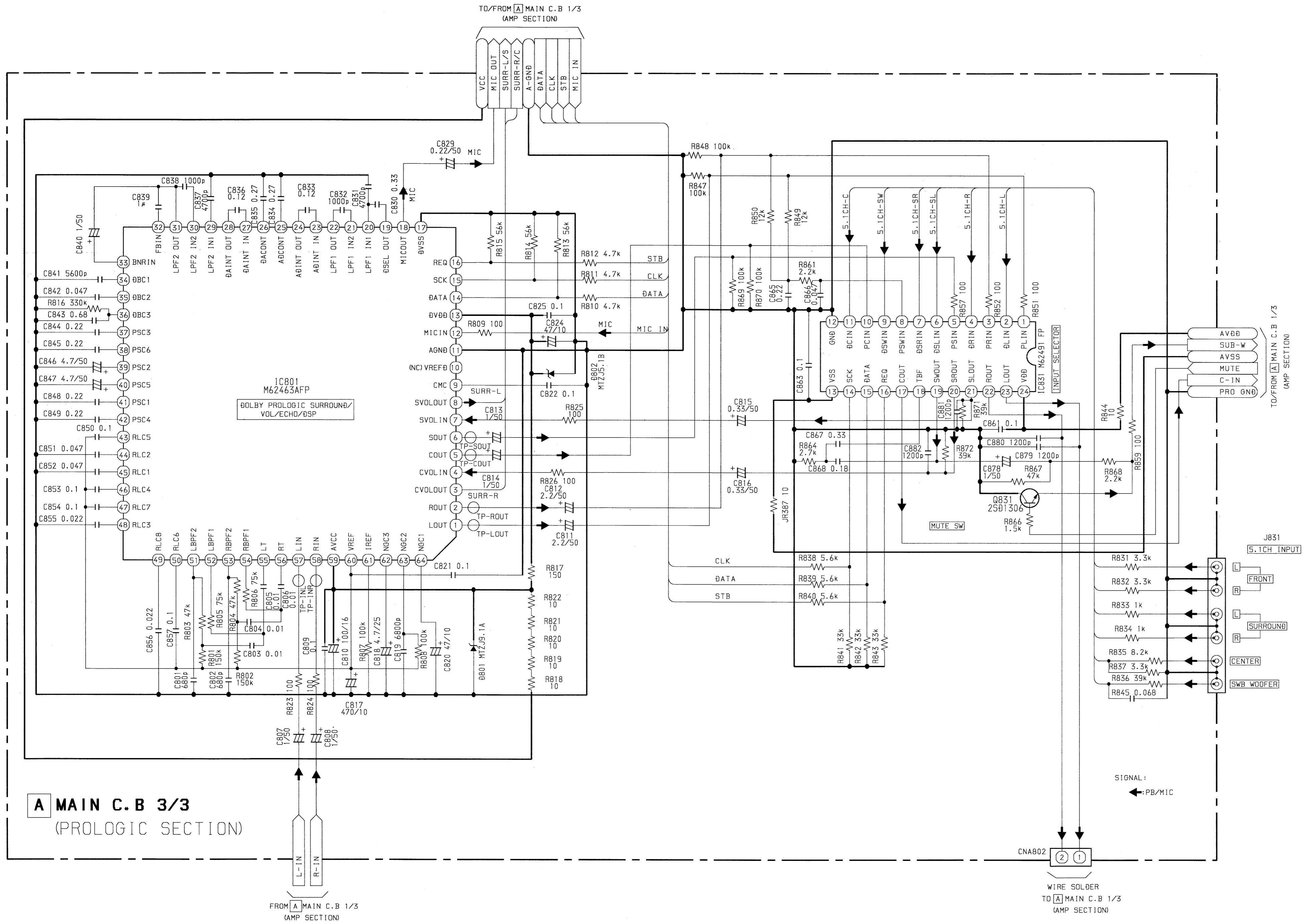
A
B
C
D
E
F
G
H
I
J
K
L
M
N



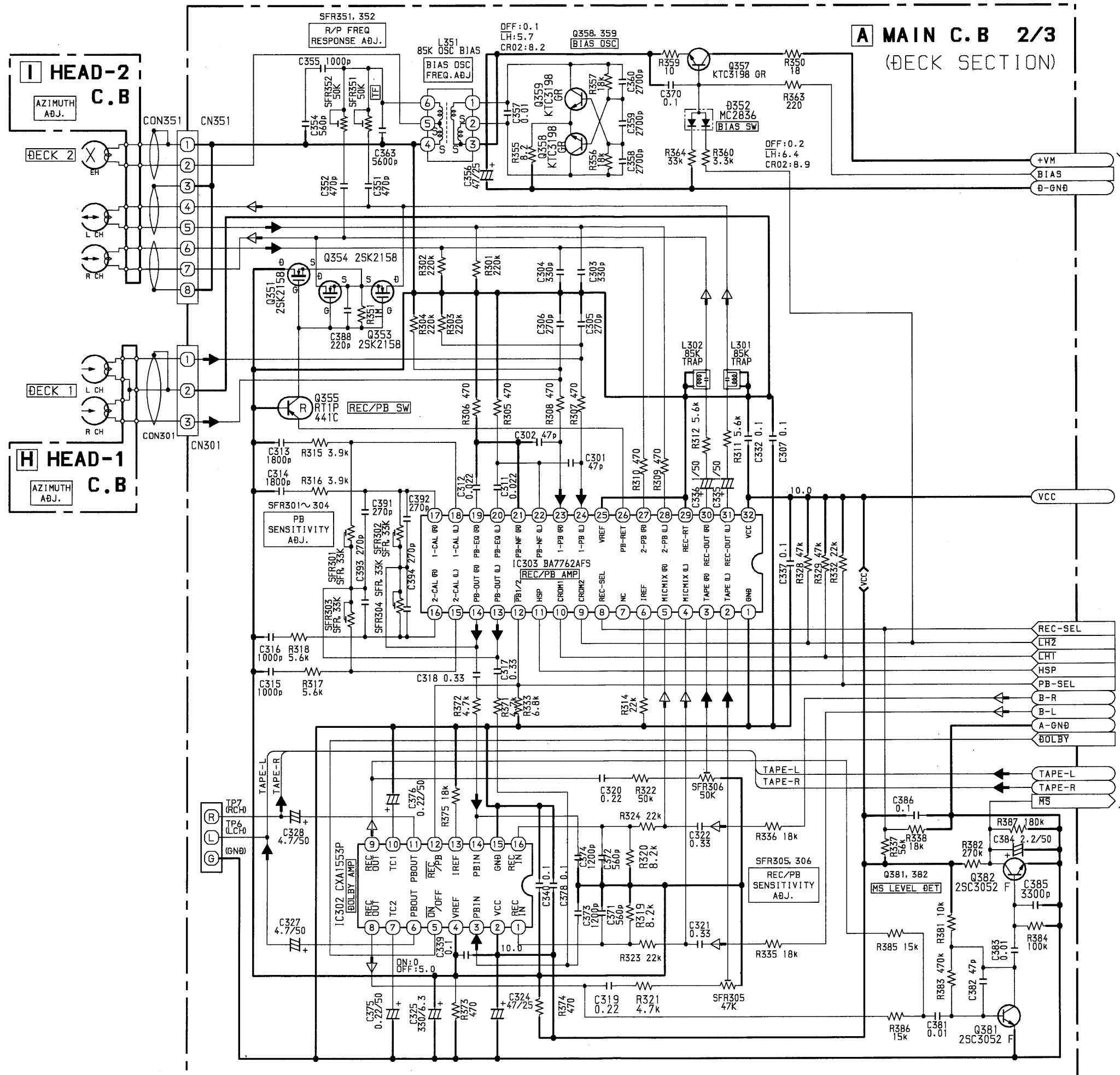
C CD KEY C.B





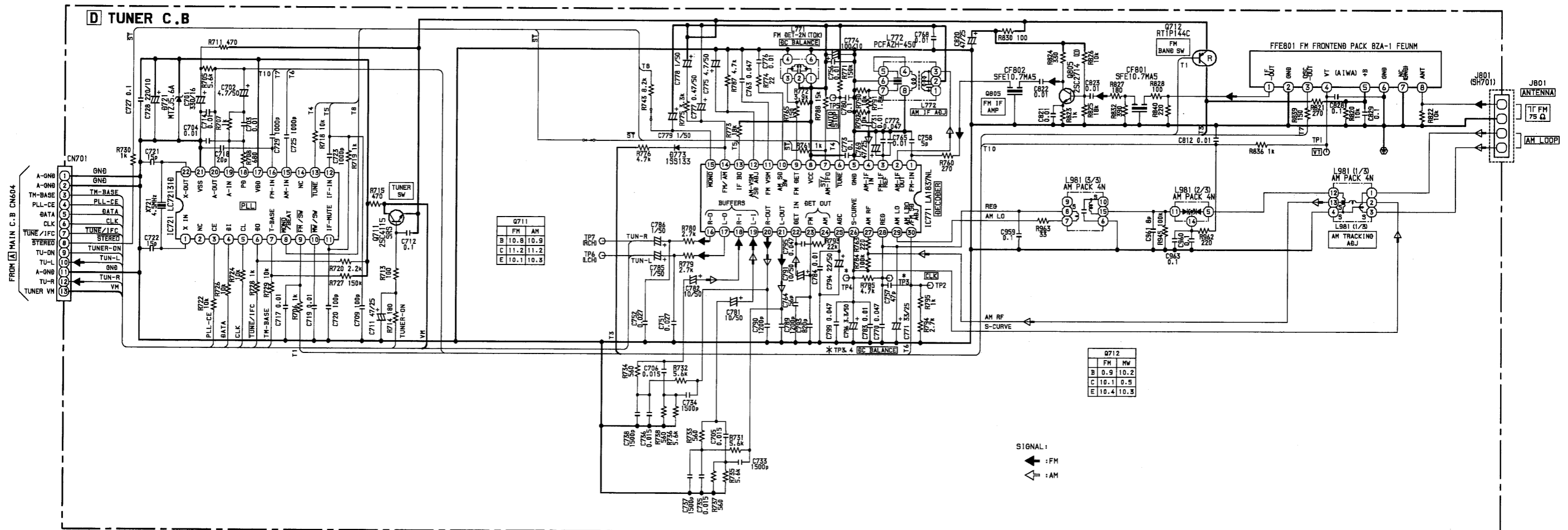


SCHMATIC DIAGRAM - 4 (MAIN 2/3 : DECK SECTION)



TO/FROM [A] MAIN C.B 1/3
(LAMP SECTION)

SCHEMATIC DIAGRAM - 5 (TUNER)



1 2 3 4 5 6 7 8 9 10 11 12 13 14

A

B

C

D

E

F

G

H

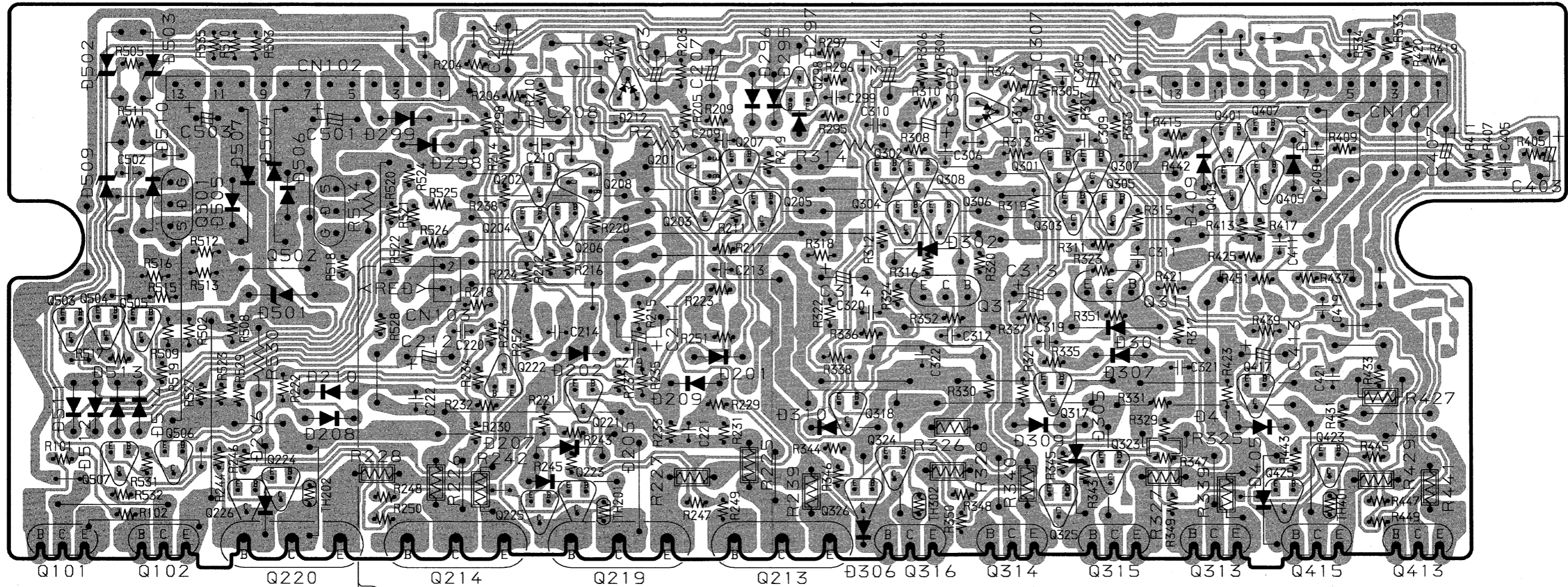
I

J

FROM [A] MAIN C.B
CN001
13 11 9 7 5 3 1

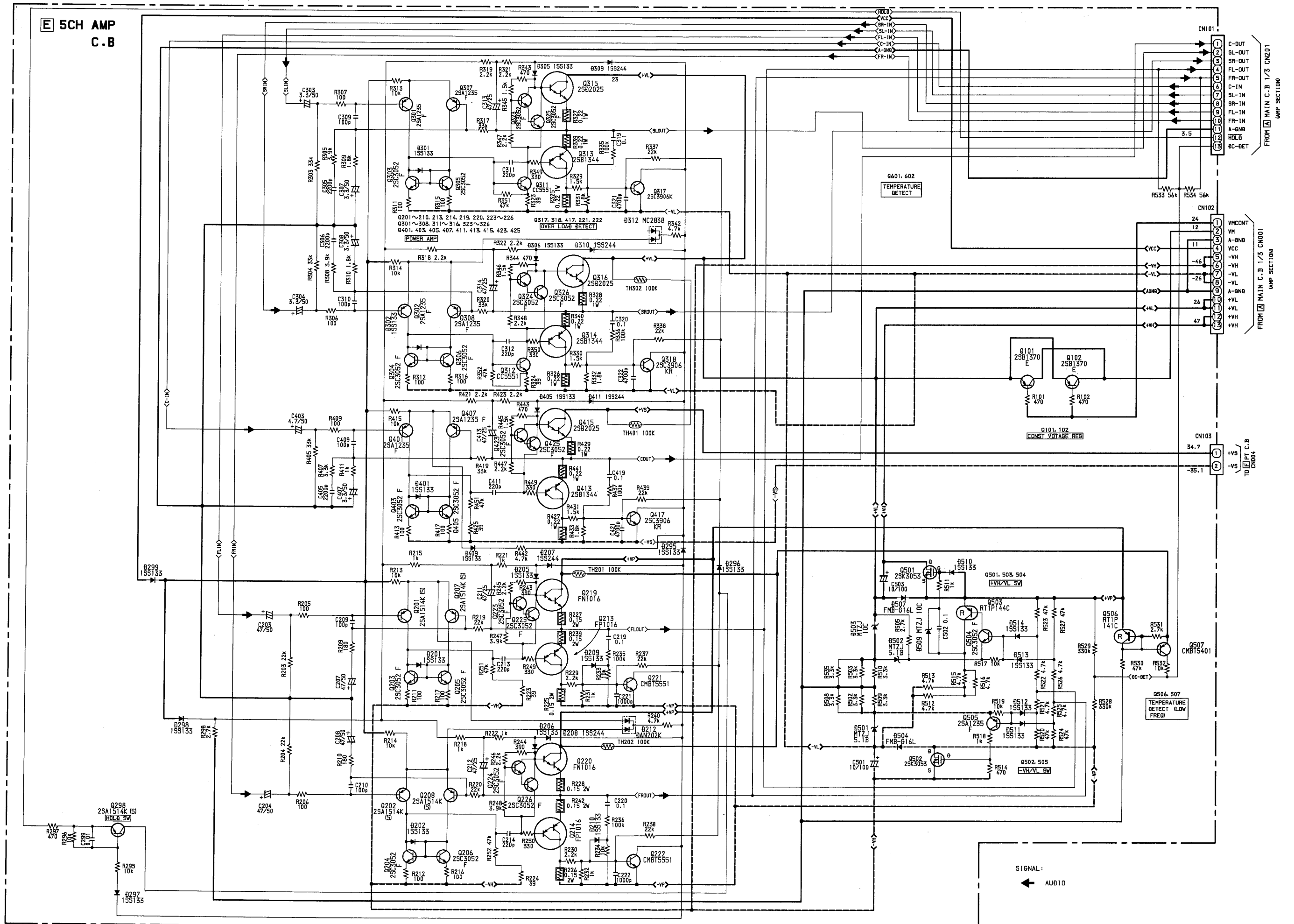
[E] 5CH AMP C.B

FROM [A] MAIN C.B
CN201
13 11 9 7 5 3 1



TO [E] PT C.B
CN004

SCHEMATIC DIAGRAM - 6 (5CH AMP)



WIRING - 5 (PT)

1 2 3 4 5 6 7

A

B

C

D

E

F

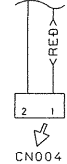
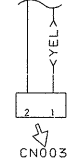
G

H

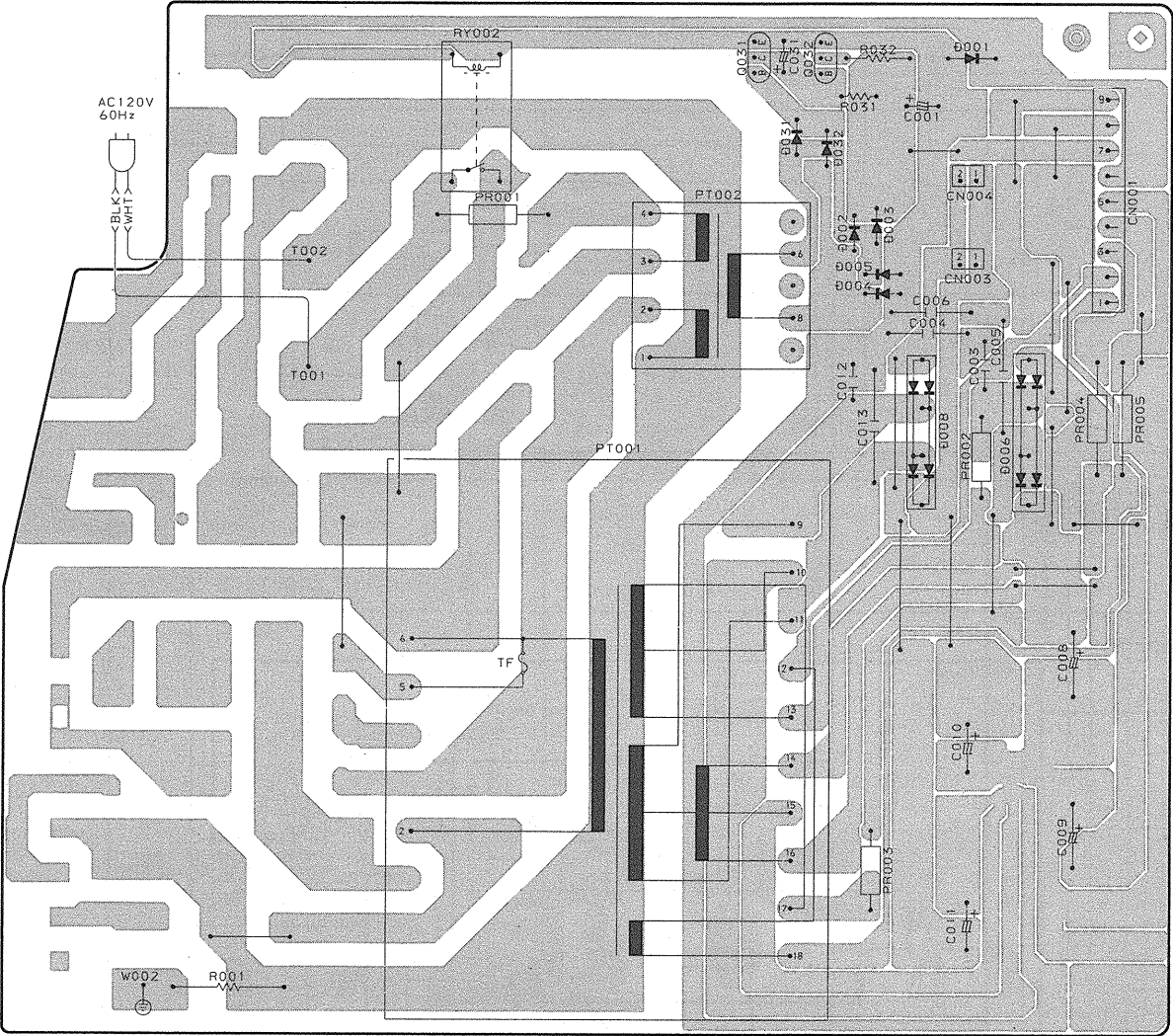
I

J

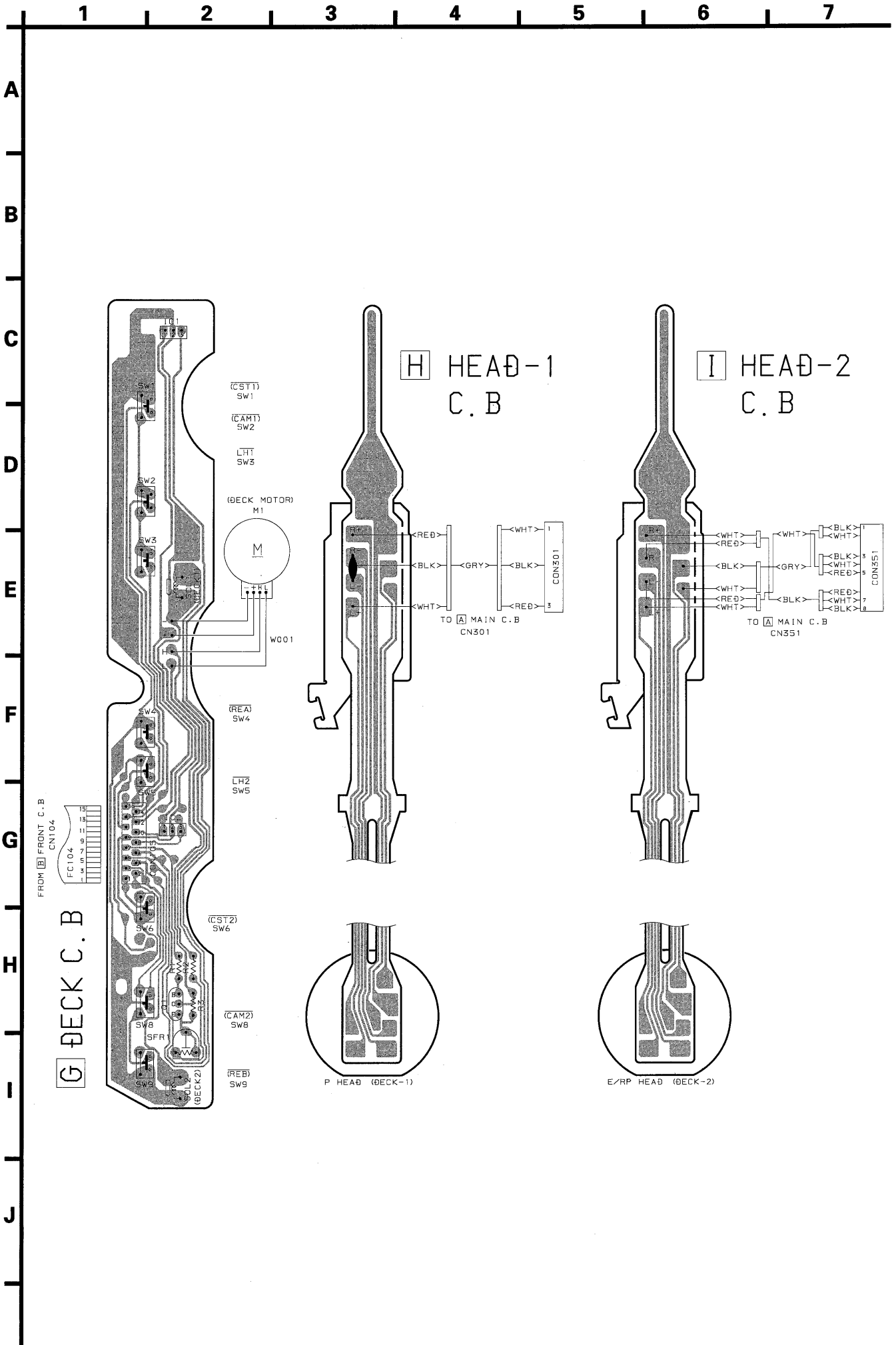
FROM [A] MAIN C.B CNA102 FROM [E] SCH AMP C.B CN103



[F] PT C.B



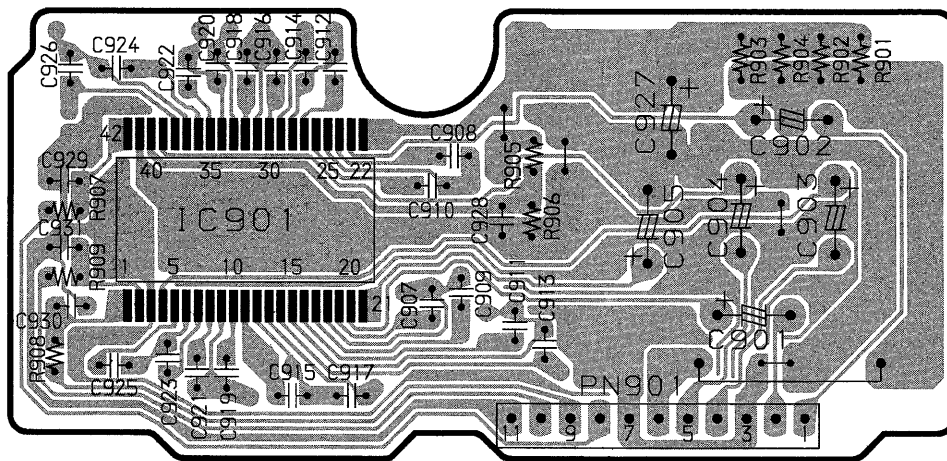
WIRING - 6 (DECK)



1 2 3 4 5 6 7

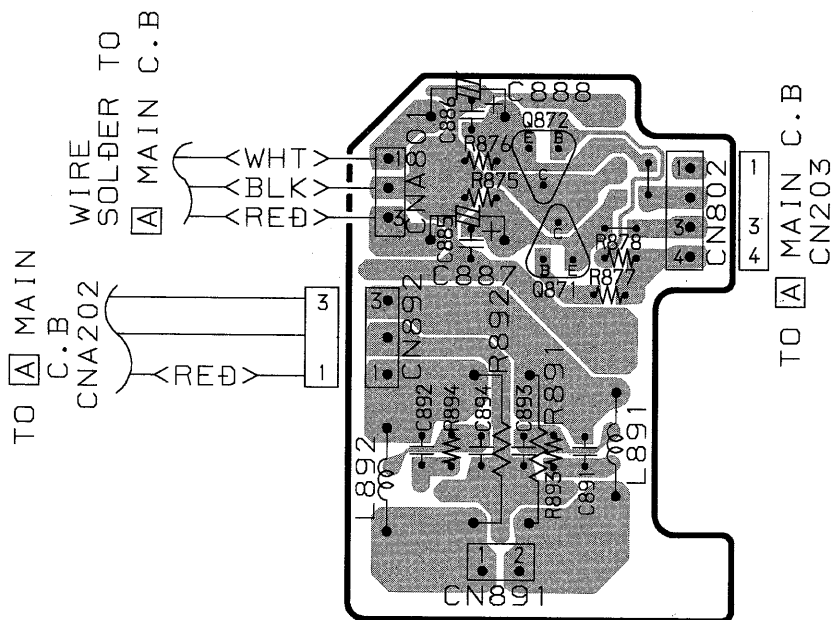
A
B
C
D
E
F
G
H
I
J

J GEQ C.B



11 9 7 5 3 1
CN901
FROM **A** MAIN C.B

K MUTE C.B

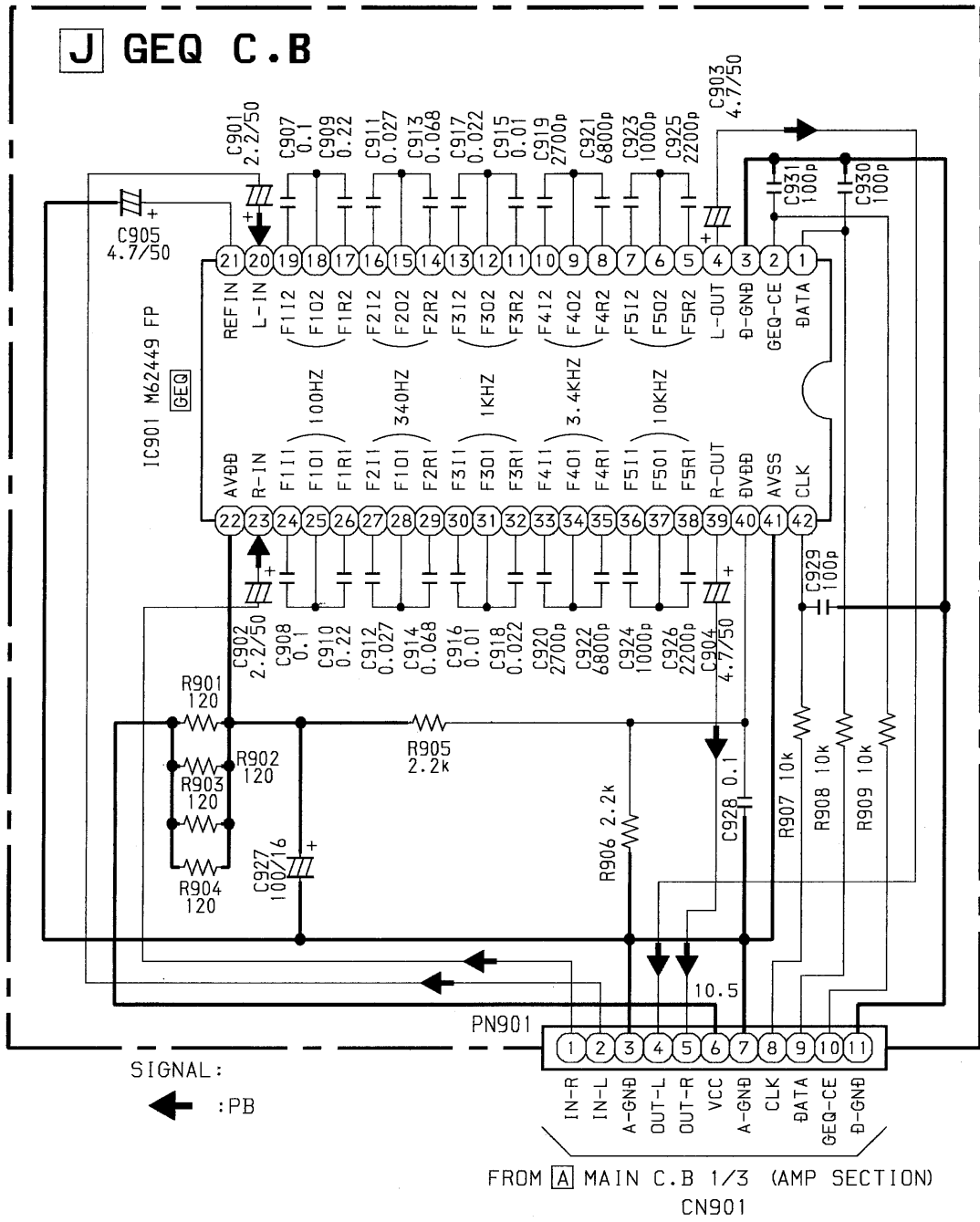


TO **A** MAIN C.B
CNA202
(RED) 1 3

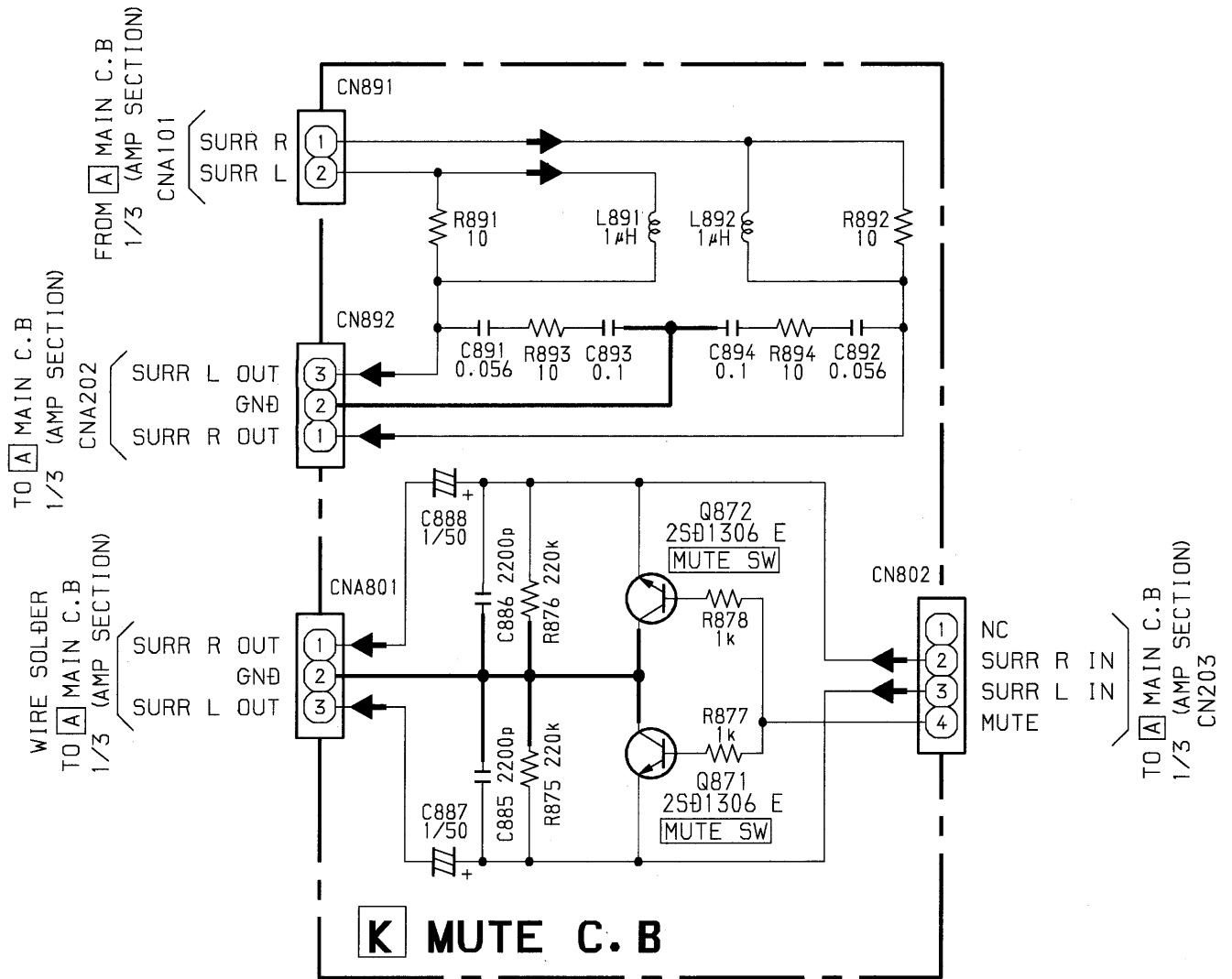
TO **A** MAIN C.B
CN203
1 3 4

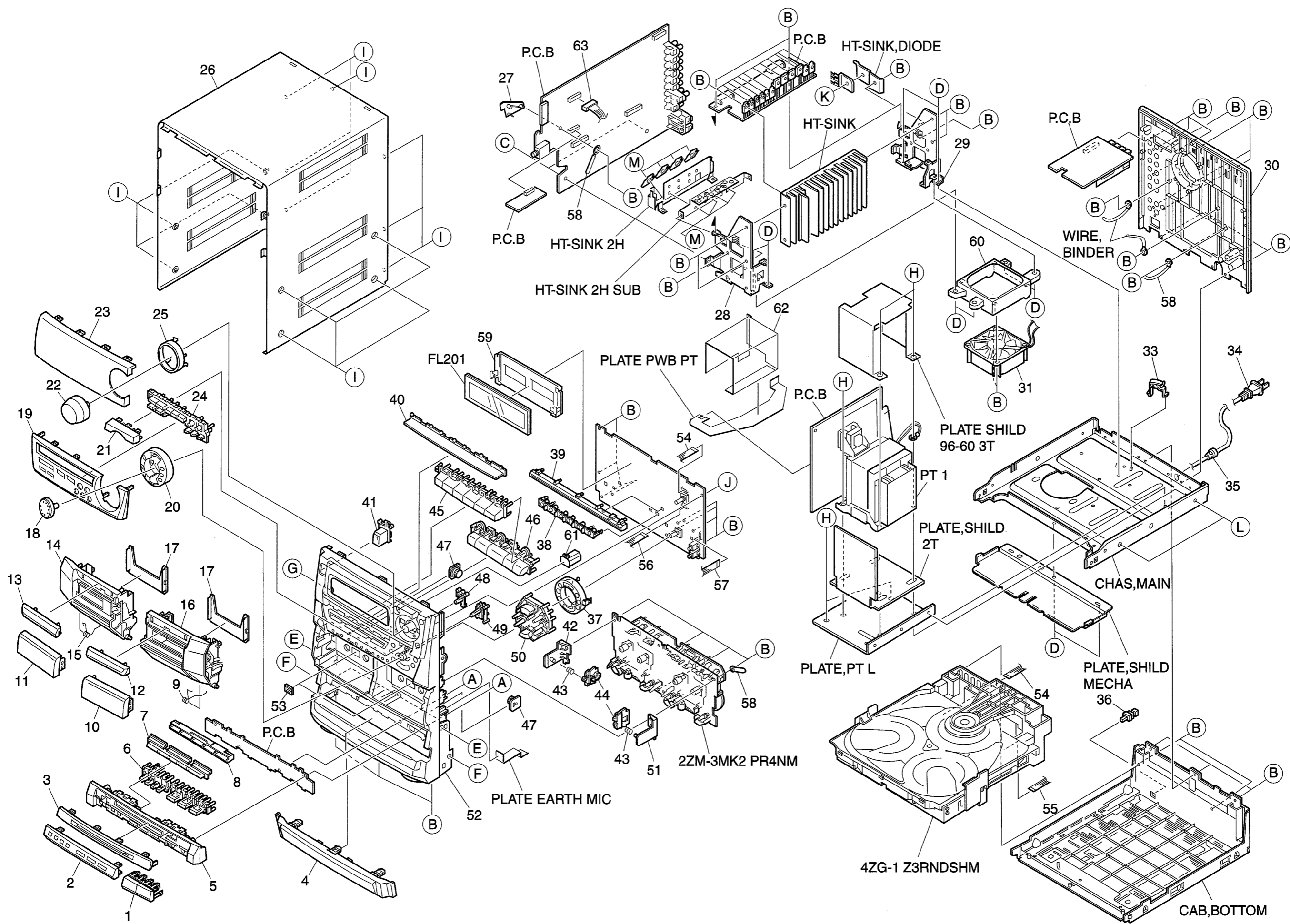
1 2
(RED)
FROM **A** MAIN C.B
CNA101

SCHEMATIC DIAGRAM – 8 (GEQ)



SCHEMATIC DIAGRAM - 9 (MUTE)





MECHANICAL PARTS LIST 1 / 1

If can't understand for Description please kindly refer to "REFERENCE NAME LIST".

REF. NO.	PART NO.	KANRI NO.	DESCRIPTION	REF. NO.	PART NO.	KANRI NO.	DESCRIPTION
1	8Z-NF5-022-010		KEY, OPEN	42	87-NF4-216-010		HLDL, LOCK 1
2	8Z-NF5-073-010		PANEL, DISC	43	86-NF9-224-010		SPR-C, LOCK
3	8Z-NF5-012-010		PANEL, CD	44	82-NF5-229-010		PLATE, LOCK
4	8Z-NF5-006-010		PANEL, TRAY	45	8Z-NFS-015-010		KEY, FUN 5.1CH
5	8Z-NF5-057-010		PANEL, DIRECT	46	8Z-NF5-035-010		KEY, ASSY OPE
6	8Z-NF5-030-010		KEY, DISC	47	87-NF8-220-010		DMPR, 150
7	8Z-NF5-027-010		REFLECTOR, CD	48	8Z-NF5-021-010		KEY, MIC
8	8Z-NF5-203-010		GUIDE, CD	49	8Z-NF5-018-010		KEY, ECHO
9	8Z-NF5-219-010		SPR-T, EJECT 2 (SIN)	50	8Z-NF5-050-010		KEY, ASSY JOG
10	8Z-NF5-002-010		BOX, CASS 1	51	87-NF4-217-110		HLDL, LOCK 2
11	8Z-NF5-003-010		BOX, CASS 2	52	8Z-NFS-001-010		CABI, FR U
12	8Z-NF5-008-010		PANEL, CASS 2	54	88-913-551-110		FF-CABLE, 13P 1.25 550MM
13	8Z-NF5-007-010		PANEL, CASS 1	55	88-906-601-110		FF-CABLE, 6P 1.25 600MM
14	8Z-NF5-010-010		WINDOW, CASS 1	56	88-915-181-110		FF-CABLE, 15P 1.25
15	8Z-NF5-218-010		SPR-T, EJECT 1 (SIN)	57	88-906-301-110		FF-CABLE, 6P-1.25
16	8Z-NF5-011-010		WINDOW, CASS 2	58	87-064-185-010		HLDL, WIRE
17	86-NF6-061-010		REFLECTOR, CASS	59	88-NF5-204-010		GUIDE, FL
18	8Z-NF5-016-010		KNOB, RTRY JOG	60	8Z-NF5-219-010		HLDL, FAN
19	8Z-NFS-002-010		PANEL, FR PRO	61	8Z-NFS-201-010		GUIDE, PRO
20	8Z-NF5-015-010		PANEL, JOG	62	8Z-NF5-221-010		COVER, PWB PT
21	8Z-NF5-042-010		PANEL, FUN	63	87-NF6-616-010		CONN ASSY, 8P RPB
22	8Z-NF5-014-010		KNOB, RTRY VOL	A	87-067-758-010		BVT2+3-12 W/O SLOT
23	8Z-NFS-007-010		WINDOW, DISPLAY PRO	B	87-067-703-010		TAPPING SCREW, BVT2+3-10
24	8Z-NFS-012-010		KEY, PRO	C	87-NF4-224-010		S-SCREW, IT3B+3-8 CU
25	8Z-NF5-013-010		RING, VOL	D	87-067-688-010		BVTT+3-6
26	8Z-NF5-004-010		CABI, STEEL	E	87-591-094-410		TAPPING SCREW, QIT+3-6
27	88-NF5-208-010		HLDL, PWB-M N	F	87-721-097-410		QT2+3-12 GLD
28	8Z-NF5-214-010		HLDL, HT F	G	87-723-096-410		QT2+3-10W/O SLOT BL
29	8Z-NF5-215-010		HLDL, HT R	H	87-078-191-010		S-SCREW, IT+4-10
30	8Z-NFS-006-010		CABI, REAR USTNM	I	87-067-641-010		UTT2+3-8 (W/O SLOT) BL
31	87-A91-314-010		FAN, 3110GL-B4W-B34-H02	J	87-067-584-010		TAPPING SCREW, BVT2+3-6
33	87-NF4-221-010		HLDL, CABLE	K	87-067-579-010		TAPPING SCREW, BVT2+3-8
△ 34	87-A80-110-010		AC CORD ASSY, U SPT-2W	L	87-591-095-410		TAPPING SCREW, QIT+3-8 (GLD)
35	87-085-185-010		BUSHING, AC CORD (E)				
36	84-ZG1-245-210		CAP, OPTICAL				
37	8Z-NF5-202-010		GUIDE, JOG				
38	8Z-NF5-208-010		GUIDE, OPE				
39	8Z-NF5-201-010		GUIDE, FUN				
40	8Z-NF5-026-010		REFLECTOR, FUN				
41	8Z-NF5-020-010		KEY, ASSY POWER				

COLOR NAME TABLE

Basic color symbol	Color	Basic color symbol	Color	Basic color symbol	Color
B	Black	C	Cream	D	Orange
G	Green	H	Gray	L	Blue
LT	Transparent Blue	N	Gold	P	Pink
R	Red	S	Silver	ST	Titan Silver
T	Brown	V	Violet	W	White
WT	Transparent White	Y	Yellow	YT	Transparent Yellow
LM	Metallic Blue	LL	Light Blue	GT	Transparent Green
LD	Dark Blue	DT	Transparent Orange		

**SPEAKER PARTS LIST
SX-R275 (YUSTNC, YUSTNL, YUSTNP)**

If can't understand for Description please kindly refer to "REFERENCE NAME LIST".

REF. NO.	PART NO.	KANRI NO.	DESCRIPTION
1	87-YS6-002-010		SPKR, CORD Y
2	87-YS6-601-010		SPKR, 100
3	87-YS6-903-010		IB, YU (ESF) O<YUSTNC>
3	87-YS6-904-010		IB, YU (ESF) P<YUSTNP>
3	87-YS6-913-010		IB, YU (ESF) T<YUSTNL>
4	87-YS1-001-010		CABI, REAR
5	87-YS1-004-010		GRILLE, FRAME ASSY
6	81-VSA-009-010		CORD, BUSH
7	87-010-384-010		CAP, E 100-25 M SME

**SPEAKER PARTS LIST
SX-C605 (YUSTNC, YUSTNL)**

If can't understand for Description please kindly refer to "REFERENCE NAME LIST".

REF. NO.	PART NO.	KANRI NO.	DESCRIPTION
1	83-NSM-010-010		SPKR, CORD
2	87-YS7-602-010		SPKR, 100<YUSTNC>
2	87-YS7-604-010		SPKR, 100<YUSTNL>
3	87-YS7-903-010		IB, YU (ESF) O<YUSTNC>
4	87-YS3-001-010		PANEL, FR ST
5	87-YS3-002-010		PANEL, REAR ST
6	81-VSA-009-010		CORD, BUSH
8	87-YS3-003-010		GRILLE, FRAME ASSY

ACCESSORIES / PACKAGE LIST

If can't understand for Description please kindly refer to "REFERENCE NAME LIST".

REF. NO.	PART NO.	KANRI NO.	DESCRIPTION
1	8Z-NFS-903-010		IB,U (ESF) M
5	8Z-NFV-702-010		RC UNIT,RC-ZAS05 (MITSUMI)

REFERENCE NAME LIST

ELECTRICAL SECTION

DESCRIPTION	REFERENCE NAME
ANT	ANTENNAS
C-	CHIP
C-CAP	CAP, CHIP
C-CAP TN	CAP, CHIP TANTALUM
C-COIL	COIL, CHIP
C-DI	DIODE, CHIP
C-DIODE	DIODE, CHIP
C-FET	FET, CHIP
C-FOTR	FILTER, CHIP
C-JACK	JACK, CHIP
C-LED	LED, CHIP
C-RES	RES, CHIP
C-SFR	SFR, CHIP
C-SLIDE SW	SLIDE SWITCH, CHIP
C-SW	SWITCH, CHIP
C-TR	TRANSISTOR, CHIP
C-VR	VOLUME, CHIP
C-ZENER	ZENER, CHIP
CAP, CER	CAP, CERA-SOL
CAP, E	CAP, ELECT
CAP, M/F	CAP, FILM
CAP, TC	CAP, CERA-SOL
CAP, TC-U	CAP, CERA-SOL SS
CAP, TN	CAP, TANTALUM
CERA FIL	FILTER, CERAMIC
CF	FILTER, CERAMIC
DL	DELAY LINE
E/CAP	CAP, ELECT
FILT	FILTER
FLTR	FILTER
FUSE RES	RES, FUSE
MOT	MOTOR
P-DIODE	PHOTO DIODE
P-SNSR	PHOTO SENSER
P-TR	PHOTO TRANSISTOR
POLY VARI	VARIABLE CAPACITOR
PPCAP	CAP, PP
PT	POWER TRANSFORMER
PTR, RES	PTR, MELF
RC	REMOTE CONTROLLER
RES NF	RES, NON-FLAMMABLE
RESO	RESONATOR
SHLD	SHIELD
SOL	SOLENOID
SPKR	SPEAKER
SW, LVR	SWITCH, LEVER
SW, RTRY	SWITCH, ROTARY
SW, SL	SWITCH, SLIDE
TC CAP	CAP, CERA-SOL
THMS	THERMISTOR
TR	TRANSISTOR
TRIMER	CAP, TRIMMER
TUN-CAP	VARIABLE CAPACITOR
VIB, CER	RESONATOR, CERAMIC
VIB, XTAL	RESONATOR, CRYSTAL
VR	VOLUME
ZENER	DIODE, ZENER

MECHANICAL SECTION

DESCRIPTION	REFERENCE NAME
ADHESHIVE	SHEET ADHESHIVE
AZ	AZIMUTH
BAR-ANT	BAR-ANTENNA
BAT	BATTERY
BATT	BATTERY
BRG	BEARING
BTN	BUTTON
CAB	CABINET
CASS	CASSETTE
CHAS	CHASSIS
CLR	COLLAR
CONT	CONTROL
CRSR	CURSOR
CU	CUSHION
CUSH	CUSHION
DIR	DIRECTION
DUBB	DUBBING
FL	FRONT LOADING
FLY-WHL	FLYWHEEL
FR	FRONT
FUN	FUNCTION
G-CU	G-CUSHION
HDL	HANDOL
HIMERON	CLOTH
HINGE, BAT	HINGE, BATTERY
HLDR	HOLDER
HT-SINK	HEAT SINK
IB	INSTRUCTION BOOKLET
IDLE	IDLER
IND, L-R	INDICATOR, L-R
KEY, CONT	KEY, CONTROL
KEY, PRGM	KEY, PROGRAM
KNOB, SL	KNOB, SLIDE
LBL	LABEL
LID, BATT	LID, BATTERY
LID, CASS	LID, CASSETTE
LVR	LEVER
P-SP	P-SPRING
PANEL, CONT	PANEL, CONTROL
PANEL, FR	PANEL, FRONT
PRGM	PROGRAM
PULLY, LOAD MO	PULLY, LOAD MOTOR
RBN	RIBBON
S-	SPECIAL
SEG	SEGMENT
SH	SHEET
SHLD-SH	SHIELD-SHEET
SL	SLIDE
SP	SPRING
SP-SCREW	SPECIAL-SCREW
SPACER, BAT	SPACER, BATTERY
SPR	SPRING
SPR-P	P-SPRING
SPR-PC-PUSH	P-SPRING, C-PUSH
T-SP	T-SPRING
TERM	TERMINAL
TRIG	TRIGGER
TUN	TUNING
VOL	VOLUME
W	WASHER
WHL	WHEEL
WORM-WHL	WORM-WHEEL

サービス技術ニュース	
番号	連絡内容
G-	-
G-	-
G-	-

アイワ株式会社
AIWA CO., LTD.

9301978, 931261

Tokyo Japan