



NSX-T99 LH
NSX-T99E HA

SERVICE MANUAL

COMPACT DISC
STEREO CASSETTE RECEIVER

BASIC CD MECHANISM: 6ZG-1 ZRNDM
BASIC TAPE MECHANISM: 2ZM-3MK2 PR4NM

- Replace this Service manual with "Revision Publishing" when it is issued.

aiwa
S/M Code No. 09-002-426-5T1

SIMPLE

DATA

ELECTRICAL MAIN PARTS LIST - 1/9

NOTE: The characters in the suffix column indicate the part usage.

REF.NO	PARTS NO.	KANRI NO.	DESCRIPTION	SUFFIX
C	603	87-010-112-040	CAP,E 100-16	AB
C	602	87-010-186-080	CAP,CHIP 4700P	AB
C	601	87-010-196-080	CHIP CAPACITOR,0.1-25	AB
C	606	87-010-320-080	CHIP CAP 68P	AB
C	604	87-010-405-040	CAP,E 10-50	AB
C	605	87-010-546-040	CAP,E 0.33-50	AB
C	608	87-012-157-080	C-CAP,S 330P-50 CH	AB
C	621	87-010-178-080	CHIP CAP 1000P	AB
CN	602	87-A60-082-010	CONN,05P H 9604S-05F	AB
J	602	87-A61-242-010	JACK,6.3 BLK MONO W/SW V KM	AB
J	601	87-A61-242-010	JACK,6.3 BLK MONO W/SW V KM	AB
L	601	87-003-098-080	COIL,2.2UH	AB
*		8A-NF3-204-010	GUIDE,LED-CASS	AB
C	161	87-010-178-080	CHIP CAP 1000P	AB
C	162	87-012-156-080	C-CAP,S 220P-50 CH	AB
C	401	87-010-196-080	CHIP CAPACITOR,0.1-25	AB
C	407	87-010-322-080	C-CAP,S 100P-50 CH	AB
C	410	87-010-196-080	CHIP CAPACITOR,0.1-25	AB
C	417	87-010-322-080	C-CAP,S 100P-50 CH	AB
C	423	87-010-196-080	CHIP CAPACITOR,0.1-25	AB
C	424	87-010-196-080	CHIP CAPACITOR,0.1-25	AB
C	501	87-010-178-080	CHIP CAP 1000P	AB
C	502	87-012-156-080	C-CAP,S 220P-50 CH	AB
C	532	87-010-196-080	CHIP CAPACITOR,0.1-25	AB
C	531	87-010-196-080	CHIP CAPACITOR,0.1-25	AB
CN	104	87-099-750-010	CONN,15P V 9604SC	AB
CN	302	87-A60-059-010	CONN,08P V 9604S-08C	AB
IC	401	87-070-289-040	IC,BU 2092F	AB
IC	402	87-A21-021-040	C-IC,BU2099FV	AB
LED	101	87-A40-317-080	LED,SLR-342VCT31 RED	AB
LED	421	87-A40-831-010	LED,SELU1E10CXM-LF70 BLUE-DEF	AB
LED	422	87-A40-831-010	LED,SELU1E10CXM-LF70 BLUE-DEF	AB
LED	444	87-A40-380-180	LED,SEL6510C-TP5 GRN	AB
LED	449	87-A40-380-180	LED,SEL6510C-TP5 GRN	AB
LED	441	87-A40-380-180	LED,SEL6510C-TP5 GRN	AB
LED	447	87-A40-380-180	LED,SEL6510C-TP5 GRN	AB
LED	443	87-A40-380-180	LED,SEL6510C-TP5 GRN	AB
LED	448	87-A40-380-180	LED,SEL6510C-TP5 GRN	AB
LED	445	87-A40-380-180	LED,SEL6510C-TP5 GRN	AB
LED	440	87-A40-380-180	LED,SEL6510C-TP5 GRN	AB
LED	446	87-A40-380-180	LED,SEL6510C-TP5 GRN	AB
LED	442	87-A40-380-180	LED,SEL6510C-TP5 GRN	AB
LED	451	87-A40-537-040	LED,SLR-56PT-T31-W	AB
LED	455	87-A40-537-040	LED,SLR-56PT-T31-W	AB
LED	452	87-A40-537-040	LED,SLR-56PT-T31-W	AB
LED	454	87-A40-537-040	LED,SLR-56PT-T31-W	AB
LED	453	87-A40-537-040	LED,SLR-56PT-T31-W	AB
LED	456	87-A40-537-040	LED,SLR-56PT-T31-W	AB
LED	461	87-A40-317-080	LED,SLR-342VCT31 RED	AB
LED	465	87-A40-317-080	LED,SLR-342VCT31 RED	AB
LED	463	87-A40-317-080	LED,SLR-342VCT31 RED	AB
LED	464	87-A40-317-080	LED,SLR-342VCT31 RED	AB
LED	462	87-A40-317-080	LED,SLR-342VCT31 RED	AB
LED	521	87-A40-678-010	LED,SELU1E10CXM BLUE-DEF	AB
LED	522	87-A40-678-010	LED,SELU1E10CXM BLUE-DEF	AB
S	206	87-A90-095-080	SW,TACT EVQ11G04M	AB
S	201	87-A90-095-080	SW,TACT EVQ11G04M	AB
S	202	87-A90-095-080	SW,TACT EVQ11G04M	AB
S	207	87-A90-095-080	SW,TACT EVQ11G04M	AB
S	204	87-A90-095-080	SW,TACT EVQ11G04M	AB
S	203	87-A90-095-080	SW,TACT EVQ11G04M	AB
S	205	87-A90-095-080	SW,TACT EVQ11G04M	AB
S	208	87-A90-095-080	SW,TACT EVQ11G04M	AB
S	211	87-A90-095-080	SW,TACT EVQ11G04M	AB
S	215	87-A90-095-080	SW,TACT EVQ11G04M	AB
S	216	87-A90-095-080	SW,TACT EVQ11G04M	AB
S	213	87-A90-095-080	SW,TACT EVQ11G04M	AB
S	212	87-A90-095-080	SW,TACT EVQ11G04M	AB
S	214	87-A90-095-080	SW,TACT EVQ11G04M	AB
S	217	87-A90-095-080	SW,TACT EVQ11G04M	AB
S	224	87-A90-095-080	SW,TACT EVQ11G04M	AB
S	228	87-A90-095-080	SW,TACT EVQ11G04M	AB
S	229	87-A90-095-080	SW,TACT EVQ11G04M	AB
S	223	87-A90-095-080	SW,TACT EVQ11G04M	AB
S	222	87-A90-095-080	SW,TACT EVQ11G04M	AB
S	225	87-A90-095-080	SW,TACT EVQ11G04M	AB
S	227	87-A90-095-080	SW,TACT EVQ11G04M	AB
S	226	87-A90-095-080	SW,TACT EVQ11G04M	AB
S	221	87-A90-095-080	SW,TACT EVQ11G04M	AB
S	230	87-A90-095-080	SW,TACT EVQ11G04M	AB
S	231	87-A90-095-080	SW,TACT EVQ11G04M	AB
S	232	87-A90-095-080	SW,TACT EVQ11G04M	AB
S	234	87-A90-095-080	SW,TACT EVQ11G04M	AB
S	242	87-A90-095-080	SW,TACT EVQ11G04M	AB
S	248	87-A90-095-080	SW,TACT EVQ11G04M	AB

ELECTRICAL MAIN PARTS LIST - 2/9

S	249	87-A90-095-080	SW,TACT	EVQ11G04M	AB.....
S	243	87-A90-095-080	SW,TACT	EVQ11G04M	AB.....
S	241	87-A90-095-080	SW,TACT	EVQ11G04M	AB.....
S	245	87-A90-095-080	SW,TACT	EVQ11G04M	AB.....
S	247	87-A90-095-080	SW,TACT	EVQ11G04M	AB.....
S	246	87-A90-095-080	SW,TACT	EVQ11G04M	AB.....
S	244	87-A90-095-080	SW,TACT	EVQ11G04M	AB.....
S	250	87-A90-095-080	SW,TACT	EVQ11G04M	AB.....
S	251	87-A90-095-080	SW,TACT	EVQ11G04M	AB.....
S	252	87-A90-095-080	SW,TACT	EVQ11G04M
S	253	87-A90-095-080	SW,TACT	EVQ11G04M
S	512	87-A90-095-080	SW,TACT	EVQ11G04M	AB.....
S	514	87-A90-095-080	SW,TACT	EVQ11G04M	AB.....
S	513	87-A90-095-080	SW,TACT	EVQ11G04M	AB.....
S	511	87-A90-095-080	SW,TACT	EVQ11G04M	AB.....
S	515	87-A90-095-080	SW,TACT	EVQ11G04M	AB.....
SW	101	87-A91-740-010	SW,RTRY	EC12E24308-30MM	AB.....
SW	501	87-A91-739-010	SW,RTRY	EC12E12404-25MM RT	AB.....
		87-067-703-010	TAPPING	SCREW, BVT2+3-10	AB.....
C	1	87-010-387-080	CAP,E	470-25 SME	AB.....
C	7	87-010-917-000	CAP,E	3300-50 M SMG	AB.....
C	6	87-010-917-000	CAP,E	3300-50 M SMG	AB.....
C	9	87-A11-148-080	CAP,TC	U 0.1-50 Z F	AB.....
C	4	87-A11-148-080	CAP,TC	U 0.1-50 Z F	AB.....
C	8	87-A11-148-080	CAP,TC	U 0.1-50 Z F	AB.....
C	5	87-A11-148-080	CAP,TC	U 0.1-50 Z F	AB.....
C	16	87-010-403-040	CAP,E	3.3-50 SME	AB.....
C	13	87-010-917-000	CAP,E	3300-50 M SMG	AB.....
C	12	87-010-917-000	CAP,E	3300-50 M SMG	AB.....
C	11	87-A11-148-080	CAP,TC	U 0.1-50 Z F	AB.....
C	10	87-A11-148-080	CAP,TC	U 0.1-50 Z F	AB.....
C	18	87-A11-148-080	CAP,TC	U 0.1-50 Z F	AB.....
C	19	87-A11-148-080	CAP,TC	U 0.1-50 Z F	AB.....
C	22	87-A10-231-090	CAP,E	3300-80	AB.....
C	23	87-A10-231-090	CAP,E	3300-80	AB.....
C	25	87-A11-148-080	CAP,TC	U 0.1-50 Z F	AB.....
C	27	87-A11-148-080	CAP,TC	U 0.1-50 Z F	AB.....
C	28	87-A11-148-080	CAP,TC	U 0.1-50 Z F	AB.....
C	24	87-A11-148-080	CAP,TC	U 0.1-50 Z F	AB.....
C	20	87-A11-148-080	CAP,TC	U 0.1-50 Z F	AB.....
C	21	87-A11-148-080	CAP,TC	U 0.1-50 Z F	AB.....
C	29	87-A11-148-080	CAP,TC	U 0.1-50 Z F	AB.....
C	34	87-A11-148-080	CAP,TC	U 0.1-50 Z F	AB.....
C	36	87-A11-148-080	CAP,TC	U 0.1-50 Z F	AB.....
C	37	87-A11-148-080	CAP,TC	U 0.1-50 Z F	AB.....
C	32	87-A11-148-080	CAP,TC	U 0.1-50 Z F	AB.....
C	38	87-A11-148-080	CAP,TC	U 0.1-50 Z F	AB.....
C	30	87-A11-148-080	CAP,TC	U 0.1-50 Z F	AB.....
C	31	87-A11-148-080	CAP,TC	U 0.1-50 Z F	AB.....
C	33	87-A11-148-080	CAP,TC	U 0.1-50 Z F	AB.....
C	35	87-A11-148-080	CAP,TC	U 0.1-50 Z F	AB.....
CN	2	87-A61-108-010	CONN,5P	V TID-A
CN	2	87-A61-109-010	CONN,7P	V TID-A	AB.....
CN	1	87-A61-110-010	CONN,9P	V TID-A	AB.....
D	2	87-017-447-010	DIODE,GBU4DL	
D	3	87-017-654-060	DIODE,GBU6J		AB.....
D	9	87-020-465-080	DIODE,1SS133	(110MA)	AB.....
D	2	87-A40-224-010	DIODE,GBU8D		AB.....
FC	4	87-033-213-080	CLAMP, FUSE		AB.....
FC	2	87-033-213-080	CLAMP, FUSE		AB.....
FC	3	87-033-213-080	CLAMP, FUSE		AB.....
FC	1	87-033-213-080	CLAMP, FUSE		AB.....
PR	1	87-026-682-080	PROTECTOR,10A	60V491	AB.....
PR	6	87-A90-195-080	PROTECTOR	7A 125V 49	AB.....
PT	2	8A-NF8-662-010	PT,SUB ANF-8	(E)
PT	2	8A-NF8-673-010	PT,SUB ANF-8	(H)KAMI	AB.....
Q	1	87-026-245-080	TR,DTC114ES		AB.....
Q	2	87-A30-198-080	TR,KTC3199GR		AB.....
RY	1	87-A90-976-010	RELAY,AC12V	SDT-S-112LMR
RY	2	87-A91-300-010	RELAY,AC 12V	-ALA2PF12	AB.....
S	1	87-A90-165-010	SW,SL 1-2-3	SWS2301	AB.....
T	2	87-A60-317-010	TERMINAL, 1P	MSC	AB.....
T	1	87-A60-317-010	TERMINAL, 1P	MSC	AB.....
		87-067-703-010	TAPPING	SCREW, BVT2+3-10	AB.....
*		8A-NF3-215-010	HLDR,TR		AB.....
*		8A-NF3-217-010	HLDR,TR-SW		AB.....
C	101	87-010-188-080	CAP,CHIP	6800P	AB.....
C	102	87-010-188-080	CAP,CHIP	6800P	AB.....
C	107	87-010-404-080	CAP, ELECT	4.7-50V	AB.....
C	108	87-010-404-080	CAP, ELECT	4.7-50V	AB.....
C	104	87-010-405-080	CAP, ELECT	10-50V	AB.....
C	103	87-010-405-080	CAP, ELECT	10-50V	AB.....
C	119	87-010-197-080	CAP, CHIP	0.01 DM	AB.....
C	112	87-010-322-080	C-CAP,S	100P-50 CH	AB.....
C	111	87-010-322-080	C-CAP,S	100P-50 CH	AB.....
C	113	87-A10-812-080	C-CAP,S	220P-200 J CH	AB.....
C	114	87-A10-812-080	C-CAP,S	220P-200 J CH	AB.....
C	120	87-010-197-080	CAP, CHIP	0.01 DM	AB.....
C	122	87-010-260-080	CAP, ELECT	47-25V	AB.....
C	121	87-010-260-080	CAP, ELECT	47-25V	AB.....
C	123	87-012-368-080	C-CAP,S	0.1-50 F
C	174	87-010-186-080	CAP,CHIP	4700P	AB.....

ELECTRICAL MAIN PARTS LIST - 3/9

C	173	87-010-186-080	CAP,CHIP 4700P	AB
C	209	87-010-184-080	CHIP CAPACITOR 3300P(K)	AB
C	206	87-010-187-080	CAP CHIP S5600P	AB
C	205	87-010-187-080	CAP CHIP S5600P	AB
C	207	87-010-403-080	CAP, ELECT 3.3-50V	AB
C	208	87-010-403-080	CAP, ELECT 3.3-50V	AB
C	210	87-010-184-080	CHIP CAPACITOR 3300P(K)	AB
C	218	87-010-260-080	CAP, ELECT 47-25V	AB
C	217	87-010-260-080	CAP, ELECT 47-25V	AB
C	211	87-010-401-080	CAP, ELECT 1-50V	AB
C	212	87-010-401-080	CAP, ELECT 1-50V	AB
C	216	87-012-156-080	C-CAP,S 220P-50 CH	AB
C	215	87-012-156-080	C-CAP,S 220P-50 CH	AB
C	223	87-010-197-080	CAP, CHIP 0.01 DM	AB
C	224	87-010-197-080	CAP, CHIP 0.01 DM	AB
C	221	87-010-405-080	CAP, ELECT 10-50V	AB
C	222	87-010-405-080	CAP, ELECT 10-50V	AB
C	249	87-012-368-080	C-CAP,S 0.1-50 F	AB
C	255	87-010-190-080	S CHIP F 0.01	AB
C	256	87-010-190-080	S CHIP F 0.01	AB
C	253	87-010-196-080	CHIP CAPACITOR,0.1-25	AB
C	252	87-010-196-080	CHIP CAPACITOR,0.1-25	AB
C	254	87-010-993-080	C-CAP,S 0.056-25 B	AB
C	251	87-010-993-080	C-CAP,S 0.056-25 B	AB
C	402	87-010-196-080	CHIP CAPACITOR,0.1-25	AB
C	413	87-A10-119-080	CAP,E 10-100 REA	AB
C	414	87-A10-119-080	CAP,E 10-100 REA	AB
CNA	101	8A-NF8-652-010	CONN ASSY,7P TID-A(480)	AB
CNA	103	8A-NF8-656-010	CONN ASSY,5P TID-A 400	AB
CON	102	87-A61-011-010	CONN,13P H BLK TAC-L13P-A3	AB
CON	101	87-A61-011-010	CONN,13P H BLK TAC-L13P-A3	AB
D	118	87-A40-488-080	DIODE,1SS244	AB
D	202	87-020-331-080	CHIP-DIODE,DAN202K	AB
D	205	87-A40-270-080	C-DIODE,MC2838	AB
D	203	87-A40-313-080	C-DIODE,MC 2840	AB
D	419	87-A40-747-080	ZENER,UZ5.1BSB	AB
D	418	87-A40-751-080	ZENER,UZ6.2BSB	AB
D	422	87-A40-646-010	DIODE,FMB-G16L	AB
D	428	87-A40-764-080	ZENER,UZ10BSC	AB
FB	101	87-A90-896-080	F-BEAD, 035600STY7	AB
FB	102	87-A90-896-080	F-BEAD, 035600STY7	AB
IC	201	87-A21-398-010	IC,STK490-110	AB
J	201	87-A61-148-010	JACK,PIN 4P R/W BLUE	AB
JW	124	87-A90-896-080	F-BEAD, 035600STY7	AB
JW	138	87-A90-896-080	F-BEAD, 035600STY7	AB
JW	944	87-A90-896-080	F-BEAD, 035600STY7	AB
L	251	87-A50-610-010	COIL,1UH K(MDEC)	AB
L	252	87-A50-610-010	COIL,1UH K(MDEC)	AB
Q	111	87-A30-107-070	C-TR,CMBT5401	AB
Q	120	87-A30-190-080	TR,CC5551	AB
Q	131	87-A30-097-010	TR,FN 1016	AB
Q	132	87-A30-204-010	TR,2SD2439	AB
Q	134	87-A30-205-010	TR,2SB1588	AB
Q	172	87-A30-106-040	C-TR,CMBT5551	AB
Q	406	87-A30-186-010	FET,2SK3053	AB
Q	410	87-A30-075-080	C-TR,2SA1235F	AB
Q	606	87-A30-186-010	FET,2SK3053	AB
R	166	87-A00-418-010	RES,M/F 0.15-3W J	AB
R	162	87-A00-418-010	RES,M/F 0.15-3W J	AB
R	165	87-A00-418-010	RES,M/F 0.15-3W J	AB
R	161	87-A00-418-010	RES,M/F 0.15-3W J	AB
R	231	87-A00-258-080	RES,M/F 0.22-1W J	AB
R	232	87-A00-258-080	RES,M/F 0.22-1W J	AB
R	231	87-A00-669-080	RES,M/F 0.22-2W J RA	AB
R	232	87-A00-669-080	RES,M/F 0.22-2W J RA	AB
R	243	87-A00-258-080	RES,M/F 0.22-1W J	AB
R	244	87-A00-258-080	RES,M/F 0.22-1W J	AB
R	243	87-A00-669-080	RES,M/F 0.22-2W J RA	AB
R	244	87-A00-669-080	RES,M/F 0.22-2W J RA	AB
TH	102	87-A91-042-080	C-THMS,100K 55001	AB
TH	101	87-A91-042-080	C-THMS,100K 55001	AB
WH	103	87-A90-459-010	HLDR,WIRE 2.5-5P	AB
WH	101	87-A90-460-010	HLDR,WIRE 2.5-7P	AB
*		8Z-NF3-210-010	GUIDE,FL	AB
C	103	87-010-196-080	CHIP CAPACITOR,0.1-25	AB
C	104	87-010-313-080	CAP, CHIP 18P	AB
C	105	87-010-322-080	C-CAP,S 100P-50 CH	AB
C	109	87-010-401-040	CAP,E 1-50 SME	AB
C	106	87-012-145-080	CAP, CHIP S 270P CH	AB
C	107	87-012-157-080	C-CAP,S 330P-50 CH	AB
C	108	87-015-681-040	E/CAP 10-16	AB
C	118	87-010-194-080	CAP, CHIP 0.047	AB
C	114	87-010-196-080	CHIP CAPACITOR,0.1-25	AB
C	110	87-010-196-080	CHIP CAPACITOR,0.1-25	AB
C	115	87-010-198-080	CAP, CHIP 0.022	AB
C	116	87-010-493-040	CAP,E 0.47-50 GAS	AB
C	117	87-010-498-040	CAP,E 10-16 GAS	AB
C	112	87-016-460-080	C-CAP,S 0.22-16 B	AB
C	113	87-A10-189-040	CAP,E 220-10	AB
C	119	87-A10-797-040	CAP,E 47-35 M 5L SRM	AB
C	128	87-010-178-080	CHIP CAP 1000P	AB
C	129	87-010-194-080	CAP, CHIP 0.047	AB

ELECTRICAL MAIN PARTS LIST - 4/9

C	125	87-010-196-080	CHIP CAPACITOR,0.1-25	AB.....
C	123	87-010-196-080	CHIP CAPACITOR,0.1-25	AB.....
C	122	87-010-197-080	CAP, CHIP 0.01 DM	AB.....
C	121	87-015-699-040	CAP,E 10-50 7L	AB.....
C	120	87-015-699-040	CAP,E 10-50 7L	AB.....
C	132	87-A10-189-040	CAP,E 220-10	AB.....
C	131	87-A10-189-040	CAP,E 220-10	AB.....
C	151	87-010-194-080	CAP, CHIP 0.047	AB.....
C	196	87-010-194-080	CAP, CHIP 0.047	AB.....
C	197	87-010-194-080	CAP, CHIP 0.047	AB.....
C	192	87-015-785-080	CHIP CAPACITOR, 0.1FZ-25Z	AB.....
C	213	87-A10-189-040	CAP,E 220-10	AB.....
C	305	87-010-196-080	CHIP CAPACITOR,0.1-25	AB.....
C	306	87-010-196-080	CHIP CAPACITOR,0.1-25	AB.....
C	301	87-010-318-080	C-CAP,S 47P-50 CH	AB.....
C	304	87-016-460-080	C-CAP,S 0.22-16 B	AB.....
C	303	87-016-460-080	C-CAP,S 0.22-16 B	AB.....
C	310	87-010-067-040	CAP,E 0.1-50 5L	AB.....
C	701	87-010-981-040	CAP,E 22-35 5L SRE	AB.....
C	904	87-010-176-080	C-CAP,S 680P-50 SL	AB.....
C	908	87-010-176-080	C-CAP,S 680P-50 SL	AB.....
C	909	87-010-176-080	C-CAP,S 680P-50 SL	AB.....
C	903	87-010-176-080	C-CAP,S 680P-50 SL	AB.....
C	902	87-010-176-080	C-CAP,S 680P-50 SL	AB.....
C	905	87-010-176-080	C-CAP,S 680P-50 SL	AB.....
C	907	87-010-176-080	C-CAP,S 680P-50 SL	AB.....
C	906	87-010-176-080	C-CAP,S 680P-50 SL	AB.....
C	901	87-012-157-080	C-CAP,S 330P-50 CH	AB.....
C	910	87-010-176-080	C-CAP,S 680P-50 SL	AB.....
C	911	87-010-176-080	C-CAP,S 680P-50 SL	AB.....
C	912	87-010-176-080	C-CAP,S 680P-50 SL	AB.....
C	913	87-010-176-080	C-CAP,S 680P-50 SL	AB.....
C	914	87-012-145-080	CAP, CHIP S 270P CH	AB.....
CN	101	87-099-720-010	CONN,30P TYK-B(P)	AB.....
CN	103	87-099-750-010	CONN,15P V 9604SC	AB.....
CN	102	87-A60-054-010	CONN,14P V 9604S-14C	AB.....
CN	301	87-A60-079-010	CONN,08P H 9604S-08F	AB.....
CN	601	87-A60-062-010	CONN,05P V 9604S-05C	AB.....
CN	701	87-099-750-010	CONN,15P V 9604SC	AB.....
D	109	87-017-154-080	ZENER,HZS6C3L	AB.....
FL	101	8A-NF3-613-010	FL,BJ752GK-ANF3	AB.....
IC	102	87-A21-482-010	IC,RPM6938-H4	AB.....
IC	101	8A-NF3-635-010	C-IC,LC876580W-****	AB.....
IC	380	87-A21-577-040	C-IC,M61506FP	AB.....
JW	315	87-A90-896-080	F-BEAD, 035600STY7	AB.....
JW	316	87-A90-896-080	F-BEAD, 035600STY7	AB.....
L	101	87-A50-333-010	COIL,OSC 9.43MHZ	AB.....
LED	315	87-A40-380-180	LED,SEL6510C-TP5 GRN	AB.....
LED	311	87-A40-380-180	LED,SEL6510C-TP5 GRN	AB.....
LED	312	87-A40-380-180	LED,SEL6510C-TP5 GRN	AB.....
LED	314	87-A40-380-180	LED,SEL6510C-TP5 GRN	AB.....
LED	313	87-A40-380-180	LED,SEL6510C-TP5 GRN	AB.....
Q	102	87-A30-076-080	C-TR,2SC3052F	AB.....
Q	101	87-A30-087-080	C-FET,2SK2158	AB.....
QQ	112	87-A30-074-080	C-TR,RT1P 141C	AB.....
Q	301	87-A30-276-040	C-TR,DTA143EKA	AB.....
Q	702	87-A30-318-080	TR,CSA952K	AB.....
Q	701	87-A30-329-080	TR,CD1585BC	AB.....
S	316	87-A90-095-080	SW,TACT EVQ11G04M	AB.....
S	317	87-A90-095-080	SW,TACT EVQ11G04M	AB.....
S	312	87-A90-095-080	SW,TACT EVQ11G04M	AB.....
S	311	87-A90-095-080	SW,TACT EVQ11G04M	AB.....
S	315	87-A90-095-080	SW,TACT EVQ11G04M	AB.....
S	314	87-A90-095-080	SW,TACT EVQ11G04M	AB.....
S	313	87-A90-095-080	SW,TACT EVQ11G04M	AB.....
C	806	87-010-071-040	CAP,E 1-50 M 5L SRE	AB.....
C	802	87-010-176-080	C-CAP,S 680P-50 SL	AB.....
C	803	87-010-187-080	CAP CHIP S5600P	AB.....
C	805	87-010-197-080	CAP, CHIP 0.01 DM	AB.....
C	807	87-010-197-080	CAP, CHIP 0.01 DM	AB.....
C	804	87-010-213-080	C-CAP,S 0.015-50 B	AB.....
C	809	87-012-155-080	C-CAP 180P-50CH	AB.....
C	801	87-012-156-080	C-CAP,S 220P-50 CH	AB.....
C	811	87-010-244-040	CAP,E 22-16 5L	AB.....
C	810	87-010-264-040	CAP,E 100-10 5L	AB.....
C	812	87-016-044-040	CAP,E 100-16 GAS	AB.....
C	821	87-010-196-080	CHIP CAPACITOR,0.1-25	AB.....
C	833	87-010-322-080	C-CAP,S 100P-50 CH	AB.....
D	801	87-A40-749-080	ZENER,UZ5.6BSB	AB.....
IC	801	87-A21-051-040	C-IC,BU9990-03FS	AB.....
L	802	87-003-098-080	COIL,2.2UH	AB.....
L	801	87-A50-093-010	COIL,CLOCK 5.76MHZ	AB.....
C	307	87-010-196-080	CHIP CAPACITOR,0.1-25	AB.....
C	302	87-010-318-080	C-CAP,S 47P-50 CH	AB.....
C	301	87-010-318-080	C-CAP,S 47P-50 CH	AB.....
C	304	87-012-157-080	C-CAP,S 330P-50 CH	AB.....
C	305	87-012-157-080	C-CAP,S 330P-50 CH	AB.....
C	306	87-012-157-080	C-CAP,S 330P-50 CH	AB.....
C	303	87-012-157-080	C-CAP,S 330P-50 CH	AB.....
C	316	87-010-178-080	CHIP CAP 1000P	AB.....
C	315	87-010-178-080	CHIP CAP 1000P	AB.....
C	313	87-010-180-080	C-CER 1500P	AB.....

ELECTRICAL MAIN PARTS LIST - 5/9

C	314	87-010-180-080	C-CER 1500P	AB
C	311	87-010-198-080	CAP, CHIP 0.022	AB
C	312	87-010-198-080	CAP, CHIP 0.022	AB
C	319	87-012-141-080	CHIP-CAPACITOR,0.22-16F	AB
C	317	87-A10-201-080	C-CAP,S0.33-16 KB	AB
C	318	87-A10-201-080	C-CAP,S0.33-16 KB	AB
C	324	87-010-260-080	CAP, ELECT 47-25V	AB
C	325	87-010-370-080	CAP,E 330-6.3 SME	AB
C	328	87-010-404-080	CAP, ELECT 4.7-50V	AB
C	327	87-010-404-080	CAP, ELECT 4.7-50V	AB
C	321	87-012-141-080	CHIP-CAPACITOR,0.22-16F	AB
C	322	87-012-141-080	CHIP-CAPACITOR,0.22-16F	AB
C	320	87-012-141-080	CHIP-CAPACITOR,0.22-16F	AB
C	332	87-010-196-080	CHIP CAPACITOR,0.1-25	AB
C	337	87-010-196-080	CHIP CAPACITOR,0.1-25	AB
C	339	87-010-196-080	CHIP CAPACITOR,0.1-25	AB
C	335	87-010-401-080	CAP, ELECT 1-50V	AB
C	336	87-010-401-080	CAP, ELECT 1-50V	AB
C	340	87-010-196-080	CHIP CAPACITOR,0.1-25	AB
C	354	87-010-175-080	CAP 560P	AB
C	358	87-010-183-080	C-CAP,S 2700P-50 B	AB
C	359	87-010-183-080	C-CAP,S 2700P-50 B	AB
C	357	87-010-197-080	CAP, CHIP 0.01 DM	AB
C	356	87-010-260-080	CAP, ELECT 47-25V	AB
C	351	87-012-140-080	CAP 470P	AB
C	352	87-012-140-080	CAP 470P	AB
C	355	87-012-349-080	C-CAP,S 1000P-50 CH	AB
C	360	87-010-183-080	C-CAP,S 2700P-50 B	AB
C	372	87-010-175-080	CAP 560P	AB
C	371	87-010-175-080	CAP 560P	AB
C	374	87-010-179-080	CAP,CHIP S B1200P	AB
C	373	87-010-179-080	CAP,CHIP S B1200P	AB
C	370	87-010-196-080	CHIP CAPACITOR,0.1-25	AB
C	378	87-010-196-080	CHIP CAPACITOR,0.1-25	AB
C	376	87-010-545-080	CAP, ELECT 0.22-50V	AB
C	375	87-010-545-080	CAP, ELECT 0.22-50V	AB
C	385	87-010-184-080	CHIP CAPACITOR 3300P(K)	AB
C	386	87-010-196-080	CHIP CAPACITOR,0.1-25	AB
C	381	87-010-197-080	CAP, CHIP 0.01 DM	AB
C	383	87-010-197-080	CAP, CHIP 0.01 DM	AB
C	382	87-010-318-080	C-CAP,S 47P-50 CH	AB
C	384	87-010-402-080	CAP, ELECT 2.2-50V	AB
C	388	87-012-156-080	C-CAP,S 220P-50 CH	AB
CN	301	87-A60-620-010	CONN,3P V 2MM JMT	AB
CN	351	87-A60-625-010	CONN,8P V 2MM JMT	AB
FB	301	87-008-372-080	FILTER, EMI BL OIRNI	AB
IC	302	87-A20-355-010	IC,CXA1553P	AB
IC	303	87-A20-783-040	C-IC,BA7762AFS	AB
L	302	87-A50-049-010	COIL,TRAP 85K(COI)	AB
L	301	87-A50-049-010	COIL,TRAP 85K(COI)	AB
L	351	87-007-342-010	COIL,OSC 85K BIAS	AB
Q	357	87-026-609-080	TR,KTA1266GR	AB
Q	355	87-A30-063-080	C-TR,KRA104S	AB
SFR	304	87-024-355-080	SFR,33K DIA6 H	AB
SFR	302	87-024-355-080	SFR,33K DIA6 H	AB
SFR	303	87-024-355-080	SFR,33K DIA6 H	AB
SFR	301	87-024-355-080	SFR,33K DIA6 H	AB
SFR	305	87-024-356-080	SFR,47K DIA6 H	AB
SFR	306	87-024-356-080	SFR,47K DIA6 H	AB
SFR	351	87-024-356-080	SFR,47K DIA6 H	AB
SFR	352	87-024-356-080	SFR,47K DIA6 H	AB
C	557	87-010-183-080	C-CAP,S 2700P-50 B	AB
C	559	87-010-196-080	CHIP CAPACITOR,0.1-25	AB
C	556	87-012-145-080	CAP, CHIP S 270P CH	AB
C	555	87-012-145-080	CAP, CHIP S 270P CH	AB
C	554	87-012-154-080	C-CAP,S 150P-50 CH	AB
C	553	87-012-154-080	C-CAP,S 150P-50 CH	AB
C	552	87-A10-060-080	C-CAP,S 0.18-16 K B	AB
C	551	87-A10-060-080	C-CAP,S 0.18-16 K B	AB
C	560	87-010-177-080	C-CAP,S 820P-50 SL	AB
C	561	87-010-177-080	C-CAP,S 820P-50 SL	AB
C	567	87-010-183-080	C-CAP,S 2700P-50 B	AB
C	562	87-010-196-080	CHIP CAPACITOR,0.1-25	AB
C	564	87-010-196-080	CHIP CAPACITOR,0.1-25	AB
C	565	87-010-263-080	CAP, ELECT 100-10V	AB
C	563	87-010-374-080	CAP, ELECT 47-10V	AB
C	577	87-010-196-080	CHIP CAPACITOR,0.1-25	AB
C	573	87-016-460-080	C-CAP,S 0.22-16 B	AB
C	571	87-016-460-080	C-CAP,S 0.22-16 B	AB
C	572	87-016-460-080	C-CAP,S 0.22-16 B	AB
CN	551	87-A60-689-010	CONN,7P H GRY TUC-P07X-C1	AB
IC	551	87-A20-561-040	C-IC,M65847AFP	AB
C	104	87-010-196-080	CHIP CAPACITOR,0.1-25	AB
C	105	87-010-196-080	CHIP CAPACITOR,0.1-25	AB
C	116	87-010-401-080	CAP, ELECT 1-50V	AB
C	111	87-010-401-080	CAP, ELECT 1-50V	AB
C	115	87-010-401-080	CAP, ELECT 1-50V	AB
C	112	87-010-401-080	CAP, ELECT 1-50V	AB
C	121	87-010-406-080	CAP, ELECT 22-50	AB
C	122	87-010-406-080	CAP, ELECT 22-50	AB
C	151	87-010-405-080	CAP, ELECT 10-50V	AB
C	163	87-010-196-080	CHIP CAPACITOR,0.1-25	AB

ELECTRICAL MAIN PARTS LIST - 6/9

C	177	87-010-197-080	CAP, CHIP 0.01 DM	AB.....
C	178	87-010-197-080	CAP, CHIP 0.01 DM	AB.....
C	171	87-012-368-080	C-CAP,S 0.1-50 F	AB.....
C	174	87-012-368-080	C-CAP,S 0.1-50 F	AB.....
C	173	87-012-368-080	C-CAP,S 0.1-50 F	AB.....
C	172	87-012-368-080	C-CAP,S 0.1-50 F	AB.....
C	175	87-A11-572-080	C-CAP,S 0.015-50 K B	AB.....
C	176	87-A11-572-080	C-CAP,S 0.015-50 K B	AB.....
CN	101	87-A60-996-010	CONN,13P V BLK TAC-L13X-A3	AB.....
J	102	87-A60-238-010	TERMINAL,SP 4P (MSC)	AB.....
J	103	87-A60-483-010	JACK,DIA6.3 BLK ST W/S KM	AB.....
L	101	87-A50-610-010	COIL,1UH K(MDEC)	AB.....
L	102	87-A50-610-010	COIL,1UH K(MDEC)	AB.....
Q	101	87-A30-086-040	C-TR,CSD1306E	AB.....
R	163	87-A00-441-050	RES,270-1/2W J RP	AB.....
R	162	87-A00-441-050	RES,270-1/2W J RP	AB.....
R	161	87-A00-441-050	RES,270-1/2W J RP	AB.....
R	164	87-A00-441-050	RES,270-1/2W J RP	AB.....
C	973	87-010-197-080	CAP, CHIP 0.01 DM	AB.....
C	974	87-010-197-080	CAP, CHIP 0.01 DM	AB.....
C	979	87-010-322-080	C-CAP,S 100P-50 CH	AB.....
C	971	87-010-381-080	CAP, ELECT 330-16V	AB.....
C	972	87-010-404-080	CAP, ELECT 4.7-50V	AB.....
C	982	87-010-196-080	CHIP CAPACITOR,0.1-25	AB.....
C	989	87-010-197-080	CAP, CHIP 0.01 DM	AB.....
C	987	87-010-197-080	CAP, CHIP 0.01 DM	AB.....
C	984	87-010-197-080	CAP, CHIP 0.01 DM	AB.....
C	983	87-010-197-080	CAP, CHIP 0.01 DM	AB.....
C	981	87-010-260-080	CAP, ELECT 47-25V	AB.....
C	985	87-010-322-080	C-CAP,S 100P-50 CH	AB.....
C	993	87-010-178-080	CHIP CAP 1000P	AB.....
C	995	87-010-178-080	CHIP CAP 1000P	AB.....
C	997	87-010-196-080	CHIP CAPACITOR,0.1-25	AB.....
C	998	87-010-260-080	CAP, ELECT 47-25V	AB.....
C	992	87-010-312-080	C-CAP,S 15P-50 CH	AB.....
C	991	87-010-312-080	C-CAP,S 15P-50 CH	AB.....
C	999	87-A11-155-080	CAP,TC U 0.01-16 Z F	AB.....
D	991	87-017-149-080	ZENER,HZS6A2L	AB.....
IC	991	87-070-127-110	IC,LC72131 D	AB.....
Q	981	87-A30-234-080	TR,CSC4115BC	AB.....
R	993	87-010-322-080	C-CAP,S 100P-50 CH	AB.....
R	991	87-010-322-080	C-CAP,S 100P-50 CH	AB.....
R	995	87-010-322-080	C-CAP,S 100P-50 CH	AB.....
X	991	87-A70-061-010	VIB,XTAL 4.500MHZ CSA-309	AB.....
C	774	87-010-184-080	CHIP CAPACITOR 3300P(K)	AB.....
C	773	87-010-184-080	CHIP CAPACITOR 3300P(K)	AB.....
C	772	87-010-197-080	CAP, CHIP 0.01 DM	AB.....
C	771	87-010-263-080	CAP, ELECT 100-10V	AB.....
C	788	87-010-149-080	C-CAP,S 5P-50 CH	AB.....
C	785	87-010-197-080	CAP, CHIP 0.01 DM	AB.....
C	783	87-010-197-080	CAP, CHIP 0.01 DM	AB.....
C	784	87-010-197-080	CAP, CHIP 0.01 DM	AB.....
C	786	87-010-197-080	CAP, CHIP 0.01 DM	AB.....
C	782	87-010-197-080	CAP, CHIP 0.01 DM	AB.....
C	789	87-012-365-080	C-CAP,S 0.027-25VBK	AB.....
C	789	87-A10-592-080	C-CAP,S 0.015-50 J B	AB.....
C	791	87-010-196-080	CHIP CAPACITOR,0.1-25	AB.....
C	798	87-010-197-080	CAP, CHIP 0.01 DM	AB.....
C	795	87-010-197-080	CAP, CHIP 0.01 DM	AB.....
C	792	87-010-197-080	CAP, CHIP 0.01 DM	AB.....
C	796	87-010-197-080	CAP, CHIP 0.01 DM	AB.....
C	793	87-010-404-080	CAP, ELECT 4.7-50V	AB.....
C	797	87-010-405-080	CAP, ELECT 10-50V	AB.....
C	799	87-010-407-080	CAP, ELECT 33-50V	AB.....
C	790	87-012-365-080	C-CAP,S 0.027-25VBK	AB.....
C	790	87-A10-592-080	C-CAP,S 0.015-50 J B	AB.....
C	803	87-010-198-080	CAP, CHIP 0.022	AB.....
C	804	87-010-263-080	CAP, ELECT 100-10V	AB.....
C	807	87-010-400-080	CAP, ELECT 0.47-50V	AB.....
C	808	87-010-401-080	CAP, ELECT 1-50V	AB.....
C	809	87-010-401-080	CAP, ELECT 1-50V	AB.....
C	801	87-010-403-080	CAP, ELECT 3.3-50V	AB.....
C	800	87-012-369-080	C-CAP,S 0.047-50F	AB.....
C	802	87-012-369-080	C-CAP,S 0.047-50F	AB.....
C	819	87-010-179-080	CAP,CHIP S B1200P	AB.....
C	818	87-010-180-080	C-CER 1500P	AB.....
C	810	87-010-196-080	CHIP CAPACITOR,0.1-25	AB.....
C	814	87-010-197-080	CAP, CHIP 0.01 DM	AB.....
C	815	87-010-400-080	CAP, ELECT 0.47-50V	AB.....
C	816	87-010-400-080	CAP, ELECT 0.47-50V	AB.....
C	812	87-010-403-080	CAP, ELECT 3.3-50V	AB.....
C	811	87-010-403-080	CAP, ELECT 3.3-50V	AB.....
C	823	87-010-177-080	C-CAP,S 820P-50 SL	AB.....
C	820	87-010-179-080	CAP,CHIP S B1200P	AB.....
C	824	87-010-405-080	CAP, ELECT 10-50V	AB.....
C	821	87-010-405-080	CAP, ELECT 10-50V	AB.....
C	825	87-010-596-080	CAP, S 0.047-16	AB.....
C	823	87-012-349-080	C-CAP,S 1000P-50 CH	AB.....
IC	801	87-A21-560-010	IC,LA1844L-A	AB.....
L	801	87-A50-608-010	COIL,FM DET-N(TOK)	AB.....
L	802	87-A91-551-010	FLTR,PCFJZH-450 L(TOK)	AB.....
L	802	87-A91-552-010	FLTR,CFMT-450AL (TOK)	AB.....

ELECTRICAL MAIN PARTS LIST - 7/9

L	811	87-005-847-080	COIL,2.2UH(CECS)	AB.....
L	822	87-A50-027-010	COIL,1 POLE MPX(TOK)
L	821	87-A50-027-010	COIL,1 POLE MPX(TOK)
L	822	87-A50-209-010	COIL,1POLE MPX(MIT)	AB.....
L	821	87-A50-209-010	COIL,1POLE MPX(MIT)	AB.....
R	790	87-010-197-080	CAP, CHIP 0.01 DM	AB.....
C	869	87-010-197-080	CAP, CHIP 0.01 DM
C	875	87-010-196-080	CHIP CAPACITOR,0.1-25
C	877	87-010-197-080	CAP, CHIP 0.01 DM
C	879	87-010-314-080	C-CAP,S 22P-50V
C	878	87-010-316-080	C-CAP,S 33P-50 CH
C	874	87-010-405-080	CAP, ELECT 10-50V
C	876	87-010-405-080	CAP, ELECT 10-50V
C	873	87-012-140-080	CAP 470P
C	872	87-012-156-080	C-CAP,S 220P-50 CH
C	871	87-012-156-080	C-CAP,S 220P-50 CH
IC	861	87-A20-440-040	C-IC,BU1920FS
L	861	87-005-847-080	COIL,2.2UH(CECS)
Q	862	87-A30-073-080	C-TR,RT1N 141C
X	861	87-A70-091-010	VIB,XTAL 4.332MHZ CSA-309
C	831	87-010-406-080	CAP, ELECT 22-50
C	844	87-010-197-080	CAP, CHIP 0.01 DM	AB.....
C	842	87-010-197-080	CAP, CHIP 0.01 DM	AB.....
C	859	87-010-196-080	CHIP CAPACITOR,0.1-25	AB.....
C	858	87-010-196-080	CHIP CAPACITOR,0.1-25	AB.....
C	852	87-010-197-080	CAP, CHIP 0.01 DM	AB.....
C	853	87-010-197-080	CAP, CHIP 0.01 DM	AB.....
C	851	87-010-197-080	CAP, CHIP 0.01 DM	AB.....
C	850	87-010-260-080	CAP, ELECT 47-25V	AB.....
C	860	87-010-197-080	CAP, CHIP 0.01 DM	AB.....
C	948	87-010-148-080	CAP, CHIP S 75P SL
C	942	87-010-149-080	C-CAP,S 5P-50 CH
C	947	87-010-197-080	CAP, CHIP 0.01 DM
C	940	87-010-197-080	CAP, CHIP 0.01 DM
C	945	87-010-197-080	CAP, CHIP 0.01 DM
C	943	87-010-197-080	CAP, CHIP 0.01 DM
C	941	87-010-314-080	C-CAP,S 22P-50V
C	946	87-010-971-080	C-CAP,S 4700P-50 B J
C	948	87-012-140-080	CAP 470P
C	959	87-010-196-080	CHIP CAPACITOR,0.1-25	AB.....
C	958	87-010-197-080	CAP, CHIP 0.01 DM
C	952	87-010-197-080	CAP, CHIP 0.01 DM
C	953	87-010-197-080	CAP, CHIP 0.01 DM
C	956	87-010-263-080	CAP, ELECT 100-10V
C	957	87-010-311-080	CAP 12P
C	954	87-010-400-080	CAP, ELECT 0.47-50V
C	961	87-010-152-080	C-CAP,S 8P-50 CH	AB.....
C	960	87-010-196-080	CHIP CAPACITOR,0.1-25	AB.....
C	962	87-010-401-080	CAP, ELECT 1-50V
C	964	87-010-854-080	C-CAP,S 560PCH
C	963	87-015-785-080	CHIP CAPACITOR, 0.1FZ-25Z	AB.....
CF	832	82-785-747-010	CF MS2 GHY R
CF	831	87-008-261-010	FILTER, SFE10.7MA5-A	AB.....
CF	832	87-008-261-010	FILTER, SFE10.7MA5-A	AB.....
CF	831	87-008-423-010	CERAMIC FILTER, SFE10.7
D	951	87-A40-618-080	VARI-CAP,SVC 348(S/T)
FFE	831	A8-6ZA-191-130	6ZA-1 FEENM
FFE	831	A8-8ZA-190-030	8ZA-1 FEUNM	A.....
J	831	87-A60-202-010	TERMINAL,ANT 4P MSP-154V-02	AB.....
J	832	87-A60-403-010	TERMINAL,ANT PAL 2P HSP-312V05
J	940	87-A60-633-010	CONN,2P H 2.5MM JMT
L	832	87-005-847-080	COIL,2.2UH(CECS)	AB.....
L	942	87-A50-019-010	COIL,OSC LW(COI)
L	941	87-A50-020-010	COIL,ANT LW(COI)
L	941	87-A50-022-010	COIL,ANT SW(COI)
L	944	87-A50-159-010	COIL,10MH K C2B
L	943	87-A50-522-080	COIL,1MH K CEC
L	942	87-A50-550-010	COIL,OSC SW-2N(COI)
L	952	87-A50-430-010	COIL,ANT MW(3BSW)
L	953	87-A50-431-010	COIL,OSC MW(3BSW)
L	951	8A-NF8-667-010	COIL,AM PACK 4(TOK)	AB.....
L	951	8A-NF8-668-010	COIL,AM PACK 2(TOK)
Q	836	87-A30-072-080	C-TR,RT1P 144C	AB.....
Q	835	89-327-143-080	TR,2SC2714 (0.1W)	AB.....
Q	953	89-503-602-080	C-FET,2SK360E
TC	942	87-011-253-080	TRIMER,30P LAR
TC	943	87-011-253-080	TRIMER,30P LAR
TC	941	87-011-254-080	TRIMER,20P LAR
		87-067-703-010	TAPPING SCREW, BVT2+3-10	AB.....
C	3	87-012-368-080	C-CAP,S 0.1-50 F	AB.....
C	4	87-012-368-080	C-CAP,S 0.1-50 F	AB.....
C	25	87-010-990-080	CAP,E 33-100 SME	AB.....
C	26	87-010-990-080	CAP,E 33-100 SME	AB.....
C	28	87-010-990-080	CAP,E 33-100 SME	AB.....
C	27	87-010-990-080	CAP,E 33-100 SME	AB.....
C	22	87-016-035-090	CAP, E 6800-35 VR	AB.....
C	21	87-016-035-090	CAP, E 6800-35 VR	AB.....
C	26	87-016-300-080	CAP,E 22-100 SME
C	28	87-016-300-080	CAP,E 22-100 SME
C	32	87-010-197-080	CAP, CHIP 0.01 DM	AB.....
C	34	87-010-247-080	CAP, ELECT 100-50V	AB.....
C	31	87-010-263-080	CAP, ELECT 100-10V	AB.....

ELECTRICAL MAIN PARTS LIST - 8/9

C	35	87-010-380-080	CAP, ELECT 47-16V	AB.....
C	36	87-010-381-080	CAP, ELECT 330-16V	AB.....
C	38	87-010-384-080	CAP, ELECT 100-25V	AB.....
C	39	87-010-384-080	CAP, ELECT 100-25V	AB.....
C	40	87-010-190-080	S CHIP F 0.01	AB.....
C	60	87-010-403-080	CAP, ELECT 3.3-50V	AB.....
C	82	87-010-260-080	CAP, ELECT 47-25V	AB.....
C	81	87-010-374-080	CAP, ELECT 47-10V	AB.....
C	80	87-010-401-080	CAP, ELECT 1-50V	AB.....
CN	1	87-A60-996-010	CONN,13P V BLK TAC-L13X-A3	AB.....
CN	91	87-A60-619-010	CONN,2P V 2MM JMT	AB.....
CN	92	87-A60-619-010	CONN,2P V 2MM JMT	AB.....
CNA	3	87-049-919-010	CONN,3P EH V WHT	AB.....
CNA	2	8A-NF3-640-110	CONN ASSY,3P (VM) ANF-3	AB.....
CNA	1	8A-NF8-653-010	CONN ASSY,9P TID-A(480)	AB.....
D	1	87-A40-673-090	DIODE,D10XB20	AB.....
D	28	87-A40-553-080	DIODE,1N4003 LES	AB.....
D	29	87-A40-781-080	ZENER,UZ36BSA	AB.....
D	33	87-070-274-080	DIODE,1N4003 SEM	AB.....
D	65	87-A40-768-080	ZENER,UZ16BSA	AB.....
Q	2	87-A30-217-010	TR,2SB1436(R)	AB.....
Q	13	89-213-702-010	TR,2SB1370 (1.8W)	AB.....
Q	84	87-A30-218-080	TR,2SB1237(Q)	AB.....
WH	1	87-A90-510-010	HLDR,WIRE 2.5-9P	AB.....
C	606	87-010-318-080	C-CAP,S 47P-50 CH	AB.....
C	604	87-010-318-080	C-CAP,S 47P-50 CH	AB.....
C	605	87-010-318-080	C-CAP,S 47P-50 CH	AB.....
C	603	87-010-318-080	C-CAP,S 47P-50 CH	AB.....
C	616	87-010-180-080	C-CER 1500P	AB.....
C	613	87-010-197-080	CAP, CHIP 0.01 DM	AB.....
C	617	87-010-198-080	CAP, CHIP 0.022	AB.....
C	619	87-010-263-080	CAP, ELECT 100-10V	AB.....
C	612	87-010-369-080	C-CAP,S 0.033-25 K B	AB.....
C	618	87-010-401-080	CAP, ELECT 1-50V	AB.....
C	611	87-010-956-080	CHIP-CAP,S 0.068-25B	AB.....
C	614	87-016-669-080	C-CAP,S 0.1-25 K B	AB.....
C	621	87-010-197-080	CAP, CHIP 0.01 DM	AB.....
C	628	87-010-400-080	CAP, ELECT 0.47-50V	AB.....
C	627	87-010-400-080	CAP, ELECT 0.47-50V	AB.....
C	623	87-010-401-080	CAP, ELECT 1-50V	AB.....
C	624	87-010-401-080	CAP, ELECT 1-50V	AB.....
C	629	87-010-992-080	C-CAP,S 0.047-25 B	AB.....
C	626	87-010-992-080	C-CAP,S 0.047-25 B	AB.....
C	620	87-016-669-080	C-CAP,S 0.1-25 K B	AB.....
C	632	87-010-185-080	C-CAP,S 3900P-50 B	AB.....
C	631	87-010-185-080	C-CAP,S 3900P-50 B	AB.....
C	634	87-010-196-080	CHIP CAPACITOR,0.1-25	AB.....
C	630	87-010-383-080	CAP, ELECT 33-25V	AB.....
C	639	87-010-405-080	CAP, ELECT 10-50V	AB.....
C	637	87-A10-307-080	CAP,M 0.1-50 J	AB.....
C	636	87-A10-307-080	CAP,M 0.1-50 J	AB.....
C	638	87-A10-307-080	CAP,M 0.1-50 J	AB.....
C	635	87-A10-307-080	CAP,M 0.1-50 J	AB.....
C	643	87-010-196-080	CHIP CAPACITOR,0.1-25	AB.....
C	641	87-010-401-080	CAP, ELECT 1-50V	AB.....
C	642	87-010-401-080	CAP, ELECT 1-50V	AB.....
C	644	87-010-401-080	CAP, ELECT 1-50V	AB.....
C	679	87-010-196-080	CHIP CAPACITOR,0.1-25	AB.....
C	675	87-010-196-080	CHIP CAPACITOR,0.1-25	AB.....
C	673	87-010-197-080	CAP, CHIP 0.01 DM	AB.....
C	672	87-010-322-080	C-CAP,S 100P-50 CH	AB.....
C	671	87-010-322-080	C-CAP,S 100P-50 CH	AB.....
C	682	87-010-196-080	CHIP CAPACITOR,0.1-25	AB.....
C	680	87-010-197-080	CAP, CHIP 0.01 DM	AB.....
CN	606	87-099-566-010	CONN,7P TUC-P7P-B1	AB.....
CN	605	87-099-568-010	CONN,11P TUC-P11P-B1	AB.....
CN	601	87-099-719-010	CONN,30P TYK-B(X)	AB.....
CN	602	87-A60-131-010	CONN,6P V FE	AB.....
D	602	87-A40-745-080	ZENER,UZ4.7BSA	AB.....
IC	601	87-A21-452-030	C-IC,BD3876KS2	AB.....
J	601	87-A60-885-010	JACK,PIN 6P R/W MSC	AB.....
Q	602	87-A30-269-040	C-FET,2SJ461-T1	AB.....
C	506	87-010-184-080	CHIP CAPACITOR 3300P(K)	AB.....
C	502	87-010-196-080	CHIP CAPACITOR,0.1-25	AB.....
C	501	87-010-263-080	CAP, ELECT 100-10V	AB.....
C	505	87-012-141-080	CHIP-CAPACITOR,0.22-16F	AB.....
C	504	87-016-460-080	C-CAP,S 0.22-16 B	AB.....
C	503	87-016-460-080	C-CAP,S 0.22-16 B	AB.....
C	508	87-016-669-080	C-CAP,S 0.1-25 K B	AB.....
C	509	87-016-669-080	C-CAP,S 0.1-25 K B	AB.....
C	507	87-A11-550-080	C-CAP,S 820P-50 K B	AB.....
C	517	87-010-183-080	C-CAP,S 2700P-50 B	AB.....
C	518	87-010-183-080	C-CAP,S 2700P-50 B	AB.....
C	510	87-010-184-080	CHIP CAPACITOR 3300P(K)	AB.....
C	514	87-010-374-080	CAP, ELECT 47-10V	AB.....
C	515	87-010-401-080	CAP, ELECT 1-50V	AB.....
C	516	87-010-401-080	CAP, ELECT 1-50V	AB.....
C	513	87-010-544-080	CAP, ELECT 0.1-50V	AB.....
C	512	87-016-460-080	C-CAP,S 0.22-16 B	AB.....
C	511	87-A11-550-080	C-CAP,S 820P-50 K B	AB.....
C	535	87-010-178-080	CHIP CAP 1000P	AB.....
C	533	87-010-196-080	CHIP CAPACITOR,0.1-25	AB.....

ELECTRICAL MAIN PARTS LIST - 9/9

C	536	87-010-196-080	CHIP CAPACITOR,0.1-25	AB.....
C	532	87-010-196-080	CHIP CAPACITOR,0.1-25	AB.....
C	538	87-010-318-080	C-CAP,S 47P-50 CH	AB.....
C	531	87-010-560-080	CAP,E 10-50 GAS	AB.....
C	534	87-012-156-080	C-CAP,S 220P-50 CH	AB.....
C	541	87-010-178-080	CHIP CAP 1000P	AB.....
FB	501	87-008-372-080	FILTER, EMI BL OIRNI	AB.....
IC	501	87-A21-018-040	C-IC,M65849BFP631D	AB.....
C	201	87-010-402-080	CAP, ELECT 2.2-50V	AB.....
C	202	87-010-402-080	CAP, ELECT 2.2-50V	AB.....
C	205	87-010-404-080	CAP, ELECT 4.7-50V	AB.....
C	209	87-016-460-080	C-CAP,S 0.22-16 B	AB.....
C	207	87-016-669-080	C-CAP,S 0.1-25 K B	AB.....
C	208	87-016-669-080	C-CAP,S 0.1-25 K B	AB.....
C	219	87-010-183-080	C-CAP,S 2700P-50 B	AB.....
C	215	87-010-197-080	CAP, CHIP 0.01 DM	AB.....
C	216	87-010-197-080	CAP, CHIP 0.01 DM	AB.....
C	217	87-010-198-080	CAP, CHIP 0.022	AB.....
C	218	87-010-198-080	CAP, CHIP 0.022	AB.....
C	214	87-010-956-080	CHIP-CAP,S 0.068-25B	AB.....
C	213	87-010-956-080	CHIP-CAP,S 0.068-25B	AB.....
C	211	87-012-365-080	C-CAP,S 0.027-25VBK	AB.....
C	212	87-012-365-080	C-CAP,S 0.027-25VBK	AB.....
C	210	87-016-460-080	C-CAP,S 0.22-16 B	AB.....
C	227	87-010-112-080	CAP, ELECT 100-16V	AB.....
C	223	87-010-178-080	CHIP CAP 1000P	AB.....
C	224	87-010-178-080	CHIP CAP 1000P	AB.....
C	226	87-010-182-080	C-CAP,S 2200P-50 B	AB.....
C	225	87-010-182-080	C-CAP,S 2200P-50 B	AB.....
C	220	87-010-183-080	C-CAP,S 2700P-50 B	AB.....
C	221	87-010-188-080	CAP,CHIP 6800P	AB.....
C	222	87-010-188-080	CAP,CHIP 6800P	AB.....
C	228	87-010-196-080	CHIP CAPACITOR,0.1-25	AB.....
C	229	87-010-322-080	C-CAP,S 100P-50 CH	AB.....
C	230	87-010-322-080	C-CAP,S 100P-50 CH	AB.....
C	231	87-010-322-080	C-CAP,S 100P-50 CH	AB.....
CN	201	87-A60-546-010	CONN,11P H GRY TUC-P11X-C1	AB.....
IC	201	87-A20-869-040	C-IC,M62449FP	AB.....

MECHANICAL PARTS LIST - 1/2

NOTE: The characters in the suffix column indicate the part usage.

REF.NO	PARTS NO.	KANRI NO.	DESCRIPTION	SUFFIX
LHSM	XX	A
HASM	XX	B
88-NF3-090-010			RING, FOOT	AB
8A-NF3-028-010			BOX, CASS L	AB
8A-NF3-029-010			BOX, CASS R	AB
8A-NF3-032-010			PANEL, FR H
8A-NF3-033-010			PANEL, FR EZ
8A-NF3-034-010			PANEL, FR LH	AB
8A-NF3-039-010			PANEL, CASS L	AB
8A-NF3-040-010			PANEL, CASS R	AB
8A-NF3-042-010			PANEL ASSY, TRAY	AB
8A-NF3-047-010			PANEL, CD	AB
8A-NF3-048-010			PANEL, REFLECTOR- CD	AB
8A-NF3-049-010			PANEL, KEY-CD	AB
8A-NF3-051-010			WINDOW, DISP	AB
8A-NF3-058-010			WINDOW, CASS L	AB
8A-NF3-059-010			WINDOW, CASS R	AB
8Z-NF3-048-010			COVER, BOTTOM	AB
* 8A-NF3-001-010			CABI, FR	AB
* 8A-NF3-002-010			CABI, FR EZ
* 8A-NF3-011-010			CABI, REAR LHSM
* 8A-NF3-012-010			CABI, REAR HRJSM
* 8A-NF3-014-010			CABI, REAR EZSM
* 8A-NF3-015-010			CABI, REAR HASM	AB
* 8A-NF3-026-010			CABI, BOTTOM	AB
* 8A-NF3-027-010			CABI, STEEL	AB
8A-NF3-061-010			KEY, GEO	AB
8A-NF3-062-010			KEY, DSP	AB
8A-NF3-063-010			KEY ASSY, OPE	AB
8A-NF3-065-010			KEY, KARAOKE	AB
8A-NF3-066-010			KEY, REC
8A-NF3-067-010			KEY, BBE	AB
8A-NF3-068-010			KEY, JOG	AB
8A-NF3-069-010			KEY, SPICE	AB
8A-NF3-070-010			KEY, ECO	AB
8A-NF3-071-010			KEY, CD	AB
8A-NF3-072-010			KEY, FUNC	AB
8A-NF3-073-010			KEY, REC U	AB
8A-NF3-074-010			KEY, REC H
8A-NF3-076-010			RING, VOL	AB
8A-NF3-077-010			RING, JOG H	AB
8A-NF3-078-010			RING, JOG U
8A-NF3-081-010			KNOB, RTRY VOL	AB
8A-NF3-082-010			KNOB, RTRY JOG	AB
81-532-080-010			LABEL, CASS. COMPT	AB
8A-NF3-087-010			REFLECTOR, JOG	AB
8A-NF3-088-010			REFLECTOR, FUNC	AB
8A-NF3-089-010			REFLECTOR, CD	AB
8A-NF3-090-010			REFLECTOR, CASS L	AB
8A-NF3-091-010			REFLECTOR, CASS R	AB
8Z-NF3-643-010			CONN ASSY, 3P PB	AB
8Z-NF3-644-010			CONN ASSY, 8P RPB	AB
84-ZG1-245-210			CAP, OPTICAL	AB
82-NF5-218-010			SPR-T, EJECT 1 (SIN)	AB
82-NF5-219-010			SPR-T, EJECT 2 (SIN)	AB
82-NF5-229-010			PLATE, LOCK	AB
86-NF9-224-010			SPR-C, LOCK	AB
87-064-185-010			HLDR, WIRE	AB
87-NF4-216-010			HLDR, LOCK 1	AB
87-NF4-217-110			HLDR, LOCK 2	AB
87-NF4-221-010			HLDR, CABLE	AB
87-NF8-220-010			DMPR, 150	AB
8A-NF3-225-010			COVER, HLDR	AB
8A-NF3-228-010			HLDR, PWB-PT	AB
8A-NF3-229-010			HLDR, BRACKET	AB
* 8A-NF3-201-010			GUIDE, LED-FUNC	AB
* 8A-NF3-203-010			GUIDE, LED-CD	AB
* 8A-NF3-213-010			HLDR, HT-SINK L	AB
* 8A-NF3-214-010			HLDR, HT-SINK R	AB
* 8A-NF3-221-010			HLDR, IC-VM	AB
* 8A-NF3-223-010			HLDR, FAN	AB
* 8A-NF8-206-010			HLDR, PWB M	AB
87-067-579-010			TAPPING SCREW, BVT2+3-8	AB
87-067-581-010			TAPPING SCREW, BVT2+3-15	AB
87-067-641-010			UTT2+3-8 (W/O SLOT)BL	AB
87-067-689-010			TAPPING SCREW, BVTT+3-8	AB
87-067-703-010			TAPPING SCREW, BVT2+3-10	AB
87-067-758-010			BVT2+3-12 W/O SLOT	AB
87-067-761-010			TAPPING SCREW, BVT2+3-10	AB
87-067-975-010			S-SCREW, IT+4-8	AB
87-591-095-410			TAPPING SCREW, QIT+3-8 (GLD)	AB
87-721-096-410			QT2+3-10 GLD	AB
87-721-097-410			QT2+3-12 GLD	AB
87-NF4-224-010			S-SCREW, IT3B+3-8 CU	AB
* 87-067-822-010			BVT2+3-20 W/O SLOT	AB
* 8A-NF3-208-010			HLDR, CHAS L	AB
* 8A-NF3-209-010			HLDR, CHAS R	AB

MECHANICAL PARTS LIST - 2/2

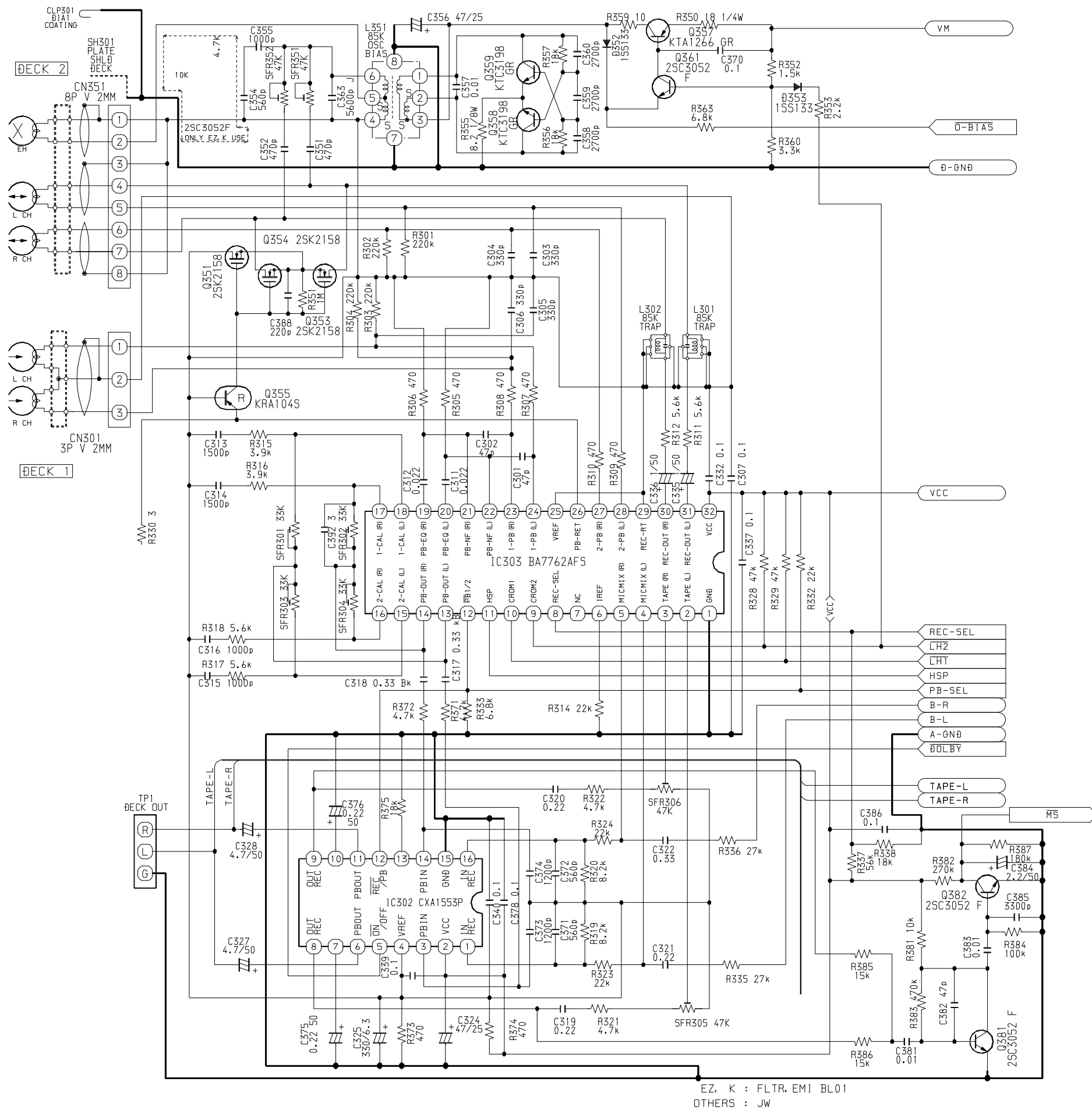
*		8A-NF3-210-010	HLDR, SIDE L	AB.....
*		8A-NF3-211-010	HLDR, SIDE R	AB.....
*		8A-NF3-212-010	HLDR, REAR	AB.....
		87-010-260-080	CAP, ELECT 47-25V	AB.....
		87-018-036-080	CAP, TC-S 220P-50 B	AB.....
		87-085-185-010	BUSHING, AC CORD (E)	AB.....
		87-A90-562-010	F-BEAD, 9.5-17.5-28.5 BRH	AB.....
		87-A91-423-010	FAN, AD0612DS-D7OGL	AB.....
		87-A91-711-010	FAN, 3110GL-B4W-B34-H02 -400MM	AB.....
		88-905-081-110	FF-CABLE, 5P 1.25	AB.....
		88-906-481-110	FF-CABLE, 6P 1.25 480MM	AB.....
		88-908-381-110	FF-CABLE, 8P 1.25	AB.....
		88-914-481-110	FF-CABLE, 14P 1.25 480MM	AB.....
		88-915-161-110	FF-CABLE, 15P 1.25	AB.....
C	118	87-010-401-080	CAP, ELECT 1-50V	AB.....
C	117	87-010-401-080	CAP, ELECT 1-50V	AB.....
F	102	87-035-458-010	FUSE, 4A 250V T W/C
F	101	87-035-458-010	FUSE, 4A 250V T W/C
F	101	87-035-459-010	FUSE, 5A 250V	AB.....
F	102	87-035-459-010	FUSE, 5A 250V	AB.....
FB	101	87-A90-562-010	F-BEAD, 9.5-17.5-28.5 BRH
PT	101	8A-NF3-602-010	PT, LH EI105-60 ANF-3	AB.....
PT	101	8A-NF3-603-010	PT, HR EI96-60 ANF-3
PT	101	8A-NF3-604-010	PT, EZ EI96-60 ANF-3
W	101	87-A80-148-010	AC CORD ASSY, E BLK	AB.....
		87-067-703-010	TAPPING SCREW, BVT2+3-10	AB.....
		87-067-703-010	TAPPING SCREW, BVT2+3-10	AB.....
WH	103	87-A90-459-010	HLDR, WIRE 2.5-5P
WH	101	87-A90-460-010	HLDR, WIRE 2.5-7P	AB.....
		87-067-703-010	TAPPING SCREW, BVT2+3-10	AB.....
WH	1	87-A90-510-010	HLDR, WIRE 2.5-9P	AB.....

ACCESSORIES / PACKAGE LIST - 1/1

NOTE: The characters in the suffix column indicate the part usage.

REF.NO	PARTS NO.	KANRI NO.	DESCRIPTION	SUFFIX
LHSM		XX		A
HASM		XX		B
8A-NF3-901-010			IB,H (ECA) M	
8A-NF3-902-010			IB,LH (ESP) M	A
8A-NF3-906-010			IB,EZ (9L) M	
8A-NF3-907-010			IB,HA (S) NEA-ARG	B
87-006-225-010			AM LOOP ANT NC2	AB
87-006-269-010			AM LOOP ANT (UN)	
87-043-115-010			ANT,FEEDER FM	AB
87-A90-118-010			ANT,WIRE FM (Z)	
87-A90-119-010			ANT,WIRE SW(5M)	
87-A91-017-010			PLUG,CONVERSION JT-0476	
8Z-NF5-702-010			RC UNIT,RC-ZAS04	AB

SCHEMATIC DIAGRAM - 2 (MAIN 2/3 : DECK SECTION)



	WITH BOLDY	W/O_BOLDY (R+R)	W/O_BOLDY (R+1_1+1)
JR303	C-JR	X	X
JR304	C-JR	X	X
C379	X	22/25	22/50
C380	X	22/50	22/50
C313	1200P	1000P	1500P
C314	1200P	1000P	1500P
R315	4.7K	5.6K	5.6K
R316	4.7K	5.6K	5.6K
C315	1000P	1000P	2200P
C316	1000P	1000P	2200P
R317	5.6K	5.6K	5.6K
R318	5.6K	5.6K	5.6K
C391	270P	56P	56P
C392	270P	56P	56P
C393	270P	56P	56P
C394	270P	56P	56P
R395	X	100K	100K
R396	X	100K	100K
R397	X	100K	100K
R398	X	100K	100K
SFR301	33K	X	X
SFR302	33K	X	X
SFR303	33K	X	X
SFR304	33K	X	X
C317	0.33 BK	C-JR	C-JR
C318	0.33 BK	C-JR	C-JR
R371	4.7K	39	39
R372	4.7K	39	39
C375	0.22/50	X	X
C376	0.22/50	X	X
R375	18K	X	X
JR301	X	C-JR	C-JR
JR302	X	C-JR	C-JR

	WITH BOLDY	W/O_BOLDY (R+R_1+1+1)
IC302	CXA1553P	X
C309	X	0.1
C310	X	0.1
C319	0.22	X
C320	0.22	X
R321	4.7K	X
R322	4.7K	X
SFR305	50K	X
SFR306	50K	X
C371	820P	X
C372	820P	X
C373	1200P	0.15
C374	1200P	0.15
R319	4.7K	22K
R320	4.7K	22K
R323	22K	C-JR
R324	22K	C-JR
C321	0.22	0.33
C322	0.22	0.33
R335	27K	22K
R336	27K	22K
R391	X	15K
R392	X	15K
R385	15K	X
R386	15K	X
R383	470K	820K
C387	X	270P
C382	47P	15P
R389	C-JR	6.8K
Q383	X	25A1235
C385	3300P	X

	USE BA7762AFS	USE HA12211
Q360	X	25K2158
R330	X	C-JR
R331	X	33K
JR336	X	C-JR

	EZ K MODEL	EXCEPT EZ K
Q356	25C3052F	X
R362	4.7K	X
R365	10K	X

	EZ K MODEL	EXCEPT EZ
FB301	EM1BL01RN	JW

T-ANF3/4-DECK-ALL

EZ. K : FLTR. EMI BL01
OTHERS : JW

TA LOW TA LOW
SCHEMATIC DIAGRAM (DECK)
8A NF6 631 01
ALL
ANF3/4-DECK

SCHEMATIC DIAGRAM - 3 (MAIN 3/3 : TUNER SECTION)

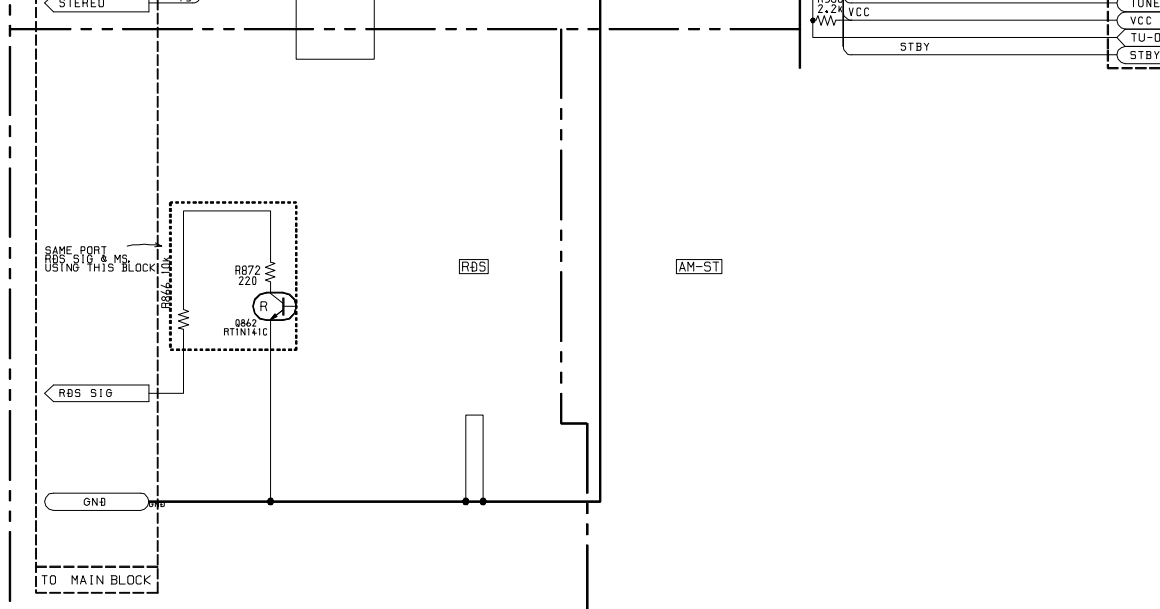
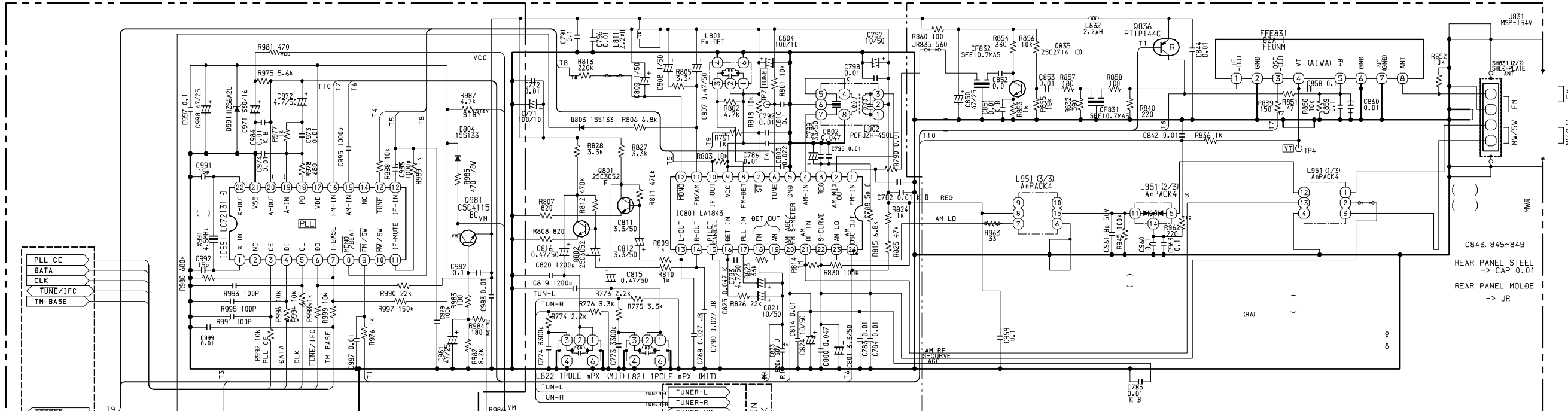
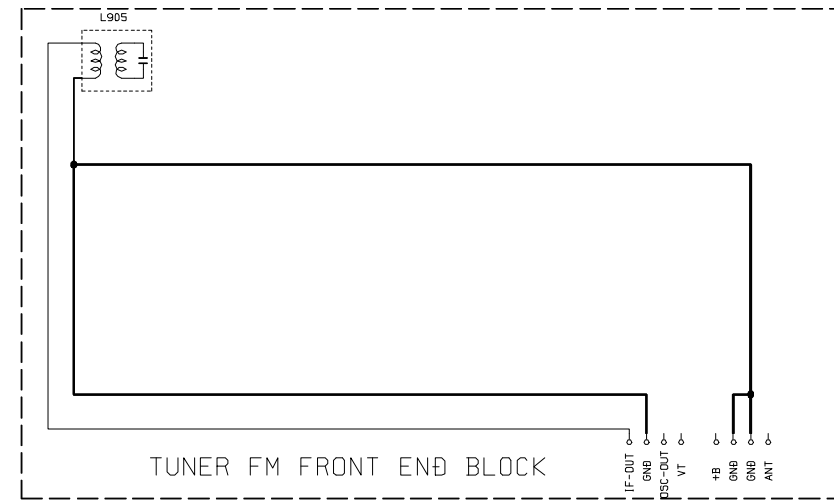
IFT COIL

	PARTS NO./ PARTS CODE		
	U/LH, EZ, K, G, V	HE/HR/HC	D/HB
1ST	87-A91-551-01 FLTR. PCFJZH-450 L (TOK)	87-A91-552-01 FLTR. CFMT-450AL (TOK)	87-A91-553-01 FLTR. PCFMT-06DL (TOK)
2ND			
3RD			

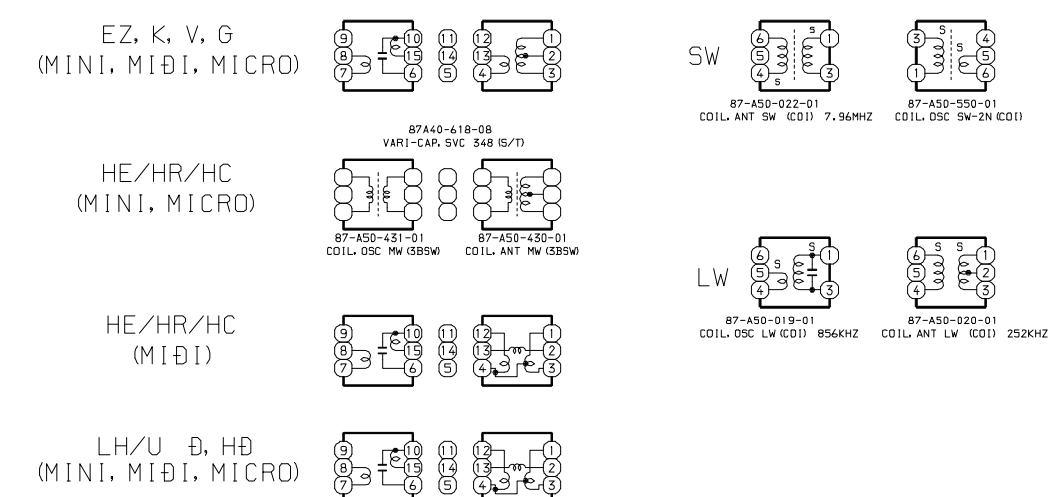
AM PACK

	PARTS NO./ PARTS CODE	
	U/LH, B/HB, V	EZ, K, G
1ST	8A-NF8-667-01 COIL. AM PACK4 (TOK)	8A-NF8-668-01 COIL. AM PACK (TOK)
2ND		
3RD		

*EXCEPT SW BAND MODEL HE/HR/HC



AM PACK OSC COIL ANT COIL



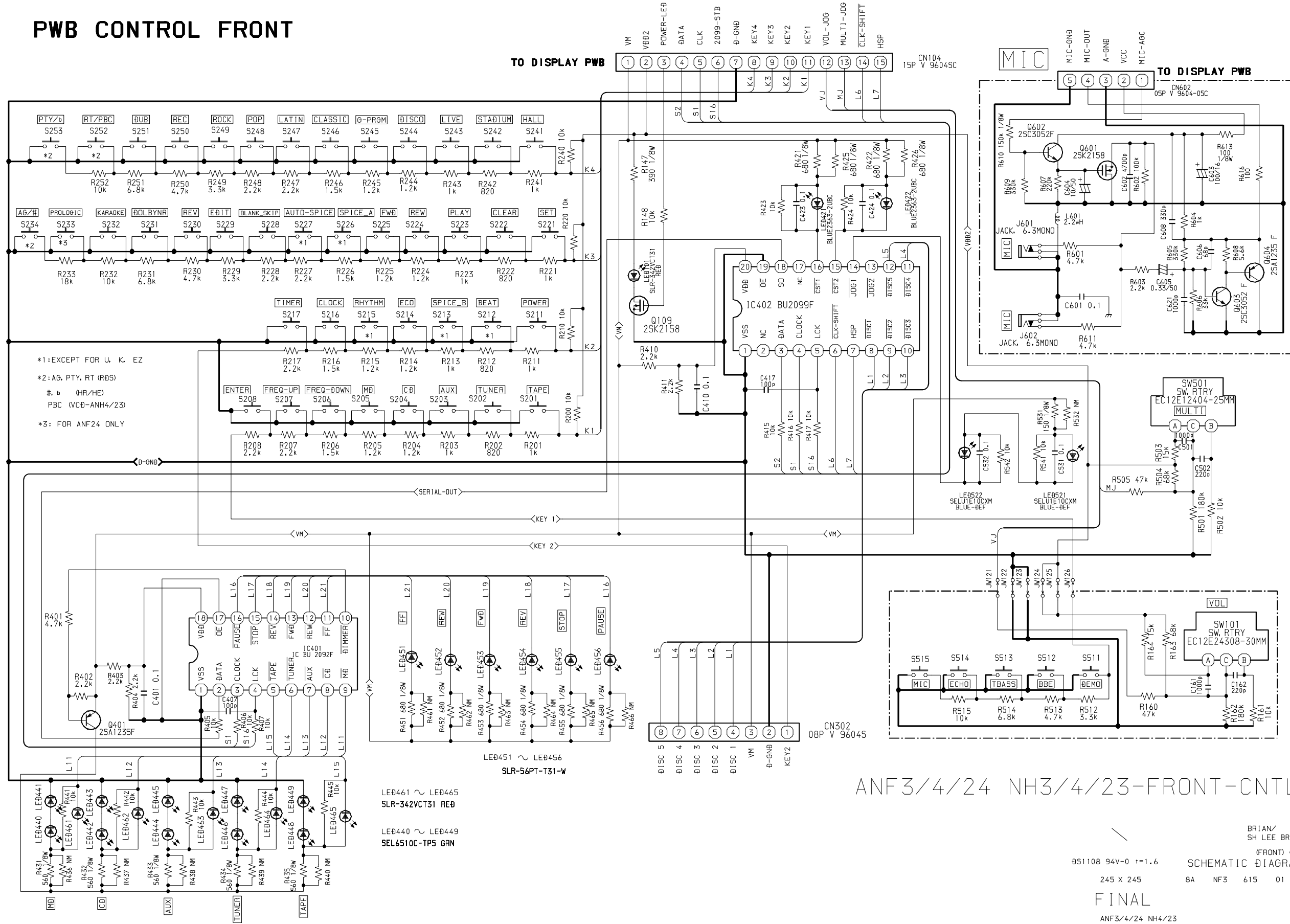
G. TAKEZAWA (TUNER) SCHEMATIC DIAGRAM

ALL ANF-3/4

27 DEC 1999

T-ANF3/4-TUNER-P1

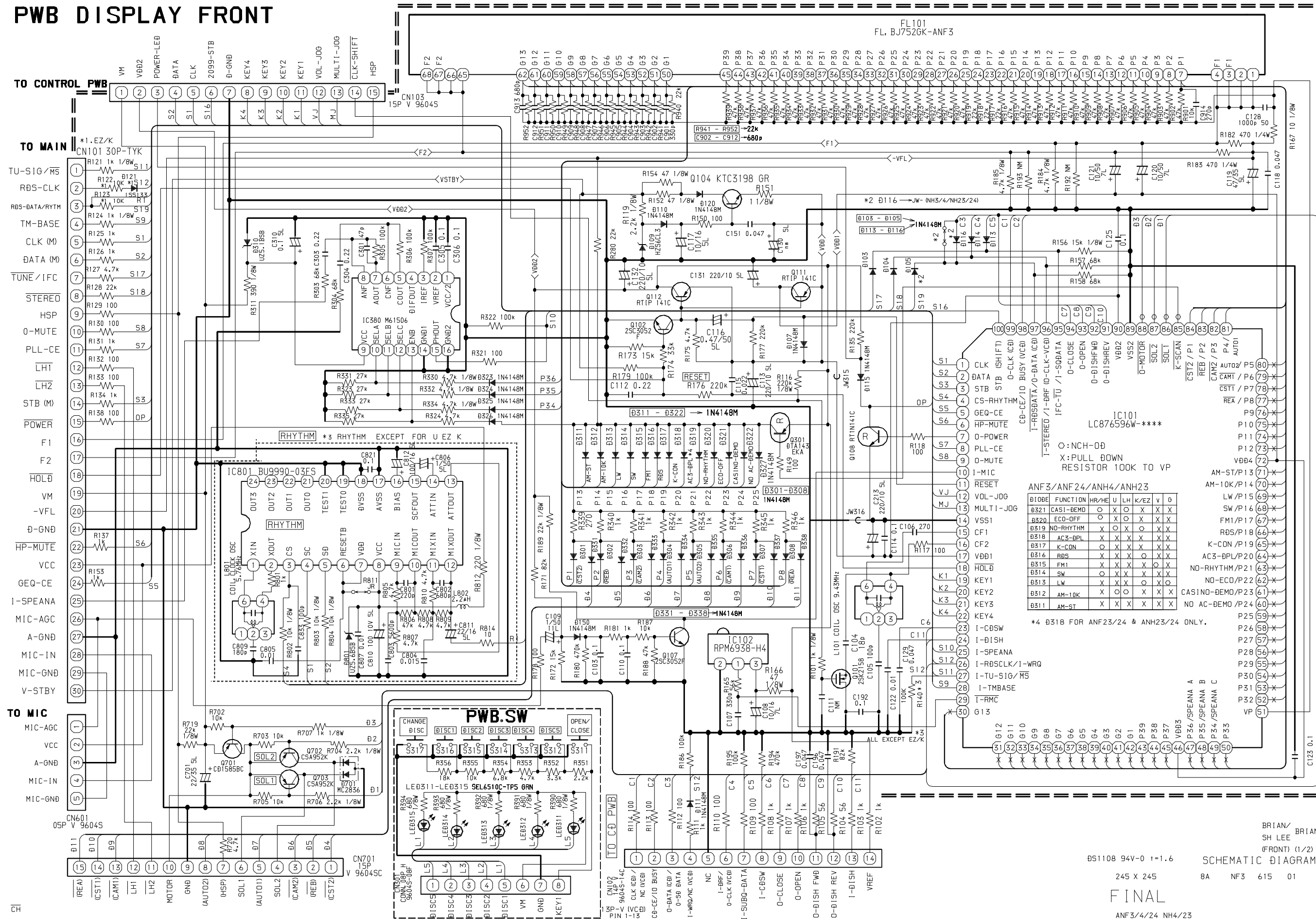
PWB CONTROL FRONT



ANF3/4/24 NH3/4/23-FRONT-CNTL

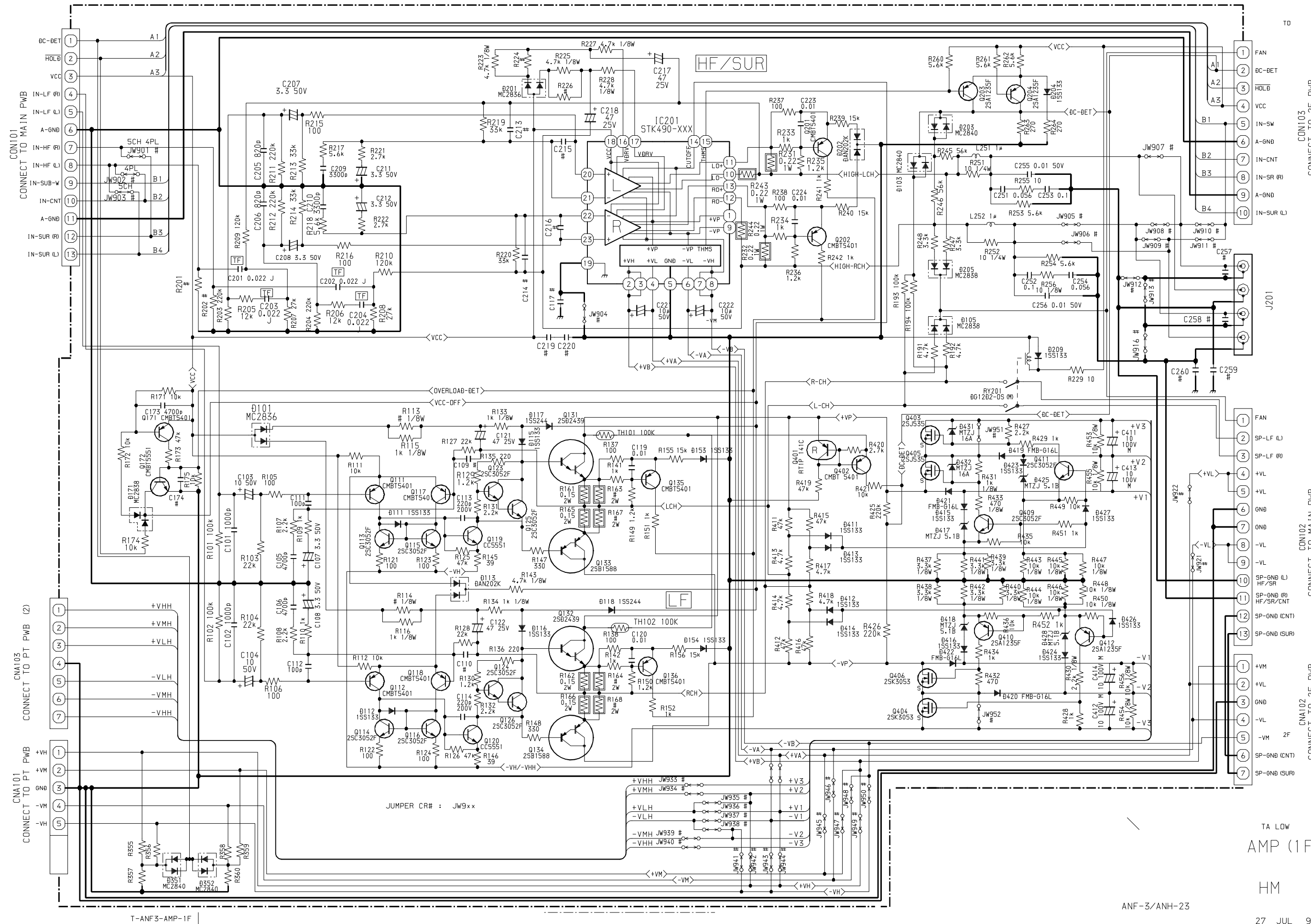
BRIAN/
SH LEE BRIAN
(FRONT) (2/2)
SCHEMATIC DIAGRAM
DS1108 94V-0 1=1.6
245 X 245 8A NF3 615 01
FINAL
ANF3/4/24 NH4/23

PWB DISPLAY FRONT



BRIAN / BRIAN
SH LEE (FRONT) (1/2)
SCHEMATIC DIAGRAM
8A NF3 615 01
245 X 245
FINAL
ANF3/4/24 NH4/23

SCHEMATIC DIAGRAM - 6 (AMP)

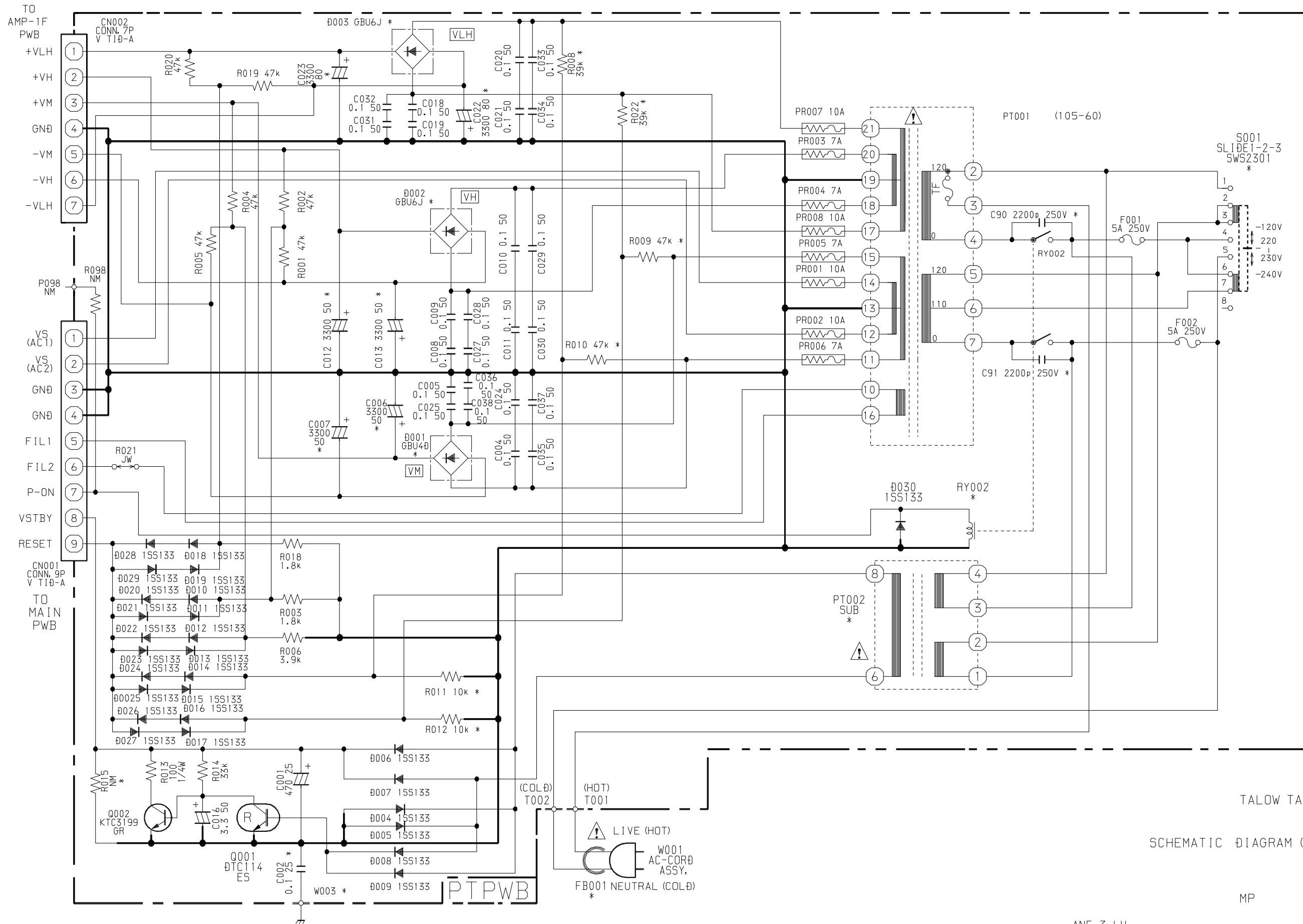


TA LOW
AMP (1F)
HM

ANF-3/ANH-23

27 JUL 99

SCHEMATIC DIAGRAM - 7 (PT)



TALOW TALOW

SCHEMATIC DIAGRAM (PT)

MP

ANF-3 LH

20 DEC 1999

アイワ株式会社 〒110-8710 東京都台東区池之端1-2-11 ☎03(3827)3111 (代表)
AIWA CO.,LTD. 2-11, IKENOHATA 1-CHOME, TAITO-KU, TOKYO 110, JAPAN TEL:03 (3827) 3111