

SERVICE MANUAL

CASSETTE RECORDER

BASIC TAPE MECHANISM : ZZM-6 R1NF

- This Service Manual is the "Revision Publishing" and replaces "Simple Manual" TP-VS615(YH,YS,YJ,YL), (S/M Code No. 09-006-435-2T1).

SPECIFICATIONS

Track system: 2 tracks 1 channel, monaural
Frequency response: 250-8000 Hz (4.8 cm/sec) EIAJ
Microphone: Electret condenser microphone (monaural)
Maximum output: 300 mW (EIAJ/DC)
Input jack: EXT MIC jack (monaural mini-jack) (1)
Output jack: EARPHONE jack (monaural mini-jack) (1)
Other jack: DC 3 V jack
Speaker: Diameter 50 mm, 8 ohms
Recording system: DC bias
Erasing system: Magnet erasure
Recording speed: Approx. 4.8 cm/sec. with the REC MODE switch set to NORMAL
 Approx. 1.6 cm/sec. with the REC MODE switch set to 3 x
Power source: DC 3V using two R6 (size AA) dry cell batteries
 AC house current using the AC adaptor (Aiwa AC-D302)

Battery life:

Battery	EIAJ Recording	EIAJ 10mW
Manganese batteries (R6P)	Approx. 5 hours	Approx. 4 hours
Alkaline batteries (LR6)	Approx. 19 hours	Approx. 13.5 hours

Maximum outside

dimensions (W x H x D): 84.3 (W) x 111.7 (H) x 33.4 (D) mm (excluding projecting parts and controls)
Weight: Approx. 156.4 g (excluding batteries)

- Design and specifications are subject to change without notice.

ACCESSORIES / PACKAGE LIST

REF.NO.	PART NO.	KANRI NO.	DESCRIPTION
1	8A-HT6-902-010	IB, YHJ (ECC) S<YH>	
1	8A-HT6-903-010	IB, YJ (ECA) S<YJ>	
1	8A-HT6-904-010	IB, YL (3L) S<YL>	
1	8A-HT6-905-010	IB, Y (EGF) S<Y>	
1	8A-HT6-906-010	IB, Y (SID) S<Y>	
1	8A-HT6-907-010	IB, Y (PHNCZ) S<Y>	
2	87-PD3-050-010	STRAP, HAND	

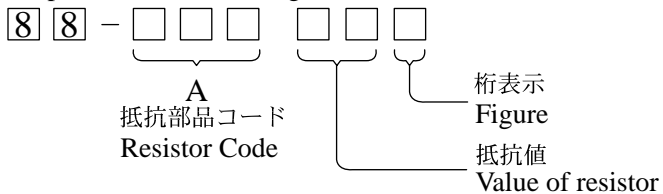
ELECTRICAL MAIN PARTS LIST

REF. NO.	PART NO.	KANRI NO.	DESCRIPTION	REF. NO.	PART NO.	KANRI NO.	DESCRIPTION
IC				C314	87-A12-317-080		C-CAP,U 0.1-50 Z F
	87-A21-657-080		C-IC,AN7086S	C451	87-A12-317-080		C-CAP,U 0.1-50 Z F
	87-A21-224-040		C-IC,LB1877M	C452	87-A12-317-080		C-CAP,U 0.1-50 Z F
	87-017-643-080		IC,MM1206XF	C453	87-016-396-080		C-CAP,U 0.22-16F
TRANSISTOR				J101	87-A61-294-010		JACK,3.5 MONO W/SW
	87-026-411-080		C-TR RN1304	J102	87-A61-294-010		JACK,3.5 MONO W/SW
	89-508-804-080		CHIP FET 2SK880Y	J103	87-A61-124-010		JACK,DC DIA2.75 BLK TC
	89-341-165-080		CHIP TRANSISTOR 2SC4116GR	MIC101	84-TM1-639-010		ECM,KUC3523
	89-333-266-080		CHIP TR,2SC3326B	S101	87-036-082-010		SLIDE SWITCH, 2-2-2
	87-026-414-080		C-TR RN1307	S103	87-A90-423-010		SW,LEAF
	87-026-417-080		C-TR,RN1310	S141	87-036-379-180		C-SW,SL1-1-2 SS350
	87-A30-184-070		C-FET,2SJ106Y	S151	87-036-379-180		C-SW,SL1-1-2 SS350
	87-A30-179-010		FET,2SJ107GR	S182	87-036-379-180		C-SW,SL1-1-2 SS350
DIODE				S301	87-A90-423-010		SW,LEAF
	87-A40-822-040		C-DIODE,CRS01	SFR301	87-A91-653-040		C-SFR,K 33K H RH03AEC
	87-001-167-080		DIODE,1SS302 (100MA)	SFR302	87-A91-653-040		C-SFR,K 33K H RH03AEC
	87-001-166-080		DIODE,1SS301	SP101	87-A90-568-310		SPKR,DIA 50 8OHM
MAIN C.B				TH301	87-A90-542-080		C-THMS,NTH5G2M35A472K04TE
C101	87-010-501-040		E/CAP GAS 47-4	TH302	87-A90-542-080		C-THMS,NTH5G2M35A472K04TE
C102	87-A10-504-080		C-CAP,U 0.047-16 K B	VR101	87-024-654-010		VR,20KA DIA 14
C103	87-010-504-080		C-CAP TN 0.47-25	VR301	87-A91-822-010		VR,RTRY 10KB H XV081PH1NCC-305
C104	87-010-787-080		CAP, U 0.022-25	LED C.B			
C105	87-016-317-080		C-CAP,TN 2.2-6.3	LED401	87-A91-355-040		C-LED,BR1112H-TR-RED
C106	87-012-282-080		CAP, U 4700P-50	LED402	87-A91-357-040		C-LED,PY1112H-TR-GRN
C107	87-012-278-080		C-CAP,U2200P-50	LED403	87-A91-356-040		C-LED,AY1112H-TR-YEL
C108	87-016-317-080		C-CAP,TN 2.2-6.3	LED404	87-A91-355-040		C-LED,BR1112H-TR-RED
C109	87-A10-952-080		C-CAP,TN 22-4 M A MCM	S104	87-036-379-180		C-SW,SL1-1-2 SS350
C110	87-016-562-080		C-CAP,TN 4.7-10 SV A	S303	87-A90-968-080		C-SW,SL 1-2-2 SSSS82
C111	87-016-562-080		C-CAP,TN 4.7-10 SV A	S304	87-A90-968-080		C-SW,SL 1-2-2 SSSS82
C112	87-010-788-080		C-CAP,U 0.033-2.5F				
C113	87-A10-262-080		C-CAP,U 1-10 ZF				
C114	87-012-274-080		CHIP CAP,U 1000P-50B				
C115	87-012-267-080		C-CAP,U 270P-50 B				
C118	87-010-787-080		CAP, U 0.022-25				
C119	87-012-267-080		C-CAP,U 270P-50 B				
C120	87-A10-262-080		C-CAP,U 1-10 ZF				
C121	87-012-282-080		CAP, U 4700P-50				
C122	87-016-396-080		C-CAP,U 0.22-16F				
C123	87-016-562-080		C-CAP,TN 4.7-10 SV A				
C124	87-016-317-080		C-CAP,TN 2.2-6.3				
C125	87-010-820-040		CAP,E 47-4				
C126	87-010-503-040		CAP,E 220-4 GAS				
C128	87-A10-262-080		C-CAP,U 1-10 ZF				
C131	87-010-824-040		CAP,E 220-2				
C132	87-016-396-080		C-CAP,U 0.22-16F				
C133	87-010-501-040		E/CAP GAS 47-4				
C134	87-010-502-040		CAP ELECT GAS 100/4				
C141	87-010-821-040		CAP,E 100-4 (MJ)				
C142	87-A12-317-080		C-CAP,U 0.1-50 Z F				
C151	87-A10-262-080		C-CAP,U 1-10 ZF				
C152	87-015-922-080		C-CAP,TN 0.1-35				
C153	87-010-505-080		C-CAP TN 1-16				
C301	87-010-822-040		CAP,E 220-4 (MJ)				
C302	87-010-822-040		CAP,E 220-4 (MJ)				
C303	87-010-822-040		CAP,E 220-4 (MJ)				
C305	87-A10-260-080		C-CAP,U 0.1-16 K B				
C306	87-A10-260-080		C-CAP,U 0.1-16 K B				
C307	87-A10-260-080		C-CAP,U 0.1-16 K B				
C308	87-A10-828-080		C-CAP,U 0.33-6.3 K B				
C310	87-A10-260-080		C-CAP,U 0.1-16 K B				
C311	87-A12-317-080		C-CAP,U 0.1-50 Z F				
C312	87-A10-260-080		C-CAP,U 0.1-16 K B				
C313	87-A10-504-080		C-CAP,U 0.047-16 K B				

チップ抵抗部品コード／CHIP RESISTOR PART CODE

チップ抵抗部品コードの成り立ち

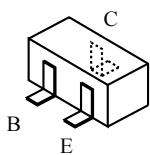
Chip Resistor Part Coding



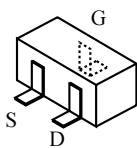
チップ抵抗
Chip resistor

容量 Wattage	種類 Type	許容誤差 Tolerance	記号 Symbol	寸法/Dimensions (mm)			抵抗コード : A Resistor Code : A	
				外形/Form	L	W		t
1/16W	1005	± 5%	CJ		1.0	0.5	0.35	104
1/16W	1608	± 5%	CJ		1.6	0.8	0.45	108
1/10W	2125	± 5%	CJ		2	1.25	0.45	118
1/8W	3216	± 5%	CJ		3.2	1.6	0.55	128

TRANSISTOR ILLUSTRATION



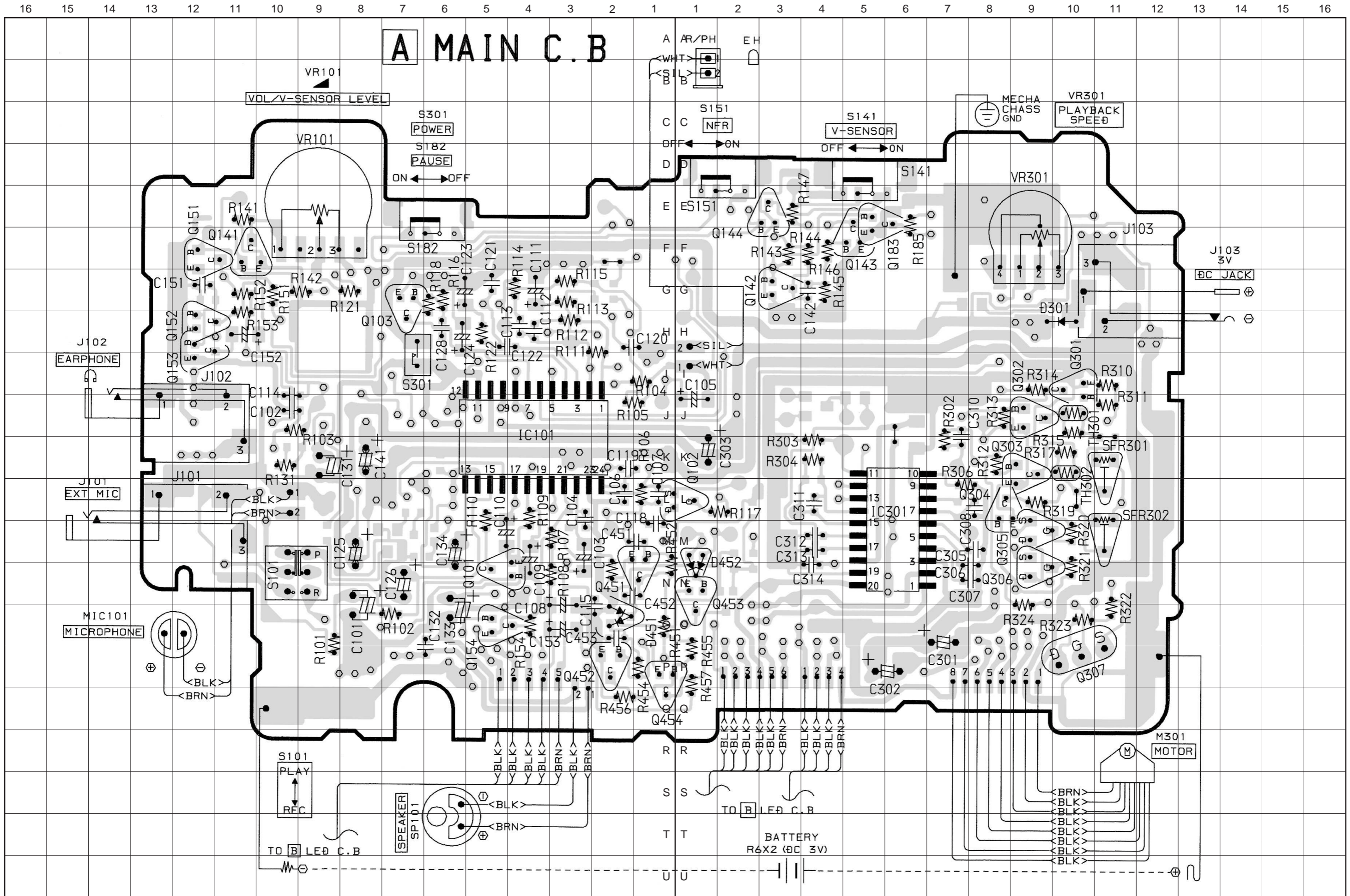
RN1304
RN1307
RN1310
2SC3326B
2SC4116GR

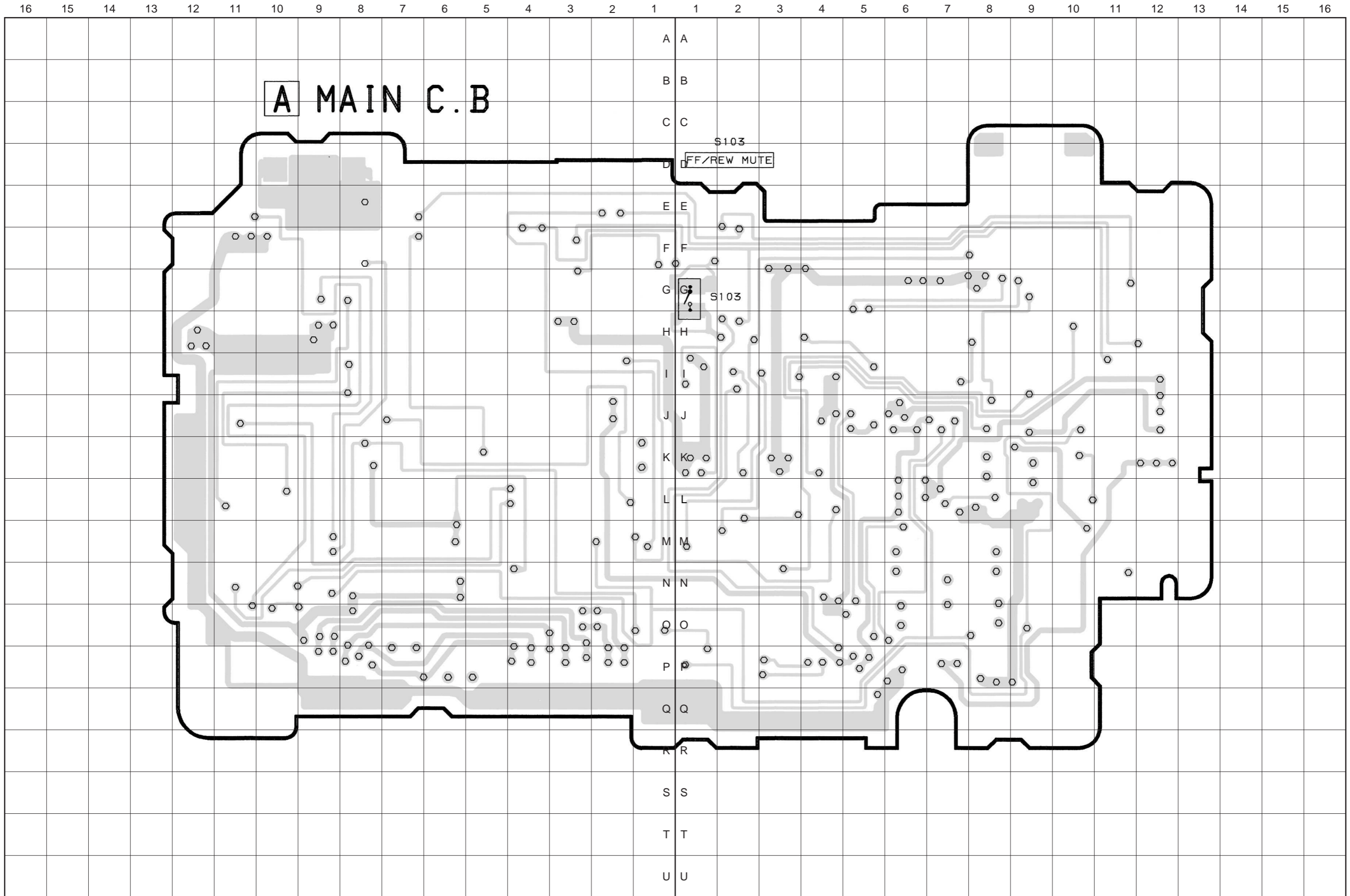


2SJ106Y
2SK880Y

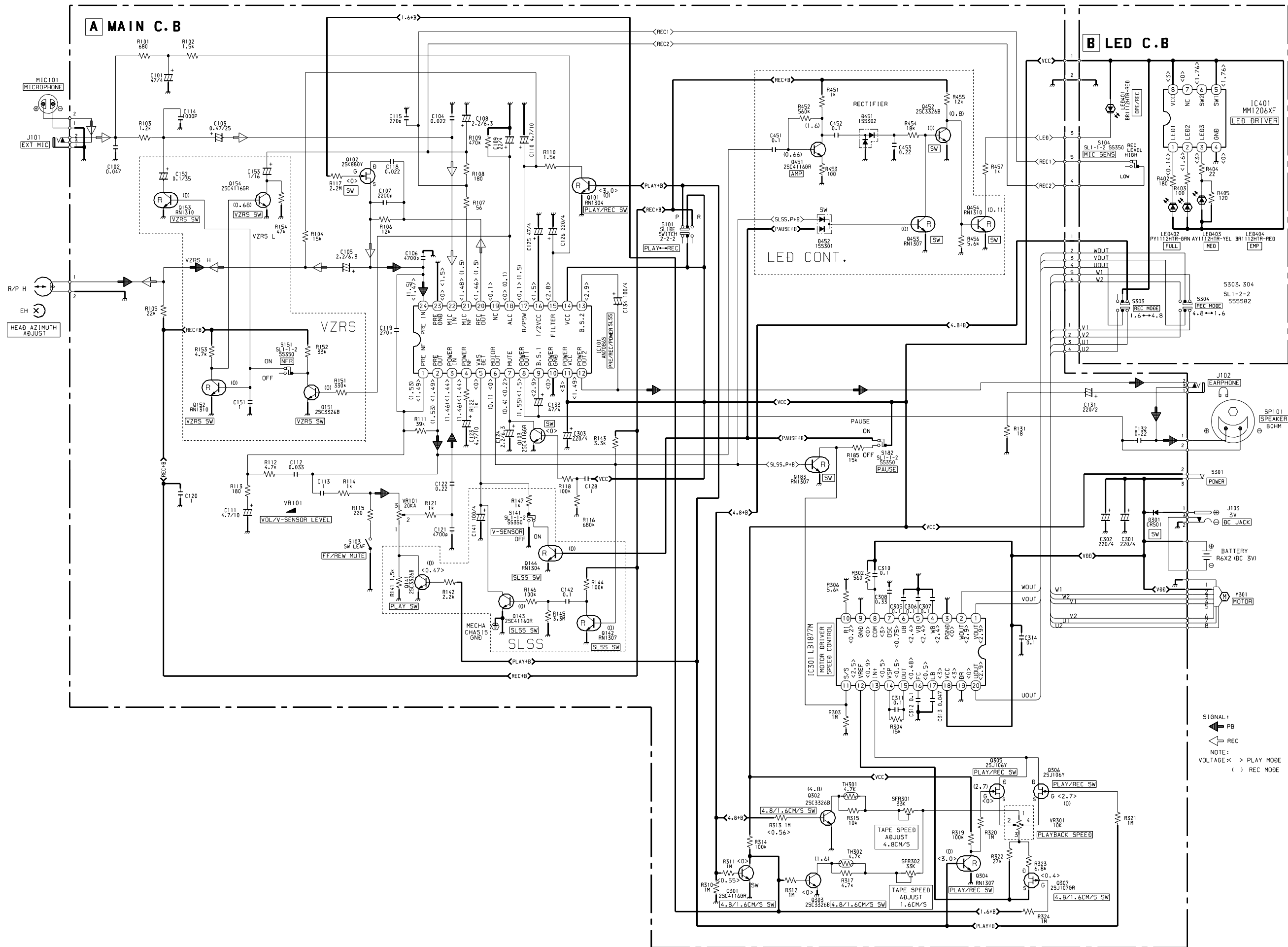


D G S
2SJ107GR



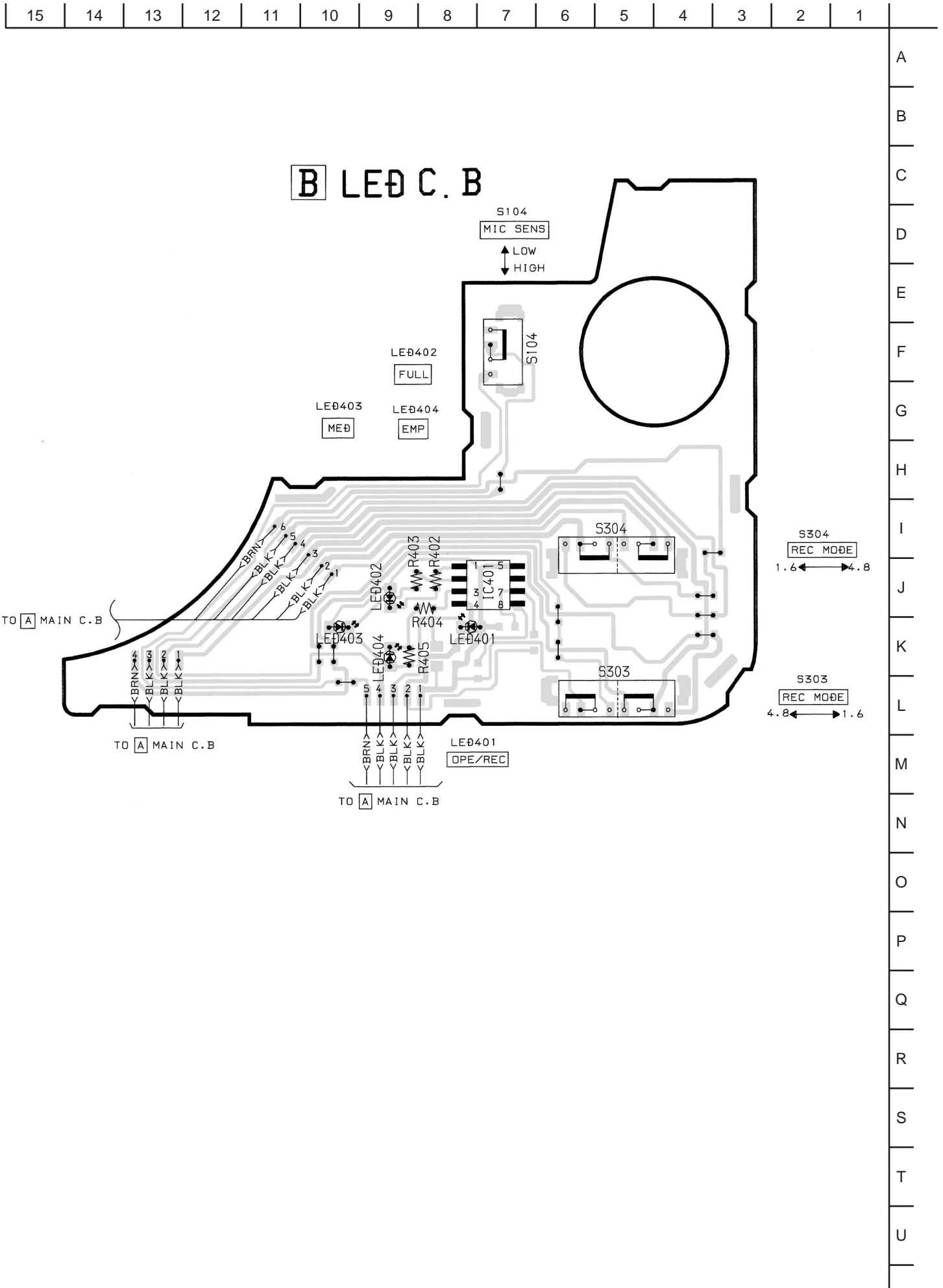


SCHEMATIC DIAGRAM (MAIN / LED)



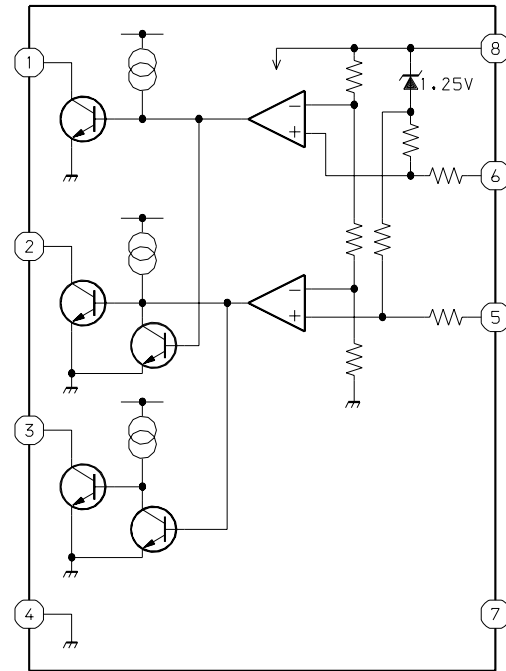
SIGNAL :
 ← PB
 ← REC
 NOTE:
 VOLTAGE < > PLAY MODE
 () REC MODE

WIRING - 2 (LED)

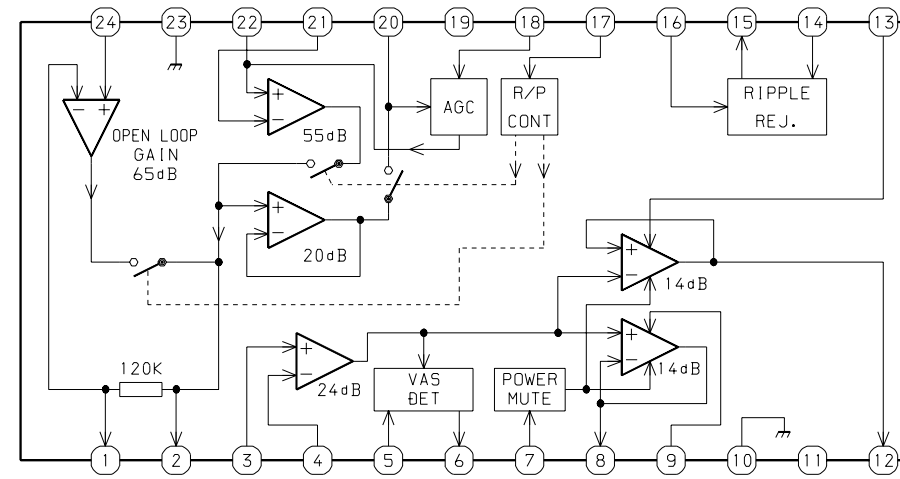


IC BLOCK DIAGRAM

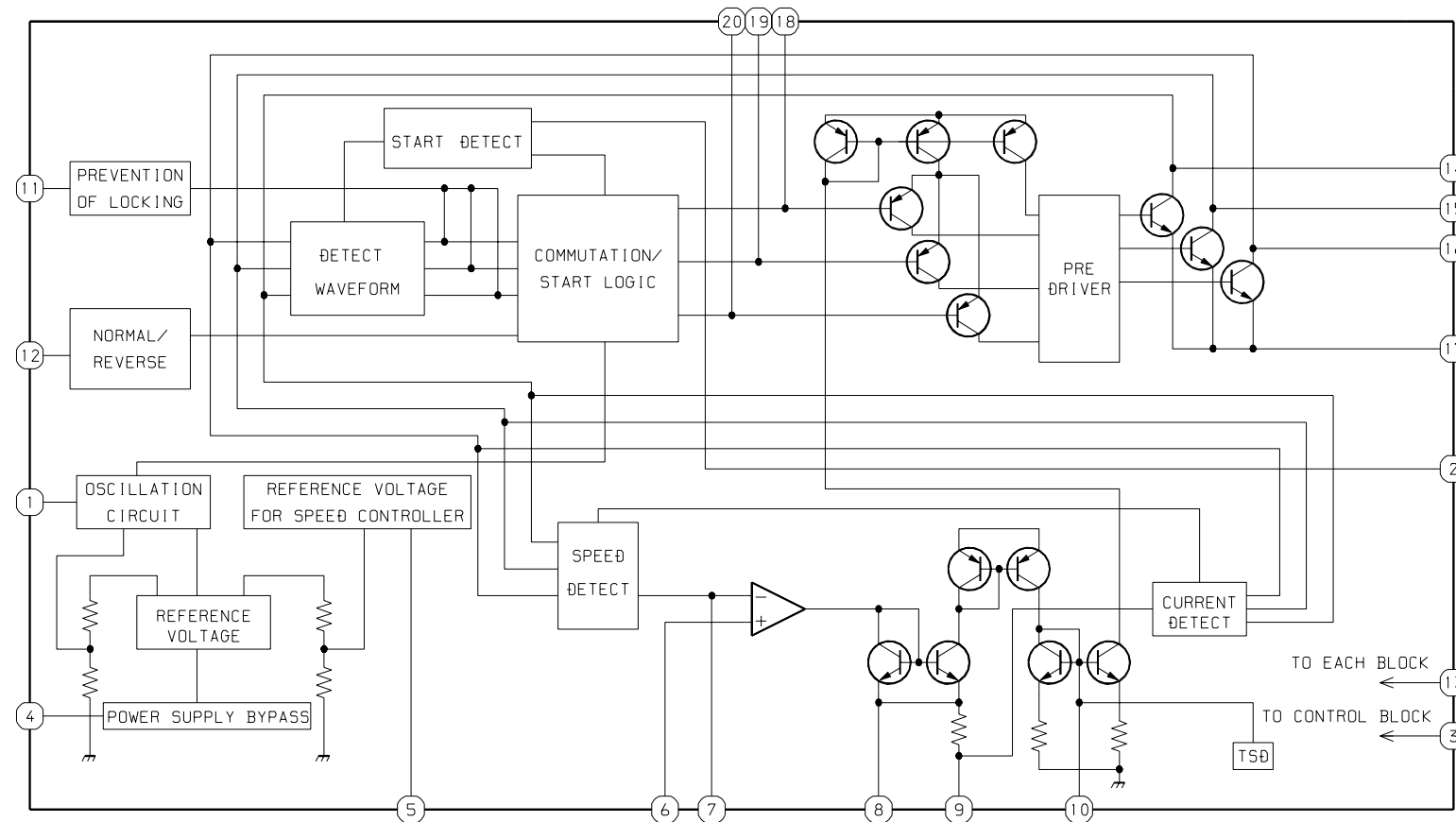
IC, MM1206XF



IC, AN7086S



IC, LB1877M



ADJUSTMENT

1. Tape Speed (4.8 cm/s) Adjustment 1

Settings : • Test tape : TTA - 100 (TAPE CENTER)

- Test point : PHONES JACK (J102)
- Adjustment location : SFR 301
- PAUSE : OFF
- REC MODE SW : NORM (4.8 cm/s)
- VOLUME : Maximum
- TAPE SPEED : Normal (Speed volume center)

Method : Play back the test tape and adjust SFR 301 for 3000 Hz \pm 10 Hz. Then confirm that the WOW is less than 0.5 %.

2. Tape Speed (1.6 cm/s) Adjustment 2

Settings : • Test tape : TTA - 185 (TAPE CENTER)

- Test point : PHONES JACK (J102)
- Adjustment location : SFR 302
- PAUSE : OFF
- REC MODE SW : EXT (1.6 cm/s)
- VOLUME : Maximum
- TAPE SPEED : Normal (Speed volume center)

Method : Play back the test tape and adjust SFR 302 for 3000 Hz \pm 10 Hz. Then confirm that the WOW is less than 1.0 %.

3. Head Azimuth

<Adjustment>

Settings : • Test tape : TTA - 185 (TAPE CENTER)

- Test point : PHONES JACK (J102)
- Adjustment location : Head Azimuth
Adjustment Screw

- PAUSE : OFF
- REC MODE SW : EXT (1.6 cm/s)
- VOLUME : Maximum

Method : Play back the 3 kHz signal of the test tape and adjust screw so that output become maximum.

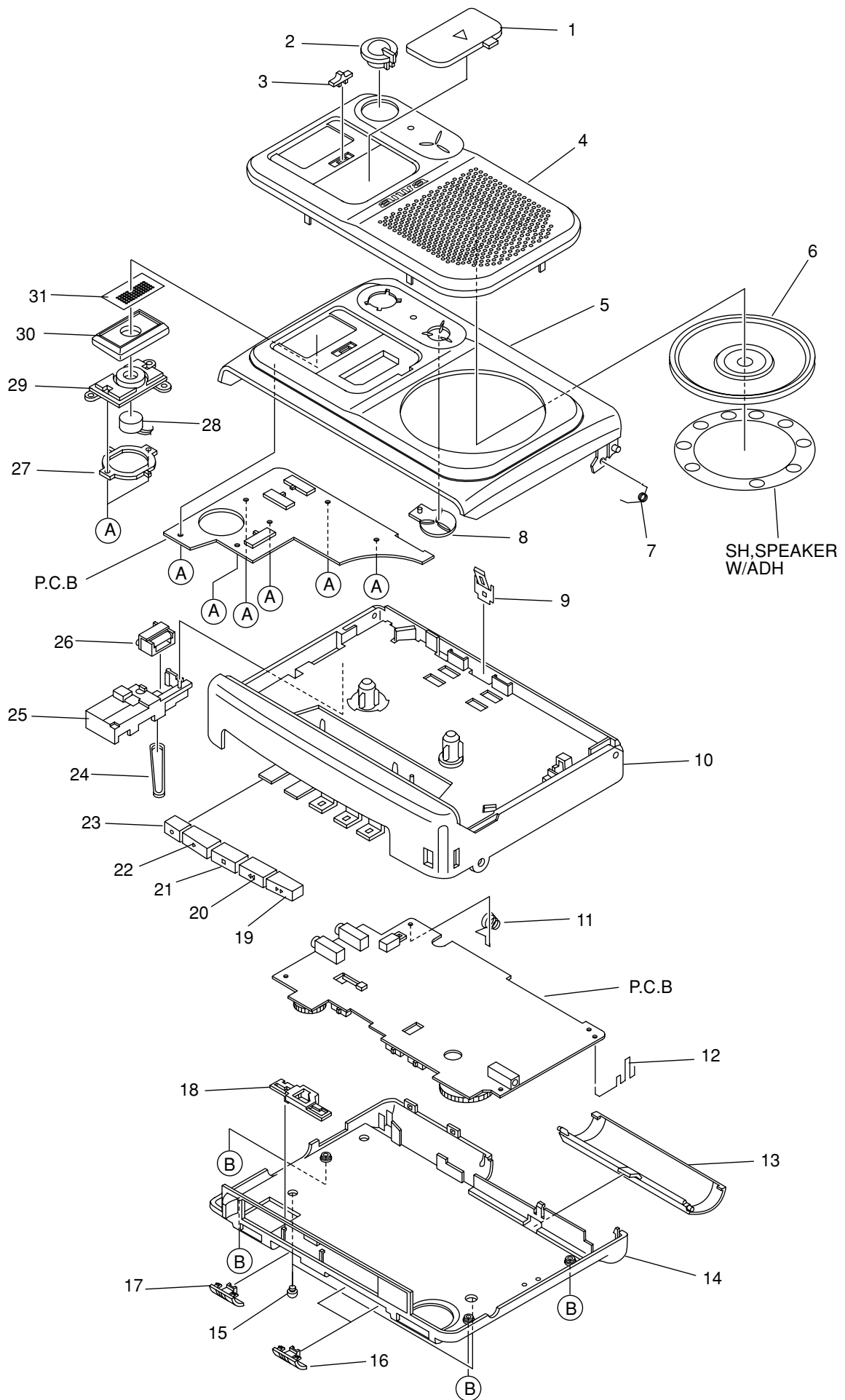
<Check>

Settings : • Test tape : TTA - 330 (315/8 kHz)

- REC MODE SW : NORM (4.8 cm/s)
- VOLUME : Maximum

Method : Play back the 8 kHz signal of the test tape and check that the output is maximum.

MECHANICAL EXPLODED VIEW 1 / 1



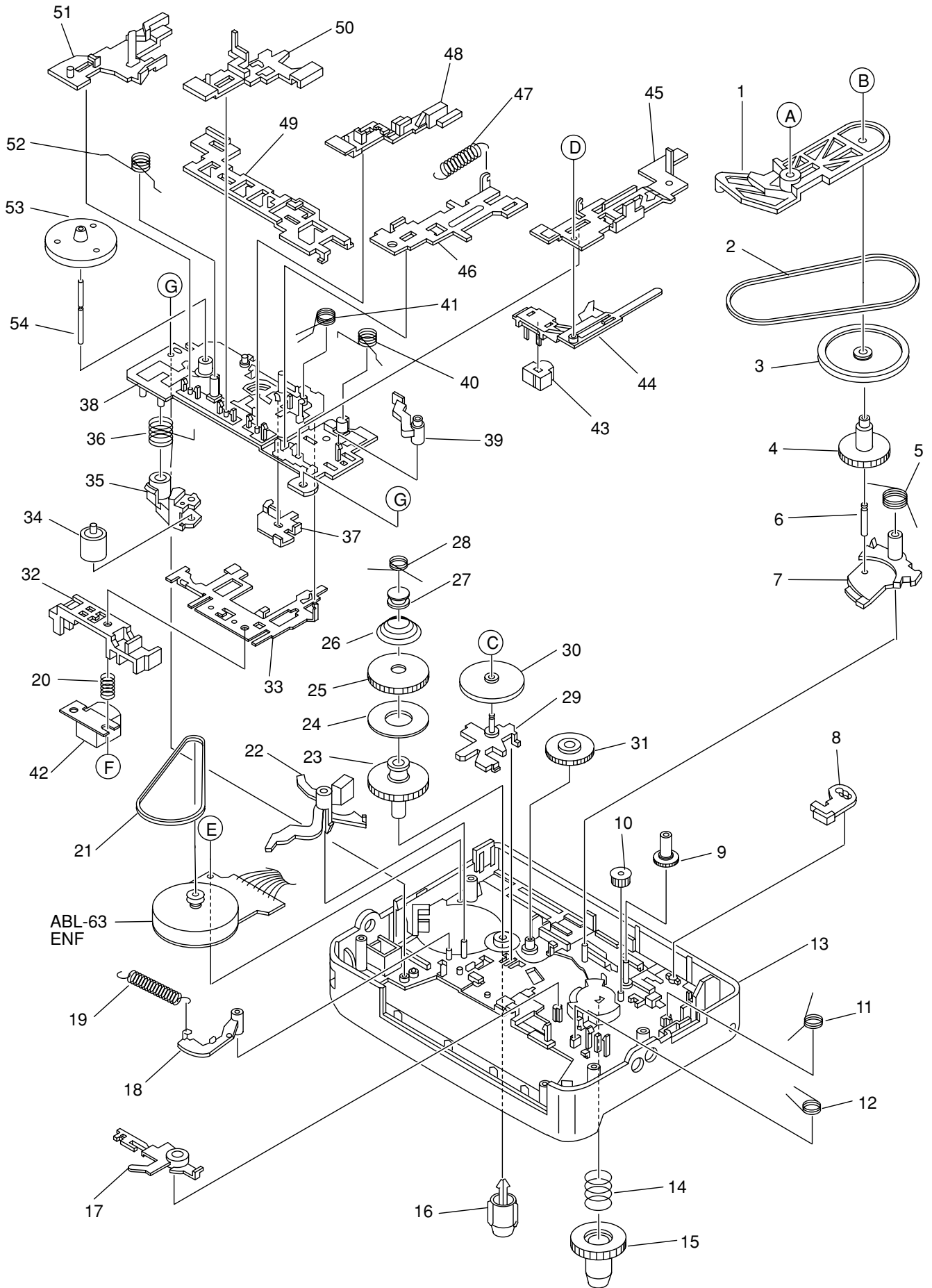
MECHANICAL PARTS LIST 1 / 1

REF. NO.	PART NO.	KANRI NO.	DESCRIPTION	REF. NO.	PART NO.	KANRI NO.	DESCRIPTION
1	8A-HT6-005-010		WINDOW, CASS	21	8A-HT6-016-010		BTN, STOP
2	8A-HT6-010-010		KNOB, SL REC MODE	22	8A-HT6-015-010		BTN, PLAY
3	8A-HT6-011-010		KNOB, SL MIC	23	8A-HT6-014-010		BTN, REC
4	8A-HT6-024-010		PANEL, CASS Y	24	8A-HT6-209-010		BELT, COUNTER
5	8A-HT6-023-010		LID, CASS Y	25	8A-HT6-203-010		HLDR, COUNTER
6	87-A90-568-310		SPKR, DIA 50 8OHM	26	87-HT6-221-010		COUNTER, MU331-001
7	8A-HT6-207-010		SPR-T, CASS	27	8A-HT6-202-010		COVER, PLATE
8	8A-HT6-009-010		LENS, LED	28	84-TM1-639-010		ECM, KUC3523
9	87-HT6-212-010		SPR-P, CASS	29	8A-HT6-201-010		COVER, MIC
10	8A-HT6-021-010		CABI, FRONT Y	30	8A-HT6-006-010		FRAME, MIC
11	8A-HT6-206-010		BAT-CONTACT, (-)	31	8A-HT6-007-010		PLATE, MIC
12	8A-HT6-205-010		BAT-CONTACT, (+)	A	87-078-190-010		S-SCRW, +1.7-3HL B
13	8A-HT6-008-010		LID, BATT	B	87-B10-076-010		VT2+1.7-9 (3) CR
14	8A-HT6-022-010		CABI, REAR Y				
15	8A-HT6-208-010		FOOT, RUBBER				
16	8A-HT6-013-010		KNOB, SL SLSS/VZRS				
17	8A-HT6-012-010		KNOB, SL PAUSE				
18	8A-HT6-204-010		LEVER, PAUSE				
19	8A-HT6-018-010		BTN, FF				
20	8A-HT6-017-010		BTN, REW				

COLOR NAME TABLE

Basic color symbol	Color	Basic color symbol	Color	Basic color symbol	Color
B	Black	C	Cream	D	Orange
G	Green	H	Gray	L	Blue
LT	Transparent Blue	N	Gold	P	Pink
R	Red	S	Silver	ST	Titan Silver
T	Brown	V	Violet	W	White
WT	Transparent White	Y	Yellow	YT	Transparent Yellow
LM	Metallic Blue	LL	Light Blue	GT	Transparent Green
LD	Dark Blue	DT	Transparent Orange	GM	Metallic Green
YM	Metallic Yellow	DM	Metallic Orange	PT	Transparent Pink

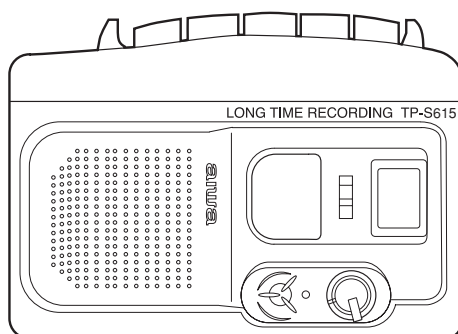
TAPE MECHANISM EXPLODED VIEW 1 / 1



TAPE MECHANISM PARTS LIST 1 / 1

REF. NO.	PART NO.	KANRI NO.	DESCRIPTION	REF. NO.	PART NO.	KANRI NO.	DESCRIPTION
1	8Z-ZM6-214-010		LEVER, CONTROL	36	8Z-ZM6-239-010		SPR-T, PINCH
2	8Z-ZM6-247-010		BELT, FF/REW	37	8Z-ZM6-218-010		LEVER, MS
3	8Z-ZM6-232-010		PULLEY, FF/REW	38	8Z-ZM6-201-010		CHAS ASSY, OUT-SERT
4	8Z-ZM6-224-010		GEAR, FF/REW	39	8Z-ZM6-216-010		LEVER, SW
5	8Z-ZM6-240-010		SPR-T, GR FF/REW	40	8Z-ZM6-233-010		SPR-T, PLAY REC
6	8Z-ZM6-248-010		SHAFT, FF/REW	41	8Z-ZM6-235-010		SPR-T, STOP LOCK
7	8Z-ZM6-215-010		LEVER, FF/REW	42	87-A91-807-010		HEAD, RPH RP-5421
8	8Z-ZM6-217-010		LEVER, REC SEARCH	43	87-A91-819-010		HEAD, EH 2NSS-2200
9	8Z-ZM6-226-010		GEAR, CNT PULLEY	44	8Z-ZM6-222-010		HLDR, EH
10	8Z-ZM6-257-010		GEAR, IDL COUNTER	45	8Z-ZM6-209-010		LEVER, REC
11	8Z-ZM6-237-010		SPR-T, REC SEARCH	46	8Z-ZM6-205-010		LEVER, PLAY
12	8Z-ZM6-236-010		SPR-T, T-UP	47	8Z-ZM6-244-010		SPR-E, HLDR HEAD
13	8A-HT6-001-010		CABI, FRONT	48	8Z-ZM6-208-010		LEVER, STOP
14	87-ZM5-251-010		SPR-C, GEAR REEL	49	8Z-ZM6-211-010		LEVER, LOCK
15	87-ZM5-276-010		GEAR, REEL L	50	8Z-ZM6-207-010		LEVER, REW
16	84-ZM2-216-210		REEL TABLE, R	51	8Z-ZM6-206-010		LEVER, FF
17	8Z-ZM6-210-010		LEVER, T-UP	52	8Z-ZM6-234-010		SPR-T, FF REW
18	8Z-ZM6-213-010		LEVER, AUTO KICK	53	8Z-ZM6-231-010		FLY-WHL, ABL63
19	8Z-ZM6-243-010		SPR-E, AUTO	54	8Z-ZM6-253-010		CAPSTAN, 1.8-23.3 NS
20	8Z-ZM6-241-010		SPR-C, AZIMUTH	A	8Z-ZM6-254-010		W-P, 2.2-4.5-0.25 SLIT
21	8Z-ZM6-246-010		BELT, MOT	B	87-067-693-010		PW, 3-0.8-0.25 SLT
22	8Z-ZM6-212-010		LEVER, AUTO FIND	C	8Z-ZM6-255-010		W-P, 1.0-2.1-0.25 SLIT
23	8Z-ZM6-223-010		GEAR, SLIP T-UP	D	8Z-ZM6-260-010		S-SCREW, EH
24	8Z-ZM6-249-010		FELT, SLIP	E	87-067-732-010		TAPPING SCREW, VT1.4-3
25	8Z-ZM6-227-010		CLR, SLIP T-UP	F	8Z-ZM6-250-010		S-SCREW, AZIMUTH
26	8Z-ZM6-242-010		SPR-C, SLIP	G	8Z-ZM6-251-010		S-SCREW, CHAS
27	8Z-ZM6-230-010		CAP, AUTO				
28	8Z-ZM6-238-010		SPR-T, AUTO				
29	8Z-ZM6-220-010		HLDR, CAM				
30	8Z-ZM6-229-010		CLR ASSY, CAM				
31	8Z-ZM6-225-010		GEAR, IDL FF				
32	8Z-ZM6-221-010		HLDR, GUIDE TAPE				
33	8Z-ZM6-219-010		PLATE, HEAD				
34	88-ZM3-271-010		ROLLER ASSY, PINCH				
35	88-ZM3-218-010		ARM, PINCH R				

アイワ株式会社 〒110-8710 東京都台東区池之端1-2-11 ☎03(3827)3111 (代表)
AIWA CO.,LTD. 2-11, IKENOHATA 1-CHOME, TAITO-KU, TOKYO 110, JAPAN TEL:03 (3827) 3111



SERVICE MANUAL

CASSETTE RECORDER

BASIC TAPE MECHANISM : ZZM-6 R1NF

- This Service Manual contains information about the difference between TP-VS615(YU) and TP-VS615(Y).
If requiring other information, see Service Manual of TP-VS615(YH,Y,YJ,YL), (S/M Code No. 09-007-435-2R2).

SPECIFICATIONS

Track system: 2 tracks 1 channel, monaural
Frequency response: 250-8000 Hz (4.8 cm/sec) EIAJ
Microphone: Electret condenser microphone (monaural)
Maximum output: 300 mW (EIAJ/DC)
Input jack: EXT MIC jack (monaural mini-jack) (1)
Output jack: EARPHONE jack (monaural mini-jack) (1)
Other jack: DC 3 V jack
Speaker: Diameter 50 mm, 8 ohms
Recording system: DC bias
Erasing system: Magnet erasure
Recording speed: Approx. 4.8 cm/sec. with the REC MODE switch set to NORMAL
 Approx. 1.6 cm/sec. with the REC MODE switch set to 3 x
Power sources: DC 3V using two R6 (size AA) dry cell batteries
 AC house current using the AC adaptor (Aiwa AC-D302)
Battery life:

Battery	EIAJ Recording	EIAJ 10 mW
Manganese batteries (R6P)	Approx. 5 hours	Approx. 4 hours
Alkaline batteries (LR6)	Approx. 19 hours	Approx. 13.5 hours

Maximum outside dimensions : 84.3 (W) x 111.7 (H) x 33.4 (D) mm (excluding projecting parts and controls)
Weight: Approx. 156.4 g (excluding batteries)

• Design and specifications are subject to change without notice.

ACCESSORIES / PACKAGE LIST

REF.NO.	PART NO.	KANRI NO.	DESCRIPTION
1	8A-HT6-901-010	IB, YU (3L) S	
2	87-PD3-050-010	STRAP, HAND	

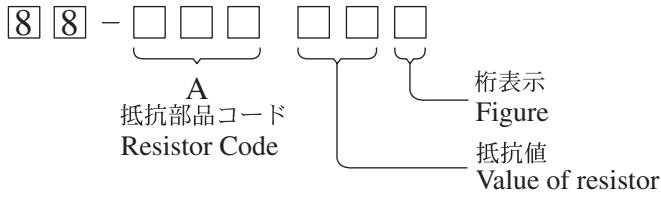
ELECTRICAL MAIN PARTS LIST

REF. NO.	PART NO.	KANRI NO.	DESCRIPTION	REF. NO.	PART NO.	KANRI NO.	DESCRIPTION
IC				C314	87-A12-317-080		C-CAP,U 0.1-50 Z F
	87-A21-657-080	C-IC,AN7086S		C451	87-A12-317-080		C-CAP,U 0.1-50 Z F
	87-A21-224-040	C-IC,LB1877M		C452	87-A12-317-080		C-CAP,U 0.1-50 Z F
	87-017-643-080	IC,MM1206XF		C453	87-016-396-080		C-CAP,U 0.22-16F
TRANSISTOR				J101	87-A61-294-010		JACK,3.5 MONO W/SW
	87-026-411-080	C-TR RN1304		J102	87-A61-294-010		JACK,3.5 MONO W/SW
	89-508-804-080	CHIP FET 2SK880Y		J103	87-A61-124-010		JACK,DC DIA2.75 BLK TC
	89-341-165-080	CHIP TRANSISTOR 2SC4116GR		MIC101	87-A91-891-010		MIC,ECM OBO-54LN-OB
	89-327-125-080	CHIP TR,2SC2712GR		S101	87-036-082-010		SLIDE SWITCH, 2-2-2
	87-026-414-080	C-TR RN1307		S103	87-A90-423-010		SW,LEAF
	87-026-417-080	C-TR,RN1310		S141	87-036-379-280		C-SW,SL1-1-2 SS350
	87-A30-184-070	C-FET,2SJ106Y		S151	87-036-379-280		C-SW,SL1-1-2 SS350
	87-A30-179-010	FET,2SJ107GR		S182	87-036-379-280		C-SW,SL1-1-2 SS350
DIODE				S301	87-A90-423-010		SW,LEAF
	87-A40-822-040	C-DIODE,CRS01		SFR301	87-A91-653-040		C-SFR,K 33K H RH03AEC
	87-001-167-080	DIODE,1SS302 (100MA)		SFR302	87-A91-653-040		C-SFR,K 33K H RH03AEC
	87-001-166-080	DIODE,1SS301		SP101	87-A91-881-010		SPKR,50 8OHM
MAIN C.B				TH301	87-A90-542-080		C-THMS,NTH5G2M35A472K04TE
C101	87-010-501-040	E/CAP GAS 47-4		TH302	87-A90-542-080		C-THMS,NTH5G2M35A472K04TE
C102	87-A10-504-080	C-CAP,U 0.047-16 K B		VR101	87-024-654-010		VR,20KA DIA 14
C103	87-010-504-080	C-CAP TN 0.47-25		VR301	87-A91-822-010		VR,RTRY 10KB H XV081PH1NCC-305
C104	87-010-787-080	CAP, U 0.022-25		LED C.B			
C105	87-016-317-080	C-CAP,TN 2.2-6.3		LED401	87-A91-355-040		C-LED,BR1112H-TR-RED
C106	87-012-282-080	CAP, U 4700P-50		LED402	87-A91-357-040		C-LED,PY1112H-TR-GRN
C107	87-012-278-080	C-CAP,U2200P-50		LED403	87-A91-356-040		C-LED,AY1112H-TR-YEL
C108	87-016-317-080	C-CAP,TN 2.2-6.3		LED404	87-A91-355-040		C-LED,BR1112H-TR-RED
C109	87-A10-952-080	C-CAP,TN 22-4 M A MCM		S104	87-036-379-280		C-SW,SL1-1-2 SS350
C110	87-016-562-080	C-CAP,TN 4.7-10 SV A		S303	87-A90-968-080		C-SW,SL 1-2-2 SSSS82
C111	87-016-562-080	C-CAP,TN 4.7-10 SV A		S304	87-A90-968-080		C-SW,SL 1-2-2 SSSS82
C112	87-010-788-080	C-CAP,U 0.033-2.5F		MAIN C.B			
C113	87-A10-262-080	C-CAP,U 1-10 ZF		C101	87-010-501-040		E/CAP GAS 47-4
C114	87-012-274-080	CHIP CAP,U 1000P-50B		C102	87-A10-504-080		C-CAP,U 0.047-16 K B
C115	87-012-267-080	C-CAP,U 270P-50 B		C103	87-010-504-080		C-CAP TN 0.47-25
C118	87-010-787-080	CAP, U 0.022-25		C104	87-010-787-080		CAP, U 0.022-25
C119	87-012-267-080	C-CAP,U 270P-50 B		C105	87-016-317-080		C-CAP,TN 2.2-6.3
C120	87-A10-262-080	C-CAP,U 1-10 ZF		C106	87-012-282-080		CAP, U 4700P-50
C121	87-012-282-080	CAP, U 4700P-50		C107	87-012-278-080		C-CAP,U2200P-50
C122	87-016-396-080	C-CAP,U 0.22-16F		C108	87-016-317-080		C-CAP,TN 2.2-6.3
C123	87-016-562-080	C-CAP,TN 4.7-10 SV A		C109	87-A10-952-080		C-CAP,TN 22-4 M A MCM
C124	87-016-317-080	C-CAP,TN 2.2-6.3		C110	87-016-562-080		C-CAP,TN 4.7-10 SV A
C125	87-010-820-040	CAP,E 47-4		C111	87-016-562-080		C-CAP,TN 4.7-10 SV A
C126	87-010-503-040	CAP,E 220-4 GAS		C112	87-010-788-080		C-CAP,U 0.033-2.5F
C128	87-A10-262-080	C-CAP,U 1-10 ZF		C113	87-A10-262-080		C-CAP,U 1-10 ZF
C131	87-010-824-040	CAP,E 220-2		C114	87-012-274-080		CHIP CAP,U 1000P-50B
C132	87-016-396-080	C-CAP,U 0.22-16F		C115	87-012-267-080		C-CAP,U 270P-50 B
C133	87-010-501-040	E/CAP GAS 47-4		C118	87-010-787-080		CAP, U 0.022-25
C134	87-010-502-040	CAP ELECT GAS 100/4		C119	87-012-267-080		C-CAP,U 270P-50 B
C141	87-010-821-040	CAP,E 100-4 (MJ)		C120	87-A10-262-080		C-CAP,U 1-10 ZF
C142	87-A12-317-080	C-CAP,U 0.1-50 Z F		C121	87-012-282-080		CAP, U 4700P-50
C151	87-A10-262-080	C-CAP,U 1-10 ZF		C122	87-016-396-080		C-CAP,U 0.22-16F
C152	87-015-922-080	C-CAP,TN 0.1-35		C123	87-016-562-080		C-CAP,TN 4.7-10 SV A
C153	87-010-505-080	C-CAP TN 1-16		C124	87-016-317-080		C-CAP,TN 2.2-6.3
C301	87-010-822-040	CAP,E 220-4 (MJ)		C125	87-010-820-040		CAP,E 47-4
C302	87-010-822-040	CAP,E 220-4 (MJ)		C126	87-010-503-040		CAP,E 220-4 GAS
C303	87-010-822-040	CAP,E 220-4 (MJ)		C128	87-A10-262-080		C-CAP,U 1-10 ZF
C305	87-A10-260-080	C-CAP,U 0.1-16 K B		C131	87-010-824-040		CAP,E 220-2
C306	87-A10-260-080	C-CAP,U 0.1-16 K B		C132	87-016-396-080		C-CAP,U 0.22-16F
C307	87-A10-260-080	C-CAP,U 0.1-16 K B		C133	87-010-501-040		E/CAP GAS 47-4
C308	87-A10-828-080	C-CAP,U 0.33-6.3 K B		C134	87-010-502-040		CAP ELECT GAS 100/4
C310	87-A10-260-080	C-CAP,U 0.1-16 K B		C141	87-010-821-040		CAP,E 100-4 (MJ)
C311	87-A12-317-080	C-CAP,U 0.1-50 Z F		C142	87-A12-317-080		C-CAP,U 0.1-50 Z F
C312	87-A10-260-080	C-CAP,U 0.1-16 K B		C151	87-A10-262-080		C-CAP,U 1-10 ZF
C313	87-A10-504-080	C-CAP,U 0.047-16 K B		C152	87-015-922-080		C-CAP,TN 0.1-35

チップ抵抗部品コード／CHIP RESISTOR PART CODE

チップ抵抗部品コードの成り立ち

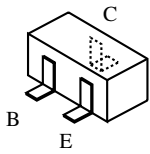
Chip Resistor Part Coding



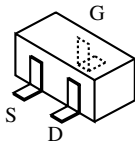
チップ抵抗
Chip resistor

容量 Wattage	種類 Type	許容誤差 Tolerance	記号 Symbol	寸法/Dimensions (mm)			抵抗コード : A Resistor Code : A	
				外形/Form	L	W		t
1/16W	1005	± 5%	CJ		1.0	0.5	0.35	104
1/16W	1608	± 5%	CJ		1.6	0.8	0.45	108
1/10W	2125	± 5%	CJ		2	1.25	0.45	118
1/8W	3216	± 5%	CJ		3.2	1.6	0.55	128

TRANSISTOR ILLUSTRATION



RN1304
RN1307
RN1310
2SC2712GR
2SC4116GR



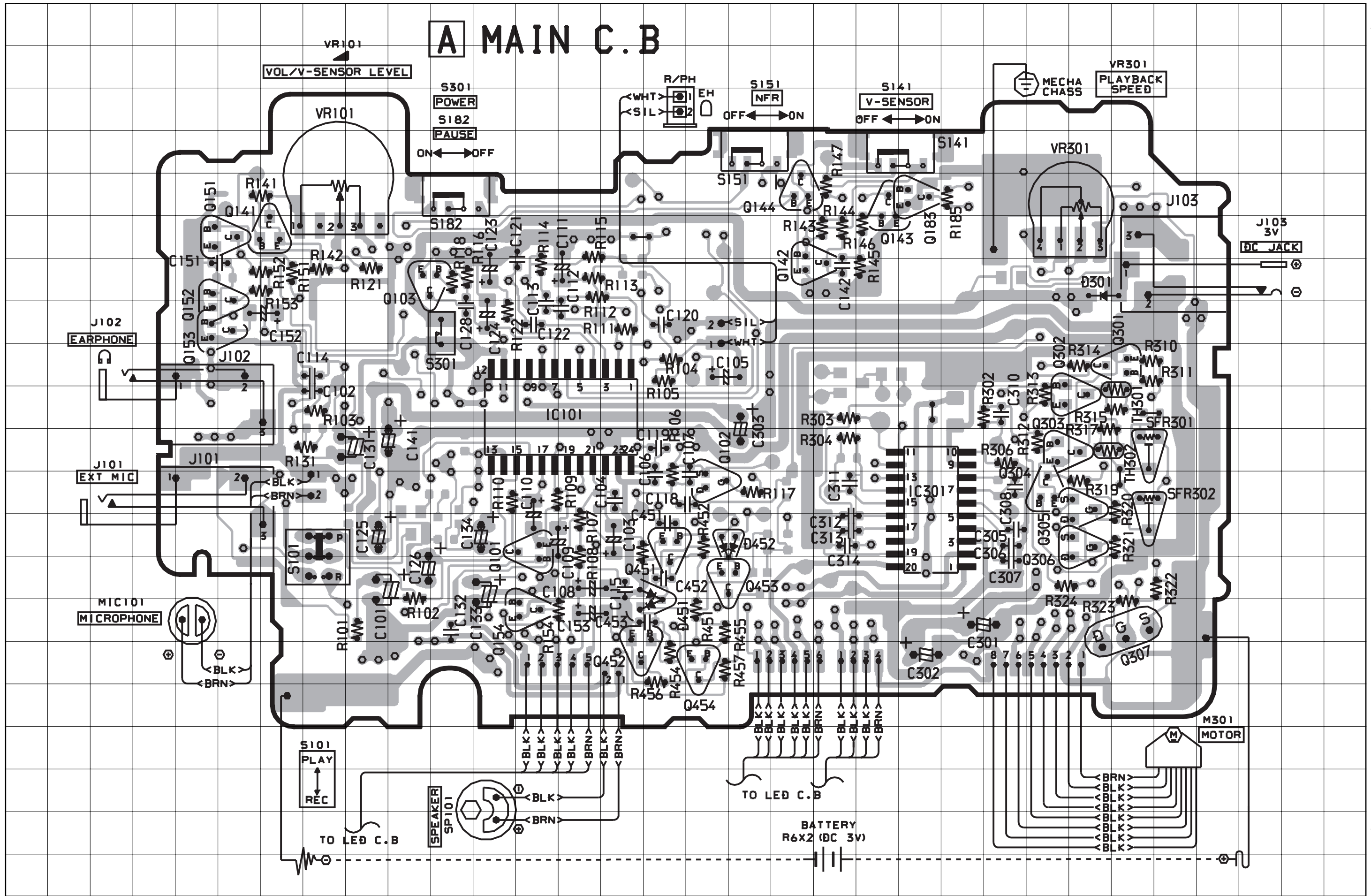
2SJ106Y
2SK880Y

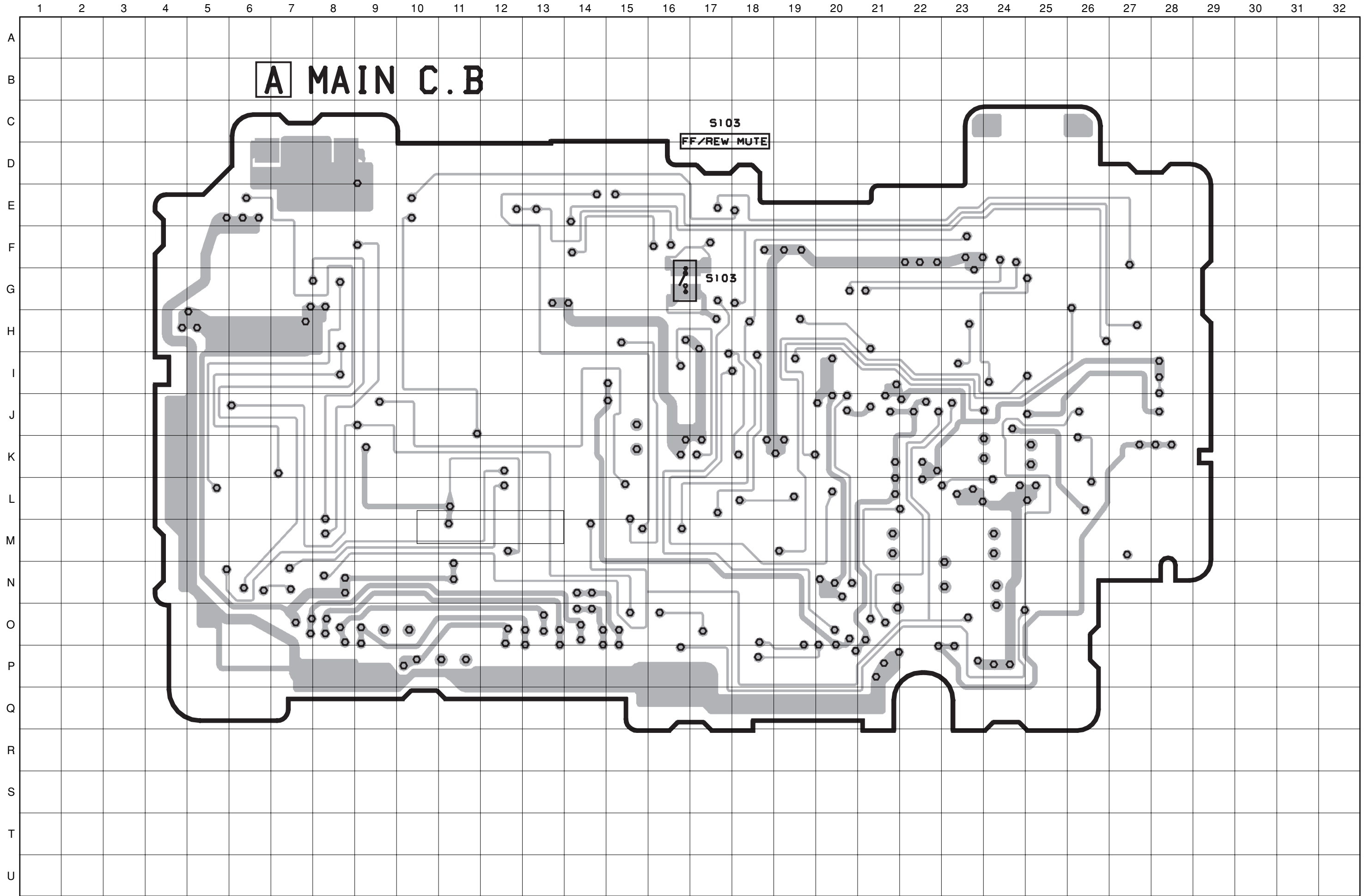


D G S
2SJ107GR

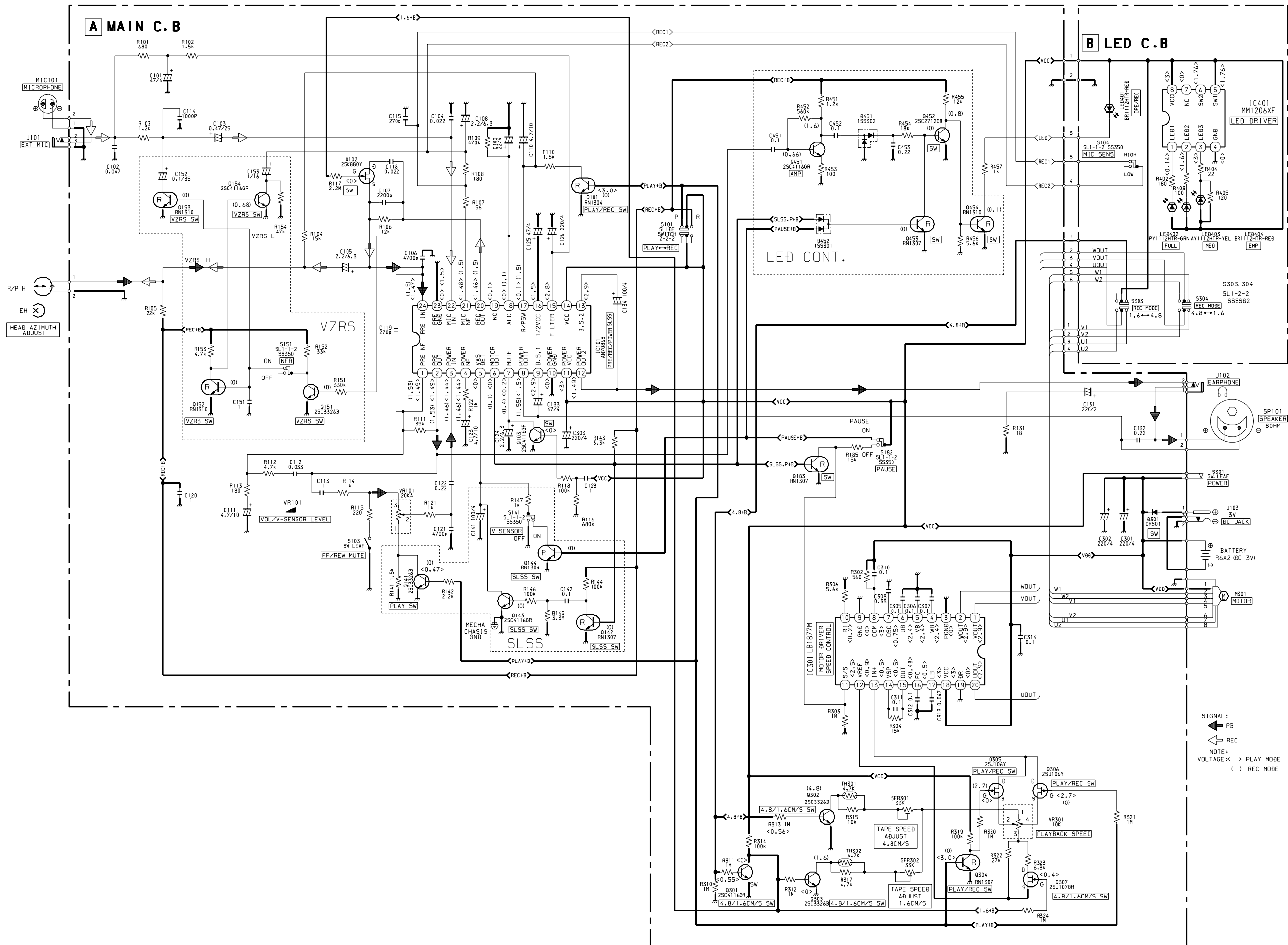
32 31 30 29 28 27 26 25 24 23 22 21 20 19 18 17 16 15 14 13 12 11 10 9 8 7 6 5 4 3 2 1

A MAIN C.B

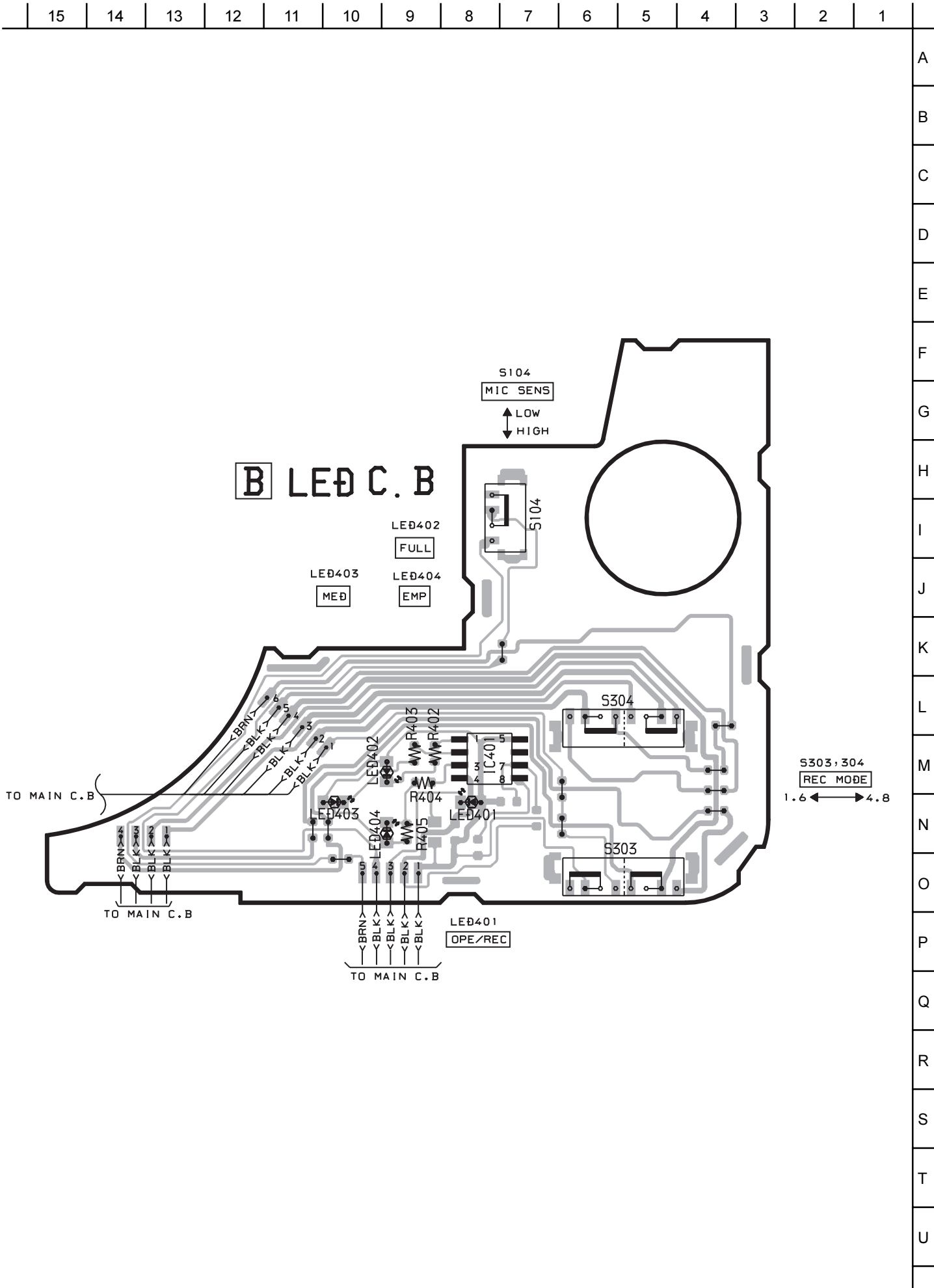




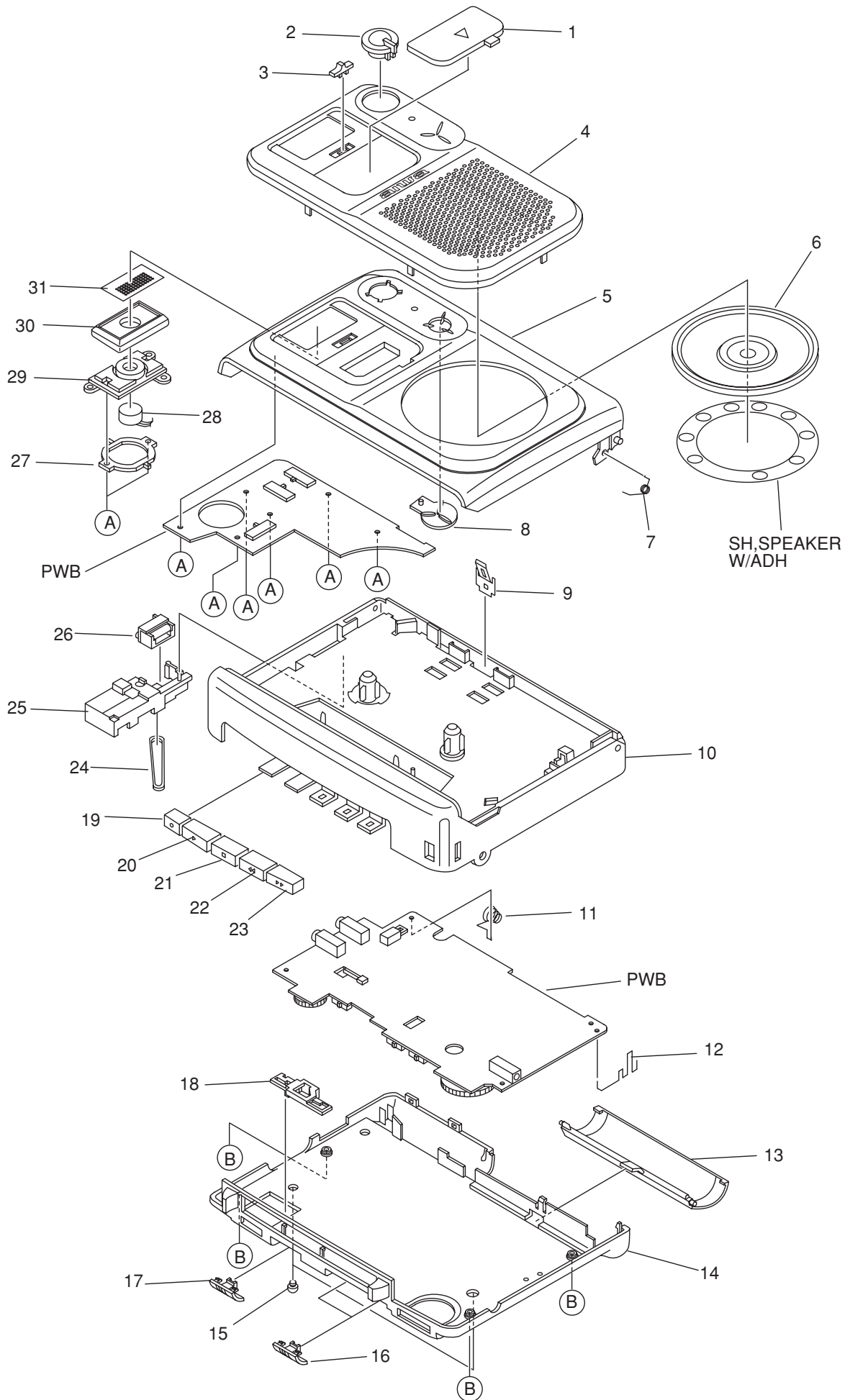
SCHEMATIC DIAGRAM (MAIN/LED)



WIRING - 2 (LED)



MECHANICAL EXPLODED VIEW 1 / 1



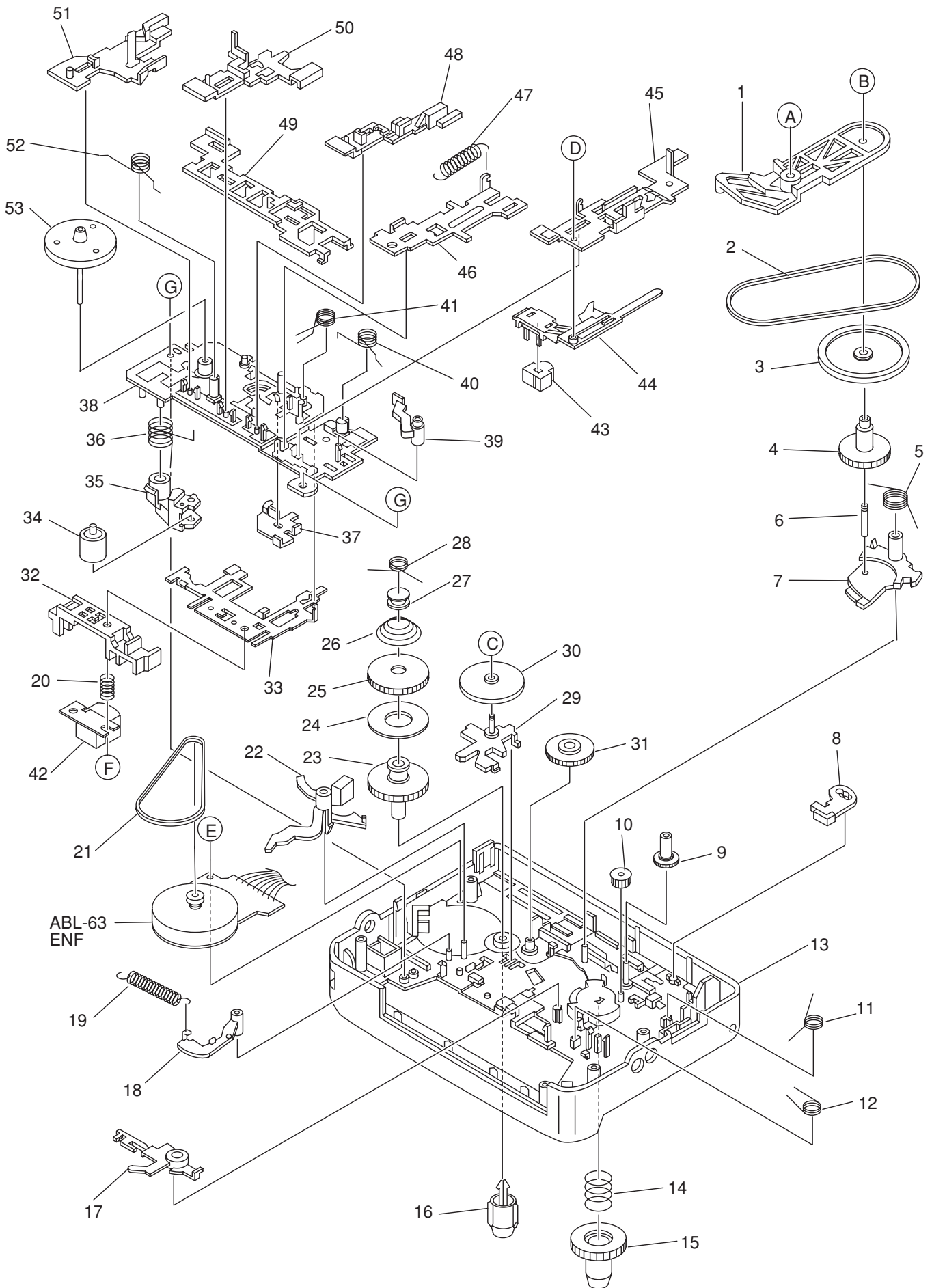
MECHANICAL PARTS LIST 1 / 1

REF. NO.	PART NO.	KANRI NO.	DESCRIPTION	REF. NO.	PART NO.	KANRI NO.	DESCRIPTION
1	8A-HT6-005-010		WINDOW,CASS	21	8A-HT6-016-010		BTN,STOP
2	8A-HT6-010-010		KNOB,SL REC MODE	22	8A-HT6-017-010		BTN,REW
3	8A-HT6-011-010		KNOB,SL MIC	23	8A-HT6-018-010		BTN,FF
4	8A-HT6-029-010		PANEL,CASS Y NW	24	8A-HT6-209-010		BELT,COUNTER
5	8A-HT6-023-010		LID,CASS Y	25	8A-HT6-203-010		HLDR,COUNTER
6	87-A91-881-010		SPKR,50 8OHM 0.6W GENTOSPM2000	26	87-HT6-221-110		COUNTER,MU331-001
7	8A-HT6-207-010		SPR-T,CASS	27	8A-HT6-202-010		COVER, PLATE
8	8A-HT6-009-010		LENS,LED	28	87-A91-891-010		MIC,ECM OBO-54LN-0B
9	8A-HT6-214-010		SPR-P,CASS	29	8A-HT6-201-010		COVER, MIC
10	8A-HT6-021-210		CABI,FRONT Y	30	8A-HT6-006-010		FRAME, MIC
11	8A-HT6-206-010		BAT-CONTACT, (-)	31	8A-HT6-030-010		PLATE, MIC NW
12	8A-HT6-205-010		BAT-CONTACT, (+)	A	87-078-190-010		S-SCRW,+1.7-3HL B
13	8A-HT9-010-110		LID,BATT	B	87-B10-076-010		VT2+1.7-9 (3) CR
14	8A-HT6-022-210		CABI,REAR Y				
15	8A-HT6-208-110		FOOT,RUBBER				
16	8A-HT9-004-010		KNOB,SL SLSS				
17	8A-HT9-005-010		KNOB,SL PAUSE				
18	8A-HT6-204-010		LEVER,PAUSE				
19	8A-HT6-014-010		BTN,REC				
20	8A-HT6-015-010		BTN,PLAY				

COLOR NAME TABLE

Basic color symbol	Color	Basic color symbol	Color	Basic color symbol	Color
B	Black	C	Cream	D	Orange
G	Green	H	Gray	L	Blue
LT	Transparent Blue	N	Gold	P	Pink
R	Red	S	Silver	ST	Titan Silver
T	Brown	V	Violet	W	White
WT	Transparent White	Y	Yellow	YT	Transparent Yellow
LM	Metallic Blue	LL	Light Blue	GT	Transparent Green
LD	Dark Blue	DT	Transparent Orange	GM	Metallic Green
YM	Metallic Yellow	DM	Metallic Orange	PT	Transparent Pink
LA	Aqua Blue	GL	Light Green		

TAPE MECHANISM EXPLODED VIEW 1 / 1



TAPE MECHANISM PARTS LIST 1 / 1

REF. NO.	PART NO.	KANRI NO.	DESCRIPTION	REF. NO.	PART NO.	KANRI NO.	DESCRIPTION
1	8Z-ZM6-214-010		LEVER, CONTROL	31	8Z-ZM6-225-010		GEAR, IDL FF
2	8Z-ZM6-247-010		BELT, FF/REW	32	8Z-ZM6-221-010		HLDR, GUIDE TAPE
3	8Z-ZM6-232-010		PULLEY, FF/REW	33	8Z-ZM6-219-010		PLATE, HEAD
4	8Z-ZM6-224-010		GEAR, FF/REW	34	88-ZM3-271-010		ROLLER ASSY, PINCH
5	8Z-ZM6-240-010		SPR-T, GR FF/REW	35	88-ZM3-218-010		ARM, PINCH R
6	8Z-ZM6-248-010		SHAFT, FF/REW	36	8Z-ZM6-239-010		SPR-T, PINCH
7	8Z-ZM6-215-010		LEVER, FF/REW	37	8Z-ZM6-218-010		LEVER, MS
8	8Z-ZM6-217-010		LEVER, REC SEARCH	38	8Z-ZM6-201-010		CHAS ASSY, OUT-SERT
9	8Z-ZM6-226-010		GEAR, CNT PULLEY	39	8Z-ZM6-216-010		LEVER, SW
10	8Z-ZM6-257-010		GEAR, IDL COUNTER	40	8Z-ZM6-233-010		SPR-T, PLAY REC
11	8Z-ZM6-237-010		SPR-T, REC SEARCH	41	8Z-ZM6-235-010		SPR-T, STOP LOCK
12	8Z-ZM6-236-010		SPR-T, T-UP	42	87-A91-807-010		HEAD, RPH RP-5421
13	8A-HT6-001-010		CABI, FRONT	43	87-A91-819-010		HEAD, EH 2NSS-2200
14	87-ZM5-251-010		SPR-C, GEAR REEL	44	8Z-ZM6-222-010		HLDR, EH
15	87-ZM5-276-010		GEAR, REEL L	45	8Z-ZM6-209-010		LEVER, REC
16	84-ZM2-216-210		REEL TABLE, R	46	8Z-ZM6-205-010		LEVER, PLAY
17	8Z-ZM6-210-010		LEVER, T-UP	47	8Z-ZM6-244-010		SPR-E, HLDR HEAD
18	8Z-ZM6-213-010		LEVER, AUTO KICK	48	8Z-ZM6-208-010		LEVER, STOP
19	8Z-ZM6-243-010		SPR-E, AUTO	49	8Z-ZM6-211-010		LEVER, LOCK
20	8Z-ZM6-241-010		SPR-C, AZIMUTH	50	8Z-ZM6-207-010		LEVER, REW
21	8Z-ZM6-246-010		BELT, MOT	51	8Z-ZM6-206-010		LEVER, FF
22	8Z-ZM6-212-010		LEVER, AUTO FIND	52	8Z-ZM6-234-010		SPR-T, FF REW
23	8Z-ZM6-223-010		GEAR, SLIP T-UP	53	8Z-ZM6-271-010		FLY-WHL ASSY, ABL63
24	8Z-ZM6-249-010		FELT, SLIP	A	8Z-ZM6-254-010		W-P, 2.2-4.5-0.25 SLIT
25	8Z-ZM6-227-010		CLR, SLIP T-UP	B	87-067-693-010		PW, 3-0.8-0.25 SLT
26	8Z-ZM6-242-010		SPR-C, SLIP	C	8Z-ZM6-255-010		W-P, 1.0-2.1-0.25 SLIT
27	8Z-ZM6-230-010		CAP, AUTO	D	8Z-ZM6-260-010		S-SCREW, EH
28	8Z-ZM6-238-010		SPR-T, AUTO	E	87-067-732-010		TAPPING SCREW, VT1.4-3
29	8Z-ZM6-220-010		HLDR, CAM	F	8Z-ZM6-250-010		S-SCREW, AZIMUTH
30	8Z-ZM6-229-010		CLR ASSY, CAM	G	8Z-ZM6-251-010		S-SCREW, CHAS

アイワ株式会社 〒110-8710 東京都台東区池之端1-2-11 ☎03(3827)3111 (代表)
AIWA CO.,LTD. 2-11, IKENOHATA 1-CHOME, TAITO-KU, TOKYO 110, JAPAN TEL:03 (3827) 3111