



XR-M98MK2

K

XR-M99MK2

EZ

SERVICE MANUAL

COMPACT DISC
STEREO SYSTEM

BASIC CD MECHANISM: 3ZG-3 E3NC

- Replace this Service manual with "Revision Publishing" when it is issued.

aiwa

S/M Code No. 09-005-415-0T3

SIMPLE

DATA

ELECTRICAL MAIN PARTS LIST - 1/3(MX-LM98/99MK2)

NOTE: The characters in the suffix column indicate the part usage.

REF.NO	PARTS NO.	NO.	DESCRIPTION	SUFFIX
K		XX		A
EZ		XX		B
		KANRI		
C	304	87-010-197-080	CAP, CHIP 0.01 DM	AB
C	306	87-010-197-080	CAP, CHIP 0.01 DM	AB
C	305	87-010-197-080	CAP, CHIP 0.01 DM	AB
C	301	87-010-197-080	CAP, CHIP 0.01 DM	AB
C	302	87-010-197-080	CAP, CHIP 0.01 DM	AB
C	303	87-010-260-080	CAP, ELECT 47-25V	AB
C	363	87-010-197-080	CAP, CHIP 0.01 DM	AB
CN	204	87-A60-131-010	CONN, 6P V FE	AB
CN	304	87-A60-131-010	CONN, 6P V FE	AB
CN	305	87-A60-619-010	CONN, 2P V 2MM JMT	AB
CN	306	87-A60-619-010	CONN, 2P V 2MM JMT	AB
CN	302	88-805-020-790	CONN ASSY, 2P 70MM	AB
CN	301	88-805-020-790	CONN ASSY, 2P 70MM	AB
D	307	87-A40-291-080	DIODE, 1N4148 (CPT)	AB
D	301	87-A40-299-080	ZENER, DZ5.1M	AB
D	302	87-A40-317-080	LED, SLR-342VCT31 RED	AB
D	305	87-A40-640-010	LED, SELU1E10CXM BLUE-EF	AB
D	304	87-A40-640-010	LED, SELU1E10CXM BLUE-EF	AB
D	306	87-A40-640-010	LED, SELU1E10CXM BLUE-EF	AB
D	303	87-A40-640-010	LED, SELU1E10CXM BLUE-EF	AB
JW	119	87-003-098-080	COIL, 2.2UH	AB
Q	302	87-A30-087-080	C-FET, 2SK2158	AB
S	304	87-A90-696-080	SW, TACT TS2103-03-430	AB
S	307	87-A90-696-080	SW, TACT TS2103-03-430	AB
S	309	87-A90-696-080	SW, TACT TS2103-03-430	AB
S	305	87-A90-696-080	SW, TACT TS2103-03-430	AB
S	302	87-A90-696-080	SW, TACT TS2103-03-430	AB
S	303	87-A90-696-080	SW, TACT TS2103-03-430	AB
S	306	87-A90-696-080	SW, TACT TS2103-03-430	AB
S	308	87-A90-696-080	SW, TACT TS2103-03-430	AB
S	301	87-A91-402-010	SW, RTRY RE0121PVB25FINA1-T2	AB
C	104	87-010-387-080	CAP, E 470-25 SME	AB
C	105	87-010-403-080	CAP, ELECT 3.3-50V	AB
C	101	87-A10-479-080	CAP, CER 2200P-250 M E KH	AB
C	404	87-010-387-080	CAP, E 470-25 SME	AB
C	405	87-010-403-080	CAP, ELECT 3.3-50V	AB
C	401	87-A10-479-080	CAP, CER 2200P-250 M E KH	AB
C	402	87-A10-479-080	CAP, CER 2200P-250 M E KH	AB
CN	101	87-A61-024-010	CONN, 4P H BLK TKC-M	AB
CN	404	87-A61-024-010	CONN, 4P H BLK TKC-M	AB
D	106	87-A40-291-080	DIODE, 1N4148 (CPT)	AB
D	103	87-A40-291-080	DIODE, 1N4148 (CPT)	AB
D	102	87-A40-291-080	DIODE, 1N4148 (CPT)	AB
D	104	87-A40-291-080	DIODE, 1N4148 (CPT)	AB
D	101	87-A40-291-080	DIODE, 1N4148 (CPT)	AB
D	107	87-A40-291-080	DIODE, 1N4148 (CPT)	AB
D	105	87-A40-291-080	DIODE, 1N4148 (CPT)	AB
D	404	87-A40-291-080	DIODE, 1N4148 (CPT)	AB
D	403	87-A40-291-080	DIODE, 1N4148 (CPT)	AB
D	405	87-A40-291-080	DIODE, 1N4148 (CPT)	AB
D	401	87-A40-291-080	DIODE, 1N4148 (CPT)	AB
D	407	87-A40-291-080	DIODE, 1N4148 (CPT)	AB
D	402	87-A40-291-080	DIODE, 1N4148 (CPT)	AB
D	406	87-A40-291-080	DIODE, 1N4148 (CPT)	AB
PR	101	87-A91-276-080	FUSE, 125MA 125V F 251	AB
PT	101	8Z-NF8-659-010	PT, SUB ZNF-8 (E) TAM	AB
PT	101	8Z-NF8-660-110	PT, SUB ZNF-8 (D)	AB
PT	101	8Z-NF8-661-010	PT, SUB ZNF-8 (U)	AB
PT	401	8Z-NF8-663-010	PT, SUB ZNF-8 (H)	AB
Q	101	87-026-245-080	TR, DTC114ES	AB
Q	102	87-A30-198-080	TR, KTC3199GR	AB
Q	401	87-026-245-080	TR, DTC114ES	AB
Q	402	87-A30-198-080	TR, KTC3199GR	AB
RY	101	87-A90-976-010	RELAY, AC12V SDT-S-112LMR	AB
RY	401	87-A91-281-010	RELAY, AC DC12V OSA-SS-212DM5	AB
S	401	87-A90-234-010	SW, SL 1-2-2 SW2201	AB
TM	102	87-A60-317-010	TERMINAL, 1P MSC	AB
TM	101	87-A60-317-010	TERMINAL, 1P MSC	AB
TM	401	87-A60-317-010	TERMINAL, 1P MSC	AB
TM	402	87-A60-317-010	TERMINAL, 1P MSC	AB
C	82	87-010-263-080	CAP, ELECT 100-10V	AB
C	84	87-010-378-080	CAP, ELECT 10-16V	AB
C	83	87-010-380-080	CAP, ELECT 47-16V	AB
C	81	87-010-401-080	CAP, ELECT 1-50V	AB
CN	202	87-A60-109-010	CONN, 2P V S2M-2W	AB
D	81	87-A40-291-080	DIODE, 1N4148 (CPT)	AB
D	85	87-A40-291-080	DIODE, 1N4148 (CPT)	AB
D	82	87-A40-291-080	DIODE, 1N4148 (CPT)	AB
Q	82	87-026-609-080	TR, KTA1266GR	AB
Q	83	87-026-609-080	TR, KTA1266GR	AB

ELECTRICAL MAIN PARTS LIST - 2/3(MX-LM98/99MK2)

Q	81	87-A30-076-080	C-TR, 2SC3052F	AB
C	126	87-010-196-080	CHIP CAPACITOR, 0.1-25	AB
C	125	87-010-196-080	CHIP CAPACITOR, 0.1-25	AB
C	128	87-010-196-080	CHIP CAPACITOR, 0.1-25	AB
C	127	87-010-196-080	CHIP CAPACITOR, 0.1-25	AB
C	124	87-010-917-090	CAP, E 3300-50 M SMG	AB
C	129	87-010-928-090	CAP, E 4700-25 SMG	AB
C	123	87-A10-520-090	CAP, E 3300-35 M SMG	AB
C	131	87-010-384-080	CAP, ELECT 100-25V	AB
C	130	87-010-384-080	CAP, ELECT 100-25V	AB
C	153	87-010-196-080	CHIP CAPACITOR, 0.1-25	AB
C	151	87-010-196-080	CHIP CAPACITOR, 0.1-25	AB
C	154	87-A10-105-080	CAP, E 1000-6.3 REA	AB
C	152	87-A11-233-090	CAP, E 4700-16 105 KMG	AB
C	175	87-010-247-080	CAP, ELECT 100-50V	AB
C	176	87-010-247-080	CAP, ELECT 100-50V	AB
C	171	87-010-260-080	CAP, ELECT 47-25V	AB
C	172	87-010-260-080	CAP, ELECT 47-25V	AB
C	173	87-010-260-080	CAP, ELECT 47-25V	AB
C	174	87-010-260-080	CAP, ELECT 47-25V	AB
C	181	87-010-384-080	CAP, ELECT 100-25V	AB
C	182	87-010-384-080	CAP, ELECT 100-25V	AB
CN	103	87-049-469-010	CONN, 4P V	AB
CN	102	87-099-186-010	CONN, 6P EH V WHT	AB
CN	104	87-A61-025-010	CONN, 4P TKC-M4P-B1	AB
D	123	87-070-178-090	DIODE, 1N5402-BD54	AB
D	121	87-070-178-090	DIODE, 1N5402-BD54	AB
D	124	87-070-178-090	DIODE, 1N5402-BD54	AB
D	122	87-070-178-090	DIODE, 1N5402-BD54	AB
D	126	87-070-274-080	DIODE, 1N4003 SEM	AB
D	125	87-070-274-080	DIODE, 1N4003 SEM	AB
D	153	87-017-083-080	ZENER, HZS4C2	AB
D	152	87-070-274-080	DIODE, 1N4003 SEM	AB
D	151	87-070-274-080	DIODE, 1N4003 SEM	AB
D	172	87-070-274-080	DIODE, 1N4003 SEM	AB
D	171	87-070-274-080	DIODE, 1N4003 SEM	AB
D	173	87-070-274-080	DIODE, 1N4003 SEM	AB
D	174	87-070-274-080	DIODE, 1N4003 SEM	AB
D	175	87-A40-312-080	ZENER, DZ33M	AB
IC	122	87-001-642-010	IC, NJM78M12FA	AB
IC	121	87-001-642-010	IC, NJM78M12FA	AB
PR	104	87-026-681-080	PROTECTOR, 5A 60V 491	AB
PR	103	87-026-681-080	PROTECTOR, 5A 60V 491	AB
PR	103	87-026-690-080	FUSE, 5A 125V 251	AB
PR	104	87-026-690-080	FUSE, 5A 125V 251	AB
PR	151	87-A90-093-080	PROTECTOR, 3A 491SERIES 60V	AB
PR	152	87-A90-093-080	PROTECTOR, 3A 491SERIES 60V	AB
PR	151	87-A90-094-080	PROTECTOR, 4A 491SERIES 60V	AB
PR	152	87-A90-094-080	PROTECTOR, 4A 491SERIES 60V	AB
PR	152	87-A90-113-080	PROTECTOR, 4A 251	AB
PR	151	87-A90-113-080	PROTECTOR, 4A 251	AB
Q	126	87-A30-075-080	C-TR, 2SA1235F	AB
Q	153	87-A30-076-080	C-TR, 2SC3052F	AB
Q	152	87-A30-076-080	C-TR, 2SC3052F	AB
Q	151	89-213-702-010	TR, 2SB1370 (1.8W)	AB
Q	172	87-026-609-080	TR, KTA1266GR	AB
Q	171	87-026-609-080	TR, KTA1266GR	AB
R	175	87-A90-247-080	RPOTECTOR, 0.315A 60V 491	AB
R	175	87-A90-393-080	PROTECTOR, 0.5A 491SERISE 60V	AB
C	53	87-010-197-080	CAP, CHIP 0.01 DM	AB
C	51	87-010-260-080	CAP, ELECT 47-25V	AB
C	52	87-010-403-080	CAP, ELECT 3.3-50V	AB
C	208	87-010-546-080	CAP, ELECT 0.33-50V	AB
C	207	87-010-546-080	CAP, ELECT 0.33-50V	AB
C	209	87-012-157-080	C-CAP, S 330P-50 CH	AB
C	213	87-010-186-080	CAP, CHIP 4700P	AB
C	214	87-010-186-080	CAP, CHIP 4700P	AB
C	212	87-010-260-080	CAP, ELECT 47-25V	AB
C	211	87-010-260-080	CAP, ELECT 47-25V	AB
C	216	87-010-405-080	CAP, ELECT 10-50V	AB
C	215	87-010-405-080	CAP, ELECT 10-50V	AB
C	210	87-012-157-080	C-CAP, S 330P-50 CH	AB
C	217	87-A10-946-080	C-CAP, S 220P-100 J CH	AB
C	218	87-A10-946-080	C-CAP, S 220P-100 J CH	AB
C	229	87-010-182-080	C-CAP, S 2200P-50 B	AB
C	221	87-010-186-080	CAP, CHIP 4700P	AB
C	222	87-010-186-080	CAP, CHIP 4700P	AB
C	226	87-010-195-080	C-CAP, S 0.068-25 F	AB
C	225	87-010-195-080	C-CAP, S 0.068-25 F	AB
C	227	87-010-544-080	CAP, ELECT 0.1-50V	AB
C	228	87-010-544-080	CAP, ELECT 0.1-50V	AB
C	224	87-012-368-080	C-CAP, S 0.1-50 F	AB
C	223	87-012-368-080	C-CAP, S 0.1-50 F	AB
C	230	87-010-182-080	C-CAP, S 2200P-50 B	AB
C	231	87-010-189-080	C-CAP, S 8200P-50 B	AB
C	232	87-010-189-080	C-CAP, S 8200P-50 B	AB
C	234	87-010-380-080	CAP, ELECT 47-16V	AB

ELECTRICAL MAIN PARTS LIST - 3/3(MX-LM98/99MK2)

C	235	87-A10-946-080	C-CAP, S 220P-100 J CH	AB.....
C	271	87-010-112-080	CAP, ELECT 100-16V	AB.....
C	270	87-010-380-080	CAP, ELECT 47-16V	AB.....
CN	205	87-009-802-010	CONN, 20P H BLK TKC-M	AB.....
CN	203	87-099-548-010	CONN, 20P TKC-M020P-B	AB.....
CN	206	87-A60-624-010	CONN, 7P V 2MM JMT	AB.....
CN	207	88-805-070-790	CONN ASSY, 7P 70MM	AB.....
D	53	87-A40-004-080	ZENER, MTZJ16A	AB.....
D	52	87-A40-269-080	C-DIODE, MC2836	AB.....
D	51	87-A40-270-080	C-DIODE, MC2838	AB.....
D	54	87-A40-291-080	DIODE, 1N4148 (CPT)	AB.....
D	55	87-A40-291-080	DIODE, 1N4148 (CPT)	AB.....
D	209	87-A40-270-080	C-DIODE, MC2838	AB.....
D	202	87-A40-291-080	DIODE, 1N4148 (CPT)	AB.....
D	207	87-A40-291-080	DIODE, 1N4148 (CPT)	AB.....
D	204	87-A40-291-080	DIODE, 1N4148 (CPT)	AB.....
D	203	87-A40-291-080	DIODE, 1N4148 (CPT)	AB.....
D	208	87-A40-291-080	DIODE, 1N4148 (CPT)	AB.....
D	201	87-A40-291-080	DIODE, 1N4148 (CPT)	AB.....
D	206	87-A40-488-080	DIODE, 1SS244	AB.....
D	205	87-A40-488-080	DIODE, 1SS244	AB.....
D	210	87-A40-291-080	DIODE, 1N4148 (CPT)	AB.....
D	211	87-A40-291-080	DIODE, 1N4148 (CPT)	AB.....
D	212	87-A40-291-080	DIODE, 1N4148 (CPT)	AB.....
J	202	87-099-801-010	JACK, PIN 1P BLK	AB.....
J	201	87-A60-420-010	JACK, 3.5 ST (MSC)	AB.....
J	203	87-A60-659-010	TERMINAL, SPKR 4P HSP-134V-05Z	AB.....
JR	101	87-005-564-080	CHIP-COIL S2.2MH	AB.....
L	204	87-003-098-080	COIL, 2.2UH	AB.....
L	203	87-003-098-080	COIL, 2.2UH	AB.....
L	205	87-003-098-080	COIL, 2.2UH	AB.....
L	201	87-003-383-010	COIL, 1UH-S	AB.....
L	202	87-003-383-010	COIL, 1UH-S	AB.....
Q	58	87-A30-074-080	C-TR, RT1P 141C	AB.....
Q	52	87-A30-075-080	C-TR, 2SA1235F	AB.....
Q	54	87-A30-075-080	C-TR, 2SA1235F	AB.....
Q	51	87-A30-076-080	C-TR, 2SC3052F	AB.....
Q	53	87-A30-076-080	C-TR, 2SC3052F	AB.....
Q	55	87-A30-076-080	C-TR, 2SC3052F	AB.....
Q	56	87-A30-268-040	C-TR, 2SA1514K (S)	AB.....
Q	57	87-A30-268-040	C-TR, 2SA1514K (S)	AB.....
Q	202	87-A30-075-080	C-TR, 2SA1235F	AB.....
Q	201	87-A30-075-080	C-TR, 2SA1235F	AB.....
Q	203	87-A30-075-080	C-TR, 2SA1235F	AB.....
Q	204	87-A30-075-080	C-TR, 2SA1235F	AB.....
Q	206	87-A30-076-080	C-TR, 2SC3052F	AB.....
Q	208	87-A30-076-080	C-TR, 2SC3052F	AB.....
Q	207	87-A30-076-080	C-TR, 2SC3052F	AB.....
Q	205	87-A30-076-080	C-TR, 2SC3052F	AB.....
Q	209	87-A30-190-080	TR, CC5551	AB.....
Q	214	87-A30-076-080	C-TR, 2SC3052F	AB.....
Q	213	87-A30-076-080	C-TR, 2SC3052F	AB.....
Q	212	87-A30-076-080	C-TR, 2SC3052F	AB.....
Q	211	87-A30-076-080	C-TR, 2SC3052F	AB.....
Q	219	87-A30-106-070	C-TR, CMBT5551	AB.....
Q	210	87-A30-190-080	TR, CC5551	AB.....
Q	218	87-A30-214-010	TR, 2SB1344	AB.....
Q	217	87-A30-214-010	TR, 2SB1344	AB.....
Q	216	87-A30-215-010	TR, 2SD2025	AB.....
Q	215	87-A30-215-010	TR, 2SD2025	AB.....
Q	224	87-A30-105-080	C-TR, RT1P 441C	AB.....
Q	220	87-A30-106-070	C-TR, CMBT5551	AB.....
Q	221	87-A30-196-080	TR, 2SC4115SRS	AB.....
R	239	87-A00-258-080	RES, M/F 0.22-1W J	AB.....
R	244	87-A00-258-080	RES, M/F 0.22-1W J	AB.....
R	242	87-A00-258-080	RES, M/F 0.22-1W J	AB.....
R	240	87-A00-258-080	RES, M/F 0.22-1W J	AB.....
R	241	87-A00-258-080	RES, M/F 0.22-1W J	AB.....
R	243	87-A00-258-080	RES, M/F 0.22-1W J	AB.....
TH	51	87-A91-042-080	C-THMS, 100K 55001	AB.....
TH	52	87-A91-042-080	C-THMS, 100K 55001	AB.....
WH	201	87-A61-039-010	CONN, 19P V WHT 52328	AB.....

MECHANICAL PARTS LIST - 1/1(MX-LM98/99MK2)

NOTE: The characters in the suffix column indicate the part usage.

KXX.....A.....
 EZXX.....B.....

REF.NO	PARTS NO.	KANRI NO.	DESCRIPTION	SUFFIX
	8Z-CC3-007-010		BADGE,AIWA 27.5 ABS SIL	AB.....
	8Z-CE3-001-010		CABI,FR AMP
	8Z-CE3-002-010		PANEL,SIDE L HIGH	AB.....
	8Z-CE3-004-110		PANEL,REAR AMP S
	8Z-CE3-005-110		PANEL, TOP	AB.....
	8Z-CE3-006-010		FOOT,DIA40 H4	AB.....
	8Z-CE3-007-010		REFLECTOR,FR	AB.....
	8Z-CE3-008-010		REFLECTOR, JOG	AB.....
	8Z-CE3-009-010		REFLECTOR, POWER	AB.....
	8Z-CE3-014-010		COVER, FAN	AB.....
	8Z-CE3-015-010		CABI,FR AMP (U)
	8Z-CE3-016-010		PANEL,SIDE L HIGH (U)
	8Z-CE3-018-110		PANEL, TOP (U) (*)
	8Z-CE3-019-010		PANEL,REAR AMP (U)
	8Z-CE3-020-010		PANEL,REAR AMP (EZ)
	8Z-CE3-021-010		PANEL,REAR AMP (K)	A.....
	8Z-CE3-022-010		CABI,FR AMP (EZ)	.B.....
	8Z-CE3-023-010		CABI,FR AMP (K)	A.....
	8Z-CE3-025-010		PANEL,REAR AMP (LH)
	8Z-CE3-028-010		PANEL,REAR AMP GS
	8Z-CE3-029-010		PANEL,REAR AMP EZSE
	8Z-CE3-030-010		PANEL,REAR AMP MK2K
	8Z-CE3-031-010		PANEL,REAR AMP MK2EZ
	8Z-CE3-033-010		PANEL,REAR AMP MK2 KSM	A.....
	8Z-CE3-034-010		PANEL,REAR AMP MK2 EZSM	.B.....
	8Z-CX3-007-010		PANEL,SIDE R HIGH CD	AB.....
	8Z-CX3-010-010		PANEL,SIDE R HIGH CD (U)
	8Z-CE3-010-010		KEY, POWER	AB.....
	8Z-CE3-011-010		KEY, FUN	AB.....
	8Z-CE3-012-010		KEY, ENTER	AB.....
	8Z-CE3-013-010		KNOB,RTRY JOG	AB.....
	81-664-202-010		HOLDER, PCB	AB.....
	87-064-185-010		HLDR, WIRE	AB.....
	8Z-CE3-202-110		GUIDE, LED CNT	AB.....
	8Z-CE3-205-010		HLDR, PWB ECO	AB.....
	8Z-CE3-206-010		CUSH, PL 9.2-4.2-5	AB.....
	8Z-CE3-207-010		PLATE, JOG	AB.....
	8Z-CE3-208-010		PLATE, TOP AMP	AB.....
	87-067-581-010		TAPPING SCREW, BVT2+3-15	AB.....
	87-067-586-010		TAPPING SCREW, BVT2+4-8	AB.....
	87-067-632-010		TAPPING SCREW, BVT2+3-15
	87-067-660-010		TAPPING SCREW, BVT2+3-8	AB.....
	87-067-689-010		TAPPING SCREW, BVT2+3-8	AB.....
	87-067-703-010		TAPPING SCREW, BVT2+3-10	AB.....
	87-067-761-010		TAPPING SCREW, BVT2+3-10	AB.....
	87-078-060-010		BVIT3PB+3-10	AB.....
	87-591-095-410		TAPPING SCREW, QIT+3-8 (GLD)	AB.....
	87-751-096-410		VT2+3-10 GLD	AB.....
	88-AR1-217-010		S-SCREW,BFT2+3-8	AB.....
	87-050-098-010		AC CODE ASSY,D
	87-085-184-010		BUSHING, AC CORD (D)
	87-085-185-010		BUSHING, AC CORD (E)	AB.....
	87-085-189-010		BUSHING, CORD (U)
	87-A80-092-010		AC CORD ASSY,E BLK SUN FAI	.B.....
	87-A80-108-010		AC CORD ASSY,K BLK 3P	A.....
	87-A80-110-010		AC CORD ASSY,U SPT-2W
	87-A80-146-010		AC CORD ASSY,G
	87-A90-193-010		HLDR,CV100 (B)	AB.....
	87-A90-908-010		F-BEAD, E1314MRC	AB.....
	87-A91-438-010		BUSHING,CABLE19P-1.5 SMK	AB.....
	88-906-121-110		FF-CABLE,6P	AB.....
	8Z-CE3-610-010		CONN ASSY,19P 52305-1911	AB.....
	8Z-CE3-611-010		PT,D SEOUL
	8Z-CE3-612-010		PT,U
	8Z-CE3-613-010		PT,EZ	.B.....
	8Z-CE3-614-010		PT,H
	8Z-CE3-633-010		PT,K	A.....
	8Z-CL1-663-010		FAN,MF40D-12-200MM	AB.....
*	8Z-CE3-203-010		GUIDE, LED L	AB.....
*	8Z-CE3-204-010		GUIDE, LED R	AB.....

ELECTRICAL MAIN PARTS LIST - 1/3(TX-LM98/99MK2)

NOTE: The characters in the suffix column indicate the part usage.

REF.NO	PARTS NO.	NO.	DESCRIPTION	SUFFIX
K		XX		A
EZ		XX		B
		KANRI		
C	505	87-010-156-080	C-CAP,S 15P-50 SL	AB
C	507	87-010-196-080	CHIP CAPACITOR,0.1-25	AB
C	504	87-010-196-080	CHIP CAPACITOR,0.1-25	AB
C	502	87-010-196-080	CHIP CAPACITOR,0.1-25	AB
C	503	87-010-196-080	CHIP CAPACITOR,0.1-25	AB
C	506	87-010-198-080	CAP, CHIP 0.022	AB
C	501	87-010-408-080	CAP, ELECT 47-50V	AB
C	508	87-012-145-080	CAP, CHIP S 270P CH	AB
C	517	87-010-196-080	CHIP CAPACITOR,0.1-25	AB
C	518	87-010-196-080	CHIP CAPACITOR,0.1-25	AB
C	515	87-010-196-080	CHIP CAPACITOR,0.1-25	AB
C	513	87-010-375-080	CAP,E 330-10 SME	AB
C	514	87-010-400-080	CAP, ELECT 0.47-50V	AB
C	516	87-A10-189-080	CAP,E 220-10 M	AB
C	550	87-010-196-080	CHIP CAPACITOR,0.1-25	AB
C	551	87-010-404-080	CAP, ELECT 4.7-50V	AB
C	553	87-010-404-080	CAP, ELECT 4.7-50V	AB
D	509	87-070-274-080	DIODE,1N4003 SEM	AB
D	506	87-A40-269-080	C-DIODE,MC2836	AB
D	501	87-A40-269-080	C-DIODE,MC2836	AB
D	508	87-A40-270-080	C-DIODE,MC2838	AB
D	504	87-A40-270-080	C-DIODE,MC2838	AB
D	503	87-A40-270-080	C-DIODE,MC2838	AB
D	507	87-A40-270-080	C-DIODE,MC2838	AB
D	511	87-A40-291-080	DIODE,1N4148 (CPT)	AB
D	510	87-A40-291-080	DIODE,1N4148 (CPT)	AB
IC	52	87-002-849-080	IC,NJM78L06A	AB
IC	51	8Z-CF3-617-010	C-IC,LC876580W-5M70	AB
L	501	87-A50-052-010	COIL,CLOCK 5.76MHZ T1	AB
Q	501	87-A30-076-080	C-TR,2SC3052F	AB
Q	504	87-A30-087-080	C-FET,2SK2158	AB
Q	502	87-A30-087-080	C-FET,2SK2158	AB
Q	509	87-A30-087-080	C-FET,2SK2158	AB
Q	503	87-A30-087-080	C-FET,2SK2158	AB
Q	507	89-327-143-080	TR,2SC2714 (0.1W)	AB
Q	505	89-327-143-080	TR,2SC2714 (0.1W)	AB
Q	506	89-327-143-080	TR,2SC2714 (0.1W)	AB
*		8Z-CE3-203-010	GUIDE,LED L	AB
*		8Z-CE3-204-010	GUIDE,LED R	AB
*		8Z-CF3-202-010	GUIDE,FL	AB
C	701	87-010-178-080	CHIP CAP 1000P	AB
C	706	87-010-322-080	C-CAP,S 100P-50 CH	AB
C	702	87-010-405-080	CAP, ELECT 10-50V	AB
CN	701	87-A60-041-010	CONN,30P V 9604S-30C	AB
CN	702	87-A60-050-010	CONN,20P V 9604S-20C	AB
CN	709	87-A60-619-010	CONN,2P V 2MM JMT	AB
CN	708	87-A60-619-010	CONN,2P V 2MM JMT	AB
CN	707	88-805-020-790	CONN ASSY,2P 70MM	AB
CN	706	88-805-021-590	CONN ASSY,2P	AB
CN	710	87-A60-059-010	CONN,08P V 9604S-08C	AB
D	703	87-A40-291-080	DIODE,1N4148 (CPT)	AB
D	708	87-A40-291-080	DIODE,1N4148 (CPT)	.B
D	704	87-A40-291-080	DIODE,1N4148 (CPT)	AB
D	705	87-A40-291-080	DIODE,1N4148 (CPT)	AB
D	711	87-A40-640-010	LED,SELU1E10CXM BLUE-EF	AB
D	710	87-A40-640-010	LED,SELU1E10CXM BLUE-EF	AB
FL	701	8Z-CL4-621-010	FL,13-ST-36GNK	AB
IC	701	87-070-246-010	IC,GP1U271X	AB
R	781	87-008-372-080	FILTER, EMI BL OIRNI	.B
R	780	87-008-372-080	FILTER, EMI BL OIRNI	.B
S	705	87-A90-696-080	SW,TACT TS2103-03-430	AB
S	704	87-A90-696-080	SW,TACT TS2103-03-430	AB
S	707	87-A90-696-080	SW,TACT TS2103-03-430	AB
S	703	87-A90-696-080	SW,TACT TS2103-03-430	AB
S	706	87-A90-696-080	SW,TACT TS2103-03-430	AB
S	701	87-A90-696-080	SW,TACT TS2103-03-430	AB
S	702	87-A90-696-080	SW,TACT TS2103-03-430	AB
C	307	87-010-180-080	C-CER 1500P	AB
C	306	87-010-180-080	C-CER 1500P	AB
C	311	87-010-182-080	C-CAP,S 2200P-50 B	AB
C	310	87-010-182-080	C-CAP,S 2200P-50 B	AB
C	312	87-010-213-080	C-CAP,S 0.015-50 B	AB
C	313	87-010-213-080	C-CAP,S 0.015-50 B	AB
C	314	87-010-400-080	CAP, ELECT 0.47-50V	AB
C	316	87-010-400-080	CAP, ELECT 0.47-50V	AB
C	317	87-010-400-080	CAP, ELECT 0.47-50V	AB
C	315	87-010-400-080	CAP, ELECT 0.47-50V	AB
C	322	87-010-154-080	CAP CHIP 10P	AB
C	320	87-010-374-080	CAP, ELECT 47-10V	AB
C	321	87-010-374-080	CAP, ELECT 47-10V	AB

ELECTRICAL MAIN PARTS LIST - 2/3(TX-LM98/99MK2)

C	340	87-012-157-080	C-CAP,S 330P-50 CH	AB
C	359	87-012-157-080	C-CAP,S 330P-50 CH	AB
C	704	87-012-157-080	C-CAP,S 330P-50 CH	AB
C	703	87-012-157-080	C-CAP,S 330P-50 CH	AB
D	302	87-A40-293-080	ZENER,DZ2.7M	AB
D	301	87-A40-293-080	ZENER,DZ2.7M	AB
IC	32	87-A21-443-040	C-IC,M62495AFP	AB
C	209	87-010-188-080	CAP,CHIP 6800P	AB
C	204	87-010-196-080	CHIP CAPACITOR,0.1-25	AB
C	206	87-010-404-080	CAP, ELECT 4.7-50V	AB
C	208	87-010-404-080	CAP, ELECT 4.7-50V	AB
C	207	87-010-404-080	CAP, ELECT 4.7-50V	AB
C	205	87-010-404-080	CAP, ELECT 4.7-50V	AB
C	213	87-010-178-080	CHIP CAP 1000P	AB
C	214	87-010-178-080	CHIP CAP 1000P	AB
C	210	87-010-188-080	CAP,CHIP 6800P	AB
C	217	87-010-195-080	C-CAP,S 0.068-25 F	AB
C	218	87-010-195-080	C-CAP,S 0.068-25 F	AB
C	216	87-010-197-080	CAP, CHIP 0.01 DM	AB
C	215	87-010-197-080	CAP, CHIP 0.01 DM	AB
C	219	87-010-545-080	CAP, ELECT 0.22-50V	AB
C	211	87-012-140-080	CAP 470P	AB
C	212	87-012-140-080	CAP 470P	AB
C	221	87-010-408-080	CAP, ELECT 47-50V	AB
C	223	87-010-545-080	CAP, ELECT 0.22-50V	AB
C	220	87-010-545-080	CAP, ELECT 0.22-50V	AB
C	222	87-010-545-080	CAP, ELECT 0.22-50V	AB
C	234	87-010-408-080	CAP, ELECT 47-50V	AB
D	205	87-A40-291-080	DIODE,1N4148 (CPT)	AB
D	207	87-A40-291-080	DIODE,1N4148 (CPT)	AB
D	206	87-A40-291-080	DIODE,1N4148 (CPT)	AB
IC	21	87-A21-022-040	C-IC,BA3880FS	AB
Q	204	87-A30-071-080	C-TR,RT1N 144C	AB
Q	205	87-A30-071-080	C-TR,RT1N 144C	AB
C	225	87-010-196-080	CHIP CAPACITOR,0.1-25	AB
C	228	87-010-197-080	CAP, CHIP 0.01 DM	AB
C	227	87-010-197-080	CAP, CHIP 0.01 DM	AB
C	224	87-010-384-080	CAP, ELECT 100-25V	AB
C	229	87-010-402-080	CAP, ELECT 2.2-50V	AB
C	226	87-010-408-080	CAP, ELECT 47-50V	AB
C	233	87-010-402-080	CAP, ELECT 2.2-50V	AB
C	231	87-010-405-080	CAP, ELECT 10-50V	AB
C	230	87-010-405-080	CAP, ELECT 10-50V	AB
IC	22	87-A21-103-040	C-IC,MM1454XFBF	AB
C	202	87-010-235-080	CAP,E 470-16 SME	AB
C	201	87-010-381-080	CAP, ELECT 330-16V	AB
C	237	87-010-197-080	CAP, CHIP 0.01 DM	AB
C	238	87-010-197-080	CAP, CHIP 0.01 DM	AB
C	235	87-010-237-080	CAP, ELECT 1000-16V	AB
C	239	87-010-322-080	C-CAP,S 100P-50 CH	AB
C	236	87-010-322-080	C-CAP,S 100P-50 CH	AB
C	232	87-016-268-080	CAP,E 22-10 M BP SME	AB
C	245	87-010-197-080	CAP, CHIP 0.01 DM	AB
C	248	87-010-322-080	C-CAP,S 100P-50 CH	AB
C	247	87-010-322-080	C-CAP,S 100P-50 CH	AB
C	249	87-010-322-080	C-CAP,S 100P-50 CH	AB
C	244	87-010-322-080	C-CAP,S 100P-50 CH	AB
C	246	87-010-322-080	C-CAP,S 100P-50 CH	AB
C	242	87-010-322-080	C-CAP,S 100P-50 CH	AB
C	243	87-010-322-080	C-CAP,S 100P-50 CH	AB
C	241	87-010-322-080	C-CAP,S 100P-50 CH	AB
C	240	87-010-322-080	C-CAP,S 100P-50 CH	AB
C	250	87-010-197-080	CAP, CHIP 0.01 DM	AB
C	252	87-010-322-080	C-CAP,S 100P-50 CH	AB
C	251	87-010-322-080	C-CAP,S 100P-50 CH	AB
C	254	87-018-209-080	CAP, CER 0.1-50V	AB
C	253	87-018-209-080	CAP, CER 0.1-50V	AB
C	303	87-010-196-080	CHIP CAPACITOR,0.1-25	AB
C	304	87-010-196-080	CHIP CAPACITOR,0.1-25	AB
C	301	87-010-401-080	CAP, ELECT 1-50V	AB
C	302	87-010-401-080	CAP, ELECT 1-50V	AB
C	355	87-010-188-080	CAP,CHIP 6800P	AB
C	354	87-010-188-080	CAP,CHIP 6800P	AB
C	358	87-010-197-080	CAP, CHIP 0.01 DM	AB
C	353	87-010-404-080	CAP, ELECT 4.7-50V	AB
C	352	87-010-404-080	CAP, ELECT 4.7-50V	AB
C	350	87-010-407-080	CAP, ELECT 33-50V	AB
C	351	87-010-407-080	CAP, ELECT 33-50V	AB
C	356	87-010-545-080	CAP, ELECT 0.22-50V	AB
C	357	87-010-545-080	CAP, ELECT 0.22-50V	AB
C	401	87-010-196-080	CHIP CAPACITOR,0.1-25	AB
C	403	87-010-322-080	C-CAP,S 100P-50 CH	AB
C	404	87-010-379-080	CAP, ELECT 22-16V	AB
C	402	87-010-380-080	CAP, ELECT 47-16V	AB
C	519	87-010-196-080	CHIP CAPACITOR,0.1-25	AB
C	522	87-010-400-080	CAP, ELECT 0.47-50V	AB
C	521	87-010-402-080	CAP, ELECT 2.2-50V	AB

ELECTRICAL PARTS LIST-3/3(TX-LM98/99MK2)

CN	205	87-099-546-010	CONN,16P TKC-M16P-B1	.B.....
CN	207	87-A60-041-010	CONN,30P V 9604S-30C	AB.....
CN	206	87-A60-050-010	CONN,20P V 9604S-20C	AB.....
CN	208	87-A60-059-010	CONN,08P V 9604S-08C	AB.....
CN	204	87-A61-025-010	CONN,4P TKC-M4P-B1	AB.....
CN	203	87-A61-042-010	CONN,19P H BLK 52641-1911	AB.....
CN	201	87-A61-043-010	CONN,20P H BLK 52641-2011	AB.....
CN	202	87-A61-044-010	CONN,19P H BLUE 52641-1914	AB.....
CN	705	87-009-799-010	CONN,14P TKC-M X	A.....
CN	705	87-009-800-010	CONN,TKC-M 16X	.B.....
CN	704	87-099-570-010	CONN,13P TUC-P13P-B1	A.....
CN	704	87-A60-189-010	CONN,16P V TUC-P16P-B1	.B.....
CN	703	87-A61-024-010	CONN,4P H BLK TKC-M	AB.....
D	304	87-001-731-080	ZENER,HZS6C2L	AB.....
D	303	87-A40-291-080	DIODE,1N4148 (CPT)	AB.....
D	512	87-A40-291-080	DIODE,1N4148 (CPT)	AB.....
D	513	87-A40-291-080	DIODE,1N4148 (CPT)	AB.....
IC	31	87-020-877-010	IC,LC4966	AB.....
IC	401	87-017-915-080	IC,BU4094BCF	AB.....
J	701	80-MT3-631-010	JACK,PIN 2P EARTH	AB.....
JW	802	87-018-123-080	CAP, CER 220P-50V	AB.....
JW	814	87-008-372-080	FILTER, EMI BL OIRNI	AB.....
JW	838	87-018-134-080	CAPACITOR,TC-U 0.01-16	AB.....
Q	206	87-A30-071-080	C-TR,RT1N 144C	AB.....
Q	207	87-A30-072-080	C-TR,RT1P 144C	AB.....
Q	203	87-A30-073-080	C-TR,RT1N 141C	AB.....
Q	201	87-A30-196-080	TR,2SC4115SRS	AB.....
Q	306	87-026-297-080	TR,DTA144TK	AB.....
Q	309	87-026-609-080	TR,KTA1266GR	AB.....
Q	304	87-A30-047-080	TR,CSD655E	AB.....
Q	307	87-A30-047-080	TR,CSD655E	AB.....
Q	305	87-A30-047-080	TR,CSD655E	AB.....
Q	308	87-A30-047-080	TR,CSD655E	AB.....
Q	302	87-A30-072-080	C-TR,RT1P 144C	AB.....
Q	303	87-A30-073-080	C-TR,RT1N 141C	AB.....
Q	301	87-A30-073-080	C-TR,RT1N 141C	AB.....
Q	513	87-026-297-080	TR,DTA144TK	AB.....
Q	512	87-026-610-080	TR,KTC3198GR	AB.....
Q	511	87-026-610-080	TR,KTC3198GR	AB.....
Q	510	87-026-610-080	TR,KTC3198GR	AB.....

MECHANICAL PARTS LIST-1/1(TX-LM98/99MK2)

NOTE: The characters in the suffix column indicate the part usage.

REF.NO	PARTS NO.	NO.	DESCRIPTION	SUFFIX
K		XX		A
EZ		XX		B
		KANRI		
8Z-CC3-007-010			BADGE,AIWA 27.5 ABS SIL	AB
8Z-CE3-005-110			PANEL, TOP	AB
8Z-CE3-006-010			FOOT, DIA40 H4	AB
8Z-CE3-007-010			REFLECTOR, FR	AB
8Z-CE3-018-110			PANEL, TOP (U) (*)	
8Z-CF3-001-010			CABI, FR TUNER	A
8Z-CF3-002-010			PANEL, SIDE L LOW	AB
8Z-CF3-003-010			PANEL, SIDE R LOW	AB
8Z-CF3-004-010			PANEL, REAR TUNER (H)	
8Z-CF3-005-010			WINDOW, DISPLAY	AB
8Z-CF3-006-010			WINDOW, SENSOR	AB
8Z-CF3-009-010			CABI, FR TUNER (EZ)	.B
8Z-CF3-010-010			PANEL, REAR TUNER (EZ)	
8Z-CF3-011-010			CABI, FR TUNER (U)	
8Z-CF3-012-010			PANEL, SIDE L LOW (U)	
8Z-CF3-013-010			PANEL, SIDE R LOW (U)	
8Z-CF3-014-010			PANEL, REAR TUNER (U)	
8Z-CF3-015-110			PANEL, REAR TUNER YKS	
8Z-CF3-016-110			PANEL, REAR TUNER S	
8Z-CF3-019-010			PANEL, REAR TUNER MK2 YEZSE	
8Z-CF3-020-010			PANEL, REAR TUNER MK2 YKSE	
8Z-CF3-021-010			PANEL, REAR TUNER MK2 YKSM	A
8Z-CF3-022-010			PANEL, REAR TUNER MK2 YEZSM	.B
8Z-CF3-007-010			KEY, DEMO	AB
8Z-CF3-008-010			KEY, TUNER	AB
8Z-CE3-202-110			GUIDE, LED CNT	AB
8Z-CF3-203-010			PLATE, TOP TUNER	AB
87-067-660-010			TAPPING SCREW, BVT2+3-8	AB
87-067-703-010			TAPPING SCREW, BVT2+3-10	AB
87-067-761-010			TAPPING SCREW, BVT2+3-10	AB
87-078-060-010			BVIT3PB+3-10	AB
87-721-096-410			QT2+3-10 GLD	AB
87-012-199-080			CAP 220P	AB
88-908-151-110			FF-CABLE, 8P 1.25-150MM	AB
88-920-151-110			FF-CABLE, 20P 1.25	AB
88-930-151-110			FF-CABLE, 30P 1.25	AB

ELECTRICAL PARTS LIST-1/2 (DX-LM99MK2)

NOTE: The characters in the suffix column indicate the part usage.

REF.NO	PARTS NO.	XX KANRI NO.	DESCRIPTION	A SUFFIX
C	95		CAP, CHIP 0.01 DM	A
C	92		CAP, ELECT 22-25V	A
C	91		CAP, ELECT 47-50V	A
Q	91		TR, CSD655E	A
Q	94		TR, CSD655E	A
Q	93		TR, CSD655E	A
Q	92		TR, CSD655E	A
C	2		CAP, CHIP 0.01 DM	A
C	5		CAP, CHIP 0.01 DM	A
C	8		CAP, CHIP 0.022	A
C	4		CAP, ELECT 220-10V	A
C	9		CAP, ELECT 220-10V	A
C	3		CAP, ELECT 100-10V	A
C	6		CAP, ELECT 47-10V	A
C	1		CAP, ELECT 3.3-50V	A
C	7		C-CAP, S 1000P-50 CH	A
C	13		CHIP CAPACITOR, 0.033	A
C	18		C-CAP, S 0.015-50 B	A
C	10		CAP, ELECT 100-10V	A
C	12		CAP, ELECT 1-50V	A
C	14		CAP, ELECT 10-50V	A
C	17		C-CAP, S 330P-50 CH	A
C	15		CAP, CER 0.1-50V	A
C	22		C-CAP, S 2700P-50 B	A
C	29		CAP, CHIP 4700P	A
C	20		CHIP CAPACITOR, 0.033	A
C	28		CAP, CHIP 0.01 DM	A
C	23		CHIP-CAP, S 0.068-25B	A
C	25		C-CAP, S 680P-50 CH	A
C	34		CHIP CAPACITOR 3300P(K)	A
C	38		CHIP CAPACITOR, 0.1-25	A
C	35		CAP, CHIP 0.01 DM	A
C	36		CAP, ELECT 47-10V	A
C	32		CAP, ELECT 47-10V	A
C	31		CAP, ELECT 0.47-50V	A
C	33		CAP, ELECT 1-50V	A
C	37		CAP, ELECT 4.7-50V	A
C	30		C-CAP, S 220P-50 CH	A
C	39		C-CAP, S 1000P-50 CH	A
C	40		C-CAP, S 1P-50 CH	A
C	45		CHIP CAPACITOR, 0.1-25	A
C	47		CHIP CAPACITOR, 0.1-25	A
C	46		CHIP CAPACITOR, 0.1-25	A
C	42		C-CAP, S 22P-50V	A
C	48		C-CAP, S 27P-50 CH	A
C	55		CAP, ELECT 100-10V	A
C	59		CAP, ELECT 100-10V	A
C	57		C-CAP, S 33P-50 CH	A
C	58		C-CAP, S 33P-50 CH	A
C	50		CAP 470P	A
C	51		C-CAP, S 220P-50 CH	A
C	60		CHIP CAPACITOR, 0.1-25	A
C	66		CHIP CAPACITOR, 0.1-25	A
C	61		CHIP CAPACITOR, 0.1-25	A
C	67		CAP, ELECT 100-10V	A
C	68		C-CAP, S 100P-50 CH	A
C	65		CAP, ELECT 4.7-50V	A
C	69		C-CAP, S 150P-50 CH	A
C	62		CAP, E 220-6.3 M SSL	A
C	77		CAP, CHIP 0.01 DM	A
C	75		CAP, CHIP 0.01 DM	A
C	78		CAP, ELECT 470-10V	A
C	79		CAP, ELECT 100-10V	A
C	76		CAP, E 1000-10 REA	A
C	83		CAP, CHIP S 1800P	A
C	84		CAP, CHIP S 1800P	A
C	80		CAP, CHIP 0.01 DM	A
C	81		CAP, ELECT 10-50V	A
C	82		CAP, ELECT 10-50V	A
C	94		CHIP CAPACITOR, 0.1-25	A
C	93		CAP, CHIP 0.01 DM	A
C	96		CAP, CHIP 0.01 DM	A
C	110		CHIP CAPACITOR, 0.1-25	A
C	200		C-CAP, S 1000P-50 CH	A
D	1		DIODE, 1N4148 (CPT)	A
D	3		DIODE, 1N4148 (CPT)	A
D	2		DIODE, 1N4148 (CPT)	A
IC	3		IC, BA5936	A
IC	1		C-IC, LA9241ML	A
IC	2		C-IC, LC78622ED	A
JW	6		DIODE, 1N4148 (CPT)	A

ELECTRICAL PARTS LIST-2/2 (DX-LM99MK2)

JW	3	87-A40-291-080	DIODE,1N4148 (CPT)	A.....
JW	12	87-008-372-080	FILTER, EMI BL OIRNI	A.....
L	1	87-003-102-080	COIL, 10UH	A.....
L	5	87-003-152-080	COIL, 100UH	A.....
L	4	87-003-152-080	COIL, 100UH	A.....
L	3	87-008-372-080	FILTER, EMI BL OIRNI	A.....
Q	3	87-026-239-080	TR,DTC114TK (0.2W)	A.....
Q	1	87-026-463-080	TR,2SA933S (0.3W)	A.....
Q	71	89-113-187-880	TRANSISTOR,2SA1318 (0.5W)	A.....
Q	84	87-026-239-080	TR,DTC114TK (0.2W)	A.....
Q	83	87-026-239-080	TR,DTC114TK (0.2W)	A.....
Q	82	87-026-297-080	TR,DTA144TK	A.....
Q	81	87-026-297-080	TR,DTA144TK	A.....
R	68	87-A50-189-080	C-COIL,S BLM21B272S	A.....
SFR	130	87-024-437-080	SFR100K,RH063EC	A.....
X	1	87-A70-046-010	VIB,XTAL 16.934MHZ	A.....
*		8Z-CE3-203-010	GUIDE,LED L	A.....
*		8Z-CE3-204-010	GUIDE,LED R	A.....
C	107	87-010-197-080	CAP, CHIP 0.01 DM	A.....
C	102	87-010-322-080	C-CAP,S 100P-50 CH	A.....
C	104	87-010-322-080	C-CAP,S 100P-50 CH	A.....
C	109	87-010-322-080	C-CAP,S 100P-50 CH	A.....
C	103	87-010-322-080	C-CAP,S 100P-50 CH	A.....
C	101	87-010-322-080	C-CAP,S 100P-50 CH	A.....
C	108	87-010-374-080	CAP, ELECT 47-10V	A.....
C	111	87-010-197-080	CAP, CHIP 0.01 DM	A.....
C	112	87-010-382-080	CAP, ELECT 22-25V	A.....
C	113	87-010-405-080	CAP, ELECT 10-50V	A.....
C	302	87-010-197-080	CAP, CHIP 0.01 DM	A.....
C	301	87-010-374-080	CAP, ELECT 47-10V	A.....
CN	2	87-A60-081-010	CONN,06P H 9604S-06F	A.....
CN	3	87-A60-082-010	CONN,05P H 9604S-05F	A.....
CN	1	87-A60-424-010	CONN,16P V TOC-B	A.....
CN	101	87-099-562-010	CONN,18P TUC-P18X-B1	A.....
CN	102	87-099-573-010	CONN,18P TUC-P18P-B1	A.....
CN	103	87-A60-063-010	CONN,04P V 9604S-04C	A.....
CN	104	87-A61-040-010	CONN,20P V WHT 52328	A.....
CN	105	87-A61-041-010	CONN,15P H BLK 52303-1511	A.....
CN	202	87-A60-083-010	CONN,04P H 9604S-04F	A.....
CN	203	88-805-020-790	CONN ASSY,2P 70MM	A.....
CN	204	88-805-020-790	CONN ASSY,2P 70MM	A.....
CN	303	87-099-555-010	CONN,7P TUC-P	A.....
CN	304	87-099-566-010	CONN,7P TUC-P7P-B1	A.....
CN	302	87-A60-619-010	CONN,2P V 2MM JMT	A.....
CN	301	87-A60-619-010	CONN,2P V 2MM JMT	A.....
D	101	87-017-931-080	ZENER,MTZJ5.6B	A.....
D	202	87-A40-640-010	LED,SELU1E10CXM BLUE-EF	A.....
D	201	87-A40-640-010	LED,SELU1E10CXM BLUE-EF	A.....
IC	5	87-017-825-010	IC,GP1F32T	A.....
IC	4	87-017-915-080	IC,BU4094BCF	A.....
IC	301	87-A21-326-010	IC,TC74HC154AP	A.....
Q	102	87-026-238-080	TR,DTC144WK	A.....
Q	101	87-026-580-080	C-TR,DTA123JK	A.....
Q	305	87-026-233-080	TR,DTA114TK-TP	A.....
Q	307	87-026-233-080	TR,DTA114TK-TP	A.....
Q	306	87-026-233-080	TR,DTA114TK-TP	A.....
Q	308	87-026-233-080	TR,DTA114TK-TP	A.....
Q	302	87-026-233-080	TR,DTA114TK-TP	A.....
Q	303	87-026-233-080	TR,DTA114TK-TP	A.....
Q	304	87-026-233-080	TR,DTA114TK-TP	A.....
Q	309	87-026-233-080	TR,DTA114TK-TP	A.....
Q	310	87-026-233-080	TR,DTA114TK-TP	A.....
Q	312	87-026-233-080	TR,DTA114TK-TP	A.....
Q	313	87-026-233-080	TR,DTA114TK-TP	A.....
Q	311	87-026-233-080	TR,DTA114TK-TP	A.....
S	202	87-A90-696-080	SW,TACT TS2103-03-430	A.....
S	203	87-A90-696-080	SW,TACT TS2103-03-430	A.....
S	200	87-A90-696-080	SW,TACT TS2103-03-430	A.....
S	201	87-A90-696-080	SW,TACT TS2103-03-430	A.....
S	204	87-A90-696-080	SW,TACT TS2103-03-430	A.....
S	205	87-A90-696-080	SW,TACT TS2103-03-430	A.....

MECHANICAL PARTS LIST-1/1(DX-LM99MK2)

NOTE: The characters in the suffix column indicate the part usage.

REF.NO	PARTS NO.	XX KANRI NO.	DESCRIPTION	A SUFFIX
				A.....
	8Z-CC3-007-010		BADGE,AIWA 27.5 ABS SIL	A.....
	8Z-CE3-005-110		PANEL, TOP	A.....
	8Z-CE3-006-010		FOOT, DIA40 H4	A.....
	8Z-CE3-007-010		REFLECTOR, FR	A.....
	8Z-CE3-018-110		PANEL, TOP (U) (*)
	8Z-CX3-001-110		CABI, FR CD	A.....
	8Z-CX3-002-210		PANEL, REAR CD S
	8Z-CX3-003-010		PANEL, TRAY	A.....
	8Z-CX3-004-010		RING, CD	A.....
	8Z-CX3-006-010		PANEL, SIDE L HIGH CD	A.....
	8Z-CX3-007-010		PANEL, SIDE R HIGH CD	A.....
	8Z-CX3-008-110		CABI, FR CD (U) (*)
	8Z-CX3-009-010		PANEL, SIDE L HIGH CD (U)
	8Z-CX3-010-010		PANEL, SIDE R HIGH CD (U)
	8Z-CX3-011-010		PANEL, REAR CD (U)
	8Z-CX3-012-010		PANEL, REAR CD (Y)
	8Z-CX3-013-010		PANEL, REAR CD YLHS
	8Z-CX3-014-010		PANEL, REAR CD YSE
	8Z-CX3-016-010		PANEL, REAR CD MK2 YSM	A.....
	8Z-CC3-005-010		KEY, UP DOWN	A.....
	8Z-CX3-005-010		KEY, PLAY CD	A.....
	87-CE1-214-010		FELT 10-40	A.....
	8Z-CE3-202-110		GUIDE, LED CNT	A.....
	8Z-CX3-202-010		PLATE, TOP CD	A.....
	8Z-CX3-204-010		HLDR, PWB CD	A.....
	87-067-584-010		TAPPING SCREW, BVT2+3-6	A.....
	87-067-660-010		TAPPING SCREW, BVT2+3-8	A.....
	87-067-703-010		TAPPING SCREW, BVT2+3-10	A.....
	87-067-761-010		TAPPING SCREW, BVT2+3-10	A.....
	87-078-060-010		BVIT3PB+3-10	A.....
	87-721-096-410		QT2+3-10 GLD	A.....
	88-904-261-110		FF-CABLE, 4P 1.25 260MM	A.....
	88-905-111-110		FF-CABLE, 5P 1.25 110MM	A.....
	88-906-321-110		FF-CABLE, 6P 1.25 320MM	A.....
	8Z-CX3-607-010		CONN ASSY, 20P 52305-2011	A.....
	8Z-CX3-608-010		FF-CABLE, 16P 1.0 320MM	A.....

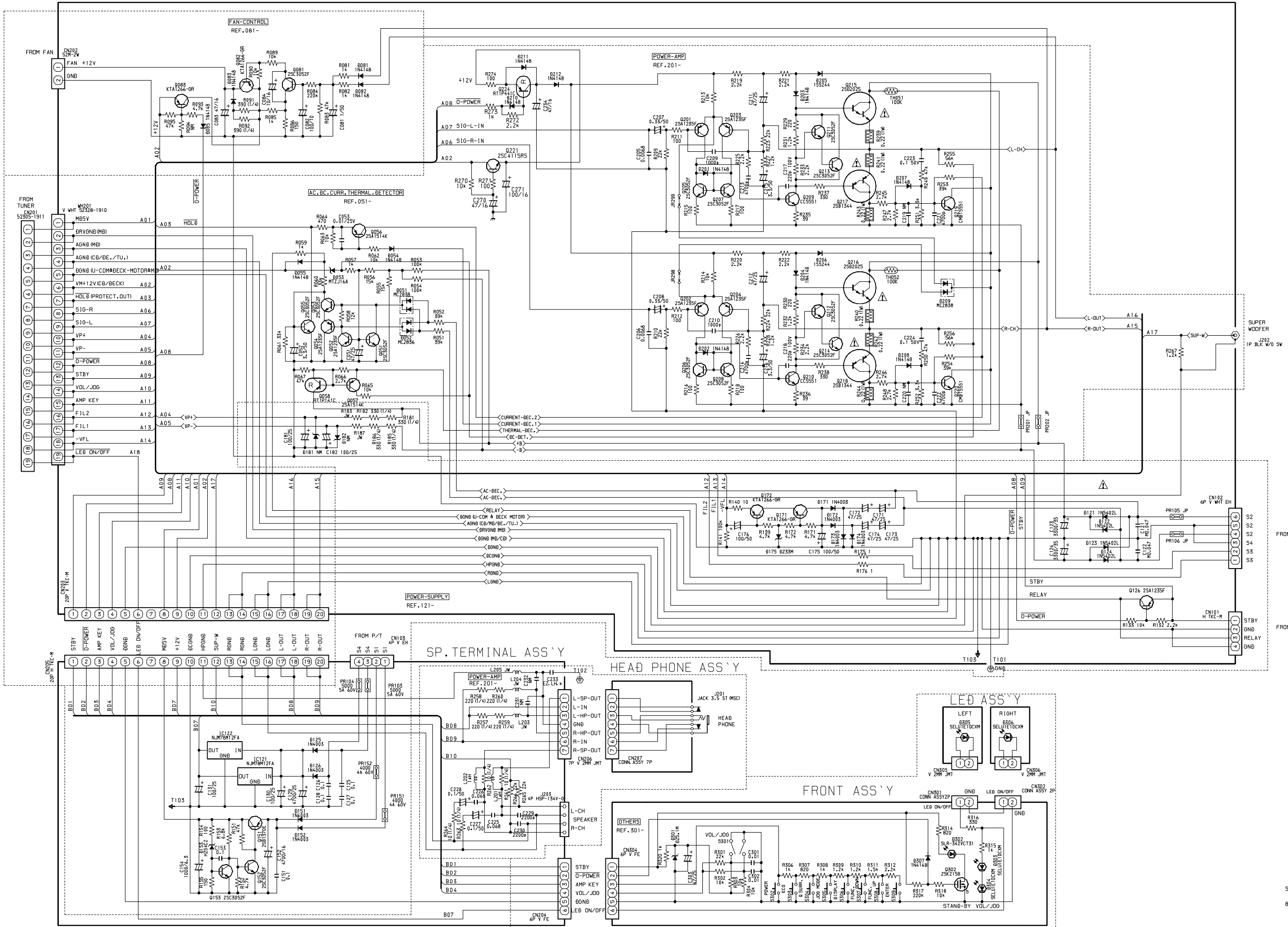
ACCESSORIES / PACKAGE LIST - 1/1

NOTE: The characters in the suffix column indicate the part usage.

REF.NO	PARTS NO.	KANRI NO.	DESCRIPTION	SUFFIX
K		XX		A
EZ		XX		B
8Z-CLP-904-010			IB,G(E) I	
8Z-CLP-905-010			IB,K(E) I	
8Z-CLP-906-010			IB,EZ(9L) I	
8Z-CLP-915-010			IB,K(E) E	
8Z-CLP-916-010			IB,EZ(9L) E	
8Z-CLP-921-010			IB,K(E)M, MK2	A
8Z-CLP-922-010			IB,EZ(9L)M, MK2	.B
8Z-CLP-925-010			IB,K(E)E,MK2	
8Z-CLP-926-010			IB,EZ(9L)E,MK 2	
87-A90-030-010			ANT,LOOP AM-NC C	AB
87-A90-118-010			ANT,WIRE FM (Z)	AB
8Z-CK4-962-010			RC UNIT,RC-ZAT04 (VS)	AB

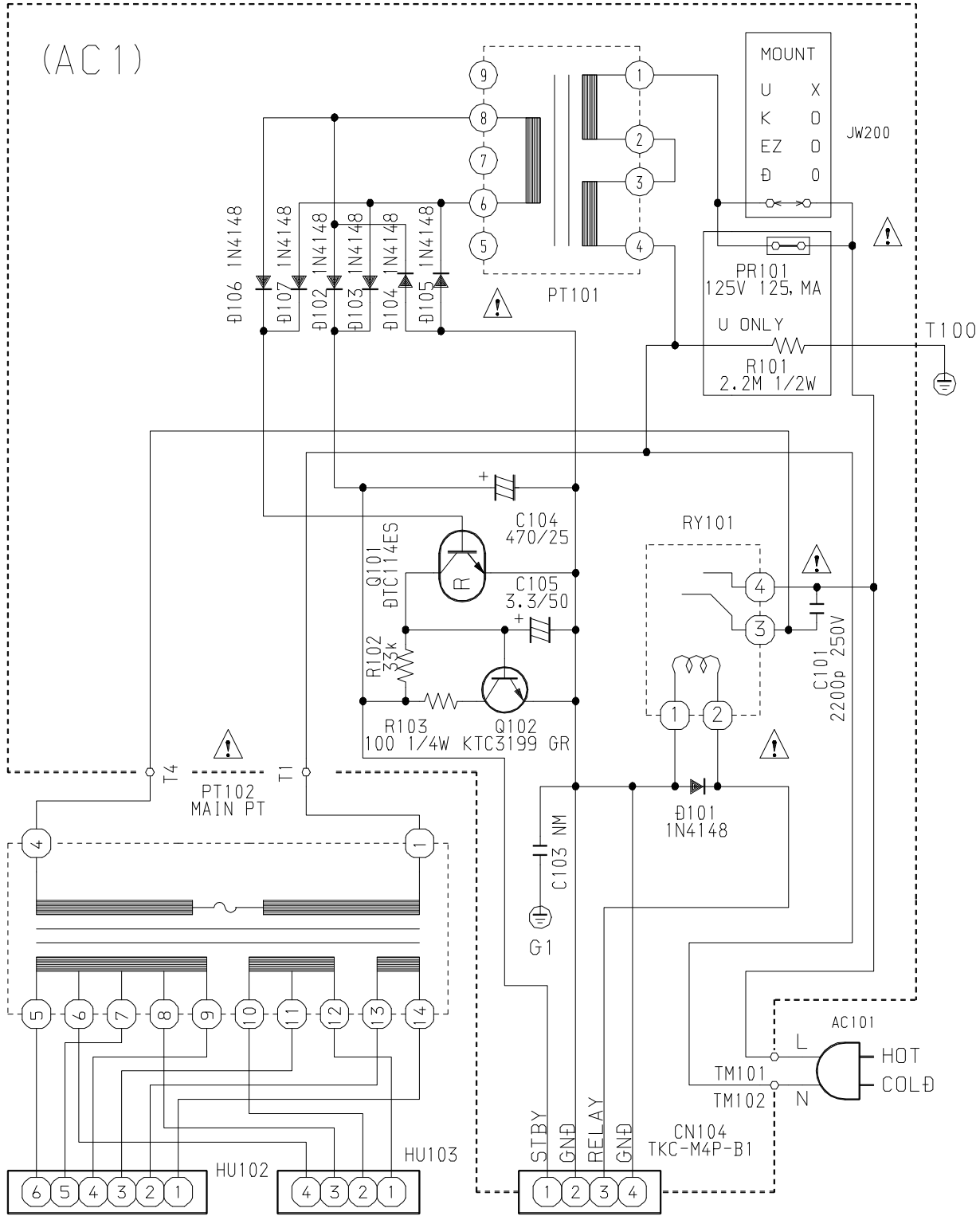
SCHEMATIC DIAGRAM - 1 (MAIN) <MX-LM98/99MK2>

MAIN AMP ASS'Y



99/03/13
JINKO
SCHEMATIC DIAGRAM (AMP)
8Z CL3

SCHEMATIC DIAGRAM -2 (PT) <MX-LM98/99MK2>

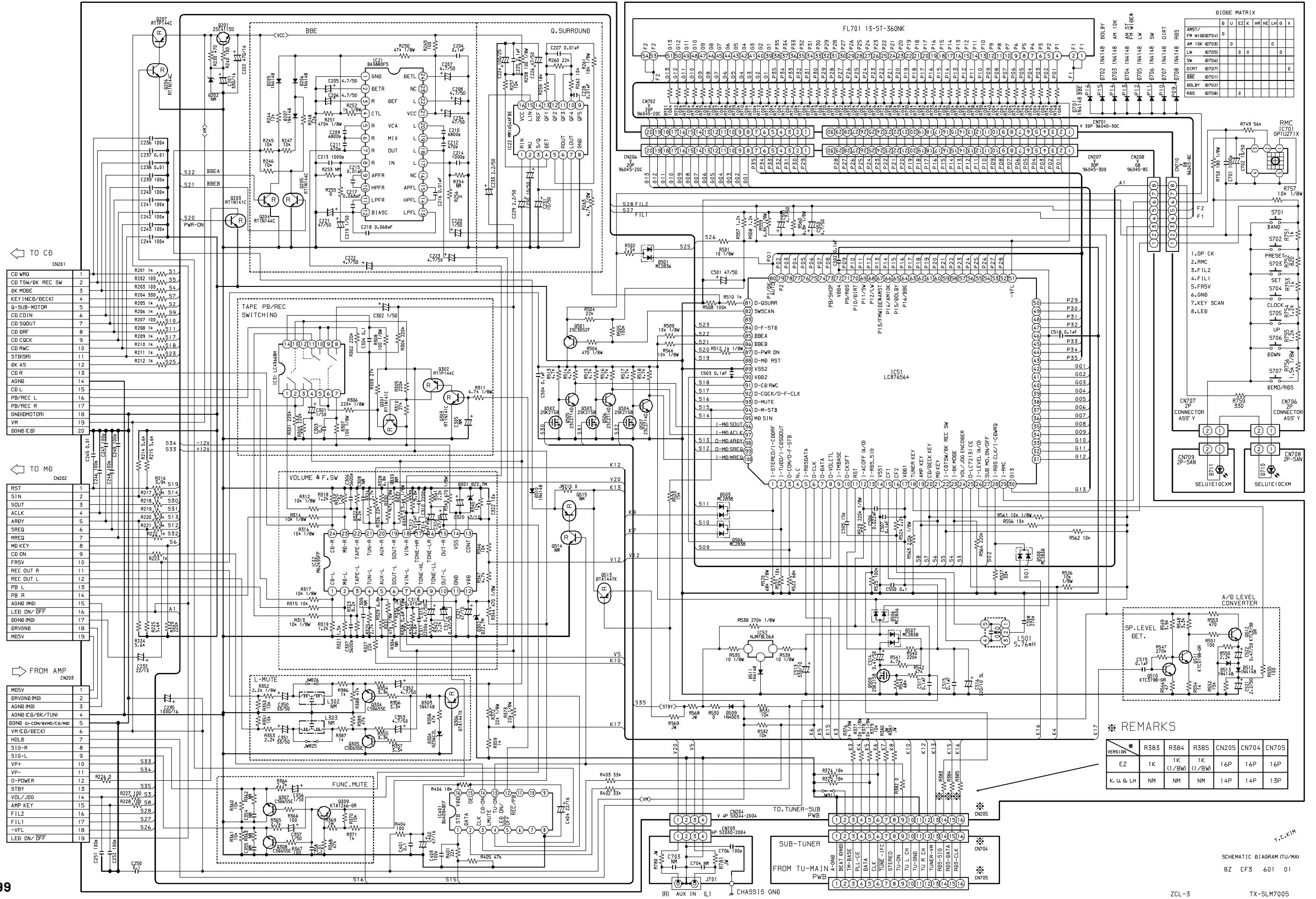


JINKO
99/03/04

PWB, EC1

8Z CL3

SCHEMATIC DIAGRAM - 3 (MAIN) <TX-LM98/99MK2>



TO CD

TO MD

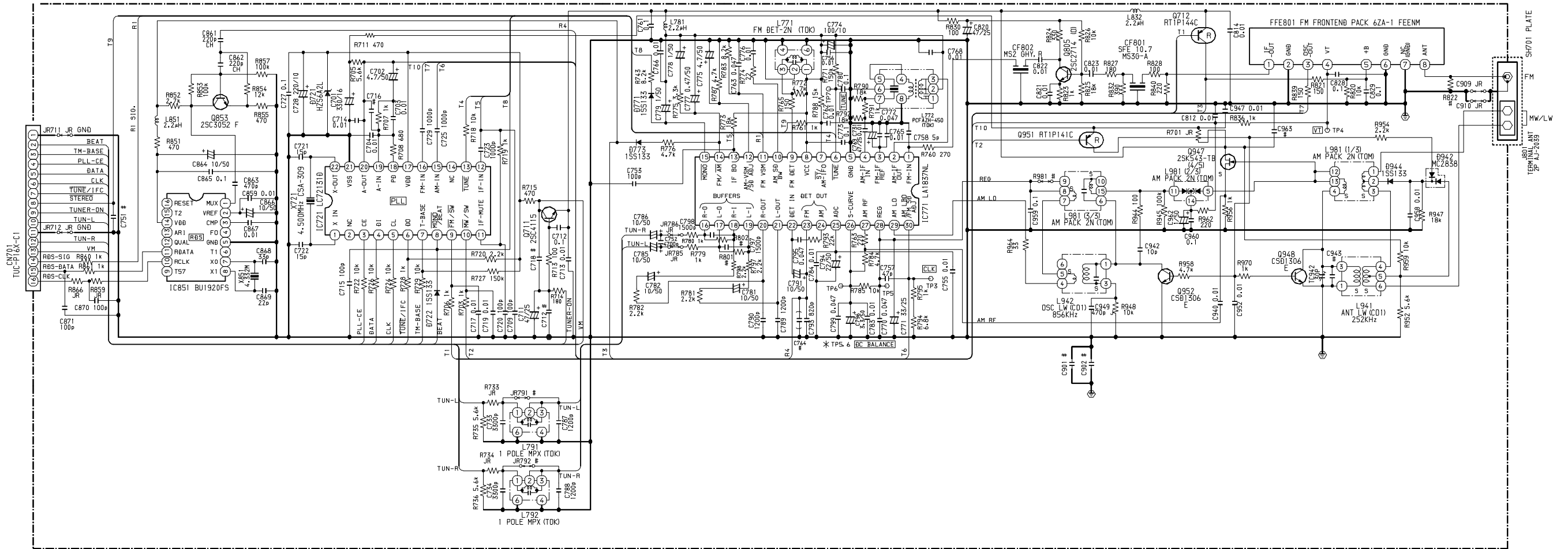
FROM AMP

REMARKS

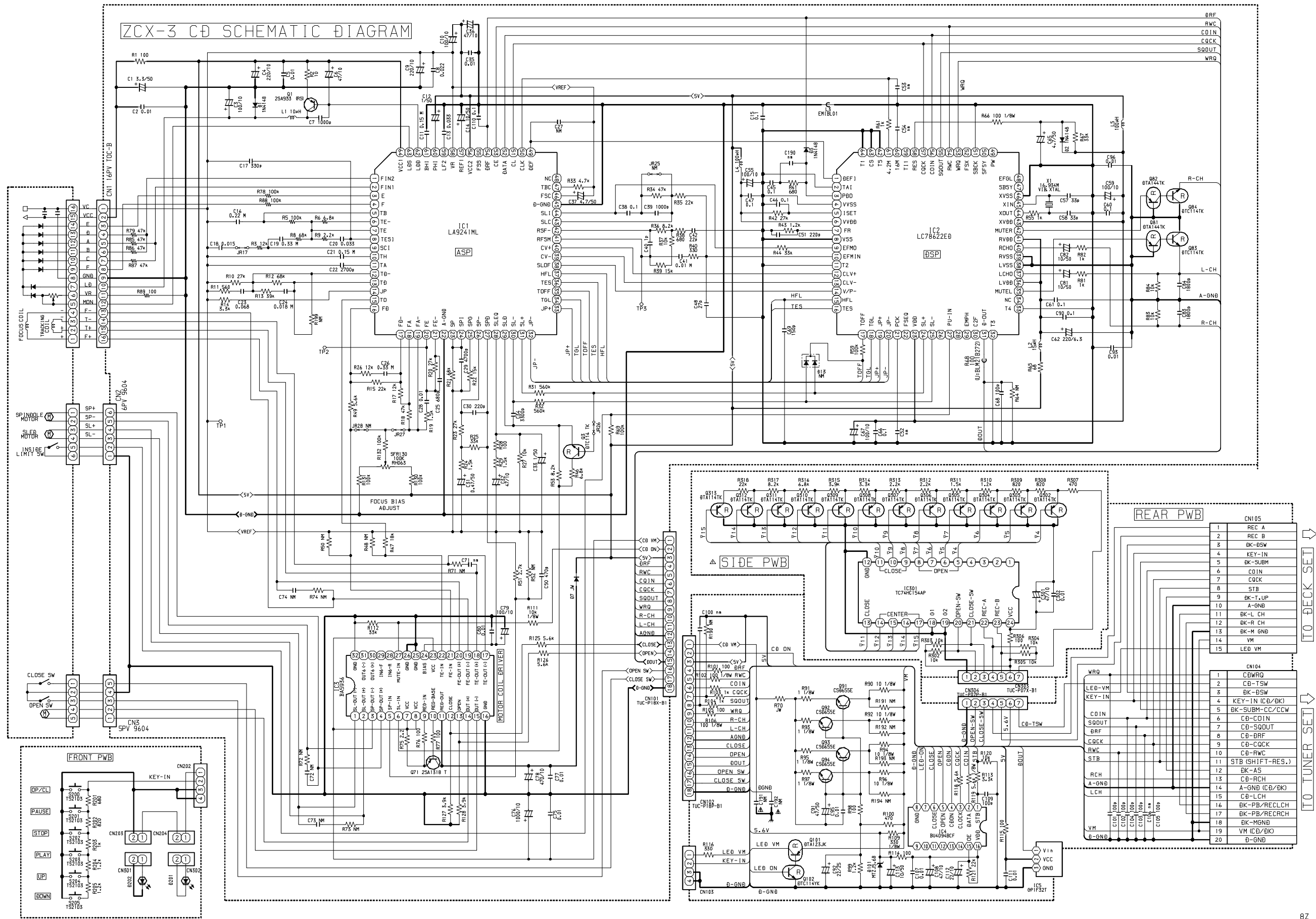
VERS ION	R383	R384	R385	CN205	CN704	CN705
EZ	1K	1K (1/8W)	1K (1/8W)	16P	16P	16P
K. U. B. LH	NM	NM	NM	14P	14P	13P

SCHEMATIC DIAGRAM (TU/M) 82 CF3 601 01

SCHEMATIC DIAGRAM – 4 (TUNER: ZZA-1<TX-LM98/99MK2>)



SCHEMATIC DIAGRAM - 6 (MAIN) <DX-LM99MK2>



B.C.M.W.
CD
8Z CX3 601 01

ZCL-3

99 04 26

アイワ株式会社 〒110-8710 東京都台東区池之端1-2-11 ☎03(3827)3111 (代表)
AIWA CO.,LTD. 2-11, IKENOHATA 1-CHOME, TAITO-KU, TOKYO 110, JAPAN TEL:03 (3827) 3111