

# SERVICE MANUAL

COMPACT DISC  
STEREO SYSTEM

BASIC TAPE MECHANISM: 2ZM-1 YR12NC  
BASIC CD MECHANISM: 3ZG-3 E10NC

SYSTEM	REMOTE CONTROLLER
XR-MK111	RC-ZAT05

- This Service Manual contains information about the difference between XR-MK111(HC) and XR-MK111(HR). If requiring other information, see Service Manual of XR-MK111(HR), (S/M Code No. 09-00A-432-8R1).

# SPECIFICATIONS

## <FM Tuner section>

<b>Tuning range</b>	87.5 MHz to 108 MHz
<b>Usable sensitivity(IHF)</b>	13.2 dBf
<b>Antenna terminals</b>	75 ohms (unbalanced)

## <AM Tuner section>

<b>Tuning range</b>	531 kHz to 1602 kHz (9 kHz step) 530 kHz to 1710 kHz (10 kHz step)
<b>Usable sensitivity</b>	350 uV/m
<b>Antenna</b>	Loop antenna

## <Amplifier section>

<b>Power output</b>	Rated: 12 W + 12 W (8 ohms, T.H.D. 1%, 1 kHz) Reference: 15 W + 15 W (8 ohms, T.H.D. 10%, 1 kHz) 0.07 % (7.5 W, 1 kHz, 8 ohms, DIN AUDIO)
<b>Total harmonic distortion</b>	VIDEO/AUX: 0.4 V VIDEO OUT: 1.0 Vp-p (75 ohms) LINE OUT: 0.4 V (47 kohms load) SUB WOOFER: 1.0 V SPEAKERS: accept speakers of 8 ohms or more PHONES (stereo minijack): accepts headphones of 32 ohms or more
<b>Inputs</b>	
<b>Outputs</b>	

## <Cassette deck section>

<b>Track format</b>	4 tracks, 2 channels stereo
<b>Frequency response</b>	Normal tape: 50 Hz – 15000 Hz
<b>Signal-to-noise ratio</b>	50 dB
<b>Recording system</b>	AC bias
<b>Heads</b>	Recording/Playback head x 1 Erase head x 1

## <Compact disc player section>

<b>Laser</b>	Semiconductor laser ( $\lambda = 780 \text{ nm}$ )
<b>D-A converter</b>	1 bit dual
<b>Signal-to-noise ratio</b>	75 dB (1 kHz, 0 dB)
<b>Harmonic distortion</b>	0.1 % (1 kHz, 0 dB)
<b>Wow and flutter</b>	Unmeasurable
<b>Video signal</b>	NTSC/PAL color format (selectable)
<b>Video data</b>	MPEG 1
<b>Audio data</b>	MPEG 1, LAYER 2

## <Speaker system>

<b>Cabinet type</b>	2 way, bass reflex
<b>Speaker</b>	Woofer: 120 mm (4 <sup>3</sup> / <sub>4</sub> in) cone type Tweeter: 20 mm ( <sup>13</sup> / <sub>16</sub> in) ceramic type 8 ohms
<b>Impedance</b>	8 ohms
<b>Output sound pressure level</b>	87 dB/W/m
<b>Dimensions (W x H x D)</b>	150 x 256 x 210 mm (6 x 10 <sup>1</sup> / <sub>8</sub> x 8 <sup>3</sup> / <sub>8</sub> in.)
<b>Weight</b>	1.4 kg (3 lbs 1 oz)

## <General>

<b>Power requirements</b>	AC: 120 V/ 220 V - 240 V, Switchable 50/60 Hz
<b>Power consumption</b>	45 W
<b>Dimensions of main unit (W x H x D)</b>	168 x 256 x 255 mm (6 <sup>5</sup> / <sub>8</sub> x 10 <sup>1</sup> / <sub>8</sub> x 10 <sup>1</sup> / <sub>8</sub> in)
<b>Weight of main unit</b>	3.5 kg (7 lbs 11 oz.)
<b>Standby power consumption</b>	If the power-economizing mode is on: 1.0 W If the power-economizing mode is off: 10 W

- Design and specifications are subject to change without notice.

## ACCESSORIES / PACKAGE LIST

REF. NO.	PART NO.	KANRI NO.	DESCRIPTION
1	8A-CG9-902-010		IB, H (EC-K) -IN
2	8A-CL9-157-010		PLATE, NAME
3	87-043-115-010		ANT, FEEDER FM
4	87-A80-167-010		CORD, PIN 1PY 150CM
5	87-A90-030-010		ANT, LOOP AM-NC C
△ 6	87-A91-015-010		PLUG, CONVERSION JT-0475A
7	8Z-CG8-952-010		RC UNIT, RC-ZAT05

# ELECTRICAL MAIN PARTS LIST

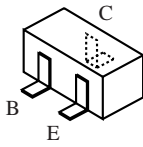
REF. NO.	PART NO.	KANRI NO.	DESCRIPTION	REF. NO.	PART NO.	KANRI NO.	DESCRIPTION
IC							
	87-A20-547-010		C-IC, CXA1992AR		87-017-024-040		C-DIODE, DA204K
	87-A20-919-040		C-IC, BA5915FP		87-A40-180-040		C-DIODE, SB07-015C
	87-A20-917-010		C-IC, CXD2540Q-1/2		87-001-731-080		ZENER, HZS6C2L
	8A-CG9-670-010		C-IC, UPD78016CFG-584-AB8		87-A40-739-080		ZENER, UZ2.7BSA
	87-017-760-080		IC, M51943BML	MAIN C.B			
	8A-CG9-685-010		C-IC, M38B57MCH-P257FP	C101	87-016-495-000		CAP, E 3300-25 M SMG
	87-A20-602-040		C-IC, M5291FP	C102	87-012-286-080		CAP, U 0.01-25
	87-017-889-010		IC, NJM4558LD	C104	87-A10-011-090		CAP, E 2200-25 SMG
	87-A20-925-040		C-IC, BA05FP	C105	87-A10-039-080		C-CAP, U 470P-50 J CH
	87-A20-905-040		C-IC, BA033FP	C106	87-010-408-080		CAP, ELECT 47-50V
	87-A21-831-010		IC, SPS-442-1-F1	C107	87-010-384-080		CAP, ELECT 100-25V
	87-001-982-010		IC, TA7291S	C108	87-010-381-080		CAP, ELECT 330-16V
	87-A20-920-010		C-IC, CL680-D1	C109	87-010-260-080		CAP, ELECT 47-25V
	87-070-391-040		IC, BA4558F	C110	87-010-260-080		CAP, ELECT 47-25V
	87-A20-921-040		C-IC, SN74LVU04APW	C111	87-010-247-080		CAP, ELECT 100-50V
	87-A20-962-040		C-IC, MSM54V16258B/BSL	C112	87-010-263-080		CAP, ELECT 100-10V
	84-ZG1-695-040		C-IC, LHSV2RN1	C113	87-010-403-080		CAP, ELECT 3.3-50V
	87-A20-975-040		C-IC, SN74LV74APW	C114	87-010-374-080		CAP, ELECT 47-10V
	87-A21-520-040		C-IC, M61509FP	C115	87-A11-007-080		CAP, M 0.047-50 J DE
	87-A20-918-040		C-IC, SMS878AM	C116	87-A11-007-080		CAP, M 0.047-50 J DE
	87-A20-974-040		C-IC, LC74781M-9017	C122	87-010-260-080		CAP, ELECT 47-25V
	87-070-127-110		IC, LC72131D	C123	87-010-260-080		CAP, ELECT 47-25V
	87-A20-913-010		IC, LA1837NL	C131	87-A12-317-080		C-CAP, U 0.1-50 Z F
	87-020-454-010		IC, DN6851	C132	87-A12-317-080		C-CAP, U 0.1-50 Z F
				C200	87-012-286-080		CAP, U 0.01-25
TRANSISTOR				C201	87-012-286-080		CAP, U 0.01-25
	89-111-625-080		TR, 2SA1162 (0.15W)	C207	87-010-546-080		CAP, ELECT 0.33-50V
	89-213-702-010		TR, 2SB1370 (1.8W)	C208	87-010-546-080		CAP, ELECT 0.33-50V
	87-026-610-080		TR, KTC3198GR	C209	87-012-282-080		CAP, U 4700P-50
	87-A30-432-040		C-TR, DTC124XKA	C210	87-012-282-080		CAP, U 4700P-50
	89-327-125-080		CHIP TR, 2SC2712GR	C211	87-010-403-080		CAP, ELECT 3.3-50V
	87-A30-196-080		TR, 2SC4115SRS	C212	87-010-403-080		CAP, ELECT 3.3-50V
	87-A30-287-040		C-TR, DTC114TKA	C213	87-010-260-080		CAP, ELECT 47-25V
	87-A30-515-080		TR, 2SA19790/Y	C214	87-010-260-080		CAP, ELECT 47-25V
	87-A30-198-080		TR, KTC3199GR	C217	87-010-959-080		CHIP CAP, U 0.056-16F
	87-A30-450-040		C-TR, DTA124XKA	C218	87-010-959-080		CHIP CAP, U 0.056-16F
	87-A30-427-040		C-TR, DTC114EKA	C219	87-012-286-080		CAP, U 0.01-25
	87-A30-197-080		TR, KTA1267GR	C220	87-012-286-080		CAP, U 0.01-25
	87-026-219-080		TR, DTA144ES (0.3W)	C227	87-010-260-080		CAP, ELECT 47-25V
	87-A30-127-010		TR, 2SD2478	C229	87-012-199-080		CAP 220P
	87-A30-126-010		TR, 2SB1616	C230	87-012-199-080		CAP 220P
	89-406-555-080		TR, 2SD655 (0.5W)	C261	87-012-286-080		CAP, U 0.01-25
	87-026-609-080		TR, KTA1266GR	C273	87-A12-319-080		C-CAP, U 0.1-25 K B
	87-A30-117-010		TR, 2SA1357	C303	87-012-273-080		C-CAP, U 820P-50 B
	87-026-245-080		TR, DTC114ES	C304	87-012-273-080		C-CAP, U 820P-50 B
	89-112-965-080		TR, 2SA1296 (0.75W)	C307	87-010-263-080		CAP, ELECT 100-10V
	87-A30-090-080		FET, 2SK2541	C308	87-010-263-080		CAP, ELECT 100-10V
	89-111-624-080		TR, 2SA1162Y	C311	87-010-758-080		C-CAP, U 0.068-25F
	87-A30-076-080		C-TR, 2SC3052F	C312	87-010-758-080		C-CAP, U 0.068-25F
	87-A30-074-080		C-TR, RT1P 141C	C313	87-012-280-080		CAP, U 3300P-50
	87-026-502-080		DTC144TS	C314	87-012-280-080		CAP, U 3300P-50
	87-A30-436-040		C-TR, DTC144TKA	C315	87-010-374-080		CAP, ELECT 47-10V
	87-A30-257-080		C-TR, 2SD1306E	C317	87-010-546-080		CAP, ELECT 0.33-50V
	87-A30-075-080		C-TR, 2SA1235F	C318	87-010-546-080		CAP, ELECT 0.33-50V
	87-A30-234-080		TR, CSC4115BC	C320	87-010-401-080		CAP, ELECT 1-50V
	89-327-143-080		2SC2714	C321	87-010-405-080		CAP, ELECT 10-50V
	87-A30-072-080		RT1P144C	C340	87-012-199-080		CAP 220P
	87-026-463-080		TR, 2SA933SRS	C349	87-012-195-080		C-CAP, U 100P-50CH
				C350	87-012-195-080		C-CAP, U 100P-50CH
				C361	87-010-374-080		CAP, ELECT 47-10V
DIODE				C362	87-010-401-080		CAP, ELECT 1-50V
	87-020-027-080		CHIP-DIODE 1SS184	C386	87-012-286-080		CAP, U 0.01-25
	87-A40-454-080		DIODE, 1N5393 GW	C393	87-012-274-080		CHIP CAP, U 1000P-50B
	87-020-465-080		DIODE, 1SS133 (110MA)	C394	87-012-274-080		CHIP CAP, U 1000P-50B
	87-A40-553-080		DIODE, 1N4003 LES	C401	87-010-401-080		CAP, ELECT 1-50V
	87-A40-781-080		ZENER, UZ36BSA	C402	87-010-401-080		CAP, ELECT 1-50V
				C403	87-012-193-080		C-CAP, U 82P-50 CH
	87-A40-764-080		ZENER, UZ10BSC	C404	87-012-193-080		C-CAP, U 82P-50 CH

REF. NO.	PART NO.	KANRI NO.	DESCRIPTION	REF. NO.	PART NO.	KANRI NO.	DESCRIPTION
C405	87-012-284-080		CAP, U 6800P-50	R224	87-A00-258-080		RES,M/F 0.22-1W J
C406	87-012-284-080		CAP, U 6800P-50	R249	87-A00-258-080		RES,M/F 0.22-1W J
C407	87-010-784-080		C-CAP,U 0.012-25 B	R250	87-A00-258-080		RES,M/F 0.22-1W J
C408	87-010-784-080		C-CAP,U 0.012-25 B				
C451	87-010-787-080		CAP, U 0.022-25				
C452	87-010-382-080		CAP, ELECT 22-25V				
C453	87-012-279-080		C-CAP,U 2700P-50 B	C302	87-012-286-080		CAP, U 0.01-25
C454	87-012-279-080		C-CAP,U 2700P-50 B	C304	87-010-405-040		CAP,E 10-50
C455	87-012-279-080		C-CAP,U 2700P-50 B	C305	87-A10-797-040		CAP,E 47-35 M 5L SRM
C456	87-012-286-080		CAP, U 0.01-25	C307	87-010-421-040		CAP,E 4.7-50 5L
				C308	87-010-421-040		CAP,E 4.7-50 5L
C457	87-A10-772-080		CAP,M 5600P-50 J				
C458	87-012-274-080		CHIP CAP,U 1000P-50B	C309	87-010-787-080		CAP, U 0.022-25
C459	87-012-271-080		CAP, U 560P-50	C313	87-010-378-040		CAP,E 10-16
C461	87-012-269-080		C-CAP,U 390P-50 B	C314	87-A10-189-040		CAP,E 220-10
C462	87-012-269-080		C-CAP,U 390P-50 B	C315	87-A10-025-080		C-CAP,U 0.22-16Z F
				C316	87-012-286-080		CAP, U 0.01-25
C601	87-012-276-080		CAP, CHIP SS 1500 PBK				
C602	87-012-276-080		CAP, CHIP SS 1500 PBK	C317	87-010-787-080		CAP, U 0.022-25
C603	87-012-195-080		C-CAP,U 100P-50CH	C318	87-012-191-080		CHIP CAP 68 PF
C604	87-012-199-080		CAP 220P	C319	87-012-191-080		CHIP CAP 68 PF
C609	87-012-287-080		C-CAP,U 0.015-25 F	C320	87-012-191-080		CHIP CAP 68 PF
				C321	87-012-191-080		CHIP CAP 68 PF
C610	87-010-785-080		C-CAP,U0.015-25BK				
C611	87-010-545-080		CAP, ELECT 0.22-50V	C322	87-012-191-080		CHIP CAP 68 PF
C612	87-010-545-080		CAP, ELECT 0.22-50V	C323	87-012-191-080		CHIP CAP 68 PF
C613	87-010-545-080		CAP, ELECT 0.22-50V	C324	87-012-191-080		CHIP CAP 68 PF
C614	87-010-545-080		CAP, ELECT 0.22-50V	C325	87-012-191-080		CHIP CAP 68 PF
				C326	87-012-191-080		CHIP CAP 68 PF
C615	87-012-172-080		CAPACITOR CHIP U 10P CH				
C616	87-010-408-080		CAP, ELECT 47-50V	C327	87-012-191-080		CHIP CAP 68 PF
C617	87-010-408-080		CAP, ELECT 47-50V	C328	87-012-191-080		CHIP CAP 68 PF
C619	87-010-401-080		CAP, ELECT 1-50V	C329	87-010-787-080		CAP, U 0.022-25
C620	87-010-401-080		CAP, ELECT 1-50V	C330	87-012-188-080		C-CAP,U 47P-50 CH
				C331	87-012-176-080		CAP 15P
C629	87-012-274-080		CHIP CAP,U 1000P-50B				
C630	87-012-274-080		CHIP CAP,U 1000P-50B	C333	87-010-494-040		CAP,E 1-50 GAS
C631	87-012-286-080		CAP, U 0.01-25	C335	87-012-184-080		C-CAP,U 33P-50 CH
C697	87-012-286-080		CAP, U 0.01-25	C338	87-012-286-080		CAP, U 0.01-25
C698	87-012-286-080		CAP, U 0.01-25	C339	87-012-286-080		CAP, U 0.01-25
				C340	87-012-286-080		CAP, U 0.01-25
C705	87-012-282-080		CAP, U 4700P-50				
C710	87-010-403-080		CAP, ELECT 3.3-50V	C341	87-010-263-040		CAP,E 100-10
C711	87-010-403-080		CAP, ELECT 3.3-50V	C352	87-010-757-080		C.CAP,U 0.047-25F
C712	87-010-403-080		CAP, ELECT 3.3-50V	C395	87-012-197-080		C-CAP,U 150P-50 CH
C713	87-010-403-080		CAP, ELECT 3.3-50V	C397	87-012-197-080		C-CAP,U 150P-50 CH
				C398	87-012-195-080		C-CAP,U 100P-50CH
C714	87-A10-249-080		C-CAP,U 1-10 ZF				
C717	87-010-405-080		CAP,E 10-50 M 11L SME	C399	87-012-180-080		C-CAP,U 22P-50 CH
C718	87-010-785-080		C-CAP,U 0.015-25 K B GRM	C400	87-012-197-080		C-CAP,U 150P-50 CH
C719	87-010-785-080		C-CAP,U 0.015-25 K B GRM	CN4	87-099-032-010		CONN,15P 6216 H
CN202	87-099-719-010		CONN,30P TYK-B(X)	CN301	87-099-720-010		CONN,30P TYK-B(P)
				CN302	87-CL4-704-010		CONN ASSY 9P DECK
CN351	87-A60-624-010		CONN,7P V 2MM JMT				
CN702	87-099-570-010		CONN,13P TUC-P13P-B1	FB101	83-XM1-617-080		C-COIL,BK2125HM601
CON351	88-CL4-701-010		CONN ASSY,7P RPEH	FFC302	8A-CL9-671-010		F-CABLE,9P 2.5
FB101	87-A90-896-080		F-BEAD, 035600STY7	FFC4	88-915-301-110		FF-CABLE,15P 1.25
FB102	87-A90-896-080		F-BEAD, 035600STY7	FL301	8A-CL9-682-010		FL,11-BT-179GNK
				LED301	87-A40-229-040		LED,SLR-342VR TB7 RED
FB401	83-XM1-617-080		C-COIL,BK2125HM601				
FB402	83-XM1-617-080		C-COIL,BK2125HM601	LED302	87-A40-619-040		LED,SLR-56PT-T31-W GRN
FB601	87-A90-896-080		F-BEAD, 035600STY7	LED303	87-A40-619-040		LED,SLR-56PT-T31-W GRN
FB602	83-XM1-617-080		C-COIL,BK2125HM601	LED304	87-A40-619-040		LED,SLR-56PT-T31-W GRN
FB604	83-XM1-617-080		C-COIL,BK2125HM601	LED305	87-A40-619-040		LED,SLR-56PT-T31-W GRN
				△ PR301	87-026-689-080		PROTECTOR,1A 60V 491
FB605	83-XM1-617-080		C-COIL,BK2125HM601				
FB606	83-XM1-617-080		C-COIL,BK2125HM601	S301	87-A90-095-080		SW,TACT EVQ11G04M
J231	87-A60-420-010		JACK,3.5 ST (MSC)	S302	87-A90-095-080		SW,TACT EVQ11G04M
J241	87-A60-217-010		TERMINAL,SPKR 4P	S303	87-A90-095-080		SW,TACT EVQ11G04M
J601	87-A60-881-010		JACK,PIN 2P MSP 242V05 PBSN	S304	87-A90-095-080		SW,TACT EVQ11G04M
				S305	87-A90-095-080		SW,TACT EVQ11G04M
J602	87-A60-881-010		JACK,PIN 2P MSP 242V05 PBSN				
J603	87-099-801-010		JACK,PIN 1P BLK	S306	87-A90-095-080		SW,TACT EVQ11G04M
JW203	87-A90-896-080		F-BEAD, 035600STY7	S307	87-A90-095-080		SW,TACT EVQ11G04M
L201	87-005-366-010		COIL, 1UH	S308	87-A90-095-080		SW,TACT EVQ11G04M
L202	87-005-366-010		COIL, 1UH	S309	87-A90-095-080		SW,TACT EVQ11G04M
				S310	87-A90-095-080		SW,TACT EVQ11G04M
L451	87-007-342-010		COIL,OSC 85K BIAS				
PN101	87-A90-510-010		HLDL,WIRE 2.5-9P	S311	87-A90-095-080		SW,TACT EVQ11G04M
△ PR201	87-A90-473-080		PROTECTOR,3.5A 491SERIES 60V	S312	87-A90-095-080		SW,TACT EVQ11G04M
△ PR202	87-A90-473-080		PROTECTOR,3.5A 491SERIES 60V	S313	87-A90-095-080		SW,TACT EVQ11G04M
R223	87-A00-258-080		RES,M/F 0.22-1W J	S314	87-A90-095-080		SW,TACT EVQ11G04M

REF. NO.	PART NO.	KANRI NO.	DESCRIPTION	REF. NO.	PART NO.	KANRI NO.	DESCRIPTION
S315	87-A90-095-080	SW, TACT	EVQ11G04M	C214	87-010-759-080		C-CAP, U, 0.1-25F
S316	87-A90-095-080	SW, TACT	EVQ11G04M	C301	87-016-251-040		CAP, E 220-16 SMG
S317	87-A90-095-080	SW, TACT	EVQ11G04M	C302	87-A10-039-080		C-CAP, U 470P-50 J CH
S318	87-A90-095-080	SW, TACT	EVQ11G04M	C303	87-012-274-080		CHIP CAP, U 1000P-50B
S320	87-A90-095-080	SW, TACT	EVQ11G04M	C304	87-010-384-040		CAP, E 100-25 SME
S351	87-A91-690-010	SW, RTRY	JOG RE0121PVB25FINB	C305	87-010-383-040		CAP, E 33-25 SME
X301	87-030-375-080	VIB, CF	4.19MG200	C306	87-010-112-040		CAP, E 100-16
VCD C.B				C307	87-010-759-080		C-CAP, U, 0.1-25F
C101	87-012-278-080		C-CAP, U 2200P-50 B	C308	87-010-263-040		CAP, E 100-10
C102	87-A12-319-080		C-CAP, U 0.1-25 K B	C309	87-010-759-080		C-CAP, U, 0.1-25F
C103	87-A12-319-080		C-CAP, U 0.1-25 K B	C310	87-010-263-040		CAP, E 100-10
C104	87-A12-319-080		C-CAP, U 0.1-25 K B	C311	87-010-759-080		C-CAP, U, 0.1-25F
C105	87-010-404-040		CAP, E 4.7-50 SME	C312	87-012-274-080		CHIP CAP, U 1000P-50B
C106	87-A11-070-080		C-CAP, U 0.033-16 K B	C320	87-A10-025-080		C-CAP, U 0.22-16Z F
C107	87-012-286-080		CAP, U 0.01-25	C321	87-A10-025-080		C-CAP, U 0.22-16Z F
C108	87-010-401-040		CAP, E 1-50 SME	C322	87-A10-025-080		C-CAP, U 0.22-16Z F
C109	87-010-382-040		CAP, E 22-25 SME	C401	87-010-759-080		C-CAP, U, 0.1-25F
C110	87-010-785-080		C-CAP, U 0.015-25BK	C402	87-010-112-040		CAP, E 100-16
C111	87-010-263-040		CAP, E 100-10	C403	87-010-759-080		C-CAP, U, 0.1-25F
C112	87-012-286-080		CAP, U 0.01-25	C404	87-010-759-080		C-CAP, U, 0.1-25F
C113	87-A11-070-080		C-CAP, U 0.033-16 K B	C433	87-010-759-080		C-CAP, U, 0.1-25F
C114	87-A11-070-080		C-CAP, U 0.033-16 K B	C434	87-012-286-080		CAP, U 0.01-25
C115	87-016-114-080		C-CAP, U 0.01-25 J B GRM	C435	87-010-263-040		CAP, E 100-10
C116	87-012-269-080		C-CAP, U 390P-50 B	C501	87-012-286-080		CAP, U 0.01-25
C117	87-012-197-080		C-CAP, U 150P-50 CH	C502	87-012-286-080		CAP, U 0.01-25
C118	87-010-401-040		CAP, E 1-50 SME	C503	87-012-286-080		CAP, U 0.01-25
C119	87-012-176-080		CAP 15P	C504	87-012-172-080		CAPACITOR CHIP U 10P CH
C120	87-A10-504-080		C-CAP, U 0.047-16 K B	C505	87-012-172-080		CAPACITOR CHIP U 10P CH
C121	87-A10-504-080		C-CAP, U 0.047-16 K B	C506	87-012-286-080		CAP, U 0.01-25
C122	87-012-162-080		C-CAP, U 1P-50 C CH	C508	87-010-263-040		CAP, E 100-10
C123	87-A12-319-080		C-CAP, U 0.1-25 K B	C509	87-010-759-080		C-CAP, U, 0.1-25F
C125	87-010-787-080		CAP, U 0.022-25	C510	87-010-263-040		CAP, E 100-10
C126	87-A12-319-080		C-CAP, U 0.1-25 K B	C511	87-010-759-080		C-CAP, U, 0.1-25F
C127	87-010-263-040		CAP, E 100-10	C512	87-012-286-080		CAP, U 0.01-25
C130	87-010-263-040		CAP, E 100-10	C513	87-012-286-080		CAP, U 0.01-25
C131	87-010-263-040		CAP, E 100-10	C514	87-012-286-080		CAP, U 0.01-25
C132	87-012-274-080		CHIP CAP, U 1000P-50B	C517	87-012-168-080		C-CAP, U 6P-50 CH
C133	87-010-263-040		CAP, E 100-10	C518	87-012-195-080		C-CAP, U 100P-50CH
C134	87-010-759-080		C-CAP, U, 0.1-25F	C519	87-012-335-080		C-CAP, U 270P-50 SL
C135	87-010-759-080		C-CAP, U, 0.1-25F	C520	87-012-336-080		CAP, CHIP SS 3300 SL
C136	87-010-759-080		C-CAP, U, 0.1-25F	C521	87-012-197-080		C-CAP, U 150P-50 CH
C137	87-010-759-080		C-CAP, U, 0.1-25F	C523	87-012-286-080		CAP, U 0.01-25
C138	87-012-280-080		CAP, U 3300P-50	C524	87-012-286-080		CAP, U 0.01-25
C139	87-012-286-080		CAP, U 0.01-25	C525	87-012-286-080		CAP, U 0.01-25
C140	87-010-112-040		CAP, E 100-16	C526	87-012-286-080		CAP, U 0.01-25
C141	87-010-759-080		C-CAP, U, 0.1-25F	C527	87-012-286-080		CAP, U 0.01-25
C142	87-A12-319-080		C-CAP, U 0.1-25 K B	C528	87-012-286-080		CAP, U 0.01-25
C143	87-012-286-080		C-CAP, U 0.01-25 K B	C529	87-012-286-080		CAP, U 0.01-25
C151	87-010-263-040		CAP, E 100-10	C530	87-012-286-080		CAP, U 0.01-25
C152	87-012-286-080		CAP, U 0.01-25	C531	87-012-286-080		CAP, U 0.01-25
C153	87-010-221-080		CAP, E 470-10 M SME	C532	87-010-374-040		CAP, E 47-10
C154	87-012-286-080		CAP, U 0.01-25	C533	87-012-286-080		CAP, U 0.01-25
C155	87-012-280-080		CAP, U 3300P-50	C534	87-010-263-040		CAP, E 100-10
C156	87-010-757-080		C. CAP, U 0.047-25F	C535	87-012-286-080		CAP, U 0.01-25
C157	87-010-757-080		C. CAP, U 0.047-25F	C536	87-010-374-040		CAP, E 47-10
C158	87-012-199-080		CAP 220P	C537	87-012-286-080		CAP, U 0.01-25
C159	87-A10-902-080		C-CAP, U 0.47-10 K B	C538	87-010-759-080		C-CAP, U, 0.1-25F
C161	87-012-279-080		C-CAP, U 2700P-50 K B GRM	C539	87-010-759-080		C-CAP, U, 0.1-25F
C162	87-012-274-080		CHIP CAP, U 1000P-50B	C540	87-010-374-040		CAP, E 47-10
C201	87-010-759-080		C-CAP, U, 0.1-25F	C541	87-012-286-080		CAP, U 0.01-25
C203	87-012-274-080		CHIP CAP, U 1000P-50B	C542	87-012-195-080		C-CAP, U 100P-50CH
C206	87-012-195-080		C-CAP, U 100P-50CH	C543	87-012-274-080		CHIP CAP, U 1000P-50B
C207	87-012-195-080		C-CAP, U 100P-50CH	C544	87-012-286-080		CAP, U 0.01-25
C208	87-012-195-080		C-CAP, U 100P-50CH	C546	87-012-286-080		CAP, U 0.01-25
C209	87-012-195-080		C-CAP, U 100P-50CH	C547	87-012-199-080		CAP 220P
C210	87-010-759-080		C-CAP, U, 0.1-25F	C548	87-012-195-080		C-CAP, U 100P-50CH
C211	87-010-263-040		CAP, E 100-10	C549	87-012-199-080		CAP 220P
C213	87-012-286-080		CAP, U 0.01-25	C550	87-010-759-080		C-CAP, U, 0.1-25F
				C551	87-012-195-080		C-CAP, U 100P-50CH
				C555	87-012-336-080		CAP, CHIP SS 3300 SL

REF. NO.	PART NO.	KANRI NO.	DESCRIPTION	REF. NO.	PART NO.	KANRI NO.	DESCRIPTION
C560	87-012-195-080		C-CAP,U 100P-50CH	R187	87-022-237-080		C-RES,U 8.2K-1/16W F
C561	87-012-195-080		C-CAP,U 100P-50CH	R190	87-022-221-080		C-RES,U 1.8K-1/16W F
C563	87-010-759-080		C-CAP,U, 0.1-25F	R191	87-022-221-080		C-RES,U 1.8K-1/16W F
C564	87-012-197-080		C-CAP,U 150P-50 CH	R193	87-022-221-080		C-RES,U 1.8K-1/16W F
C565	87-012-196-080		C-CAP,U 120P-50 CH	R194	87-022-221-080		C-RES,U 1.8K-1/16W F
C567	87-012-196-080		C-CAP,U 120P-50 CH	R507	87-022-222-080		C-RES,U 2.0K-1/16W F
C620	87-012-178-080		C-CAP,U 18P-50 CH	S201	87-A90-300-010		SW,SL SSAA 1-3 B
C621	87-012-178-080		C-CAP,U 18P-50 CH	X201	87-A70-124-080		VIB,CER 8.0MHZ
C622	87-A10-025-080		C-CAP,U 0.22-16Z F	X501	87-A70-125-080		VIB,XTAL 27MHZ 50PPM
C624	87-012-191-080		CHIP CAP 68 PF	X601	87-030-270-080		VIB,XTAL 16.9344MHZ
C625	87-012-274-080		CHIP CAP,U 1000P-50B				
C626	87-A10-025-080		C-CAP,U 0.22-16Z F	RELAY C.B			
C631	87-010-759-080		C-CAP,U, 0.1-25F				
C637	87-010-759-080		C-CAP,U, 0.1-25F	CN301	88-CL4-701-010		CONN ASSY, 7P RPEH
C638	87-010-784-080		C-CAP,U 0.012-25 B				
C639	87-012-197-080		C-CAP,U 150P-50 CH	DECK C.B			
C640	87-012-180-080		C-CAP,U 22P-50 CH				
C641	87-010-759-080		C-CAP,U, 0.1-25F	CN1	87-009-352-010		CONN,9P PH H
C651	87-010-757-080		C.CAP,U 0.047-25F	CRD1	82-ZM1-625-010		RBN-CORD,4P-55
C671	87-010-073-040		CAP,E 3.3-50 5L	M1	87-045-347-010		MOT,SHU2L 70
C672	87-010-073-040		CAP,E 3.3-50 5L	SFR1	87-024-581-010		SFR,3.3K DIA6V K0A
C673	87-012-274-080		CHIP CAP,U 1000P-50B	SOL1	82-ZM3-627-010		SOL ASSY,27 SO
C674	87-012-274-080		CHIP CAP,U 1000P-50B				
C675	87-012-274-080		CHIP CAP,U 1000P-50B	SW2	87-036-110-010		PUSH SWITCH
C676	87-012-274-080		CHIP CAP,U 1000P-50B	SW3	87-036-110-010		PUSH SWITCH
C681	87-010-759-080		C-CAP,U, 0.1-25F	SW4	87-036-110-010		PUSH SWITCH
C682	87-A10-025-080		C-CAP,U 0.22-16Z F	SW5	87-036-110-010		PUSH SWITCH
C700	87-010-759-080		C-CAP,U, 0.1-25F	SW6	87-A90-248-010		SW,MICRO ESE11SH2CXQ
C702	87-010-759-080		C-CAP,U, 0.1-25F	CD LOAD C.B			
C722	87-010-371-040		CAP,E 470-6.3				
C749	87-010-401-040		CAP,E 1-50 SME	CN1	87-099-210-010		CONN,5P 6216 H
C751	87-012-196-080		C-CAP,U 120P-50 CH	M1	87-045-305-010		MOTOR, RF-500TB DC-5V (2MA)
C752	87-A10-463-080		C-CAP,U 0.47-10 Z F	SW1	87-036-110-010		PUSH SWITCH
C754	87-012-286-080		CAP, U 0.01-25	SW2	87-036-110-010		PUSH SWITCH
C756	87-012-286-080		CAP, U 0.01-25	CD DRIVE C.B			
C757	87-012-182-080		C-CAP,U 27P-50 CH				
C758	87-012-182-080		C-CAP,U 27P-50 CH	M20	87-045-358-010		MOT,RF-310TA 43
CN101	87-A60-429-010		CONN,16P H TOC-A	M21	87-045-356-010		MOT,RF-310TA 30
CN102	87-A60-131-010		CONN,6P V FE	PIN3	87-A60-086-010		CONN,6P H 6216
CN401	87-099-210-010		CONN,5P 6216 H	SW1	87-A90-042-010		SW,LEAF MSW-17310MVP0
CN403	87-099-032-010		CONN,15P 6216 H				
FB501	83-XM1-617-080		C-COIL,BK2125HM601				
FB901	83-XM1-617-080		C-COIL,BK2125HM601				
FB904	83-XM1-617-080		C-COIL,BK2125HM601				
FB906	83-XM1-617-080		C-COIL,BK2125HM601				
FB907	83-XM1-617-080		C-COIL,BK2125HM601				
FB909	83-XM1-617-080		C-COIL,BK2125HM601				
FFC101	88-CL4-704-010		FF-CABLE, 16P 1.0				
FFC102	88-906-131-110		FF-CABLE,6P 1.25				
FFC401	88-905-151-210		FF-CABLE,5P 1.25 150MM				
J501	87-A61-472-010		JACK,PIN 1P YELLOW				
L101	87-005-196-080		COIL,10UH				
L301	87-A50-095-010		COIL,68UH RCR875D				
L302	87-005-426-080		COIL,3.3UH K FLR50				
L502	87-005-204-080		COIL,47UH				
L503	87-005-189-080		COIL 2.7UH				
L504	87-005-187-080		COIL,1.8UH				
L505	87-005-204-080		COIL,47UH				
L506	87-005-204-080		COIL,47UH				
L507	87-005-204-080		COIL,47UH				
△ PR301	87-A90-757-080		PROTECTOR,0.75A 60V 491				
R130	87-022-237-080		C-RES,U 8.2K-1/16W F				
R131	87-022-237-080		C-RES,U 8.2K-1/16W F				
R132	87-022-237-080		C-RES,U 8.2K-1/16W F				
R133	87-022-237-080		C-RES,U 8.2K-1/16W F				
R134	87-022-237-080		C-RES,U 8.2K-1/16W F				
R135	87-022-237-080		C-RES,U 8.2K-1/16W F				
R184	87-022-237-080		C-RES,U 8.2K-1/16W F				
R185	87-022-237-080		C-RES,U 8.2K-1/16W F				
R186	87-022-237-080		C-RES,U 8.2K-1/16W F				

# TRANSISTOR ILLUSTRATION

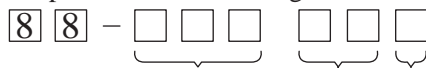


DTA124XKA  
 DTC124XKA  
 DTC144TKA  
 DTC114TKA  
 DTC114EKA

## ○チップ抵抗部品コード/CHIP RESISTOR PART CODE

チップ抵抗部品コードの成り立ち

### Chip Resistor Part Coding



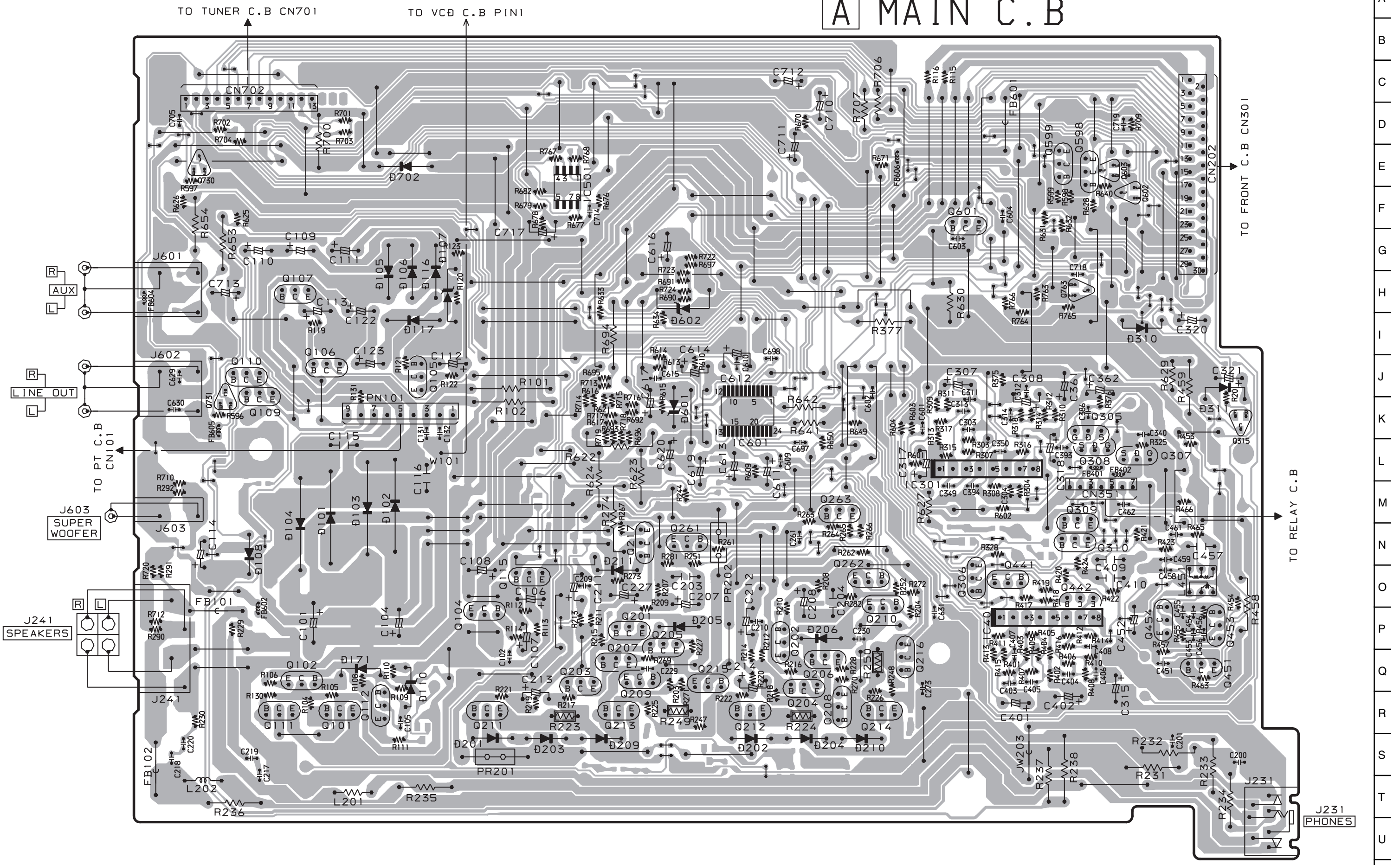
A  
 抵抗部品コード  
 Resistor Code

桁表示  
 Figure  
 抵抗値  
 Value of resistor

## チップ抵抗 Chip resistor

容量 Wattage	種類 Type	許容誤差 Tolerance	記号 Symbol	寸法/Dimensions (mm)			抵抗コード : A Resistor Code : A	
				外形/Form	L	W		t
1/16W	1005	± 5%	CJ		1.0	0.5	0.35	104
1/16W	1608	± 5%	CJ		1.6	0.8	0.45	108
1/10W	2125	± 5%	CJ		2	1.25	0.45	118
1/8W	3216	± 5%	CJ		3.2	1.6	0.55	128

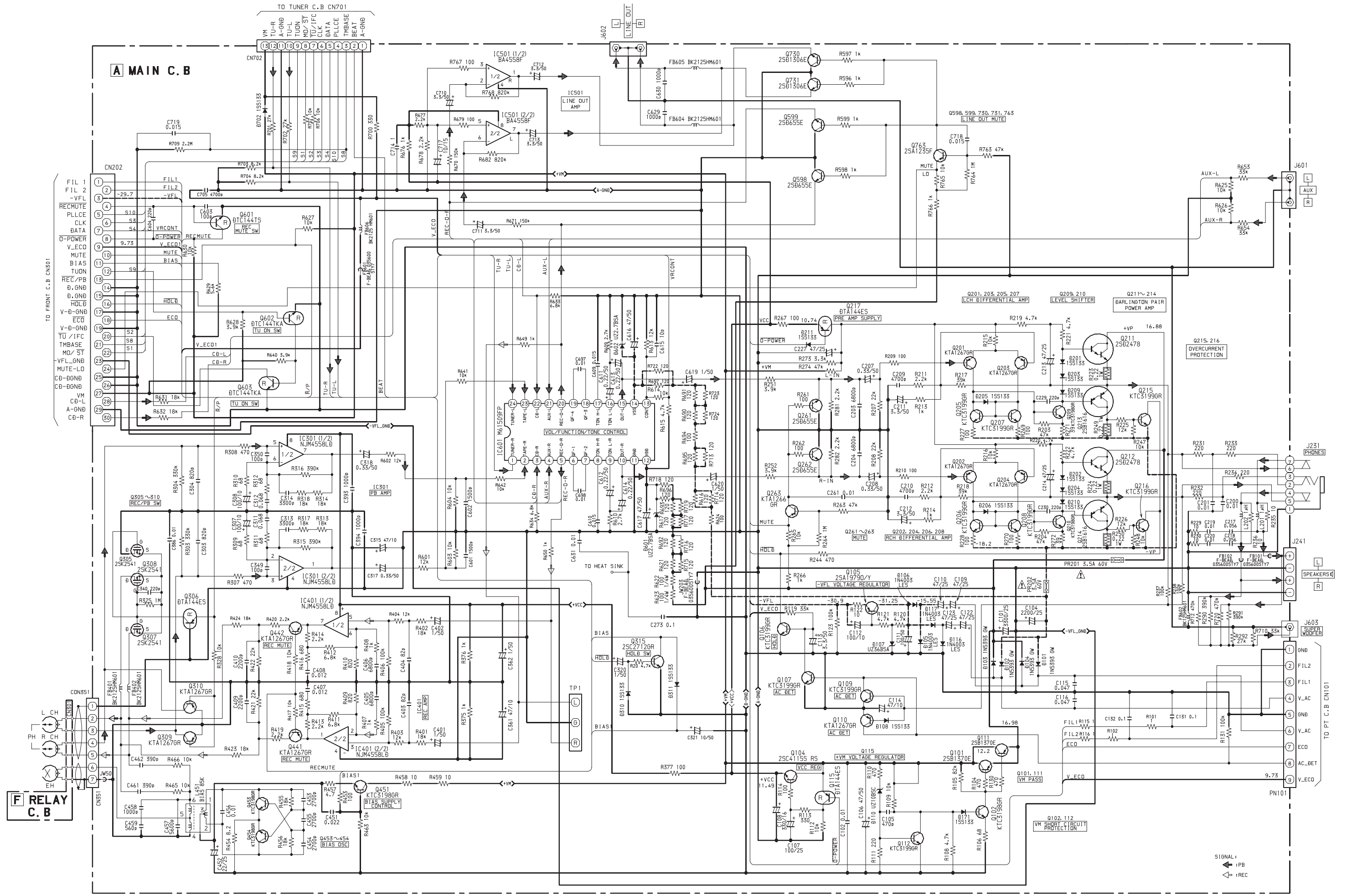
# A MAIN C.B



A  
B  
C  
D  
E  
F  
G  
H  
I  
J  
K  
L  
M  
N  
O  
P  
Q  
R  
S  
T  
U



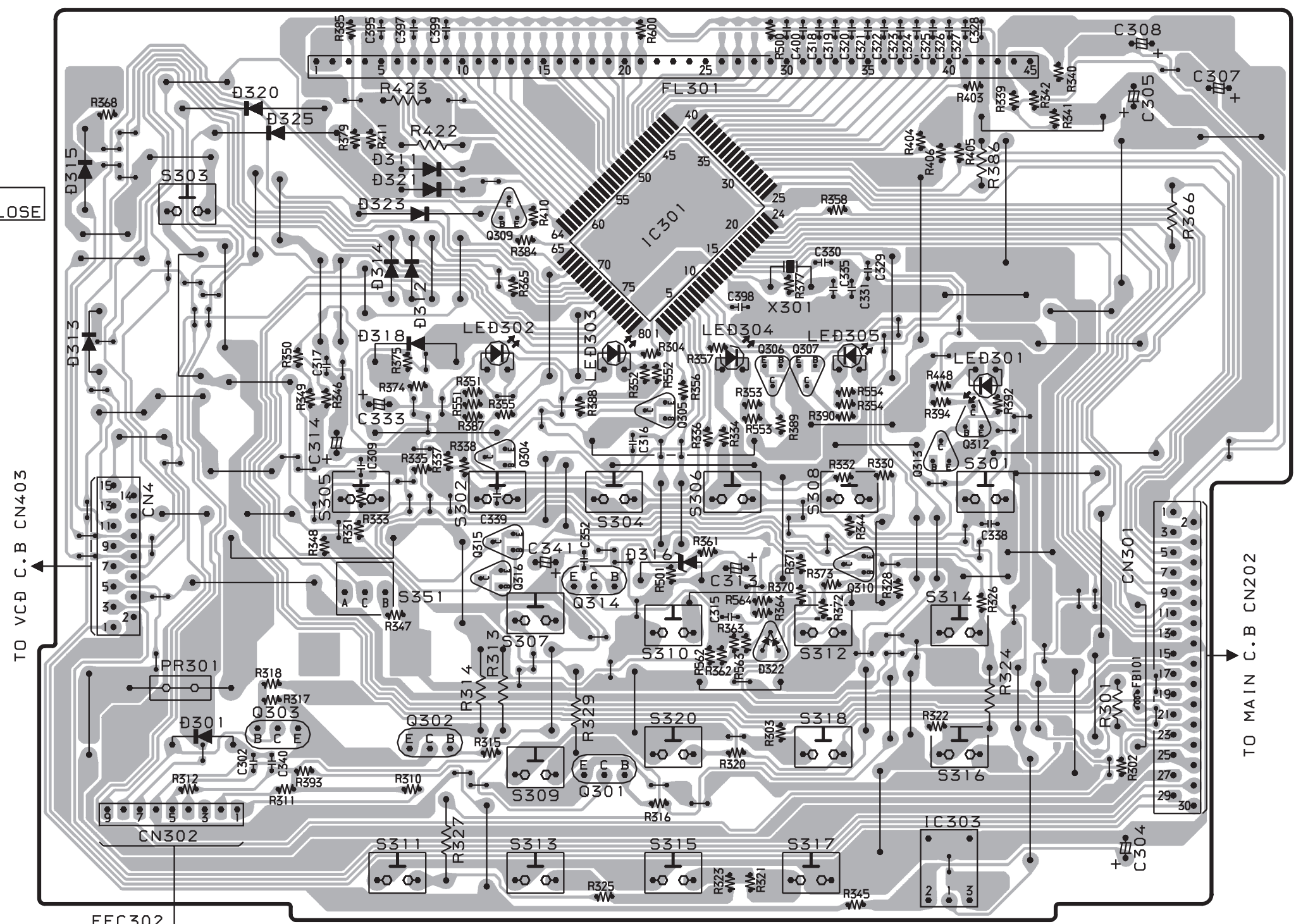
SCHEMATIC DIAGRAM - 1 (MAIN / RELAY)



# B FRONT C.B

FL301  
DISPLAY

S303  
CD  
▲ OPEN/CLOSE



TO VCD C.B CN403

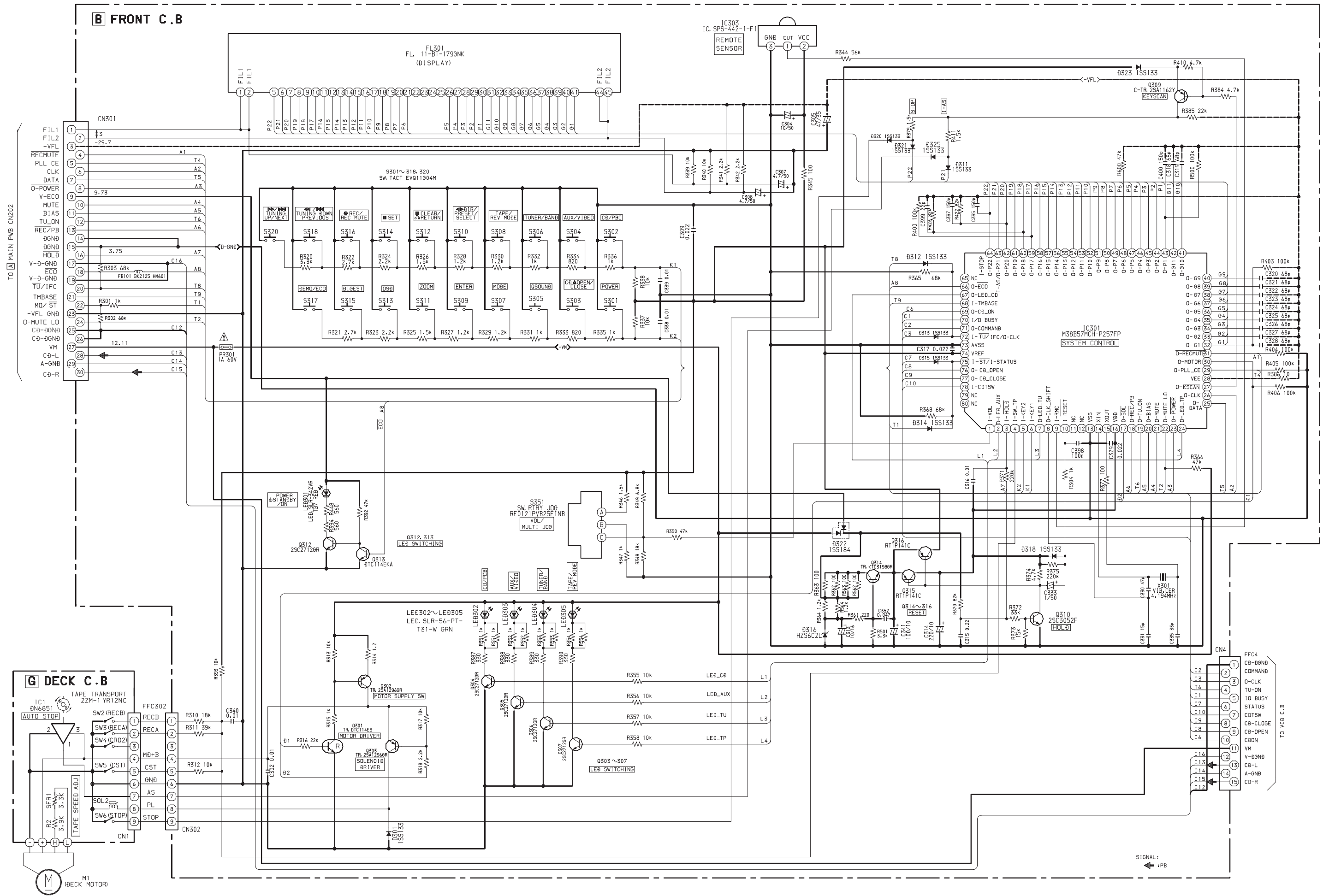
TO MAIN C.B CN202

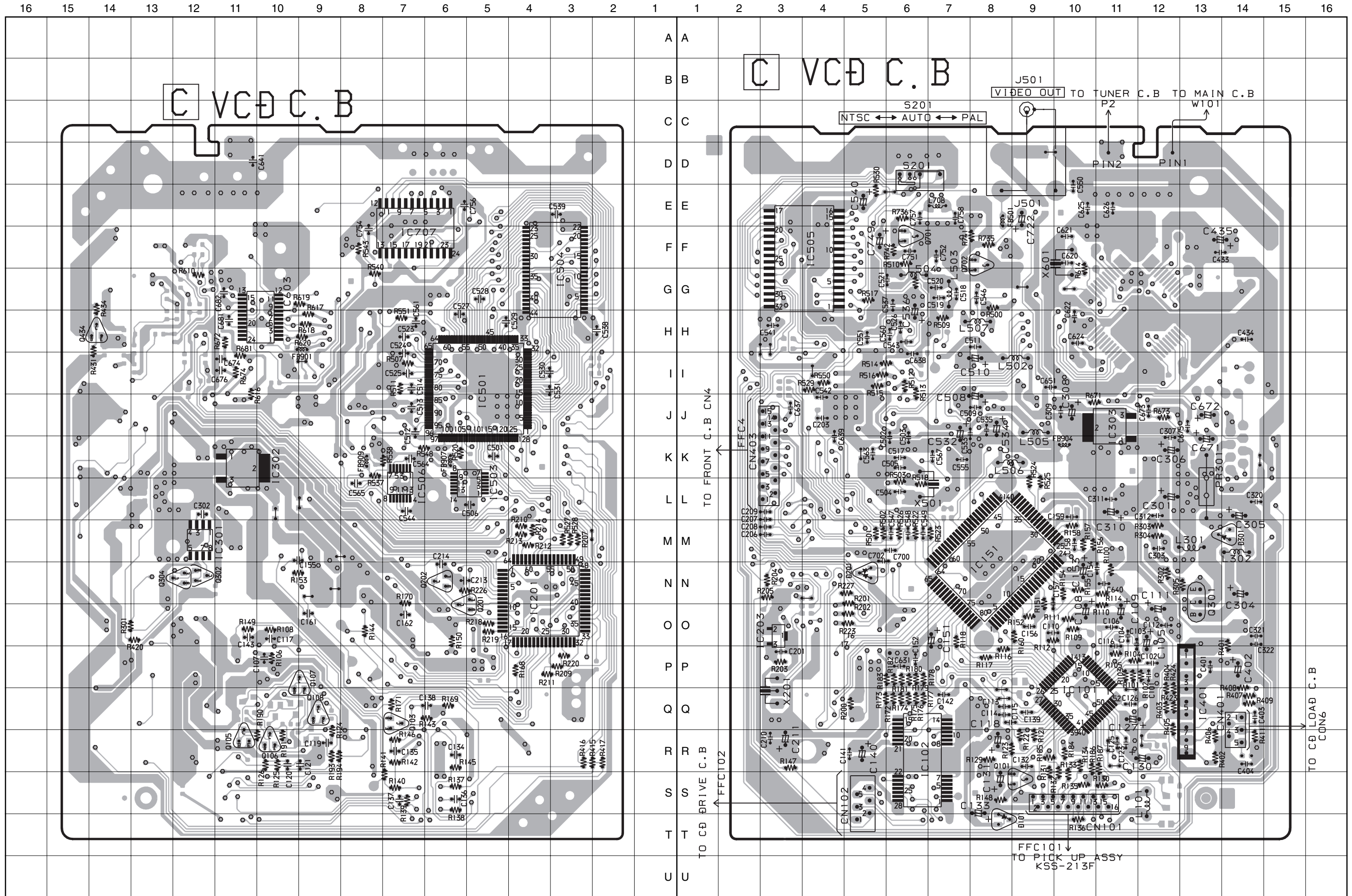
FFC302  
TO DECK C.B CN1

- |                          |                        |                               |                                  |                                   |                       |
|--------------------------|------------------------|-------------------------------|----------------------------------|-----------------------------------|-----------------------|
| S305<br>Q SOUND          | S302, LED302<br>CD/PCB | S304, LED303<br>AUX/VIDEO     | S306, LED304<br>TUNER/BAND       | S305, LED305<br>TAPE/<br>REV MODE | S301, LED301<br>POWER |
| S351<br>VOL/MULTI<br>JOG | S307<br>JOG MODE       | S310<br>DIR/<br>PRESET/SELECT | S312<br>CLEAR/<br>RETURN         | S314<br>SET                       |                       |
| S311<br>ZOOM             | S309<br>ENTER          | S320<br>TUNING UP<br>/NEXT    | S318<br>TUNING DOWN<br>/PREVIOUS | S316<br>REC/<br>REC MODE          |                       |
|                          | S313<br>OSD            | S313<br>DIGEST                | S317<br>DEMO/ECO                 | IC303<br>REMOTE<br>SENSOR         |                       |

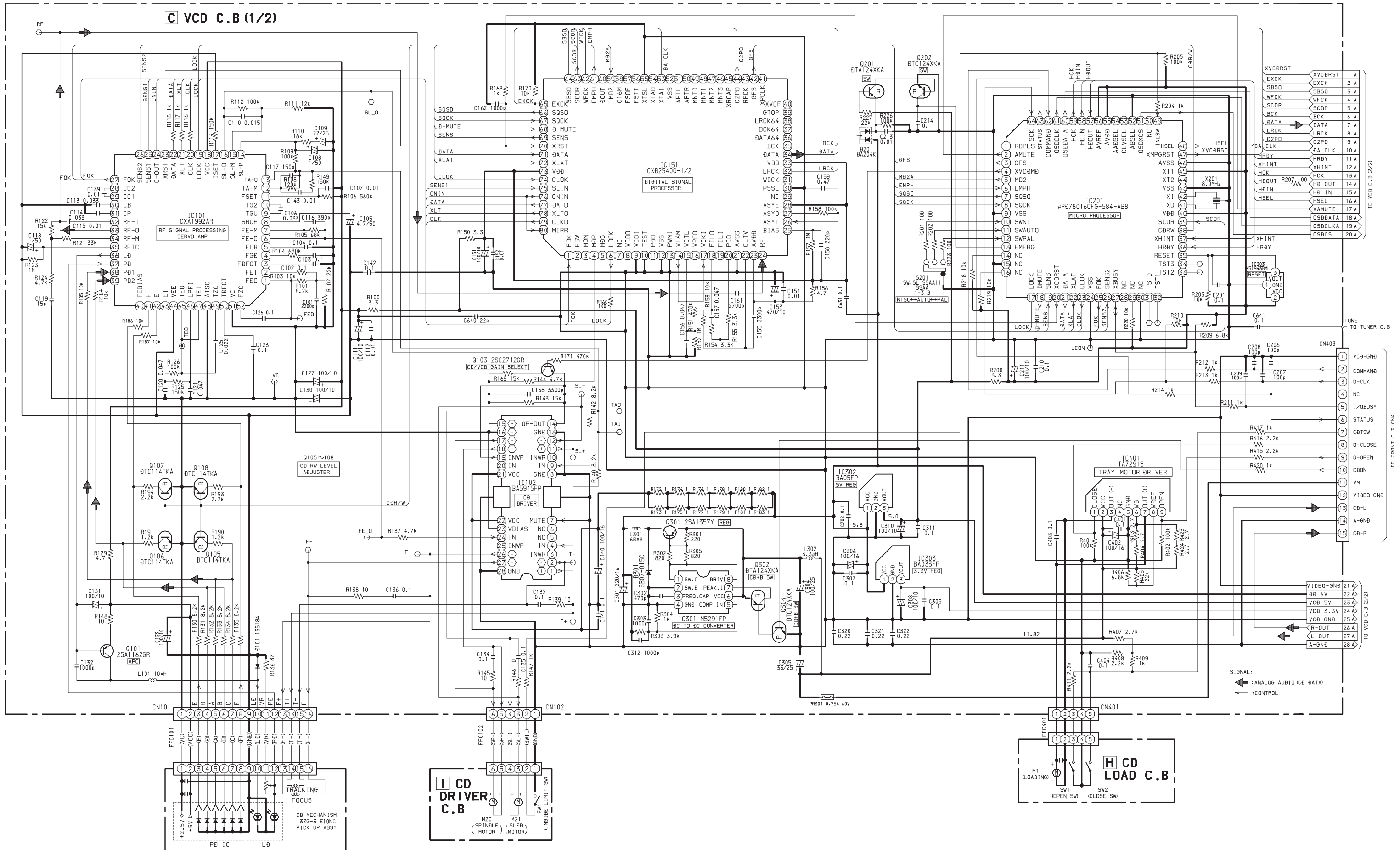
A  
B  
C  
D  
E  
F  
G  
H  
I  
J  
K  
L  
M  
N  
O  
P  
Q  
R  
S  
T  
U

SCHEMATIC DIAGRAM - 2 (FRONT / DECK)

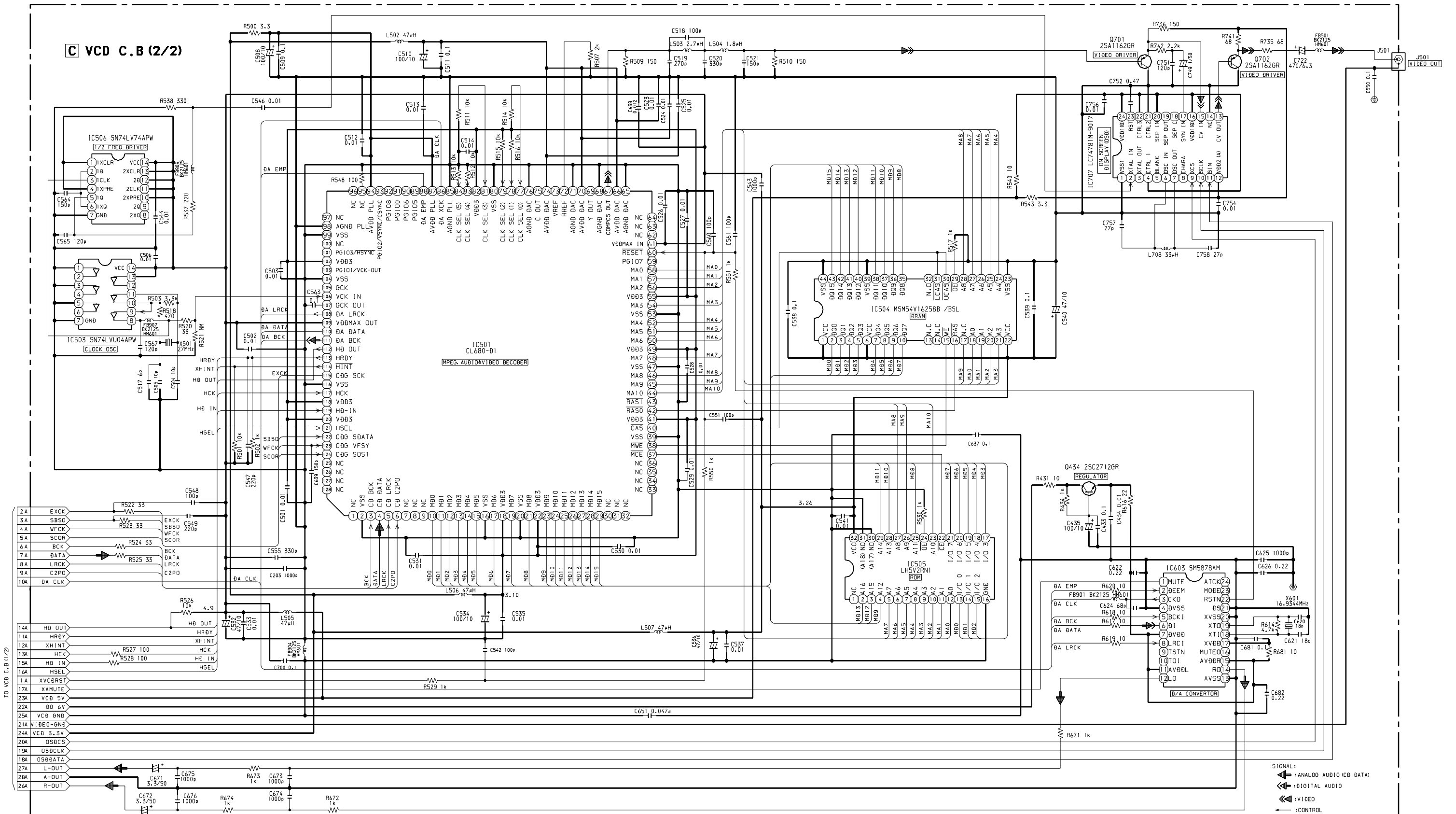


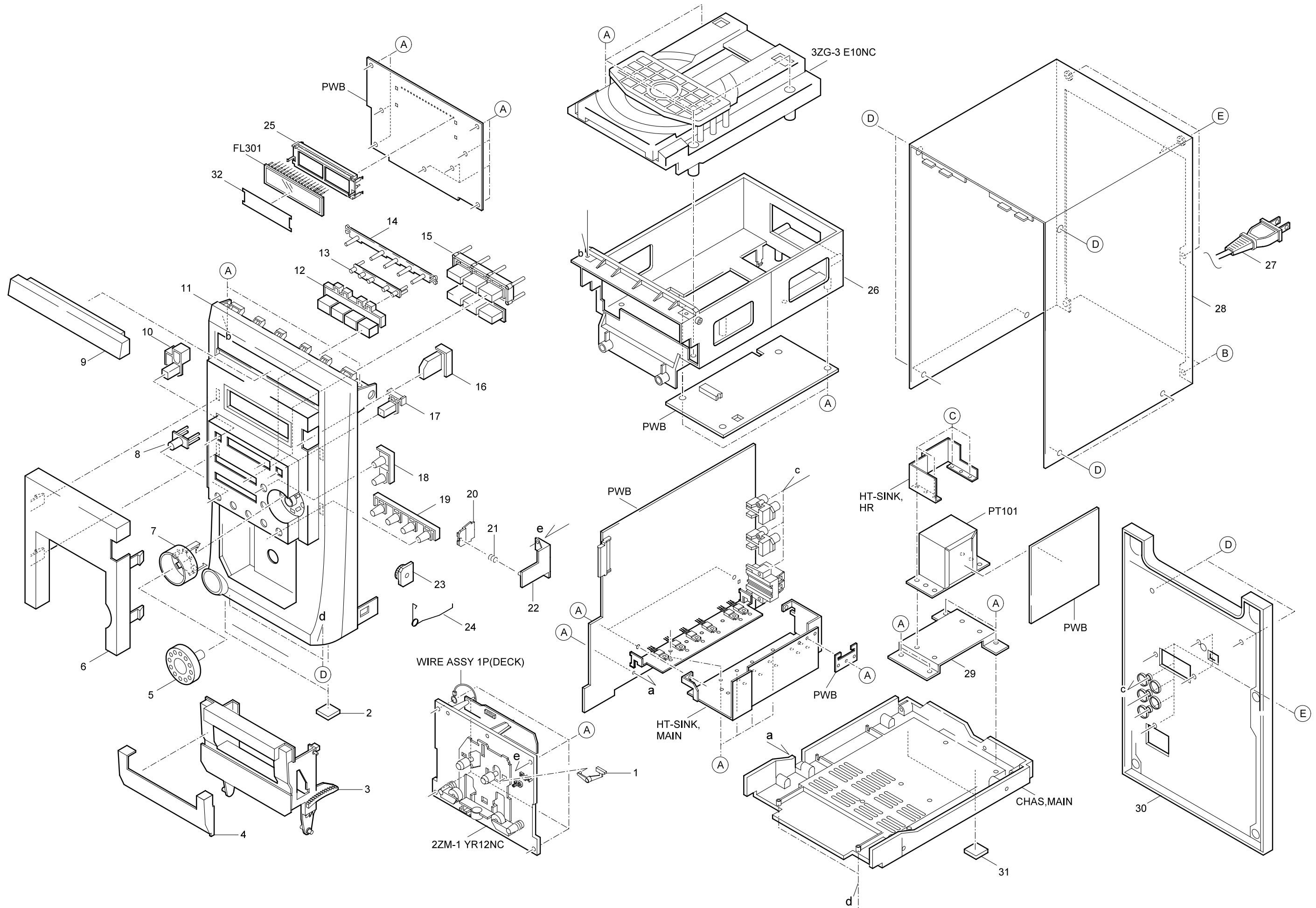


SCHEMATIC DIAGRAM - 3 (VCD 1/2 / CD LOAD / CD DRIVER)



SCHEMATIC DIAGRAM – 4 (VCD 2/2)





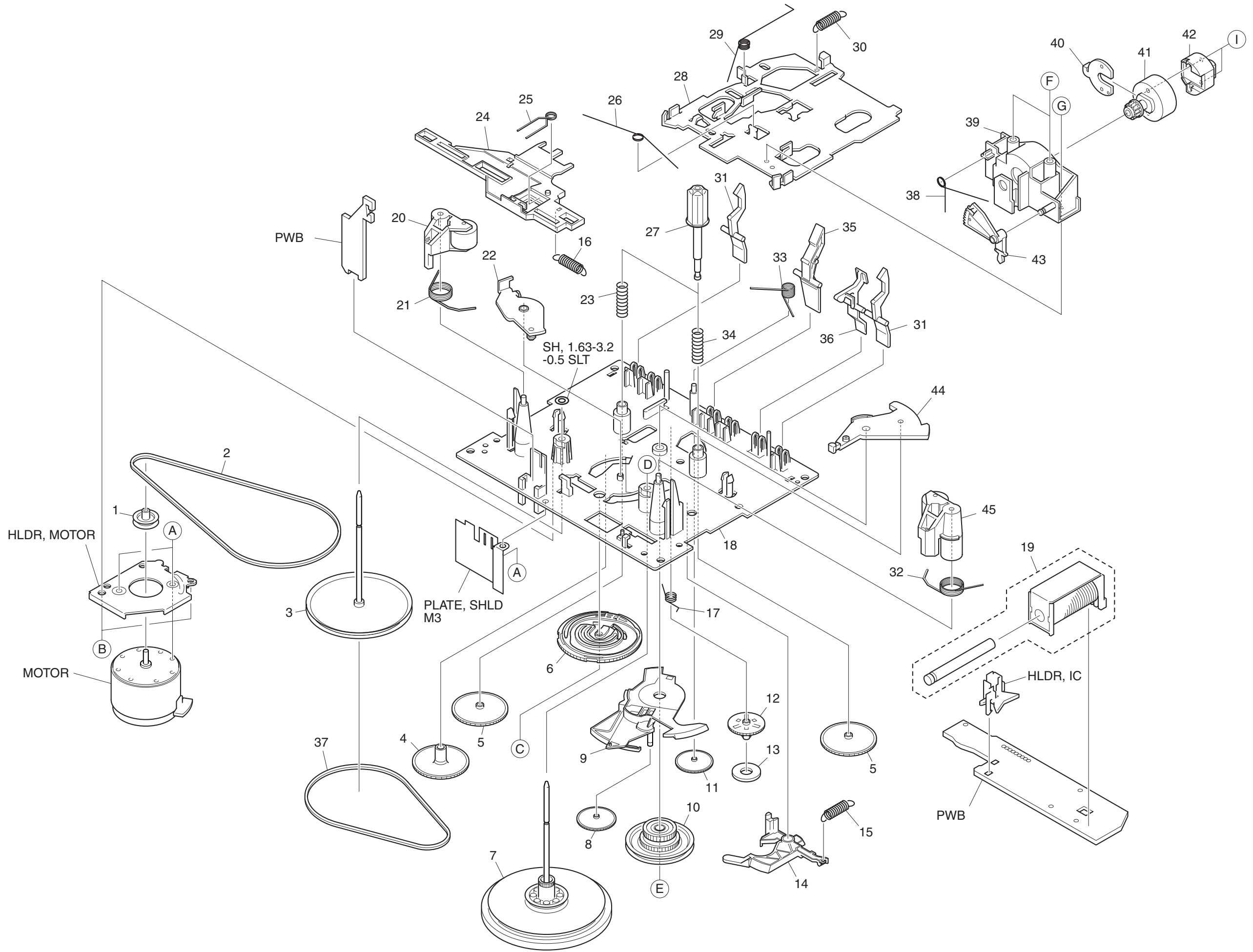
# MECHANICAL PARTS LIST 1 / 1

REF. NO.	PART NO.	KANRI NO.	DESCRIPTION	REF. NO.	PART NO.	KANRI NO.	DESCRIPTION
1	82-ZM1-264-010		LVR,EJECT R	21	86-NF9-224-010		SPR-C, LOCK
2	88-CL4-215-010		CUSH, FOOT FR	22	87-NF4-217-110		HLDR, LOCK 2
3	8A-CG9-046-010		BOX, CASS MK111	23	87-NF8-220-010		DMPR, 150
4	8A-CL9-052-010		WINDOW, CASS	24	88-CL4-220-010		SPR-T, CASS
5	8A-CL9-080-010		KNOB, RTRY VOLUME	25	82-NF7-210-110		GUIDE, FL (*)
6	8A-CG9-051-010		WINDOW, DISP SK V	26	8A-CL9-202-010		HLDR, CD
7	8A-CL9-077-010		RING, VOLUME	△ 27	87-A80-083-010		AC CORD, HC BLK
8	8A-CL9-088-110		LENS, REMOTE-C	28	8A-CL9-026-010		CABI, TOP
9	8A-CG9-030-010		PANEL, TRAY SK A	29	8A-CL9-211-110		HLDR, TRANS
10	8A-CL9-062-010		KEY, POWER	30	8A-CG9-012-010		PANEL, REAR H
11	8A-CG9-001-010		CABI, FR SI-MS	31	88-CL4-216-010		CUSH, FOOT REAR
12	8A-CL9-063-010		KEY, FUNC ASSY	32	8A-MA6-203-010		PLATE, FL
13	8A-CL9-206-010		GUIDE, LED-FUNC	A	87-067-703-010		TAPPING SCREW, BVT2+3-10
14	8A-CL9-085-010		REFLECTOR, LED-FUNC	B	87-B10-250-010		BVT2+3-12 W/O SLOT CR SILVER
15	8A-CL9-066-010		KEY, CONTROL	C	87-581-170-410		UIT+4-8
16	8A-CL9-065-010		KEY, OPEN	D	87-B10-231-010		QT1+3-12 SILVER CR
17	8A-CL9-067-010		KEY, Q-SOUND	E	87-B10-230-010		BVT2+3-10 W/O SLOT SILVER CR
18	8A-CL9-068-010		KEY, JOG MODE				
19	8A-CL9-069-110		KEY, DEMO				
20	82-NF5-229-010		PLATE, LOCK				

## COLOR NAME TABLE

Basic color symbol	Color	Basic color symbol	Color	Basic color symbol	Color
B	Black	C	Cream	D	Orange
G	Green	H	Gray	L	Blue
LT	Transparent Blue	N	Gold	P	Pink
R	Red	S	Silver	ST	Titan Silver
T	Brown	V	Violet	W	White
WT	Transparent White	Y	Yellow	YT	Transparent Yellow
LM	Metallic Blue	LL	Light Blue	GT	Transparent Green
LD	Dark Blue	DT	Transparent Orange	GM	Metallic Green
YM	Metallic Yellow	DM	Metallic Orange	PT	Transparent Pink
LA	Aqua Blue	GL	Light Green		

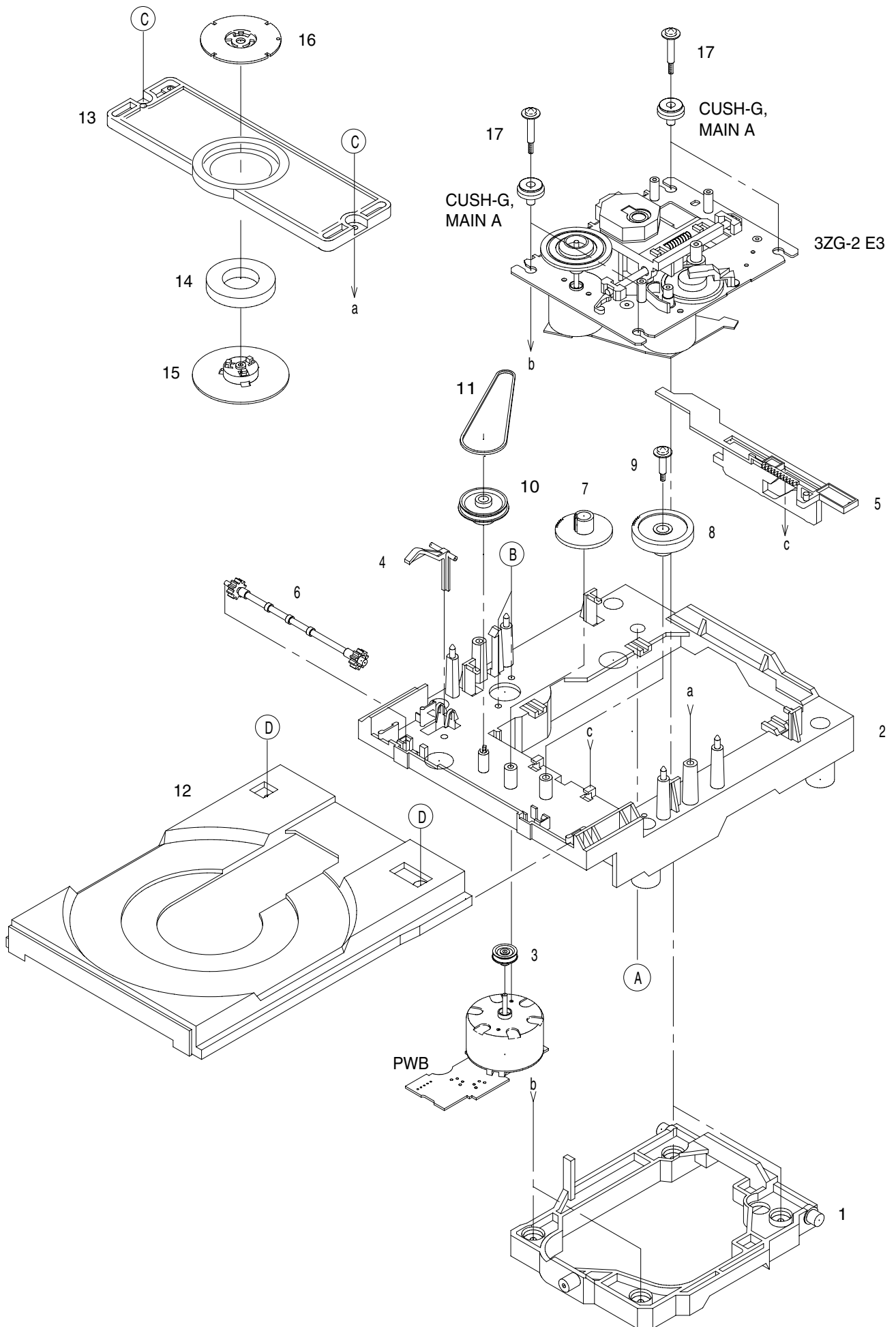




# TAPE MECHANISM PARTS LIST 1 / 1

REF. NO.	PART NO.	KANRI NO.	DESCRIPTION	REF. NO.	PART NO.	KANRI NO.	DESCRIPTION
1	82-ZM1-247-210		PULLEY,MOTOR	31	82-ZM1-240-110		LVR,REC(*)
2	82-ZM1-354-010		BELT, SBU MAIN2 EPDM	32	82-ZM1-259-210		SPR-T, PINCH R
3	82-ZM1-234-310		FLY-WHL ASSY, L	33	82-ZM1-257-010		SPR-T, CAS
4	82-ZM1-226-010		GEAR, REW	34	82-ZM1-285-410		SPR-C, BT L
5	82-ZM1-216-510		GEAR, REEL	35	82-ZM1-242-010		LVR, CAS
6	82-ZM1-221-310		GEAR, CAM(*)	36	82-ZM1-243-010		LVR, STOP
7	82-ZM1-237-610		FLY-WHL ASSY, R	37	82-ZM1-338-110		BELT, FR 4
8	82-ZM1-225-210		GEAR, FR	38	82-ZM3-353-010		SPR-T, HEAD 2
9	82-ZM1-224-410		LVR, FR	39	82-ZM1-207-910		GUIDE, TAPE
10	82-ZM3-333-310		SLIP DISK ASSY 2	40	82-ZM1-314-110		PLATE, HEAD
11	82-ZM1-223-010		GEAR, PLAY	41	82-ZM1-208-310		HLDR, HEAD
12	82-ZM1-220-210		GEAR, IDLER	42	87-A90-367-110		HEAD, RPH YK56R-BF414
13	82-ZM3-616-010		RING MAGNET 4	43	82-ZM1-210-110		GEAR, H T
14	82-ZM1-227-310		LVR, TRIG	44	82-ZM1-222-310		LVR, PLAY(*)
15	82-ZM1-305-210		SPR-E, TRIG 2	45	82-ZM1-344-210		LVR ASSY, PINCH R2
16	82-ZM1-255-310		SPR-E, LVR DIR	A	87-251-070-410		U+2.6-3
17	82-ZM1-322-010		SPR-T, FR 60	B	87-741-073-410		UT2+2.6-6 GLD
18	82-ZM1-358-010		CHAS ASSY, FPC	C	87-B10-008-010		W-P, 2.08-8-0.4-SLIP
19	82-ZM3-627-010		SOL ASSY, 27 SO	D	80-ZM6-243-010		SH 1.75-3.6-0.5 SLT
20	82-ZM1-341-210		LVR ASSY, PINCH L2	E	82-ZM3-334-010		PW 2.16-6-0.4
21	82-ZM1-258-210		SPR-T, PINCH L	F	86-ZM4-206-110		S-SCREW, AZIMUTH L
22	82-ZM1-333-210		PLATE, LINK2	G	85-ZM3-202-010		S-SCREW, TG
23	82-ZM1-244-510		SPR-C, BT	H	82-ZM3-222-010		S-SCREW, SHILD PLATE
24	82-ZM1-266-310		LVR, DIR	I	80-ZM6-207-010		V+1.6-7
25	82-ZM1-214-010		SPR-T, DIR				
26	82-ZM1-269-210		SPR-T, BRG				
27	82-ZM1-217-410		REEL TABLE				
28	82-ZM1-206-910		CHAS, HEAD				
29	82-ZM1-219-110		SPR-T, LINK				
30	82-ZM1-218-010		SPR-E, HB				

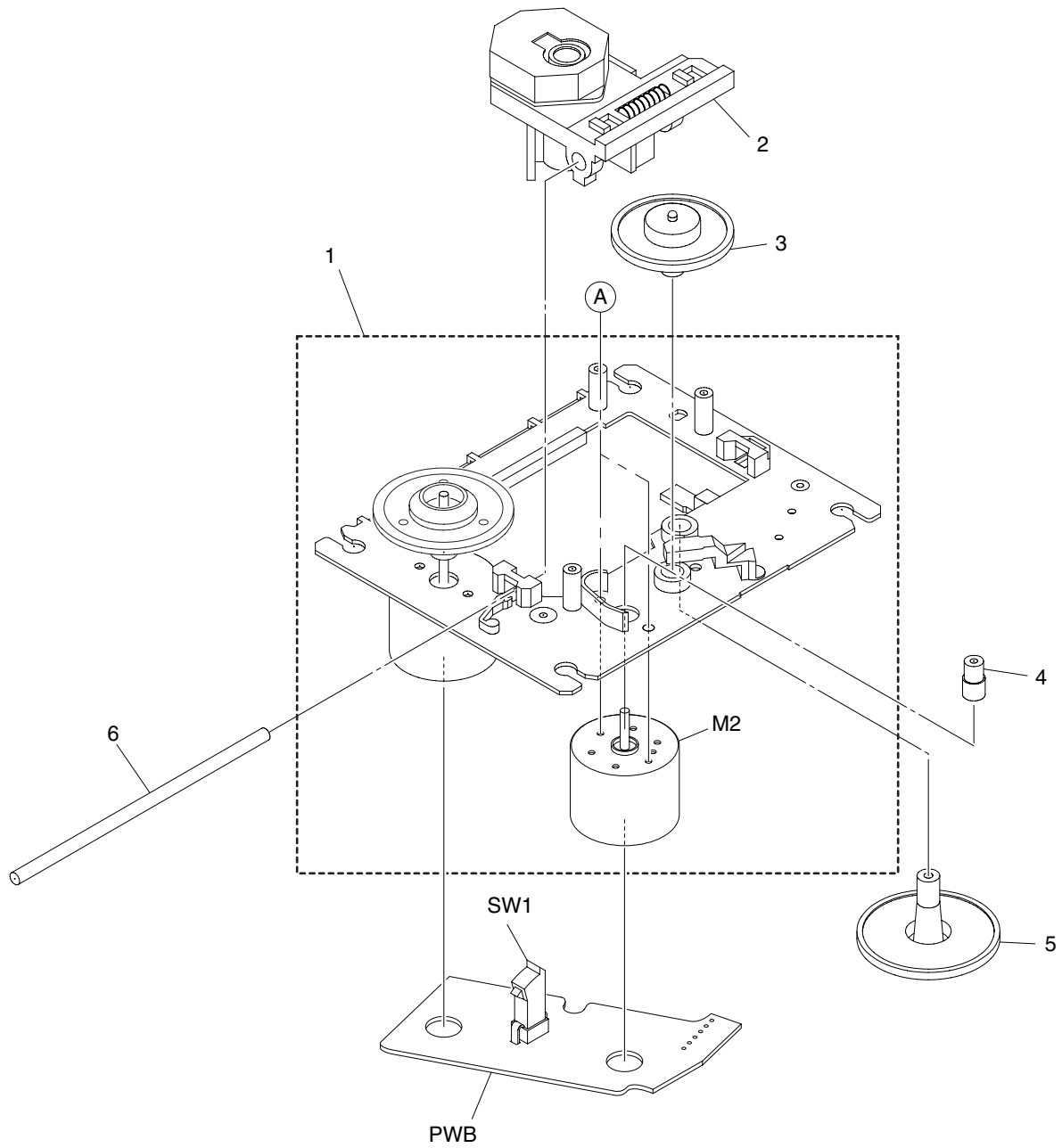
CD MECHANISM EXPLODED VIEW 1 / 2



# CD MECHANISM PARTS LIST 1 / 2

REF. NO.	PART NO.	KANRI NO.	DESCRIPTION
1	83-ZG3-224-510		HLDR M2
2	83-ZG3-228-610		CHAS, L6
3	83-ZG3-208-010		PULLEY, MOTOR
4	83-ZG3-213-010		LVR, SW
5	83-ZG3-209-610		CAM, SLIDE
6	83-ZG3-207-010		GEAR, TRAY
7	83-ZG3-204-210		GEAR, C
8	83-ZG3-205-010		GEAR, D
9	83-ZG3-217-010		S-SCREW, GEAR D
10	83-ZG3-220-210		GEAR, PULLEY 2
11	83-ZG3-214-010		BELT, L
12	83-ZG3-229-410		TRAY, CD 2
13	83-ZG3-210-110		HLDR, CHUCK
14	83-ZG3-602-010		RING, MAG
15	83-ZG3-212-010		CAP, DISC
16	83-ZG3-211-010		PLATE, DISC
17	81-ZG1-254-010		S-SCREW, MECH HLDR
A	87-067-945-110		VFT2+3-12 (F10)
B	87-251-071-410		U+2.6-4
C	87-512-074-210		SCREW, 2+2.6-8
D	87-352-075-210		VT2+2.6-10

## CD MECHANISM EXPLODED VIEW 2 / 2



## CD MECHANISM PARTS LIST 2 / 2

REF. NO.	PART NO.	KANRI NO.	DESCRIPTION
1	83-ZG2-262-010		CHAS ASSY, E3
2	87-A90-836-010		PICKUP, KSS-213F
3	83-ZG2-235-010		GEAR, A3
4	83-ZG2-236-010		GEAR, MOTOR 3
5	83-ZG2-205-310		GEAR, B
6	83-ZG2-253-010		SHAFT, SLIDE 5
A	87-261-032-210		V+2-3

**アイワ株式会社** 〒110-8710 東京都台東区池之端1-2-11 ☎03(3827)3111 (代表)  
**AIWA CO.,LTD.** 2-11, IKENOHATA 1-CHOME, TAITO-KU, TOKYO 110, JAPAN TEL:03 (3827) 3111