

| | | | |
|---|----------------------------|--|--------------|
| Date 13.06.03 | Ref. No. 03AH003 | Model AM-LM918, LCX-MT22, XR-FD1, XR-FD5, XR-V10MD | HA |
| Subject "Disc Error" Indication | | | IRIS C625 |

SYMPTOM

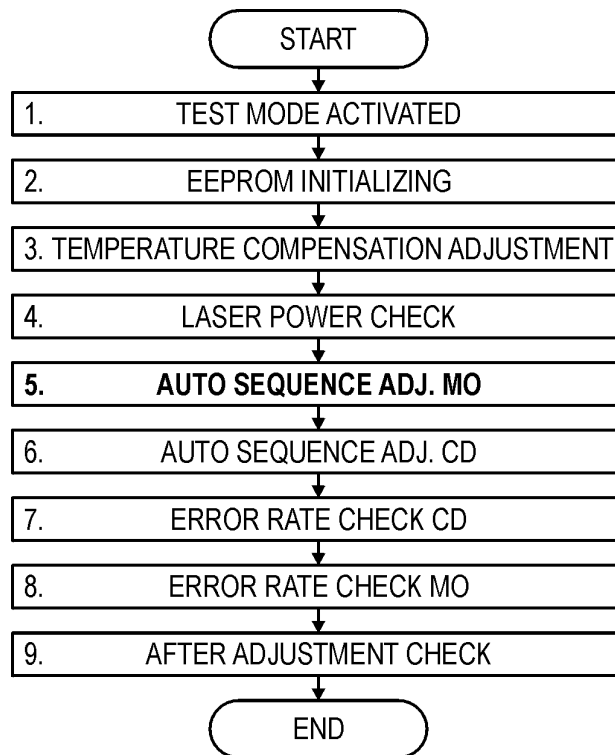
"Disc Error" may be displayed with specific discs such as Sony MD (Neige series), i.e. 5MD74NEA, 5MD80NEA, 10MD74NEA, 10MD80NEA.

CAUSE

Unstable reading when using low-reflectivity MO discs.

SOLUTION

Using the test disc "**MDW-74/AU1**" (8-892-341-41), only perform the "Auto Sequence Adj. MO" (step 5 of the "Adjustment Procedure Flowchart" below).



NOTE

If the message "Failed" appears during the adjustment, perform the complete adjustment procedure as described in the Service Manual.