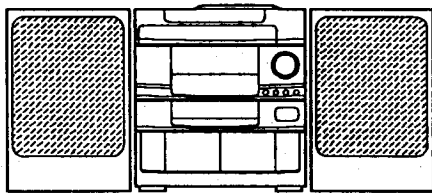


aiwa



Z-M2700

Z-M2750



COMPACT DISC STEREO
CASSETTE RECEIVER

- BASIC TAPE MECHANISM : 2ZM-3MK2 PR6N
- BASIC CD MECHANISM : 6ZG-1 YDFNM

• TYPE : EZ

SUPPLEMENT

SYSTEM	CD - CASSEIVER	SPEAKER	REMOTE CONTROLLER
Z-M2700	CX-ZM2700	SX-FZ2700	RC UNIT, 6AS01
Z-M2750	CX-ZM2750	SX-AZ2800	

- This Service Manual contains information about the difference between Z-M2700 (EZ), Z-M2750 (EZ) and Z-M2700 (K). If requiring the other information, see Service Manual of Z-M2700 (K). (S/M Code No. 09-966-134-8FE)
- If requiring information about the Speaker, see Service Manual of SX-FZ2700 and SX-AZ2800. (S/M Code No. 09-964-137-8FP)

SPECIFICATIONS

<FM Tuner section>

Tuning range 87.5 MHz to 108 MHz
Usable sensitivity (IHF) 13.2 dBf
Antenna terminals 75 ohms (unbalanced)

<AM (MW) Tuner section>

Tuning range 531 kHz to 1602 kHz (9 kHz step)
 530 kHz to 1710 kHz (10 kHz step)
Usable sensitivity 350 μ V/m
Antenna Loop antenna

<LW Tuner section>

Tuning range 144 kHz ~ 290 kHz
Usable sensitivity 1400 μ V/m
Antenna Loop antenna

<Amplifier section>

Power output * Rated 65 W + 65 W
 (6 ohms, T.H.D. 1%, 1 kHz/DIN 45500)
 Reference : 85 W + 85 W
 (6 ohms, T.H.D. 10%, 1 kHz/DIN 45324)

DIN MUSIC POWER

125 W + 125 W

* (without connecting to the

SURROUND SPEAKERS)

Total harmonic distortion 0.1 % (33 W, 1kHz, 6 ohms, DIN AUDIO)

Inputs VIDEO/AUX : 150 mV (adjustable)
 PHONO : 250 mV (47 kohms)
 MIC 1, MIC 2 : 1 mV (20 kohms)

Outputs SUPER WOOFER : 2.00 V
 SPEAKERS: accept speakers of 6 ohms or more
 SURROUND SPEAKERS : accept speakers of 16 ohms or more
 PHONES (stereo jack) : accepts headphones of 32 ohms or more

<Cassette deck section>

Track format 4 tracks, 2 channels stereo
Frequency response CrO₂ tape : 50 Hz - 16000 Hz
 Normal tape : 50 Hz - 15000 Hz
Signal-to-noise ratio 60 dB (Dolby B NR ON, CrO₂ tape peak level, above 400 Hz)
Recording system AC bias
Heads Deck 1 : Playback head x1
 Deck 2 : Recording/playback/erase head x 1

<Compact disc player section>

Laser Semiconductor laser ($\lambda = 780$ nm)
D-A converter 1 bit dual
Signal-to-noise ratio 85 dB (1 kHz, 0 dB)
Harmonic distortion 0.03 % (1 kHz, 0 dB)
Wow and flutter Unmeasurable

Speaker system SX-FZ2700 <Z-M2700>, SX-AZ2800 <Z-M2750>

Cabinet type 4 way, bass reflex with surround speaker

Speakers Woofer : 220 mm cone type
 Mid-range : 80 mm cone type <Z-M2750>
 Tweeter : 80 mm cone type
 Super tweeters : 20 mm ceramic type
 50 mm ceramic type
 Surround speaker : 80 mm cone type

Impedance Front speaker : 6 ohms
 Surround speaker : 16 ohms

Output sound pressure level 90 dB/W/m

Dimensions (W x H x D) 260 x 444 x 300 mm <Z-M2700>

270 x 444 x 293 mm <Z-M2750>


Weight 5.8 kg <Z-M2700>

6.0 kg <Z-M2750>

<General>

Power requirements 230 V AC, 50 Hz
Power consumption 370 W
Dimensions of main unit (W x H x D) 360 x 394.5 x 375.5 mm
Weight of main unit 11.2 kg

• Design and specifications are subject to change without notice.

• Dolby noise reduction manufactured under license from Dolby Laboratories Licensing Corporation.
 "DOLBY" and the double-D symbol  are trademarks of Dolby Laboratories Licensing Corporation.

ELECTRICAL MAIN PARTS LIST

If can't understand for Description please kindly refer to "REFERENCE NAME LIST".

REF. NO.	PART NO.	KANRI NO.	DESCRIPTION	REF. NO.	PART NO.	KANRI NO.	DESCRIPTION
MAIN C.B				MIC C.B			
C239	87-018-134-089		CAP,TC-U 0.01-16 Y	FB6	87-008-372-089		FLTR, EMI BL OIRNI
C240	87-018-134-089		CAP,TC-U 0.01-16 Y	C604	87-010-318-089		C-CAP,S 47P-50 CH
C256	87-012-140-089		C-CAP,S 470P-50 CH	C615	87-010-196-089		C-CAP,S 0.1-25 F
C261	87-010-197-089		C-CAP,S 0.01-25 B				
C300	87-018-127-089		CAP,TC-U 470P				
				AC2 C.B			
C735	87-018-209-089		CAP,TC-U 0.1-50 F				
C773	87-010-196-089		C-CAP,S 0.1-25 F	C130	87-010-196-089		C-CAP,S 0.1-25 F
C786	87-010-197-089		C-CAP,S 0.01-25 B				
C789	87-010-179-089		C-CAP,S 1200P-50 B				
C792	87-010-182-089		C-CAP,S 2200P-50 B	CD MAIN C.B			
				C28	87-010-146-029		C-CAP,S 2P-50 C CH GRM
C902	87-015-785-089		C-CAP, 0.1-25 F	C103	87-018-133-089		CAP,TC-U 4700P-16 NX
C998	87-015-819-089		C-CAP, 0.01-50 BK				
L721	87-003-102-089		COIL,10UH				
FRONT C.B							
C733	87-010-177-089		C-CAP,S 820P-50 SL				
C900	87-018-127-089		CAP,TC-U 470P				
C901	87-018-131-089		CAP,TC-U 1000P-50				

PRACTICAL SERVICE FIGURE

<TUNER SECTION>

<FM SECTION>

IHF Sensitivity : 8dB + 6dB / -10dB
 [at 87.5 / 98.0MHz]
 10dB + 6dB / -10dB
 [at 108.0MHz]

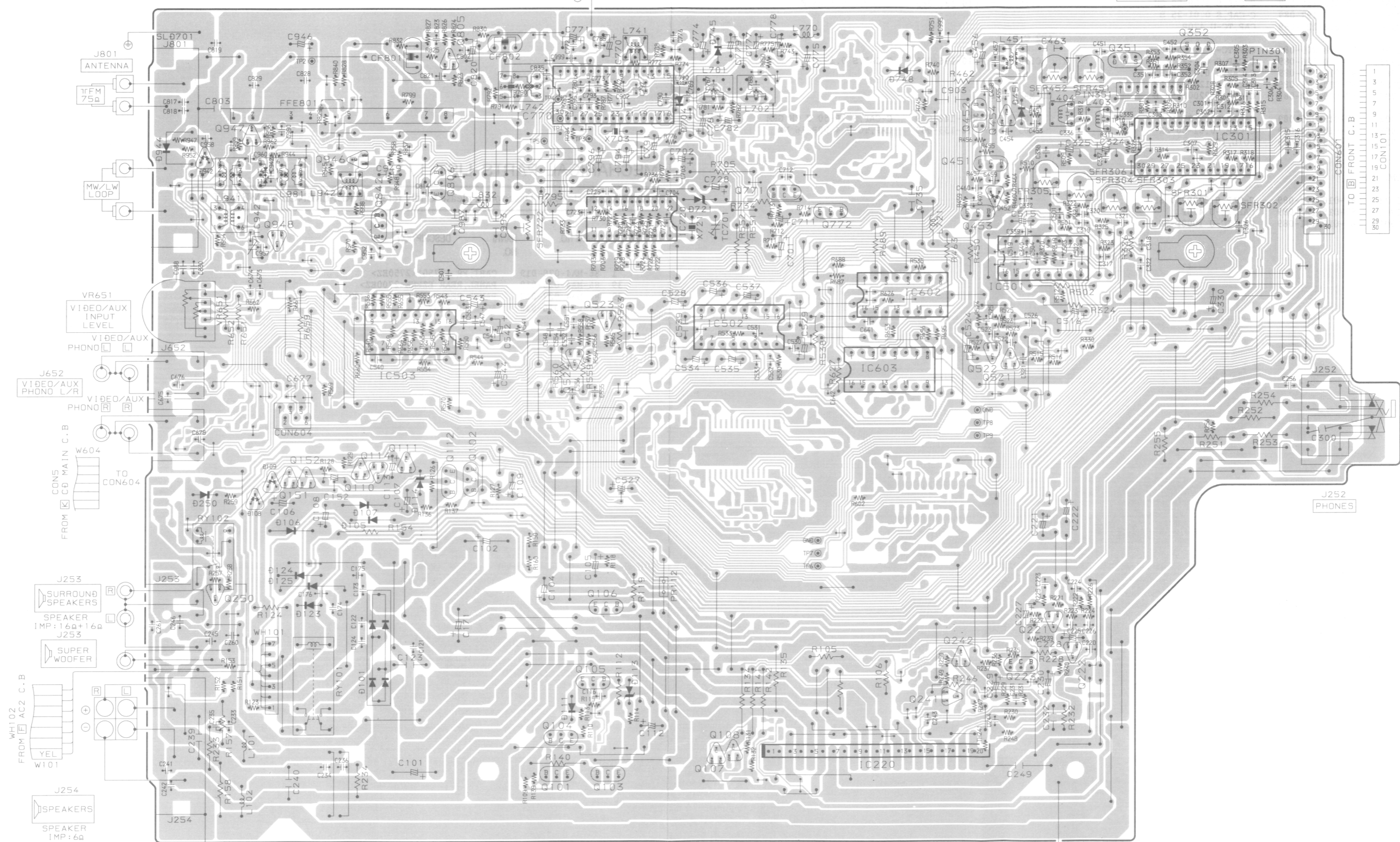
MECHANICAL PARTS LIST 1 / 1

If can't understand for Description please kindly refer to "REFERENCE NAME LIST".

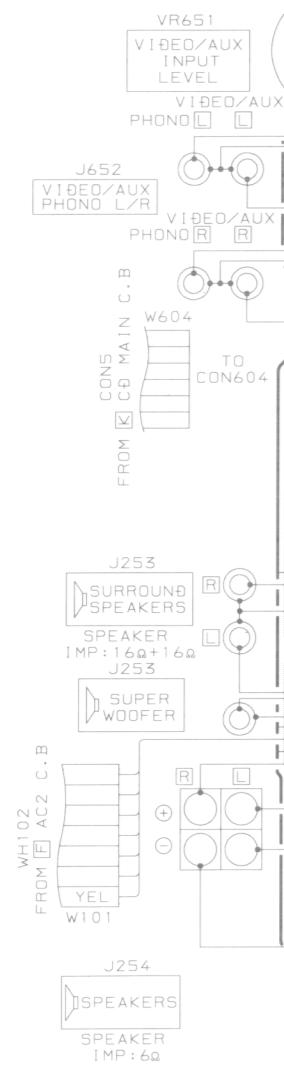
REF. NO.	PART NO.	KANRI NO.	DESCRIPTION
1	86-MA4-028-019		CABI,FR (2750)<2750EZ>
39	86-MA4-026-019		PANEL,REAR EZENE<2700EZ>
39	86-MA4-027-019		PANEL,REAR EZENE (2750)<2750EZ>
△ 40	87-050-016-018		AC CORD,ASSY E

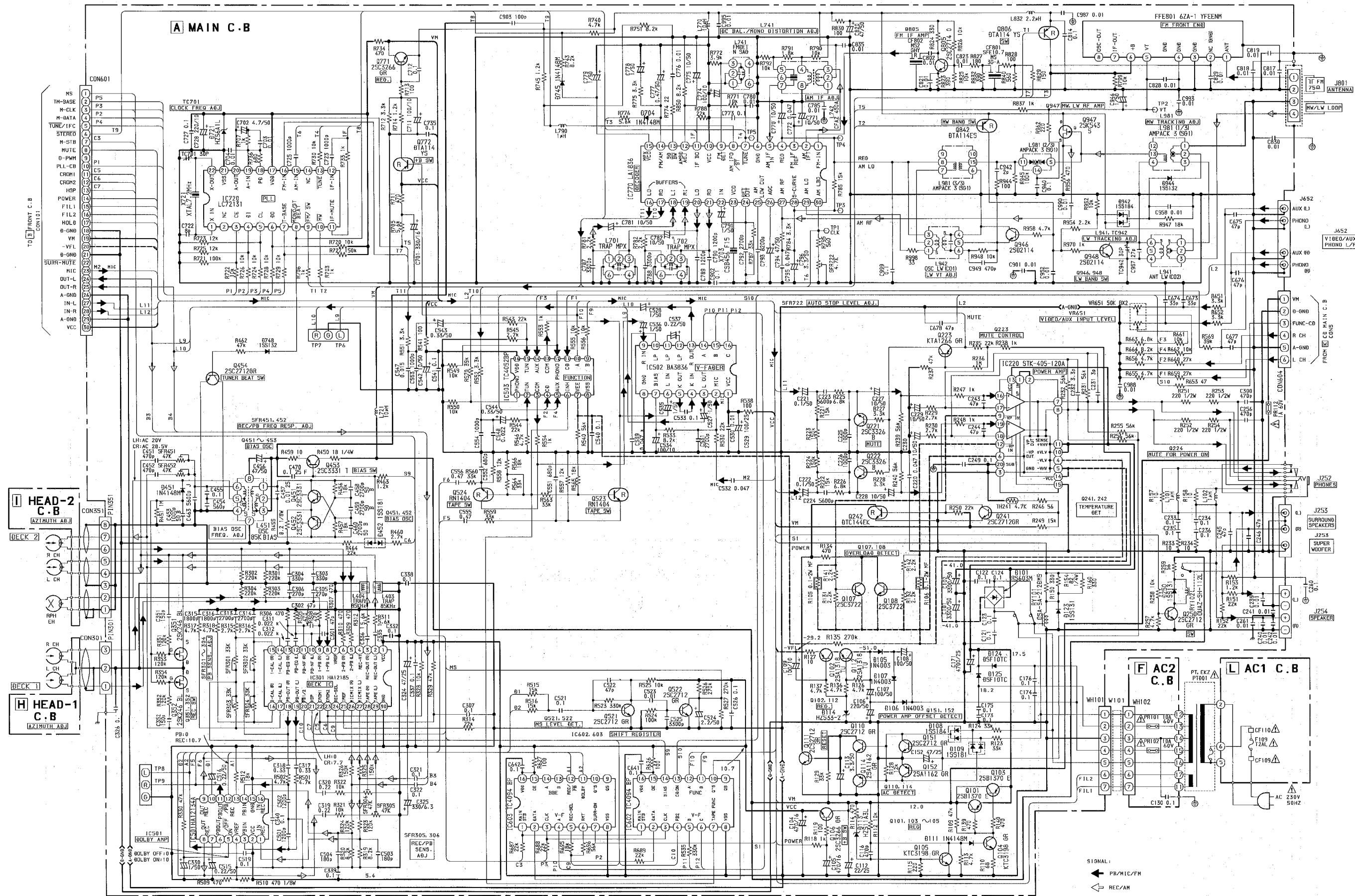
A MAIN C.B

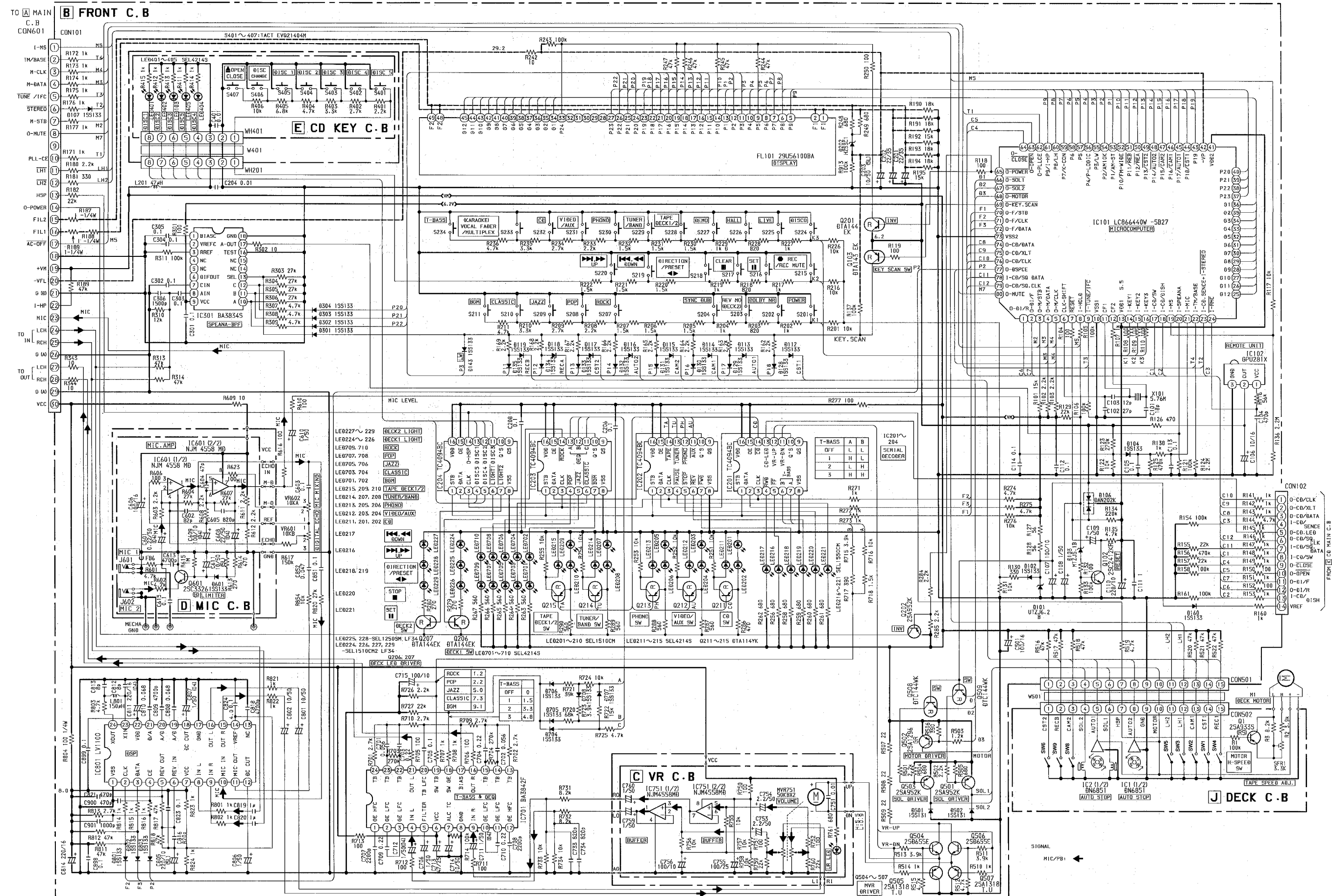
FROM I HEAD-2 C.B FROM H HEAD-1 C.B
CON351 1 3 5 7 8
CON301 1 3



TO FRONT C.B
CON101

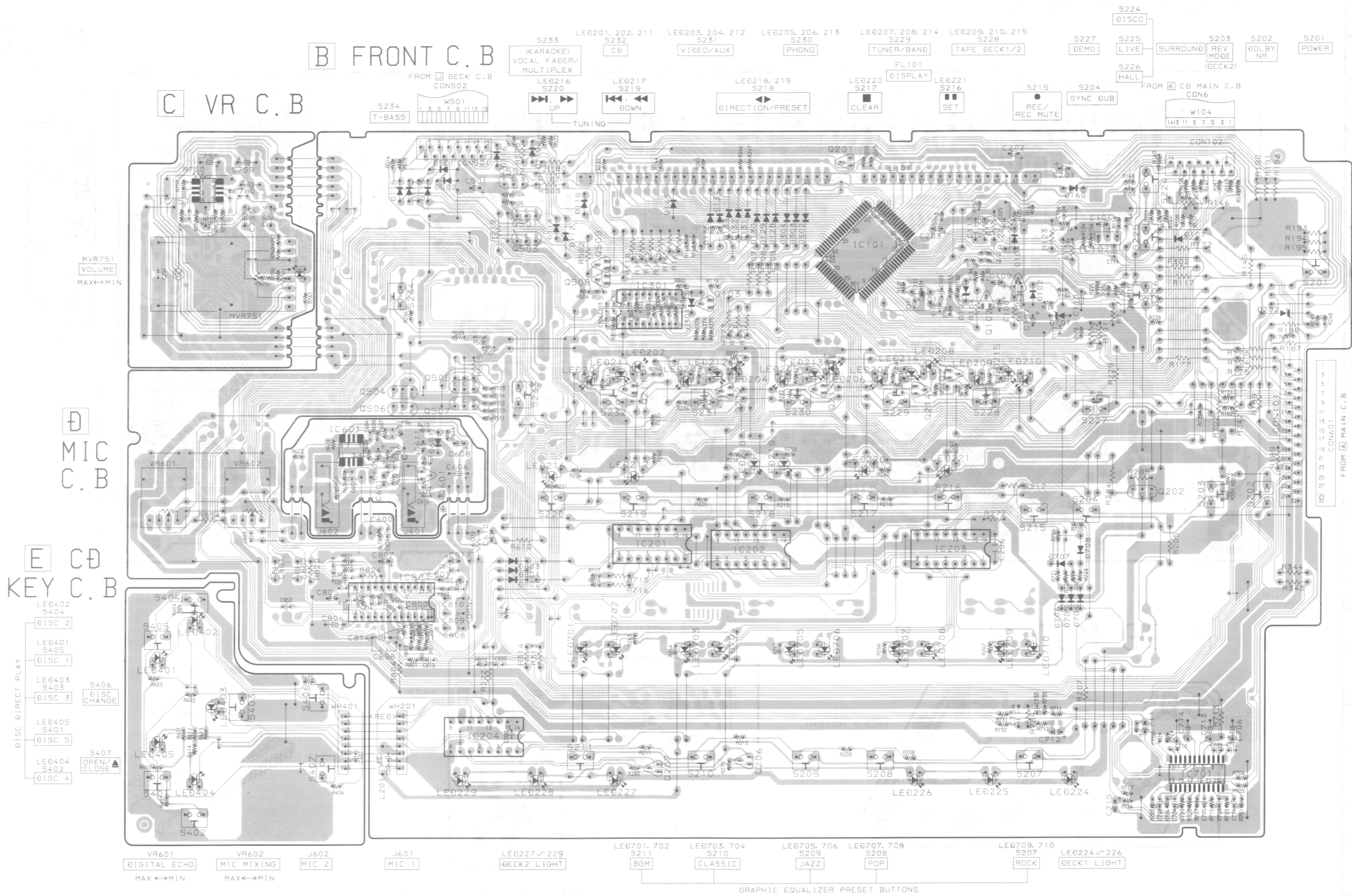






1 2 3 4 5 6 7 8 9 10 11 12 13 14

A
B
C
D
E
F
G
H
I
J



1 2 3 4 5 6 7 8 9 10 11 12 13 14

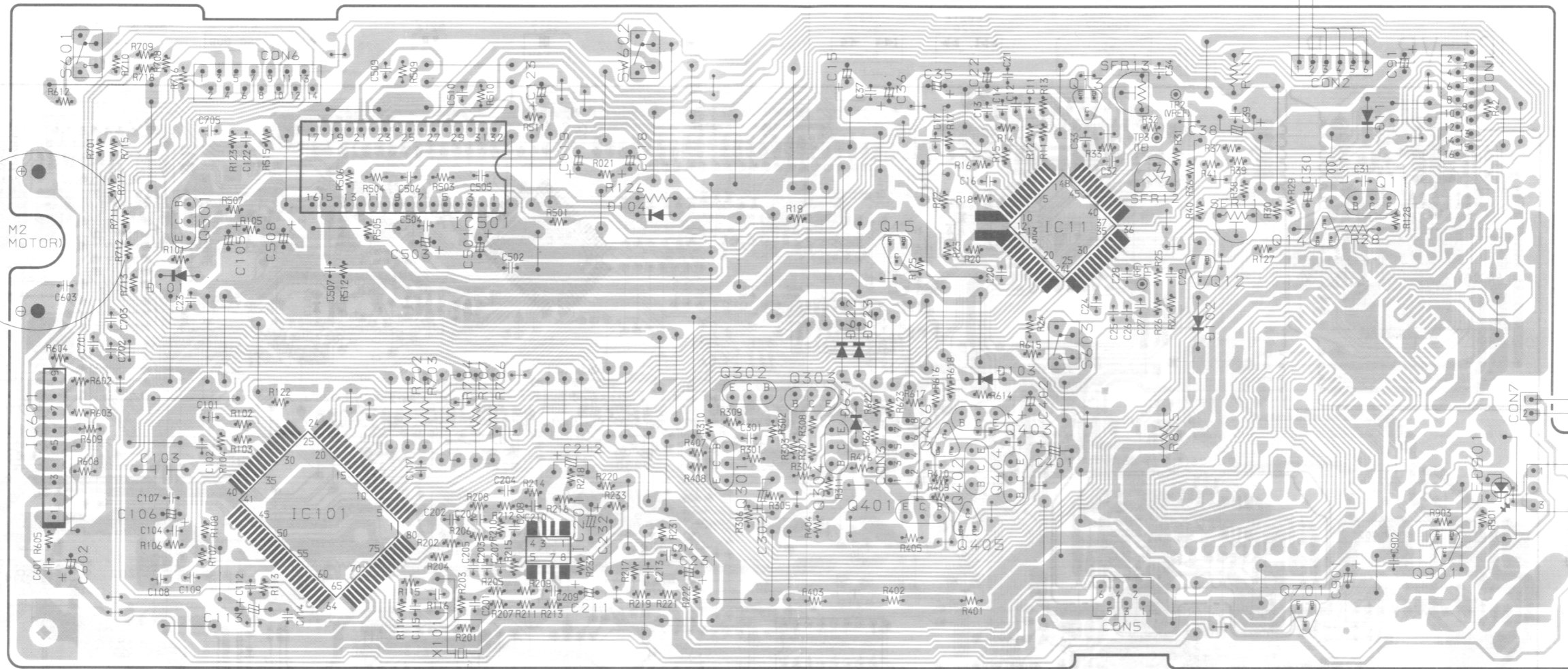
A
B
C
D
E
F
G
H
I
J

K CD MAIN C.B

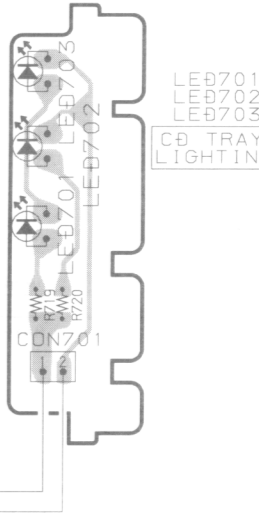
FROM **B** FRONT C.B
CON102

S601
OPEN SW

S602
UP SW



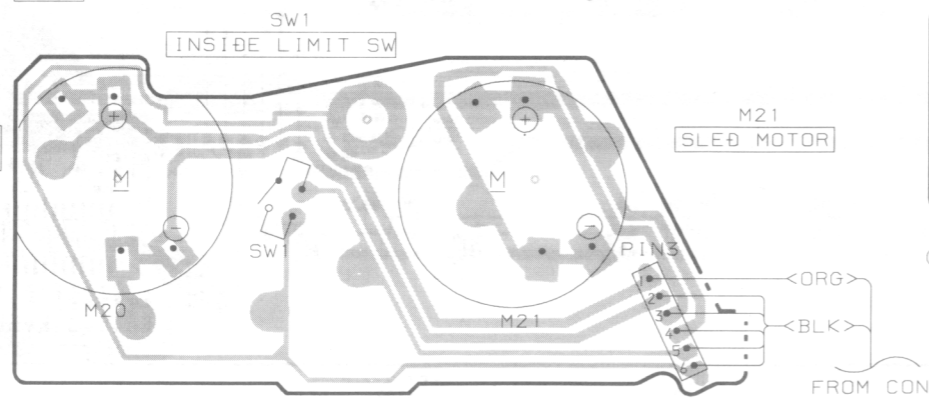
M LED C.B



LE0701
LE0702
LE0703
CD TRAY LIGHTING

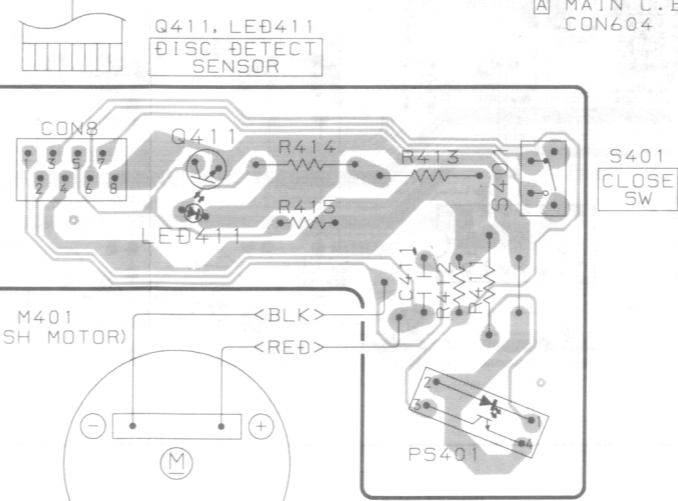
CABI. OPTICAL
DIGITAL OUT (OPTICAL)

P CD MOTOR C.B



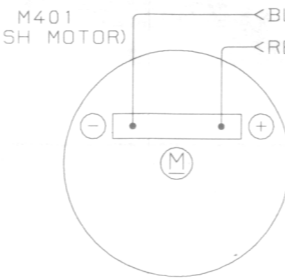
M20
SPINDLE MOTOR

M21
SLED MOTOR

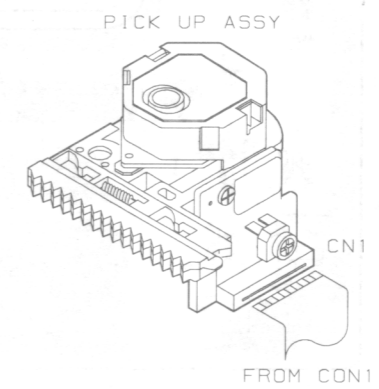


S603
DOWN SW

FROM MAIN C.B
CON604



M401
DISH MOTOR

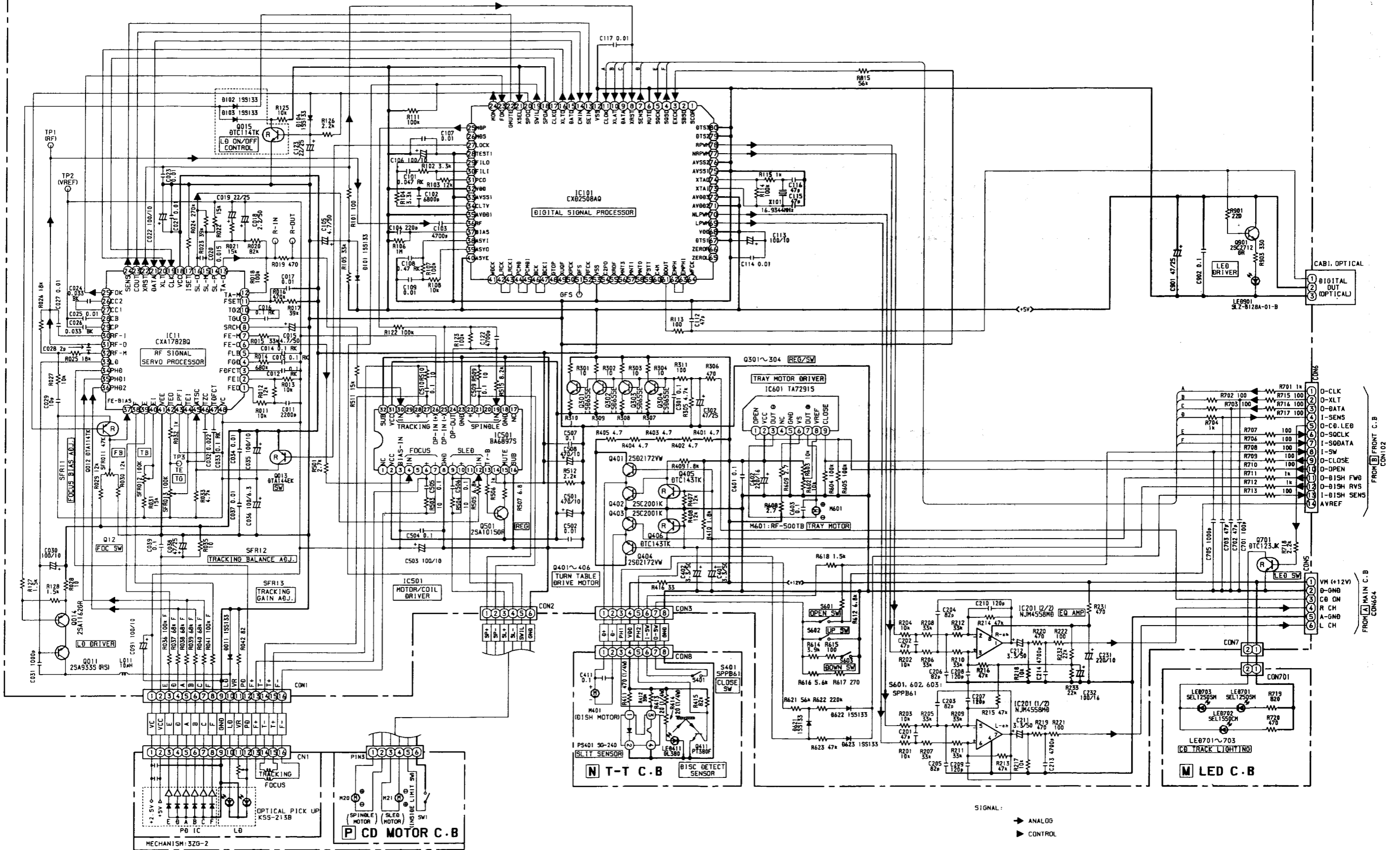


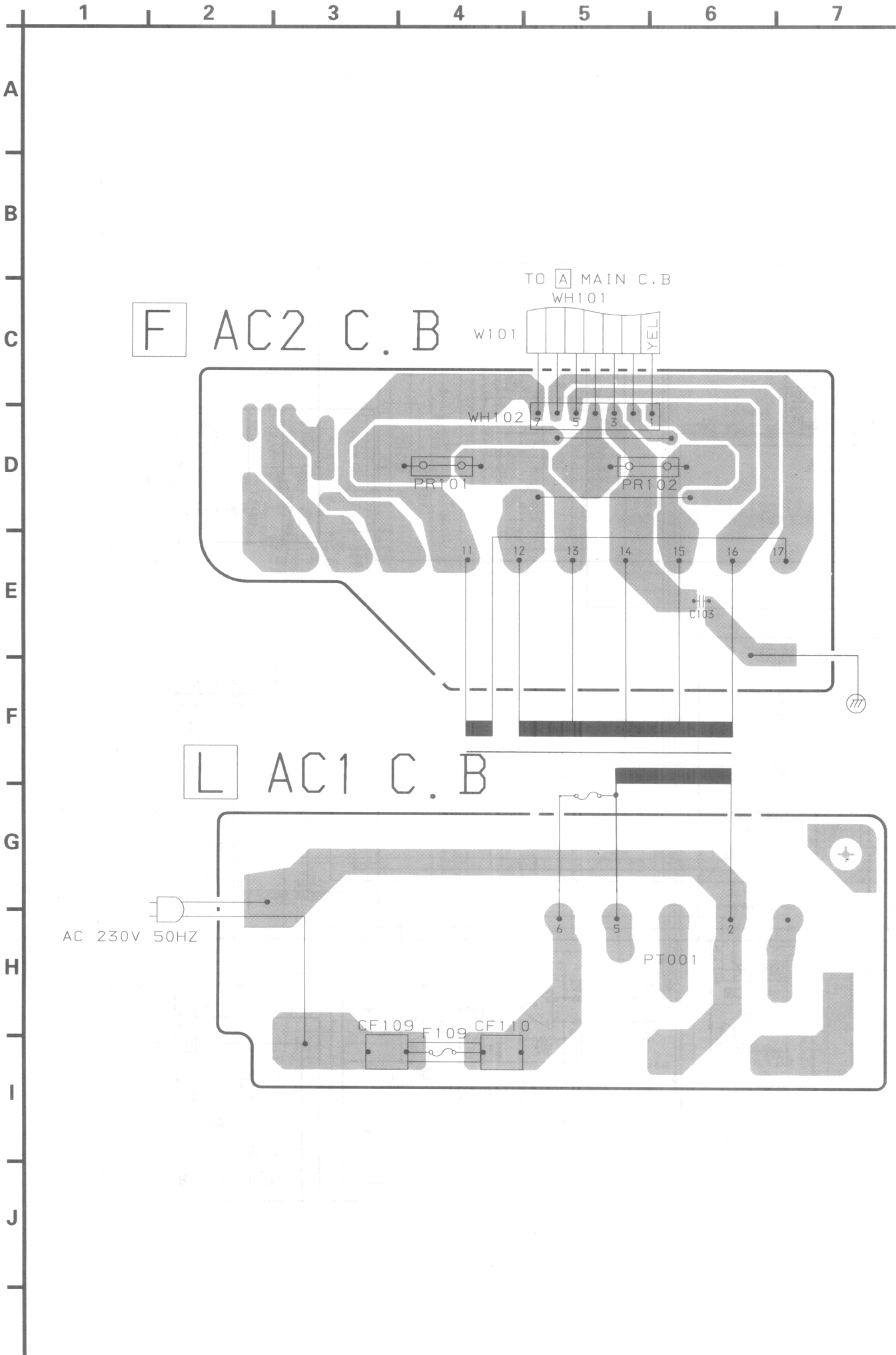
PICK UP ASSY

FROM CON1

N T-T C.B

K CD MAIN C.B





ACCESSORIES / PACKAGE LIST

If can't understand for Description please kindly refer to "REFERENCE NAME LIST".

REF. NO.	PART NO.	KANRI NO.	DESCRIPTION
2	86-MA4-904-019		IB, E(EGFSI)NE<2700EZ>
2	86-MA4-905-019		IB, E(EGFSI)NE ZM2750<2750EZ>

REFERENCE NAME LIST

ELECTRICAL SECTION

DESCRIPTION	REFERENCE NAME
ANT	ANTENNAS
C-	CHIP
C-CAP	CAP, CHIP
C-CAP TN	CAP, CHIP TANTALUM
C-COIL	COIL, CHIP
C-DI	DIODE, CHIP
C-DIODE	DIODE, CHIP
C-FET	FET, CHIP
C-FOTR	FILTER, CHIP
C-JACK	JACK, CHIP
C-LED	LED, CHIP
C-RES	RES, CHIP
C-SFR	SFR, CHIP
C-SLIDE SW	SLIDE SWITCH, CHIP
C-SW	SWITCH, CHIP
C-TR	TRANSISTOR, CHIP
C-VR	VOLUME, CHIP
C-ZENER	ZENER, CHIP
CAP, CER	CAP, CERA-SOL
CAP, E	CAP, ELECT
CAP, M/F	CAP, FILM
CAP, TC	CAP, CERA-SOL
CAP, TC-U	CAP, CERA-SOL SS
CAP, TN	CAP, TANTALUM
CERA FIL	FILTER, CERAMIC
CF	FILTER, CERAMIC
DL	DELAY LINE
E/CAP	CAP, ELECT
FILT	FILTER
FLTR	FILTER
FUSE RES	RES, FUSE
MOT	MOTOR
P-DIODE	PHOTO DIODE
P-SNSR	PHOTO SENSER
P-TR	PHOTO TRANSISTOR
POLY VARI	VARIABLE CAPACITOR
PPCAP	CAP, PP
PT	POWER TRANSFORMER
PTR, RES	PTR, MELF
RC	REMOTE CONTROLLER
RES NF	RES, NON-FLAMMABLE
RESO	RESONATOR
SHLD	SHIELD
SOL	SOLENOID
SPKR	SPEAKER
SW, LVR	SWITCH, LEVER
SW, RTRY	SWITCH, ROTARY
SW, SL	SWITCH, SLIDE
TC CAP	CAP, CERA-SOL
THMS	THERMISTOR
TR	TRANSISTOR
TRIMER	CAP, TRIMMER
TUN-CAP	VARIABLE CAPACITOR
VIB, CER	RESONATOR, CERAMIC
VIB, XTAL	RESONATOR, CRYSTAL
VR	VOLUME
ZENER	DIODE, ZENER

MECHANICAL SECTION

DESCRIPTION	REFERENCE NAME
ADHESHIVE	SHEET ADHESHIVE
AZ	AZIMUTH
BAR-ANT	BAR-ANTENNA
BAT	BATTERY
BATT	BATTERY
BRG	BEARING
BTN	BUTTON
CAB	CABINET
CASS	CASSETTE
CHAS	CHASSIS
CLR	COLLAR
CONT	CONTROL
CRSR	CURSOR
CU	CUSHION
CUSH	CUSHION
DIR	DIRECTION
DUBB	DUBBING
FL	FRONT LOADING
FLY-WHL	FLYWHEEL
FR	FRONT
FUN	FUNCTION
G-CU	G-CUSHION
HDL	HANDOL
HIMERON	CLOTH
HINGE, BAT	HINGE, BATTERY
HLDR	HOLDER
HT-SINK	HEAT SINK
IB	INSTRUCTION BOOKLET
IDLE	IDLER
IND, L-R	INDICATOR, L-R
KEY, CONT	KEY, CONTROL
KEY, PRGM	KEY, PROGRAM
KNOB, SL	KNOB, SLIDE
LBL	LABEL
LID, BATT	LID, BATTERY
LID, CASS	LID, CASSETTE
LVR	LEVER
P-SP	P-SPRING
PANEL, CONT	PANEL, CONTROL
PANEL, FR	PANEL, FRONT
PRGM	PROGRAM
PULLY, LOAD MO	PULLY, LOAD MOTOR
RBN	RIBBON
S-	SPECIAL
SEG	SEGMENT
SH	SHEET
SHLD-SH	SHIELD-SHEET
SL	SLIDE
SP	SPRING
SP-SCREW	SPECIAL-SCREW
SPACER, BAT	SPACER, BATTERY
SPR	SPRING
SPR-P	P-SPRING
SPR-PC-PUSH	P-SPRING, C-PUSH
T-SP	T-SPRING
TERM	TERMINAL
TRIG	TRIGGER
TUN	TUNING
VOL	VOLUME
W	WASHER
WHL	WHEEL
WORM-WHL	WORM-WHEEL

サービス技術ニュース	
番号	連絡内容
G- -	
G- -	
G- -	

アイワ株式会社
AIWA CO.,LTD.

9301978

Tokyo Japan