



Free service manuals
 Gratis schema's
 Digitized by

www.freeservicemanuals.info

MODEL AA-A35/L

TABLE OF CONTENTS

1. SCHEMATIC DIAGRAM OF ICs	2
2. CONTROL BLOCK DIAGRAM AA-A35/L	6
3. TUNER BLOCK DIAGRAM AA-A35/L	7
4. CONNECTION DIAGRAM AA-A35/L	8
5. MAIN AMP PC BOARD, AND OTHERS AA-A35/L	9
6. CONTROL/FLD SCHEMATIC DIAGRAM AA-A35/L	10
7. CONTROL/FLD PC BOARD AA-A35/L	11
8. TUNER SCHEMATIC DIAGRAM AA-A35	12
9. TUNER PC BOARD AA-A35	13
10. TUNER SCHEMATIC DIAGRAM AA-A35L	14
11. TUNER PC BOARD AA-A35L	15
12. PRE AMP SCHEMATIC DIAGRAM AA-A35/L	16
13. PRE AMP PC BOARD AA-A35/L	17
14. MPX SCHEMATIC DIAGRAM AA-A35/L	18
15. FRONT END SCHEMATIC DIAGRAM AA-A35/L	18
16. MPX PC BOARD AA-A35/L	19
17. FRONT END PC BOARD AA-A35/L	19

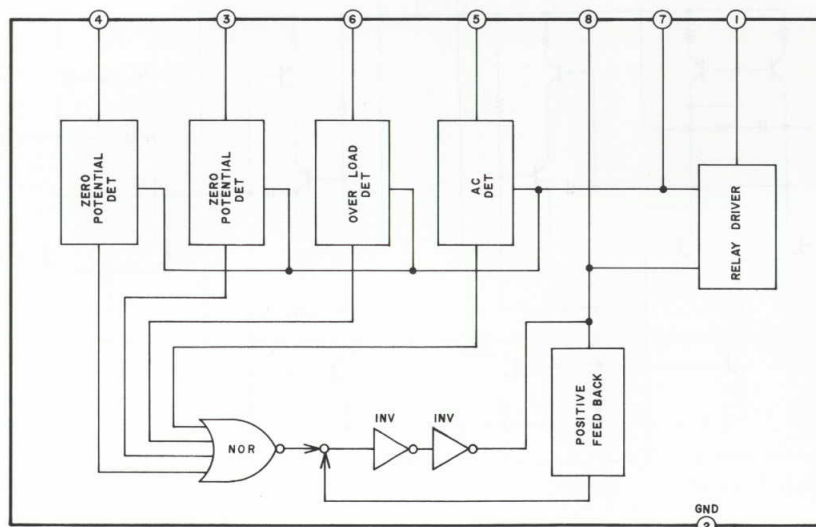
A1007A

Pin No.	Functions	Pin No.	Functions
1	DIGIT 0	29	CARTRIDGE (MM/MC) SELECTION INPUT MC → "H" MM → "L"
2	DIGIT 1		
3	DIGIT 2		
4	DIGIT 3		
5	DIGIT 4		
6	DIGIT 5		
	} STROBE FOR KEY MATRIX CONVERTER FL DISPLAY	30	TEST
		31	X _{IN}
		32	X _{OUT}
		33	RESET INPUT
7	SEG 12	34	HOLD INPUT (BACK UP)
8	SEG 13		
9	SEG 11		
10	SEG 10		
11	SEG 9		
12	SEG 8		
	} FL DISPLAY SEGMENT DRIVE	35	INPUT STATUS OUTPUT, TUNER → "L" PHONO/CD → "H"
13	INPUT SELECTOR DATA FOR ANALOGUE SW	36	TUNER OPERATION PULSE INPUT, Switching input selector to TUNER whenever receives the pulse (6 m sec) from Tuner MI-COM (IC A1007T)
14	INPUT SELECTOR CLOCK FOR ANALOGUE SW		
15	INPUT SELECTOR STROBE FOR ANALOGUE SW	37	MM/MC CIRCUIT SWITCHING OUTPUT.
16	STROBE FOR ELECTRONIC VOLUME (MAIN, BASS, TREBLE VOLUME)	38	DATA DETECTION FROM A/D CONVERTER
17	SEG 7	39	END DETECTION FROM A/D CONVERTER
18	SEG 6		
19	SEG 5		
20	SEG 4		
	} FL DISPLAY SEGMENT DRIVE	40	ST-WR (CONVERSION START) OUTPUT FOR A/D CONVERTER (LC-7910) DATA OUTPUT FOR MAIN, BASS, TREBLE CONTROL VOLUME IC (TC9176P, TC9156P × 2)
21	GND	41	CE (DATA CLOCK) OUTPUT FOR A/D CONVERTER (LC7910) CLOCK OUTPUT FOR MAIN, BASS TREBLE, CONTROL VOLUME IC (IC9176P, TC9150P × 2)
22	SEG 3		
23	SEG 2		
24	SEG 1		
25	SEG 0		
	} FL DISPLAY SEGMENT DRIVE	42	VDD +5V
26	} KEY MATRIX INPUT		
27			
28			

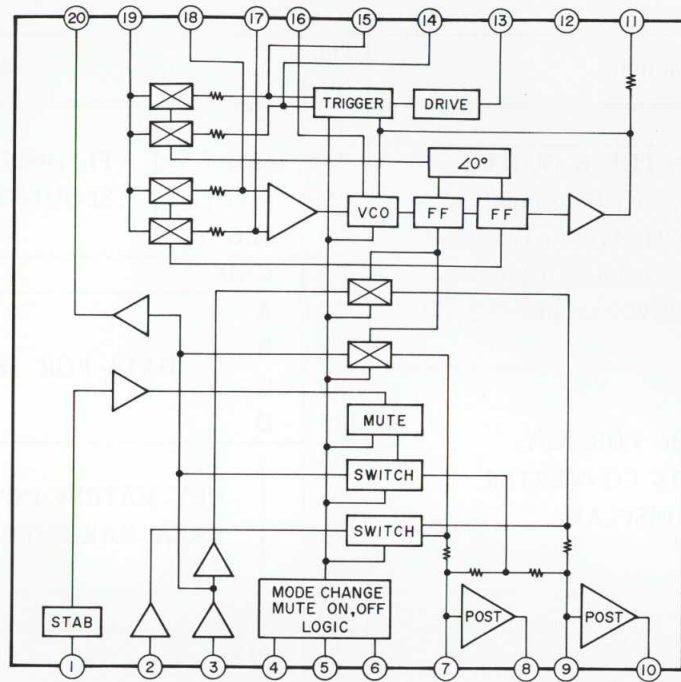
A1007T

Pin No.	Functions	Pin No.	Functions	
1	NOT USED	17	SEG e	
2	TUNER OPERATION PULSE OUTPUT, Output 6 msec pulse to switch the input selector of Amp MI-COM (A1007A) to Tuner when operating Tuner section by depressing BAND, TUNER UP/DOWN or PRESET CH buttons.	18	SEG f	
3	DIGIT 0 } DIGIT 1 } DIGIT 2 } STROBE FOR KEY DIGIT 3 } MATRIX CONVERTER DIGIT 4 } & FL DISPLAY DIGIT 5 }	19	SEG g	
4		20	SEG n	
5		21	GND	
6		22	A	
7		23	B	
8		24	C	
9	SEG a	25	D	
10	SEG b	26	KEY MATRIX INPUT and AREA JUDGEMENT INPUT	
11	SEG c	27		
12	SEG d	28		
		29		
13	FM MODE SELECTOR OUTPUT FORCED MONO → "H"	30	GND	
14	TUNER OUT (L & R) MUTE OUTPUT, MUTE at "L"	31	X _{IN}	
15	DETECTOR INPUT FOR THE STATUS OF AMP SECTION MI-COM (A1007A) INPUT SELECTOR. PHONO/CD → "H", TUNER → "L"	32	X _{OUT}	
16		Becomes level "H" 1 second after power is turned on ("H" after Reset/Back up cancellation) For the models AA-A35/A45, this terminal is used for the synchronization between static display (Bar meter) and Dynamic display when power is turned on.	33	RESET INPUT
			34	HOLD INPUT (BACK UP)
			35	DETECTOR INPUT FOR THE PRESET CH NUMBER, 20CH → "L", 16CH → "H"
		36	FM Band Designation Output	
		37	MW Band Designation Output	
		38	LW Band Designation Output	
		39	LOAD OUTPUT TERMINAL to PLL IC (T9125BP)	
		40	DETECTOR INPUT FOR THE AUTO STOP AT SCAN MODE	
		41	Not used and Connect to +B LINE	
		42	VDD (+5V)	

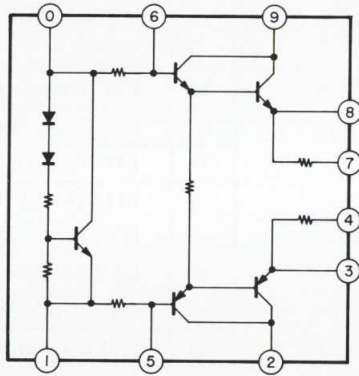
HA12002



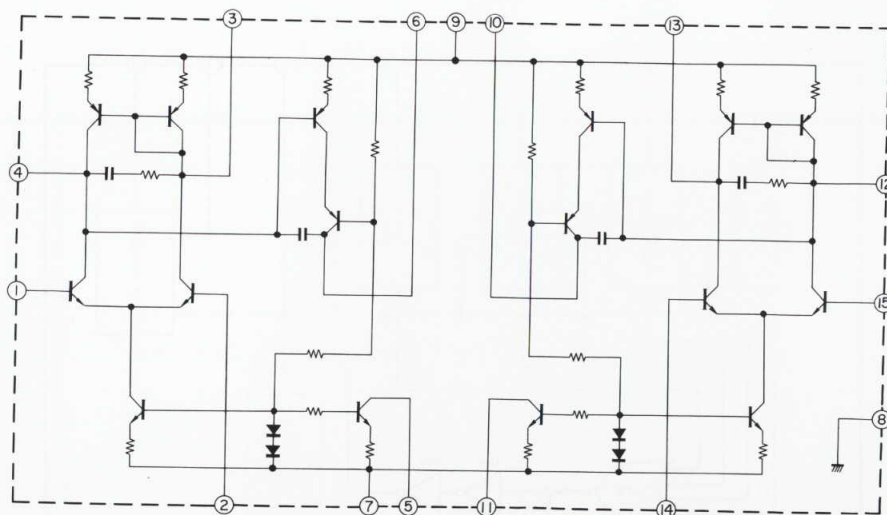
LA3390



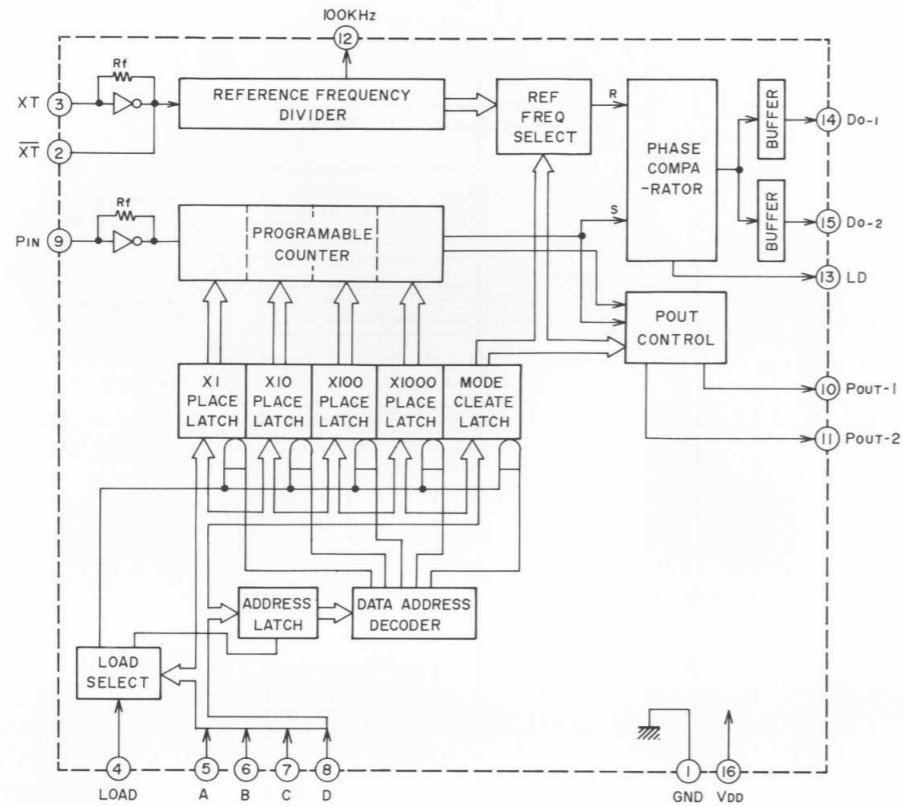
STK1050



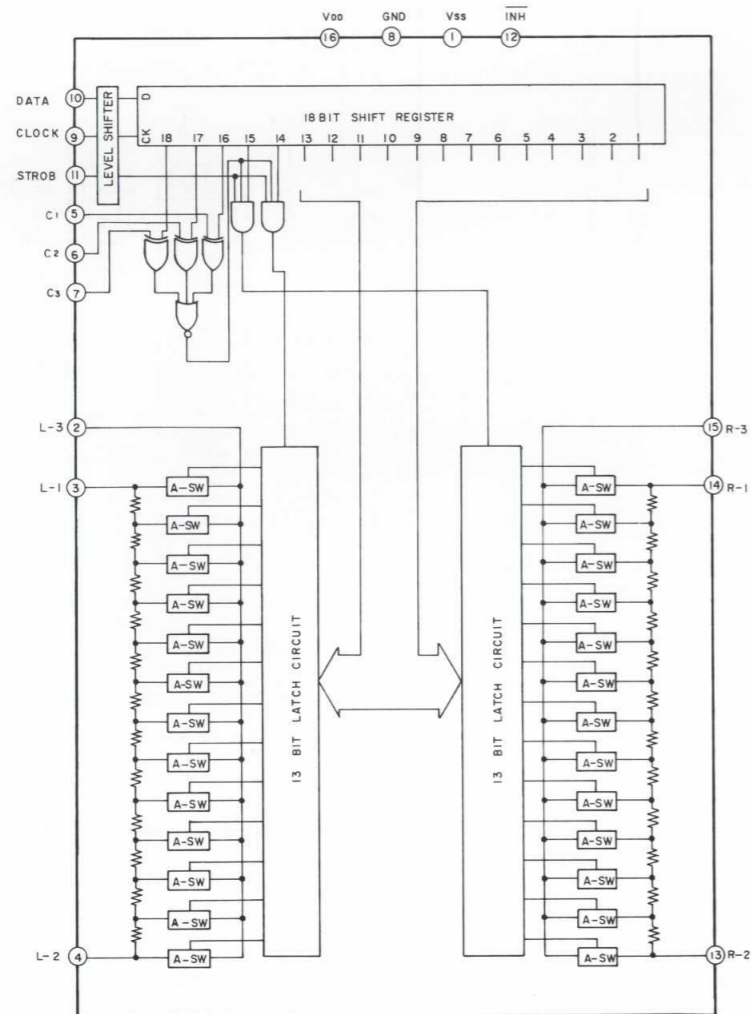
STK3042



TC9125BP

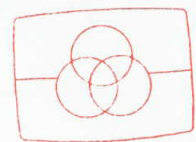


TC9156P



TC9176

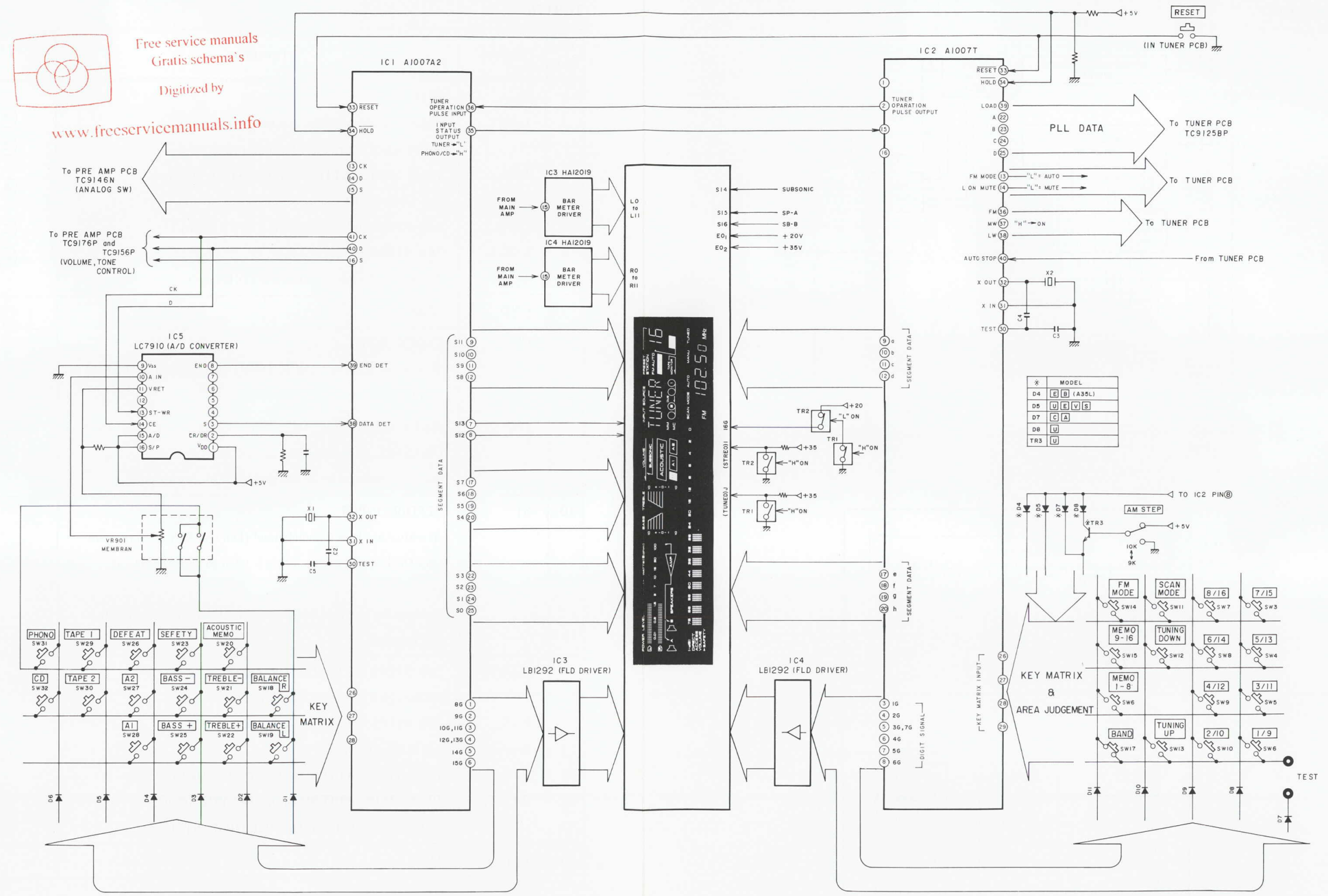
Pin No.	Symbol	Functions	Remarks
1	V _{SS}	-15V	
2	L-OUT ₁	10dB STEPS ATTENUATOR OUTPUT (Lch) Audio signal attenuate 0 to 70dB (10dB steps)	(2)
3	L-IN ₁	10 dB STEPS ATTENUATOR INPUT (Lch)	(3)
4	A-GND	AC GND (Lch)	(4)
5	L-IN ₂	2dB STEPS ATTENUATOR INPUT (Lch)	(5)
6	L-OUT ₂	2dB STEPS ATTENUATOR OUTPUT (Lch) Audio signal attenuate 0 to 8db (2dB steps)	(6)
7	GND	GND	
8	CK	CLOCK INPUT, This terminal is the CLOCK INPUT to read data of the DATA terminal.	
9	DATA	DATA INPUT FOR THE ATTENUATION LEVEL AND CHANNEL (Lch and Rch) SELECTION DATA, Data is composed to 20 bits and input by clock signal.	
10	ST	STROBE INPUT Attenuation Levels and channel (Lch and Rch) selection are read DATA, CK terminal that is latch to activate "H" at this terminal. Holding the previous data, when "H" level doesn't apply to this terminal.	
11	R-OUT ₂	2dB STEPS ATTENUATOR OUTPUT (Rch) Audio signal attenuate 0 to 8dB (2dB steps)	(11)
12	R-IN ₂	2dB STEPS ATTENUATOR INPUT (Rch)	(12)
13	A-GND	AC GND (Rch)	(13)
14	R-IN ₁	10dB STEPS ATTENUATOR INPUT (Rch)	(14)
15	R-OUT ₁	10dB STEPS ATTENUATOR OUTPUT (Rch) Audio signal attenuate 0 to 70dB (10dB steps)	(15)
16	V _{DD}	+15V	



Free service manuals
Gratis schema's

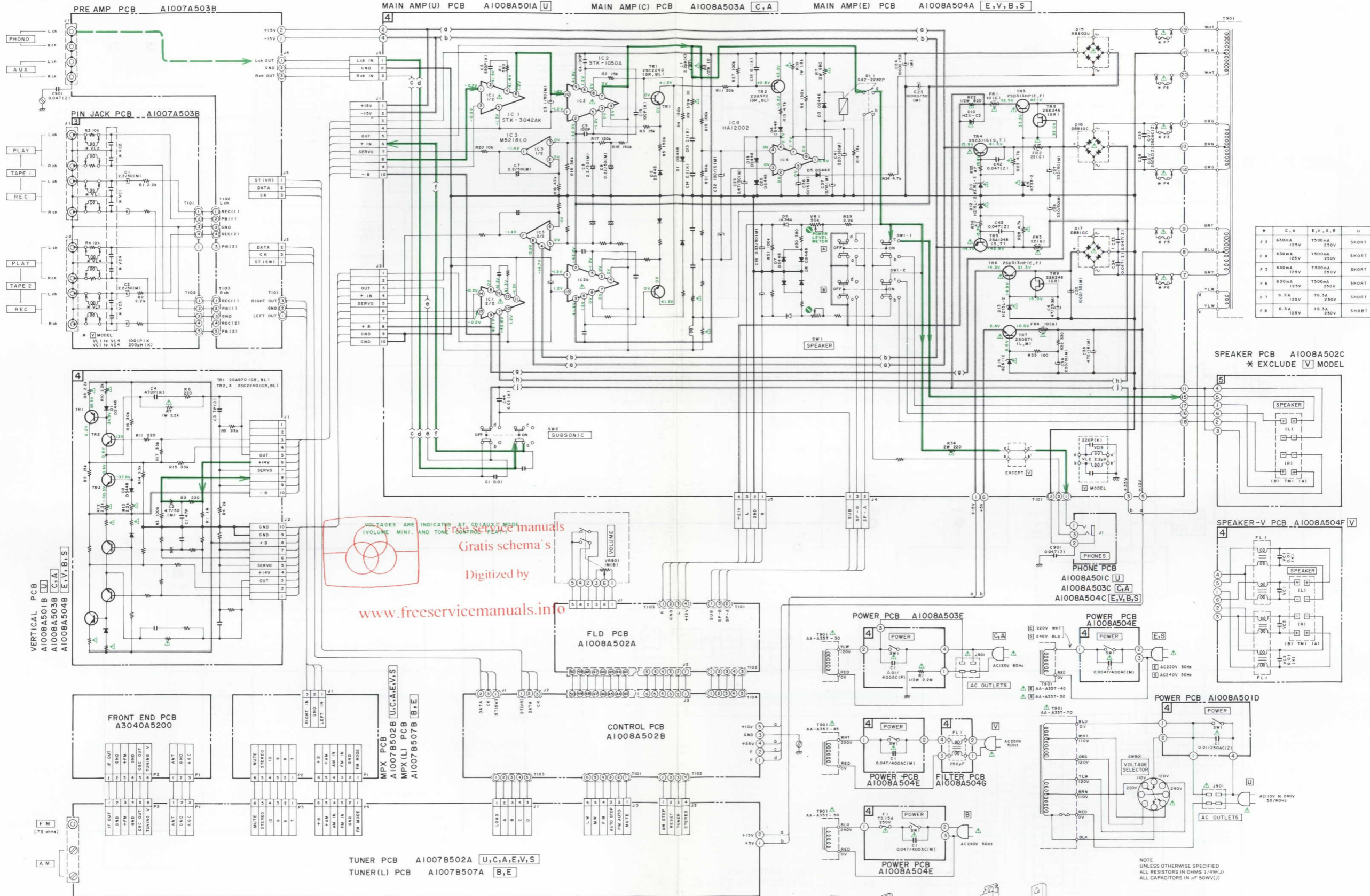
Digitized by

www.freeservicemanuals.info



AA-A35/L CONTROL
BLOCK DIAGRAM
No.2-1 84060IA

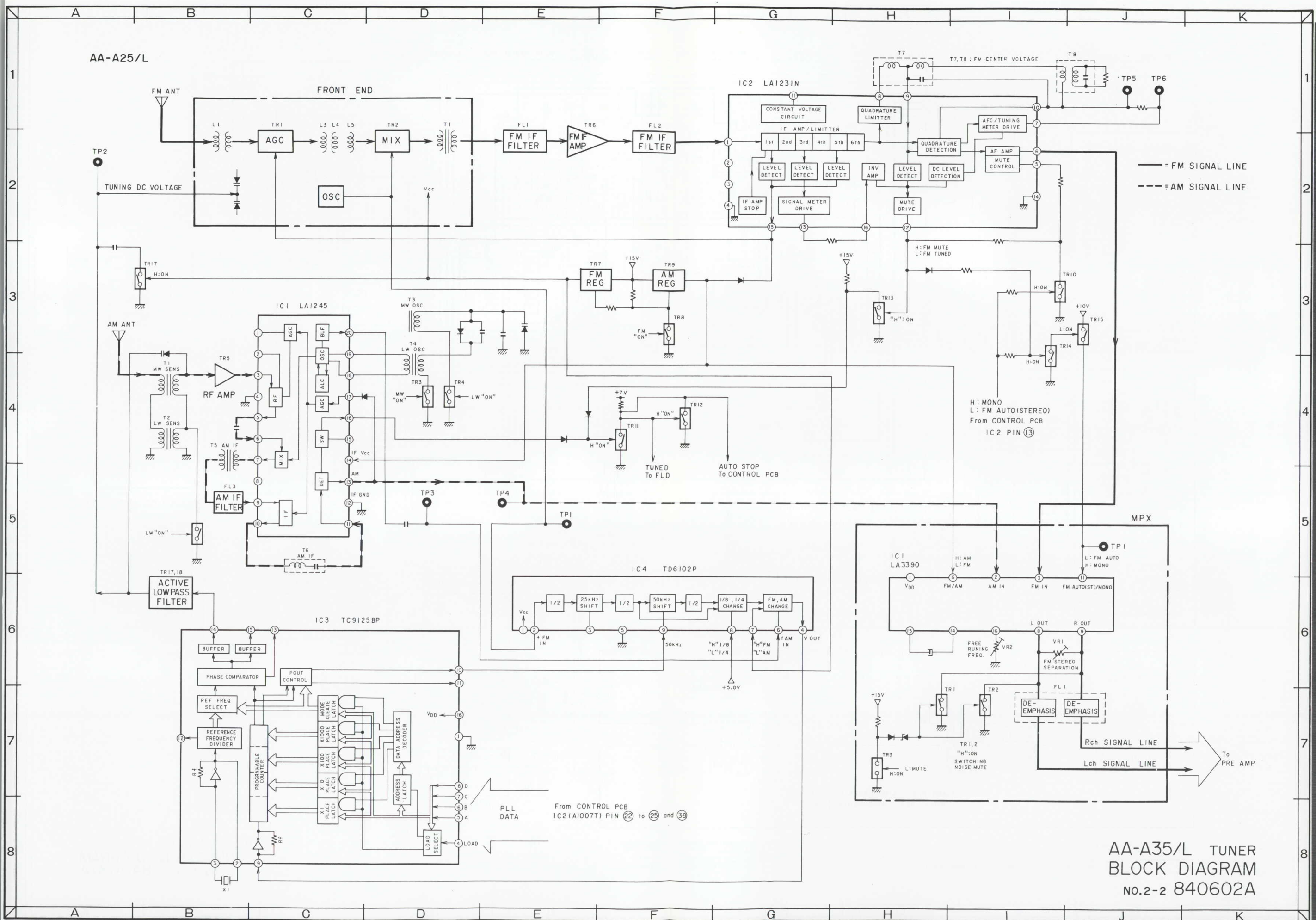
AA-A35/L



www.freeservicemanuals.info
 Gratis schema's
 Digitized by
 www.freeservicemanuals.info



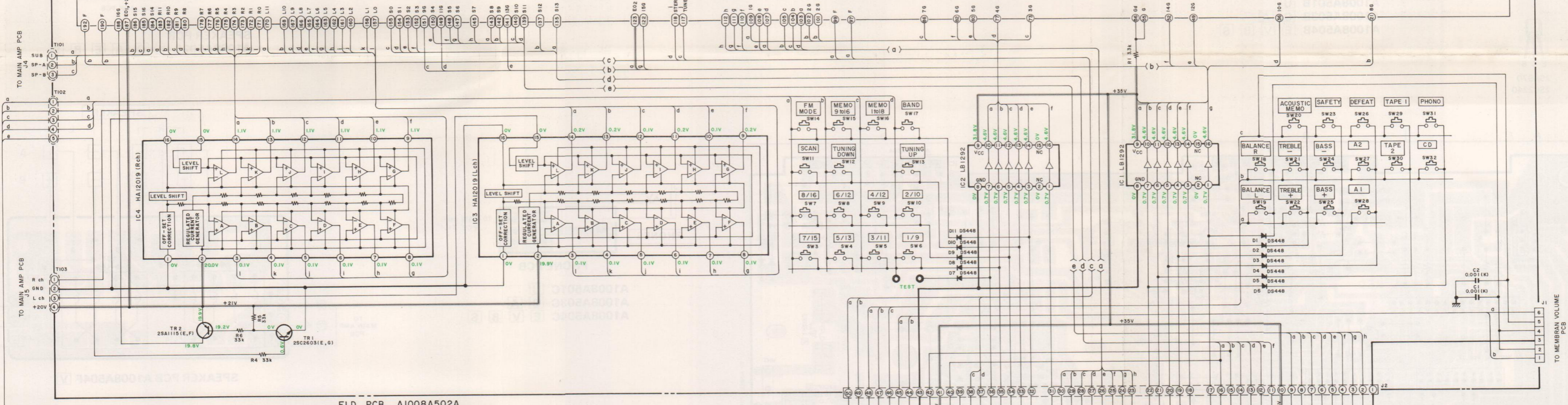
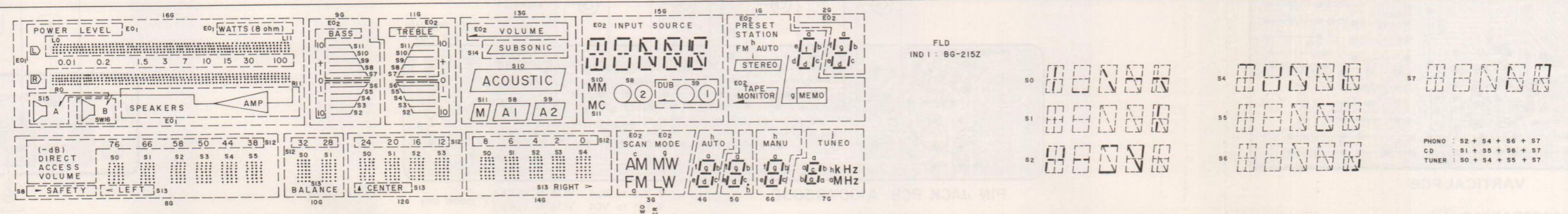
AA-A35/L
 CONNECTION DIAGRAM
 NO. 7 - I 840631A



AA-A35/L TUNER
 BLOCK DIAGRAM
 No.2-2 840602A

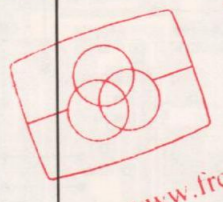
AA-A35/L

2

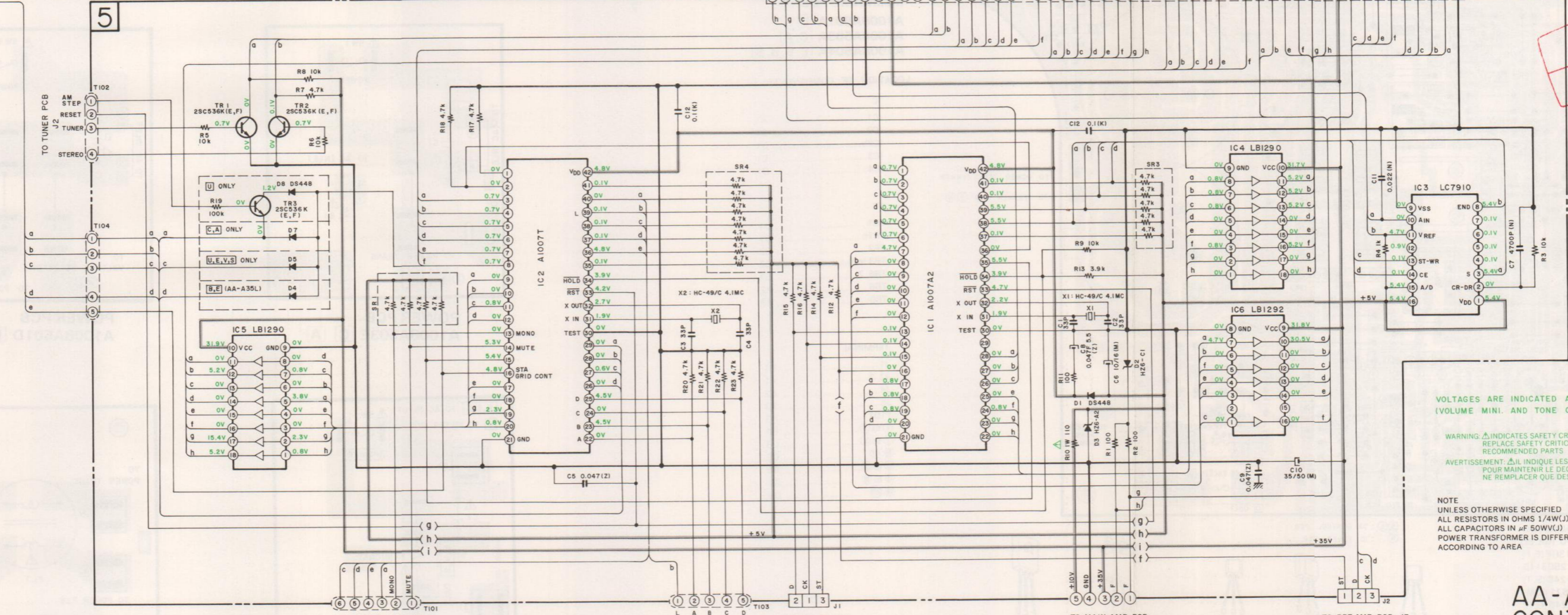


FLD PCB A1008A502A CONTROL PCB A1008A502B

Free service manuals
 Gratis schema's
 Digitized by
 www.freeservicemanuals.info



5

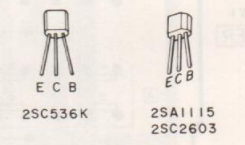


VOLTAGES ARE INDICATED AT CD (AUX) MODE.
 (VOLUME MINI AND TONE CONTROL FLAT)

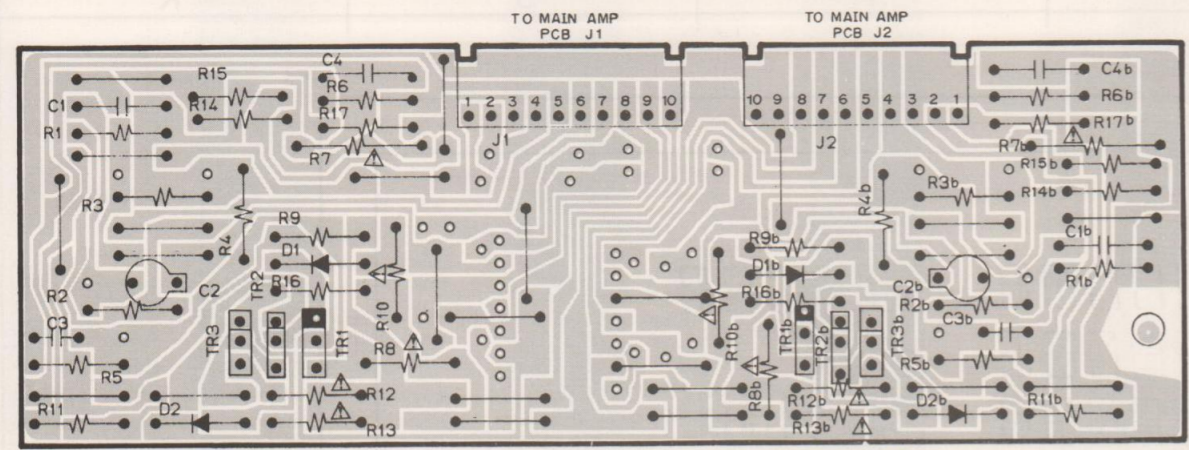
WARNING: INDICATES SAFETY CRITICAL COMPONENTS FOR CONTINUED SAFETY. REPLACE SAFETY CRITICAL COMPONENTS ONLY WITH MANUFACTURER'S RECOMMENDED PARTS.

AVERTISSEMENT: IL INDIQUE LES COMPOSANTS CRITIQUES DE SECURITE POUR MAINTENIR LE DEGRE DE SECURITE DE L'APPAREIL. NE REMPLACER QUE DES PIECES RECOMMANDEES PAR LE FABRICANT.

NOTE
 UNLESS OTHERWISE SPECIFIED
 ALL RESISTORS IN OHMS (Ω) /AWG
 ALL CAPACITORS IN μF (50WV)
 POWER TRANSFORMER IS DIFFERENT
 ACCORDING TO AREA



AA-A35/L
 CONTROL/FLD
 SCHEMATIC DIAGRAM
 No.7-2 840632A

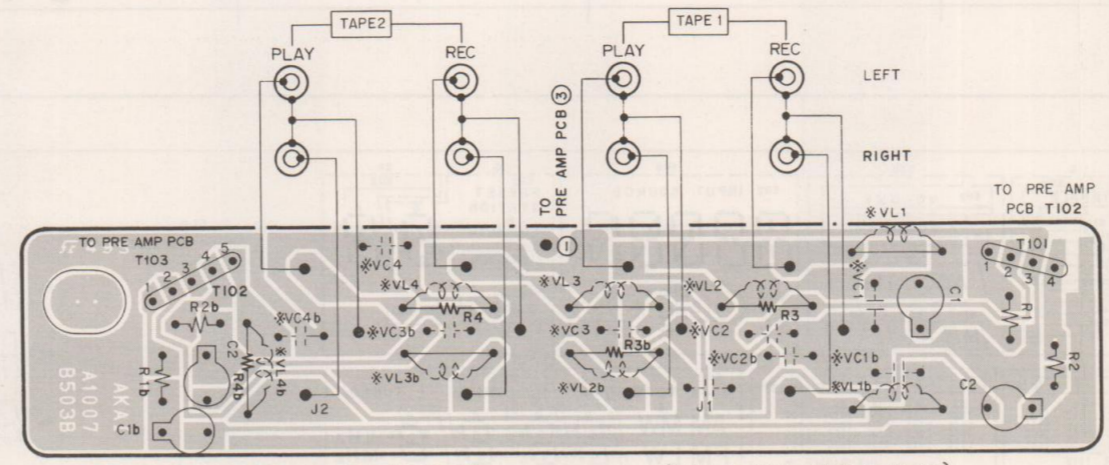


TR1..... 2SA970 (GR, BL)
 TR2, 3..... 2SC2240 (GR, BL)

VERTICAL PCB
 A1008A501B U
 A1008A503B C A
 A1008A504B E V B S

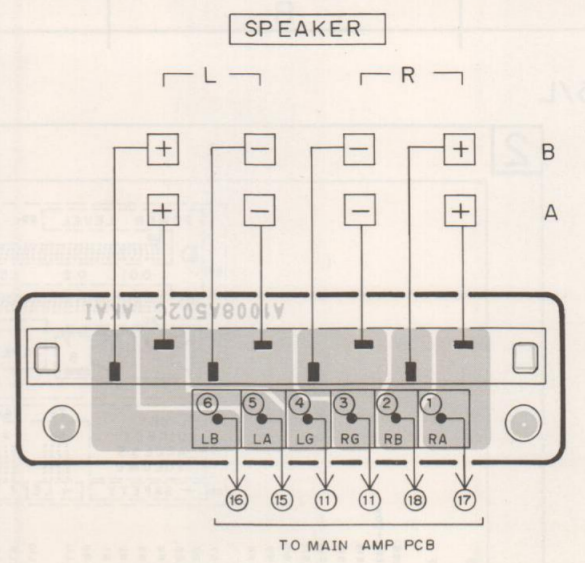


2SA970
 2SC2240

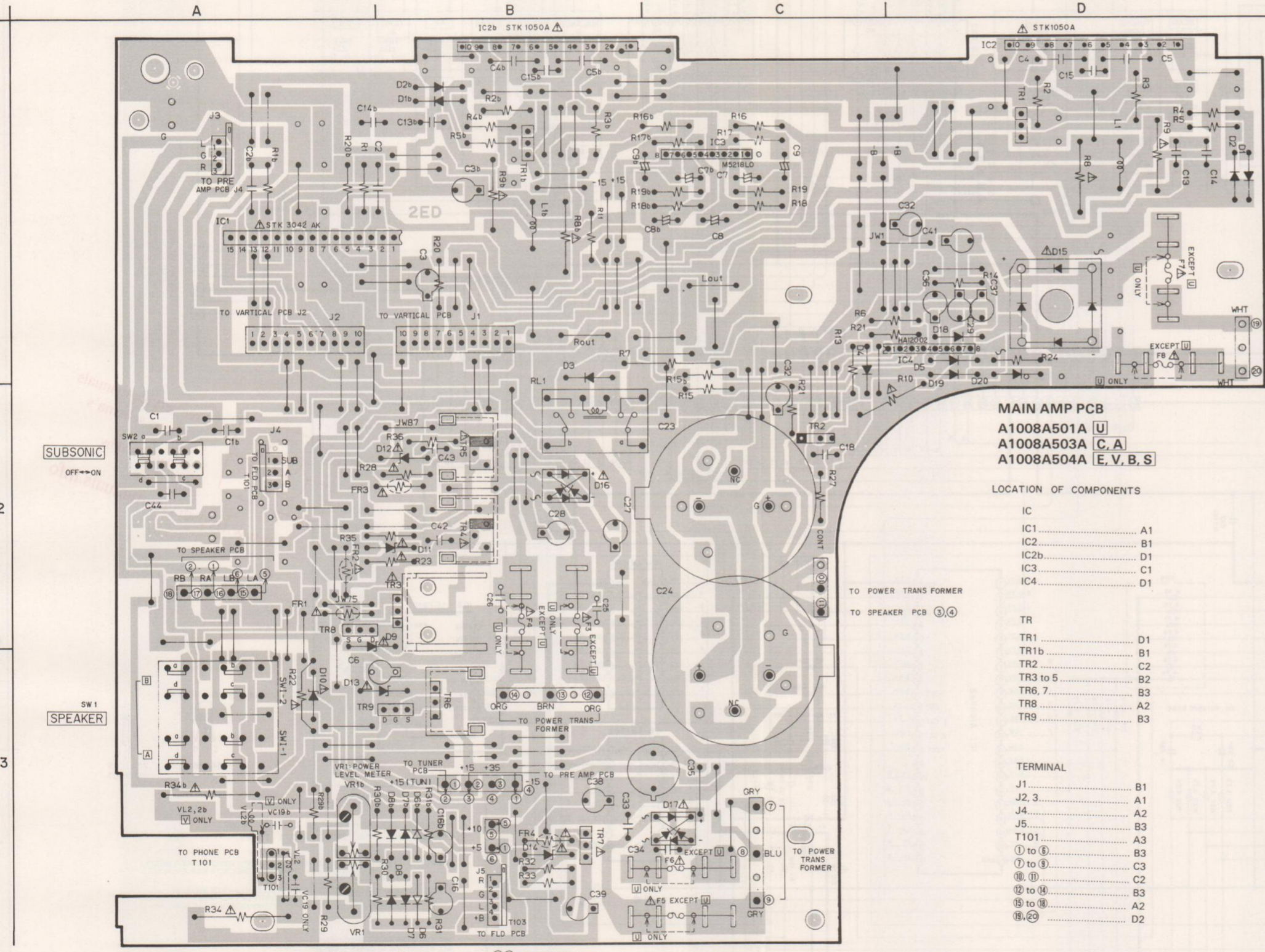


PIN JACK PCB A1007B503B

* VL1 to VL4 VL1b to VL4b } V model only
 * VC1 to VC4 VC1b to VC4b }



SPEAKER PCB A1008A502C U C A E B S



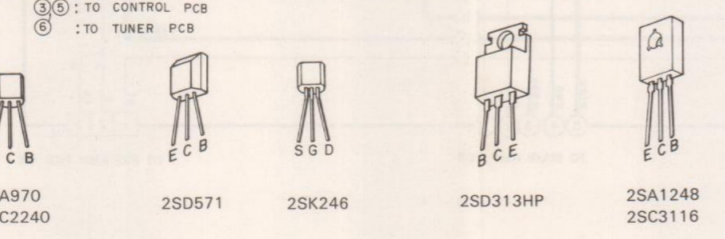
MAIN AMP PCB
 A1008A501A U
 A1008A503A C A
 A1008A504A E V B S

LOCATION OF COMPONENTS
 IC A1
 IC2 B1
 IC2b D1
 IC3 C1
 IC4 D1

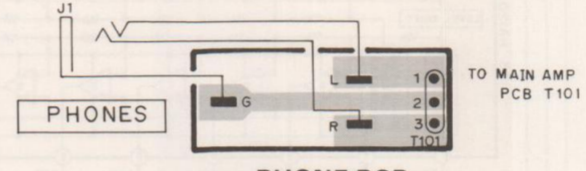
TR
 TR1 D1
 TR1b B1
 TR2 C2
 TR3 to 5 B2
 TR6, 7 B3
 TR8 A2
 TR9 B3

TERMINAL
 J1 B1
 J2, 3 A1
 J4 A2
 J5 B3
 T101 A3
 ① to ③ B3
 ⑦ to ⑨ C3
 ⑩, ⑪ C2
 ⑫ to ⑭ B3
 ⑮ to ⑰ A2
 ⑱, ⑳ D2

TR1..... 2SC2240 (GR, BL)
 TR2..... 2SA970 (GR, BL)
 TR3, 6..... 2SD313HP (E, F)
 TR4..... 2SC3116
 TR5..... 2SA1248 (S, T)
 TR7..... 2SD571 (L, M)
 TR8, 9..... 2SK246 (G, R)

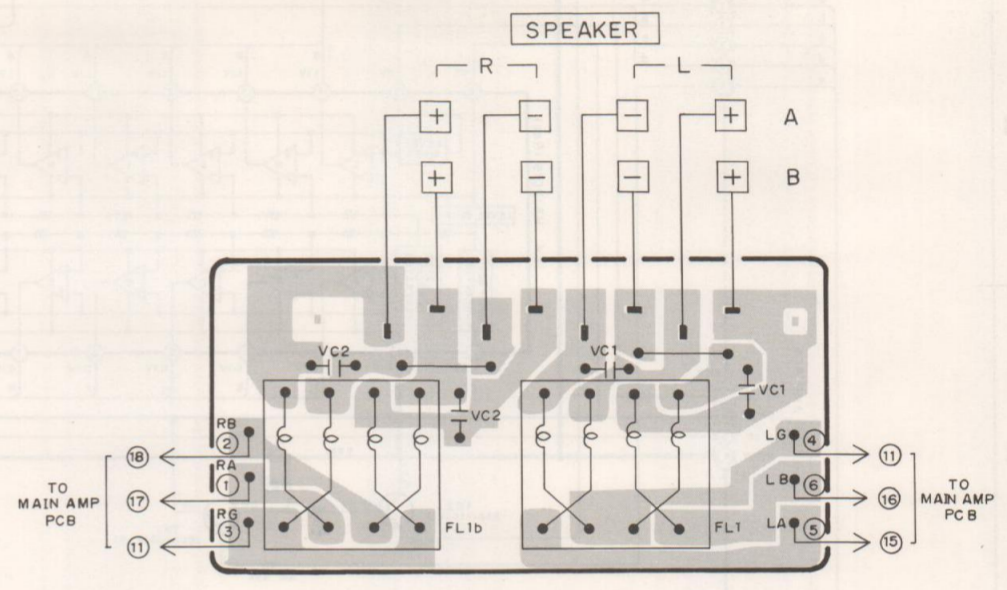


2SA970
 2SC2240
 2SD571
 2SK246
 2SD313HP
 2SA1248
 2SC3116

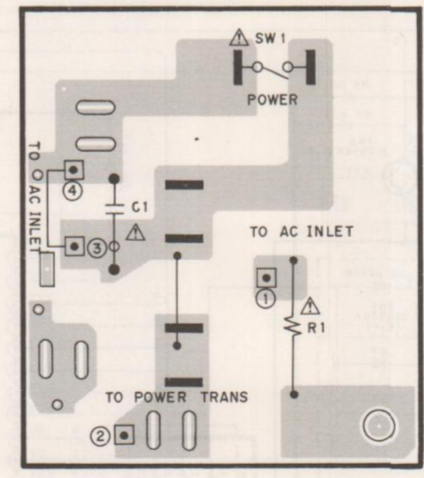


PHONE PCB

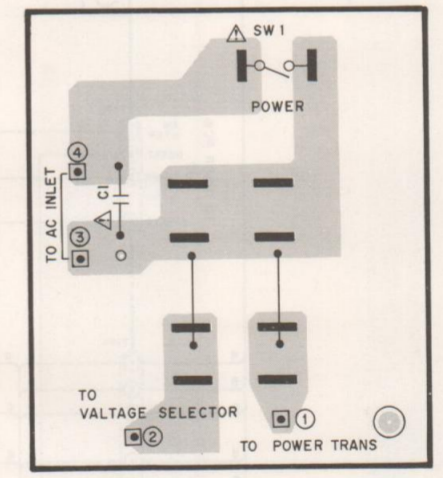
A1008A501C U
 A1008A503C C A
 A1008A504C E V B S



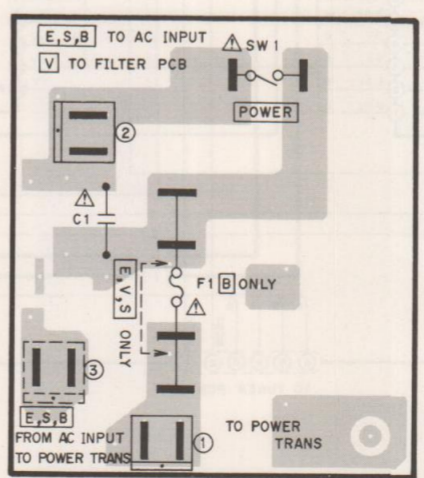
SPEAKER PCB A1008A504F V



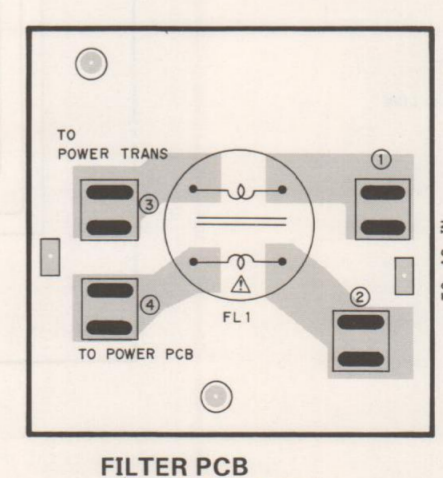
POWER PCB A1008A503E C A



POWER PCB A1008A501D U



POWER PCB A1008A504E E V B S

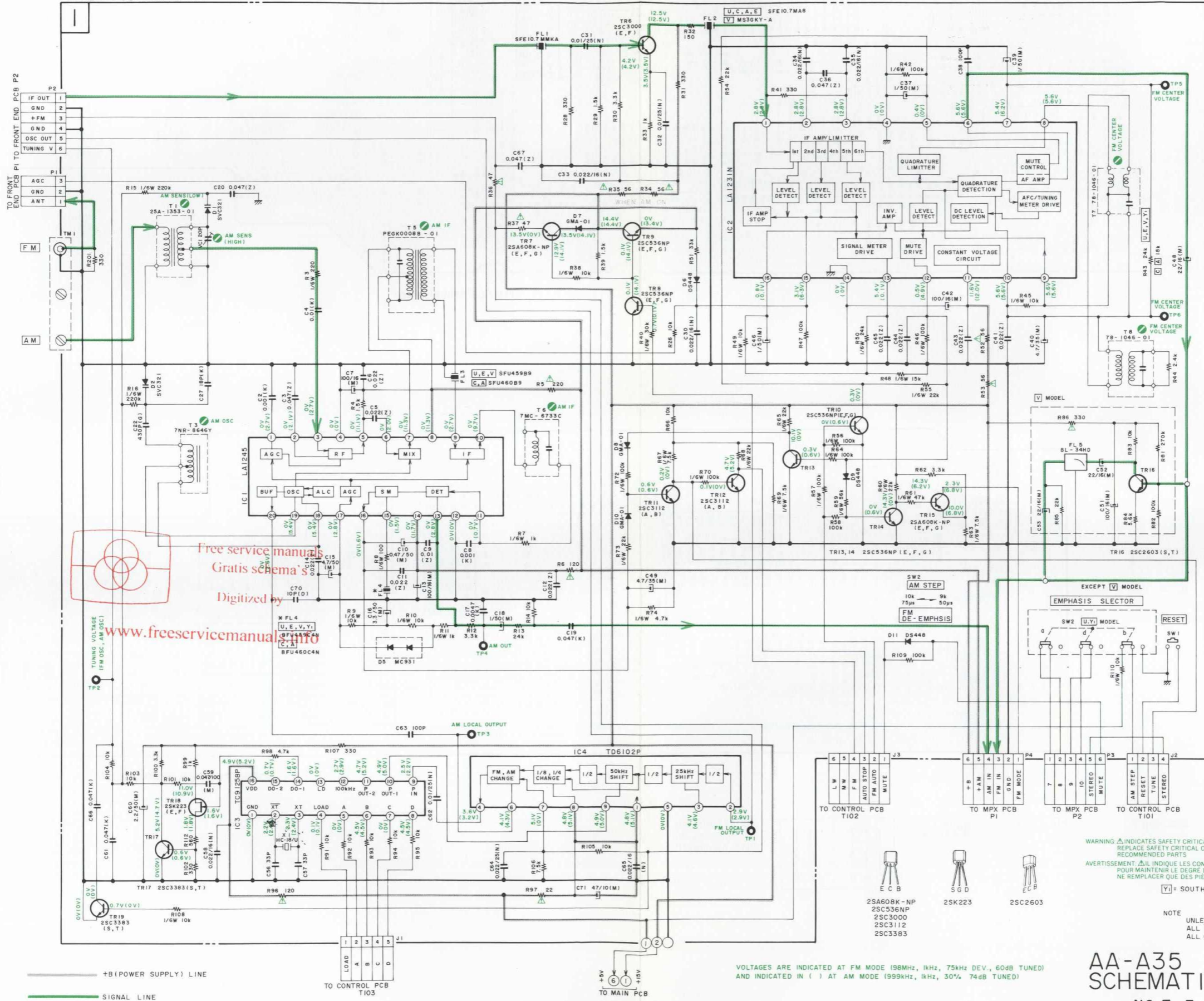


FILTER PCB A1008A504G V

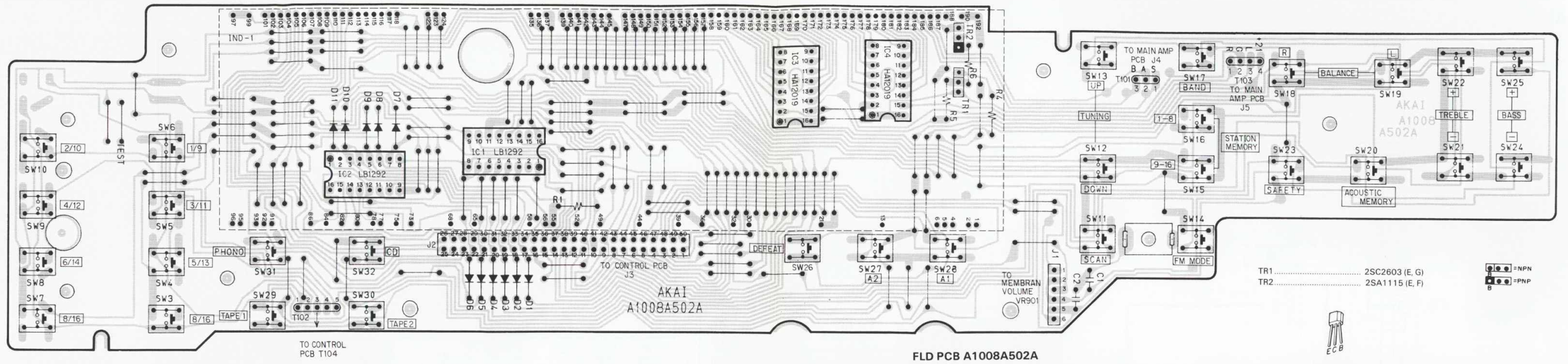
WARNING: Δ INDICATES SAFETY CRITICAL COMPONENTS FOR CONTINUED SAFETY. REPLACE SAFETY CRITICAL COMPONENTS ONLY WITH MANUFACTURER'S RECOMMENDED PARTS.
 AVERTISSEMENT: Δ ILL INDIQUE LES COMPOSANTS CRITIQUES DE SÉCURITÉ. POUR MAINTENIR LE DEGRÉ DE SÉCURITÉ DE L'APPAREIL, NE REMPLACER QUE DES PIÈCES RECOMMANDÉES PAR LE FABRICANT.

AA-A35

TUNER PCB A1007B502A



AA-A35 TUNER SCHEMATIC DIAGRAM
 NO.7-3 840605A



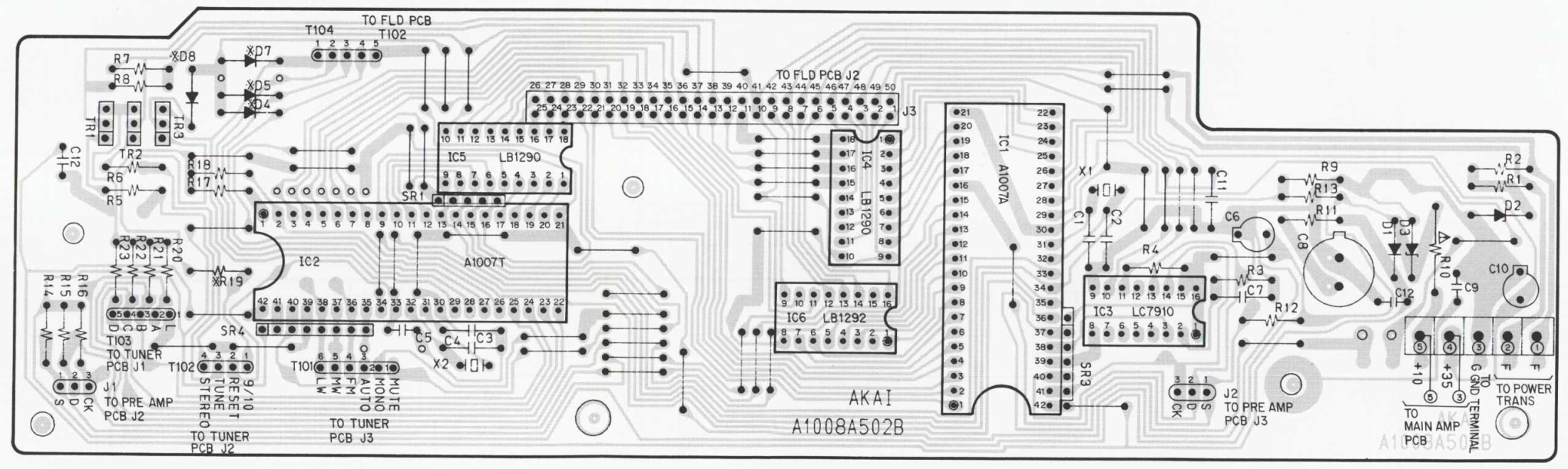
FLD PCB A1008A502A

TR1..... 2SC2603 (E, G)
 TR2..... 2SA1115 (E, F)



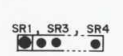
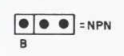
2SA1115
2SC2603

	D4	D5	D7	D8	TR3	R19
U						
C,A						
E.V.S						
A35L						

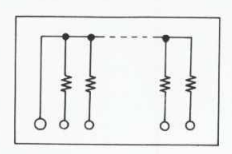


CONTROL PCB A1008A502B

TR1, 2, 3..... 2SC536K (E, F)



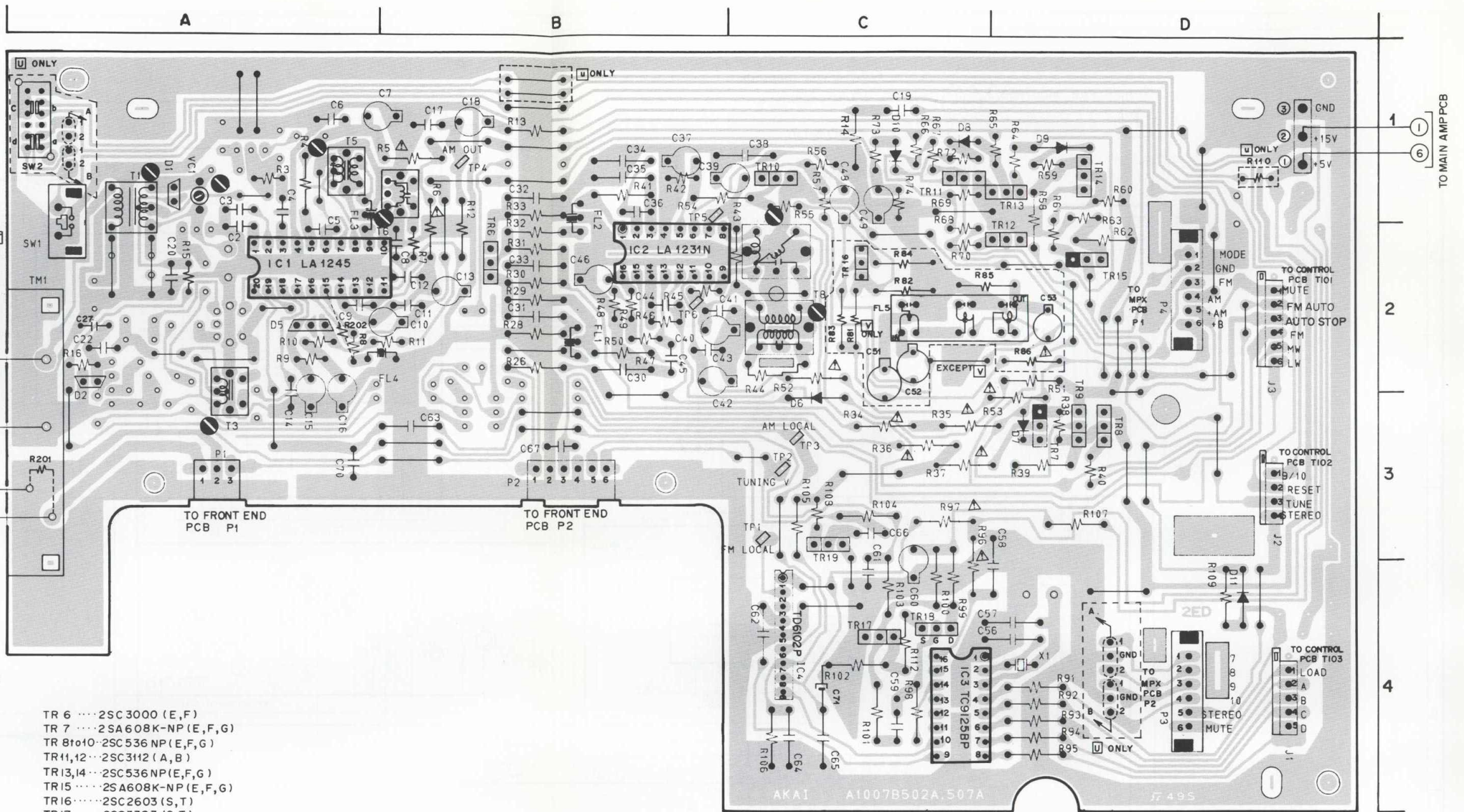
SR1 (4.7 kohmsx4)
 SR3 (4.7 kohmsx5)
 SR4 (4.7 kohmsx7)



2SC536K

ADJUSTMENT ITEM	POINT
AM SENS (HIGH)	VC1
AM SENS (LOW)	T1
AM OSC	T3
AM IF	T5,T6
FM CENTER VOLTAGE	T7,T8
FM LOCAL OUTPUT	TP1
TUNING VOLTAGE (FM, AM OSC)	TP2
AM LOCAL OUTPUT	TP3
AM OUT PUT	TP4
FM CENTER VOLTAGE	TP5,6

AM STEP
10kHz ↔ 9kHz
75µs ↔ 50µs
FM DE-EMPHASIS

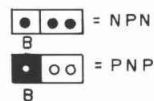


LOCATION OF COMPONENTS

- IC
IC 1 A 2
IC 2 B 2
IC 3,4 C 4
- TR
TR 6 B 2
TR 7 to 9 D 3
TR 10,11 C 1
TR 12 D 2
TR 13,14 D 1
TR 15 D 2
TR 16 C 2
TR 17,18 C 4
TR 19 C 3
- TR 6 2SC3000 (E,F)
TR 7 2SA608K-NP (E,F,G)
TR 8 to 10 2SC536 NP (E,F,G)
TR 11,12 2SC3112 (A,B)
TR 13,14 2SC536 NP (E,F,G)
TR 15 2SA608K-NP (E,F,G)
TR 16 2SC2603 (S,T)
TR 17 2SC3383 (S,T)
TR 18 2SK223 (E)
TR 19 2SC338 (S,T)

TERMINAL

- P1 A 3
P2 B 3
P3 D 4
P4 D 2
J1 D 4
J2 D 3
J3 D 2
① to ④ D 1



TUNER PCB A1007B502A U C A E V S

WARNING: ⚠ INDICATES SAFETY CRITICAL COMPONENTS FOR CONTINUED SAFETY. REPLACE SAFETY CRITICAL COMPONENTS ONLY WITH MANUFACTURER'S RECOMMENDED PARTS

AVERTISSEMENT: ⚠ IL INDIQUE LES COMPOSANTS CRITIQUES DE SÉCURITÉ. POUR MAINTENIR LE DEGRÉ DE SÉCURITÉ DE L'APPAREIL, NE REMPLACER QUE DES PIÈCES RECOMMANDÉES PAR LE FABRICANT

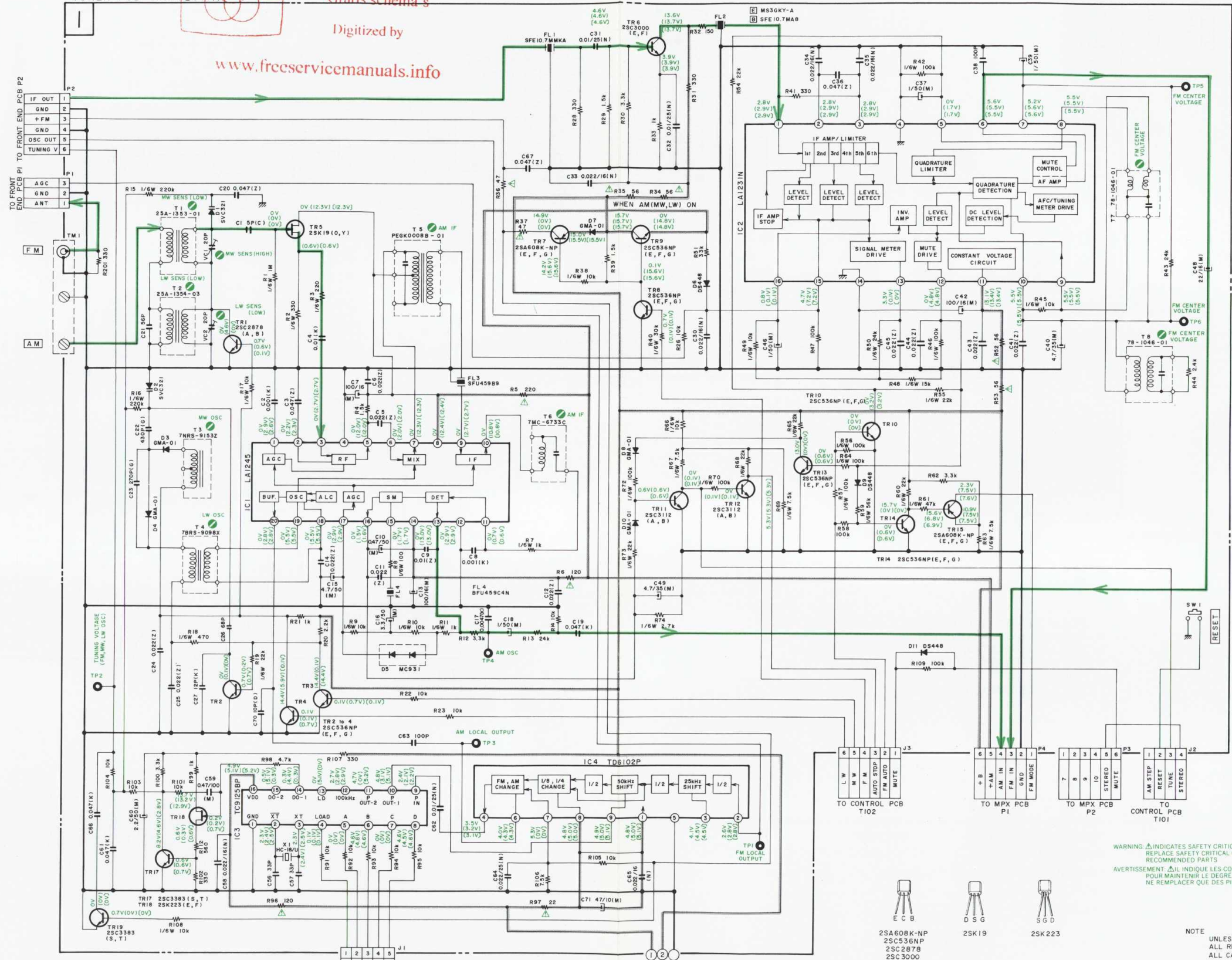
AA-A35L

TUNER PCB AI007B507A

Free service manuals
Gratis schema's

Digitized by

www.freeservicemanuals.info



— +B (POWER SUPPLY) LINE
 — SIGNAL LINE

WARNING: INDICATES SAFETY CRITICAL COMPONENTS FOR CONTINUED SAFETY. REPLACE SAFETY CRITICAL COMPONENTS ONLY WITH MANUFACTURER'S RECOMMENDED PARTS.
 AVERTISSEMENT: ΔIL INDIQUE LES COMPOSANTS CRITIQUES DE SECURITE. POUR MAINTENIR LE DEGRE DE SECURITE DE L'APPAREIL, NE REMPLACER QUE DES PIECES RECOMMANDEES PAR LE FABRICANT.

NOTE
 UNLESS OTHERWISE SPECIFIED
 ALL RESISTORS IN OHMS 1/4W (J)
 ALL CAPACITORS IN μF 50 WV (J)

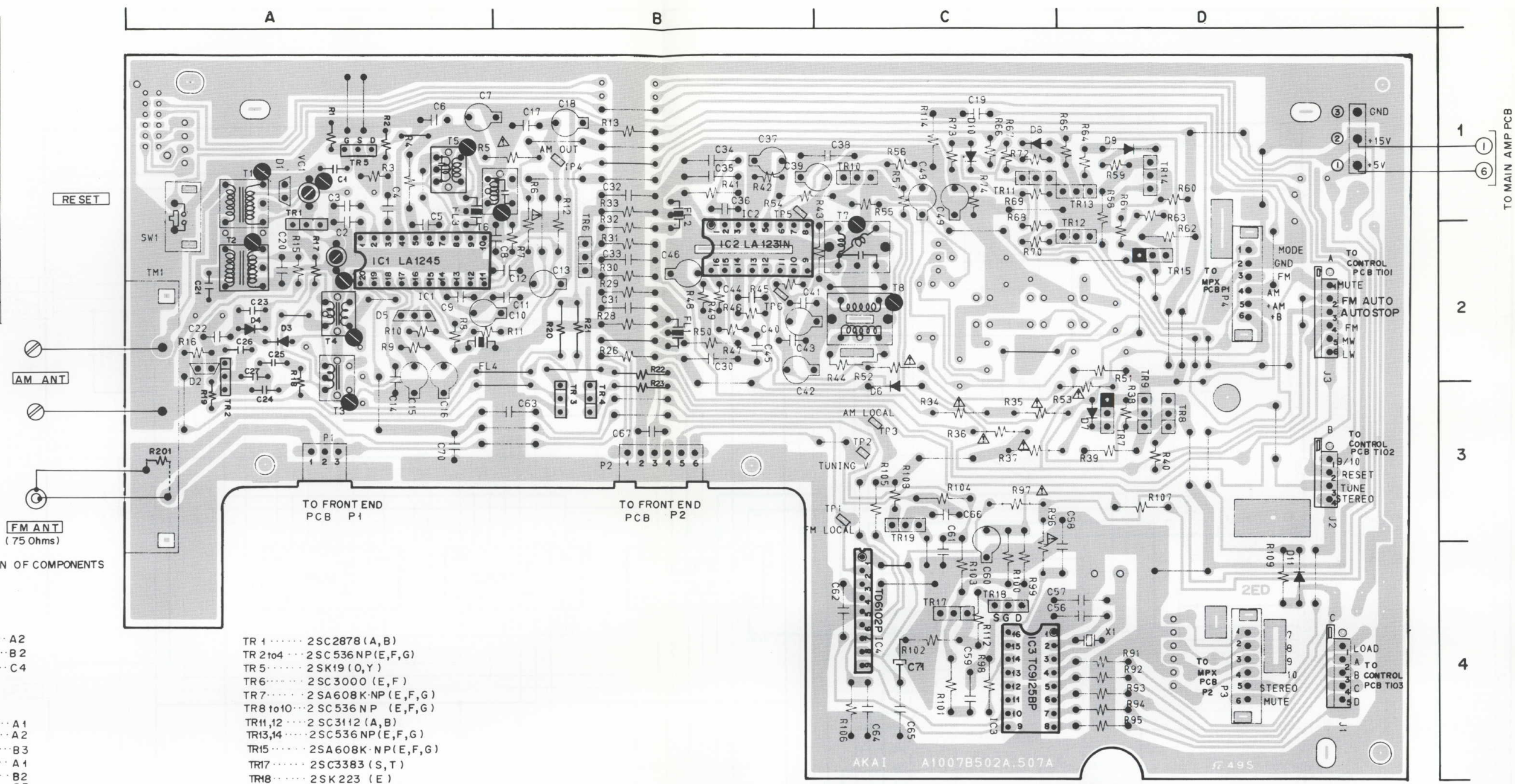
- ECB
- DSG
- SGD
- 2SA608K-NP
- 2SC536NP
- 2SC2878
- 2SC3000
- 2SC3112
- 2SC3383

VOLTAGES ARE INDICATED AT MW MODE (98MHz, 1kHz, 75kHz DEV., 65dB TUNED), INDICATED IN () AT FM MODE (99.9kHz, 1kHz, 30% 74dB TUNED) AND INDICATED IN [] AT LW MODE (200kHz, 1kHz, 30% 90dB TUNED)

AA-A35L
 SCHEMATIC
 NO. 7 - 4
 TUNER
 DIAGRAM
 840606B

001532

ADJUSTMENT ITEM	POINT
MW SENS (LOW)	T 1
MW SENS (HIGH)	VC 1
LW SENS (LOW)	T 2
LW SENS (HIGH)	VC 2
LW OSC	T 4
MW OSC	T 3
AM IF	T 5, T 6
FM CENTER VOLTAGE	T 7, T 8
FM LOCAL OUTPUT	TP 1
TUNING VOLTAGE (FM, LW, MW OSC)	TP 2
AM LOCAL OUTPUT	TP 3
AM OUTPUT	TP 4
FM CENTER VOLTAGE	TP 5, 6



LOCATION OF COMPONENTS

IC

- IC 1 A2
- IC 2 B2
- IC 3,4 C4

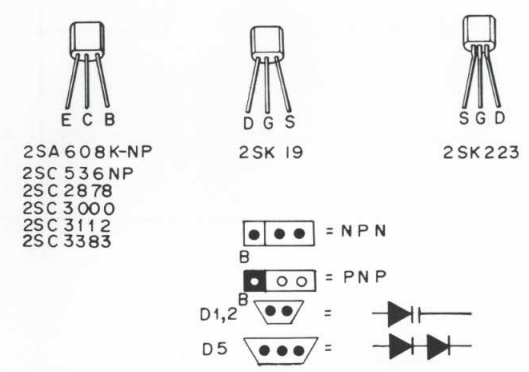
TR

- TR 1 A1
- TR 2 A2
- TR 3,4 B3
- TR 5 A1
- TR 6 B2
- TR 7 to 9 D3
- TR 10,11 C1
- TR 12 D2
- TR 13,14 D1
- TR 15 D2
- TR 17,18 C4
- TR 19 C3

- TR 1 2SC2878 (A, B)
- TR 2 to 4 2SC536NP (E, F, G)
- TR 5 2SK19 (O, Y)
- TR 6 2SC3000 (E, F)
- TR 7 2SA608K-NP (E, F, G)
- TR 8 to 10 2SC536NP (E, F, G)
- TR 11, 12 2SC3112 (A, B)
- TR 13, 14 2SC536NP (E, F, G)
- TR 15 2SA608K-NP (E, F, G)
- TR 17 2SC3383 (S, T)
- TR 18 2SK223 (E)
- TR 19 2SC3383 (S, T)

TERMINAL

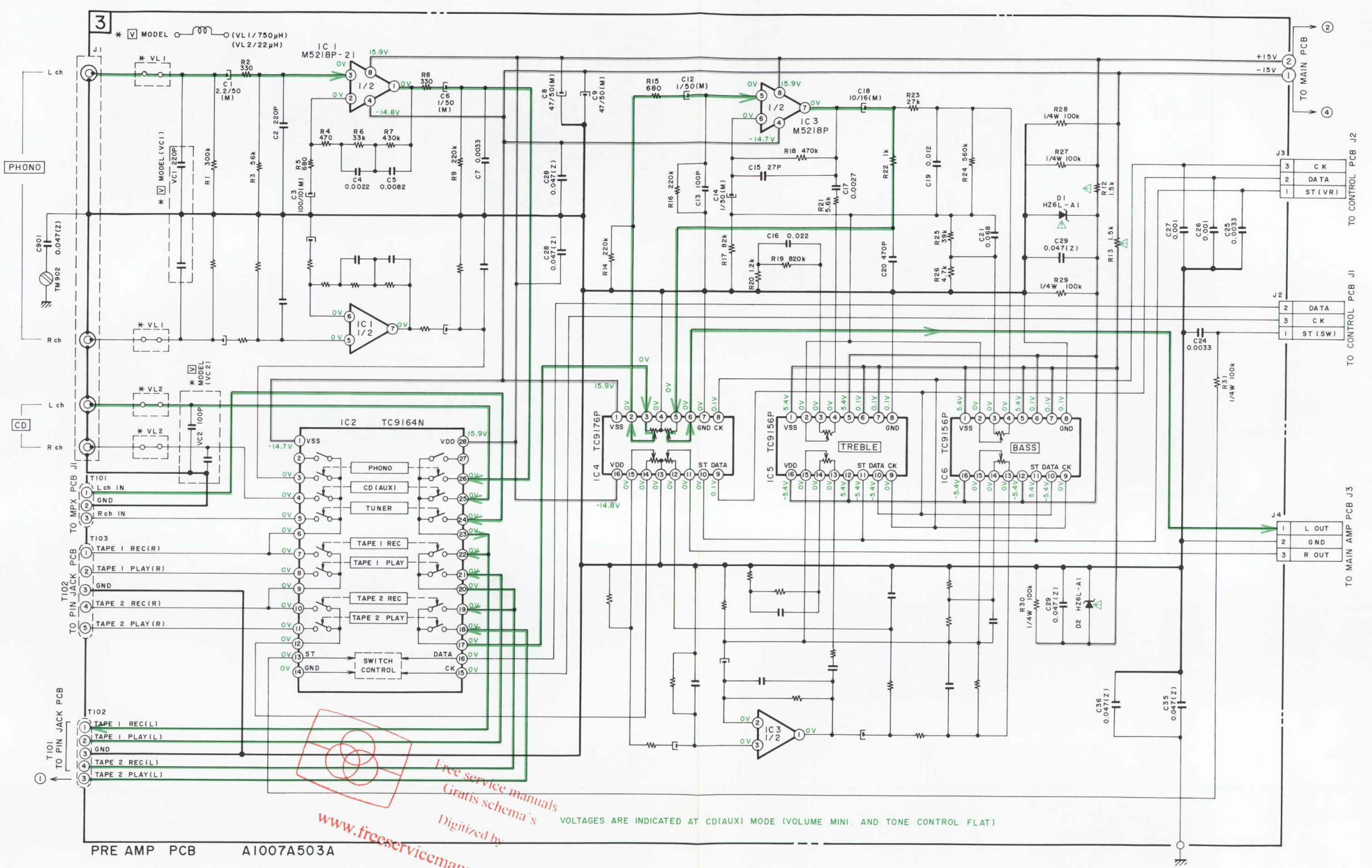
- P1 A3
- P2 B3
- P3 D4
- P4 D2
- J1 D4
- J2 D3
- J3 D2
- ① to ④ D1



TUNER PCB A1007B507A (2ED) [B][E]

WARNING: ⚠ INDICATES SAFETY CRITICAL COMPONENTS. FOR CONTINUED SAFETY, REPLACE SAFETY CRITICAL COMPONENTS ONLY WITH MANUFACTURER'S RECOMMENDED PARTS.
 AVERTISSEMENT: ⚠ ILL INDIQUE LES COMPOSANTS CRITIQUES DE SÉCURITÉ. POUR MAINTENIR LE DEGRÉ DE SÉCURITÉ DE L'APPAREIL, NE REMPLACER QUE DES PIÈCES RECOMMANDÉES PAR LE FABRICANT

AA-A35/L



— = +B (POWER SUPPLY) LINE
 — = SIGNAL LINE
 — = SIGNAL LINE IS INDICATED LEFT CHANNEL ONLY.

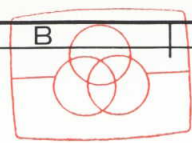
WARNING: Δ INDICATES SAFETY CRITICAL COMPONENTS FOR CONTINUED SAFETY. REPLACE SAFETY CRITICAL COMPONENTS ONLY WITH MANUFACTURER'S RECOMMENDED PARTS.
 AVERTISSEMENT: Δ IL INDIQUE LES COMPOSANTS CRITIQUES DE SÉCURITÉ. POUR MAINTENIR LE DEGRÉ DE SÉCURITÉ DE L'APPAREIL, NE REMPLACER QUE DES PIÈCES RECOMMANDÉES PAR LE FABRICANT.

NOTE
 UNLESS OTHERWISE SPECIFIED
 ALL RESISTORS IN OHMS 1/6W (J)
 ALL CAPACITORS IN μ F 50 WV (J)

AA-A35/L
 SCHEMATIC
 NO. 7-5
 PRE AMP
 DIAGRAM
 840607A (A2)
 4C

Free service manuals
 Gratis schema's
 Digitized by
 www.freeservicemanuals.info

VOLTAGES ARE INDICATED AT CD(AUX) MODE (VOLUME MINI. AND TONE CONTROL FLAT)

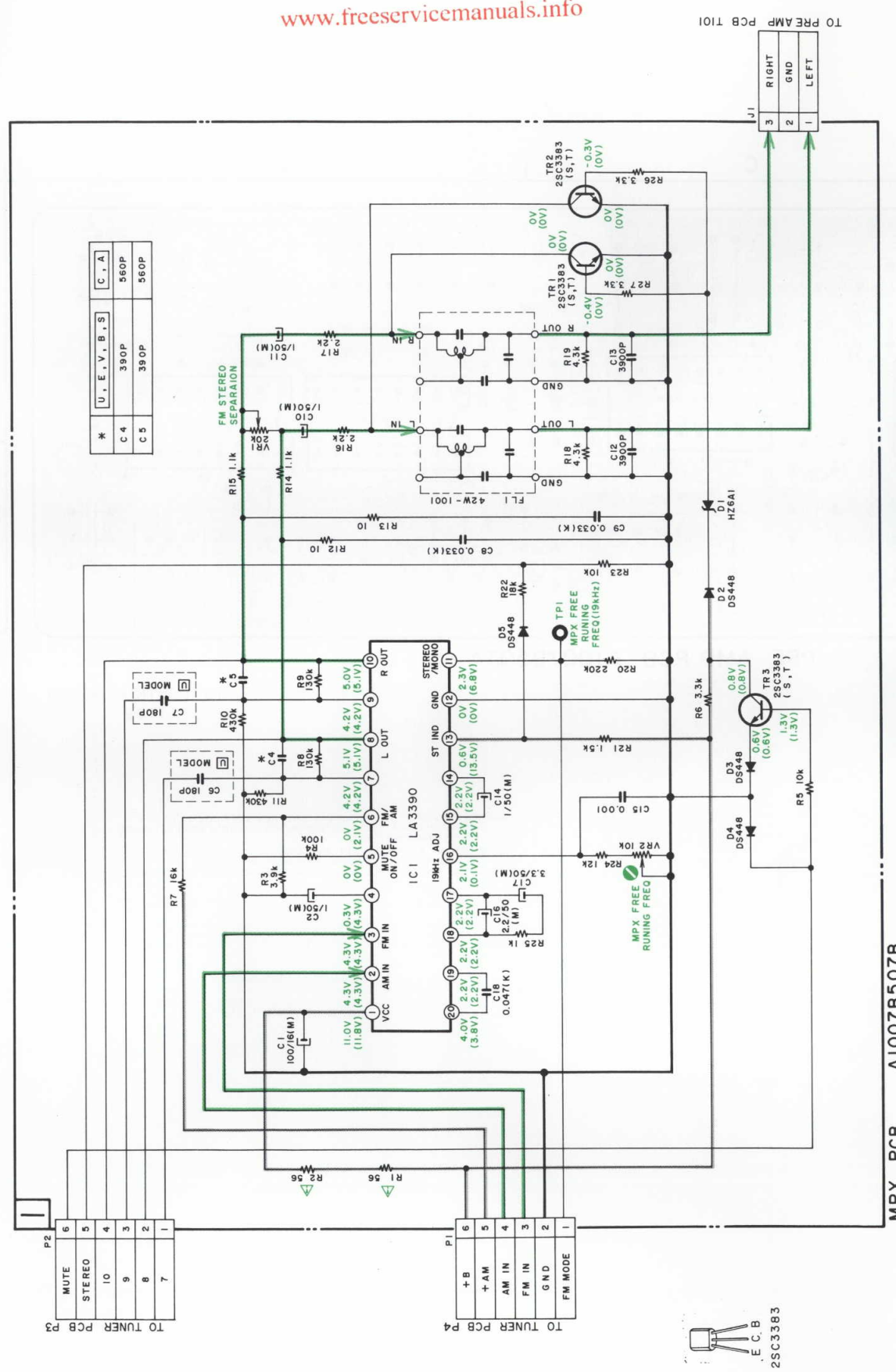


Free Service Manuals
Gratis schema's

Digitized by

www.freeservicemanuals.info

AA-A35/L MPX SCHEMATIC DIAGRAM 840608A^(A3) NO. 7-6



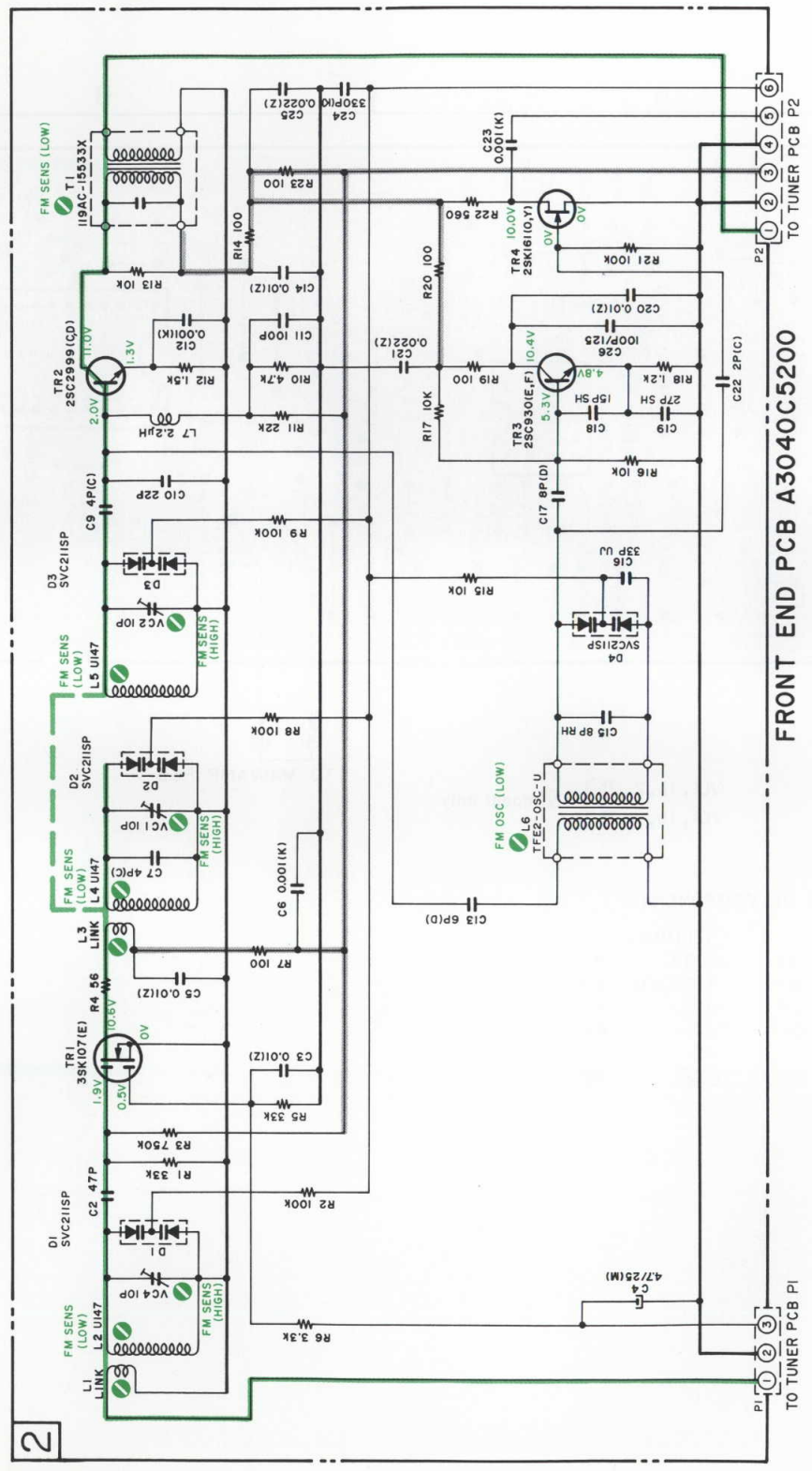
MPX PCB A1007B507B

VOLTAGES ARE INDICATED AT FM MODE (98MHz, 1kHz, 75kHz DEV, 60dB TUNED)
AND INDICATED IN () AT AM MODE (999kHz, 1kHz, 30%, 74dB TUNED)

NOTE
UNLESS OTHERWISE SPECIFIED
ALL RESISTORS IN OHMS 1/4W (J)
ALL CAPACITORS IN μ F 50 WV (J)

WARNING: Δ INDICATES SAFETY CRITICAL COMPONENTS FOR CONTINUED SAFETY.
REPLACE SAFETY CRITICAL COMPONENTS ONLY WITH MANUFACTURER'S
RECOMMENDED PARTS.
AVERTISSEMENT: Δ IL INDIQUE LES COMPOSANTS CRITIQUES DE SÉCURITÉ.
POUR MAINTENIR LE DEGRÉ DE SÉCURITÉ DE L'ÉQUIPEMENT,
NE REMPLACER QUE DES PIÈCES RECOMMANDÉES PAR LE FABRICANT.

— +B (POWER SUPPLY) LINE
— SIGNAL LINE



FRONT END PCB A3040C5200

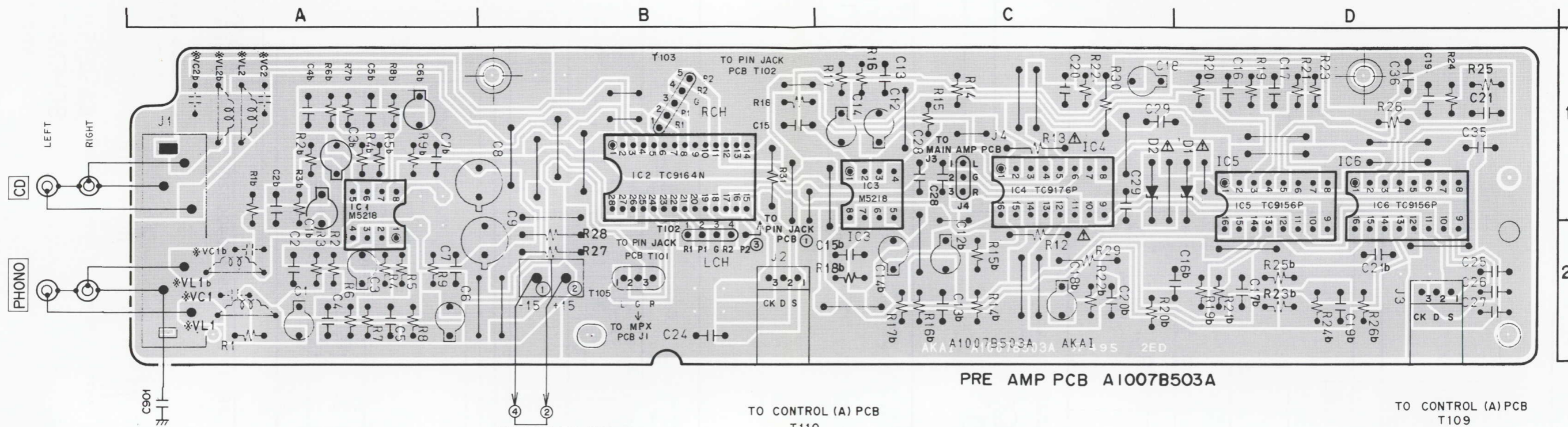
VOLTAGES ARE INDICATED AT FM MODE
(98MHz, 1kHz, 75kHz DEV, 60dB TUNED)

— +B (POWER SUPPLY) LINE
— FM SIGNAL LINE

NOTE
UNLESS OTHERWISE SPECIFIED
ALL RESISTORS IN OHMS 1/8W (J)
ALL CAPACITORS IN μ F 50WV (J)

- E.C.B. 25C930
- E.C.B. 25C2999
- D.S.G. 25K161
- G2.D 35K107

AA-A35/L FRONT END SCHEMATIC DIAGRAM NO.7-7 840224B^(A3) 4C



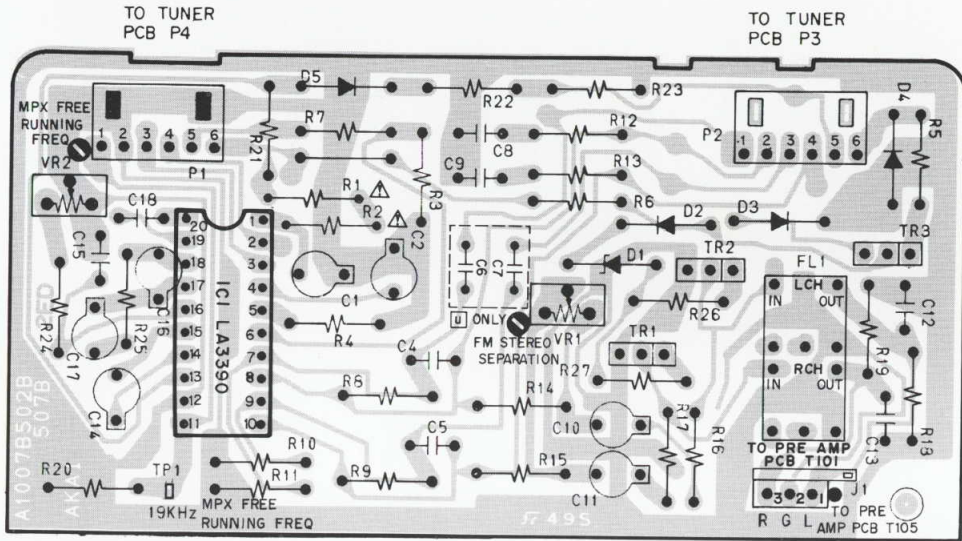
PRE AMP PCB A1007B503A

VL1, 1b, 2, 2b } model only
 VC1, 1b, 2, 2b }

LOCATION OF COMPONENTS

IC	TERMINAL	TERMINAL
IC1	A1	T103 B1
IC2	B1	T104,105 B2
IC3,4	C1	J2 B2
IC5,6	D1	J3 D2
		J4 C2
		①② B2

WARNING: \triangle INDICATES SAFETY CRITICAL COMPONENTS. FOR CONTINUED SAFETY, REPLACE SAFETY CRITICAL COMPONENTS ONLY WITH MANUFACTURER'S RECOMMENDED PARTS.
 AVERTISSEMENT: \triangle IL INDIQUE LES COMPOSANTS CRITIQUES DE SÉCURITÉ. POUR MAINTENIR LE DEGRÉ DE SÉCURITÉ DE L'APPAREIL, NE REMPLACER QUE DES PIÈCES RECOMMANDÉES PAR LE FABRICANT



MPX PCB
 A1007B502B UCAEVS
 A1007B507B BE (AA-A35L)

TR1,2,3 --- 2SC3383(S,T)

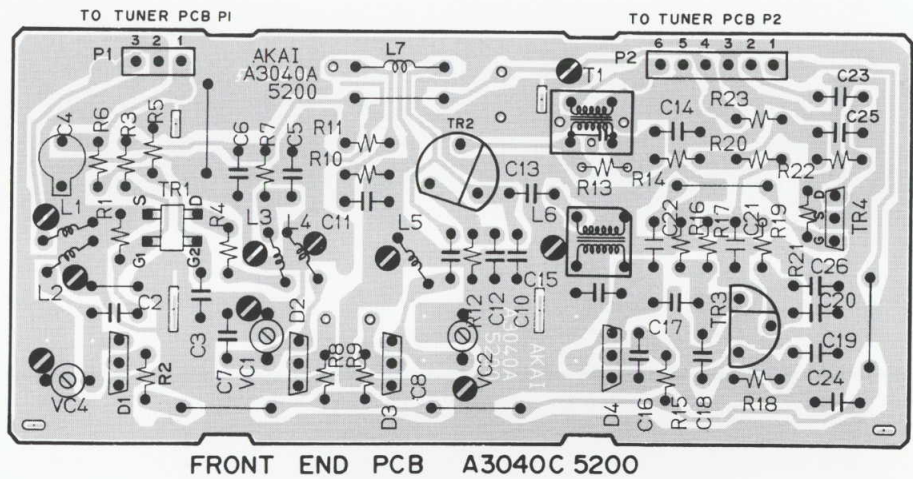
= NPN
 B



WARNING: Δ INDICATES SAFETY CRITICAL COMPONENTS. FOR CONTINUED SAFETY, REPLACE SAFETY CRITICAL COMPONENTS ONLY WITH MANUFACTURER'S RECOMMENDED PARTS.

AVERTISSEMENT: Δ IL INDIQUE LES COMPOSANTS CRITIQUES DE SÉCURITÉ. POUR MAINTENIR LE DEGRÉ DE SÉCURITÉ DE L'APPAREIL, NE REMPLACER QUE DES PIÈCES RECOMMANDÉES PAR LE FABRICANT.

ADJUSTMENT POINT	
LI to 5	FM SENS (LOW)
VC1,2,4	FM SENS (HIGH)
L6	FM OSC (LOW)
T1	o FM SENS (LOW)
	o FM STEREO DISTORTION



TR1 ----- 3SK107 (E)
 TR2 ----- 2SC2999 (C,D)
 TR3 ----- 2SC930 (E,F)
 TR4 ----- 2SK161 (O,Y)

