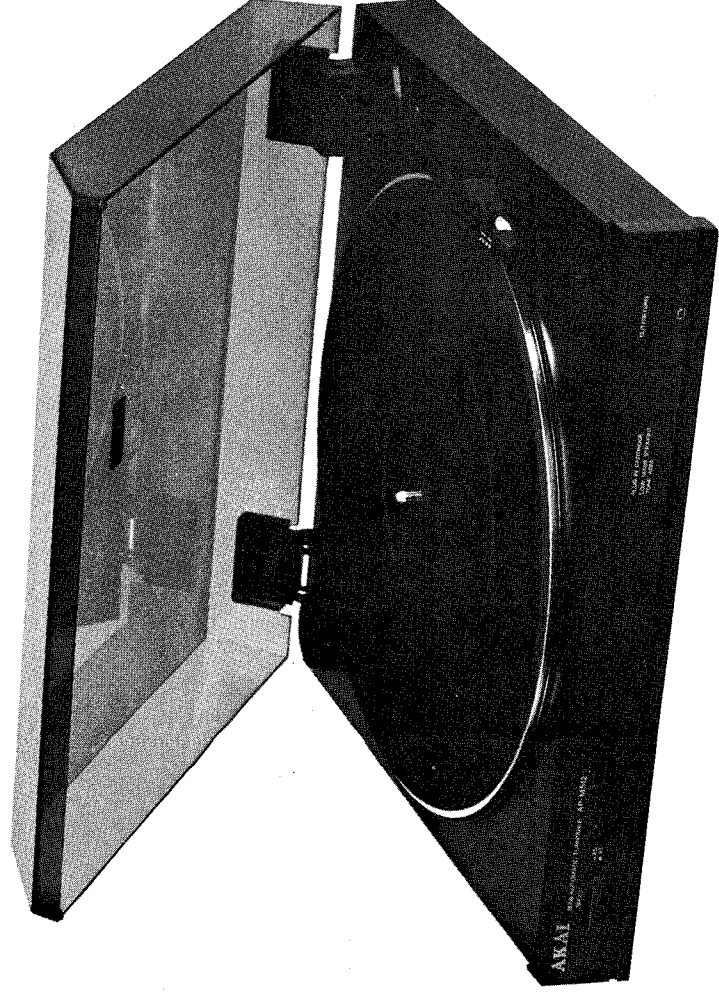


AKAI SERVICE MANUAL



SEMI AUTOMATIC TURNTABLE

MODEL AP-M 512

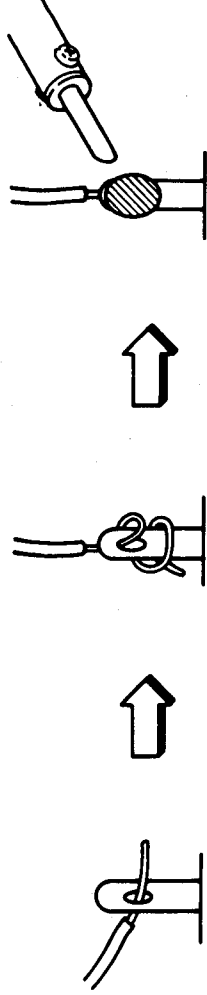
SAFETY INSTRUCTIONS

SAFETY CHECK AFTER SERVICING

Confirm the specified insulation resistance between power cord plug prongs and externally exposed parts of the set is greater than 10 Mohms, but for equipment with external antenna terminals (tuner, receiver, etc.) and is intended for [C] or [A], specified insulation resistance should be more than 2.2 Mohms (ground terminals, microphone jacks, headphone line-in-out jacks etc.)


PRECAUTIONS DURING SERVICING

1. Parts identified by the Δ symbol parts are critical for safety. Replace only with parts number specified.
2. In addition to safety, other parts and assemblies are specified for conformance with such regulations as those applying to spurious radiation. These must also be replaced only with specified replacements.
Examples: RF converters, tuner units, antenna selector switches, RF cables, noise blocking capacitors, noise blocking filters, etc.
3. Use specified internal wiring. Note especially:
 - 1) Wires covered with PVC tubing
 - 2) Double insulated wires
 - 3) High voltage leads
4. Use specified insulating materials for hazardous live parts. Note especially:
 - 1) Insulation Tape
 - 2) PVC tubing
 - 3) Spacers (Insulating Barriers)
 - 4) Insulation sheets for transistors
 - 5) Plastic screws for fixing microswitch (especially in turntable)
5. When replacing AC primary side components (transformers, power cords, noise blocking capacitors, etc.), wrap ends of wires securely about the terminals before soldering.



6. Observe that wires do not contact heat producing parts (heatsinks, oxide metal film resistors, fusible resistors, etc.).
7. Check that replaced wires do not contact sharp edged or pointed parts.
8. Also check areas surrounding repaired locations.
9. Use care that foreign objects (screws, solder droplets, etc.) do not remain inside the set.

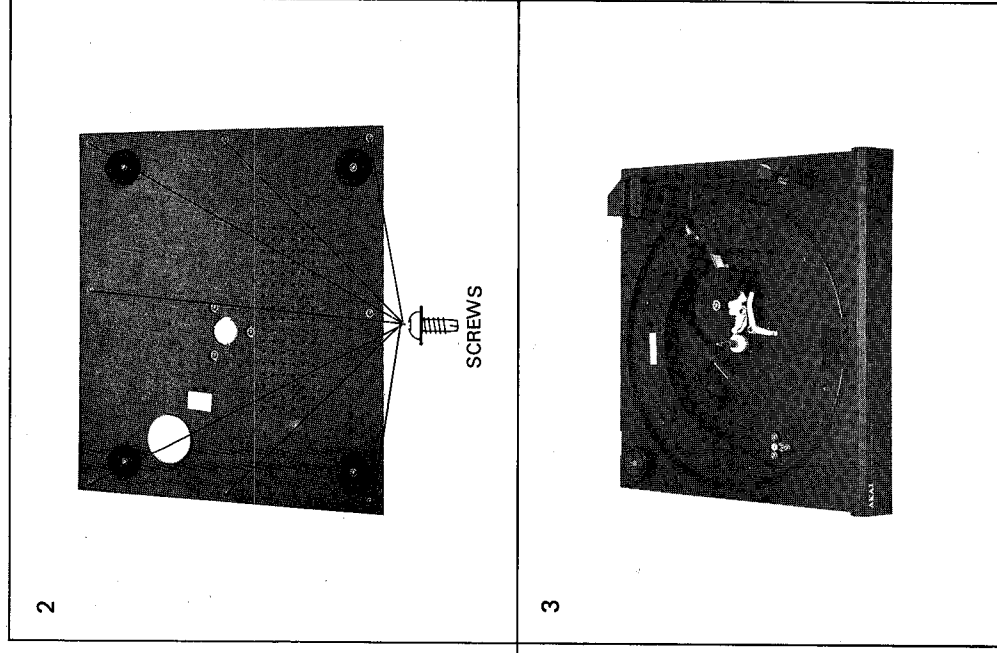
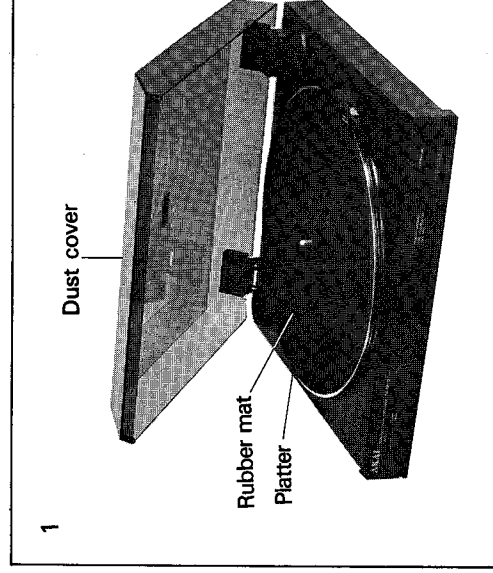
I. SPECIFICATIONS

MOTOR	DC E.G. MOTOR
SPEED	33, 1/3 & 45 rpm
WOW & FLUTTER	0.09% (JIS WRMS)
RUMBLE	60dB (DIN-B)
CARTRIDGE (PC-35) OUTPUT VOLTAGE CHANNEL SEPARATION CHANNEL BALANCE	MM Plug-in ( Plug-in type) STYLUS RS-33 4mV 20dB Less than 2dB
EFFECTIVE ARM LENGTH	208mm
POWER REQUIREMENTS	DC 13V
DIMENSIONS	324(D) x 350(W) x 92(H) mm (12.7 x 13.8 x 3.61 inches)
WEIGHT	2.6Kg (5.7 lbs)

* For improvement purposes, specifications and design are subject to change without notice.

II. DISMANTLING OF UNIT

In case of trouble, etc. necessitating dismantling, please dismantle in the order shown in the Reassemble in reverse order photographs.



III. CONTROLS

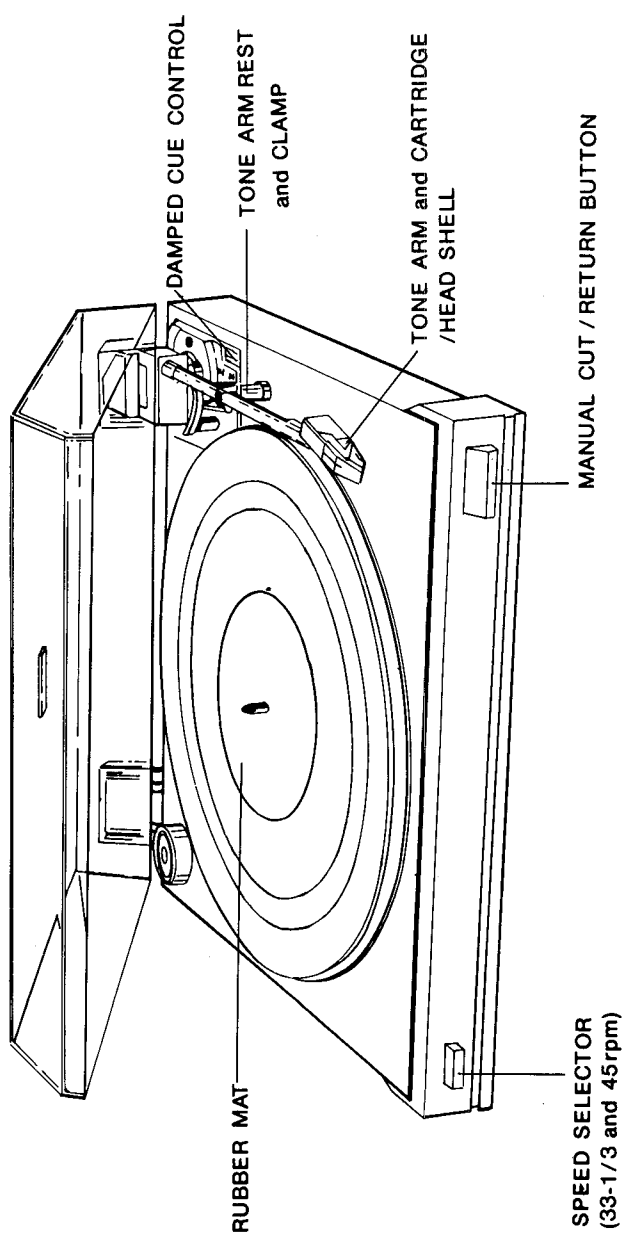


Fig. 3-1

IV. PRINCIPAL PARTS LOCATION

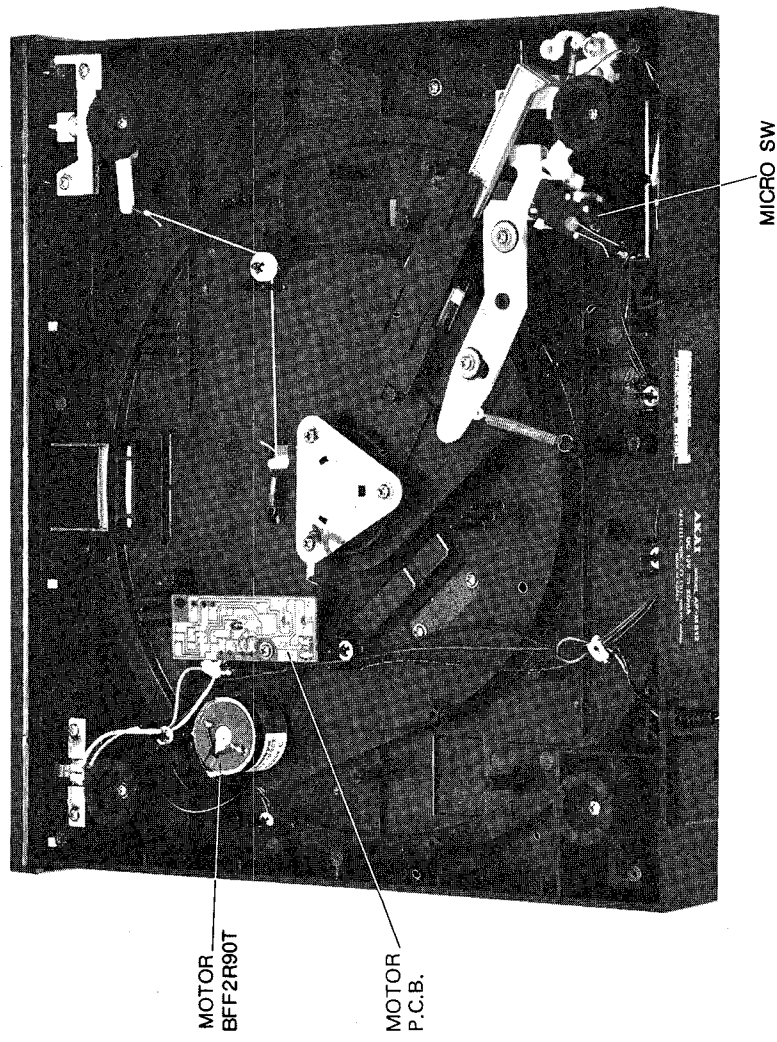


Fig. 4-1

V. ADJUSTMENTS

5-1. AUTO RETURN ADJUSTMENT

(Refer to Fig. 5-1)

- (1) If the Tone Arm returns to early or does not return at all, Open the Bottom cover and adjust the auto return point as follows.
(The location of auto return is within 54-64mm from the center spindle.)
- (2) Adjust the Cam in the hole located at the right side of Tone Arm after locking Tone Arm to the ARM REST.
 - a) Counter clock wise: Auto return point to the out side of record.
 - b) Clock wise: Auto return point to the center of record.

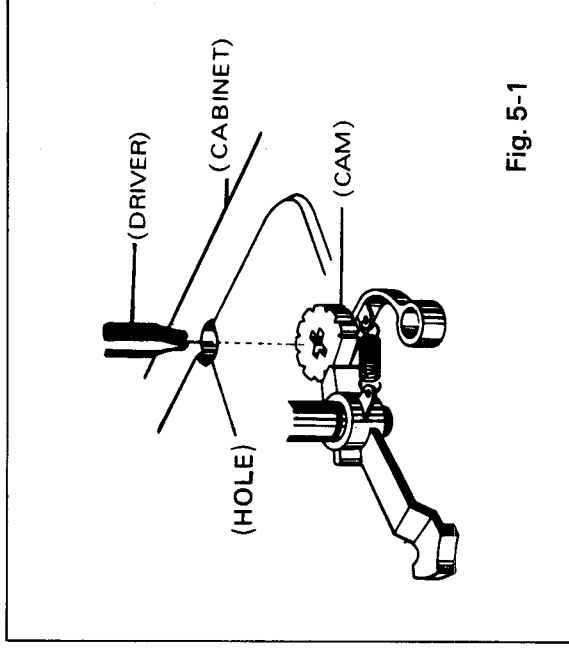


Fig. 5-1

5-2. STYLUS PRESSURE ADJUSTMENT

(Refer to Fig. 5-2)

Turn the screw which is located in the slot as follows.

- a) Counter clock wise: Increase stylus pressure.
- b) Clock wise: Decrease stylus pressure.

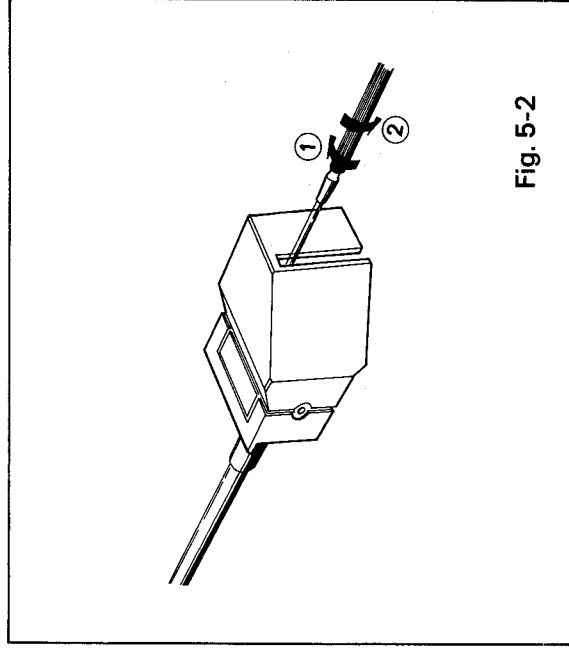


Fig. 5-2

5-3 SPEED ADJUSTMENT (Refer to Fig. 5-3)

- (1) Set the speed selector to 33-1/3 rpm.
- (2) Play back the test record (1000Hz 33-1/3 rpm), and adjust VR1 so that the speed is 1000Hz.
- (3) Set the speed selector to 45 rpm.
- (4) Play back the test record (1000Hz 45 rpm), and adjust VR2 so that the speed is 1000Hz.

NOTE: This speed adjustment should be adjust 33-1/3 rpm position first then dajust 45 rpm next.

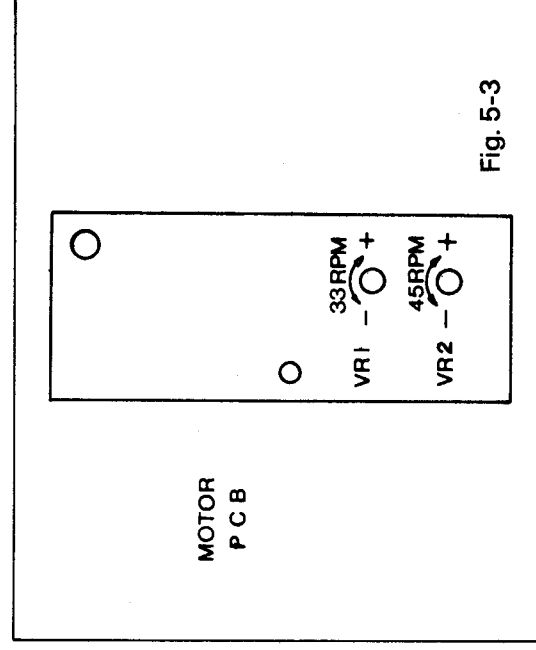
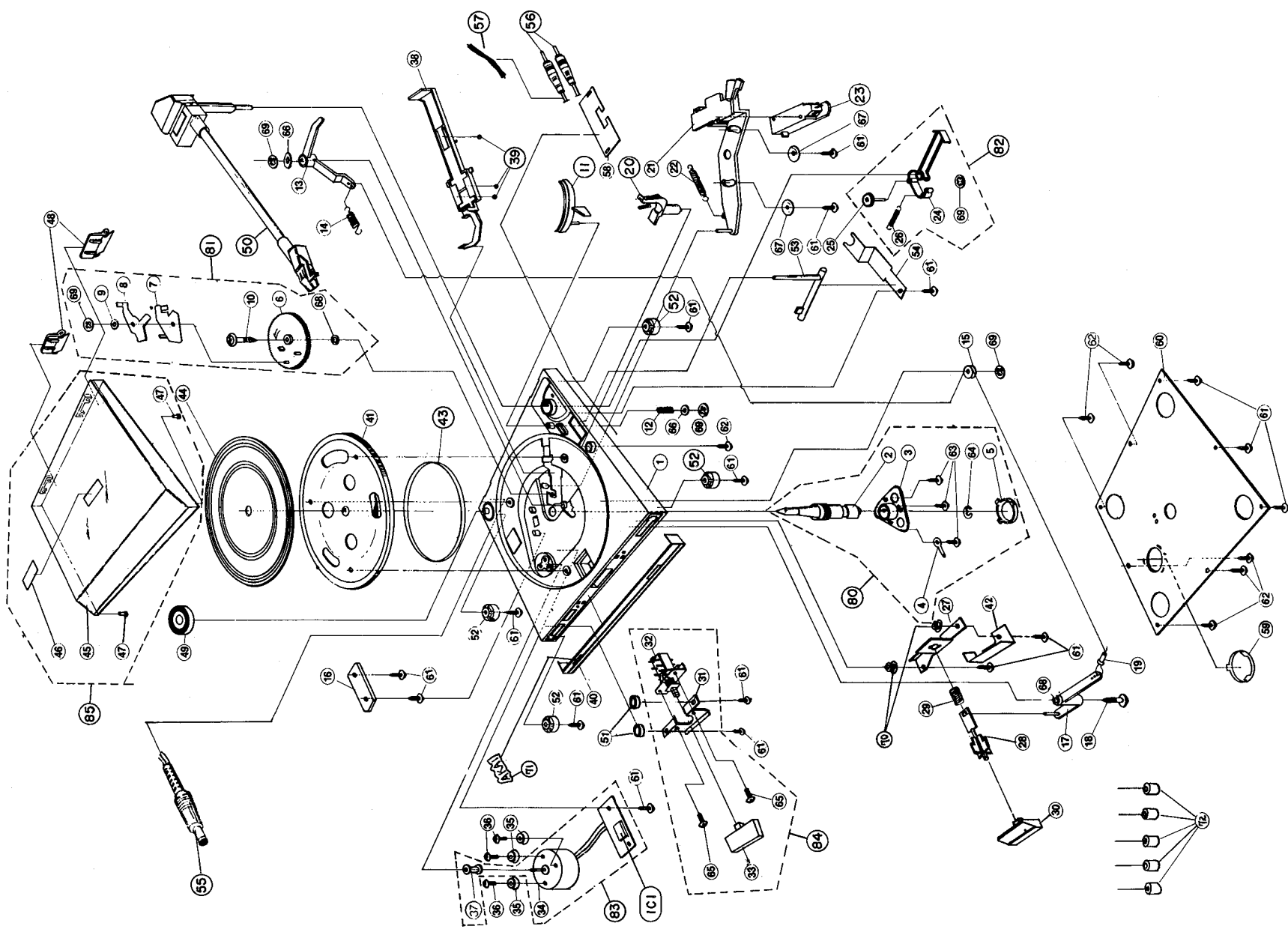


Fig. 5-3

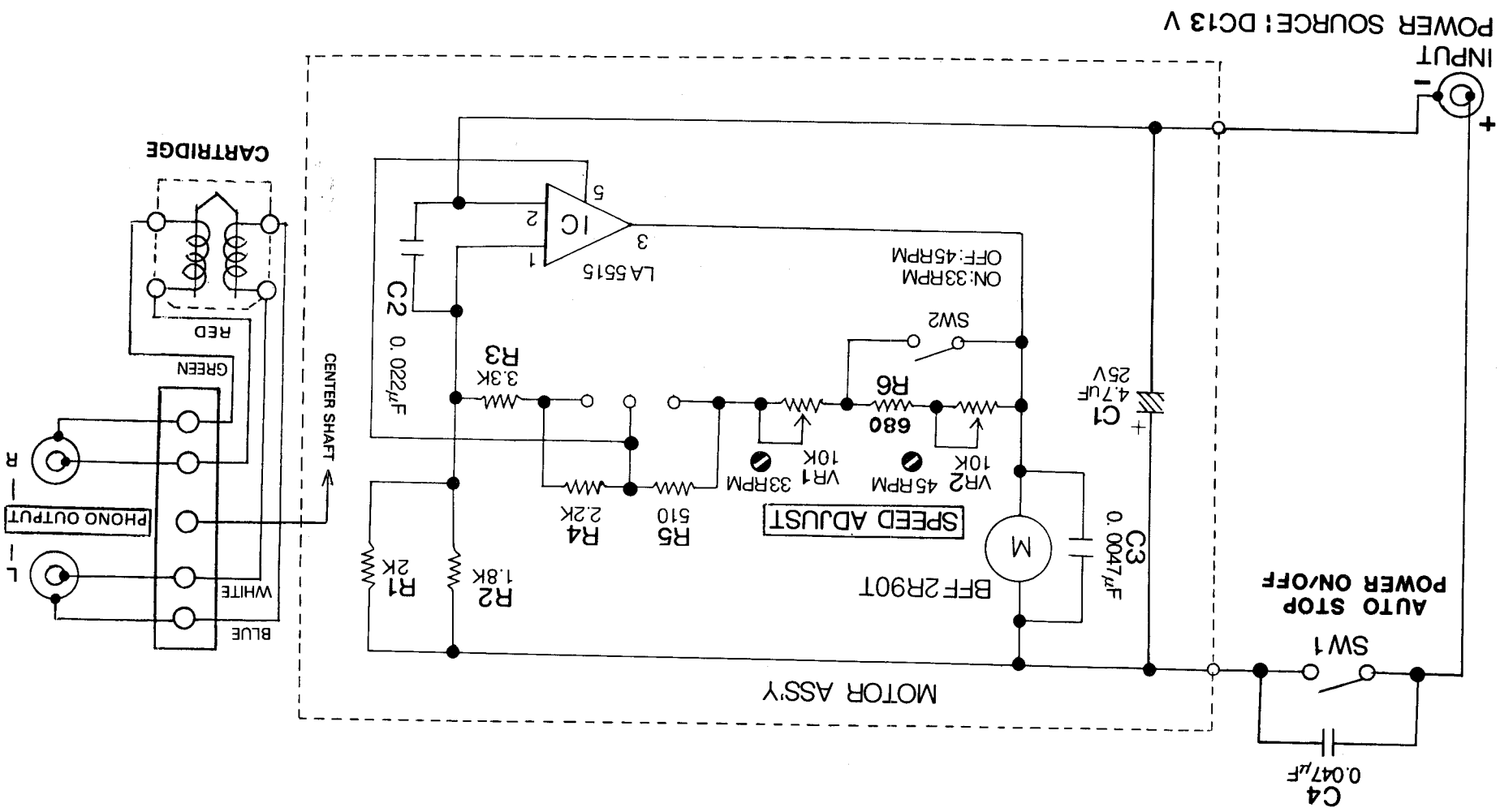
VI. PARTS LIST

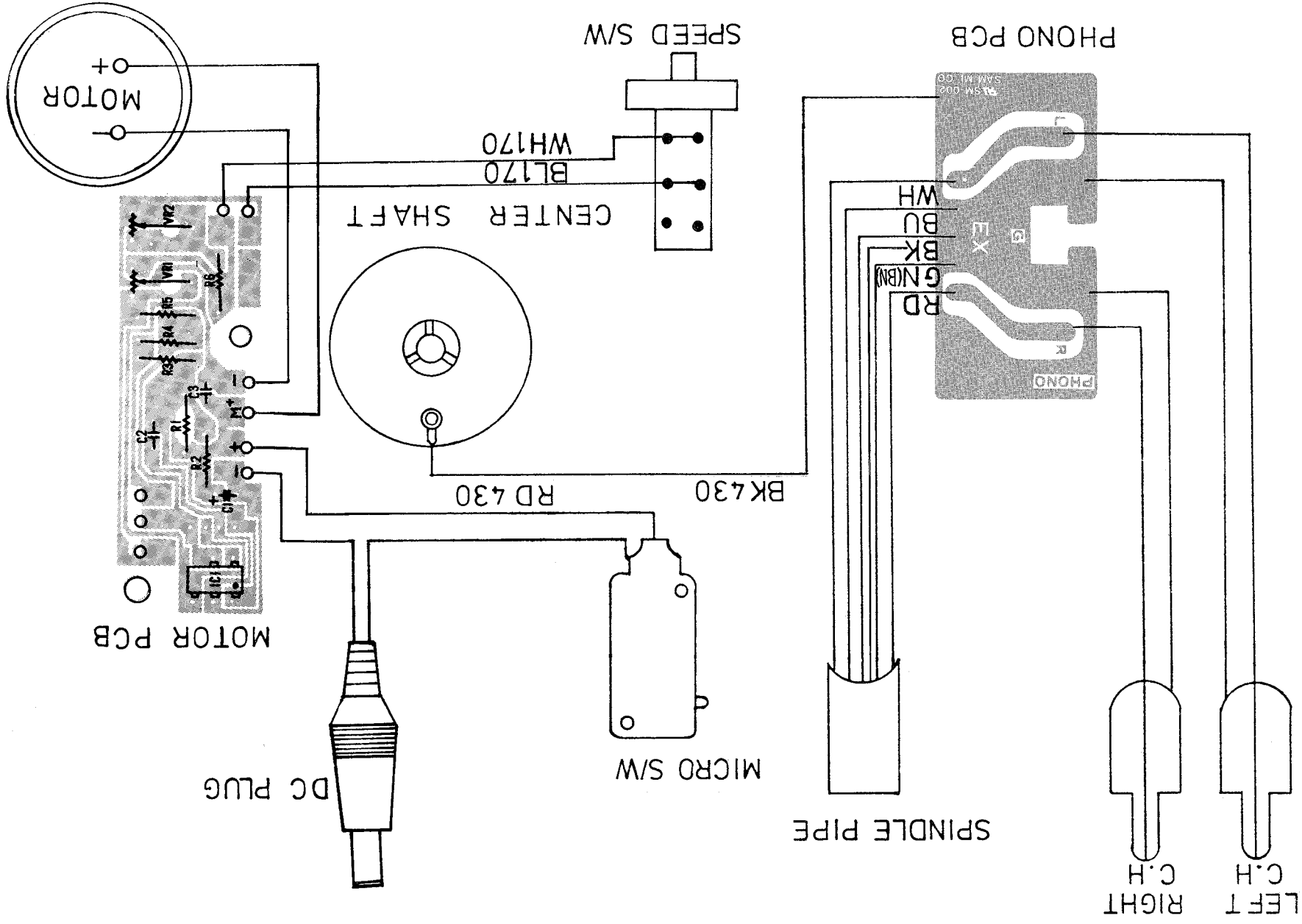
FINAL ASSEMBLY BLOCK



REF. NO.	PART-NO.	DESCRIPTION	NOTES
1-11	TP-720061	PLATE ELEVATION	
1-20	TP-720065	ARM REST ASSY AP-M512-CB	
1-23	ES-718344	A* SW MICRO AH-4700	
1-39	MV-269965	BALL 400STL	
1-43	MB-718346	BELT CR-WRT AP-M300	
1-48	TP-718347	HINGE BLK HT-506B AP-M300	
1-50	TP-718342	TOPE ARM ASSY AP-M300	
1-52	TP-720062	FOOT	
1-55	EW-718349	CORD POWER DC AP-M300	
1-56	EW-718348	CORD PHONO AP-M300	
1-80	TP-720063	SPINDLE ASSY AP-M512-CB	
1-81	TP-720064	MAIN GEAR BLK AP-M512-CB	
1-82	TP-720067	FEED ARM ASSY AP-M512-CB	
1-83	BM-718340	MOTOR BLK AP-M300	DO.1W
1-84	ES-718343	SW BRACKET ASSY AP-M300	
1-85	BC-720068	DUST COVER ASSY AP-M512-CB	
1-IC1	EI-720069	IC LA5515	

VII. SCHEMATIC DIAGRAM





MEMO
