



**AKAI**

**АКУСТИЧЕСКАЯ СИСТЕМА**

Model:

AS-R8025SSP

**SERVICE MANUAL**

## General safety instructions

To avoid the risk of an electronic shock, you should not expose the device to rain or moisture. Consequently, do not use the device in the immediate vicinity of water, for example near a bath tub, a swimming pool or in a damp cellar.

Use the device only for the intended purpose. only connect the device at a properly installed plug socket. Pay attention that the specified voltage corresponds to the voltage of plug socket.

when using external mains supply, pay attention to the correct polarity and voltage. Always place the batteries in the correct direction.

Assemble the device in such a way that the available ventilation openings are not covered.

Never open the housing of the device. Incorrect repairs can constitute a considerable risk of the user. Should the device become damaged, in particular the mains supply cable, do not operate the device any longer, but rather have it repaired by an expert. Check the mains supply cable regularly for damage. For safety reasons a broken or damaged mains lead may only be replaced by an equivalent lead from the manufacturer, our customer service department or a similarly qualified person.

These symbols may be found on the unit and are intended to indicate the following:



the lightning symbol should advise the user of parts in the inside of the device which carry dangerously high voltage level.



the symbol with an exclamation mark should advise the user of important operation or maintenance instructions in the accompanying documentation.

## Contents

Cover-----	P1
General safety instruction-----	P2
Exploded view of the Subwoofer-----	P3
Exploded view of the satellite-----	P4
Schematic diagram-----	P5
Drawing of PCB board-----	P6--P9
Part list-----	P10
Familiar malfunction analysis-----	P11

## Specification Data:

RMS output:110W(35W+15W\*5)

Speaker Unit:

subwoofer: 5.25"

satellite: 3"\*5

Distortion: 0.3% 1W 1KHz

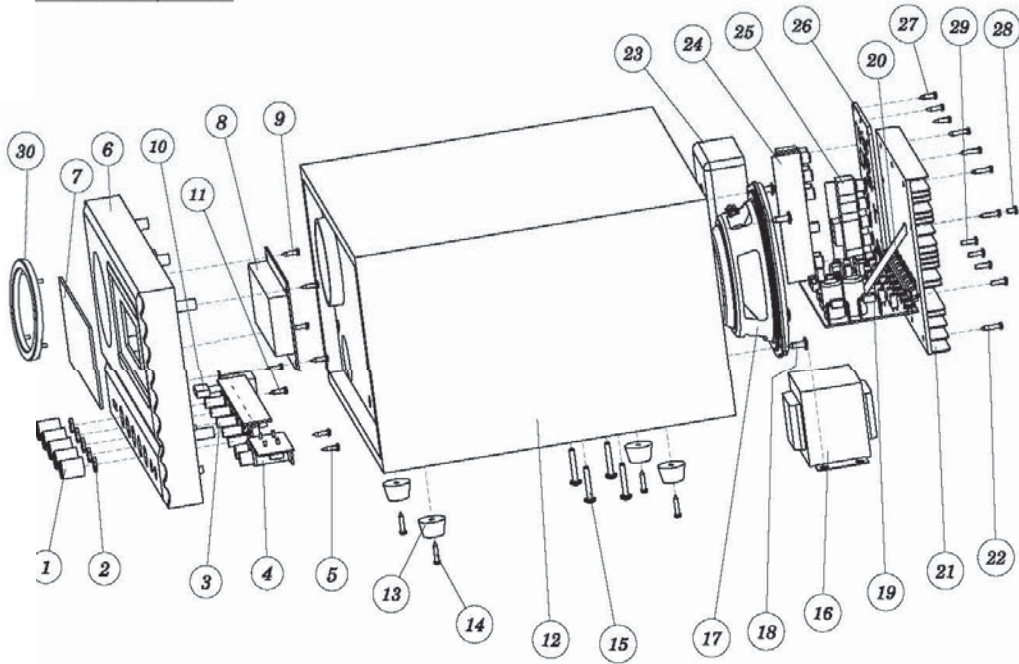
Frequency Response: 30Hz-20KHz

S/N Ratio: >=60dB

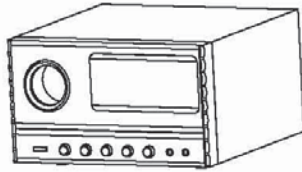
Seperation: >=45dB

# EXPLODED VIEWS OF THE SUBWOOFER

100	Exact	Normal	Other	Angular
	Optional	Tolerance	Package	
	±0.1	±0.2	±1.0	
1	±0.15	±0.3	±1.5	
2	±0.2	±0.4	±2.0	
3	±0.3	±0.6	±2.5	
4	±0.45	±0.7	±3.0	



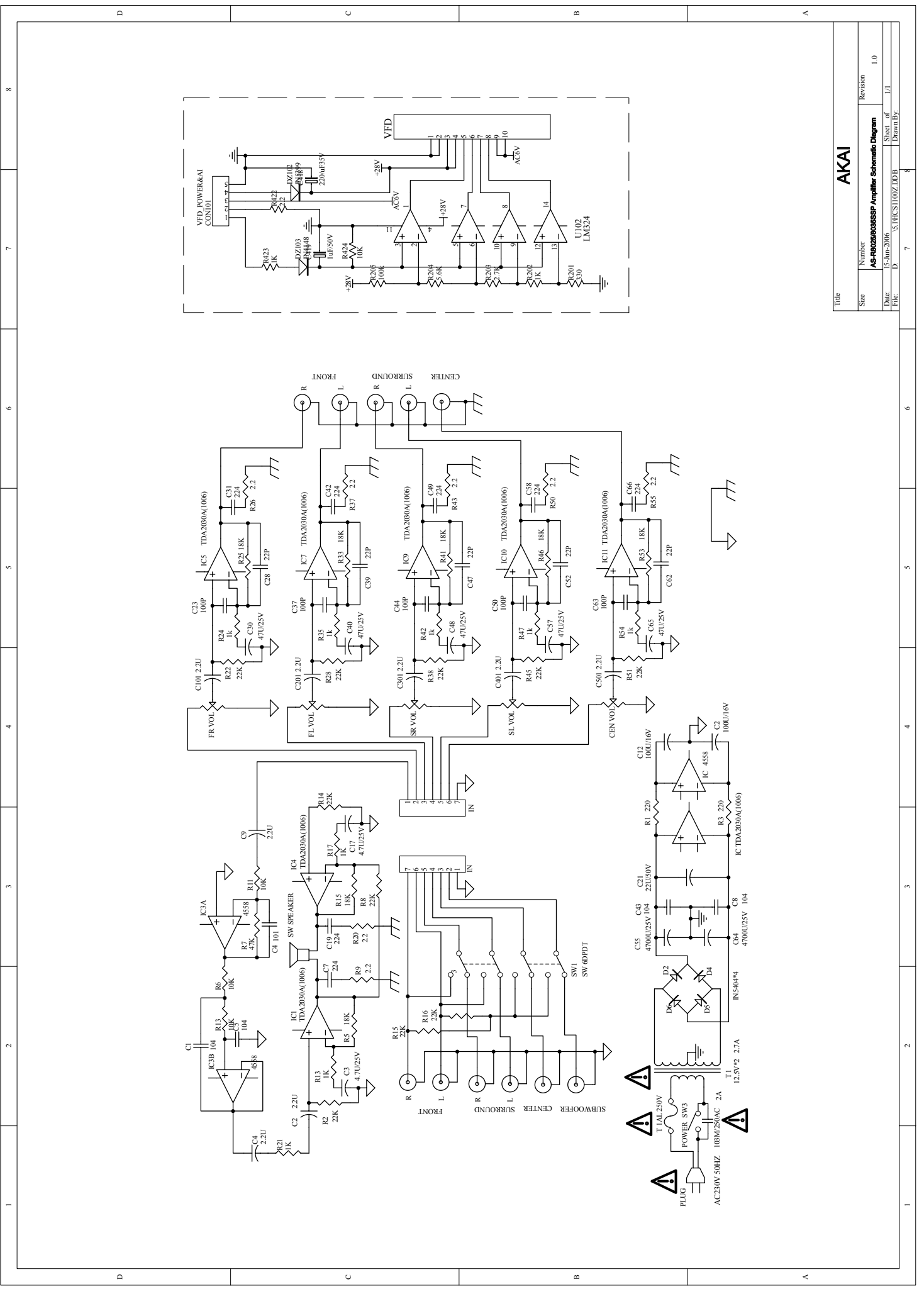
NO:	Component	QTY
1	Knob	5
2	Screw for fixing potentiometer	5
3	Potentiometer	1
4	MIC component	1
5	Screw for fixing MIC component	2
6	Front panel	1
7	Lens	1
8	Display	1
9	Screw for fixing display	4
10	Power switch	1
11	Screw for fixing power switch	2
12	Wooden box	1
13	Rubber feet	4
14	Screw for fixing rubber feet	4
15	Screw for fixing transformer	4
16	Transformer	1
17	Speaker	1
18	Screw for fixing speaker	4
19	Amplifier board	1
20	Fixing bar	1
21	Radiator	1
22	Screw for fixing radiator	8
23	Airproof box	1
24	Input board	1
25	Output board	1
26	Terminal board	1
27	Screw for fixing terminal board	10
28	Screw for fixing bar	3
29	Screw for fixing amplifier board	5
30	Duct	1



比例 0.006

			Material NO. 960-P6010-004		
			Picture NO. RDW-07020320		
Design :	YaoYuanHe	2007.02.03	Item	AS8025SSP SUB Explode map	
Auditing :			Unit: mm	Material:	Column





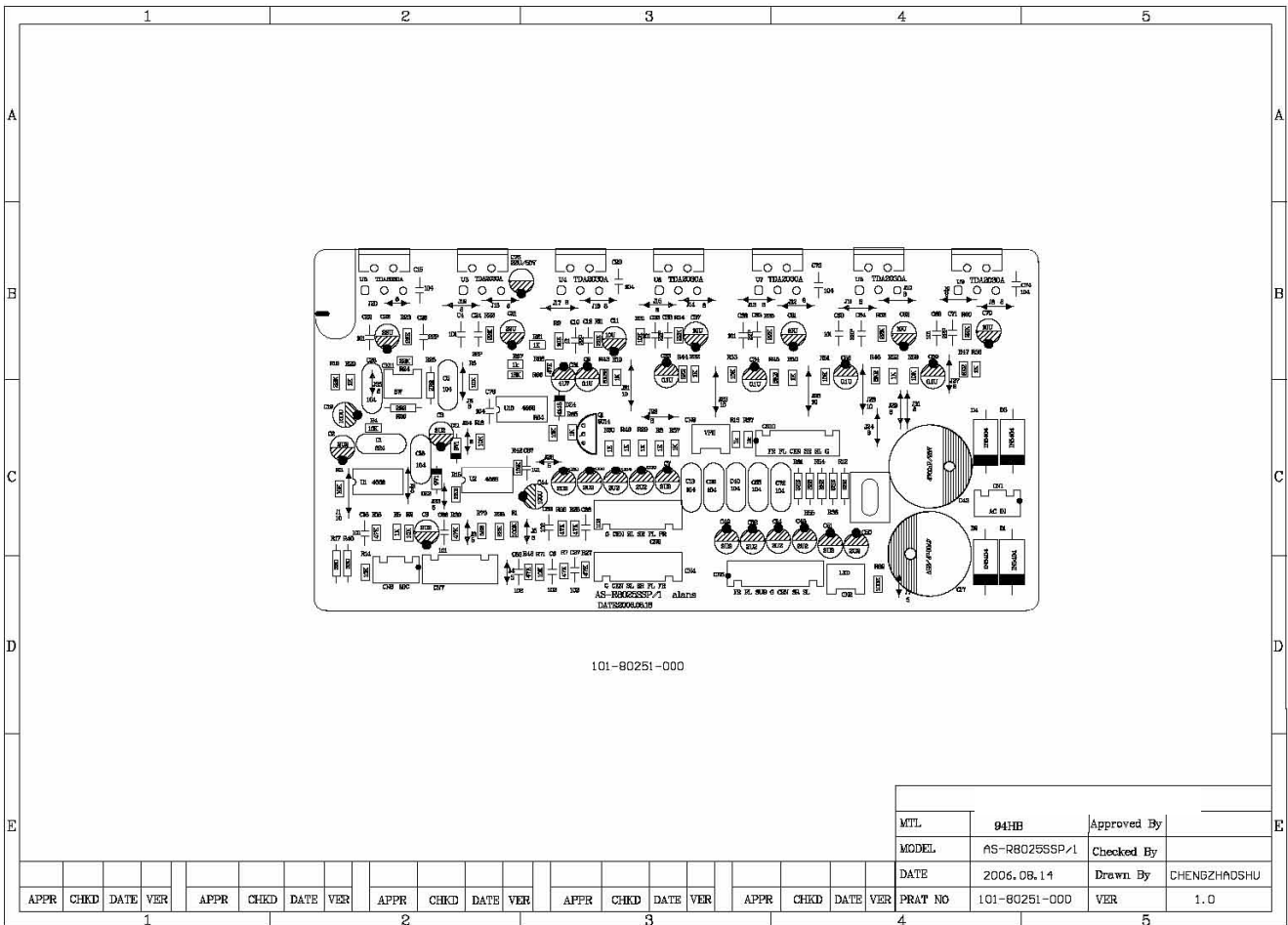
AKAI

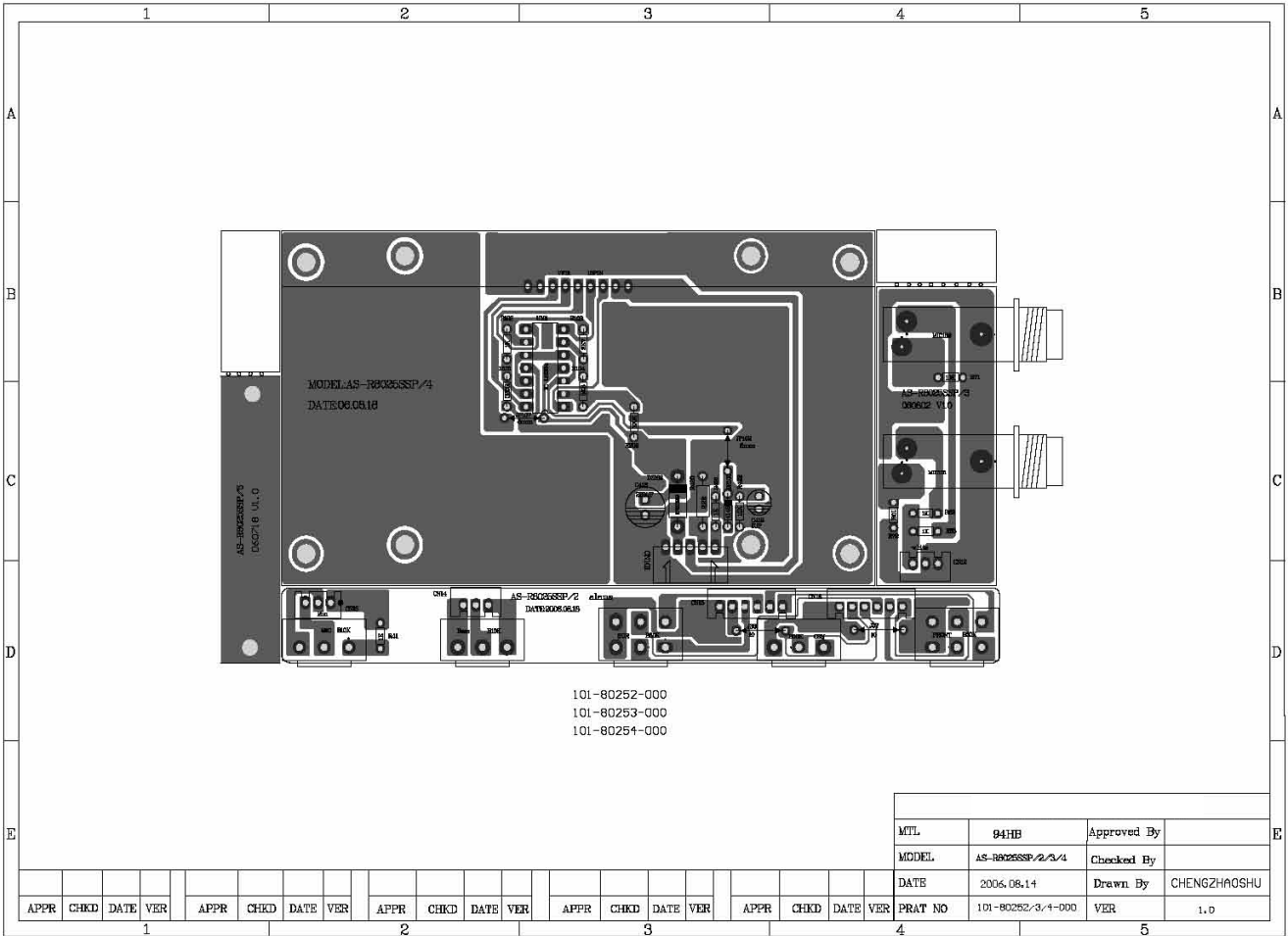
Title	AKAI
Number	AB-R0206036SSP Amplifier Schematic Diagram
Revision	1.0
Date	15-Jun-2006
File	3.LUCS1100Z.DDB
Drawn By	

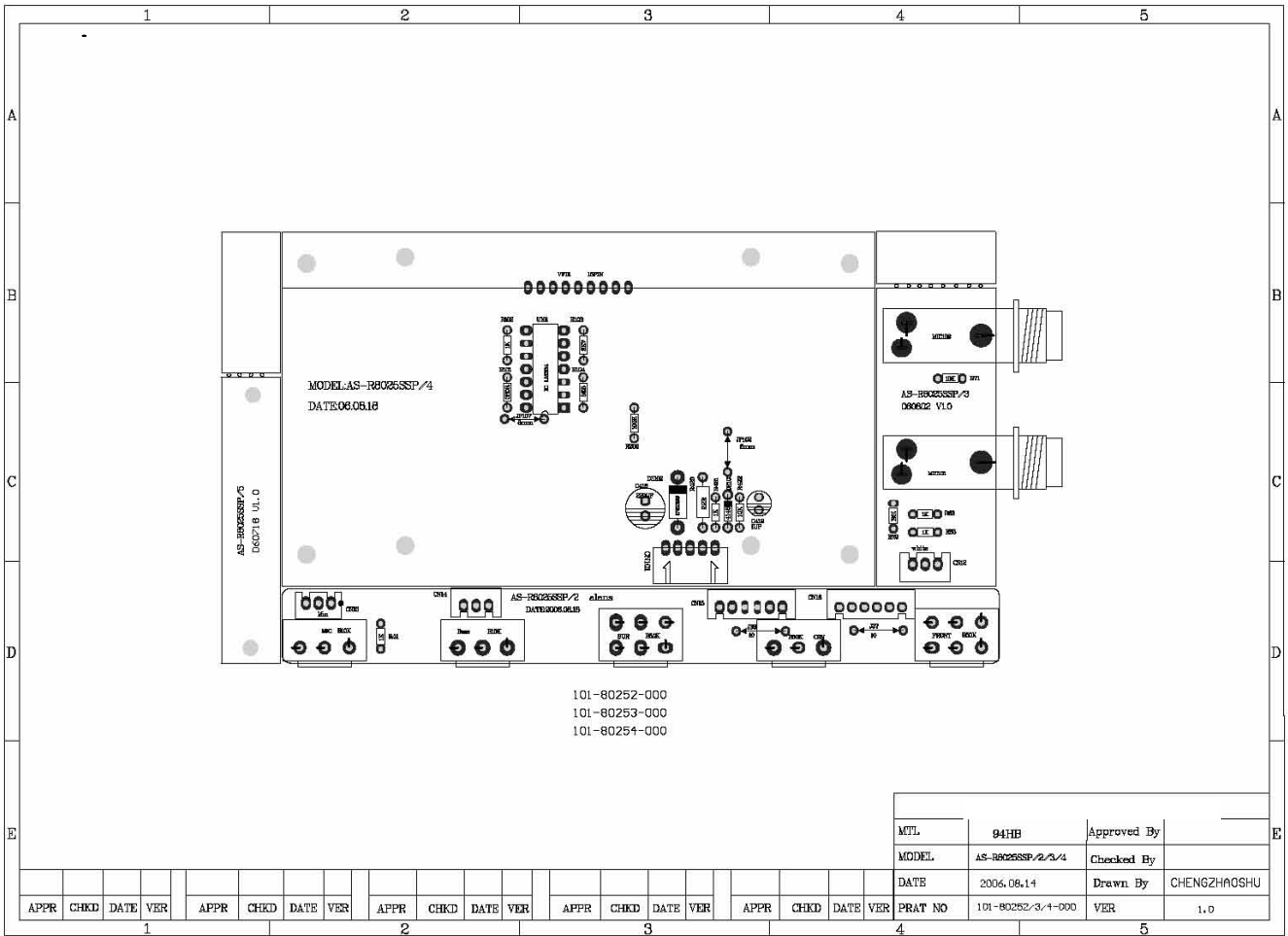
1 2 3 4 5 6 7 8

D C B A

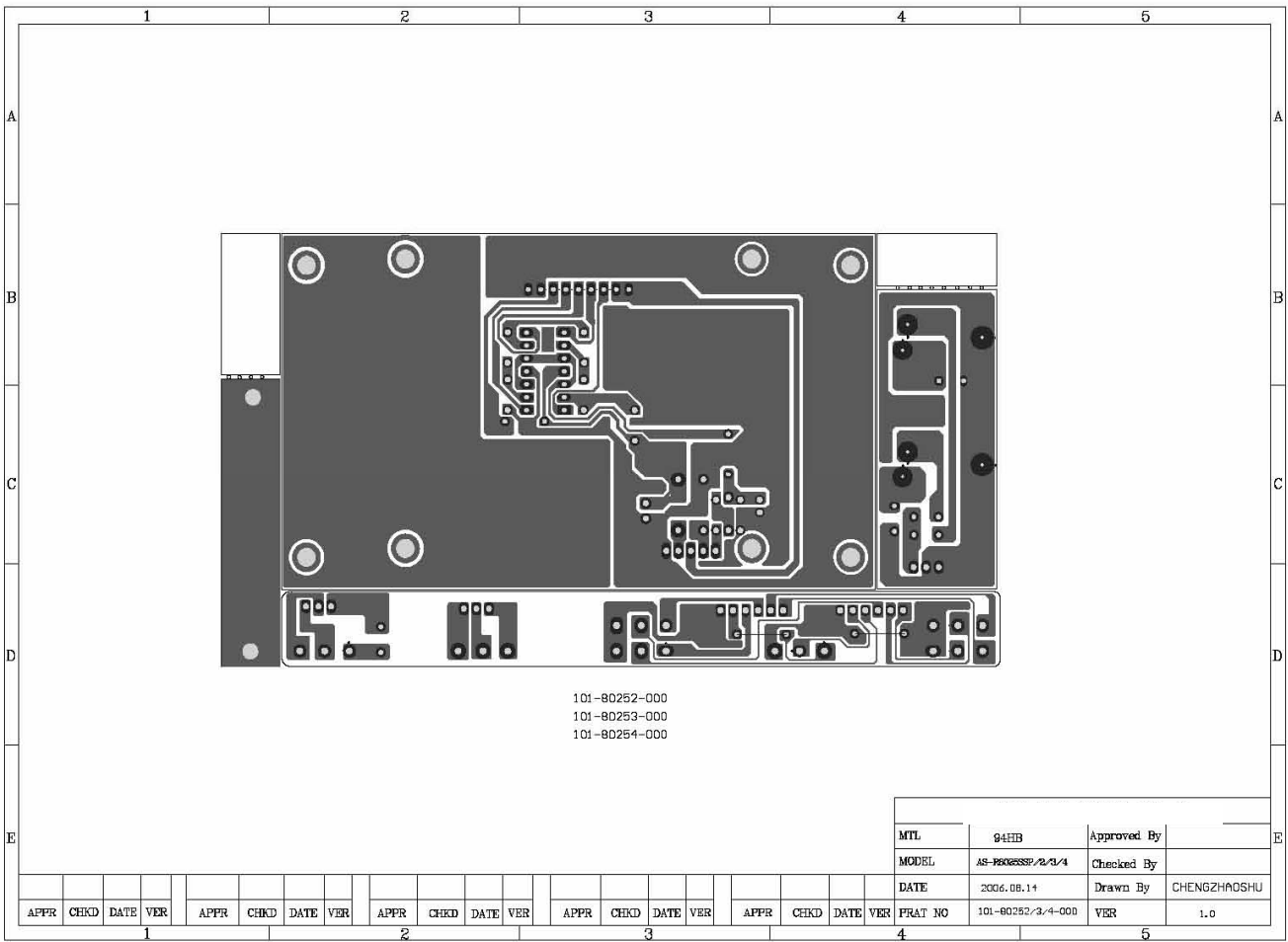
# DRAWING OF PCB BOARD











## **FAMILIAR MALFUNCTION ANALYSIS OF AFTER-SERVICE**

### **Malfunction 1:**

**Phenomenon:** speaker no sound, VFD display no working.

**Suggest resolvent:**

- 1) Check if power plug is well connected to power.
- 2) Check if switch is set in "ON"
- 3) Fuse was melted. (Need checked by professional and replacing)

### **Malfunction 2:**

**Phenomenon:** Subwoofer no sound

**Suggest resolvent:**

- 1) Check if turned up "master volume", subwoofer "volume"
- 2) Check if have set to "2.1 input"
- 3) Check if have input signal that under 200Hz frequency

### **Malfunction 3:**

**Phenomenon:** Whole system no sound

**Suggest resolvent:**

- 1) Check if input audio frequency cable is well connected.
- 2) Check if output audio frequency equipment are working

### **Malfunction 4:**

**Phenomenon:** 5.1 Channel output no sound

**Suggest resolvent:**

- 1) Check if input cable is well connected to 5.1 channel input RCA
- 2) Check if "mode" have set to 5.1

### **Malfunction 5:**

**Phenomenon:** resonance while power on

**Suggest resolvent:**

- 1) Need checked & repaired by professional.