



AKAI

АКУСТИЧЕСКАЯ СИСТЕМА

Model:

AS-R8035SSP

SERVICE MANUAL

General safety instructions

To avoid the risk of an electronic shock, you should not expose the device to rain or moisture. Consequently, do not use the device in the immediate vicinity of water, for example near a bath tub, a swimming pool or in a damp cellar.

Use the device only for the intended purpose. only connect the device at a properly installed plug socket. Pay attention that the specified voltage corresponds to the voltage of plug socket.

when using external mains supply, pay attention to the correct polarity and voltage. Always place the batteries in the correct direction.

Assemble the device in such a way that the available ventilation openings are not covered.

Never open the housing of the device. Incorrect repairs can constitute a considerable risk of the user. Should the device become damaged, in particular the mains supply cable, do not operate the device any longer, but rather have it repaired by an expert. Check the mains supply cable regularly for damage. For safety reasons a broken or damaged mains lead may only be replaced by an equivalent lead from the manufacturer, our customer service department or a similar qualified person.

These symbols may be found on the unit and are intended to indicate the following:



the lightning symbol should advise the user of parts in the inside of the device which carry dangerously high voltage level.



the symbol with an exclamation mark should advise the user of important operation or maintenance instructions in the accompanying documentation.

Contents

Cover-----	P1
General safety instruction-----	P2
Exploded view of the Subwoofer-----	P3
Exploded view of the satellite-----	P4
Schematic diagram-----	P5
Drawing of PCB board-----	P6--P9
Part list-----	P10
Familiar malfunction analysis-----	P11

Specification Data:

RMS output:110W(35W+15W*5)

Speaker Unit:

subwoofer: 5.25"

satellite: 3"*5

Distortion: 0.3% 1W 1KHz

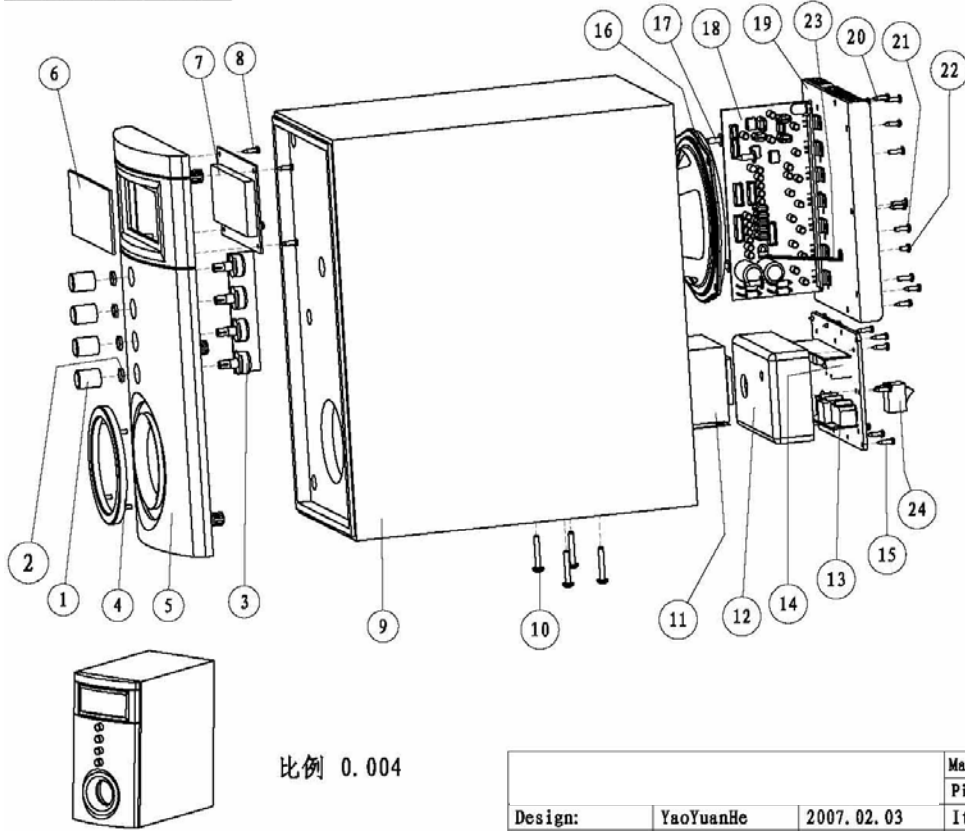
Frequency Response: 30Hz-20KHz

S/N Ratio: >=60dB

Seperation: >=45dB

EXPLODED VIEWS OF THE SUBWOOFER

IFAN08	Basic	Normal	Other
	Optional	Tolerance	Package
>15	± 0.1	± 0.2	± 1.0
5-60	± 0.15	± 0.3	
>150	± 0.2	± 0.4	± 1.5
5-350	± 0.3	± 0.6	
>1000	± 0.45	± 0.7	± 2.0

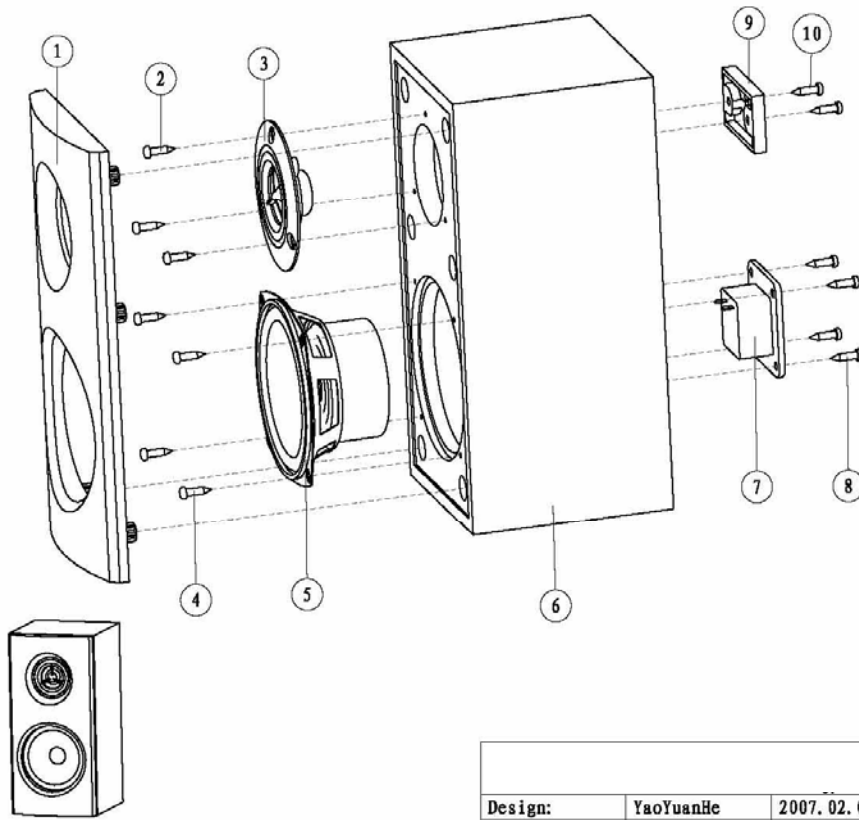


NO:	Component	QUY
1	Knob	4
2	Nut for fixing potentiometer	4
3	Potentiometer	1
4	Duct	5
5	Front panel	1
6	Lens	1
7	Display	1
8	Screw for fixing display	4
9	Wooden box	1
10	Screw for fixing transformer	4
11	Transformer	1
12	Airproof box	1
13	Output board	1
14	Input board	1
15	Screw for fixing terminal board	25
16	Speaker	1
17	Screw for fixing speaker	4
18	Amplifier board	1
19	Radiator	1
20	Screw for fixing radiator	8
21	Screw for fixing amplifier board	5
22	Screw for fixing bar	2
23	Fixing bar	1
24	Power switch	1

			Material NO.	960-80350-000
			Picture NO.	RDW-07020311
Design:	YaoYuanHe	2007.02.03	Item	AS8035SSP SUB Explode map
Auditing:			Unit:mm	Material: Colour:

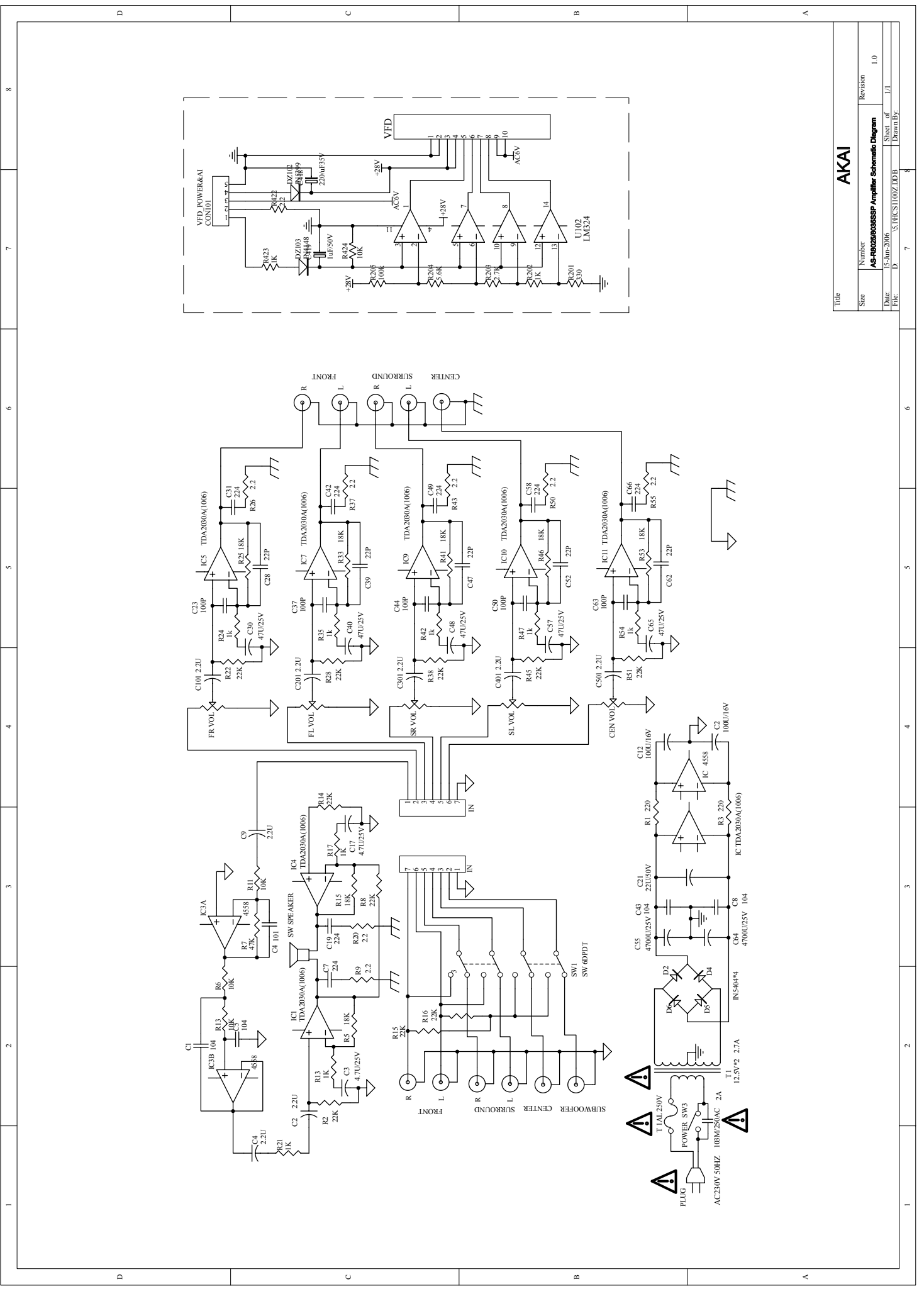
EXPLODED VIEW OF THE SATELLITE

GRADE	Exact	Normal	Other
	Optional Tolerance	Package	
>15	±0.1	±0.2	±1.0
>40	±0.15	±0.3	
>100	±0.2	±0.4	
>300	±0.3	±0.5	
>1000	±0.45	±0.7	±2.0



NO:	Component	QUY
1	front panel	1
2	Screw for fixing althorn	3
3	Althorn	1
4	Screw for fixing speaker	4
5	speaker	1
6	Wooden box	1
7	Cable buckle	1
8	Screw for fixing cable buckle	4
9	Wall mount	1
10	Screw for fixing wall mount	2

Design:	YaoYuanHe	2007. 02. 03	Material NO.	970-80350-000
Auditing:			Picture NO.	RDW-07020312
			Item:	AS8025SSP satellite explode map
			Unit: mm	Material:
				Colour:



AKAI

Title	AKAI
Number	AB-R0206036SSP Amplifier Schematic Diagram
Revision	1.0
Date	15-Jun-2006
File	3.LUCS1100Z.DDB
Drawn By	

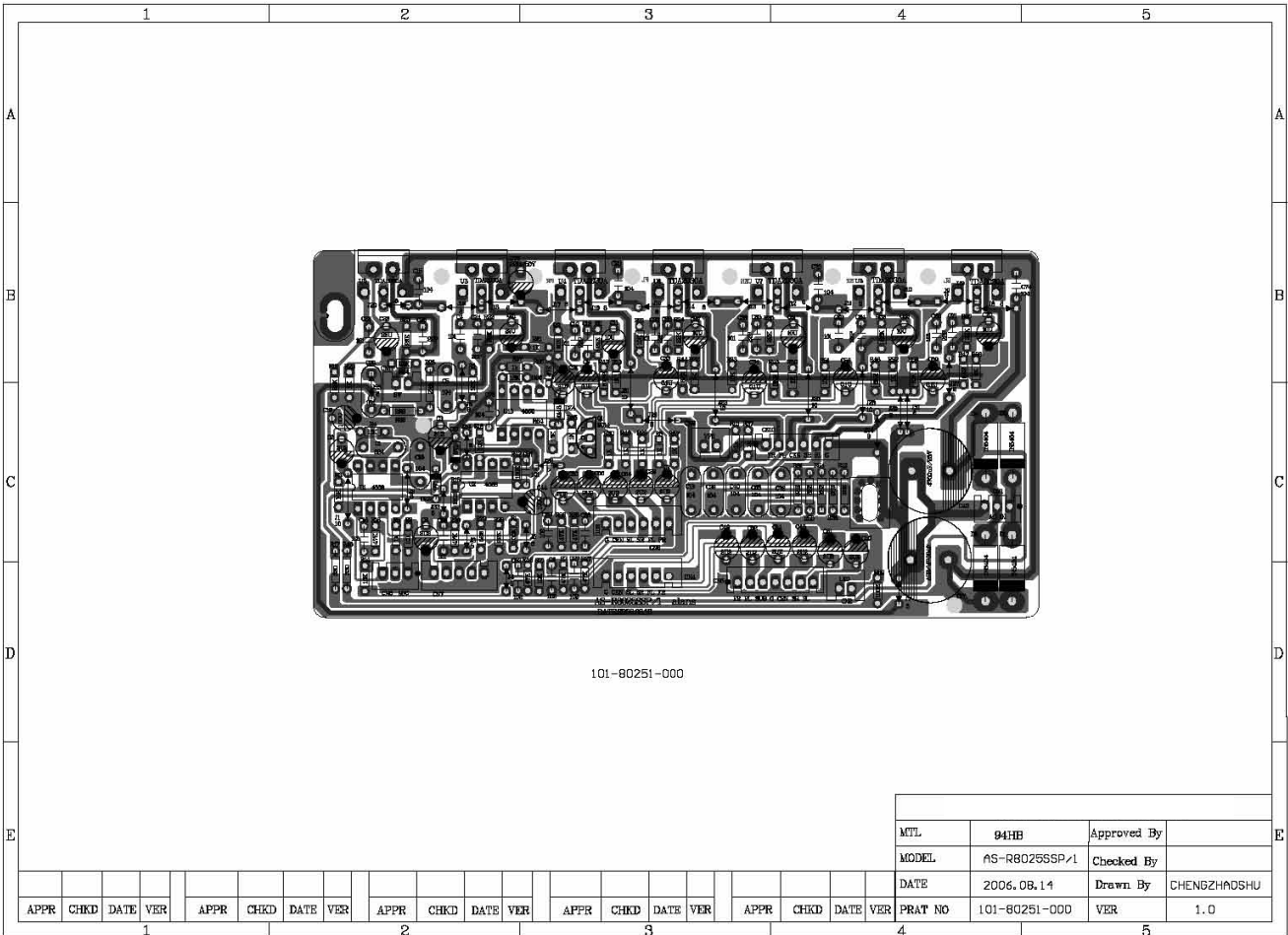
1 2 3 4 5 6 7 8

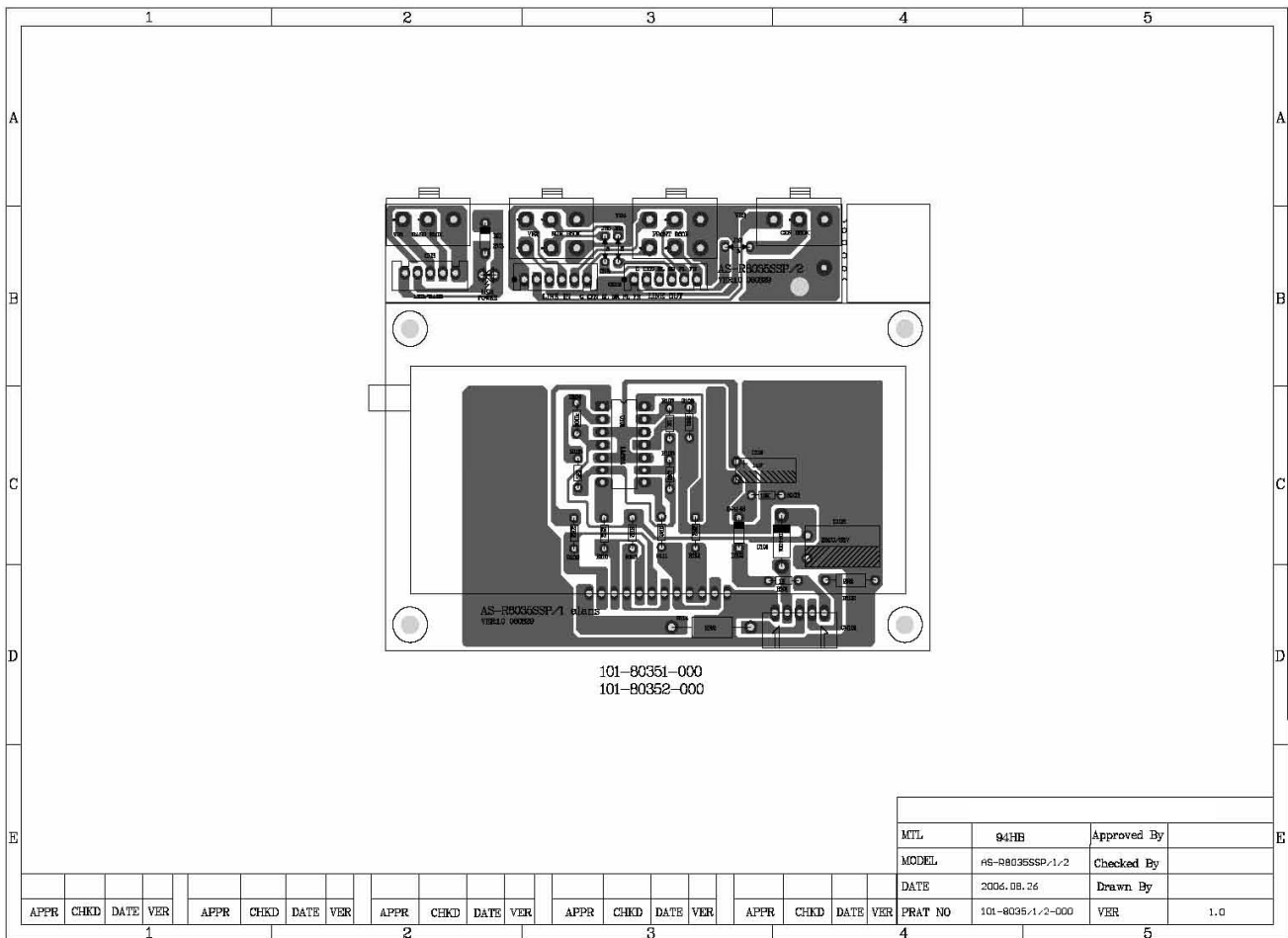
1 2 3 4 5 6 7 8

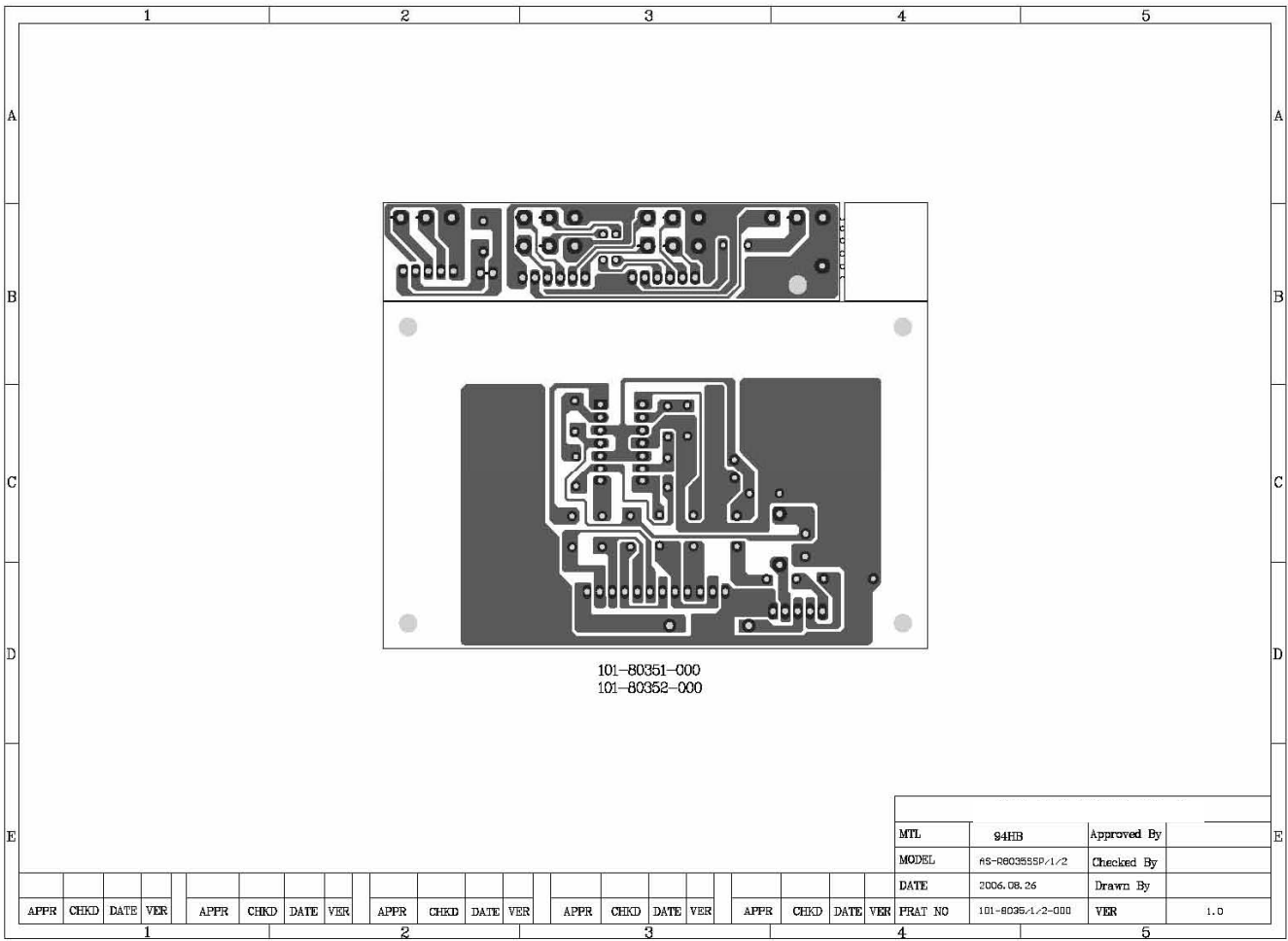
D C B A

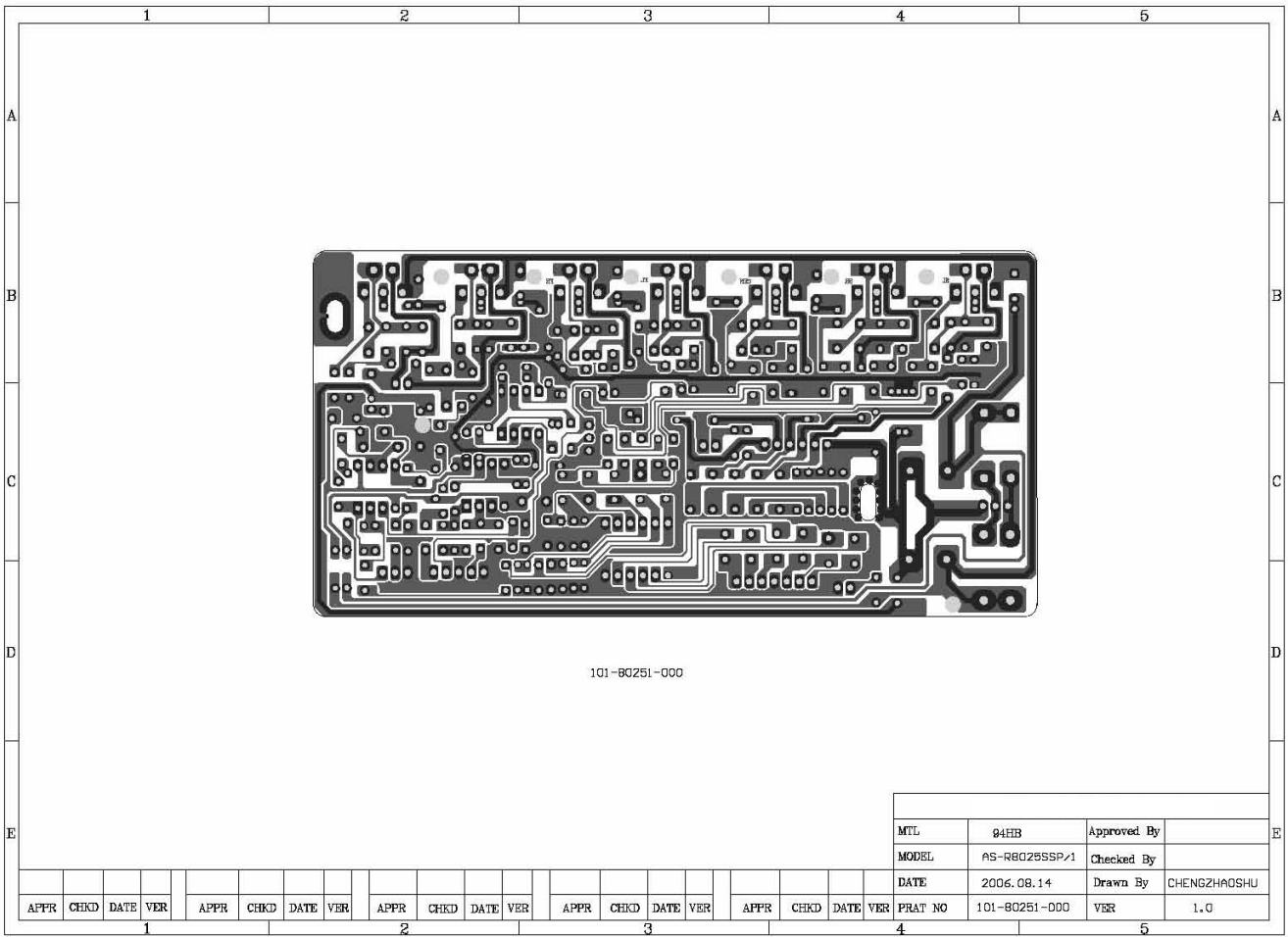
D C B A

DRAWING OF PCB BOARD









FAMILIAR MALFUNCTION ANALYSIS OF AFTER-SERVICE

Malfunction 1:

Phenomenon: speaker no sound, VFD display no working.

Suggest resolvent:

- 1) Check if power plug is well connected to power.
- 2) Check if switch is set in "ON"
- 3) Fuse was melted. (Need checked by professional and replacing)

Malfunction 2:

Phenomenon: Subwoofer no sound

Suggest resolvent:

- 1) Check if turned up "master volume", subwoofer "volume"
- 2) Check if have set to "2.1 input"
- 3) Check if have input signal that under 200Hz frequency

Malfunction 3:

Phenomenon: Whole system no sound

Suggest resolvent:

- 1) Check if input audio frequency cable is well connected.
- 2) Check if output audio frequency equipment are working

Malfunction 4:

Phenomenon: 5.1 Channel output no sound

Suggest resolvent:

- 1) Check if input cable is well connected to 5.1 channel input RCA
- 2) Check if "mode" have set to 5.1

Malfunction 5:

Phenomenon: resonance while power on

Suggest resolvent:

- 1) Need checked & repaired by professional.