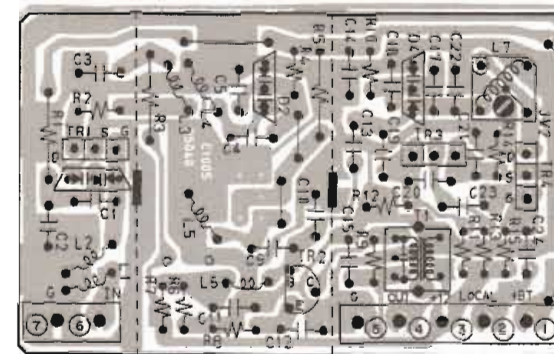


# **AKAI**

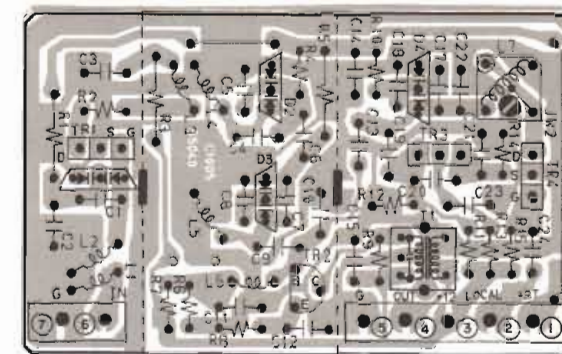
## **MODEL AT-A102/L**

### **SCHEMATIC DIAGRAM AND PC BOARD**

1. FRONT END PCB, POWER PCB, POWER SUPPLY PCB, TUNER PCB . . . . .	2
2. AT-A102 SCHEMATIC DIAGRAM . . . . .	3
3. AT-A102L SCHEMATIC DIAGRAM . . . . .	4
4. FRONT END PCB, POWER PCB, POWER SUPPLY PCB, TUNER PCB . . . . .	5
5. AT-A102 BLOCK DIAGRAM . . . . .	6

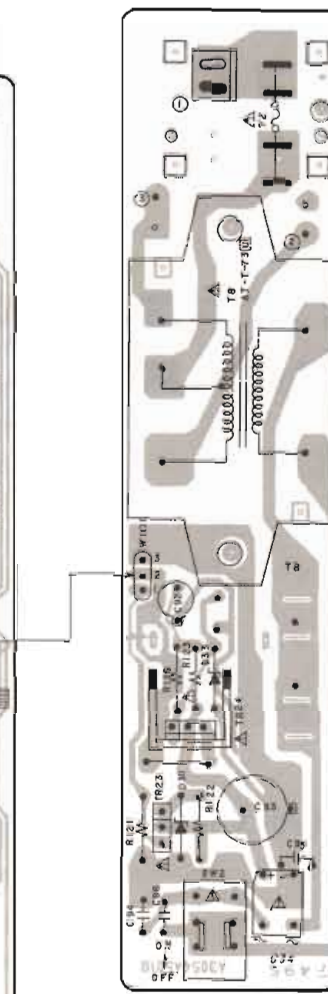
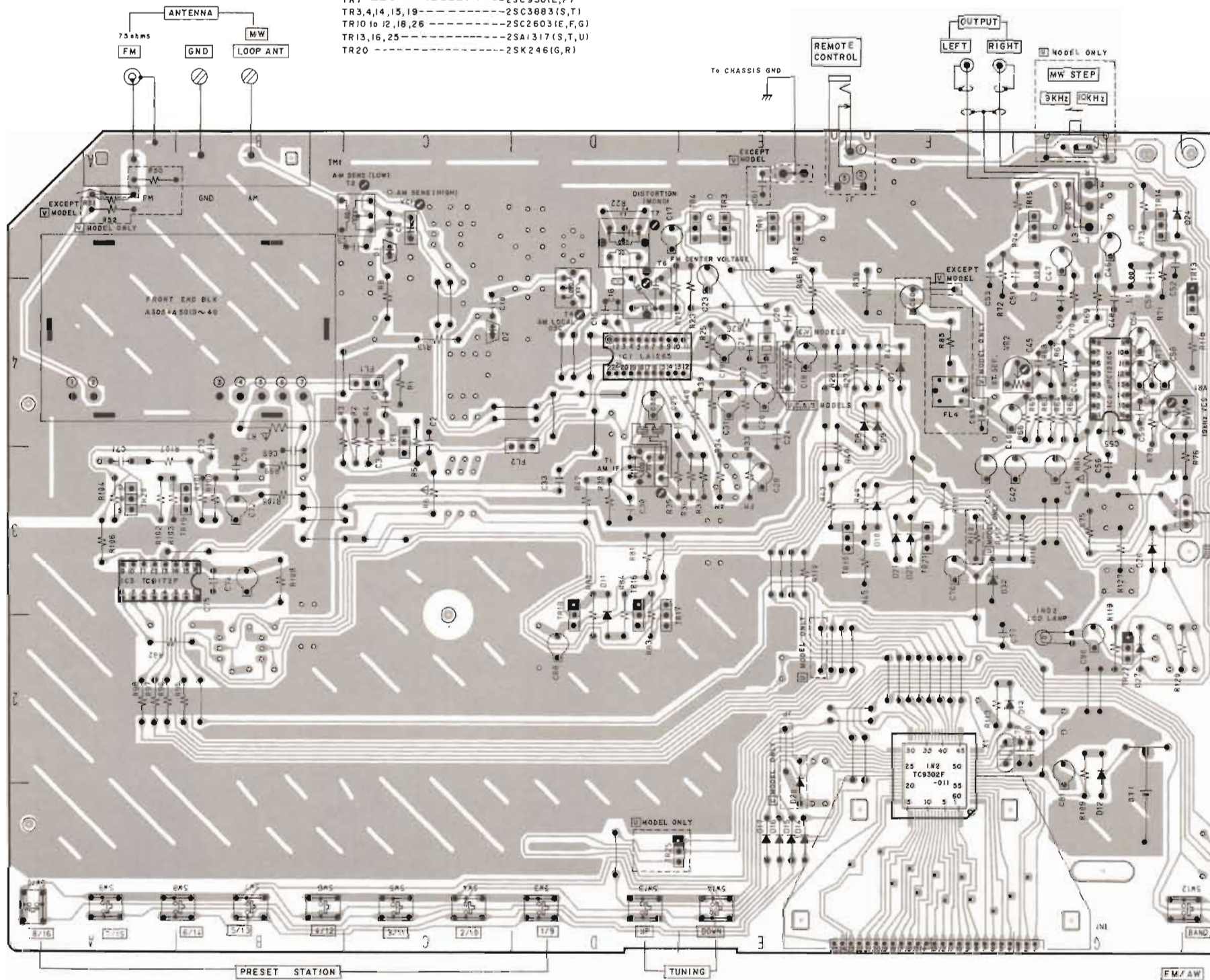


FRONT END PCB C1005B5040

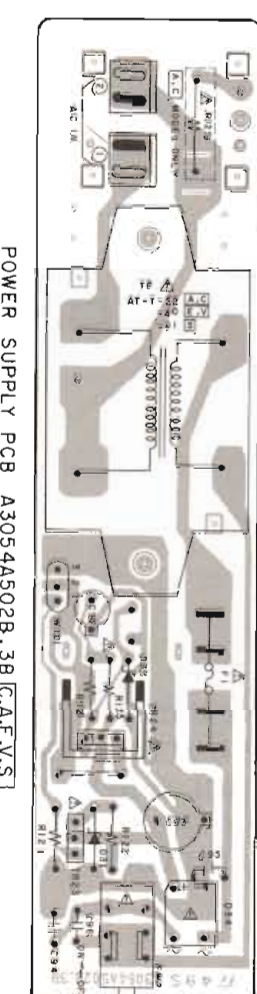


FRONT END PCB C1005B5040  
 MODEL ONLY

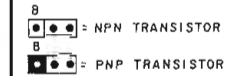
- TR1 -----2SC930(E,F)
- TR3,4,14,15,19-----2SC3883(S,T)
- TR10 to 12,18,26-----2SC2603(E,F,G)
- TR13,16,25-----2SA1317(S,T,U)
- TR20 -----2SK246(G,R)



POWER PCB  
 A3054A501B



POWER SUPPLY PCB A3054A502B, 3B  CAE V.S.

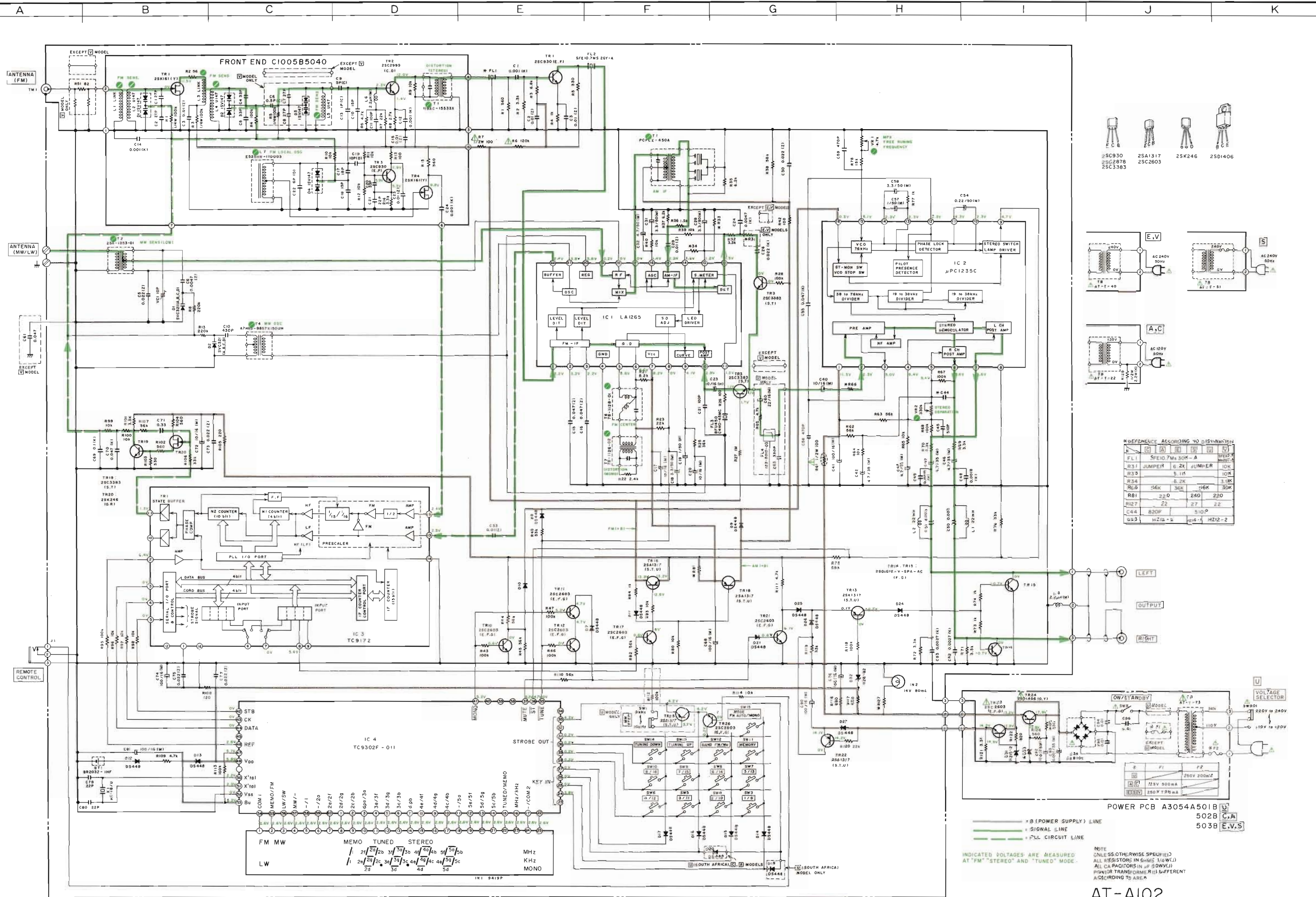


TUNER PCB A3054A501A   
 502A  C.A.  
 503A  E.V.S.

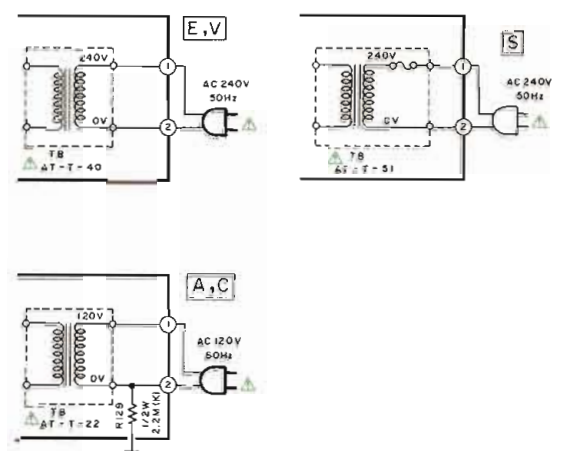
WARNING:  $\Delta$  INDICATES SAFETY CRITICAL COMPONENTS. FOR CONTINUED SAFETY, REPLACE SAFETY CRITICAL COMPONENTS ONLY WITH MANUFACTURER'S RECOMMENDED PARTS.  
 AVERTISSEMENT:  $\Delta$  IL INDIQUE LES COMPOSANTS CRITIQUES DE SÉCURITÉ. POUR MAINTENIR LE DEGRÉ DE SÉCURITÉ DE L'APPAREIL, NE REMPLACER QUE DES PIÈCES RECOMMANDÉES PAR LE FABRICANT.

LOCATION OF COMPONENTS			
IC's	TR's		
IC1---D4	TR1---C3,4	TR13---H4	TR19---B3
IC2---G4	TR3---E5	TR14---G5	TR20---A3
IC3---A,B,3	TR4---E5	TR15---G5	TR21---F3
IC4---F1,2	TR10---E,F,3	TR16---D2,3	TR22---G2
	TR11---E5	TR17---D2,3	TR25---H1
	TR12---E5	TR18---D2,3	TR26---D,E,1





- 25C930
- 25C2878
- 25C3383
- 25A1317
- 25C2603
- 25K246
- 25D1406



\*REFERENCE ACCORDING TO DISTINCTION

REF.	TYPE	VALUE	REF.	TYPE	VALUE
FL1	SPF10.7M	30M-A	TR19	25C3383	15-T1
R31	JUMPER	0.2K	JUMPER	10K	
R33		5.1K		10K	
R34		5.2K		3.3K	
R65	56K	36K	16K	22K	
R81	220	240	220		
R127	22	27	22		
C44	820P	510P			
DS3	H212-a	H05-1	H212-2		

POWER PCB A3054A501B  
 502B C.A.  
 503B E.V.S.

— (B POWER SUPPLY) LINE  
 — SIGNAL LINE  
 — PLL CIRCUIT LINE

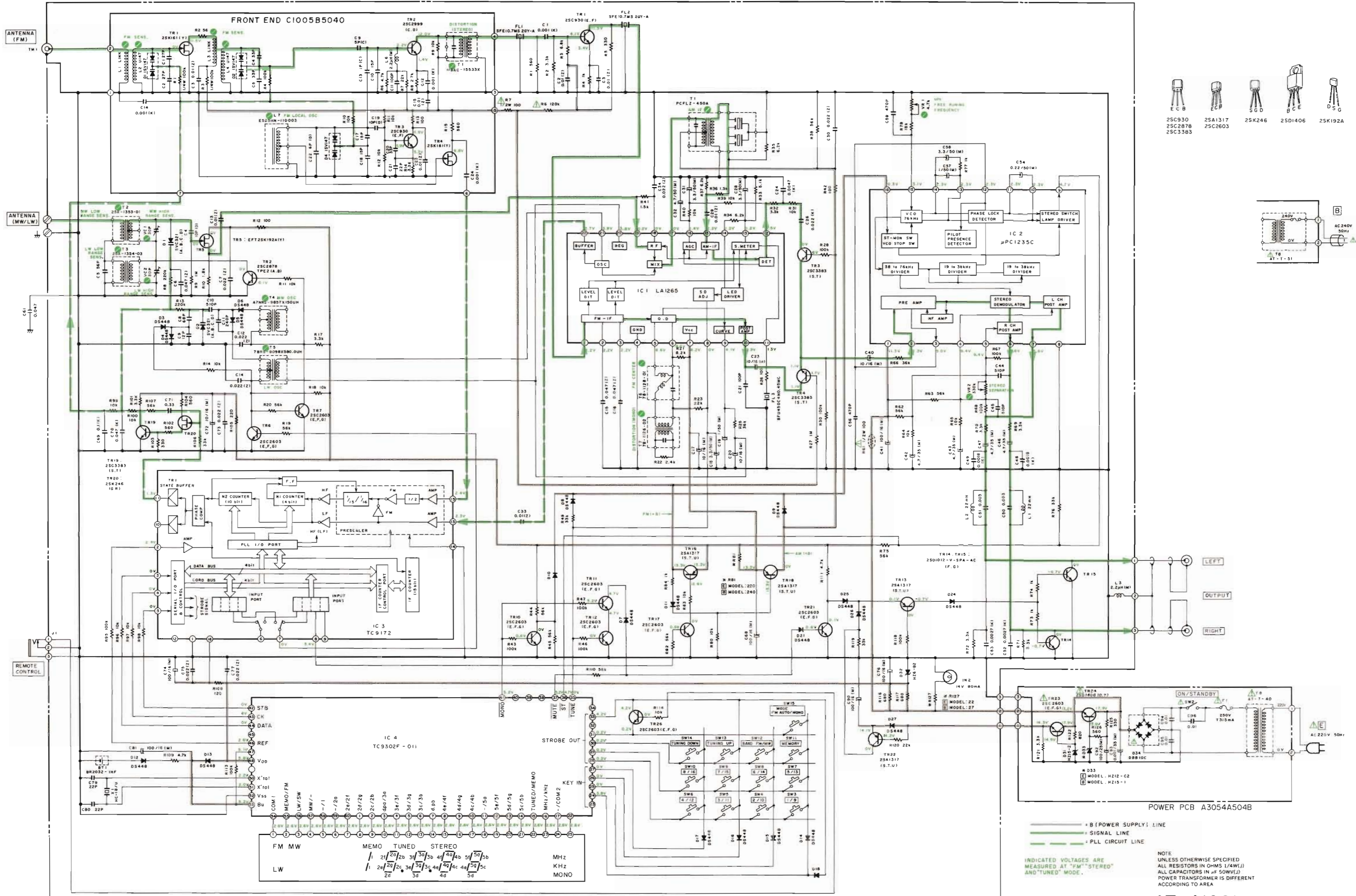
INDICATED VOLTAGES ARE MEASURED AT "FM" "STEREO" AND "TUNED" MODE.

NOTE: ONLE (S) OTHERWISE SPECIFIED) ALL RESISTORS IN OHMS (1/K=K) ALL CAPACITORS IN µF (500K=500N) POWER TRANSFORMER IS DIFFERENT ACCORDING TO AREA.

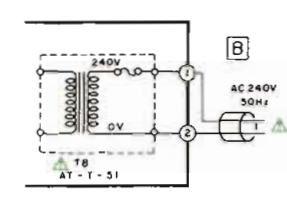
TUNER (U) PCB A3054A501A  
 TUNER (C) PCB A3054A502A  
 TUNER (E) PCB A3054A503A

AT-A102  
 SCHEMATIC DIAGRAM  
 No. 860303A

WARNING: INDICATES SAFETY CRITICAL COMPONENTS FOR CONTINUED SAFETY. REPLACE SAFETY CRITICAL COMPONENTS ONLY WITH MANUFACTURER'S RECOMMENDED PARTS.  
 AVERTISSEMENT: INDIQUE LES COMPOSANTS CRITIQUES DE SECURITE. NE REMPLACEZ QUE DES PIECES RECOMMANDEES PAR LE FABRICANT.



- 25C930
- 25C2876
- 25C3363
- 25A1317
- 25C2603
- 25K246
- 25D1406
- 25K192A



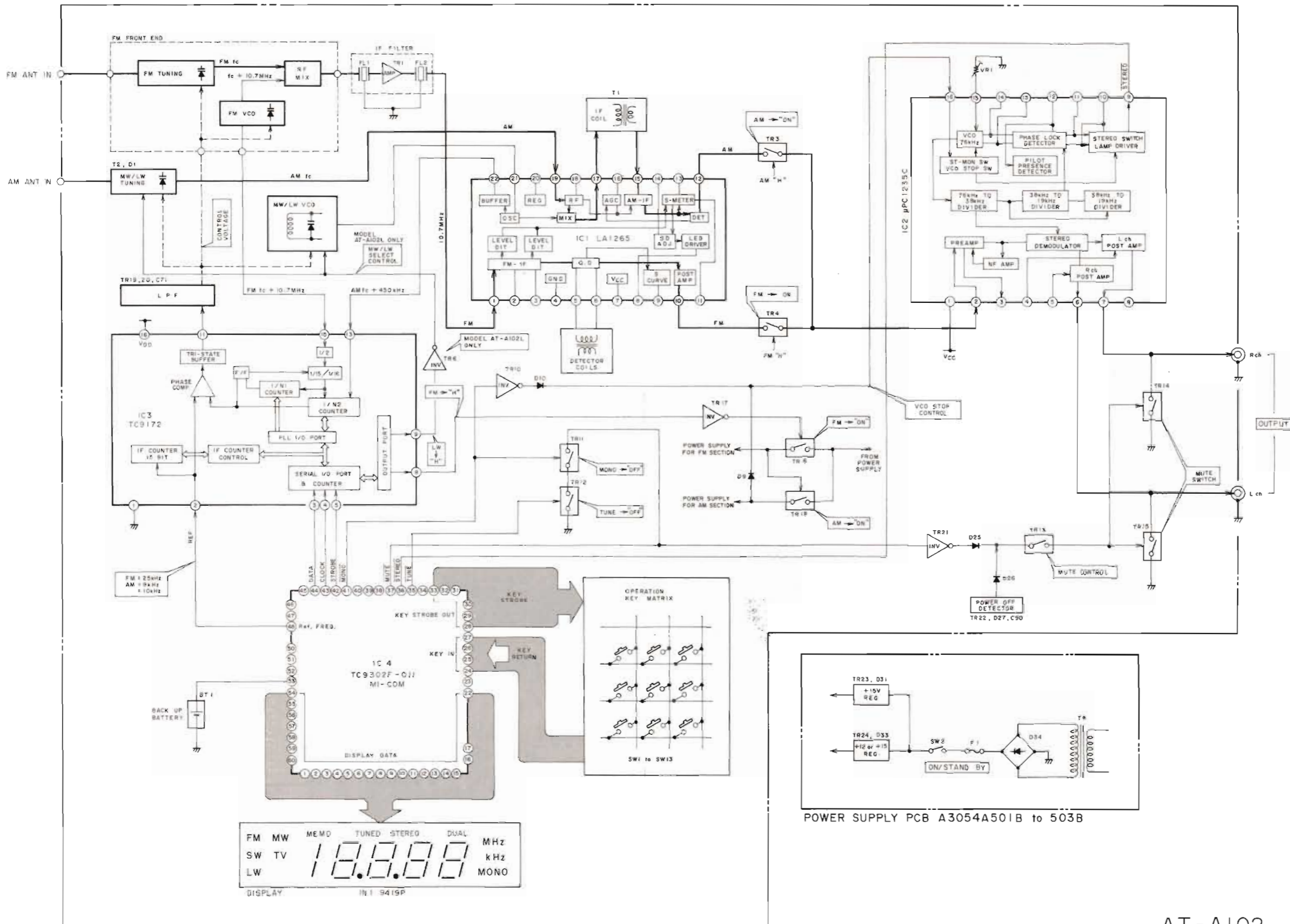
— B (POWER SUPPLY) LINE  
 — SIGNAL LINE  
 — PLL CIRCUIT LINE

INDICATED VOLTAGES ARE MEASURED AT "FM" "STEREO" AND "TUNED" MODE.

NOTE  
 UNLESS OTHERWISE SPECIFIED  
 ALL RESISTORS IN OHMS (1/4W)  
 ALL CAPACITORS IN μF (50WV)  
 POWER TRANSFORMER IS DIFFERENT  
 ACCORDING TO AREA

WARNING: INDICATES SAFETY CRITICAL COMPONENTS. FOR CONTINUED SAFETY, REPLACE SAFETY CRITICAL COMPONENTS ONLY WITH MANUFACTURER'S RECOMMENDED PARTS.  
 AVERTISSEMENT: ΔΔΔ INDIQUE LES COMPOSANTS CRITIQUES DE SÉCURITÉ. POUR MAINTENIR LE DEGRÉ DE SÉCURITÉ DE L'APPAREIL, NE REMPLACEZ QUE DES PIÈCES RECOMMANDÉES PAR LE FABRICANT.

AT - A102

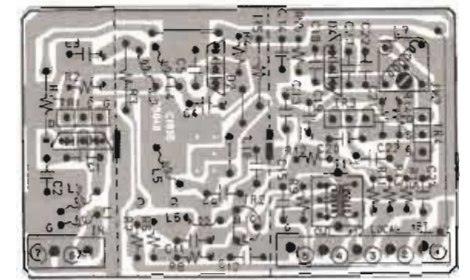


TUNER PCB A3054A501A to 503A

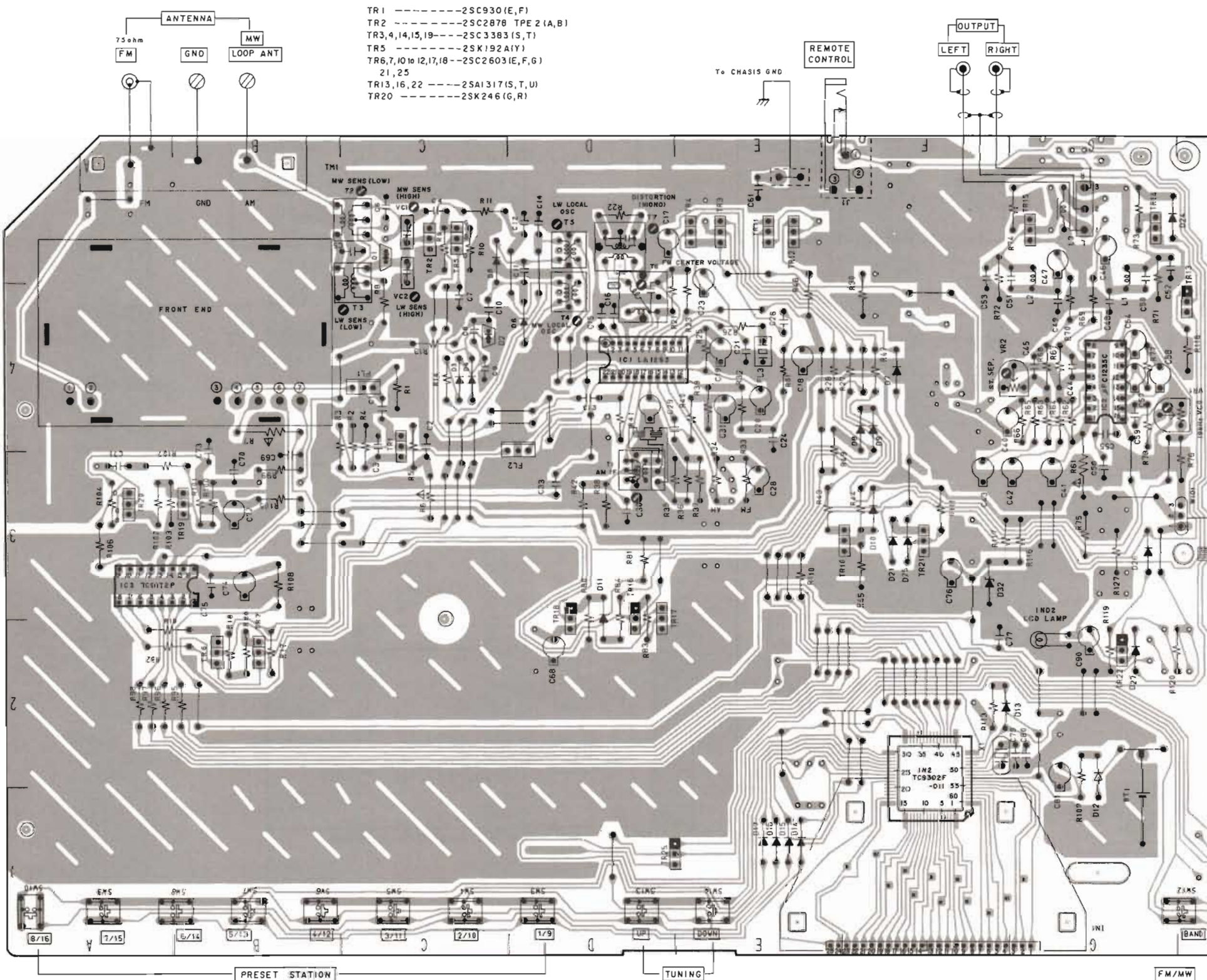
POWER SUPPLY PCB A3054A501B to 503B



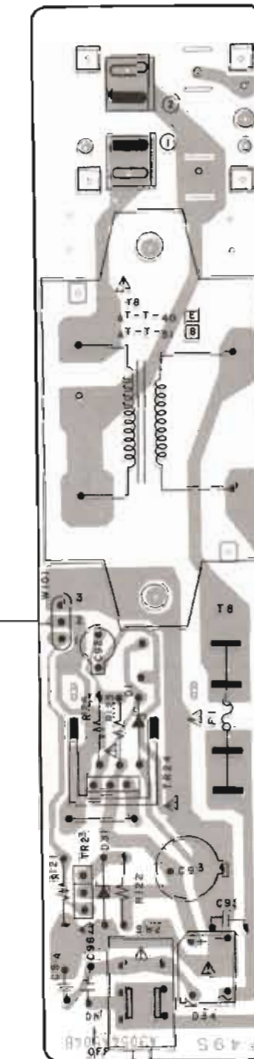
AT-A102  
BLOCK DIAGRAM  
No. 860302A



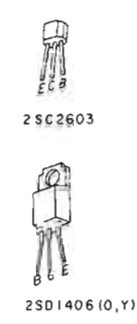
FRONT END PCB C1005B5040



- TR 1 -----2SC930 (E, F)
- TR 2 -----2SC2878 TPE 2 (A, B)
- TR 3, 4, 14, 15, 19 ---2SC3383 (S, T)
- TR 5 -----2SK192A (Y)
- TR 6, 7, 10, 16, 17, 18 ---2SC2603 (E, F, G)
- 21, 25
- TR 13, 16, 22 -----2SA1317 (S, T, U)
- TR 20 -----2SK246 (G, R)



POWER ON/STANDBY POWER PCB A3054A504B [E, B]



TR 23 2SC2603 (E, F, G)  
TR 24 2SD1406 (O, Y)

PRESET STATION



TUNING



FM/MW FM AUTO/MONO

LOCATION OF COMPONENTS

- IC's
- IC1---D4
- IC2---G4
- IC3---A, B3
- IC4---F1, 2
- TR's
- TR1---C3, 4
- TR2---C5
- TR3---E5
- TR4---E5
- TR5---C5
- TR6---B2
- TR7---B2
- TR10---E, F3
- TR11---E5
- TR12---E5
- TR13---H4
- TR14---G5
- TR16---D2, 3
- TR17---D2, 3
- TR18---D2, 3
- TR19---B3
- TR20---A3
- TR21---F3
- TR22---G2
- TR25---H1
- TR26---D, E, I



2SC3383  
2SC2878  
2SC930  
2SA1317  
2SC2603  
2SK192A  
2SK246

TUNER PCB A3054A504A

WARNING: Δ INDICATES SAFETY CRITICAL COMPONENTS FOR CONTINUED SAFETY. REPLACE SAFETY CRITICAL COMPONENTS ONLY WITH MANUFACTURER'S RECOMMENDED PARTS.  
AVERTISSEMENT: Δ ILL INDIQUE LES COMPOSANTS CRITIQUES DE SÉCURITÉ. POUR MAINTENIR LE DEGRÉ DE SÉCURITÉ DE L'APPAREIL, NE REMPLACER QUE DES PIÈCES RECOMMANDÉES PAR LE FABRICANT.