

## SECTION 2

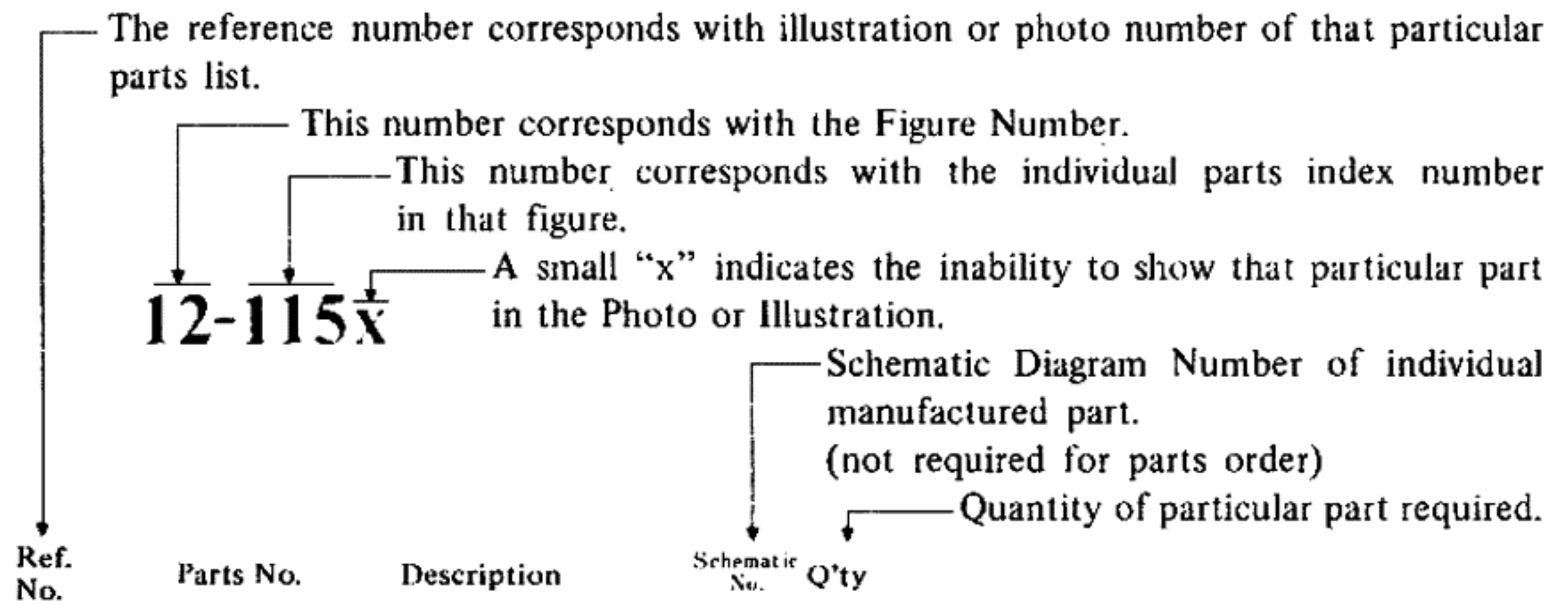
# PARTS LIST

### TABLE OF CONTENTS

|        |  |    |
|--------|--|----|
| FIG. 1 | CZ MECH. BLOCK . . . . .                                   | 18 |
| FIG. 2 | MECH. FRAME ASSEMBLY BLOCK . . . . .                       | 20 |
| FIG. 3 | PRE-AMP. P.C. BOARD (CZ-5021) BLOCK . . . . .              | 22 |
| FIG. 4 | OSC., POWER SUPPLY P.C. BOARD<br>(CZ-5020) BLOCK . . . . . | 24 |
| FIG. 5 | DOLBY P.C. BOARD (CG-5202) BLOCK . . . . .                 | 25 |
| FIG. 6 | MAIN AMP. P.C. BOARD (CG-5403) BLOCK . . . . .             | 26 |
| FIG. 7 | AMP. ASSEMBLY BLOCK . . . . .                              | 27 |
| FIG. 8 | FINAL ASSEMBLY BLOCK . . . . .                             | 29 |

## HOW TO USE THIS PARTS LIST

1. This parts list is compiled by various individual blocks based on assembly process.
2. When ordering parts, please describe parts number, serial number, and model number in detail.
3. How to read List



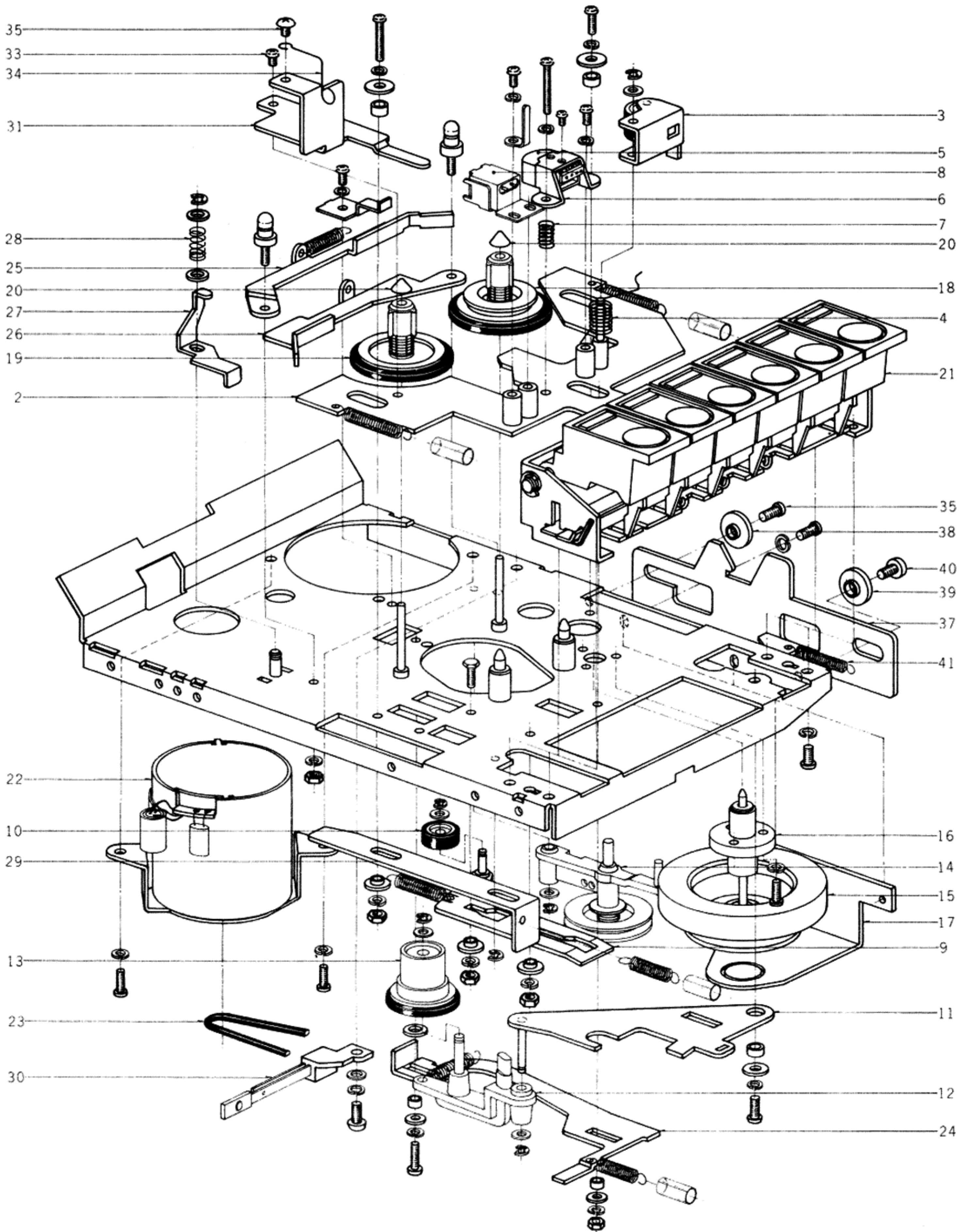
| <b>FLYWHEEL BLOCK #13</b> |        |                            |         |   |
|---------------------------|--------|----------------------------|---------|---|
| 12-115x                   | 800425 | Flywheel Block Assy. Comp. | RID-13  | 1 |
| 12-116                    | 244506 | Flywheel Only              | RID-233 | 1 |
| 12-117x                   | 244754 | Felt, Flywheel             | RID-275 | 1 |
| 12-118                    | 251324 | Main Metal Case            | RID-236 | 1 |
| 12-119                    | 253080 | Main Metal                 | RID-237 | 1 |

4. The symbol numbers shown on the P.C. Board list can be matched with the Composite Views of Components of the Schematic Diagram or Service Manual.
5. The indications of Resistors and Capacitors in the photos of P.C. Board are being eliminated.
6. The shape of the parts and parts name, etc. can be confirmed by comparing them with the parts shown on the Electrical Parts Table of P.C. Board.
7. Both the kind of part and installation position can be determined by the Parts Number. To determine where a parts number is listed, utilize Parts Index at end of Parts List.  
It is necessary first of all to find the Parts Number. This can be accomplished by using the Reference Number listed at right of parts number in the Parts Index. (meaning of ref. no. outlined in Item 3 above).
8. Utilize separate "Price List for Parts" to determine unit price. The most simple method of finding parts Price is to utilize the reference number.

# ELECTRICAL PARTS TABLE

|  |  |  |   |
|--|--|--|---|
| <p>Because the indication of resistors and capacitors in the P.C. Board photos are being eliminated, please confirm parts name and shape by comparing them with the parts shown in this table.</p> | <p style="text-align: center;">1</p>  <p style="text-align: center;">Solid Resistor</p>   | <p style="text-align: center;">2</p>  <p style="text-align: center;">Insulator Type<br/>Carbon Resistor</p> | <p style="text-align: center;">3</p>  <p style="text-align: center;">Metal Oxide Film Resistor</p>                             |
| <p style="text-align: center;">4</p>  <p style="text-align: center;">Cement Resistor</p>                          | <p style="text-align: center;">5</p>  <p style="text-align: center;">Wire-Wound Resistor</p>  | <p style="text-align: center;">6</p>  <p style="text-align: center;">Thermistor</p>                         | <p style="text-align: center;">7</p>  <p style="text-align: center;">Enamel Resistor</p>                                       |
| <p style="text-align: center;">1</p>  <p style="text-align: center;">MP Capacitor (Tubular Type)</p>             | <p style="text-align: center;">2</p>  <p style="text-align: center;">Plastic Capacitor</p>   | <p style="text-align: center;">3</p>  <p style="text-align: center;">Mylar Capacitor</p>                   | <p style="text-align: center;">4</p>  <p style="text-align: center;">VFM (Hi-Q) Capacitor</p>                                 |
| <p style="text-align: center;">5</p>  <p style="text-align: center;">Mylar Capacitor</p>                        | <p style="text-align: center;">6</p>  <p style="text-align: center;">Tantalum Capacitor</p>   | <p style="text-align: center;">7</p>  <p style="text-align: center;">Oil Capacitor (Tubular Type)</p>     | <p style="text-align: center;">8</p>  <p style="text-align: center;">Vertical Type<br/>Tubular Type<br/>Styrol Capacitor</p> |
| <p style="text-align: center;">9</p>  <p style="text-align: center;">Electrolytic Capacitor (Tubular Type)</p>  | <p style="text-align: center;">10</p>  <p style="text-align: center;">Vertical Type<br/>Tubular Type<br/>Electrolytic Capacitor</p> | <p style="text-align: center;">11</p>  <p style="text-align: center;">Ceramic Capacitor</p>               | <p style="text-align: center;">12</p>  <p style="text-align: center;">Metalized Mylar (Paper) Capacitor</p>                  |
| <p style="text-align: center;">13</p>  <p style="text-align: center;">Trimmer Condenser</p>                     |  | <p style="text-align: center;">VR</p>  <p style="text-align: center;">Semi-Fixed Volume</p>               |   |
| <p style="text-align: center;">L</p>  <p style="text-align: center;">Ferri Inductor</p>                         | <p style="text-align: center;">TR</p>  <p style="text-align: center;">Transistor</p>   |  |   |
| <p style="text-align: center;">CR</p>  <p style="text-align: center;">Spark Quencher</p>                        | <p style="text-align: center;">D</p>  <p style="text-align: center;">Diode (Silicon, Zener, Germanium)</p>                         |  |   |

FIG. 1 ILLUSTRATION OF CZ MECH. BLOCK

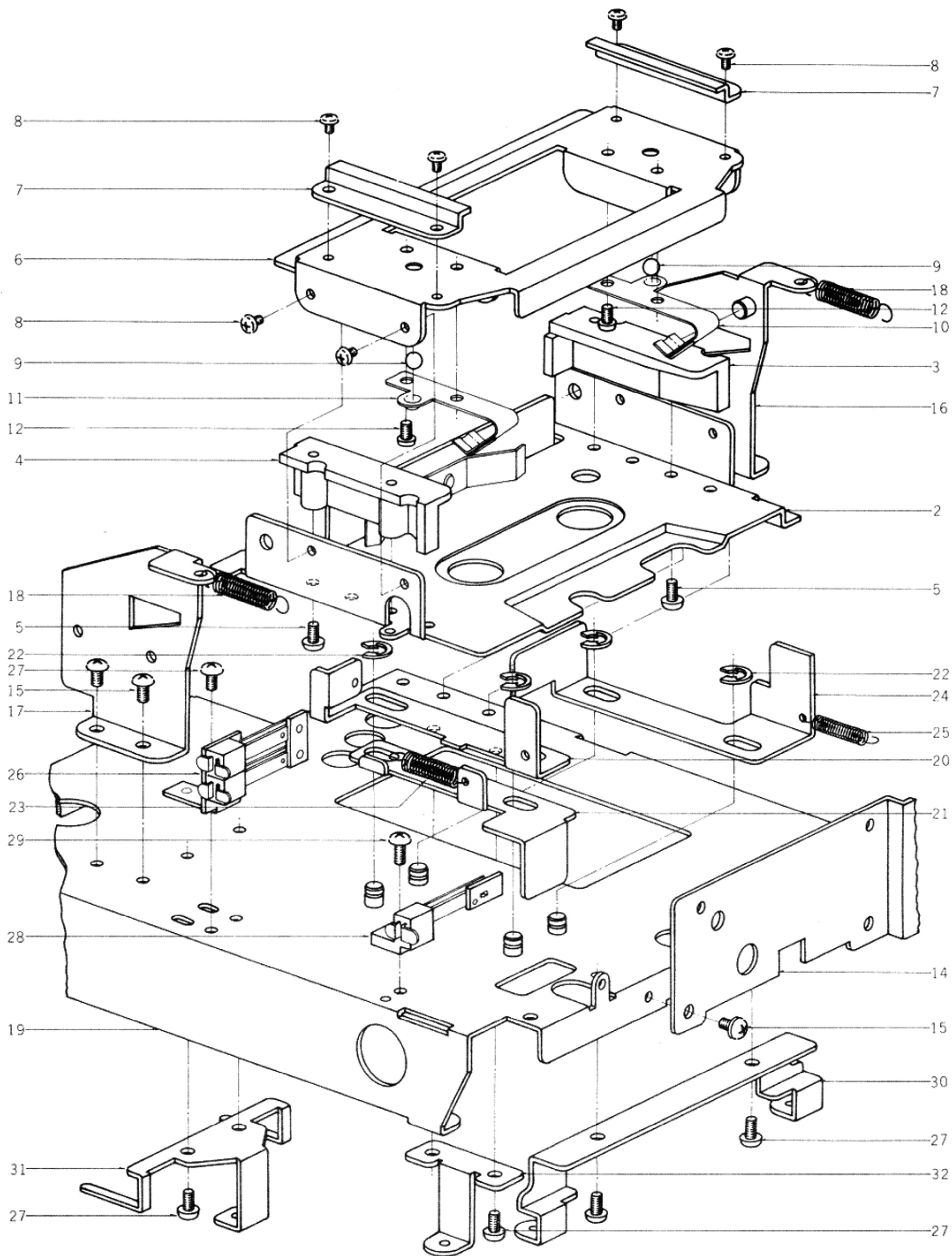




## CZ MECH. BLOCK

| Ref. No. | Parts No. | Description                              | Schematic No. | Q'ty |
|----------|-----------|--|---------------|------|
| 1-1x     | CZ555704  | Mechanism Assy. Comp.                    |               |      |
|          |           | B-46-A                                   | 22000177      | 1    |
| 1-2      | CZ717153  | Head Retaining Plate Comp.               | 20002128      | 1    |
| 1-3      | CZ717164  | Pinch Roller Comp.                       | 20000016      | 1    |
| 1-4      | CZ717175  | Pinch Roller Spring (C)                  | 12610098      | 1    |
| 1-5      | CZ589781  | REC/P.B. HEAD P4-303                     | P4-303        | 1    |
| 1-6      | CZ541462  | Head Holder                              | CZ-0001       | 1    |
| 1-7      | CZ549696  | Compression Spring C                     |               |      |
|          |           | (CZ-0002)                                | 12610018      | 1    |
| 1-8      | CZ717197  | ERASE HEAD AE-134                        | 11630034      | 1    |
| 1-9      | CZ717208  | RWD. Slide Plate Comp.                   | 20000013      | 1    |
| 1-10     | CZ717210  | RWD. Roller Comp.                        | 20000003      | 1    |
| 1-11     | CZ717221  | F.FWD. Lever A Comp.                     | 20000010      | 1    |
| 1-12     | CZ717232  | F.FWD. Lever B Comp.                     | 20000023      | 1    |
| 1-13     | CZ717243  | F.FWD. Roller Comp.                      | 20000102      | 1    |
| 1-14     | CZ717254  | Friction Lever Comp.                     | 20001694      | 1    |
| 1-15     | CZ717265  | Flywheel, (w/shaft)                      | 12410011      | 1    |
| 1-16     | CZ717276  | Flywheel Bearing                         | 12410002      | 1    |
| 1-17     | CZ717287  | Flywheel Support Comp.                   | 20000450      | 1    |
| 1-18     | CZ717298  | Reel Support Comp. (R)                   | 20001613      | 1    |
| 1-19     | CZ717300  | Reel Support Comp. (L)                   | 20000012      | 1    |
| 1-20     | CZ717311  | Reel Cap B                               | 12310007      | 2    |
| 1-21     | CZ717322  | Keyboard Comp.                           | 20002149      | 1    |
| 1-22     | CZ717333  | Motor Comp.                              | 20001616      | 1    |
| 1-23     | CZ717344  | Drive Belt                               | 12510039      | 1    |
| 1-24     | CZ717355  | Brake Slide Plate                        | 12110013      | 1    |
| 1-25     | CZ717366  | Right Brake Lever                        | 12110729      | 1    |
| 1-26     | CZ717377  | Left Brake Lever                         | 12110730      | 1    |
| 1-27     | CZ717388  | Safety Lever                             | 12110162      | 1    |
| 1-28     | CZ717390  | Safety Lever Spring                      | 12610035      | 1    |
| 1-29     | CZ542362  | Rec. Lever (A) (CZ-1024)                 | 12110976      | 1    |
| 1-30     | CZ717412  | Leaf SW, Comp.                           | 20001191      | 1    |
| 1-31     | UM541473  | Safety Plate                             | CZ-1002       | 1    |
| 1-32x    | ZW273723  | Spring Washer M2                         |               | 1    |
| 1-33     | ZS464703  | Screw, binding head 2x4                  |               | 1    |
| 1-34     | UM566021  | Head Lead Wire Retainer                  | CZ-5040       | 1    |
| 1-35     | ZS589454  | Screw, truss head 2.6x6                  |               | 2    |
| 1-36x    | EC250918  | Mylar/C. (Vert. Type)                    |               |      |
|          |           | 0.01 $\mu$ F(M)50WV                      | C2            | 2    |
| 1-37     | UM542136  | Cassette Holder Hook Lever               | CZ-1003       | 1    |
| 1-38     | ZW542147  | Graduated Washer A                       | CZ-1004       | 1    |
| 1-39     | ZW542158  | Graduated Washer B                       | CZ-1005       | 1    |
| 1-40     | ZS555737  | ISO Screw, binding head 3x6,<br>w/washer |               | 1    |
| 1-41     | ZG542204  | Spring A                                 | CZ-1010       | 1    |

FIG. 2 ILLUSTRATION OF MECH. FRAME ASSEMBLY BLOCK

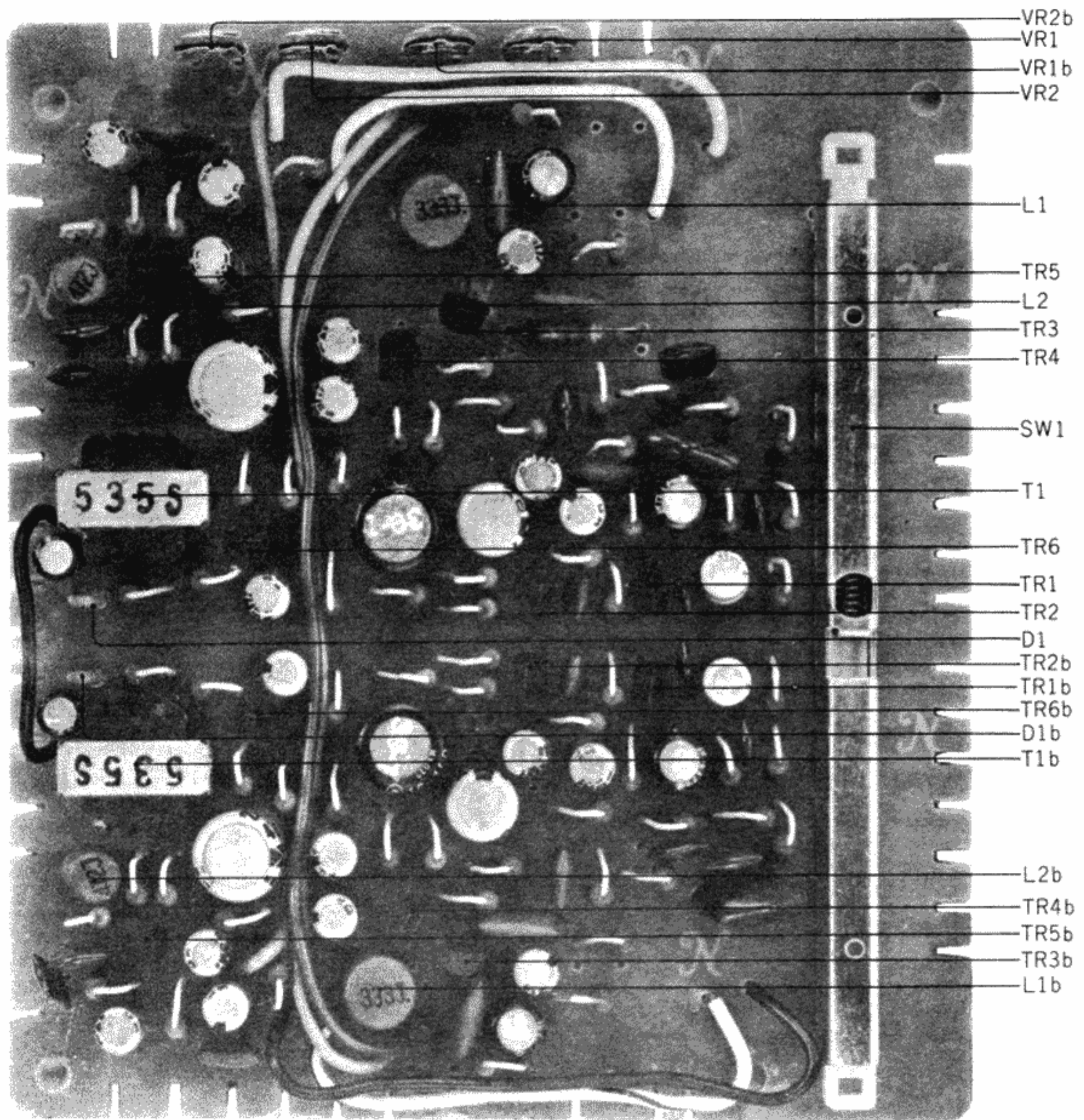


## MECH. FRAME ASSEMBLY BLOCK

| Ref. No.                     | Parts No. | Description                            | Schematic No. | Q'ty |
|------------------------------|-----------|--|---------------|------|
| <b>CASSETTE HOLDER BLOCK</b> |           |  |               |      |
| 2-1x                         | BZ559743  | Cassette Holder Block Comp.            | CZ-1.2        | 1    |
| 2-2                          | UM542417  | Cassette Base, w/spring A              | CZ-2001.4     | 1    |
| 2-3                          | UM542373  | Cassette Holder (Right)                | CZ-2002       | 1    |
| 2-4                          | UM542384  | Cassette Holder (Left)                 | CZ-2003       | 1    |
| 2-5                          | ZW555761  | Tapping Screw #3 3x8 (pan)             |               | 4    |
| 2-6                          | UM542406  | Cassette Base Cover                    | CZ-2005       | 1    |
| 2-7                          | UM541798  | Lid Cover Guide                        | CZ-2008       | 2    |
| 2-8                          | ZS417251  | Screw, binding head 2.3x3              |               | 8    |
| 2-9                          | MV269965  | Steel Ball D4                          |               | 2    |
| 2-10                         | UM541776  | Cassette Retainer Spring               |               |      |
|                              |           | (Right)                                | CZ-2006       | 1    |
| 2-11                         | UM541787  | Cassette Retainer Spring(Left)         | CZ-2007       | 1    |
| 2-12                         | ZW564401  | Screw, binding head 2.6x4,<br>w/washer |               | 4    |
| 2-13x                        | UM477358  | Cassette Insert Name Plate             | CG-1098       | 1    |
| <b>MECH. FRAME BLOCK</b>     |           |  |               |      |
| 2-14                         | UM542160  | Connecting Plate                       | CZ-1006       | 1    |
| 2-15                         | ZW559113  | Screw, binding head 2.6x6,<br>w/washer |               | 6    |
| 2-16                         | UM542171  | Cassette Base Holder (Right),<br>w/pin | CZ-1007       | 1    |
| 2-17                         | UM542182  | Cassette Base Holder (Left),<br>w/pin  | CZ-1008       | 1    |
| 2-18                         | ZG542215  | Spring B                               | CZ-1011       | 2    |
| 2-19                         | UM542428  | Sub Chassis, w/pin                     | CZ-1001       | 1    |
| 2-20                         | UM542226  | Rec. Lever A                           | CZ-1012       | 1    |
| 2-21                         | UM542237  | Rec. Lever B                           | CZ-1013       | 1    |
| 2-22                         | ZW290283  | 'U' Ring 2.85M                         | 6-1-1         | 4    |
| 2-23                         | ZG542250  | Spring C                               | CZ-1015       | 1    |
| 2-24                         | UM542248  | Mute Lever                             | CZ-1014       | 1    |
| 2-25                         | ZG546377  | Spring D                               | CZ-1025       | 1    |
| 2-26                         | ES491962  | Leaf SW. 2SB-2B-14                     | 25-10-13      | 1    |
| 2-27                         | ZS447772  | Tapping Screw #2 3x6 (BR)              |               | 17   |
| 2-28                         | ES555750  | Leaf SW. BSW-1F                        | 25-10-16      | 1    |
| 2-29                         | ZS447840  | Tapping Screw #2 3x8 (BR)              |               | 1    |
| 2-30                         | UM542261  | P.C. Board Angle E                     | CZ-1016       | 1    |
| 2-31                         | UM542272  | P.C. Board Angle F                     | CZ-1017       | 1    |
| 2-32                         | UM542351  | P.C. Board Angle G                     | CZ-1023       | 1    |
| 2-33x                        | ZW273802  | Toothed Lock Washer M3                 |               | 1    |



FIG. 3 PHOTO OF PRE-AMP. P.C. BOARD (CZ-5021) BLOCK

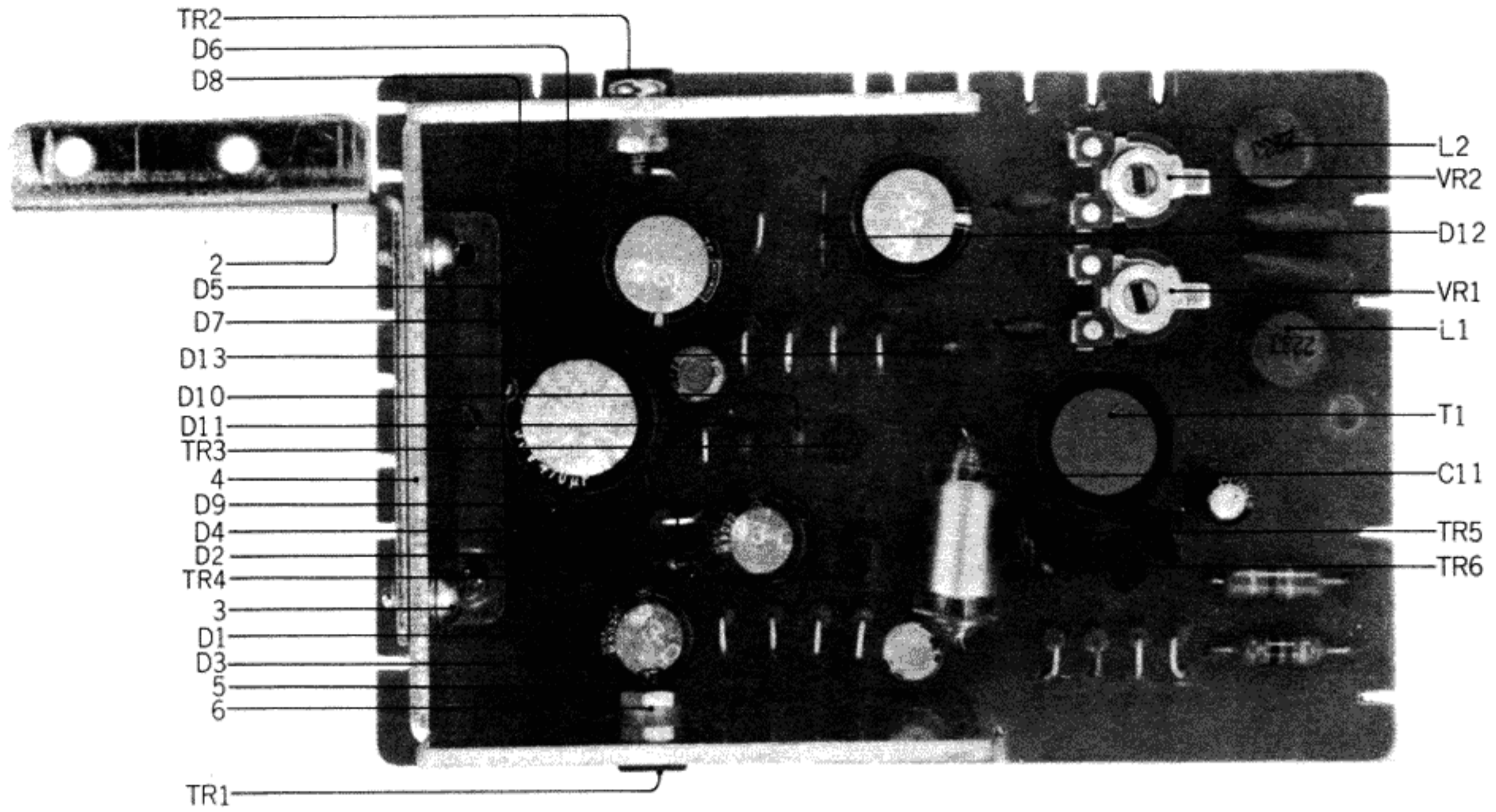




## PRE-AMP. P.C. BOARD (CZ-5021) BLOCK

| Symbol No. | Parts No. | Description                                 | Q'ty | Symbol No. | Parts No. | Description          | Q'ty |
|------------|-----------|---|------|------------|-----------|----------------------|------|
| 3-1x       | BA559967  | Pre-amp. P.C. Board Comp.<br>(CZ-5021)      | 1    | 3-R30      | ER306360  | Carbon RD1/4 6.8k(J) | 2    |
| 3-2x       | BA559956  | Pre-amp. P.C. Board Comp.<br>(CZ-5021) (30) | 1    | 3-R31      | ER350065  | Carbon RD1/4 430(J)  | 2    |
| 3-SW1      | ES555873  | Slide Switch CL-112B                        | 1    | 3-R32      | ER306887  | Carbon RD1/4 15k(J)  | 2    |
| 3-TR1,2,3  | ET517263  | Transistor 2SC1312(G) (H)                   | 6    | 3-R33      | ER211465  | Carbon RD1/4 1k(J)   | 2    |
| 3-TR4,5,6  | ET453486  | Transistor 2SC711(E) (F)                    | 6    | 3-R34      | ER357412  | Carbon RD1/4 220(J)  | 2    |
| 3-D1       | ED219464  | Germanium Diode IN34A                       | 2    | 3-R35      | ER211667  | Carbon RD1/4 100(J)  | 2    |
| 3-L1       | EO368403  | Ferri Inductor FL9H 33MH(J)                 | 2    | 3-R36      | ER346544  | Carbon RD1/4 3k(J)   | 2    |
| 3-L2       | EO420344  | Ferri Inductor FL7H 4.7MH(J)                | 2    |            |           |                      |      |
| 3-VR1      | EV555884  | Semi-fixed/Vol. V8K1-1 30 kB                | 2    |            |           |                      |      |
| 3-VR2      | EV464253  | Semi-fixed/Vol. V8K1-1 2 kB                 | 2    |            |           |                      |      |
| 3-T1       | BT517274  | Headphone Trans. N16-535S                   | 2    |            |           |                      |      |
|            |           | <b>Capacitor, Vertical Type</b>             |      |            |           |                      |      |
| 3-C1       | EC250604  | Mylar 0.001 $\mu$ F(K) 50WV                 | 2    |            |           |                      |      |
| 3-C2       | EC432810  | Elect. 10 $\mu$ F 16WV NL                   | 2    |            |           |                      |      |
| 3-C3       | EC329771  | Elect. 47 $\mu$ F 6.3WV                     | 2    |            |           |                      |      |
| 3-C4       | EC250604  | Mylar 0.001 $\mu$ F(K) 50WV                 | 2    |            |           |                      |      |
| 3-C5       | EC302297  | Mylar 0.018 $\mu$ F(K) 50WV                 | 2    |            |           |                      |      |
| 3-C6       | EC251291  | Mylar 0.1 $\mu$ F(K) 50WV                   | 2    |            |           |                      |      |
| 3-C7       | EC362068  | Mylar 0.0018 $\mu$ F(K) 50WV                | 2    |            |           |                      |      |
| 3-C8       | EC290531  | VFM 100PF(K) 50WV                           | 2    |            |           |                      |      |
| 3-C9       | EC456322  | VFM 22PF(K) 50WV                            | 2    |            |           |                      |      |
| 3-C10      | EC220432  | Elect. 2.2 $\mu$ F 25WV                     | 2    |            |           |                      |      |
| 3-C11      | EC320051  | Elect. 10 $\mu$ F 16WV                      | 2    |            |           |                      |      |
| 3-C12      | EC220127  | Elect. 100 $\mu$ F 16WV                     | 2    |            |           |                      |      |
| 3-C13      | EC539842  | VFM 200PF(K) 50WV                           | 2    |            |           |                      |      |
| 3-C14      | EC320051  | Elect. 10 $\mu$ F 16WV                      | 2    |            |           |                      |      |
| 3-C15      | EC329771  | Elect. 47 $\mu$ F 6.3WV                     | 2    |            |           |                      |      |
| 3-C16      | EC350638  | VFM 180PF(J) 50WV                           | 2    |            |           |                      |      |
| 3-C17      | EC320051  | Elect. 10 $\mu$ F 16WV                      | 2    |            |           |                      |      |
| 3-C18      | EC336104  | Elect. 100 $\mu$ F 6.3WV                    | 2    |            |           |                      |      |
| 3-C19, 20  | EC320051  | Elect. 10 $\mu$ F 16WV                      | 4    |            |           |                      |      |
| 3-C21      | EC336126  | Elect. 47 $\mu$ F 25WV                      | 2    |            |           |                      |      |
| 3-C22      | EC320051  | Elect. 10 $\mu$ F 16WV                      | 2    |            |           |                      |      |
| 3-C23      | EC450527  | Elect. 4.7 $\mu$ F 25WV                     | 2    |            |           |                      |      |
| 3-C24      | EC290531  | VFM 100PF(K) 50WV                           | 2    |            |           |                      |      |
| 3-C25      | EC450055  | Elect. 1 $\mu$ F 25WV                       | 2    |            |           |                      |      |
| 3-C26      | EC320051  | Elect. 10 $\mu$ F 16WV                      | 2    |            |           |                      |      |
| 3-C27      | EC368335  | Mylar 0.022 $\mu$ F(J) 50WV                 | 2    |            |           |                      |      |
| 3-C28      | EC380621  | Mylar 0.0068 $\mu$ F(J) 50WV                | 2    |            |           |                      |      |
|            |           | <b>Resistor, Stopper Type</b>               |      |            |           |                      |      |
| 3-R1       | ER212883  | Carbon RD1/4 4.7k(J)                        | 2    |            |           |                      |      |
| 3-R2       | ER211757  | Carbon RD1/4 100k(J)                        | 2    |            |           |                      |      |
| 3-R3       | ER212883  | Carbon RD1/4 4.7k(J) (Right)                | 1    |            |           |                      |      |
| 3-R3       | ER214290  | Carbon RD1/4 4.7k(J)<br>(Insu. type) (Left) | 1    |            |           |                      |      |
| 3-R4       | ER212681  | Carbon RD1/4 330(J)                         | 2    |            |           |                      |      |
| 3-R5       | ER361980  | Carbon RD1/4 620(J)                         | 2    |            |           |                      |      |
| 3-R6       | ER465276  | Carbon RD1/4 270k(J)NL                      | 2    |            |           |                      |      |
| 3-R7       | ER336442  | Carbon RD1/4 10k(J)                         | 2    |            |           |                      |      |
| 3-R8       | ER357570  | Carbon RD1/4 150k(J)                        | 2    |            |           |                      |      |
| 3-R9       | ER391961  | Carbon RD1/4 91k(J)                         | 2    |            |           |                      |      |
| 3-R10      | ER324224  | Carbon RD1/4 5.1k(J)                        | 2    |            |           |                      |      |
| 3-R11      | ER212264  | Carbon RD1/4 22k(J)                         | 2    |            |           |                      |      |
| 3-R12      | ER212883  | Carbon RD1/4 4.7k(J)                        | 2    |            |           |                      |      |
| 3-R13      | ER343078  | Carbon RD1/4 2.7k(J)                        | 2    |            |           |                      |      |
| 3-R14      | ER380755  | Carbon RD1/4 6.2k(J)                        | 2    |            |           |                      |      |
| 3-R15      | ER212264  | Carbon RD1/4 22k(J)                         | 2    |            |           |                      |      |
| 3-R16      | ER336442  | Carbon RD1/4 10k(J)                         | 2    |            |           |                      |      |
| 3-R17      | ER357491  | Carbon RD1/4 82k(J)                         | 2    |            |           |                      |      |
| 3-R18      | ER347073  | Carbon RD1/4 200(J)                         | 2    |            |           |                      |      |
| 3-R19      | ER306887  | Carbon RD1/4 15k(J)                         | 2    |            |           |                      |      |
| 3-R20      | ER211757  | Carbon RD1/4 100k(J)                        | 2    |            |           |                      |      |
| 3-R21      | ER362441  | Carbon RD1/4 1.8k(J)                        | 2    |            |           |                      |      |
| 3-R22      | ER213300  | Carbon RD1/4 680(J)                         | 2    |            |           |                      |      |
| 3-R23      | ER306887  | Carbon RD1/4 15k(J)                         | 2    |            |           |                      |      |
| 3-R24      | ER211667  | Carbon RD1/4 100(J)                         | 2    |            |           |                      |      |
| 3-R25      | ER420322  | Carbon RD1/4 36k(J)                         | 2    |            |           |                      |      |
| 3-R26      | ER211757  | Carbon RD1/4 100k(J)                        | 2    |            |           |                      |      |
| 3-R27      | ER212883  | Carbon RD1/4 4.7k(J)                        | 2    |            |           |                      |      |
| 3-R28      | ER336442  | Carbon RD1/4 10k(J)                         | 2    |            |           |                      |      |
| 3-R29      | ER211757  | Carbon RD1/4 100k(J)                        | 2    |            |           |                      |      |

FIG. 4 PHOTO OF OSC., POWER SUPPLY P.C. BOARD (CZ-5020) BLOCK



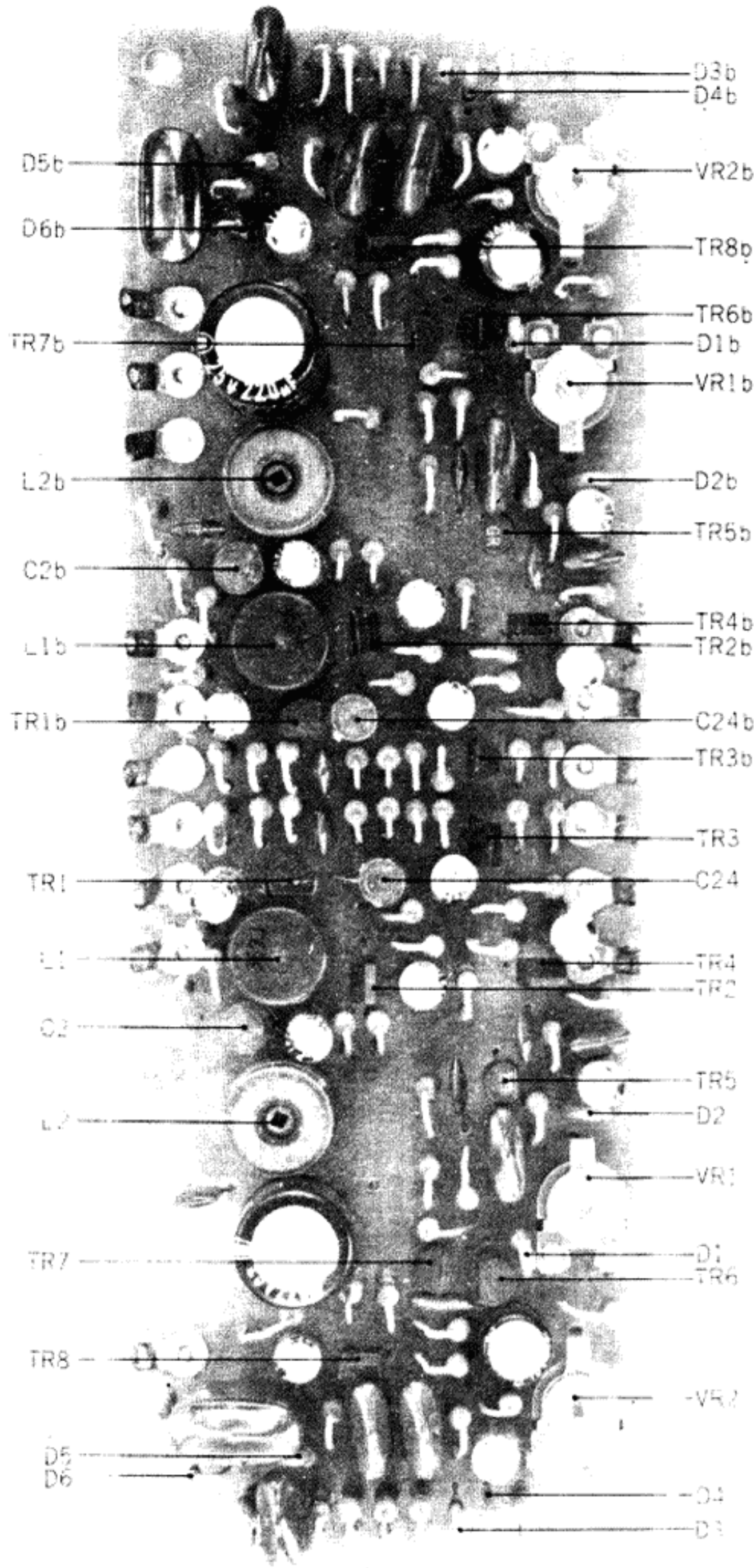
**OSC., POWER SUPPLY P.C. BOARD  
(CZ-5020) BLOCK**

| Symbol No. | Parts No. | Description                                      | Q'ty | Symbol No.                      | Parts No. | Description                           | Q'ty |
|------------|-----------|--|------|---------------------------------|-----------|---------------------------------------|------|
| 4-1x       | BA559978  | OSC., Power Supply P.C. Board<br>Comp. (CZ-5020) | 1    | <b>Capacitor, Vertical Type</b> |           |                                       |      |
| 4-TR1, 2   | ET517375  | Transistor 2SD360(D) (E)                         | 2    | 4-C1                            | EC444082  | Elect. 470 $\mu$ F 35WV               | 1    |
| 4-TR3 to 6 | ET453486  | Transistor 2SC711(E) (F)                         | 4    | 4-C2                            | EC220151  | Elect. 100 $\mu$ F 25WV               | 1    |
| 4-D1 to 8  | ED511097  | Silicon Diode IN4001                             | 8    | 4-C3                            | EC220994  | Elect. 10 $\mu$ F 25WV                | 1    |
| 4-D9       | ED498150  | Zener Diode WZ-192                               | 1    | 4-C4                            | EC220151  | Elect. 100 $\mu$ F 25WV               | 1    |
| 4-D10, 11  | ED514721  | Silicon Diode WG-599                             | 2    | 4-C5                            | EC329771  | Elect. 47 $\mu$ F 6.3WV               | 1    |
| 4-D12      | ED555895  | Zener Diode WZ-065                               | 1    | 4-C6                            | EC339096  | Elect. 470 $\mu$ F 16WV               | 1    |
| 4-D13      | ED514721  | Silicon Diode WG-599                             | 1    | 4-C7                            | EC220768  | Elect. 470 $\mu$ F 10WV               | 1    |
| 4-L1, 2    | EO244012  | Ferri Inductor FL9H 22MH(J)                      | 2    | 4-C8                            | EC220432  | Elect. 2.2 $\mu$ F 25WV               | 1    |
| 4-T1       | EO496844  | OSC. Coil OT-903                                 | 1    | 4-C9, 10                        | EC250841  | Mylar 0.01 $\mu$ F(J) 50WV            | 2    |
| 4-VR1, 2   | EV499882  | Semi-fixed/Vol. V10K8-4-2 300k $\Omega$          | 2    | 4-C11                           | EC552892  | Styrol 3000PF(J) 125WV<br>(Tub. type) | 1    |
| 4-2        | UM542046  | Heat-sink Angle                                  | 1    | 4-C12, 13                       | EC357827  | VFM 50PF(K) 50WV                      | 2    |
| 4-3        | ZS447772  | Tapping Screw #2 3x6 (BR)                        | 4    | 4-C14, 15                       | EC336194  | VFM 270PF(J) 50WV                     | 2    |
| 4-4        | EZ542024  | Heat-sink A                                      | 1    | <b>Resistor, Stopper Type</b>   |           |                                       |      |
| 4-5        | ZS413741  | Screw, binding head 3x8                          | 2    | 4-R1                            | ER343078  | Carbon RD1/2 2.7k(J)                  | 1    |
| 4-6        | ZW273756  | Nut M3   | 2    | 4-R2                            | ER357412  | Carbon RD1/4 220(J)                   | 1    |
| 4-7x       | ZW273802  | Toothed Lock Washer M3                           | 1    | 4-R3                            | ER306887  | Carbon RD1/4 15k(J)                   | 1    |
|            |           |  |      | 4-R4                            | ER336442  | Carbon RD1/4 10k(J)                   | 1    |
|            |           |  |      | 4-R5                            | ER211465  | Carbon RD1/4 1k(J)                    | 1    |
|            |           |  |      | 4-R6                            | ER212264  | Carbon RD1/4 22k(J)                   | 1    |
|            |           |  |      | 4-R7                            | ER346994  | Carbon RD1/4 18k(J)                   | 1    |
|            |           |  |      | 4-R8                            | ER212883  | Carbon RD1/4 4.7k(J)                  | 1    |
|            |           |  |      | 4-R9                            | ER304290  | Carbon RD1/4 10(J)                    | 1    |
|            |           |  |      | 4-R10                           | ER357456  | Carbon RD1/4 2.2k(J)                  | 1    |
|            |           |  |      | 4-R11                           | ER347038  | Carbon RD1/4 270(J)                   | 1    |
|            |           |  |      | 4-R12                           | ER430108  | Carbon RD1/4 910(J)                   | 1    |
|            |           |  |      | 4-R13                           | ER552936  | Carbon RD1/2 200(J) (Insu. type)      | 1    |
|            |           |  |      | 4-R14                           | ER552925  | Carbon RD1/2 240(J) (Insu. type)      | 1    |
|            |           |  |      | 4-R15                           | ER212883  | Carbon RD1/4 4.7k(J)                  | 1    |
|            |           |  |      | 4-R16, 17                       | ER304290  | Carbon RD1/4 10(J)                    | 2    |
|            |           |  |      | 4-R18                           | ER304402  | Carbon RD1/4 470(J)                   | 1    |

When ordering parts, please describe Parts Number, Serial Number, and Model Number in detail.



FIG. 5 PHOTO OF DOLBY P.C. BOARD (CG-5202) BLOCK



| Symbol No. | Parts No. | Description                    | Q'ty |
|------------|-----------|--------------------------------|------|
| 5-VR1      | EV499364  | Semi-fixed/Vol. V10k8-4-2 5 kB | 2    |
| 5-VR2      | EV499375  | Semi-fixed/Vol. V10k8-4-2 500B | 2    |
| 5-L1       | EO496350  | Inductor 146LY 36MH(J)         | 2    |
| 5-L2       | EO496361  | Inductor 6070GE 23MH(J)        | 2    |
| 5-TP1, 4   | EJ350447  | Test Terminal                  | 2    |

**Capacitor, Vertical Type**

|          |          |                        |   |
|----------|----------|------------------------|---|
| 5-C1     | EC320051 | Elect. 10μF 16WV       | 2 |
| 5-C2     | EC495865 | Styrol 3000PF(J) 50WV  | 2 |
| 5-C3     | EC379787 | Mylar 0.0039μF(J) 50WV | 2 |
| 5-C4     | EC320051 | Elect. 10μF 16WV       | 2 |
| 5-C5     | EC250683 | Mylar 0.0022μF(J) 50WV | 2 |
| 5-C6,7,8 | EC320051 | Elect. 10μF 16WV       | 6 |
| 5-C9, 10 | EC313121 | Elect. 220μF 25WV      | 4 |
| 5-C11    | EC329883 | Mylar 0.0056μF(J) 50WV | 2 |
| 5-C12    | EC337500 | Mylar 0.0047μF(J) 50WV | 2 |
| 5-C13    | EC329861 | Mylar 0.027μF(J) 50WV  | 2 |
| 5-C14    | EC320051 | Elect. 10μF 16WV       | 2 |
| 5-C15    | EC251291 | Mylar 0.1μF(K) 50WV    | 2 |
| 5-C16    | EC320040 | Elect. 47μF 16WV       | 2 |
| 5-C17    | EC320051 | Elect. 10μF 16WV       | 2 |
| 5-C18    | EC251291 | Mylar 0.1μF(K) 50WV    | 2 |
| 5-C19    | EC320051 | Elect. 10μF 16WV       | 2 |
| 5-C20    | EC379170 | Mylar 0.1μF(J) 50WV    | 2 |
| 5-C21    | EC251291 | Mylar 0.1μF(K) 50WV    | 2 |
| 5-C22    | EC395504 | Mylar 0.33μF(K) 50WV   | 2 |
| 5-C23    | EC290520 | VFM 100PF(J) 50WV      | 2 |
| 5-C24    | EC434070 | Styrol 680PF(J) 50WV   | 2 |

**Resistor, Stopper Type**

|           |          |                      |   |
|-----------|----------|----------------------|---|
| 5-R1      | ER336442 | Carbon RD1/4 10k(J)  | 2 |
| 5-R2      | ER212477 | Carbon RD1/4 3.3k(J) | 2 |
| 5-R3      | ER426857 | Carbon RD1/4 270k(J) | 2 |
| 5-R4      | ER346601 | Carbon RD1/4 47k(J)  | 2 |
| 5-R5      | ER212477 | Carbon RD1/4 3.3k(J) | 2 |
| 5-R6      | ER304402 | Carbon RD1/4 470(J)  | 2 |
| 5-R7      | ER211858 | Carbon RD1/4 12k(J)  | 2 |
| 5-R8      | ER211667 | Carbon RD1/4 100(J)  | 2 |
| 5-R9      | ER211858 | Carbon RD1/4 12k(J)  | 2 |
| 5-R10     | ER343078 | Carbon RD1/4 2.7k(J) | 2 |
| 5-R11     | ER349907 | Carbon RD1/4 33k(J)  | 2 |
| 5-R12     | ER357570 | Carbon RD1/4 150k(J) | 2 |
| 5-R13     | ER212174 | Carbon RD1/4 180k(J) | 2 |
| 5-R14, 15 | ER212264 | Carbon RD1/4 22k(J)  | 4 |
| 5-R16     | ER357570 | Carbon RD1/4 150k(J) | 2 |
| 5-R17     | ER349942 | Carbon RD1/4 8.2k(J) | 2 |
| 5-R18     | ER343078 | Carbon RD1/4 2.7k(J) | 2 |
| 5-R19     | ER349907 | Carbon RD1/4 33k(J)  | 2 |
| 5-R20, 21 | ER213467 | Carbon RD1/4 820(J)  | 4 |
| 5-R22     | ER349907 | Carbon RD1/4 33k(J)  | 2 |
| 5-R23     | ER357535 | Carbon RD1/4 39k(J)  | 2 |
| 5-R24     | ER212477 | Carbon RD1/4 3.3k(J) | 2 |
| 5-R25     | ER357456 | Carbon RD1/4 2.2k(J) | 2 |
| 5-R26     | ER349942 | Carbon RD1/4 8.2k(J) | 2 |
| 5-R27     | ER306843 | Carbon RD1/4 1.2k(J) | 2 |
| 5-R28     | ER430097 | Carbon RD1/4 680k(J) | 2 |
| 5-R29     | ER306887 | Carbon RD1/4 15k(J)  | 2 |
| 5-R30     | ER349942 | Carbon RD1/4 8.2k(J) | 2 |
| 5-R31     | ER336442 | Carbon RD1/4 10k(J)  | 2 |
| 5-R32, 33 | ER349942 | Carbon RD1/4 8.2k(J) | 4 |
| 5-R34     | ER349907 | Carbon RD1/4 33k(J)  | 2 |
| 5-R35     | ER450011 | Carbon RD1/4 120k(J) | 2 |
| 5-R36     | ER346601 | Carbon RD1/4 47k(J)  | 2 |
| 5-R37     | ER343078 | Carbon RD1/4 2.7k(J) | 2 |
| 5-R38     | ER211465 | Carbon RD1/4 1k(J)   | 2 |
| 5-R39     | ER380913 | Carbon RD1/4 33(J)   | 2 |
| 5-R40     | ER361642 | Carbon RD1/4 47(J)   | 2 |
| 5-R41     | ER306887 | Carbon RD1/4 15k(J)  | 2 |
| 5-R42, 43 | ER426857 | Carbon RD1/4 270k(J) | 4 |
| 5-R44     | ER380711 | Carbon RD1/4 220k(J) | 2 |
| 5-R45     | ER212883 | Carbon RD1/4 4.7k(J) | 2 |

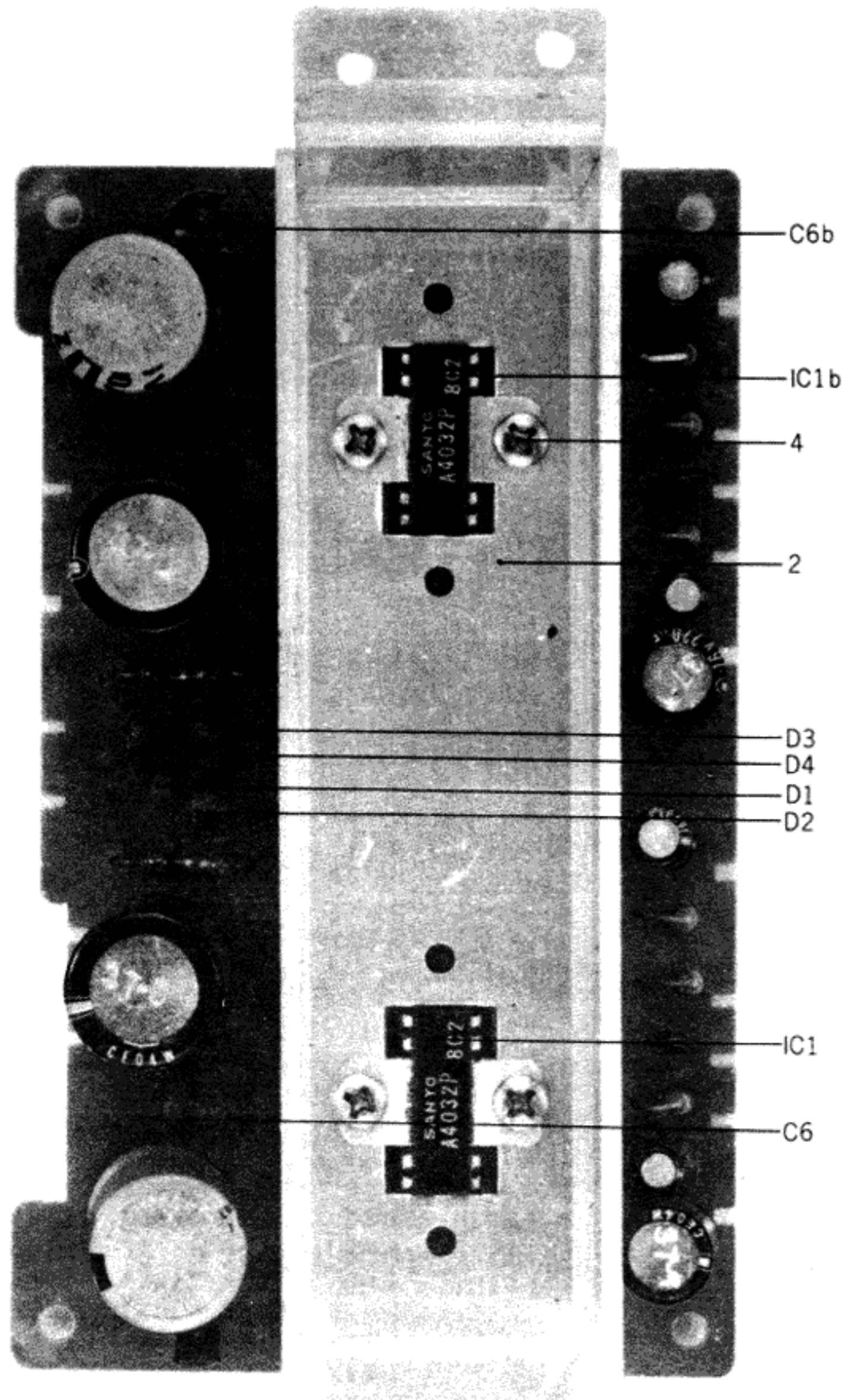
**DOLBY P.C. BOARD (CG-5202) BLOCK**

| Symbol No. | Parts No. | Description                         | Q'ty |
|------------|-----------|-------------------------------------|------|
| 5-1x       | BA498767  | Dolby P.C. Board Comp.<br>(CG-5202) | 1    |
| 5-TR1      | ET234854  | Transistor 2SC458LG(C)              | 2    |
| 5-TR2      | ET329218  | Transistor 2SC458(C)                | 2    |
| 5-TR3      | ET352146  | Transistor 2SC458LG(D)              | 2    |
| 5-TR4      | ET329218  | Transistor 2SC458(C)                | 2    |
| 5-TR5      | ET491051  | FET 2SK30A(GR)                      | 2    |
| 5-TR6      | ET234854  | Transistor 2SC458LG(C)              | 2    |
| 5-TR7      | ET350335  | Transistor 2SA564(Q)                | 2    |
| 5-TR8      | ET329218  | Transistor 2SC458(C)                | 2    |
| 5-D1       | ED219464  | Germanium Diode 1N34A               | 2    |
| 5-D2       | ED491130  | Zener Diode WZ-085                  | 2    |
| 5-D3, 4    | ED514721  | Silicon Diode WG-599                | 4    |
| 5-D5       | ED219464  | Germanium Diode 1N34A               | 2    |
| 5-D6       | ED514721  | Silicon Diode WG-599                | 2    |

When ordering parts, please describe Parts Number, Serial Number, and Model Number in detail.



FIG. 6 PHOTO OF MAIN AMP. P.C. BOARD (CG-5403) BLOCK

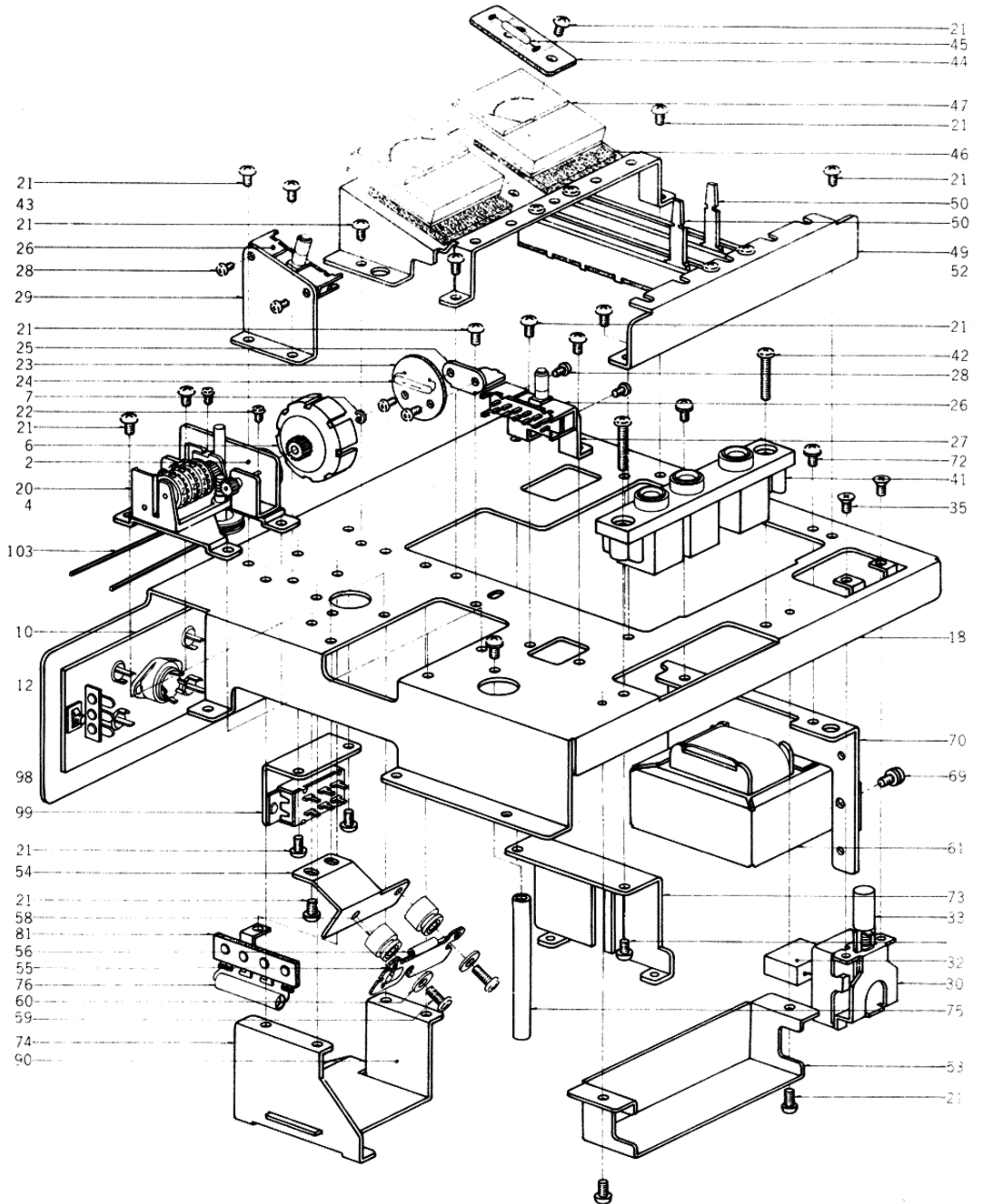


MAIN AMP. P.C. BOARD (CG-5403) BLOCK

| Symbol No. | Parts No. | Description                          | Q'ty | Symbol No.                      | Parts No. | Description                      | Q'ty |
|------------|-----------|--------------------------------------|------|---------------------------------|-----------|----------------------------------|------|
| 6-1x       | BA559980  | Main Amp. P.C. Board Comp. (CG-5403) | 1    | <b>Capacitor, Vertical Type</b> |           |                                  |      |
| 6-IC1      | EI517342  | I.C. Power Amp. LA-4032P             | 2    | 6-C1                            | EC320051  | Elect. 10 $\mu$ F 16WV           | 2    |
| 6-D1 to 4  | ED511097  | Silicon Diode IN4001                 | 4    | 6-C2                            | EC450066  | Elect. 33 $\mu$ F 16WV           | 2    |
| 6-2        | EZ542035  | Heat-sink B                          | 1    | 6-C3                            | EC321208  | Elect. 220 $\mu$ F 16WV          | 2    |
| 6-3x       | UM518668  | I.C. Retaining Metal                 | 1    | 6-C4                            | EC250661  | Mylar 0.0015 $\mu$ F(K) 50WV     | 2    |
| 6-4        | ZS417194  | Screw, binding head 3x10             | 4    | 6-C5                            | EC362158  | Mylar 0.0047 $\mu$ F(K) 50WV     | 2    |
| 6-5x       | ZW273756  | Nut M3                               | 4    | 6-C6                            | EC515834  | Styrol 560PF(K) 50WV             | 2    |
|            |           |                                      |      | 6-C7                            | EC450270  | Elect. 1000 $\mu$ F 25WV         | 2    |
|            |           |                                      |      | 6-C8                            | EC336148  | Elect. 1000 $\mu$ F 16WV         | 2    |
|            |           |                                      |      | 6-C9                            | EC250885  | Mylar 0.01 $\mu$ F(K) 50WV       | 2    |
|            |           |                                      |      | <b>Resistor, Stopper Type</b>   |           |                                  |      |
|            |           |                                      |      | 6-R1                            | ER212681  | Carbon RD1/4 330(J) (Insu. type) | 2    |
|            |           |                                      |      | 6-R2                            | ER517320  | Carbon RD1/4 0.5(J) (Insu. type) | 2    |
|            |           |                                      |      | 6-R3                            | ER336442  | Carbon RD1/4 10k(J)              | 2    |
|            |           |                                      |      | 6-R4                            | ER306887  | Carbon RD1/4 15k(J)              | 2    |

When ordering parts, please describe Parts Number, Serial Number, and Model Number in detail.

FIG. 7 ILLUSTRATION OF AMP. ASSEMBLY BLOCK





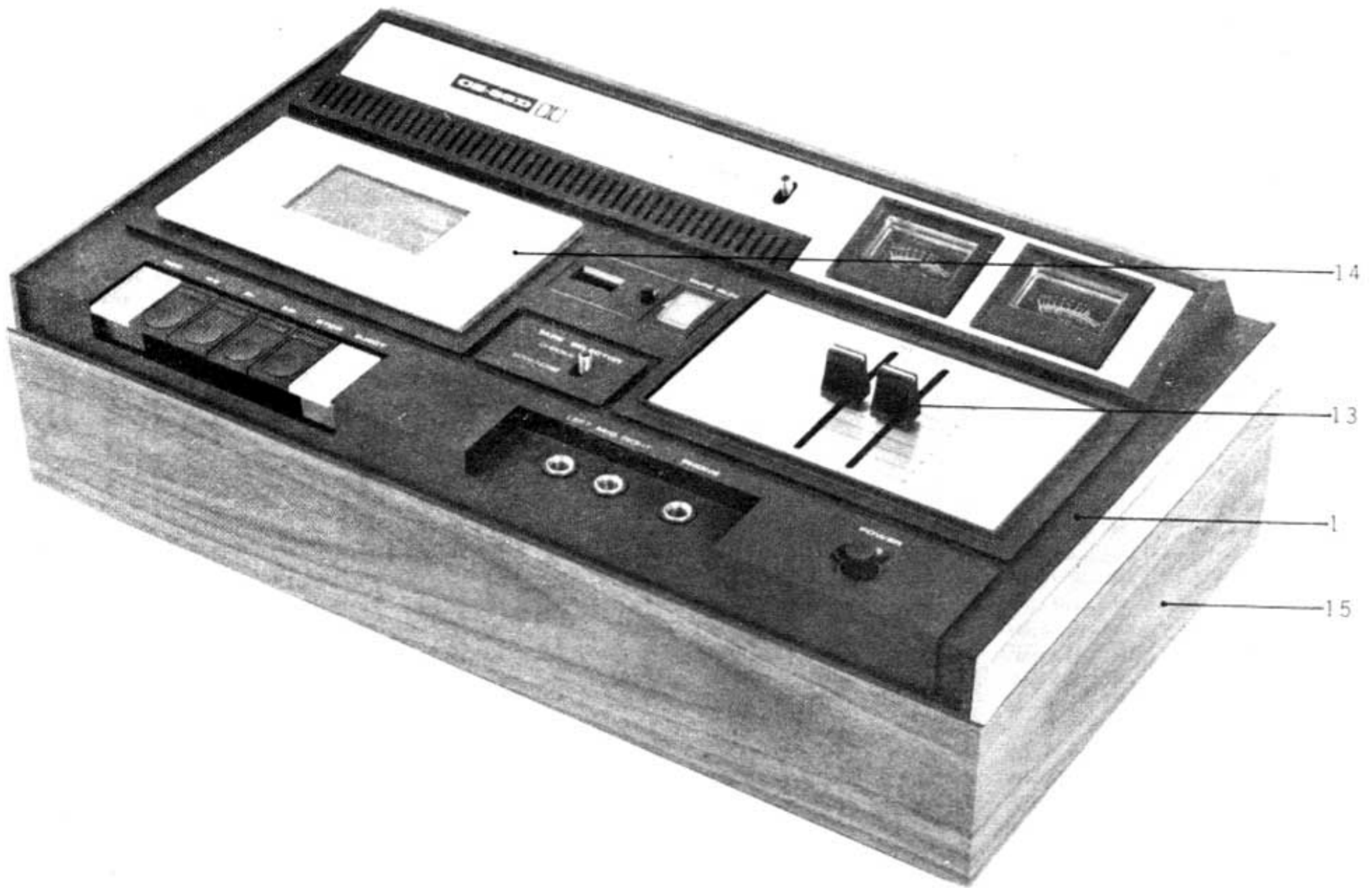
## AMP. ASSEMBLY BLOCK

| Ref. No.                  | Parts No. | Description                              | Schematic No. | Qty | Ref. No. | Parts No. | Description                                | Schematic No. | Qty |
|---------------------------|-----------|--|---------------|-----|----------|-----------|--|---------------|-----|
| <b>TAPE RUN BLOCK</b>     |           |  |               |     |          |           |  |               |     |
| 7-1x                      | BZ559923  | Tape Run Block Comp.                     | CZ-1.2        | 1   | 7-62x    | BT559225  | Power Trans. CZT-12 (UL)                   | 38-4-241      | 1   |
| 7-2                       | UM541811  | Pinion Base                              | CZ-2010       | 1   | 7-63x    | BT559236  | Power Trans. CZT-13<br>(CSA, JPN)          | 38-4-238      | 1   |
| 7-3x                      | UM541855  | Pinion Shaft                             | CZ-2014       | 1   | 7-64x    | BT559247  | Power Trans. CZT-14 (EC)                   | 38-4-239      | 1   |
| 7-4                       | UM541833  | Pinion A                                 | CZ-2012       | 1   | 7-65x    | BT559271  | Power Trans. CZT-16 (240V)                 | 38-4-244      | 1   |
| 7-5x                      | UM541844  | Pinion B                                 | CZ-2013       | 1   | 7-66x    | BT559157  | Power Trans. CZT-11 (30)                   | 38-4-243      | 1   |
| 7-6                       | UM541866  | Tape Run Drum                            | CZ-2015       | 1   | 7-67x    | BT559214  | Power Trans. CZT-15 (30-UL)                | 38-4-240      | 1   |
| 7-7                       | ZW270088  | 'E' Ring 1.9M                            | 6-1-9         | 1   | 7-68x    | BT559282  | Power Trans. CZT-17<br>(30-240V)           | 38-4-245      | 1   |
| <b>JACK PLATE BLOCK</b>   |           |  |               |     |          |           |  |               |     |
| 7-8x                      | BZ559945  | Jack Plate Block Comp.                   |               | 1   | 7-69     | ZS413223  | Screw, binding head 3x5,<br>w/washer       |               | 2   |
| 7-9x                      | BZ559934  | Jack Plate Block Comp. (30)              |               | 1   | 7-70     | UM547165  | Trans. Base B                              | CZ-5038       | 1   |
| 7-10                      | EJ555851  | Jack Plate A                             | 31-5-80       | 1   | 7-71x    | UM547176  | Trans. Base A (EC, 30)                     | CZ-5037       | 1   |
| 7-11x                     | EJ555862  | Jack Plate B (30)                        | 31-5-81       | 1   | 7-72     | ZS417025  | Screw, binding head 3x8,<br>w/washer       |               | 4   |
| 7-12                      | EJ558246  | Din Jack 5P                              | 31-1-99       | 1   | 7-73     | EZ541956  | P.C. Board Angle A                         | CZ-5008       | 1   |
| 7-13x                     | EJ420074  | Mic. Jack 2PMJ1P                         | 31-2-27       | 2   | 7-74     | EZ541967  | P.C. Board Angle B                         | CZ-5009       | 1   |
| 7-14x                     | ZW554624  | E Jack Nut                               | 7-1-56        | 2   | 7-75     | UM541978  | P.C. Board Prop                            | CZ-5012       | 1   |
| 7-15x                     | ER345712  | Carbon/R. RD1/4 22k(J)<br>(Insu. type)   | 35-9-5        | 4   | 7-76     | EF559168  | Fuse 0.3A 250V, w/lead                     | 39-1-49       | 1   |
| 7-16x                     | ER430233  | Carbon/R. RD1/4 390k(J).<br>(Insu. type) | 35-9-5        | 2   | 7-77x    | EF495718  | Fuse 0.5A 125V (CSA,JPN)                   | 39-1-44       | 2   |
| 7-17x                     | ER315213  | Carbon/R. RD1/4 8.2k(J)<br>(Insu. type)  | 35-9-5        | 4   | 7-78x    | EF238634  | Fuse 400MAT (T type) (EC)                  |               | 3   |
|                           |           |  |               |     | 7-79x    | EF562498  | Fuse 0.5A 250V (30)                        | 39-1-49       | 1   |
|                           |           |  |               |     | 7-80x    | EF516881  | Fuse ST-4 0.3A (30-UL)                     | 39-1-28       | 1   |
|                           |           |  |               |     | 7-81     | EJ255003  | Lug Plate KP1L2                            | 33-3-5        | 1   |
|                           |           |  |               |     | 7-82x    | EJ255036  | Lug Plate KP2L2 (UL)                       | 33-3-6        | 1   |
|                           |           |  |               |     | 7-83x    | EZ480925  | Fuse Terminal Plate 3<br>(CSA, JPN)        | 101061        | 1   |
|                           |           |  |               |     | 7-84x    | EJ561227  | Terminal No.500/2 (EC)                     | 52-1-18       | 1   |
|                           |           |  |               |     | 7-85x    | MZ546625  | Connector Insulator Paper                  | ND-1081       | 1   |
|                           |           |  |               |     | 7-86x    | ZS565953  | Tapping Screw #2 3x15                      |               | 1   |
|                           |           |  |               |     | 7-87x    | EZ545444  | EC Fuse Holder A                           | A0392         | 1   |
|                           |           |  |               |     | 7-88x    | EA515204  | Fuse P.C. Board KD (30-UL)                 | KD-A2020      | 1   |
|                           |           |  |               |     | 7-89x    | EJ514822  | Fuse Holder, P.C. Board<br>S-N5051 (30-UL) | 10-1-28       | 2   |
|                           |           |  |               |     | 7-90     | EZ546546  | Shield Plate                               | CZ-5037       | 1   |
|                           |           |  |               |     | 7-91x    | ZW273756  | Nut M3                                     |               | 2   |
|                           |           |  |               |     | 7-92x    | EZ382263  | Strain Relief SR-4K-4                      | 2-7-12        | 1   |
|                           |           |  |               |     | 7-93x    | EZ246936  | Strain Relief SR-6W-1(3 core)              | 1-7-7         | 1   |
|                           |           |  |               |     | 7-94x    | EW540112  | AC Cord (CUL) 2.5M                         | 2-1-19        | 1   |
|                           |           |  |               |     | 7-95x    | EW559260  | Power Cord type-412 (EC)                   | 26-1-12       | 1   |
|                           |           |  |               |     | 7-96x    | EW524845  | AC Cord 2.5M (JPN)                         | 2-1-11        | 1   |
|                           |           |  |               |     | 7-97x    | EW315448  | Australia Cord (3 core)                    | 2-1-11        | 1   |
|                           |           |  |               |     | 7-98     | UM546063  | Switch Angle C                             | CZ-5034       | 1   |
|                           |           |  |               |     | 7-99     | ES317531  | Slide SW. FSD-271DU                        | 2-1-21        | 1   |
|                           |           |  |               |     | 7-100x   | EA549448  | Fuse P.C. Board (30-UL)                    | 39-1-28       | 1   |
|                           |           |  |               |     | 7-101x   | AA544768  | Fuse Angle (30-UL)                         | 39-1-28       | 1   |
|                           |           |  |               |     | 7-102x   | EF277424  | Fuse ST-4 0.8A (30-UL)                     | 39-1-28       | 2   |
|                           |           |  |               |     | 7-103    | MB542283  | Counter Belt                               | CZ-5011       | 1   |
| <b>AMP. CHASSIS BLOCK</b> |           |  |               |     |          |           |  |               |     |
| 7-18                      | EZ542081  | Amp. Chassis                             | CZ-5001       | 1   |          |           |  |               |     |
| 7-19x                     | EZ578992  | Amp. Chassis B (EC)                      | CZ-5001       | 1   |          |           |  |               |     |
| 7-20                      | MC555772  | Counter Comp. MP-390-98S                 | 9-1-30        | 1   |          |           |  |               |     |
| 7-21                      | ZS447772  | Tapping Screw #2 3x6 (BR)                |               | 35  |          |           |  |               |     |
| 7-22                      | ZS417251  | Screw, binding head 2.3x3                |               | 4   |          |           |  |               |     |
| 7-23                      | EA541888  | Lamp P.C. Board Comp.                    | CZ-2017       | 1   |          |           |  |               |     |
| 7-24                      | EL295312  | Lamp (No.2) 8V 0.2A                      | 28-2-8        | 1   |          |           |  |               |     |
| 7-25                      | UM541877  | Lamp Angle                               | CZ-2016       | 1   |          |           |  |               |     |
| 7-26                      | ES555783  | Slide SW. KS-S-F-04-15                   | 25-3-95       | 2   |          |           |  |               |     |
| 7-27                      | EZ541923  | SW. Angle A                              | CZ-5005       | 1   |          |           |  |               |     |
| 7-28                      | ZS481645  | Screw, binding head 2.6x3                |               | 4   |          |           |  |               |     |
| 7-29                      | UM541934  | SW. Angle B                              | CZ-5006       | 1   |          |           |  |               |     |
| 7-30                      | ES469541  | Push SW. TV-3 JB52                       | 25-5-60       | 1   |          |           |  |               |     |
| 7-31x                     | ES561767  | Push SW. NP-285-2 (EC)                   | 25-5-111      | 1   |          |           |  |               |     |
| 7-32                      | ER376413  | Spark Quencher U/L<br>0.033μ+120Ω 500WV  | 41-1-37       | 1   |          |           |  |               |     |
| 7-33                      | SK495202  | Power Supply Knob                        | CG-6308       | 1   |          |           |  |               |     |
| 7-34x                     | SB545411  | Power Supply Knob (EC)                   | CZ-5023       | 1   |          |           |  |               |     |
| 7-35                      | ZS327835  | ISO Screw, countersunk<br>head 3x5       |               | 2   |          |           |  |               |     |
| 7-36x                     | ZS450832  | ISO Screw, binding head 3x12             |               | 2   |          |           |  |               |     |
| 7-37x                     | UM578834  | SW. Cover Sleeve (EC)                    | CZ-5043       | 2   |          |           |  |               |     |
| 7-38x                     | UM578812  | Power SW. Base (EC)                      | CZ-5041       | 1   |          |           |  |               |     |
| 7-39x                     | UM578823  | Power SW. Cover (EC)                     | CZ-5042       | 1   |          |           |  |               |     |
| 7-40x                     | ZS200676  | Tapping Screw #2 3x6<br>(countersunk)    |               | 2   |          |           |  |               |     |
| 7-41                      | EJ555794  | 3-throw Jack SG-0911                     | 31-2-43       | 1   |          |           |  |               |     |
| 7-42                      | ZS559135  | Tapping Screw #2 4x18 (pan)              |               | 2   |          |           |  |               |     |
| 7-43                      | UM542057  | Meter Base                               | CZ-5003       | 1   |          |           |  |               |     |
| 7-44                      | EZ255317  | Lamp Holder                              | LD-533        | 1   |          |           |  |               |     |
| 7-45                      | EL295312  | Lamp (No.2) 8V 0.2A                      | 28-2-8        | 1   |          |           |  |               |     |
| 7-46                      | UM541912  | Meter Cushion                            | CZ-5004       | 2   |          |           |  |               |     |
| 7-47                      | EM517307  | VU Meter KL-218L-23(Blue)                | 46-1-65       | 2   |          |           |  |               |     |
| 7-48x                     | EM558505  | VU Meter KL-218L-42(Black)               | 46-1-78       | 2   |          |           |  |               |     |
| 7-49                      | EZ541901  | Volume Angle                             | CZ-5002       | 1   |          |           |  |               |     |
| 7-50                      | EV555805  | Slide Vol. LD14A 50 kA                   | 36-16-7       | 2   |          |           |  |               |     |
| 7-51x                     | EV555816  | Slide Vol. MD14A 100 kBx2<br>(30)        | 36-27-3       | 1   |          |           |  |               |     |
| 7-52                      | ZS371856  | ISO Screw, binding head 3x5              |               | 4   |          |           |  |               |     |
| 7-53                      | UM541991  | Shield Cover                             | CZ-5014       | 1   |          |           |  |               |     |
| 7-54                      | EZ541980  | Lead SW. Angle                           | CZ-5013       | 1   |          |           |  |               |     |
| 7-55                      | EA516047  | Lead SW. P.C. Board                      | CG-1229       | 1   |          |           |  |               |     |
| 7-56                      | ES516036  | Lead SW. ORD-225                         | 25-11-1       | 1   |          |           |  |               |     |
| 7-57x                     | EC290564  | VFM/C. 220PF(K) 50WV                     | 24-6-2        | 1   |          |           |  |               |     |
| 7-58                      | UM515518  | SW. Table Cushion, w/sleeve              | CG-1228       | 2   |          |           |  |               |     |
| 7-59                      | ZS462881  | Screw, binding head 2.3x12               |               | 2   |          |           |  |               |     |
| 7-60                      | ZW493582  | Washer (SPC) D2.3x9x0.3t                 |               | 2   |          |           |  |               |     |
| 7-61                      | BT559146  | Power Trans. CZT-10                      | 38-4-242      | 1   |          |           |  |               |     |

When ordering parts, please describe Parts Number, Serial Number, and Model Number in detail.



FIG. 8 PHOTO OF FINAL ASSEMBLY BLOCK



### FINAL ASSEMBLY BLOCK

| Ref. No. | Parts No. | Description                          | Schematic No. | Q'ty |
|----------|-----------|--------------------------------------|---------------|------|
| 8-1      | BC559708  | Upper Case Block Comp.               |               | 1    |
| 8-2x     | BC559697  | Upper Case Block Comp. (30D)         |               | 1    |
| 8-3x     | BC559686  | Upper Case Block Comp. (30)          |               | 1    |
| 8-4x     | BC561385  | Bottom Plate Block Comp.             |               | 1    |
| 8-5x     | BC560002  | Bottom Plate Block Comp. (CSA)       |               | 1    |
| 8-6x     | BC559710  | Bottom Plate Block Comp. (30/30D)    |               | 1    |
| 8-7x     | SA522854  | Rubber Foot LSR-15D                  | PX-3008       | 4    |
| 8-8x     | ZS417148  | Screw, binding head 3x15             |               | 4    |
| 8-9x     | ZW559102  | Speed Nut, F type M3                 | 6-3-5         | 4    |
| 8-10x    | UM542305  | Mask C (switch)                      | CZ-1020       | 2    |
| 8-11x    | ZS417025  | Screw, binding head 3x8, w/washer    |               | 4    |
| 8-12x    | ZS414033  | Screw, countersunk head 3x8          |               | 2    |
| 8-13     | SK566008  | Vol. Knob B                          | CG-6515       | 3    |
| 8-14     | UM546300  | Case Lid Comp. CZ                    | CZ-6033       | 1    |
| 8-15     | BC542575  | Wood Frame                           | CZ-6015       | 1    |
| 8-16x    | ZS462194  | Tapping Screw #2 3x8 (PAN), w/washer |               | 5    |



# INDEX

| Parts No. | Ref. No. & Symbol No. | Parts No. | Ref. No. & Symbol No. | Parts No. | Ref. No. & Symbol No. | Parts No. | Ref. No. & Symbol No. | Parts No. | Ref. No. & Symbol No. |
|-----------|-----------------------|-----------|-----------------------|-----------|-----------------------|-----------|-----------------------|-----------|-----------------------|
| AA544768  | 7-101x                | EC290531  | 3-C8                  | EJ561227  | 7-84x                 | ER349942  | 5-R17                 | MC555772  | 7-20                  |
| BA498767  | 5-1x                  | EC290531  | 3-C24                 | EL295312  | 7-24                  | ER349942  | 5-R26                 | MV269965  | 2-9                   |
| BA559956  | 3-2x                  | EC290564  | 7-57x                 | EL295312  | 7-45                  | ER349942  | 5-R30                 | MZ546625  | 7-85x                 |
| BA559967  | 3-1x                  | EC302297  | 3-C5                  | EM517307  | 7-47                  | ER349942  | 5-R32, 33             | SA522854  | 8-7x                  |
| BA559978  | 4-1x                  | EC313121  | 5-C9, 10              | EM558505  | 7-48x                 | ER350065  | 3-R31                 | SB545411  | 7-34x                 |
| BA559980  | 6-1x                  | EC320040  | 5-C16                 | EO368403  | 3-L1                  | ER357412  | 3-R34                 | SK495202  | 7-33                  |
| BC542575  | 8-15                  | EC320051  | 3-C11                 | EO420344  | 3-L2                  | ER357412  | 4-R2                  | SK566008  | 8-13                  |
| BC559686  | 8-3x                  | EC320051  | 3-C14                 | EO496350  | 5-L1                  | ER357456  | 4-R10                 | UM477358  | 2-13x                 |
| BC559697  | 8-2x                  | EC320051  | 3-C17                 | EO496361  | 5-L2                  | ER357456  | 5-R25                 | UM515518  | 7-58                  |
| BC559708  | 8-1                   | EC320051  | 3-C19, 20             | EO496844  | 4-T1                  | ER357491  | 3-R17                 | UM518668  | 6-3x                  |
| BC559710  | 8-6x                  | EC320051  | 3-C22                 | ER211465  | 3-R33                 | ER357535  | 5-R23                 | UM541473  | 1-31                  |
| BC560002  | 8-5x                  | EC320051  | 3-C26                 | ER211465  | 4-R5                  | ER357570  | 3-R8                  | UM541776  | 2-10                  |
| BC561385  | 8-4x                  | EC320051  | 5-C1                  | ER211465  | 5-R38                 | ER357570  | 5-R12                 | UM541787  | 2-11                  |
| BT517274  | 3-T1                  | EC320051  | 5-C4                  | ER211667  | 3-R24                 | ER357570  | 5-R16                 | UM541798  | 2-7                   |
| BT559157  | 7-66x                 | EC320051  | 5-C6,7,8              | ER211667  | 3-R35                 | ER361642  | 5-R40                 | UM541811  | 7-2                   |
| BT559214  | 7-61                  | EC320051  | 5-C14                 | ER211667  | 5-R8                  | ER361980  | 3-R5                  | UM541833  | 7-4                   |
| BT559214  | 7-67x                 | EC320051  | 5-C17                 | ER211757  | 3-R2                  | ER362441  | 3-R21                 | UM541844  | 7-5x                  |
| BT559225  | 7-62x                 | EC320051  | 5-C19                 | ER211757  | 3-R20                 | ER376413  | 7-32                  | UM541855  | 7-3x                  |
| BT559236  | 7-63x                 | EC320051  | 6-C1                  | ER211757  | 3-R26                 | ER380711  | 5-R44                 | UM541866  | 7-6                   |
| BT559247  | 7-64x                 | EC321208  | 6-C3                  | ER211757  | 3-R29                 | ER380755  | 3-R14                 | UM541877  | 7-25                  |
| BT559271  | 7-65x                 | EC329771  | 3-C3                  | ER211858  | 5-R7                  | ER380913  | 5-R39                 | UM541912  | 7-46                  |
| BT559282  | 7-68x                 | EC329771  | 3-C15                 | ER211858  | 5-R9                  | ER391961  | 3-R9                  | UM541934  | 7-29                  |
| BZ559743  | 2-1x                  | EC329771  | 4-C5                  | ER212174  | 5-R13                 | ER420322  | 3-R25                 | UM541978  | 7-75                  |
| BZ559923  | 7-1x                  | EC329861  | 5-C13                 | ER212264  | 3-R11                 | ER426857  | 5-R3                  | UM541991  | 7-53                  |
| BZ559934  | 7-9x                  | EC329883  | 5-C11                 | ER212264  | 3-R15                 | ER426857  | 5-R42, 43             | UM542046  | 4-2                   |
| BZ559945  | 7-8x                  | EC336104  | 3-C18                 | ER212264  | 4-R6                  | ER430097  | 5-R18                 | UM542057  | 7-43                  |
| CZ541462  | 1-6                   | EC336126  | 3-C21                 | ER212264  | 5-R14, 15             | ER430108  | 4-R12                 | UM542136  | 1-37                  |
| CZ542362  | 1-29                  | EC336148  | 6-C8                  | ER212477  | 5-R2                  | ER430233  | 7-16x                 | UM542160  | 2-14                  |
| CZ549696  | 1-7                   | EC336194  | 4-C14, 15             | ER212477  | 5-R5                  | ER450011  | 5-R35                 | UM542171  | 2-16                  |
| CZ555704  | 1-1x                  | EC337500  | 5-C12                 | ER212477  | 5-R24                 | ER465276  | 3-R6                  | UM542182  | 2-17                  |
| CZ589781  | 1-5                   | EC339096  | 4-C6                  | ER212681  | 3-R4                  | ER517320  | 6-R2                  | UM542226  | 2-20                  |
| CZ717153  | 1-2                   | EC350638  | 3-C16                 | ER212681  | 6-R1                  | ER552925  | 4-R14                 | UM542237  | 2-21                  |
| CZ717164  | 1-3                   | EC357827  | 4-C12, 13             | ER212883  | 3-R1                  | ER552936  | 4-R13                 | UM542248  | 2-24                  |
| CZ717175  | 1-4                   | EC362068  | 3-C7                  | ER212883  | 3-R3                  | ES317531  | 7-99                  | UM542261  | 2-30                  |
| CZ717197  | 1-8                   | EC362158  | 6-C5                  | ER212883  | 3-R12                 | ES469541  | 7-30                  | UM542272  | 2-31                  |
| CZ717208  | 1-9                   | EC368335  | 3-C27                 | ER212883  | 3-R27                 | ES491962  | 2-26                  | UM542305  | 8-10x                 |
| CZ717210  | 1-10                  | EC379170  | 5-C20                 | ER212883  | 4-R8                  | ES516036  | 7-56                  | UM542351  | 2-32                  |
| CZ717221  | 1-11                  | EC379787  | 5-C3                  | ER212883  | 4-R15                 | ES555750  | 2-28                  | UM542373  | 2-3                   |
| CZ717232  | 1-12                  | EC380621  | 3-C28                 | ER212883  | 5-R45                 | ES555783  | 7-26                  | UM542384  | 2-4                   |
| CZ717243  | 1-13                  | EC395504  | 5-C22                 | ER213300  | 3-R22                 | ES555873  | 3-SW1                 | UM542406  | 2-6                   |
| CZ717254  | 1-14                  | EC432810  | 3-C2                  | ER213467  | 5-R20, 21             | ES561767  | 7-31x                 | UM542417  | 2-2                   |
| CZ717265  | 1-15                  | EC434070  | 5-C24                 | ER214290  | 3-R3                  | ET234854  | 5-TR1                 | UM542428  | 2-19                  |
| CZ717276  | 1-16                  | EC444082  | 4-C1                  | ER304290  | 4-R9                  | ET234854  | 5-TR6                 | UM546063  | 7-98                  |
| CZ717287  | 1-17                  | EC450055  | 3-C25                 | ER304290  | 4-R16, 17             | ET329218  | 5-TR2                 | UM546300  | 8-14                  |
| CZ717298  | 1-18                  | EC450066  | 6-C2                  | ER304402  | 4-R18                 | ET329218  | 5-TR4                 | UM547165  | 7-70                  |
| CZ717300  | 1-19                  | EC450270  | 6-C7                  | ER304402  | 5-R6                  | ET329218  | 5-TR8                 | UM547176  | 7-71x                 |
| CZ717311  | 1-20                  | EC450527  | 3-C23                 | ER306360  | 3-R30                 | ET350335  | 5-TR7                 | UM566021  | 1-34                  |
| CZ717322  | 1-21                  | EC456322  | 3-C9                  | ER306843  | 5-R27                 | ET352146  | 5-TR3                 | UM578812  | 7-38x                 |
| CZ717333  | 1-22                  | EC495865  | 5-C2                  | ER306887  | 3-R19                 | ET453486  | 3-TR4, 5, 6           | UM578823  | 7-39x                 |
| CZ717344  | 1-23                  | EC515834  | 6-C6                  | ER306887  | 3-R23                 | ET453486  | 4-TR3 to 6            | UM578834  | 7-37x                 |
| CZ717355  | 1-24                  | EC539842  | 3-C13                 | ER306887  | 3-R32                 | ET491051  | 5-TR5                 | ZG542204  | 1-41                  |
| CZ717366  | 1-25                  | EC552892  | 4-C11                 | ER306887  | 3-R3                  | ET517263  | 3-TR1, 2, 3           | ZG542215  | 2-18                  |
| CZ717377  | 1-26                  | ED219464  | 3-D1                  | ER306887  | 5-R29                 | ET517375  | 4-TR1, 2              | ZG542250  | 2-23                  |
| CZ717388  | 1-27                  | ED219464  | 5-D1                  | ER306887  | 5-R41                 | EV464253  | 3-VR2                 | ZG546377  | 2-25                  |
| CZ717390  | 1-28                  | ED219464  | 5-D5                  | ER306887  | 6-R4                  | EV499364  | 5-VR1                 | ZS200676  | 7-40x                 |
| CZ717412  | 1-30                  | ED491130  | 5-D2                  | ER315213  | 7-17x                 | EV499375  | 5-VR2                 | ZS327835  | 7-35                  |
| EA515204  | 7-88x                 | ED498150  | 4-D9                  | ER324224  | 3-R10                 | EV499882  | 4-VR1, 2              | ZS371856  | 7-52                  |
| EA516047  | 7-55                  | ED511097  | 4-D1 to 8             | ER336442  | 3-R7                  | EV555805  | 7-50                  | ZS413223  | 7-69                  |
| EA541888  | 7-23                  | ED511097  | 6-D1 to 4             | ER336442  | 3-R16                 | EV555816  | 7-51x                 | ZS413741  | 4-5                   |
| EA549448  | 7-100x                | ED514721  | 4-D10, 11             | ER336442  | 3-R28                 | EV555884  | 3-VR1                 | ZS414033  | 8-12x                 |
| EC220127  | 3-C12                 | ED514721  | 4-D13                 | ER336442  | 4-R4                  | EW315448  | 7-97x                 | ZS417025  | 7-72                  |
| EC220151  | 4-C2                  | ED514721  | 5-D3, 4               | ER336442  | 5-R1                  | EW524845  | 7-96x                 | ZS417025  | 8-11x                 |
| EC220151  | 4-C4                  | ED514721  | 5-D6                  | ER336442  | 5-R31                 | EW540112  | 7-94x                 | ZS417148  | 8-8x                  |
| EC220432  | 3-C10                 | ED555895  | 4-D12                 | ER336442  | 6-R3                  | EW559260  | 7-95x                 | ZS417194  | 6-4                   |
| EC220432  | 4-C8                  | EF238634  | 7-78x                 | ER343078  | 3-R13                 | EZ246936  | 7-93x                 | ZS417251  | 2-8                   |
| EC220768  | 4-C7                  | EF277424  | 7-102x                | ER343078  | 4-R1                  | EZ255317  | 7-44                  | ZS417251  | 7-22                  |
| EC220994  | 4-C3                  | EF495718  | 7-77x                 | ER343078  | 5-R10                 | EZ382263  | 7-92x                 | ZS447772  | 2-27                  |
| EC244012  | 4-L1, 2               | EF516881  | 7-80x                 | ER343078  | 5-R18                 | EZ480925  | 7-83x                 | ZS447772  | 4-3                   |
| EC250604  | 3-C1                  | EF559168  | 7-76                  | ER343078  | 5-R37                 | EZ541901  | 7-49                  | ZS447772  | 7-21                  |
| EC250604  | 3-C4                  | EF562498  | 7-79x                 | ER345712  | 7-15x                 | EZ541923  | 7-27                  | ZS447840  | 2-29                  |
| EC250661  | 6-C4                  | EI517342  | 6-IC1                 | ER346544  | 3-R36                 | EZ541956  | 7-73                  | ZS450832  | 7-36x                 |
| EC250683  | 5-C5                  | EJ255003  | 7-81                  | ER346601  | 5-R4                  | EZ541967  | 7-74                  | ZS462194  | 8-16x                 |
| EC250841  | 4-C9, 10              | EJ255036  | 7-82x                 | ER346601  | 5-R36                 | EZ541980  | 7-54                  | ZS462881  | 7-59                  |
| EC250885  | 6-C9                  | EJ350447  | 5-TP1, 4              | ER346994  | 4-R7                  | EZ542024  | 4-4                   | ZS464703  | 1-33                  |
| EC250918  | 1-36x                 | EJ420074  | 7-13x                 | ER347038  | 4-R11                 | EZ542035  | 6-2                   | ZS481645  | 7-28                  |
| EC251291  | 3-C6                  | EJ514822  | 7-89x                 | ER347073  | 3-R18                 | EZ542081  | 7-18                  | ZS555737  | 1-40                  |
| EC251291  | 5-C15                 | EJ555794  | 7-41                  | ER349907  | 5-R11                 | EZ545444  | 7-87x                 | ZS559135  | 7-42                  |
| EC251291  | 5-C18                 | EJ555851  | 7-10                  | ER349907  | 5-R19                 | EZ546546  | 7-90                  | ZS565953  | 7-86x                 |
| EC251291  | 5-C21                 | EJ555862  | 7-11x                 | ER349907  | 5-R22                 | EZ578992  | 7-19x                 | ZS589454  | 1-35                  |
| EC290520  | 5-C23                 | EJ558246  | 7-12                  | ER349907  | 5-R34                 | MB542283  | 7-103                 | ZW270088  | 7-7                   |

