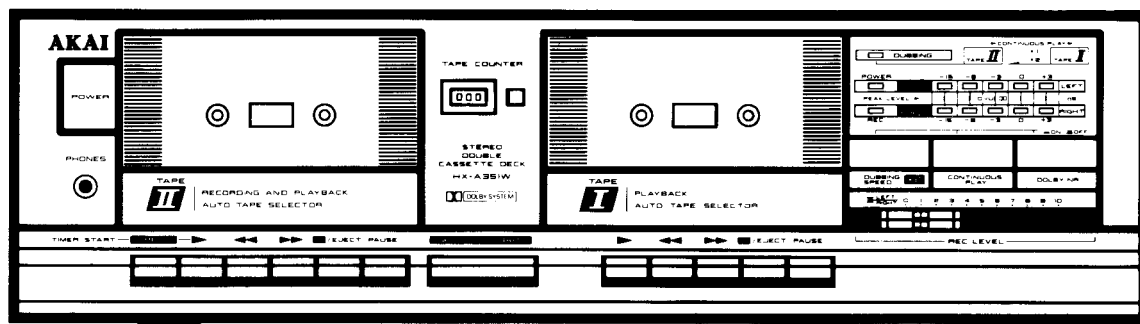


# AKAI SERVICE MANUAL



## STEREO DOUBLE CASSETTE DECK

## MODEL HX-A351W

### SPECIFICATIONS

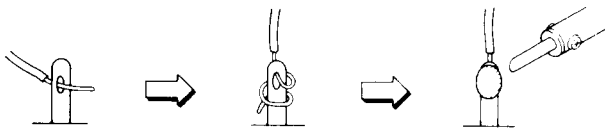
<b>Track system</b> .....	4 track 2 channel stereo	<b>Input sensitivity/Impedance</b> .....	LINE 70 mV/47 kohms
<b>Heads</b> .....	Tape I HD head for recording and playback ×1 Erase head ×1 Tape II HD head for playback ×1	<b>Output level/Impedance</b> .....	LINE 388 mV/1 kohms PHONES 0.3 mW
<b>Motors</b> .....	Tape I Electronically speed controlled DC motor ×1 Tape II Electronically speed controlled DC motor ×1	<b>Power requirements</b> .....	120 V, 60 Hz for USA & Canada 220 V, 50 Hz for Europe except UK 240 V, 50 Hz for UK & Australia 110 V/120 V/220 V/240 V, 50 Hz/60 Hz convertible for other countries
<b>Wow &amp; flutter</b> .....	0.09% WRMS, 0.16% (DIN)	<b>Dimensions</b> .....	440 (W) × 123 (H) × 279 (D) mm (17.3 × 4.8 × 11.0 inches)
<b>Frequency response</b> .....	Normal 30 Hz to 15,000 Hz ±3 dB CrO <sub>2</sub> 30 Hz to 15,000 Hz ±3 dB Metal 30 Hz to 16,000 Hz ±3 dB	<b>Weight</b> .....	4.0 kg (8.8 lbs)
<b>S/N (Metal)</b> .....	56 dB Dolby NR switch ON: Improves up to 5 dB at 1 kHz, 10 dB above 5 kHz		
<b>Harmonic distortion</b> .....	0.8% (Metal)		

\* For improvement purposes, specifications and design are subject to change without notice.

# ★ SAFETY INSTRUCTIONS

## PRECAUTIONS DURING SERVICING

1. Parts identified by the  $\Delta$  symbol parts are critical for safety. Replace only with parts number specified.
2. In addition to safety, other parts and assemblies are specified for conformance with such regulations as those applying to spurious radiation. These must also be replaced only with specified replacements.  
Examples: RF converters, tuner units, antenna selector switches, RF cables, noise blocking capacitors, noise blocking filters, etc.
3. Use specified internal wiring. Note especially:
  - 1) Wires covered with PVC tubing
  - 2) Double insulated wires
  - 3) High voltage leads
4. Use specified insulating materials for hazardous live parts. Note especially:
  - 1) Insulation Tape
  - 2) PVC tubing
  - 3) Spacers (Insulating Barriers)
  - 4) Insulation sheets for transistors
  - 5) Plastic screws for fixing microswitch (especially in turntable)
5. When replacing AC primary side components (transformers, power cords, noise blocking capacitors, etc.), wrap ends of wires securely about the terminals before soldering.



6. Observe that wires do not contact heat producing parts (heatsinks, oxide metal film resistors, fusible resistors, etc.).

7. Check that replaced wires do not contact sharp edged or pointed parts.
8. Also check areas surrounding repaired locations.
9. Use care that foreign objects (screws, solder droplets, etc.) do not remain inside the set.

## SAFETY CHECK AFTER SERVICING

Confirm the specified insulation resistance between power cord plug prongs and externally exposed parts of the set is greater than 10 M ohms. but for equipment with external antenna terminals (tuner, receiver, etc.) and is intended for  $\square C$  or  $\square A$ , specified insulation resistance should be headphone jacks line-in-out jacks etc. more than 2.2 M ohms (ground terminals, microphone jacks).

# ★ INFORMATION

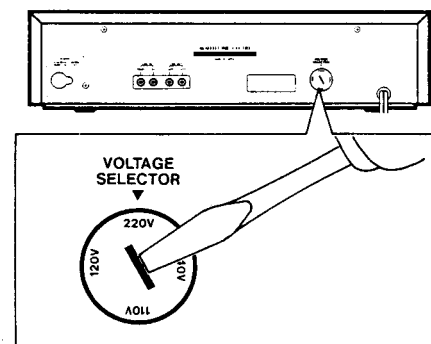
## SYMBOLS FOR PRIMARY DESTINATION

Alphabet indicates the destination of the units as listed below.

Symbols	Principal Destinations
$\square A$	USA
$\square B$	UK
$\square C$	Canada
$\square E$	Europe (except UK)
$\square J$	Japan
$\square S$	Australia
$\square V$	W. Germany only
$\square U$	Universal Area
$\square Y^*$	Custom version

## VOLTAGE CONVERSION ( $\square U$ Model only)

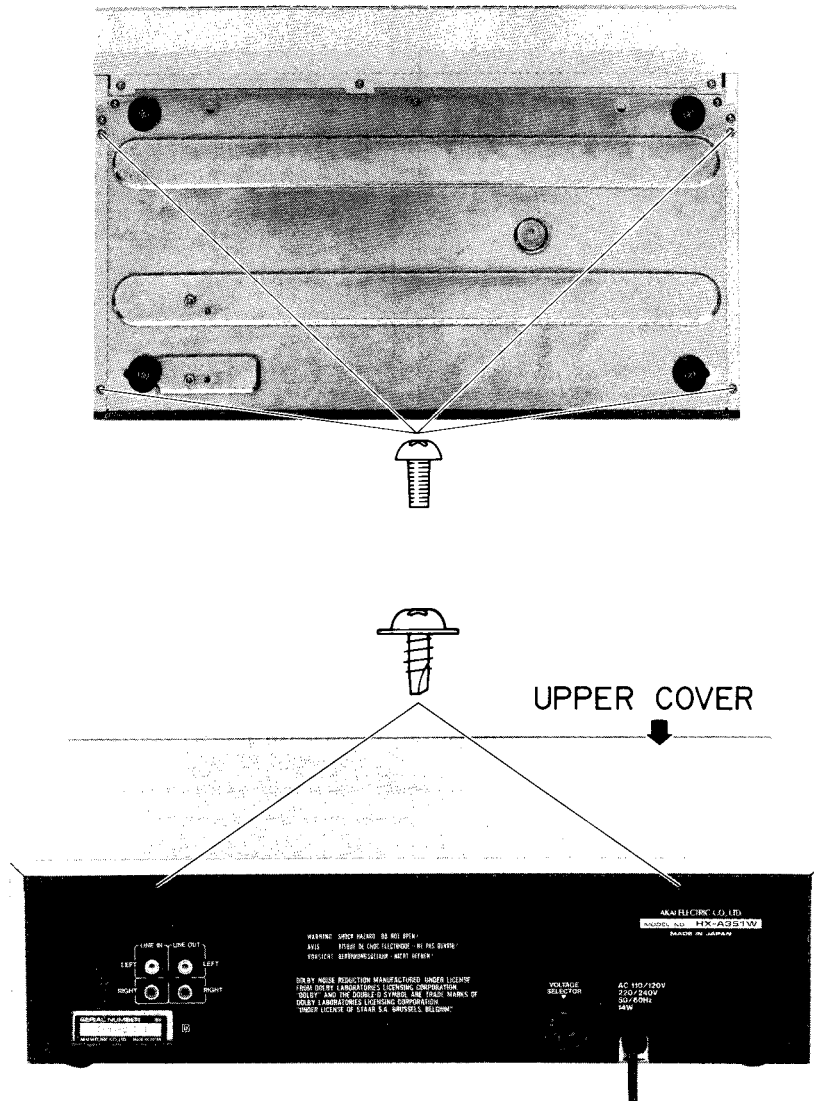
Before connecting the power cord. SET the VOLTAGE SELECTOR located on the rear panel with a screwdriver so that the correct voltage is indicated.



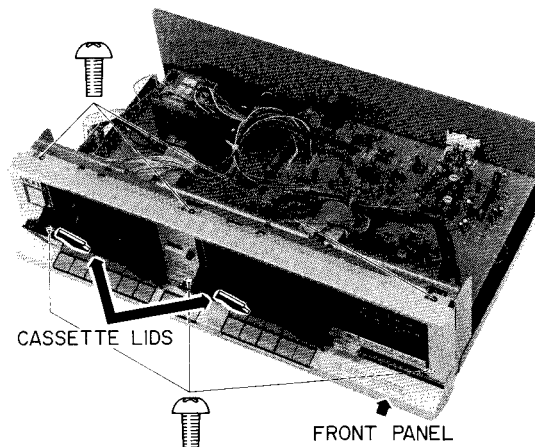
# I. DISMANTLING OF UNIT

In case of trouble, etc. necessitating dismantling, please dismantle in the order shown in the photographs. Reassemble in reverse order.

## 1 REMOVAL UPPER COVER

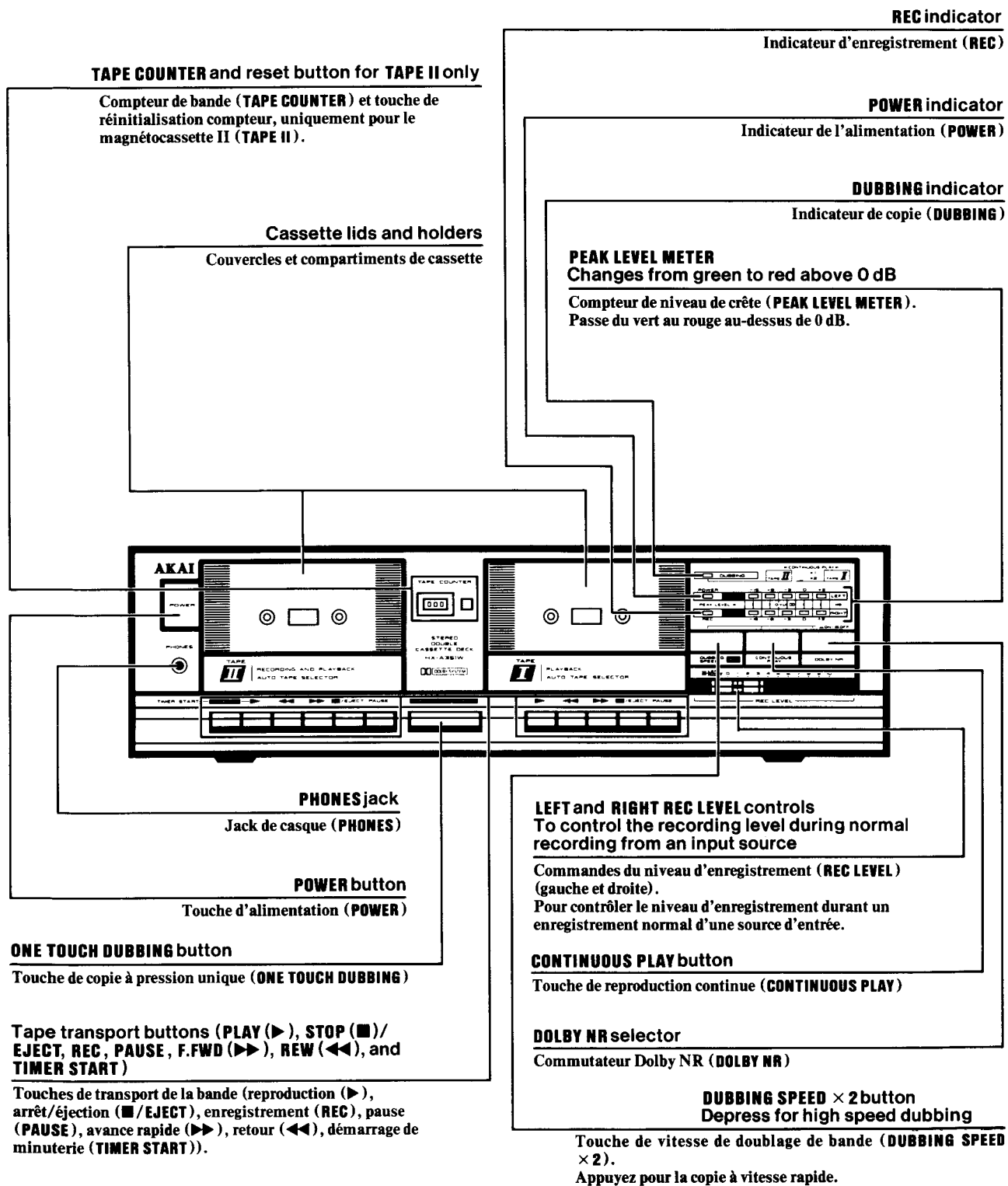


## 2 REMOVAL CASSETTE LID & FRONT PANEL



\* Remove the cassette lids first then remove the front panel

## II. CONTROLS



### III. PRINCIPAL PARTS LOCATION

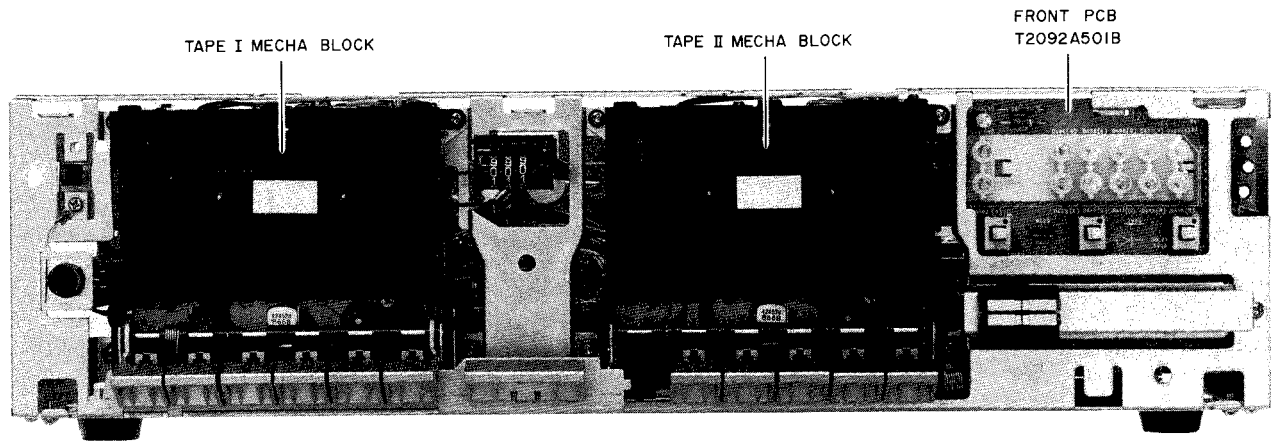


Fig. 3-1 Front View

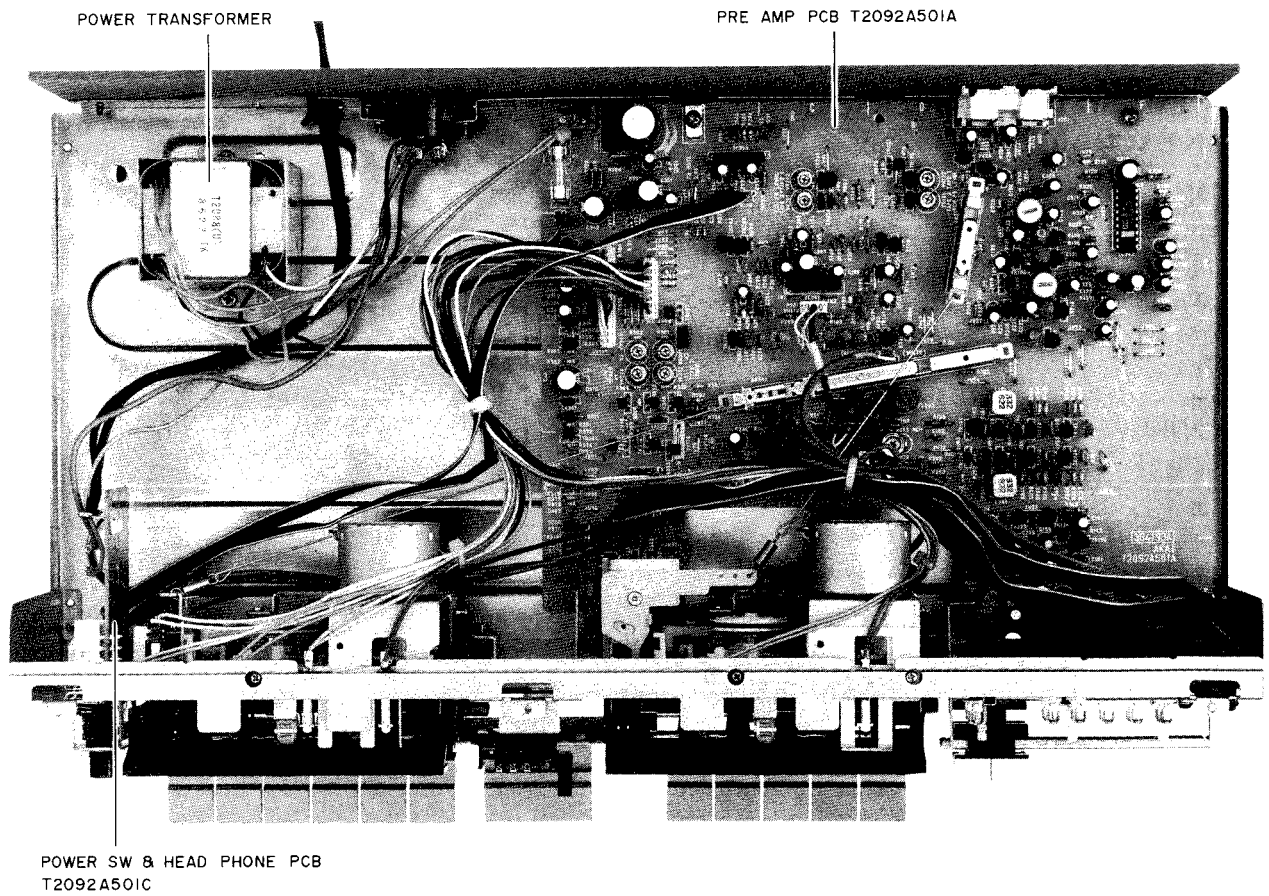


Fig. 3-2 Top View

## IV. MECHANICAL ADJUSTMENT

### 4-1. PINCH ROLLER PRESSURE MEASUREMENT

Put in PLAY mode. Push pinch roller arm down with the spring gauge, push the pinch Roller 1 to 2mm away from the Capstan and release slowly.

Read the spring gauge at the moment the pinch roller touches the capstan and begins to rotate. Specified contact pressure measurement of 200 to 400 gm. If there is no measurement obtained, replace the pinch Roller spring.

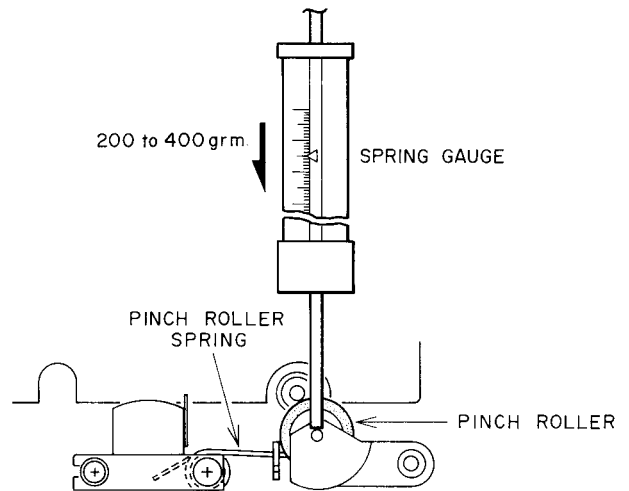


Fig. 4-1

### 4-2. WINDING TORQUE MEASUREMENT IN EACH MODE

Insert cassette torque meter (AJ-751179) and measure in each mode. For Fast Forward and Rewind, measure at the end of tape when the tape has stopped running.

#### PLAY Mode

Take up Torque: 35 to 75 gm-cm

Back tension torque: 1 to 6 gm-cm

#### FAST FORWARD, REWIND mode

Take up Torque: 70 to 160 gm-cm

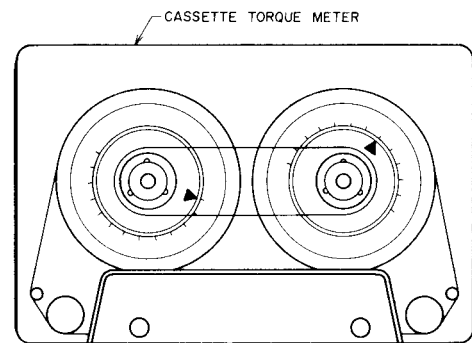


Fig. 4-2

### 4-3. REC/PB HEAD AZIMUTH ADJUSTMENT

- 1) Remove an azimuth cover.
- 2) Play Back a 10 kHz Azimuth Alignment Tape (AT-750778) and Adjust the Azimuth Alignment Screw, until the output levels of both channels are maximum.
- 3) After Adjustment, Paintlock the Azimuth Alignment Screw.

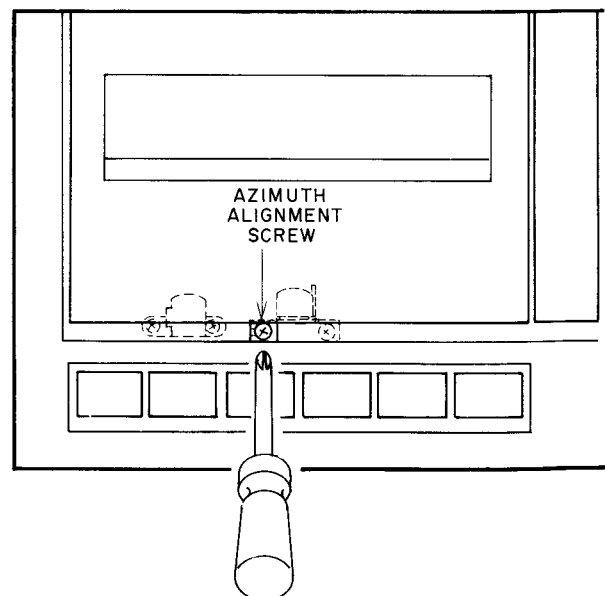


Fig. 4-3

# V. PRE-AMP PCB ADJUSTMENT

STEP	ADJUSTMENT ITEM
1.	TEST TAPE, SUPPLY SIGNAL
2.	MODE
3.	ADJUSTMENT PARTS
4.	RESULT
5.	REMARKS

5	PB LEVEL (TAPE II)
1.	315Hz (AT750773)
2.	PB
3.	VR102 (Rch), VR202 (Lch)
4.	$-6.0 \pm 0.2$ dBm

6	PB LEVEL (TAPE I)
1.	315Hz (AT750773)
2.	PB
3.	VR101 (Rch), VR201 (Lch)
4.	$-6.0 \pm 0.2$ dBm

2	TAPE SPEED (TAPE I)
1.	3150Hz (AT751263)
2.	DOUBLE SPEED
3.	VR301
4.	$6255\text{Hz} \pm 5\text{Hz}$
5.	SHORT THE JUMPER WIRE (JW110). SPEED SELECTOR SW ON

1	TAPE SPEED (TAPE II)
1.	3150Hz (AT751263)
2.	DOUBLE SPEED
3.	VR303
4.	$6270\text{Hz} \pm 5\text{Hz}$
5.	SHORT THE JUMPER WIRE (JW110). SPEED SELECTOR SW ON

3	TAPE SPEED (TAPE II)
1.	3150Hz (AT751263)
2.	NORMAL PB SPEED
3.	VR304
4.	$3140\text{Hz} \pm 5\text{Hz}$
5.	SPEED SELECTOR SW OFF CUT THE JUMPER WIRE

4	TAPE SPEED (TAPE I)
1.	3150Hz (AT751263)
2.	NORMAL PB SPEED
3.	VR302
4.	$3125\text{Hz} \pm 5\text{Hz}$
5.	SPEED SELECTOR SW OFF CUT THE JUMPER WIRE

7	NORMAL POSITION FREQUENCY RESPONSE
1.	NORMAL BLANK TAPE 1kHz, 10kHz, $-26.0$ dBm
2.	REC/PB
3.	VR104 (Rch), VR204 (Lch)
4.	$-2.6 \pm 0.3$ dBm (1kHz, 10kHz)

8	REC LEVEL
1.	NORMAL BLANK TAPE 315Hz, $-6.0$ dBm
2.	REC/PB
3.	VR103 (Rch), VR203 (Lch)
4.	$-6.0 \pm 0.3$ dBm

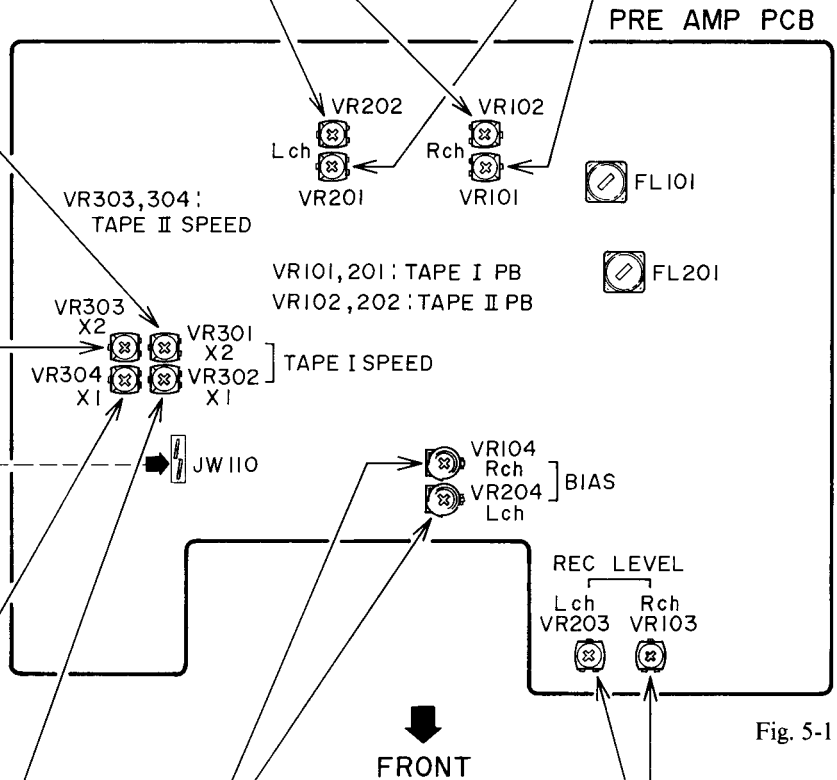


Fig. 5-1

NOTES: ALL ADJUSTMENT ARE WITHOUT DOLBY.  
USE THE FOLLOWING CASSETTE MEASURING TAPES:  
NORMAL TAPE : MACELL UDI C-60  
CrO<sub>2</sub> TAPE : TDK SA C-60  
METAL TAPE : TDK MA C-60

# VI. PARTS LIST

## ATTENTION

1. When placing an order for parts, be sure to list Part No., Model No. and the description of each part. Otherwise, the non-delivery of the part or the delivery of a wrong part may result.
2. Please make sure that Part No. is correct when ordering.  
If not, a part different from the one you ordered may be delivered.
3. Since the parts shown in Parts List of Preliminary Service Manual may have been the subject of changes, please use this Parts List for all future reference.

## HOW TO USE THIS PARTS LIST

1. This Parts List lists those parts which are considered necessary for repairs. Other common parts, such as resistors and capacitors, are listed in the "Common List for Service Parts" from which these parts should be selected and stocked.
2. The Recommended Spare Parts List shows those parts in the Parts List which are considered particularly important for service.
3. Parts not shown in the Parts List and "Common List for Service Parts" will not in principle be supplied.
4. How to read the Parts List.

a) Mechanism Block

b) PC Board

### 2. HEAD BASE BLOCK

REF. NO.	PART NO.	DESCRIPTION
2-1x	BH-T2023A320A	HEAD BASE BLOCK
2-2	HP-H2206A010A	HEAD R/P PR4-8FU C
2-3	ZS-477876	PAN20x03STL CMT
2-4	ZS-536488	BID20x08STL CMT
2-5	ZG-402895	SP CS ANGLE ADJUST

- SP (Service Parts) Classification
- A small "x" indicates that this part is not shown in the Photo or Illustration.
- This number corresponds with the individual parts index number in that figure.
- This number corresponds with the Figure Number.

### 6. MAIN PC BOARD

REF. NO.	PART NO.	DESCRIPTION
6-IC1	EI-324536	IC HD14049BP
6-IC2	EI-336801	IC MB8841-564M
6-C1A	EC-338399	C MMY V 223M 250AC [U,E,B,S]
6-C1B	EC-350949	C MMY V 223M 250DC [J]
6-C1C	EC-338397	C MMY V 223M 125AC [C,A]
6-X1	EI-318384	OSC X'TAL NC-18C

- Symbols for primary destination
- [A]: AAL(U.S.A.) [S]: SAA(Australia)
- [B]: BEAB(England) [U]: U/T(Universal Area)
- [C]: CSA(Canada) [V]: VDE(W. Germany)
- [E]: CEE(Europe) [Y]: Custom Version
- [J]: JPN(Japan)
- SP (Service Parts) Classification
- These reference symbols correspond with component symbols in the Schematic Diagrams.

The available PC Board Blocks are listed separately.

5. When Part No. is known, Parts Index at end of Parts List can be used to locate where that part is shown in Parts List by its Reference No. listed at right of Part No.

## WARNING

**⚠ INDICATES SAFETY CRITICAL COMPONENTS. FOR CONTINUED SAFETY, REPLACE SAFETY CRITICAL COMPONENTS ONLY WITH MANUFACTURE'S RECOMMENDED PARTS**

## AVERTISSEMENT

**⚠ IL INDIQUE LES COMPOSANTS CRITIQUES DE SÉCURITÉ. POUR MAINTENIR LE DEGRÉ DE SÉCURITÉ DE L'APPAREIL, NE REMPLACER QUE DES PIÈCES RECOMMANDÉES PAR LE FABRICANT**

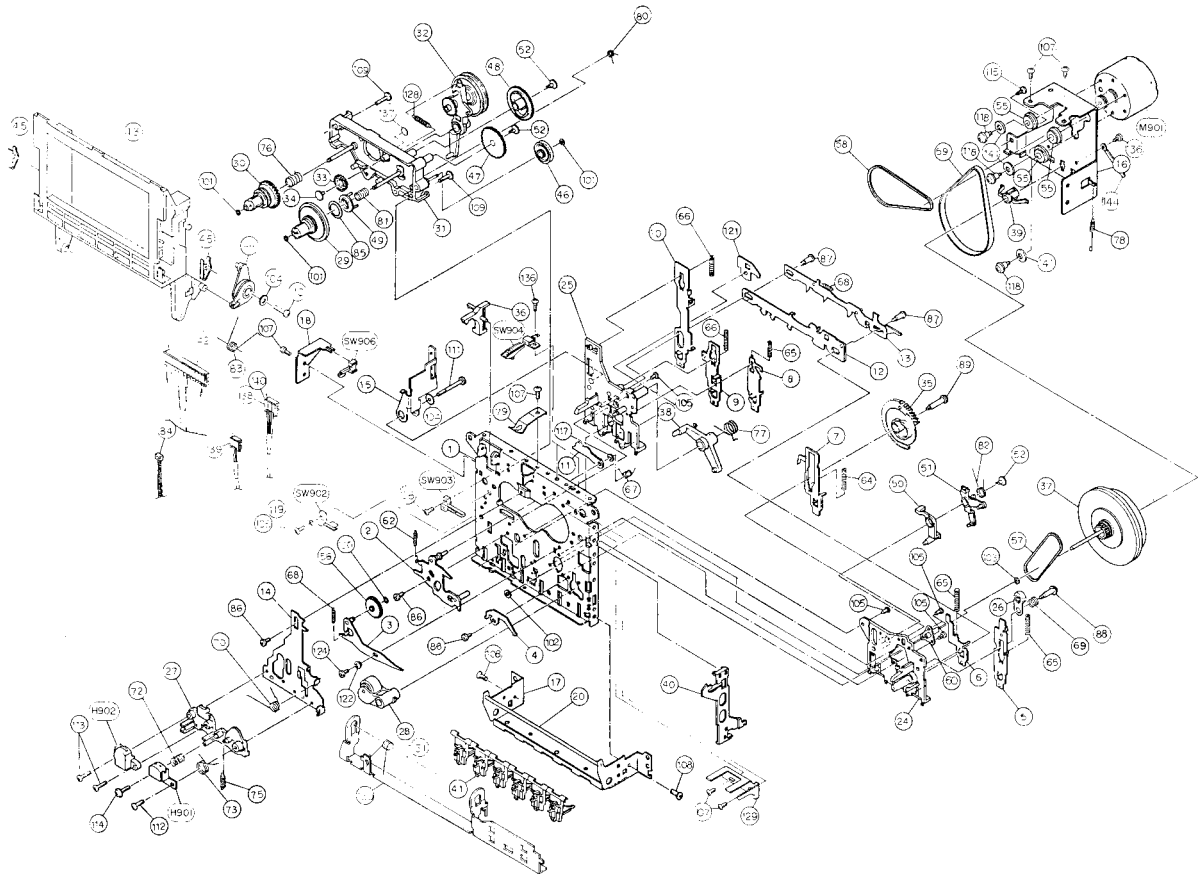


## RECOMMENDED SPARE PARTS LIST

Because, if the parts listed below are on hand, almost any repair can be accomplished, we suggest that you stock these Recommended Spare Parts Items.

REF. NO.	PART NO.	DESCRIPTION	REF. NO.	PART NO.	DESCRIPTION
1	N BB-364177-B	MECHA AKI-103FMF (2)	69	ED-357754	△ D SILICON DS135D 200/1.0A
2	N BB-364178-C	MECHA AKI-102FMF (1)	70	ED-349662	△ D SILICON DS135E-FA6 F10 100/1.0A
3	BL-712799	PINCH ROLLER ARM ASSY			
4	BM-715942	MOTOR BLK W/PULLEY EG510KD-2B D0.3W	71	ED-364197	D LED SLH-56MT3 GREEN
5	BR-715919	SUPPLY REEL TABLE BLK HX-M10	72	ED-364194	D LED SLH-56VT3 RED
6	BR-715918	TAKE-UP REEL TABLE BLK HX-M10	73	N ED-364196	D LED SLH-56YT3 YELLOW
7	BT-362581	△ TRANS POWER T2088 (C, A)	74	ED-301911	D SILICON H DS448
8	BT-362582	△ TRANS POWER T2088 (E, V)	75	ED-344280	D SILICON H GMA-01-FY2 F05
9	BT-362580	△ TRANS POWER T2088 (U)	76	ED-324014	D ZENER H HZ11 B1
10	ED-330319	△ D SILICON DBA10B 100/1.0A	77	ED-337267	D ZENER H HZ4 A1
11	ED-357754	△ D SILICON DS135D 200/1.0A	78	EF-355226	△ FUSE BET T 1.00A 250V
12	ED-349662	△ D SILICON DS135E-FA6 F10 100/1.0A	79	EF-341264	△ FUSE GGS A 125V 1.60A
13	ED-364197	D LED SLH-56MT3 GREEN	80	EF-623103	△ FUSE SEMKO T 1.00A 250V
14	ED-364194	D LED SLH-56VT3 RED	81	EH-364198	FILTER DOLBY 42B-5070-02
15	N ED-364196	D LED SLH-56YT3 YELLOW	82	EI-361561	IC BA3402SP
16	ED-301911	D SILICON H DS448	83	EI-347634	IC HA12045
17	ED-344280	D SILICON H GMA-01-FY2 F05	84	N EI-337228	IC M5218L
18	ED-324014	D ZENER H HZ11 B1	85	EO-356809	COIL FIX 1 100z-121 100.00KC
19	ED-337267	D ZENER H HZ4 A1	86	EO-349589	COIL OSC 1 32-5016-12
20	EF-355226	△ FUSE BET T 1.00A 250V	87	ER-200926	△ R FUSE ERD2FC 1/4W 27ROG
21	EF-341264	△ FUSE GGS A 125V 1.60A	88	ES-358646	△ SW PUSH SUL121S 1-012-02N
22	EF-623103	△ FUSE SEMKO T 1.00A 250V	89	ES-716680	SW LEAF LSA-1119G
23	EH-364198	FILTER DOLBY 42B-5070-02	90	ES-713179	SW LEAF LSA-1123-37
24	EI-361561	IC BA3402SP	91	N ES-715944	SW LEAF LSA-1132EAU
25	EI-347634	IC HA12045	92	ES-749290	SW LEAF LSB-1123
26	N EI-337228	IC M5218L	93	ES-363893	SW PUSH SPEC12
27	EO-356809	COIL FIX 1 100Z-121 100.00KC	94	ES-361562	SW SLIDE SSCK1C 1-12-02
28	EO-349589	COIL OSC 1 32-5016-12	95	ES-361564	SW SLIDE T2088
29	ER-200926	△ R FUSE ERD2FC 1/4W 27ROG	96	ET-308472	TR 2SA1115 E,F,G F05
30	ES-358646	△ SW PUSH SUL121S 1-012-02N	97	ET-308977	TR 2SC2274K F F05
31	ES-359606	△ SW SELECTOR (U)	98	ET-349705	TR 2SC2320 E,F,G
32	ES-716680	SW LEAF LSA-1119G	99	ET-308141	TR 2SC2603 G F05
33	ES-713179	SW LEAF LSA-1123-37	100	ET-349272	TR 2SC3242A E,F F05
34	N ES-715944	SW LEAF LSA-1132EAU	101	ET-349606	TR 2SC3382 T,U F05
35	ES-749290	SW LEAF LSB-1123	102	ET-349366	TR 2SC3402 F05
36	ES-363893	SW PUSH SPEC12	103	ET-338324	TR 2SD1012-V H F05
37	ES-361562	SW SLIDE SSCK1C 1-12-02	104	ET-354083	TR 2SD1189 Q,R
38	ES-361564	SW SLIDE T2088	105	ET-310148	TR 2SD612K E,F
39	ET-308472	TR 2SA1115 E,F,G F05	106	EV-353557	R S-FIX H RVF6P01 3P 202
40	ET-308977	TR 2SC2274K F F05	107	EV-337996	R S-FIX H RVF8P01 3P 104
41	ET-349705	TR 2SC2320 E,F,G	108	EV-356024	R S-FIX RVF6P01 3P 104
42	ET-308141	TR 2SC2603 G F05	109	EV-356024	R S-FIX RVF6P01 3P 104
43	ET-349272	TR 2SC3242A E,F F05	110	EV-353558	R S-FIX RVF6P01 3P 203
44	ET-349606	TR 2SC3382 T,U F05	111	EV-353556	R-FIX H RVF6P01 3P 102
45	ET-349366	TR 2SC3402 F05	112	EV-367044	VR SLIDE T2092 A503×2
46	ET-338324	TR 2SD1012-V H F05	113	HE-337047	HEAD E HAJAB3040A C
47	ET-354083	TR 2SD1189 Q,R	114	HP-712824	HEAD R/P HY424528 SVK
48	ET-310148	TR 2SD612K E,F	115	MB-712818	BELT AUTO
49	EV-353557	R S-FIX H RVF6P01 3P 202	116	MB-715939	BELT CAPSTAN
50	EV-337996	R S-FIX H RVF8P01 3P 104	117	MB-716683	BELT FR
51	EV-356024	R S-FIX RVF6P01 3P 104			
52	EV-356024	R S-FIX RVF6P01 3P 104			
53	EV-353558	R S-FIX RVF6P01 3P 203			
54	EV-353556	R-FIX H RVF6P01 3P 102			
55	EV-367044	VR SLIDE T2092 A503 × 2			
56	HE-337047	HEAD E HAJAB3040A C			
57	HP-712824	HEAD R/P HY424528 SVK			
58	MB-712818	BELT AUTO			
59	MB-715939	BELT CAPSTAN			
60	MB-716683	BELT FR			
61	BL-712799	PINCH ROLLER ARM ASSY			
62	BM-715942	MOTOR BLK W/PULLEY EG510KD-2B D0.3W			
63	BR-715919	SUPPLY REEL TABLE BLK HX-M10			
64	BR-715918	TAKE-UP REEL TABLE BLK HX-M10			
65	BT-362581	△ TRANS POWER T2088 (C,A)			
66	BT-362582	△ TRANS POWER T2088 (E,V)			
67	BT-362580	△ TRANS POWER T2088 (U)			
68	ED-330319	△ D SILICON DBA10B 100/1.0A			

## MECHA (REC/PB) BLOCK

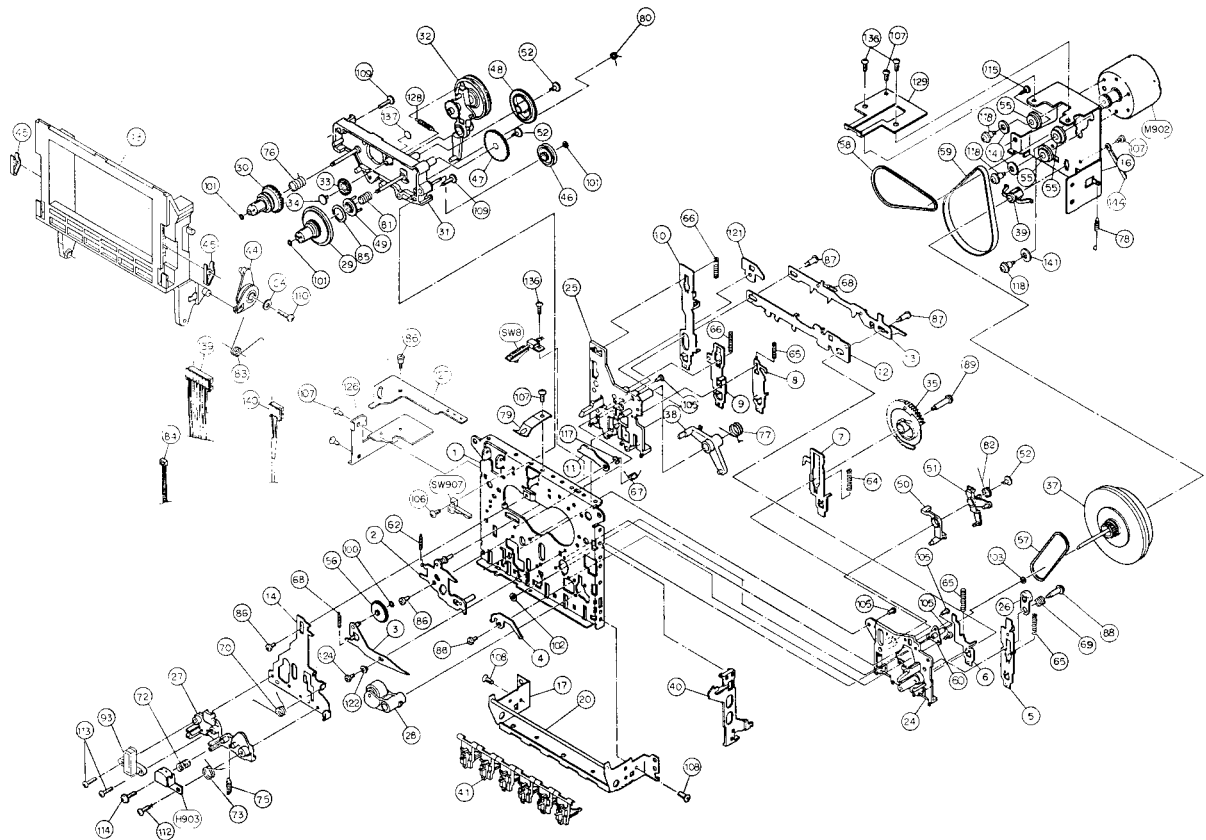


### 1. MECHA (REC/PB) BLOCK

REF. NO.	PART NO.	DESCRIPTION	REF. NO.	PART NO.	DESCRIPTION
1-1	BB-364178-C	MECHA AKI-102FMF (1)	1-68	ZG-716188	SP CAM
1-26	MZ-716171	CAM PAUSE	1-69	ZG-716189	SP PAUSE CAM
1-27	HZ-716172	BASE HEAD	1-70	ZG-716190	SP HEAD CHASSIS
1-28	BL-712799	PINCH ROLLER ARM ASSY	1-72	ZG-716686	SP HEAD
1-29	BR-715918	TAKE-UP REEL TABLE BLK	1-73	ZG-716687	SP PINCH ROLLER
		HX-M10	1-75	ZG-715940	SP HEAD RETURN
1-30	BR-715919	SUPPLY REEL TABLE BLK	1-77	ZG-716579	SP LOCK ARM
		HX-M10	1-78	ZG-716193	SP EJECT LEVER
1-32	MI-715935	CLUTCH ARM ASSY	1-79	ZG-712822	SP PACK
1-33	MZ-712804	GEAR FF	1-80	ZG-716194	SP AUTO SENSOR
1-34	MZ-749256	BUSH	1-81	ZG-716355	SP AUTO CLUTCH
1-35	MZ-711710	GEAR C	1-82	ZG-716197	SP AUTO LOCK ARM
1-36	ML-712806	SENSOR REC	1-83	ZG-716688	SP HOLDER CASSETTE
1-37	BF-712807	FLYWHEEL ASSY	1-85	TC-712823	FELT AUTO CLUTCH
1-38	ML-716175	ARM LOCK (H)	1-87	ZS-715982	SCREW [B]
1-39	MZ-712808	HOLDER CAPSTAN	1-88	ZS-716203	SCREW SPECIAL [C]
1-40	ML-712809	LEVER EJECT	1-89	ZS-716204	SCREW SPECIAL [D]
1-41	SB-716178	BUTTON LEVER	1-101	ZW-716206	PW17×035×025PSL
1-43	TC-712810	LID FRAME	1-112	ZS-536488	BID20×08STL CMT
1-44	TC-712811	DAMPER ASSY	1-113	ZS-749293	BID20×09STL CMT TW
1-45	ZG-712816	CLAMP CASSETTE	1-114	ZS-749293	BID20×09STL CMT TW
1-46	MI-712812	PULLEY AUTO	1-118	ZS-716576	SCREW SPECIAL MOTOR
1-47	MZ-712813	GEAR AUTO	1-128	ZG-715922	SP CLUTCH ARM
1-48	MZ-712814	GEAR CAM AUTO	1-M901	BM-715942	MOTOR BLK W/PULLEY
1-49	MI-715920	CLUTCH AUTO			EG510KD-2B D0.3W
1-50	ML-716179	ARM AUTO [B]	1-H901	HP-712824	HEAD R/P HY424528 SVK
1-51	ML-716180	ARM AUTO LOCK	1-H902	HE-337047	HEAD E HAJAB3040A C
1-52	ZW-716181	BUSH	1-SW902	ES-716680	SW LEAF LSA-1119G
1-55	MB-715936	CUSHION MOTOR	1-SW903	ES-749290	SW LEAF LSB-1123
1-56	MI-712817	IDLER PLAY	1-SW904,905	ES-715944	SW LEAF LSA-1132EAU
1-57	MB-712818	BELT AUTO	1-SW906	ES-713179	SW LEAF LSA-1123-37
1-58	MB-716683	BELT FR			
1-59	MB-715939	BELT CAPSTAN			
1-60	ZG-716577	MAIN CASE ASSY			
1-62	MZ-716685	SP SHAFT ARM [C]			
1-67	ZG-716187	SP REC LEVER			

**Note:** Parts will not be supplied if they are not listed in the parts list, even if they appear on the assembling illustrations with reference No.

## MECHA (PB) BLOCK



## 2. MECHA (PB) BLOCK

REF. NO.	PART NO.	DESCRIPTION	REF. NO.	PART NO.	DESCRIPTION
2-1	BB-364177-B	MECHA AKI-103FMF (2)	2-67	ZG-716187	SP REC LEVER
2-26	MZ-716171	CAM PAUSE	2-68	ZG-716188	SP CAM
2-27	HZ-716172	BASE HEAD	2-69	ZG-716189	SP PAUSE CAM
2-28	BL-712799	PINCH ROLLER ARM ASSY	2-70	ZG-716190	SP HEAD CHASSIS
2-29	BR-715918	TAKE-UP REEL TABLE BLK HX-M10	2-72	ZG-716686	SP HEAD
2-30	BR-715919	SUPPLY REEL TABLE BLK HX-M10	2-73	ZG-716687	SP PINCH ROLLER
2-32	MI-715935	CLUTCH ARM ASSY	2-75	ZG-715940	SP HEAD RETURN
2-33	MZ-712804	GEAR FF	2-77	ZG-716579	SP LOCK ARM
2-34	MZ-749256	BUSH	2-78	ZG-716193	SP EJECT LEVER
2-35	MZ-711710	GEAR C	2-79	ZG-712822	SP PACK
2-37	BF-712807	FLYWHEEL ASSY	2-80	ZG-716194	SP AUTO SENSOR
2-38	ML-716175	ARM LOCK (H)	2-81	ZG-716355	SP AUTO CLUTCH
2-39	MZ-712808	HOLDER CAPSTAN	2-82	ZG-716197	SP AUTO LOCK ARM
2-40	ML-712809	LEVER EJECT	2-83	ZG-716688	SP HOLDER CASSETTE
2-41	SB-716178	BUTTON LEVER	2-85	TC-712823	FELT AUTO CLUTCH
2-43	TC-712810	LID FRAME	2-87	ZS-715982	SCREW [B]
2-44	TC-712811	DAMPER ASSY	2-88	ZS-716203	SCREW SPECIAL [C]
2-45	ZG-712816	CLAMP CASSETTE	2-89	ZS-716204	SCREW SPECIAL [D]
2-46	MI-712812	PULLEY AUTO	2-93	MS-715941	TAPE GUIDE
2-47	MZ-712813	GEAR AUTO	2-101	ZW-716206	PW17×035×025PSL
2-48	MZ-712814	GEAR CAM AUTO	2-112	ZS-536488	BID20×08STL CMT
2-49	MI-715920	CLUTCH AUTO	2-113,114	ZS-749293	BID20×09STL CMT TW
2-50	ML-716179	ARM AUTO [B]	2-118	ZS-716576	SCREW SPECIAL MOTOR
2-51	ML-716180	ARM AUTO LOCK	2-128	ZG-715922	SP CLUTCH ARM
2-52	ZW-716181	BUSH	2-M902	BM-715942	MOTOR BLK W/PULLEY EG510KD-2B D0.3W
2-55	MB-715936	CUSHION MOTOR	2-H903	HP-712824	HEAD R/P HY424528 SVK
2-56	MI-712817	IDLER PLAY	2-SW907	ES-749290	SW LEAF LSB-1123
2-57	MB-712818	BELT AUTO	2-SW908	ES-715944	SW LEAF LSA-1132EAU
2-58	MB-716683	BELT FR			
2-59	MB-715939	BELT CAPSTAN			
2-60	MZ-716577	MAIN CASE ASSY			
2-62	ZG-716685	SP SHAFT ARM [C]			

**Note:** Parts will not be supplied if they are not listed in the parts list, even if they appear on the assembling illustrations with reference No.

### 3. PC BOARD BLOCK

REF. NO.	PART NO.	DESCRIPTION
3-1	BA-T2092A020A	PC PRE AMP BLK HX-A351W

**Note:** PC PRE AMP BLK consists of PRE AMP PC BOARD, FRONT PC BOARD, HEAD PHONE PC BOARD, POWER SW PC BOARD.

### 4. PRE AMP PC BOARD

REF. NO.	PART NO.	DESCRIPTION
<b>PRE AMP PC BOARD</b>		
4-C101	EC-306017	C STY F05 CQ09S 221J 50DC
4-C102	EC-324109	C STY V S05 CQFS 181J 50DC
4-C103	EC-334071	C STY V F05 CQFS 391J 50DC
4-C120	EC-315768	C EC V F05 AS1 R47M 50DC
4-C121	EC-562678	C STY V 751J 50DC
4-C123	EC-314992	C STY S05 CQFS 681J 50DC
4-C201	EC-306017	C STY V F05 CQ09S 221J 50DC
4-C202	EC-324109	C STY V S05 CQFS 181J 50DC
4-C203	EC-334071	C STY V F05 CQ09S 391J 50DC
4-C220	EC-315768	C EC V F05 AS1 R47M 50DC
4-C221	EC-562678	C STY V 751J 50DC
4-C223	EC-314992	C STY V S05 CQFS 681J 50DC
4-C330	EC-349631	C PP V F10 ECQ-F 182J 630DC
4-C347	EC-324662	C EC V CUT AS1 222M 25DC
4-D301 to 305	ED-344280	D SILICON H GMA-01-FY2 F05
4-D306	ED-301911	D SILICON H DS448
4-D307	ED-344280	D SILICON H GMA-01-FY2 F05
4-D308 to 314	ED-344280	D SILICON H GMA-01-FY2 F05
4-D315	ED-349662	△ D SILICON DS135E-FA6 F10 100/1.0A
4-D316,317	ED-344280	D SILICON H GMA-01-FY2 F05
4-D318	ED-330319	△ D SILICON DBA10B 100/1.0A
4-D319,320	ED-357754	△ D SILICON DS135D 200/1.0A
4-D321	ED-324014	D ZENER H HZ11 B1
4-D322	ED-337267	D ZENER H HZ4 A1
4-D323	ED-344280	D SILICON H GAM-01-FY2 F05
4-FL101	EH-364198	FILTER DOLBY 42B-5070-02
4-FL102	EO-356809	COIL FIX 1 100Z-121 100.00KC
4-FL201	EH-364198	FILTER DOLBY 42B-5070-02
4-FL202	EO-356809	COIL FIX 1 100Z-121 100.00KC
4-FR301	ER-200926	△ R FUSE ERD2FC 1/4W 27ROG
4-IC301	EI-361561	IC BA3402SP
4-IC302	EI-347634	IC HA12045
4-IC303	EI-337228	IC M5218L
4-J301	EJ-336905	PIN J AJC-035-ACB P 4P
4-L101,201	EO-362180	COIL FIX 3 7141 TAP 822J/332J
4-SW301	ES-361562	SW SLIDE SSCK1C 1-12-02
4-SW302	ES-361564	SW SLIDE T2088
4-TR101 to 105	ET-349705	TR 2SC2320 E,F,G
4-TR106	ET-349606	TR 2SC3382 T,U F05
4-TR107,111, 120 to 123	ET-349705	TR 2SC2320 E,F,G
4-TR124	ET-338324	TR 2SD1012-V H F05
4-TR125, 201 to 205	ET-349705	TR 2SC2320 E,F,G
4-TR206	ET-349606	TR 2SC3382 T,U F05
4-TR207,210,211 220 to 223	ET-349705	TR 2SC2320 E,F,G
4-TR224	ET-338324	TR 2SD1012-V H F05
4-TR225	ET-349705	TR 2SC2320 E,F,G
4-TR301,311	ET-349366	TR 2SC3402 F05
4-TR320,321	ET-308977	TR 2SC2274K F F05
4-TR323	ET-349272	TR 2SC3242A E,F, F05
4-TR324,325	ET-349366	TR 2SC3402 F05
4-TR326	ET-349705	TR 2SC2320 E,F,G
4-TR327	ET-349366	TR 2SC3402 F05
4-TR328	ET-310148	TR 2SD612K E,F
4-TR329	ET-308141	TR 2SC2603 G F05
4-TR330,331	ET-308472	TR 2SA1115 E,F,G F05
4-TR332	ET-308141	TR 2SC2603 G F05
4-TR333,334	ET-349366	TR 2SC3402 F05
4-TR341,342	ET-308472	TR 2SA1115 E,F,G F05

REF. NO.	PART NO.	DESCRIPTION
4-TR343	ET-349705	TR 2SC2320 E,F,G
4-TR344 to 347	ET-349366	TR 2SC3402 F05
4-TR351	ET-354083	TR 2SD1189 Q,R
4-T301	EO-349589	COIL OSC 1 32-5016-12
4-VR101,102	EV-356024	R S-FIX RVF6P01 3P 104
4-VR103	EV-353558	R S-FIX RVF6P01 3P 203
4-VR104	EV-337996	R S-FIX H RVF8P01 3P 104
4-VR201,202	EV-356024	R S-FIX RVF6P01 3P 104
4-VR203	EV-353558	R S-FIX RVF6P01 3P 203
4-VR204	EV-337996	R S-FIX H RVF8P01 3P 104
4-VR301	EV-353557	R S-FIX H RVF6P01 3P 202
4-VR302	EV-353556	R-FIX H RVF6P01 3P 102
4-VR303	EV-353557	R S-FIX H RVF6P01 3P 202
4-VR304	EV-353556	R-FIX H RVF6P01 3P 102
4-F1A	EF-623103	△ FUSE SEMKO T 1.00A 250V [U,E,S]
4-F1B	EF-341264	△ FUSE GGS A 125V 1.60A [C,A]
4-F1C	EF-355226	△ FUSE BET T 1.00A 250V [B]

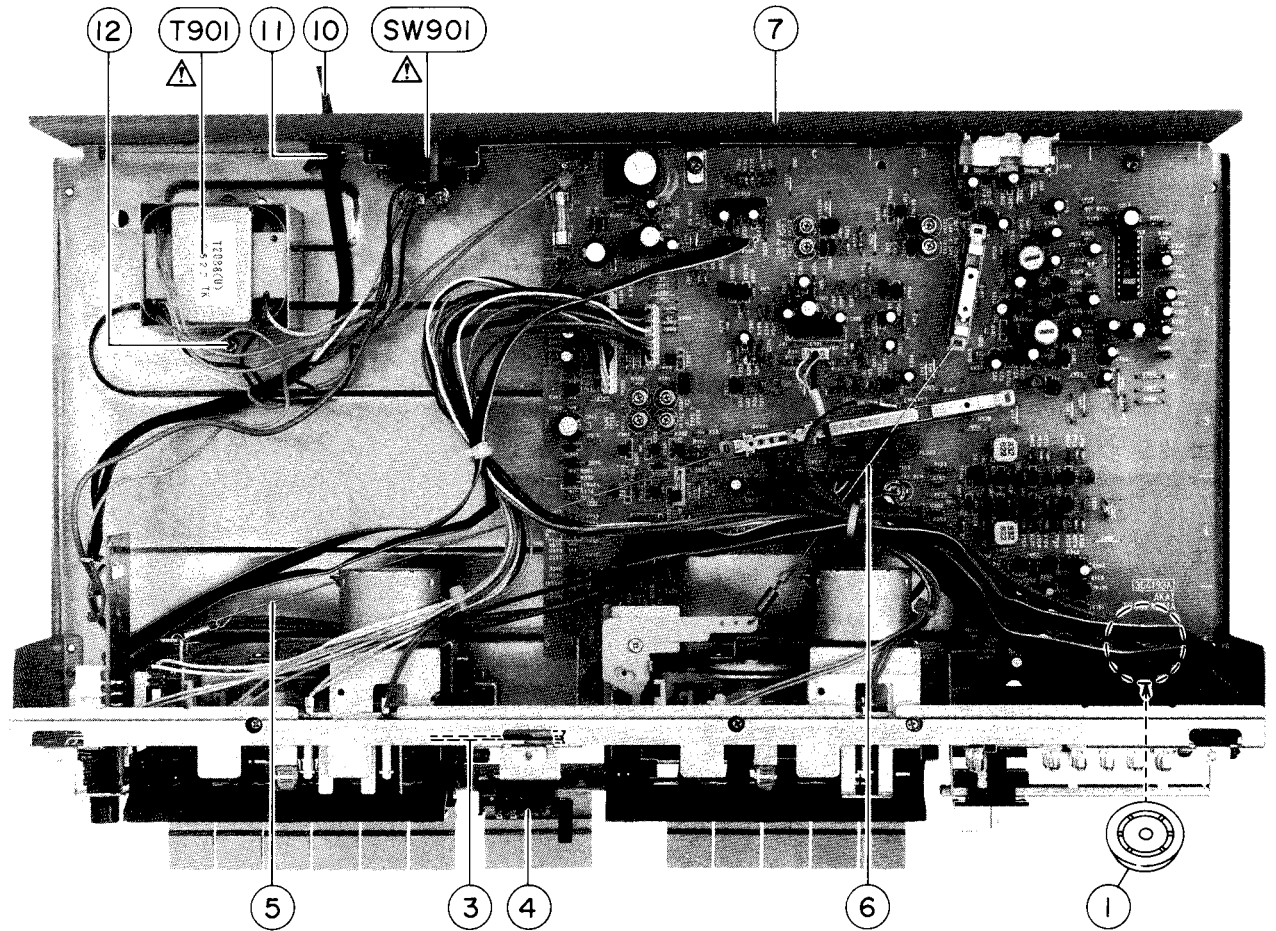
### 5. PRONT PC BOARD

REF. NO.	PART NO.	DESCRIPTION
5-D401,402	ED-364194	D LED SLH-56VT3 RED
5-D403	ED-364196	D LED SLH-56YT3 YELLOW
5-D404 to 406	ED-364197	D LED SLH-56MT3 GREEN
5-D407,408	ED-364194	D LED SLH-56VT3 RED
5-D409 to 411	ED-364197	D LED SLH-56MT3 GREEN
5-D412,413	ED-364194	D LED SLH-56VT3 RED
5-IC401	EI-355388	IC IR2E27
5-R407,408	ER-333616	R CB H S15 FS RDS 1/2W 151J
5-SW401 to 403	ES-363893	SW PUSH SPEC12
5-VR401	EV-367044	VR SLIDE VJ6014D PVN A503x2

### 6. POWER SW & HEAD PHONE PC BOARD

REF. NO.	PART NO.	DESCRIPTION
6-J501	EJ-355012	PHONE J 3P HLJ0541-010 6.3
6-SW501	ES-358646	△ SW PUSH SUL121S 1-012-02N

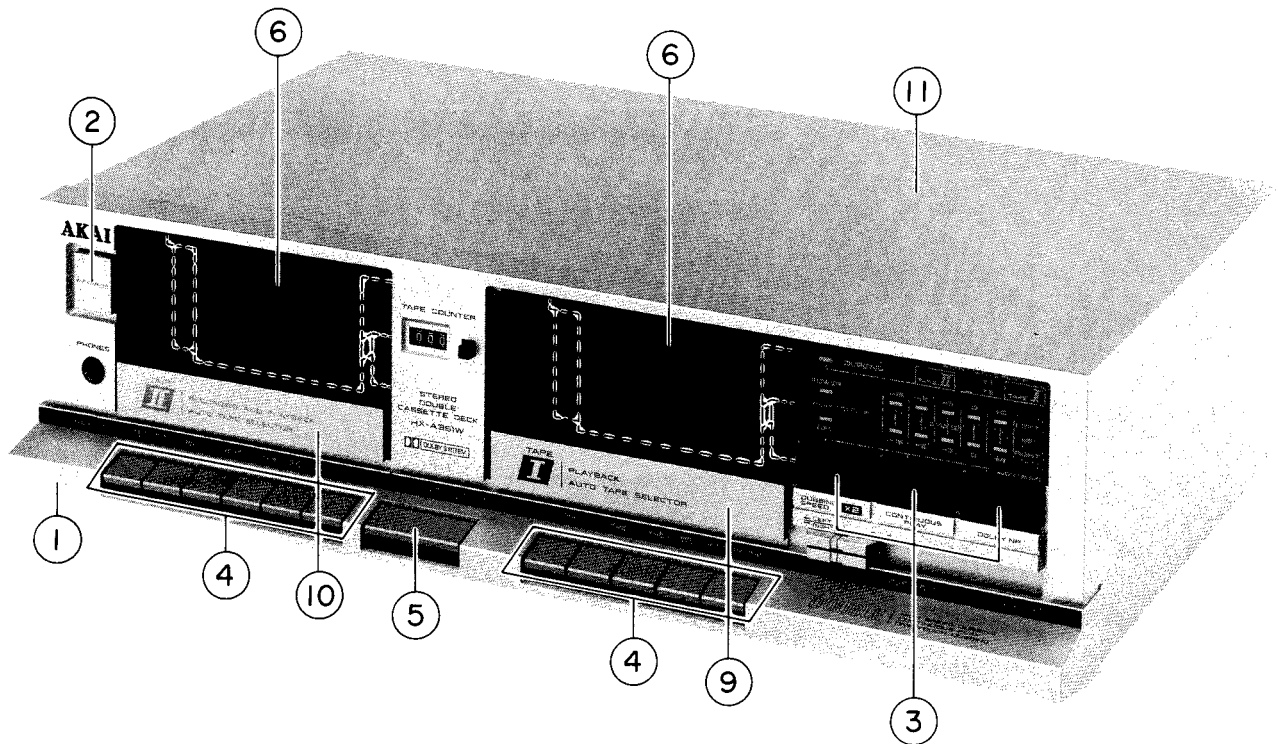
## ASSEMBLY BLOCK



### 7. ASSEMBLY BLOCK

REF. NO.	PART NO.	DESCRIPTION	REF. NO.	PART NO.	DESCRIPTION
7-1	SA-202118	FOOT	7-10D	EW-346249	△ AC CORD 2 CORES LCFL2×0.75 B [B]
7-2	ZS-356389	T2BR30×06STL CMT C080 (FOOT FIX)	7-10E	EW-347898	△ AC CORD 2 CORES VM-0436, LCFL S [S]
7-3	MB-364112	BELT 08×D65.9 CRHS65	7-11	EZ-631945	STRAIN RELIEF SR-4N-4
7-4	MC-357705	COUNTER MK395-058	7-12	ZS-300519	ST PAN 40×08STL CMT (TRANS POWER FIX)
7-5	MZ-364179	JOINT REC (JOINT REC)	7-13	ZW-413188	N40STL CMT 1 (TRANS POWER FIX)
7-6	MZ-364180	JOINT DUB (JOINT DUB)	7-14	ZS-320906	ST BR30×06STL CMT (COVER UPPER FIX)
7-7A	SP-364130A	PANEL REAR HX-A351W [U]	7-15x	EW-344151	CORD PR-61A PIN×2-PIN×2
7-7B	SP-364130B	PANEL REAR HX-A351W [C,A]	7-T901A	BT-362580	△ TRANS POWER T2088 [U]
7-7C	SP-364130C	PANEL REAR HX-A351W [E,V]	7-T901B	BT-362581	△ TRANS POWER T2088 [C,A]
7-7D	SP-364130D	PANEL REAR HX-A351W [B,S]	7-T901C	BT-362582	△ TRANS POWER T2088 [C,A]
7-8	ZS-352120	T2BR30×08STL BCM C080 (PANEL REAR FIX)	7-T901D	BT-362583	△ TRANS POWER T2088 [B,S]
7-9	ZS-362242	PT BR30×10STL BCM (PANEL REAR FIX)	7-SW901	ES-359606	△ SW SELECTOR 8T-41S0454 01-4 [U]
7-10A	EW-306428	△ AC CORD 2 CORES KP-700A, VFF U/T [U]	7-Sw501	ES-358646	△ SW PUSH SUL121S 1-012-02N
7-10B	EW-207742	△ AC CORD 2 CORES VM-0238, SPT-1 UC [C,A]			
7-10C	EW-336923	△ AC CORD 2 CORES KP-419C, LTCE-2F EV [E]			

## FINAL ASSEMBLY BLOCK



### 8. FINAL ASSEMBLY BLOCK

REF. NO.	PART NO.	DESCRIPTION
<b>PANEL FRONT PART</b>		
8-1	BD-B364109A	PANEL FRONT PART
8-1-B	BD-B364109B	PANEL FRONT-B PART (FOOT FIX)
<b>FINAL ASSEMBLY BLOCK</b>		
8-2	SK-343017G	KNOB POWER
8-2-B	SK-343017F	KNOB POWER-B
8-3	SK-364114	KNOB FUNCTION (JOINT REC)
8-4	SK-364117A	KNOB OPERATION (JOINT DUB)
8-4-B	SK-364117B	KNOB OPERATION-B
8-5	SK-364115A	KNOB DUBBING
8-5-B	SK-364115B	KNOB DUB-B
8-6	SZ-364113	LID DECORATION PLATE
8-7	SZ-357722	REFLECTOR (PANEL REAR FIX)
8-8	SK-346104	KNOB REC PART (PANEL REAR FIX)
8-9	BD-364118A	LID PANEL (1)
8-9-B	BD-364118C	LID PANEL (1)-B
8-10	BD-364118B	LID PANEL (2)
8-10-B	BD-364118D	LID PANEL (2)-B
8-11	SP-351611A-A	COVER UPPER
8-11-B	SP-351611C-A	COVER UPPER-B

#### SYMBOL FOR COLOR VARIATION

NON: STANDARD COLOR

-B: BLACK

# INDEX

## HX-A351W

PART NO.	REF. NO.	PART NO.	REF. NO.	PART NO.	REF. NO.	PART NO.	REF. NO.
BA-T2092A020A	3-1	EI-355388	5-IC401	EV-337996	4-VR104	SK-364117A	9-4
BB-364177-B	2-1	EI-361561	4-IC301	EV-337996	4-VR204	SK-364117B	9-4-B
BB-364178-C	1-1	EJ-336905	4-J301	EV-353556	4-VR302	SP-351611A-A	9-11
BD-B364109A	9-1	EJ-355012	6-J501	EV-353556	4-VR304	SP-351611C-A	9-11-B
BD-B364109B	9-1-B	EO-349589	4-T301	EV-353557	4-VR301	SP-364130A	8-7A
BD-364118A	9-9	EO-356809	4-FL102	EV-353557	4-VR303	SP-364130B	8-7B
BD-364118B	9-10	EO-356809	4-FL202	EV-353558	4-VR103	SP-364130C	8-7C
BD-364118C	9-9-B	EO-362180	4-L101	EV-353558	4-VR203	SP-364130D	8-7D
BD-364118D	9-10-B	EO-362180	4-L201	EV-356024	4-VR101	SZ-357722	9-7
BF-712807	1-37	ER-200926	4-FR301	EV-356024	4-VR102	SZ-364113	9-6
BF-712807	2-37	ER-333616	5-R407	EV-356024	4-VR201	TC-712810	1-43
BL-712799	1-28	ER-333616	5-R408	EV-356024	4-VR202	TC-712810	2-43
BL-712799	2-28	ES-358646	7-SW501	EV-367044	5-VR401	TC-712811	1-44
BM-715942	1-M901	ES-359606	8-SW901	EW-207742	8-10B	TC-712811	2-44
BM-715942	2-M902	ES-361562	4-SW301	EW-306428	8-10A	TC-712823	1-85
BR-715918	1-29	ES-361564	4-SW302	EW-336923	8-10C	TC-712823	2-85
BR-715918	2-29	ES-363893	5-SW401	EW-344151	8-15X	ZG-712816	1-45
BR-715919	1-30	ES-363893	5-SW402	EW-346249	8-10D	ZG-712816	2-45
BR-715919	2-30	ES-363893	5-SW403	EW-347898	8-10E	ZG-712822	1-79
BT-362580	8-T901A	ES-713179	1-SW906	EZ-631945	8-11	ZG-712822	2-79
BT-362581	8-T901B	ES-715944	1-SW905	HE-337047	1-H902	ZG-715922	1-128
BT-362582	8-T901C	ES-715944	1-SW904	HP-712824	1-H901	ZG-715922	2-128
BT-362583	8-T901D	ES-715944	2-SW908	HP-712824	2-H903	ZG-715940	1-75
EC-306017	4-C101	ES-716680	1-SW902	HZ-716172	1-27	ZG-715940	2-75
EC-306017	4-C201	ES-749290	1-SW903	HZ-716172	2-27	ZG-716187	1-67
EC-314992	4-C123	ES-749290	2-SW907	MB-364112	8-3	ZG-716187	2-67
EC-314992	4-C223	ET-308141	4-TR329	MB-712818	1-57	ZG-716188	1-68
EC-315768	4-C120	ET-308141	4-TR332	MB-712818	2-57	ZG-716188	2-68
EC-315768	4-C220	ET-308472	4-TR330	MB-715936	1-55	ZG-716189	1-69
EC-324109	4-C102	ET-308472	4-TR331	MB-715936	2-55	ZG-716189	2-69
EC-324109	4-C202	ET-308472	4-TR342	MB-715939	1-59	ZG-716190	1-70
EC-324662	4-C347	ET-308472	4-TR341	MB-715939	2-59	ZG-716190	2-70
EC-334071	4-C103	ET-308977	4-TR321	MB-716683	1-58	ZG-716193	1-78
EC-334071	4-C203	ET-308977	4-TR320	MB-716683	2-58	ZG-716193	2-78
EC-349631	4-C330	ET-310148	4-TR328	MC-357705	8-4	ZG-716194	1-80
EC-562678	4-C121	ET-338324	4-TR124	MI-712812	1-46	ZG-716194	2-80
EC-562678	4-C221	ET-338324	4-TR224	MI-712812	2-46	ZG-716197	1-82
ED-301911	4-D306	ET-349272	4-TR323	MI-712817	1-56	ZG-716197	2-82
ED-324014	4-D321	ET-349366	4-TR311	MI-712817	2-56	ZG-716355	1-81
ED-330319	4-D318	ET-349366	4-TR301	MI-715920	1-49	ZG-716355	2-81
ED-337267	4-D322	ET-349366	4-TR324	MI-715920	2-49	ZG-716579	1-77
ED-344280	4-D301	ET-349366	4-TR325	MI-715935	1-32	ZG-716579	2-77
ED-344280	4-D303	ET-349366	4-TR327	MI-715935	2-32	ZG-716685	1-62
ED-344280	4-D305	ET-349366	4-TR333	ML-712806	1-36	ZG-716685	2-62
ED-344280	4-D304	ET-349366	4-TR334	ML-712809	1-40	ZG-716686	1-72
ED-344280	4-D302	ET-349366	4-TR344	ML-712809	2-40	ZG-716686	2-72
ED-344280	4-D307	ET-349366	4-TR345	ML-716175	1-38	ZG-716687	1-73
ED-344280	4-D308	ET-349366	4-TR346	ML-716175	2-38	ZG-716687	2-73
ED-344280	4-D309	ET-349366	4-TR347	ML-716179	1-50	ZG-716688	1-83
ED-344280	4-D311	ET-349606	4-TR106	ML-716179	2-50	ZG-716688	2-83
ED-344280	4-D312	ET-349606	4-TR206	ML-716180	1-51	ZS-300519	8-12
ED-344280	4-D313	ET-349705	4-TR101	ML-716180	2-51	ZS-320906	8-14
ED-344280	4-D314	ET-349705	4-TR102	MS-715941	2-93	ZS-352120	8-8
ED-344280	4-D310	ET-349705	4-TR103	MZ-364179	8-5	ZS-356389	8-2
ED-344280	4-D316	ET-349705	4-TR104	MZ-364180	8-6	ZS-362242	8-9
ED-344280	4-D317	ET-349705	4-TR105	MZ-711710	1-35	ZS-536488	1-112
ED-344280	4-D323	ET-349705	4-TR107	MZ-711710	2-35	ZS-536488	2-112
ED-349662	4-D315	ET-349705	4-TR110	MZ-712804	1-33	ZS-715982	1-87
ED-357754	4-D319	ET-349705	4-TR111	MZ-712804	2-33	ZS-715982	2-87
ED-357754	4-D320	ET-349705	4-TR120	MZ-712808	1-39	ZS-716203	1-88
ED-364194	5-D407	ET-349705	4-TR121	MZ-712808	2-39	ZS-716203	2-88
ED-364194	5-D408	ET-349705	4-TR122	MZ-712813	1-47	ZS-716204	1-89
ED-364194	5-D412	ET-349705	4-TR123	MZ-712813	2-47	ZS-716204	2-89
ED-364194	5-D413	ET-349705	4-TR201	MZ-712814	1-48	ZS-716576	1-118
ED-364194	5-D401	ET-349705	4-TR202	MZ-712814	2-48	ZS-716576	2-118
ED-364194	5-D402	ET-349705	4-TR125	MZ-716171	1-26	ZS-749293	1-113
ED-364196	5-D403	ET-349705	4-TR204	MZ-716171	2-26	ZS-749293	1-114
ED-364197	5-D409	ET-349705	4-TR203	MZ-716577	1-60	ZS-749293	2-113
ED-364197	5-D410	ET-349705	4-TR205	MZ-716577	2-60	ZS-749293	2-114
ED-364197	5-D411	ET-349705	4-TR210	MZ-749256	1-34	ZW-413188	8-13
ED-364197	5-D404	ET-349705	4-TR211	MZ-749256	2-34	ZW-716181	1-52
ED-364197	5-D405	ET-349705	4-TR220	SA-202118	8-1	ZW-716181	2-52
ED-364197	5-D406	ET-349705	4-TR207	SB-716178	1-41	ZW-716206	1-101
EF-321264	4-F1B	ET-349705	4-TR222	SB-716178	2-41	ZW-716206	2-101
EF-355226	4-F1C	ET-349705	4-TR221	SK-343017F	9-2-B		
EF-623103	4-F1A	ET-349705	4-TR223	SK-343017G	9-2		
EH-364198	4-FL101	ET-349705	4-TR225	SK-346104	9-8		
EH-364198	4-FL201	ET-349705	4-TR326	SK-364114	9-3		
EI-337228	4-IC303	ET-349705	4-TR343	SK-364115A	9-5		
EI-347634	4-IC302	ET-354083	4-TR351	SK-364115B	9-5-B		

## ABBREVIATIONS FOR SERVICE MANUAL (CASSETTE)

Abbreviation	Explanation	Abbreviation	Explanation
AC	Alternating Current	MIN	MINute
A/D	Analog/Digital	MML	Maximum Modulation Level
AF	Auto Fader	MOL	Maximum Output Level
AMP	AMPLifier	MPX	Multi PleX
AR	Anti Recording	NC	Not Connected (No Connection)
AT BIAS	Auto Tuning BIAS	NFB	Negative Feed Back
ATT	ATTenuator	NORM	NORMAL
BAL	BALance	NR	Noise Reduction
BEF	Band Elimination Filter	OSC	OSCillator (OSCillation)
BSS	Blank Search System	P	Pulse
CAP M	CAPsTan Motor	PB	Play Back
CH	CHannel	QMSS	Quick Memory Search System
COMP	COMParator	QR	Quick Reverse
CONT	CONTinuance	R CH	Right CHannel
CRLP	Computer Recording Level Process- ing	REC	RECORD (RECORDing)
CS	Chip Select	REV	REVERSE
D/A	Digital/Analog	ROT	ROTation
DC	Direct Current	REW	REWind
DET	DETECTOR	SEC	SECond
DISCRI	DISCRIminator	SELE	SELEctor
DUB	DUBbing	SENS	SENSitivity
EQ	EQUALizer	SEPP	Single Ended Push Pull
FF(or F.FWD)	Fast Forward	SIG	SIGNAL
FLD	FLuorescent Display	SPECT	SPECTrum
FREQ	FREQuency	STD	STANdard
FWD	FORWard	SW	SWitch
GND	GROUNd	SYSCON	SYStem CONtrol
H	High	TP	Test Point
HPF	High Pass Filter	TRIG	TRIGa
IND	INDicator	VCA	Voltage Control Attenuator
IPLS	Instant Program Location System	VOL	VOLUME
L	Low	VOLT	VOLTage
L CH	Left CHannel	VR	Variable Resistor
LED	Light Emitting Diode	X'TAL	cysTAL
MEMO	MEMOry	X1	Normal speed
MICOM	MIcroCOMputer	X2	Dubble speed

## AKAI ELECTRIC CO., LTD.

12-14, 2-Chome, Higashi-Kojiya, Ohta-Ku, Tokyo, Japan

TEL: Tokyo (742) 5111 CABLE: HIFIAKAI TOKYO TELEX: J26261

Printed No. 860714-G1-3000

Printed Date: July 14, 1986

Printed in Japan



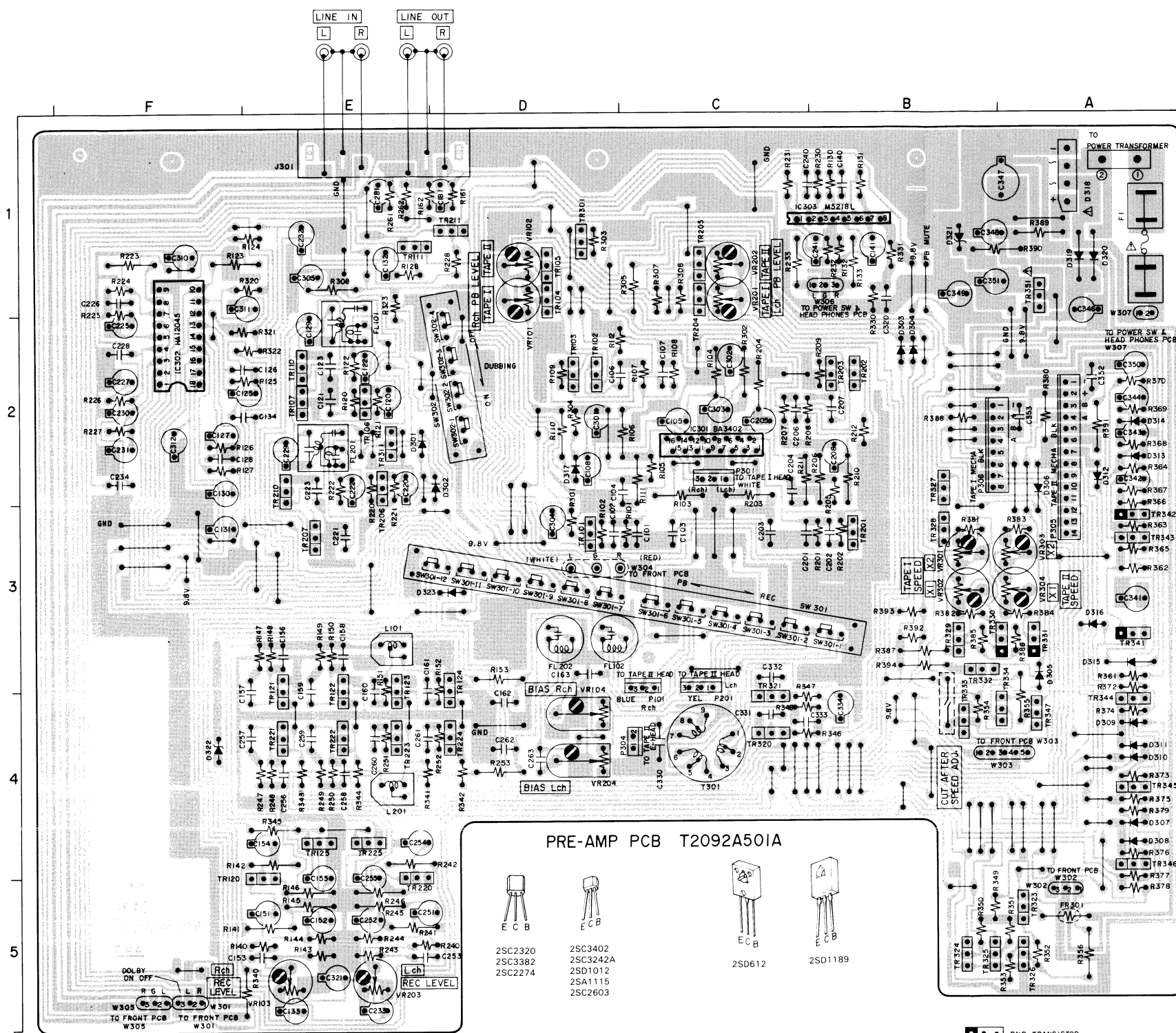
# **AKAI**

## **MODEL HX-A351W**

### **SCHEMATIC DIAGRAM AND PC BOARDS**

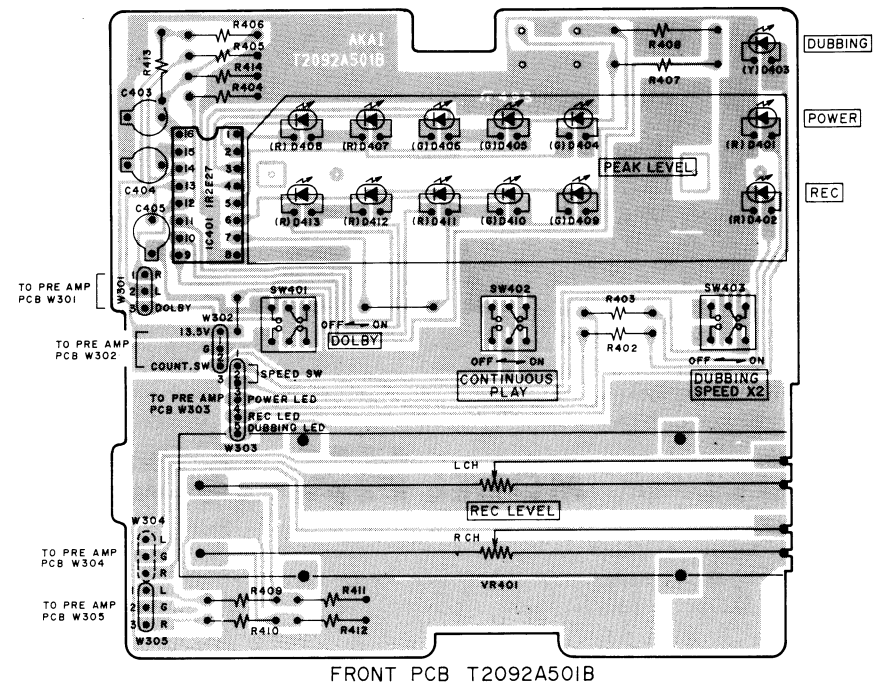
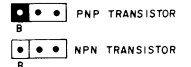
#### **TABLE OF CONTENTS**

1. PRE AMP PCB, FRONT PCB, POWER SW & HEAD PHONE PCB .....	2
2. SCHEMATIC DIAGRAM.....	3
3. BLOCK DIAGRAM .....	4

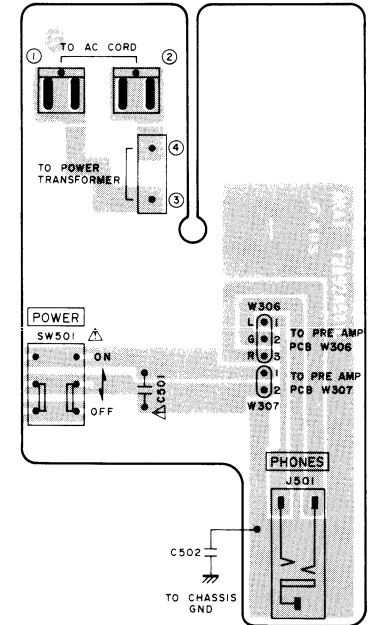


LOCATION OF COMPONENTS

IC'S	TR'S	RESISTORS	TRANSISTORS
IC301 ..... C2	TR101 ..... D3	TR204 ..... C1	TR223 ..... E4
IC302 ..... F2	TR102 ..... D2	TR205 ..... C1	TR224 ..... B4
IC303 ..... B1	TR103 ..... D2	TR206 ..... E2	TR225 ..... E4
	TR104 ..... D1	TR207 ..... E3	TR301 ..... D1
	TR105 ..... D1	TR110 ..... E2	TR311 ..... E2
	TR106 ..... E2	TR111 ..... D1	TR320 ..... C4
	TR107 ..... E2	TR220 ..... E5	TR321 ..... C4
	TR110 ..... E2	TR221 ..... E4	TR322 ..... A5
	TR111 ..... E1	TR222 ..... B2	TR323 ..... A5
		TR223 ..... E4	TR324 ..... B5
			TR325 ..... B5
			TR326 ..... A5
			TR327 ..... B2
			TR328 ..... B3
			TR329 ..... B3
			TR330 ..... B3
			TR331 ..... A3
			TR332 ..... B3
			TR333 ..... B4
			TR334 ..... A4
			TR335 ..... A4
			TR341 ..... A3
			TR342 ..... A3
			TR343 ..... A3
			TR344 ..... A4
			TR345 ..... A4
			TR346 ..... A4
			TR347 ..... A4
			TR351 ..... A1
			P101 ..... C1
			P201 ..... C1
			P301 ..... C2
			P304 ..... C4
			P305 ..... A2
			P306 ..... A2



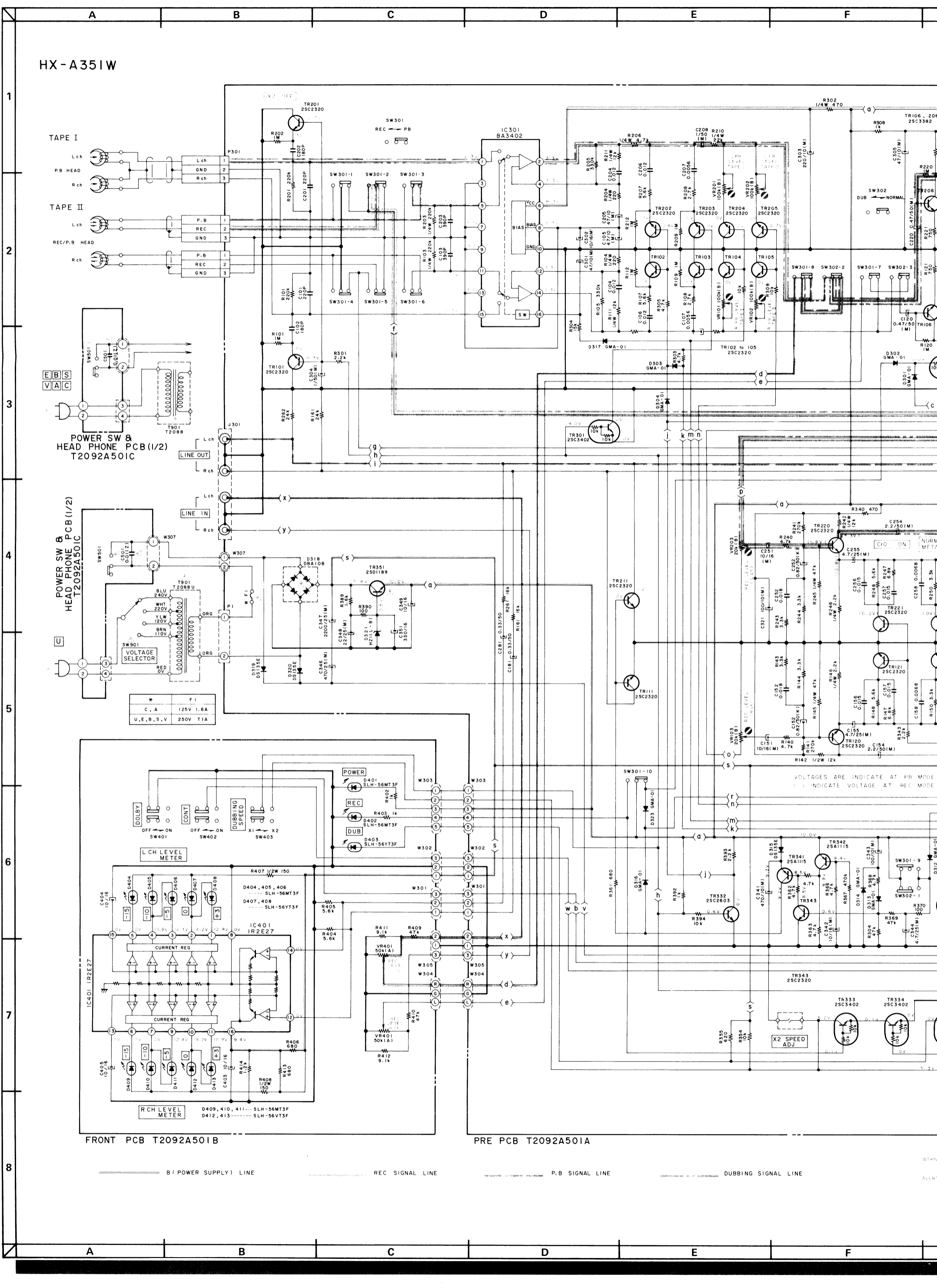
POWER SW & HEAD PHONE PCB T2092A501C



WARNING: ⚠ INDICATES SAFETY CRITICAL COMPONENTS. FOR CONTINUED SAFETY, REPLACE SAFETY CRITICAL COMPONENTS ONLY WITH MANUFACTURER'S RECOMMENDED PARTS.

AVERTISSEMENT: ⚠ INDIQUE LES COMPOSANTS CRITIQUES DE SÉCURITÉ. POUR MAINTENIR LE DEGRÉ DE SÉCURITÉ DE L'APPAREIL, NE REMPLACER QUÉ DES PIÈCES RECOMMANDÉES PAR LE FABRICANT.

# HX-A351W



* F1	F1
C, A	125V 1.6A
U, E, B, S, V	250V T1A

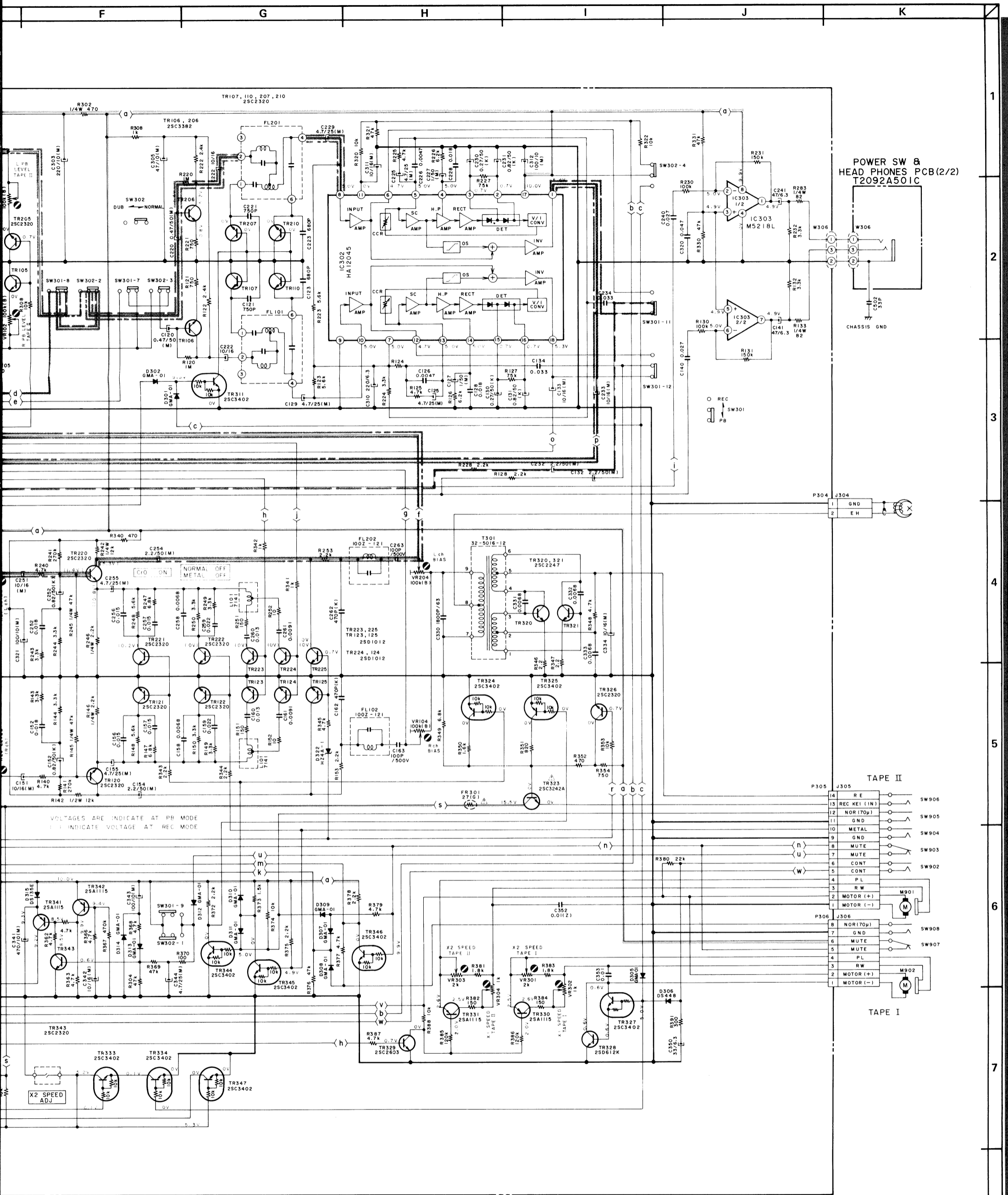
VOLTAGES ARE INDICATE AT PB MODE  
INDICATE VOLTAGE AT REC MODE

FRONT PCB T2092A501B

PRE PCB T2092A501A

BI POWER SUPPLY LINE      REC SIGNAL LINE      P.B SIGNAL LINE      DUBBING SIGNAL LINE

WARNING  
CAUTION  
DANGER



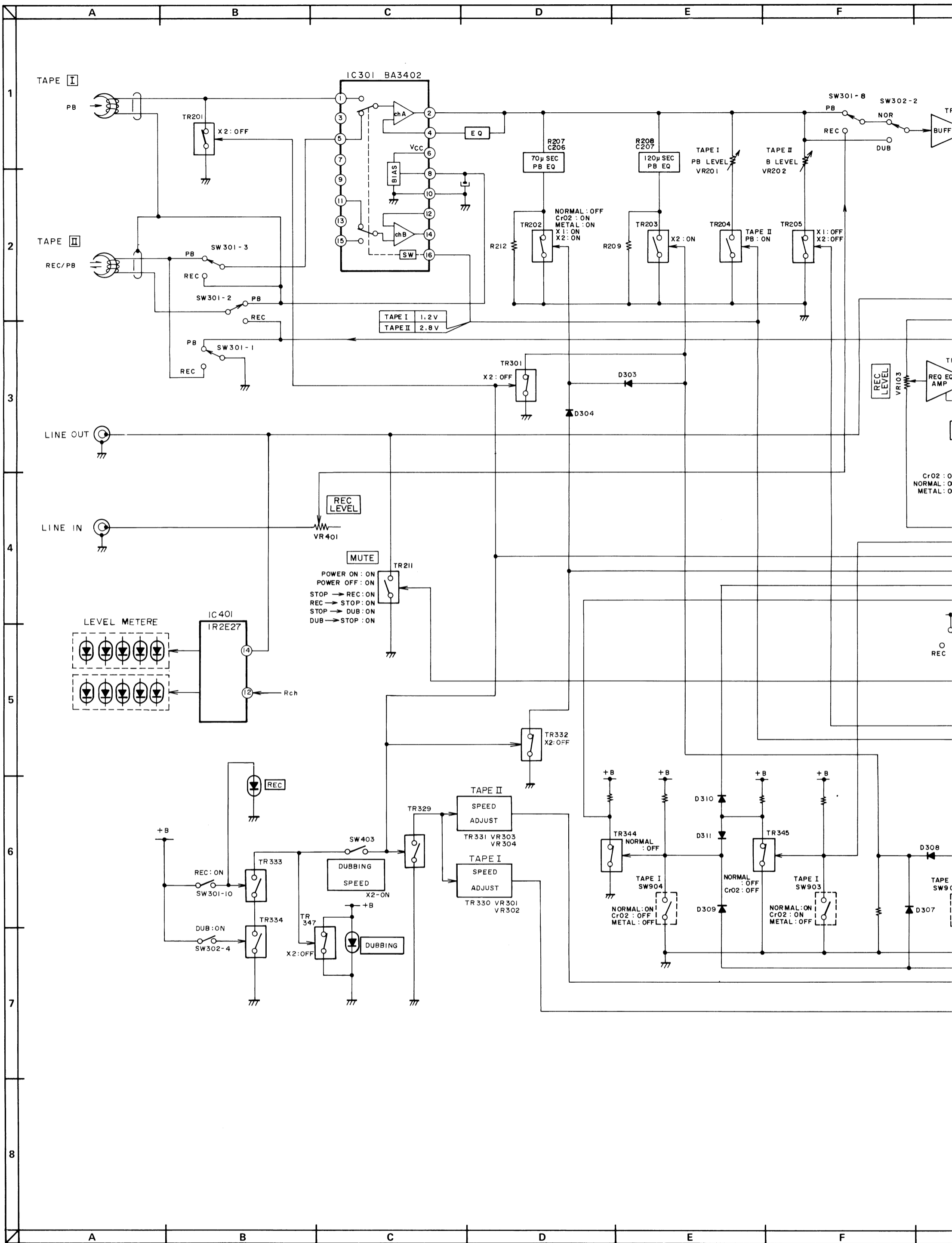
VOLTAGES ARE INDICATE AT PR MODE  
 ( ) INDICATE VOLTAGE AT REC MODE

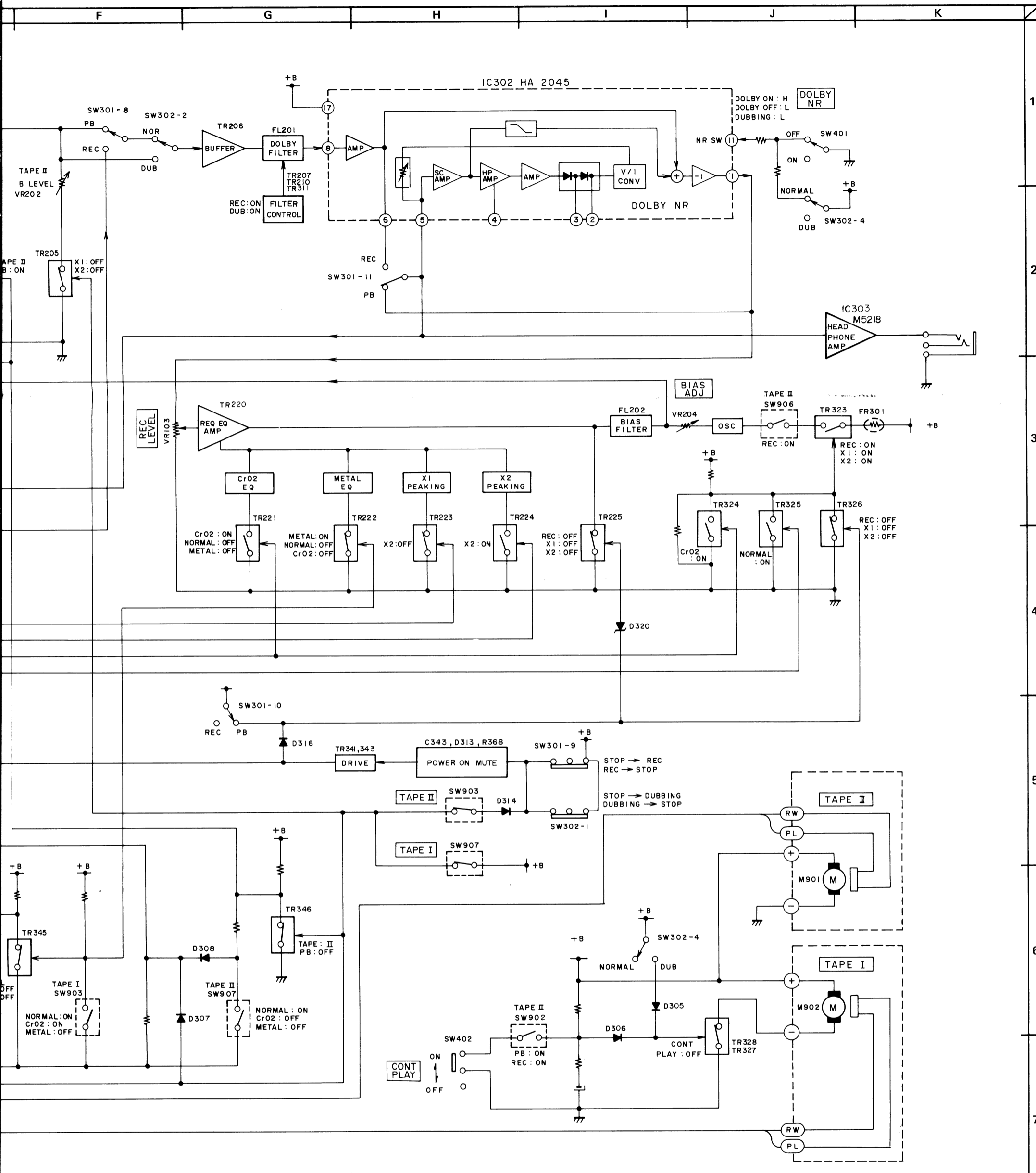
WARNING: INDICATES SAFETY CRITICAL COMPONENTS FOR CONTINUED SAFETY.  
 REPLACE SAFETY CRITICAL COMPONENTS ONLY WITH MANUFACTURER'S  
 RECOMMENDED PARTS.  
 AVERTISSEMENT: AIR INDIQUE LES COMPOSANTS CRITIQUES DE SECURITE.  
 NE REMPLACER QUE DES PIECES RECOMMANDEES PAR LE FABRICANT.

NOTE: UNLESS OTHERWISE SPECIFIED  
 ALL RESISTORS IN OHMS (Ω)  
 ALL CAPACITORS IN μF (μ)  
 POWER TRANSFORMER IS DIFFERENT  
 ACCORDING TO AREA

HX-A351W  
 SCHEMATIC DIAGRAM  
 No. 860717A

NG SIGNAL LINE





BLOCK DIAGRAM INDICATES LEFT CHANNEL CIRCUIT ONLY  
 POWER SUPPLY LINE : +B

MODE PB : PLAY BACK  
 REC : RECORDING  
 X1 : NORMAL SPEED DUBBING  
 X2 : DOUBLE SPEED DUBBING

HX-A351W  
 BLOCK DIAGRAM  
 No. 860716A (A2)