

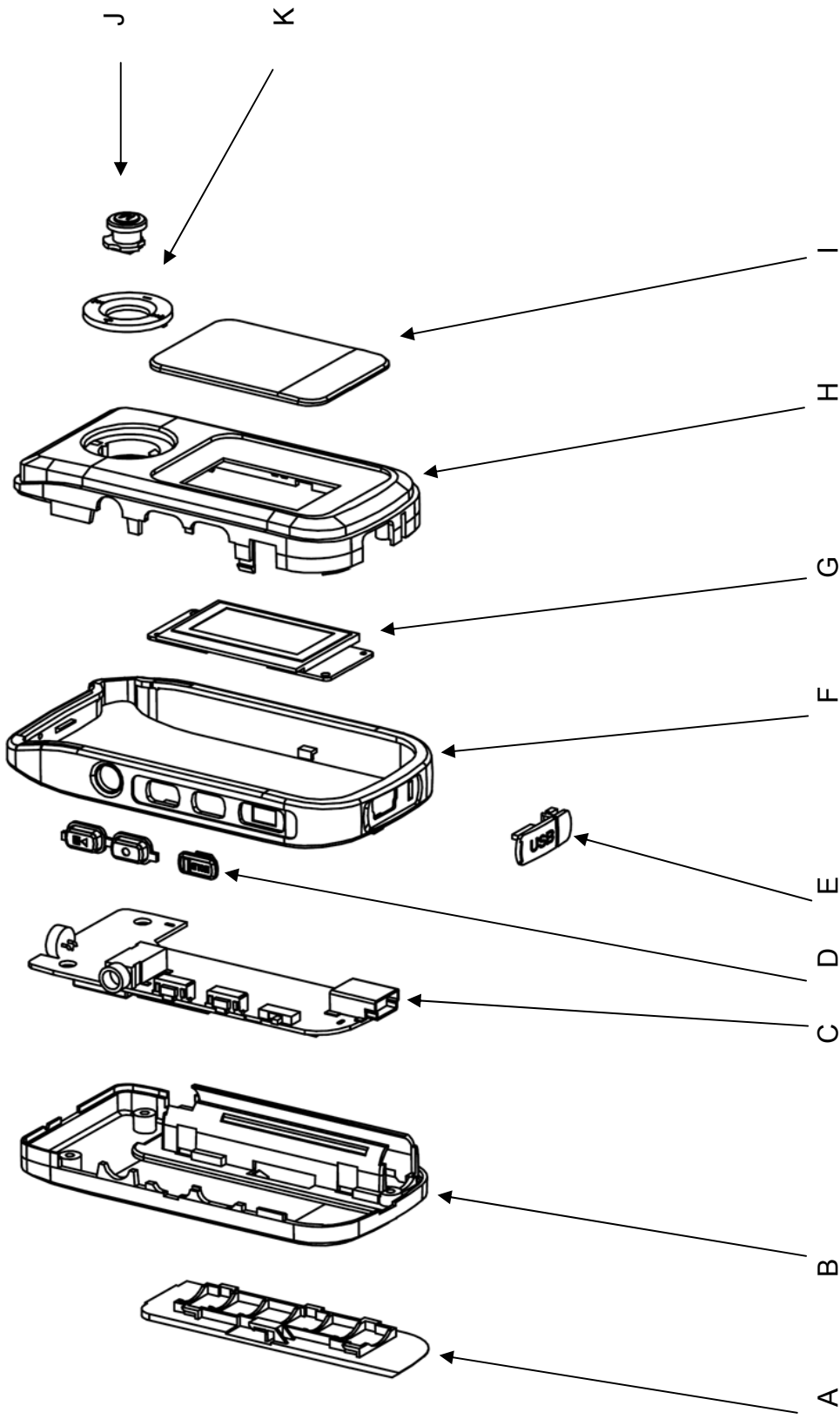


**AKAI**

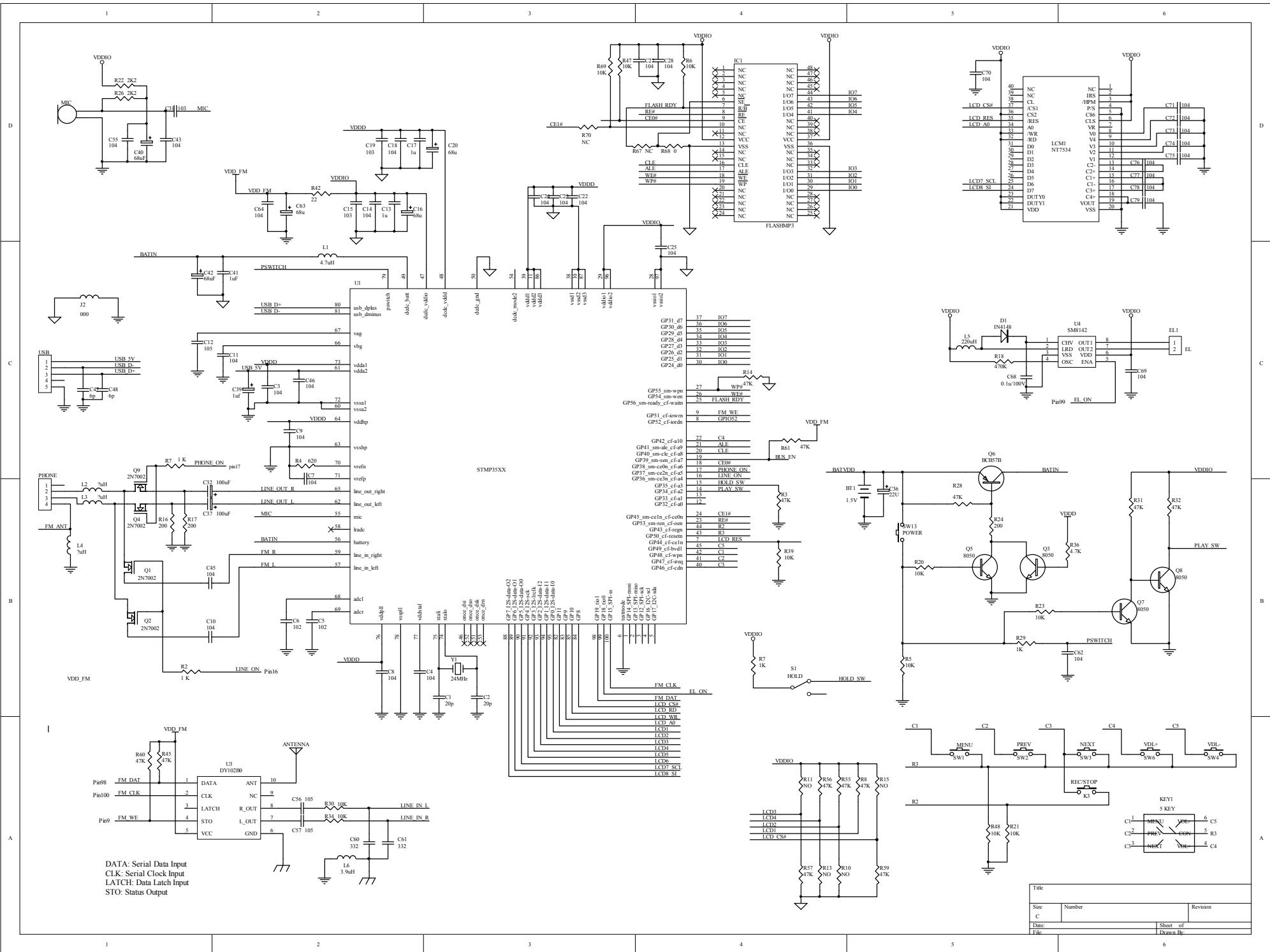
**MP3 PLAYER**

Model:  
MP-1700RC

**SERVICE MANUAL**



A	Battery cover	G	LCD mirror
B	Bottom panel	H	Front panel
C	PCB board	I	Flash mirror
D	Side buttons	J	Navigation button
E	Hold button	K	Decoration piece
F	Middle panel		



Title			
Size	Number	Revision	
Date		Sheet of	
Drawn by		Drawn by	

Model: MP-1700RC

Product description: STMP3506+FLASH MP3+FM+OLED

FROM: R&D

PREPARED BY :

CHECKED BY:

APPROVED BY:

NO	PT NR	DESCRIPTION	SPECIFICATION	QTY.	LOCATION	REMARK
1	115-YR70015-5	PCB	39*15*0.6mm NO : L050606V1	1	SY-R700OLEDM	2 LAYTER
2	115-YR70015-1	PCB	66.5*32.5*0.8mm NO : M050606V1	1	SY-R700 MAIN(OLED)	4 LAYTER
3	105-***FM350-1	FM MODUEL	FM-350 ( 11.5*11.5*2.5mm)	1	L14	FM module
4	105-STMP3506-1	IC	STMP3506 ( 或STM3502 \3505\3520) (TQFP 100PIN)	1	U1	
5	105-K9K1G08U-1	IC	K9K1G08UOM-YCBO (128MB)	1	IC1	SAMSUNG
6	105-*AIC1896-1	IC	AIC1896 SOT-23-6	1	U4	OLED driving IC
7	116-1RGS1012-0	OLED	RGS101280640W000 SSD1303	1	LCM1	Display module
8	101-40000156-0	SMT resistor	0 ohm +/-5% 25v 1/10W 0603	4	J2,R1,R9, L8	
9	101-42200156-0	SMT resistor	22 ohm +/-5% 25v 1/10W 0603	1	R42	
10	101-41510156-0	SMT resistor	150 ohm +/-5% 25v 1/10W 0603	1	R24	
11	101-42010156-0	SMT resistor	200 ohm +/-5% 25v 1/10W 0603	2	R16,R17	
12	101-46210156-0	SMT resistor	620 ohm +/-1% 25v 1/10W 0603	1	R4	
13	101-41020156-0	SMT resistor	1 K ohm +/-5% 25v 1/10W 0603	3	R7,R2 R10	
14	101-42220156-0	SMT resistor	2K2 ohm +/-5% 25v 1/10W 0603	2	R22 R26	
15	101-44720156-0	SMT resistor	4K7 ohm +/-5% 25v 1/10W 0603	3	R36,R62,R66	
16	101-41030156-0	SMT resistor	10K ohm +/-5% 25v 1/10W 0603	9	R5 R6, R20 R21 R30 R34 R47 R48 ,R19	
17	101-42030156-0	SMT resistor	20K ohm +/-5% 25v 1/10W 0603	1	R29	
18	101-44730156-0	SMT resistor	47K ohm +/-5% 25v 1/10W 0603	13	R3,R8,R14,R45,R55 R56 R57 R59 R60 R61,R23,R31,R32	
19	101-46830156-0	SMT resistor	68K ohm +/-5% 25v 1/10W 0603	1	R12	
20	101-41040156-0	SMT resistor	100K ohm +/-5% 25v 1/10W 0603	1	R28	
21	101-43940156-0	SMT resistor	390K ohm +/-5% 25v 1/10W 0603	1	R18	
22	101-49140156-0	SMT resistor	910K ohm +/-5% 25v 1/10W 0603	1	R38	
23	102-62006204-0	SMT capacitor	20PF (+/- 2PF 16V 0603)	2	C1 C2	
25	102-61026304-0	SMT capacitor	1000PF (+/-10% 16V 0603)	3	C5,C6,C43	
26	102-61036304-0	SMT capacitor	0.01UF (+/-10% 16V 0603)	4	C15,C19,C31,C66	
27	102-63326304-0	SMT capacitor	0.0033UF (+/-10% 16V 0603)	3	C60 C61 C70	
28	102-61046504-0	SMT capacitor	0.1UF (+80/-20% 16V0603)	21	C3,C4,C7,C8,C9,C11,C14,C18,C22,C23,C24,C25,C27,C28,C55,C64,C68,C72,C73,C10,C45	
29	102-61056504-0	SMT capacitor	1UF (+80/-20% 16V 0603)	9	C12,C13,C17,C41,C56,C57,C62,C67,C39	
30	102-41061508-0	SMT Polarity capacitor	10UF/16V +80/-20% (2012)	1	C69	
31	102-42261508-0	SMT Polarity capacitor	22UF/6.3V +80/-20% (2012)	2	C36,C40	
32	102-44761509-0	SMT Polarity capacitor	47UF/6.3V +80/-20% (3216)	3	C42,C63,C71	
33	102-46861510-0	SMT Polarity capacitor	68UF/6.3V +80/-20% (3528)	2	C16,C20	
34	102-41071510-0	SMT Polarity capacitor	100UF/6.3V +80/-20% (3528)	2	C32, C37	
35	104-1IN41480-1	Diode	IN4148 Cylindrical SMD	1	D1	
36	103-FMMT7171-4	Transistor	FMMT717 SOT-23	1	Q6	PNP
37	103-MBT22221-3	Transistor	MMBT2222A SOT-23	4	Q3 ,Q5 Q7 Q8	NPN
38	103-SF230601-5	Chip Inductor	SF2306	4	Q1,Q2,Q9 Q4	N-MOS
39	111-13910307-A	Coil inductor	10UH 3.2(L)*2.6(W)*2.2(H) mm	1	L5	
40	111-10470307-A	Coil inductor	4.7UH 3.2(L)*2.6(W)*2.2(H) mm	1	L1	
41	111-10039301-C	Coil inductor	390NH/100MHZ 600@ 0603	4	L2 L3 L4 L6	
42	106-32400006-4	Crystal Oscillator	24 MHZ 2*6MM	1	Y1	
43	112-20PJ3260-1	Ear phone jack	Tri pedal slice $\Phi$ =3.5 PJ-326	1	P8	
44	108-16080025-2	FPC flat line	16Pin/0.8mm*25mm	1	connecting the MPEG board CN2 and LCD display board CN1	
45	109-1SK12001-1	Slide switch	Locked switch , slice, resistable high temperature SK-12001	1	S1	
46	109-1TS0705W-1	Navigation button in five direction	TS0705W0-V50C-02 (SMD7.5*7.5*5.7)	1	KEY1	
47	109-1TS7035P-1	tact switch	TS70-35PSM200	4	SW13,SW2	
48	114-2450B006-0	Microphone	DIP $\Phi$ =6*H2.5mm	1	MIC1	
49	112-4USB0400-1	USB port	5PIN SMD (USB-0400)	1	USB1	
63	120-0KA14030-4	PCB fixed screw	KB1.4*3.0	2		
64	120-0PA14070-4	Fixed screw for the cabinets	PA1.4*7(diameter:2.3mm)	3		
<b>Structural parts:</b>						
50	000-70001101-1	Front panel	ABS	1		
51	000-70002101-1	Middel panel	ABS	1		
52	000-70003101-1	Bottom panel	ABS	1		
53	000-70010101-1	Battery cover	ABS	1		

Model: MP-1700RC

Product description: STMP3506+FLASH MP3+FM+OLED

FROM: R&D

PREPARED BY :

CHECKED BY:

APPROVED BY:

NO	PT NR	DESCRIPTION	SPECIFICATION	QTY.	LOCATION	REMARK
58	000-70004507-2	flash mirror	AS	1		
54	000-70005101-1	Side buttons	ABS	1		
55	000-70026101-1	Hold button	ABS	1		
56	000-70006101-1	Decorative panel for Navigation buttons	ABS	1		
57	000-70024101-1	Navigation button	ABS	1		
59	000-70036101-1	USB dustproof cover	Synthetic rubber	1		
60	119-R7000501-3	Battery spring slice in Positive	Spring plating	1		
61	119-R7000502-3	Battery spring slice in Negative	Spring plating	1		
77	122-YR700000-1	Istruction manual		1		
80	132-YR700000-1	Warranty card		1		
78	121-SYR70021-1	Gift box		1		
64	134-YR700221-0		Suck Box BOTTOM PM520	1		
65	134-YR700222-0		Suck Box COVER PM520	1		
81	135-0AAA3116-0	Battery	Alkaline battery AAA	1		
67	128-S0403304-0	USB cable	USB CORD BIG 5P&5PIN YTDUS04-033 1.1M	1		
83	113-SX370503-0	Earphone	SX-3705-03 32ohm 25MW	1		
69	134-00015002-0	QC PASS label	QC PASS R=15MM &R=8MM	1		
70	123-SYR70007-0	Serial no. label	NO. LABEL	1		
71	124-SYR700001-1	Master Carton	EXPORT CARTON	1		
72	143-SYR70021-0	Software disk	8.0 CM DICS	1		