

Allied Radio Corp.

Model: A 10500

Chassis:

Year: Pre August 1939

Power:

Circuit:

IF:

Tubes:

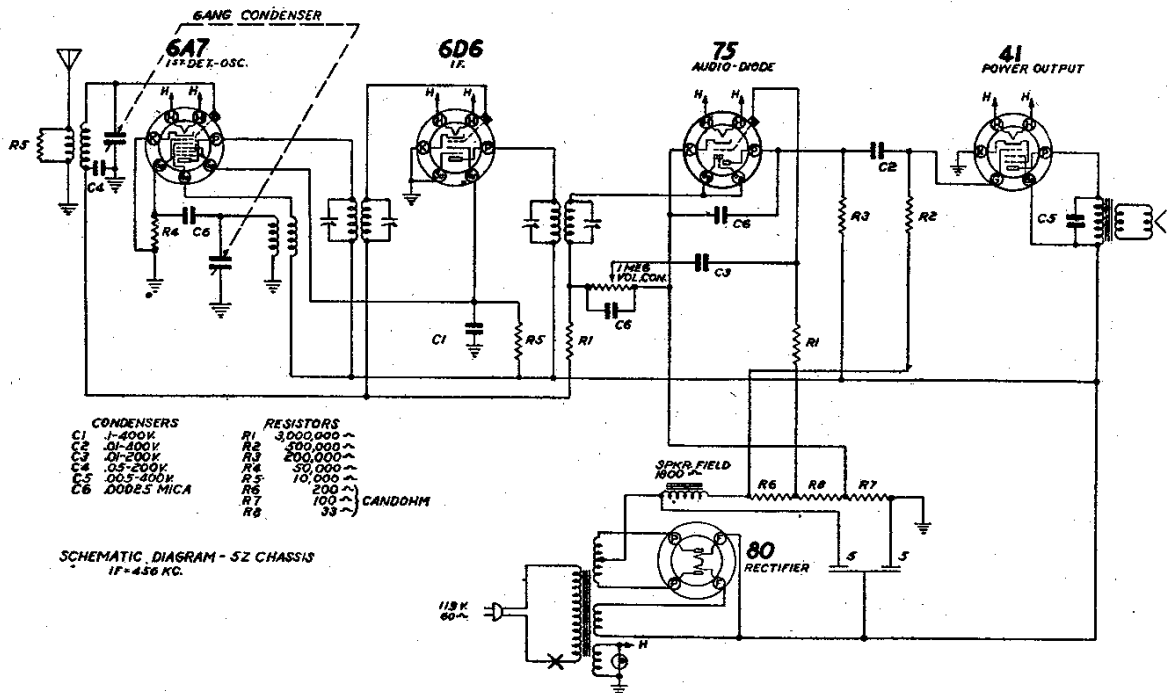
Bands:

Resources

Riders Volume 10 - ALLIED 10-10

MODELS A-10500, A-10501
 Chassis 5Z
 Schematic, Socket, Trimmers
 Alignment

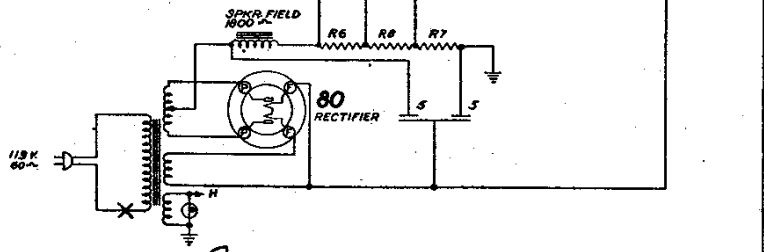
ALLIED RADIO CORP.



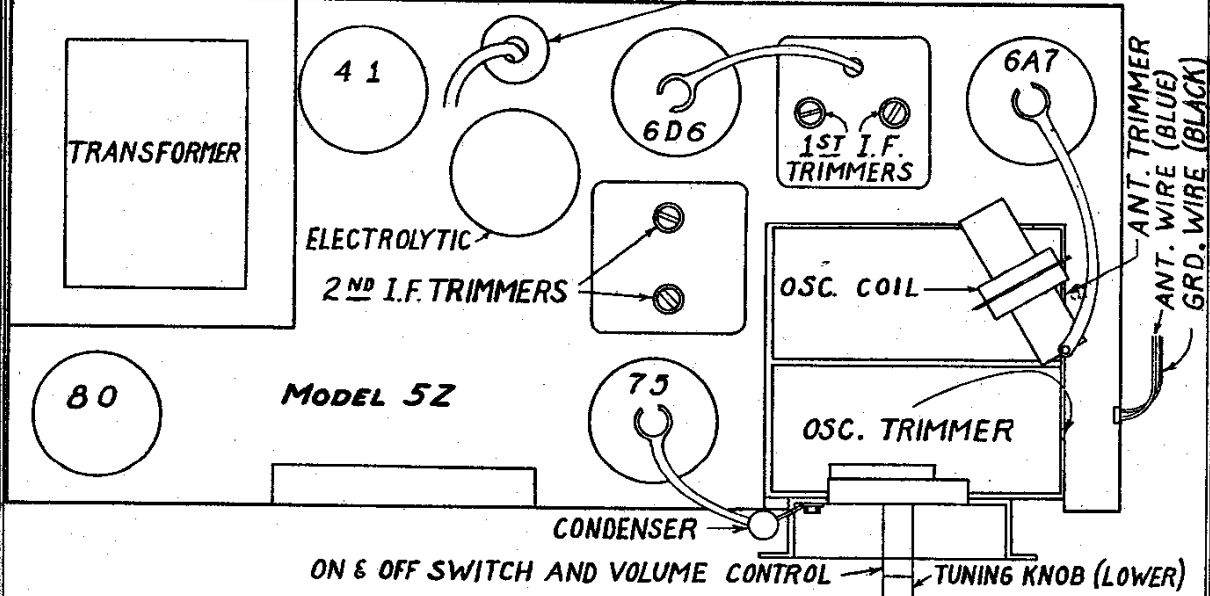
CONDENSERS		RESISTORS	
C1	J-400V	R1	3,000,000 ~
C2	0.1-400V	R2	500,000 ~
C3	0.1-200V	R3	200,000 ~
C4	0.5-200V	R4	50,000 ~
C5	0.05-400V	R5	10,000 ~
C6	DOUGES MICA	R6	200 ~
		R7	100 ~
		R8	33 ~

CANDOHM

SCHEMATIC DIAGRAM - 5Z CHASSIS
 IF-450 KC.



A.C. CORD & PLUG
 SPEAKER SOCKET & PLUG



ALIGNMENT DATA

IF ALIGNMENT - Wave switch on B.C. position. Generator connected to grid of 6A7 tube through a .05 MFD Cond. Align four trimmers.

BROADCAST - Connect generator to ANT. lead (blue) through a 200 MFD cond. Gang condenser at minimum, generator set at 1750 KC, adj. OSC. trimmer to peak. Set generator to 1400 KC and adjust ANT. trimmer to peak. Generator and receiver set to 600. KC. Rock