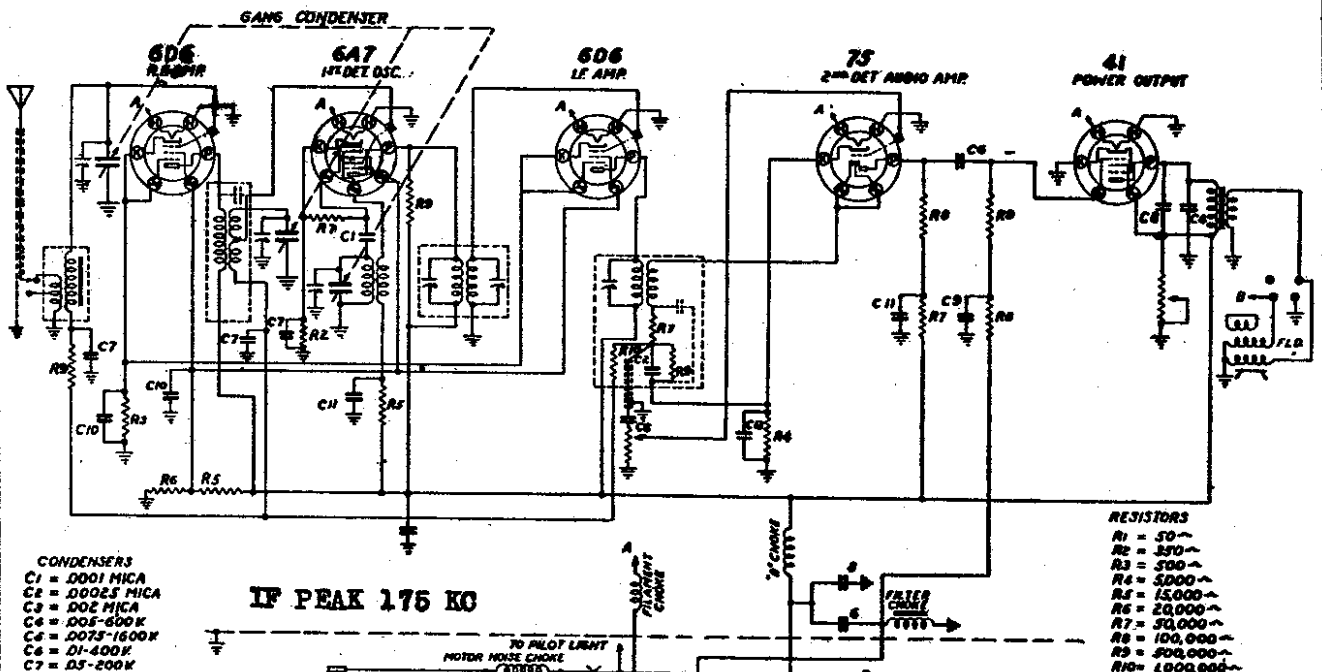


MODELS A-9780, A-9781
 Chassis B-6
 Schematic, Socket, Alignment
 Trimmers

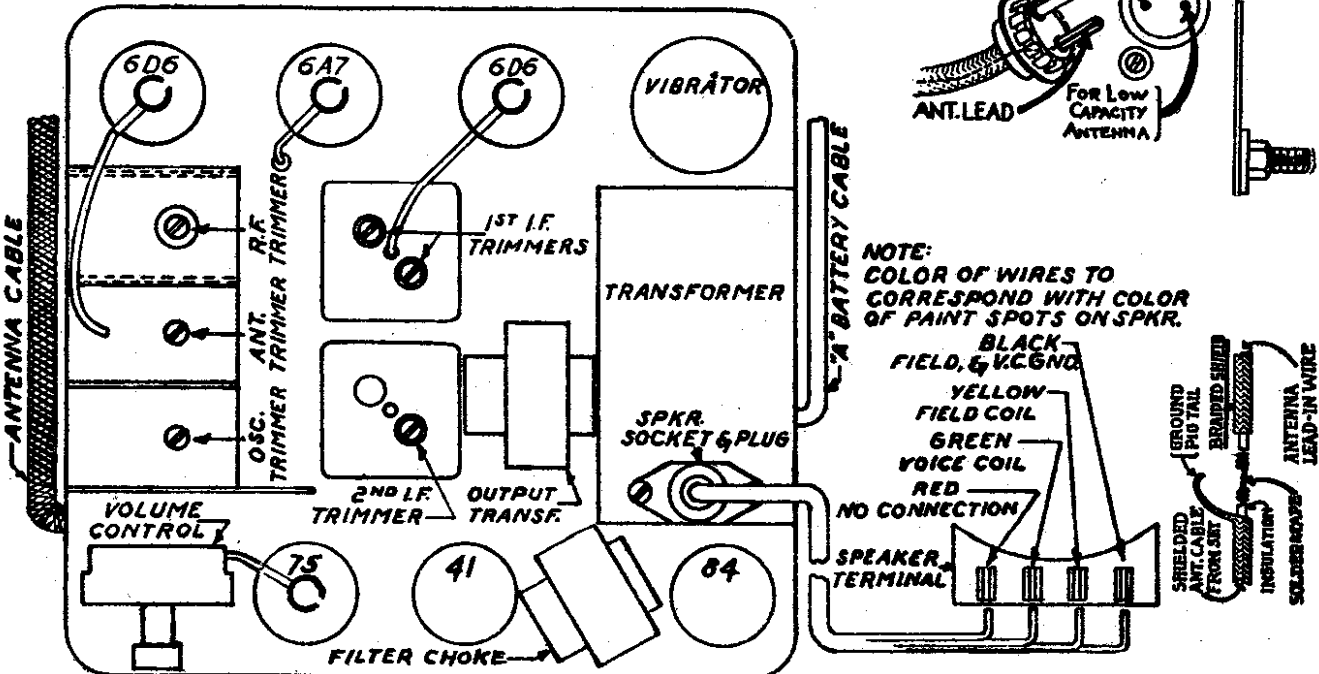
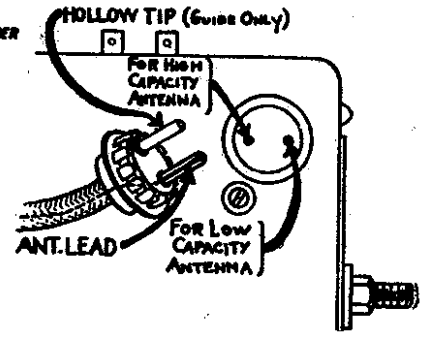
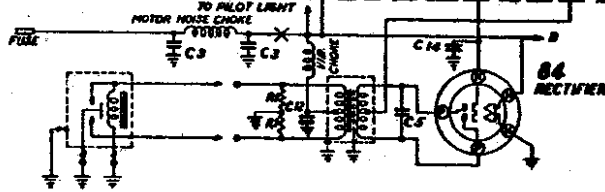
ALLIED RADIO CORP.



- CONDENSERS
 C1 = .0001 MICA
 C2 = .00025 MICA
 C3 = .002 MICA
 C4 = .005-.000K
 C5 = .0075-1500K
 C6 = .01-400K
 C7 = .05-200K
 C8 = .05-400K
 C9 = .25-200K
 C10 = 1-200K
 C11 = 1-400K
 C12 = 5-30K
 C13 = 5HF-30K
 C14 = .01-600K

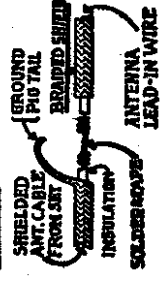
- RESISTORS
 R1 = 50~
 R2 = 150~
 R3 = 500~
 R4 = 5000~
 R5 = 15,000~
 R6 = 20,000~
 R7 = 50,000~
 R8 = 100,000~
 R9 = 500,000~
 R10 = 1,000,000~

IF PEAK 175 KC



NOTE:
 COLOR OF WIRES TO
 CORRESPOND WITH COLOR
 OF PAINT SPOTS ON SPKR.

- BLACK - FIELD, & V.C. GND.
- YELLOW - FIELD COIL
- GREEN - VOICE COIL
- RED - NO CONNECTION



IF ALIGNMENT - Adjust Generator to 175 KC, connect output to grid of 6A7, the omission of series cond and resistor to block out AVC action. Generator grounded to chassis. Align trimmers of IF trnsformers (three).

OSCILLATOR - Adjust Generator to 1400 KC, connect through 100 MMFD cond. to the antenna of receiver. Adjust 1st section of gang condenser trimmer to max. peak.

RF ALIGNMENT - Adjust the Antenna and RF trimmers on gang condenser to maximum peak at 1400 KC. Repeat all adjustments for maximum performance.