

Service Manual

Model: AMX-140/AMX-140FX



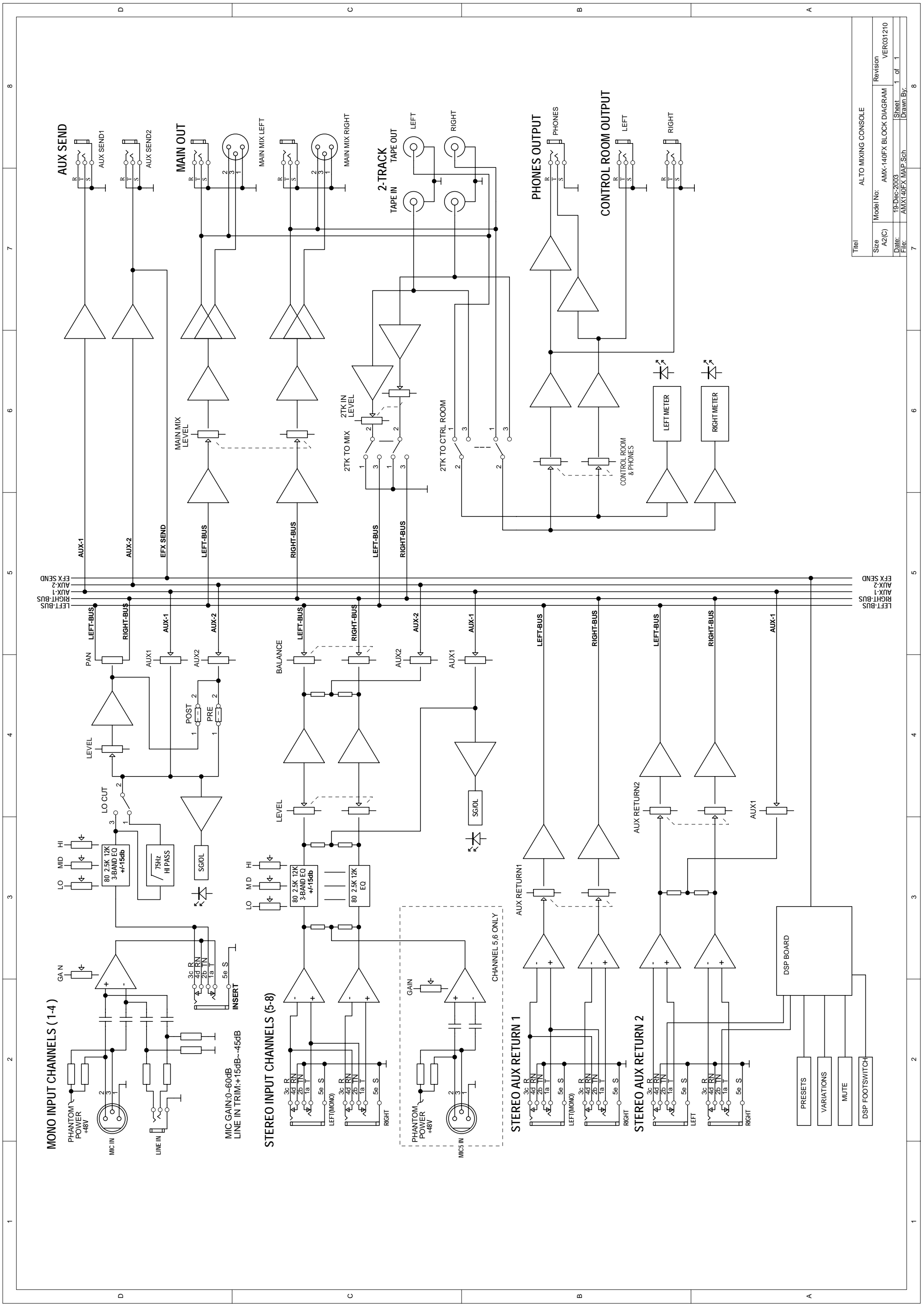
www.altoproaudio.com

Version: .2

CONTENTS

- 1. Specification**
- 2. Block Diagram**
- 3. Schematic Diagram**
- 4. Printed Circuit Board**
- 5. Wiring Diagram**
- ~~**6. Test Procedure**~~
- 7. Electrical Parts List**
- 8. Exploded Views & Mechanical Parts List**
- 9. Notes**

Mono input channels		
	Microphone input	electronically balanced, discrete input configuration
	Frequency response	10Hz to 55kHz, +/- 3dB
	Distortion (THD & N)	0.005% at +4dBu, 1kHz
	Gain range	0dB to 44dB (MIC)
	SNR (Signal to Noise Ratio)	115dB
	Line input	electronically balanced
	Frequency response	10Hz to 55kHz, + -3dB
	Distortion (THD & N)	0.005% at +4dBu, 1kHz
	Sensitivity range	+15dBu to -30dBu
Stereo input channels		
	Line input	Unbalanced
	Frequency response	10Hz to 55kHz, +/- 3dB
	Distortion (THD & N)	0.005% at +4dBu, 1kHz
Impedances		
	Microphone input	1.4kOhm
	Channel Insert return	2.5kOhm
	All other inputs	10kOhm or greater
	Tape out	1kOhm
	All other output	120Ohm
Equalization		
	Hi shelving	+/- 15dB @12kHz
	Mid bell	+/- 12dB @2.5kHz
	Low shelving	+/- 15dB @80Hz
	Low Cut filter	75Hz, 18dB/oct.
DSP Section (For AMX-140FX Model)		
	A/D and D/A converters	24 bit
	DSP resolution	24 bit
	Type of effects	Hall, Room, Vocal & Plate REVERBS Mono & Stereo DELAY (max DELAY TIME 650ms) Chorus, Flanger & Reverb MODULATIONS REVERB+DELAY, REVERB+CHORUS, REVERB+FLANGER combinations
	Presets	256
	Controls	16-position PRESET Selector 16-position VARIATION selector PEAK LED MUTE SWITCH with LED indicator
Main Mix Section		
	Noise (Bus noise)	Fader 0 dB, channels muted: -100dBr (ref.:+4dBu) Fader 0dB, all input channels assigned and set to UNITY gain: 90dBr (ref.:+4dBu)
	Max output	+22dBu balanced XLR, +22dBu unbalanced, 1/4" jacks
	AUX Returns gain range	- to +20dB
	AUX Sends max out	+22dBu
Power supply (AC/AC Adaptor)		
	Main voltage	USA/Canada 100 120V~, 60Hz Europe 210 240V~, 50Hz U.K./Australia 240V~, 50Hz
	Power Consumption	17.1 watts
Physical		
	Dimension (W X D X H)	270mmX310mmX35/45mm (7.79"X8.95" X1.01"/1.30")
	Net weight	3.0Kg (6.61lb)
	Shipping weight	3.6Kg (7.94lb)



Title: ALTO MIXING CONSOLE			
Size: A2(C)	Model No: AMX-140FX BLOCK DIAGRAM	Revision: VER031210	
Date: 19-Dec-2003	File: AMX140FX.MAP.Sch	Sheet: 1 of 1	Drawn By:

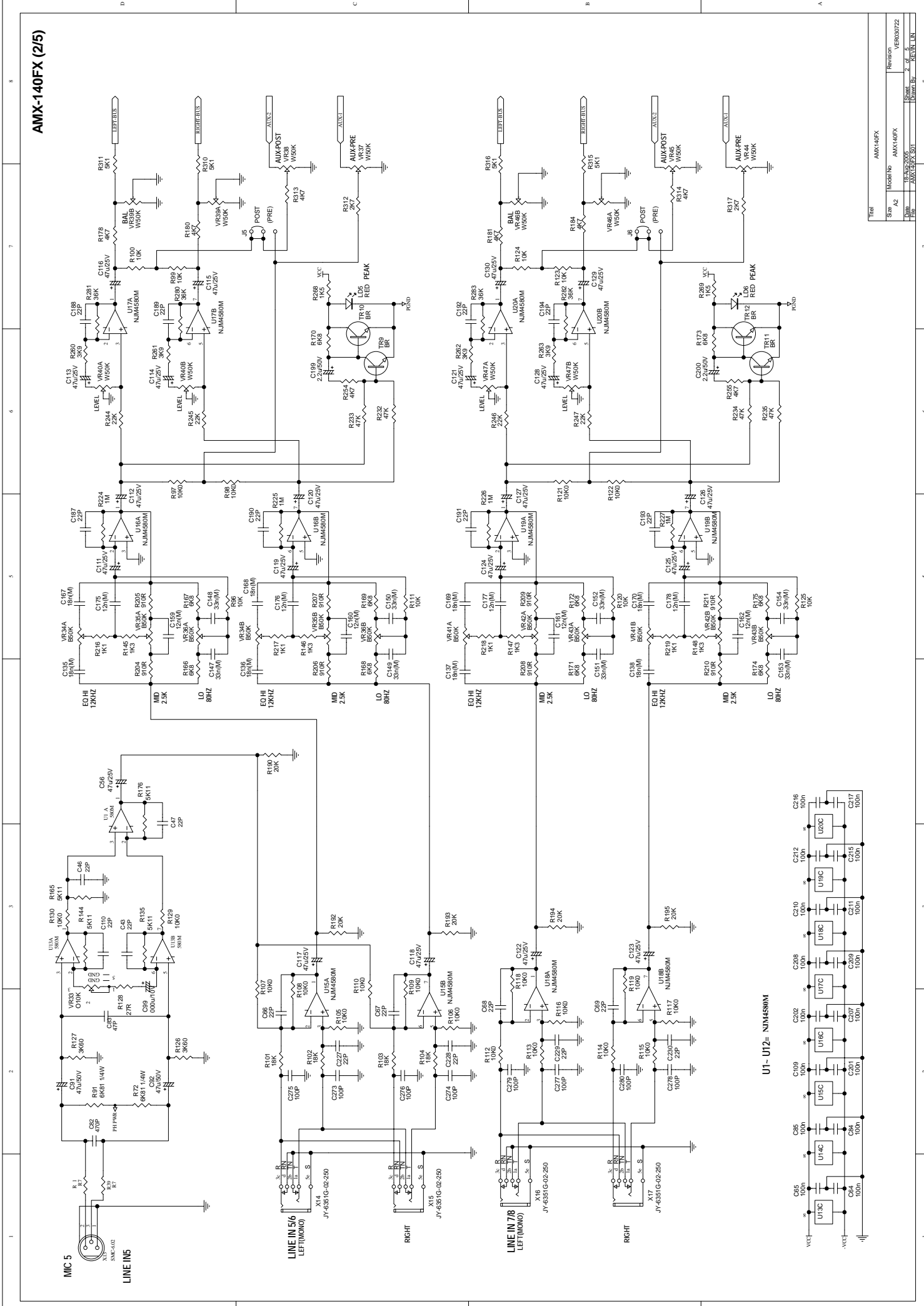
- PRESETS
- VARIATIONS
- MUTE
- DSP FOOTSWITCH

DSP BOARD

1 2 3 4 5 6 7 8

A B C D

AMX-140FX (2/5)



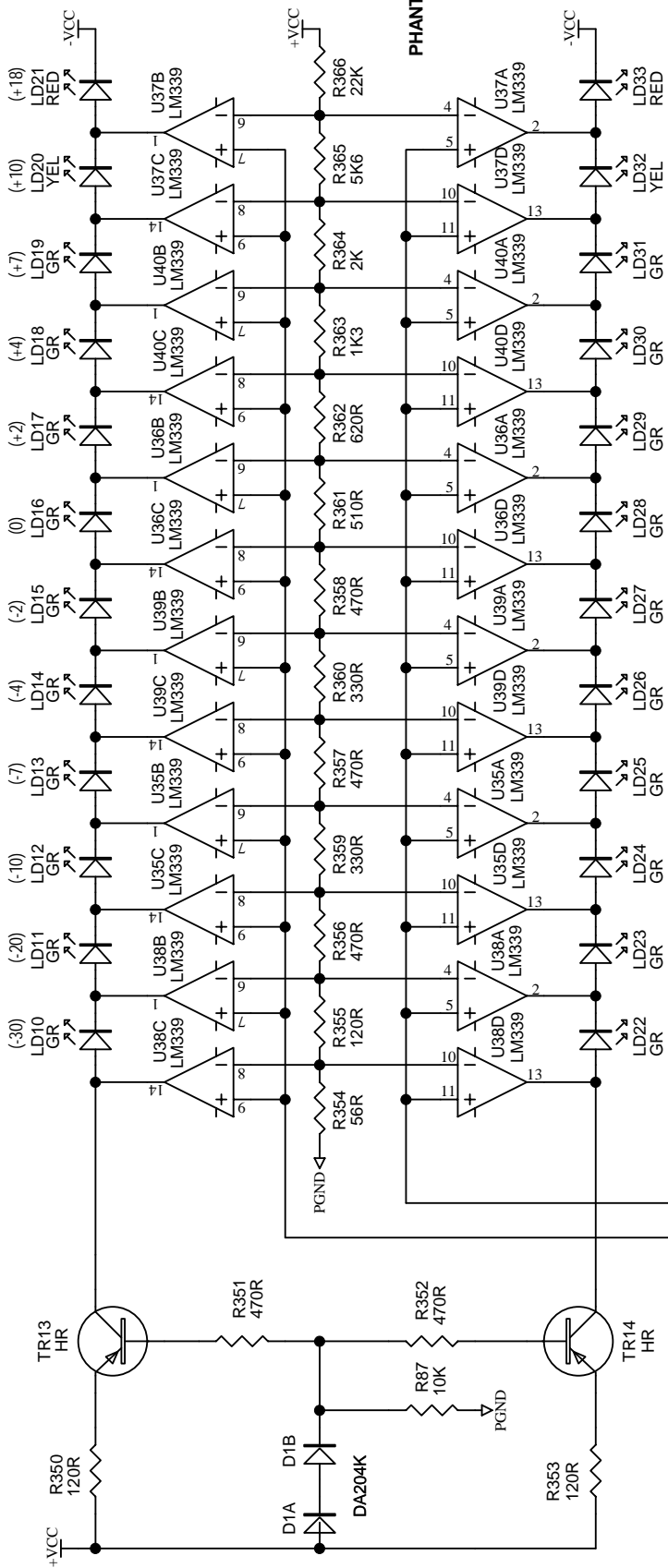
U1 - U12 = NJM4580M

Rev	AMX140FX
Supp	McEneaney
A2	AMX140FX
Drawn	12-26-2005
Part No	AMX-140FX 2/5
Drawn By	REVIN LIN



AMX-140FX (4/5)

LEFT METER



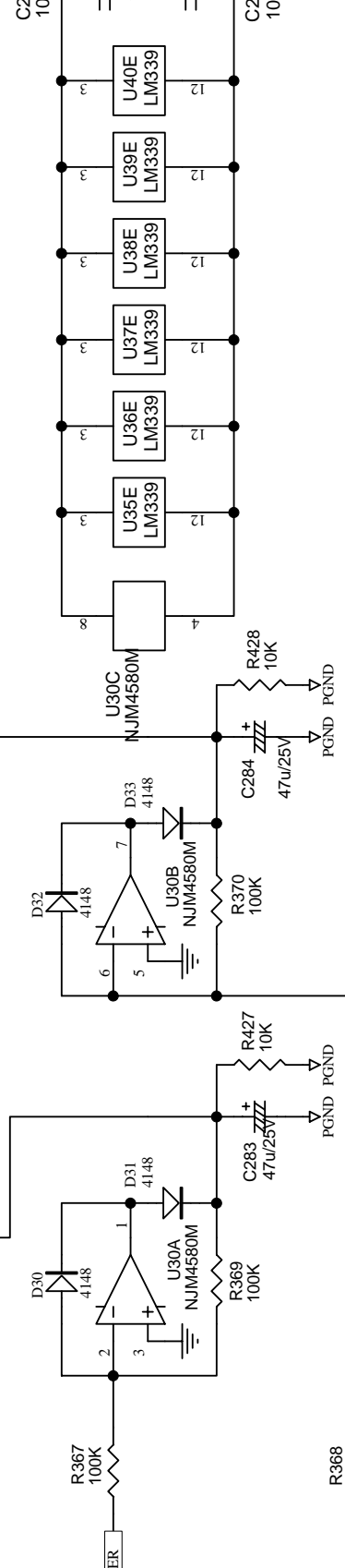
(+18) LD21 RED
 (+10) LD20 YEL
 (+7) LD19 GR
 (+4) LD18 GR
 (+2) LD17 GR
 (0) LD16 GR
 (-2) LD15 GR
 (-4) LD14 GR
 (-7) LD13 GR
 (-10) LD12 GR
 (-20) LD11 GR
 (-30) LD10 GR

LD21 RED
 LD20 YEL
 LD19 GR
 LD18 GR
 LD17 GR
 LD16 GR
 LD15 GR
 LD14 GR
 LD13 GR
 LD12 GR
 LD11 GR
 LD10 GR

LD22 GR
 LD23 GR
 LD24 GR
 LD25 GR
 LD26 GR
 LD27 GR
 LD28 GR
 LD29 GR
 LD30 GR
 LD31 GR
 LD32 YEL
 LD33 RED

PHANTOM BR
 PHLEID

PWR ON
 LD7 GR



LD34 GR
 LD35 GR
 LD36 GR
 LD37 GR

LD38 GR
 LD39 GR
 LD40 GR
 LD41 GR

LD42 GR
 LD43 GR
 LD44 GR
 LD45 GR
 LD46 GR
 LD47 GR
 LD48 GR
 LD49 GR
 LD50 GR
 LD51 GR
 LD52 GR
 LD53 GR
 LD54 GR
 LD55 GR
 LD56 GR
 LD57 GR
 LD58 GR
 LD59 GR
 LD60 GR
 LD61 GR
 LD62 GR
 LD63 GR
 LD64 GR
 LD65 GR
 LD66 GR
 LD67 GR
 LD68 GR
 LD69 GR
 LD70 GR
 LD71 GR
 LD72 GR
 LD73 GR
 LD74 GR
 LD75 GR
 LD76 GR
 LD77 GR
 LD78 GR
 LD79 GR
 LD80 GR
 LD81 GR
 LD82 GR
 LD83 GR
 LD84 GR
 LD85 GR
 LD86 GR
 LD87 GR
 LD88 GR
 LD89 GR
 LD90 GR
 LD91 GR
 LD92 GR
 LD93 GR
 LD94 GR
 LD95 GR
 LD96 GR
 LD97 GR
 LD98 GR
 LD99 GR
 LD100 GR

PHANTOM BR
 PHLEID

PWR ON
 LD7 GR



PHANTOM BR
 PHLEID

PWR ON
 LD7 GR

PHANTOM BR
 PHLEID

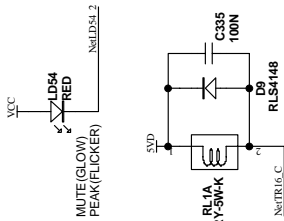
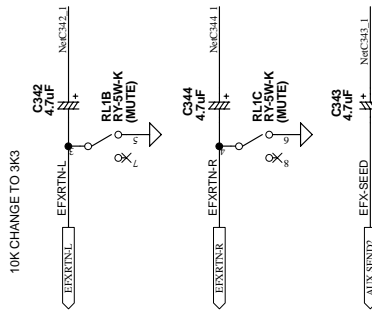
PWR ON
 LD7 GR

Size	A2	Model No.	AMX140FX	Revision	VER0030722
Date:	18-Aug-2005	Sheet	4 of 5	Drawn By:	KEVIN LIN.
File:	AMX140FX.S03				

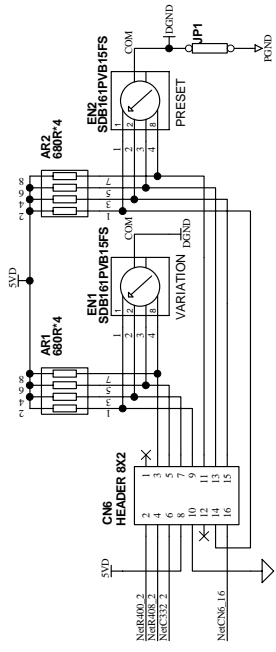
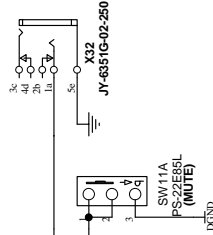
Titel AMX140FX

AMX-140FX (5/5)

DSP

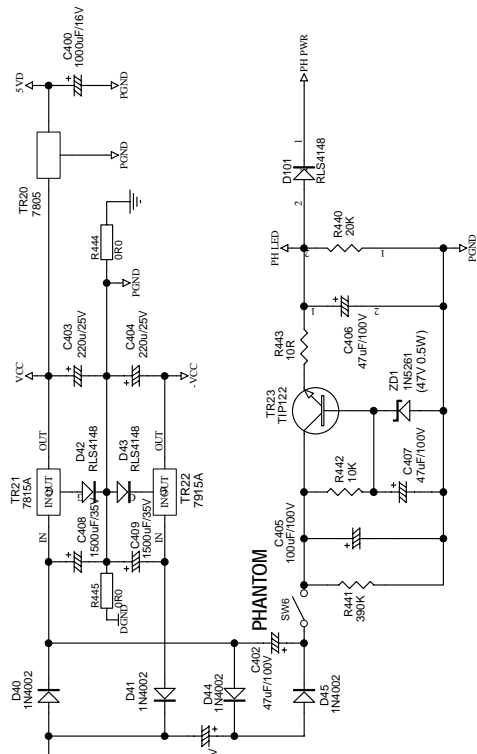


FOOTSWITCH



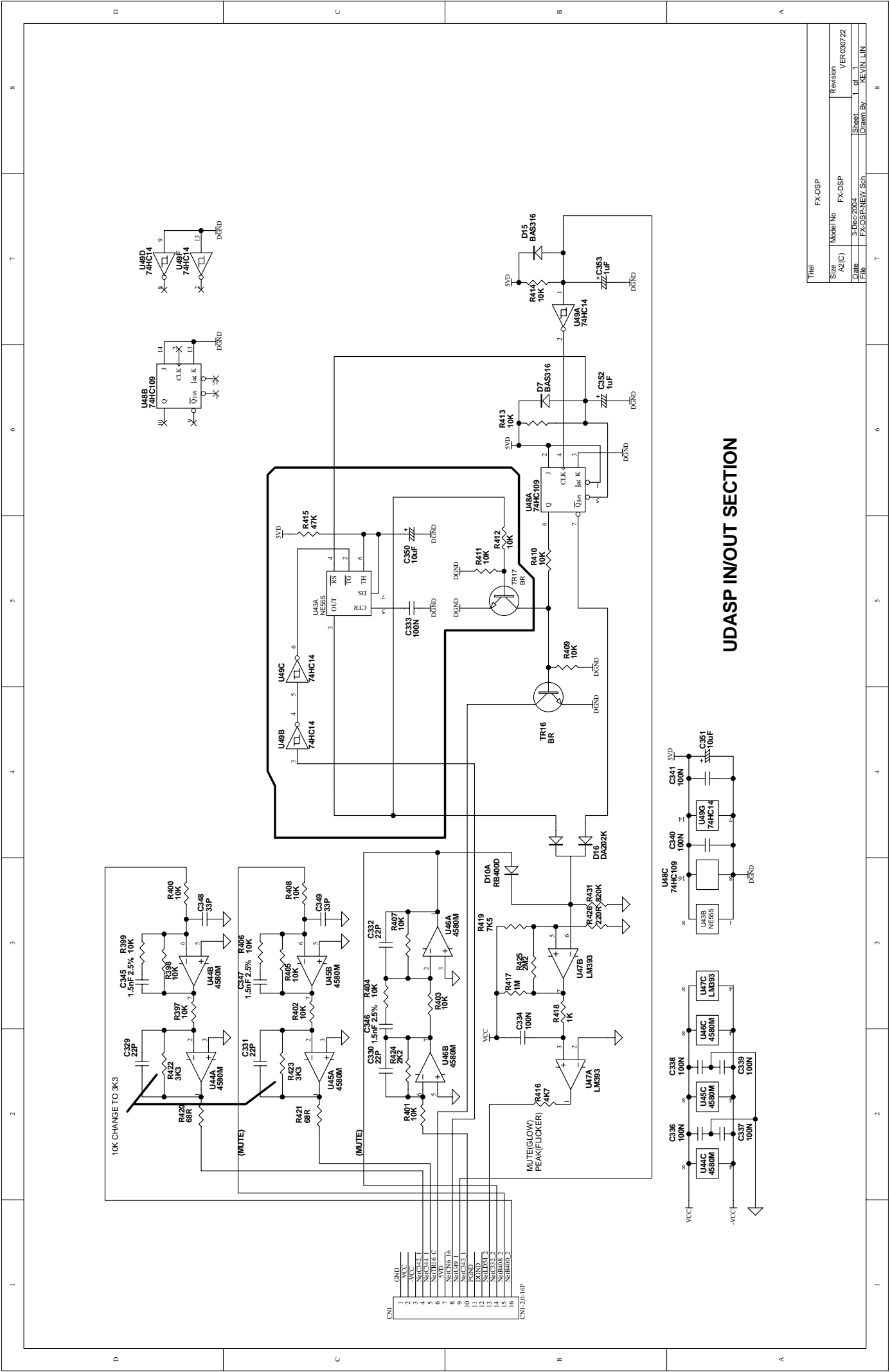
CN2		ZDSP	
1	VCC	1	
2	VCC	2	
3	VCC	3	
4	NC	4	
5	NC	5	
6	NC	6	
7	NC	7	
8	NC	8	
9	NC	9	
10	NC	10	
11	PCND	11	
12	PCND	12	
13	PCND	13	
14	PCND	14	
15	PCND	15	
16	PCND	16	

PHANTOM PWR



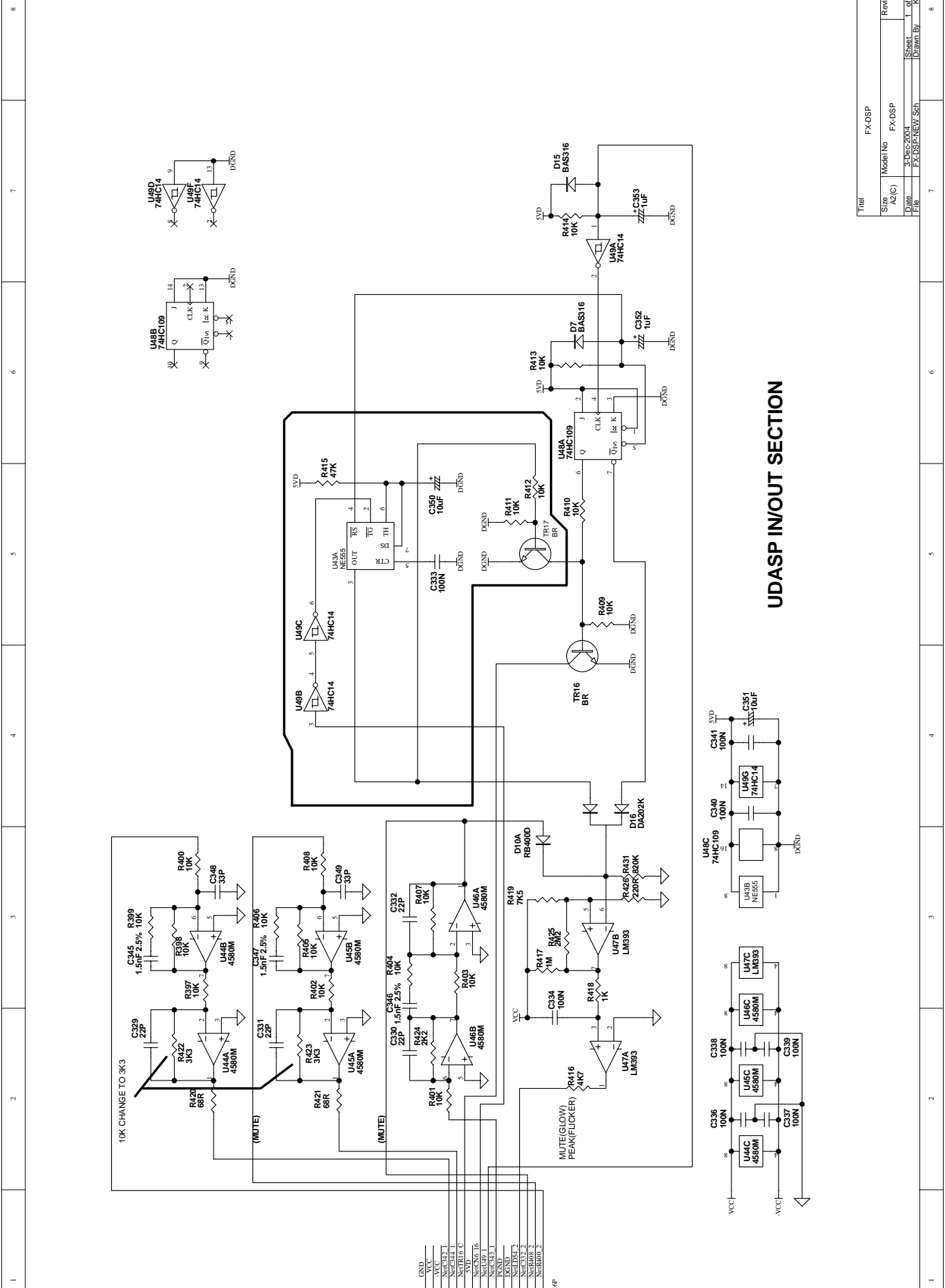
Title			AMX140FX		
S/N			Model No		
A2(C)			AMX140FX		
REV			REV		
5			5		
REV			REV		
LIN			LIN		
8			8		

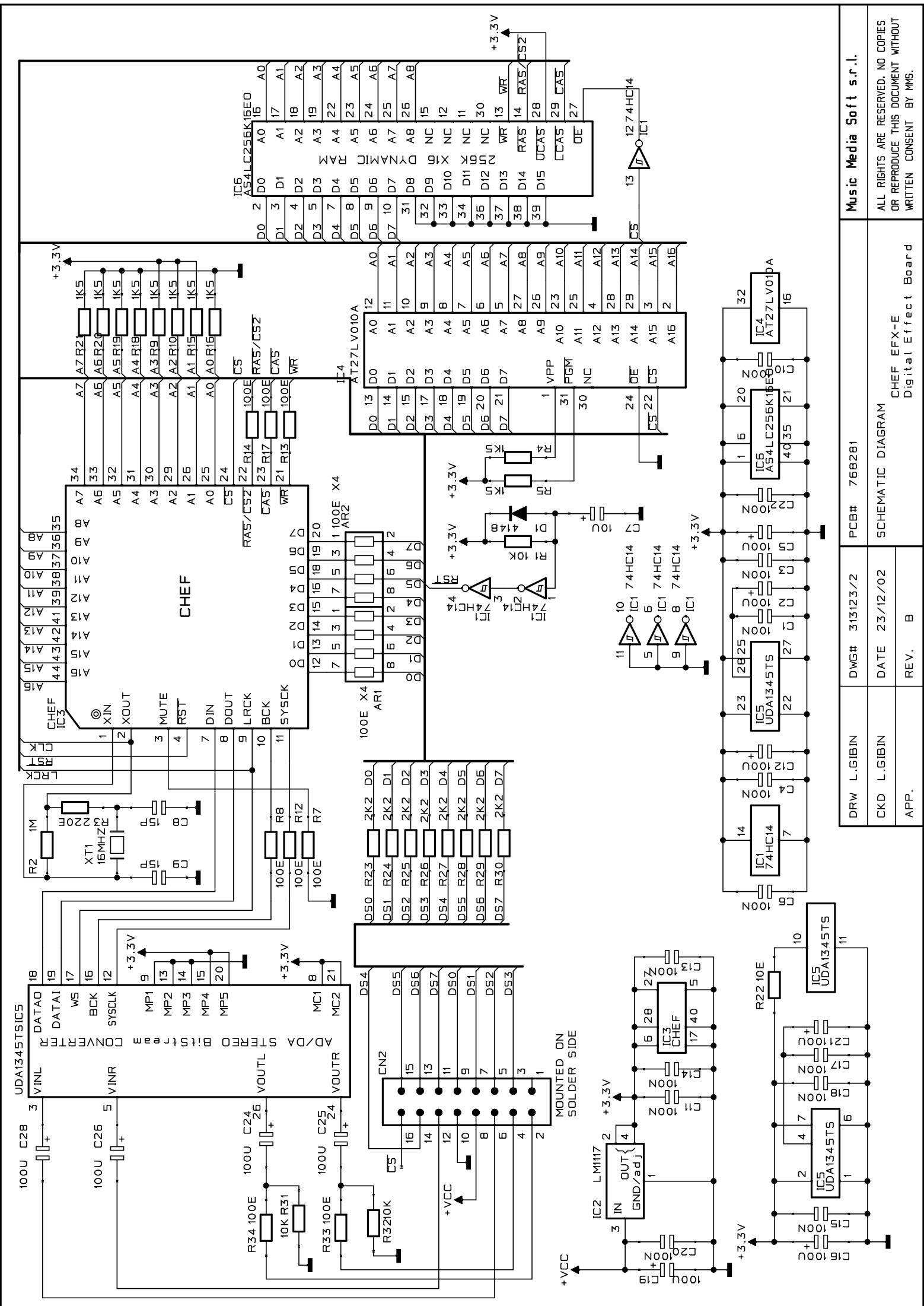
Total		AMX140FX		Revision		VER030722	
S/N		Model No		REV		REV	
A2(C)		AMX140FX		5		5	
REV		REV		LIN		LIN	
8		8		8		8	



UDASP IN/OUT SECTION

Title		FX-DSP	
Size	Model No	FX-DSP	Revision
A2(C)			VER.030722
Drawn	Checked	3-DES-2007	1-2
File	Drawn By	FX-DSP/NEW/Sch	KEVIN LIN

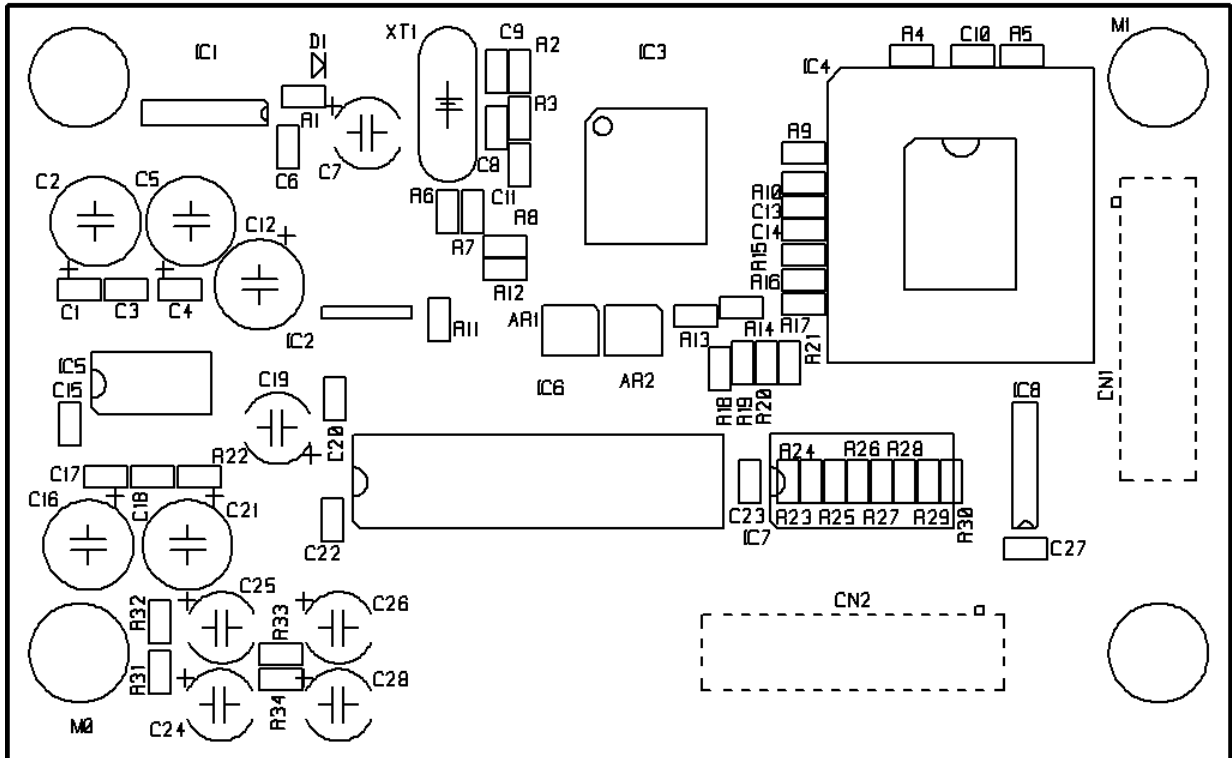




DRW L.GIBIN	DWG# 313123/2	PCB# 768281	Music Media Soft s.r.l.
CKD L.GIBIN	DATE 23/12/02	REV. B	ALL RIGHTS ARE RESERVED, NO COPIES OR REPRODUCE THIS DOCUMENT WITHOUT WRITTEN CONSENT BY MMS.
APP.			CHEF EF-E Digital Effect Board

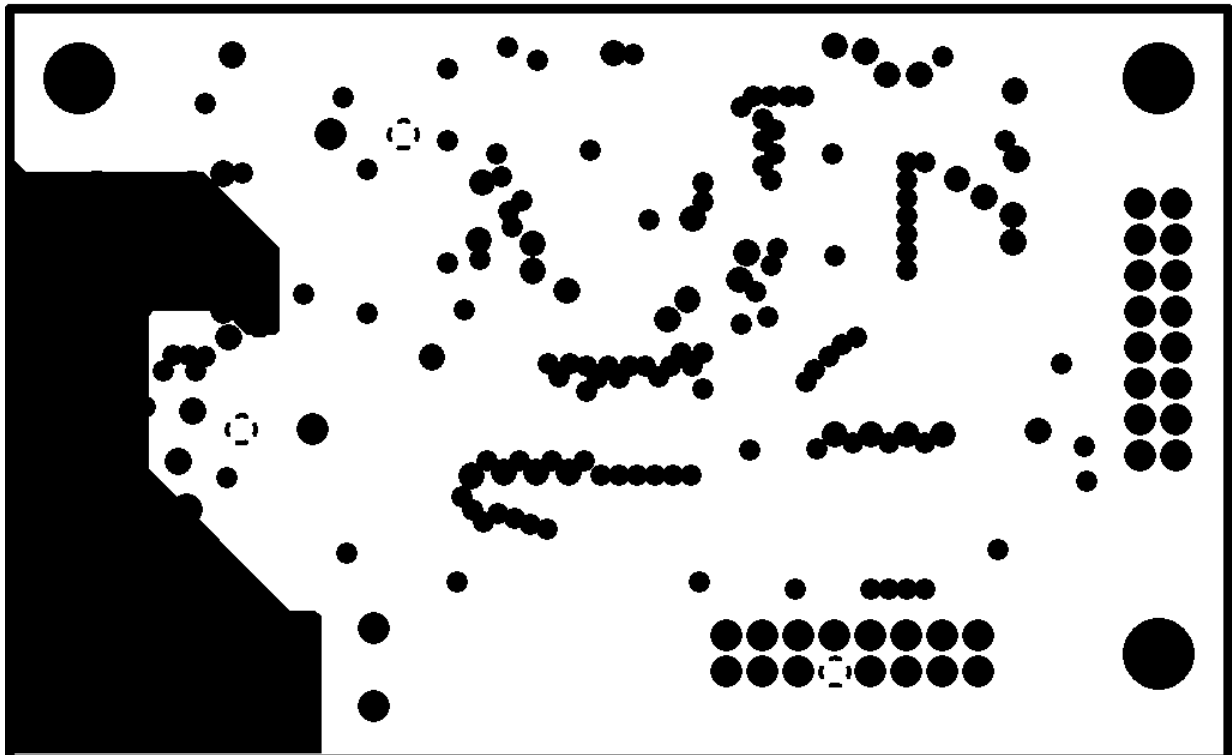
SCHMATIC DIAGRAM

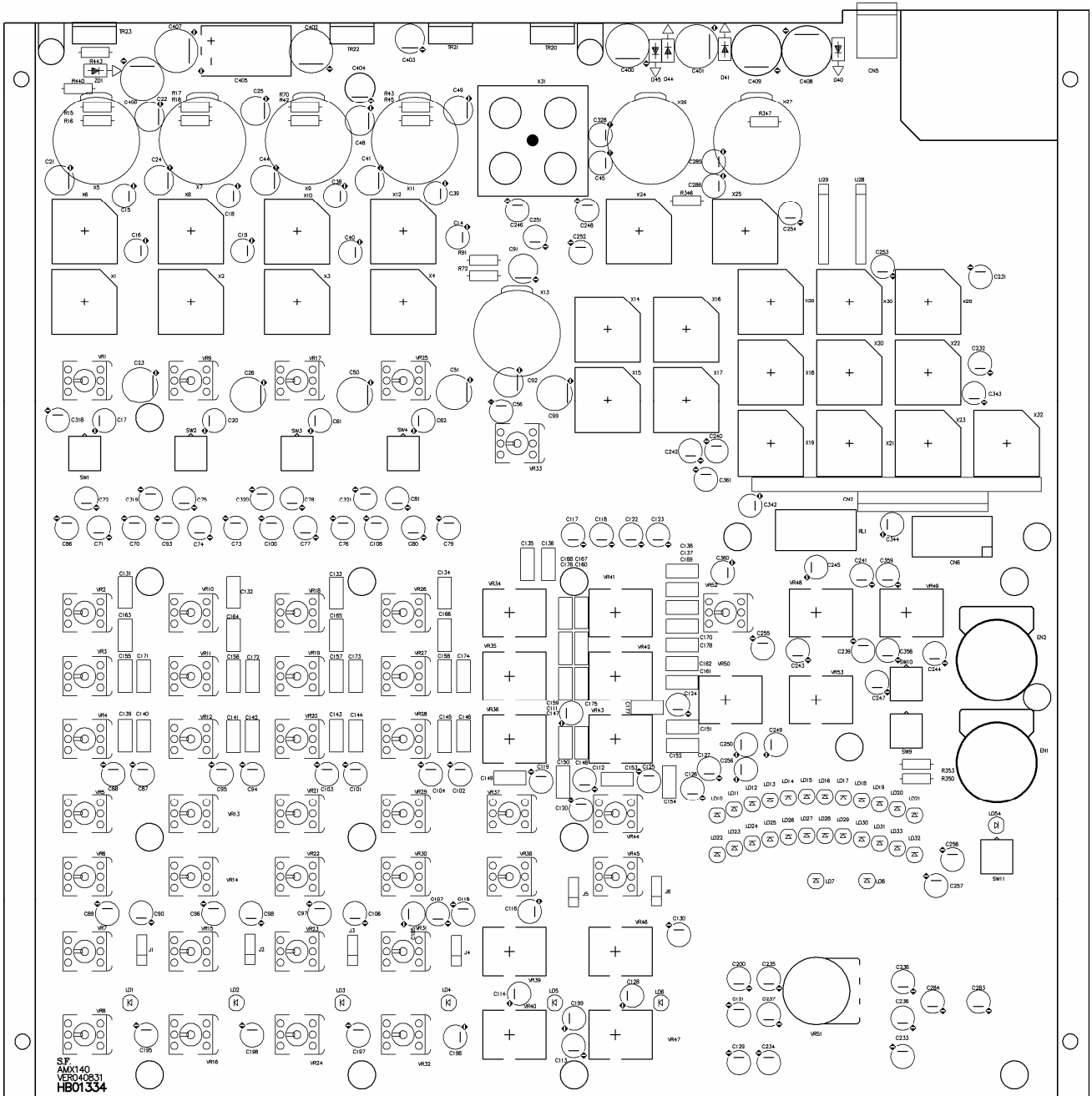
313123/2 TOP SILK



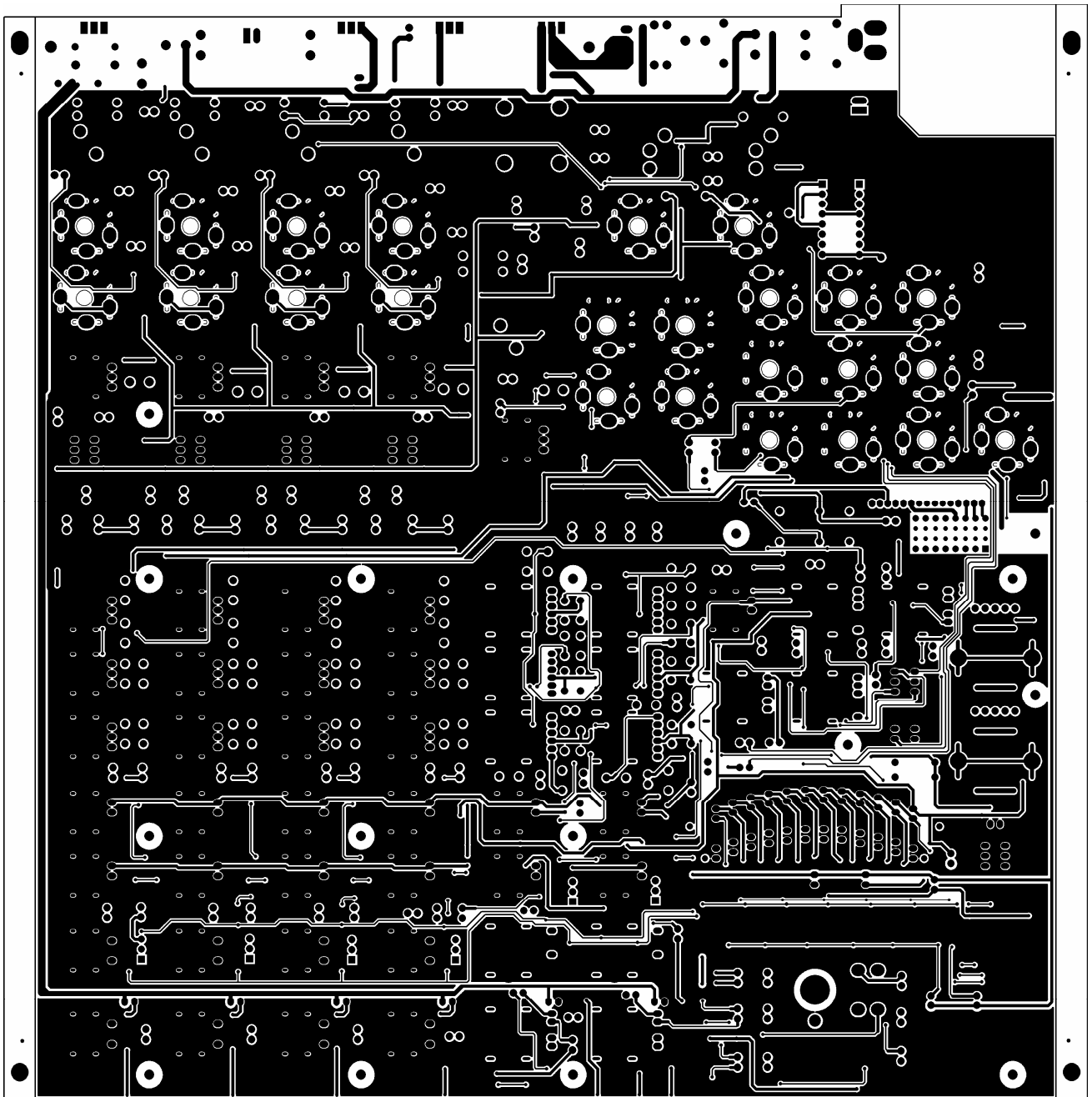
PCB : 313123/2 Top Overlay

313123/2 I* INTERNAL LAYER GND

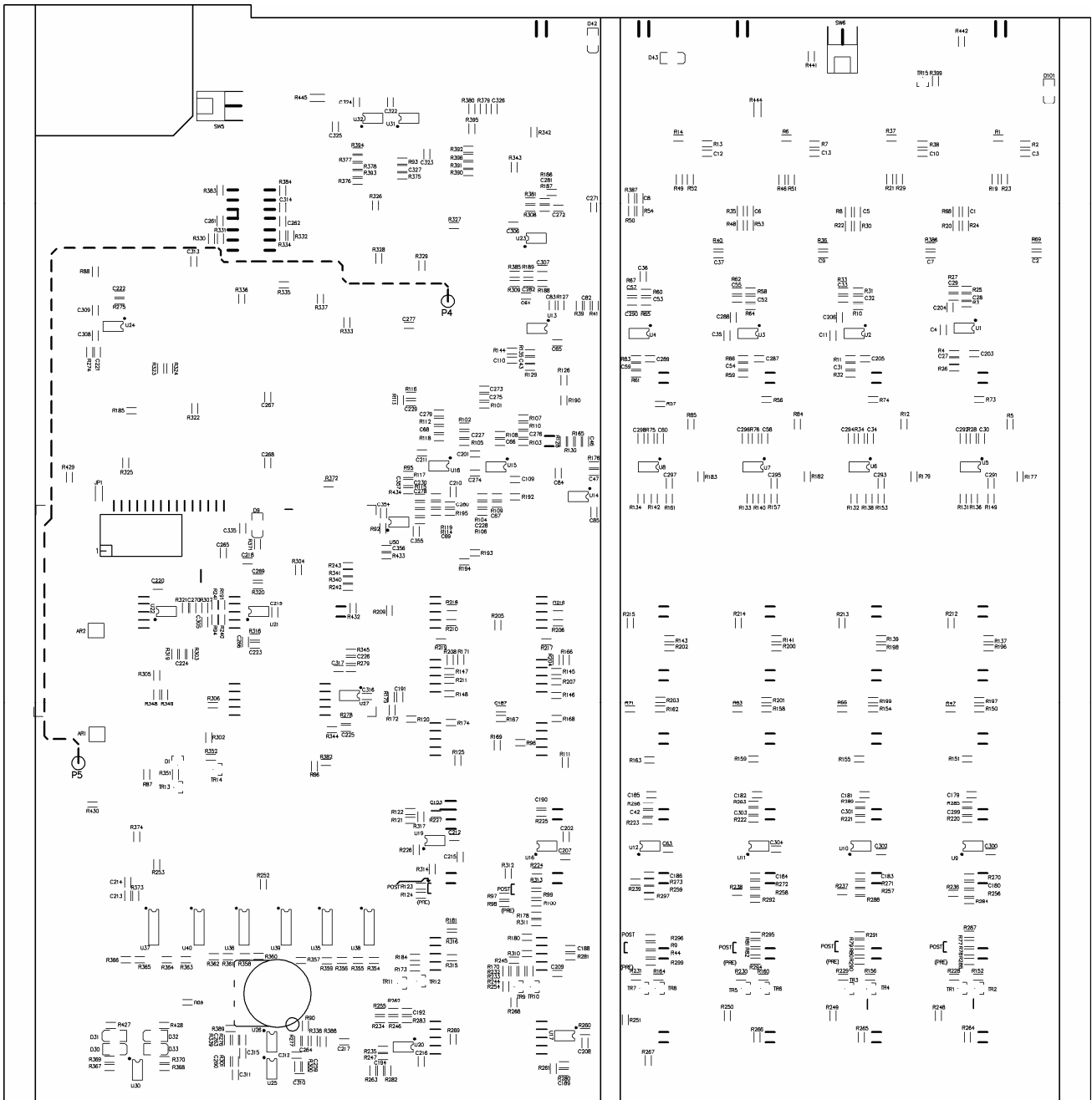




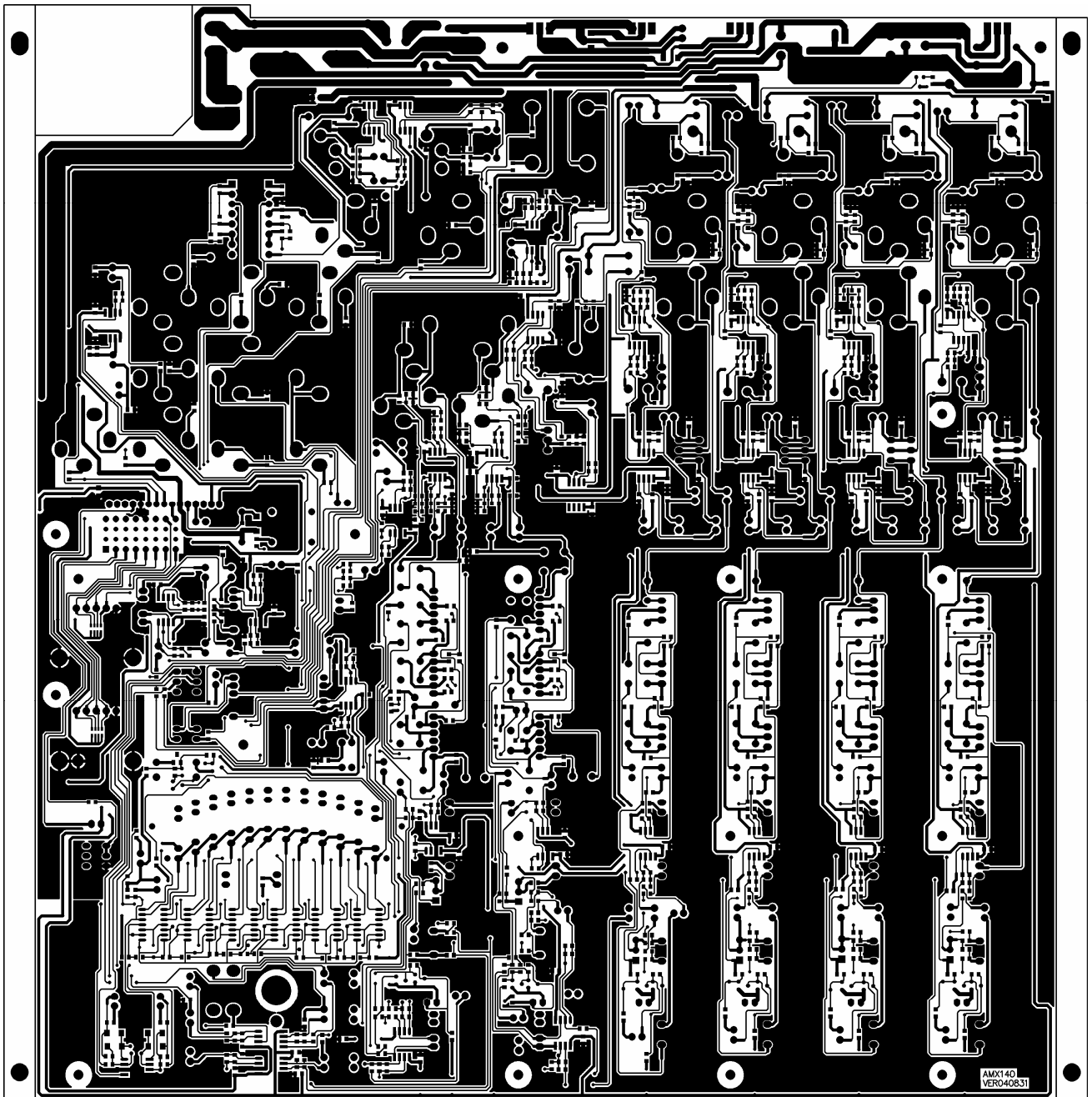
PCB : AMX-140FX Top Overlay



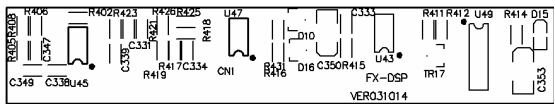
PCB : AMX-140FX Top Layer



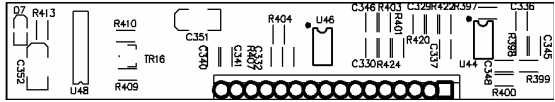
PCB : AMX-140FX Bottom Overlay



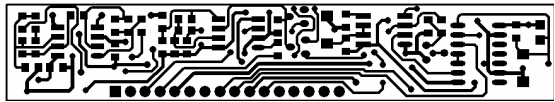
PCB : AMX-140FX Bottom Layer



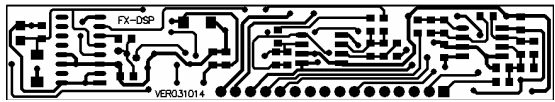
PCB : FX-DSP Top Overlay



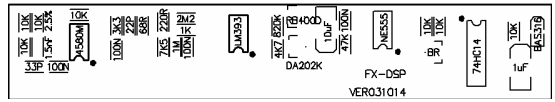
PCB : FX-DSP Bottom Overlay



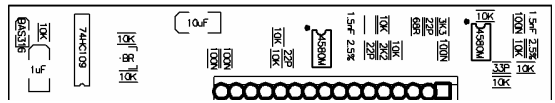
PCB : FX-DSP Top Layer



PCB : AMX-100FX Bottom Layer

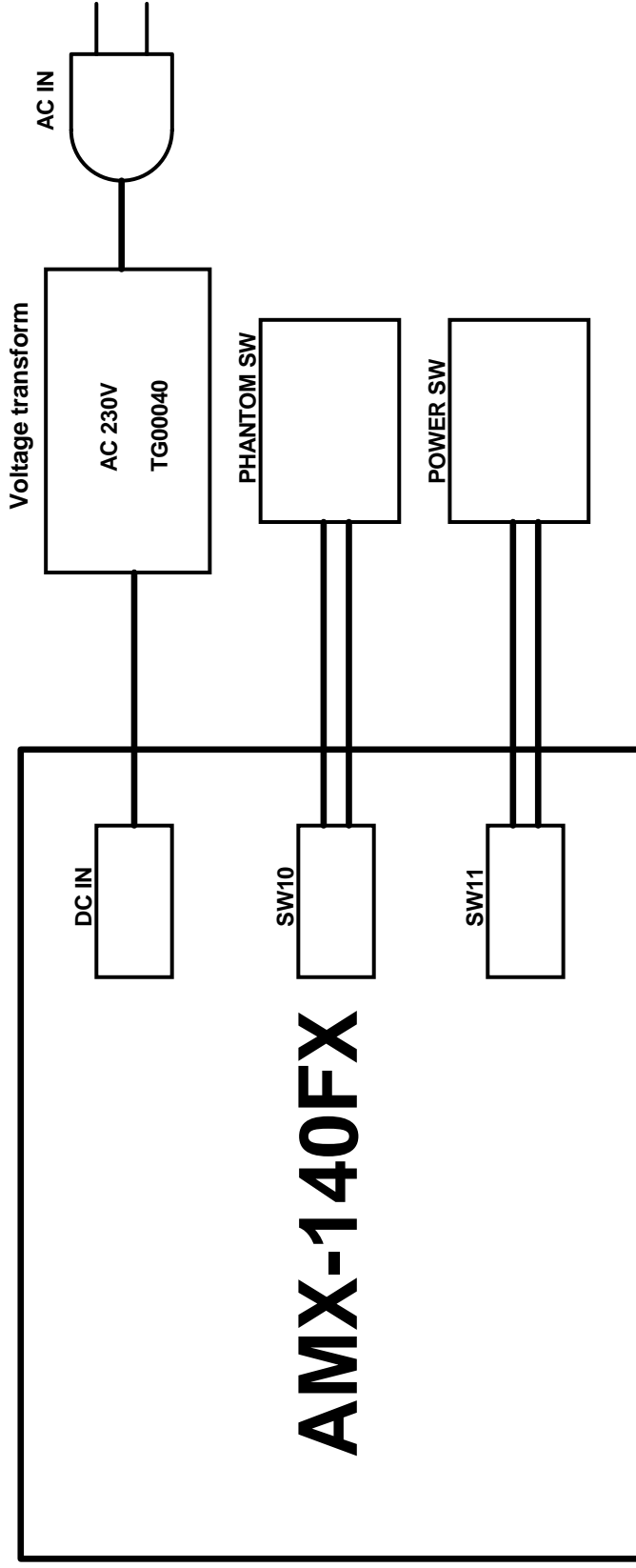


PCB : FX-DSP Top Overlay



PCB : FX-DSP Bottom Overlay

AMX-140FX Wiring Diagram



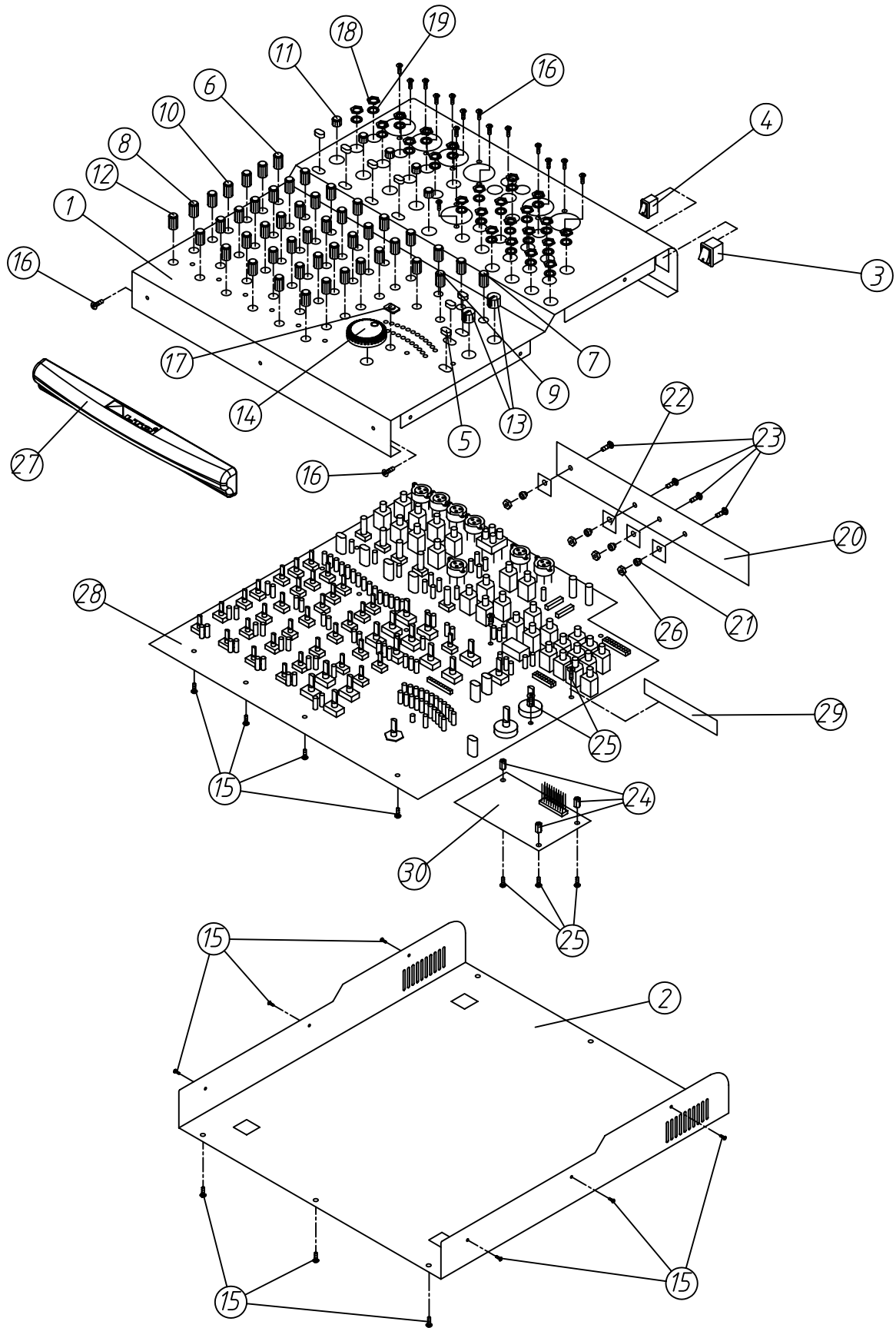
Title	
Size	Number
A3	Revision
Date: 4-Dec-2004	Sheet of
File: D:\服务手册\AMX-140FX\服务手册\AMX-140FX.dwg	8

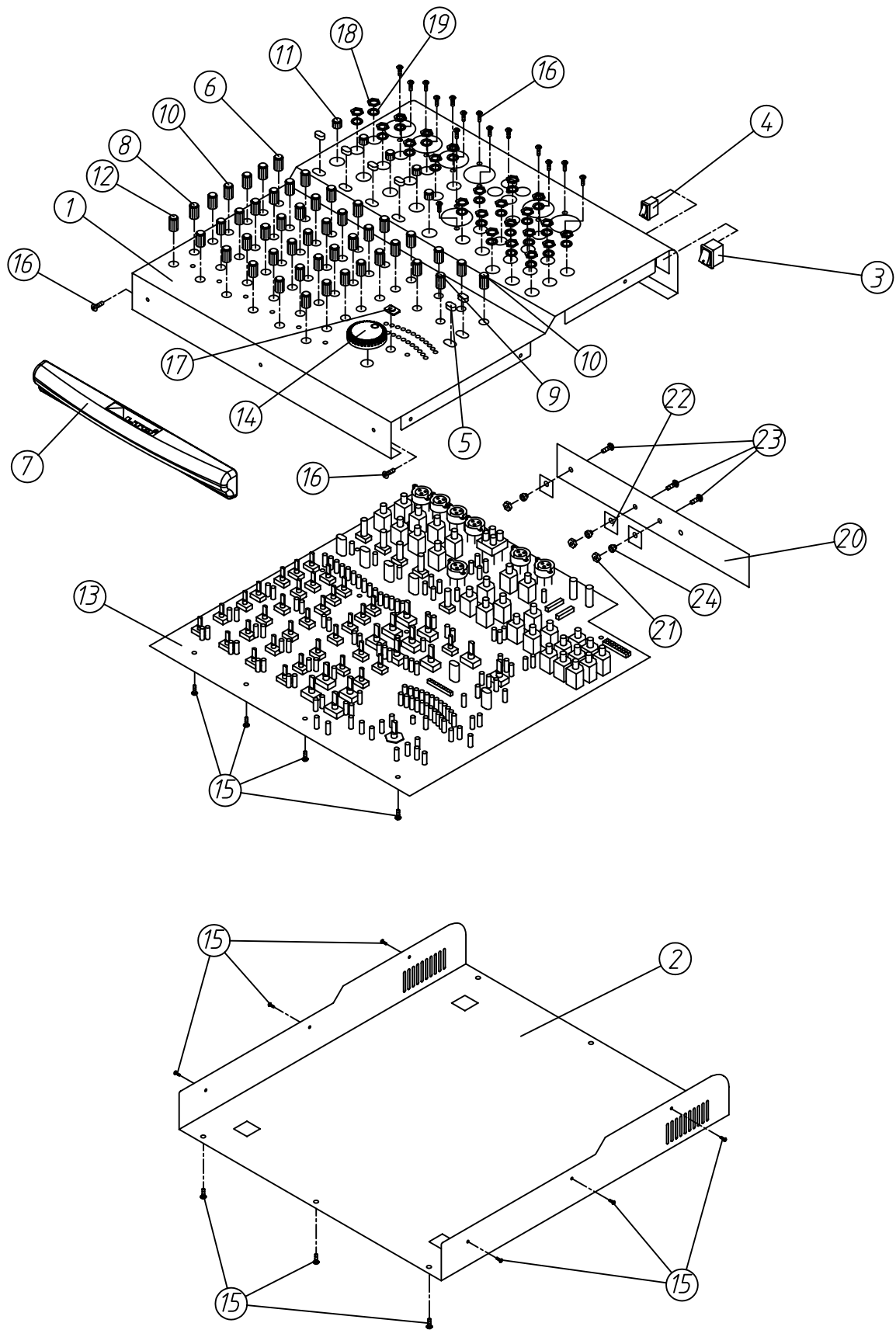
	PF01442	AMX-140FX	AMX-140FX_ALTO_230V_歐規_無		Revised:2005/8/18
Level	Part No.	Description	Specification	Qty	Reference
0001	MA04539	panel	AMX-140FX ALTO	1	
0002	MB03078	rear board	AMX-140	1	
0003	HI00026	power switch	RA12KKATOF 2P	1	
0006	NI01862	key	5.5*5.5*12.8	4	
0007	NI02083	knob	10.5*18mm	18	
0008	NI02633	knob	10.5*18	8	
0009	NI02082	knob	10.5*18mm	6	
0010	NI02817	knob	10.5*18mm	2	
0011	NI02081	knob	10.5*18mm	7	
0012	NI02714	knob	10*13.5mm	5	
0013	NI00826	knob	12*18mm double color	6	
0014	NI02386	konb	14*13mm	2	
0015	NI02837	knob	35*11mm 534C	1	
0016	MG00041	screw	M3*6	27	
0017	MG00061	screw	M3*10	18	
0018	NI02836	acrylic panel	10*7*3mm AMX-140	1	
0019	ME00060	MIC jack	JY-6351G-02-250	24	
0020	MF00061	MIC jack	9.6* 13*0.5t	24	
0021	TG00040	adaptor	230V/50Hz_AC18V/1000mA_EI-48	1	
0022	NI00252	sleeve	4*20mm	4	
0023	NI00501	self-adhere foot cushion	12.7*9*3t(SF-004)	4	
0024	NA00123	PE bag	0.04t*580*300mm	1	
0025	HJ00006	dessicant	30g	1	
0026	MI01905	heat sink	AMX-140 2.0t*195.5*29*2mm	1	
0027	NI02249	plastic washer	TW-1(TO-220)	4	
0028	NC00005	silicone insulator	TO-220 square type	4	
0029	MG00162	screw	M3*8	4	
0030	MG00261	copper pillar	M3*8.5*0.5PH	3	
0031	MF00037	washer	3.2* 5.5*1t	3	
0032	ME00015	color nut	3m/m	7	
0033	NF00061	assurance card	ALTO	1	
0034	NE05004	label	ALTO	4	
0035	HA01388	row-wire connector wiring	2P 100	1	
0036	HA01442	row-wire connector wiring	2P 200	1	
0037	NF01658	instruction	AMX-140/140FX ALTO_V1.3	1	
0038	NB02753	gift carton	AMX-140FX ALTO	1	
0039	NE12193	label	AMX-140FX	4	
0040	NI02835	handle	269*33*26mm AMX-140 black	1	
0041	NB02757	barrier	AMX-140	1	
0042	NB02756	barrier	AMX-140	1	
0043	NB02752	carton	AMX-140;140FX	1	
0044	NI01594	MOUNT	TH-1	1	
0045	NI00218	cable tie	ALT-102SB	3	
0046	HK00821	PC board	P-AMX-140FX-DIP	1	
0001	CB00003	electrolytic capacitor	0.22uF/50V 5*11mm	12	C70,C71,C72,C73,C74,C75,C76,C77,C78,C79,C80,C81
0002	CB00011	electrolytic capacitor	2.2uF/50V 5*11mm	6	C195,C196,C197,C198,C199,C200
0003	CB00018	electrolytic capacitor	4.7uF/25V 4*7mm	3	C342,C343,C344
0004	CB00029	electrolytic capacitor	22uF/35V 5*11mm	8	C14,C15,C16,C18,C19,C38,C39,C40
0005	CB00039	electrolytic capacitor	47uF/25V 5*11mm	87	C17,C20,C45,C56,C61,C62,C86,C87,C88,C89,C90,C93,C94,C95,C96,C97,C98,C100,C101,C102,C103,C104,C105,C106,C107,C108,C111,C112,C113,C114,C115,C116,C117,C118,C119,C120,C121,C122,C123,C124,C125,C126,C127,C128,C129,C130,C231,C232,C233,C234,C235,C236,C237,C238,C239,C240,C241,C242,C243,C244,C245,C246,C247,C248,C249,C250,C251,C252,C253,C254,C255,C256,C257,C258,C283,C284,C285,C286,C318,C319,C320,C321,C328,C358,C359,C360,C361

Level	Part No.	Description	Specification	Qty	Reference
	PF01442	AMX-140FX	AMX-140FX_ALTO_230V_歐規_無		Revised:2005/8/18
0006	CB00042	electrolytic capacitor	47uF/63V 105 LZ 8*11mm	10	C21,C22,C24,C25,C41,C44,C48,C49,C91,C92
0007	CB00043	electrolytic capacitor	47uF/100V 10*12mm	4	C401,C402,C406,C407
0008	CB00052	electrolytic capacitor	100uF/100V 13*21mm	1	C405
0009	CB00056	electrolytic capacitor	220uF/25V 8*11mm	2	C403,C404
0010	CB00074	electrolytic capacitor	1000uF/10V 8*11mm	5	C23,C26,C50,C51,C99
0011	CB00070	electrolytic capacitor	1000uF/16V 10*16mm	1	C400
0012	CB00073	electrolytic capacitor	1000uF/35V 13*20mm	2	C408,C409
0013	CF00054	metal-film capacitor MSC	0.012uF/63V ±5% CASE01	16	C155,C156,C157,C158,C159,C160,C161,C162,C171,C172,C173,C174,C175,C176,C177,C178
0014	CF00021	metal-film capacitor MSC	0.018uF/63V 5% CASE01	16	R131,R132,R133,R134,R135,R136,R137,R138,R163,R164,R165,R166,R167,R168,R169,R70
0015	CF00023	metal-film capacitor MSC	0.033uF/63V 5% CASE01	16	C139,C140,C141,C142,C143,C144,C145,C146,C147,C148,C149,C150,C151,C152,C153,C154
0017	HA01512	row-wire connector wiring	9P(male)-9P(female) 220	1	CN4
0018	HC00183	DC jack	KJ-36-S 3.5	1	CN5
0019	HC00473	connector	2.45mm 180° 2*8P B25-2*8BG1(B)H=5mm	1	CN6
0020	SA00094	rectifier diode	1N4002/100V	4	D40,D41,D44,D45
0021	HI00195	rotary switch	SDB161PVB15.5F-1-4-16-16PC	2	EN1,EN2
0022	SA00052	L.E.D	3 round(green)long foot 26	21	LD7,LD10,LD11,LD12,LD13,LD14,LD15,LD16,LD17,LD18,LD19,LD22,LD23,LD24,LD25,LD26,LD27,LD28,LD29,LD30,LD31
0023	SA00053	L.E.D	3 round(red)long foot 26mm	10	LD1,LD2,LD3,LD4,LD5,LD6,LD8,LD21,LD33,LD54
0024	SA00054	L.E.D	3m/m round(yellow)long foot 26	2	LD20,LD32
0025	NI01782	LED spacer support	LEDS-11 11mm	32	
0026	NI01776	LED spacer support	LED-3 3mm	1	LD7
0027	RA00159	fixed resistor 1/4W	10 Mr type	1	R443
0028	RA00174	fixed resistor 1/4W	47 M type	2	R346,R347
0029	RA00185	fixed resistor 1/4W	120 M type	2	R350,R353
0030	RA00250	fixed resistor 1/4W	20K M type	1	R440
0031	RA00505	precise resistor 1/4W	6.81K M type	10	R15,R16,R17,R18,R42,R43,R45,R70,R72,R91
0032	HI00161	relay	RY-5W-K,5V	1	RL1
0033	HC00263	connector(male)	2P 2.5mm 90°	2	SW5,SW6
0034	HI00162	push-button switch	2 paragraphs 6p PS-22E8552L	6	SW1,SW2,SW3,SW4,SW9,SW10
0035	HI00157	push-button switch	PS-22E85NL(NON-LOCK)(2*3)	1	SW11
0036	SD00074	integrated circuit	L7805CV(TO-220)(ST)	1	TR20
0037	SD00077	integrated circuit	L7815CV(TO-220)(ST)(MOROCCO)	1	TR21
0038	SD00079	integrated circuit	L7915CV(TO-220)(ST)	1	TR22
0039	SB00043	transistor	TIP122(ST)	1	TR23
0040	SD00007	integrated circuit	BA15218N (M5218L substitute)	2	U28,U29
0041	RC00296	potentiometer	O10K RV09BC-40-30F-02C10K	5	VR1,VR9,VR17,VR25,VR33
0042	RC00233	potentiometer	B50K RV09BC-40-30F-B50K-0C	12	VR2,VR3,VR4,VR10,VR11,VR12,VR18,VR19,VR20,VR26,VR27,VR28
0043	RC00236	potentiometer	B50K RV112BC-40-30A-B50K-0C	6	VR34,VR35,VR36,VR41,VR42,VR43
0044	RC00235	potentiometer	W50K RV09BC-40-30F-W50K-0C	21	VR5,VR6,VR7,VR8,VR13,VR14,VR15,VR16,VR21,VR22,VR23,VR24,VR29,VR30,VR31,VR32,VR37,VR38,VR44,VR45,VR52
0045	RC00237	potentiometer	W50K RV112BC-40-30A-W50K-0C	8	VR39,VR40,VR46,VR47,VR48,VR49,VR50,VR53
0046	RC00369	potentiometer(A10K-41 stage)	W50K RV16A01-30-25F-W50K-3F97	1	VR51
0047	HC00392	balance MIC jack	JY-5030-030G 180°	2	X26,X27
0048	HC00126	balance MIC jack	JY-5042-030G female plug 180°	5	X5,X7,X9,X11,X13
0049	HC00125	MIC jack	JY-6351G-02-250	24	X1,X2,X3,X4,X6,X8,X10,X12,X14,X15,X16,X17,X18,X19,X20,X21,X22,X23,X24,X25,X28,X29,X30,X32
0050	HC00403	RCA jack	SCP6873NS3232T2 4P	1	X31

	PF01442	AMX-140FX	AMX-140FX_ALTO_230V_歐規_無		Revised:2005/8/18
Level	Part No.	Description	Specification	Qty	Reference
0051	SA00127	zener diode	1/2W 47V 1N5261	1	ZD1
0052	HA01825	wire	100 red	1	
0053	HA01828	P.V.C single wave wired UL101	230 green	1	
0054	HK00826	PC board	P-AMX-140FX-AI	1	
0001	HA01920	jump	6mm	221	J7,J8,J9,J10,J11,J12,J13,J14,J15,J16,J17,J18,J19,J20,J21,J22,J23,J25,J27,J28,J29,J30,J31,J32,J33,J34,J35,J36,J37,J38,J39,J40,J41,J43,J44,J46,J50,J51,J52,J53,J54,J55,J59,J61,J62,J63,J64,J65,J66,J67,J68,J69,J70,J71,J72,J73,J74,J75,J76,J77,J78,J79,J80,J81,J82,J83,J84,J85,J86,J87,J88,J89,J90,J91,J92,J93,J94,J95,J96,J97,J98,J99,J100,J101,J102,J103,J104,J105,J106,J107,J108,J109,J110,J111,J112,J113,J114,J115,J116,J117,J118,J119,J120,J121,J122,J123,J124,J125,J126,J127,J128,J129,J130,J131,J132,J133,J134,J135,J136,J137,J138,J139,J140,J141,J142,J143,J144,J145,J146,J147,J148,J149,J151,J152,J153,J154,J155,J156,J157,J158,J159,J160,J161,J162,J163,J164,J165,J166,J167,J168,J169,J170,J171,J172,J173,J174,J175,J176,J177,J178,J179,J180,J181,J182,J183,J185,J186,J187,J188,J189,J191,J192,J193,J194,J197,J198,J199,J200,J201,J202,J203,J204,J205,J206,J207,J208,J209,J210,J211,J212,J214,J215,J216,J218,J221,J222,J223,J224,J225,J226,J227,J228,J229,J230,J231,J232,J233,J234,J235,J236,J237,J238,J241,J242,J243,J244,J248,J254,J265,J276,J288
0002	HA01922	jump	8mm	30	J24,J26,J57,J184,J196,J246,J247,J249,J250,J251,J253,J255,J256,J257,J258,J259,J260,J261,J263,J264,J266,J267,J268,J269,J270,J272,J275,J287,J293,J314
0003	HA01928	jump	12mm	7	J195,J262,J271,J273,J300,J309,J310
0004	HA01931	jump	16mm	48	J42,J45,J47,J48,J49,J56,J58,J60,J150,J190,J213,J217,J219,J220,J245,J252,J274,J277,J278,J279,J280,J281,J282,J283,J284,J285,J286,J289,J290,J291,J292,J294,J295,J296,J297,J298,J299,J301,J302,J303,J304,J305,J306,J307,J308,J311,J312,J313
0005	HK00822	PC board	P-AMX-140FX-SMD	1	
0001	HB01112	PCB	AMX-140FX_VER040504	1	
0002	RE00011	SMD resistor networks 1/16W	680 *4 ±5% 8P 0603	2	AR1,AR2
0003	CI00051	SMD ceramic capacitor 0603	22PF/50V NPO ±5%(TDK)	64	C27,C28,C29,C30,C31,C32,C33,C34,C43,C46,C47,C52,C53,C54,C55,C57,C58,C59,C60,C66,C67,C68,C69,C110,C179,C180,C181,C182,C183,C184,C185,C186,C187,C188,C189,C190,C191,C192,C193,C194,C221,C222,C223,C224,C225,C226,C227,C228,C229,C230,C259,C260,C261,C262,C263,C264,C269,C270,C281,C282,C326,C327,C356,C357
0004	CI00055	SMD ceramic capacitor 0603	47PF/50V NPO ±5%(TDK)	5	C4,C11,C35,C36,C83
0005	CI00059	SMD ceramic capacitor 0603	100PF/50V NPO ±5%	14	C265,C266,C267,C268,C271,C272,C273,C274,C275,C276,C277,C278,C279,C280

	PF01442	AMX-140FX	AMX-140FX_ALTO_230V_歐規_無		Revised:2005/8/18
Level	Part No.	Description	Specification	Qty	Reference
0006	CI00075	SMD ceramic capacitor 0603	0.1uF/50V Y5V +80,-20%	65	C42,C63,C64,C65,C84,C85,C109,C201,C202,C203,C204,C205,C206,C207,C208,C209,C210,C211,C212,C213,C214,C215,C216,C217,C218,C219,C220,C287,C288,C289,C290,C291,C292,C293,C294,C295,C296,C297,C298,C299,C300,C301,C302,C303,C304,C305,C306,C307,C308,C309,C310,C311,C312,C313,C314,C315,C316,C317,C322,C324,C325,C335,C354,C355,C323
0007	CI00063	SMD ceramic capacitor 0603	470PF/50V NPO ±5 %	13	C1,C2,C3,C5,C6,C7,C8,C9,C10,C12,C13,C37,C82
0008	SE00008	SMD rectifier diode	DA204K/T-146	1	D1
0009	SE00011	SMD rectifier diode	RLS4148 0.5A (LL-34)	7	D9,D30,D31,D32,D42,D43,D33
0010	RD00059	SMD fixed resistor 1/10W	0.0 ±5% 0603	1	R445
0011	RD00355	SMD fixed resistor 1/10W	4.7 ±5% 0603	10	R1,R2,R6,R7,R13,R14,R37,R38,R39,R41
0012	RD00265	SMD fixed resistor 1/10W	27 ±5% 0603	5	R56,R57,R73,R74,R128
0013	RD00065	SMD fixed resistor 1/10W	47 ±5% 0603	2	R373,R374
0014	RD00346	SMD fixed resistor 1/10W	56 ±5% 0603	1	R354
0015	RD00068	SMD fixed resistor 1/10W	100 ±5% 0603	4	R377,R378,R395,R396
0016	RD00069	SMD fixed resistor 1/10W	120 ±5% 0603	17	R322,R323,R324,R325,R326,R327,R328,R329,R330,R331,R332,R333,R334,R335,R336,R337,R355
0017	RD00073	SMD fixed resistor 1/10W	220 ±5% 0603	2	R429,R430
0018	RD00076	SMD fixed resistor 1/10W	330 ±5% 0603	2	R359,R360
0019	RD00078	SMD fixed resistor 1/10W	470 ±5% 0603	5	R351,R352,R356,R357,R358
0020	RD00347	SMD fixed resistor 1/10W	510 ±5% 0603	1	R361
0021	RD00348	SMD fixed resistor 1/10W	620 ±5% 0603	1	R362
0022	RD00082	SMD fixed resistor 1/10W	820 ±5% 0603	1	R252
0023	RD00349	SMD fixed resistor 1/10W	910 ±5% 0603	16	R196,R197,R198,R199,R200,R201,R202,R203,R204,R205,R206,R207,R208,R209,R210,R211
0024	RD00083	SMD fixed resistor 1/10W	1.0K ±5% 0603	2	R342,R343
0025	RD00350	SMD fixed resistor 1/10W	1.1K ±5% 0603	8	R212,R213,R214,R215,R216,R217,R218,R219
0026	RD00351	SMD fixed resistor 1/10W	1.3K ±5% 0603	13	R136,R137,R138,R139,R140,R141,R142,R143,R145,R146,R147,R148,R363
0027	RD00085	SMD fixed resistor 1/10W	1.5K ±5% 0603	6	R264,R265,R266,R267,R268,R269
0028	RD00087	SMD fixed resistor 1/10W	2.0K ±5% 0603	1	R364
0029	RD00089	SMD fixed resistor 1/10W	2.7K ±5% 0603	2	R312,R317
0030	RD00092	SMD fixed resistor 1/10W	3.9K ±5% 0603	10	R256,R257,R258,R259,R260,R261,R262,R263,R303,R307
0031	RD00093	SMD fixed resistor 1/10W	4.7K ±5% 0603	21	R9,R44,R77,R78,R79,R80,R81,R82,R178,R180,R181,R184,R248,R249,R250,R251,R253,R254,R255,R313,R314
0032	RD00094	SMD fixed resistor 1/10W	5.1K ±5% 0603	15	R286,R287,R290,R291,R294,R295,R296,R299,R308,R309,R310,R311,R315,R316,R432
0033	RD00095	SMD fixed resistor 1/10W	5.6K ±5% 0603	1	R365
0034	RD00097	SMD fixed resistor 1/10W	6.8K ±5% 0603	26	R149,R150,R151,R152,R153,R154,R155,R156,R157,R158,R159,R160,R161,R162,R163,R164,R166,R167,R168,R169,R170,R171,R172,R173,R174,R175





Mechanical Parts List

Model No.		ALTO AMX-140FX		
NO	Item No	Item Description		pcs
1	MA04539	panel	AMX-140FX ALTO	1
2	MB03078	rear board	AMX-140	1
3	HI00026	power switch	RA12KKATOF 2P	1
4	HI00171	power switch	R612KKATOF1	1
5	NI01863	key	φ5.5*W10*7.5	7
6	NI02083	knob	φ10.5*18mm	18
7	NI02633	knob	φ10.5*18	8
8	NI02082	knob	φ10.5*18mm	6
9	NI02817	knob	φ10.5*18mm	2
10	NI02081	knob	φ10.5*18mm	7
11	NI02714	knob	φ10*13.5mm	5
12	NI00826	knob	φ12*18mm double color	6
13	NI02386	konb	φ14*13mm	2
14	NI02837	knob	φ35*11mm 534C	1
15	MG00041	screw	M3*6	24
16	MG00061	screw	M3*10	18
17	NI02836	LED lens	10*7*3mm AMX-140	1
18	ME00060	nut	JY-6351G-02-250	24
19	MF00061	washer	JY-6351G-02-250	24
20	MI01905	heat sink	AMX-140 2.0t*195.5*29*2mm	1
21	NI02249	insulate bean	TW-1(TO-220)	4
22	NC00005	silicone insulator	TO-220 square type	4
23	MG00162	screw	M3*8	4
24	MG00238	copper pillar	M3*6*0.5PH	3
25	MG00036	screw	M3*4	6
26	ME00015	nut	3m/m	4
27	NI02835	handle	269*33*26mm AMX-140 black	1
28	HK00821	PC board	P-AMX-140FX-DIP	1
29	HK00832	PC board	P-FX-DSP-DIP	1
30	HK01409	PC board	P-313123-DIP(AMX-140FX)	1
31				
32				
33				
34				
35				
36				
37				
38				
39				
40				

Mechanical Parts List

Model No.		ALTO AMX-140		
NO	Item No	Item Description		pcs
1	MA04539	panel	AMX-140FX ALTO	1
2	MB03078	rear board	AMX-140	1
3	HI00026	power switch	RA12KKATOF 2P	1
4	HI00171	power switch	R612KKATOF1	1
5	NI01863	key	φ5.5*W10*7.5	7
6	NI02083	knob	φ10.5*18mm	18
7	NI02835	handle	269*33*26mm AMX-140 black	1
8	NI02082	knob	φ10.5*18mm	6
9	NI02817	knob	φ10.5*18mm	2
10	NI02081	knob	φ10.5*18mm	15
11	NI02714	knob	φ10*13.5mm	5
12	NI00826	knob	φ12*18mm double color	6
13	HK00821	PC board	P-AMX-140FX-DIP	1
14	NI02837	knob	φ35*11mm 534C	1
15	MG00041	screw	M3*6	24
16	MG00061	screw	M3*10	18
17	NI02836	LED lens	10*7*3mm AMX-140	1
18	ME00060	nut	JY-6351G-02-250	23
19	MF00061	washer	JY-6351G-02-250	23
20	MI01905	heat sink	AMX-140 2.0t*195.5*29*2mm	1
21	ME00015	nut	3m/m	3
22	NC00005	silicone insulator	TO-220 square type	3
23	MG00162	screw	M3*8	3
24				
25				
26				
27				
28				
29				
30				
31				
32				
33				
34				
35				
36				
37				
38				
39				
40				