

Service Manual

Model: ALTOPATCH

MULTI-FUNCTION 48-POINT PATCHBAY



www.altoproaudio.com

Version: 1.1

CONTENTS

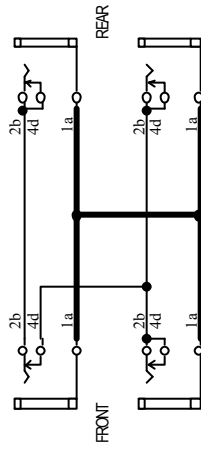
1. Specification	1
2. Block Diagram	1
3. Schematic Diagram	1
4. Printed Circuit Board	1
5. Wiring Diagram	0
6. Test Procedure	0
7. Electrical Parts List	2
8. Exploded Views & Mechanical Parts List	2
9. Troubleshooting	0
10. Notes	0

1.Specifications

PHYSICAL

Dimension (WxHxD)	483x44x85mm (19.02"x1.73"x3.23")
Net weight	Approx. 1.9kg (Approx. 4.19lb)
Connectors	1/4" jack unbalanced

Block Diagram



4

3

2

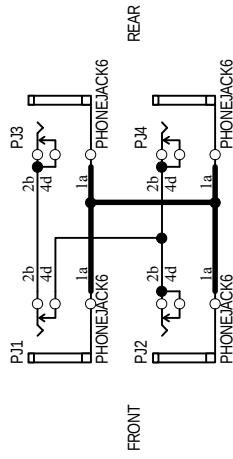
1

D

C

B

A



Title: ALTO MOBILE : ALTOPATCH MAIN BOARD

Size: A4	Model No: ALTOPATCH	Revision: VER020423
Date: 18-May-2002	File: ALTOPATCH.Sch	Sheet 1 of 1
		Drawn By: C.CLIN

3

2

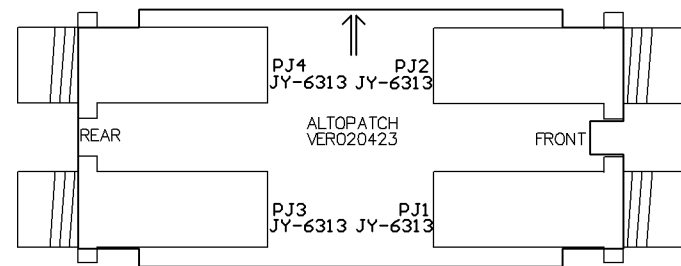
1

D

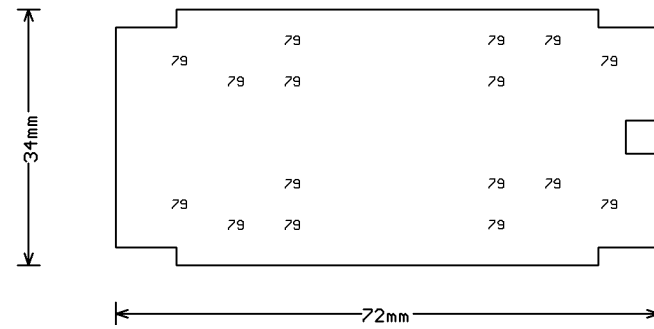
C

B

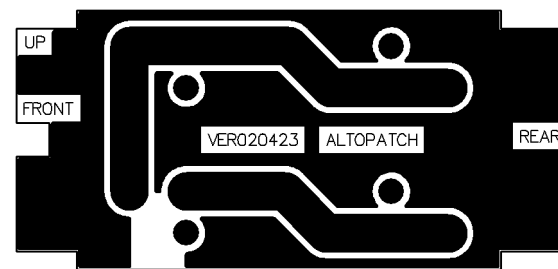
A



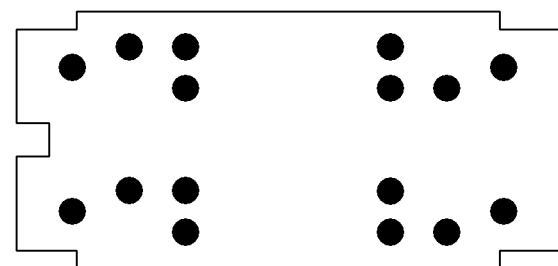
ALTOPATCH Top Silkscreen



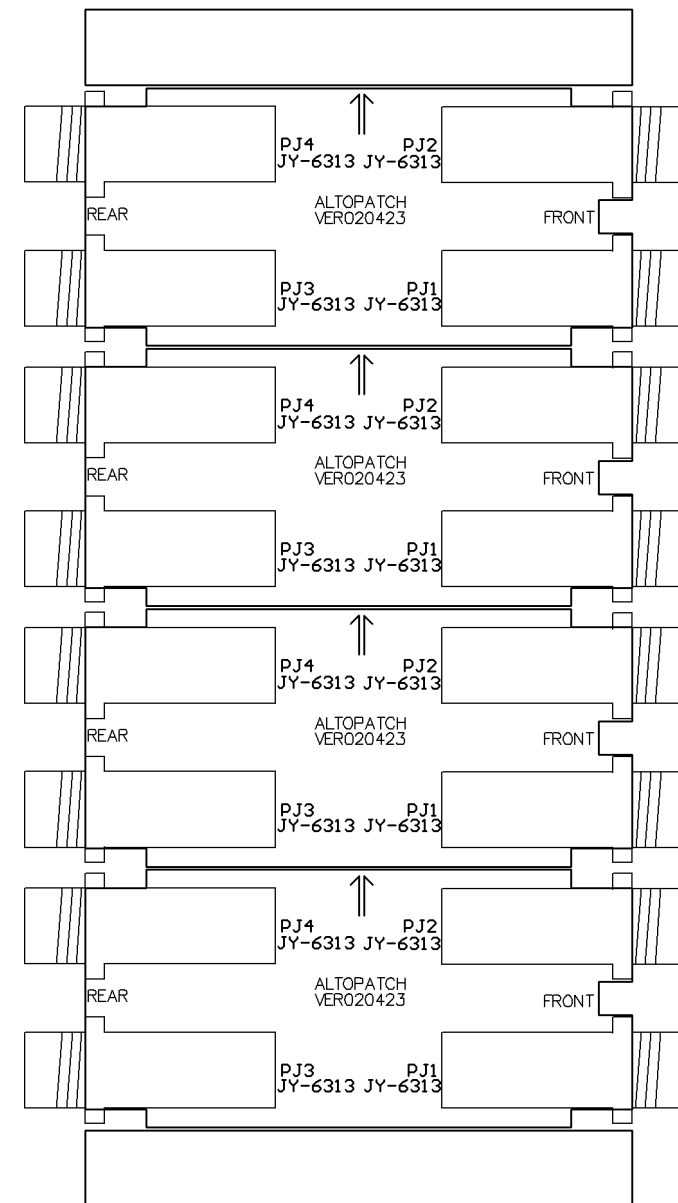
ALTOPATCH Drill Drawing

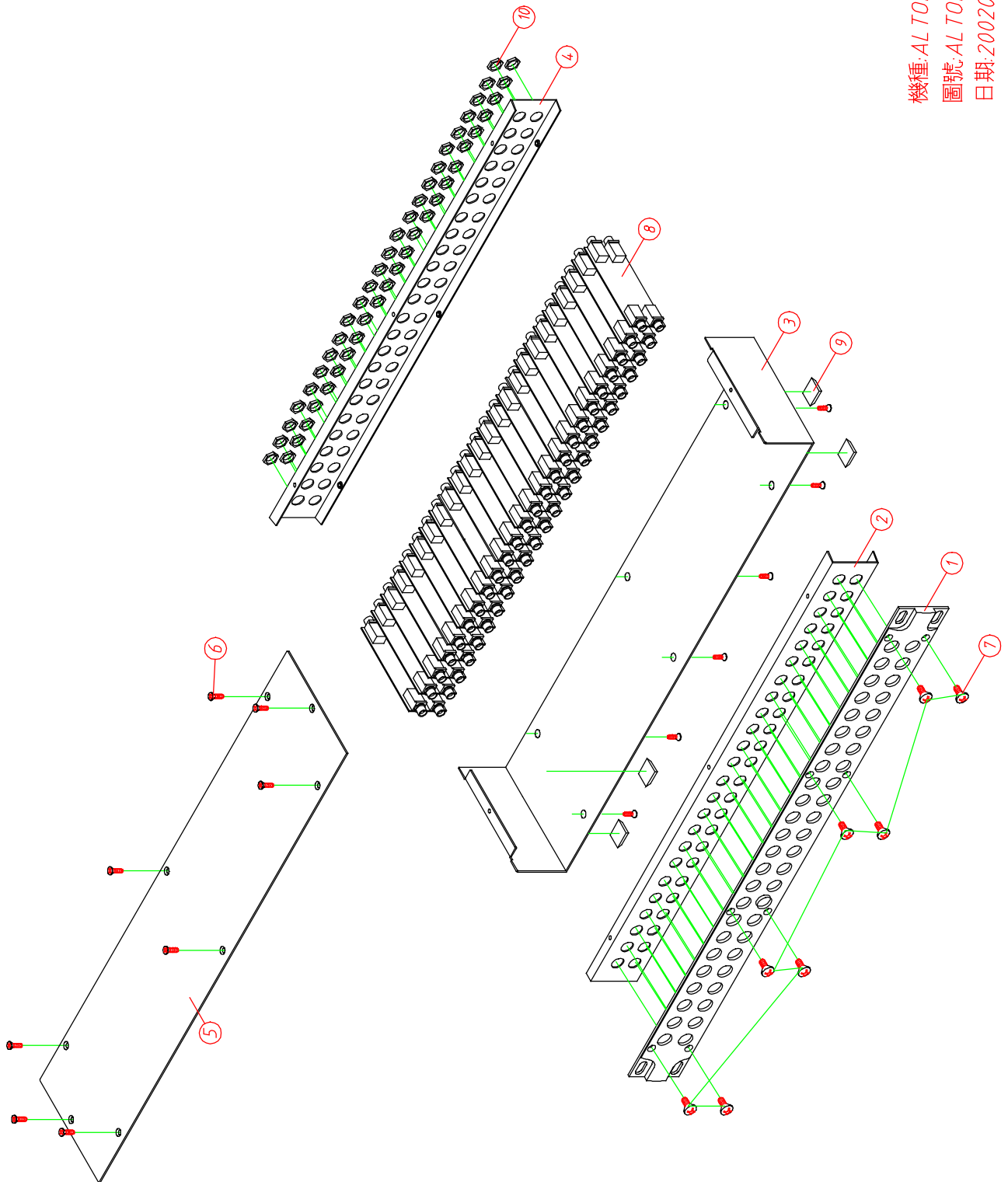


ALTOPATCH Bottom Layer



ALTOPATCH Bottom Solder Mask





機種:AL TOPATCH
圖號:AL TOPATCH-00
日期:20020709

Mechanical Parts List				
Model No.		ALTO ALTOPATCH		
NO	Item No	Item Description		pcs
1	MA03287	panel	aPATCH	1
2	MI01363	front board	ALTOPATCH	1
3	MB02211	rear board	ALTOPATCH	1
4	MB02199	rear board	ALTOPATCH	1
5	MC00411	top cover	ALTOPATCH	1
6	MG00025	screw	M3*6	14
7	MG00281	screw	M3*6	8
8	HB00697	PC board	ALTOPATCH(1*4)_VER020423	24
9	NI00501	foot cushion	12.7*9*3t(SF-004)	4
10	ME00059	socket nut	JY-6314-02	48