

Service Manual

Model: ALTOPATCH.B

MULTI-FUNCTION 48-POINT PATCHBAY



www.altoproaudio.com

Version: 1.1

CONTENTS

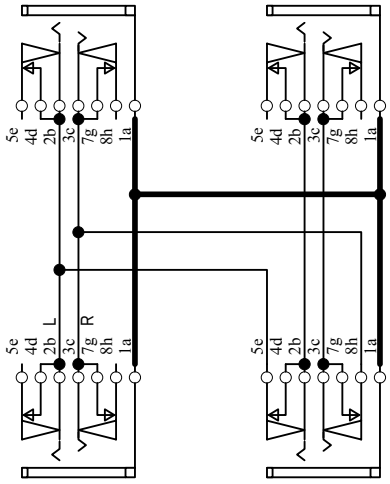
1. Specification	1
2. Block Diagram	1
3. Schematic Diagram	1
4. Printed Circuit Board	1
5. Wiring Diagram	0
6. Test Procedure	0
7. Electrical Parts List	2
8. Exploded Views & Mechanical Parts List	2
9. Troubleshooting	0
10. Notes	0

1.Specifications

PHYSICAL

Dimension (WxHxD)	483x44x85mm (19.02"x1.73"x3.23")
Net weight	Approx. 1.9kg (Approx. 4.19lb)
Connectors	1/4" TRS jack balanced

Block Diagram



D

C

B

A

D

C

B

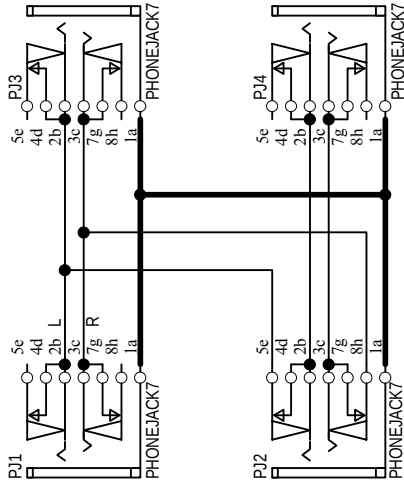
A

D

C

B

A



Titel ALTO : ALTOPATCH.B BALANCED PATCHBAY

Size	A4	Model No:	ALTOPATCH.B	Revision	VER030727
------	----	-----------	-------------	----------	-----------

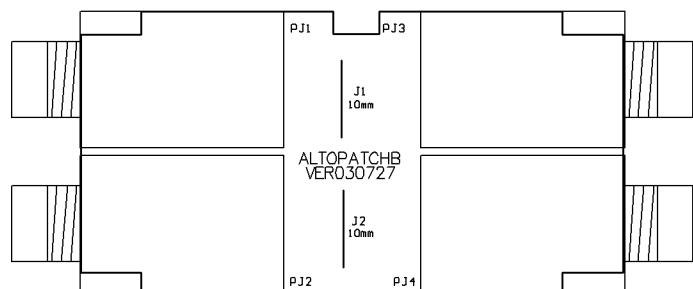
Date:	27-Jul-2003	Sheet	1 of 1
File:	ALTOPATCHB.SCH	Drawn By:	C.C.LIN

D

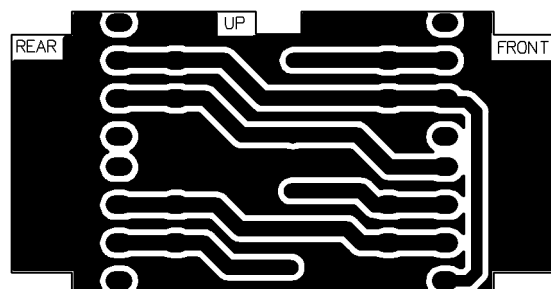
C

B

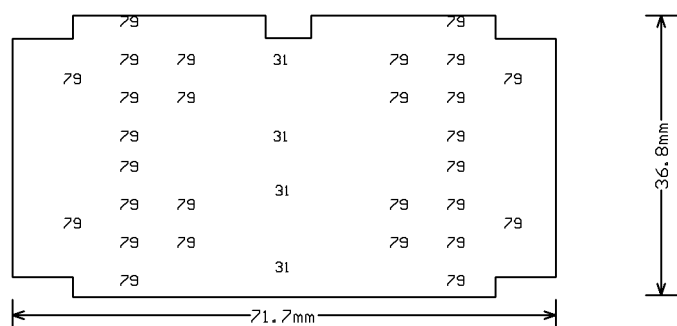
A



ALTOPATCHB Top Silkscreen

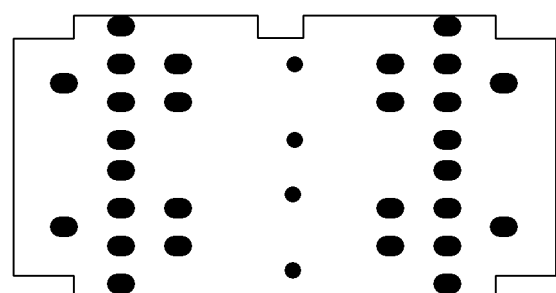


ALTOPATCHB Bottom Layer

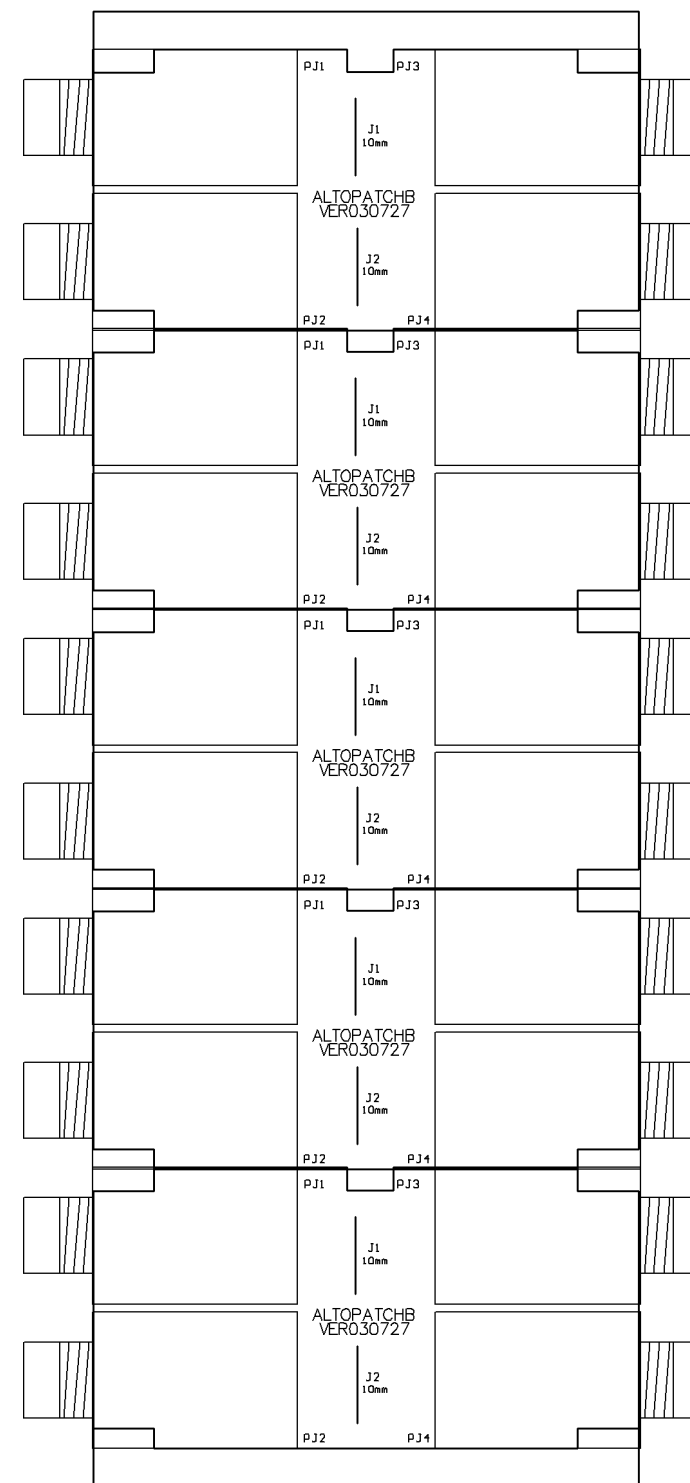


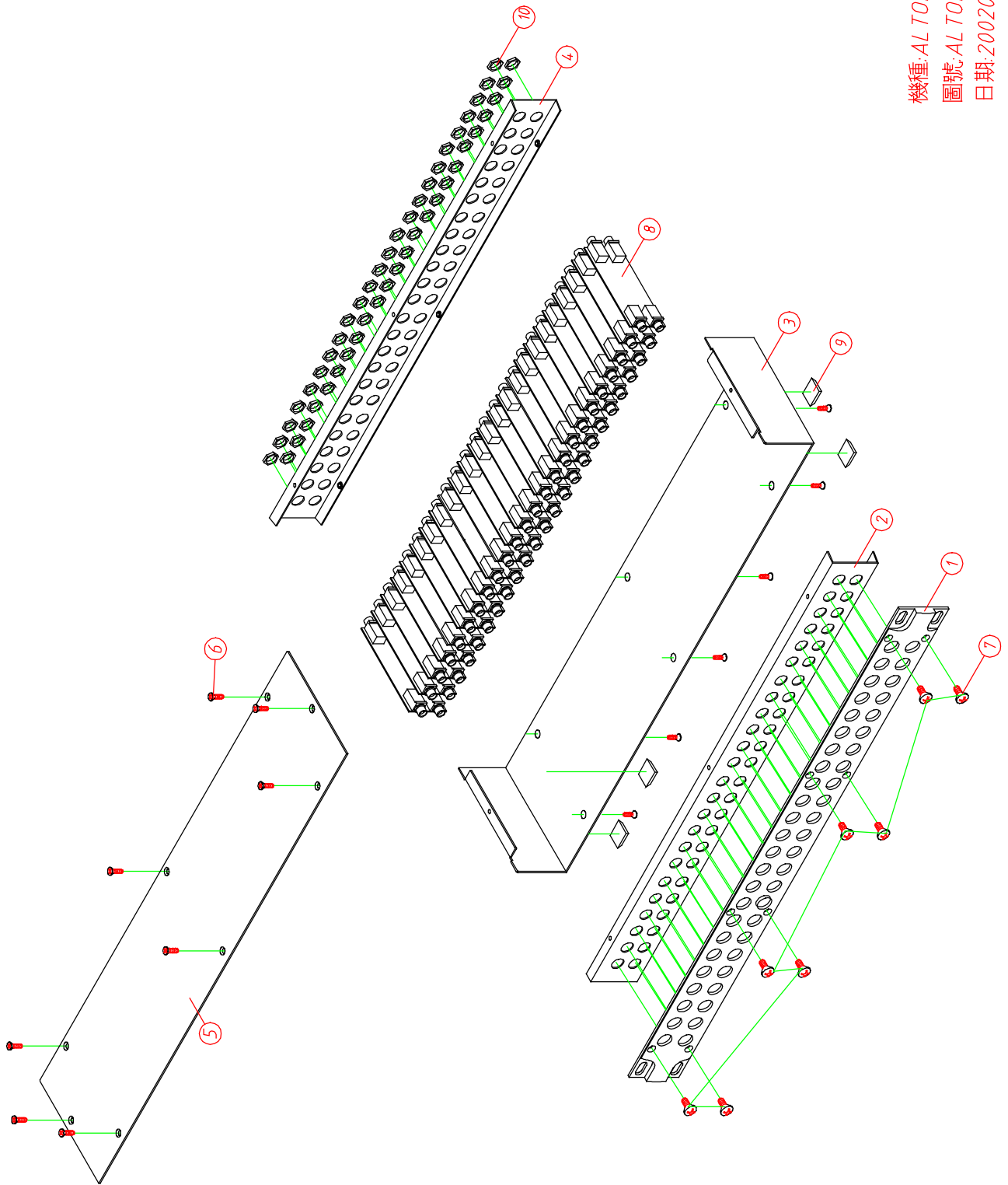
ALTOPATCHB Drill Drawing

Tool	Hole Size	Hole Count Plated
T1	31mil (0.7874mm)	4
T2	79mil (2.0066mm)	28
Totals		32



ALTOPATCHB Bottom Solder Mask





Mechanical Parts List				
Model No.		ALTO ALTOPATCH.B		
NO	Item No	Item Description		pcs
1	MA03287	panel	aPATCH	1
2	MI01363	front board	ALTOPATCH	1
3	MB02211	rear board	ALTOPATCH	1
4	MB02199	rear board	ALTOPATCH	1
5	MC00411	top cover	ALTOPATCH	1
6	MG00025	screw	M3*6	14
7	MG00281	screw	M3*6	8
8	HB00997	PC board	ALTOPATCHB(1*5)_VER030727	24
9	NI00501	foot cushion	12.7*9*3t(SF-004)	4
10	ME00059	socket nut	JY-6314-02	48