

Service Manual

Model: DI4

4-CH DIRECT INJECT BOX



www.altoproaudio.com

Version: 1.1

CONTENTS

- 1. Specification**
- 2. Block Diagram**
- 3. Schematic Diagram**
- 4. Printed Circuit Board**
- 5. Wiring Diagram**
- 6. Test Procedure**
- 7. Electrical Parts List**
- 8. Exploded Views & Mechanical Parts List**
- 9. Notes**

1. SPECIFICATIONS (DI4)

Inputs	1/4" jack unbal. In/ Link Out XLR unbalanced In
Input Impedance	max 220 kOhm
Maximum Input level	+13/+33/+53 dBm

Output	XLR balanced Out
Load Impedance	>600 Ohm
Max Output Level	+18 dBm

System specifications

Bandwidth(100kOhm)	23Hz to 105Khz(3dbm)
Bandwidth(600Ohm)	23Hz to 60Khz(3dbm)
Bandwidth(High Cut)	23Hz to 8Khz(3dbm)

Noise Level	-105dBm
THD+N @ 1 kHz / 10 dBm	< 0.01 %

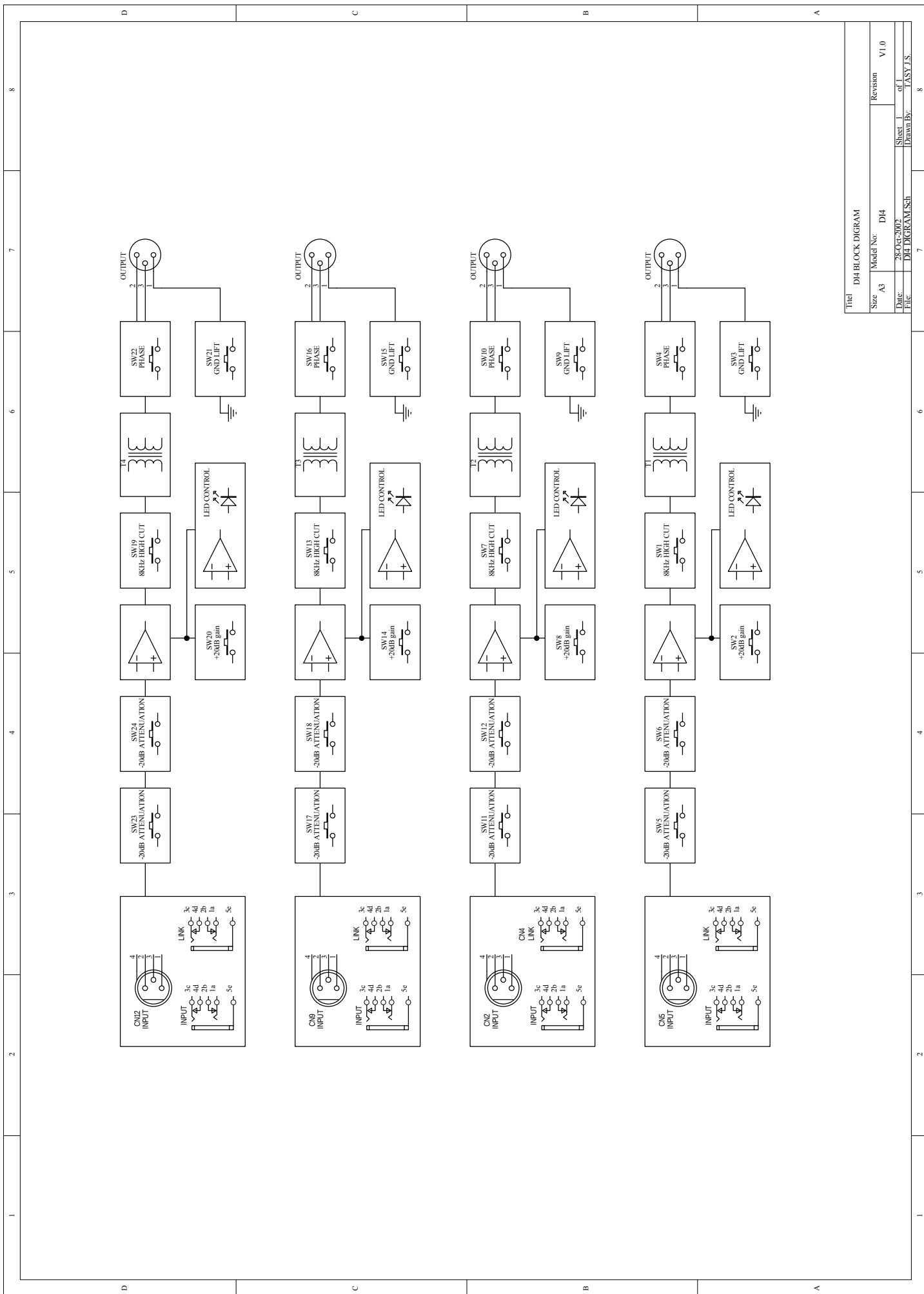
Power supply

Connector type	3-pole IEC,grounded
Type	Servo controlled,stabilized
Mains supply	115V or 230V 50/60Hz
Power Rating	max. 10W
Fuse	100-120V~: T200mA H 200-240V~: T100mA H

Dimensions 483 mm x 197.5 mm x 44.2 mm

Weight ca. 3.7 Kg

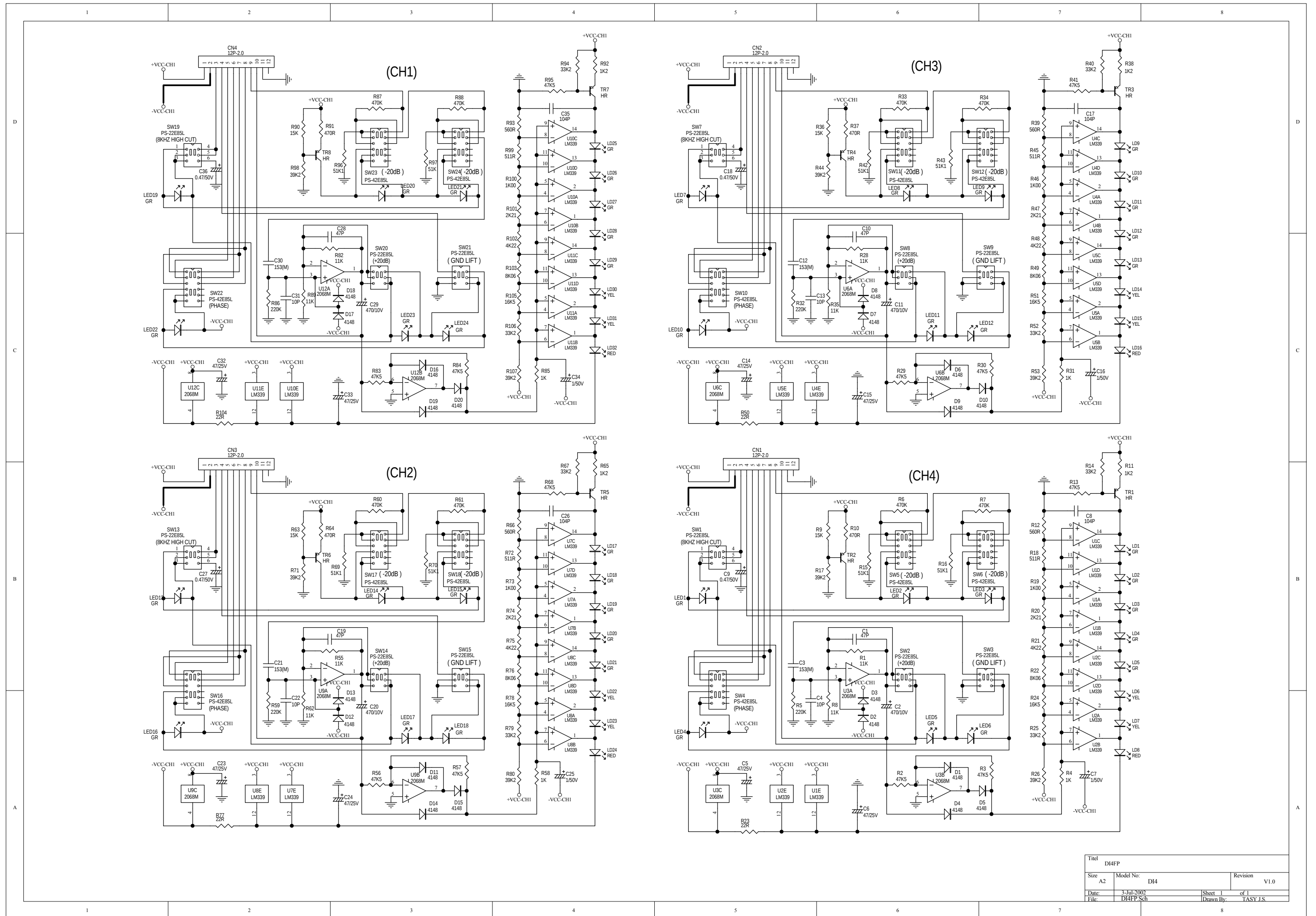
2.Block Diagram



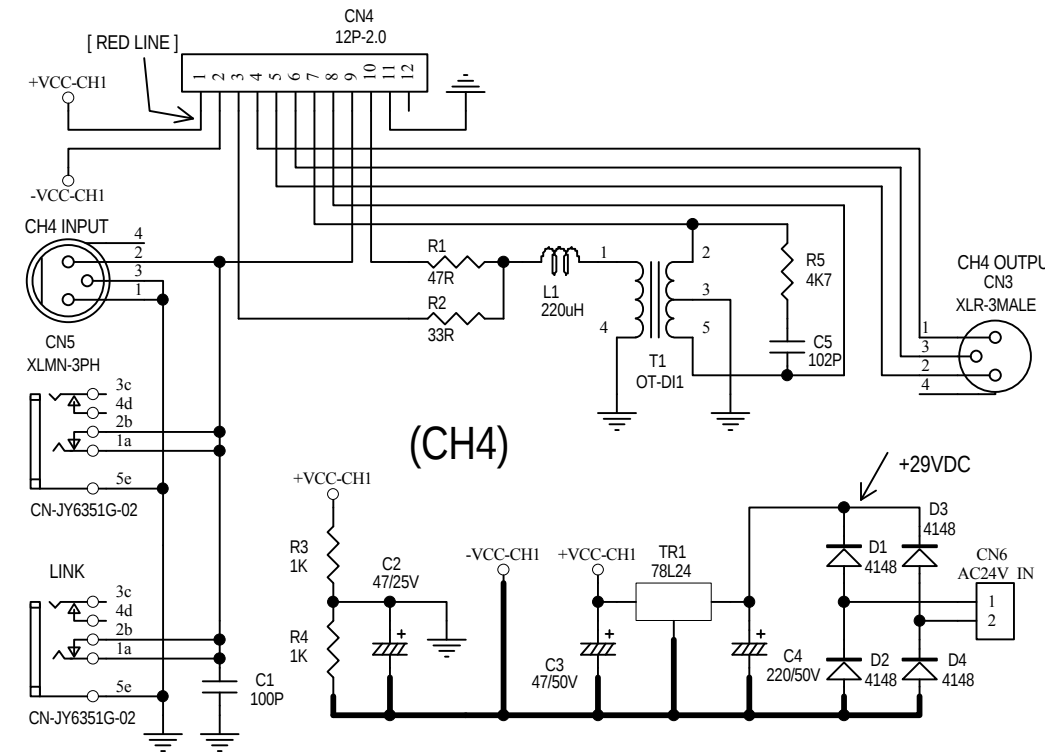
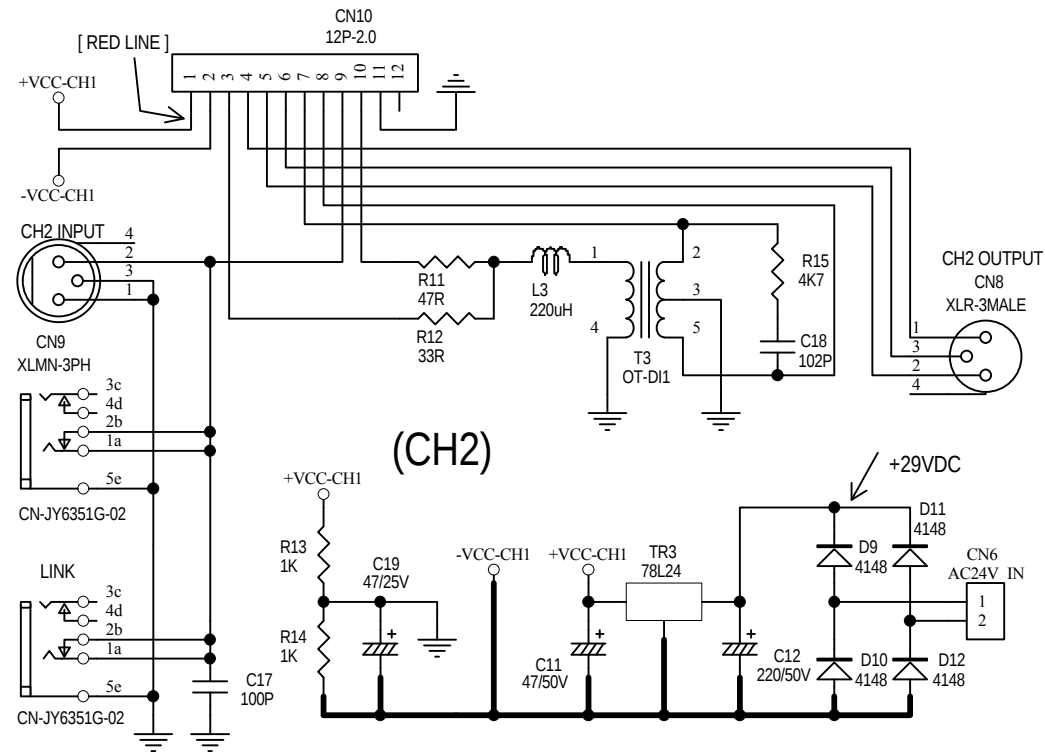
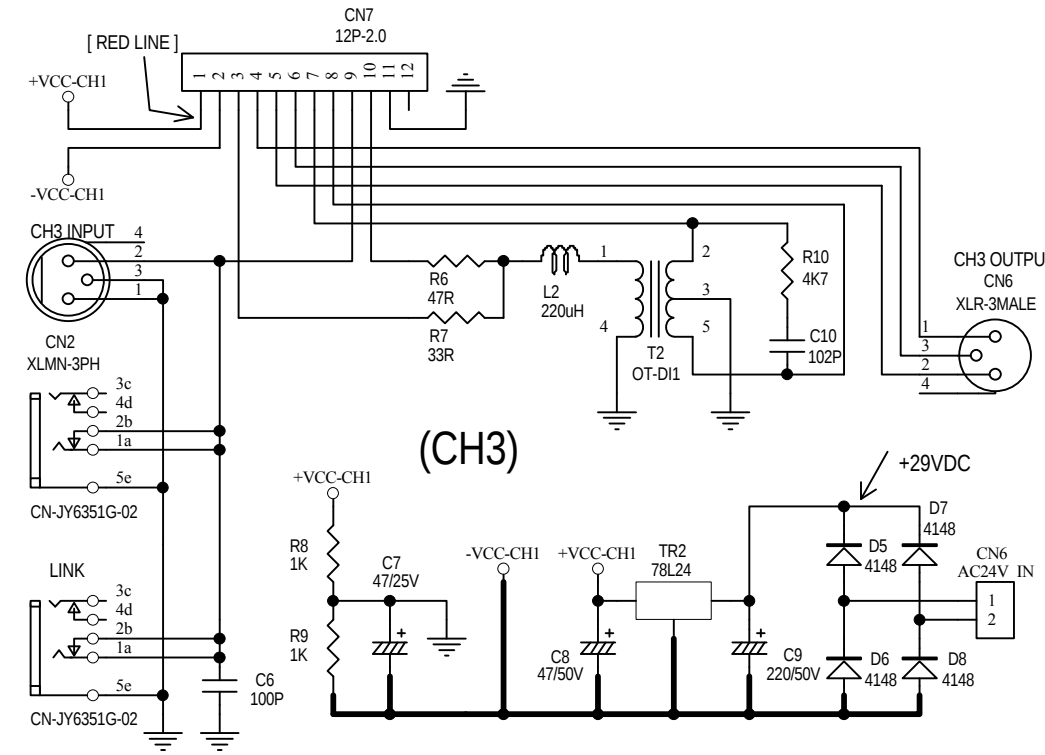
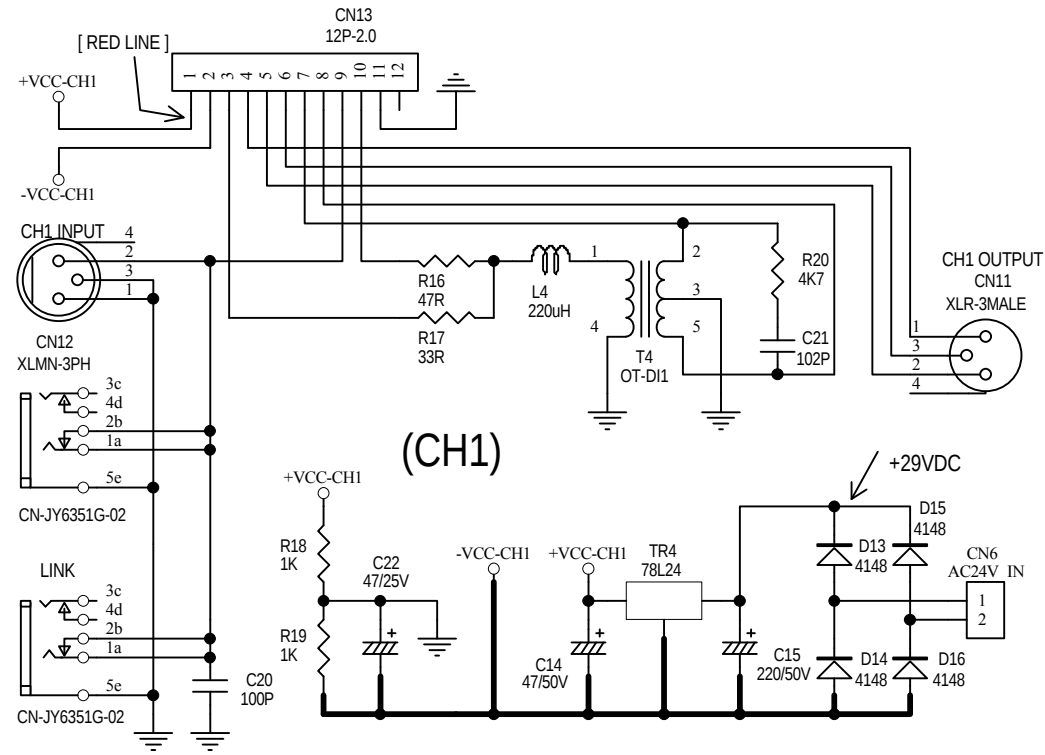
File: D14 BLOCK DIAGRAM

Size	A3	Model No.	D14	Revision	V1.0
Date	28-OCT-2002	Sheet	1	of	1
File	D14 DIAGRAM.Sch	Drawn By	LASYJ.S.		

3. Schematic Diagram



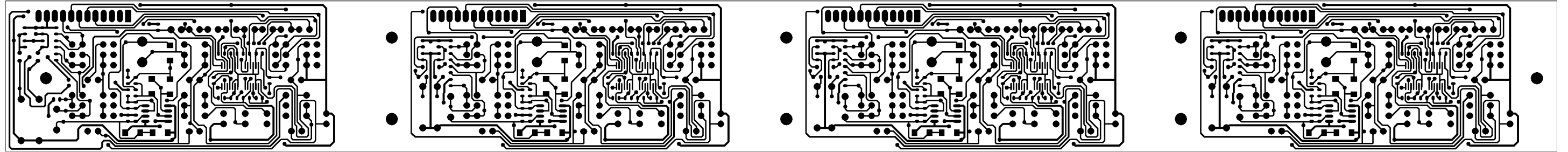
Title		D14FP	
Size	A2	Model No:	D14
Date:	3-Jul-2002	Revision	V1.0
File:	D14FP Sch	Sheet 1 of 1	Drawn By: TASY J.S.



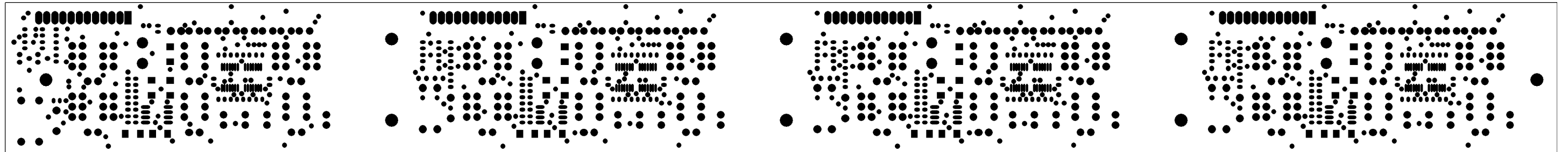
1. GND() ..
2. DC24V(); 4 , ..
3. ..

Titel		D14PU	
Size	A3	Model No:	D14
		Revision	v1.0
Date:	21-Jun-2002	Sheet	1 of 1
File:	D14PU.Sch	Drawn By:	TASY J.S.

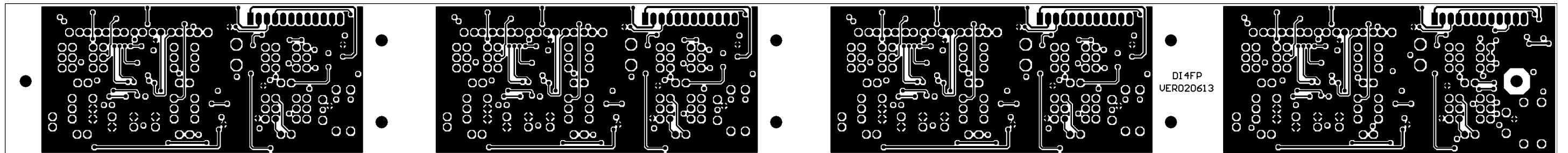
DI4FP PCB LAYOUT



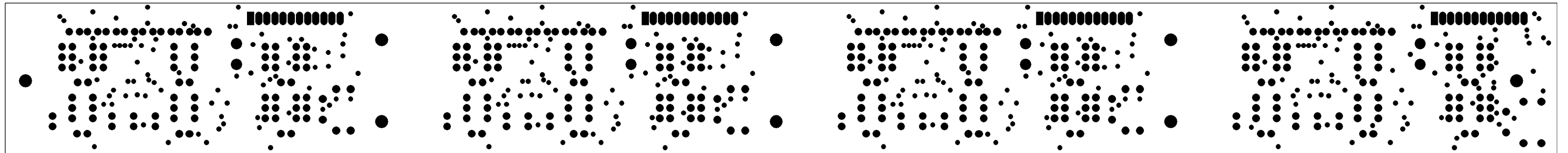
PCB : DI4FP Top Layer



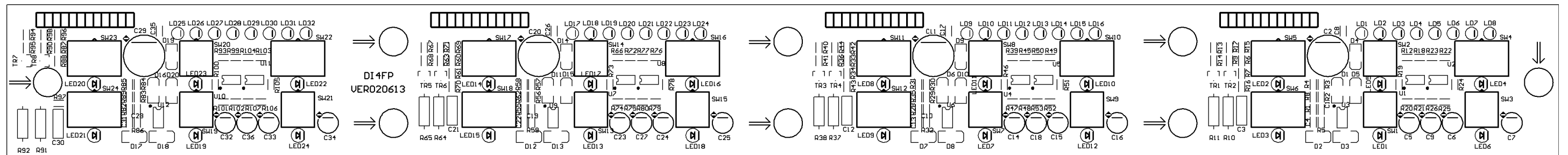
PCB : DI4FP Top Solder Mask



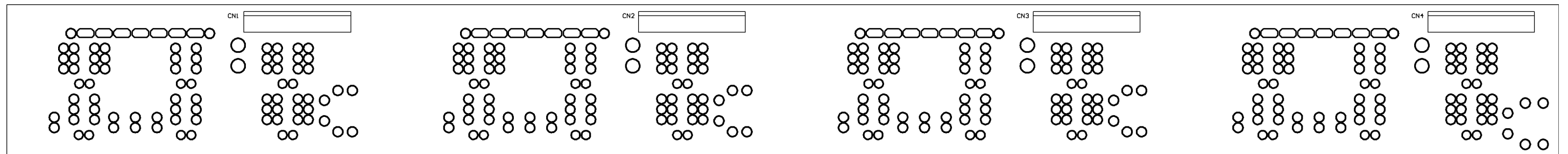
PCB : DI4FP Bottom Layer



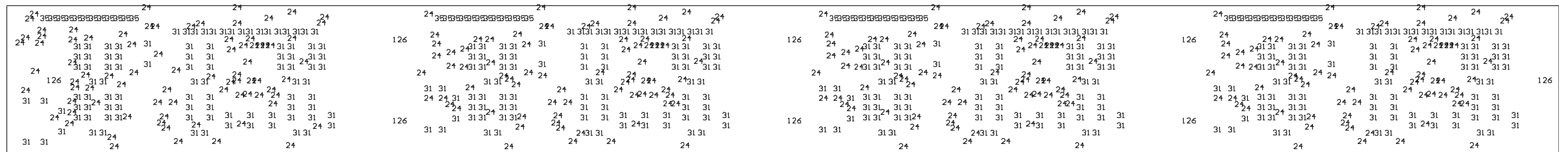
PCB : DI4FP Bottom Solder Mask



PCB : DI4FP Top Overlay



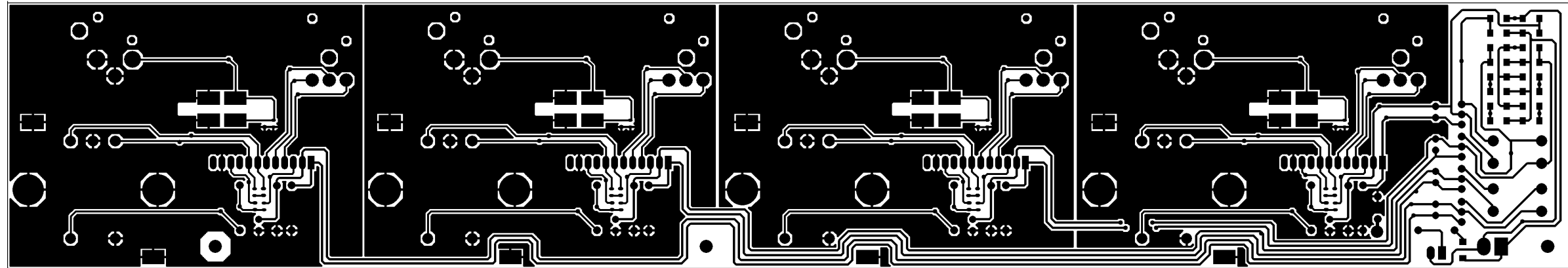
PCB : DI4FP Bottom Overlay



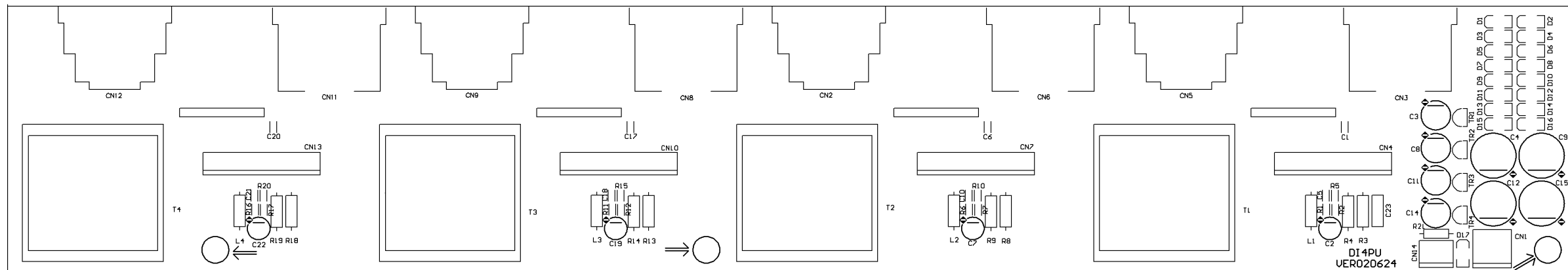
PCB : DI4FP Drill Drawing Plots

	Hole Size	Hole Count
	24mil (0.6mm)	308
	31mil (0.8mm)	392
	35mil (0.9mm)	48
	126mil (3.2mm)	8
	Totals	756

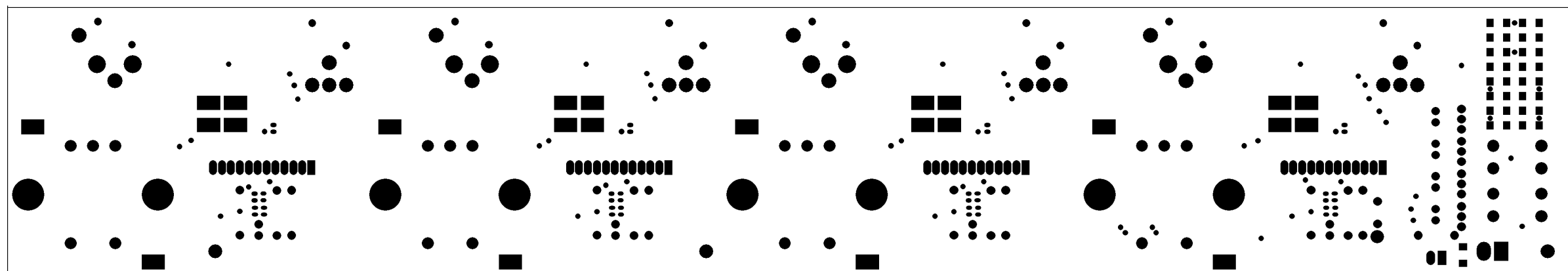
DI4FP PCB LAYOUT



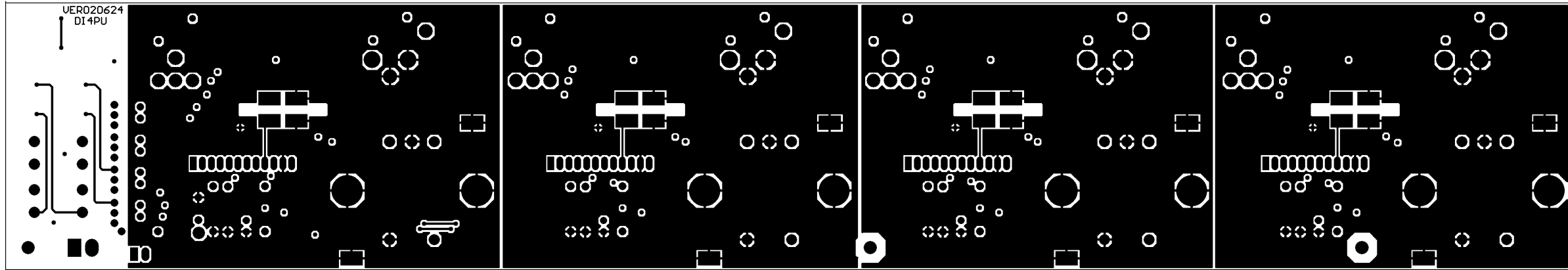
PCB : DI4PU Top Layer



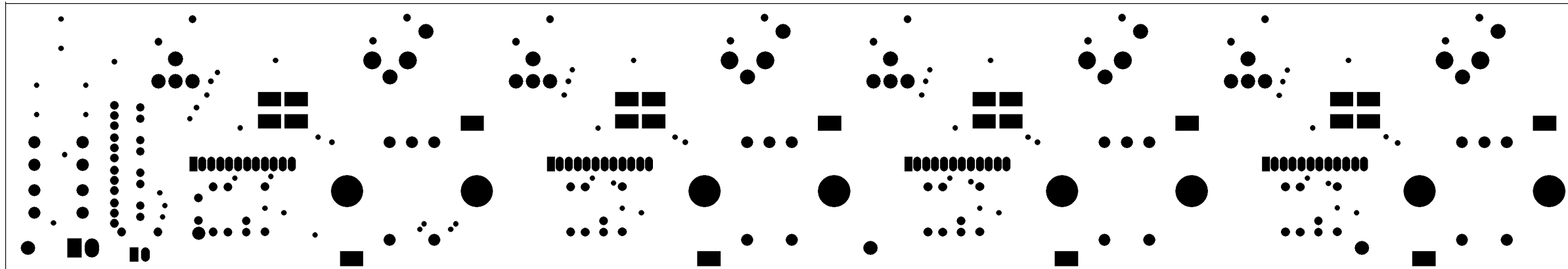
PCB : DI4PU Top Overlay



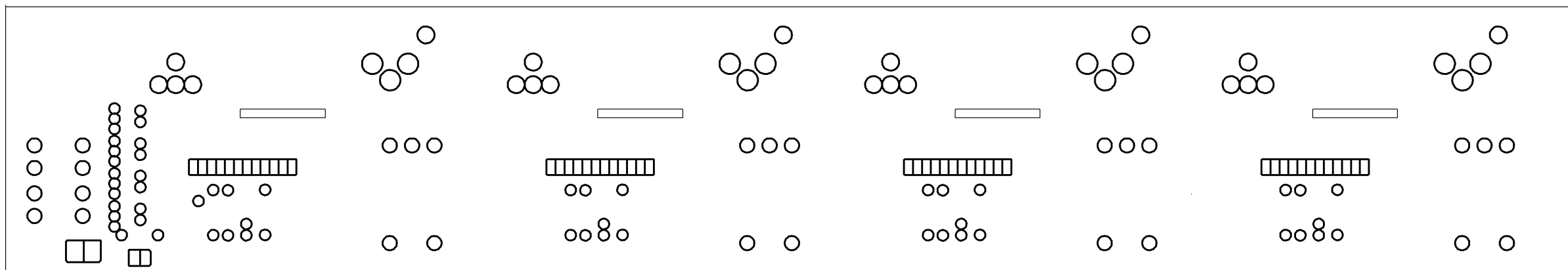
PCB : DI4PU Top Solder Mask



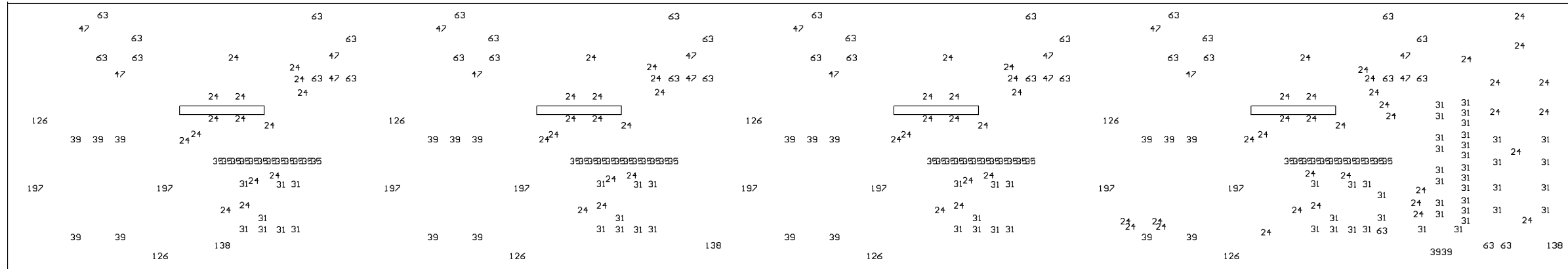
PCB : DI4PU Bottom Layer



PCB : DI4PU Bottom Solder Mask



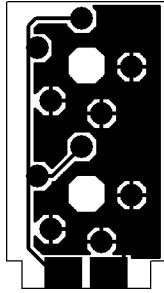
PCB : DI4PU Bottom Overlay



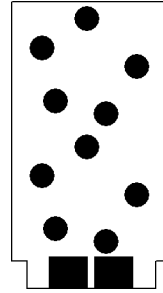
PCB : DI4PU Drill Drawing Plots

Hole Size	Hole Count
24mil (0.6mm)	303
31mil (0.8mm)	80
35mil (0.9mm)	64
39mil (1.0mm)	16
47mil (1.2mm)	6
55mil (1.4mm)	6
59mil (1.5mm)	1
63mil (1.6mm)	21
110mil (2.8mm)	2
Totals	499

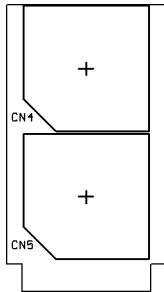
DI4IN PCB LAYOUT



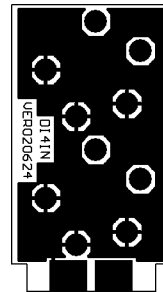
PCB : DI4IN Top Layer



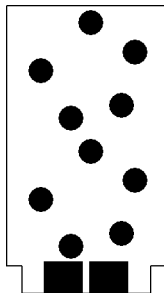
PCB : DI4IN Top Solder Mask



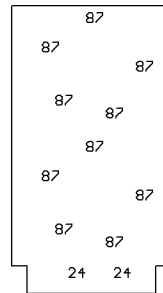
PCB : DI4IN Top Overlay



PCB : DI4IN Bottom Layer

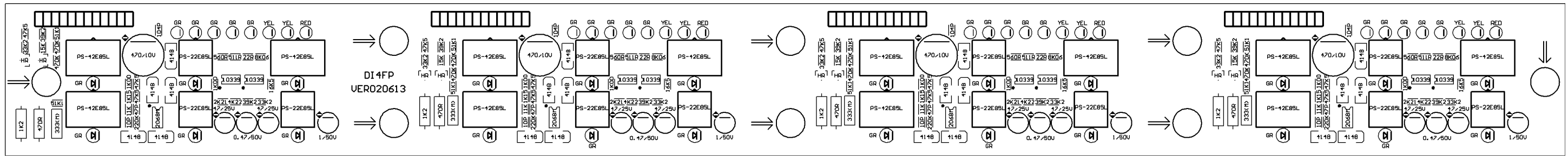
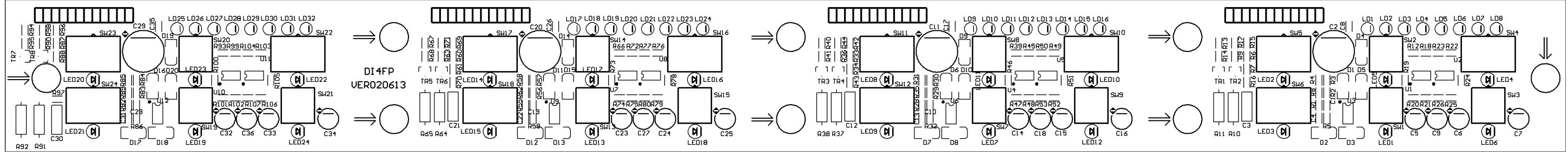


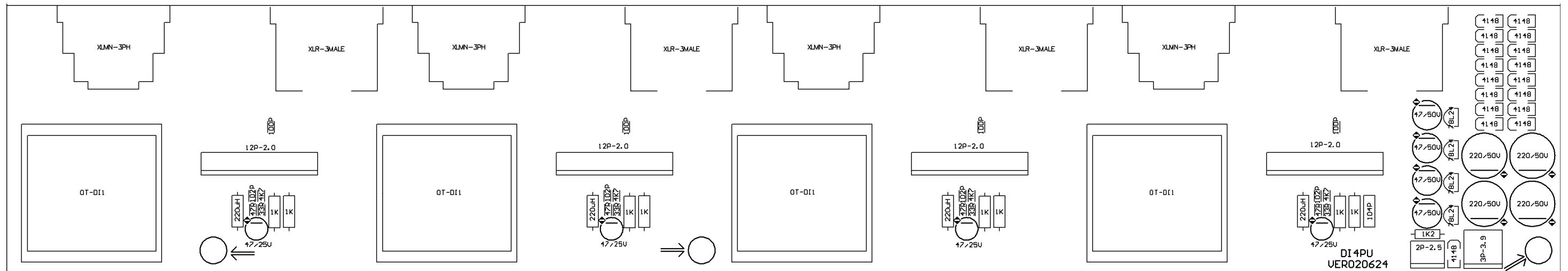
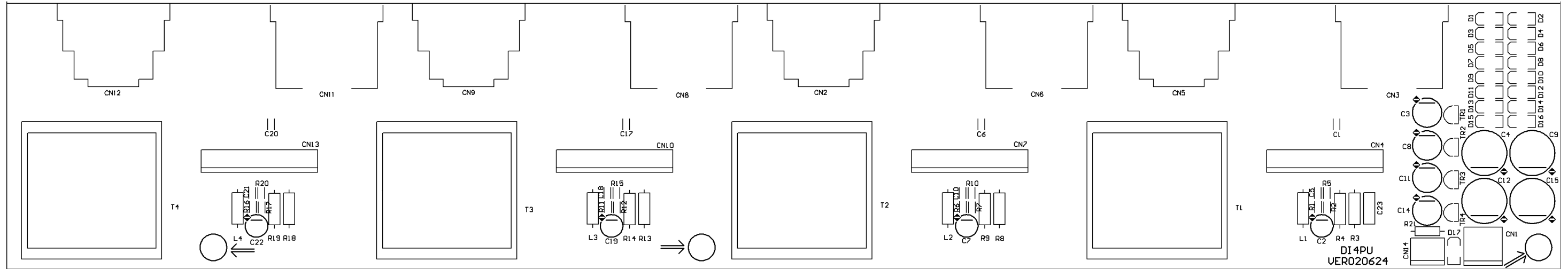
PCB : DI4IN Bottom Solder Mask



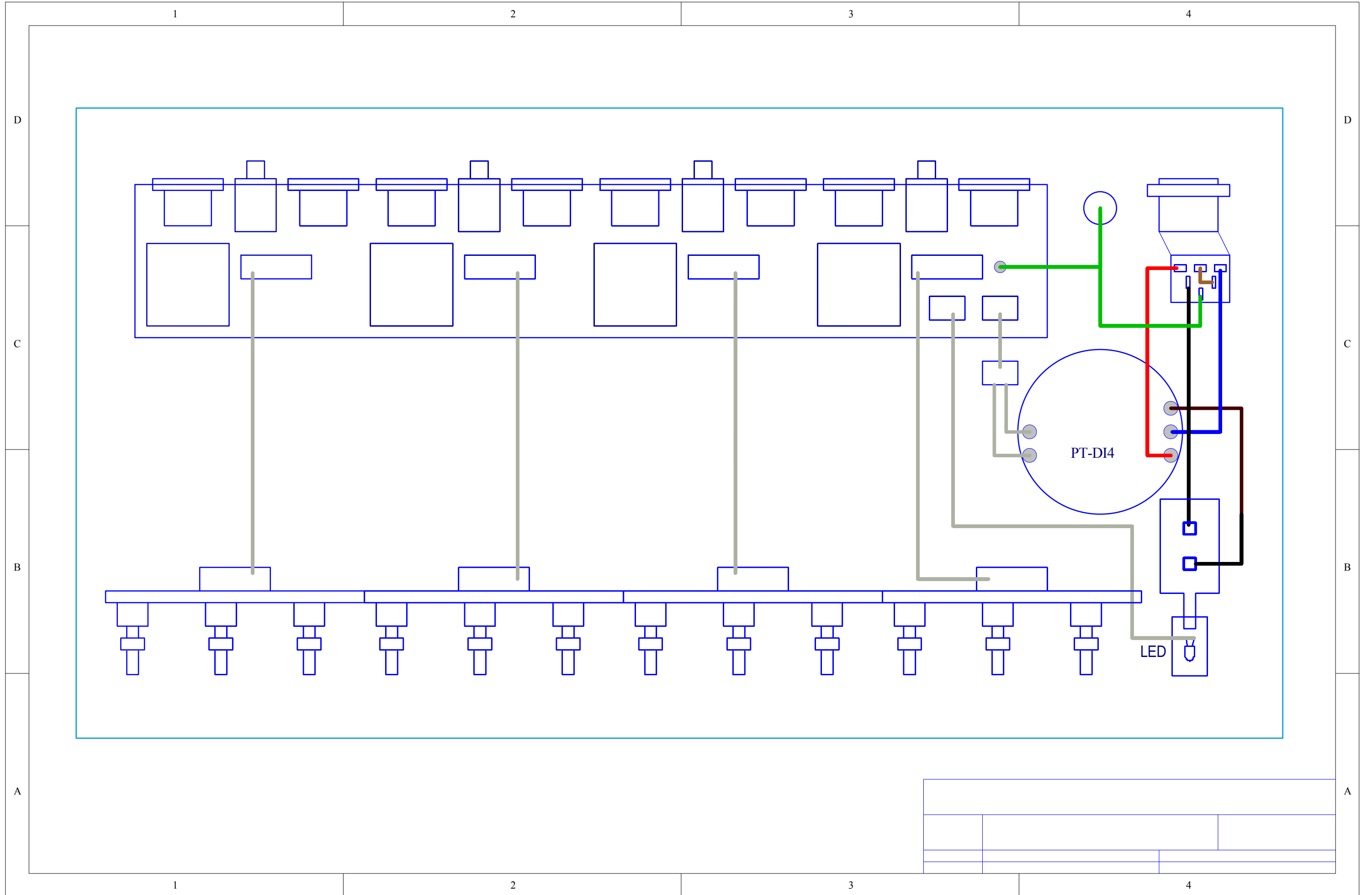
PCB : DI4IN Drill Drawing Plots

Hole Size	Hole Count
24mil (0.6mm)	2
87mil (2.2mm)	10
Totals	12





5. Wiring Diagram



7. Electrical Parts List

DI4-ALTO-230V-

Structure Needing Material Detail List

NO. **Midprod NO** **Quantity** **Unit**

NO	Material No	Item Name	Specific
-----------	--------------------	------------------	-----------------

MARK:

MARK:

MARK:

MARK:

MARK:

MARK:

MARK:

MARK:

MARK:

MARK:

MARK:

MARK:

MARK:

MARK:

MARK:

MARK:

MARK:

MARK:

MARK:

MARK:

MARK:

MARK:

MARK:

MARK:

MARK:

NO	Material No	Item Name	Specific
-----------	--------------------	------------------	-----------------

MARK:

MARK:

MARK:

MARK:

MARK:

MARK:

MARK:

MARK:

MARK:

MARK:

MARK:

MARK:

MARK:

MARK:

MARK:

MARK:

MARK:

MARK:

MARK:

MARK:

MARK:

MARK:

MARK:

MARK:

MARK:

NO ***Material No*** ***Item Name*** ***Specific***

MARK:

NO ***Material No*** ***Item Name*** ***Specific***

MARK:

MARK:

<i>NO</i>	<i>Material No</i>	<i>Item Name</i>	<i>Specific</i>
------------------	---------------------------	-------------------------	------------------------

MARK:

MARK:

MARK:

MARK:

NO	Material No	Item Name	Specific
-----------	--------------------	------------------	-----------------

MARK:

MARK:

MARK:

MARK:

MARK:

MARK:

MARK:

MARK:

MARK:

MARK:

MARK:

MARK:

MARK:

MARK:

MARK:

MARK:

MARK:

MARK:

MARK:

MARK:

MARK:

MARK:

MARK:

NO ***Material No*** ***Item Name*** ***Specific***

MARK:

MARK:

<i>NO</i>	<i>Material No</i>	<i>Item Name</i>	<i>Specific</i>
------------------	---------------------------	-------------------------	------------------------

MARK:

MARK:

MARK:

MARK:

MARK:

MARK:

MARK:

MARK:

MARK:

MARK:

MARK:

MARK:

MARK:

MARK:

MARK:

MARK:

<i>NO</i>	<i>Material No</i>	<i>Item Name</i>	<i>Specific</i>
------------------	---------------------------	-------------------------	------------------------

MARK:

MARK:

MARK:

MARK:

MARK:

MARK:

MARK:

<i>NO</i>	<i>Material No</i>	<i>Item Name</i>	<i>Specific</i>
------------------	---------------------------	-------------------------	------------------------

MARK:

MARK:

MARK:

MARK:

MARK:

MARK:

MARK:

MARK:

MARK:

MARK:

MARK:

MARK:

MARK:

MARK:

MARK:

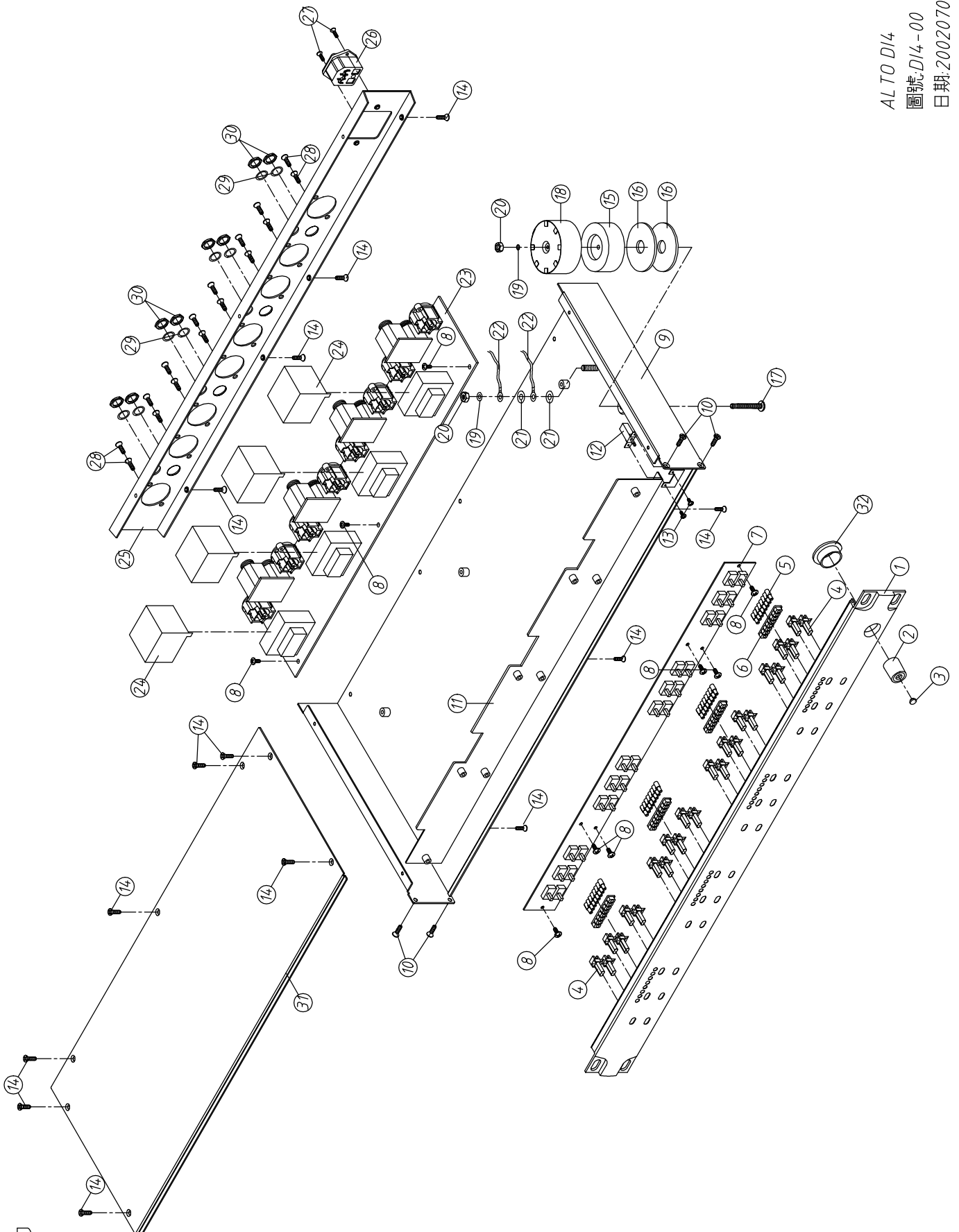
NO ***Material No*** ***Item Name*** ***Specific***

MARK:

MARK:

8. Exploded Views

ALTO D14
圖號: D14-00
日期: 20020701



SEKAKU