

Service *Manual*

MODEL: DIGAN2.7

CONTENT

1. Introduction.....	1
2. Specification.....	2
3. Block Diagram.....	3
4. Schematic Diagram.....	4
5. Wiring Diagram.....	9
6. PCB Layout.....	10
7. Test Procedure.....	17
8. Exploded View & Mechanical Parts List.....	20
9. BOM.....	22

1. Introduction

1. Digital control and DSP technology with graphic display 7 bands Graphic or Parametric equalization.
2. Dynamic range processing with Ratio, Threshold, Attack and Release time control.
3. Tone adjustment with Bass and Treble control.
4. 100 presets: 30 factory presets and 70 user-programmable presets.
5. 32x24 bit DSP processing with 48KHz sampling rate.
6. Stereo channels processing with or without link control.
7. +/- 12 dB boost/cut for every bands adjustment.
8. Master volume control.
9. EQ Bypass function support.
10. USB control interface for easy operating with PC editor.
11. 2 unbalanced 1/4" TRS jacks.

2. Technical Specification

System Parametric	Band	2×7 bands, 4/3octave
	Bandwidth	20Hz-20kHz
	THD+N%	0.015%, Analog In to Analog Out
	Signal to noise ratio	90dB A-Weighted, Analog In to Analog Out
	Input gain	+/-12dB
	Output gain	+/-6dB
	Preset	Factory preset: 30, User preset: 70
Input section	Inputs	Two 1/4" TRS connectors
	Input impedance	Balanced 50Kohm, Unbalanced 25Kohm
	Input level	Maximum Input Level: +16dBu
Output section	Outputs	Two 1/4"TRS connectors
	Output impedance	Balanced 120ohm, Unbalanced 60ohm
	Output level	Maximum Output Level: +16dBu
USB serial port		USB1.1
Power supply (AC/AC adapter)	Input voltage	9 Volt AC Power Transformer
	Power consumption	6W
Physical	Dimension(W×D×H)	261×150×44mm
	Net weight	2.67lbs(1.21kg)

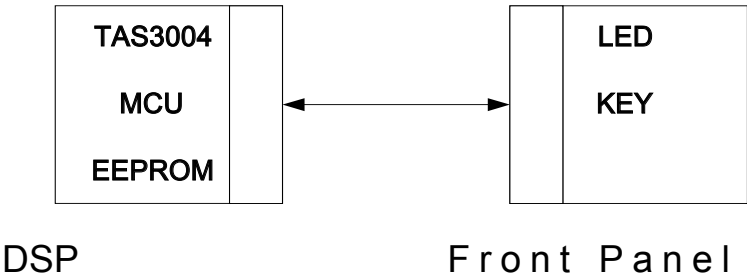
3. Block Diagram

Hardware:

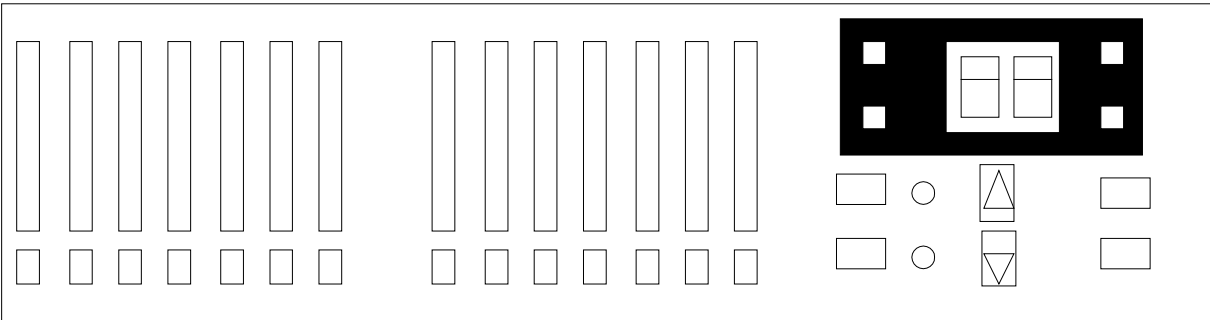
(1)Front panel : LED , UP/DOWN , LINK/EXIT,BYPASS

(2)DSP board : TAS3004+MCU(motorola)+EEPROM

Wiring Block Diagram :

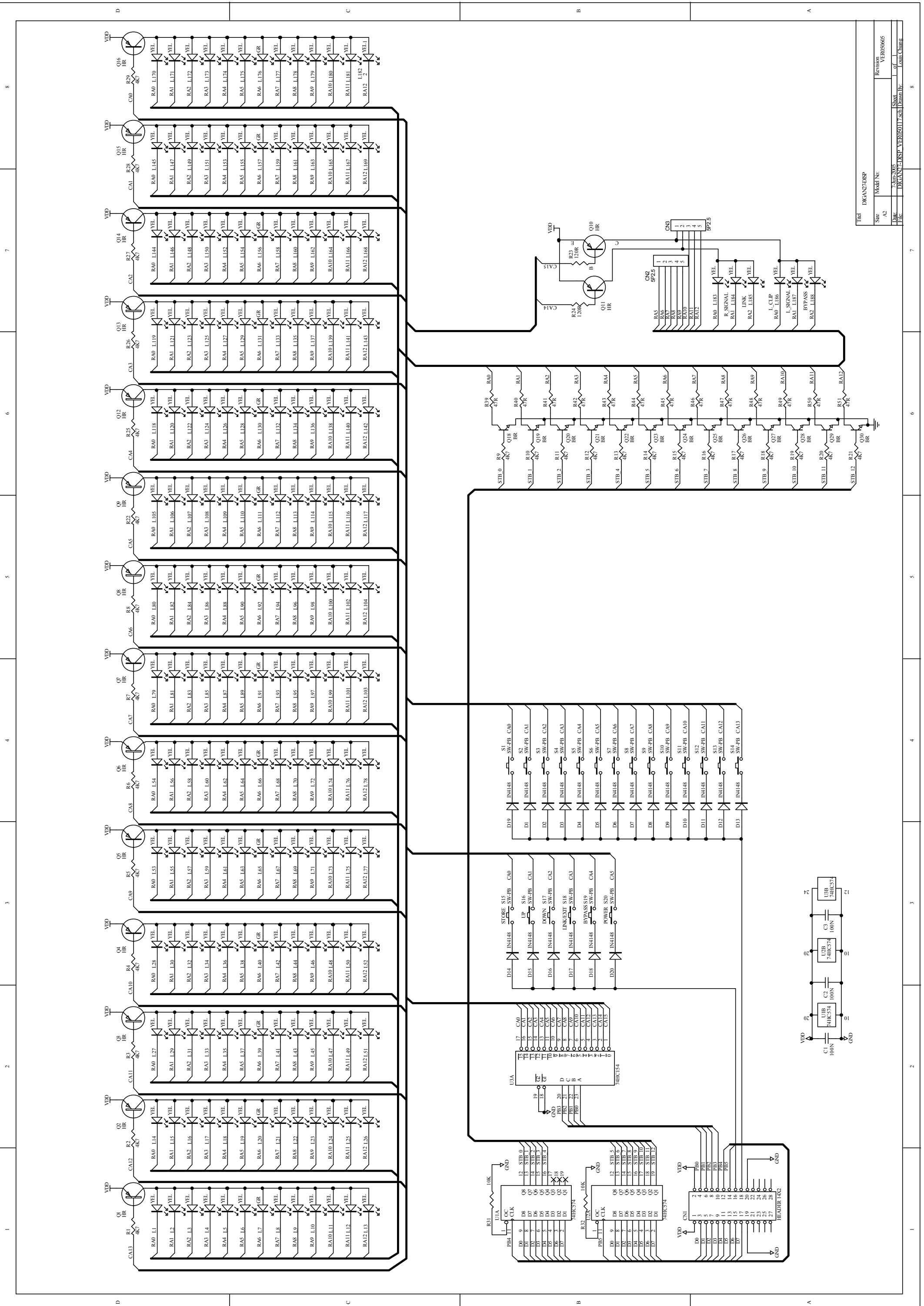


DIGAN 2.7 Surface Diagram:

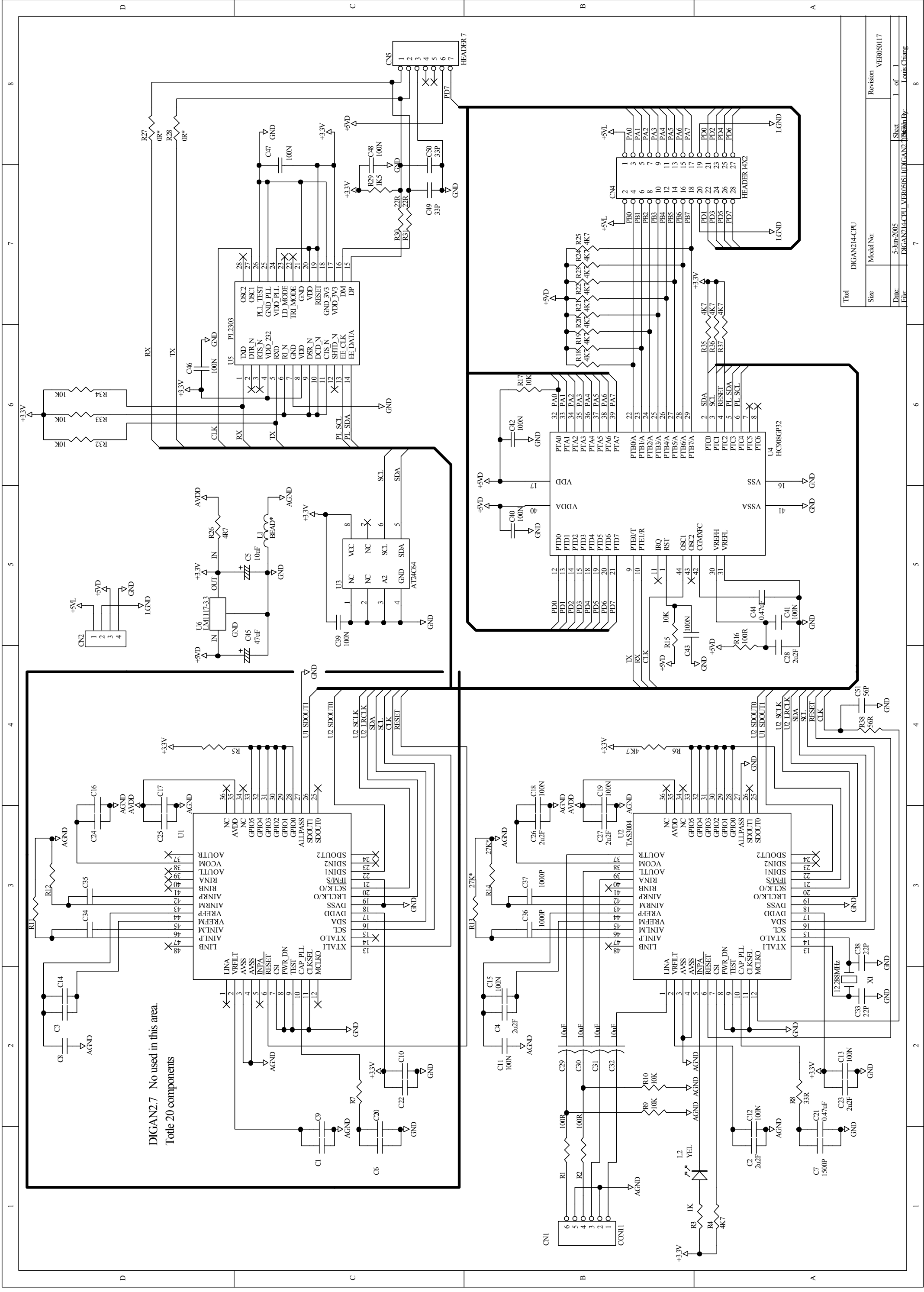


(The LED panel can display the Gain value of each BAND and the setting)

4. Schematic Diagram

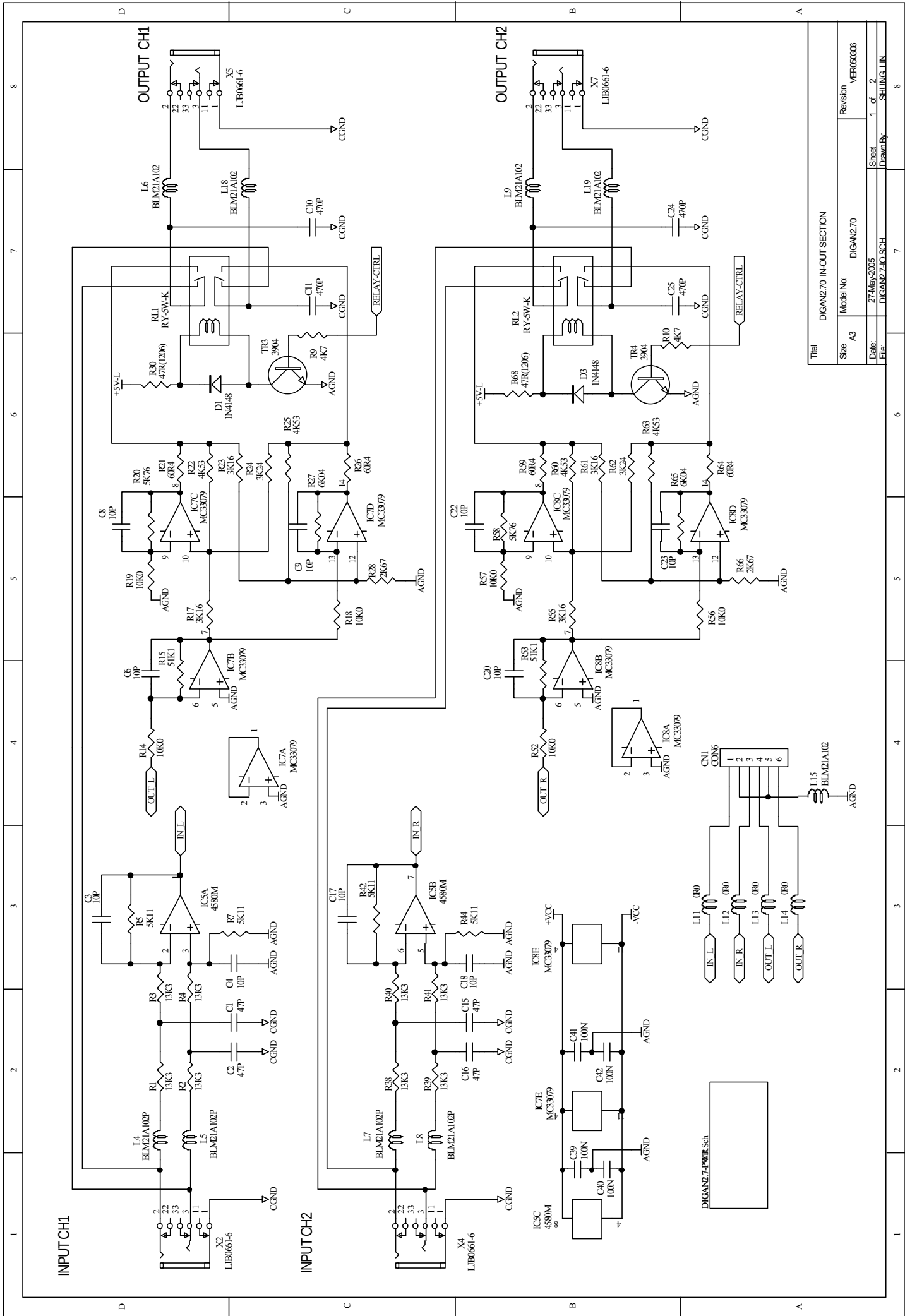


Title	DKCAN27D8P
Rev	VER050605
Mod No	
Doc No	7-46-305
Doc Rev	1
Doc Date	2005/07/28
Doc By	Li Jian-Chang



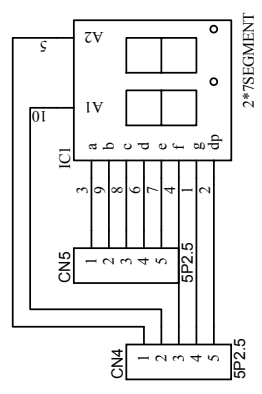
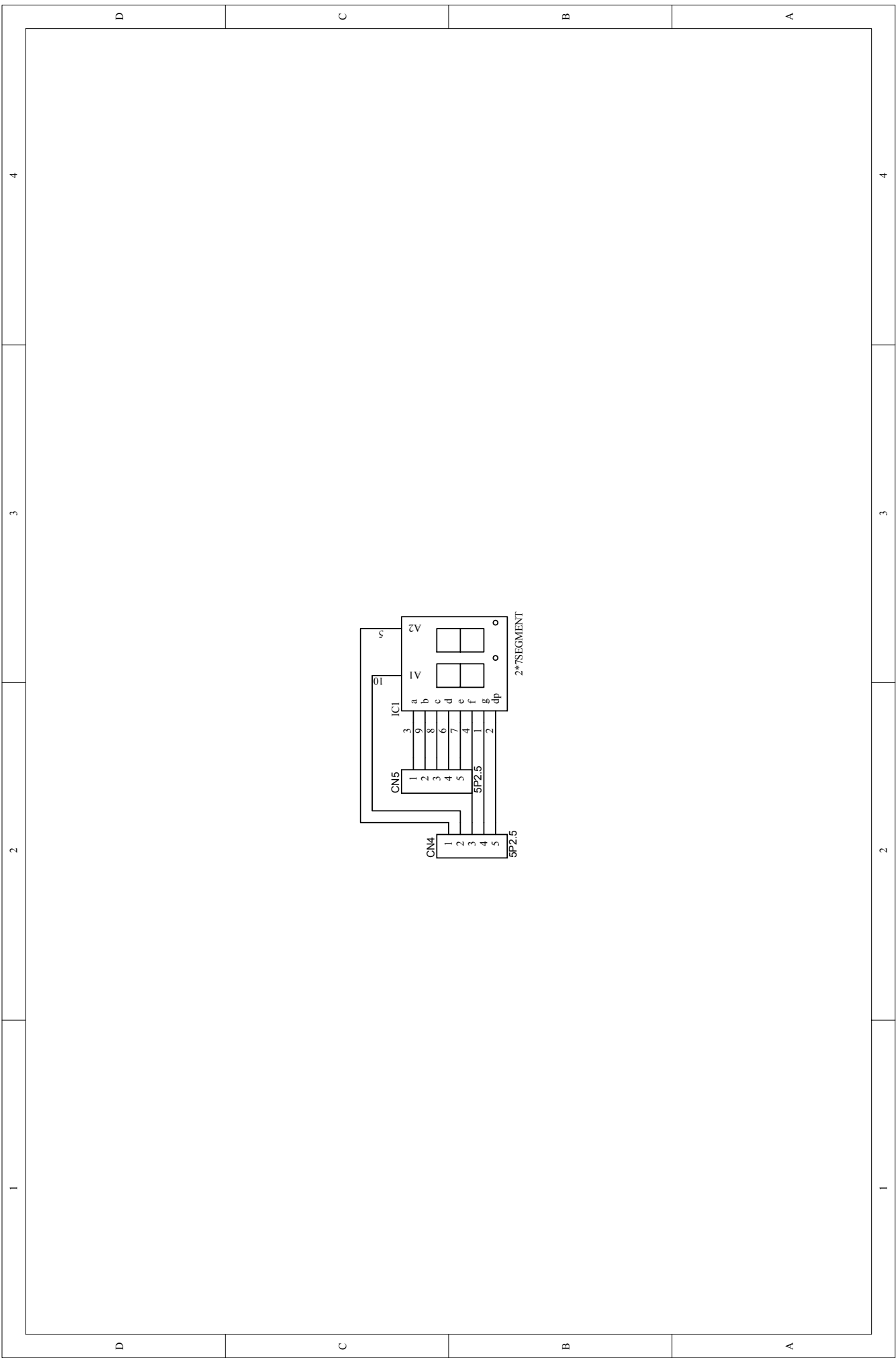
DIGAN2.7 No used in this area.
Totle 20 components

Titel	DIGAN214-CPU
Size	Model Nbr
Date:	5-Jun-2005
File:	DIGAN214CPU1_VER050511.DIGAN2
Sheet	1 of 8
Revision	VER050117

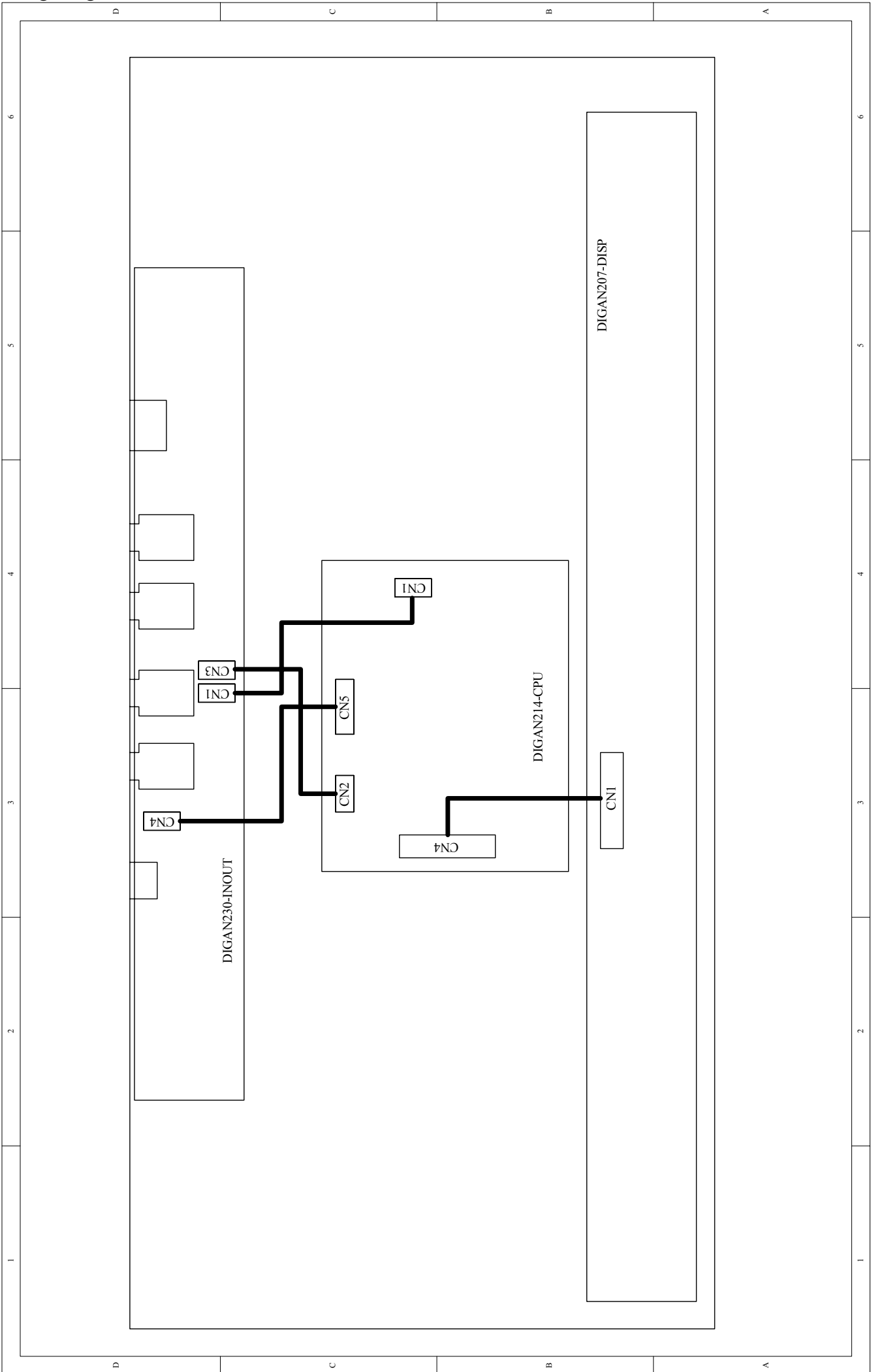


Sheet	1	of	2
Drawn By	SHUNG LIN		
File	DIGAN2.70.D.SCH		
Date	27/May/2005		
Size	A3	Model No	DIGAN2.70
Revision	VER060806		

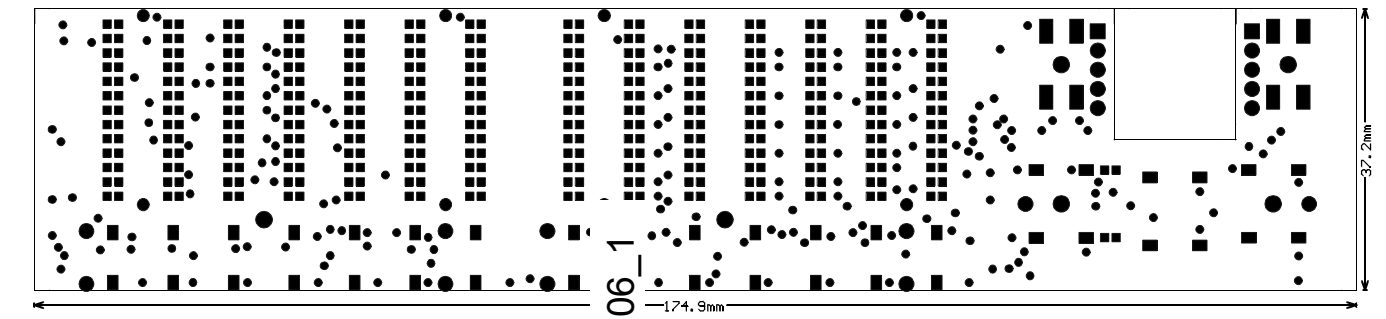
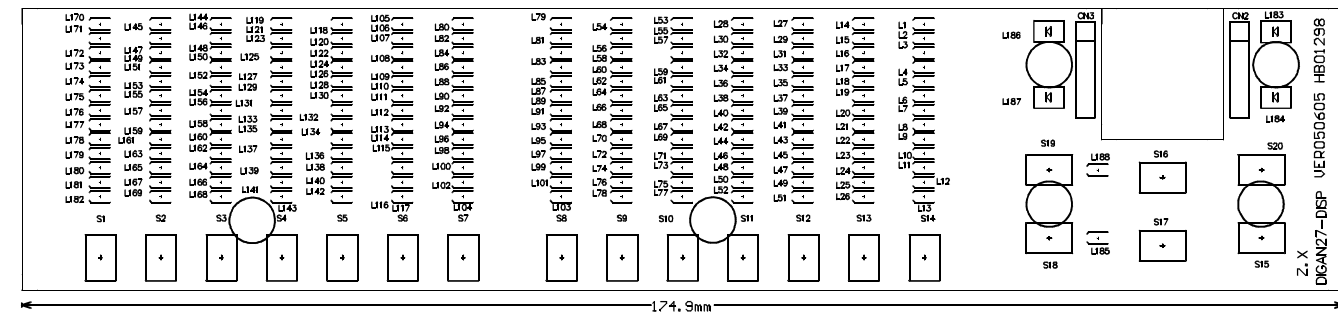
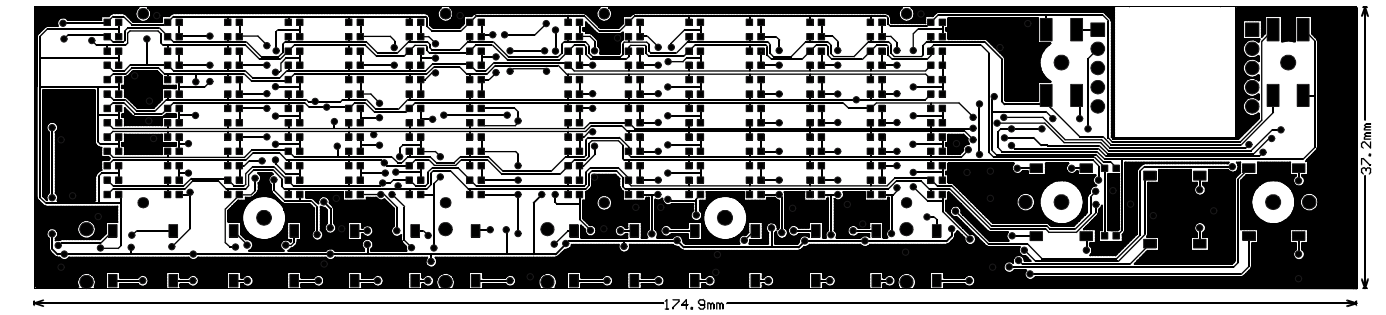
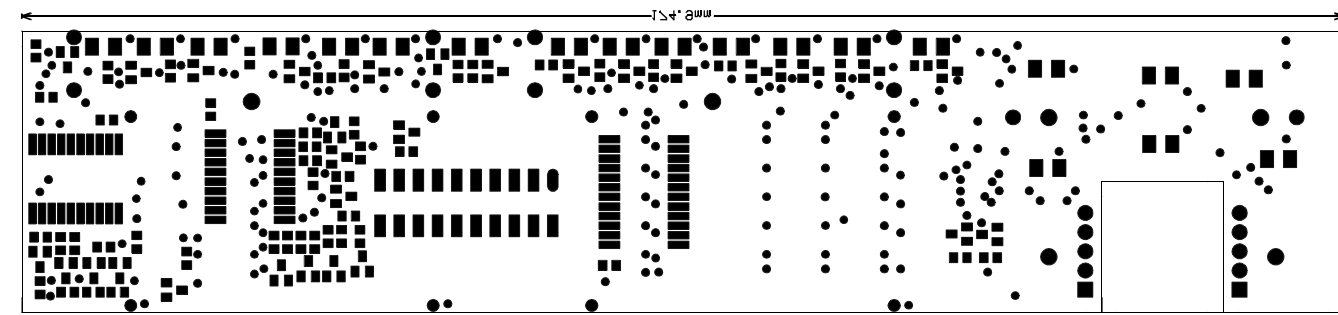
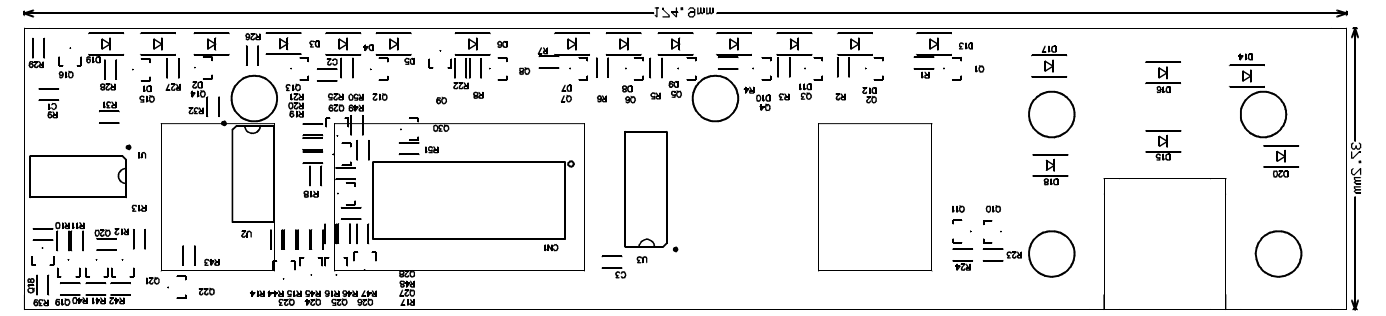
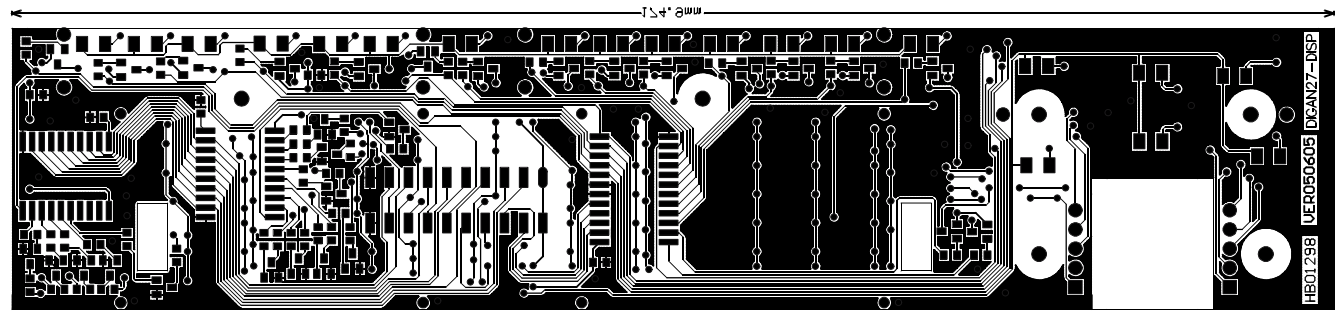
Title	DIGAN2.70 IN-OUT SECTION		
Model No	DIGAN2.70		
Revision	VER060806		
Sheet	1	of	2
Drawn By	SHUNG LIN		
Date	27/May/2005		
File	DIGAN2.70.D.SCH		

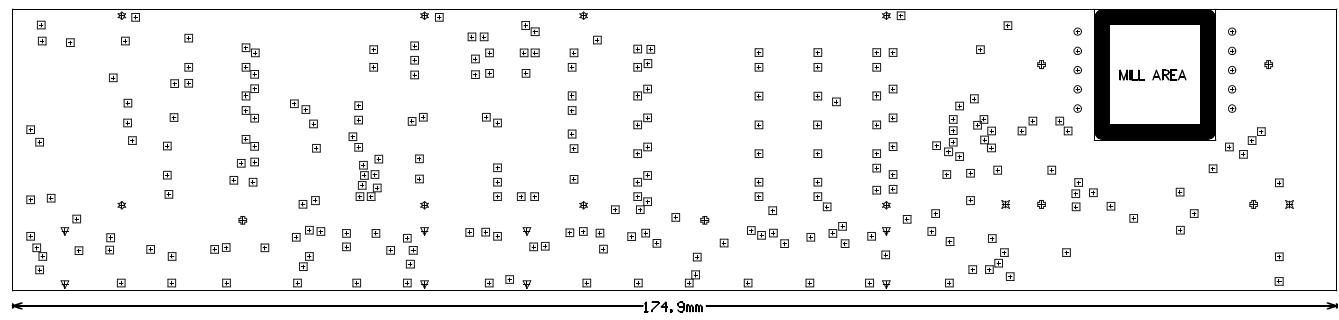


5. Wiring Diagram



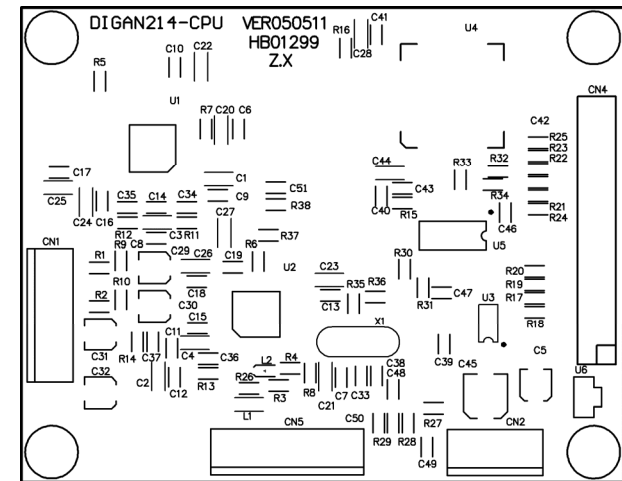
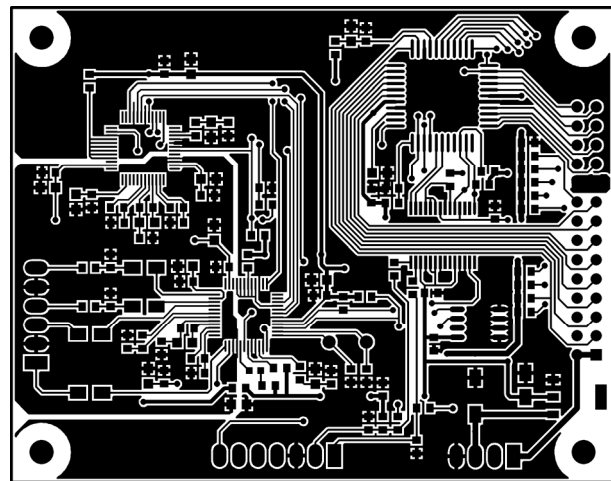
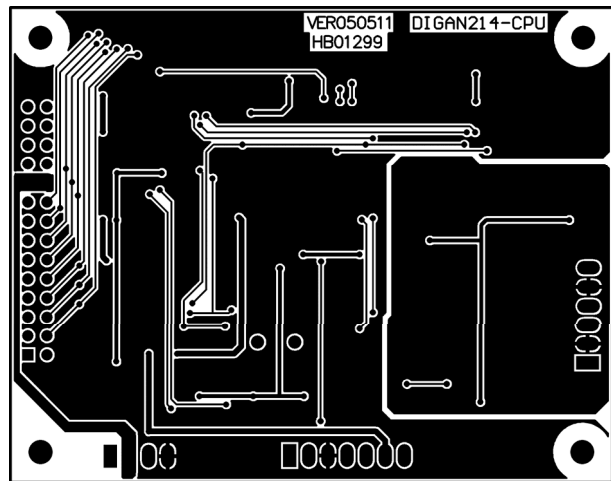
6. PCB Layout





□	254	20mil	0.508mm	PTH
○	10	39.37mil	1mm	PTH
★	8	56mil	1.4224mm	NPTH
▽	8	71mil	1.8034mm	NPTH
×	2	71mil	1.8034mm	PTH
○	6	79mil	2.0066mm	NPTH
	288	Total		

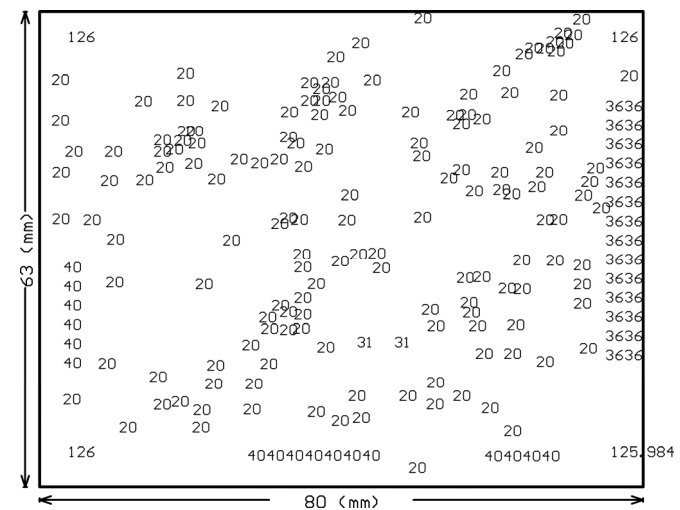
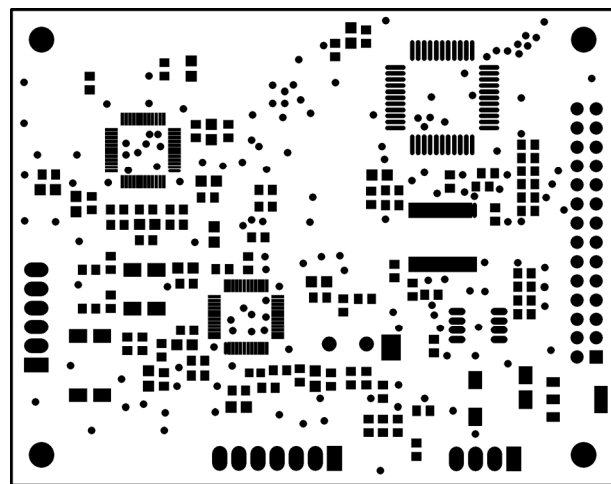
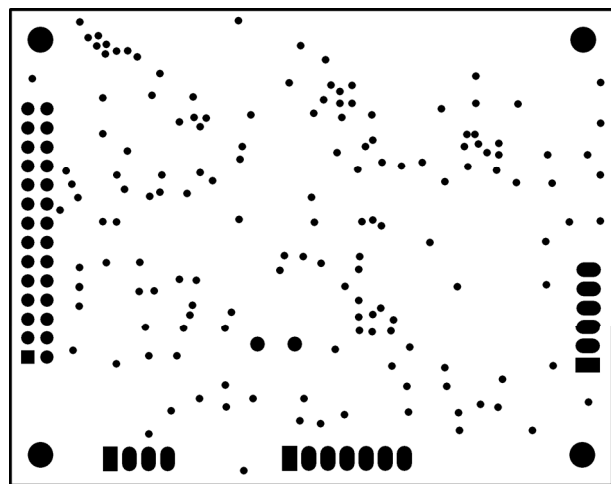
DRILL DRAWING



PCB : DIGAN214CPU Bottom Layer

PCB : DIGAN214CPU Top Layer

PCB : DIGAN214CPU Top Overlay



PCB : DIGAN214CPU Bottom Solder Mask

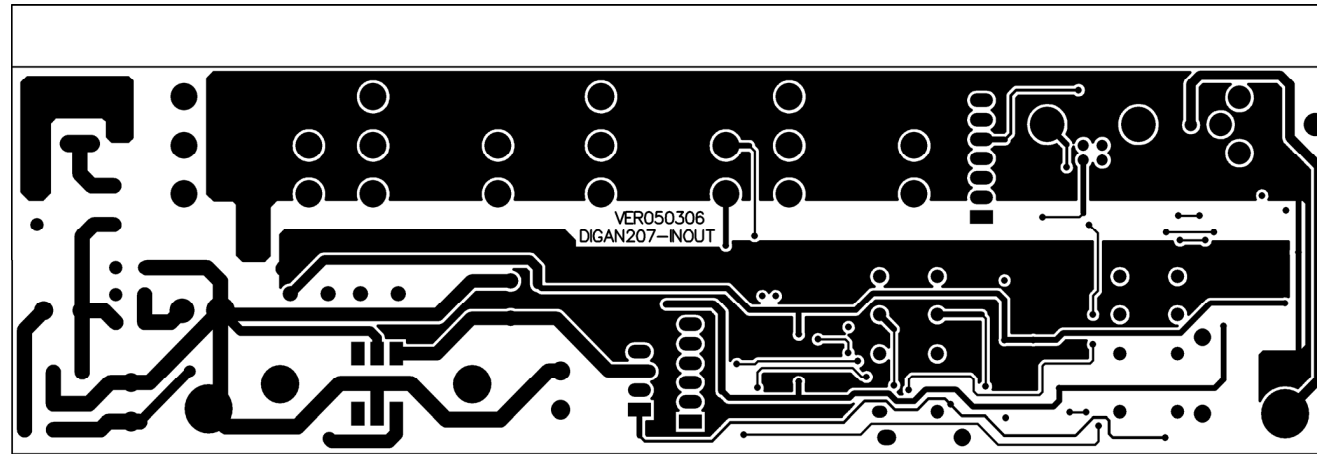
PCB : DIGAN214CPU Top Solder Mask

PCB : DIGAN214CPU Drill Drawing

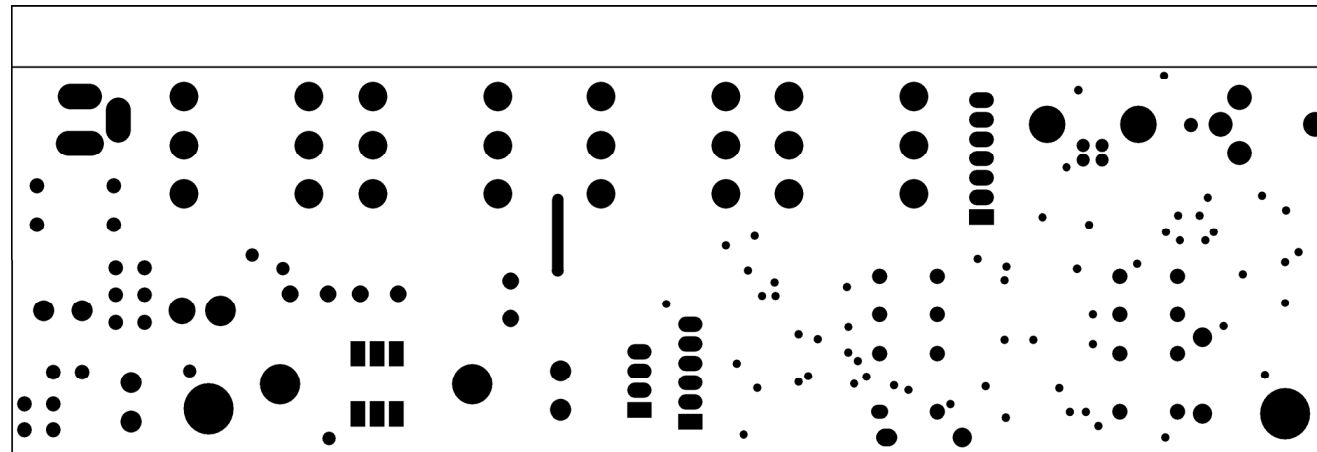


Tool	Hole Size	Hole Count Plated	Tool Travel
T1	20mil (0.508mm)	150	97.21 Inch (2469.09 mm)
T2	31mil (0.7874mm)	2	66.58 Inch (1691.22 mm)
T3	36mil (0.9144mm)	28	70.50 Inch (1790.76 mm)
T4	40mil (1.016mm)	17	70.05 Inch (1779.18 mm)
T5	126mil (3.2004mm)	4	74.69 Inch (1897.00 mm)

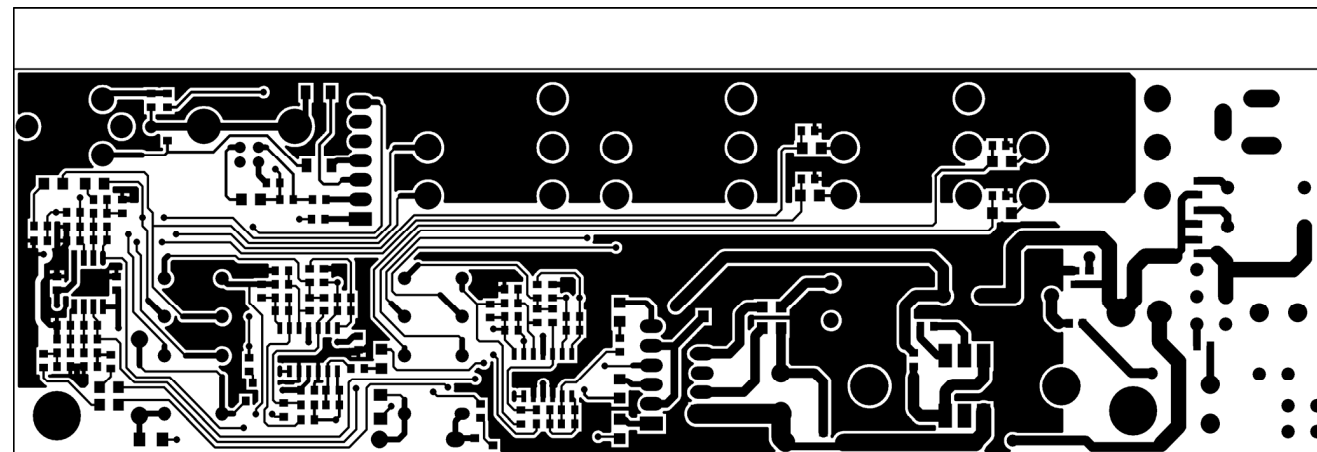
Totals		201	379.03 Inch (9627.27 mm)



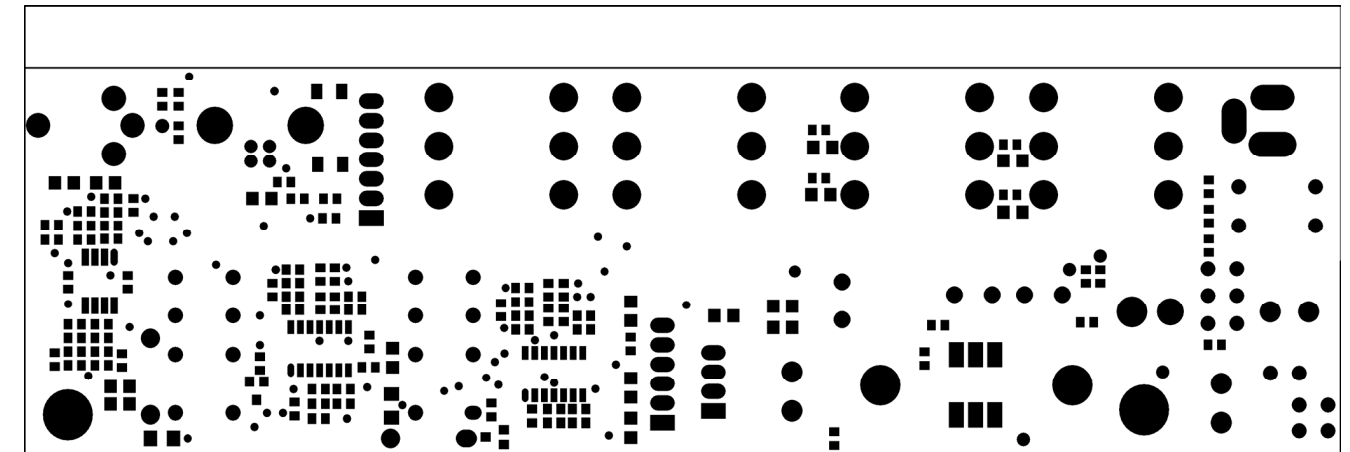
PCB : DIGAN207-INOUT Bottom Layer



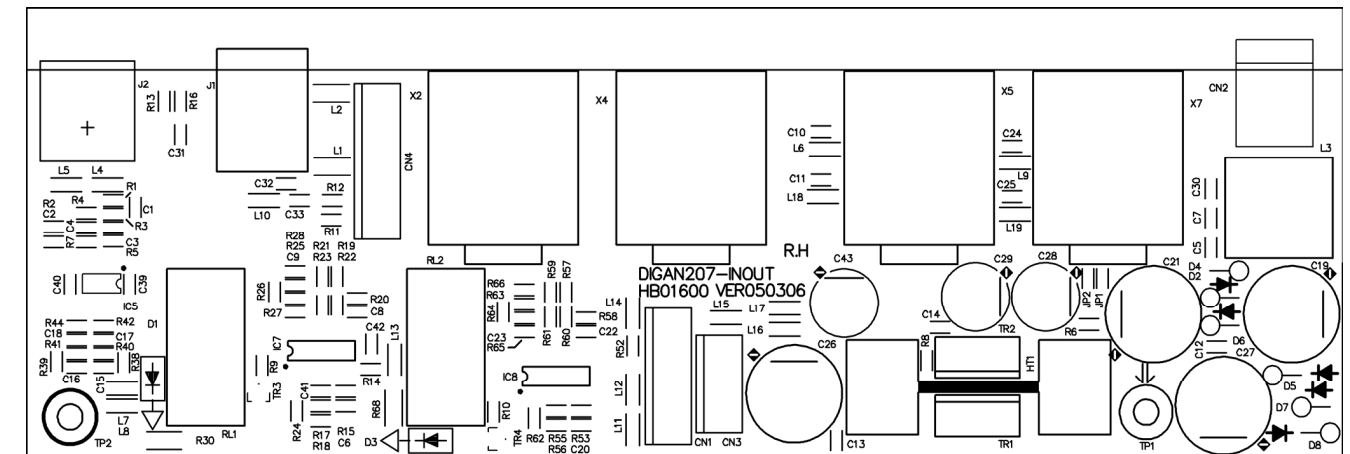
PCB : DIGAN207-INOUT Bottom Solder Mask



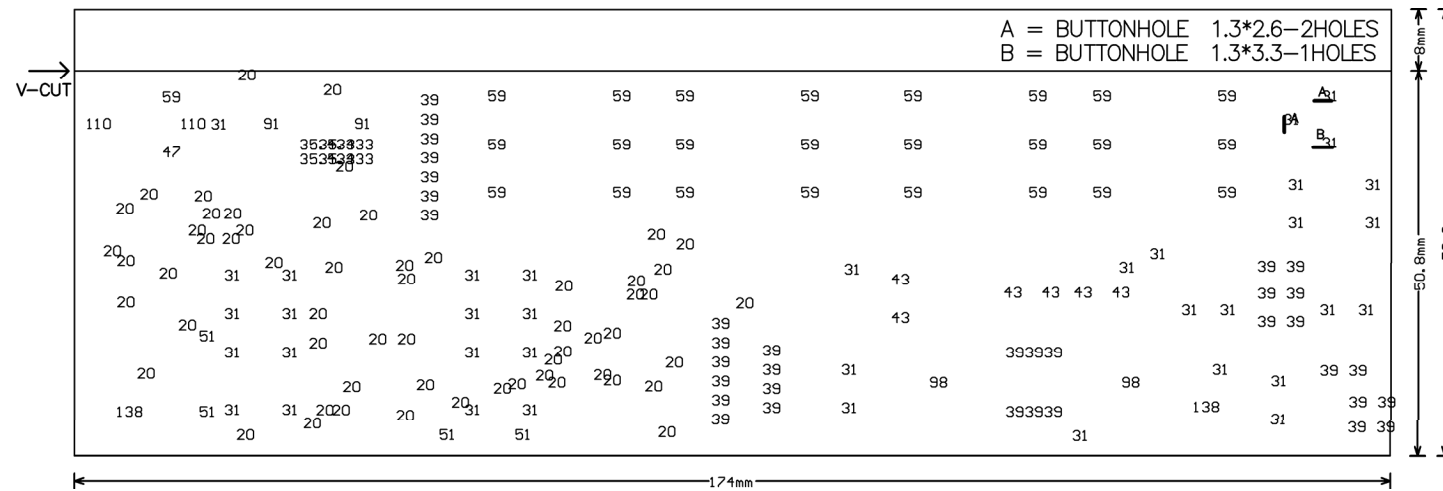
PCB : DIGAN207-INOUT Top Layer



PCB : DIGAN207-INOUT Top Solder Mask

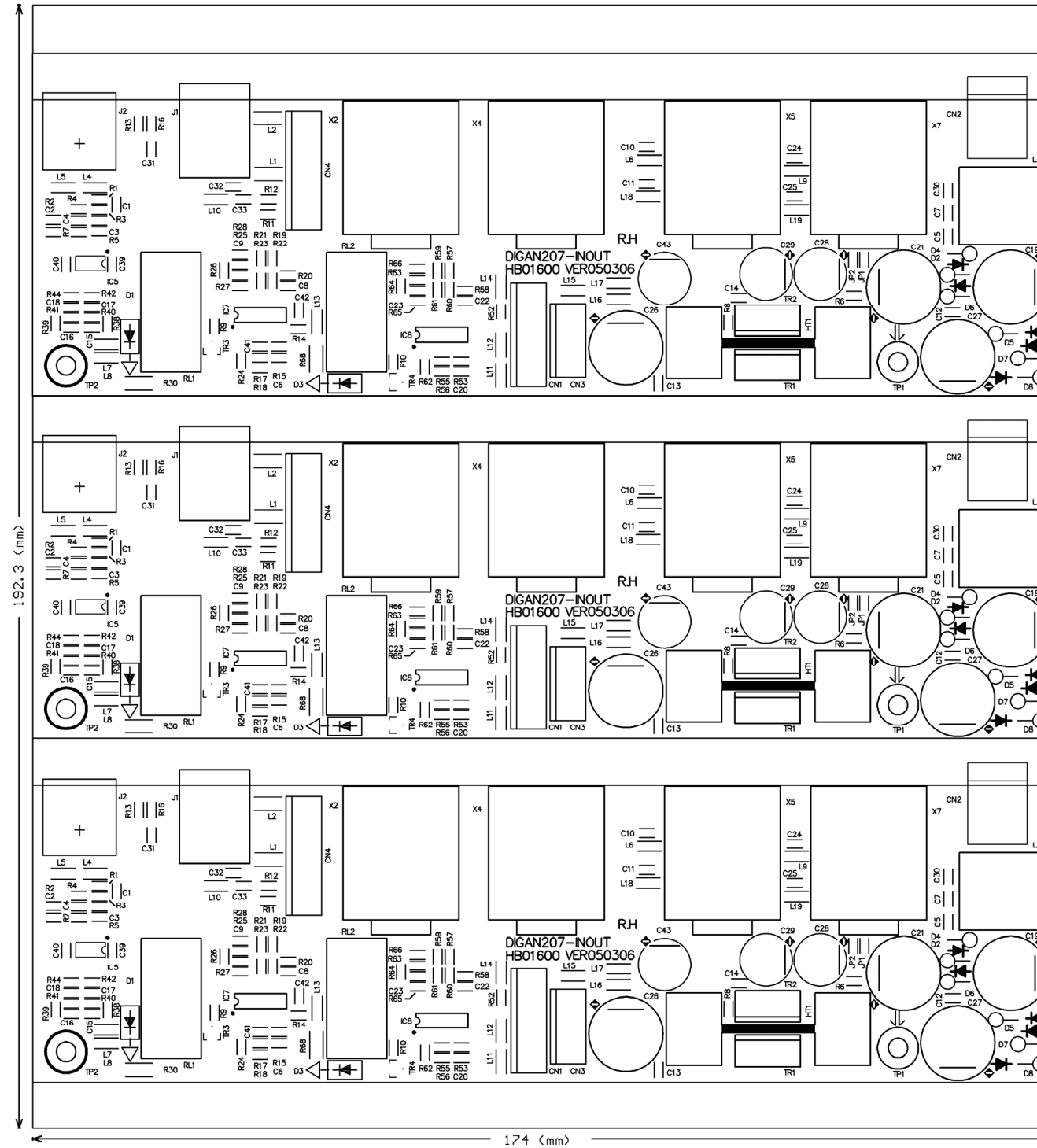


PCB : DIGAN207-INOUT Top Overlay



PCB : DIGAN207-INOUT Drill Drawing

Tool	Hole Size	Hole Count Plated	Tool Travel
T1	20mil (0.508mm)	59	22.25 Inch (565.15 mm)
T2	31mil (0.7874mm)	37	30.47 Inch (773.85 mm)
T3	35mil (0.889mm)	4	6.55 Inch (166.26 mm)
T4	39mil (0.9906mm)	35	19.73 Inch (501.10 mm)
T5	43mil (1.0922mm)	6	11.21 Inch (284.74 mm)
T6	47mil (1.1938mm)	1	5.73 Inch (145.61 mm)
T7	51mil (1.2954mm)	4	8.72 Inch (221.55 mm)
T8	59mil (1.4986mm)	25	15.41 Inch (391.29 mm)
T9	91mil (2.3114mm)	2	6.72 Inch (170.58 mm)
T10	98mil (2.4892mm)	2	10.79 Inch (274.11 mm)
T11	138mil (3.5052mm)	2	15.73 Inch (399.46 mm)
T12	110mil (2.794mm)	2	NPTH 6.02 Inch (152.84 mm)
Totals		179	159.31 Inch (4046.55 mm)



PCB : DIGAN207-INOUT

7. TEST PROCEDURE

Test Instruments

1. AP instrument
2. Dual track oscillograph
3. Computer (WINDOWS 2000)

Instrument Setting and Connection

1. Connect AP output to INPUT1 and INPUT2. Set AP 1 kHz, 0dBu, Load 600Ω, UNBAL & BAL.
2. Connect OUTPUT1 and OUTPUT 2 to AP input terminal. Connect its monitor signal to oscillograph. Set UNBAL& BAL Load 100KΩ, BW: 22Hz~22 kHz.

Part 1 Functional Switch Test

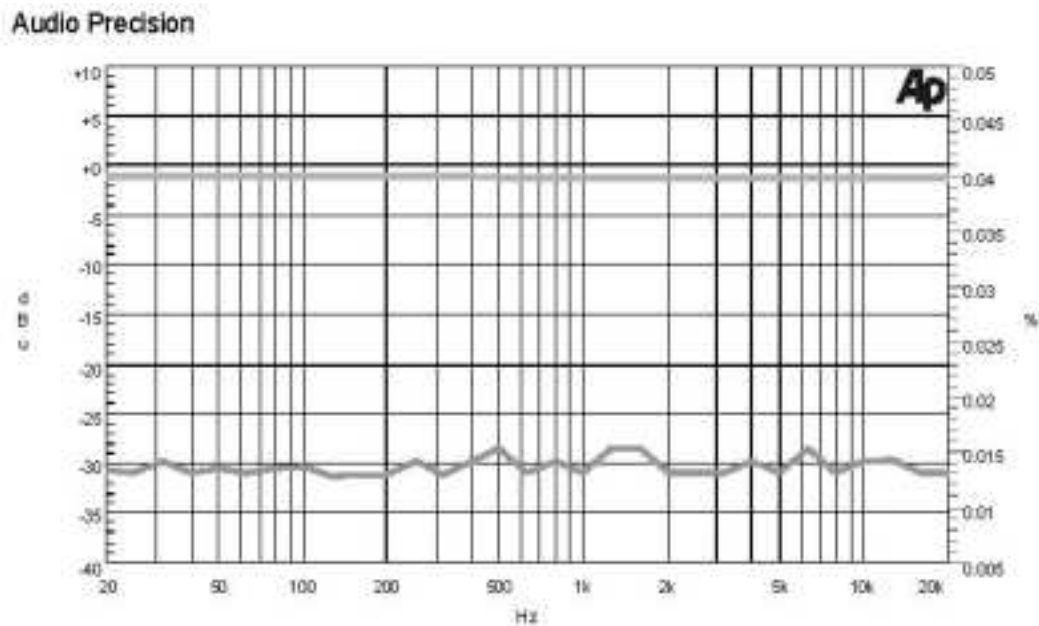
1. Connect AC9V/300mA voltage adapter to DIGAN2.7. When the power switch is in the ON position, LED indicates "D27". Press POWER button, now it is in the standby mode. It is 0dBu input and 0dBu output of the AP instrument.
2. Press the button of POWER, BYPASS and LINK in turn quickly. The left LED shows "TST". After flashing about 2 seconds, the seven bands LCD shows "00".
 - 2-1. Press the " " button, the yellow LED of PEQ and GEQ on the right will light up.
 - 2-2. Press the " " button, the yellow LED of "DRCE" and "TONE" on the right will light up.
 - 2-3. Press the "STORE" button, "TONE" and "GEQ" will light up simultaneously.
 - 2-4. Press the "BYPASS" button, and the yellow LED beside will light up.
 - 2-5. Press the "LINK" button, and the yellow LED beside will light up.
 - 2-6. Press the "50" button of the left channel, EQ LED will light up from left to right in turn. (The one in the middle is green, others are yellow.)
 - 2-7. Press "125" button of the left channel, the LED of L/R channel EQ will light up in turn.
 - 2-8. Press "260" button of the left channel, the corresponding EQ LED will light up.
 - 2-9. Press the buttons of other frequency, the corresponding EQ LED will light up.

Part 2 Electric Performance Test

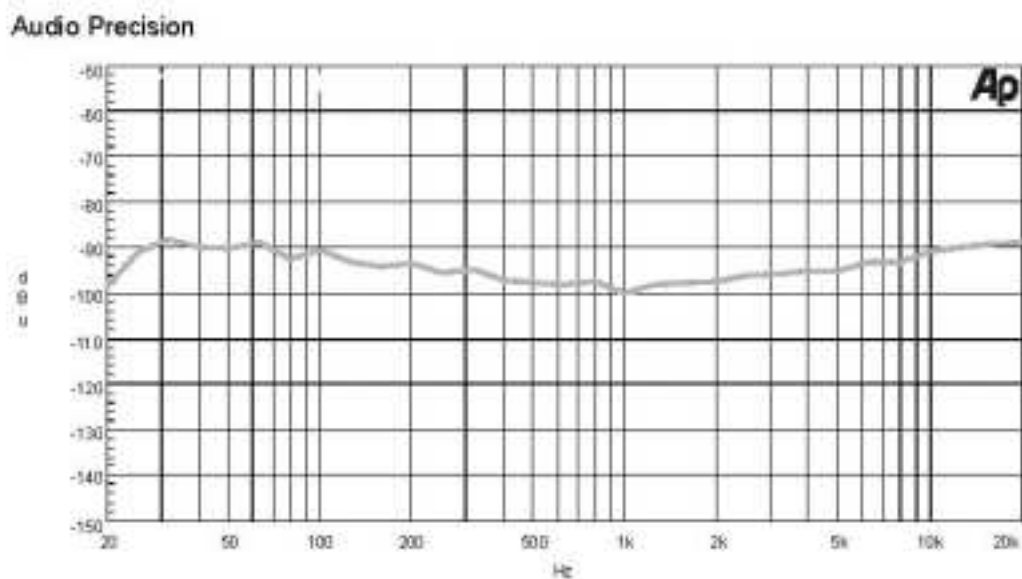
1. Set the AP instrument 0dBu output, BW: 22Hz ~22kHz (Input Signal Level=0dBu, at model 00).

Test the unbalanced input/output of L/R channel of DIGAN 2.7 is 0dBu±1dBu. THD+N value 0.03%.

The diagram of Frequency Response is as Figure 1.



2. Test the Output noise of L/R channel of DIGAN2.7, the value -85dBu. The diagram of Output noise is as Figure 2.



3. Test the S/N value of L/R channel in DIGAN2.70. It is 96dBu.

Part 3 Test if it can be connected to the computer.

1. Open DIGAN control program in the computer (as figure 1), then click the new icon (as the arrow indicating).
2. Select the corresponding program. If it is the DIGAN2.7, please select the first one (as the arrow indicating in figure 2).
3. After opening the program, click the external instrument connection icon (as the arrow indicating in figure 3).
4. If the connection succeeds, the bottom of the windows shows red (as the arrow indicating in figure 4).

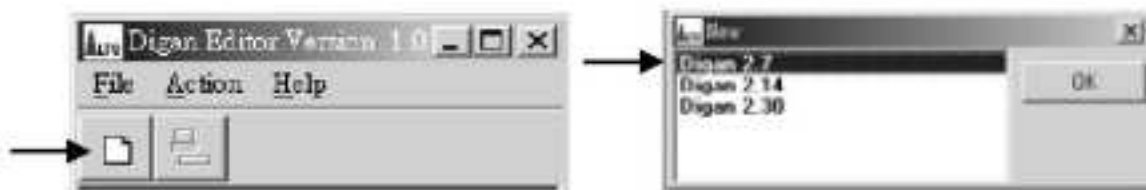


Figure 1

Figure 2



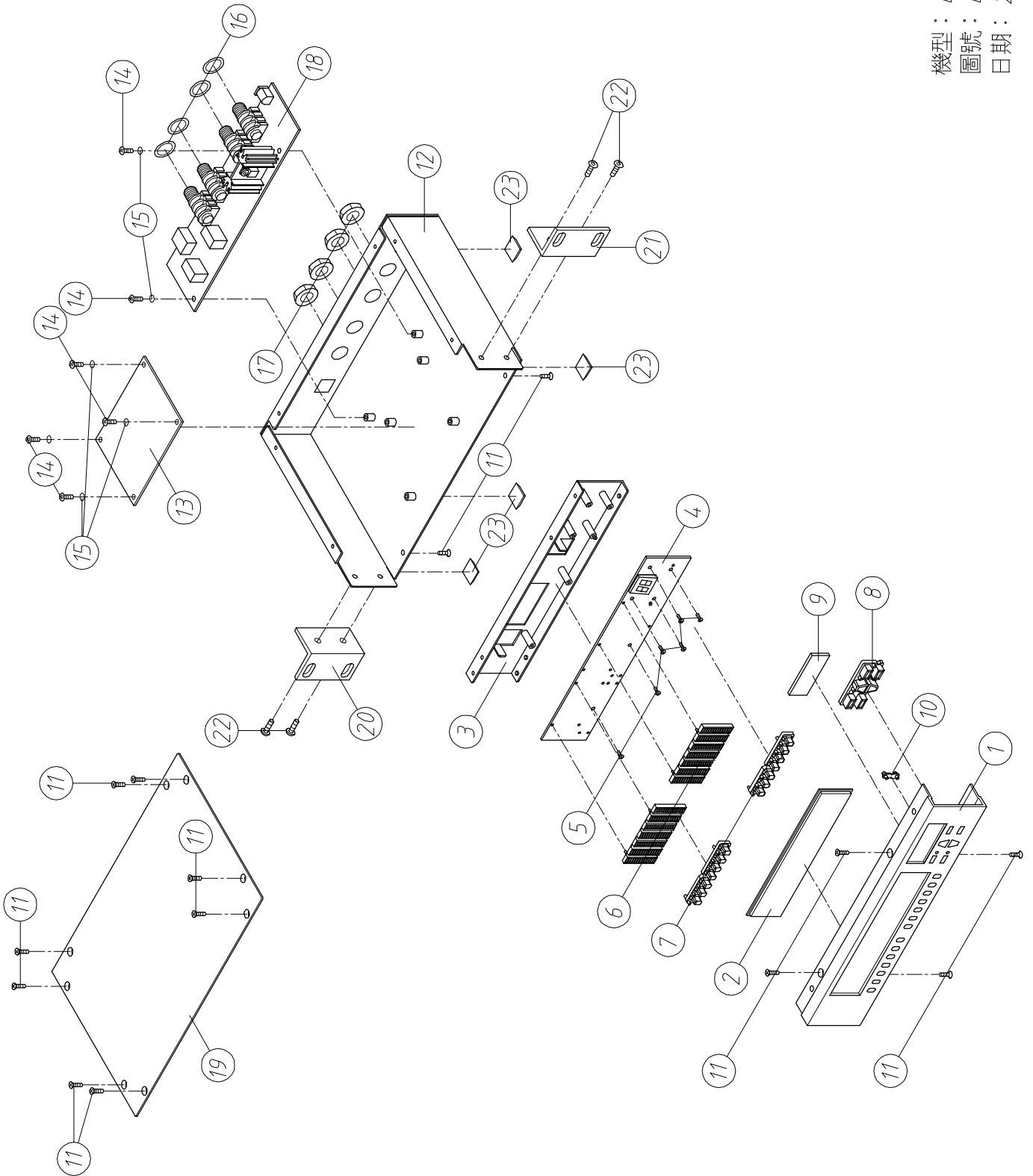
Figure 3

Figure 4

Part 4 Done

8. Exploded Views & Mechanical Parts list

機型 : DIGAN2.7
 圖號 : DIGAN2.7-00
 日期 : 2005/06/07



Parts List

Mechanical Parts List				
No.	Item NO.	Item Description	Specification	pcs
1	MA00211	ZC-F-5063 blue	DIGAN 2.7 10*38*174.9_V1.0	1
2	NI03365	ZC-acrylic plastic panel-transparent	DIGAN2.7 V1.1	1
3	MI02542	ZD-front panel	DIGAN 2.7 10*38*174.9_V1.0	1
4		PCB semi-finished product	P-DIGAN27DISP-DIP	1
5	MG00153	Ni screw-pill	M2*8	6
6	NI02027	Lens-ABS	DIGAN 2.7 3.7*25*54 black_V1.0	2
7	NI03353	Button-rigidity 70	DIGAN 2.7 5.6*3.2*56(hexagon-7)_V1.0	2
8	NI03358	Button-rigidity 70	DIGAN2.30 40*11.5_V1.0	1
9	NI03383	ZC-acrylic plastic panel-transparent	DIGAN2.14 middle_V1.0	1
10	NI03290	Lens pillar	2*4*13*5.4_V1.0	1
11	MG00025	Black-plated screw-flat	M3*6	14
12	MB03744	ZC-chassis	DIGAN2.7_V1.2	1
13	HK05614	PCB semi-finished product	P-DIGAN207-CPU-DIP	1
14	MG00041	Black-plated screw-pill	M3*6	6
15	MF00037	spring washer	3*φ5*1t	6
16	NC00131	T- wooden washer	1*φ11.3*φ15.3 red	4
17	NI00002	T-plastic nut-HC00108(accessory)	outer hexagon 7/16**G20/15*4.8	4
18	HK05626	PCB semi-finished product	P-DIGAN207-INOUT-DIP	1
19	MC00661	ZB- cover	DIGAN 2.7_V1.0	1
20	MI02548	ZC-front panel fixed bracket -5063blue	DIGAN2.30 left L-shape ALTO_V1.0	2
21	MI02549	ZC-front panel fixed bracket -5063blue	DIGAN2.7 right L-shape_V1.0	2
22	MG00021	Black-plated screw-flat	M4*6	4
23	NI00501	self-adhere foot cushion	12.7*9*3t(SF-004)	4

9. BOM

No.	Part No.	Description	Specification	Remark
1	MA00211	panel	DIGAN2.7_V1.0	
2	MA00244	panel	DIGAN 2.7	
3	MA00243	panel	DIGAN 2.7_V1.0	
4	MI02543	panel	2.1*21.5*44*210_V1.0	
5	MB03744	chassis	DIGAN2.7_V1.2	
6	MB03784	chassis	DIGAN 2.7	
7	MB03783	chassis	DIGAN 2.7_V1.0	
8	MJ00059	single light board	1.2*2135*1220 24.54kg	
9	ME00041	iron pillar	hexagon6.35*M3*6	
10	MI02542	front board	DIGAN 2.7 10*38*174.9_V1.0	
11	MJ00061	iron board	1*2135*1220 20.45kg	
12	ME00183	iron pillar	DIGAN 2.30 (5)*M2*0.4PH*13_V1.0	
13	MC00661	top cover	DIGAN 2.7_V1.1	
14	MC00660	top cover	DIGAN 2.7_V1.0	
15	MJ00059	single light board	1.2*2135*1220 24.54kg	
16	NI03354	bole	DIGAN 2.7 3.7*25*54 black_V1.0	
17	NI03358	silicone sleeve	DIGAN2.30 40*11.5_V1.0	
18	NI03365	acrylic panel	DIGAN2.7_V1.2	
19	NI03355	acrylic panel	DIGAN 2.7 2.1*24.6*117.8_V1.0	
20	NI03383	acrylic panel	DIGAN2.14 middle_V1.1	
21	NI03357	acrylic panel	DIGAN 2.30 2.1*14.8*37.8_V1.1	
22	NH00380	cone	DIGAN2.7/DIGAN2.14_V1.0	
23	NI03290	LED lens	2*4*13*5.4_V1.0	
24	MI02548	fixed bracket	DIGAN2.30 left L type ALTO_V1.0	
25	MI03128	fixed bracket	RKB-2 L type	
26	AE00046	solvent	solvent	
27	AE00284	painting-AC#100	5063 blue	
28	MI00597	fixed bracket	RKB-2 L type_V1.0	
29	MI02549	fixed bracket	DIGAN2.7 right Ltype_V1.0	
30	MI03128	fixed bracket	RKB-2 L type	
31	AE00046	solvent	solvent	
32	AE00284	painting-AC#100	5063 blue	
33	MI00597	fixed bracket	RKB-2 L type_V1.0	
34	NI00002	plastic nut	7/16**G20/15*4.8(hexagon)	
35	MG00025	screw	M3*6	
36	MG00041	screw	M3*6	
37	MG00153	screw	M2*8	
38	MF00037	washer	3.2* 5.5*1t	
39	MG00021	screw	M4*6	
40	NI00218	cable tie	ALT-102SB	
41	NF00061	assurance card	ALTO	
42	NE05004	label	ALTO	

No.	Part No.	Description	Specification	Remark
43	NH00334	cone paper	0.040*1m	
44	NE13915	label	DIGAN2.7_V1.0	
45	NI00014	membrane	0.035*1M	
46	NH00012	bond paper	0.04*1M	
47	NB03678	gift carton	DIGAN2.7 ALTO_V1.0	
48	NA00380	silk wadding	DIGAN2.30 right_V1.0	
49	NA00381	silk wadding	DIGAN2.30 left_V1.0	
50	NB03806	carton	DIGAN2.70 ALTO_V1.0	
51	TG00023	adaptor	230V/50Hz_AC9V/300mA_ET-35_CE	
52	HJ00006	desiccant	30g	
53	NI00501	self-adhere foot cushion	12.7*9*3t(SF-004)	
54	NA00137	clip-chain bag	5*7	
55	NA00123	PE bag	0.04t*580*300mm	
56	NA00279	clip-chain bag	0.04t*100*150mm_V1.0	
57	AD00012	twin adhesive	90*120mm_V1.0	
58	HA01959	row-wire connecting wiring	4P-4P 180	
59	HA01553	header wiring AF:W322	7P-7P 120	
60	HA01502	header wiring	6P-6P 120	
61	HA03817	wire	20P-20P 165mm UL2651 28AWG gray red	
62	HK05614	PC board	P-DIGAN207-CPU-DIP	
63	HC00078	connector(male)	4P 2.5mm 180°	CN2
64	SC00319	crystal oscillator	12.288MHZ	X1
65	HC00080	connector(male)	6P 2.5mm 180°	CN1
66	HC00154	connector	2.54 180° 2*10P(gold-plated) 6/11.6mm	CN4
67	HC00081	connector(male)	7P 2.5mm 180°	CN5
68	AC00002	solder wire	63/37%	
69	HK05615	PC board	P-DIGAN207-CPU-SMD	
70	HB01299	PCB	DIGAN214-CPU_VER050511	
71	CI00114	SMD ceramic capacitor 0805	0.47uF/25V	C21,C44
72	CI00065	SMD ceramic capacitor 0603	0.001uF/50V X7R ±10%	C36,C37
73	CI00075	SMD ceramic capacitor 0603	0.1uF/50V Y5V +80,-20%	C11,C12,C13,C15,C18,C19,C39,C40,C41,C42,C43,C46,C47,C48
74	RD00068	SMD fixed resistor 1/10W	100 ±5% 0603	R1,R2,R16
75	RD00101	SMD fixed resistor 1/10W	10K ±5% 0603	R9,R10,R15,R17,R32,R33,R34
76	CJ00005	SMD AL electrolytic capacitor	10uF/16V CASE4	C5,C29,C30,C31,C32
77	CI00129	SMD ceramic capacitor 0603	0.0015uF/50V X7R ±10%	C7
78	RD00083	SMD fixed resistor 1/10W	1.0K ±5% 0603	R3
79	RD00085	SMD fixed resistor 1/10W	1.5K ±5% 0603	R29
80	CI00051	SMD ceramic capacitor 0603	22PF/50V C0G±5%(C1608C0G1H220JT)/TDK	C33,C38
81	RD00063	SMD fixed resistor 1/10W	22 ±5% 0603	R30,R31
82	CI00031	SMD ceramic capacitor 0805	2.2uF/16V Y5V-0805(2012)	C2,C4,C23,C26,C27,C28
83	CI00053	SMD ceramic capacitor 0603	33PF/50V C0G±5%(C1608C0G1H330JT)/TDK	C49,C50
84	RD00304	SMD fixed resistor 1/10W	33 ±5% 0603	R8

No.	Part No.	Description	Specification	Remark
85	CJ00008	SMD AL electrolytic capacitor	47uF/16V CASE6.3	C45
86	RD00093	SMD fixed resistor 1/10W	4.7K ±5% 0603	R4,R6,R18,R19,R20,R21,R22,R23,R24,R25, R35,R36,R37
87	RD00355	SMD fixed resistor 1/10W	4.7 ±5% 0603	R26
88	CI00056	SMD ceramic capacitor 0603	56PF/50V NPO ±5%	C51
89	RD00346	SMD fixed resistor 1/10W	56 ±5% 0603	R38
90	SG00025	SMD integrated circuit	24LC64I/SN	U3
91	SG00229	SMD integrated circuit	MC68HC908GP32CFB(QFP-44)/(MOT)	U4
92	SF00009	voltage stabilized transistor	LM1117MP-3.3 (3.3V, SOT223)	U6
93	SG00327	SMD integrated circuit	PL-2303HX(SSOP28)/Prolific	U5
94	SG00365	integrated circuit	TAS3004PFBR(PFB48)/(TI)	U2
95	SE00054	SMD L.E.D	yellow 19-21UYC/S530-A2/TR8	L2
96	AE00221	tin soldering paste	SJ-617	
97	HK05651	PC board	P-DIGNA207-DISP-DIP	
98	HC00435	connector	2.54 180° 5P 6/11.6mm	CN2,CN3
99	HB01469	PCB	DIGAN230-7SEG(1*25)_VER050118	
100	HH00051	seven display	LDD3265-10	
101	AC00002	solder wire	63/37%	
102	HK05652	PC board	P-DIGNA207-DISP-SMD	
103	HB01298	PCB	DIGAN27-DISP_VER050605	
104	RD00069	SMD fixed resistor 1/10W	120 ±5% 0603	R23,R24
105	RD00101	SMD fixed resistor 1/10W	10K ±5% 0603	R31,R32
106	RD00065	SMD fixed resistor 1/10W	47 ±5% 0603	R39,R40,R41,R42,R43,R44,R45,R46,R47, R48,R49,R50,R51
107	RD00093	SMD fixed resistor 1/10W	4.7K ±5% 0603	R1,R2,R3,R4,R5,R6,R7,R8,R9,R10,R11,R12 ,R13,R14,R15,R16,R17,R18,R19,R20,R21, R22,R25,R26,R27,R28,R29
108	SG00308	SMD integrated circuit	74HC154DT(PHI)	U3
109	SG00078	SMD integrated circuit	SN74HC574DW	U1,U2
110	SE00011	SMD rectifier diode	RLS4148 0.5A (LL-34)	D1,D2,D3,D4,D5,D6,D7,D8,D9,D10,D11,D12 ,D13,D14,D15,D16,D17,D18,D19,D20
111	SF00010	SMD transistor	2SC2412K(SOT-23)/(R)	Q18,Q19,Q20,Q21,Q22,Q23,Q24,Q25,Q26, Q27,Q28,Q29,Q30
112	SE00054	SMD L.E.D	yellow 19-21UYC/S530-A2/TR8	L1,L2,L3,L4,L5,L6,L8,L9,L10,L11,L12,L13, L14,L15,L16,L17,L18,L19,L21,L22,L23,L24, L25,L26,L27,L28,L29,L30,L31,L32,L33,L34, L35,L36,L37,L38,L41,L42,L43,L44,L45,L46, L47,L48,L49,L50,L51,L52,L53,L54,L55,L56, L57,L58,L59,L60,L61,L62,L63,L64,L67,L68, L69,L70,L71,L72,L73,L74,L75,L76,L77,L78, L79,L80,L81,L82,L83,L84,L85,L86,L87,L88, L89,L90,L93,L94,L95,L96,L97,L98,L99,L100, L101,L102,L103,L104,L105,L106,L107,L108, L109,L110,L112,L113,L114,L115,L116,L117, L118,L119,L120,L121,L122,L123,L124,L125, L126,L127,L128,L129,L132,L133,L134,L135, L136,L137,L138,L139,L140,L141,L142,L143, L144,L145,L146,L147,L148,L149,L150,L151, L152,L153,L154,L155,L158,L159,L160,L161, L162,L163,L164,L165,L166,L167,L168,L169, L170,L171,L172,L173,L174,L175,L177,L178, L179,L180,L181,L182,L185,L188
113	HC00718	connector	2.54 180° 2*10P 6/11.6mm	CN1
114	AE00221	tin soldering paste	SJ-617	

No.	Part No.	Description	Specification	Remark
115	HK05626	PC board	P-DIGAN207-INOUT-DIP	
116	SE00055	SMD L.E.D	green 19-21SYGC/S530-E3/TR8	L7,L20,L39,L40,L65,L66,L91,L92,L111,L130,L131,L156,L157,L176
117	SF00004	SMD transistor	2SA1036K(SOT-23)/(R)	Q1,Q2,Q3,Q4,Q5,Q6,Q7,Q8,Q9,Q10,Q11,Q12,Q13,Q14,Q15,Q16
118	HL00004	push button switch-RS	6*3.8*2.5mm TRAVEL=0.25	S1,S2,S3,S4,S5,S6,S7,S8,S9,S10,S11,S12,S13,S14,S15,S16,S17,S18,S19,S20
119	SE00004	SMD L.E.D	yellow 67-21UYC/S530-A2/TR8 1210	L183,L184,L186,L187
120	CB00074	electrolytic capacitor	1000uF/10V 8*11mm	C43
121	SA00094	rectifier diode	1N4002/100V	D2,D4,D5,D6,D7,D8
122	CB00075	electrolytic capacitor	2200uF/16V 13*20mm	C19,C21,C26,C27
123	CB00063	electrolytic capacitor	330uF/16V 8*11mm	C28,C29
124	SD00074	integrated circuit	L7805CV(TO-220)(ST)	TR1,TR2
125	HC00081	connector(male)	7P 2.5mm 180°	CN4
126	HC00183	DC jack	KJ-36-S 3.5	CN2
127	HC00078	connector(male)	4P 2.5mm 180°	CN3
128	HC00080	connector(male)	6P 2.5mm 180°	CN1
129	MI00257	heat-sink	25*34.6*12*1.5 DX26	HT1
130	HC00108	stereo MIC jack	6.3 stereo LJB0661-6	X2,X4,X5,X7
131	CG00024	filter-EMI FILTER	PLT09H-2003R	L3
132	HI00161	relay	RY-5W-K,5V	RL1,RL2
133	HC00556	USB socket	UCB-4FR004-B 90°	J1
134	NC00005	silicone insulator	TO-220 square type	
135	NI02249	plastic washer	TW-1(TO-220)	
136	ME00015	color nut	3m/m	
137	MF00037	washer	3.2* 5.5*1t	
138	MG00169	screw	M3*12	
139	SA00093	rectifier diode	1N4148 0.5A	D1,D3
140	AC00002	solder wire	63/37%	
141	HK05628	PC board	P-DIGAN207-INOUT-SMD	
142	HB01600	PCB	DIGAN207-INOUT_VER050306	
143	RD00059	SMD fixed resistor 1/10W	0.0 ±5% 0603	JP1,JP2,R16,R13
144	RD00002	SMD fixed resistor 1/8W	0.0 ±5% 0805	L11,L12,L13,L14,L16,L17
145	CI00075	SMD ceramic capacitor 0603	0.1uF/50V Y5V +80,-20%	C5,C7,C12,C13,C14,C30,C39,C40,C41,C42
146	RD00068	SMD fixed resistor 1/10W	100 ±5% 0603	R11,R12
147	RD00214	SMD precise resistor 1/10W	10.0K ±1% 0603	R14,R18,R19,R52,R56,R57
148	CI00047	SMD ceramic capacitor 0603	10PF/50V C0G±0.25PF(C1608C0G1H100CT)TDK	C3,C4,C6,C8,C9,C17,C18,C20,C22,C23,C31,C32,C33
149	RD00061	SMD fixed resistor 1/10W	10 ±5% 0603	R6,R8
150	RD00216	SMD precise resistor 1/10W	13.3K ±1% 0603	R1,R2,R3,R4,R38,R39,R40,R41
151	RD00271	SMD precise resistor 1/10W	2.67K ±1% 0603	R28,R66
152	RD00363	SMD precise resistor 1/10W	3.16K ±1% 0603	R17,R23,R55,R61
153	RD00285	SMD precise resistor 1/10W	3.24K ±1% 0603	R24,R62
154	SG00122	SMD integrated circuit	NJM4580M-TE3	IC5

No.	Part No.	Description	Specification	Remark
155	CI00063	SMD ceramic capacitor 0603	470PF/50V NPO ±5%	C10,C11,C24,C25
156	CI00055	SMD ceramic capacitor 0603	47PF/50V C0G±5%(C1608C0G1H470JT)/TDK	C1,C2,C15,C16
157	RD00132	SMD fixed resistor 1/4W	47 ±5% 1206	R30,R68
158	RD00286	SMD precise resistor 1/10W	4.53K ±1% 0603	R22,R25,R60,R63
159	RD00093	SMD fixed resistor 1/10W	4.7K ±5% 0603	R9,R10
160	RD00371	SMD precise resistor 1/10W	51.1K ±1% 0603	R15,R53
161	RD00299	SMD precise resistor 1/10W	5.76K ±1% 0603	R20,R58
162	RD00297	SMD precise resistor 1/10W	60.4 ±1% 0603	R21,R26,R59,R64
163	RD00300	SMD precise resistor 1/10W	6.04K ±1% 0603	R27,R65
164	CO00006	SMD chip inductance	BLM21A102SPT/(MURATA)	L1,L2,L4,L5,L6,L7,L8,L9,L10,L15,L18,L19
165	SG00118	SMD integrated circuit	MC33079DT(ST)MC33079D(ON)	IC7,IC8
166	AE00221	tin soldering paste	SJ-617	
167	RD00365	SMD precise resistor 1/10W	5.62K ±1% 0603	R5,R7,R42,R44
168	SF00056	transistor	MMBT3904(SOT-23)/(PHI)	TR3,TR4
169	NF02233	user manual English	DIGAN2.7 ALTO_V1.0	
170	NH00149	paper	889*640mm	
171	NI03353	silicone sleeve	DIGAN 2.7 5.6*3.2*56_V1.0	