

# **Service** *Manual*

**MODEL: ELVIS 15.2XL**

# CONTENT

1. Introduction.....	1
2. Specification.....	2
3. Block Diagram.....	3
4. Schematic Diagram.....	4
5. PCB Layout.....	5
6. Exploded View & Mechanical Parts List.....	6
7. BOM.....	8

## 1. Introduction

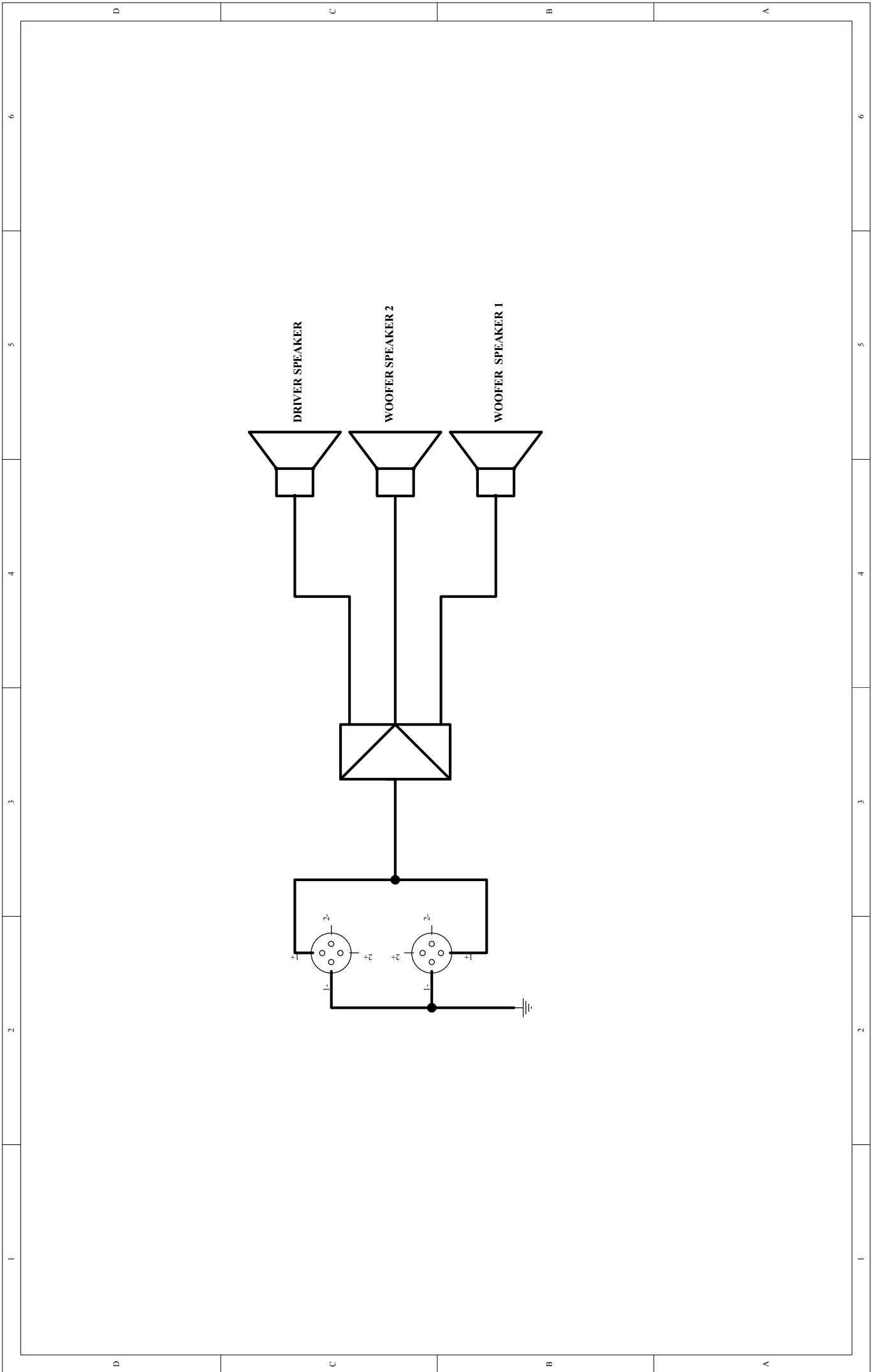
These cabinets is designed for professional stage performance .Using density Particle Board and high quality carpet for the body of the cabinet made it more durable .The special handle shows unique Italy style. With the accurate crossover point made the timbre very clean.

ES12M adopt special horn in polypropylene reinforced. With wide directional angle  $80^{\circ} \pm 10^{\circ}$  (1KHZ-16KHZ)and 180W AES/360W Peak power. Matching the ELVIS 12S/15S(SUB WOOFER) with ELVIS 12/15 made the acoustics of the cabinet clean and the bass strong. All these characters made it very suitable for any place.

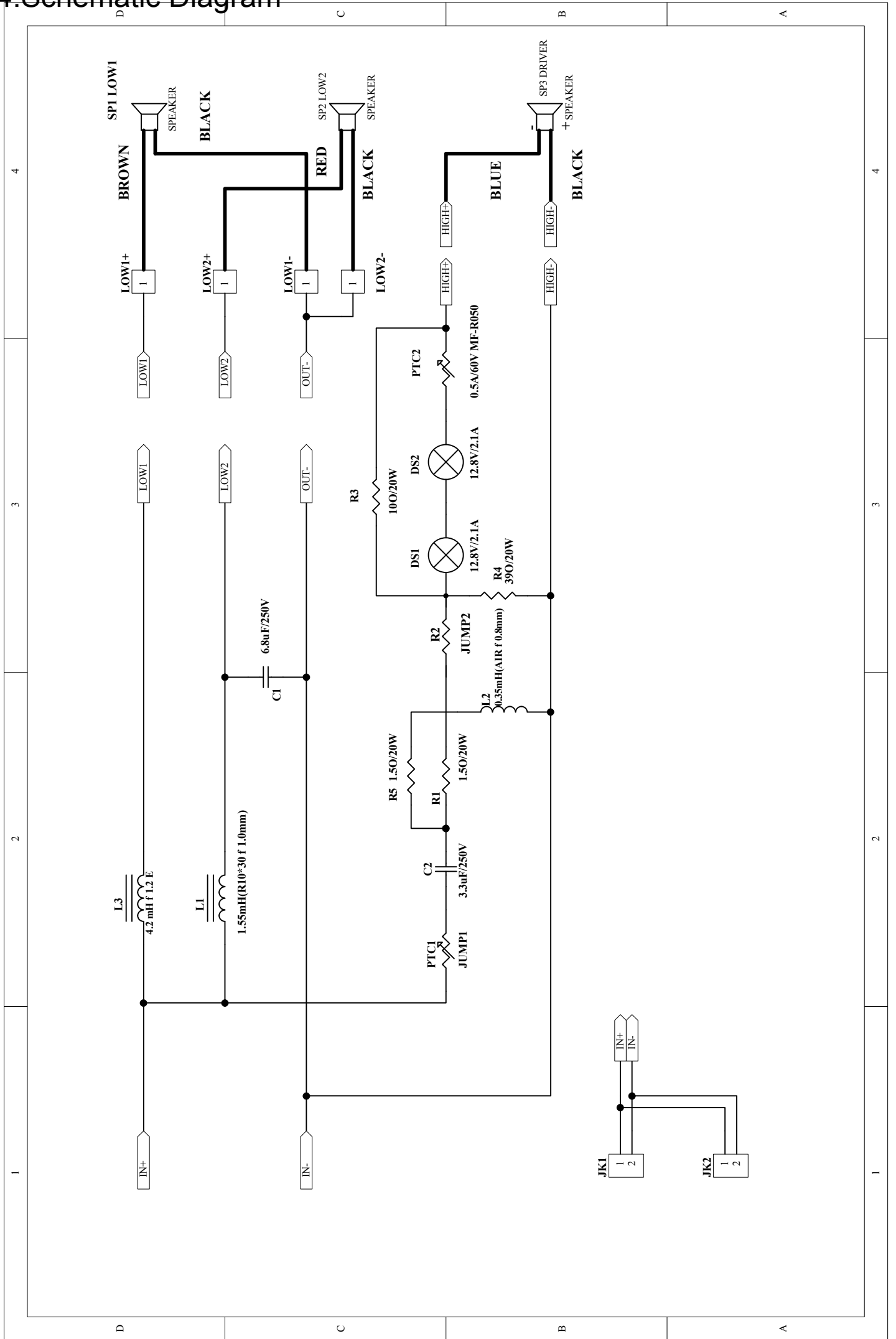
## 2. Specification

Technical Specification	ELVIS15.2XL
System type	3-way vented box
Continuous power	500W AES standard
Peak Power Rating	1000W Peak
Sensitivity (1W, 1m)	101dB/122dB Max
Frequency Response	55Hz/20kHz +/-6dB
Impedance	4Ohm Nominal
Crossover Frequency	2200Hz 12dB/oct
Protection	Electronics High Frequencies Protection
Low-Frequency	2*15"/385mm woofer
High-Frequency	1"Compression Driver
Spherical Wave Guide	Custom Horn with Polypropilene Reinforced
Horn Coverage	80° H×80° V
Connectors(+1/-1)	2xSPK4 Input/Link @+1/-1 connected - +2/-2 not connected
Enclosure	Trapezoidal cabinet in 18mm particle board P.B. -Covered with resistant carpet -Black metal grille protection
Dimensions HxWxD	1114 ×452× 449mm
Net Weight lbs/kg	93.92lbs/42.60kg
Gross Weight lbs/kg	107.94lbs/48.96kg
Volume	11.91CFT

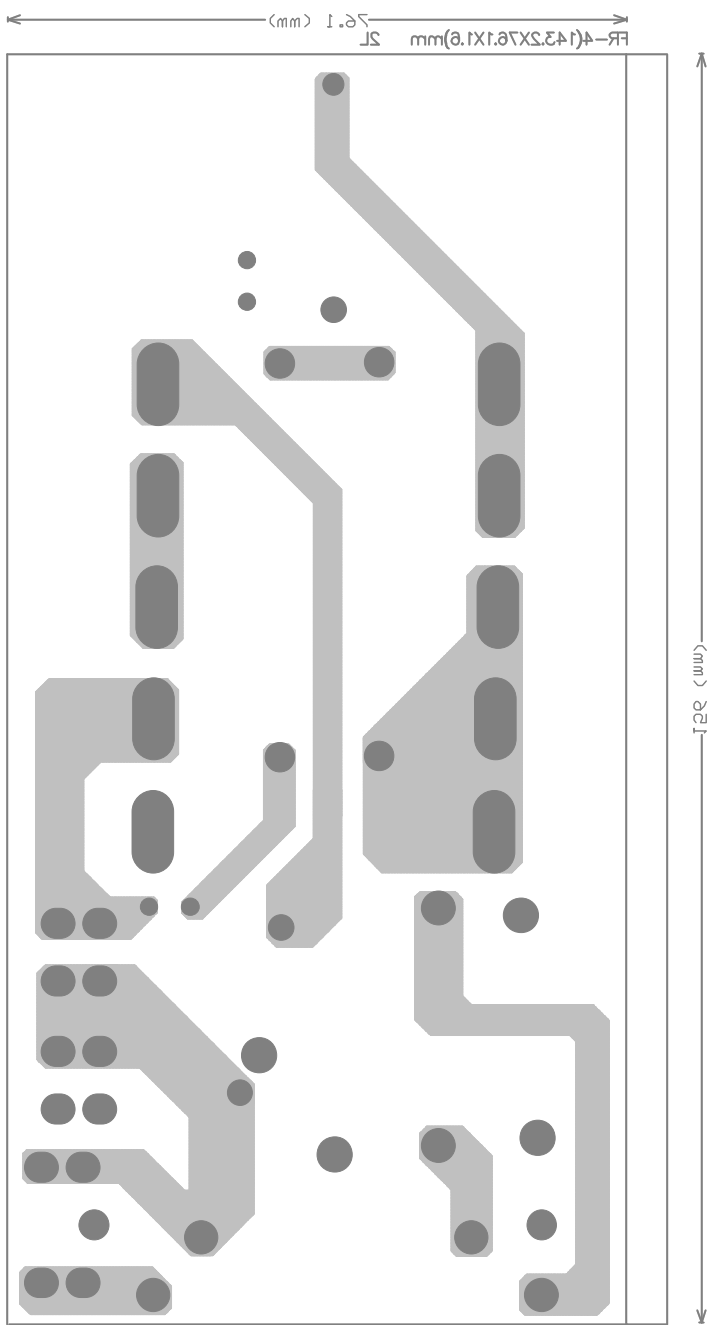
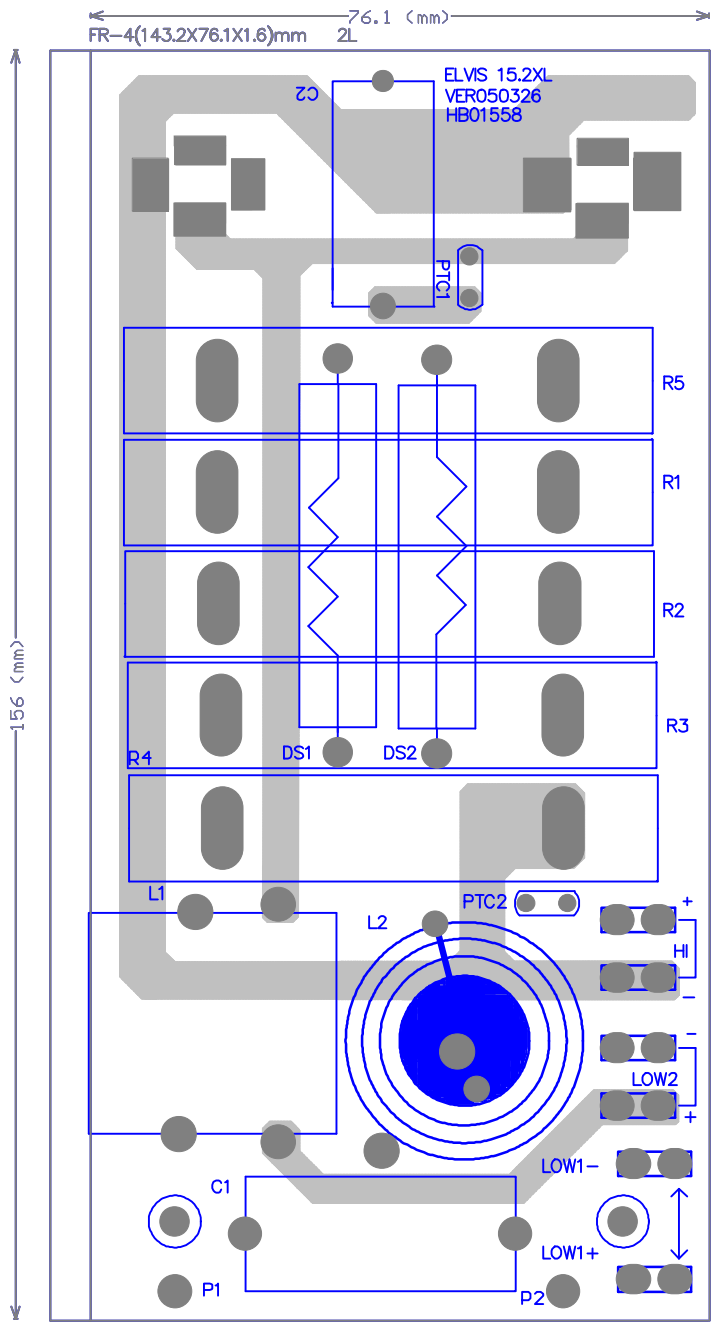
# 3.Block Diagram

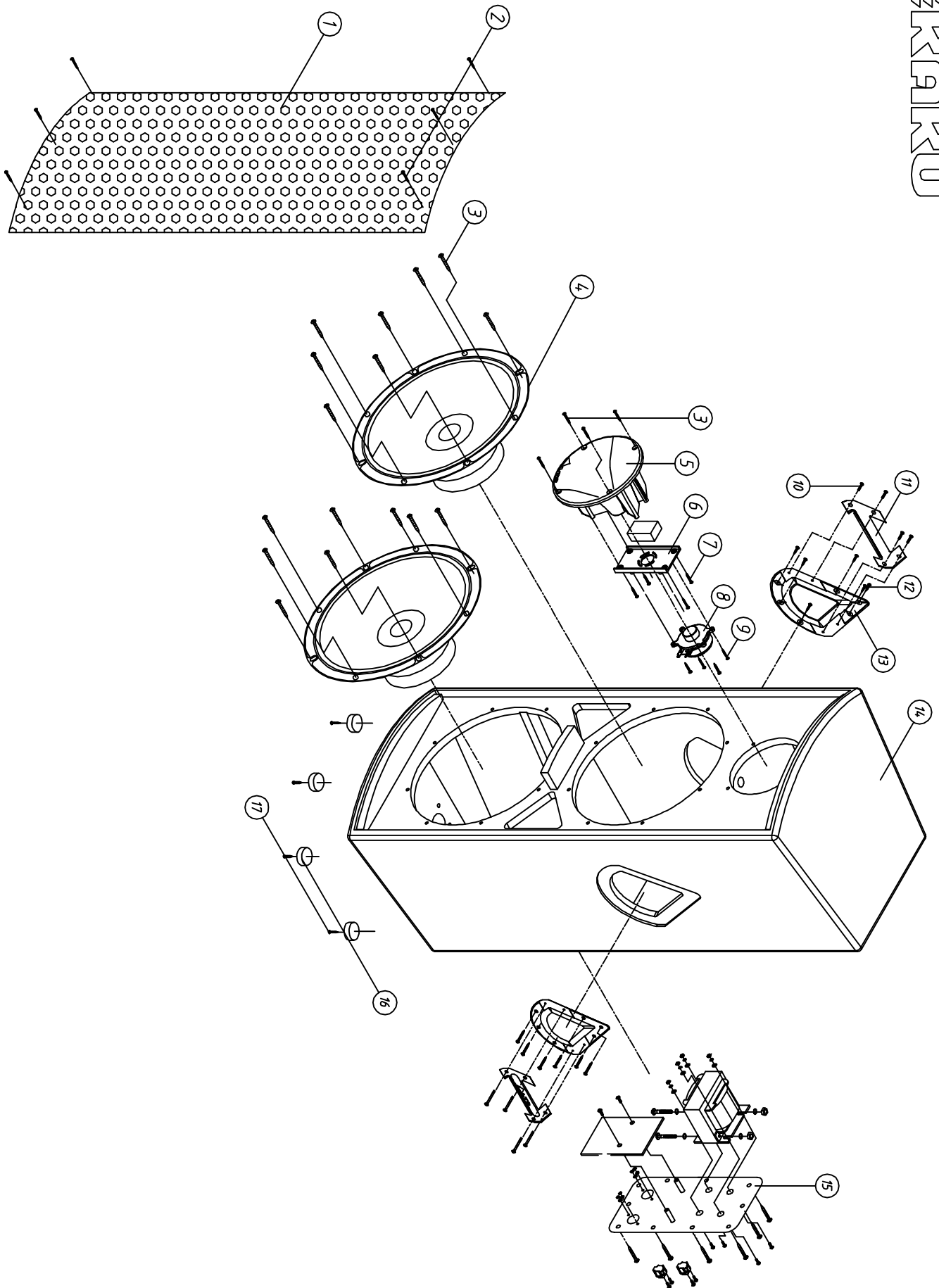


# 4. Schematic Diagram



# 5.PCB Layout







## Part List

No.	Item No.	Item Description	Specification	PCS
1	MD00672	ZC-grille-spray black-paint	ELVIS 15.2XL ALTO_V1.0	1
2	MG00349	black-plated screw -T headφ8	M3*16	3
3	MG00350	black-plated screw -T headφ10	M5*30	20
4	HK03077	K-woofer	15inch 150W 60 ELVIS 15(Z00823_LP385.65)	2
5	NI02242	horn	ELVIS 10;12;15 432C	1
6	NI02374	fixed board-ABS	70*135*10 432C	1
7	MG00352	black-plated screw-pill-iron plate	M4*25	4
8	HG00081	driver	PA-D597 P-AUDIO 80	1
9	MG00351	black-plated screw-pill-iron plate	M4*16	16
10	MG00338	black-plated screw -T headφ8	M4*30mm	8
11	NI02376	handle-ABS	85.6*207*7 432C	2
12	MG00536	black-plated screw-pill-iron plate	M4*20_V1.0	12
13	NI02375	handle cover-ABS	ELVIS 10;12;15 432C	2
14	NC00625	cabinet	ELVIS 15.2XL 15 inch gray_V1.0	1
15	MI02715	ZC-fixed board	ELVIS 15.2XL ALTO_V1.0	1
16	NI02426	rubber foot cushion	φ37*15.5mm	4
17	MG00360	black-plated-flat-iron plate	M4*25mm	4

## 7.BOM

No	Part No.	Description	Specification	Remark
1	HK05469	PC board	P-ELVIS 15.2XL-XOVER	
2	HB01558	PCB	ELVIS 15.2 XL_VER050326	
3	CN00056	crossover inductance	1.55mH(1.0mmφ1.50~1.60Mh)	L1
4	CN00049	crossover inductance	0.35mH(0.8mmφ0.34-0.36mH)	L2
5	RA00998	chassis bracket 20W	1.5Ω SQY type	R1,R5
6	HA02275	wire	100mm	R2
7	RA00988	cement resistor 20W	10Ω SQY type	R3
8	RA00995	chassis bracket 20W	39Ω SQY type	R4
9	CF00091	metal-film capacitor MEF	6.8uF/250V 5%	C1
10	CF00090	metal-film capacitor MEF	3.3uF/250V 5%	C2
11	RG00012	over current protector	0.5A 60V MF-R050	PTC2
12	HH00036	lamp	SK3/CWT 12.8V 2.1A	DS1,DS2
13	HA01919	jumper	5mm	PTC1
14	HA02249	wire	φ0.6_Sn-plated	
15	HC00324	connect terminal	6.5m/m (PC250)	LOW1+,LOW1- ,LOW2+,LOW2- ,HI-,HI+
16	CN00061	crossover inductance	4.2mH(wirepathφ1.2mm E type)	
17	MI02715	fixed board	ELVIS 15.2XL ALTO_V1.0	
18	MI02712	fixed board	ELVIS 15.2XL	
19	MI02711	fixed board	ELVIS 15.2XL 1.5t*276*120_V1.1	
20	MJ00088	single light board	1.5*2135*1220 30.67kg	
21	ME00093	iron pillar	M3*26.5*0.5PH	
22	HC00218	speakon	SKCB201-4P	
23	MG00060	black-plated screw	M3*6	
24	MG00042	black-plated screw	M3*10	
25	ME00015	color nut	3m/m	
26	NC00625	cabinet	18t*1116*452.385*449_V1.1	
27	NC00644	side cover board	ELVIS 15.2XL 1088*407.5*18t left_V1.0	
28	NC00236	Shaving board	2440*1220*18t_V1.0	
29	NC00643	side cover board	ELVIS 15.2XL 1088*407.5*18t right_V1.0	
30	NC00236	Shaving board	2440*1220*18t_V1.0	
31	NC00645	rear board	ELVIS 15.2XL 1088*326.5*18t_V1.0	
32	NC00236	Shaving board	2440*1220*18t_V1.0	
33	NC00646	front board	ELVIS 15.2XL 1088*423.5*18t_V1.0	
34	NC00236	Shaving board	2440*1220*18t_V1.0	
35	NC00647	rear board	ELVIS 15.2XL 452.5*449*18t_V1.0	
36	NC00236	Shaving board	2440*1220*18t_V1.0	
37	NC00642	barrier	ELVIS 15.2XL 410*360*18t middle_V1.0	
38	NC00236	Shaving board	2440*1220*18t_V1.0	
39	ND00544	dust mesh cap	2.5t*1.8M*2M YB-153 gray_V1.0	
40	ND00415	Carpet cloth	2m*50m*2.5t*310g/ YB-153_V1.0	
41	ND00545	absorb sound sponge	40t*360*900mm	
42	ND00454	Carpet cloth	25m*1m*40t white_V1.0	

No	Part No.	Description	Specification	Remark
43	ME00085	nut	M4	
44	ME00082	nut	M5	
45	NI02426	foot cushion	φ37*15.5mm	
46	MG00360	black-plated screw	M4*25mm	
47	MG00338	black-plated screw	M4*30mm	
48	MG00536	black-plated screw	M4*20_V1.0	
49	NI02375	handle cover	ELVIS 10;12;15 432C	
50	NI02376	handle	85.6*207*7 432C	
51	MJ01146	ZE-iron plate-Ni	2t*201*79.6mm ELVIS	
52	MJ01166	iron board	2t*201*79.6mm ELVIS10	
53	MJ01154	single light board	2.0t*1850*950mm 27.6kg	
54	MD00672	grille	ELVIS 15.2XL ALTO_V1.0	
55	MD00670	grille	ELVIS 15.2XL	
56	MD00669	grille	1.2t*1075*10.5 PH=φ4*5_V1.1	
57	MD00671	net-material	1.2t*1075*443 PH=φ4*5_V1.1.	
58	MG00349	screw	M3*16	
59	HK03077	woofer	5" 150W 6Ω ELVIS 15(Z00823_LP385.65)	
60	NH00235	cone	B0822B_CN 385.65T3 Z2 40HZ	
61	NH00237	cushion	C0910A_GR 385/6+2	
62	ND00223	spider-RS	C0830A_CT 65-145/12 C3	
63	NH00241	dust cap	E0533A_CP 98/C	
64	HK03051	magnet circuit	F0809B_CM 65/1445.8 F30 J	
65	MH01648	washer	I0811A_PS 65/1450.8 J	
66	MH01647	magnet	G0450A_D154*73*19mm	
67	MH01649	T type middle pillar	H0811A_PN 65/1450.10 D30	
68	MI01613	bracket	L0810B_CR 385/J N_V1.1	
69	HC00426	terminal	M0021B_PT2.1	
70	HC00496	connect terminal	0.8*13*16.3mm	
71	HC00495	connect terminal	0.8*13*16.3mm	
72	NI02583	terminal block	3.5*24.5*3t	
73	MH01110	rivet	M0500A_OU-30	
74	HA02494	strand	TA4X4YKA42W*120mm	
75	HA02079	strand	TA4X4YKA42W*1M	
76	ND00228	sponge	S0720B_NYLON NET D45	
77	NE16118	lable	HK03077_V1.0	
78	NI00014	membrane	0.035*1M	
79	NH00012	bond paper	0.04*1M	
80	HG00201	voice coil	BSV64.47*35*5.25Ω	
81	HG00081	driver	PA-D597 P-AUDIO 8Ω	
82	MG00350	black-plated screw	M5*30	
83	MG00351	black-plated screw	M4*16	
84	MG00352	black-plated screw	M4*25	
85	NI02242	horn	ELVIS 10;12;15 432C	
86	NI02374	fixed board	70*135*10 432C	

No	Part No.	Description	Specification	Remark
87	ND00231	sponge	15*50*50mm	
88	HA02320	single terminal wiring	800mm UL1015 18AWG	
89	HA02520	single terminal wiring	750mm UL1015 18AWG	
90	HA02815	single terminal wiring	800mm UL1015 18AWG	
91	NE11750	label	ALTO PC	
92	NH00334	cone paper	0.040*1m	
93	NE04332	label	ELVIS 15.2XL_V1.0	
94	NI00014	membrane	0.035*1M	
95	NH00012	bond paper	0.04*1M	
96	NB03843	carton	ELVIS 15.2XL ALTO_V1.1	
97	NA00405	silk wadding-RS	ELVIS 15.2XL_V1.0	
98	NF02169	instruction	ELVIS 15.2XL ALTO_V1.0	
99	NH00149	paper	889*640mm	
100	NF00061	assurance card	ALTO	
101	NA00279	clip-chain bag	0.04t*100*150mm_V1.0	
102	AD00012	twin adhesive	90*120mm_V1.0	
103	NA00252	PE bag	0.05t*1800*1150mm_V1.0	
104	NB03934	paper defend horn	ELVIS15.2XL 1151*75mm_V1.0	
105	NE14676	label	ELVIS 15.2XL ALTO_V1.0	
106	NE11168	label	HK 15 ALTO	
107	NH00012	bond paper	0.04*1M	
108	NI00014	membrane	0.035*1M	
109	NA00122	PE bag	0.04t*350*230mm	