

Service *Manual*

MODEL: MS12S/12SA

CONTENT

1. INTRODUCTION.....	1
2. TECHNICAL SPECIFICATION.....	2
3. BLOCK DIAGRAM & SCHEMATIC DIAGRAM.....	4
4. PCB LAYOUT.....	12
5. TEST PROCEDURE.....	16
6. EXPLODED VIEW & MECHANICAL PARTS LIST.....	17
7. BOM.....	20

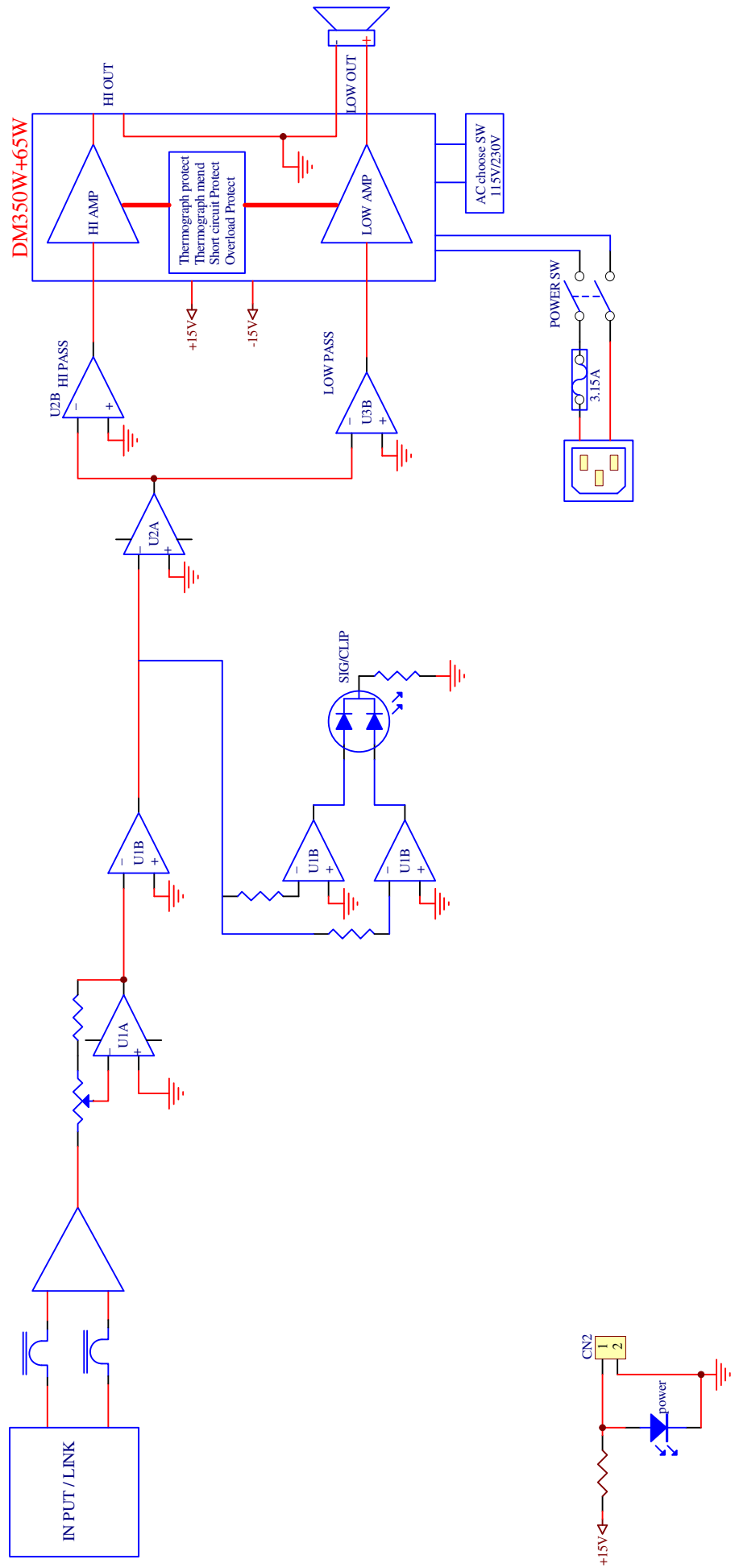
1 INTRODUCTION

The MS series speakers are designed for professional stage, using multilayer PLYWOOD 15mm for cabinet, one metal handle, enjoying strong subwoofer. Attractive appearance with black paint finishing, containing precise crossover frequency for good performance, four rubber corners in bottom bracket and sides to protect the unit. User can select different location for own need, MS12S includes passive crossover, MS12SA includes precise electronic crossover, with 12” high power woofer used with CLASS D amplifier, especially applied to conference and small activities.

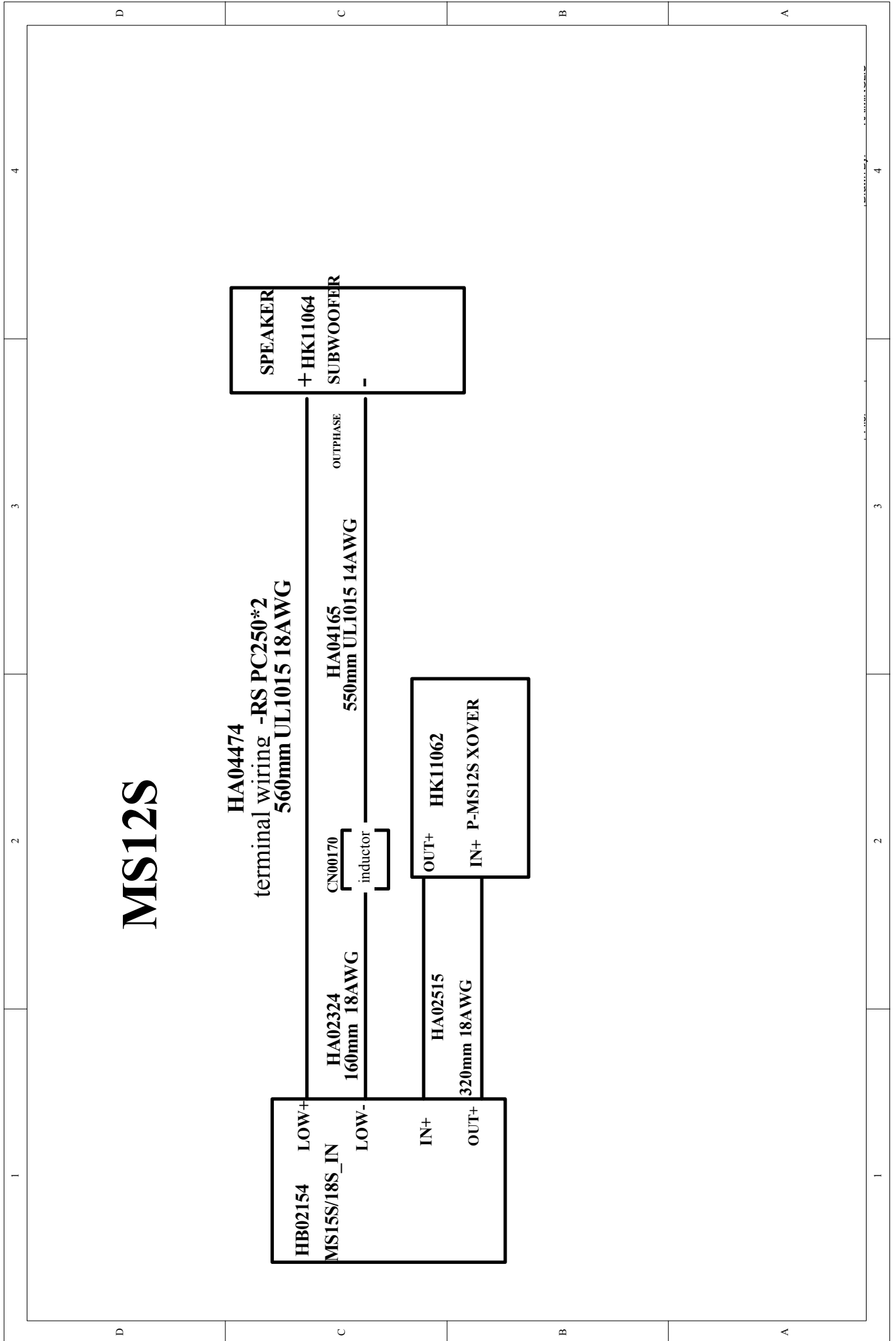
2 TECHNICAL SPECIFICATION

3 BLOCK DIAGRAM

ELVIS I SSA MKII

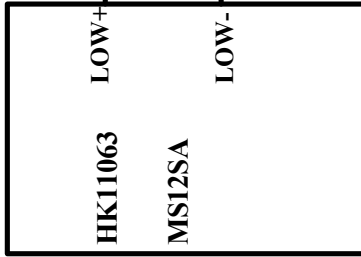


SCHEMATIC DIAGRAM



MS12SA

HA02520
terminal wiring -RS PC250*4
750mm UL1015 18AWG

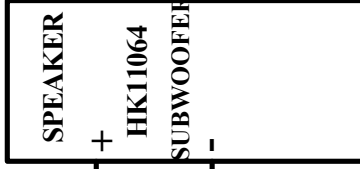


blown

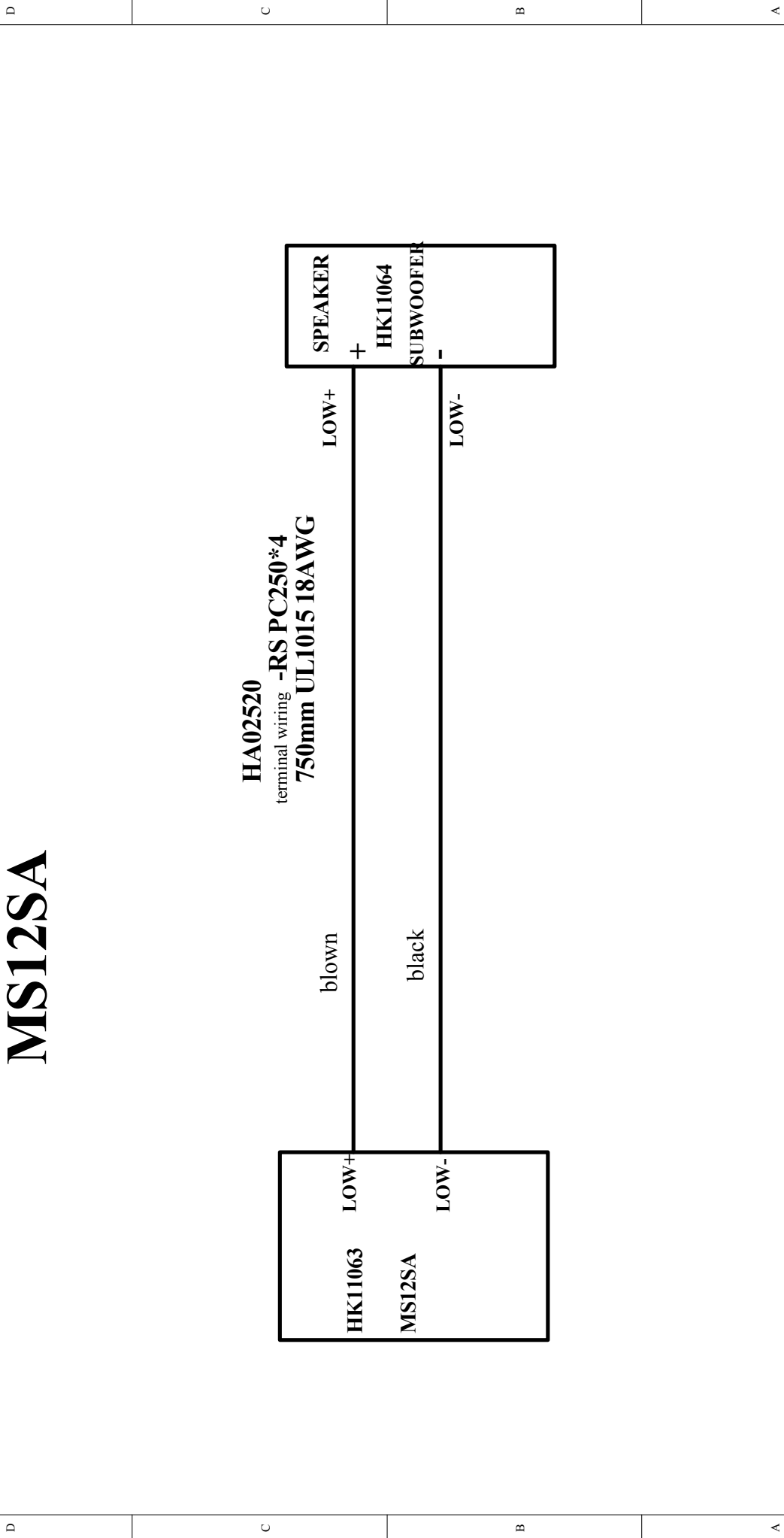
black

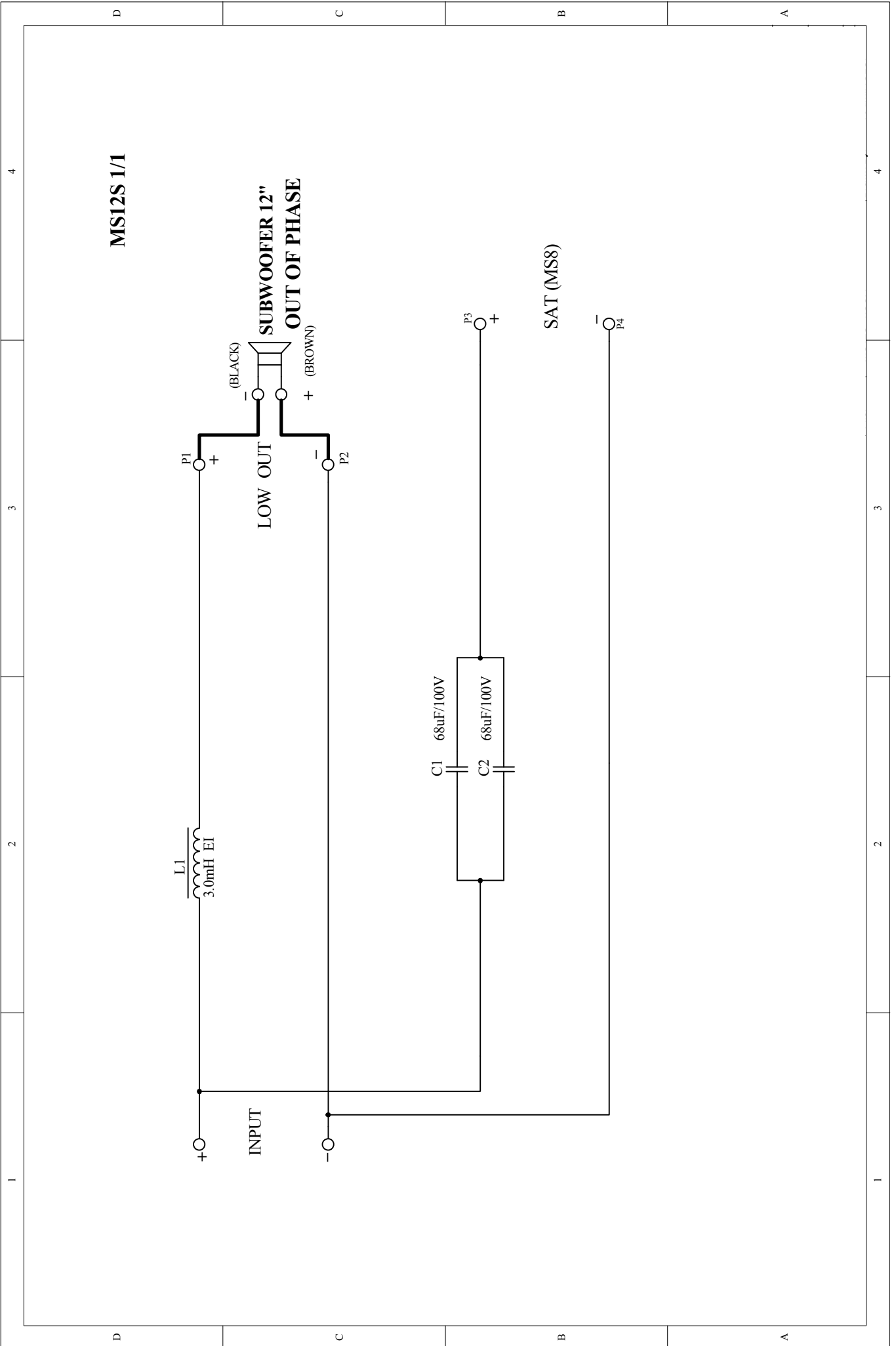
LOW+

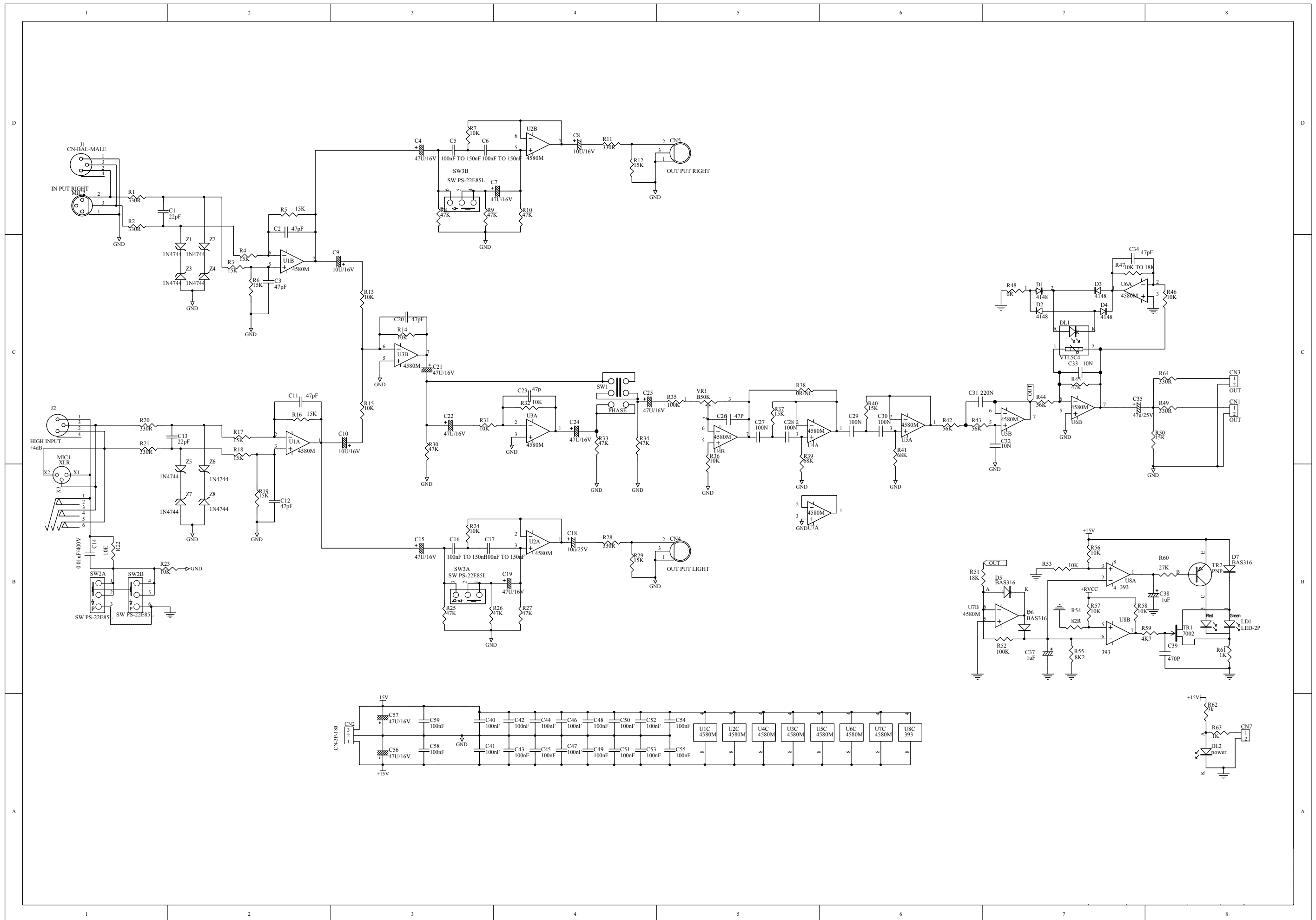
LOW-

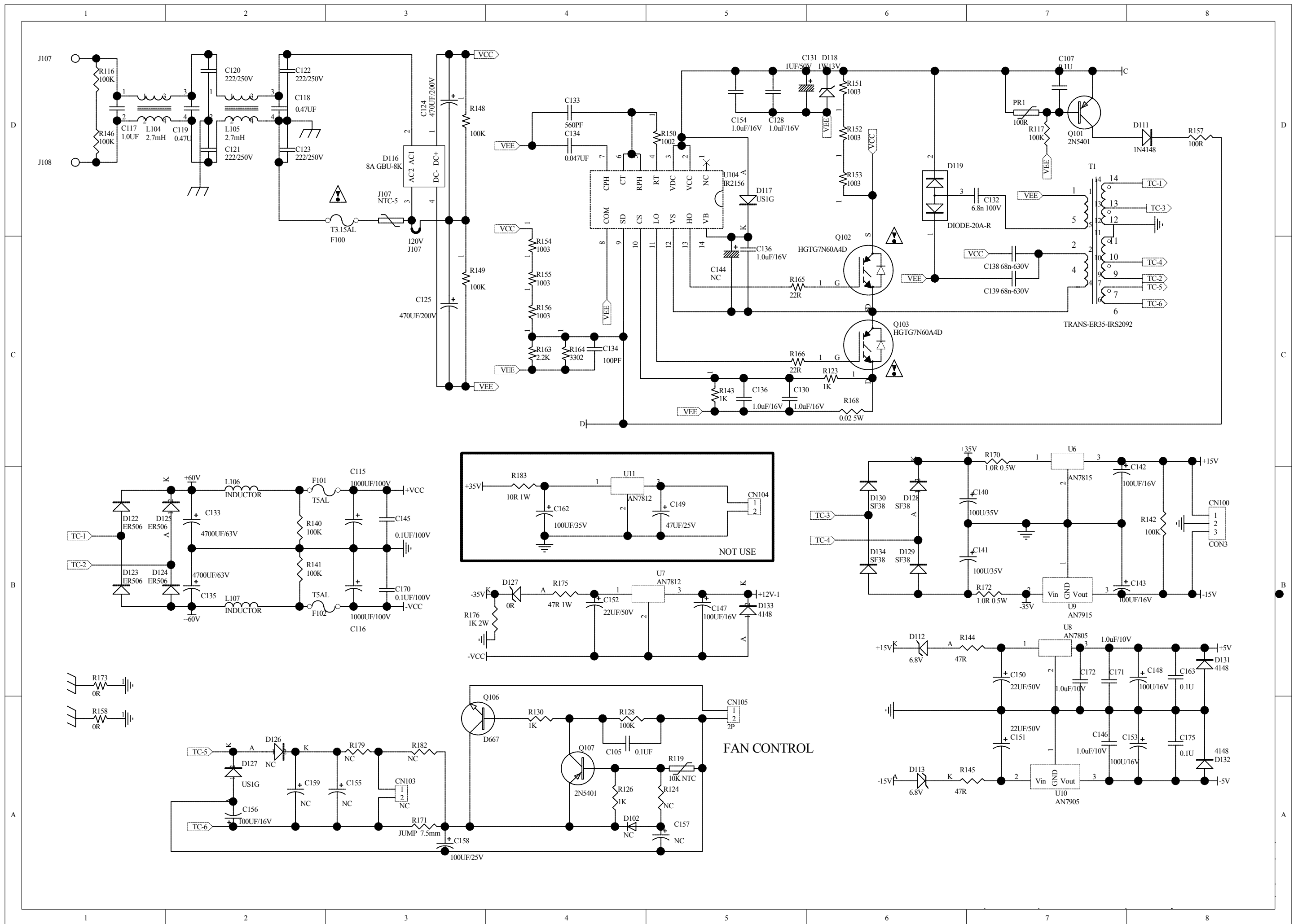


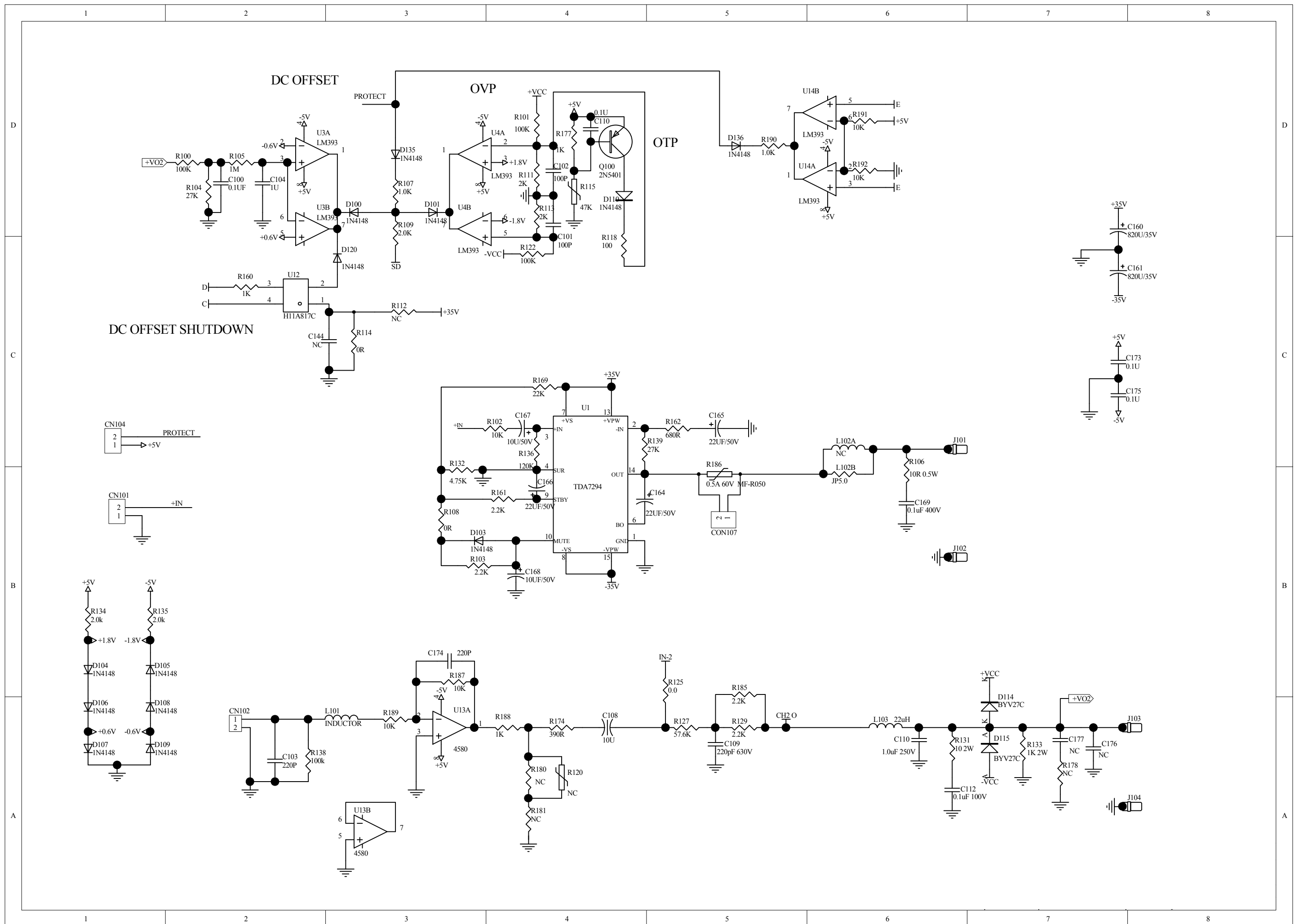
1 2 3 4

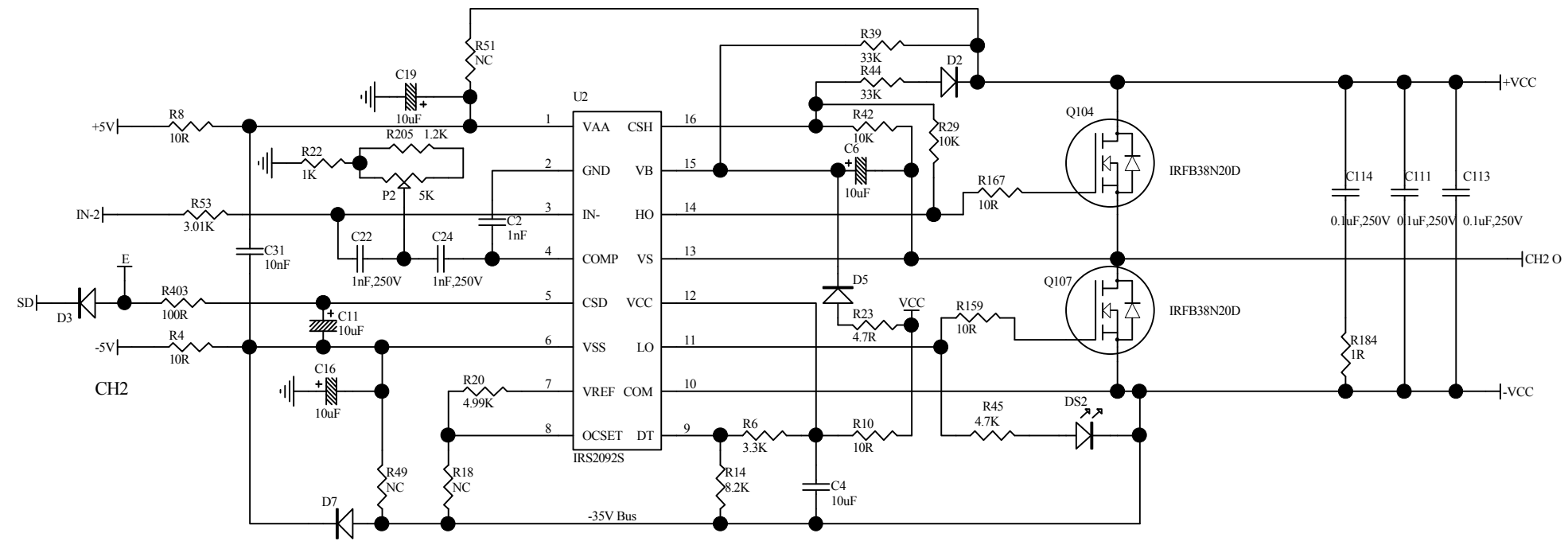




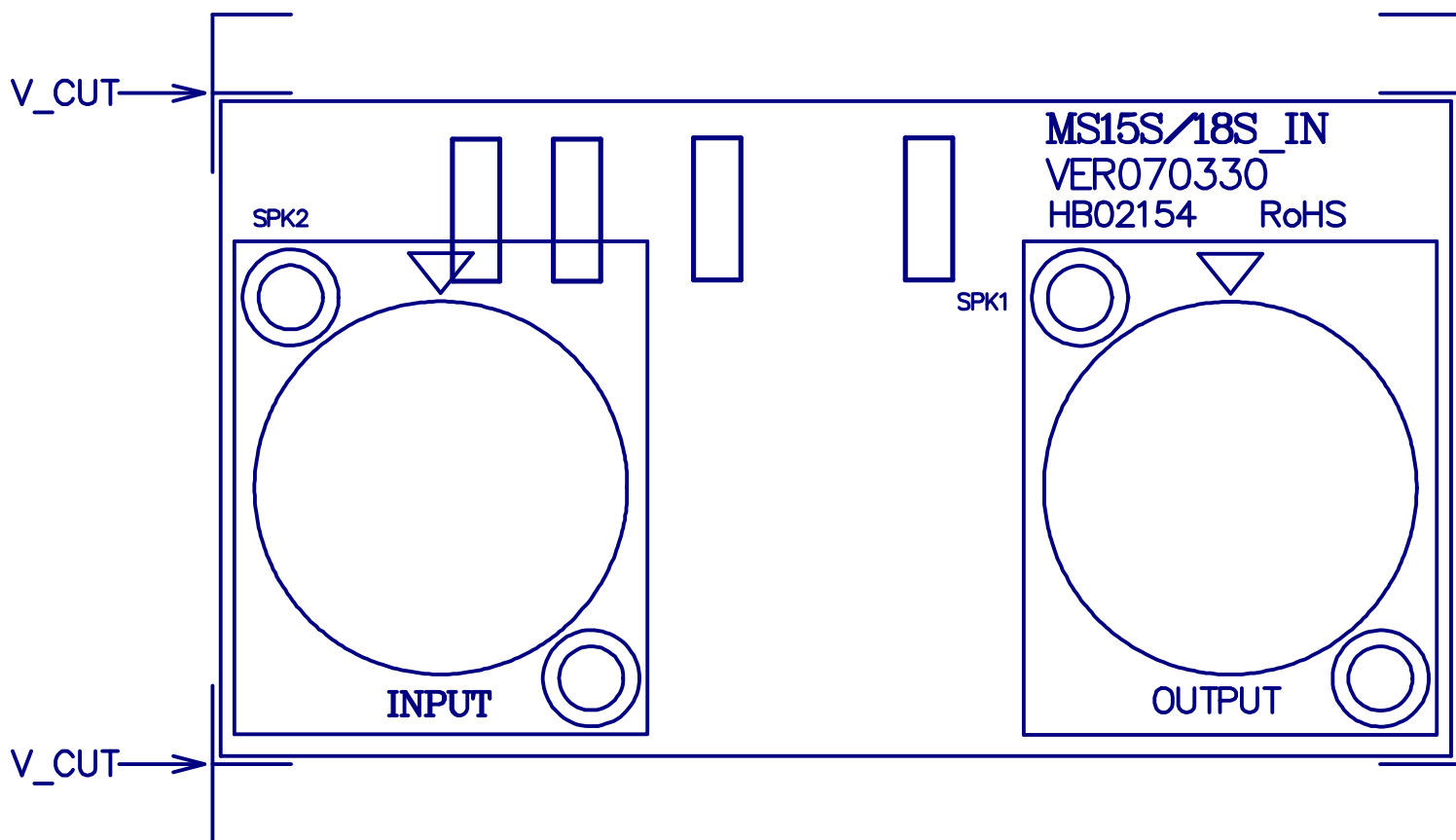
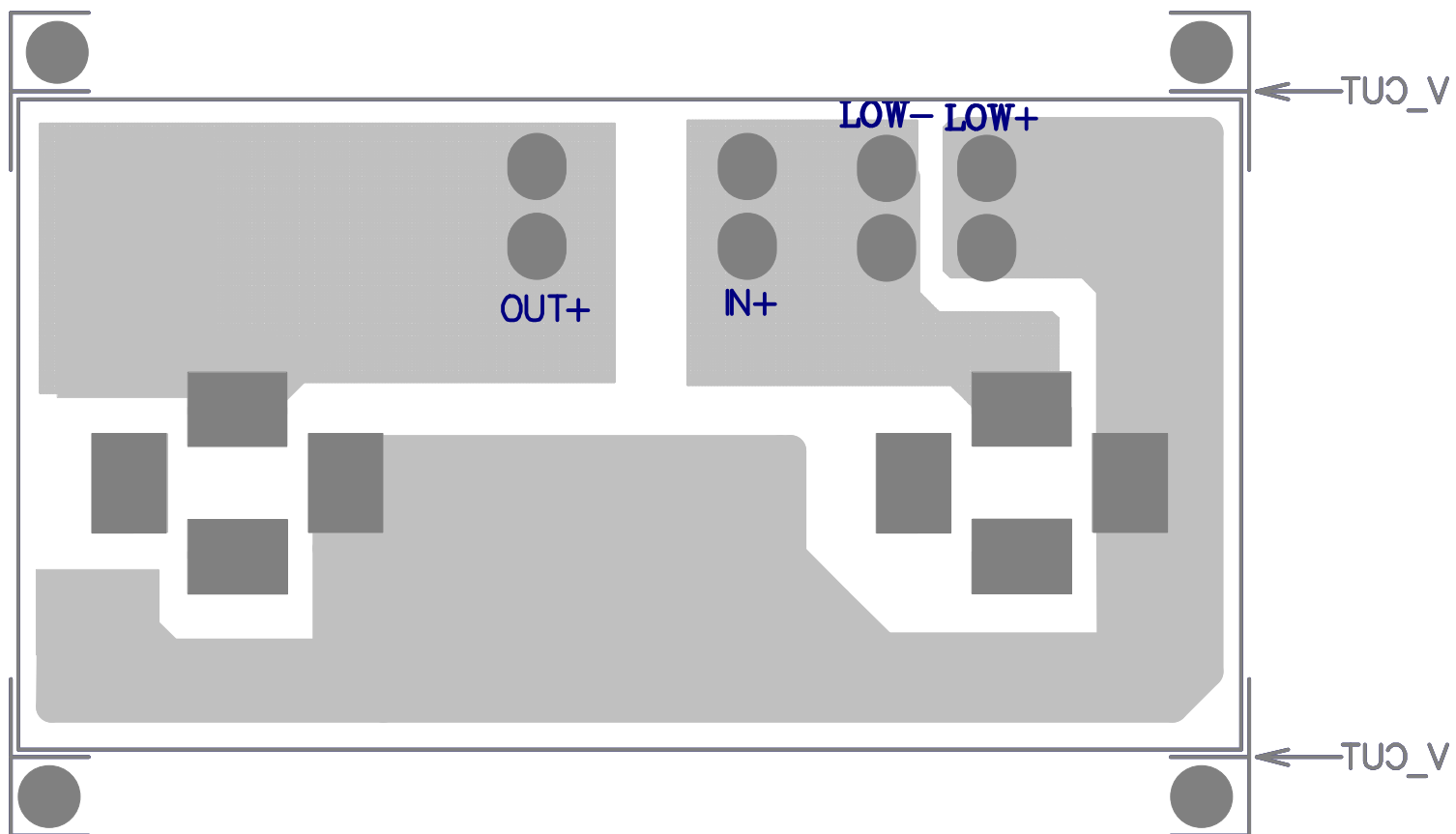


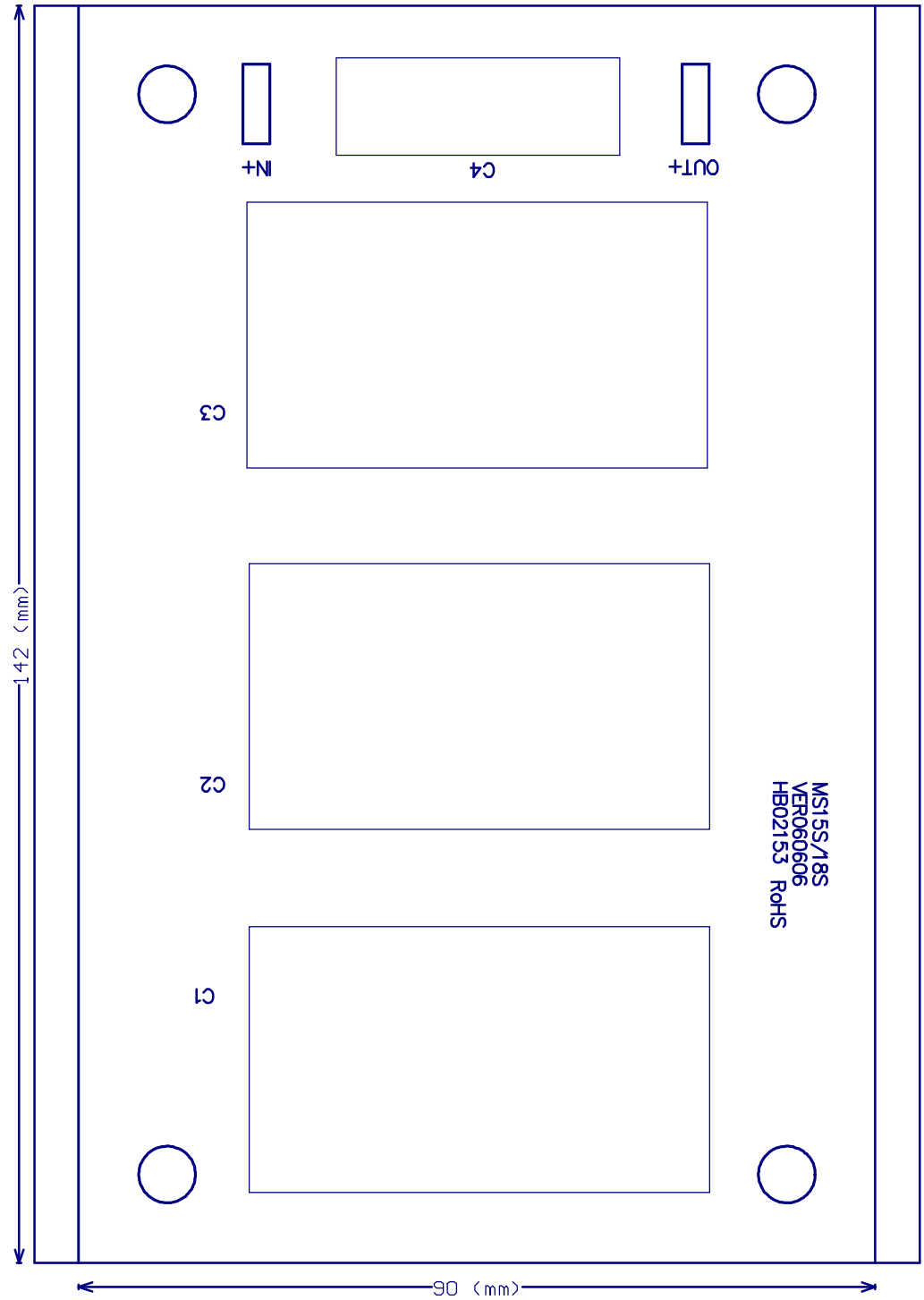
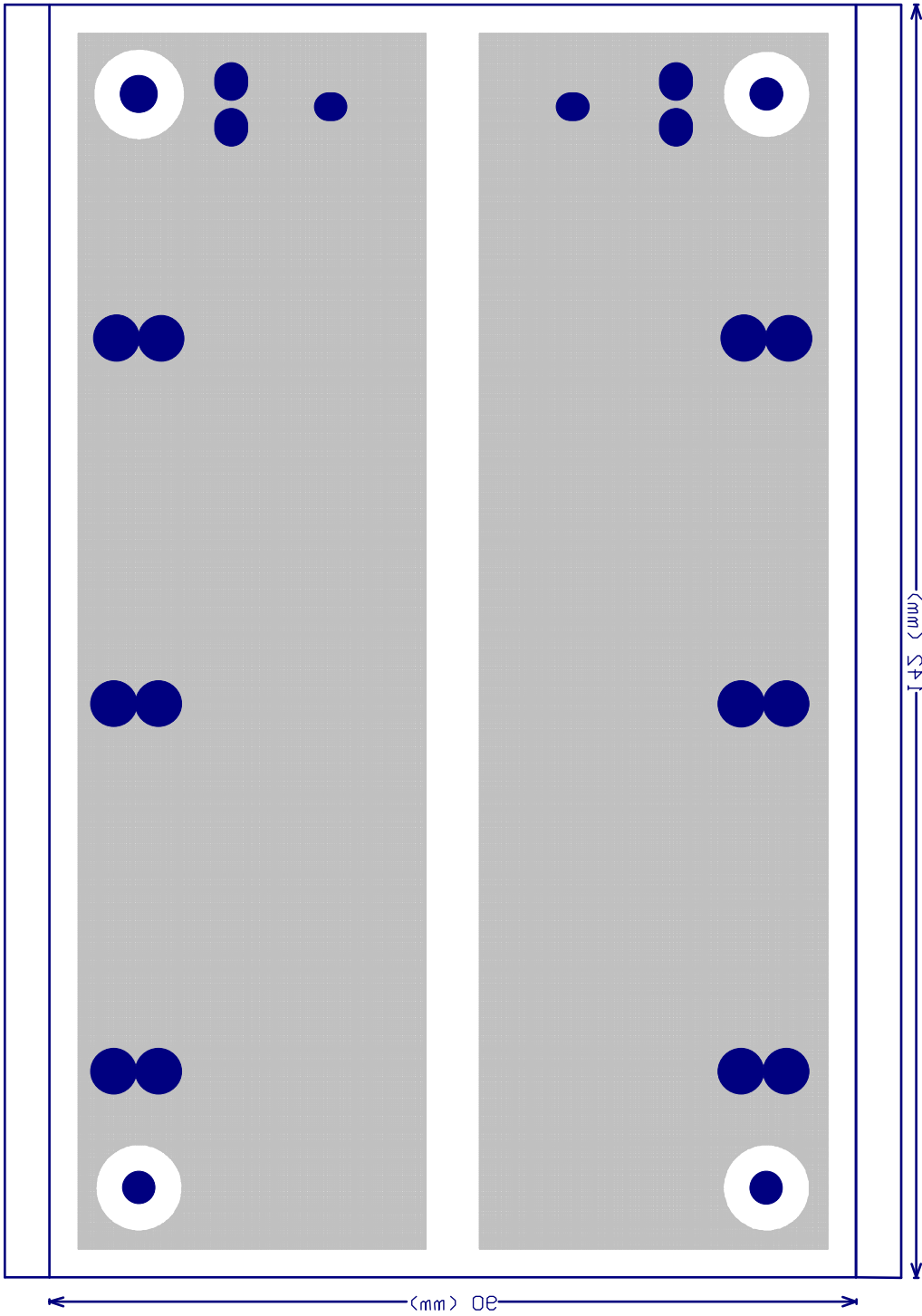


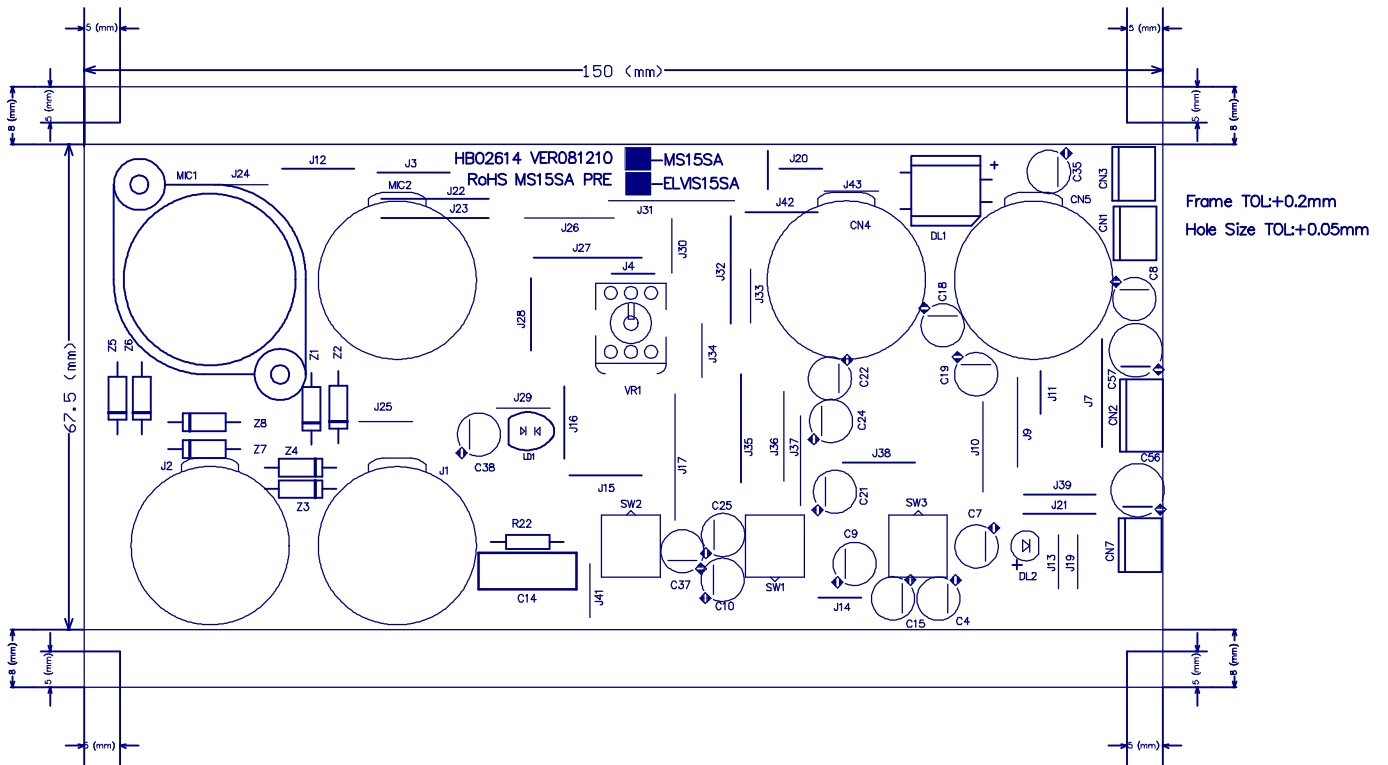
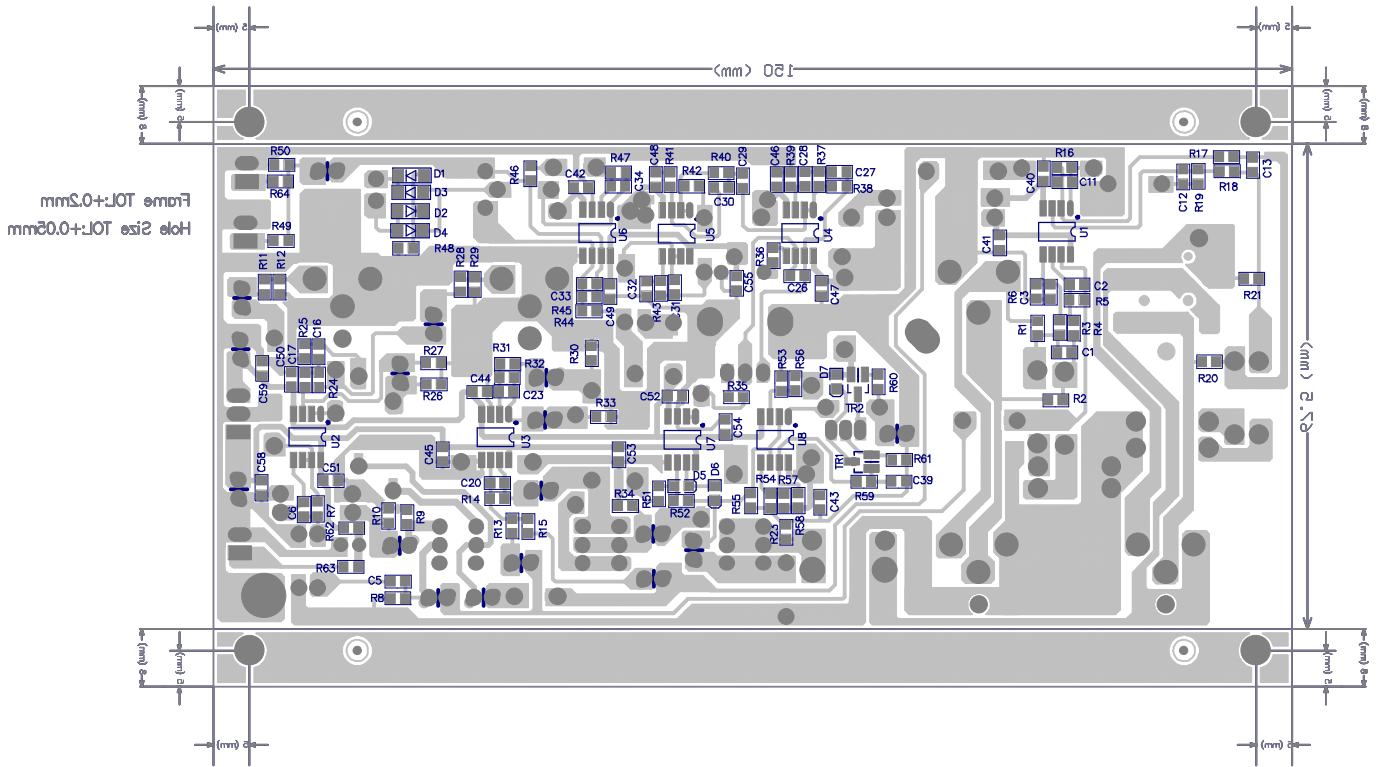


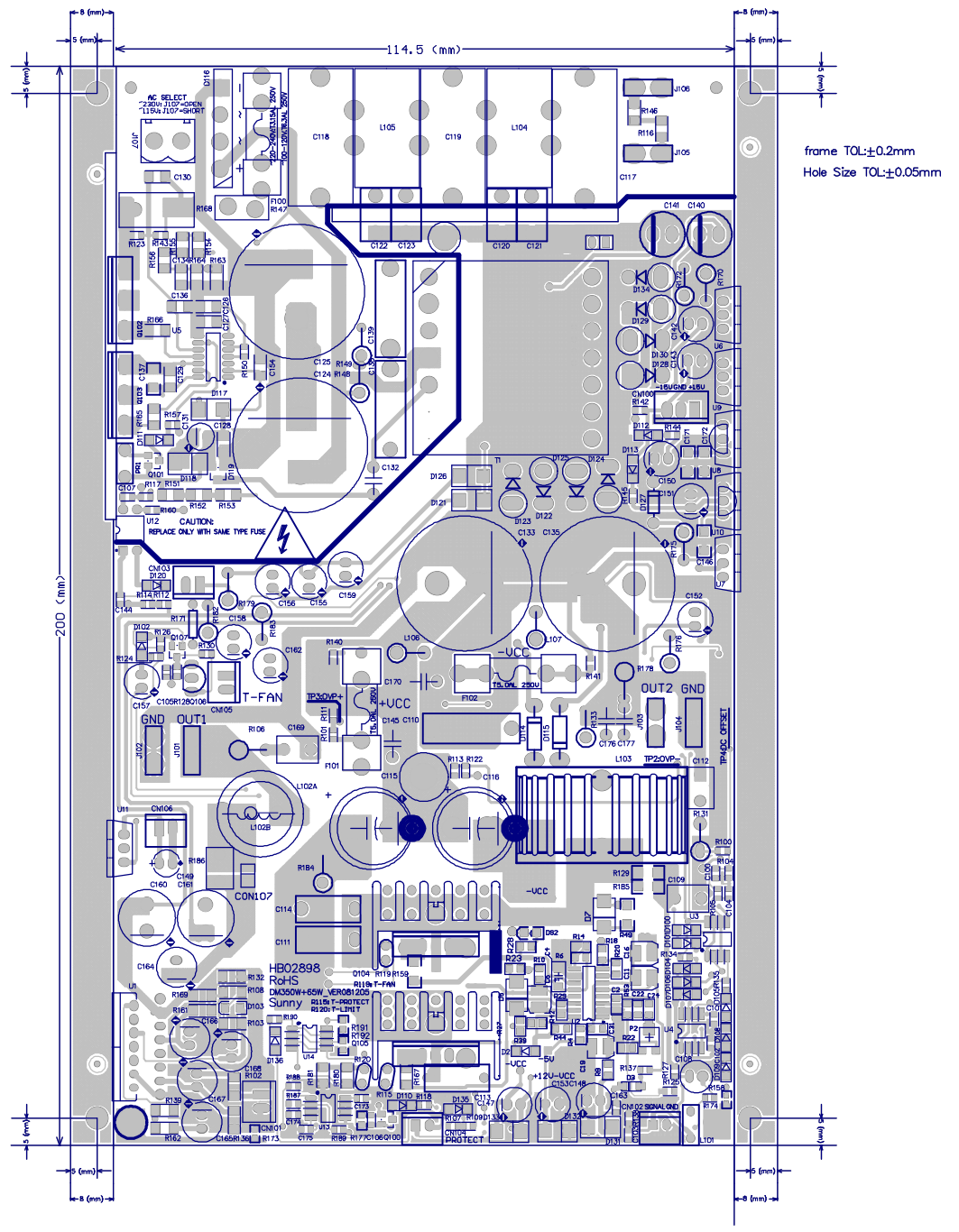
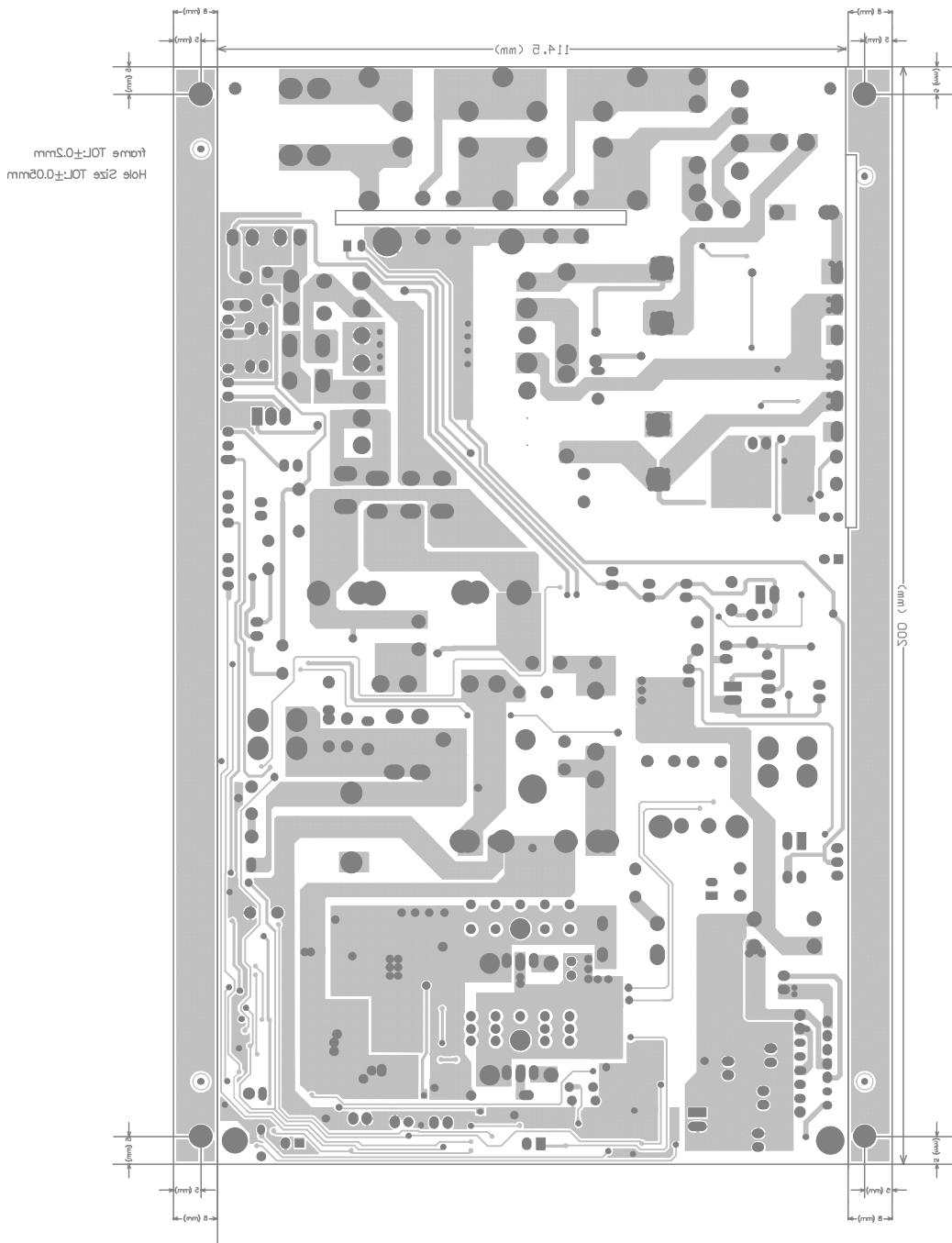


4 PCB LAYOUT









5 TEST PROCEDURE

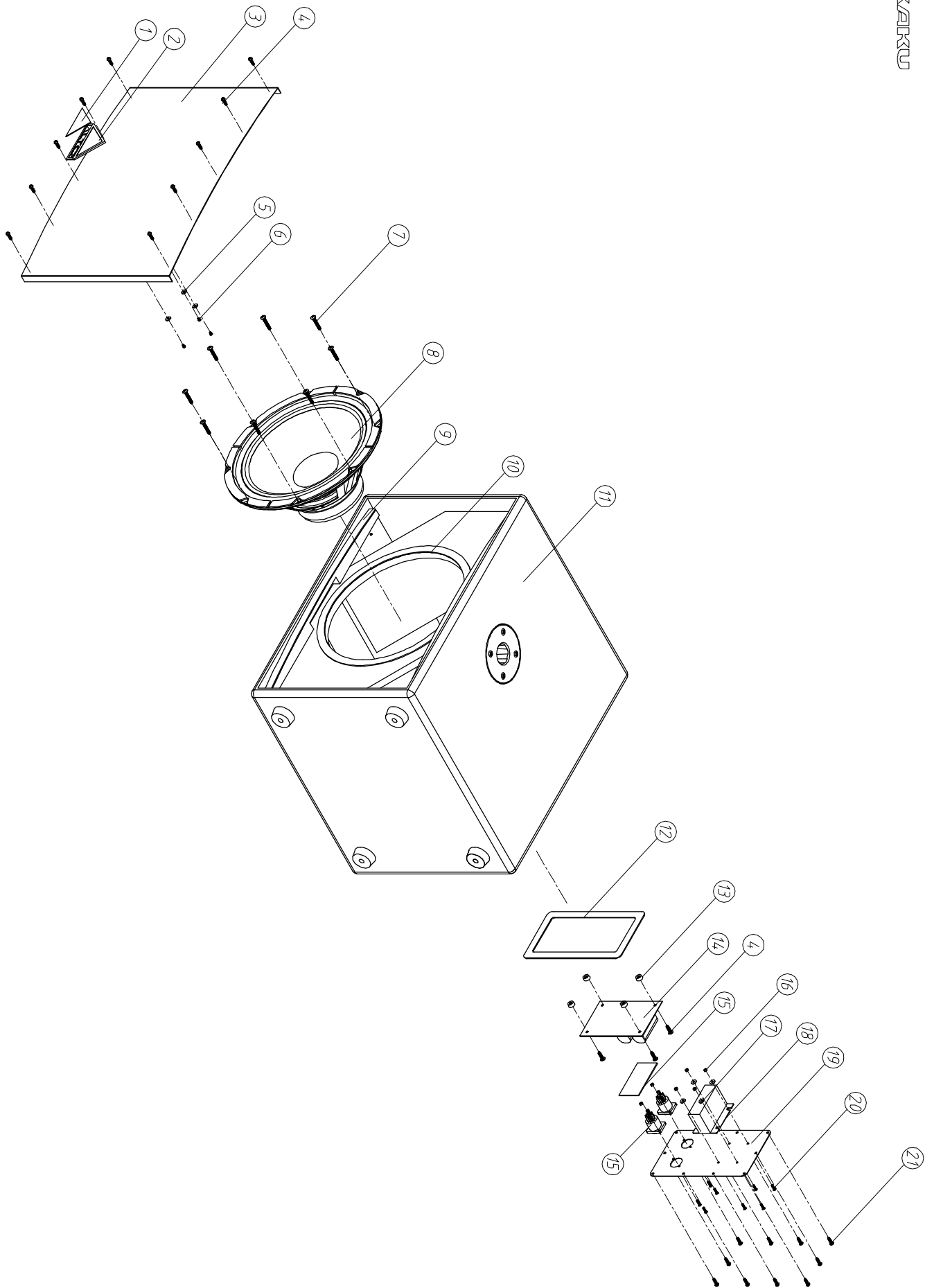
SEIKAKU ELECTRON INDUSTRY CO., LTD.

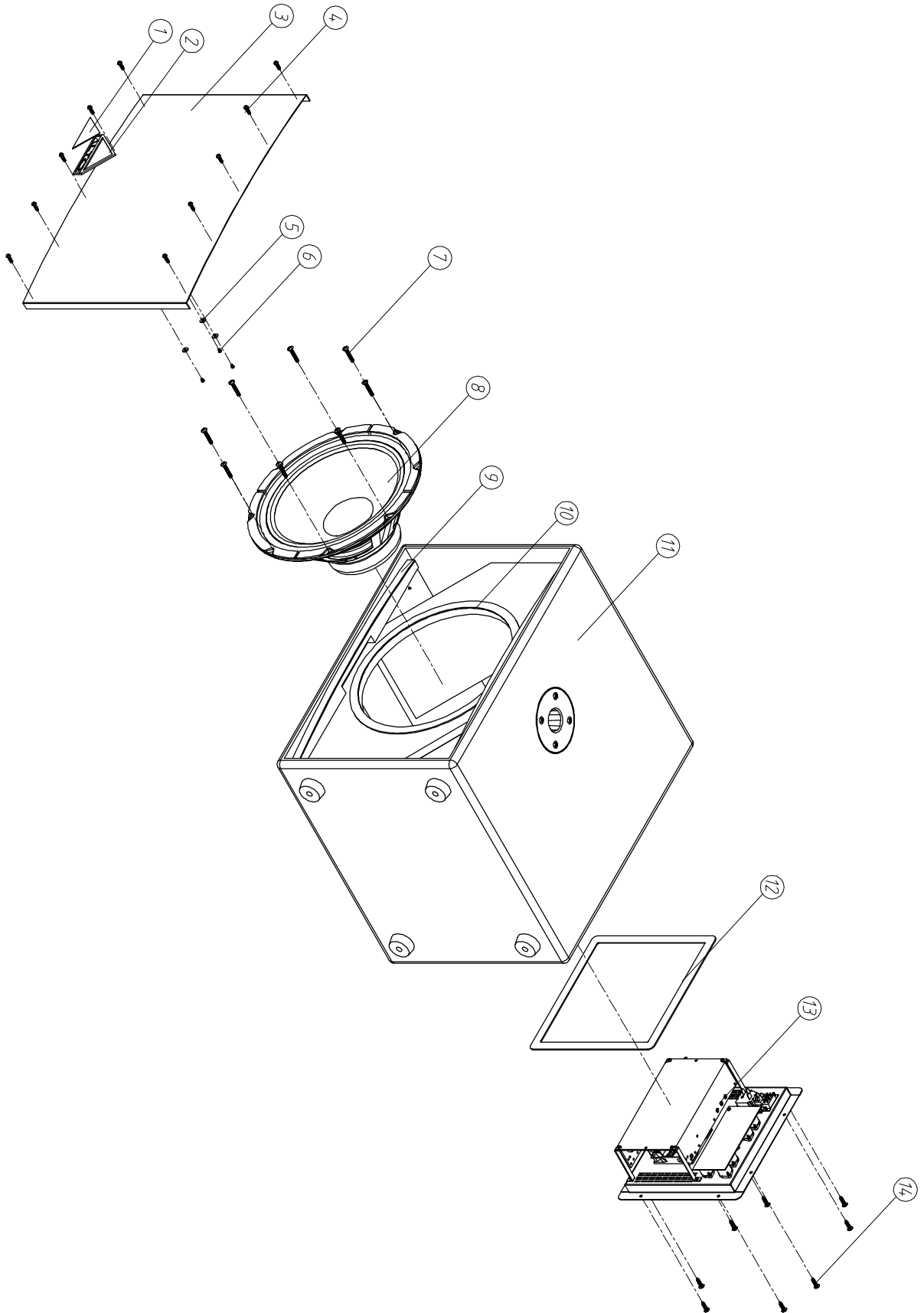
Test Result

Model No: _____ MS12SA _____ (Amplifier)		USER OF ATS-2			
Tester:		Test Date: 2009/02/10			
Test Item	Test Conditions	Spec	Test Result	Remark	
1	Power Source	AC	AC: 230V/50HZ	AC: 230V/50HZ	OK
2	Motionless State Current	All Load Break	<18W	W	VR MAX
3	Power Consumption	At Full Power	2.21A	A	VR MAX
			300W	W	
4	Rated Output	HI Load 8	//	//	VR MAX
		LOW Load 4	30V	V	
5	Signal/Noise		//	//	VR MAX
			85dB	dB	
6	Hum or Noise	HI	//	dBu	VR MAX
		LOW	-55dBu		
7	Distortion	HI Load 8	0.1%	%	VR MAX GND SW Down
		LOW Load 4	0.1%	%	
8	INPUT SENSITIVITY	Output at Full Power	-4 2dB	dB	VR MAX
9	PUNCTURE VOLTAGE	5mA 5Sec	1800V	V	
10	LINK OUT	LEFT/MONO IN PUT -4dBu	Link-L -4dBu	OUT-L -4dBu	VR MAX
		RIGHT IN PUT -4dBu	Link-R -4dBu	OUT-R -4dBu	
11	FREQUENCY RESPONSE	Input -12dB Load 8	LOW	Hz	VR MAX

6 EXPLODED VIEW

SEIKAIKU





PARTS LIST

