

Service Manual

Model: MAXIDRIVE3.4

3-WAY STEREO DIGITAL CROSSOVER



www.altoproaudio.com

Version: 1.1

CONTENTS

1. Specification.....	2
2. Block Diagram.....	1
3. Schematic Diagram.....,	9
4. Printed Circuit Board.....	8
5. Wiring Diagram.....	1
6. Test Procedure.....	0
7. Electrical Parts List.....	18
8. Exploded Views & Mechanical Parts List.....	1
9. Troubleshooting.....	0
10. Notes.....	0

1. Specifications

General specifications:

INPUT section

Connectors	2 x COMBO
Nominal input sensitivity	0dB(0.775v)
Input Impedance	30KOhm
Max.Input level	+ 20dBu
Input Gain	-30/+ 6 dB step 0.5dB
Digital input	AES/EBU, XLR-F
Digital input sample rate	32kHz/48kHz

Output section

Connectors	6 x XLR-M
Output Impedance	600Ohm
Nominal Output level	0dBu
Maximum Output level	+ 20dBu
Output Gain	-30/+ 6dB step 0.5dB

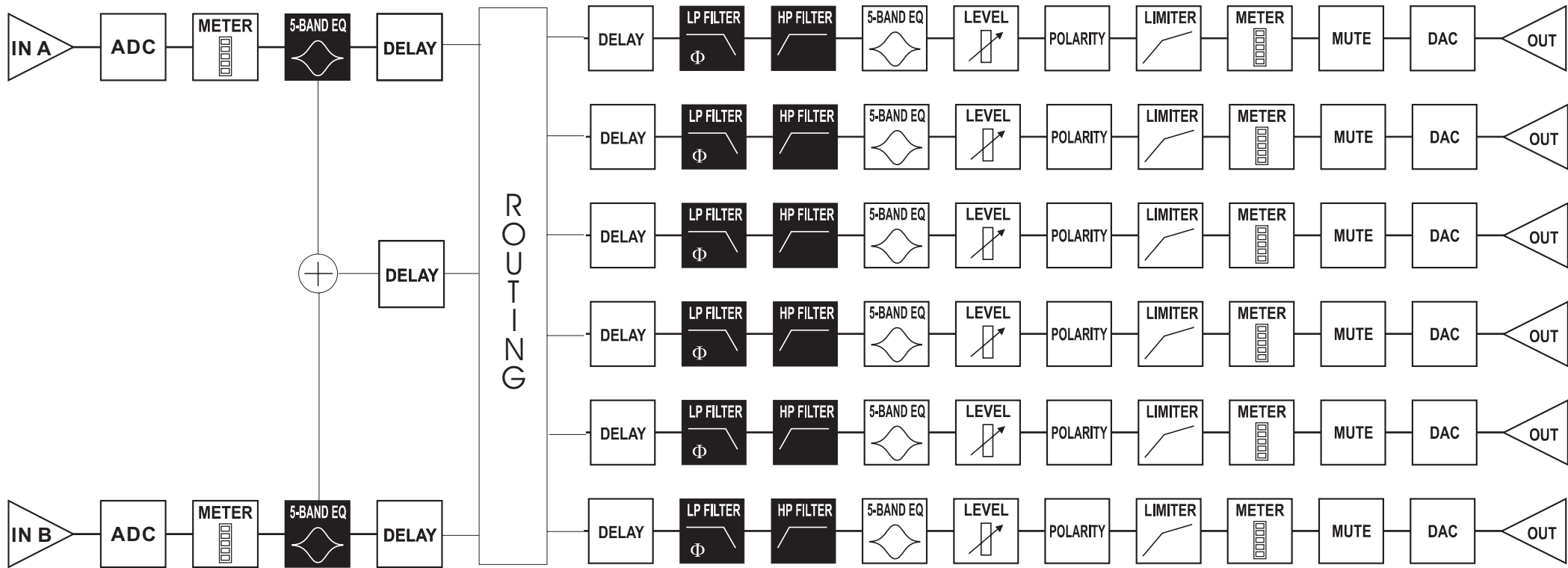
DSP Section

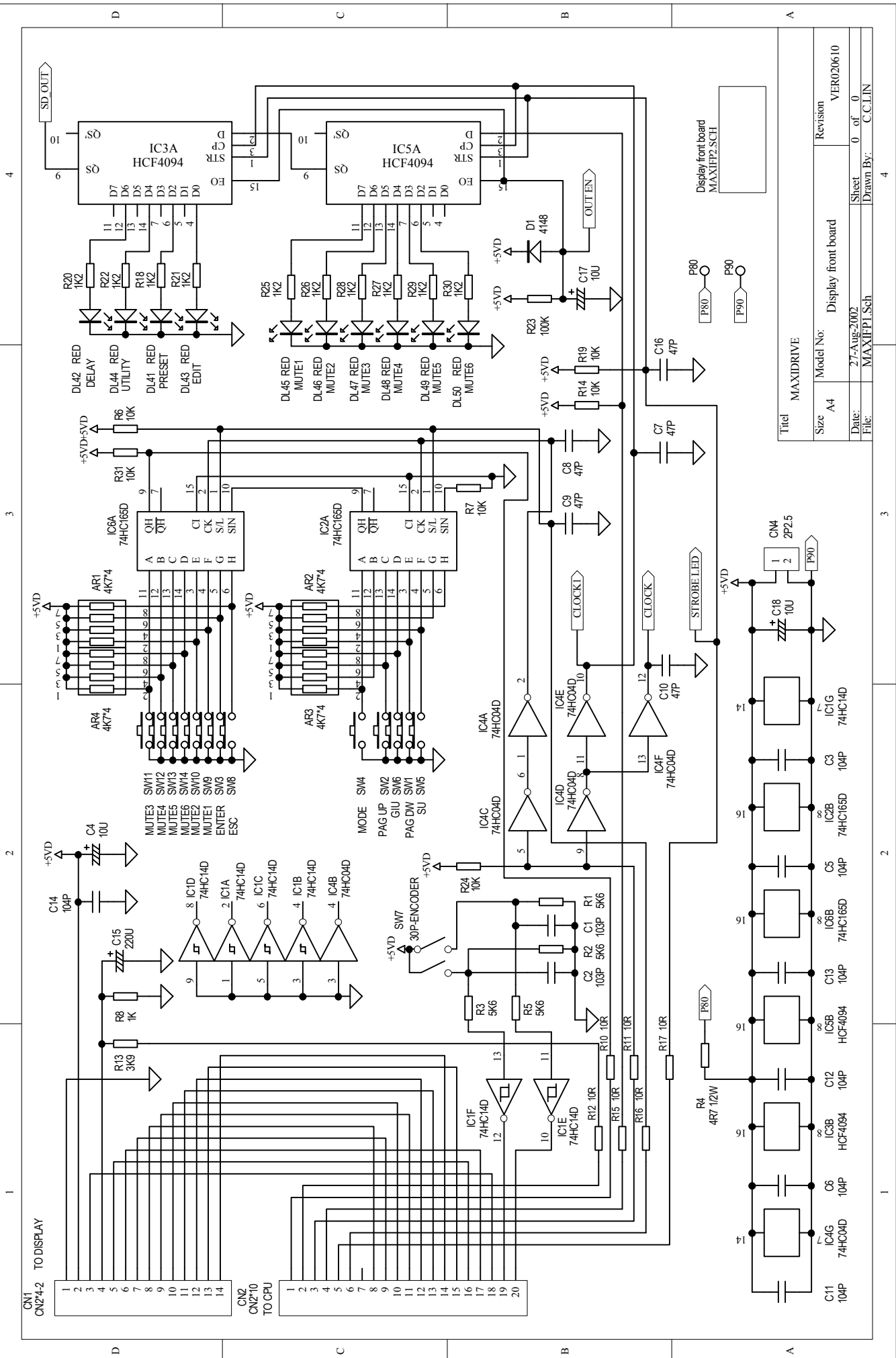
A/D converters	20bit
D/A converters	20bit
Internal dynamics	40bit
Sampling frequency	48kHz

Features

Configuration	2-WAY STEREO, 3-WAY STEREO, 2,3,4,5,6-WAY MONO
Crossover Filters Type	Bessel , Butter worth or Linkwitz-Riley
Crossover Filters Slope	6, 12, 18, 24, or 48dB per octave
Delay Step	21 microseconds minimum
Max Delay time	2621 ms (inputs), 291 ms(output)
EQ filters	Up to 40 maximum (depending on the crossover slope)
EQ Type	Peak, 6dB Lo-Shelf, 12dB Lo-Shelf, 6dB Hi-Shelf, 12dB Hi-Shelf, Notch +/-15dB, variable in 0.05 steps
EQ Gain	+/-15dB, variable in 0.5dB steps
EQ Bandwidth	0.05 to 3.00 octaves, variable in 0.05 steps
EQ freq	15.6Hz to 16kHz
Dynamics	Digital limiter on all the output
Memories	FACTORY PRESETS are 10+ 128 USER PRESETS + 128 CARD PRESETS

Communications	9-pin RS232, XLR-F RS485 IN, XLR-M RS485 OUT
General Performance(with filters out)	
Frequency Response	20Hz-20KHz, 0.25dB
Dynamic range	> 117dB 20Hz to 20KHz > 120dB 20Hz to 20KHz on AES/EBU input
Channel Separation	> 100dB 20Hz to 20KHz
Distortion(THD)	0.05%, 20Hz to 20KHz
Input Meter	-24dB, -18dB, -12dB, -6dB, CLIP relative to Clip point(+ 20dBu)
Output Meter	-24dB, -12dB, -6dB, LIMIT relative to limiter threshold setting, CLIP
General	
Dimensions	483 x 44 x 300mm
Weight	4.0kg





Titel		MAXIDRIVE	
Size	A4	Model No:	Display front board
Date:	27-Aug-2002	Revision	VER020610
File:	MAXIPI1.Sch	Sheet	0 of 0
		Drawn By:	C.CLIN

4

3

2

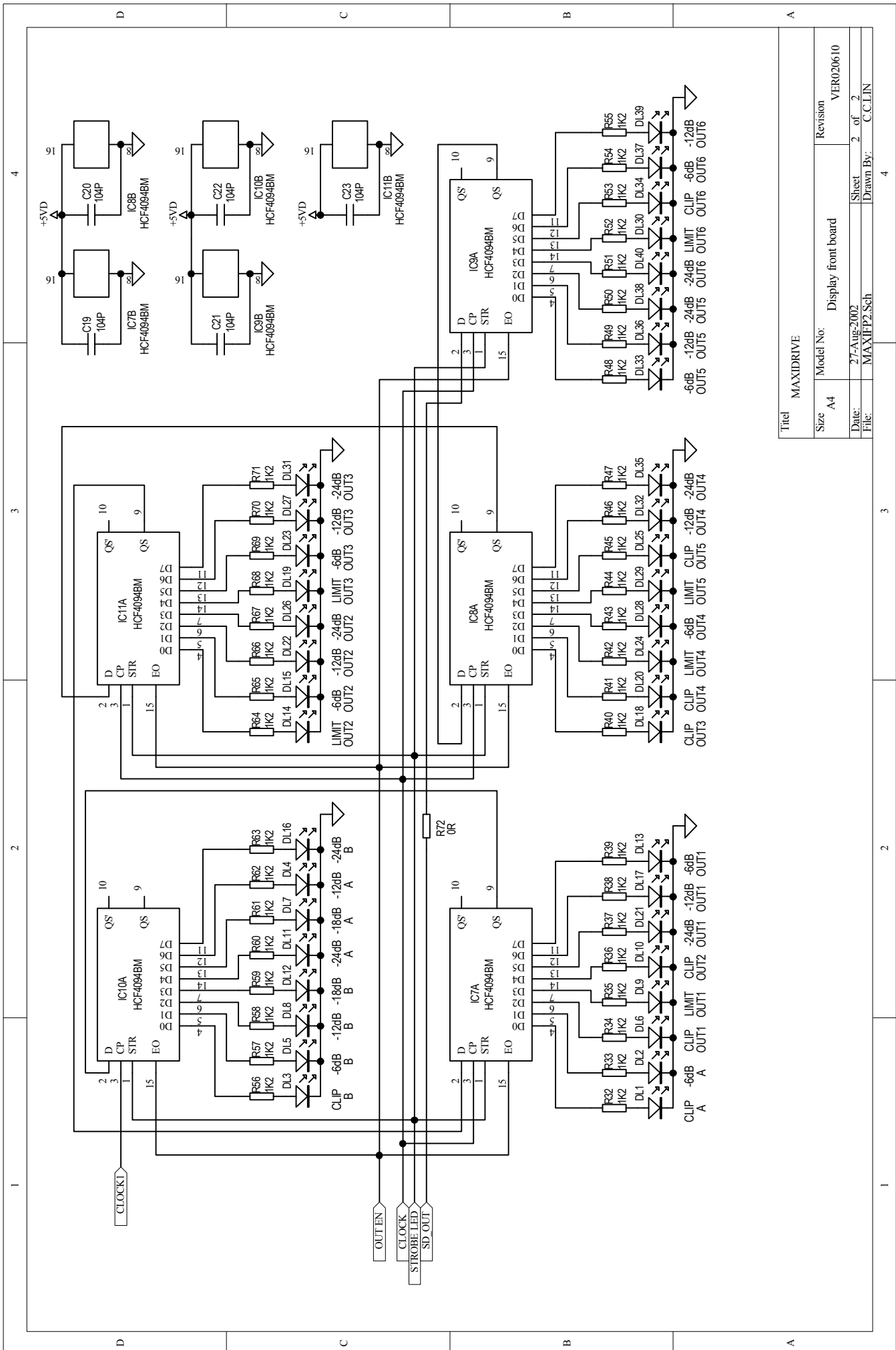
1

4

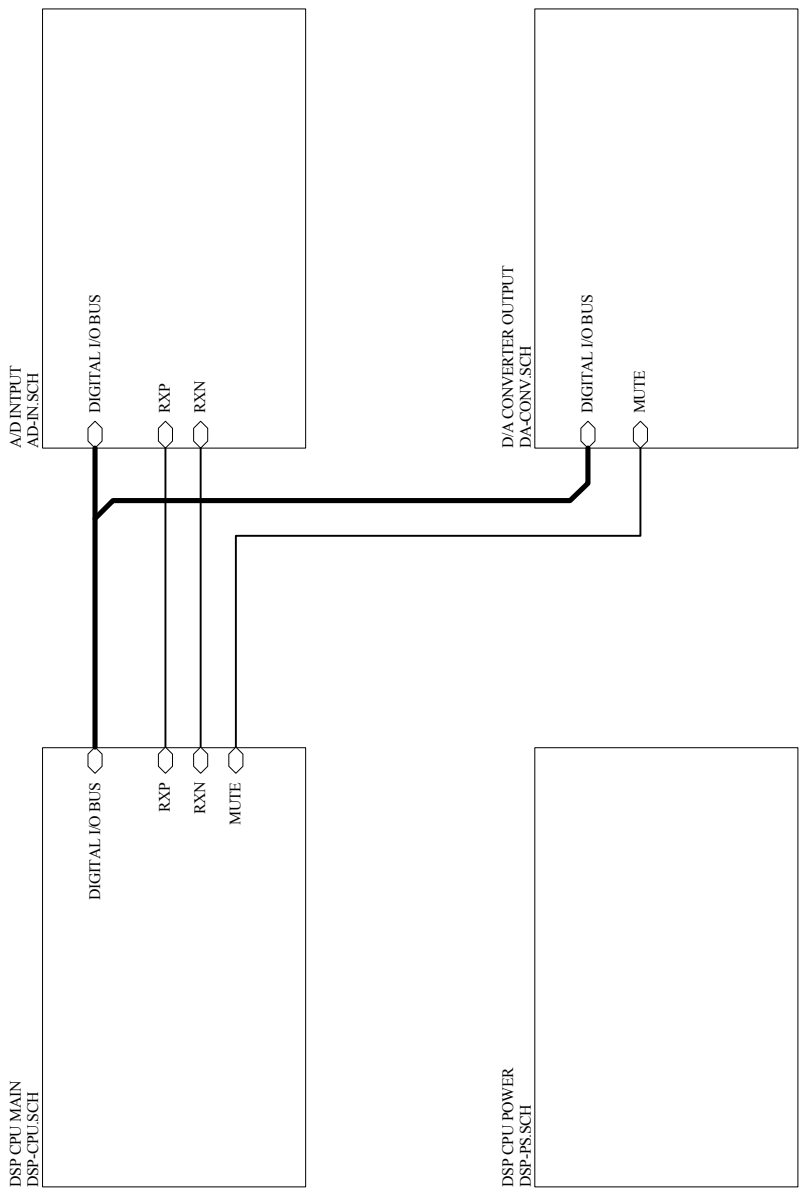
3

2

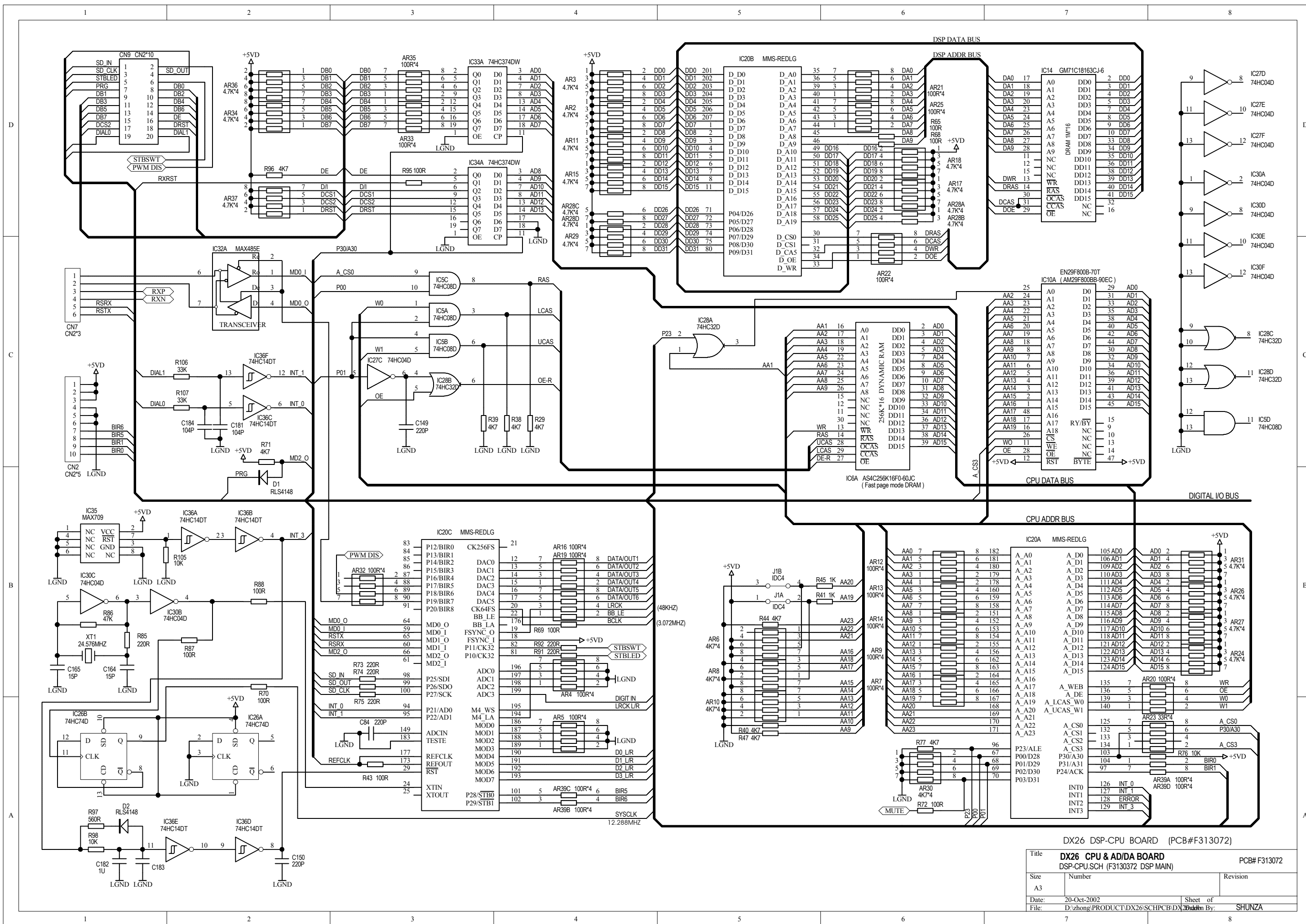
1



Titel		MAXIDRIVE	
Size	A4	Model No:	Display front board
Date:	27-Aug-2002	Revision	VER020610
File:	MAXIHP2.Sch	Sheet	2 of 2
		Drawn By:	C.C.LIN



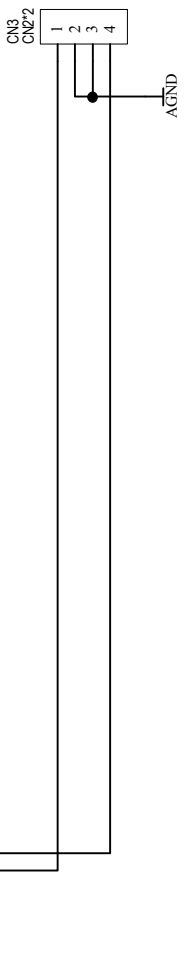
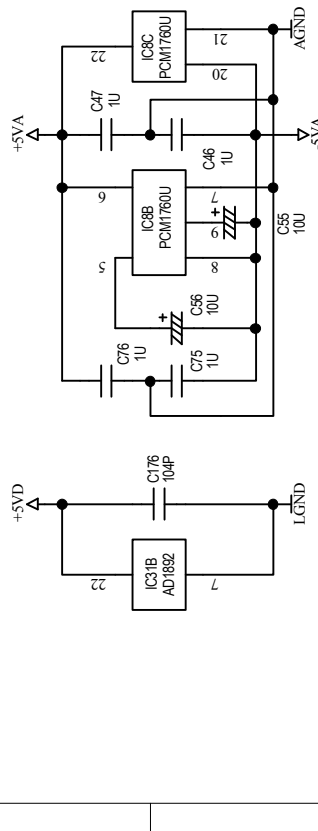
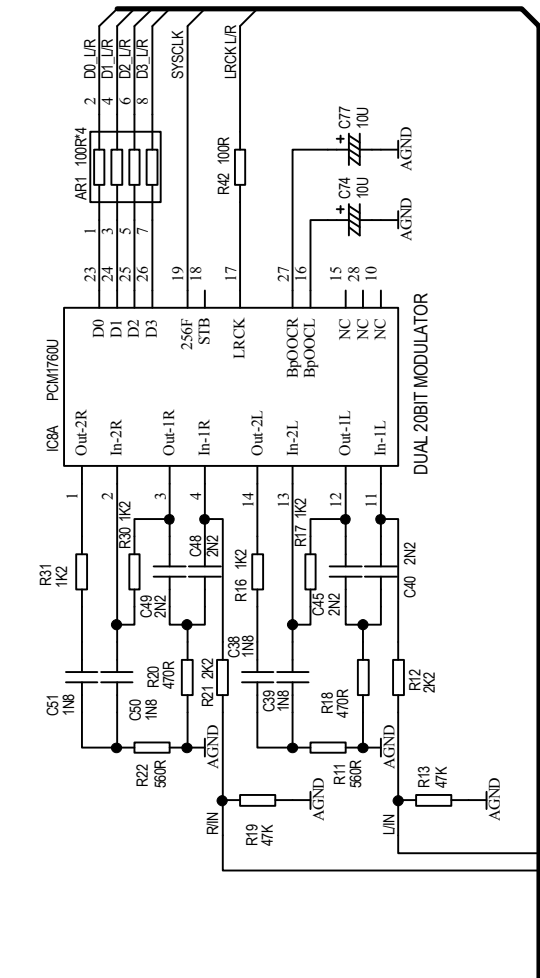
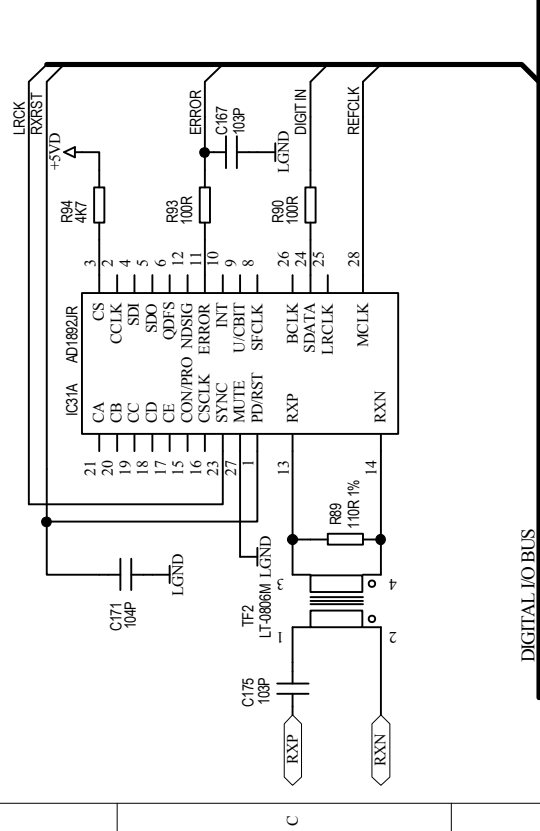
Title		DX26 CPU & AD/DA BOARD		PCB# F313072	
Size		F313072.PRJ (F3130372 MAIN PROJECT)		Revision	
A4					
Date:	20-Oct-2002	Sheet of		Sheet of	
File:	D:\zhong\PRODUCT\DX26\SCH\PCB\DX26.Dwg	Drawn By:	SHUNZA		



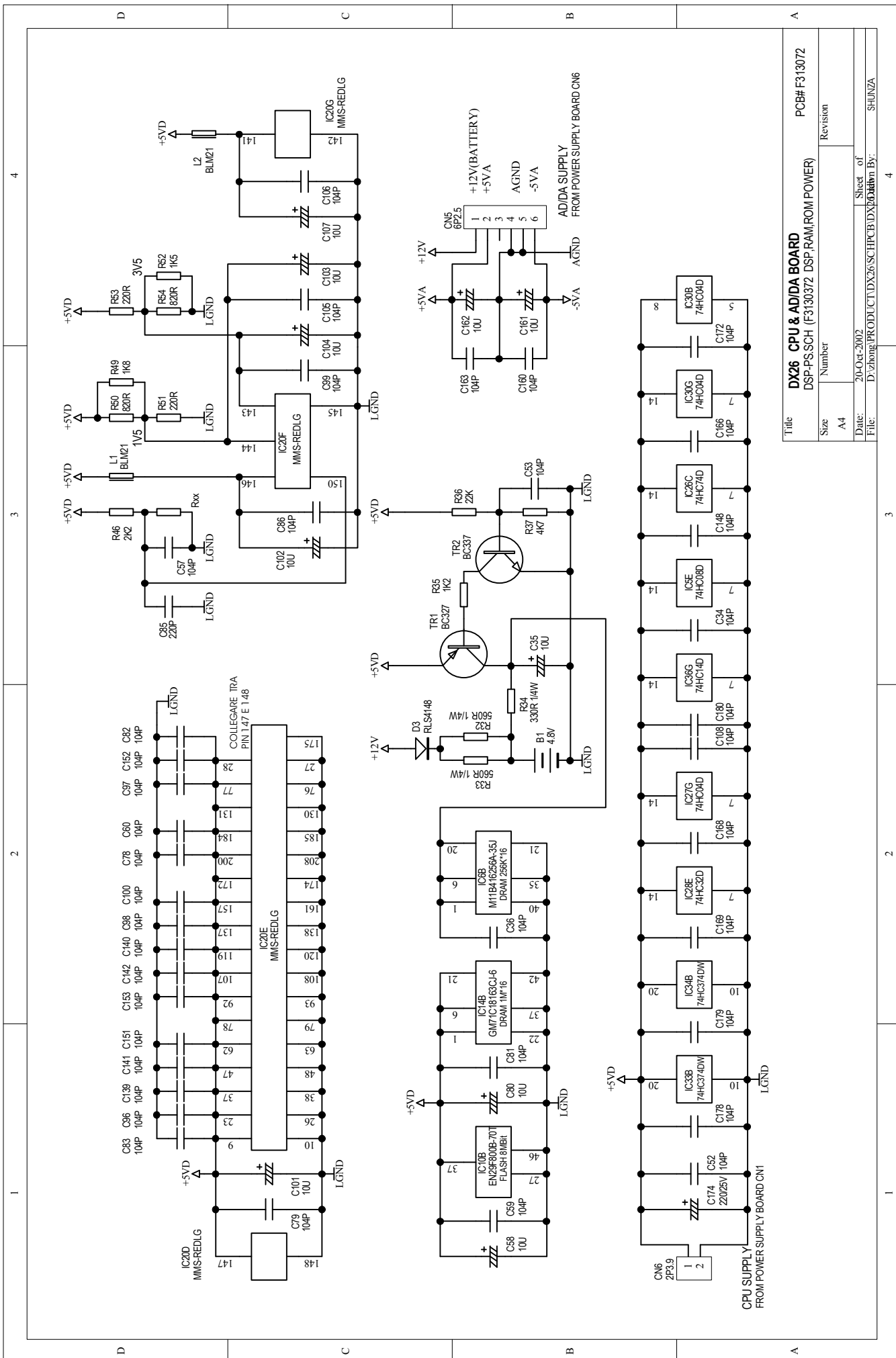
DX26 DSP-CPU BOARD (PCB#F313072)

Title		DX26 CPU & AD/DA BOARD		PCB# F313072	
Number		DSP-CPU.SCH (F313072 DSP MAIN)		Revision	
Size	A3	Date:	20-Oct-2002	Sheet of	1
File:		D:\zhong\PRODUCT\DX26\SCHPCB\DX26.DAT		Drawn By: SHUNZA	

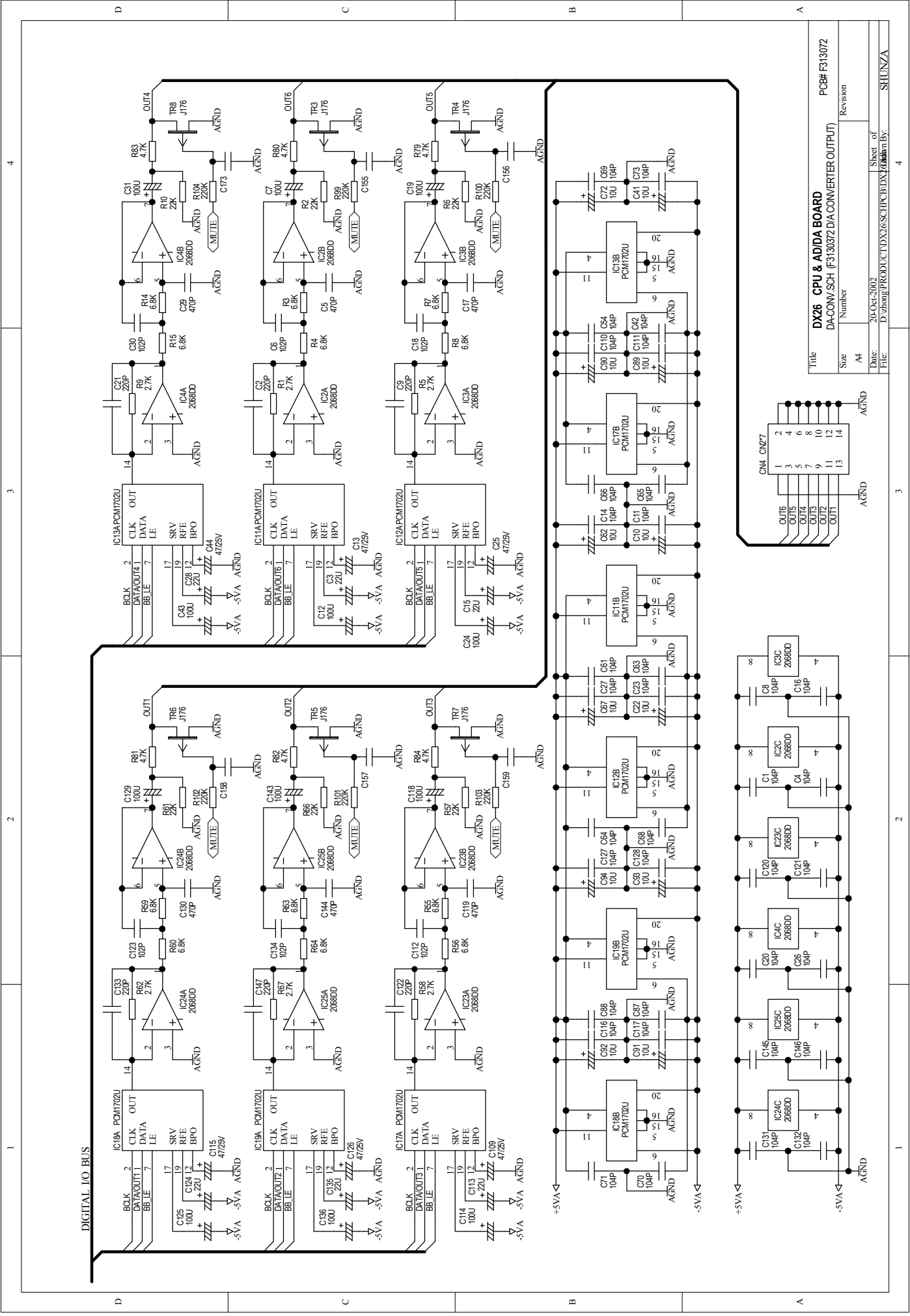
D C B A



Title		DX26 CPU & AD/DA BOARD		PCB# F313072	
Size	Number	Revision			
A4					
Date:	20-Oct-2002	Sheet of			
File:	D:\zhong\PRODUCT\DX26\SCH\PCB\DX26.dwg	Drawn By:	SHUNZA		



Title		Revision	
DX26 CPU & AD/DA BOARD		PCB# F313072	
DSP-PS-SCH (F3130372 DSP-RAM/ROM POWER)			
Size	Number	Sheet of	Revision
A4		20	
Date:	File:		
20-Oct-2002	D:\zhong\PRODUCT\DX26\SCH\PCB\DX26.DSN		SHUNZA

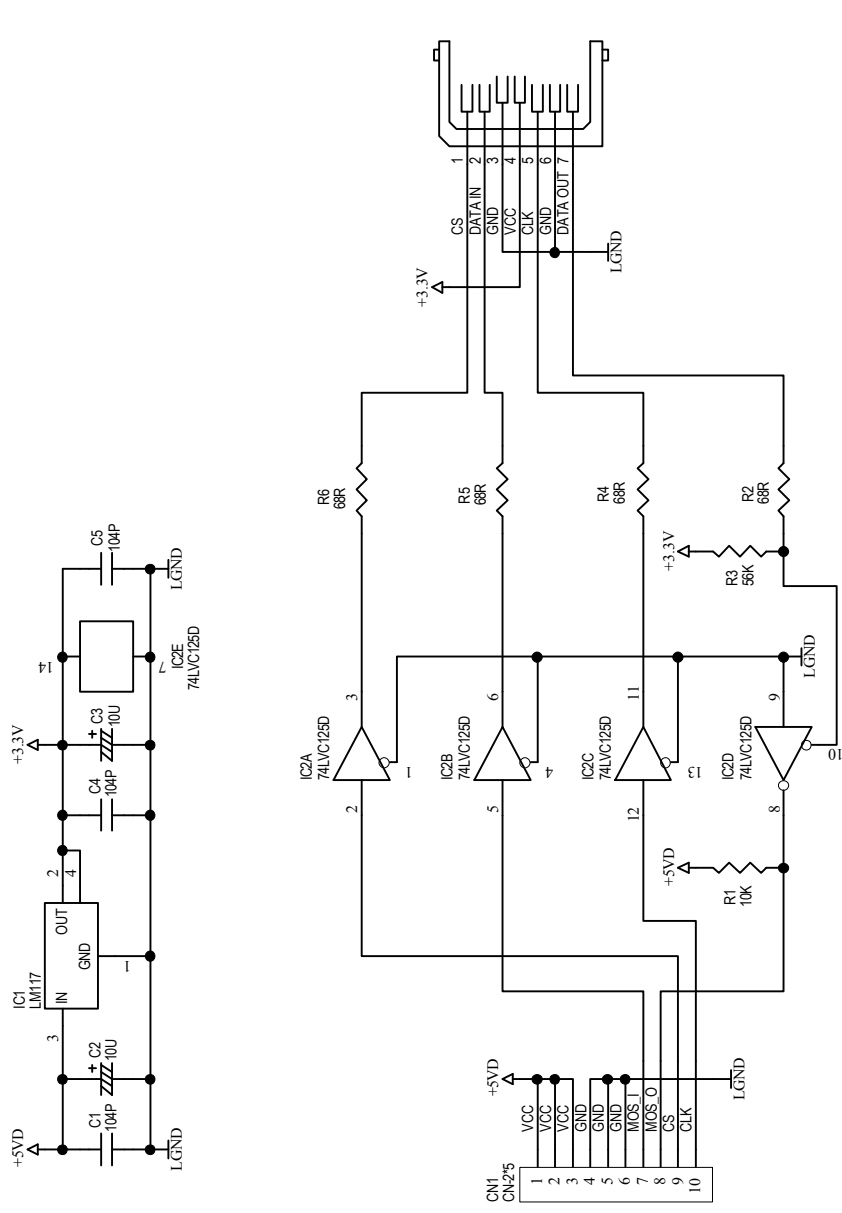


DIGITAL I/O BUS

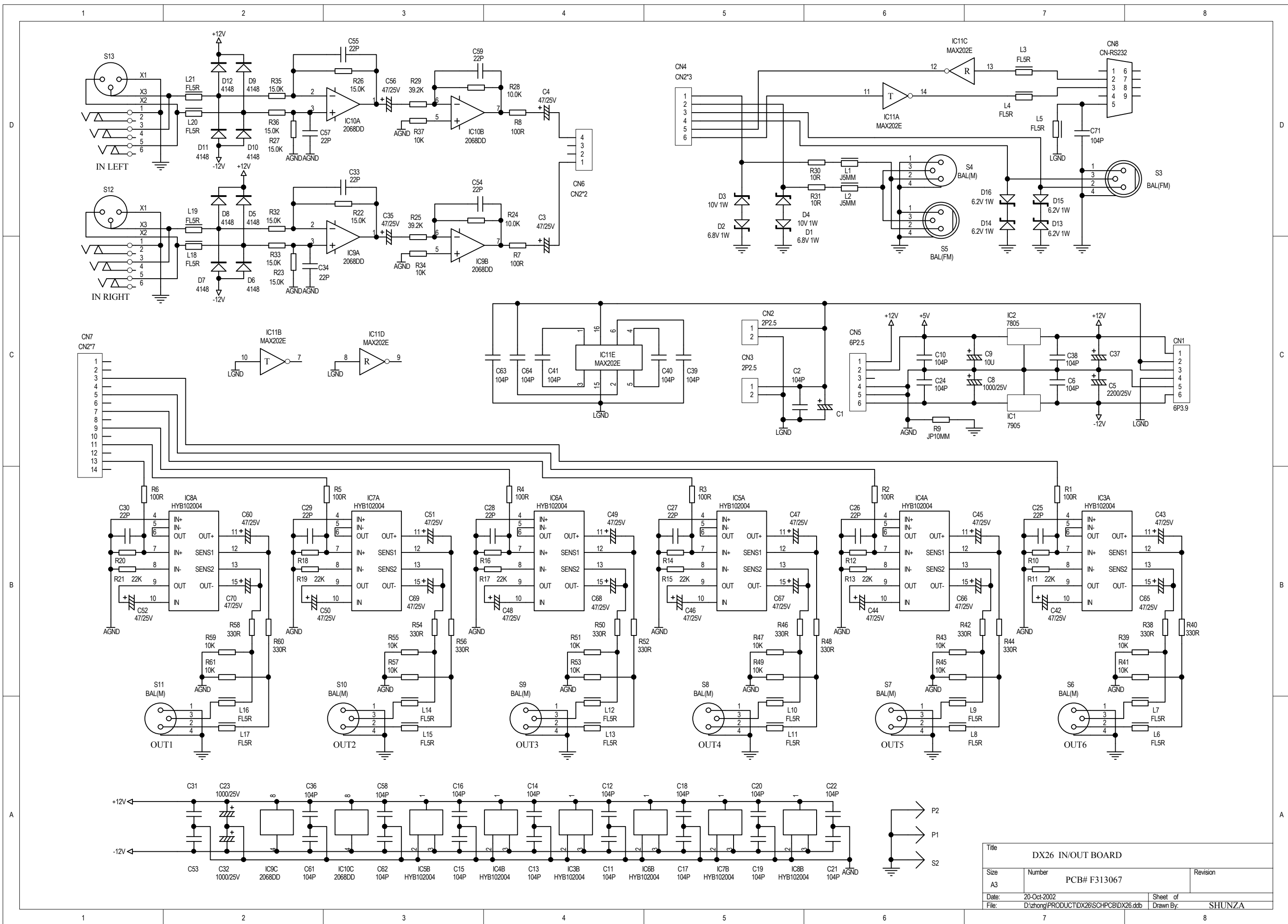
Title		DX26 CPU & AD/DA BOARD		PCB# F313072	
Size		A4		Revision	
Date:		20-Oct-2002		Sheet of	
File:		D:\zhong\PROD\ICT\DX26\SCH\PCB\DX26.dwg		SHUNZA	

1 2 3 4

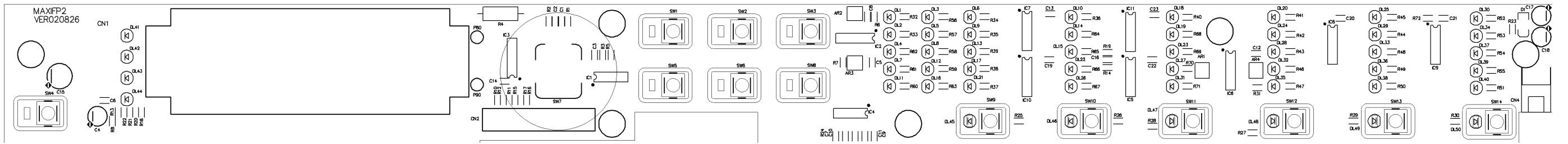
D C B A



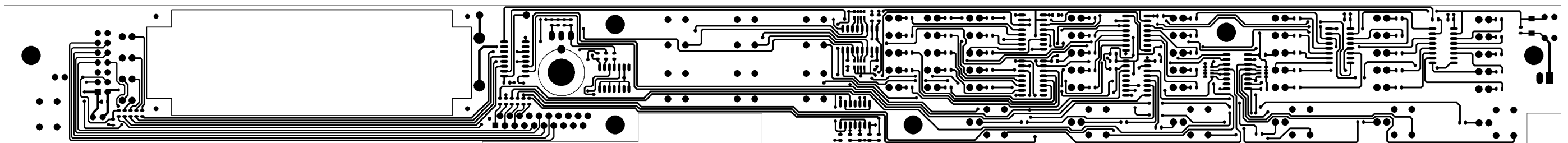
Title		PCB# F313085	
Size	Number	Revision	
A4			
Date:	20-Oct-2002	Sheet of	
File:	D:\zhong\PRODUCT\DX26\SCH\PCB\DX26.dwg	Drawn By:	SHUNZA



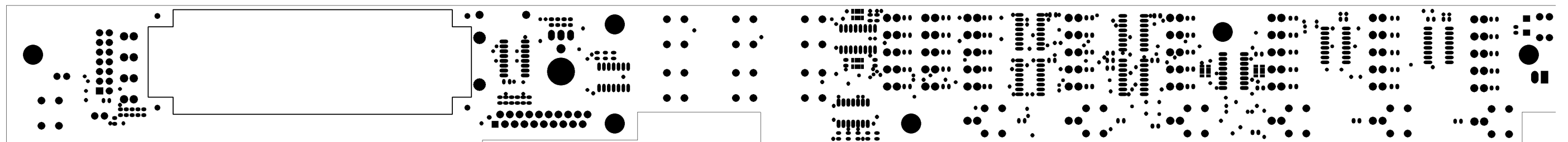
Title			DX26 IN/OUT BOARD		
Size	Number	PCB# F313067		Revision	
A3					
Date:	20-Oct-2002	Sheet of			
File:	D:\zhong\PRODUCT\DX26SCHPCB\DX26.ddb	Drawn By:		SHUNZA	



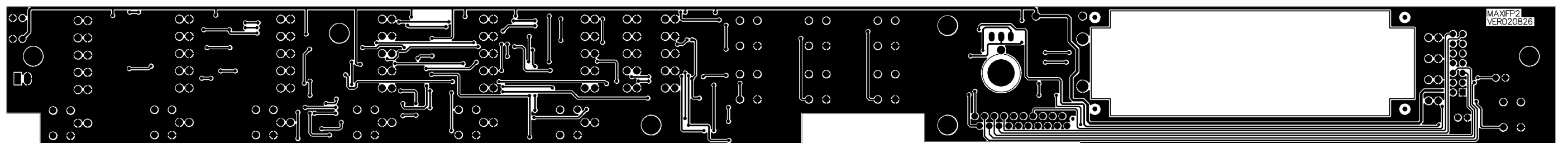
MAXIFP2 Top Silkscreen



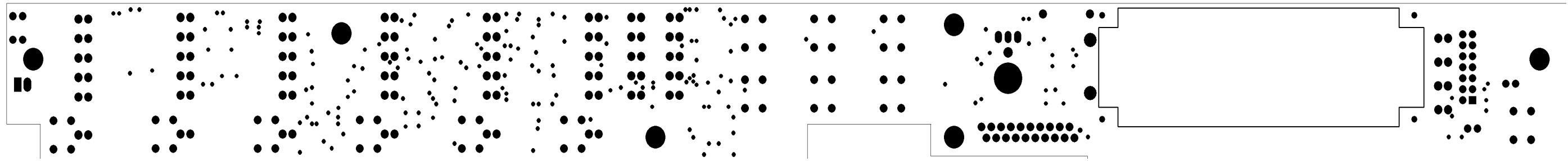
MAXIFP2 Top Layer



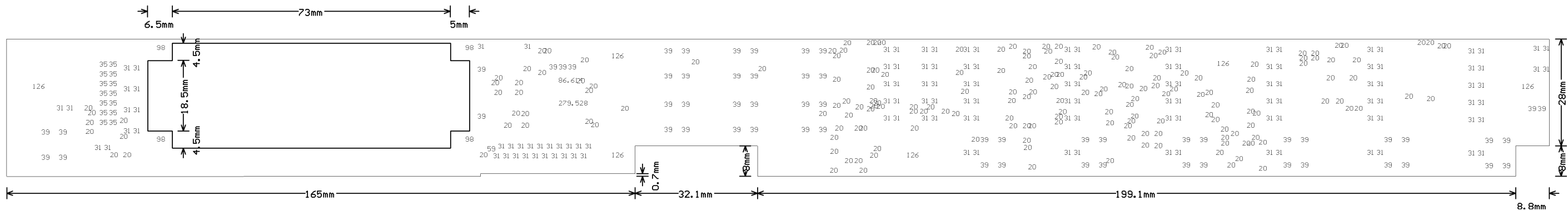
MAXIFP2 Top Solder Mask



MAXIFP2 Bottom Layer

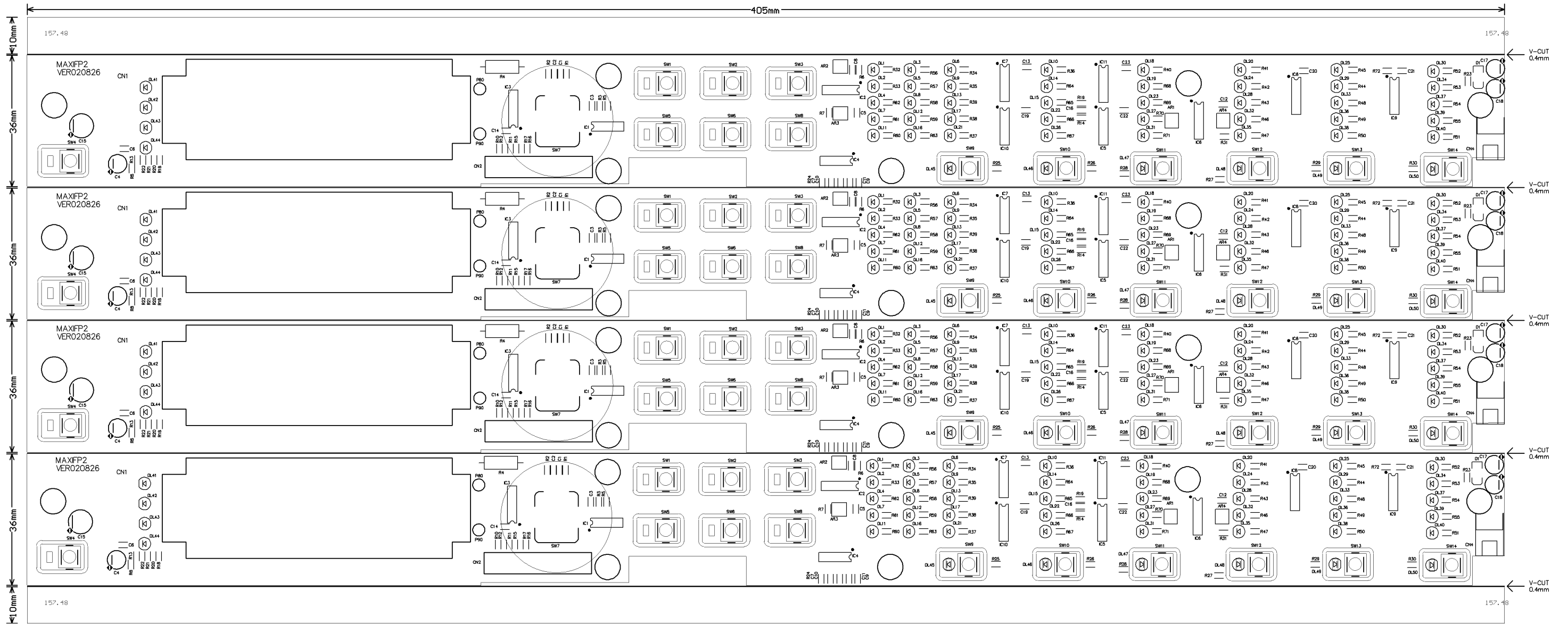


MAXIFP2 Bottom Solder Mask

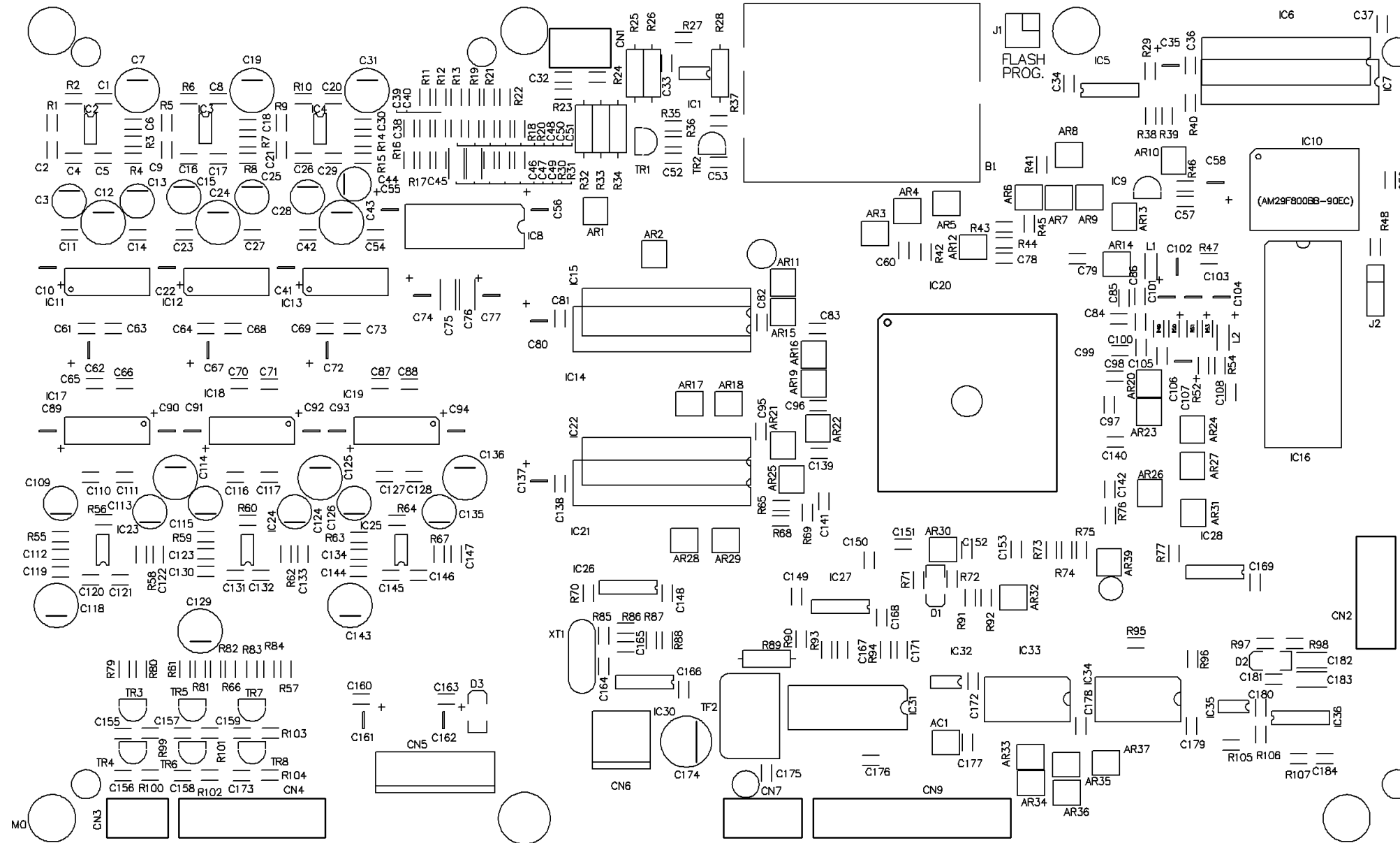


MAXIFP2 Drill Drawing

Tool	Hole Size	Hole Count Plated
T1	20mil (0.508mm)	184
T2	31mil (0.7874mm)	130
T3	35mil (0.889mm)	14
T4	39mil (0.9906mm)	59
T5	59mil (1.4986mm)	1
T6	87mil (2.2098mm)	1
T7	98mil (2.4892mm)	4
T8	126mil (3.2004mm)	6
T9	280mil (7.112mm)	1
Totals		400

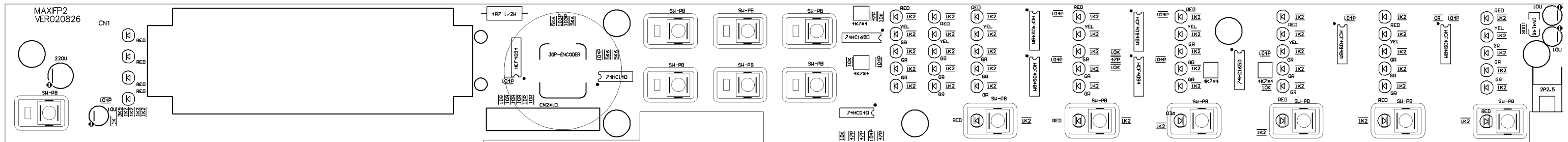
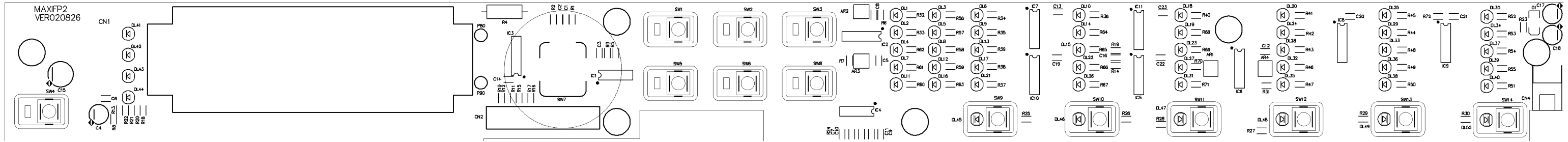


PCB:F313072

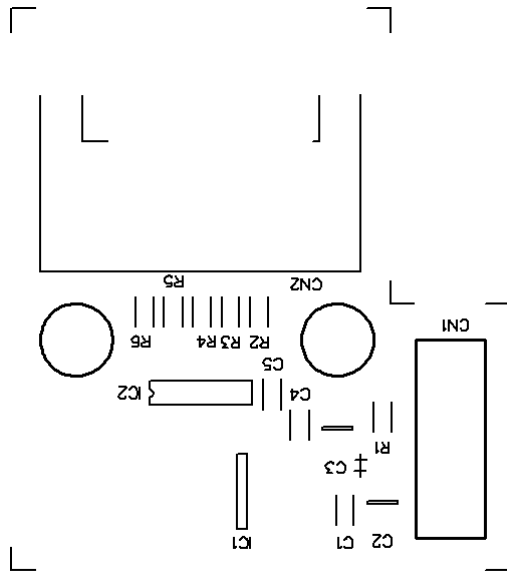


F313072 Top Silkscreen

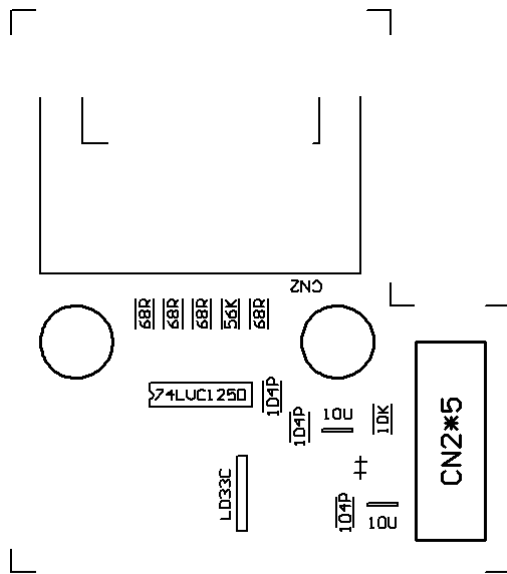
PCB:MAXIFP2



PCB:F313085



F313085 TOP SILKSCREEN



F313085 TOP SILKSCREEN

