

Service *Manual*

MODEL: OEX 600



www.altoproaudio.com

Version 1.0

CONTENT

| | |
|--|----|
| 1. Introduction..... | 2 |
| 2. Specification..... | 3 |
| 3. Block Diagram..... | 4 |
| 4. Schematic Diagram..... | 6 |
| 5. Wiring Diagram..... | 15 |
| 6. PCB Layout..... | 16 |
| 7. Test Procedure And Test Result..... | 26 |
| 8. Exploded Views & Mechanical Parts List..... | 31 |
| 9. BOM..... | 34 |

1. Introduction

Congratulations! Now you are the owner of the OEX600. The OEX600 is a plastic reinforced trolley that includes a versatile mixer with DSP effects, L&R full range speaker cabinets and sub-woofer. Besides, this package also includes some essential accessories such as power cord, signal cable, speaker cable, speaker stand and so on. In order to ensure high versatility and excellent audio performances, the OEX600 adopts optimal crossover frequency and advanced power amplifier technologies.

The sub-woofer is built-in into trolley. It contains a 12" low speaker, which delivers a natural and powerful sound and will bring you unprecedented low frequency emission from such a compact audio system.

FEATURES:

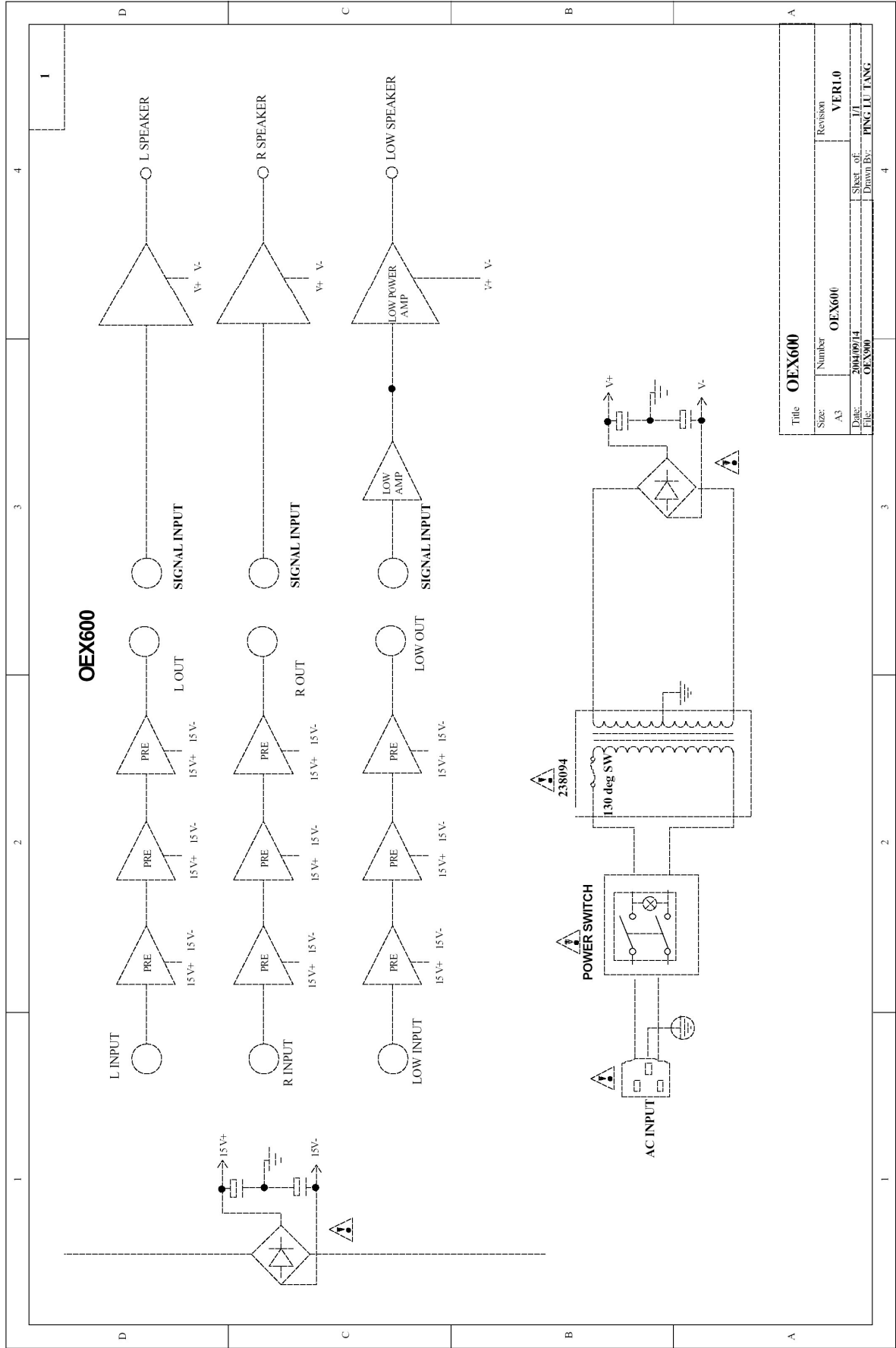
- Trolley appearance
- 2 (two-way satellite) + 1 (subwoofer) + 1 (6-channel mixer) super combination
- Three-way full-range speaker system with 12" subwoofer
- 5 XLR MIC input with ultra low noise microphone pre-amplifiers and +48V PHANTOM power
- 1 stereo LINE input
- Warm, natural 3-band EQ for each channel
- Precision level control
- 24-bit DSP effects with powerful algorithms (16 presets)
- Extremely high headroom offering excellent dynamic range
- Plastic reinforced cabinet (polypropylene)
- 600W Peak power, 300W RMS Power, three-Amp system -75W+75W for each satellite and 150W for subwoofer
- Two 7m speaker cables
- Two F8 folding speaker stands
- Compartment for store following accessories:

Accessory List:

| | |
|--------------------------|--------------------|
| Folding speaker stands | 2 × F8 |
| Power cord | 1 × IEC power cord |
| Signal cable | 1 × 2m |
| Customized Speaker Cable | 2 × 7m |

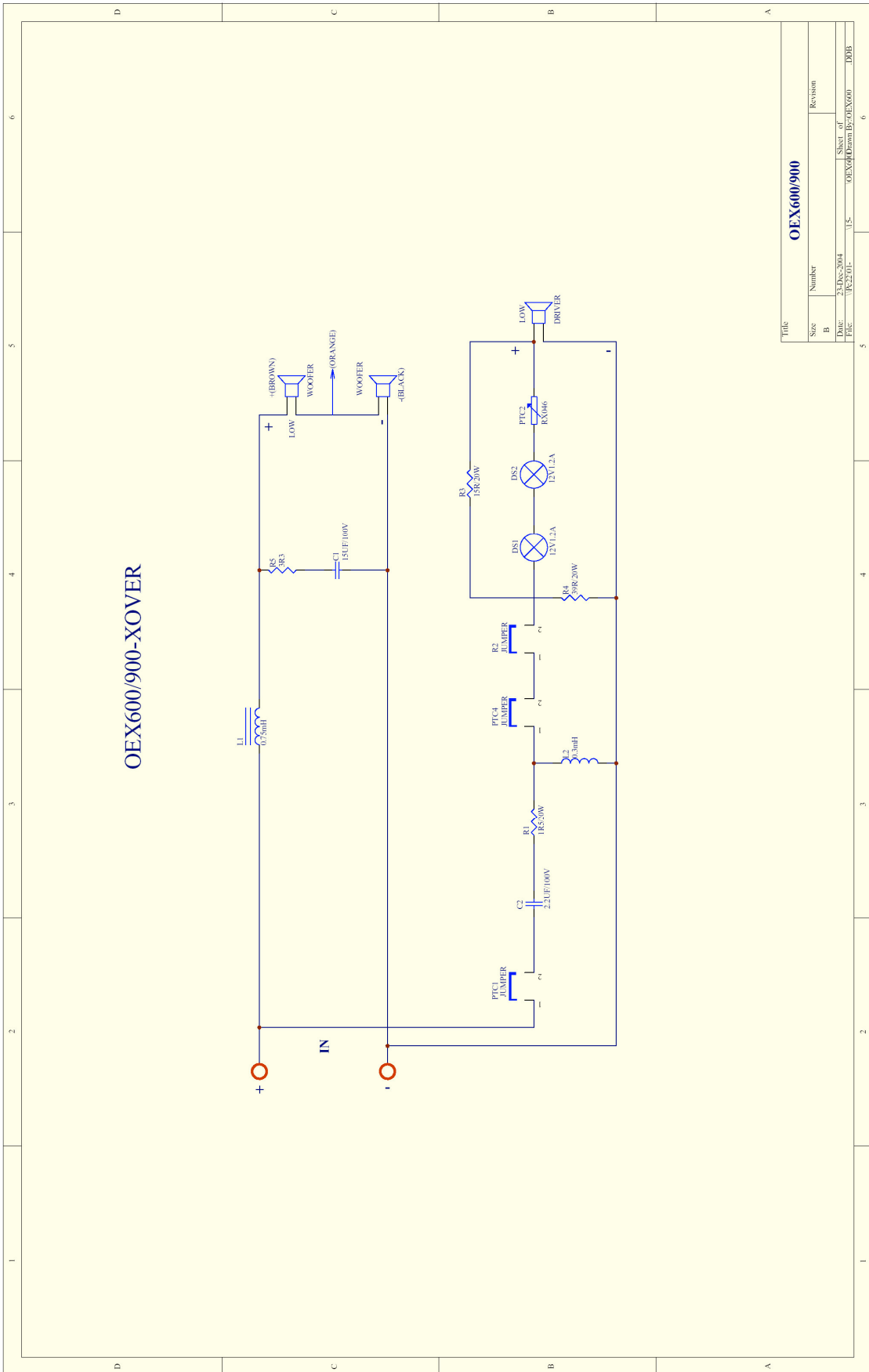
2. Specification

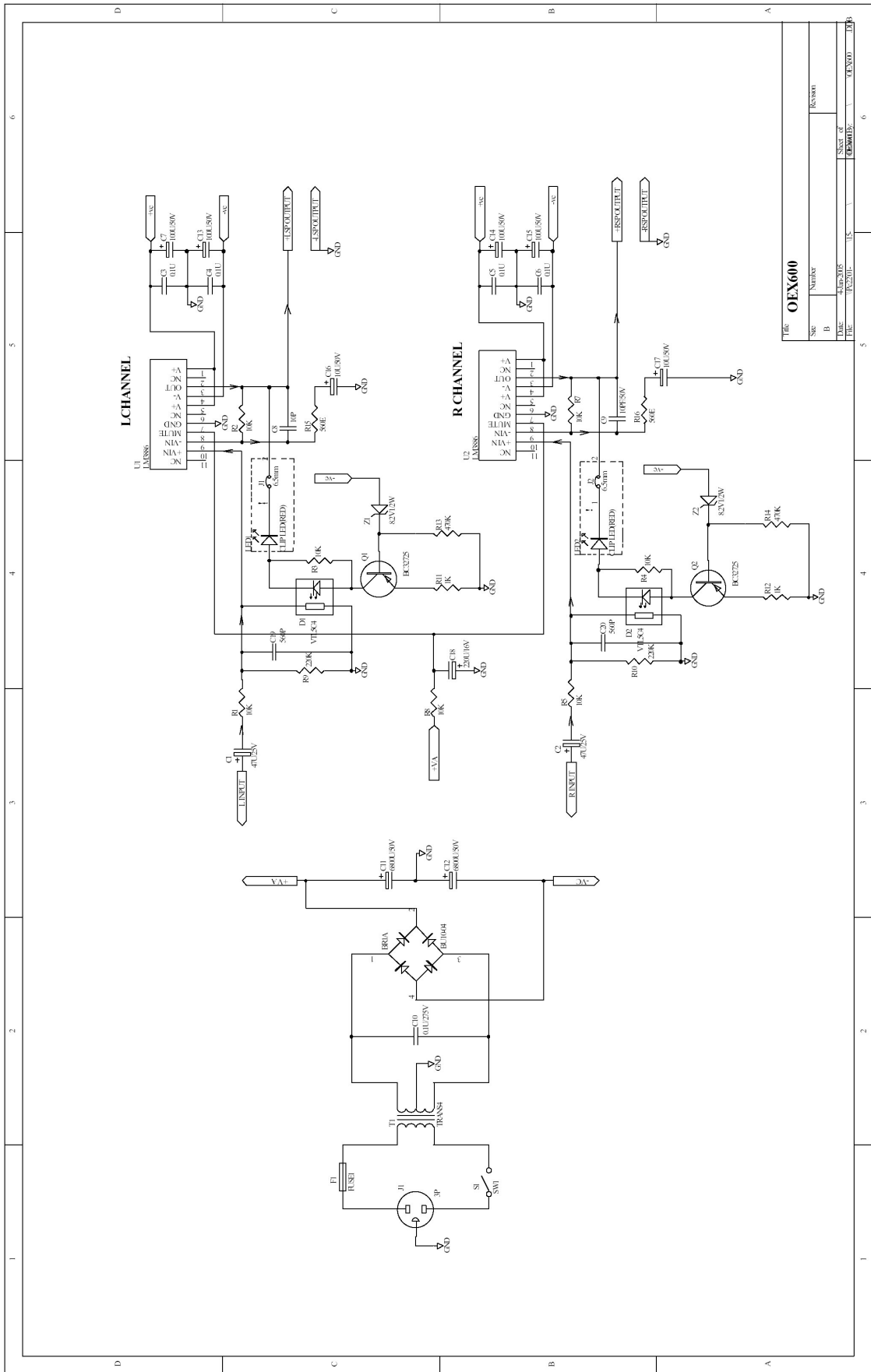
| | | |
|-----------------------|----------------------------|---|
| Mono input channels | Microphone Input | Electronically balanced, discrete input |
| | Frequency response | 10Hz to 55kHz, +/- 3dB |
| | Distortion(THD&N) | 0.04% at +4dBu, 1kHz |
| | Gain | 35dB |
| | SNR(Signal to Noise Ratio) | >94dB |
| | Line input | Electronically balanced |
| | Frequency response | 10Hz to 55kHz, +/- 3dB |
| | Distortion(THD&N) | 0.04% at +4dBu, 1kHz |
| | Gain | 15dB |
| Stereo input channels | Line input | Unbalanced |
| | Frequency response | 10Hz to 55kHz, +/- 3dB |
| | Distortion(THD&N) | 0.04% at +4dBu, 1kHz |
| Impedance | Microphone Input | 1.4kOhm |
| | Channel Insert return | 2.5kOhm |
| | All other inputs | 10kOhm or greater |
| | Tape out | 1kOhm |
| | All other outputs | 120Ohm |
| Equalization | Hi shelving | +/-15dB@12kHz |
| | Mid bell | +/-15dB@2.5kHz |
| | Low shelving | +/-15dB@80Hz |
| DSP Section | A/D and D/A converters | 24bit |
| | DSP resolution | 24bit |
| | Type of effects | REVERBS, Stereo DELAY, Chorus REV+DELAY, and REV+CHORUS combinations |
| | Presets | 16 |
| | Controls | 16-position PRESET selector CLIP LED MUTE SWITCH with LED indicator |
| Main Mix Section | Noise(Bus noise) | Fader 0 dB, channels muted:-85dBr (ref.:+4dBu) Fader 0 dB, all input channels assigned and set to UNITY gain:-81dBr(ref.:+4dBu) |
| | Max output | +27dBu balanced |
| | Controls | +22dBu unbalanced, 1/4" jacks |
| | AUX Sends max out | +22dBu |



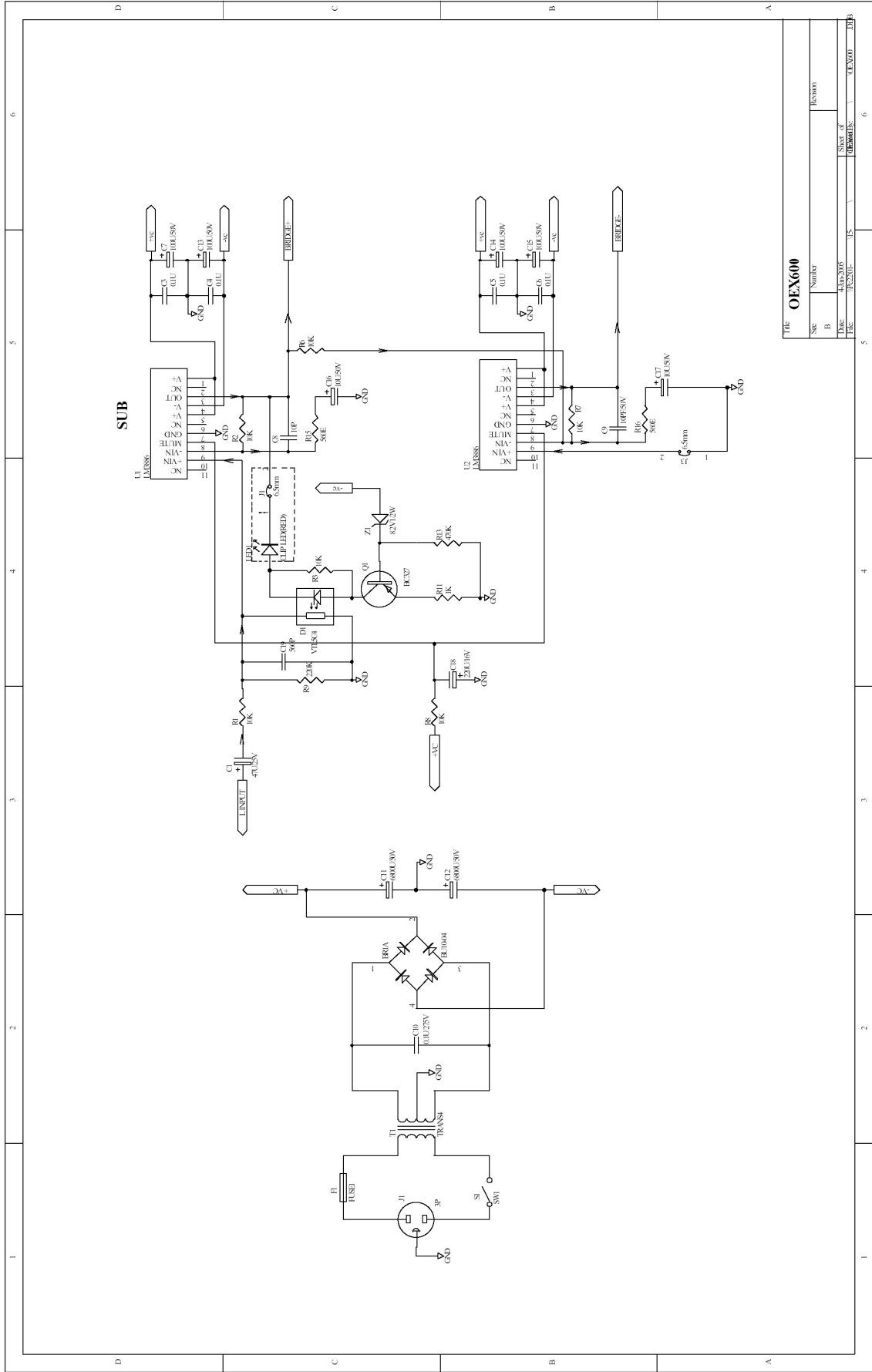
| | |
|---------------------|------------------------------|
| Title OEX600 | |
| Size: A3 | Number: OEX600 |
| Date: 2004/09/14 | Revision: VER1.0 |
| File: OEX600 | Drawn By: PNG LU TANG |

4. Schematic Diagram





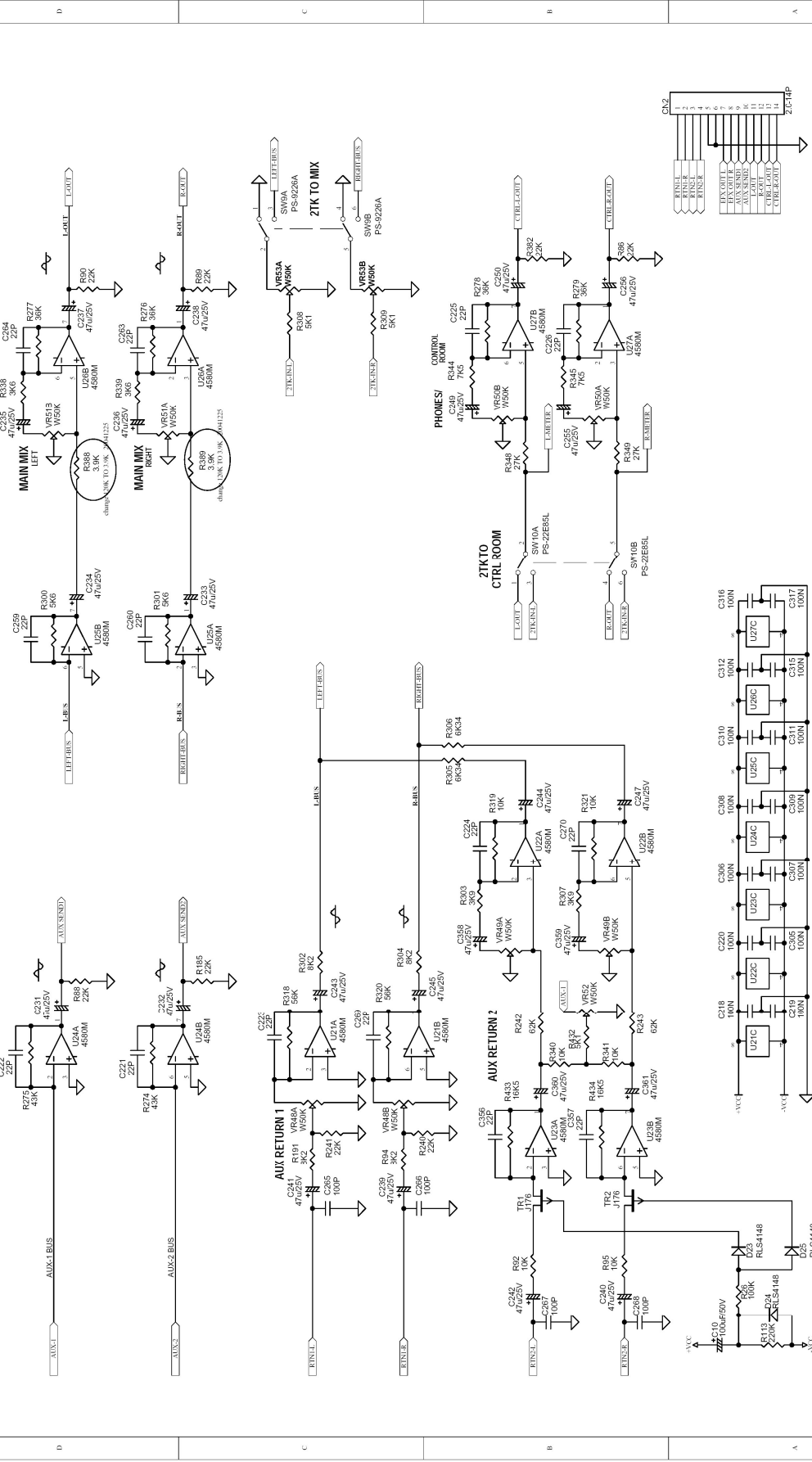
| | |
|------------|----------|
| THE OEX600 | |
| Spec | Number |
| B | REV001 |
| DATE | Sheet of |
| 1972-01-11 | 6 |
| FILE | DESIGN |
| | 0200 |



THE **OEX600**

| | | |
|------|----------|------------|
| Spc | Number | Revision |
| B | 10/02/05 | |
| Doc | TC2201- | Sheet of 6 |
| File | TC2201- | DEMOS.DWG |
| | | TC2201 |

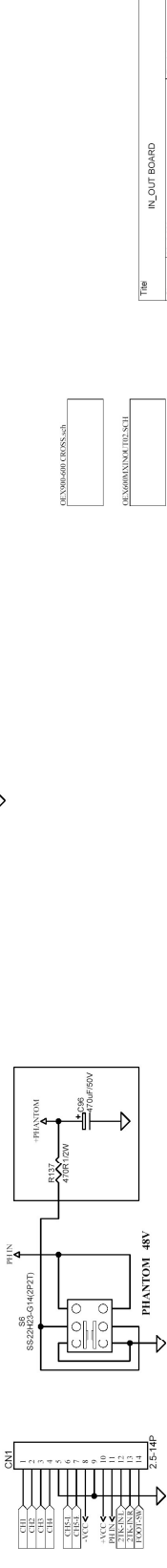
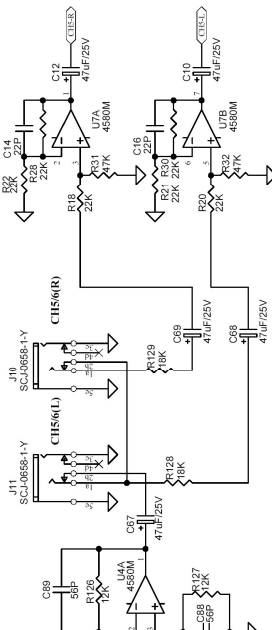
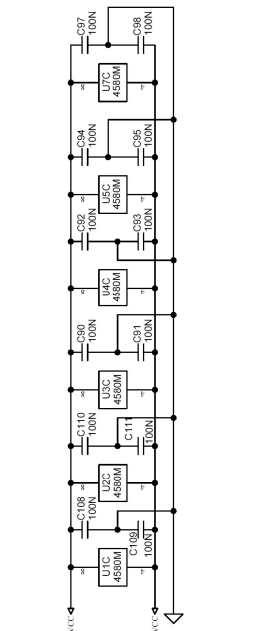
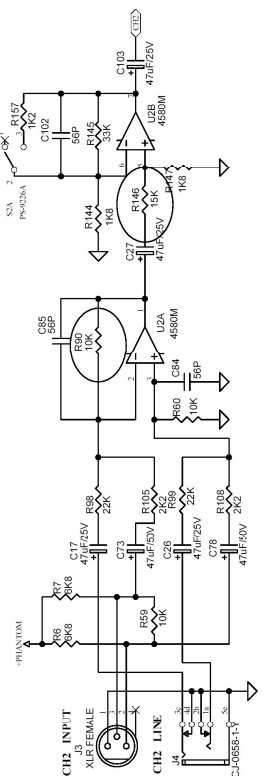
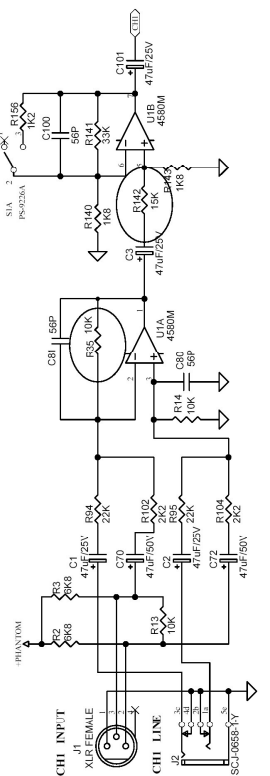
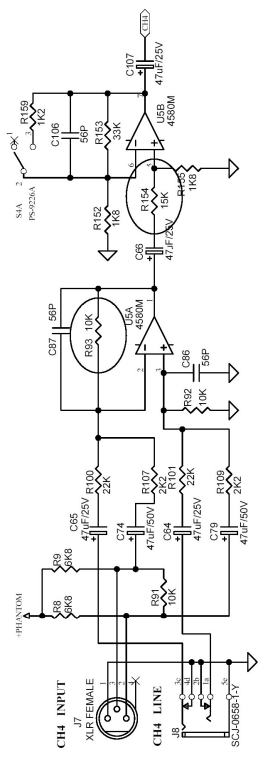
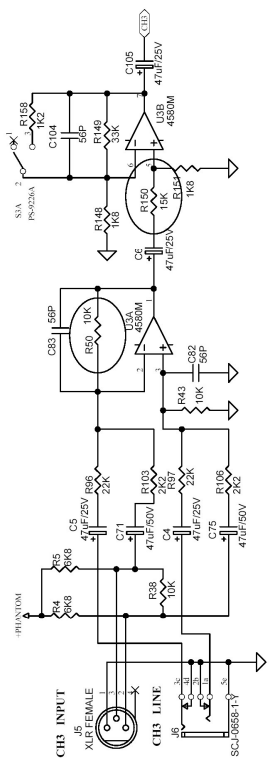
OEX600MX-CTRL (2/3)



| Size | Model No. | Revision |
|------|--------------------|-------------|
| A2 | OEX600MX | REV01 |
| File | 90-C53-20 | Sheet |
| Part | OEX600MX-CTRL02SCH | Drawn By |
| | | SHUJING LIN |

Title OEX600MX-CTRL

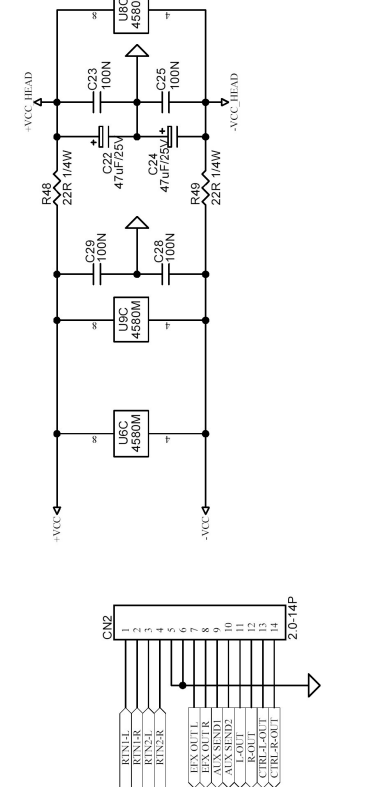
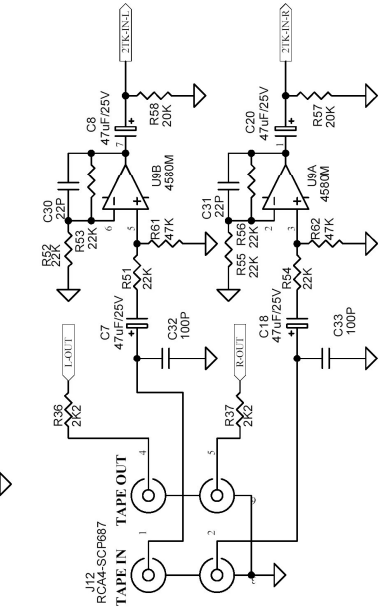
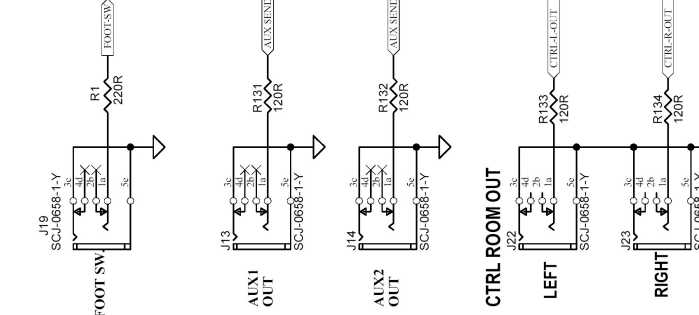
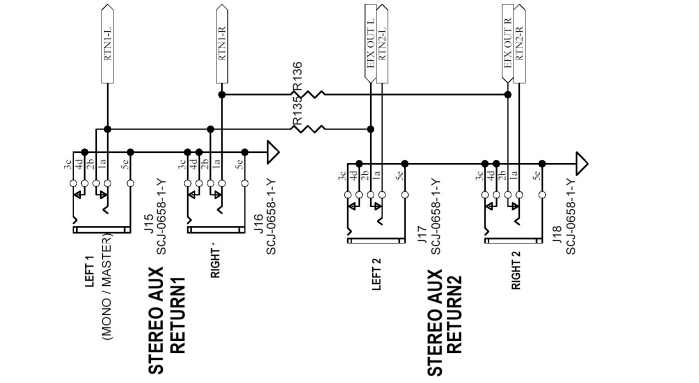
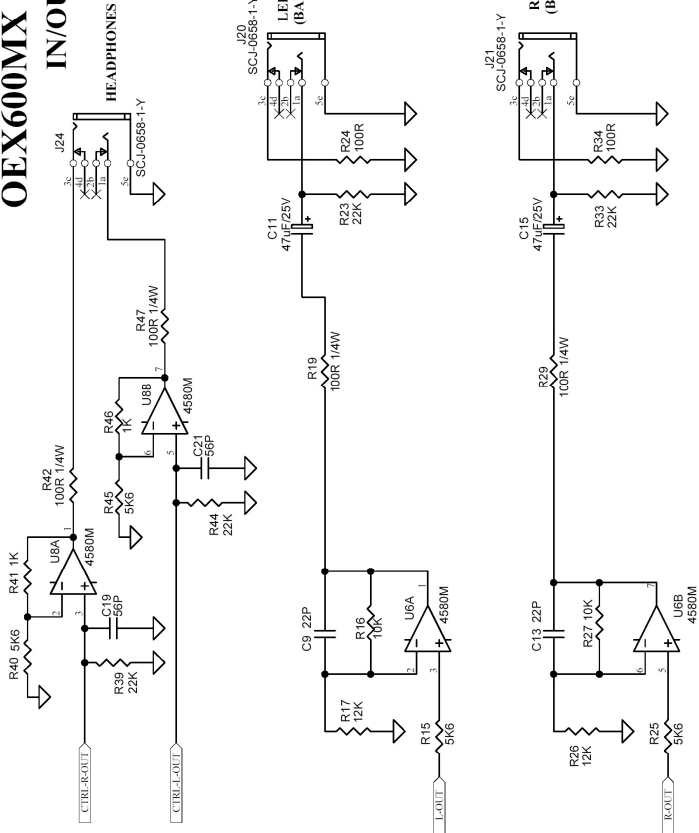
OEX600MX (1/2) IN/OUT



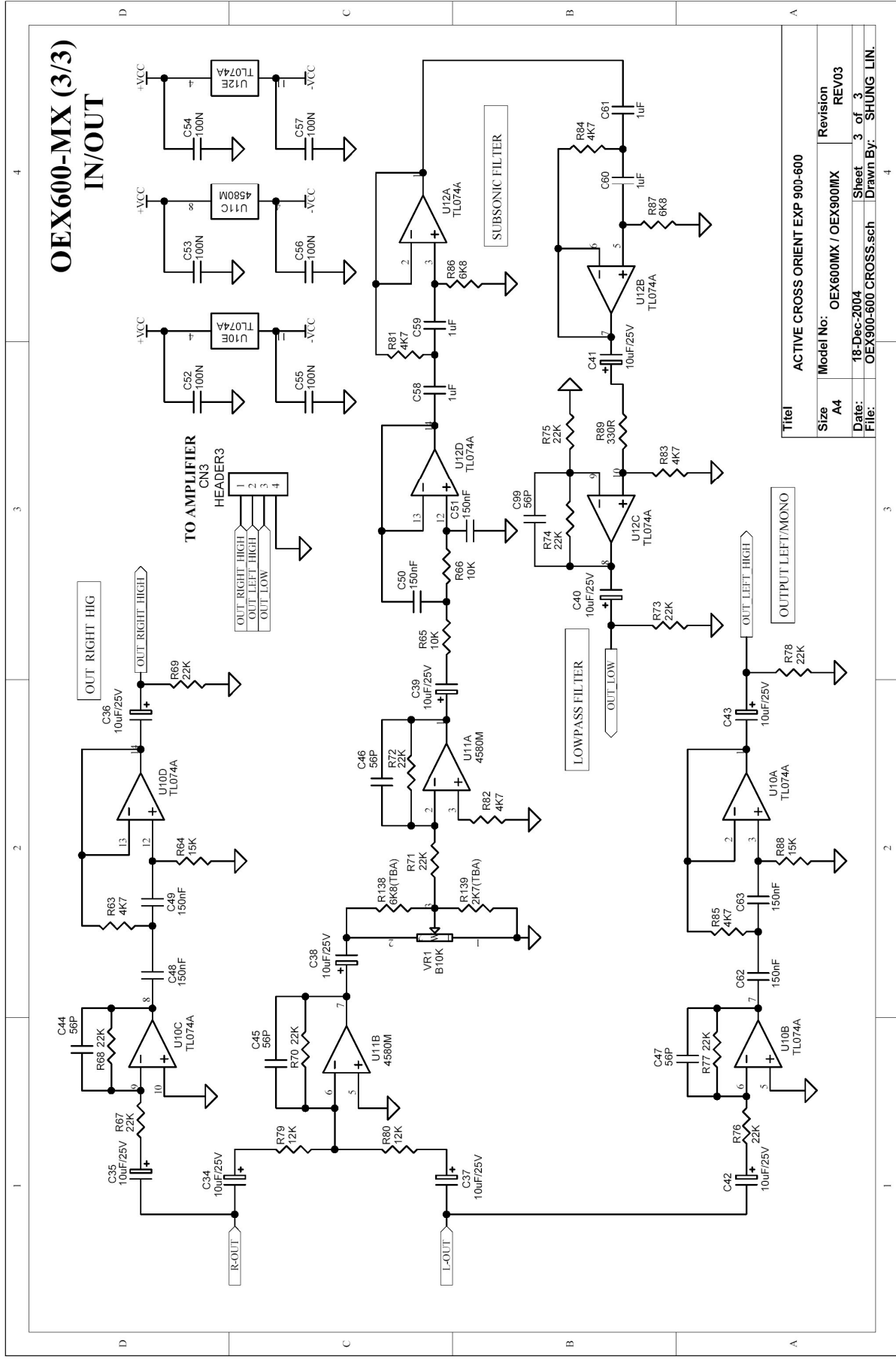
| | | | |
|-------|----------------------|-----------|------------|
| File | IN_OUT BOARD | Revision | |
| Size | Model No: OEX600MX | REV/03 | |
| Date: | 5-Jan-2005 | Sheet | 1 of 3 |
| File | C:\E600MX\INOUT1.SCH | Drawn By: | SHOUBU LIN |

OEX600MX (2/2)

IN/OUT



| | | | |
|----------|--------|--------------|-------------|
| Title | | IN_OUT BOARD | |
| Size | A3 | Model No. | OEX600MX |
| Revision | REV03 | Date: | 18-Dec-2004 |
| Sheet | 2 of 3 | Drawn By: | SHUNG LIN |



OEX600-MX (3/3)
IN/OUT

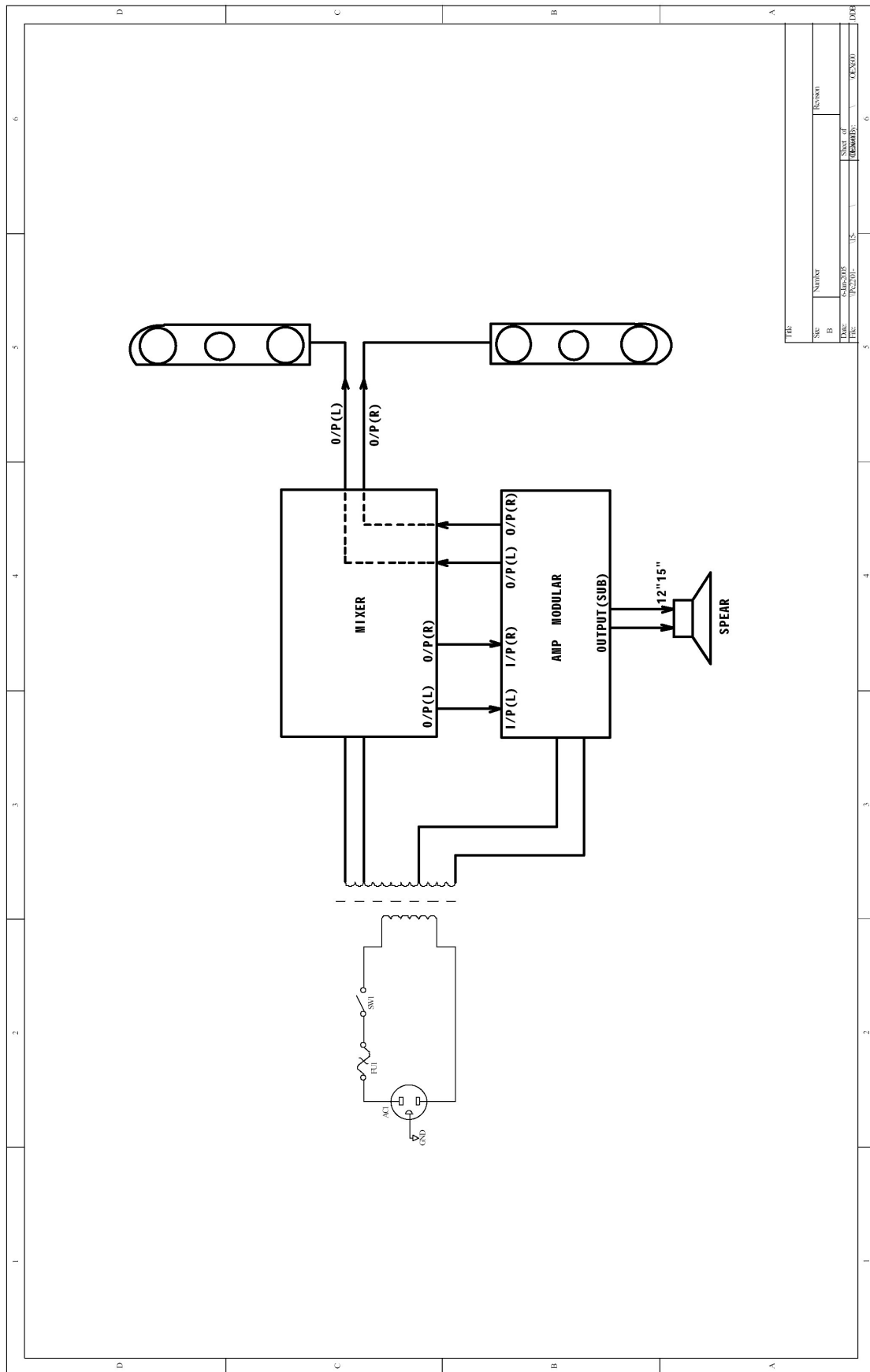
TO AMPLIFIER
CN3
HEADER3

1
2
3
4

OUT RIGHT HIGH
OUT LEFT HIGH
OUT LOW

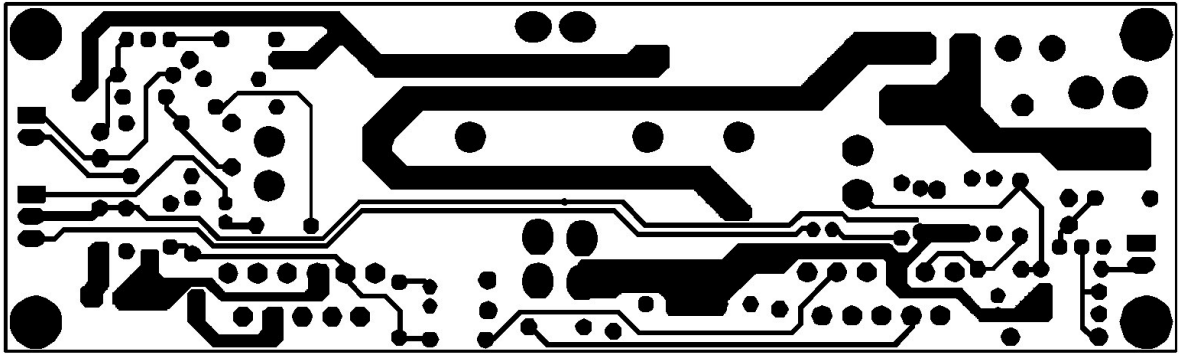
| | | | |
|-------|----------------------|---------------------------------|---------------------|
| Title | | ACTIVE CROSS ORIENT EXP 900-600 | |
| Size | A4 | Model No: | OEX600MX / OEX900MX |
| Date: | 18-Dec-2004 | Revision | REV03 |
| File: | OEX900-600 CROSS.sch | Sheet | 3 of 3 |
| | | Drawn By: | SHUNG LIN. |

5. Wiring Diagram

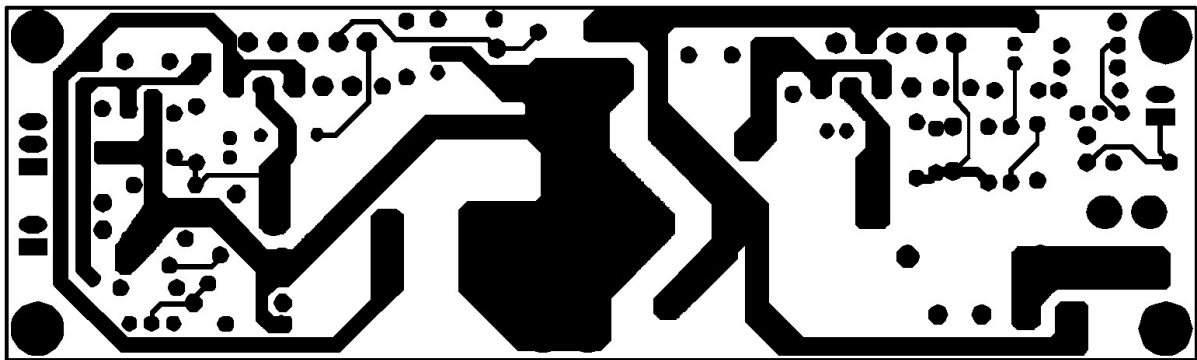


6. PCB Layout

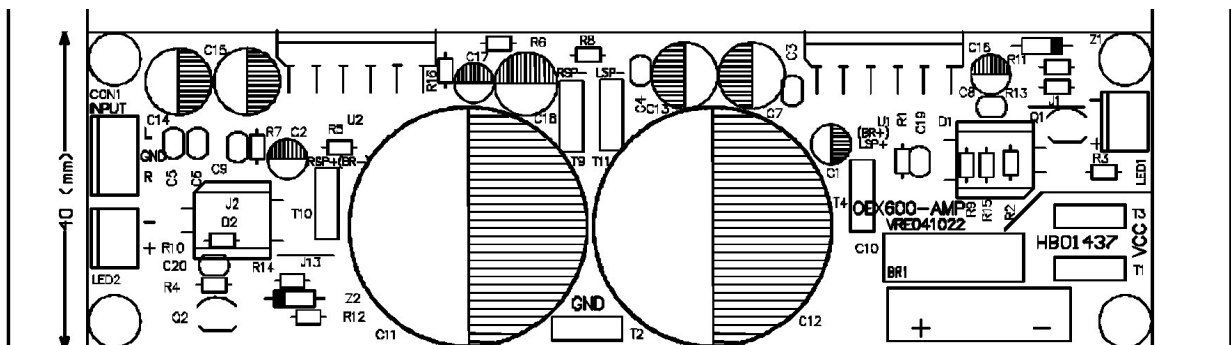
OEX600-AMP



Bottom layer

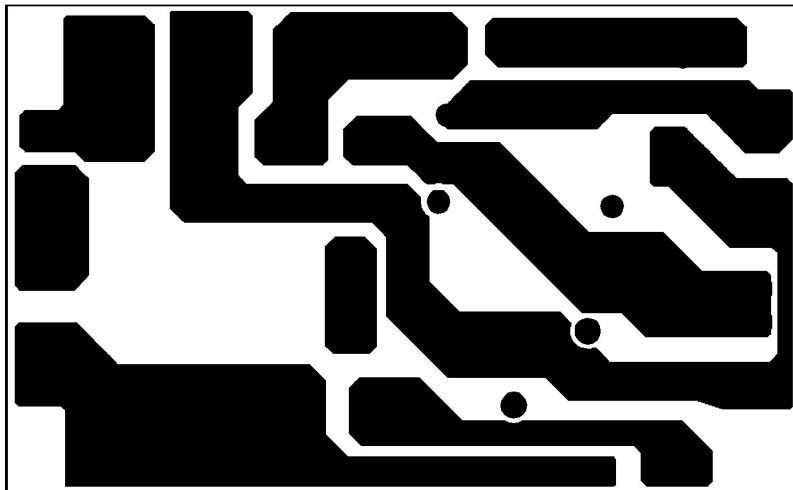


Top layer

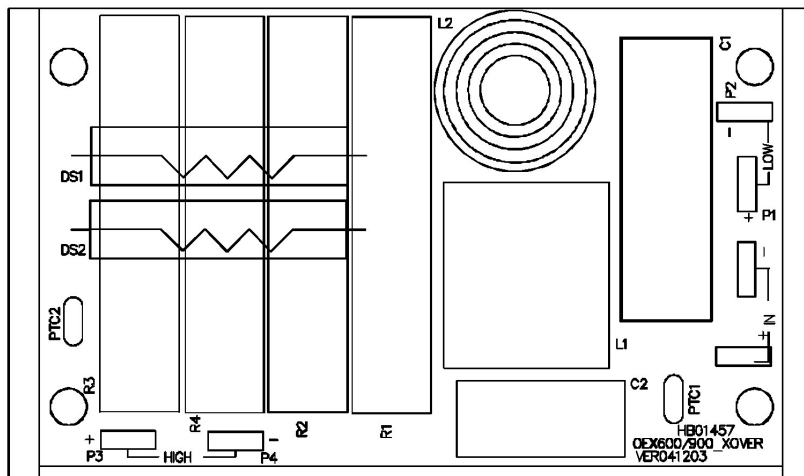


Top overlay

OEX600/900 XOVER

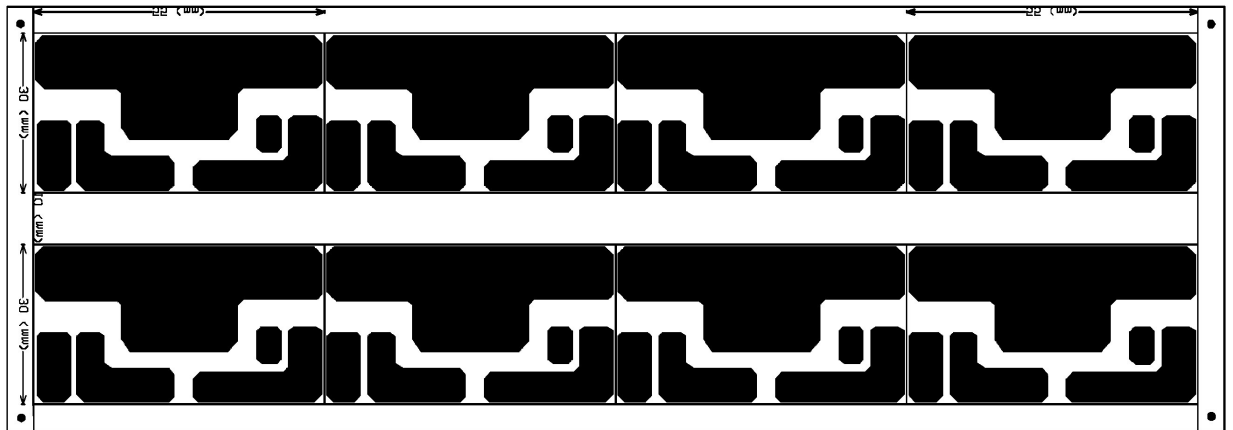


Bottom layer

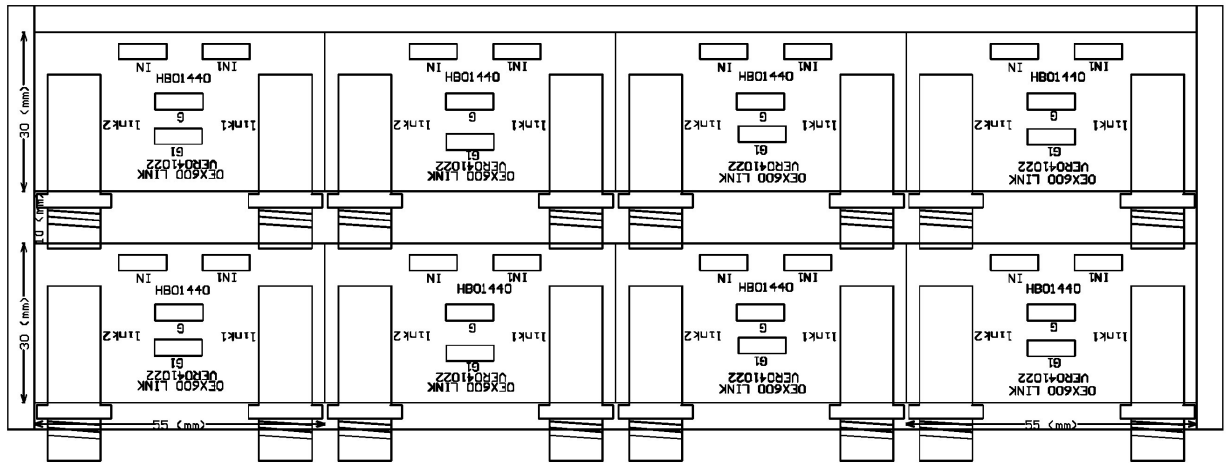


Top overlay

P-OEX600-LINE

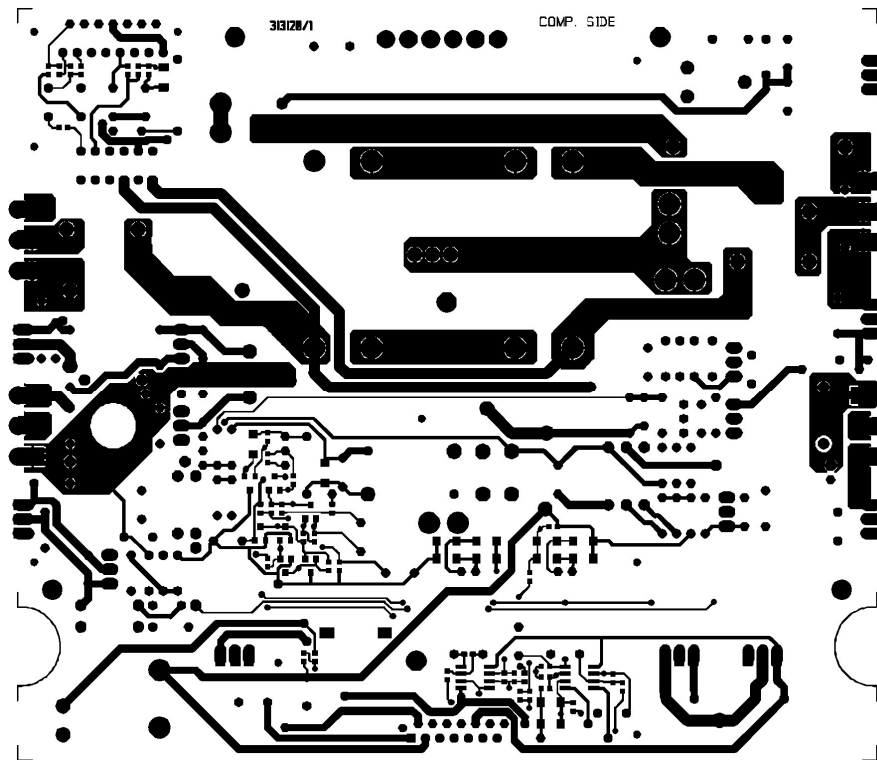


Bottom layer

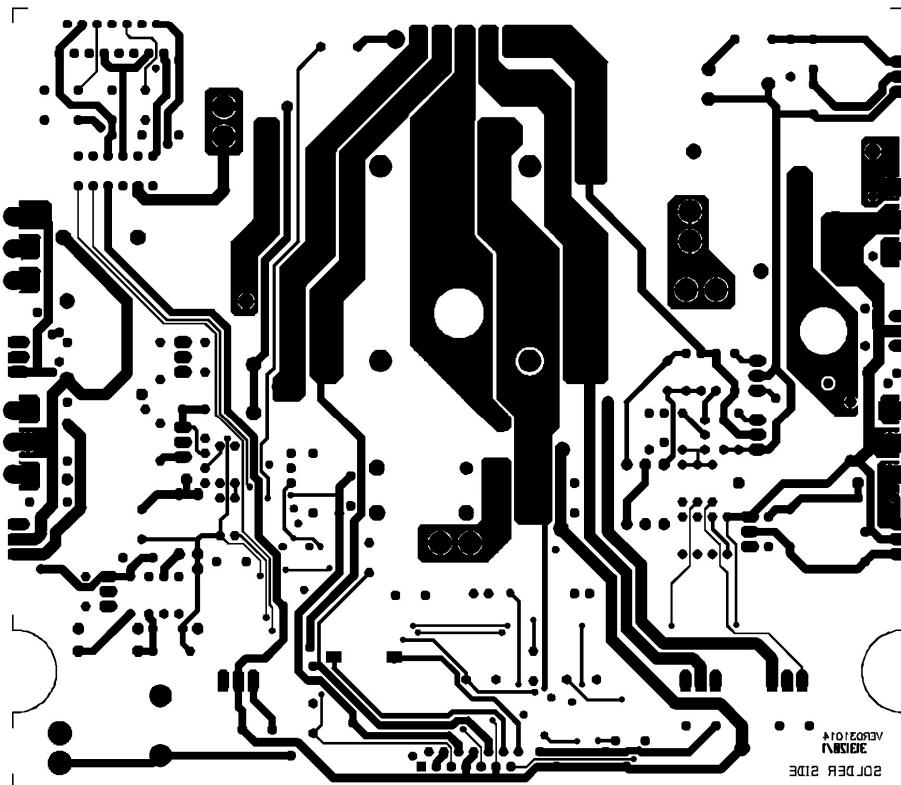


Top overlay

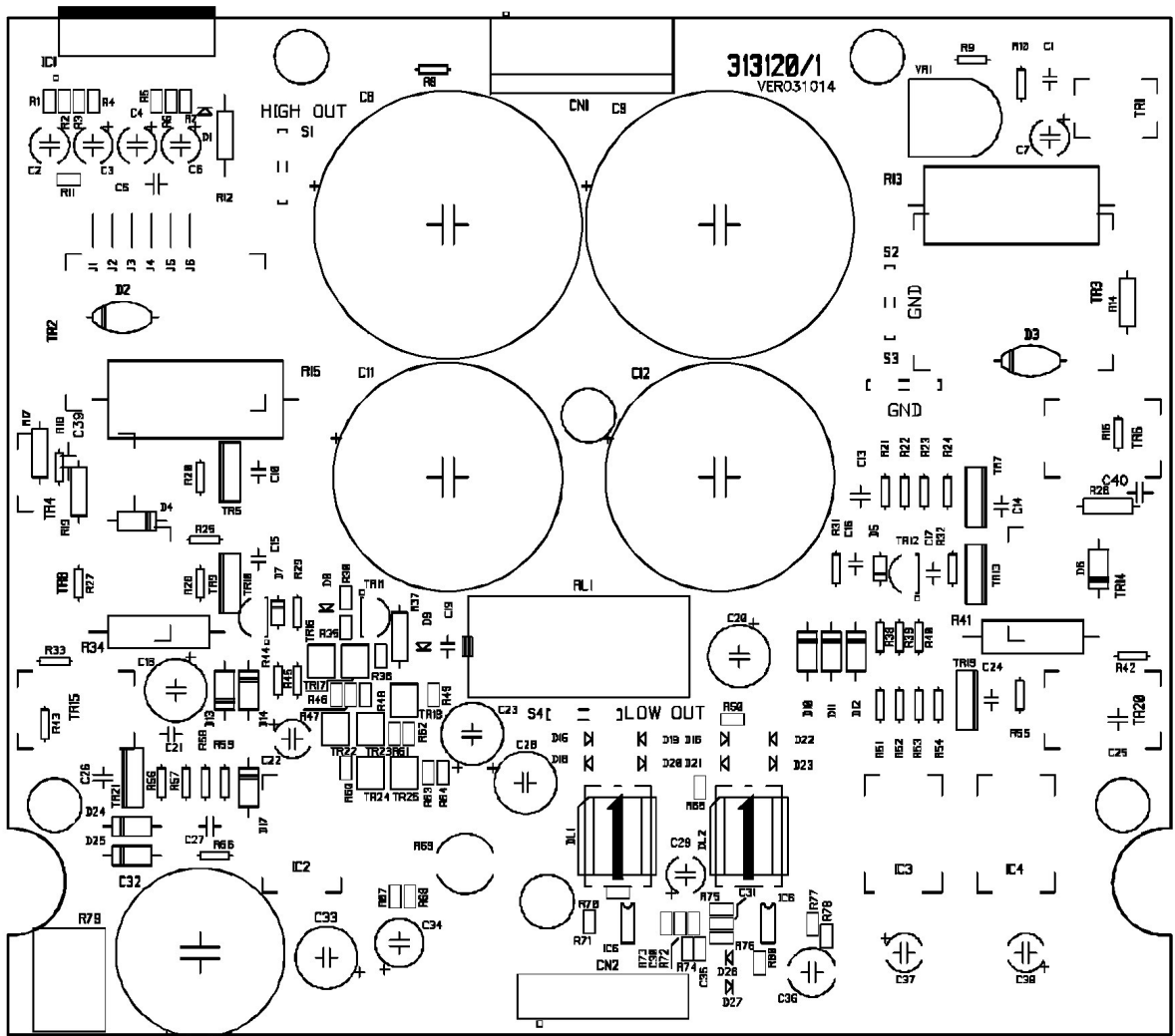
P-313120/1



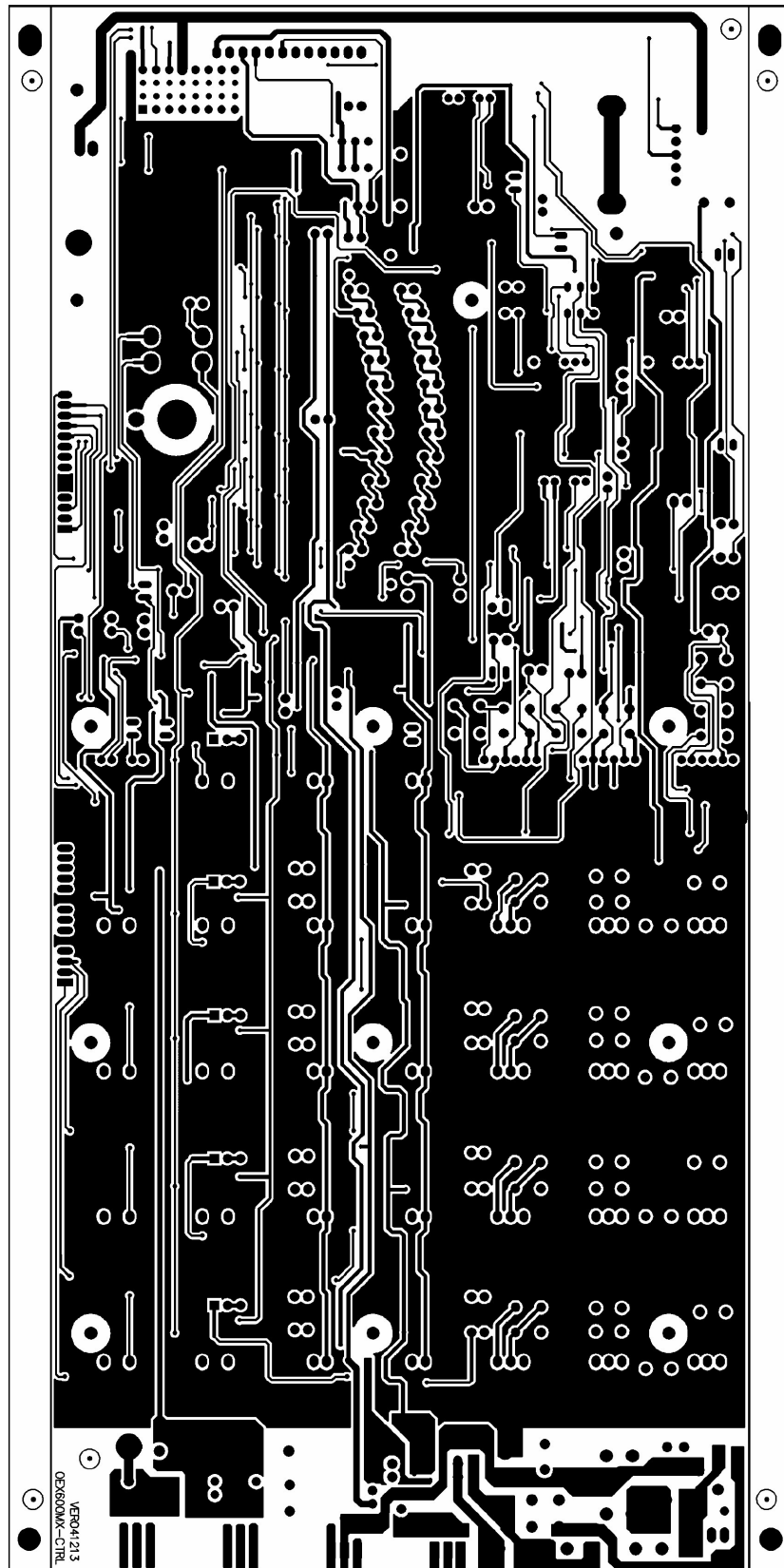
Top layer



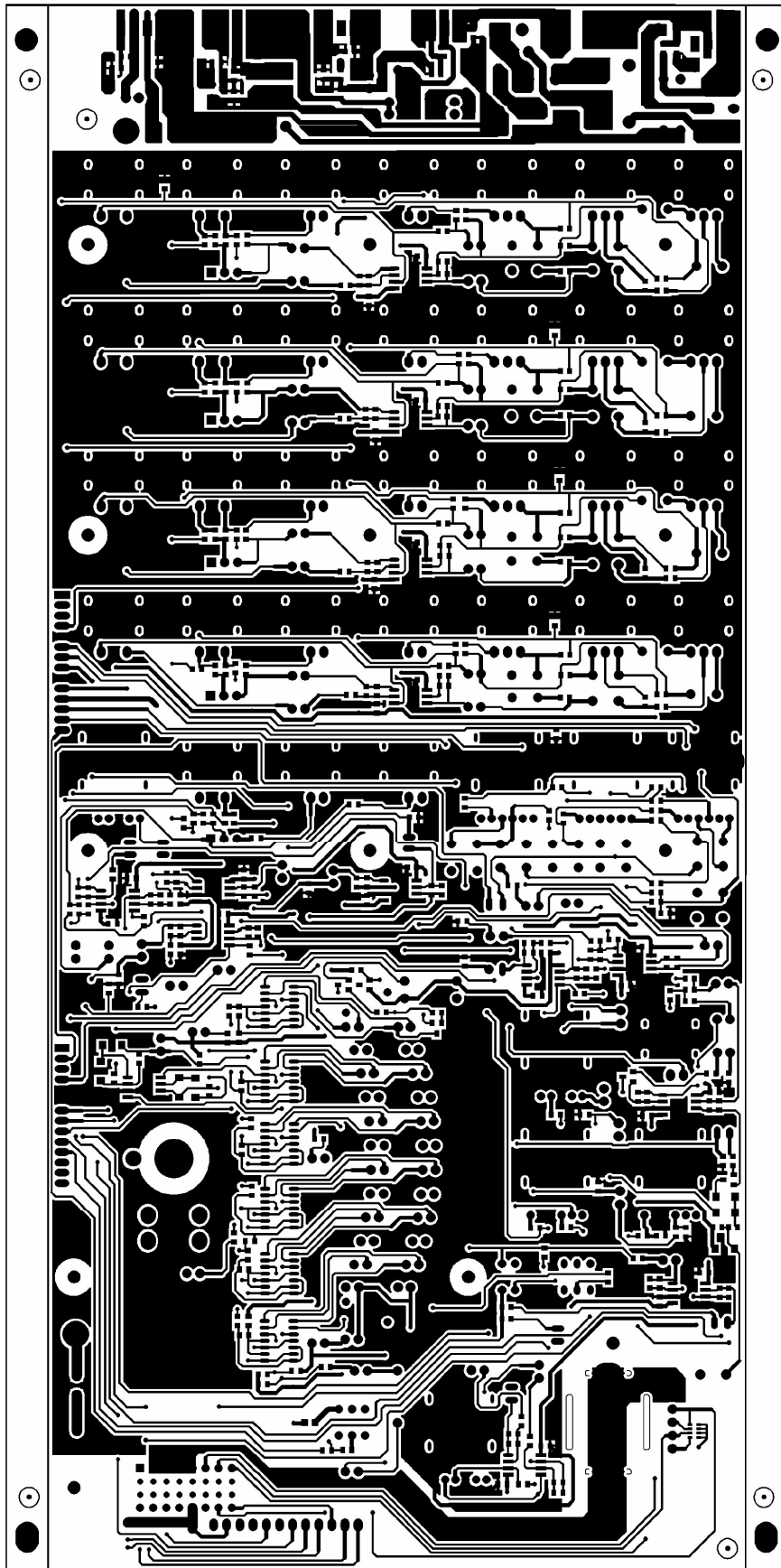
Bottom layer



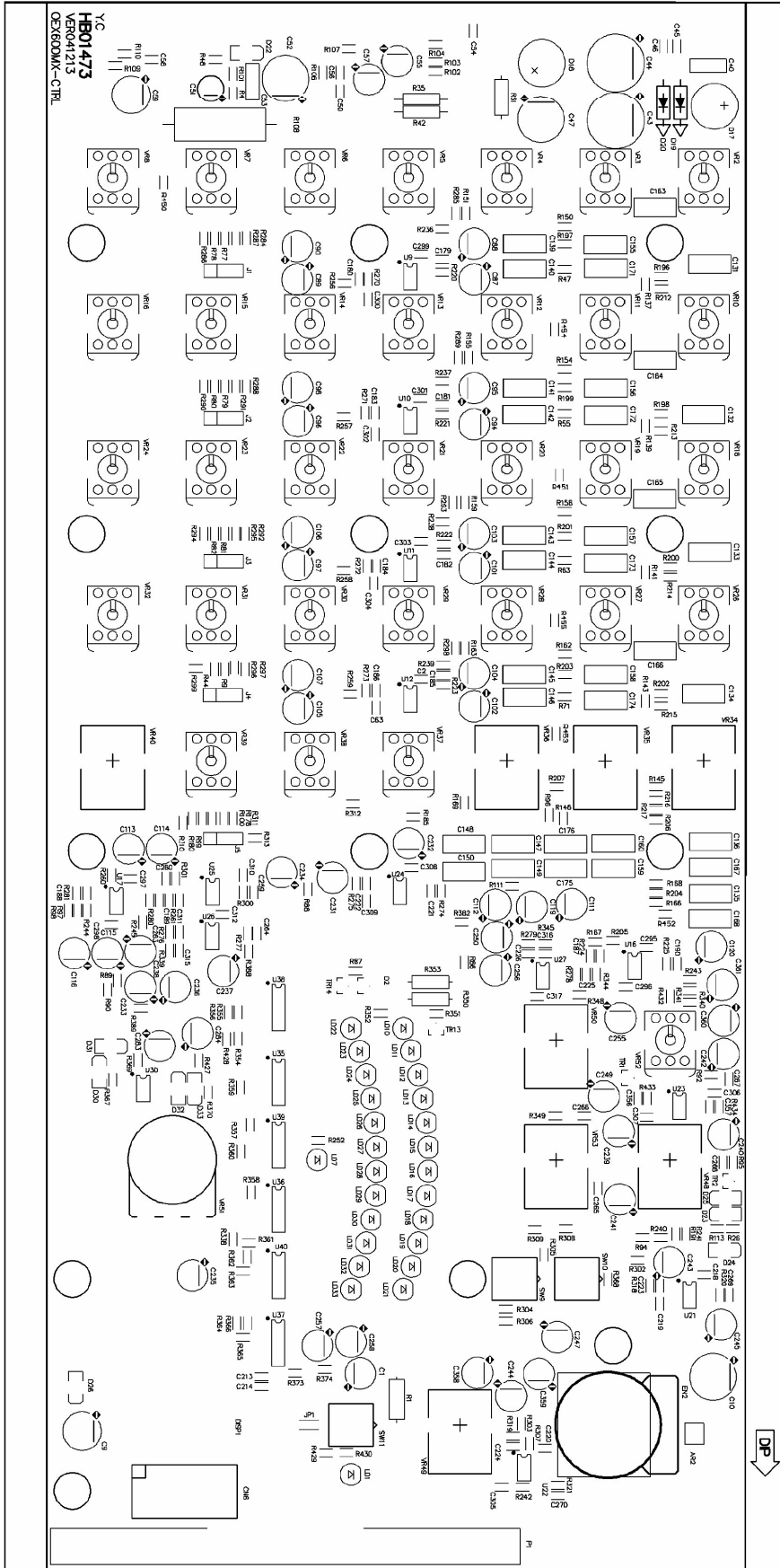
Top overlay



Bottom layer

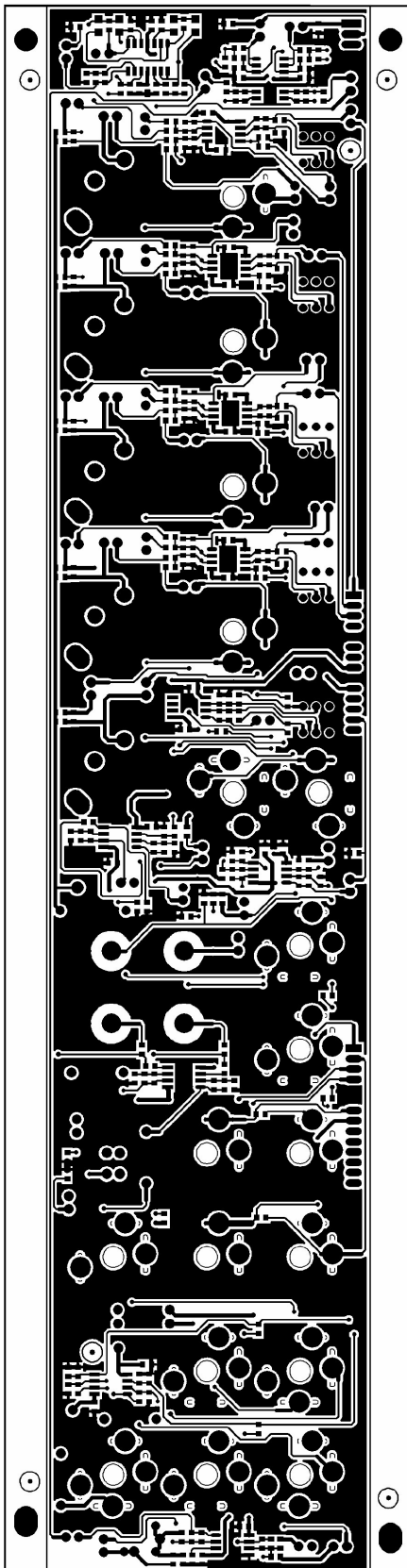


Top layer

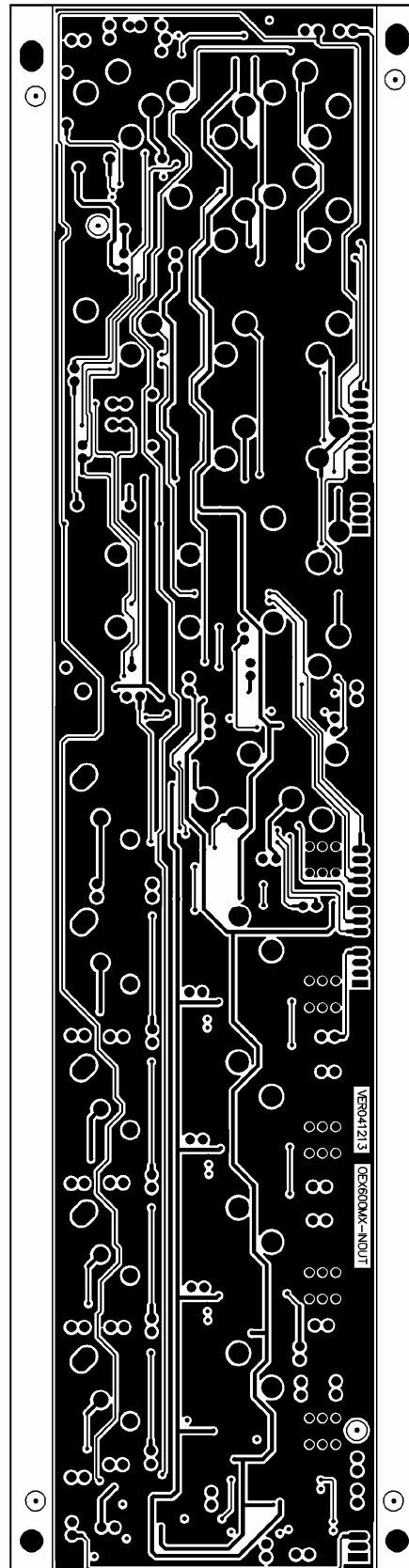


Top overlay

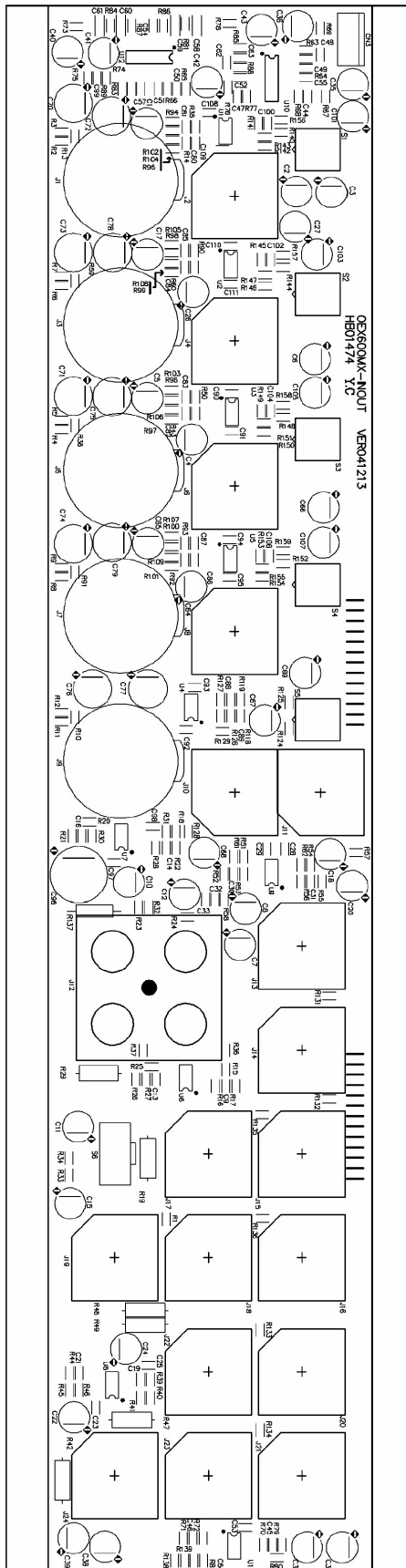
OEX 600 MX-INOUT



Top layer



Bottom layer



Top overlay

7. Test Procedure And Test Result

7.1 OEX 600-AMP Test

Test instruments: Signal generator; Dual track oscillograph; AC Power ($\geq 1KW$), DDM,
Load: 4Ohm 500W, 8Ohm 300W

Note: the Oscillograph should use a individual power supply, and the ground of Oscillograph can't connect to the ground of electrical system.

7.1.1 Inspection

- Check the fuse specification if it is ok .
- Make sure heat sink and transistor TR1-15 fixed well.

7.1.2 connection

- Turn power switch to the position of "O"
- Connect the power cord of this unit to the AC power,
- Set the signal generator at 1000Hz 2.3dB \pm 0.2dB, connect the signal wire.
- Connect the low output to load resistance 4Ohm.
- Connect the Oscillograph to low output terminal
- Set the signal generator at 1000Hz 0dB \pm 0.2dB, connect the signal wire.
- Connect L/R output terminal to load resistance 8Ohm.

7.1.3 Test

- Use DDM to test the following IC or the output voltage of capacitor to the ground.

IC3: -15V \pm 0.2Vdc

IC4: +15V \pm 0.2Vdc

- Turn on the signal generator, check the output of test instruments on the display, make sure the wave is symmetrical and no significant distortion or vibration
- Check the output voltage: 22 \pm 1.0V(Sub), 31 \pm 1.0V(L/R)

7.1.4 PTC test

Heat up the body of PTC by heat gun, make sure if the protection is normal. The wave of output terminal will decrease after heating, the higher of the PTC, the smaller the wave of output.

Note: The PTC must be test in right way, when the test is over, please put the PTC in the installation hole of heat sink, and make sure a good ventilation in the hole.

7.1.5 Adjust stable current

Adjust VR1 to make sure that the voltage of cement insistence is 4.8mV \pm 0.1mV(No resistance connecting to the output terminal, and test this function when all of the above tests are over).

7.2 OEX600-MX Test

7.2.1 test instruments

AP , Dual track oscillograph, DDM

7.2.2 Instruments set

a. AP output: 1kHz 0dBu sine wave at, load out 40Ω, Bal. -Float or load out 600Ω BNC-Unbalanced.

b. AP input: load 100KΩ BNC-Unbalanced Bal.-Float
BW: 22Hz-22KHz. Filter: A – Weighted (1207)

7.2.3 Inspection

Inspect the appearance of OEX 600-MX , it should be ok.

Inspect the potentiometer knobs, which should be fixed well for adjusting.

7.2.4 Functions test

a. Phantom power test

Connect the unit to the main power, POWER LED lights up when turn on the power switch, turn the switch of PHANTOM power ON, use a DDM to test MIC of CH1-CH4, CH5/6, CH7/8, connect the black terminal of the DDM to the first hole of MIC, the red terminal to test the second hole and the third hole, the voltage should be 48V±3V, turn the switch to OFF when the test is finished.

b. OEX600-MX set

Turn all the knobs to the middle position, turn all potentiometers to the MAX. Keep DSP switch stay OFF state. Leave the switches of 2TK TO CTRL ROOM, PAD and 2TK to MAX unengaged. Turn on the power supply, AP signal will be input though LINE IN of every channel. Than yellow LED for MAIN OUT lights up; when you test TYPE IN, please make sure AP output is unbalanced, while, test HEADPHONE OUT, stereo insert is on our recommendation.

c. Output test: (CH1 – CH4)

MAIN OUT LEFT: 4dBu (±3dBu), distortion < 0.1%

MAIN OUT RIGHT: 4dBu (±3dBu), distortion < 0.1%

CTRL ROOM OUT LEFT: 0dBu (±3dBu), distortion < 0.2%

CTRL ROOM OUT RIGHT: 0dBu (±3dBu), distortion < 0.2%

AUX SEND1 OUT: -1dBu(±3dBu), distortion < 0.2%

AUX SEND2 OUT: 0dBu(±3dBu), distortion < 0.2%

HEADPHONE OUT: 1dBu(±3dBu), distortion < 0.3%

TAPE OUT LEFT: 0dBu(±3dBu), distortion < 0.2%

TAPE OUT RIGHT: 0dBu(±3dBu), distortion < 0.2%

HIGH PASS OUT LEFT: 0dBu(±3dBu), distortion < 0.2%

LOW PASS OUT LEFT: 0dBu(±3dBu), distortion < 0.2%

d. Output Test: CH5-6, LEFT IN

MAIN OUT LEFT: 6dBu (±3dBu), distortion < 0.1%

MAIN OUT RIGHT: 6dBu (±3dBu), distortion < 0.1%

CTRL ROOM OUT LEFT: -9dBu (±3dBu), distortion < 0.2%

CTRL ROOM OUT RIGHT: -9dBu (± 3 dBu), distortion < 0.2%

TAPE OUT LEFT: -9dBu(± 3 dBu), distortion < 0.1%

TAPE OUT RIGHT: -9dBu(± 3 dBu), distortion < 0.1%

AUX SEND1 OUT: 0dBu(± 3 dBu), distortion < 0.1%

AUX SEND2 OUT: 2dBu(± 3 dBu), distortion < 0.1%

HEADPHONE OUT: 0dBu(± 3 dBu), distortion < 0.2%

e. Output test: CH5-6, RIGHT IN

MAIN OUT RIGHT: -1dBu (± 3 dBu), distortion < 0.1%

MAIN OUT LEFT: < -50dBu

CTRL ROOM RIGHT OUT: -9dBu (± 3 dBu), distortion < 0.1%

CTRL ROOM LEFT OUT: < -62dBu

HEADPHONE OUT: 0dBu (± 3 dBu), distortion < 0.3%

f. LEDs for levels of MAIN OUT, MONITOR OUT test

Set the level of AP output signal is 10dBu, connect AP input to MAIN OUT, turn MAIN LEVEL from MIN. to MAX. during the adjustment, inspect the output level on the computer LCD, the level indicated by LED should be the same as computer LCD displays. The deviation is ± 2 dBu. And please be noted that these LCDs are lighting up by the sequence from low to high.

g. PAD switch, MIC socket, DSP switch, FOOT SW and DSP function test.

- Input the signal at 1KHz, -20dBu in balanced from MIC socket, when PAD button is not engaged, the level value approaches to the value from LINE IN input. But when press PAD button, the relative output level will be decreased by 20dBu(± 3 dBu).
- When you press and release DSP button, DFX MUTE PEAK LED will be switched from ON to OFF. Connect FOOT SW, when the FOOT SW is operated, DFX MUTE PEAK LED should be switched from ON to OFF.
- When red LED is OFF, it means the DSP is working, then adjust FRESETS Switch, the red indicator will be flash one time, and the wave on monitor scope will be changed correspondingly.
- Turn AUX RTN 2 (DFX) knob to the MIN, then adjust PRESETS switch, there is no changes to the wave on monitor scope.

h. AUX RTN 1 input, AUX RTN1 knob function test

(1) Input the signal of 0dBu through AUX RTN 1 L(MONO)

MAIN OUT LEFT: 4dBu (± 3 dBu), distortion < 0.2%

HEADPHONE OUT: 4dBu (± 3 dBu), distortion < 0.2%

(2) Input the signal of 0dBu to AUX RTN 1 RIGHT

MAIN OUT LEFT: < -53dBu

MAIN OUT RIGHT: 5dBu (± 3 dBu), distortion < 0.2%

(3) Turn AUX RTN 1 knob from MIN. to MAX, the output level will be changed correspondingly.

i. AUX RTN 2 input test

(1) Input the signal of 0dBu through AUX RTN 2 LEFT

MAIN OUT LEFT: 3dBu (± 3 dBu), distortion < 0.2%

MAIN OUT RIGHT: < -54dBu

(2) Input the signal of 0dBu to AUX RTN 2 RIGHT

MAIN OUT LEFT: < -54dBu

MAIN OUT RIGHT: 3dBu (± 3 dBu), distortion < 0.2%

j. AUX2 TO AUX1 knob function test

(1) Input the signal of 0dBu through AUX RTN1, connect AP input to AUX SEND 1, AUX SEND 1: -2dBu

(2) Turn AUX2 TO AUX1 knob from the MIN. to MAX.

MAIN OUT: 6dBu (± 3 dBu), distortion < 0.1%, the output level of AUX SEND 1 will be changed correspondingly.

k. Function test of 2-TRACK IN jack, 2TK TO CTRL ROOM switch, 2TK TO MAX switch, 2TK IN LEVEL knob, and PHONES/CTRL ROOM knob

(1) Input AP signal in unbalanced at 1KHz, 0dBu, 600ohm through 1-TRACK IN LEFT and RIGHT input, connect AP input to CTRL ROOM OUTPUT, press 2TK TO CTRL ROOM switch, the standard is shown as follows: LEFT: 3dBu ; RIGHT: 3dBu

Turn PHONES/CTRL ROOM knob from the MIN. to the MAX, the output level will be changed correspondingly. Release 2TK TO CTRL ROOM switch, no signal output.

(2) Connect AP input to MAIN OUT, press 2TK TO MIX switch, the standard is shown as follows: LEFT: -5dBu; RIGHT: -5dBu

Turn 2TK TO MIX knob from the MIN. to the MAX, the output level will be changed correspondingly. Release 2TK TO MIX switch, no signal output.

l. CH1 – CH4, CH5/6 EQ test:

(1). Input the signal at 1KHz, 0dBu through CH1 and CH5/6, adjust the relative channel level, make the level of MAIN OUT is 0dBu.

Turn HIGH, MID and LOW EQ of relative channels to the middle position, then scan the frequency response. Refer to the following fig, the result is shown as the contour in yellow.

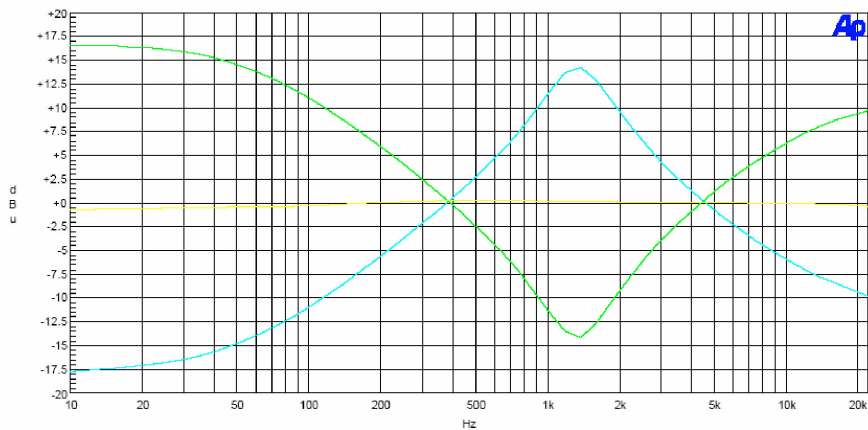
(2) Turn HIGH, and LOW EQ knobs of relative channels full clockwise, turn MID EQ knob full counter-clockwise to the MIN. Then scan the frequency response.

Refer to the following fig, the result is shown as the contour in green.

(3) Turn HIGH, and LOW EQ knobs of relative channels full counter clockwise to the MIN, turn MID EQ knob full clockwise to the MAX. Then scan the frequency response. Refer to the following fig, the result is shown as the contour in blue.

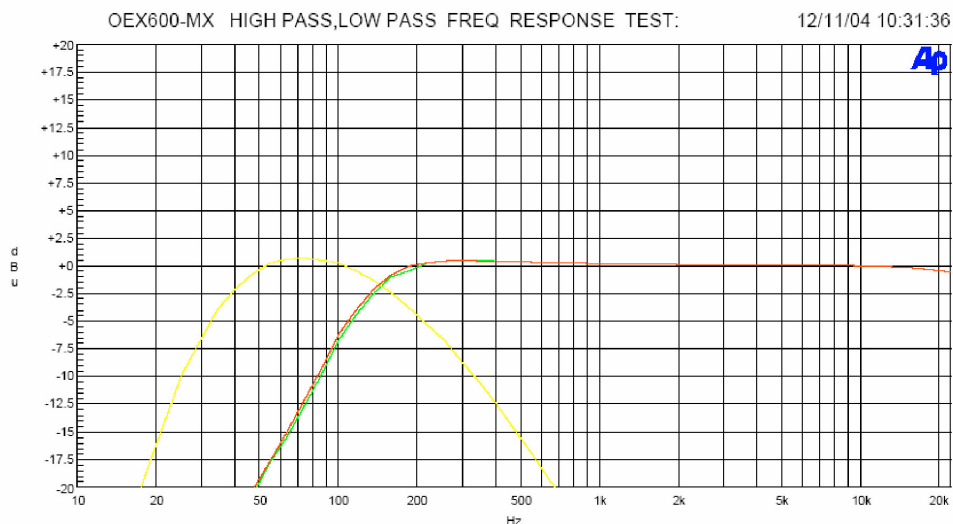
(4) In the Above test, the deviation is ± 3 dBu.

Turn the EQ knobs of all channels to the middle position when the test is over.



m. LOW PASS output and HIGH PASS output test:

Input the signal at 1KHz, 0dBu though CH1, connect the input of AP to the outputs of LOW PASS, HIGH PASS LEFT, HIGH PASS RIGHT separately, adjust MAIN LEVEL, set the level of HIGH PASS is 0dBu, then scan the frequency response, the result is shown as the following Fig.



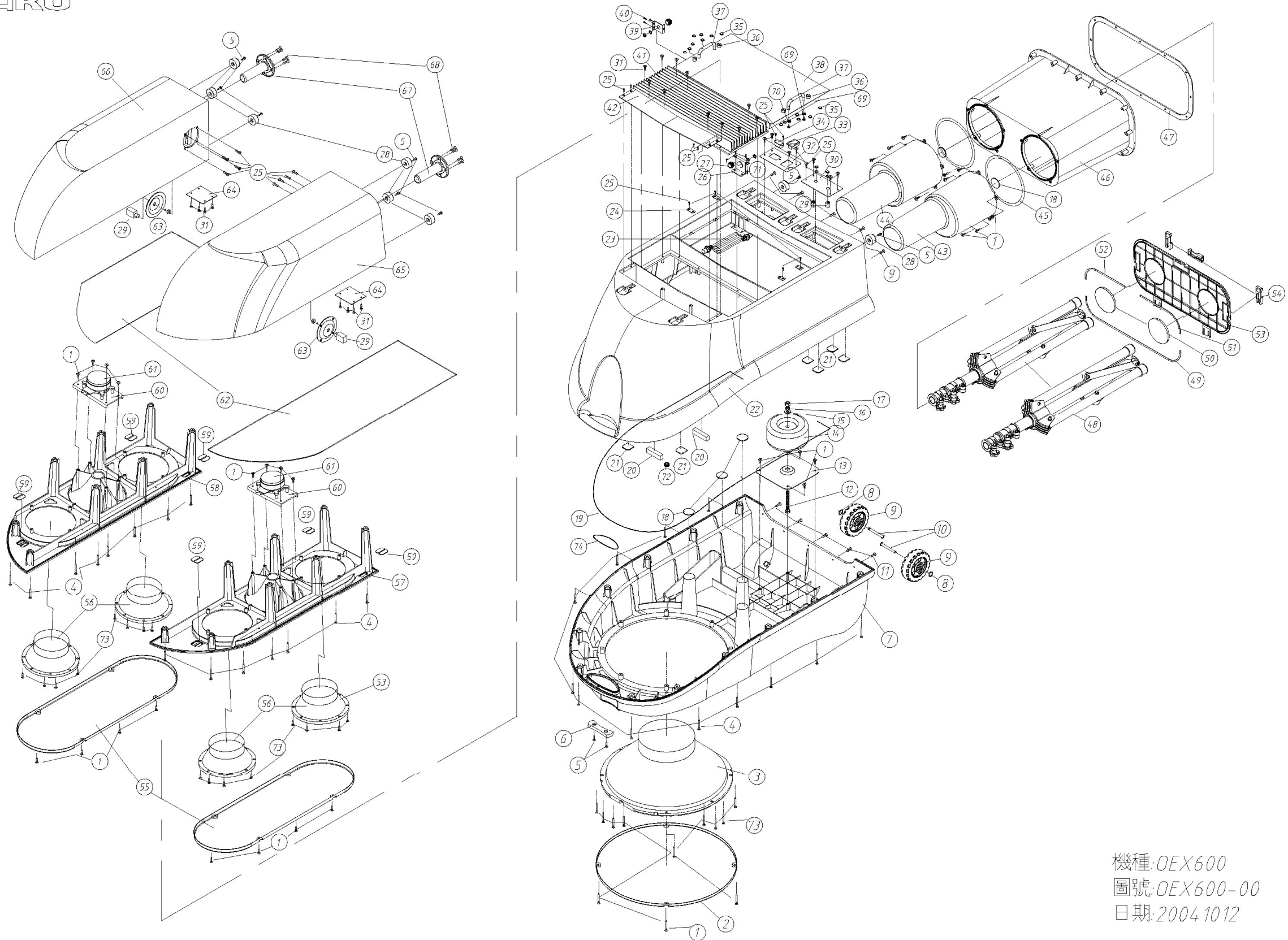
n. Listening test.

Input the music signal of moderate level to all the signal inputs separately, connect the output terminals of the unit to amplifier, and connect HEADPHONE OUT to a pair of headphones, when you are testing every input and output channel, please adjust all the relative potentiometers from the MAX. to the MIN. repeat this operation for two times, it should be no noise during the adjustment. And check the output signal should be changed correspondingly, press and release the relative switches for two times, it must be no hum caused by the current, and these switches are working well.

Company preset: turn all level knobs to the MIN, turn off PHANTOM power, other knobs to the middle position.

8. Exploded Views & Mechanical Parts List

SEKAKU



機種: OEX600
 圖號: OEX600-00
 日期: 2004.10.12

| No. | Part No. | Descriptions | specification | Qty |
|-----|----------|------------------|-------------------------------|-----|
| 1 | MG00031 | screw | M4×12 | 38 |
| 2 | MD00588 | ZB-iron net | OEX 0.8t* φ 407*19-v1.0 | 1 |
| 3 | | 12" speaker | | 1 |
| 4 | MG00491 | screw | M4×35 | 30 |
| 5 | MG00454 | screw | M4*20 | 10 |
| 6 | NI03294 | Plastic foot | 8t*75.7*23-V1.0 | 1 |
| 7 | NI03228 | chassis | 6t*885.422*529*205.47-OEX | 1 |
| 8 | MK00082 | spring | φ 2.7*14.5 | 2 |
| 9 | NI01990 | PU chain wheel | φ 91*37 | 2 |
| 10 | MH01166 | Fixed bolt | OEX φ 6*58.8-V1.0 | 2 |
| 11 | MG00393 | screw | M4*20 | 12 |
| 12 | MG00556 | screw | M8*82.5*1.25PH | 1 |
| 13 | MI02422 | ZB-fixed board | OEX 1.5t*175*140-V1.0 | 1 |
| 14 | | transformer | | 1 |
| 15 | MF00026 | Color washer | 1.5t* φ 8* φ 18 | 1 |
| 16 | MF00041 | washer | 2.0t* φ 8*3t*32.8*34.5 V1.013 | 1 |
| 17 | ME00026 | Zn-screw | M8 | 1 |
| 18 | ND00470 | EV-sponge | 2t* φ 32 | 3 |
| 19 | NI03310 | Rubber-NBR50° | OEX φ 2*2207.5 | 1 |
| 20 | ND00467 | EV-sponge | 2t*29.5*4.5 | 2 |
| 21 | NI03310 | Rubber | 3t*32.8*34.5 V1.0 | 6 |
| 22 | NI03227 | Top | 6t*890.405*529.972*332.29 | 1 |
| 23 | | wire | | 1 |
| 24 | MI02420 | ZD-fixed sheet | OEX 1.2t*26*12 | 4 |
| 25 | MG00387 | screw | M3*20 | 24 |
| 26 | MI02424 | ZB-fixed bracket | OEX 1.0t*59*40*24.8- V1.0 | 1 |
| 27 | | Balance jack | | 2 |
| 28 | NI02728 | Plastic foot | φ 29.5*14 | 8 |
| 29 | | Speaker jack | | 4 |
| 30 | MI02432 | ZB fixed bracket | OEX 1.0t*111*59(φ 12)-V1.0 | 1 |
| 31 | MG00387 | screw | M3*20 | 12 |
| 32 | MI02428 | ZB-fixed bracket | OEX 1.0t*111*59(power)-V1.0 | 1 |
| 33 | HI00022 | Power switch | 4P black key R13-69A | 1 |
| 34 | HC00008 | AC socket | 3515 Type(rf-2004-C-4.8) | 1 |
| 35 | ME00015 | Color screw | 3mm | 20 |
| 36 | MG00548 | screw | φ 12*35(M4*0.7PH) | 4 |
| 37 | MI02433 | handle | OEX φ 6*63*26 | 2 |
| 38 | MA03631 | ZC-panel | OEX600 ALTO-V1.0 | 1 |
| 39 | HK04825 | K-PCB | P-OEX-CONNATOR(OEX900) | 1 |
| 40 | MG00518 | screw | M3*7*0.5PH | 3 |
| 41 | MI02454 | ZE-heat sink | 162*40*285.5 OEX600-V1.0 | 1 |
| 42 | MA00002 | ZB-panel | OEX1.2t*361*59.5-V1.0 | 1 |
| 43 | MI02425 | ZD-rear panel | OEX1.0t*369*220*31 V1.0 | 1 |
| 44 | NI03230 | Store | φ 162*333-OEX | 1 |
| 45 | NI03412 | Rubber-NBR50° | OEX φ 1.5*1756 | 3 |

| No. | Part No. | Descriptions | specification | Qty |
|-----|----------|-----------------------|------------------------------|-----|
| 46 | NI03229 | store | 3t*430.5*214.5*288.5 | 1 |
| 47 | ND00469 | EV-sponge | 2.5t*1150*16-V1.0 | 1 |
| 48 | MI02344 | bracket | φ 126*610 F8-V1.0 | 2 |
| 49 | ND00472 | EV-sponge | 1.0t*460*4-V1.0 | 2 |
| 50 | ND00472 | EV-sponge | 5t* φ 80-V1.0 | 2 |
| 51 | NI02031 | Fixed sheet | OEX 19.8*9*11.5-V1.0 | 2 |
| 52 | MG00020 | screw | M3*8 | 6 |
| 53 | NI03232 | Rear cover | 3t*392.466*14.352*210.4-V1.0 | 1 |
| 54 | NI03237 | Rear cover | 52*19*9.5-OEX V1.0 | 4 |
| 55 | MD00590 | ZB-iron net | OEX 0.8t*575*195-V1.0 | 2 |
| 56 | | 6.5"speaker | | 4 |
| 57 | NI03233 | speaker | 6.5"722.9*223.6*99.8 right | 1 |
| 58 | NI03234 | speaker | 6.5"722.9*223.6*99.8 lift | 1 |
| 59 | NI03311 | Cushion | 1.5t*28.8*12 | 12 |
| 60 | NI02374 | Fixed broad | 70*135*10 432C | 2 |
| 61 | | Hi speaker | | 2 |
| 62 | ND00460 | EV-sponge | OEX2.0t*162*10 V1.0 | 2 |
| 63 | MI02419 | ZB-fixed sheet | OEX 1.5t φ 80*7(φ 9.5) V1.0 | 2 |
| 64 | | PCB | | 2 |
| 65 | NI03235 | Rear cover | 6.5"722.6*223*208.5 right | 1 |
| 66 | NI03236 | Rear cover | 6.5"722.6*223*208.5 lift | 1 |
| 67 | MH01160 | ZB fixed sheet | OEX φ 70*96-V1.0 | 2 |
| 68 | MG00579 | screw | M5*20 | 8 |
| 69 | MG00262 | screw | M4*8 | 4 |
| 70 | MF00038 | washer | φ 4* φ 7*1t | 4 |
| 71 | MG00045 | screw | M3*7 | 4 |
| 72 | Ni01984 | Hole NBR70° | φ 20.5*6 | 1 |
| 73 | MG00351 | screw | M4*16 | 24 |
| 74 | ND00459 | EV-sponge | OEX2.0t*380*10-V1.0 | 2 |
| 75 | NA00320 | Pearl sponge | 3375*56.5*85.5 | 1 |
| 76 | NA00319 | Pearl sponge | 396.5*232.5*10 | 1 |
| 77 | MG00764 | ZD solder OEX-57 | OEX φ 17* φ 21**29-V1.0 | 2 |
| 78 | MJ00759 | ZD fixed sheet OEX-59 | OEX 40*20*4 V1.0 | 2 |
| 79 | MG00063 | screw | M3*12 | 12 |
| 80 | ND00468 | EV-sponge | 1.0t*1210*13.5-V1.0 | 1 |
| 81 | MG00041 | screw | M3*6 | 4 |
| 82 | MI02540 | ZB-fixed bracket | OEX 1.2t*60*38.7-V1.0 | 1 |
| 83 | MG00262 | screw | M4*8 | 4 |
| 84 | MA00096 | ZB panel | OEX 1.5t*400*162-V1.0 | 1 |
| 85 | NI03238 | Fixed broad | φ 384*26-OEX V1.1 | 1 |

9. BOM

| No. | Part No. | Descriptions | Specification | Remark |
|-----|----------|----------------------|------------------------------------|--------|
| 1 | TD00373 | transformer | PT-OEX600_230V | |
| 2 | NI00218 | cable tie | ALT-102SB | |
| 3 | MG00454 | screw | M4*20 | |
| 4 | MG00491 | screw | M4*35 | |
| 5 | MG00393 | screw | M4*20 | |
| 6 | NI03228 | rear | 6t*885.422*529.972*205.47-OEX_V1.1 | |
| 7 | NI03227 | top cover | 6t*890.405*529.972*332.29-OEX_V1.1 | |
| 8 | NI03238 | fixed board | φ 384*26-OEX_V1.1 | |
| 9 | NI00437 | rubber coil | φ 20* φ 120*2tB | |
| 10 | MG00605 | screw | M8*51*1.25PH_V1.0 | |
| 11 | ME00026 | nut | 8m/m | |
| 12 | MF00026 | washer | φ 8* φ 18*1.5t | |
| 13 | MF00041 | washer | φ 8* φ 13.5*2t | |
| 14 | NI02728 | rubber foot | φ 29.5*14 black | |
| 15 | MG00548 | screw | φ 12*35(M4x0.7PH)_V1.1 | |
| 16 | NI03232 | rear cover | 3t*392.466*14.352*210.4-OEX_V1.1 | |
| 17 | NI03237 | rear cover | 55*19*9.5-OEX_V1.0 | |
| 18 | MD00588 | iron net | OEX 1.2t* φ 407*19_V1.1 | |
| 19 | MD00587 | iron net | OEX 1.2t* φ 407*19_V1.2 | |
| 20 | MD00584 | iron net | 1.2t*435*435_V1.1 | |
| 21 | HK04764 | speaker | 12inch 110W 6Ω OEX600 | |
| 22 | HG00158 | voice coil | φ 50.5*36*6.3OHM*0.32 ASV_V1.0 | |
| 23 | NH00242 | paper | B0710B_CN 318.50T3 Z5 45HZ | |
| 24 | NH00243 | cushion | C0810A_GR 318/6+2 | |
| 25 | ND00377 | spider | D0780A_CT 50-150/8 C5_V1.0 | |
| 26 | NH00233 | cover | E0649A_CP 108/C | |
| 27 | MH01567 | T type middle pillar | H0722A_PN 50/1100.8 D18 | |
| 28 | MH01645 | washer | I0713A_PS 50/1100.8 SW V_V1.4 | |
| 29 | MH01566 | magnet | G0425A D134*57*19 | |
| 30 | MI01517 | bracket | L0710B_CR 318/VN | |
| 31 | HC00426 | terminal | M0021B_PT2.1 | |
| 32 | HC00496 | connect terminal | 0.8*13*16.3mm | |
| 33 | HC00495 | connect terminal | 0.8*13*16.3mm | |
| 34 | NI02583 | terminal block | 3.5*24.5*3t | |
| 35 | MH01110 | rivet | M0500A_OU-30 | |
| 36 | HA02493 | strand | TA4X4YKA42W*110mm | |

| No. | Part No. | Descriptions | Specification | Remark |
|-----|----------|------------------------|--------------------------------------|--------|
| 37 | HA02079 | strand | TA4X4YKA42W*1M | |
| 38 | NE11169 | label | HK 12 ALTO | |
| 39 | NH00012 | bond paper | 0.04*1M | |
| 40 | NI00014 | membrane | 0.035*1M | |
| 41 | ND00227 | sponge | S0721B_NYLON NET D35 | |
| 42 | NI01990 | PU VEHICLE MODULE | ϕ 91*37_V1.0 | |
| 43 | MH01166 | fixed bolt | OEX ϕ 6*58.8_V1.0 | |
| 44 | NA00296 | PE bag | 0.05t*1100*1300mm | |
| 45 | NI03310 | cushion | 3t*32.8*34.5 black_V1.0 | |
| 46 | HC00684 | connector | CB-8MC 8P male socket | |
| 47 | MG00327 | screw | M3*10*0.5PH | |
| 48 | NI03229 | Sub-inner shell | 3t*430.5*214.5*288.5-OEX_V1.1 | |
| 49 | NI03230 | Sub-inner shell | ϕ 162*333-OEX_V1.1 | |
| 50 | MI02420 | fixed board | OEX 1.2t*26*12_V1.0 | |
| 51 | MJ00063 | iron board | 1.2*2135*1220 24.54kg | |
| 52 | NC00110 | washer | ϕ 4* ϕ 6.3*1 | |
| 53 | NC00014 | black foil white board | 0.65M*60M*1t | |
| 54 | MI02422 | fixed board | OEX 1.5t*175*140_V1.0 | |
| 55 | MI02421 | fixed board | OEX 1.5t*175*140_V1.1 | |
| 56 | MJ00088 | single light board | 1.5*2135*1220 30.67kg | |
| 57 | MI02424 | fixed bracket | OEX 1.0t*59*40*24.8_V1.0 | |
| 58 | MI02423 | fixed bracket | OEX 1.0t*59*40*24.8_V1.2 | |
| 59 | MJ00061 | iron board | 1*2135*1220 20.45kg | |
| 60 | HJ00006 | desiccant | 30g | |
| 61 | HA00861 | power cord Europe 3P | LT-312+LT-501 | |
| 62 | HA03701 | cable | YLI-K8P 2000mm OD: ϕ 6mm black | |
| 63 | HA01710 | MIC wire | ϕ 6*15 ruler 20/0.12*1C+30/0.12 | |
| 64 | HC00038 | MIC plug | ϕ 6.3(metal) | |
| 65 | MJ00764 | solder plate | OEX ϕ 17* ϕ 21*29_V1.0 | |
| 66 | MJ01185 | tinplate | 0.33t*700*910mm 1.6kg | |
| 67 | NI03294 | plastic foot | 8t*75.7*23_V1.0 | |
| 68 | ND00463 | dustproof cloth | 0.2t*1000*440 black_V1.0 | |
| 69 | ND00464 | Carpet cloth | 1000*440*50t white_V1.0 | |
| 70 | MI02344 | holder | ϕ 126*610 F8_V1.0 | |
| 71 | HA03610 | single terminal wiring | 670mm UL1015 18AWG | |
| 72 | HA03612 | wire | 2P 800mm UL1185 26AWG red | |
| 73 | HA03615 | wire | 3P 800mm UL1185 26AWG blue | |

| No. | Part No. | Descriptions | Specification | Remark |
|-----|----------|------------------------|---|--------|
| 74 | ND00459 | EV foam | OEX 2.0t*380*10_V1.0 | |
| 75 | ND00460 | EV foam | OEX 2.0t*162*10_V1.0 | |
| 76 | MG00387 | screw | M3*20 | |
| 77 | HK05109 | PC board | OEX600_230V | |
| 78 | MI02615 | fixed bracket | OEX900 230V/50Hz_V1.0 | |
| 79 | MI02428 | fixed bracket | OEX 1.0t*111*59(POWER)_V1.0 | |
| 80 | MI02427 | fixed bracket | OEX 1.0t*111*59(POWER)_V1.1 | |
| 81 | MJ00058 | single light board | 1*2135*1220 20.45kg | |
| 82 | MI00316 | connect terminal | PFM-15SA | |
| 83 | MJ00747 | single light board | 0.8t*21.6mm*100M 22.5kg | |
| 84 | HA03609 | wire | 600mm UL1015 18AWG | |
| 85 | HI00022 | power switch | 4p black frame red key | |
| 86 | HC00331 | AC socket | RF-2004 | |
| 87 | HA01253 | single terminal wiring | 150 white (PC250 .PC187) | |
| 88 | HD00019 | glass tube fuse | 4A 250V ϕ 5.2*20mm CSA/S/UL/VDE | |
| 89 | HK04729 | Fix lab combination | OEX600 | |
| 90 | HK04698 | PC board | P-OEX600-LINK | |
| 91 | HB01440 | PCB | OEX600-LINK_VER041022 | |
| 92 | HC00324 | connect terminal | 6.5m/m (PC250) | |
| 93 | HC00098 | MIC jack | JY-6313-01-020 | |
| 94 | AC00002 | solder wire | 63/37% | |
| 95 | MI02620 | fixed bracket | OEX600_V1.0 | |
| 96 | MI02432 | fixed bracket | OEX 1.0t*111*59(ϕ 12)_V1.0 | |
| 97 | MI02431 | fixed bracket | OEX 1.0t*111*59(ϕ 12)_V1.0 | |
| 98 | MJ00058 | single light board | 1*2135*1220 20.45kg | |
| 99 | ME00056 | MIC jack | LJ-648 | |
| 100 | NI00389 | plastic washer | ϕ 12* ϕ 16*0.5 | |
| 101 | NI00375 | film | 45*60.5*0.5mm | |
| 102 | HK04728 | speaker module | OEX600 right | |
| 103 | NI03233 | plastic panel | 6.5inch 722.9*223.6*99.8-OEX right_V1.1 | |
| 104 | NI03235 | rear cover | 6.5inch 722.6*223*208.5-OEX right_V1.1 | |
| 105 | MG00042 | screw | M3*10 | |
| 106 | MG00063 | screw | M3*12 | |
| 107 | MI02419 | fixed board | OEX 1.5t* ϕ 80*7(ϕ 9.5)_V1.0 | |
| 108 | MI02418 | fixed board | OEX 1.5t* ϕ 80*7(ϕ 9.5)_V1.0 | |
| 109 | MJ00069 | iron board | 1.5*2135*1220 30.67kg | |
| 110 | MD00590 | iron net | OEX 0.8t*575*195_V1.1 | |

| No. | Part No. | Descriptions | Specification | Remark |
|-----|----------|-----------------------------|----------------------------------|--------|
| 111 | MD00589 | iron net | OEX 0.8t*575*195_V1.1 | |
| 112 | MD00585 | iron net | 0.8t*620*240_V1.0 | |
| 113 | HK04763 | speaker | 6.5inch 35W 8Ω OEX600 | |
| 114 | MH01736 | T type middle pillar | H0381A_PN 25/380.6 | |
| 115 | MH01737 | washer | I0360A_PS 25/380.6 Z | |
| 116 | MH01738 | magnet | G0325A_D86*32*15 | |
| 117 | MI02501 | holder | L05400B_CR 165B/ZN 42mm | |
| 118 | HC00523 | terminal | M0051B_PT 5.1 | |
| 119 | NI02904 | terminal block | 30*9.5*4t black_V1.0 | |
| 120 | HC00495 | connect terminal | 0.8*13*16.3mm | |
| 121 | HC00496 | connect terminal | 0.8*13*16.3mm | |
| 122 | HG00156 | voice coil | A0XXX0A_BP 25-25-180/11-6 | |
| 123 | ND00429 | spider | D03720A_CT 25-98/3.5 C5_V1.0 | |
| 124 | NH00329 | cone | B04340B_CN 165.25 G Z1 50HZ | |
| 125 | NH00260 | cover | E0302A_CP 28/C | |
| 126 | NH00330 | cushion | C0XXXXA_GR 165/4+2 | |
| 127 | HA02439 | strand | ATA4*3YKA42W(12thige)*55mm | |
| 128 | HA02523 | strand | ATA4*3YKA42W*1M | |
| 129 | MH01110 | rivet | M0500A_OU-30 | |
| 130 | NE13731 | label | OEX 600/900 ALTO_V1.0 | |
| 131 | NI00014 | membrane | 0.035*1M | |
| 132 | NH00012 | bond paper | 0.04*1M | |
| 133 | NI02728 | rubber foot | φ 29.5*14 black | |
| 134 | NI02374 | fixed board | 70*135*10 432C | |
| 135 | HG00081 | speaker | PA-D597 P-AUDIO 8Ω | |
| 136 | MG00491 | screw | M4*35 | |
| 137 | MH01160 | handle | OEX φ 70*96_V1.0 | |
| 138 | HA03413 | wire | 160mm UL1015 18AWG | |
| 139 | HA02320 | single terminal wiring | 800mm UL1015 18AWG | |
| 140 | HA03616 | wire | 550/300mm UL1015 18AWG red/black | |
| 141 | HK04741 | PC board | P-OEX600/900_XOVER | |
| 142 | HB01457 | PCB | OEX600/900-XOVER_VER041203 | |
| 143 | CN00135 | crossover inductance | 0.75mH(φ 1.0mm R10*30) | L1 |
| 144 | CN00136 | crossover inductance | 0.3mH(φ 0.8mm φ 10mm) | L2 |
| 145 | CF00100 | metal-film capacitor MFA | 15uF/150V 10% | C1 |
| 146 | CF00107 | metal-film capacitor MEF | 2.2uF/100V 10% | C2 |
| 147 | HA01919 | jump | 5mm | PTC1 |

| No. | Part No. | Descriptions | Specification | Remark |
|-----|----------|-------------------------------|--------------------------------|-------------------|
| 148 | HA02249 | wire | ϕ 0.6 | |
| 149 | RA00998 | chassis bracket 20W | 1.5 Ω SQY type | R2 |
| 150 | HA01756 | P.V.C single wave wiredUL1015 | 80 black | DS2 |
| 151 | RA00989 | chassis bracket 20W | 15 Ω SQY type | R3 |
| 152 | RA00995 | chassis bracket 20W | 39 Ω SQY type | R4 |
| 153 | RA00993 | chassis bracket 20W | 3.3 Ω SQY type | R1 |
| 154 | HH00036 | lamp | SK3/CWT 12.8V 2.1A | DS1 |
| 155 | RG00012 | over current protector | 0.5A 60V MF-R050 | PTC2 |
| 156 | HC00324 | connect terminal | 6.5m/m (PC250) | P1,P2,P3,P4,P5,P6 |
| 157 | NI02590 | cable tie | YJ-203V0 UL94V-0 | |
| 158 | AC00002 | solder wire | 63/37% | |
| 159 | ND00462 | dustproof cloth | 0.2t*550*220 black_V1.0 | |
| 160 | ND00465 | Carpet cloth | 550*220*50t white_V1.0 | |
| 161 | MG00579 | screw | M5*20 | |
| 162 | MG00454 | screw | M4*20 | |
| 163 | ND00231 | sponge | 15*50*50mm | |
| 164 | HC00371 | MIC jack | SCJ-0658-1-Y | |
| 165 | ME00060 | MIC jack | JY-6351G-02-250 | |
| 166 | MF00061 | MIC jack | JY-6351G-02-250 | |
| 167 | MG00031 | screw | M4*12 | |
| 168 | NI03311 | cushion | 1.5t*28.8*12 black_V1.0 | |
| 169 | MG00536 | screw | M4*20_V1.0 | |
| 170 | NI03412 | rubber coil | ϕ 1.5*1756 black_V1.0 | |
| 171 | NI02031 | fixed board-POM | OEX 19.8*18.972*11.5_V1.1 | |
| 172 | MK00082 | spring | ϕ 2.7*14.5_V1.0 | |
| 173 | HK04726 | heat-sink module | OEX600 | |
| 174 | MG00027 | screw | M3*12 | |
| 175 | MF00037 | washer | ϕ 3.2* ϕ 5.5*1t | |
| 176 | MF00014 | washer | ϕ 3* ϕ 6.5*0.5t | |
| 177 | HA01984 | single terminal wiring | 115mm | |
| 178 | MG00020 | screw | M3*8 | |
| 179 | HA02520 | single terminal wiring | 750mm UL1015 18AWG | |
| 180 | HA02319 | single terminal wiring | 600mm UL1015 18AWG brown/black | |
| 181 | HA02815 | single terminal wiring | 800mm UL1015 18AWG | |
| 182 | MA00096 | panel | OEX 1.5t*400*162_V1.0 | |
| 183 | MA00087 | panel | OEX 1.5t*400*162_V1.1 | |
| 184 | MJ00088 | single light board | 1.5*2135*1220 30.67kg | |

| No. | Part No. | Descriptions | Specification | Remark |
|-----|----------|---------------------------|-------------------------------------|------------------------|
| 185 | MI02456 | heat-sink | 162*40*285.5 OEX 600_V1.0 | |
| 186 | MI02455 | heat sink | 162*40*285.5 OEX 600_V1.0 | |
| 187 | MI02457 | heat sink | 162*40*4070 ±5 23.729kg_V1.0 | |
| 188 | HK04703 | PC board | P-OEX600-AMP | |
| 189 | HB01437 | PCB | OEX600-AMP_VER041022 | |
| 190 | HC00076 | connector(male) | 2P 2.5mm 180° | CON1 |
| 191 | HC00324 | connect terminal | 6.5m/m (PC250) | T1,T2,T3,T4,T10 |
| 192 | HA01921 | jump | 7mm | J1,J13 |
| 193 | HA02249 | wire | φ 0.6 | |
| 194 | CF00035 | metal-film capacitor MPX | 0.1uF/275V | C10 |
| 195 | CB00050 | electrolytic capacitor | 100uF/50V φ 8*11mm | C7,C13,C14,C15 |
| 196 | CF00030 | metal-film capacitor MSC | 0.1uF/63V 5% CASE01 | C3,C5,C4,C6 |
| 197 | RA00651 | fixed resistor 1/8W | 10KΩ M type | R1,R2,R3,R6,R7,R8 |
| 198 | CA00003 | ceramic capacitor | 10PF NPO | C8,C9 |
| 199 | CB00185 | electrolytic capacitor | 10uF/63V φ 5*11mm | C16,C17 |
| 200 | CB00095 | electrolytic capacitor | 6800uF/50V φ 25*40mm | C11,C12 |
| 201 | RA00639 | fixed resistor 1/8W | 1.0KΩ M type | R11 |
| 202 | RA00665 | fixed resistor 1/8W | 220KΩ M type | R9 |
| 203 | CB00056 | electrolytic capacitor | 220uF/25V φ 8*11mm | C18 |
| 204 | RA01107 | fixed resistor 1/8W | 470KΩ M type | R13 |
| 205 | RA00636 | fixed resistor 1/8W | 560Ω M type | R16,R15 |
| 206 | CB00039 | electrolytic capacitor | 47uF/25V φ 5*11mm | C1 |
| 207 | SA00120 | zener diode | 1/2W 8.2V 9A2 | Z1 |
| 208 | SB00059 | transistor | BC327-25 | Q1 |
| 209 | SD00035 | integrated circuit | LM3886TF(NS) | U1,U2 |
| 210 | HK02231 | Photodiode | P-photosensitive resistance φ 5LLED | D1 |
| 211 | RH00020 | photosensitive resistance | VT90N1 | |
| 212 | SA00201 | L.E.D | φ 5 red(LI3330/A) | |
| 213 | NI02779 | sleeve | φ 9*30mm | |
| 214 | NI00274 | sleeve | φ 9*1000mm | |
| 215 | SA00009 | bridge rectifier | BU10-04 10A/400V | BR1 |
| 216 | CA00092 | ceramic capacitor | 560PF Y5E | C19 |
| 217 | AC00002 | solder wire | 63/37% | |
| 218 | HK04691 | PC board | P-OEX600-AMP-1 | |
| 219 | HB01437 | PCB | OEX600-AMP_VER041022 | |
| 220 | HC00324 | connect terminal | 6.5m/m (PC250) | T9,T10,T11,T1,T2,T3,T4 |
| 221 | HA01921 | jump | 7mm | J1,J2 |

| No. | Part No. | Descriptions | Specification | Remark |
|-----|----------|---------------------------|---|----------------------|
| 222 | HA02249 | wire | φ 0.6 | |
| 223 | CF00035 | metal-film capacitor MPX | 0.1uF/275V | C10 |
| 224 | CB00050 | electrolytic capacitor | 100uF/50V φ 8*11mm | C7,C13,C14,C15 |
| 225 | CF00030 | metal-film capacitor MSC | 0.1uF/63V 5% CASE01 | C3,C4,C5,C6 |
| 226 | RA00651 | fixed resistor 1/8W | 10K Ω M type | R1,R2,R3,R4,R5,R7,R8 |
| 227 | CA00003 | ceramic capacitor | 10PF NPO | C8,C9 |
| 228 | CB00185 | electrolytic capacitor | 10uF/63V φ 5*11mm | C16,C17 |
| 229 | CB00095 | electrolytic capacitor | 6800uF/50V φ 25*40mm | C11,C12 |
| 230 | RA00639 | fixed resistor 1/8W | 1.0K Ω M type | R11,R12 |
| 231 | RA00665 | fixed resistor 1/8W | 220K Ω M type | R9,R10 |
| 232 | CB00056 | electrolytic capacitor | 220uF/25V φ 8*11mm | C18 |
| 233 | RA01107 | fixed resistor 1/8W | 470K Ω M type | R13,R14 |
| 234 | RA00636 | fixed resistor 1/8W | 560 Ω M type | R15,R16 |
| 235 | CB00039 | electrolytic capacitor | 47uF/25V φ 5*11mm | C1,C2 |
| 236 | SA00120 | zener diode | 1/2W 8.2V 9A2 | Z1,Z2 |
| 237 | SB00059 | transistor | BC327-25 | Q1,Q2 |
| 238 | HC00077 | connector(male) | 3P 2.5mm 180° | CON1 |
| 239 | SD00035 | integrated circuit | LM3886TF(NS) | U1,U2 |
| 240 | CA00092 | ceramic capacitor | 560PF Y5E | C19,C20 |
| 241 | SA00009 | bridge rectifier | BU10-04 10A/400V | BR1 |
| 242 | HK02231 | Photodiode | P-photosensitive resistance φ 5LLED | D1,D2 |
| 243 | RH00020 | photosensitive resistance | VT90N1 | |
| 244 | SA00201 | L.E.D | φ 5 red(LI3330/A) | |
| 245 | NI02779 | sleeve | φ 9*30mm | |
| 246 | NI00274 | sleeve | φ 9*1000mm | |
| 247 | AC00002 | solder wire | 63/37% | |
| 248 | NC00128 | washer | 1.6* φ 6.8* φ 3.5 red | |
| 249 | NC00041 | insulation board | 1.6t*0.65M*70M | |
| 250 | MF00034 | washer | φ 3* φ 5.5*0.5t | |
| 251 | HK04835 | faceplate | OEX600-MX ALTO | |
| 252 | MA03631 | panel | OEX600 ALTO_V1.1 | |
| 253 | MA00017 | panel | OEX600 1.0t*401.5*237.5 | |
| 254 | MA00111 | panel | OEX600 1.0t*401.5*237.5_V1.3 | |
| 255 | MJ00058 | single light board | 1*2135*1220 20.45kg | |
| 256 | ME00097 | screw pillar | M3*10*0.5PH | |
| 257 | MI02425 | rear cover | OEX 1.0t*369*220*31_V 1.0 | |
| 258 | MJ00061 | iron board | 1*2135*1220 20.45kg | |

| No. | Part No. | Descriptions | Specification | Remark |
|-----|----------|------------------------------|---|---|
| 259 | MI02433 | handle | OEX ϕ 6*63*26_V1.0 | |
| 260 | NI02836 | acrylic panel | 10*7*3mm AMX-140 | |
| 261 | MG00041 | screw | M3*6 | |
| 262 | MG00326 | screw | 3*4 | |
| 263 | MG00061 | screw | M3*10 | |
| 264 | MG00289 | screw | M4*12 | |
| 265 | MF00037 | washer | ϕ 3.2* ϕ 5.5*1t | |
| 266 | MF00038 | washer | ϕ 4* ϕ 7*1t | |
| 267 | ME00174 | nut | M3*4*0.5PH_V1.0 | |
| 268 | MF00030 | washer | ϕ 3.5* ϕ 8*0.8t | |
| 269 | ME00060 | MIC jack | JY-6351G-02-250 | |
| 270 | MF00061 | MIC jack | JY-6351G-02-250 | |
| 271 | NI02957 | knob | 9.8*5.5*11.2mm black_V1.0 | |
| 272 | NI01862 | key | 5.5*5.5*14.5 | |
| 273 | NI02837 | knob | ϕ 35*11mm 534C | |
| 274 | NI01863 | key | ϕ 5.5*W10*7.5 | |
| 275 | NI02083 | knob | ϕ 10.5*18mm | |
| 276 | NI02081 | knob | ϕ 10.5*18mm | |
| 277 | NI02082 | knob | ϕ 10.5*18mm | |
| 278 | NI02633 | knob | ϕ 10.5*18 | |
| 279 | NI00826 | knob | ϕ 12*18mm double color | |
| 280 | NI02817 | knob | ϕ 10.5*18mm | |
| 281 | NI02386 | knob | ϕ 14*13mm | |
| 282 | HK04827 | PC board | P-OEX600MX-CTRL-DIP | |
| 283 | CB00073 | electrolytic capacitor | 1000uF/35V ϕ 13*20mm | C42 |
| 284 | HA02446 | wire | 14P(male)-14P(female) 60mm UL1007 28AWG | CN1,CN2 |
| 285 | RA00119 | fixed resistor 1/2W | 220 Ω M type | R35,R42 |
| 286 | RA00955 | metal-oxide-film resistor 5W | 82 Ω P type | R108 |
| 287 | RC00358 | potentiometer | B50K Ω -RD09F113A223-50K2BT(SAS1);30F-C | VR2,VR3,VR4,VR10,VR12,VR18, VR19,VR20,VR26,VR27,VR28,VR11 |
| 288 | RC00360 | potentiometer | B50K Ω RD12L12CA23A-50K3BT*2(SAS1);30F-C | VR34,VR35,VR36 |
| 289 | RC00465 | potentiometer | B5K Ω RD09F113A225-5K2BT(SAS1);30F-C | VR7,VR15,VR23,VR31,VR39 |
| 290 | HC00077 | connector(male) | 3P 2.5mm 180° | CN3 |
| 291 | SA00052 | L.E.D | ϕ 3 round(green)long foot 26 | LD7,LD10,LD11,LD12,LD13,LD14, LD15,LD16,LD17,LD18,LD19,LD22 ,LD23,LD24,LD25,LD26,LD27, LD28,LD29,LD30,LD31 |
| 292 | CB00061 | electrolytic capacitor | 220uF/100V ϕ 13*26mm | C49 |
| 293 | HC00473 | connector | 2.45mm 180° 2*8P B25-2*8BG1(B)H=5mm | CN6 |

| No. | Part No. | Descriptions | Specification | Remark |
|-----|----------|----------------------------|---------------------------------------|---|
| 294 | SD00032 | integrated circuit | LM317T | U8,U9,U20 |
| 295 | SD00033 | integrated circuit | LM337SP(1.5A)(TO-220) | U18 |
| 296 | HI00236 | push-button switch | 2-stage 6P PS-9226A(SELF-LOCK) | SW9,SW10 |
| 297 | HI00238 | push-button switch | 2 stage 6P PS-9226A(NON-LOCK) | SW11 |
| 298 | SA00053 | L.E.D | φ 3 round(red)long foot 26mm | LD1,LD21,LD33 |
| 299 | SA00167 | bridge rectifier | 2A W2-04 | D17,D18 |
| 300 | HI00195 | rotary switch | SDB161PVB15.5F-1-4-16-16PC | EN2 |
| 338 | SE00011 | SMD rectifier diode | RLS4148 0.5A (LL-34) | D2,D3,D4,D5,D6,D7 |
| 339 | SF00051 | transistor | SST176(S6)(SOT-23)/(VISHAY) | Q1,Q2 |
| 340 | RD00003 | SMD fixed resistor 1/8W | 10Ω ±5% 0805 | R1,R9,R10,R11 |
| 341 | RD00032 | SMD fixed resistor 1/8W | 10KΩ ±5% 0805 | R2,R3,R12,R13,R19,R20,R22,R25, R29 |
| 342 | RD00042 | SMD fixed resistor 1/8W | 33KΩ ±5% 0805 | R4,R14 |
| 343 | RD00018 | SMD fixed resistor 1/8W | 1.0KΩ ±5% 0805 | R5 |
| 344 | RD00030 | SMD fixed resistor 1/8W | 6.8KΩ ±5% 0805 | R6,R16,R27 |
| 345 | RD00034 | SMD fixed resistor 1/8W | 15KΩ ±5% 0805 | R7,R17 |
| 346 | RD00056 | SMD fixed resistor 1/8W | 1.0MΩ ±5% 0805 | R15,R26,R34 |
| 347 | RD00023 | SMD fixed resistor 1/8W | 2.2KΩ ±5% 0805 | R21,R31,R32 |
| 348 | RD00049 | SMD fixed resistor 1/8W | 100KΩ ±5% 0805 | R23 |
| 349 | RD00267 | SMD fixed resistor 1/8W | 820KΩ ±5% 0805 | R24 |
| 350 | RD00057 | SMD fixed resistor 1/8W | 2.2MΩ ±5% 0805 | R28 |
| 351 | RD00009 | SMD fixed resistor 1/8W | 220Ω ±5% 0805 | R30 |
| 352 | RD00038 | SMD fixed resistor 1/8W | 22KΩ ±5% 0805 | R33 |
| 353 | SG00200 | SMD integrated circuit | NJM4580V-TE1/(JRC) | U1,U2 |
| 354 | SG00306 | SMD integrated circuit | LM393DR(TI)/(MEXICO) | U3 |
| 355 | SG00094 | SMD integrated circuit | NE555DT/(ST) | U4 |
| 356 | SG00068 | SMD integrated circuit | 74HC14DT(SO-14)/(PHI) | U5 |
| 357 | SG00164 | SMD integrated circuit | 74HC109D | U6 |
| 358 | AE00221 | tin soldering paste | SJ-617 | |
| 359 | AC00002 | solder wire | 63/37% | |
| 360 | HK04833 | PC board | P-313123-DIP(OEX600) | |
| 361 | SC00004 | crystal oscillator | 16.00MHZ | XT1 |
| 362 | HC00484 | connector | 2.54 180° 2*8P(gold-plated) 13.5/19mm | CN2 |
| 363 | SG00325 | SMD integrated circuit | AT27LV010A-90JC/OEX600 CE:E1880 | |
| 364 | SG00139 | SMD integrated circuit | AT27LV010A-90JC | |
| 365 | HK03894 | PC board | P-313123-SMD(L-8) | |
| 366 | HB00895 | PCB | 313123/2(1*6) | |
| 367 | CI00049 | SMD ceramic capacitor 0603 | 15PF/50V NPO ±5% | C8,C9 |
| 368 | CI00075 | SMD ceramic capacitor 0603 | 0.1uF/50V Y5V +80,-20% | C17,C15,C18,C6,C10,C22,C20, C13,C14,C1,C3,C4,C11 |
| 369 | RD00061 | SMD fixed resistor 1/10W | 10Ω ±5% 0603 | R22 |
| 370 | RD00068 | SMD fixed resistor 1/10W | 100Ω ±5% 0603 | R12,R14,R7,R8,R34,R17,R13,R33 |
| 371 | RD00073 | SMD fixed resistor 1/10W | 220Ω ±5% 0603 | R3 |

| No. | Part No. | Descriptions | Specification | Remark |
|-----|----------|-------------------------------|---|---|
| 372 | RD00085 | SMD fixed resistor 1/10W | 1.5K Ω \pm 5% 0603 | R16,R15,R21,R20,R4,R19,R10, R18,R9,R5 |
| 373 | RD00088 | SMD fixed resistor 1/10W | 2.2K Ω \pm 5% 0603 | R28,R27,R23,R24,R29,R30,R25, R26 |
| 374 | RD00101 | SMD fixed resistor 1/10W | 10K Ω \pm 5% 0603 | R32,R31,R1 |
| 375 | RD00125 | SMD fixed resistor 1/10W | 1.0M Ω \pm 5% 0603 | R2 |
| 301 | RC00359 | potentiometer | W50K Ω RD09F113A224-50K4BT(SAS1);30F-C | VR5,VR6,VR8,VR13,VR14,VR16, VR21,VR22,VR24,VR29,VR30, VR32,VR37,VR38,VR52 |
| 302 | RC00361 | potentiometer | W50K Ω RD12L12CA60B-50K4BT*2(SAS1);30F-C | VR40,VR48,VR49,VR50,VR53 |
| 303 | MF00060 | washer | ϕ 7* ϕ 12*0.5t | |
| 304 | ME00052 | nut | ϕ 7 | |
| 305 | RC00369 | potentiometer(A10K-41 stage) | W50K Ω RV16A01-30-25F-W50K-3F97 | VR51 |
| 306 | SA00054 | L.E.D | 3m/m round(yellow)long foot 26 | LD20,LD32 |
| 307 | NI03210 | spacer support | AMX 140_V1.0 | LD10-33 |
| 308 | NI01782 | LED spacer support | LEDS-11 11mm | LD1 |
| 309 | NI01776 | LED spacer support | LED-3 3mm | LD7 |
| 310 | HA00033 | wire | 250mm red L3R3 | |
| 311 | MI02485 | Heat sink | OEX 600 1.5t*99*121.5_V1.2 | |
| 312 | MJ00092 | AL plate | 1.5*2000*1000 8.16kg | |
| 313 | ME00134 | iron pillar | M3*2.8*0.5PH | |
| 314 | ME00180 | iron pillar | 6.35* ϕ 3.5*6_V1.0 | |
| 315 | NI02620 | insulation board | 1*86.5*53 L-8 | |
| 316 | NC00010 | insulation board | 0.65M*60M*1t | |
| 317 | MG00041 | screw | M3*6 | |
| 318 | MG00027 | screw | M3*12 | |
| 319 | MG00304 | copper pillar | M3*14*0.5PH | |
| 320 | ME00174 | nut | M3*4*0.5PH_V1.0 | |
| 321 | MF00037 | washer | ϕ 3.2* ϕ 5.5*1t | |
| 322 | NI02249 | plastic washer | TW-1(TO-220) | |
| 323 | NC00005 | silicone insulator | TO-220 square type | |
| 324 | ND00087 | EV foam | 18*40*2 | |
| 325 | HK00669 | PC board | P-DIGIT_EFFECTD_REV04-DIP(RX700) | |
| 326 | HC00618 | connector | 2.54 90° 12P 4.0/13.31mm | P1 |
| 327 | HK00668 | PC board | P-DIGIT_EFFECTD_REV04-SMD | |
| 328 | HB01092 | PCB | DIGIT_EFFECT_REV04 | |
| 329 | CI00026 | SMD ceramic capacitor 0805 | 0.0033uF/50V X7R \pm 10% | C1,C6 |
| 330 | CJ00005 | SMD AL electrolytic capacitor | 10uF/16V CASE4 ϕ | C2,C5,C9 |
| 331 | CI00013 | SMD ceramic capacitor 0805 | 56PF/50V NPO | C3,C10 |
| 332 | CI00100 | SMD ceramic capacitor 0805 | 0.1uF/50V X7R \pm 10% | C4,C7,C8,C12,C17,C18,C19 |

| No. | Part No. | Descriptions | Specification | Remark |
|-----|----------|-------------------------------|---------------------------------------|---|
| 333 | CI00146 | SMD ceramic capacitor 0805 | 0.22uF/50V X7R ±10% | C11 |
| 334 | CI00007 | SMD ceramic capacitor 0805 | 22PF/50V NPO | C15,C13 |
| 335 | CI00145 | SMD ceramic capacitor 0805 | 0.0015uF/50V X7R ±10% | C14 |
| 336 | CJ00002 | SMD AL electrolytic capacitor | 1uF/50V CASE4 φ | C16 |
| 337 | SE00016 | SMD zener diode | 1/2W 5.1V(RLZ5.1B) LL-34 | D1 |
| 338 | SE00011 | SMD rectifier diode | RLS4148 0.5A (LL-34) | D2,D3,D4,D5,D6,D7 |
| 339 | SF00051 | transistor | SST176(S6)(SOT-23)/(VISHAY) | Q1,Q2 |
| 340 | RD00003 | SMD fixed resistor 1/8W | 10 Ω ±5% 0805 | R1,R9,R10,R11 |
| 341 | RD00032 | SMD fixed resistor 1/8W | 10K Ω ±5% 0805 | R2,R3,R12,R13,R19,R20,R22,R25, R29 |
| 342 | RD00042 | SMD fixed resistor 1/8W | 33K Ω ±5% 0805 | R4,R14 |
| 343 | RD00018 | SMD fixed resistor 1/8W | 1.0K Ω ±5% 0805 | R5 |
| 344 | RD00030 | SMD fixed resistor 1/8W | 6.8K Ω ±5% 0805 | R6,R16,R27 |
| 345 | RD00034 | SMD fixed resistor 1/8W | 15K Ω ±5% 0805 | R7,R17 |
| 346 | RD00056 | SMD fixed resistor 1/8W | 1.0M Ω ±5% 0805 | R15,R26,R34 |
| 347 | RD00023 | SMD fixed resistor 1/8W | 2.2K Ω ±5% 0805 | R21,R31,R32 |
| 348 | RD00049 | SMD fixed resistor 1/8W | 100K Ω ±5% 0805 | R23 |
| 349 | RD00267 | SMD fixed resistor 1/8W | 820K Ω ±5% 0805 | R24 |
| 350 | RD00057 | SMD fixed resistor 1/8W | 2.2M Ω ±5% 0805 | R28 |
| 351 | RD00009 | SMD fixed resistor 1/8W | 220 Ω ±5% 0805 | R30 |
| 352 | RD00038 | SMD fixed resistor 1/8W | 22K Ω ±5% 0805 | R33 |
| 353 | SG00200 | SMD integrated circuit | NJM4580V-TE1/(JRC) | U1,U2 |
| 354 | SG00306 | SMD integrated circuit | LM393DR(TI)/(MEXICO) | U3 |
| 355 | SG00094 | SMD integrated circuit | NE555DT/(ST) | U4 |
| 356 | SG00068 | SMD integrated circuit | 74HC14DT(SO-14)/(PHI) | U5 |
| 357 | SG00164 | SMD integrated circuit | 74HC109D | U6 |
| 358 | AE00221 | tin soldering paste | SJ-617 | |
| 359 | AC00002 | solder wire | 63/37% | |
| 360 | HK04833 | PC board | P-313123-DIP(OEX600) | |
| 361 | SC00004 | crystal oscillator | 16.00MHZ | XT1 |
| 362 | HC00484 | connector | 2.54 180° 2*8P(gold-plated) 13.5/19mm | CN2 |
| 363 | SG00325 | SMD integrated circuit | AT27LV010A-90JC/OEX600 CE:E1880 | |
| 364 | SG00139 | SMD integrated circuit | AT27LV010A-90JC | |
| 365 | HK03894 | PC board | P-313123-SMD(L-8) | |
| 366 | HB00895 | PCB | 313123/2(1*6) | |
| 367 | CI00049 | SMD ceramic capacitor 0603 | 15PF/50V NPO ±5% | C8,C9 |
| 368 | CI00075 | SMD ceramic capacitor 0603 | 0.1uF/50V Y5V +80,-20% | C17,C15,C18,C6,C10,C22,C20, C13,C14,C1,C3,C4,C11 |
| 369 | RD00061 | SMD fixed resistor 1/10W | 10 Ω ±5% 0603 | R22 |

| No. | Part No. | Descriptions | Specification | Remark |
|-----|----------|-----------------------------|--------------------------|---|
| 370 | RD00068 | SMD fixed resistor 1/10W | 100 Ω ±5% 0603 | R12,R14,R7,R8,R34,R17,R13,R33 |
| 371 | RD00073 | SMD fixed resistor 1/10W | 220 Ω ±5% 0603 | R3 |
| 372 | RD00085 | SMD fixed resistor 1/10W | 1.5K Ω ±5% 0603 | R16,R15,R21,R20,R4,R19,R10, R18,R9,R5 |
| 373 | RD00088 | SMD fixed resistor 1/10W | 2.2K Ω ±5% 0603 | R28,R27,R23,R24,R29,R30,R25, R26 |
| 374 | RD00101 | SMD fixed resistor 1/10W | 10K Ω ±5% 0603 | R32,R31,R1 |
| 375 | RD00125 | SMD fixed resistor 1/10W | 1.0M Ω ±5% 0603 | R2 |
| 376 | RE00006 | SMD resistor networks 1/16W | 100 Ω*4 ±5% 8P 0603 | AR1,AR2 |
| 377 | SE00011 | SMD rectifier diode | RLS4148 0.5A (LL-34) | D1 |
| 378 | SG00068 | SMD integrated circuit | 74HC14DT(SO-14)/(PHI) | IC1 |
| 379 | SG00138 | SMD integrated circuit | AS4LC256K16EO-60JC | IC6 |
| 380 | SG00166 | SMD integrated circuit | TY-2 ALTO(GMCODE:105022) | IC3 |
| 381 | SG00147 | SMD integrated circuit | CHEF DSP(GMCODE:105022) | |
| 382 | SG00037 | SMD integrated circuit | LD1117DT33C(TO-252) | IC2 |
| 383 | HC00233 | IC socket (PCB) | PLCC32 (D03-32T.A.4) | IC4 |
| 384 | SG00016 | SMD integrated circuit | UDA1345TS (Philips) | IC5 |
| 385 | AE00221 | tin soldering paste | SJ-617 | |
| 386 | NE04154 | label | OEX600_V1.0 | |
| 387 | NH00035 | bond paper | 0.06*1M | |
| 388 | NI00017 | membrane | 0.055*1M | |
| 389 | AC00002 | solder wire | 63/37% | |
| 390 | CB00166 | electrolytic capacitor | 100uF/16V φ 6*5mm | C19,C12,C5,C2,C24,C16,C21,C25, C26,C28,C7 |
| 391 | HK04829 | PC board | P-OEX600MX-CTRL-AI | |
| 392 | RA00157 | fixed resistor 1/4W | 0.0 Ω | R31 |
| 393 | CF00140 | metal-film capacitor MSC | 0.1uF/63V 5% CASE01 | C40,C53 |
| 394 | CB00263 | electrolytic capacitor | 10uF /25V φ 4*7mm | C55,C57 |
| 395 | RA01260 | fixed resistor 1/4W | 120 Ω | R350,R353 |
| 396 | CF00138 | metal-film capacitor MSC | 0.012uF/63V ±5% CASE01 | C155,C156,C157,C158,C159,C160 ,C171,C172,C173,C174,C175, C176 |
| 397 | CF00136 | metal-film capacitor MSC | 0.018uF/63V 5% CASE01 | C131,C132,C133,C134,C135,C136 ,C163,C164,C165,C166,C167, C168 |
| 398 | SA00098 | rectifier diode | 1A/400V IN4004 | D19,C20 |
| 399 | CB00237 | electrolytic capacitor | 1.0uF/50V φ 5*11mm 2.5mm | C1 |
| 400 | CB00236 | electrolytic capacitor | 220uF/35V φ 10*12mm | C47 |
| 401 | CF00137 | metal-film capacitor MSC | 0.033uF/63V 5% CASE01 | C139,C140,C141,C142,C143,C144 ,C145,C146,C147,C148,C149, C150 |

| No. | Part No. | Descriptions | Specification | Remark |
|-----|----------|----------------------------|-----------------------------|--|
| 402 | CB00194 | electrolytic capacitor | 47uF/25V φ 5*11mm | C87,C88,C89,C90,C94,C95,C96, C97,C98,C101,C102,C103,C104, C105,C106,C107,C111,C112,C113, C114,C115,C116,C119,C120,C231, C232,C233,C234,C235,C236,C237 ,C238,C239,C240,C241,C242, C243,C244,C245,C247,C249,C250 ,C255,C256,C257,C258,C283, C284,C358,C359,C360,C361 |
| 403 | RA01234 | fixed resistor 1/4W | 4.7K Ω | R1 |
| 404 | HK04830 | PC board | P-OEX600MX-CTRL-SMD | |
| 405 | HB01473 | PCB | OEX600MX-CTRL_VER041213 | |
| 406 | CI00051 | SMD ceramic capacitor 0603 | 22PF/50V NPO \pm 5% | C179,C180,C181,C182,C183,C184 ,C185,C186,C187,C188,C189, C190,C221,C222,C223,C224,C225 ,C226,C259,C260,C263,C264, C269,C270,C356,C357 |
| 407 | CI00059 | SMD ceramic capacitor 0603 | 100PF/50V NPO \pm 5% | C265,C266,C267,C268 C2,C46,C50,C54,C56,C58,C63, C213,C214,C218,C219,C220,C295 ,C296,C297,C298,C299,C300, C301,C302,C303,C304,C305,C306 ,C307,C308,C309,C310,C311,C312 ,C315,C316,C317,C45 |
| 408 | CI00075 | SMD ceramic capacitor 0603 | 0.1uF/50V Y5V +80,-20% | JP1 |
| 409 | RD00002 | SMD fixed resistor 1/8W | 0.0 Ω \pm 5% 0805 | |
| 410 | RD00065 | SMD fixed resistor 1/10W | 47 Ω \pm 5% 0603 | R373,R374 |
| 411 | RD00069 | SMD fixed resistor 1/10W | 120 Ω \pm 5% 0603 | R355 |
| 412 | RD00073 | SMD fixed resistor 1/10W | 220 Ω \pm 5% 0603 | R48,R101,R104,R107,R110,R429, R430 |
| 413 | RD00076 | SMD fixed resistor 1/10W | 330 Ω \pm 5% 0603 | R359,R360 |
| 414 | RD00078 | SMD fixed resistor 1/10W | 470 Ω \pm 5% 0603 | R351,R352,R356,R357,R358 |
| 415 | RD00082 | SMD fixed resistor 1/10W | 820 Ω \pm 5% 0603 | R109,R252 |
| 416 | RD00087 | SMD fixed resistor 1/10W | 2.0K Ω \pm 5% 0603 | R364 |
| 417 | RD00089 | SMD fixed resistor 1/10W | 2.7K Ω \pm 5% 0603 | R103,R106 |
| 418 | RD00092 | SMD fixed resistor 1/10W | 3.9K Ω \pm 5% 0603 | R256,R257,R258,R259,R260,R261 ,R303,R307,R388,R389 |
| 419 | RD00093 | SMD fixed resistor 1/10W | 4.7K Ω \pm 5% 0603 | R9,R44,R77,R78,R79,R80,R81, R82 R99,R100,R178,R180,R286,R287, R290,R291,R294,R295,R299,R308 ,R309,R310,R311,R312,R313,R432 ,R296 |
| 420 | RD00094 | SMD fixed resistor 1/10W | 5.1K Ω \pm 5% 0603 | R300,R301,R365 |
| 421 | RD00095 | SMD fixed resistor 1/10W | 5.6K Ω \pm 5% 0603 | |
| 422 | RD00097 | SMD fixed resistor 1/10W | 6.8K Ω \pm 5% 0603 | R150,R151,R154,R155,R158,R159 ,R162,R166,R167,R168,R169, R163 |
| 423 | RD00098 | SMD fixed resistor 1/10W | 7.5K Ω \pm 5% 0603 | R344,R345 |
| 424 | RD00099 | SMD fixed resistor 1/10W | 8.2K Ω \pm 5% 0603 | R4,R94,R191,R302,R304 |
| 425 | RD00101 | SMD fixed resistor 1/10W | 10K Ω \pm 5% 0603 | R47,R55,R63,R71,R87,R92,R95, R96,R97,R98,R111,R319,R321, R340,R341,R427,R428 |
| 426 | RD00105 | SMD fixed resistor 1/10W | 22K Ω \pm 5% 0603 | R86,R88,R89,R90,R185,R236, R237,R238,R239,R240,R241,R244 ,R245,R366,R382 |
| 427 | RD00106 | SMD fixed resistor 1/10W | 27K Ω \pm 5% 0603 | R348,R349 |

| No. | Part No. | Descriptions | Specification | Remark |
|-----|----------|-----------------------------|---|---|
| 428 | RD00110 | SMD fixed resistor 1/10W | 43K Ω \pm 5% 0603 | R274,R275 |
| 429 | RD00112 | SMD fixed resistor 1/10W | 56K Ω \pm 5% 0603 | R318,R320,R367,R368 |
| 430 | RD00113 | SMD fixed resistor 1/10W | 62K Ω \pm 5% 0603 | R242,R243 |
| 431 | RD00116 | SMD fixed resistor 1/10W | 100K Ω \pm 5% 0603 | R26,R369,R370 |
| 432 | RD00119 | SMD fixed resistor 1/10W | 220K Ω \pm 5% 0603 | R113 |
| 433 | RD00125 | SMD fixed resistor 1/10W | 1.0M Ω \pm 5% 0603 | R220,R221,R222,R223,R224,R225 |
| 434 | RD00287 | SMD precise resistor 1/10W | 6.34K Ω \pm 1% 0603 | R305,R306 |
| 435 | RD00289 | SMD precise resistor 1/10W | 8.06K Ω \pm 1% 0603 | R284,R285,R288,R289,R292,R293, R297,R298 |
| 436 | RD00306 | SMD fixed resistor 1/10W | 20K Ω \pm 5% 0603 | R450,R451,R452,R454,R455,R453 |
| 437 | RD00346 | SMD fixed resistor 1/10W | 56 Ω \pm 5% 0603 | R354 |
| 438 | RD00347 | SMD fixed resistor 1/10W | 510 Ω \pm 5% 0603 | R361 |
| 439 | RD00348 | SMD fixed resistor 1/10W | 620 Ω \pm 5% 0603 | R362 |
| 440 | RD00349 | SMD fixed resistor 1/10W | 910 Ω \pm 5% 0603 | R196,R197,R198,R199,R200,R201, R202,R203,R204,R205,R206,R207 |
| 441 | RD00350 | SMD fixed resistor 1/10W | 1.1K Ω \pm 5% 0603 | R212,R213,R214,R215,R216,R217 |
| 442 | RD00351 | SMD fixed resistor 1/10W | 1.3K Ω \pm 5% 0603 | R137,R139,R141,R143,R145,R146 ,R363 |
| 443 | RD00352 | SMD fixed resistor 1/10W | 3.6K Ω \pm 5% 0603 | R338,R339 |
| 444 | RD00353 | SMD fixed resistor 1/10W | 36K Ω \pm 5% 0603 | R270,R271,R272,R273,R276,R277 ,R278,R279,R280,R281 |
| 445 | RD00368 | SMD precise resistor 1/10W | 16.5K Ω \pm 1% 0603 | R433,R434 |
| 446 | RD00424 | SMD fixed resistor 1/10W | 180K Ω \pm 5% 0603 | R102 |
| 447 | RE00011 | SMD resistor networks 1/16W | 680 Ω *4 \pm 5% 8P 0603 | AR2 |
| 448 | SE00008 | SMD rectifier diode | DA204K/T-146 | D2 |
| 449 | SE00011 | SMD rectifier diode | RLS4148 0.5A (LL-34) | D22,D23,D24,D25,D26,D30,D31, D32,D33 |
| 450 | SF00051 | transistor | SST176(S6)(SOT-23)/(VISHAY) | TR1,TR2 |
| 451 | SF00053 | transistor | MMBT3906(SOT-23)/(PHI) | TR13,TR14 |
| 452 | SG00032 | SMD integrated circuit | LM339DR/(TI) | U35,U36,U37,U38,U39,U40 |
| 453 | SG00122 | SMD integrated circuit | NJM4580M-TE3 | U9,U10,U11,U12,U16,U17,U21,U22 ,U23,U24,U25,U26,U27,U30 |
| 454 | AE00221 | tin soldering paste | SJ-617 | |
| 455 | CB00249 | electrolytic capacitor | 47uF/50V ϕ 6.3*11mm 2.5mm | C52 |
| 456 | CB00280 | electrolytic capacitor | 100uF/50V ϕ 8*11mm | C10 |
| 457 | CB00139 | electrolytic capacitor | 4.7uF/63V NP ϕ 6.3*11mm | |
| 458 | MJ00344 | solder plate | AMP | |
| 459 | CB00275 | electrolytic capacitor | 1200uF/35V \pm 10% ϕ 12.5*25mm 15mm | C41 |
| 460 | AC00002 | solder wire | 63/37% | |
| 461 | MJ00808 | fixed clip | WL3-32T | |
| 462 | NC00077 | washer | ϕ 3.17* ϕ 8.2*1 | |
| 463 | NC00010 | insulation board | 0.65M*60M*1t | |
| 464 | CB00186 | electrolytic capacitor | 33uF/100V ϕ 8*11.5mm | C43,C44 |

| No. | Part No. | Descriptions | Specification | Remark |
|-----|----------|----------------------------|-----------------------------------|---|
| 465 | CB00225 | electrolytic capacitor | 470uF/6.3V φ 6.3*11mm | C9,C59 |
| 466 | CB00137 | electrolytic capacitor | 2.2uF/100V φ 5*11mm | C51 |
| 467 | HK04828 | PC board | P-OEX600MX-INOUT-DIP | |
| 468 | RA00367 | fixed resistor 1/8W | 2.7K Ω M type | R138 |
| 469 | CB00217 | electrolytic capacitor | 470uF/50V φ 10*20mm | C96 |
| 470 | RA00382 | fixed resistor 1/8W | 6.8K Ω M type | R139 |
| 471 | HC00249 | connector(male) | 4P 2.0mm 90° | CN3 |
| 472 | HI00236 | push-button switch | 2-stage 6P PS-9226A(SELF-LOCK) | S1,S2,S3,S4,S5 |
| 473 | HC00403 | RCA jack | SCP6873NS3232T2 4P | J12 |
| 474 | HC00371 | MIC jack | SCJ-0658-1-Y | J2,J4,J6,J8,J10,J11,J13,J14,J15, J16,J17,J18,J19,J20,J21,J22,J23,J24 |
| 475 | HI00246 | slide switch | 2 stages 6P SS-22H23-G14(2P2T) | S6 |
| 476 | HC00126 | balance MIC jack | JY-5042-030G female plug 180° | J1,J3,J5,J7,J9 |
| 477 | HC00667 | connector(male) | 14P 2.0mm 90° | CN1,CN2 |
| 478 | HK04831 | PC board | P-OEX600MX-INOUT-AI | |
| 479 | RA01112 | fixed resistor 1/4W | 100 Ω | R19,R29,R42,R47 |
| 480 | CB00263 | electrolytic capacitor | 10uF /25V φ 4*7mm | C34,C35,C36,C37,C38,C39,C40, C41,C42,C43 |
| 481 | CB00194 | electrolytic capacitor | 47uF/25V φ 5*11mm | C1,C2,C3,C4,C5,C6,C7,C8,C10, C11,C12,C15,C17,C18,C20,C22, C24,C26,C27,C64,C65,C66,C67, C68,C69,C101,C103,C105,C107 |
| 482 | CB00249 | electrolytic capacitor | 47uF/50V φ 6.3*11mm 2.5mm | C70,C71,C72,C73,C74,C75,C76, C77,C78,C79 |
| 483 | HK04832 | PC board | P-OEX600MX-INOUT-SMD | |
| 484 | HB01474 | PCB | OEX600MX-INOUT_VER041213 | |
| 485 | CI00075 | SMD ceramic capacitor 0603 | 0.1uF/50V Y5V +80,-20% | C23,C25,C28,C29,C52,C53,C54, C55,C56,C57,C90,C91,C92,C93, C94,C95,C97,C98,C108,C109, C110,C111 |
| 486 | CI00059 | SMD ceramic capacitor 0603 | 100PF/50V NPO \pm 5% | C32,C33 |
| 487 | RD00068 | SMD fixed resistor 1/10W | 100 Ω \pm 5% 0603 | R24,R34 |
| 488 | RD00101 | SMD fixed resistor 1/10W | 10K Ω \pm 5% 0603 | R13,R14,R16,R27,R38,R43,R59, R60,R65,R66,R92,R91,R35,R50, R90,R93 |
| 489 | RD00069 | SMD fixed resistor 1/10W | 120 Ω \pm 5% 0603 | R131,R132,R133,R134 |
| 490 | RD00102 | SMD fixed resistor 1/10W | 12K Ω \pm 5% 0603 | R79,R80,R126,R127,R17,R26 |
| 491 | CI00094 | SMD ceramic capacitor 0603 | 0.15uF/50V Y5V +80;-20% | C48,C49,C50,C51,C62,C63 |
| 492 | RD00103 | SMD fixed resistor 1/10W | 15K Ω \pm 5% 0603 | R64,R88,R118,R119,R146,R142, R150,R154 |
| 493 | RD00104 | SMD fixed resistor 1/10W | 18K Ω \pm 5% 0603 | R128,R129 |
| 494 | RD00083 | SMD fixed resistor 1/10W | 1.0K Ω \pm 5% 0603 | R124,R125,R41,R46 |
| 495 | RD00084 | SMD fixed resistor 1/10W | 1.2K Ω \pm 5% 0603 | R156,R157,R158,R159 |
| 496 | RD00086 | SMD fixed resistor 1/10W | 1.8K Ω \pm 5% 0603 | R140,R143,R144,R147,R148,R151, R152,R155 |
| 497 | CI00030 | SMD ceramic capacitor 0805 | 1uF/16V Y5V-0805(2012) | C58,C59,C60,C61 |

| No. | Part No. | Descriptions | Specification | Remark |
|-----|----------|----------------------------|---|---|
| 498 | RD00306 | SMD fixed resistor 1/10W | 20K Ω \pm 5% 0603 | R57,R58 |
| 499 | RD00073 | SMD fixed resistor 1/10W | 220 Ω \pm 5% 0603 | R1 |
| 500 | RD00105 | SMD fixed resistor 1/10W | 22K Ω \pm 5% 0603 | R18,R20,R21,R22,R23,R28,R30, R33,R39,R44,R51,R52,R53,R54, R55,R56,R67,R68,R69,R70,R71, R72,R73,R74,R75,R76,R77,R78, R94,R95,R96,R97,R98,R99,R100, R101 |
| 501 | CI00051 | SMD ceramic capacitor 0603 | 22PF/50V NPO \pm 5% | C9,C13,C14,C16,C30,C31 |
| 502 | RD00088 | SMD fixed resistor 1/10W | 2.2K Ω \pm 5% 0603 | R36,R37,R102,R103,R104,R105, R106,R107,R108,R109 |
| 503 | RD00076 | SMD fixed resistor 1/10W | 330 Ω \pm 5% 0603 | R89 |
| 504 | RD00108 | SMD fixed resistor 1/10W | 33K Ω \pm 5% 0603 | R141,R145,R149,R153 |
| 505 | SG00122 | SMD integrated circuit | NJM4580M-TE3 | U1,U2,U4,U6,U7,U8,U9,U11,U3,U5 |
| 506 | RD00111 | SMD fixed resistor 1/10W | 47K Ω \pm 5% 0603 | R31,R32,R61,R62 |
| 507 | RD00093 | SMD fixed resistor 1/10W | 4.7K Ω \pm 5% 0603 | R63,R81,R82,R83,R84,R85 |
| 508 | CI00056 | SMD ceramic capacitor 0603 | 56PF/50V NPO \pm 5% | C19,C21,C44,C45,C46,C47,C80,C81, C82,C83,C84,C85,C86,C87,C88,C89, C99,C100,C102,C104,C106 |
| 509 | RD00095 | SMD fixed resistor 1/10W | 5.6K Ω \pm 5% 0603 | R15,R25,R40,R45 |
| 510 | RD00097 | SMD fixed resistor 1/10W | 6.8K Ω \pm 5% 0603 | R2,R3,R4,R5,R6,R7,R8,R9,R10, R11,R12,R86,R87 |
| 511 | SG00001 | SMD integrated circuit | TL074CDT | U10,U12 |
| 512 | AE00221 | tin soldering paste | SJ-617 | |
| 513 | RA00128 | fixed resistor 1/2W | 560 Ω M type | R137 |
| 514 | AC00002 | solder wire | 63/37% | |
| 515 | RA00165 | fixed resistor 1/4W | 22 Ω M type | R48,R49 |
| 516 | HK04826 | PC board | P-OEX-CONNECTOR(OEX600) | |
| 517 | HB01493 | PCB | OEX-CONNECTOR_VER041118 | |
| 518 | HC00066 | connector(male) | 3P 2.5mm 90° | J2 |
| 519 | HC00684 | connector | CB-8MC 8P male socket | J1 |
| 520 | MI02426 | fixed bracket | OEX 1.0t*41*29*31_V1.1 | |
| 521 | MJ00061 | iron board | 1*2135*1220 20.45kg | |
| 522 | HA03667 | wire | 4P(male)-4P(female) 460mm UL2547 26AWG | |
| 523 | AC00002 | solder wire | 63/37% | |
| 524 | HA03670 | wire | 3P(male)-3P(female) 330mm UL1007 22AWG | |
| 525 | HK04727 | speaker module | OEX600 left | |
| 526 | NI03234 | plastic panel | 6.5inch 722.9*223.6*99.8-OEX left_V1.1 | |
| 527 | NI03236 | rear cover | 6.5inch 722.6*223*208.5-OEX left_V1.0 | |
| 528 | MG00042 | screw | M3*10 | |
| 529 | MG00063 | screw | M3*12 | |
| 530 | MI02419 | fixed board | OEX 1.5t* ϕ 80*7(ϕ 9.5)_V1.0 | |
| 531 | MI02418 | fixed board | OEX 1.5t* ϕ 80*7(ϕ 9.5)_V1.0 | |

| No. | Part No. | Descriptions | Specification | Remark |
|-----|----------|--------------------------|-----------------------------------|--------|
| 532 | MJ00069 | iron board | 1.5*2135*1220 30.67kg | |
| 533 | MD00590 | iron net | OEX 0.8t*575*195_V1.1 | |
| 534 | MD00589 | iron net | OEX 0.8t*575*195_V1.1 | |
| 535 | MD00585 | iron net | 0.8t*620*240_V1.0 | |
| 536 | HK04763 | speaker | 6.5inch 35W 8Ω OEX600 | |
| 537 | MH01736 | T type middle pillar | H0381A_PN 25/380.6 | |
| 538 | MH01737 | washer | I0360A_PS 25/380.6 Z | |
| 539 | MH01738 | magnet | G0325A_D86*32*15 | |
| 540 | MI02501 | holder | L05400B_CR 165B/ZN 42mm | |
| 541 | HC00523 | terminal | M0051B_PT 5.1 | |
| 542 | NI02904 | terminal block | 30*9.5*4t black_V1.0 | |
| 543 | HC00495 | connect terminal | 0.8*13*16.3mm | |
| 544 | HC00496 | connect terminal | 0.8*13*16.3mm | |
| 545 | HG00156 | voice coil | A0XXX0A_BP 25-25-180/11-6 | |
| 546 | ND00429 | spider | D03720A_CT 25-98/3.5 C5_V1.0 | |
| 547 | NH00329 | cone | B04340B_CN 165.25 G Z1 50HZ | |
| 548 | NH00260 | cover | E0302A_CP 28/C | |
| 549 | NH00330 | cushion | C0XXXXA_GR 165/4+2 | |
| 550 | HA02439 | strand | ATA4*3YKA42W(12thige)*55mm | |
| 551 | HA02523 | strand | ATA4*3YKA42W*1M | |
| 552 | MH01110 | rivet | M0500A_OU-30 | |
| 553 | NE13731 | label | OEX 600/900 ALTO_V1.0 | |
| 554 | NI00014 | membrane | 0.035*1M | |
| 555 | NH00012 | bond paper | 0.04*1M | |
| 556 | NI02728 | rubber foot | φ 29.5*14 black | |
| 557 | NI02374 | fixed board | 70*135*10 432C | |
| 558 | HG00081 | speaker | PA-D597 P-AUDIO 8Ω | |
| 559 | MG00491 | screw | M4*35 | |
| 560 | MH01160 | handle | OEX φ 70*96_V1.0 | |
| 561 | HA03413 | wire | 160mm UL1015 18AWG | |
| 562 | HA02320 | single terminal wiring | 800mm UL1015 18AWG | |
| 563 | HA03616 | wire | 550/300mm UL1015 18AWG red/ black | |
| 564 | HK04741 | PC board | P-OEX600/900_XOVER | |
| 565 | HB01457 | PCB | OEX600/900-XOVER_VER041203 | |
| 566 | CN00135 | crossover inductance | 0.75mH(φ 1.0mm R10*30) | L1 |
| 567 | CN00136 | crossover inductance | 0.3mH(φ 0.8mm φ 10mm) | L2 |
| 568 | CF00100 | metal-film capacitor MEA | 15uF/150V 10% | C1 |

| No. | Part No. | Descriptions | Specification | Remark |
|-----|----------|-------------------------------|----------------------------|-------------------|
| 569 | CF00107 | metal-film capacitor MEF | 2.2uF/100V 10% | C2 |
| 570 | HA01919 | jump | 5mm | PTC1 |
| 571 | HA02249 | wire | ϕ 0.6 | |
| 572 | RA00998 | chassis bracket 20W | 1.5 Ω SQY type | R2 |
| 573 | HA01756 | P.V.C single wave wiredUL1015 | 80 black | DS2 |
| 574 | RA00989 | chassis bracket 20W | 15 Ω SQY type | R3 |
| 575 | RA00995 | chassis bracket 20W | 39 Ω SQY type | R4 |
| 576 | RA00993 | chassis bracket 20W | 3.3 Ω SQY type | R1 |
| 577 | HH00036 | lamp | SK3/CWT 12.8V 2.1A | DS1 |
| 578 | RG00012 | over current protector | 0.5A 60V MF-R050 | PTC2 |
| 579 | HC00324 | connect terminal | 6.5m/m (PC250) | P1,P2,P3,P4,P5,P6 |
| 580 | NI02590 | cable tie | YJ-203V0 UL94V-0 | |
| 581 | AC00002 | solder wire | 63/37% | |
| 582 | ND00462 | dustproof cloth | 0.2t*550*220 black_V1.0 | |
| 583 | ND00465 | Carpet cloth | 550*220*50t white_V1.0 | |
| 584 | MG00579 | screw | M5*20 | |
| 585 | MG00454 | screw | M4*20 | |
| 586 | ND00231 | sponge | 15*50*50mm | |
| 587 | HC00371 | MIC jack | SCJ-0658-1-Y | |
| 588 | ME00060 | MIC jack | JY-6351G-02-250 | |
| 589 | MF00061 | MIC jack | JY-6351G-02-250 | |
| 590 | MG00031 | screw | M4*12 | |
| 591 | NI03311 | cushion | 1.5t*28.8*12 black_V1.0 | |
| 592 | MG00536 | screw | M4*20_V1.0 | |
| 593 | NI03412 | rubber coil | ϕ 1.5*1756 black_V1.0 | |
| 594 | NI02031 | fixed board-POM | OEX 19.8*18.972*11.5_V1.1 | |
| 595 | MK00082 | spring | ϕ 2.7*14.5_V1.0 | |
| 596 | MG00073 | screw | M3*14 | |
| 597 | NA00319 | silk wadding | OEX 396.5*232.5*10_V1.0 | |
| 598 | NA00320 | silk wadding | OEX 337.5*56.5*85.5_V1.0 | |
| 599 | MG00581 | screw | M3*25 | |
| 600 | NI01984 | stopper | ϕ 20.5*6 black_V1.0 | |
| 601 | NI03412 | rubber coil | ϕ 1.5*1756 black_V1.0 | |
| 602 | NF00061 | assurance card | ALTO | |
| 603 | ND00469 | EV foam | 2.5t*1150*16_V1.0 | |
| 604 | MG00437 | screw | M3*16 | |
| 605 | MJ00759 | fixed board | OEX 4t*55.5*30.5_V1.1 | |

| No. | Part No. | Descriptions | Specification | Remark |
|-----|----------|---------------------|--------------------------------|--------|
| 606 | MJ01183 | AL plate | 4.0t*1220*71mm 0.95kg | |
| 607 | MF00037 | washer | φ 3.2* φ 5.5*1t | |
| 608 | MG00020 | screw | M3*8 | |
| 609 | MF00014 | washer | φ 3* φ 6.5*0.5t | |
| 610 | ND00123 | absorb sound sponge | 100*305*25.4 | |
| 611 | NI03411 | rubber coil | φ 2*2207.5 black_V1.0 | |
| 612 | ND00472 | EV foam | 1.0t*460*4_V1.0 | |
| 613 | ND00471 | EV foam | 5.0t* φ 80_V1.0 | |
| 614 | ND00468 | EV foam | 1.0t*1210*13.5_V1.0 | |
| 615 | ND00470 | EV foam | 2.0t* φ 31_V1.1 | |
| 616 | MA00002 | panel | OEX 1.2t*361*58.5_V1.0 | |
| 617 | MA00070 | panel | OEX 1.2t*361*58.5_V1.1 | |
| 618 | MJ00059 | single light board | 1.2*2135*1220 24.54kg | |
| 619 | NE13787 | label | OEX600_V1.0 | |
| 620 | NH00012 | bond paper | 0.04*1M | |
| 621 | NI00014 | membrane | 0.035*1M | |
| 622 | NE11750 | label | ALTO PC | |
| 623 | NH00334 | cone paper | 0.040*1m | |
| 624 | AA00179 | warehouse board | OEX600/900 1050*675*130mm_V1.0 | |
| 625 | NB03400 | barrier | OEX600/900_V1.1 | |
| 626 | NA00348 | silk wadding | OEX600/900 down right_V1.1 | |
| 627 | NA00349 | silk wadding | OEX600/900 down left_V1.1 | |
| 628 | NA00350 | silk wadding | OEX600/900 up left_V1.1 | |
| 629 | NB03398 | box | OEX600/900_V1.2 | |
| 630 | NB03401 | barrier | OEX600/900_V1.1 | |
| 631 | NB03402 | barrier | OEX600/900 down_V1.1 | |
| 632 | NB03403 | barrier | OEX600/900 up_V1.2 | |
| 633 | NB03399 | box | OEX600 ALTO_V1.2 | |
| 634 | NB03397 | cardboard | OEX600/900_V1.3 | |
| 635 | NE13849 | label | ALTO OEX600/900_V1.0 | |
| 636 | NF02025 | instruction | OEX600 ALTO_V1.0 | |
| 637 | NH00149 | paper | 889*640mm | |
| 638 | NI03472 | cushion | 116.264*30 OEX black_V1.0 | |
| 639 | NA00379 | silk wadding | OEX600/900_V1.0 | |
| 640 | NB03647 | cardboard | OEX600/900_V1.1 | |
| 641 | NB03646 | cardboard | OEX600/900_V1.1 | |
| 642 | NE05267 | label | red | |

| No. | Part No. | Descriptions | Specification | Remark |
|-----|----------|--------------|---------------|--------|
| 643 | NH00025 | bond paper | 0.065*1M | |
| 644 | NI00018 | membrane | 0.06*1M | |
| 645 | NE02717 | label | MADE IN CHINA | |
| 646 | NH00038 | paper | 0.115*1M | |
| 647 | NI00028 | membrane | 0.110*1M | |
| 648 | MG00031 | screw | M4*12 | |