

# Service Manual

**Model: S-8**

8 Channel Mixing Console



[www.altoproaudio.com](http://www.altoproaudio.com)

**Version: 1.2**

**ISSUE:2003.9.21**

# **CONTENTS**

- 1. Specification**
- 2. Block Diagram**
- 3. Schematic Diagram**
- 4. Printed Circuit Board**
- 5. Wiring Diagram**
- 6. Test Procedure**
- 7. Electrical Parts List**
- 8. Exploded Views & Mechanical Parts List**
- 9. Notes**

## 2. 功能特性介紹說明(FEATURE)

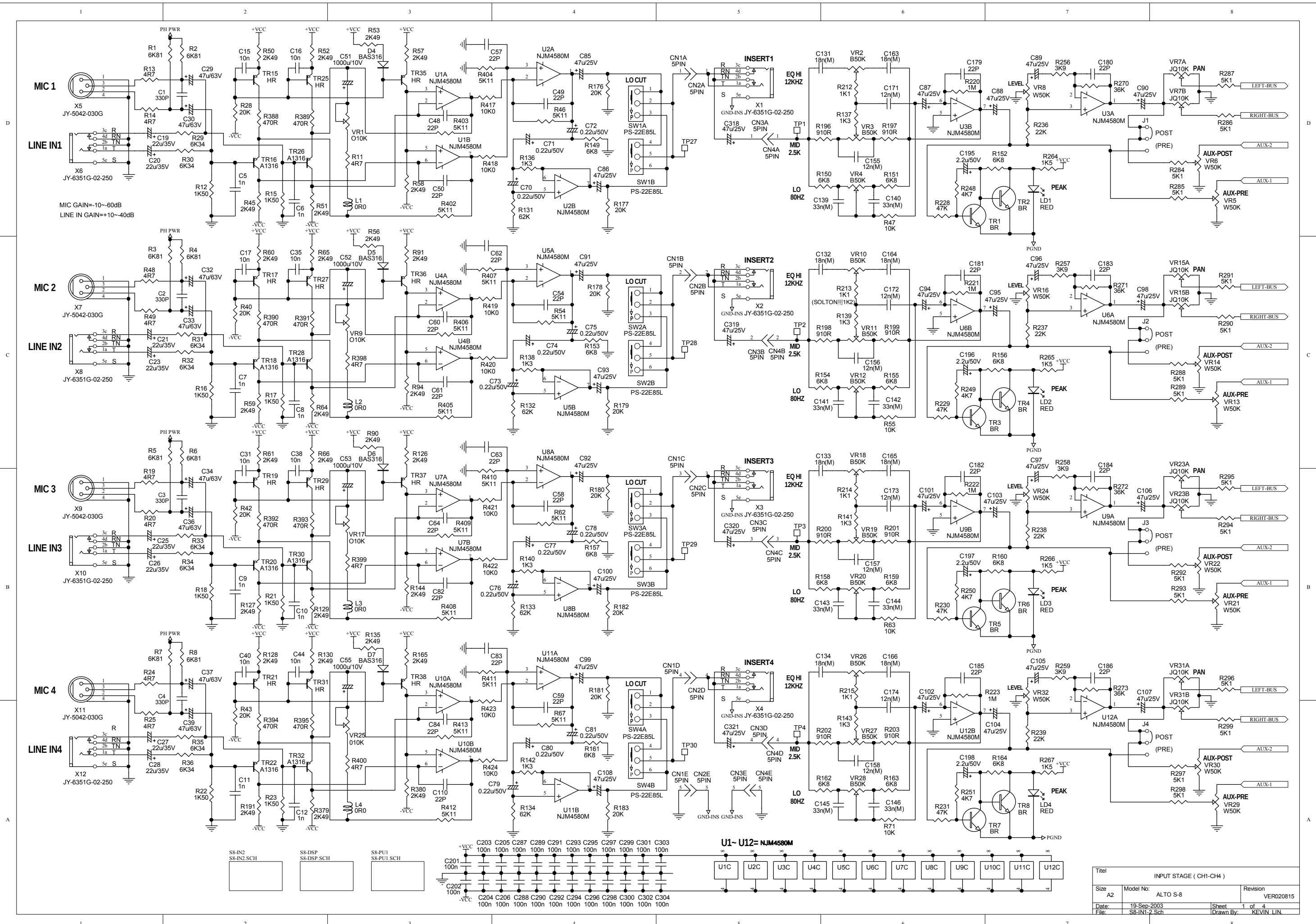
The **S-8** is 5 mono MIC/LINE channels with MIC PREAMPS plus 2 stereo channels perfect for keyboards, MIDI equipment or other stereo sound sources and a 2-track input/output for recording and playback in a mixer small enough to carry in your board luggage: meet the ALTO S-8. In spite of its size, you can find great 3-band equalizers in each channel plus switchable low-cut filters in the mono channels, 2 AUX sends, 2 stereo returns, phantom power and accurate peak LED and level meters. Plus of course our ultra low noise circuitry and exceptional build quality.

- 5 MIC Input Channels with gold plated XLRs and balanced Line Inputs.
- 2 Stereo Input Channels with balanced TRS Jacks.
- Ultra-low noise discrete Mic Preamps with +48 V Phantom Power.
- 2 additional multifunctional Stereo Line Inputs.
- Extremely high headroom – offering more dynamic range.
- Balanced Inputs for highest signal integrity.
- Warm, natural 3-band EQ on each channels.
- Peak LEDs and switchable low-Cut Filter on each Channels.
- 2 AUX Sends per channel for external effects and monitoring.
- Balanced TRS and XLR outputs, Control Room and Headphone Outputs.
- 2-Track Inputs assignable to Main Mix, Control Room / Headphone Outputs.
- Highly accurate 12 segment Bar graph Meters.
- Inserts on MIC channels.
- performance and excellent noise figures
- Rugged construction ensures long life even under the most demanding conditions
- Manufactured under ISO9001 certified management system

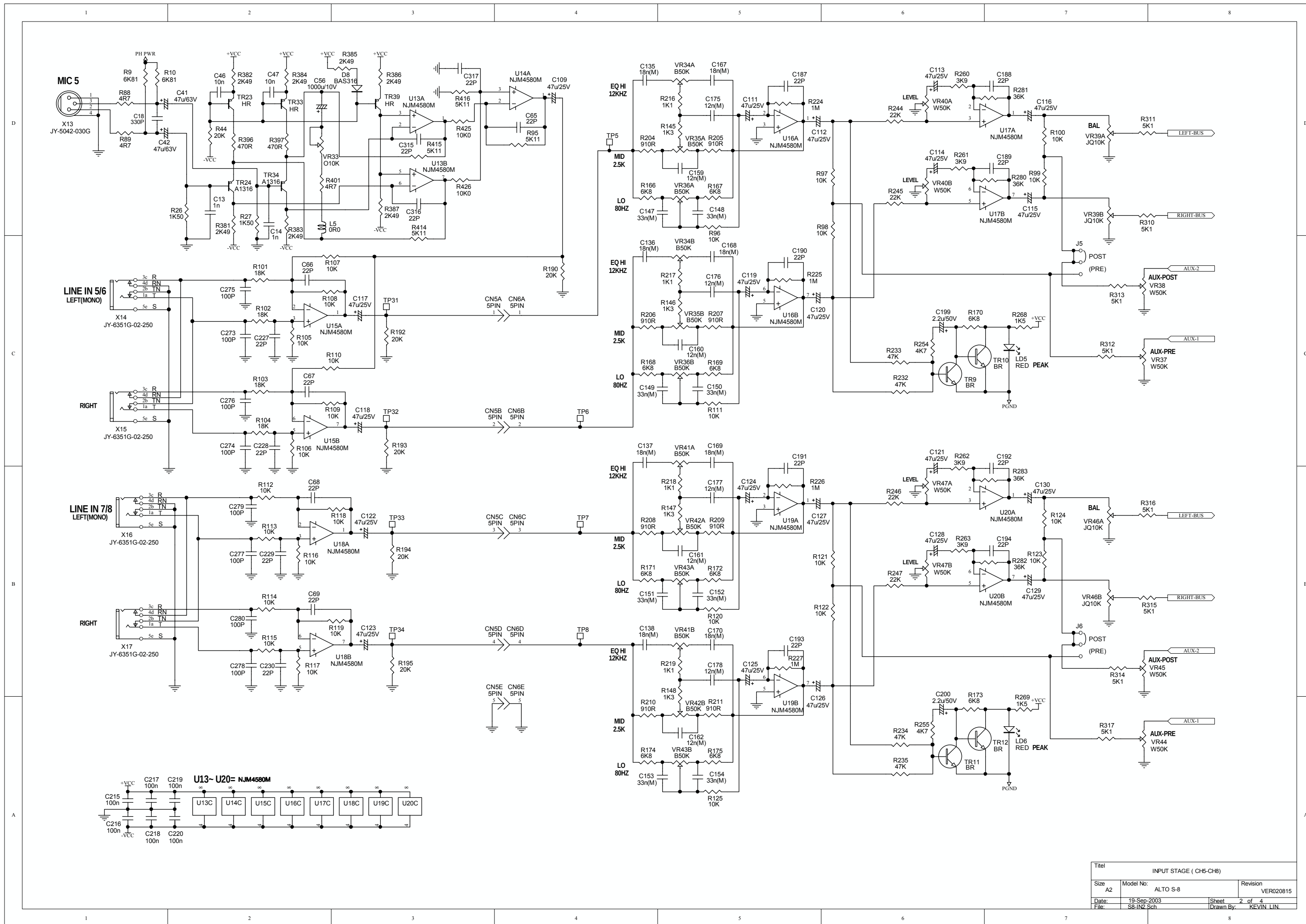
### Features:

Function	description	notes
Channel inputs	8	
Mono channels	4(5)	
Stereo channels	2	
MIC PREAMPS	4	
EQ (mono channels)	3-band plus low-cut	
EQ (stereo channels)	3-band	
Aux sends	2	
Stereo aux returns	2	
2-track input/output	1	
Phantom power	+48 V	

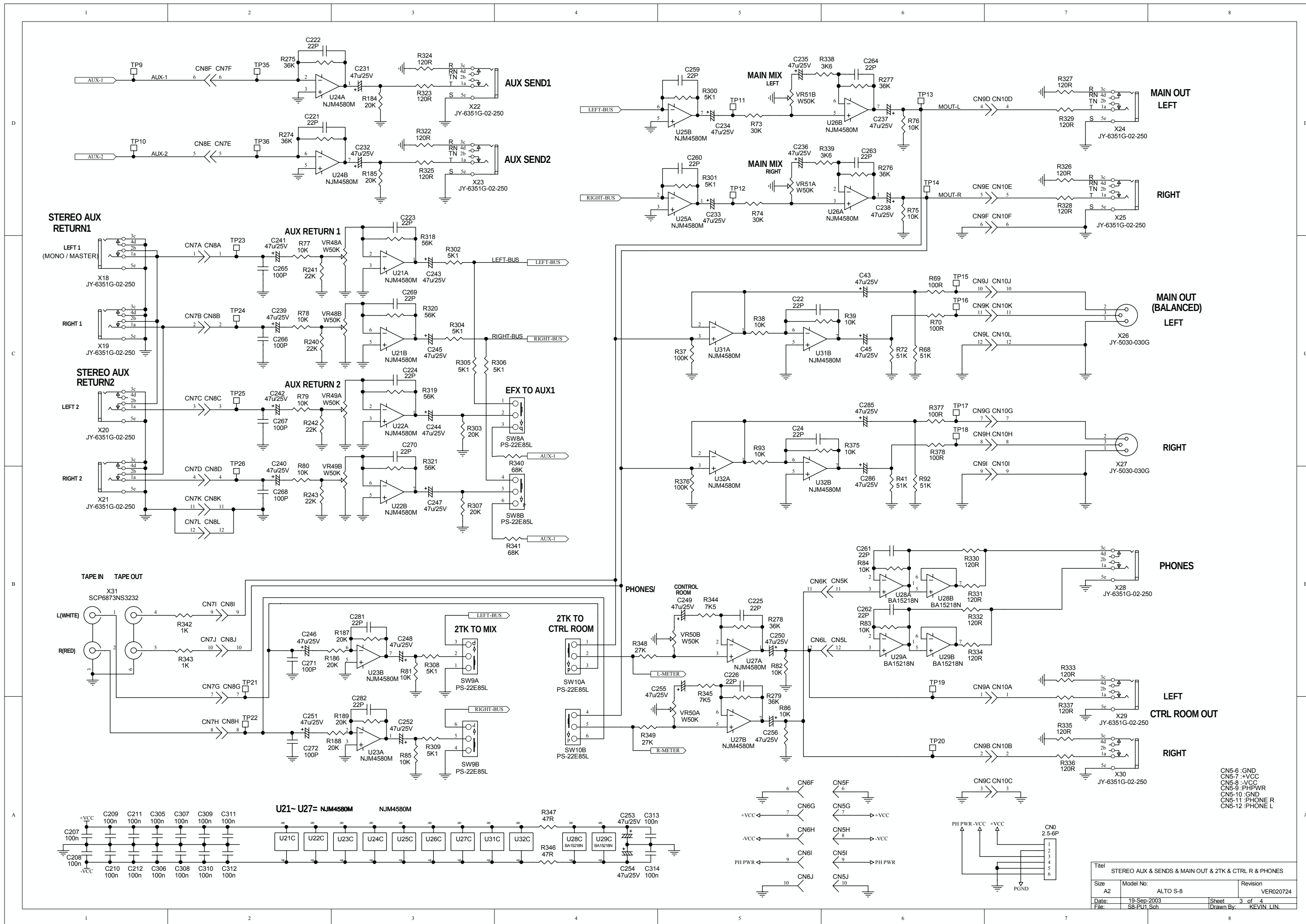




Title			
INPUT STAGE (CH1-CH4)			
Size	Model No:	Revision	
A2	ALTO S-8	VER020815	
Date:	19-Sep-2003	Sheet	1 of 4
File:	S8-IN1-2.Sch	Drawn By:	KEVIN LIN



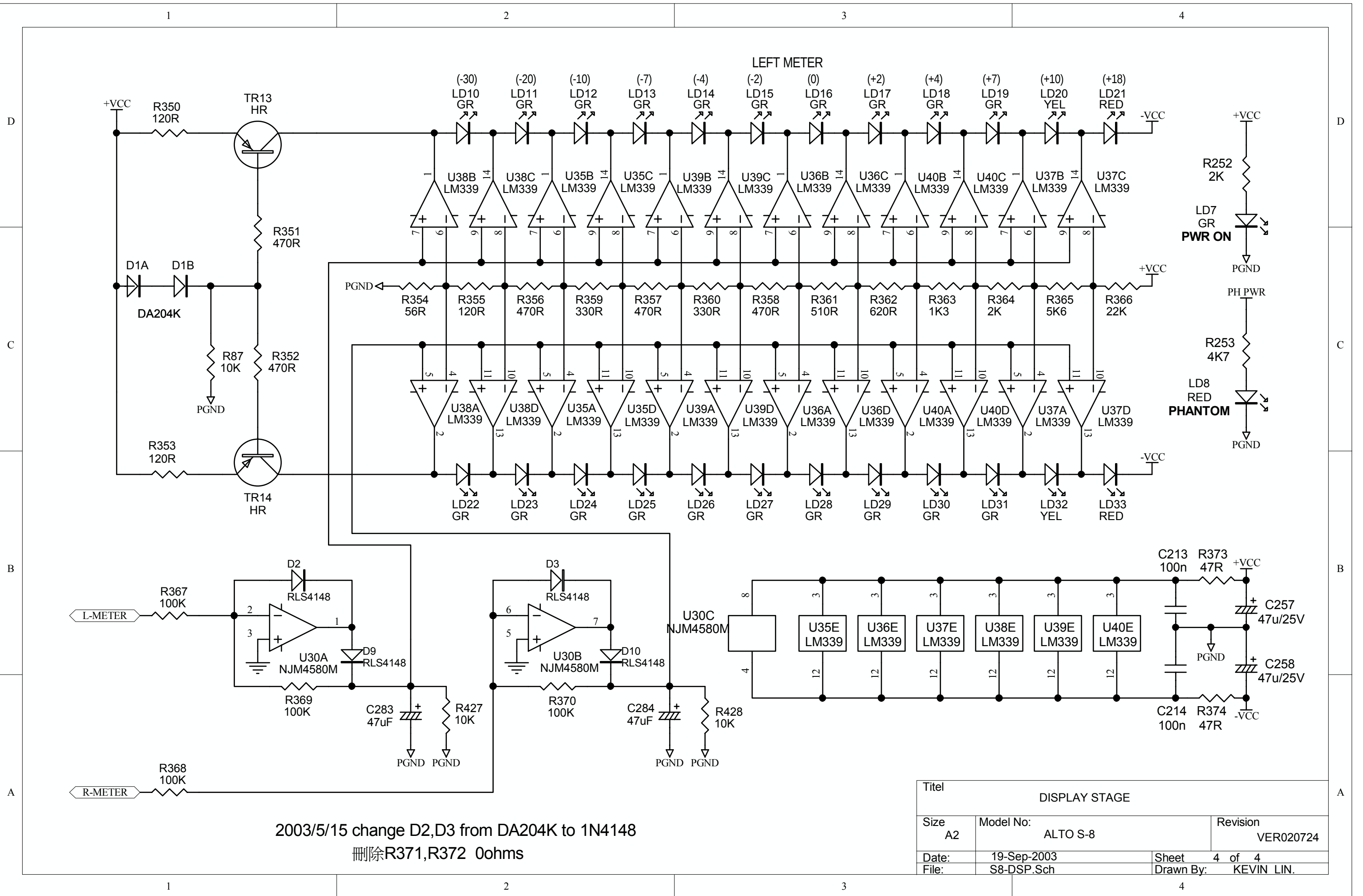
Title			
INPUT STAGE ( CH5-CH8)			
Size	A2	Model No:	ALTO S-8
Revision			VER020815
Date:	19-Sep-2003	Sheet	2 of 4
File:	S8-IN2 Sch	Drawn By:	KEVIN LIN



CN5-6 :GND  
 CN5-7 :+VCC  
 CN5-8 :VCC  
 CN5-9 :PHPW  
 CN5-10 :GND  
 CN5-11 :PHONE R  
 CN5-12 :PHONE L

Title: STEREO AUX & SENDS & MAIN OUT & 2TK & CTRL R & PHONES			
Size: A2	Model No: ALTO S-8	Revision: VER020724	
Date: 19-Sep-2003	Sheet: 3 of 4		
File: S8-PU1.Sch	Drawn By: KEVIN LIN		



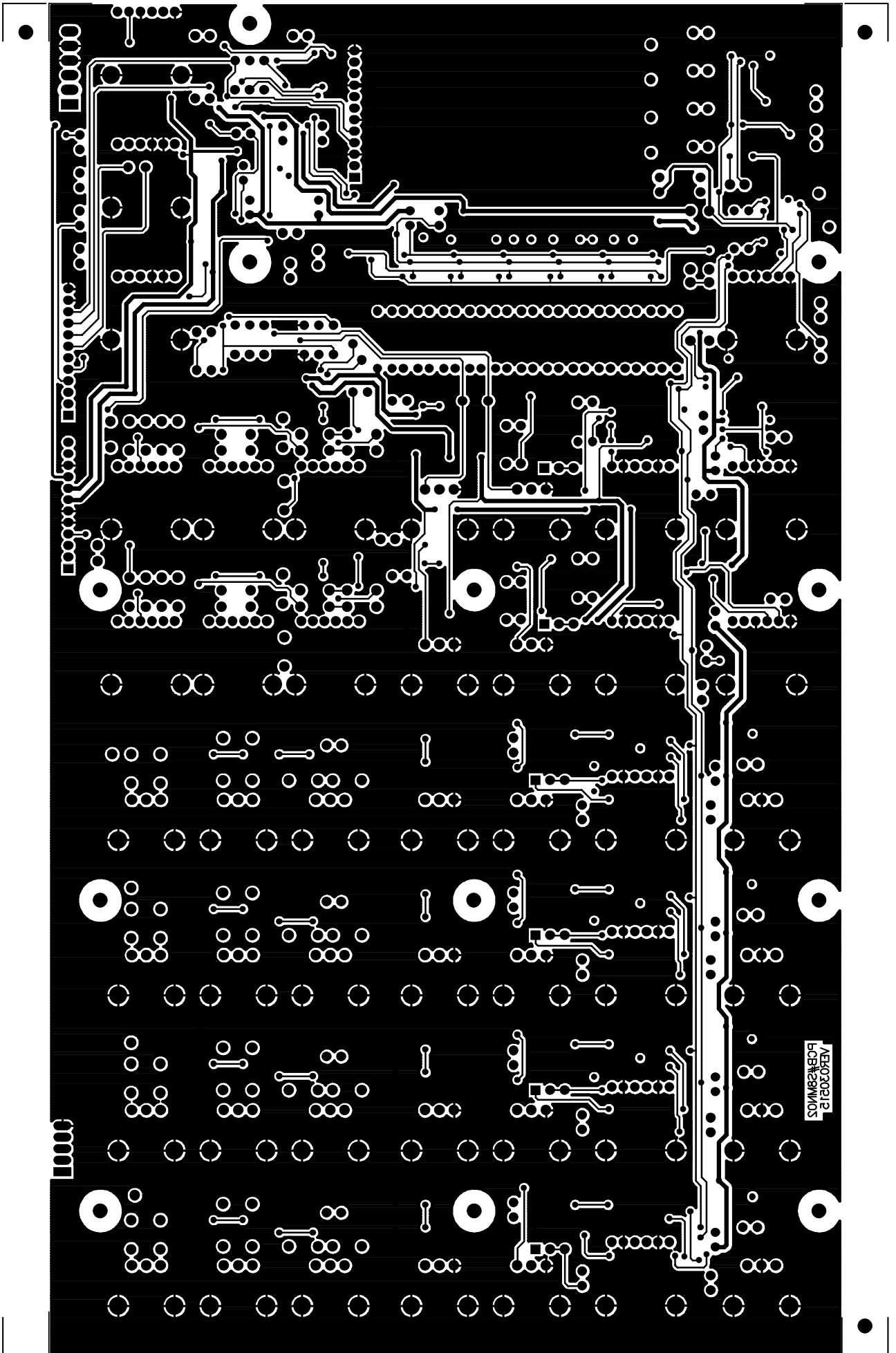


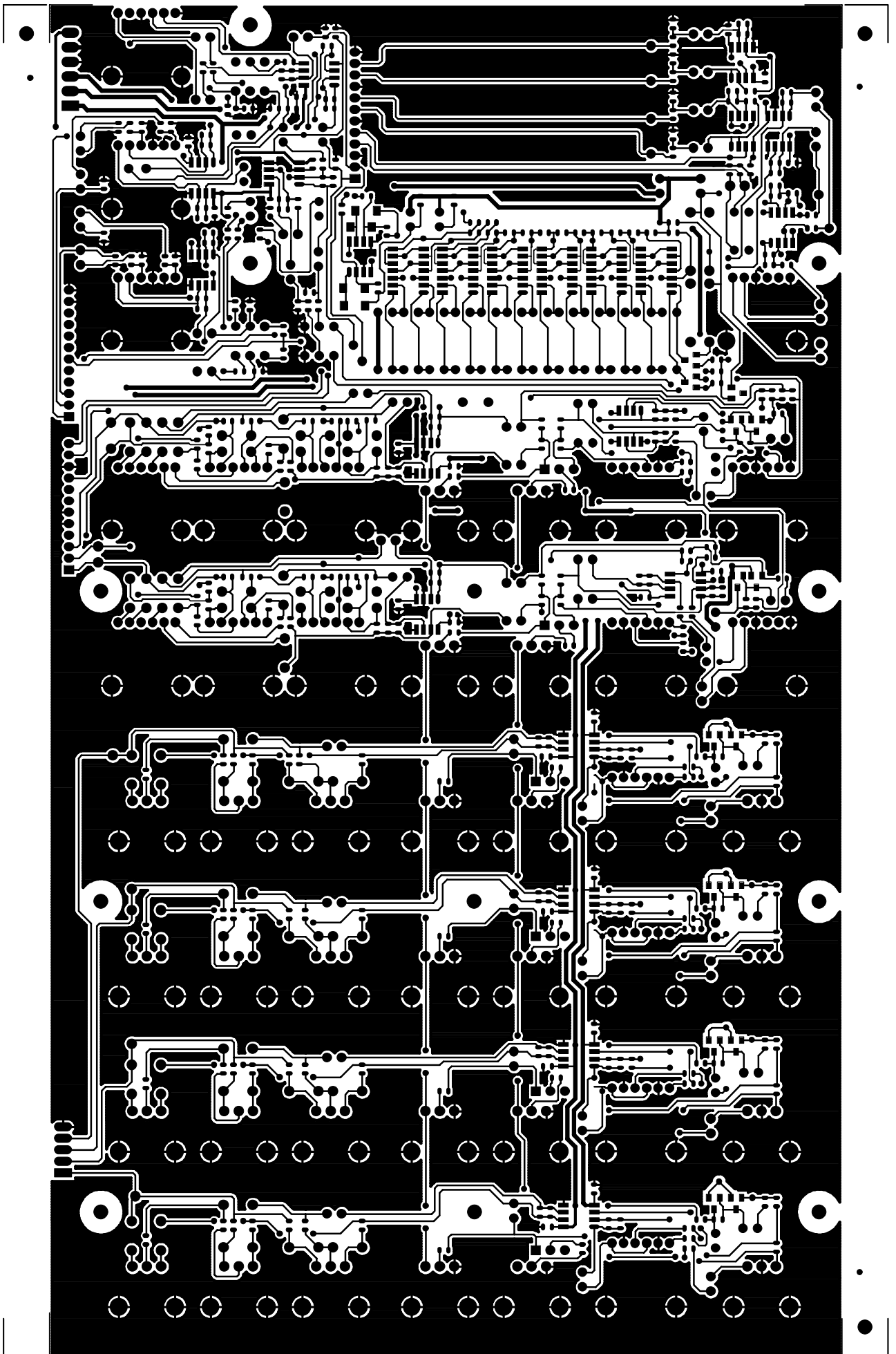
2003/5/15 change D2,D3 from DA204K to 1N4148  
 删除R371,R372 0ohms

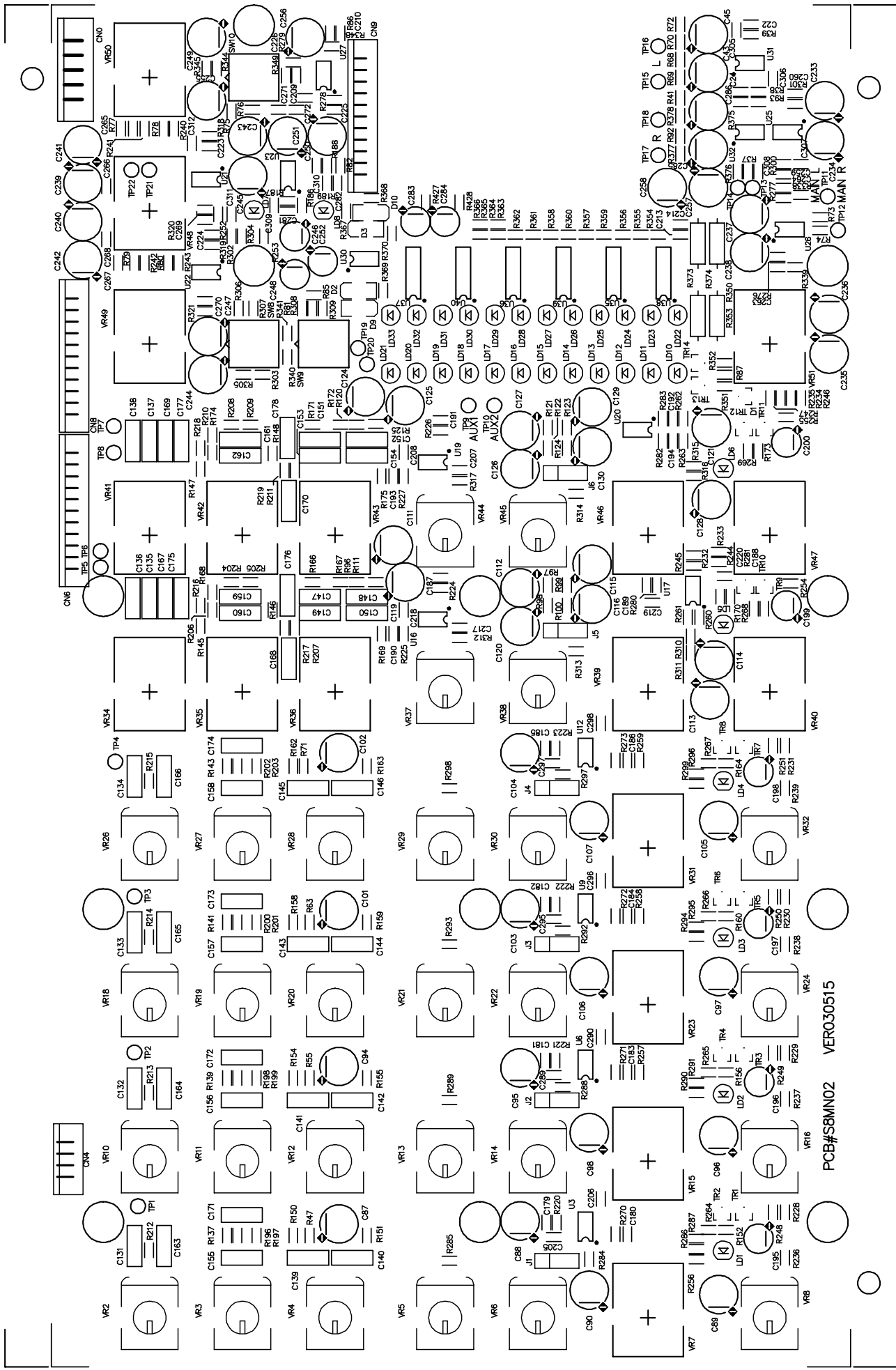
Titel			DISPLAY STAGE		
Size	Model No:	Revision		VER020724	
A2	ALTO S-8				
Date:	19-Sep-2003	Sheet	4 of 4		
File:	S8-DSP.Sch	Drawn By:	KEVIN LIN.		



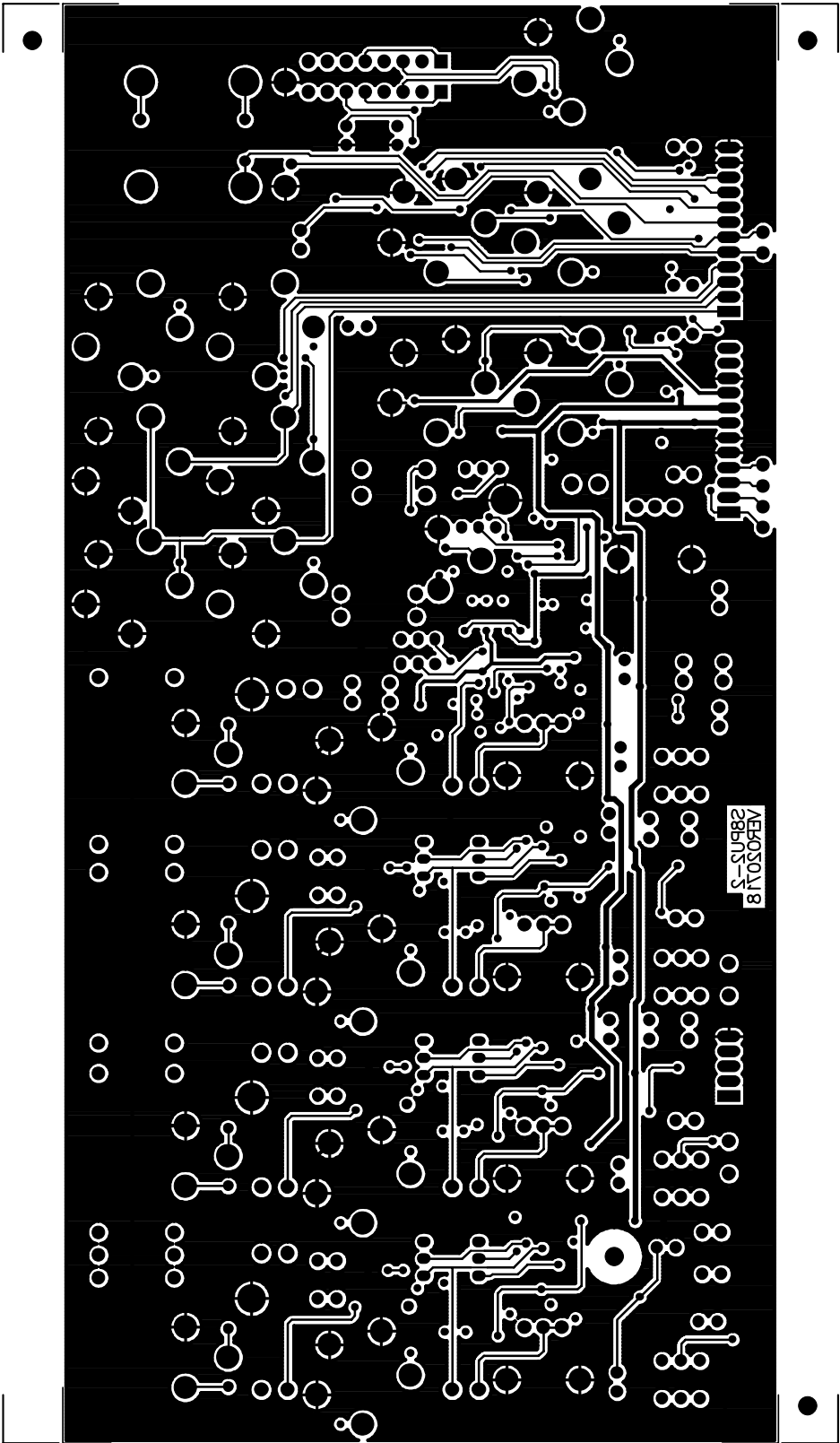


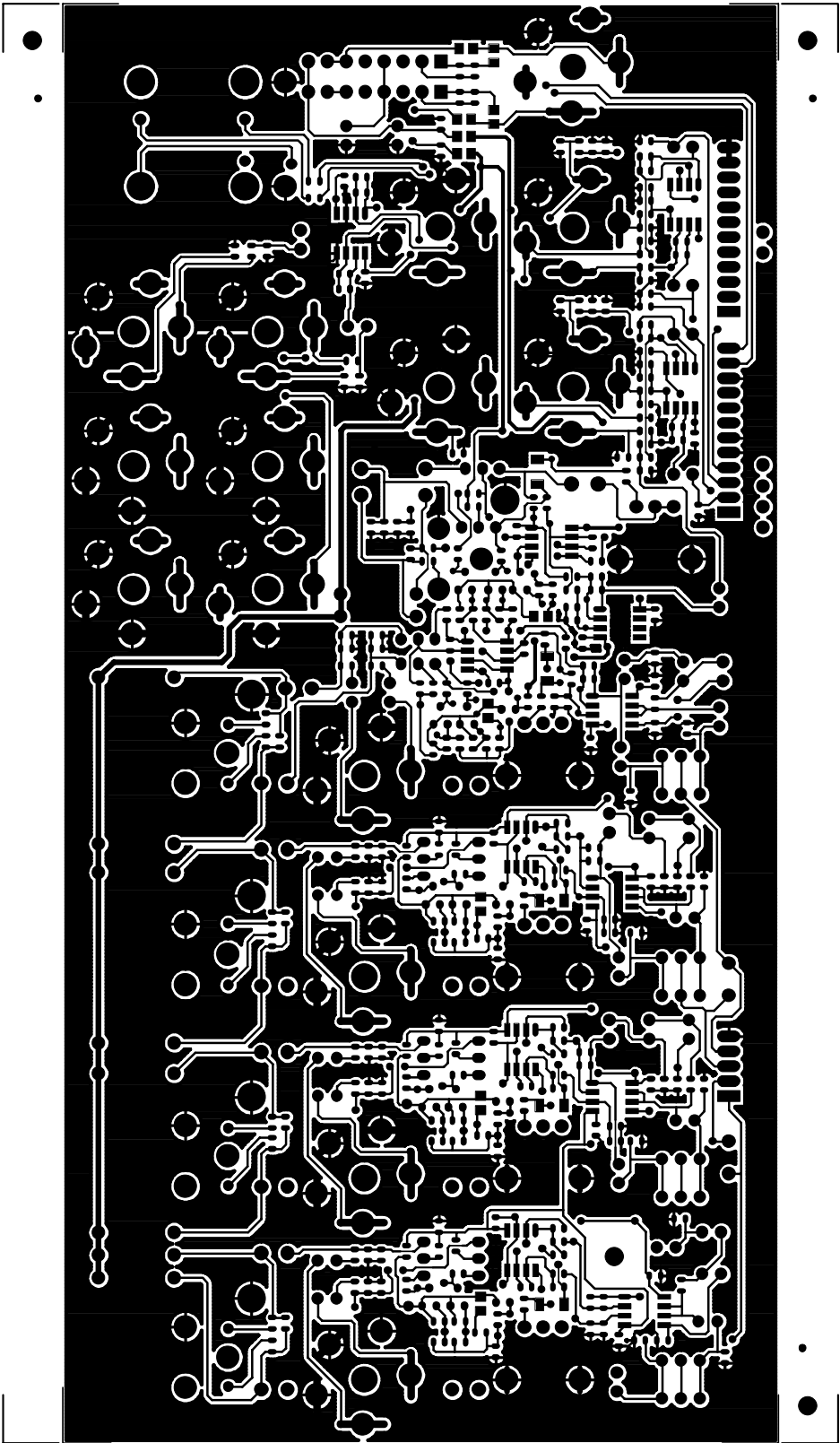




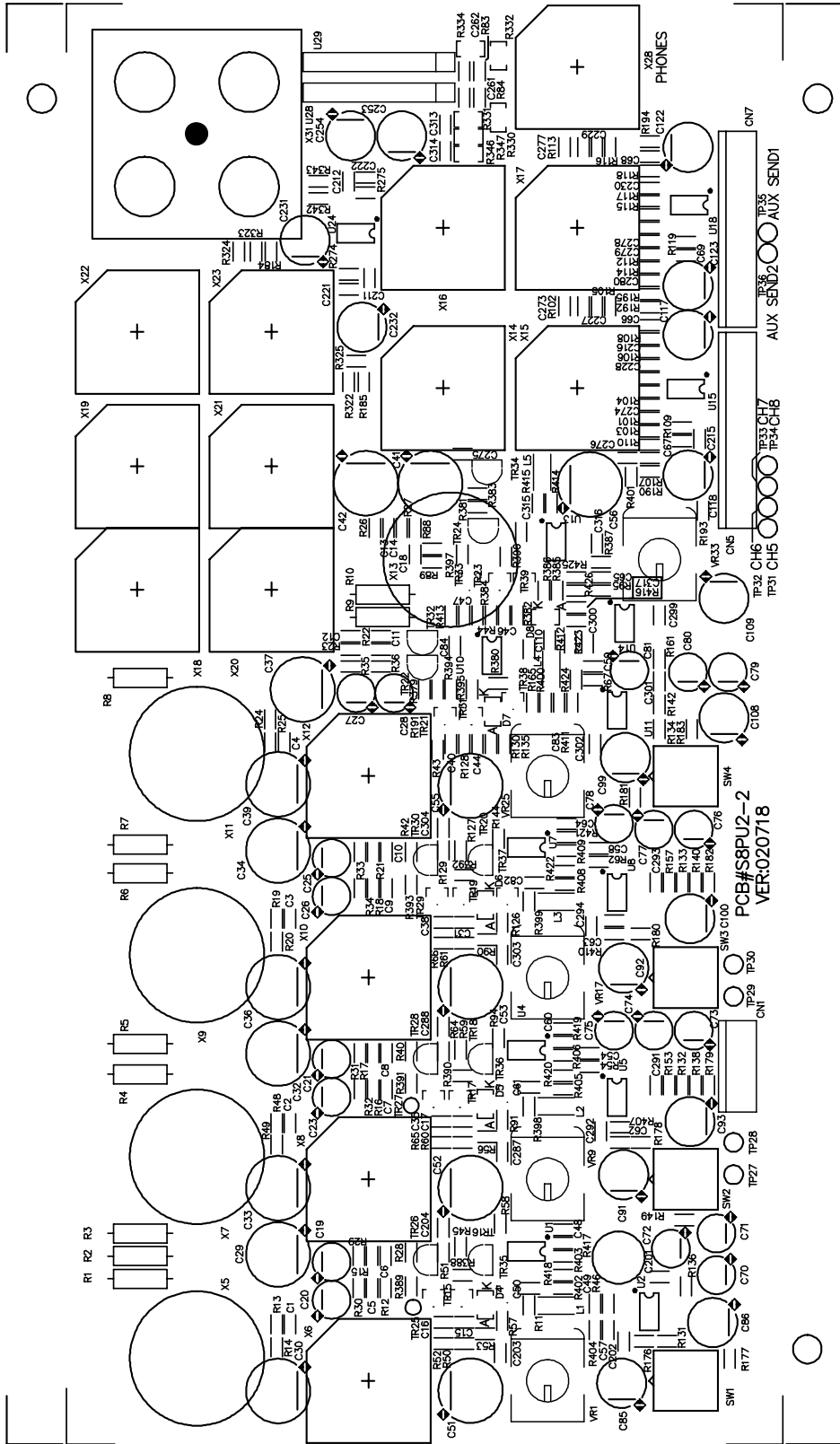


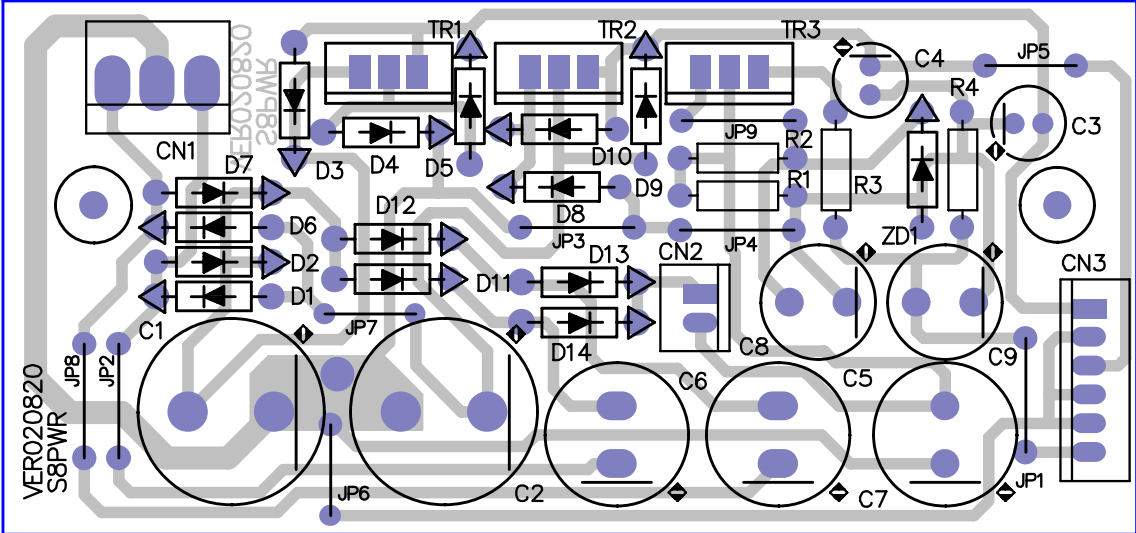
PCB#SBMN02 VER030515



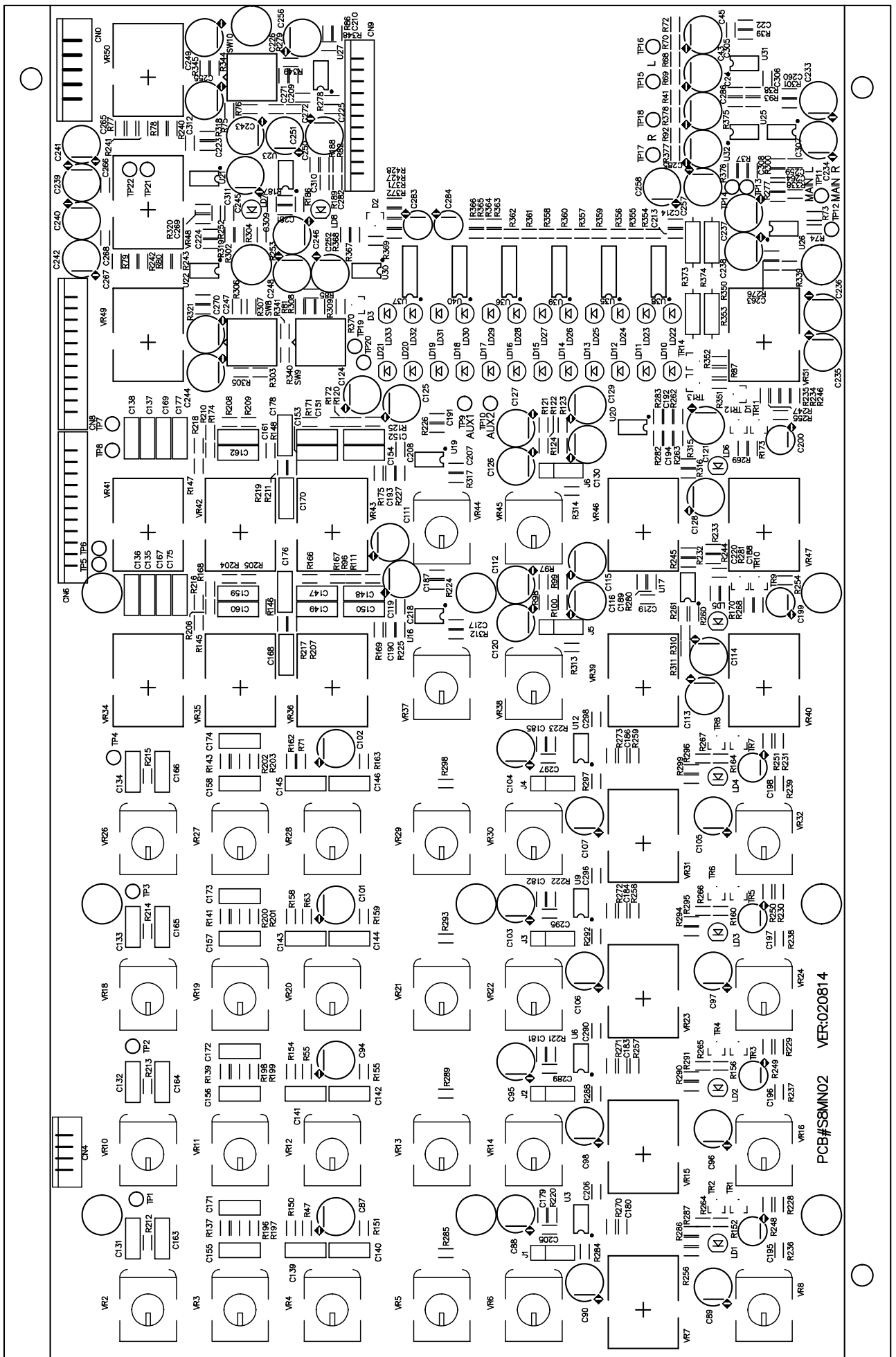




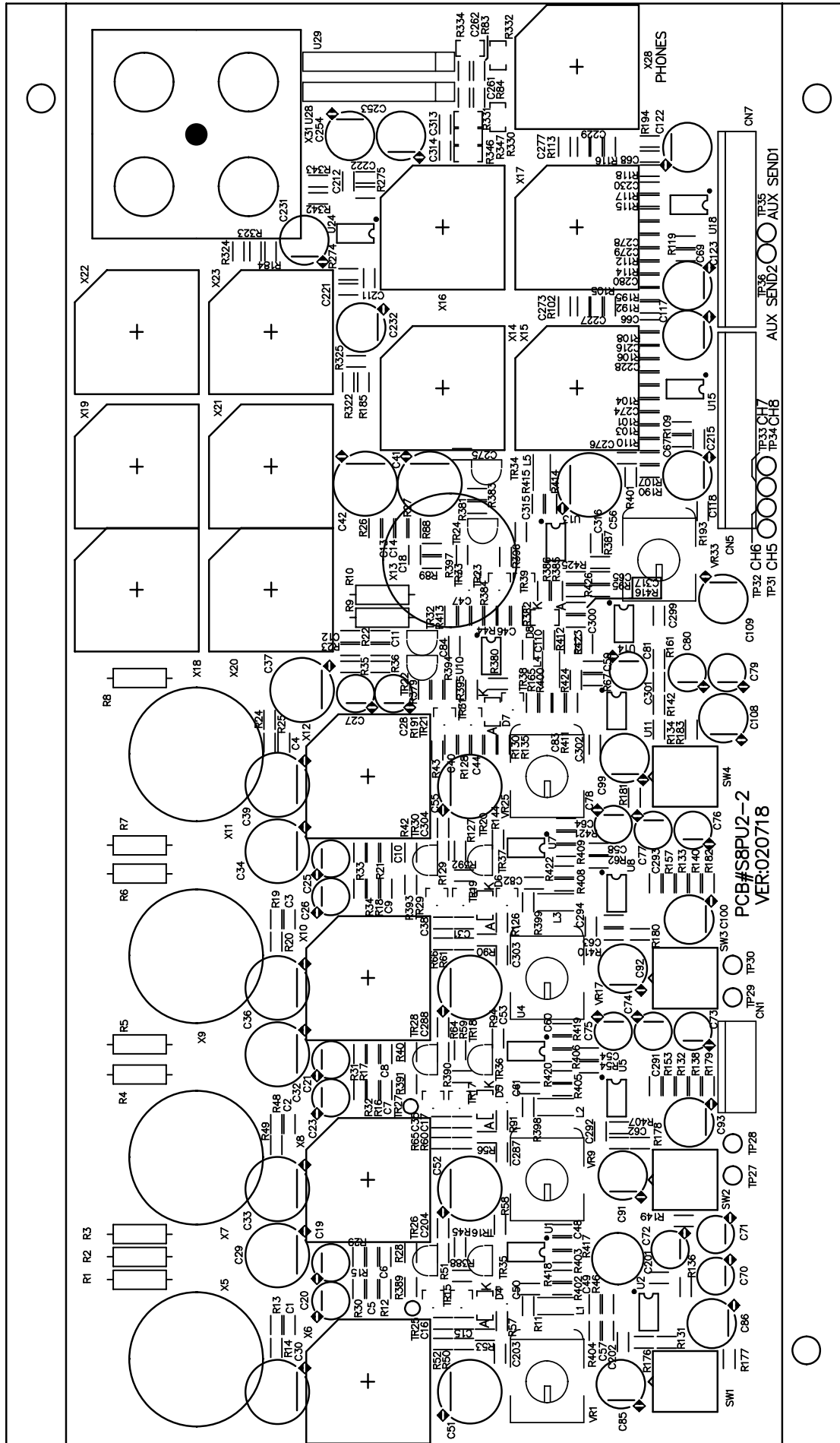






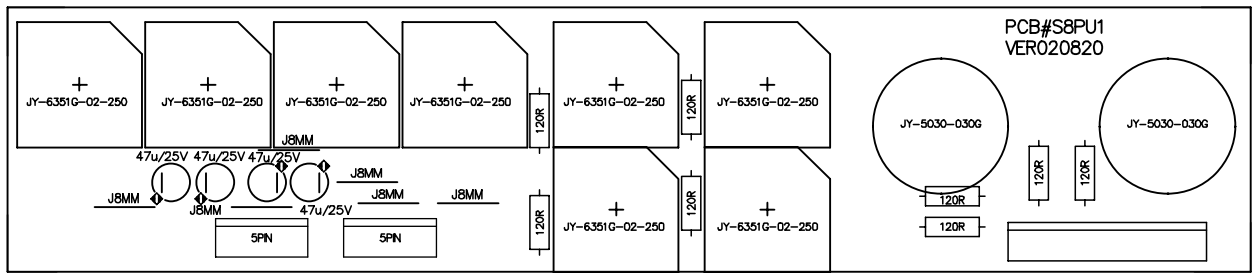


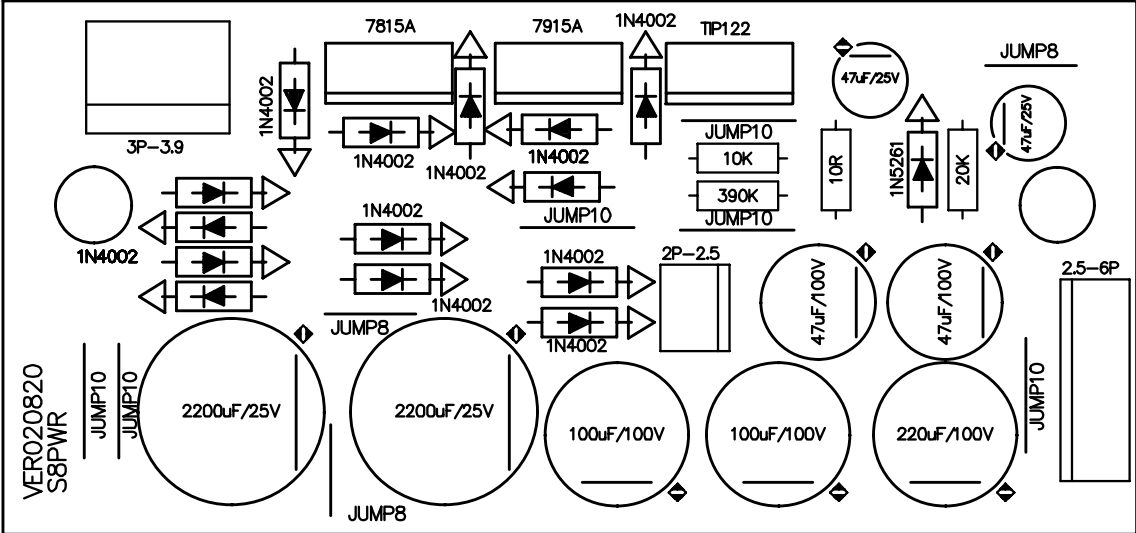




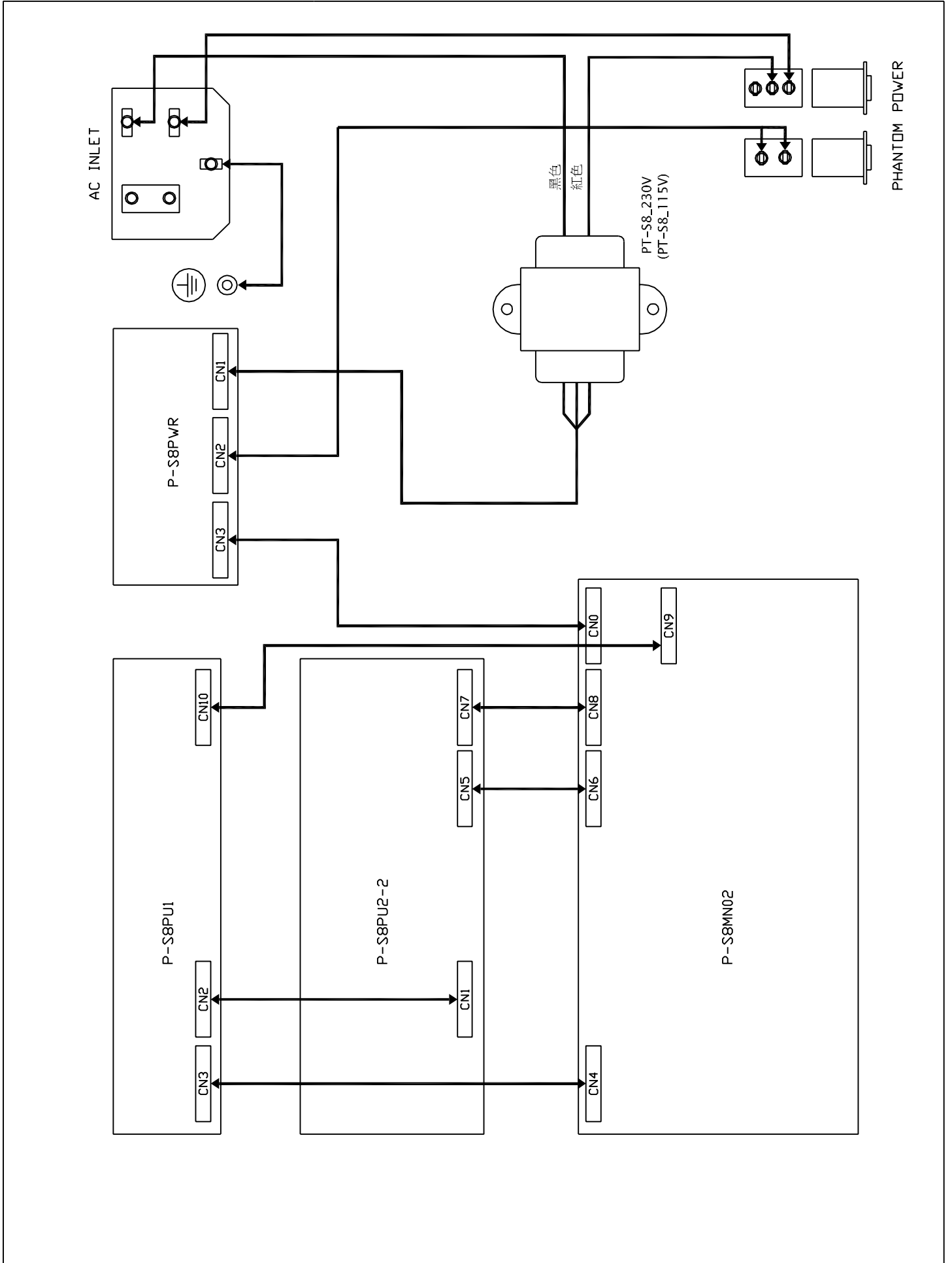








# 5. S-8 WIRE CONFIGURATION (全機配線圖)



---

---

---

---



---

---

---

---

---

---

---

---

---

---

---

---

---

---

---

---

---

---

---

---

---

---

---

---

---

---

---

---

---

---

---

---

---

---

---

---

---

---

---

---

---

---

---

---

---

---

---

---

---

---

---

---

---

---

---



---

---

---

---

---

---

---

---

---

---

---

---

---

---

---

---

---

---

---

---

---

---

---

---

---

---

---







---

---

---

---

---

---

---

---

---

---

---

---

---

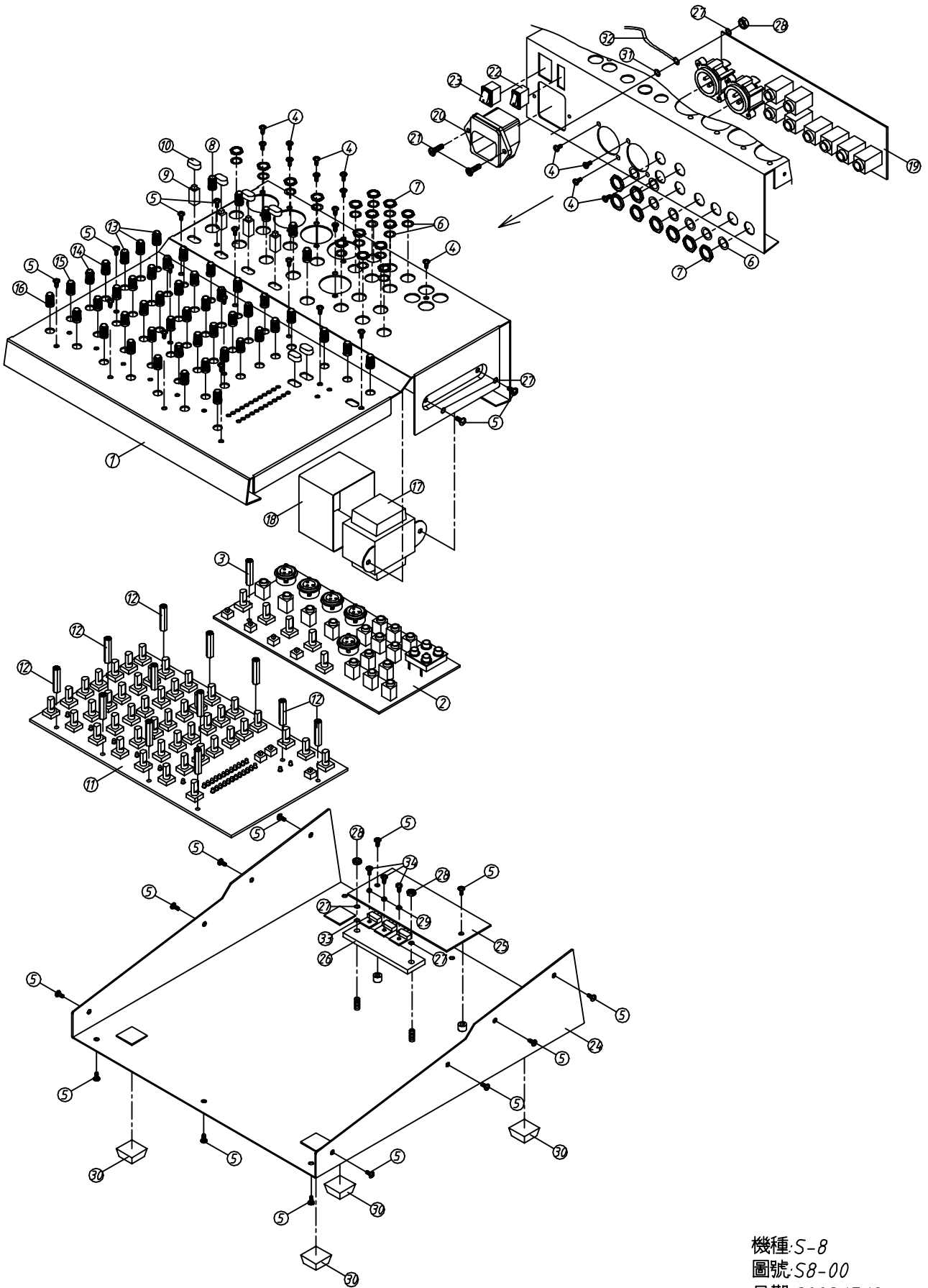
---



---

---

---



機種: S-8  
圖號: S8-00  
日期: 2002/7/8

Mechanical Parts List

Model No.		ALTO S-8		
NO	Item No	Item Description		pcs
1	MA03464	panel	S-8 ALTO-EUROPE	1
2	HK00927	K-PC board	P-S8PU2-DIP	1
3	MG00305	copper pole	M3*24*0.5PH	1
4	MG00042	screw	M3*10	15
5	MG00041	screw	M3*6	44
6	MF00061	washer	JY-6351G-02-250	23
7	ME00060	socket nut	JY-6351G-02-250	23
8	NI02084	knob	φ 10.5*18	5
9	NI01862	key	5.5*5.5*14.5	4
10	NI01863	key	φ 5.5*W10*7.5	7
11	HK00925	K-PC board	P-S8MN02-DIP	1
12	MG00304	copper pole	M3*14*0.5PH	12
13	NI02083	knob	φ 10.5*18	21
14	NI02081	knob	φ 10.5*18	12
15	NI02082	knob	φ 10.5*18	6
16	NI00826	knob	φ 12*18	7
17	TC00116	trasformer	PT-S8_230V	1
18	MI01445	separating shade	S-8 PT-S8用	1
19	HK00928	K-PC board	P-S8PU1	1
20	HC00008	AC outlet	3515 A TYPE(RF-2004-C-4.8)	1
21	MG00061	screw	M3*10	2
22	HI00171	switch	R612KKAT0F1	1
23	HI00026	power switch	RA12KKATOF 2P	1
24	MB02345	bottom board	S-8	1
25	HK00929	K-PC board	P-S8PWR	1
26	MJ01027	heat-sink	S-8	1
27	MF00037	washer	φ 3* φ 5*1t	8
28	ME00015	colour nut	3m/m	3
29	NI02249	caushion	TW-1(TO-220)	3
30	NI00501	foot cushion	12.7*9*3t(SF-004)	4
31	MF00014	washer	φ 3* φ 6.5*0.5t	1
32	HA01174	signle terminal wiring CF:W146	80 green/yellow	1
33	MF00030	washer	φ 3* φ 8*0.8t	2
34	MG00163	screw	丸3*8	3