

Service Manual

Model: X23 (2-WAY STEREO 3-WAY MONO)
ACTIVE CROSSOVER



www.altoproaudio.com

Version: 1.1

CONTENTS

- 1. Specification**
- 2. Block Diagram**
- 3. Schematic Diagram**
- 4. Printed Circuit Board**
- 5. Wiring Diagram**
- 6. Test Procedure**
- 7. Electrical Parts List**
- 8. Exploded Views & Mechanical Parts List**
- 9. Notes**

1. SPECIFICATION (X23)

Electrical

LOW-MID Frequency Range	Range×1 80Hz - 1KHz
MID-HIGH Frequency Range	Range×10 800Hz - 10KHz
HUM & Noise	AV=0dB, fc=800Hz
LOW Section (Output@0dB)	<-106dBu
HIGH Section(Output @0dB)	<-97dBu
S/N Ratio	118dB

Controls

Input Level	continuously variable
Output Level	low, high continuously variable
CD Boost	rear panel switch
Mute	low, high front panel switches
Phase	rear panel switch

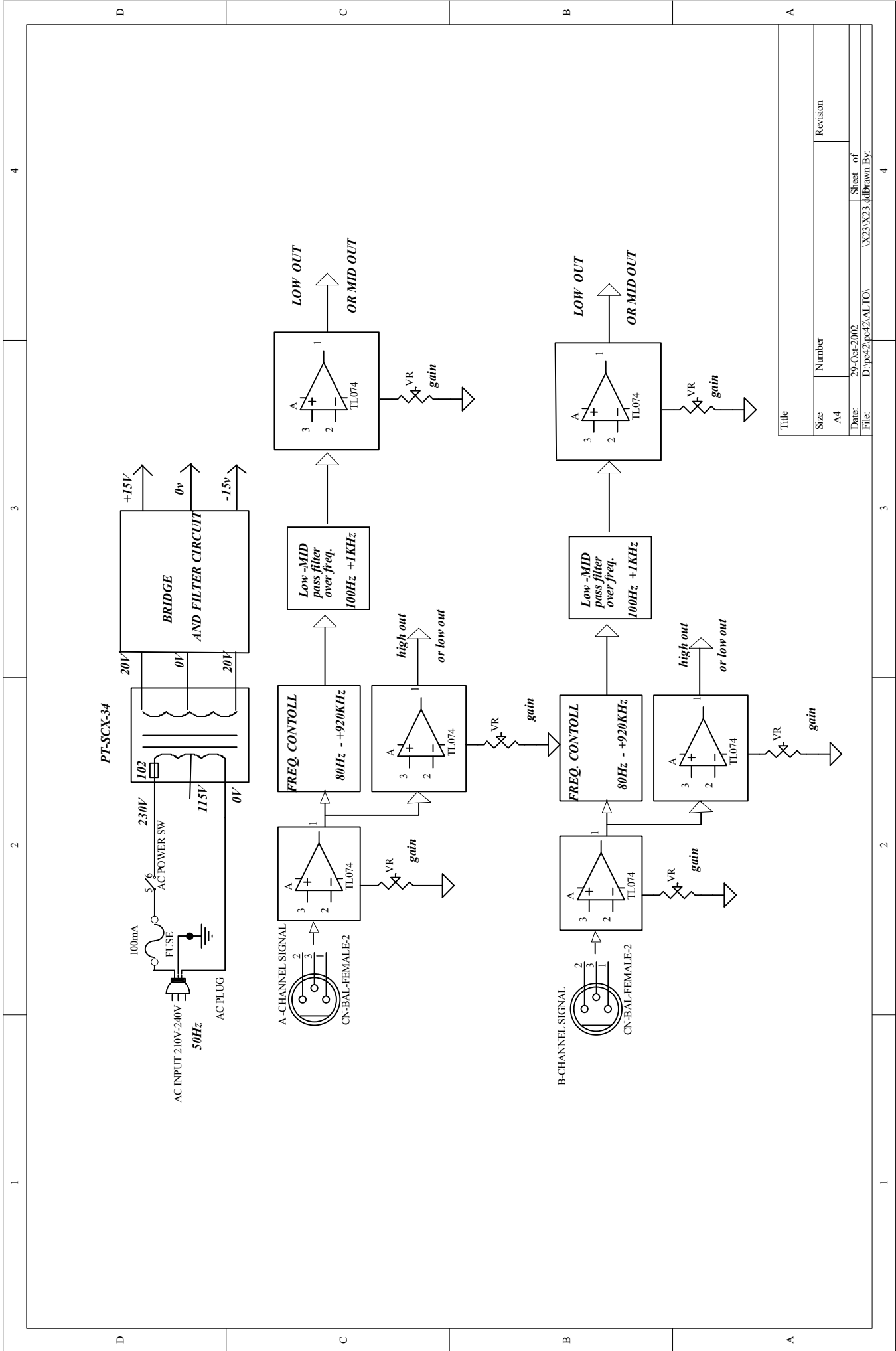
Power Supply

Connector type	3-pole IEC , grounded
Type	Servo controlled , stabilized
Mains supply	95-120V~/210-240V~,60-50Hz
Power Rating	8.5W

Physical

Dimensions	483(W)×194.5(D)×44(H)mm (19"×7.7"×1.7")
Weight	3.1Kg(6.84lb)

2. Block Diagram



Title	
Size	Number
A4	
Date:	Revision
29-Oct-2002	
File:	Sheet of
D:\pc42\pc42\AL10\	\X23\X23.qd
	Drawn By:

4

3

2

1

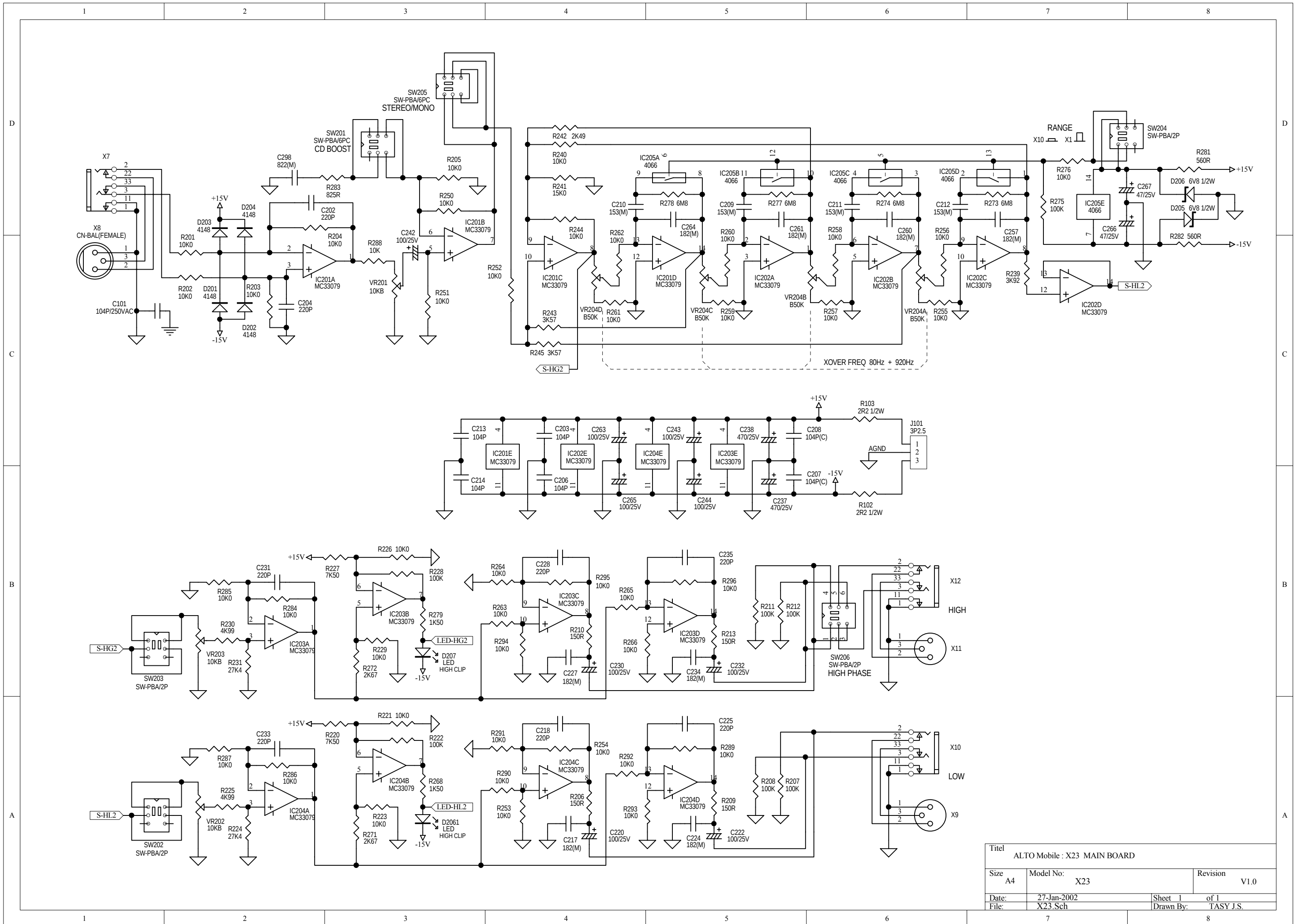
4

3

2

1

3. Schematic Diagram



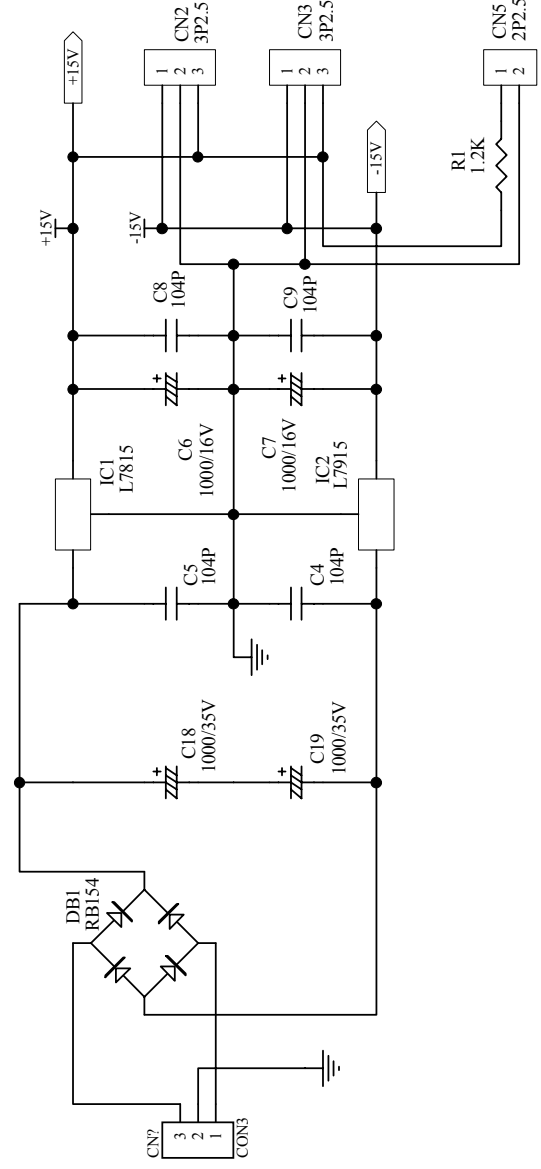
Titel			
ALTO Mobile : X23 MAIN BOARD			
Size	A4	Model No:	X23
Revision	V1.0		
Date:	27-Jan-2002	Sheet	1 of 1
File:	X23.Sch	Drawn By:	TASY J.S.

D

C

B

A



Title
SCX系列] POWER Schematic

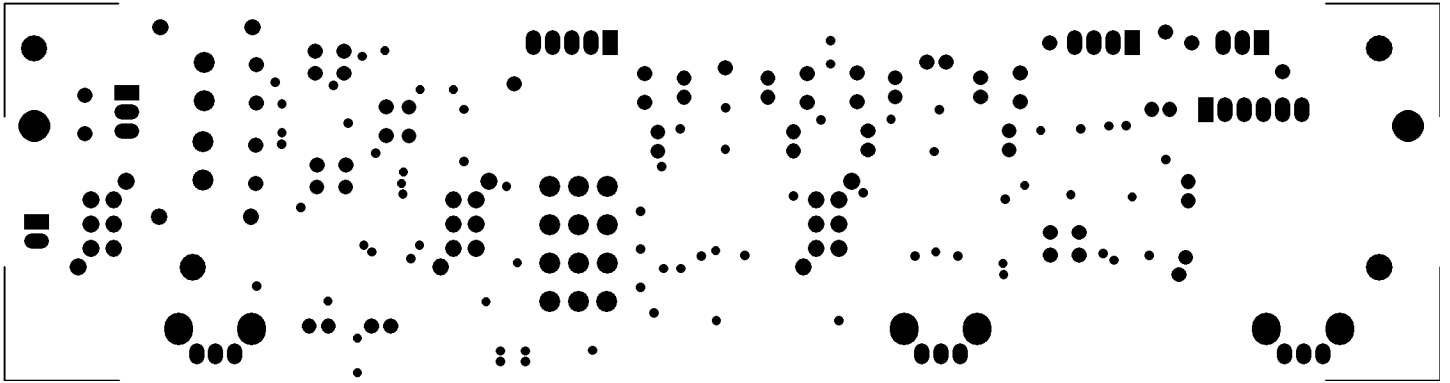
Size	Number	Revision
A4		
Date:	27-Jan-2002	
File:	D:\pc42\pc42\pc42\IS-OVER\SCX202\SCX202\POWER\SCX202S.ddb	

D

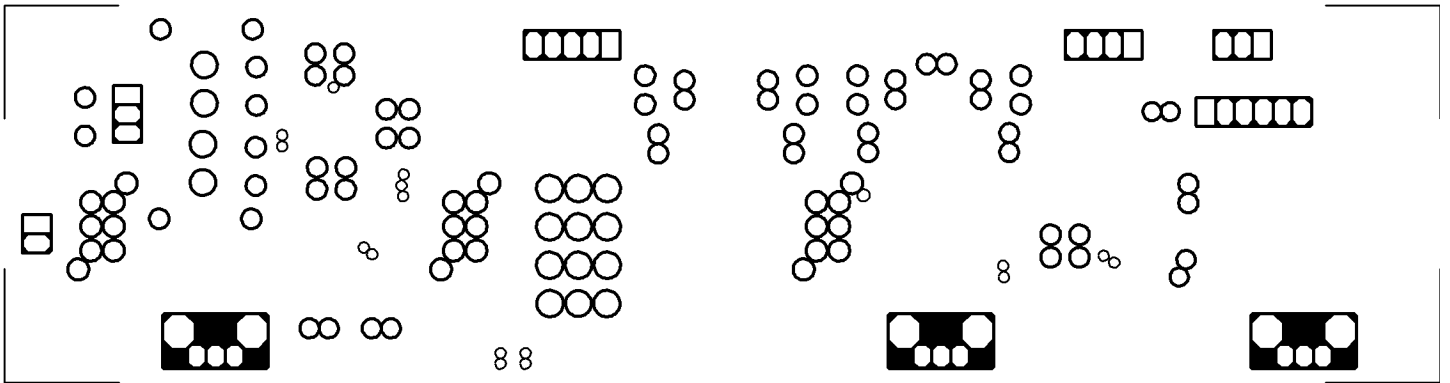
C

B

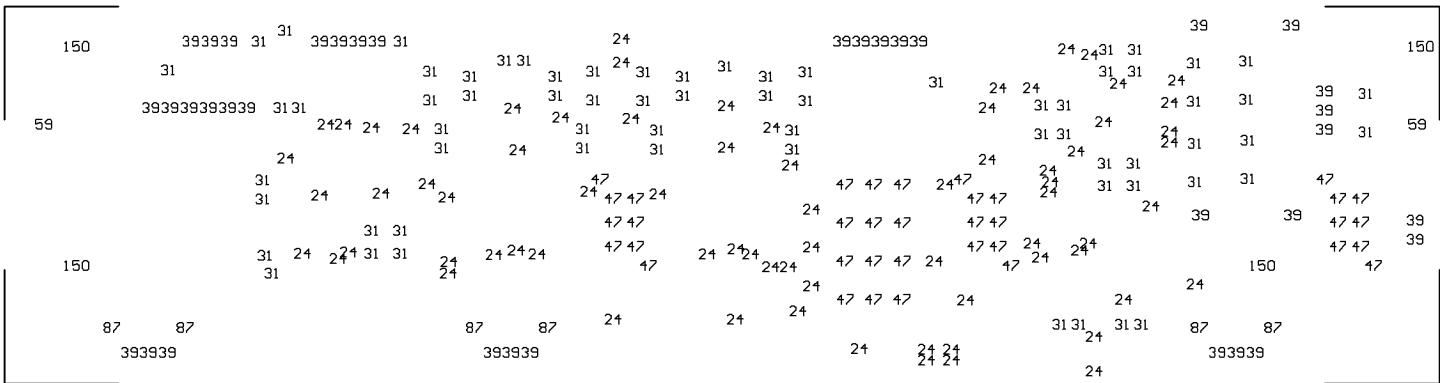
A



PCB : X23(M) Bottom Solder Mask



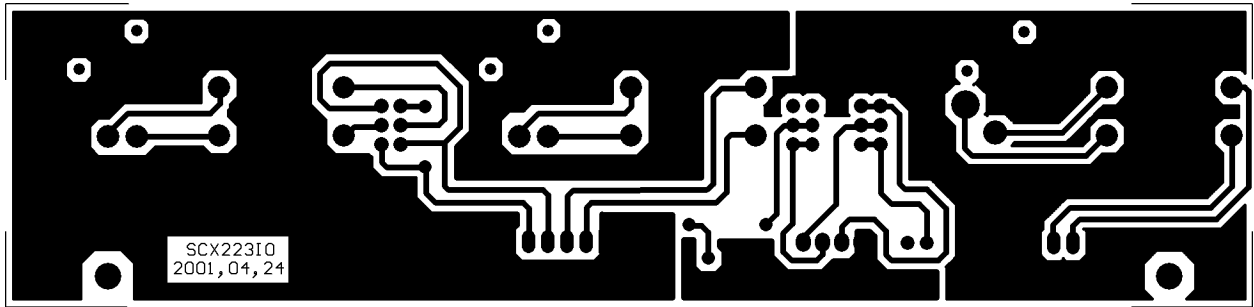
PCB : X23(M) Bottom Overlay



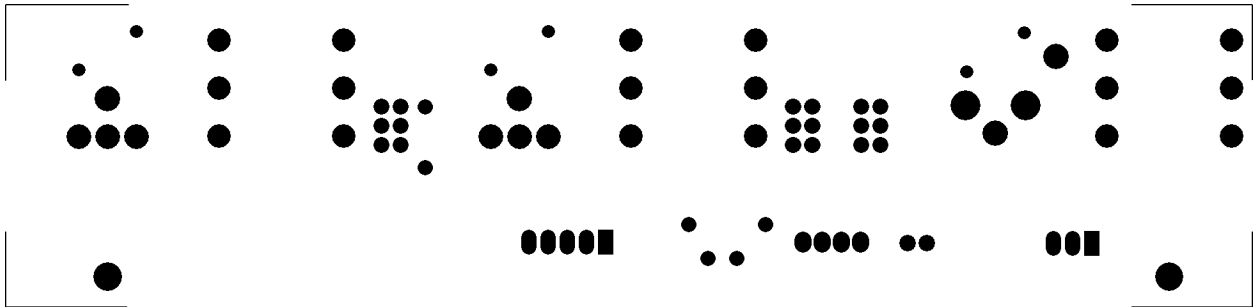
PCB : X23(M) Drill Drawing Plots

Hole Size	Hole Count
24mil (0.6mm)	73
31mil (0.8mm)	68
39mil (1.0mm)	36
47mil (1.2mm)	36
59mil (1.5mm)	2
87mil (2.2mm)	6
150mil (3.8mm)	4
Totals	225

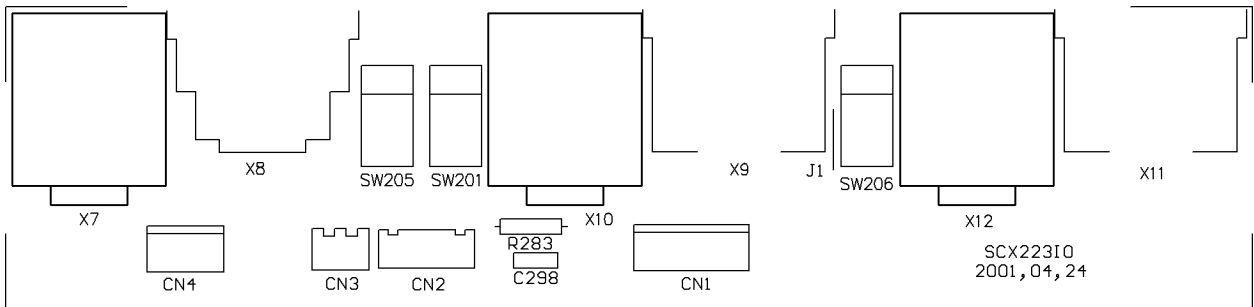
SCX223IO PCB LAYOUT



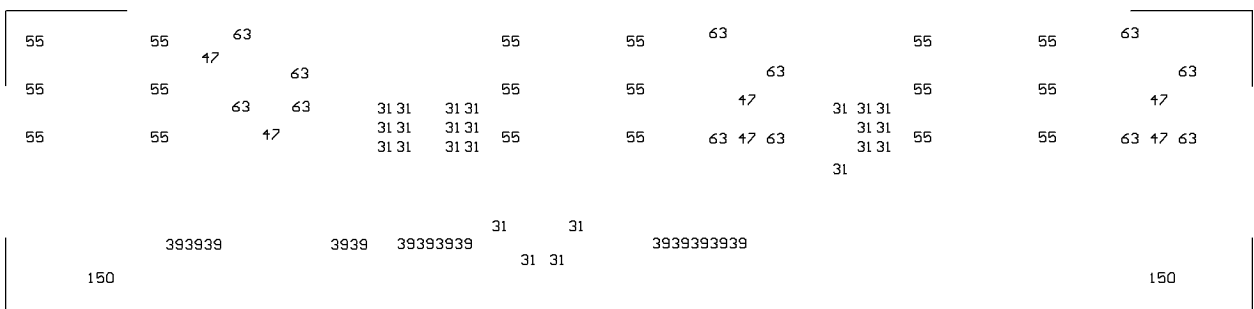
PCB : SCX223IO Bottom Layer



PCB : SCX223IO Bottom Solder Mask



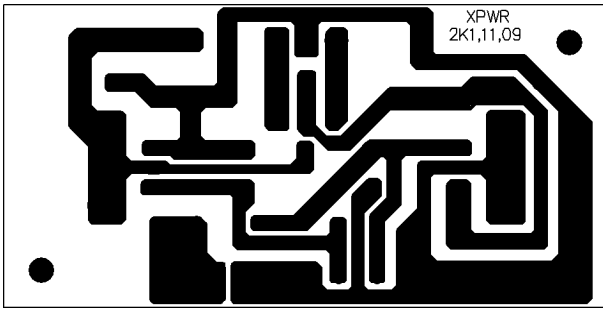
PCB : SCX223IO Top Overlay



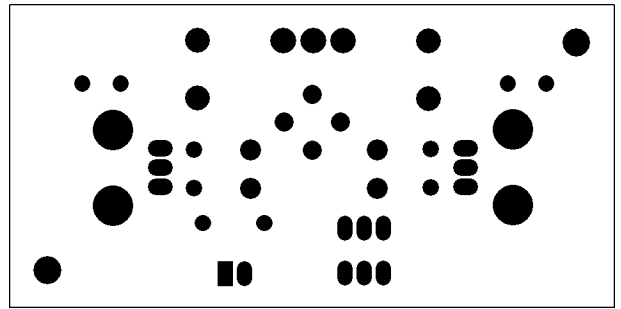
PCB : SCX223IO Drill Drawing Plots

Hole Size	Hole Count
31mil (0.8mm)	24
39mil (1.0mm)	14
47mil (1.2mm)	6
55mil (1.4mm)	18
63mil (1.6mm)	12
150mil (3.8mm)	2
Totals	76

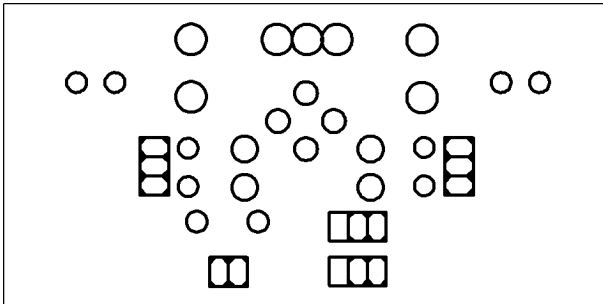
XPWR PCB LAYOUT



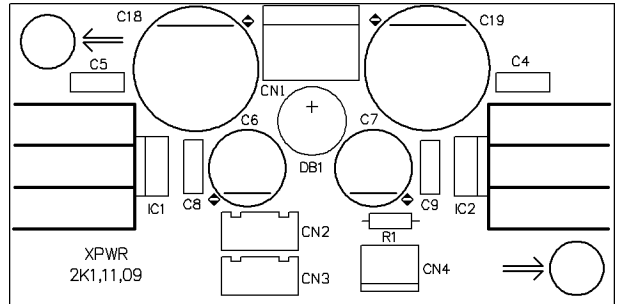
PCB : XPWR Bottom Layer



PCB : XPWR Bottom Solder Mask



PCB : XPWR Bottom Overlay

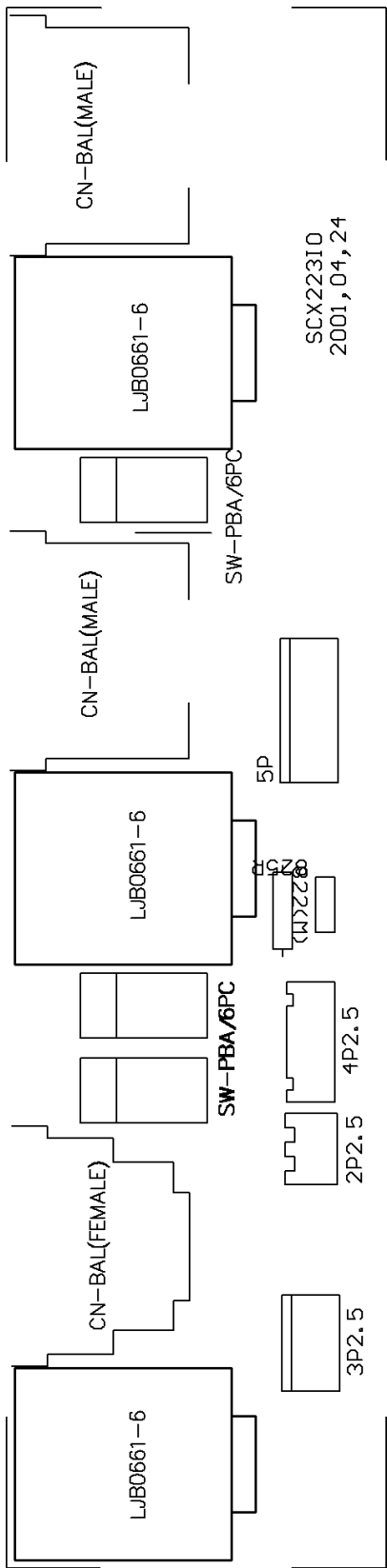


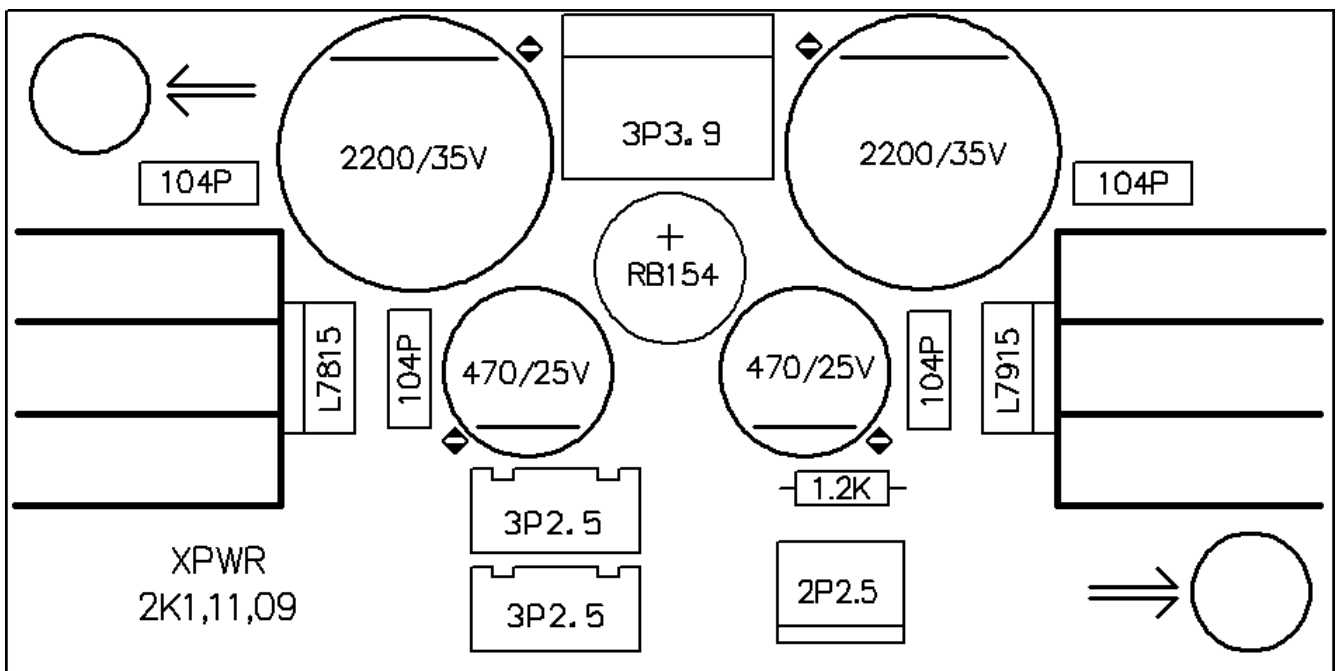
PCB : XPWR Top Overlay

138		39		63	63	63		39	
	31	31		39		39		39	31 31
		98			39	39			98
			39	31	31	39	31	31	39 39
			39	31	31		31	31	39 98
				393939			31	31	
					393939			3939	138

PCB : XPWR Drill Drawing Plots

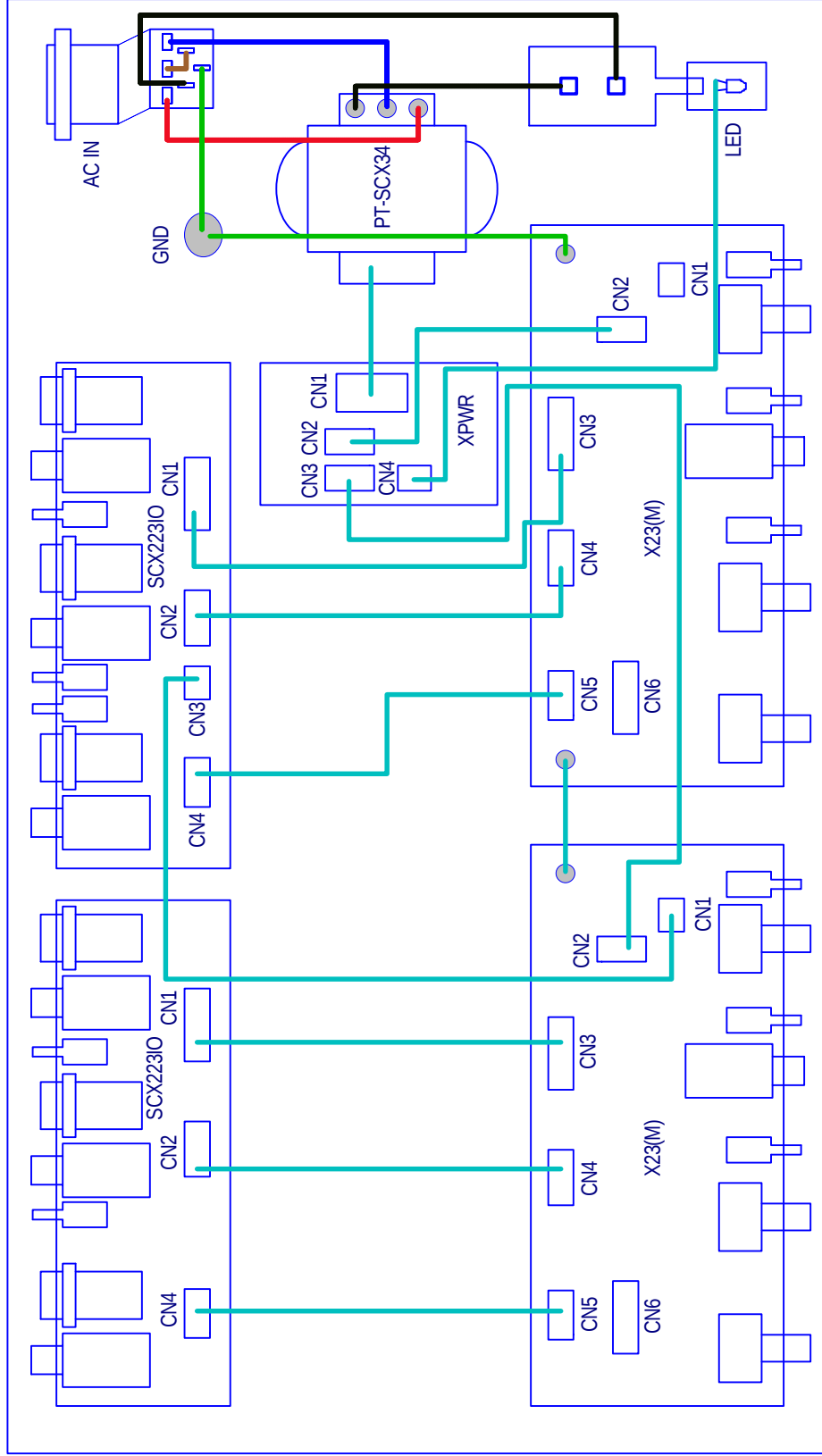
Hole Size	Hole Count
31mil (0.8mm)	14
39mil (1.0mm)	22
63mil (1.6mm)	3
98mil (2.5mm)	4
138mil (3.5mm)	4
Totals	90





5. Wiring Diagram

X23 Wiring Diagram



Title ALTO Mobile : X23 Wiring Diagram

Size A4 Model No: X23 Revision V2.0

Date: 29.Oct.2002 Sheet 1 of 1
 File: X23()Sch Drawn By: TASY J.S.

7. Electrical Parts List

X23-ALTO-230V

Structure Needing Material Detail List

<u>NO.</u>	<u>Midprod NO</u>	<u>Quantity</u>	<u>Unit</u>
-------------------	--------------------------	------------------------	--------------------

NO	Material No	Item Name	Specific
-----------	--------------------	------------------	-----------------

MARK:

MARK:

MARK:

MARK:

MARK:

MARK:

MARK:

MARK:

MARK:

MARK:

MARK:

MARK:

MARK:

MARK:

MARK:

MARK:

MARK:

MARK:

MARK:

MARK:

MARK:

MARK:

MARK:

MARK:

MARK:

NO	Material No	Item Name	Specific
-----------	--------------------	------------------	-----------------

MARK:

MARK:

MARK:

MARK:

MARK:

MARK:

MARK:

MARK:

MARK:

MARK:

MARK:

MARK:

MARK:

MARK:

MARK:

MARK:

MARK:

MARK:

MARK:

MARK:

MARK:

MARK:

MARK:

MARK:

MARK:

<i>NO</i>	<i>Material No</i>	<i>Item Name</i>	<i>Specific</i>
------------------	---------------------------	-------------------------	------------------------

MARK:

MARK:

MARK:

MARK:

MARK:

MARK:

MARK:

MARK:

MARK:

MARK:

MARK:

<i>NO</i>	<i>Material No</i>	<i>Item Name</i>	<i>Specific</i>
------------------	---------------------------	-------------------------	------------------------

MARK:

MARK:

MARK:

MARK:

MARK:

MARK:

MARK:

MARK:

MARK:

<i>NO</i>	<i>Material No</i>	<i>Item Name</i>	<i>Specific</i>
------------------	---------------------------	-------------------------	------------------------

MARK:

MARK:

MARK:

MARK:

MARK:

MARK:

MARK:

MARK:

MARK:

MARK:

MARK:

MARK:

MARK:

MARK:

MARK:

<i>NO</i>	<i>Material No</i>	<i>Item Name</i>	<i>Specific</i>
------------------	---------------------------	-------------------------	------------------------

MARK:

MARK:

MARK:

MARK:

MARK:

MARK:

MARK:

MARK:

MARK:

MARK:

MARK:

MARK:

<i>NO</i>	<i>Material No</i>	<i>Item Name</i>	<i>Specific</i>
------------------	---------------------------	-------------------------	------------------------

MARK:

MARK:

MARK:

MARK:

MARK:

MARK:

MARK:

MARK:

MARK:

MARK:

MARK:

MARK:

NO	Material No	Item Name	Specific
-----------	--------------------	------------------	-----------------

MARK:

MARK:

MARK:

MARK:

MARK:

MARK:

MARK:

MARK:

MARK:

MARK:

MARK:

MARK:

MARK:

MARK:

MARK:

MARK:

MARK:

MARK:

MARK:

MARK:

MARK:

<i>NO</i>	<i>Material No</i>	<i>Item Name</i>	<i>Specific</i>
-----------	--------------------	------------------	-----------------

MARK:

MARK:

MARK:

MARK:

MARK:

MARK:

MARK:

MARK:

MARK:

MARK:

MARK:

MARK:

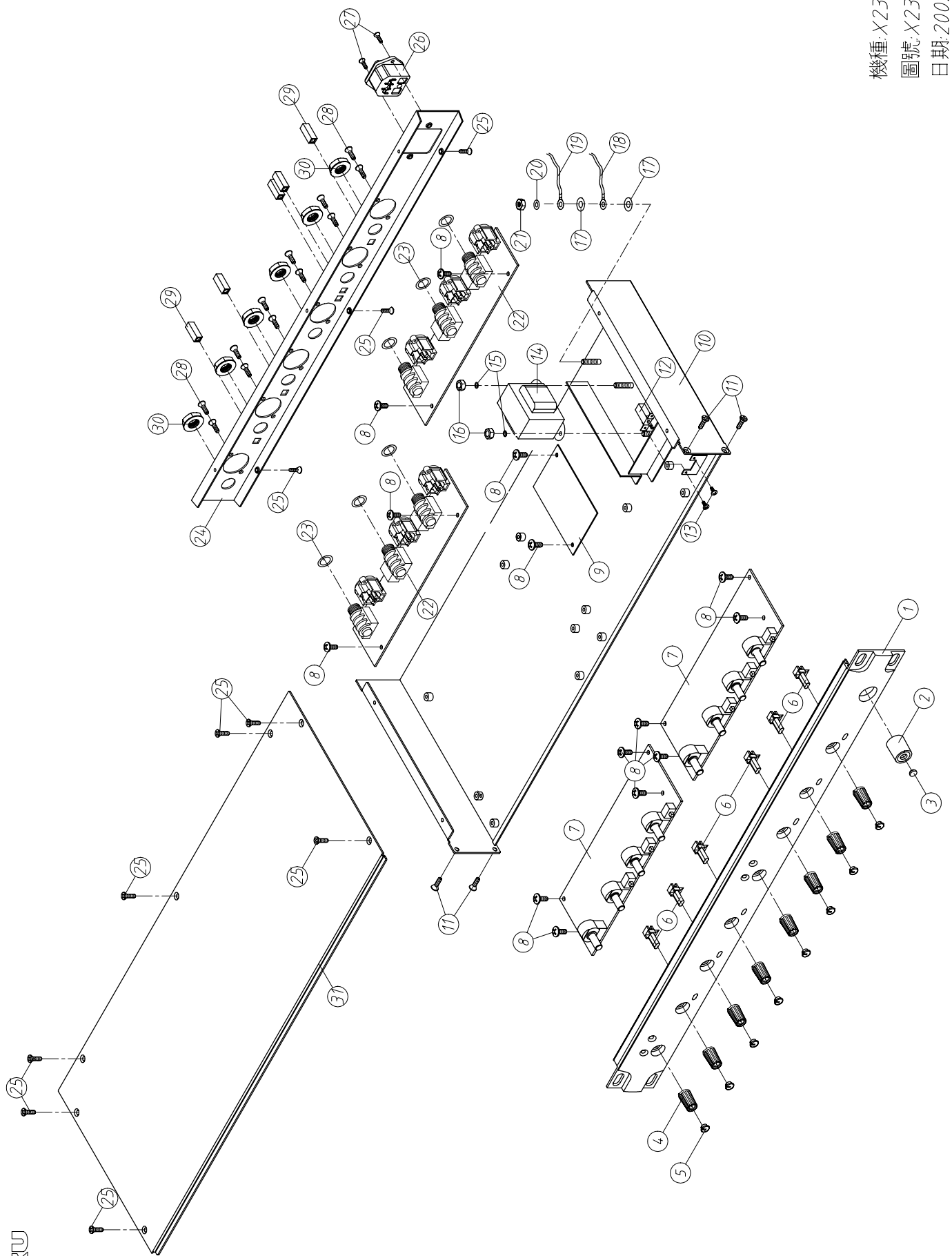
MARK:

MARK:

MARK:

MARK:

8. Exploded Views



SEKAKU

機種: X23
圖號: X23-00
日期: 20020222