

Service Manual

Model: X34SW (3-WAY STEREO PLUS SUBWOOFER)
ACTIVE CROSSOVER



www.altoproaudio.com

Version: 1.1

CONTENTS

- 1. Specification**
- 2. Block Diagram**
- 3. Schematic Diagram**
- 4. Printed Circuit Board**
- 5. Wiring Diagram**
- 6. ~~Test Procedure~~**
- 7. Electrical Parts List**
- 8. Exploded Views & Mechanical Parts List**
- 9. Notes**

1. SPECIFICATION (X34SW)

Electrical

Subwoofer Frequency Range	50Hz ~ 250Hz
Low - Mid Frequency Range	70Hz ~ 1KHz
Mid - High Frequency Range	480Hz ~ 7KHz
THD	<0.05%
S/N Ratio	>80dB

Controls

Input Level	continuously variable
Output level	Sub,Low,Mid,High continuously variable
Low Cut	Front panel switches
Phase	Front panel switches

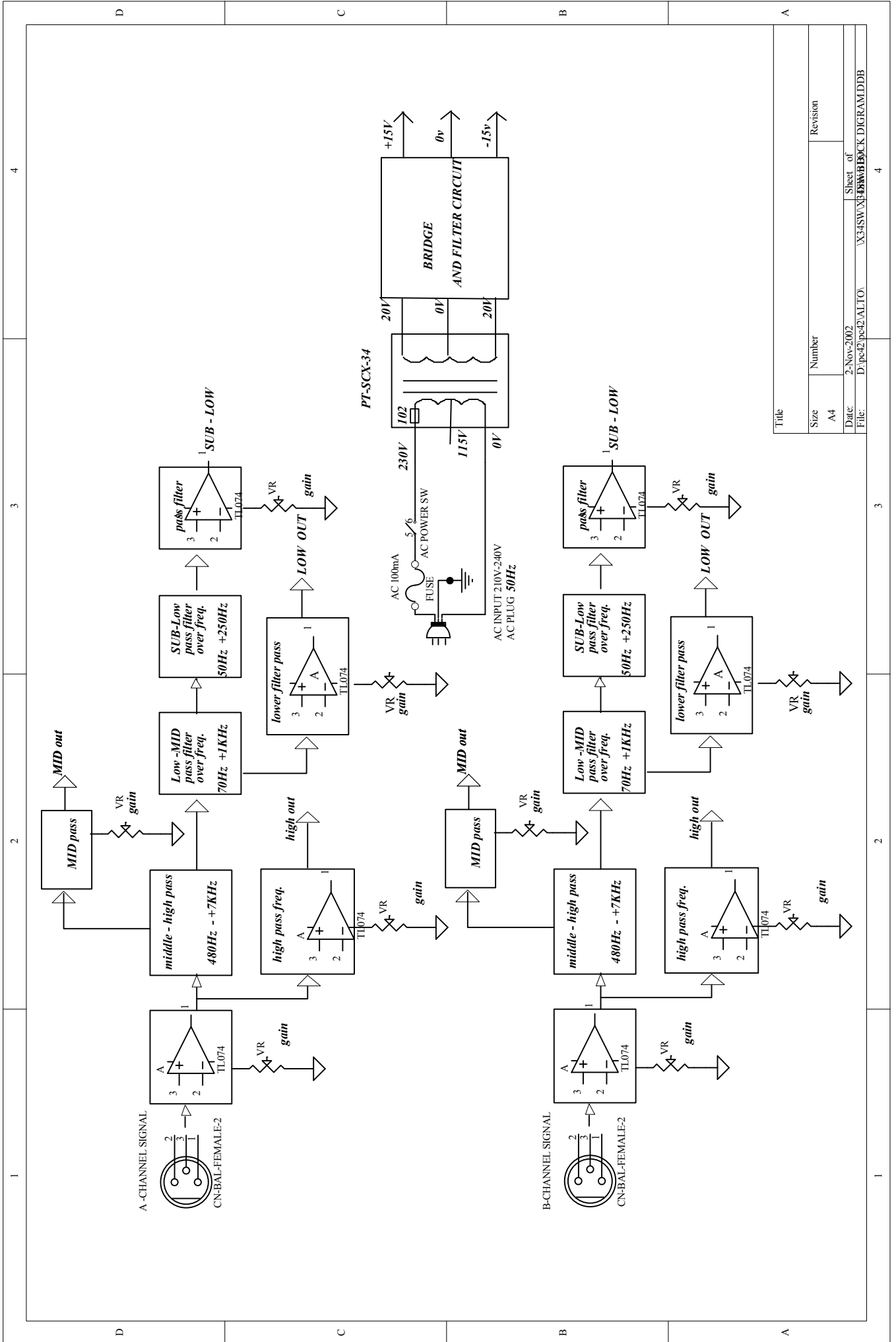
Power supply

Connector type	3-pole IEC , grounded
Type	Servo controlled , stabilized
Mains supply	95-120V~/210-240V~,60-50Hz
Power Rating	8W

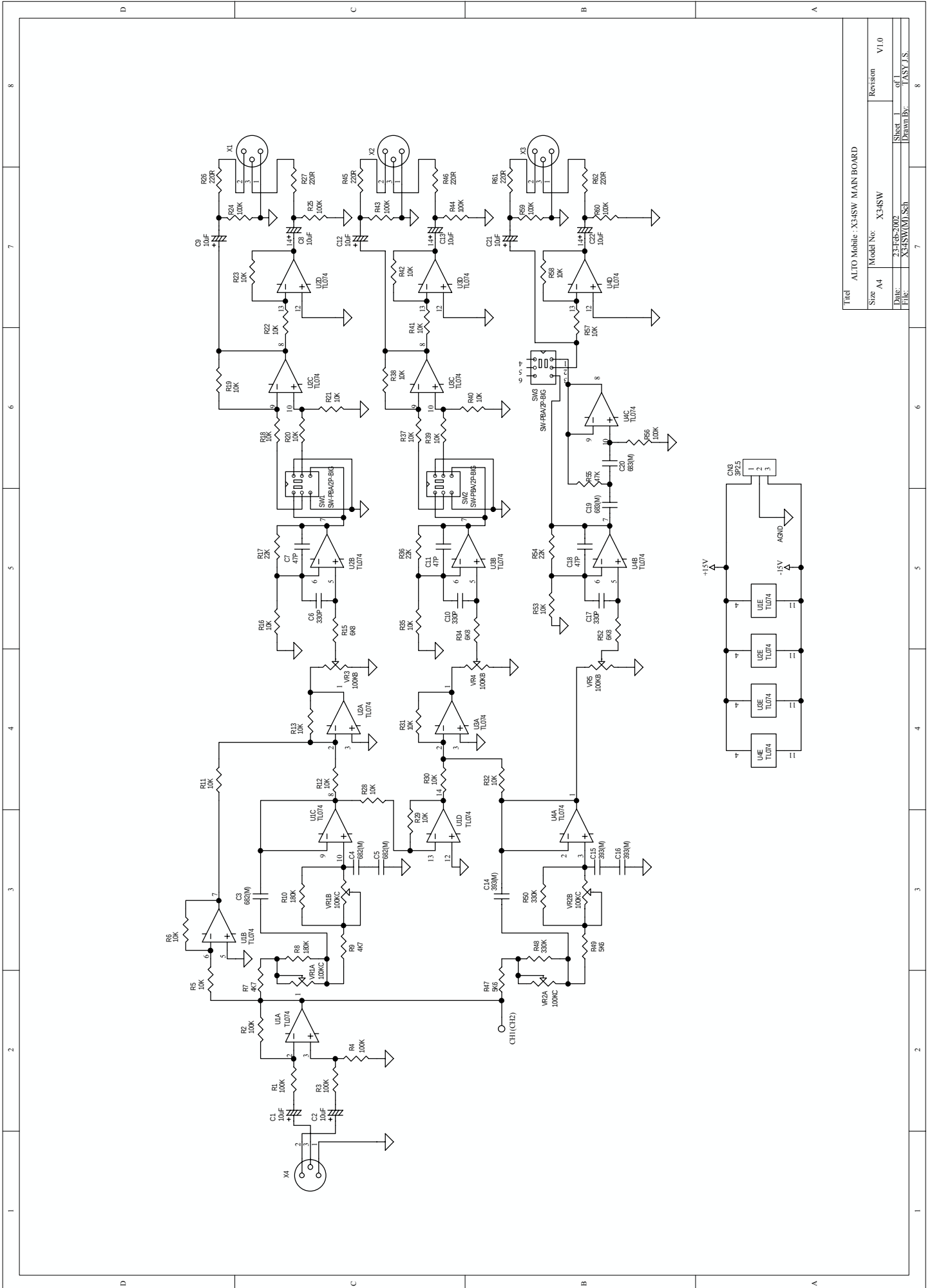
Physical

Dimensions	483(W)×194.5(D)×44(H)mm(19"×7.7"×1.7")
Weight	3.0 kg(6.62lb)

2. Block Diagram



3. Schematic Diagram



Title: ALTO Mobile X34SW MAIN BOARD			
Size: A4	Model No: X34SW	Revision: V1.0	
Date: 22-FEB-2007	Sheet: 1	of 1	
File: X34SW(M)U3.Sch		Drawn By: JASTY J.S.	

8

7

6

5

4

3

2

1

8

7

6

5

4

3

2

1

D

C

B

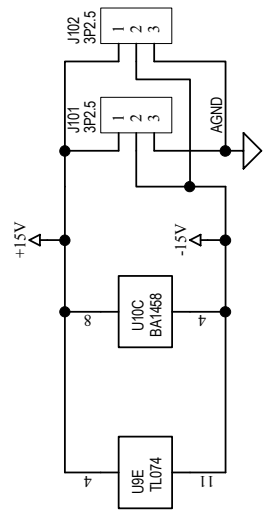
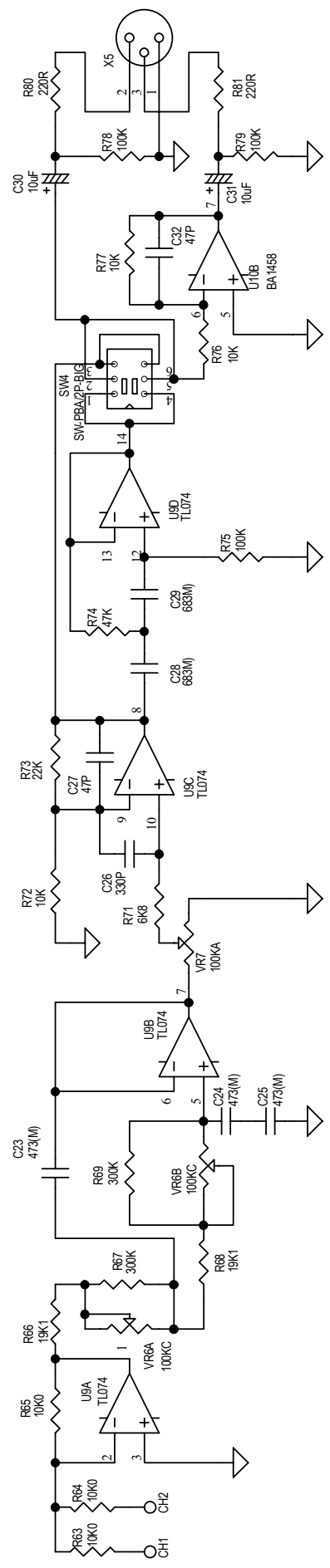
A

D

C

B

A



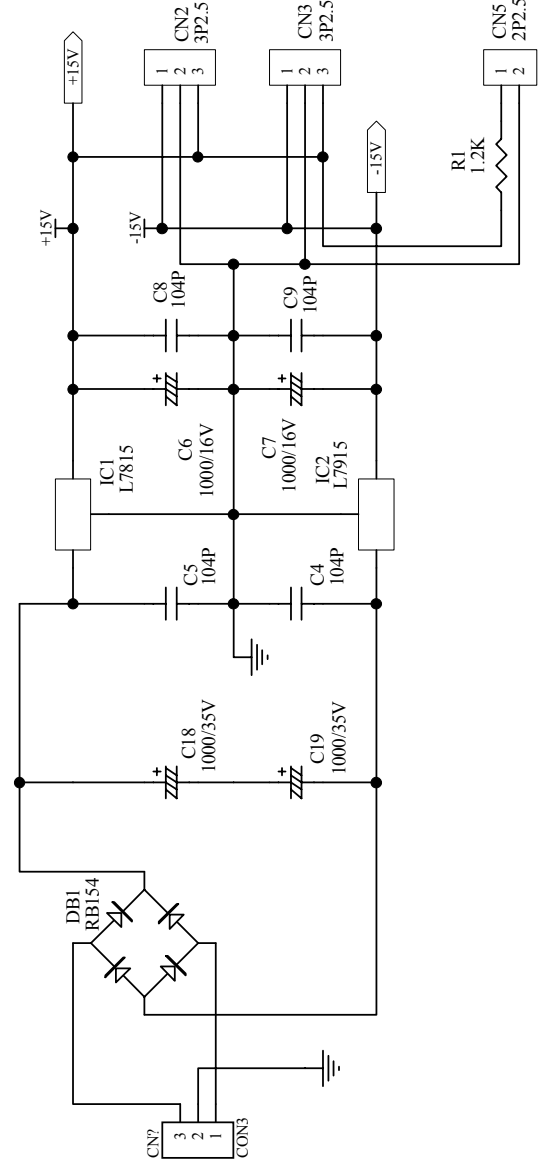
Titel			
ALTO Mobile : X34SW SUB WOOFER BOARD			
Size	Model No:	Revision	V1.0
A4	X34SW		
Date:	27-Jan-2002	Sheet	1 of 1
File:	X34(SUB).Sch	Drawn By:	TASY J.S.

D

C

B

A



Title
SCX系列] POWER Schematic

Size	Number	Revision
A4		
Date:	27-Jan-2002	
File:	D:\pc42\pc42\pc42\IS-OVER\SCX202\SCX202\SCX202S.ddb	

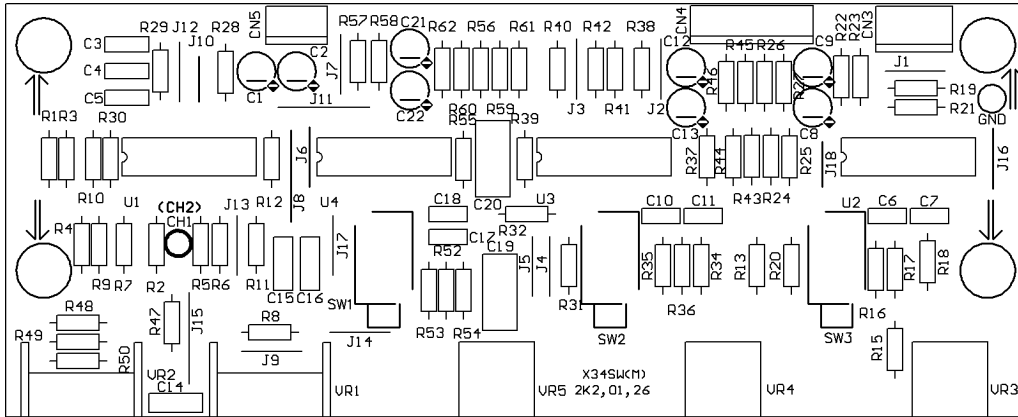
D

C

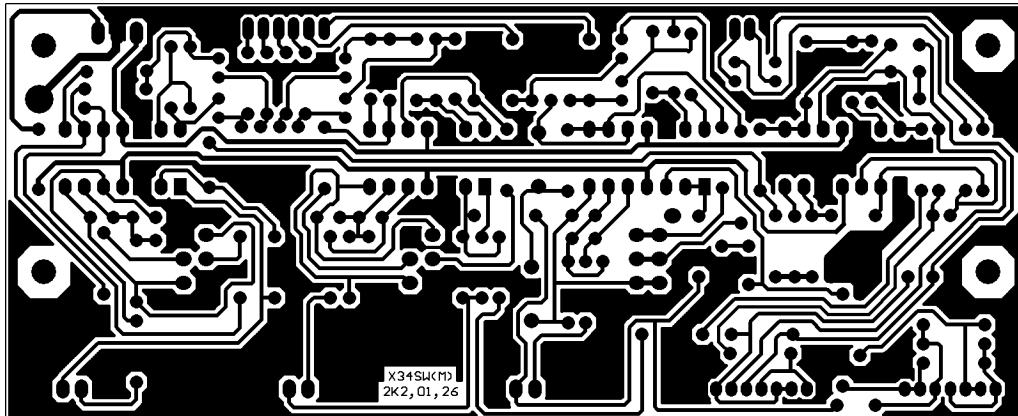
B

A

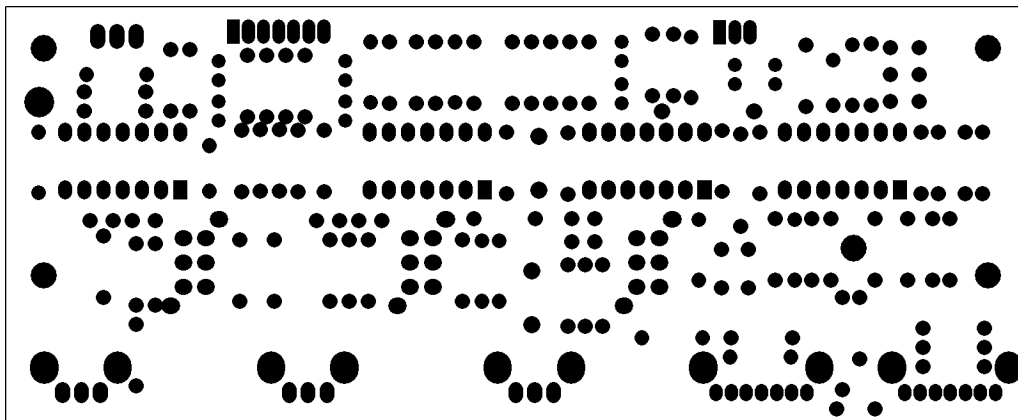
X34SW(M) PCB LAYOUT



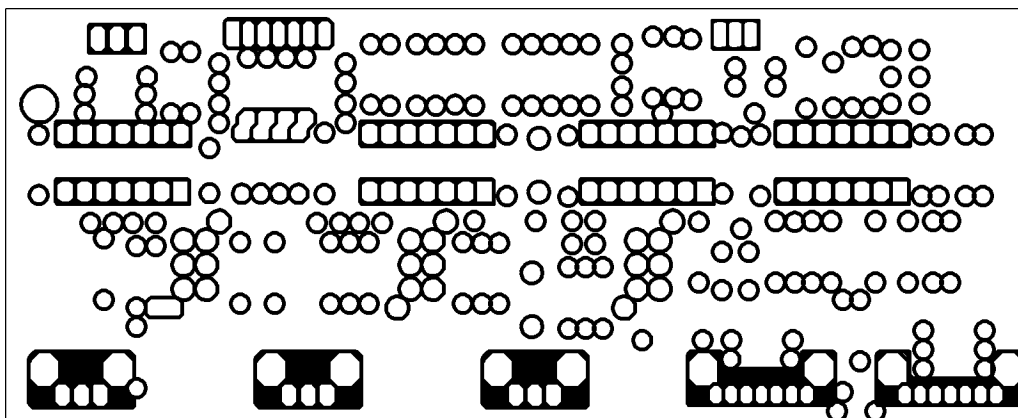
PCB : X34SW(M) Top Overlay



PCB : X34SW(M) Bottom Layer

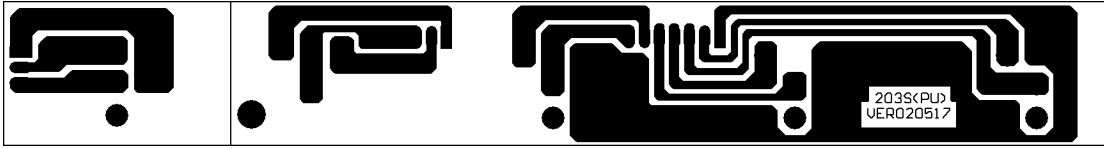


PCB : X34SW(M) Bottom Solder Mask

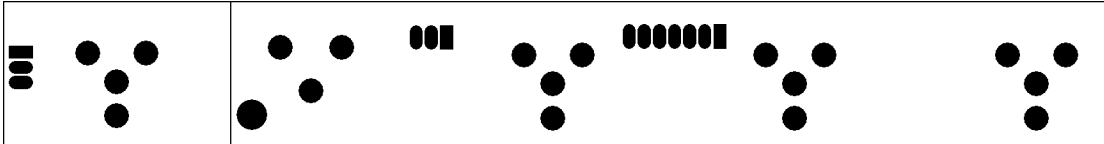


PCB : X34SW(M) Bottom Overlay

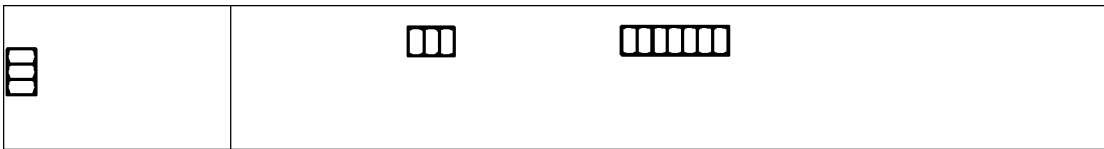
203S(PU) PCB LAYOUT



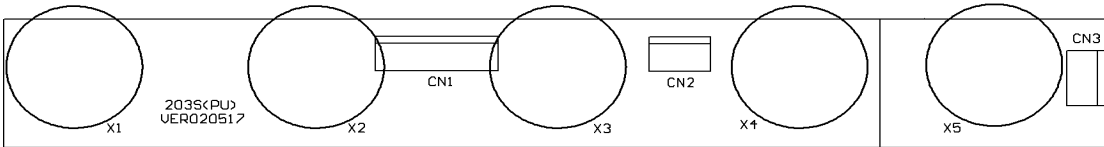
PCB : 203S(PU) Bottom Layer



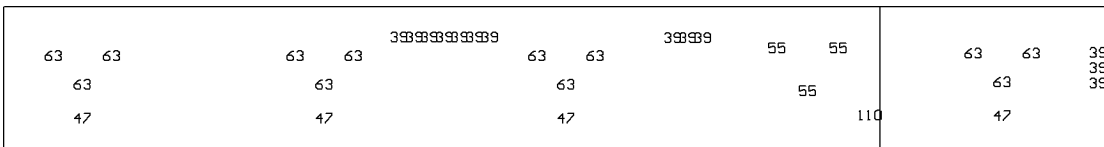
PCB : 203S(PU) Bottom Solder Mask



PCB : 203S(PU) Bottom OverLayer



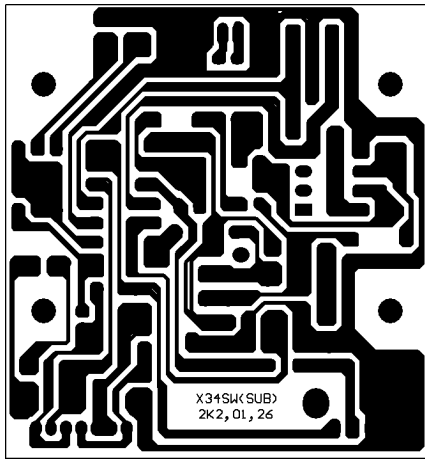
PCB : 203S(PU) Top Overlay



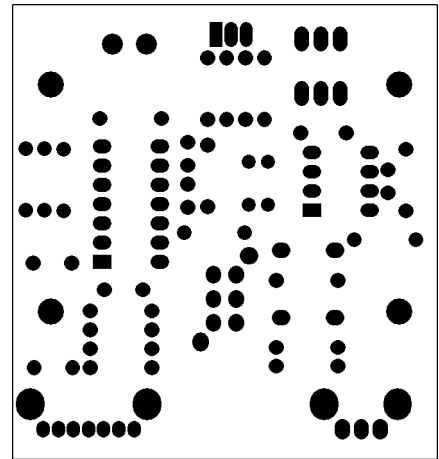
PCB : 203S(PU) Drill Drawing Plots

Hole Size	Hole Count
39mil (1.0mm)	13
47mil (1.2mm)	4
55mil (1.4mm)	3
63mil (1.6mm)	12
110mil (1.8mm)	1
Totals	33

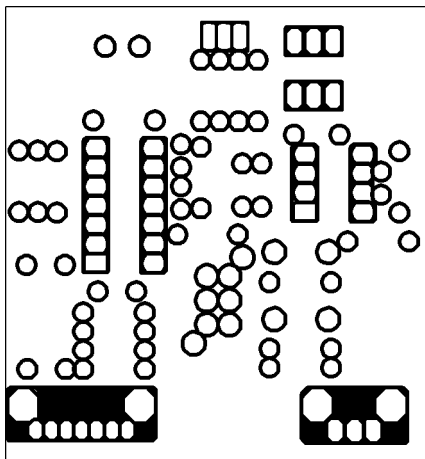
X34SW(SUB) PCB LAYOUT



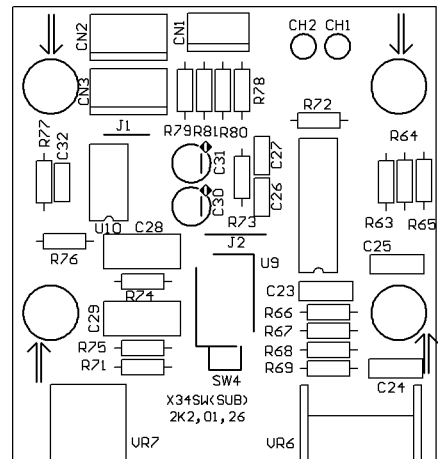
PCB : X34SW(SUB) Bottom Layer



PCB : X34SW(SUB) Bottom Solder Mask



PCB : X34SW(SUB) Bottom Overlay

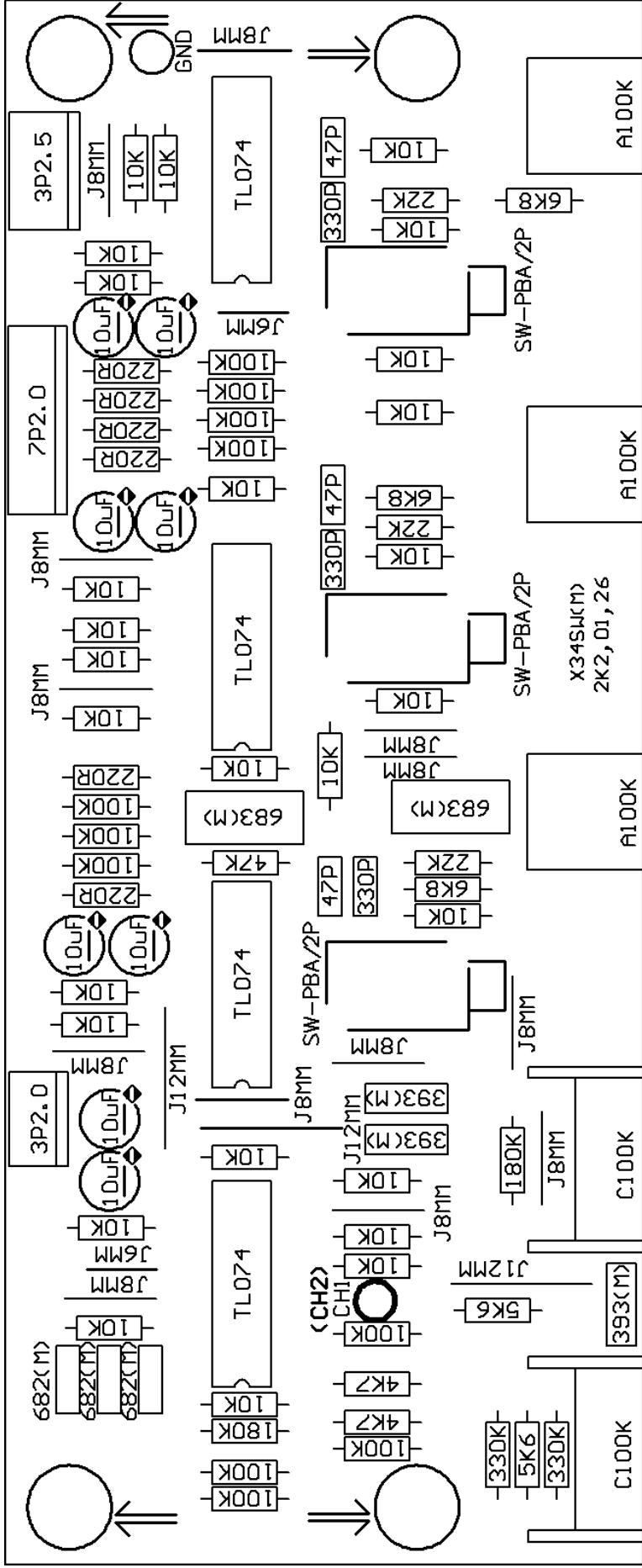


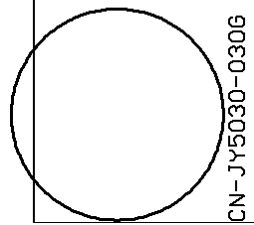
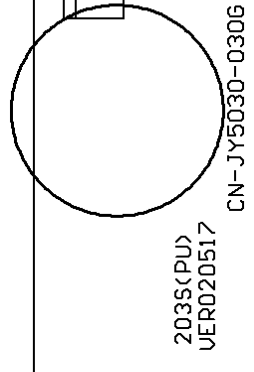
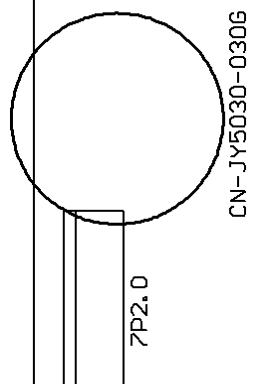
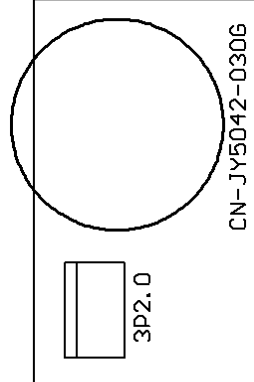
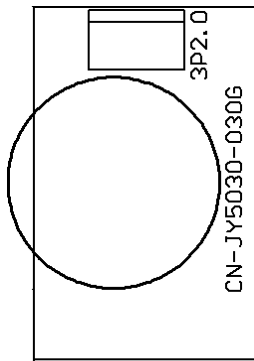
PCB : X34SW(SUB) Top Overlay

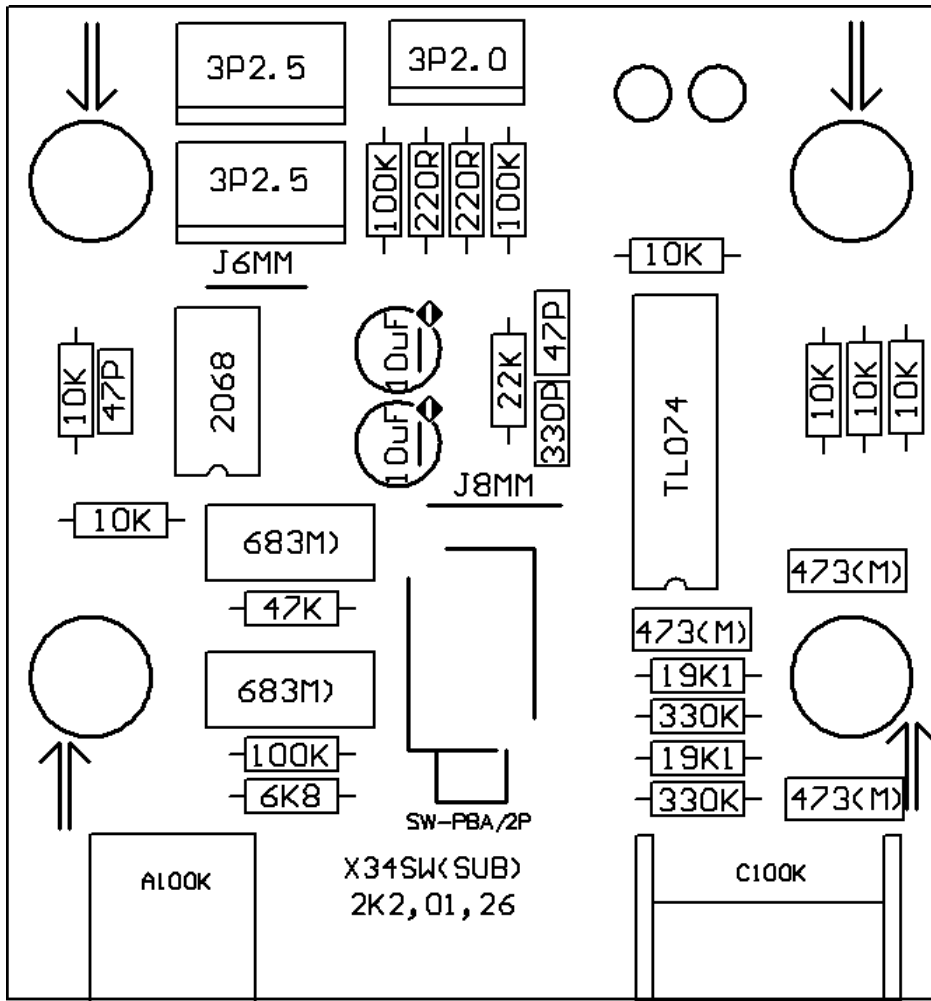
	393939	399999	47	47	
		31 31 31 31			
138	393939				138
	31	31	31 31 31 31	31	31
31	31	31	31 31	31 31	31 31 31
	31 31	31	31 31	31 31	31
	31 31	31	31 31	31 31	31 31 31
31	31	31	31	31	31
	31	31	47	31	31
	31	31	47 47	31	31
138	31	31	47 47	31	31 138
	31	31	47	31	31
	31	31		31	31 31 31
87	87			87	87
	393939			3999999999	

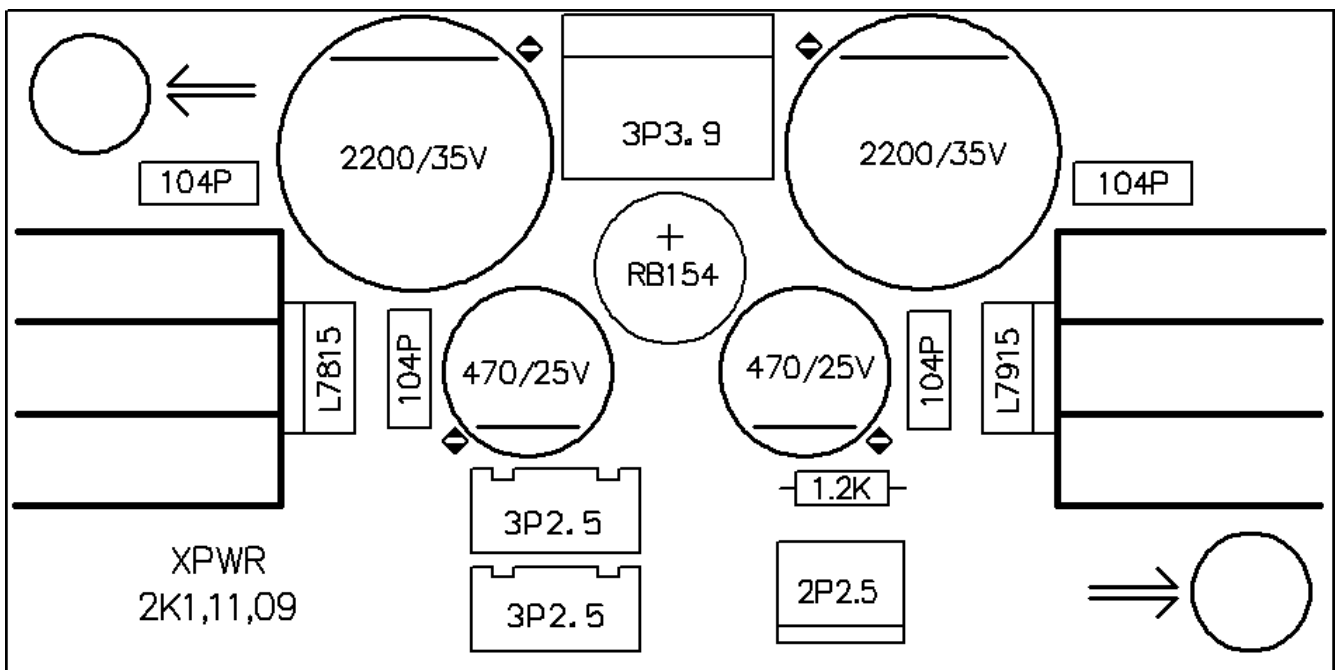
PCB : X34SW(SUB) Drill Drawing Plots

Hole Size	Hole Count
31mil (0.8mm)	82
39mil (1.0mm)	19
47mil (1.2mm)	10
87mil (2.2mm)	4
138mil (3.5mm)	4
Totals	119



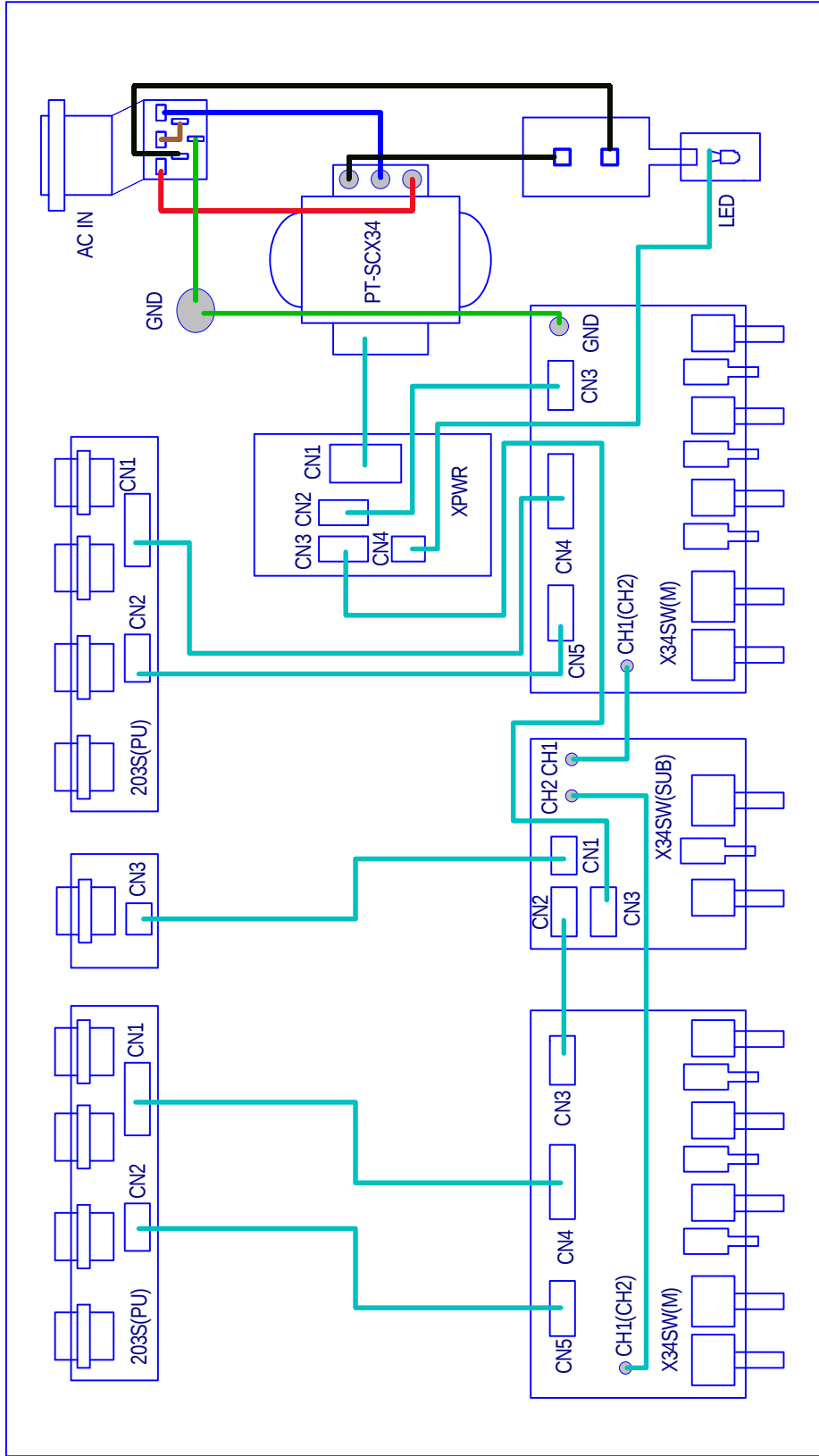
	 <p>2035<PU> VER020517</p>			
CN-JY5030-030G	CN-JY5030-030G	CN-JY5030-030G	CN-JY5042-030G	CN-JY5030-030G





5. Wiring Diagram

X34SW Wiring Diagram



Title ALTO Mobile : X34SW Wiring Diagram

Size A4 Model No: X34SW Revision V2.0

Date: 6Nov2002 Sheet 1 of 1
 File: X34SW(-).Sch Drawn By: TASY J.S.

7. Electrical Parts List

X34SW-ALTO-230V

Structure Needing Material Detail List

<u>NO.</u>	<u>Midprod NO</u>	<u>Quantity</u>	<u>Unit</u>
------------	-------------------	-----------------	-------------

NO	Material No	Item Name	Specific
-----------	--------------------	------------------	-----------------

MARK:

MARK:

MARK:

MARK:

MARK:

MARK:

MARK:

MARK:

MARK:

MARK:

MARK:

MARK:

MARK:

MARK:

MARK:

MARK:

MARK:

MARK:

MARK:

MARK:

MARK:

MARK:

MARK:

MARK:

MARK:

NO	Material No	Item Name	Specific
-----------	--------------------	------------------	-----------------

MARK:

MARK:

MARK:

MARK:

MARK:

MARK:

MARK:

MARK:

MARK:

MARK:

MARK:

MARK:

MARK:

MARK:

MARK:

MARK:

MARK:

MARK:

MARK:

MARK:

MARK:

MARK:

MARK:

MARK:

MARK:

<i>NO</i>	<i>Material No</i>	<i>Item Name</i>	<i>Specific</i>
------------------	---------------------------	-------------------------	------------------------

MARK:

MARK:

MARK:

<i>NO</i>	<i>Material No</i>	<i>Item Name</i>	<i>Specific</i>
------------------	---------------------------	-------------------------	------------------------

MARK:

MARK:

MARK:

MARK:

MARK:

MARK:

MARK:

MARK:

<i>NO</i>	<i>Material No</i>	<i>Item Name</i>	<i>Specific</i>
-----------	--------------------	------------------	-----------------

MARK:

MARK:

MARK:

MARK:

MARK:

MARK:

MARK:

MARK:

MARK:

MARK:

MARK:

MARK:

MARK:

MARK:

MARK:

<i>NO</i>	<i>Material No</i>	<i>Item Name</i>	<i>Specific</i>
------------------	---------------------------	-------------------------	------------------------

MARK:

MARK:

MARK:

MARK:

MARK:

<i>NO</i>	<i>Material No</i>	<i>Item Name</i>	<i>Specific</i>
------------------	---------------------------	-------------------------	------------------------

MARK:

MARK:

MARK:

MARK:

MARK:

NO	Material No	Item Name	Specific
-----------	--------------------	------------------	-----------------

MARK:

MARK:

MARK:

MARK:

MARK:

MARK:

MARK:

MARK:

MARK:

MARK:

MARK:

MARK:

MARK:

MARK:

MARK:

MARK:

MARK:

MARK:

MARK:

MARK:

MARK:

MARK:

MARK:

<i>NO</i>	<i>Material No</i>	<i>Item Name</i>	<i>Specific</i>
------------------	---------------------------	-------------------------	------------------------

MARK:

MARK:

MARK:

MARK:

MARK:

NO	Material No	Item Name	Specific
-----------	--------------------	------------------	-----------------

MARK:

MARK:

MARK:

MARK:

MARK:

MARK:

MARK:

MARK:

MARK:

MARK:

MARK:

MARK:

MARK:

MARK:

MARK:

MARK:

MARK:

MARK:

MARK:

MARK:

MARK:

MARK:

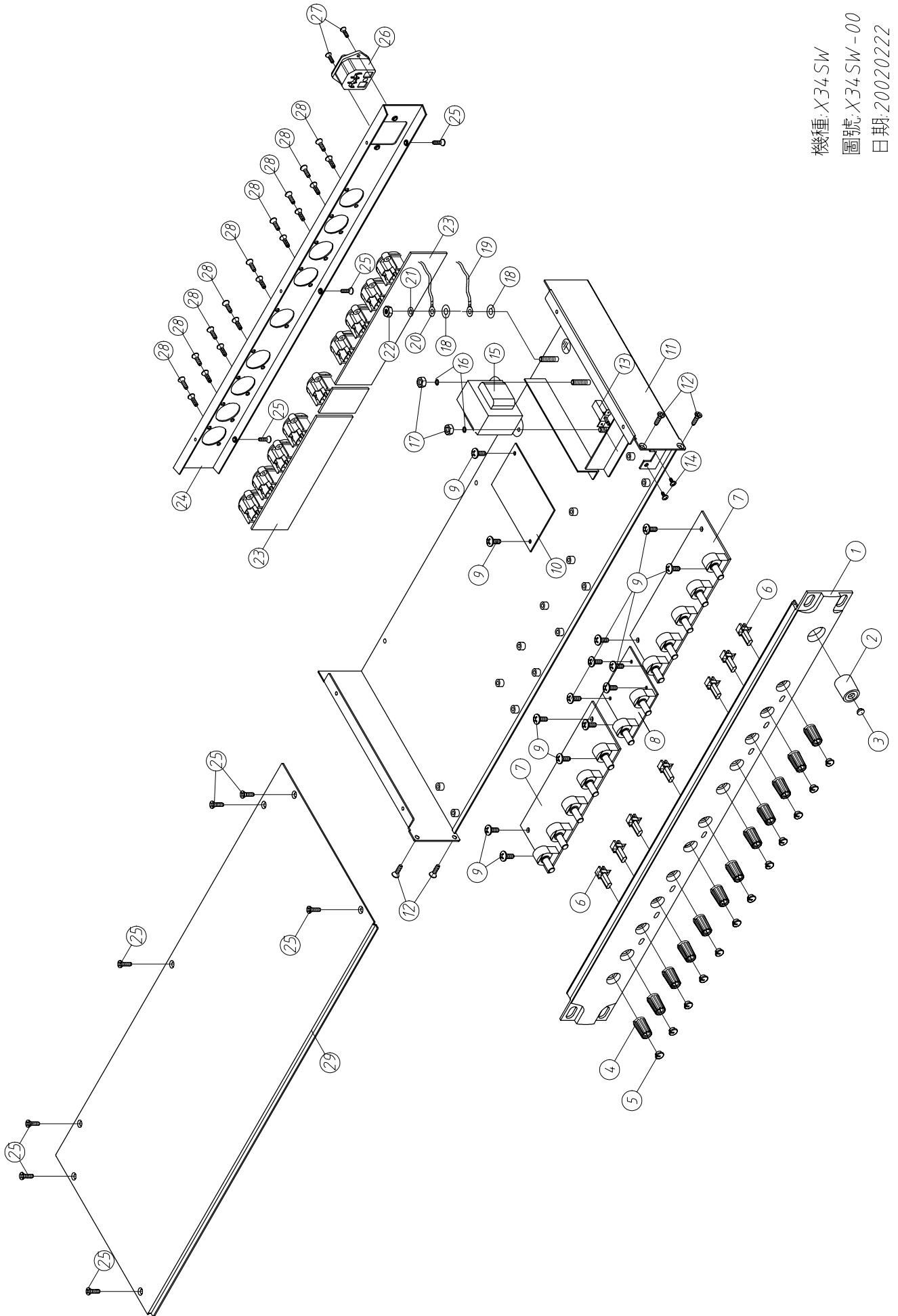
MARK:

NO ***Material No*** ***Item Name*** ***Specific***

MARK:

8. Exploded Views

SEKAKU



機種: X34SW
圖號: X34SW-00
日期: 20020222