

# **AMC**

## **SERVICE MANUAL**

# **2100**

## **STEREO POWER AMPLIFIER**

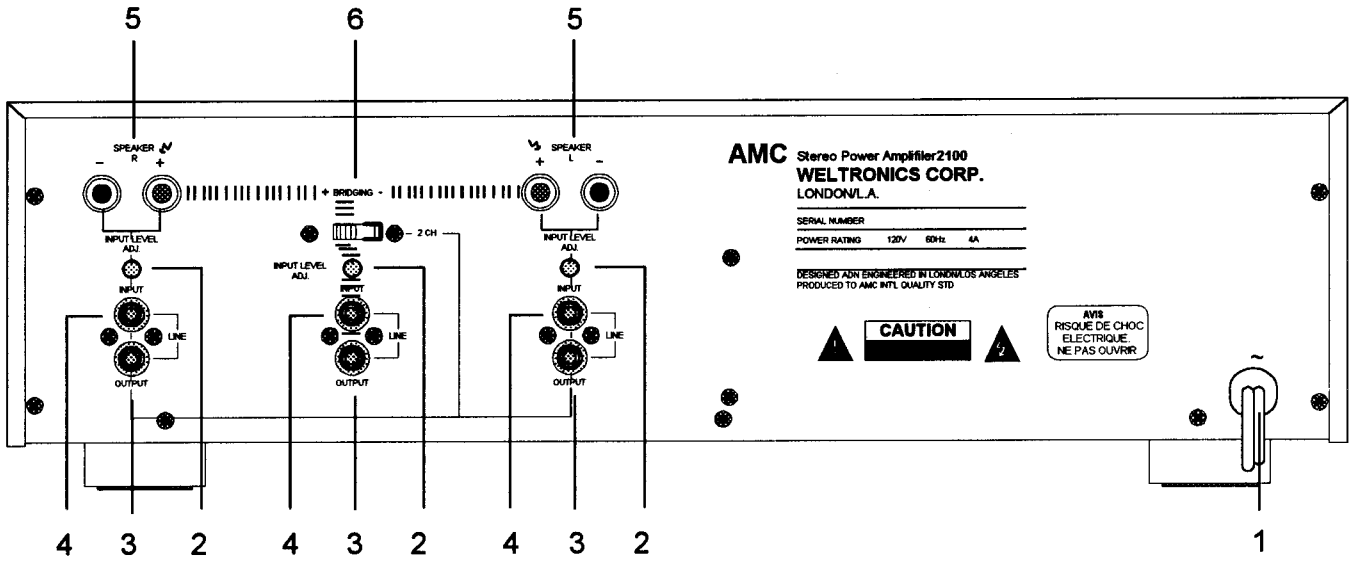
# CONTENTS

DESCRIPTION	PAGE
SPECIFICATIONS .....	3
REAR PANEL CONNECTIONS/FRONT PANEL CONTROLS .....	4
AMPLIFIER ADJUSTMENT.....	5
SCHEMATIC DIAGRAM .....	6-7
PCB LAYOUT .....	8-10
MAINS WIRING INSTRUCTION .....	11
SERVICE PARTS LIST .....	12-13



# REAR PANEL CONNECTIONS/FRONT PANEL CONTROLS

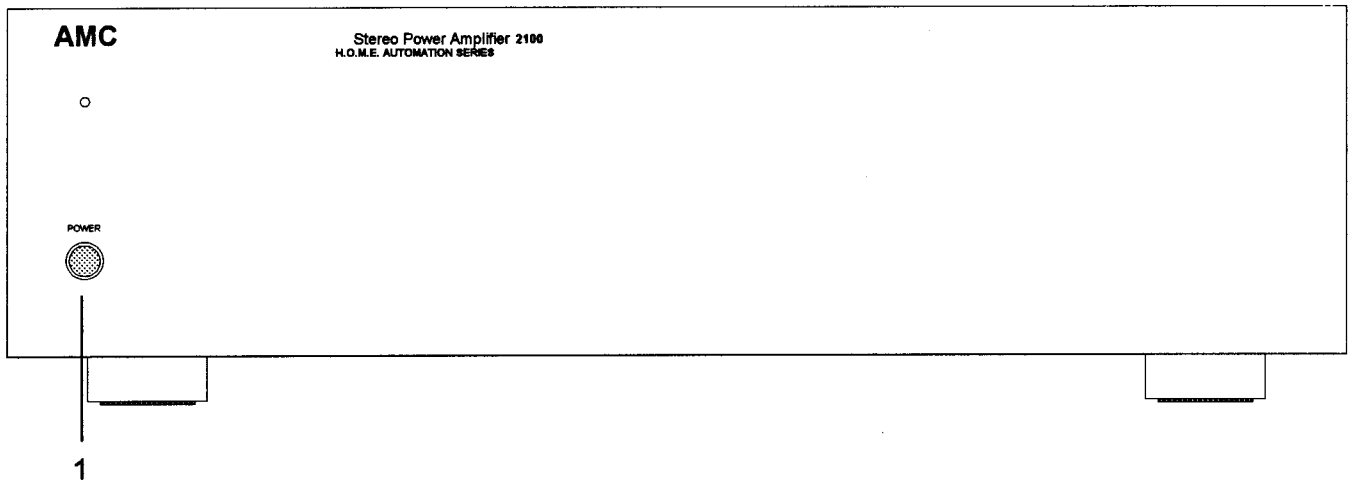
## REAR PANEL



- 1.AC LINE CORD
- 2.INPUT LEVEL CONTROLS
- 3.LINE OUTPUTS

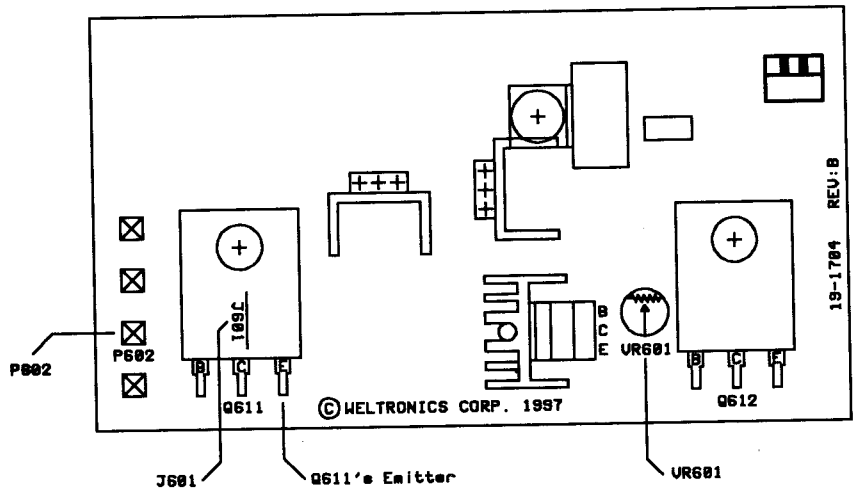
- 4.LINE INPUTS
- 5.LOUDSPEAKER TERMINALS
- 6.BRIDGING/2CH "MODE" SWITCH

## FRONT PANEL



- 1.POWER SWITCH

# AMPLIFIER ADJUSTMENT



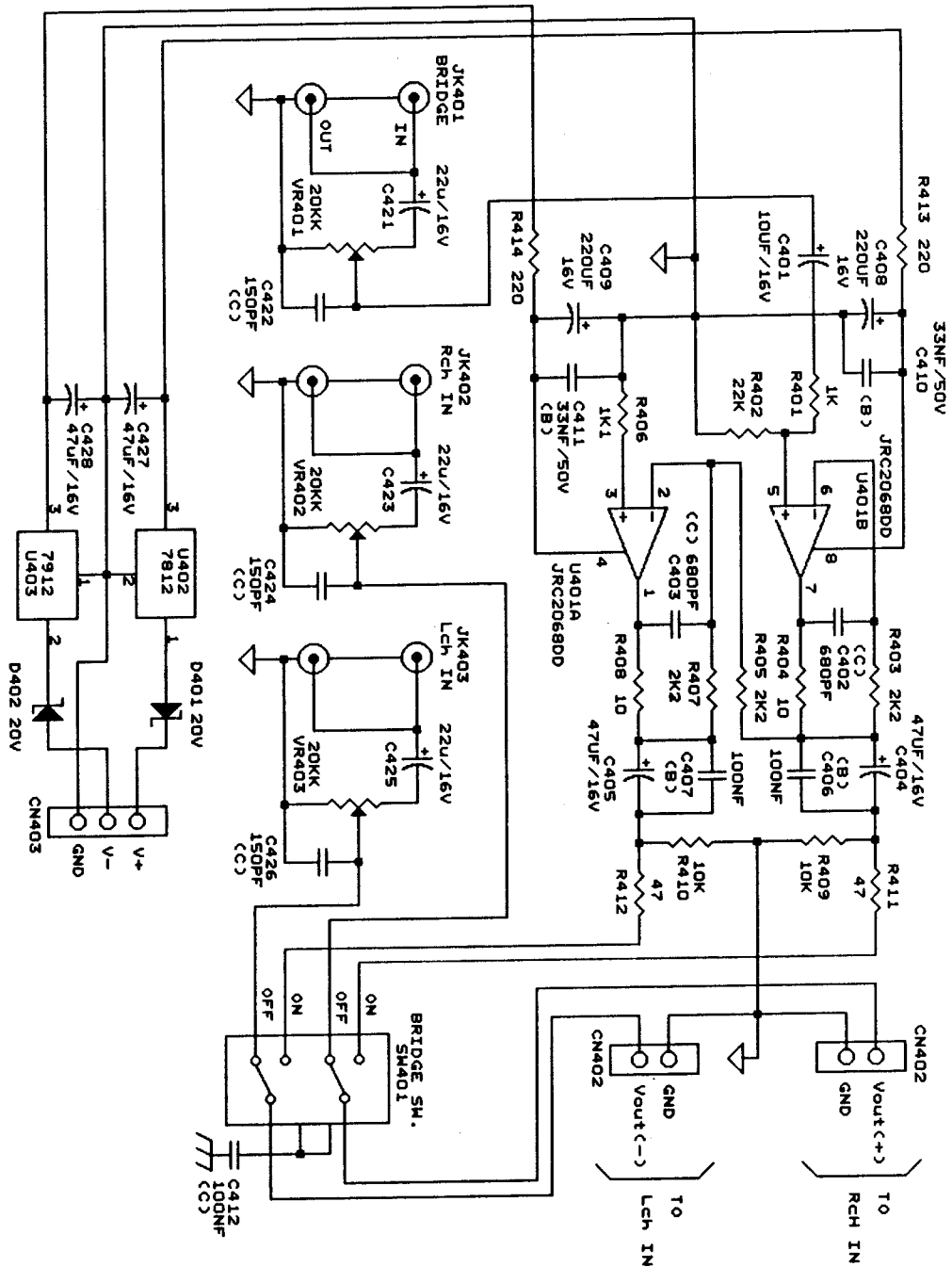
## A. IDLE CURRENT ADJUSTMENT

1. Switch the unit off and disconnect the jumper J601.
2. Connect DMM across P602(B+) and Q611's Emitter, adjust VR601 for reading of  $30 \pm 5\text{mV}$ .
3. Repeat above procedures for each amplifier module.

## B. FINAL ADJUSTMENT

1. Leave power on for minimum 5 minutes.
2. Repeat idle current adjustments.

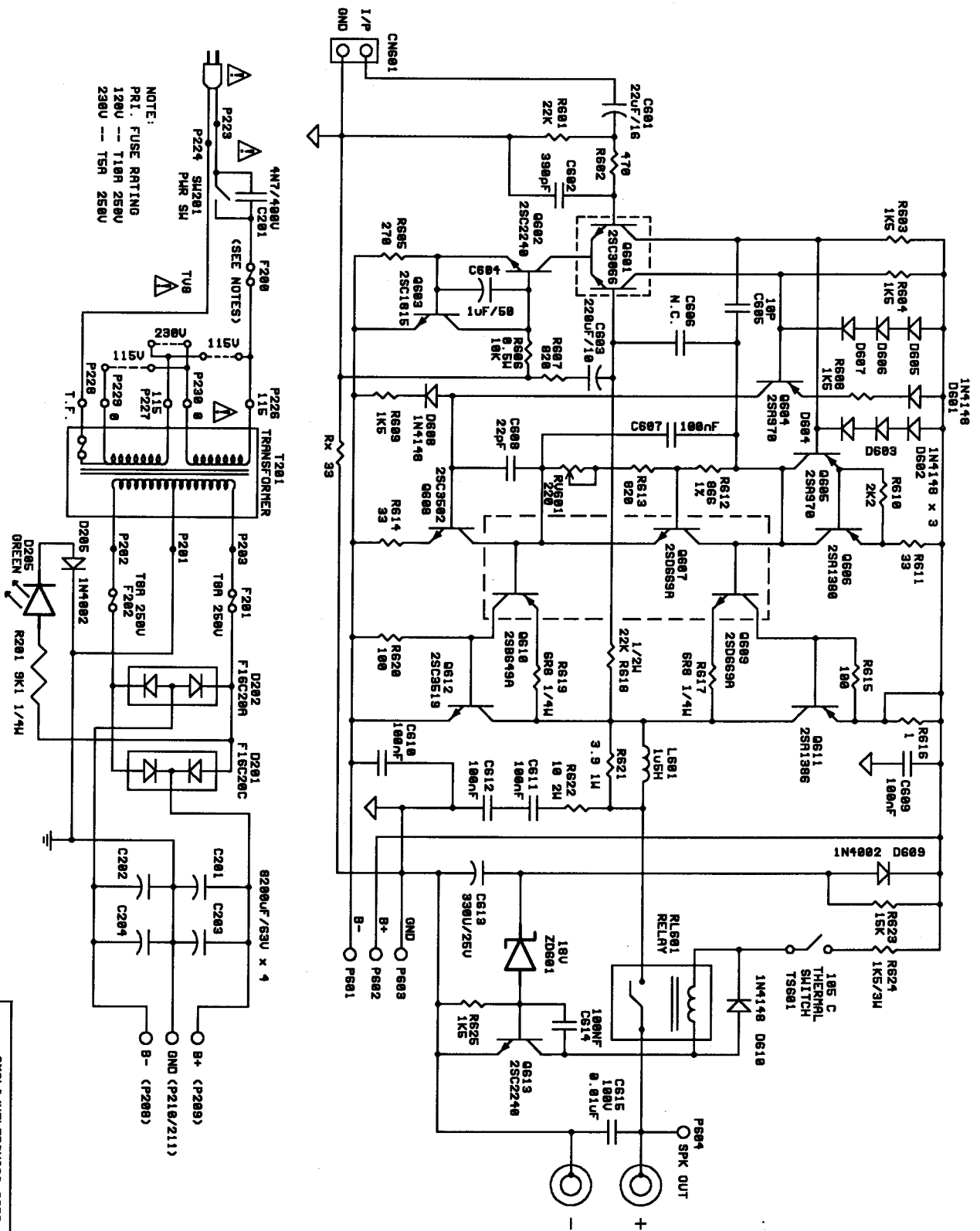
# SCHEMATIC DIAGRAM (INPUT AND BRIDGING)



- P.S.: 1. ALL RESISTORS ARE METAL FILM, 1/6W AND +/-1%.
2. (CB) MEANS POLYESTER FILM CAP. IN BOX TYPE.
3. (CC) MEANS CERAMIC CAPACITOR OR MULTILAYER CERAMIC CAPACITOR.

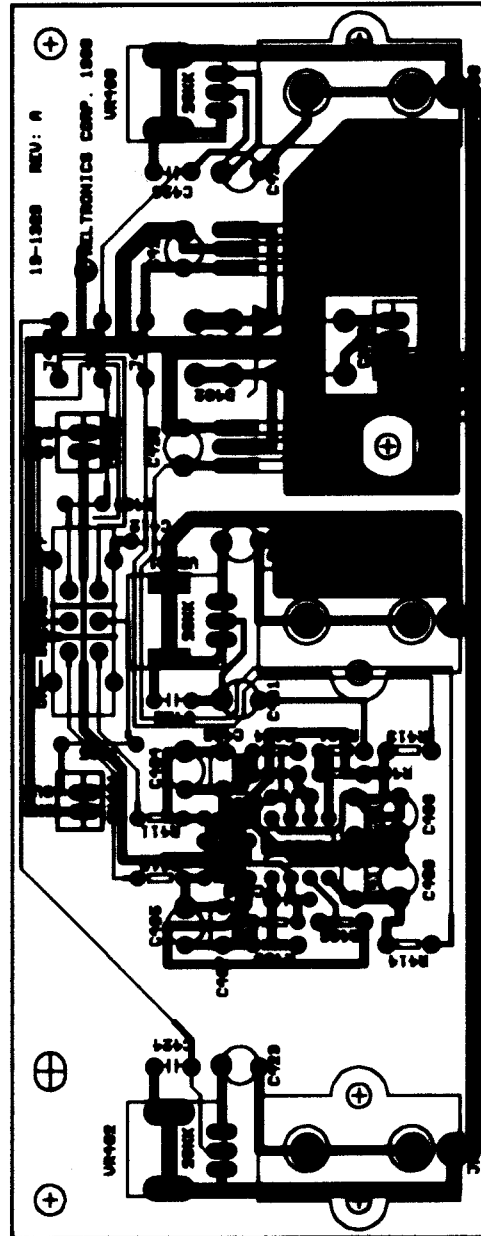
Title		ANCLI INTERNATIONAL CORP.	
Size		2100 INPUT/BRIDGING PCB	
Document Number		984171	
Rev		A	
Date:		April 17, 1998 Sheet 1 of 1	

# SCHEMATIC DIAGRAM (AMPLIFIER & POWER SUPPLY)



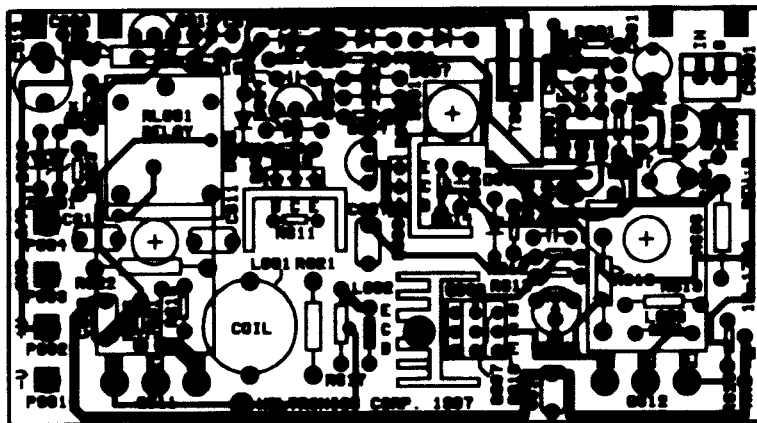
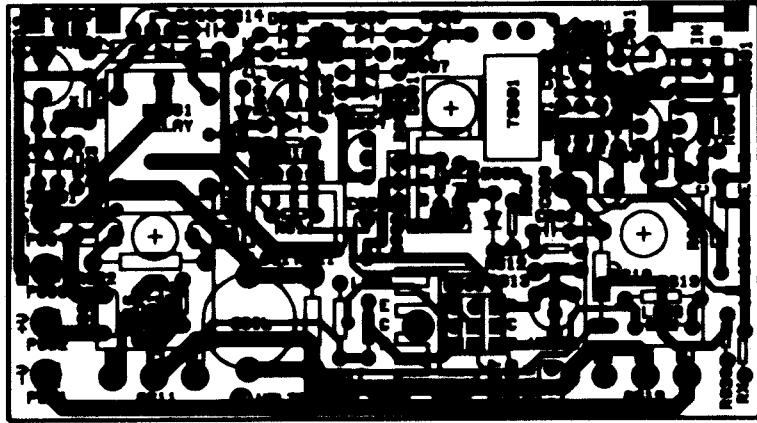
ANCLIMELTRONICS CORP.  
 TITLE: 2100 AMP & PS SECTION  
 DOCUMENT NUMBER: 40293101.90 REV: F  
 DATED: 1998/4/20 SHEET 1 OF 1

# PCB LAYOUT: INPUT AND BRIDGING (90-1329)





**PCB LAYOUT: AMPLIFIER (90-1704)**

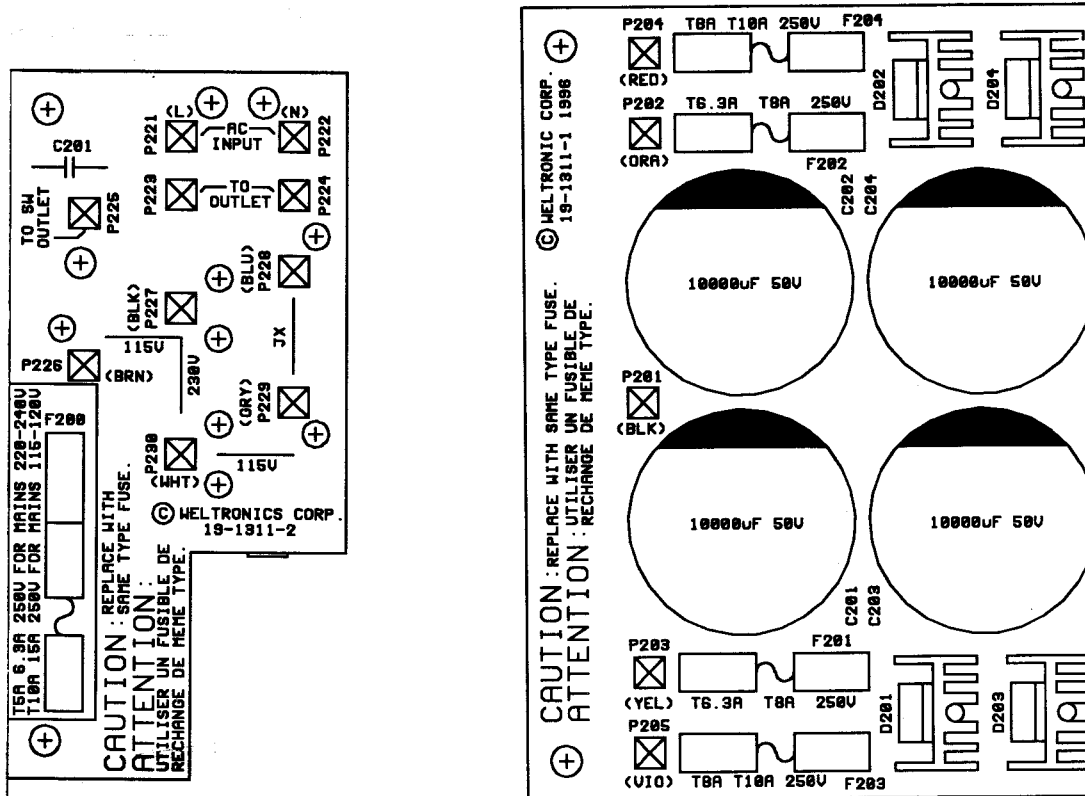




# MAINS WIRING INSTRUCTION

1. The power transformer of 2100 is UNIVERSAL type can't be wired to 115V/230V mains voltages by changing the jumper wires on the the MAINS PCB.

## 2. MAINS P.C.B. drawing:



## 3. Jumper wires connected chart:

Jumper wires shall be connected for the mains voltage

Mains Voltage	Jumper wire
115V	All 115V Jumper Wire
230V	230V Jumper Wire

## 4. CAUTION: REPLACE WITH SAME TYPE FUSE.

ATTENTION: UTILISER UN FUSIBLE DE RECHANGE MEME TYPE.

MAINS	100V-120V	220V-240V
F200	T10A 250V(32S125010KTU)	T5A 250V(32S12505K0TS)
F201/F202	T8A 250V(32S12508K0TU)	T8A 250V(32S12508K0TS)

T: TIME LAG FUSE.

# PARTS LIST

AMC 2100 SERVICE PARTS LIST SYMBOL NO.	PARTS NO.	DESCRIPTION	SPECIFICATION	Q'TY
		<b>PACKING ASS'Y</b>		
	21-4128	OWNER'S MANUAL	A2100	1
	26-0016	POLY BAG	235x368x0.07mm	1
	26-0018	POLY BAG	100x260x0.07mm	1
	26-4162	POLY BAG	525x610x0.07mm	1
	CT-5276	CARTON, INNER		1
	CT-5277	CARTON, OUTER		0.5
	34-1065-1	POLYLONE, F	CVT3030/A2445/M7	1
	34-1065-2	POLYLONE ,R	CVT3030/A2445/M7	1
	34-2002	EPE PROTECTOR	435x45x120mm	1
		<b>CHASSIS ASS'Y</b>		
	11-8091	PANEL, FRONT	A2100	1
	11-8328-2	PANEL, REAR	230C/50Hz	1
	11-6149*B	FRONT CHASSIS	2N100-2/-3	1
	11-6212	MAIN CHASSIS	2N100-2	1
	11-6151	CENTER BRACKET, R		1
	12-2168-1	BANANA SOCKET	RED TEXTURE	2
	12-2168-2	BANANA SOCKET	BLK TEXTURE	2
	12-3152GN	BUTTON, POWER SW	GREEN	1
	13-4131	PLATE PVC FOR PWR SW		1
	13-8227B	BUSHION, PW KNOB		1
	13-8229BK	SPACER SUPPORT	SCB-10	1
	14-5028	POWER CORD	WG C/EC 220-240V	1
	14-5029-1	POWER CORD	BS1360 FUSE=13A B VER.	1
	14-5003	CORD BUSH	4N-4	1
	15-2079	MECHANIC SCREW	M10*100L	1
	15-2080	NUT	M10	1
	15-2081	WASHER	10*28	1
	17-50DR103Z	CAP., CERAMIC	10nF/500V +80%-20%	2
	21-2441	LABEL, "CE" MARK	EC	1
	28-1046-1B	FOOT	H=17 M/M	2
	28-1046-2B	FOOT	H=17 M/M	2
	28-2078-BK	CAP, BINDING POST	BLK SILICON	2
	28-2078-RD	CAP, BINDING POST	RED SILICON	2
	29-2177	POWER TRANSFORMER	A3100/a/JSD9200	1
	30-1115	LED	CSL300GIDT L>20mm	1
	32S12508K0TS	FUSE, T8A/250V	T-LAG SMEKO	2
	32S12505K0TS	FUSE, T5A/250V	T-LAG SMEKO	1
	50-1038-1	CABINET, BLACK	CVT3030	1
	AA4.5B16I2.0SL	WASHER 4.5x16x2T	WASHER 4.5x16x2T	6
	AC04B15I0.8	FIBER WASHER	RED 4*15*0.8T	6
		<b>POWER SUPPLY MODULE</b>		
	90-1311-2	<b>POWER SUPPLY MODULE</b>	A2100	
	19-1311	PCB	FR4, SINGLE SIDE	1
D201 D202	11-5104	HEAT SINK	N-510 L=25mm W=15mm	2
R201	16-1:4MA912F	RES., METAL FILM	9K1 1/4W +-1%	1
C200	17-40CR472M	CAP., CERAMIC, AC	4700pF 400V +-20%	1
C201-C204	17-6.3EG828M	CAP., ELECTROLYTIC	8200uF/63V -10+50%	4
D205	30-1N4002	DIODE	1N4002 100V 1A	1
D201	30-F16C20C	DIODE, BRIDGE	F16C20C MOSPEC	1
D202	30-F16C20A	DIODE, BRIDGE	F16C20A MOSPEC	1
S201	31-1240	SWITCH, POWER	TV-8 5A/250V	1
F200 F201 F202	32S2016	FUSE HOLDER	5x20mm	6
		<b>INPUT AND BRIDGING MODULE</b>		
	90-1329	<b>INPUT AND BRIDGING MODULE</b>	A2100	1
	19-1329	PCB	164x64x1.6mm, P. PHENOLIC	1
R404 R408	16-1:6MA100F	RES., METAL FILM	10 1/6W +-1%	2
R401	16-1:6MA102F	RES., METAL FILM	1K 1/6W +-1%	1
R409 R410	16-1:6MA103F	RES., METAL FILM	10K 1/6W +-1%	2
R406	16-1:6MA112F	RES., METAL FILM	1K1 1/6W +-1%	1
R413 R414	16-1:6MA221F	RES., METAL FILM	220 1/6W +-1%	2
R403 R405 R407	16-1:6MA222F	RES., METAL FILM	2K2 1/6W +-1%	3
R402	16-1:6MA223F	RES., METAL FILM	22K 1/6W +-1%	1
R411 R412	16-1:6MA470F	RES., METAL FILM	47 1/6W +-1%	2
C401	17-1.6ER106M	CAP., ELECTROLYTIC	10uF/16V +-20%	1
C408 C409	17-1.6ER107M	CAP., ELECTROLYTIC	100uF/16V +-20%	2
C421 C423 C425	17-1.6ER226M	CAP., ELECTROLYTIC	22uF/16V +-20%	3
C404 C405 C427 C728	17-1.6ER476M	CAP., ELECTROLYTIC	47uF/16V +-20%	4
C422 C424 C426	17-5DR151J	CAP., CERAMIC	150pF/50V +-5%	3

# PARTS LIST

AMC 2100 SERVICE PARTS LIST				
SYMBOL NO.	PARTS NO.	DESCRIPTION	SPECIFICATION	Q'TY
C402 C403	17-5DR681J	CAP., CERAMIC	680pF/50V +-5%	2
C412	17-5DR104Z	CAP., CERAMIC	100nF/50V +80%-20%	1
C406 C407	17-6.3GR104J	CAP., METALIZED POLYESTER	100nF/63V 5% (BOX)	2
C410 C411	17-6.3GR333J	CAP., METALIZED POLYESTER	33nF/63V 5% (BOX)	2
CN401 C402 C403	12-1087-2WT	CONNECTOR	2P WHITE	3
JK401 C402 C403	12-2238G	RCA JACK	2P, GOLD PLATED	3
VR401 VR402 VR403	29-4215	VR. INPUT	20KK	3
D401 D402	30-5DZ20V	DIODE, ZENER	20V 5W	2
U402	30-LM7812A	IC., REGULATOR	LM/AN/JRC/7812FA 1A	1
U403	30-LM7912A	IC., REGULATOR	LM/AN/JRC/7912FA 1A	1
U401	30-NJM2068D	IC., OPAMP	IC., OPAMP	1
SW401	31-22B09	SLIDE SWITCH		1
	90-1704	AMPLIFIER MODULE	A2100	2
	19-1704	PCB	100x55x1.6mm	1
R618	16-1:4CA223J	RES., CARBON FILM	22K 1/4W +-5%	1
R617 R619	16-1:4CA6R8J	RES., CARBON FILM	6R8 1/4W 5%	2
R615 R620	16-1:6CA101J	RES., CARBON FILM	100 1/6W +-5%	2
R603 R604 R608 R609 R625	16-1:6CA152J	RES., CARBON FILM	1K5 1/6W +-5%	5
R623	16-1:6CA153J	RES., CARBON FILM	15K 1/6W +-5%	1
R616	16-1:6CA1R0J	RES., CARBON FILM	1R 1/6W +-5%	1
R610	16-1:6CA222J	RES., CARBON FILM	2K2 1/6W +-5%	1
R601	16-1:6CA223J	RES., CARBON FILM	22K 1/6W +-5%	1
R605	16-1:6CA271J	RES., CARBON FILM	270 1/6W +-5%	1
R611 R614	16-1:6CA330J	RES., CARBON FILM	33 1/6W +-5%	2
R602	16-1:6CA471J	RES., CARBON FILM	470 1/6W +-5%	1
R607 R613	16-1:6CA821J	RES., CARBON FILM	820 1/6W +-5%	2
Rx	16-1:6CA330J	RES., CARBON FILM	33 1/6W +-5%	1
R612	16-1:6MA8660F	RES., METAL FILM	866 1/6W 1%	1
R606	16-1AN103J	RES., METAL OXIDE	10K 1W +-5%	1
R621	16-1AN3R9J	RES., METAL OXIDE	3R9 1W +-5%	1
R622	16-2AN100J	RES., METAL OXIDE	10R 2W +-5%	1
R624	16-3AN152J	RES., METAL OXIDE	1K5 3W +-5%	1
C601	17-1.6ER226M	CAP, ELECTROLYTIC	22uF/16V +-20%	1
C603	17-1ER227M	CAP, ELECTROLYTIC	220uF/10V +-20%	1
C613	17-2.5EF337M	CAP, ELECTROLYTIC	330uF/25V +-20%	1
C604	17-5ER105M	CAP, ELECTROLYTIC	1uF/50V +-20%	1
C608	17-5DR220J	CAP., CERAMIC	22pF/50V +-5%	1
C614	17-5DR104Z	CAP., CERAMIC	100nF/50V +80%-20%	1
C602	17-5DR471J	CAP., CERAMIC	470pF/50V +-5%	1
C605	17-5DR100J	CAP., CERAMIC	10pF/50V +-5%	1
C607 C609 C610 C611 C612	17-6.3GR104J	CAP., METALIZED POLYESTER	100nF/63V 5% (BOX)	5
ZD601	30-1:2Z18V	DIODE, ZENER	18V 0.5W HZ18-2	1
D601-608 D610	30-1N4148	DIODE, SWITCHING	1N4148	9
D609	30-1N4002	DIODE	1N4002 100V 1A	1
Q604 Q605	30-2SA970GR	TR., PNP	2SA970GR/BL	2
Q603	30-2SC1815GR	TR., NPN	2SC1815GR	1
Q602 Q613	30-2SC2240GR	TR., NPN	2SC2240GR/BL	2
Q606	30-2SA1380D	TR., PNP	2SA1380D/E	1
Q610	30-2SB649A	TR., PNP	2SB649A	1
Q601	30-2SC3066F	TR., NPN, DIFF.	2SC3066G/H/F	1
Q608	30-2SC3502E	TR., NPN	2SC3502E	1
Q607 Q609	30-2SD669A	TR., NPN	2SD669A	2
Q118	30-2SA1386	TR., PNP	2SA1386	1
Q115	30-2SC3519	TR., NPN	2SC3519	1
RV601	29-R6V221B	VR., SEMI-FIX	221B RH0615C221 00	1
L601	29-3072	COIL	1.5uH P=12.5mm	1
	29-8004	SWITCH, THERMAL	2N100	1
FOR Q606 Q608	11-5069	HEAT SINK	19.05x13.208x9.525	2
FOR Q607/609/610	11-5104	HEAT SINK	L=25mm W=15mm	1
	11-2156	BRACKET, THERMAL	2N100-2/-3/5	1
	11-2158	PCB, BRACKET	JH-4L-T	2
	11-5105-1	HEAT SINK	170x100mm BLK	1
CN601	12-1087-2WT	CONNECTOR	2P WHITE	1
	13-T03P	MICA	L=23mm W=18mm	2
RL601	35-3045*A	RELAY	RW-SH-124D 24V	1

## **NOTES:**

**Proprietary information for servicing purposes only. The information given herein may not be used commercially without the prior written agreement of WELTRONICS CORP. L.A.**

**WELTRONICS CORP.**

**1414 Fair Oaks Rd., Suite #7**

**South Pasadena, CA91030**

**Tel: 1-616-799-6396**

**Fax: 1-626-7996541**