

AMC

SERVICE MANUAL

AV81HTc-DD

AUDIO VIDEO CONTROL CENTER

CONTENTS

DESCRIPTION

SPECIFICATIONS.....	3
REAR PANEL CONNECTIONS/FRONT PANEL CONTROLS.....	4
MAINS WIRING INSTRUCTION.....	5
SCHEMATIC DIAGRAM.....	6-18
PCB LAYOUT (PARTS SIDE).....	19-27
SERVICE PARTS LIST.....	28-28

SPECIFICATIONS

AUDIO INPUTS (CD/TUNER/TAPE1/TAPE2/ VCR1/VCR2/ LD/ VIDEO)&OUTPUTS

Input Impedence.....	R=47K ohm, C=100pF
THD 20Hz-20KHz and SMPTE IMD.....	<0.01% at 3Vrms
Inputs Sensitivity for 1V output.....	150mV
Input Overload.....	3.5Vrms
Signal to Noise Ratio (Gain=1).....	95dB "A" wtd ref. 1V
Frequency Response.....	20Hz-20KHz +/-0.5dB
Output Impedence.....	75 OHM
Maximum Output Level.....	12 Vrms
Subwoofer cross-over frequency.....	80Hz
Tone control 100Hz.....	9+/-0.5dB
10KHz.....	8.5+/-0.5dB

VIDEO INPUTS (VCR1, VCR2, LD & VIDEO) and OUTPUTS

Input Impedence.....	75 OHM
Input Level for peak White.....	1V peak
Output Impedence.....	75 OHM
Gain (From Video Inputs to Output).....	Unity with 75 OHM term
Frequency Response.....	DC-6MHz +/-1dB DC-18MHz +/-6dB
Max. Input Level.....	+/-2V peak

DOLBY DIGITAL MODE

Output Level @ 1KHz/0dBFS.....	Variable, max. 9V at clipping
THD+N @ 0dBFS/2V output	Main channels.....0.006% at 1KHz
	Surround channels.....0.006% at 1KHz
	Center channel.....0.006% at 1KHz
	LFE.....0.006% at 1KHz
Channel separation at 1KHz/2V output.....	>80dB
Signal to noise ratio @ -20dBFS.....	>70dB

OTHER

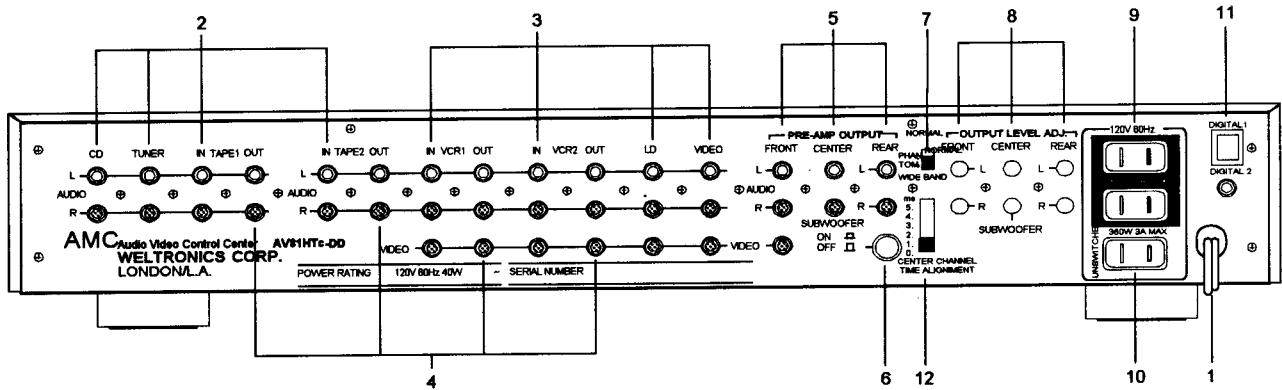
Dimensions (WxHxD).....	430x82x300 mm
Net Weight.....	5.0Kgs. (11 lbs.)
Power Consumption.....	30W

Manufactured under license from Dolby Laboratories. "Dolby", "Pro Logic" and the double-D symbol are trademarks of Dolby Laboratories. Confidential Unpublished Works. © 1992-1997 Dolby Laboratories, Inc. All rights reserved.

Weltronics Corp. reserved the right to improve its products at any time. Therefore, specifications are subject to change without notice.

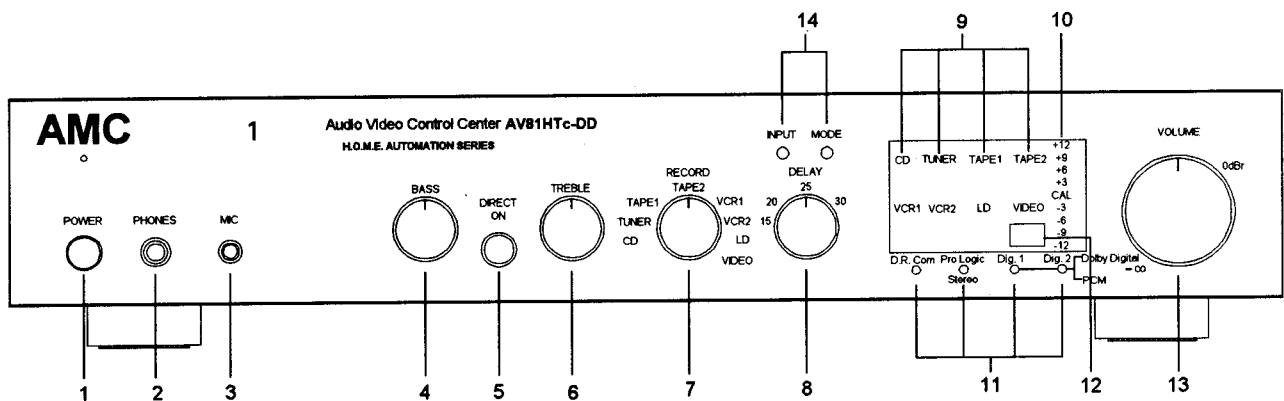
REAR PANEL CONNECTIONS/FRONT PANEL CONTROLS

REAR PANEL



1. AC LINE CORD
2. AUDIO INPUTS: CD, TUNER, TAPE1, TAPE2
3. AUDIO/VIDEO INPUTS: VCR1, VCR2, LD, VIDEO
4. AUDIO AND VIDEO RECORDING OUTPUTS: TAPE1, TAPE2, VCR1, VCR2
5. PRE-AMP OUTPUTS: FRONT L&R, CENTER, REAR L&R, SUBWOOFER, VIDEO
6. SUBWOOFER ON/ OFF SWITCH
7. NORMAL/PHANTOM/WIDE BAND SWITCH
8. OUTPUT LEVEL ADJ: FRONT L&R, CENTER, REAR L&R, SUBWOOFER
9. SWITCHED CONVENIENCE AC OUTLETS
10. UNSWITCHED CONVENIENCE AC OUTLET
11. DIGITAL INPUTS : DIGITAL 1, DIGITAL 2
12. CENTER CHANNEL TIME ALIGNMENT: 0, 1, 2, 3, 4, 5 ms

FRONT PANEL

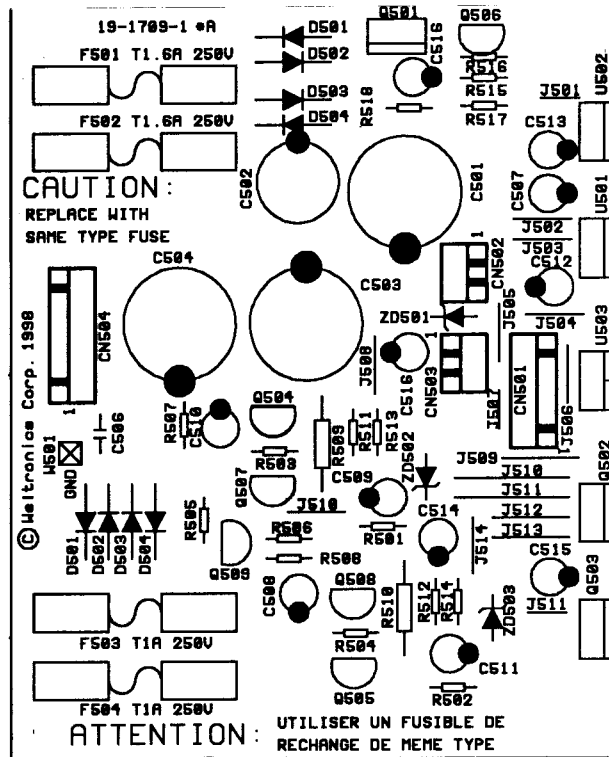
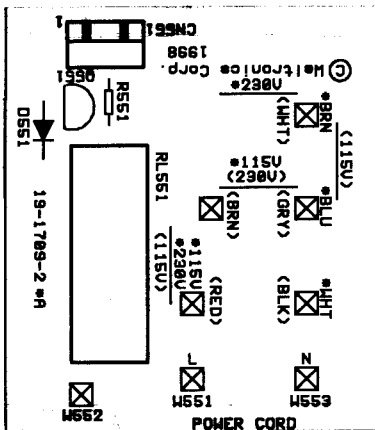


1. POWER SWITCH
2. HEADPHONE SOCKET
3. MICROPHONE INPUT
4. BASS CONTROL
5. DIRECT ON
6. TREBLE CONTROL
7. RECORD SELECTOR SWITCH
8. SURROUND CHANNEL DELAY SWITCH
9. INPUT INDICATOR LED'S
10. CALIBRATION METER LED'S
11. MODE INDICATORS
12. INFRARED RECEIVER
13. VOLUME CONTROL
14. INPUT & MODE SELECTORS

MAINS WIRING INSTRUCTION

1. The power transformer of AV81HTc-DD is UNIVERSAL type can be wired to 115V/230V mains voltages by changing the jumper wires on the the MAINS PCB.

2. MAINS P.C.B. drawing:



3. Jumper wires connected chart:

Jumper wires shall be connected for the mains voltage

Transformer	Mains Voltage	Jumper wire
29-2162	115V	All *115V
29-2162	230V	All *230V
29-2162-1	115V	All (115V)
29-2162-1	230V	All (230V)

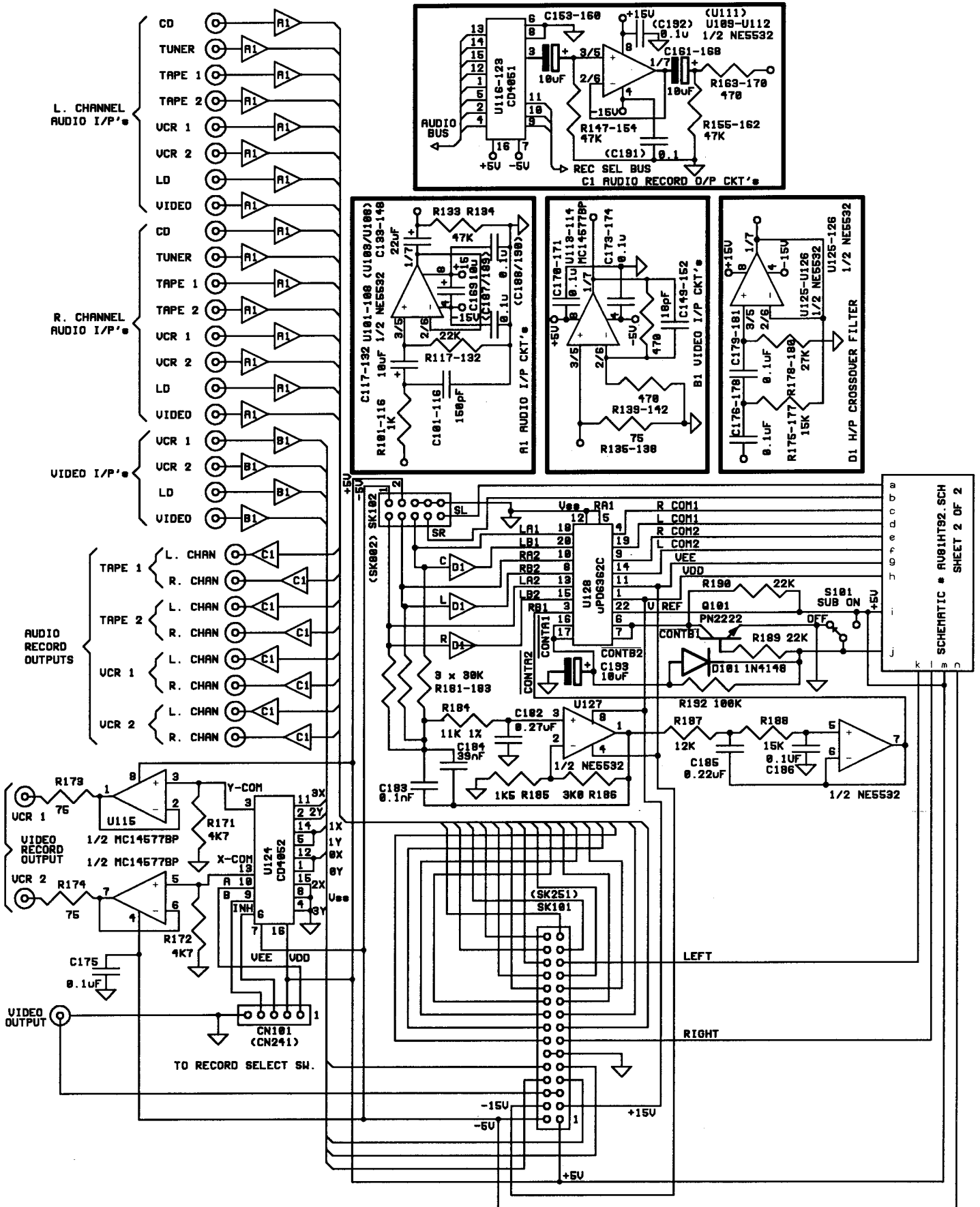
4. CAUTION: REPLACE WITH SAME TYPE FUSE.

ATTENTION: UTILISER UN FUSIBLE DE RECHANGE MEME TYPE.

MAINS	100V-120V	220V-240V
F501	T1.6A 250V(32S12501K6TU)	T1.6A 250V(32S12501K6TS)
F502	T1.6A 250V(32S12501K6TU)	T1.6A 250V(32S12501K6TS)
F503	T1A 250V(32S12501K0TU)	T1A 250V(32S12501K0TS)
F504	T1A 250V(32S12501K0TU)	T1A 250V(32S12501K0TS)

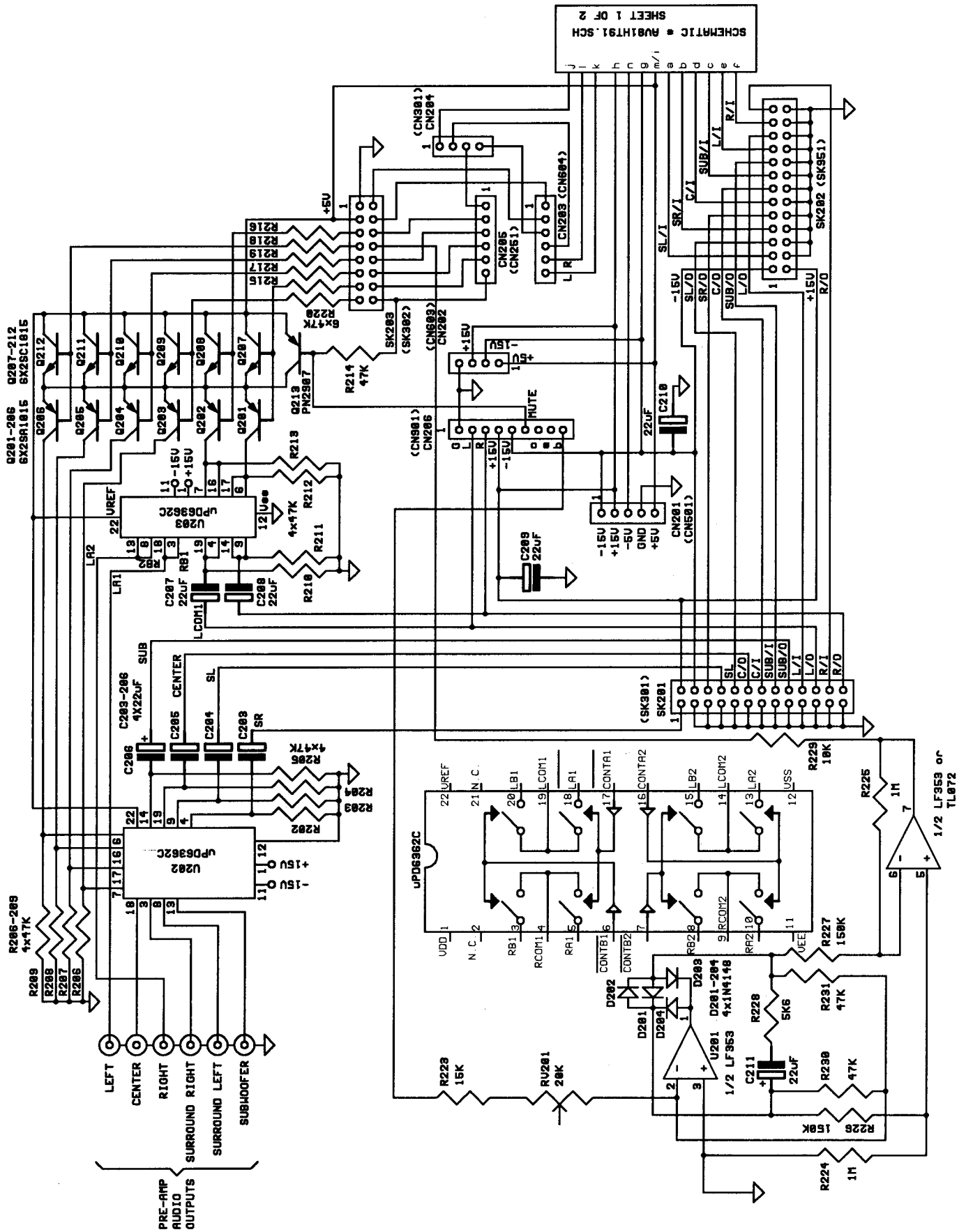
T: TIME LAG FUSE.

SCHEMATIC DIAGRAM (MAIN IN 1/2)

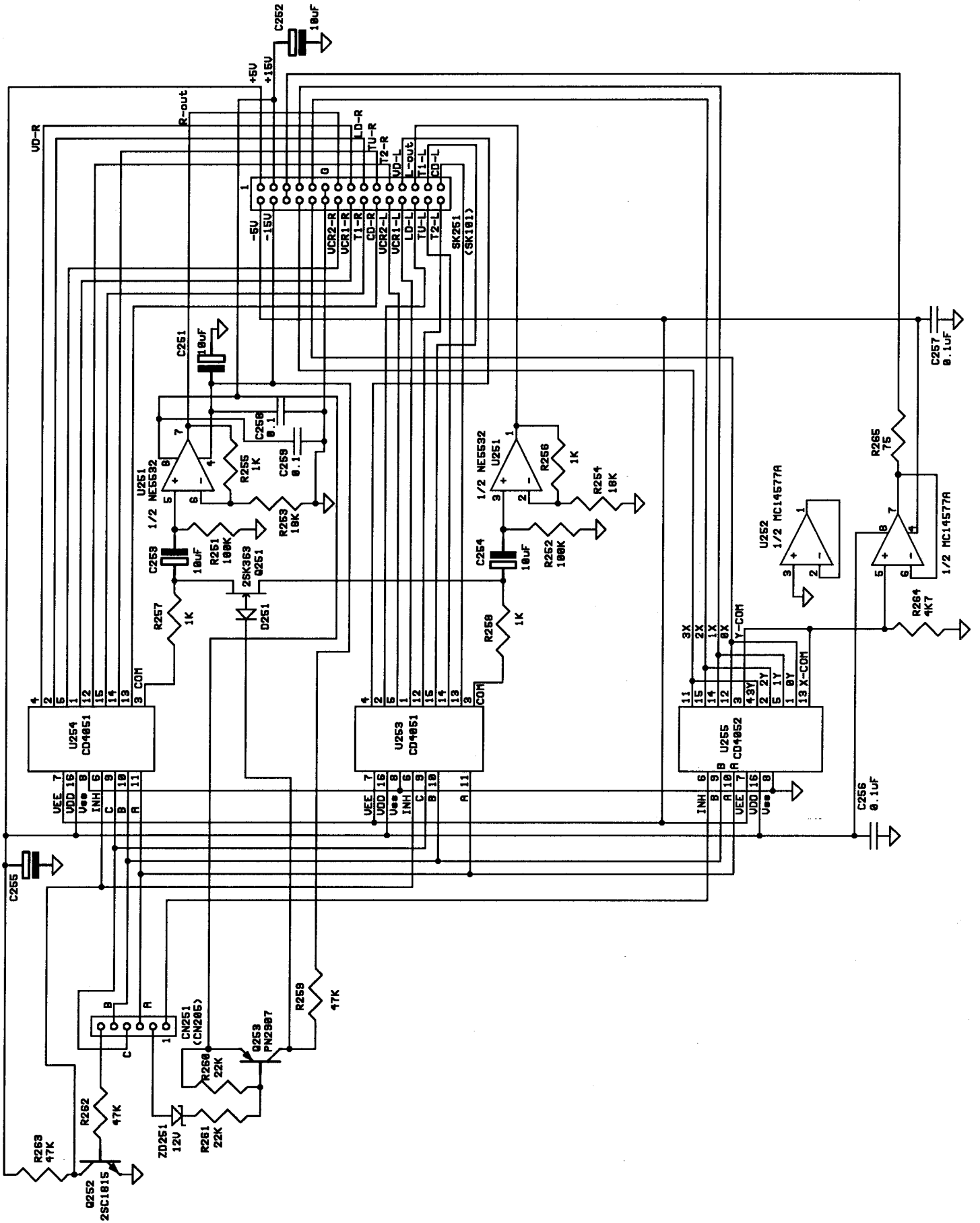


SCHEMATIC * AV81HT92.SCH
SHEET 2 OF 2

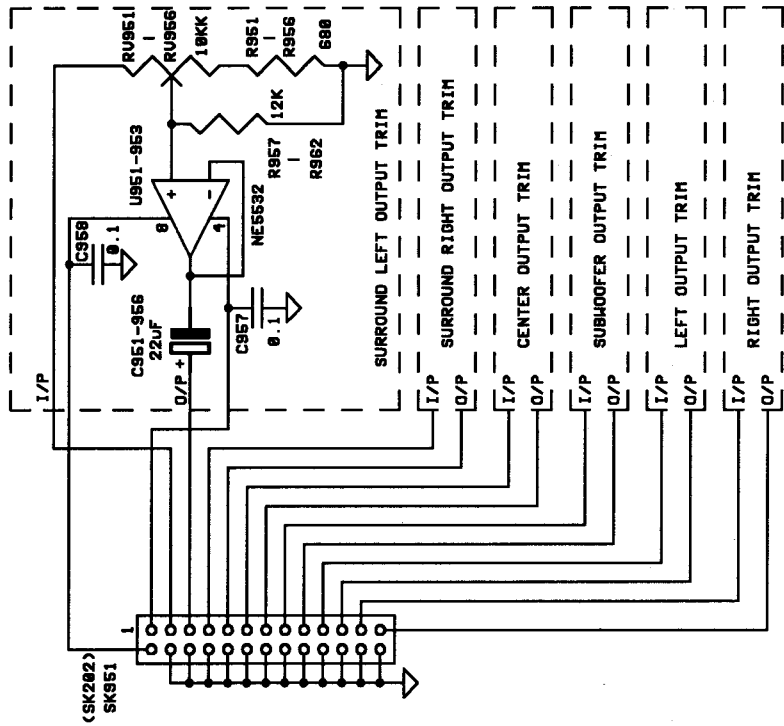
SCHEMATIC DIAGRAM (MAIN IN 1/2)



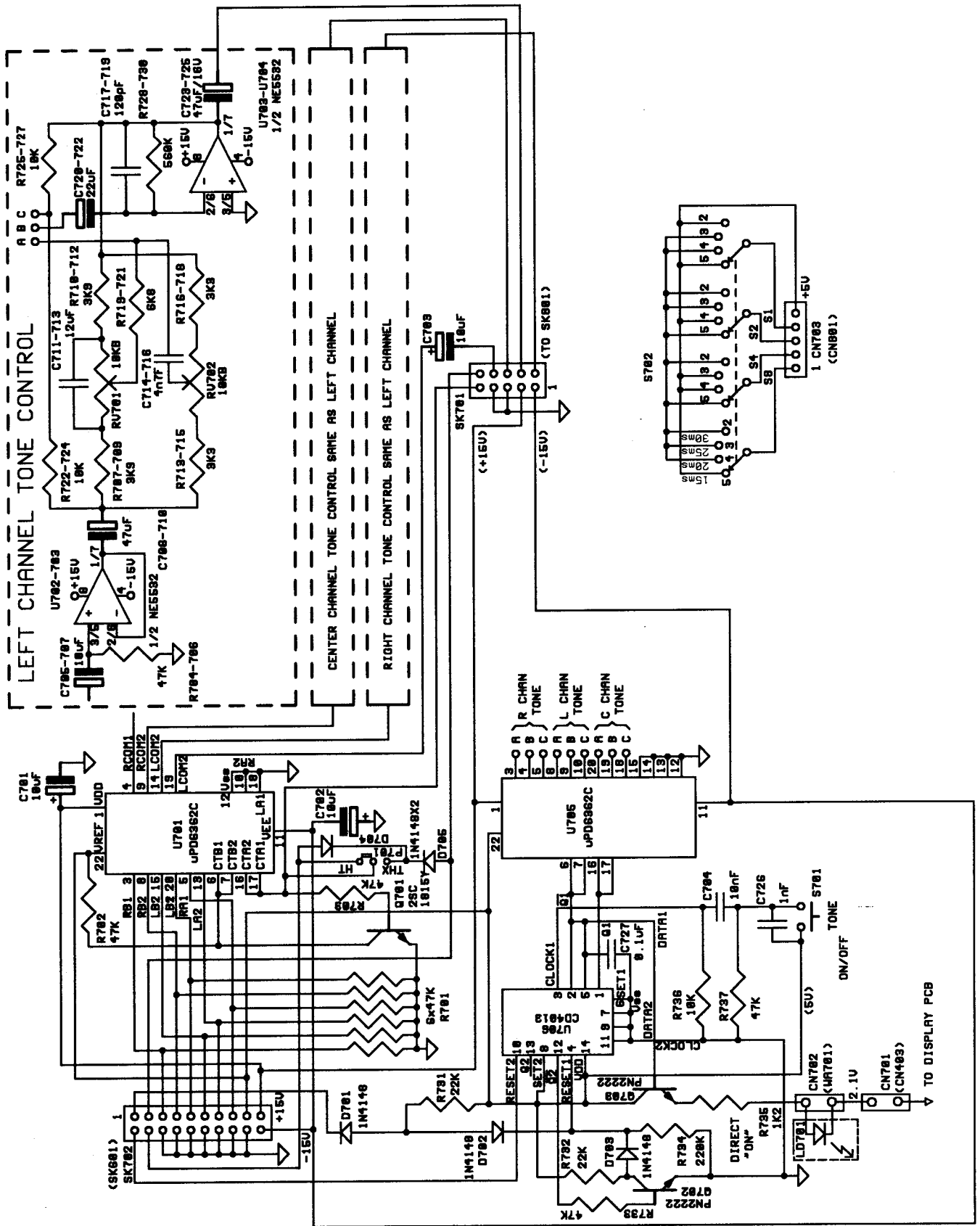
SCHEMATIC DIAGRAM (INPUT SELECTOR)



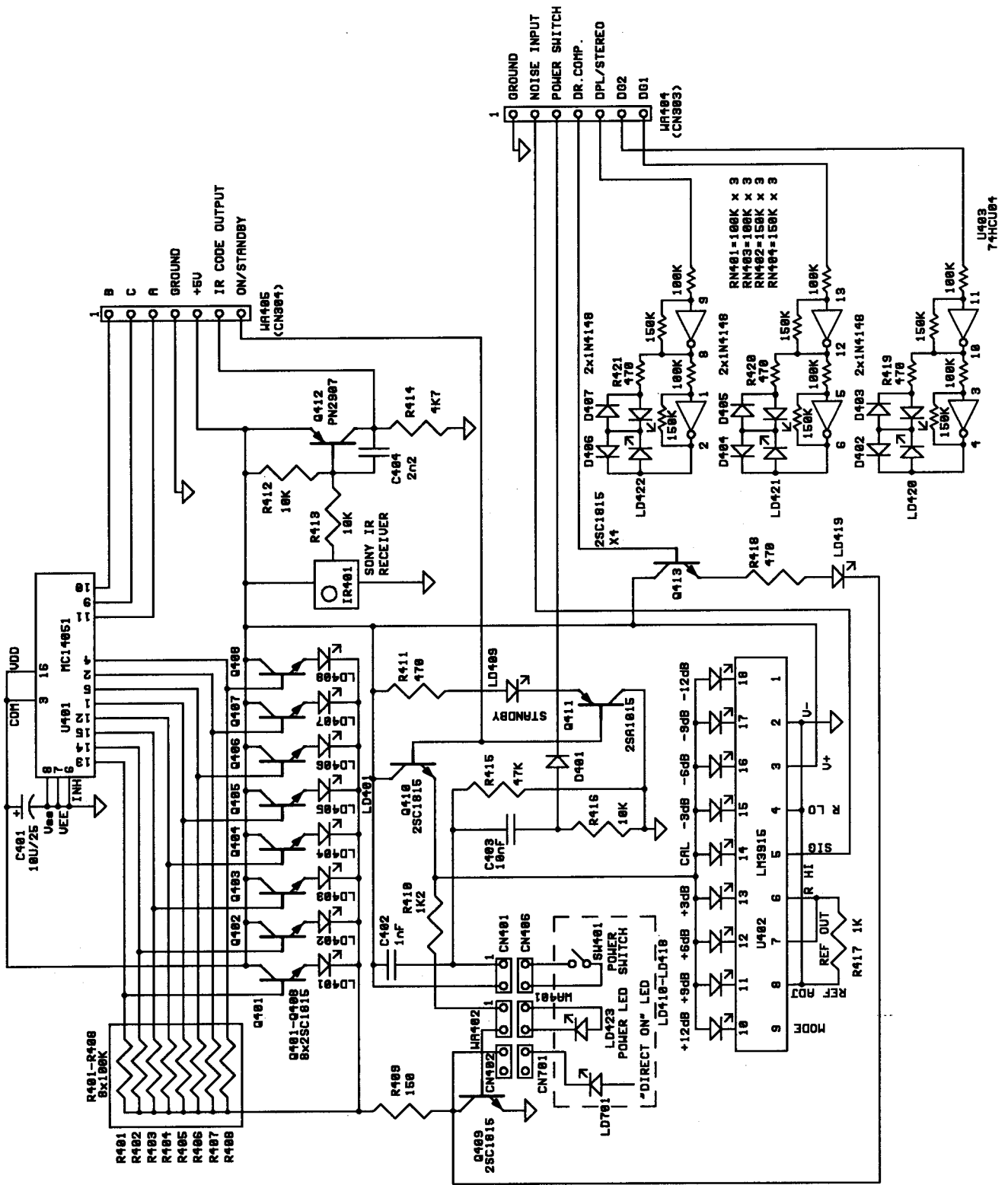
SCHEMATIC DIAGRAM (TRIM)



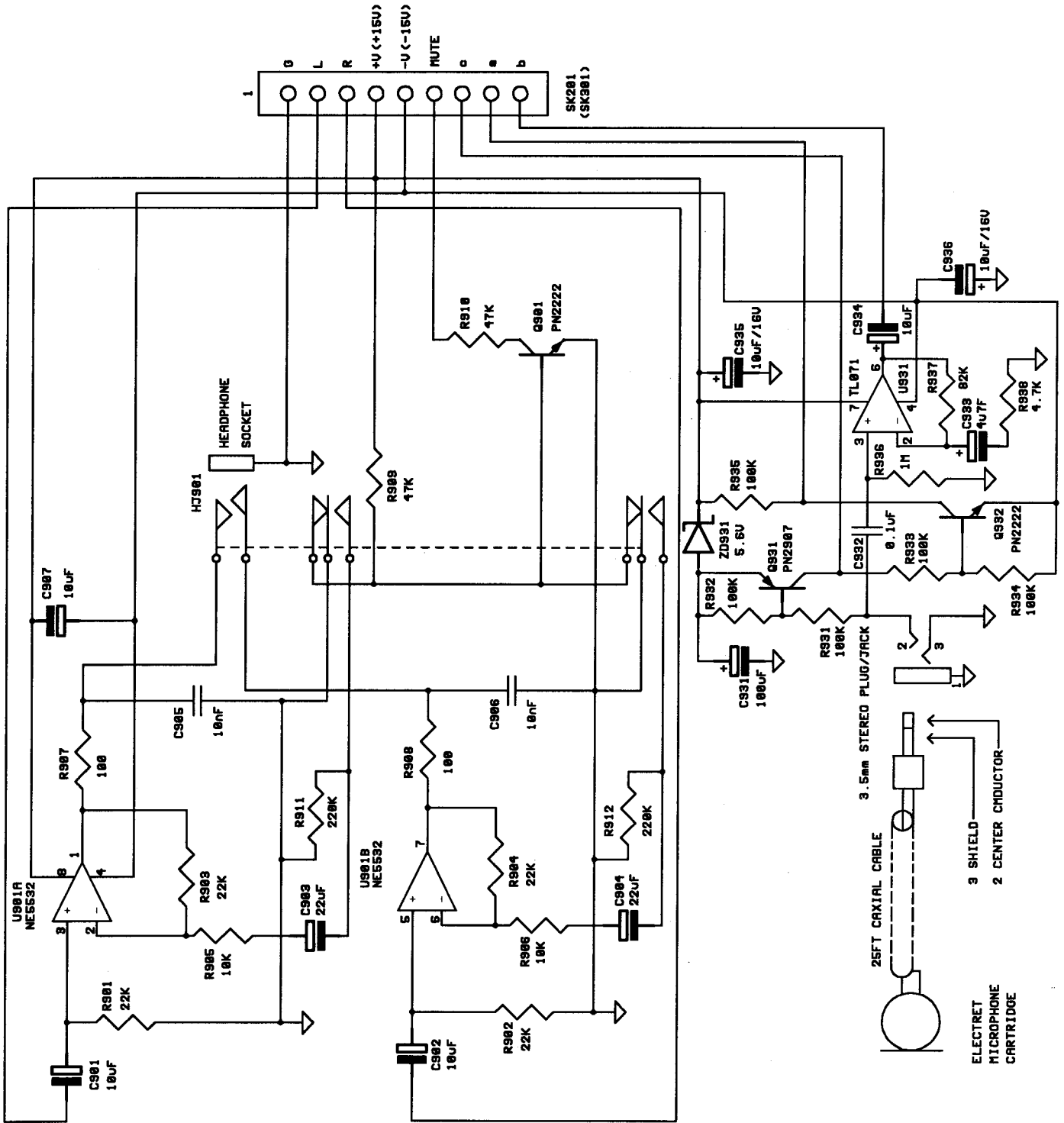
SCHEMATIC DIAGRAM (TONE CONTROL)



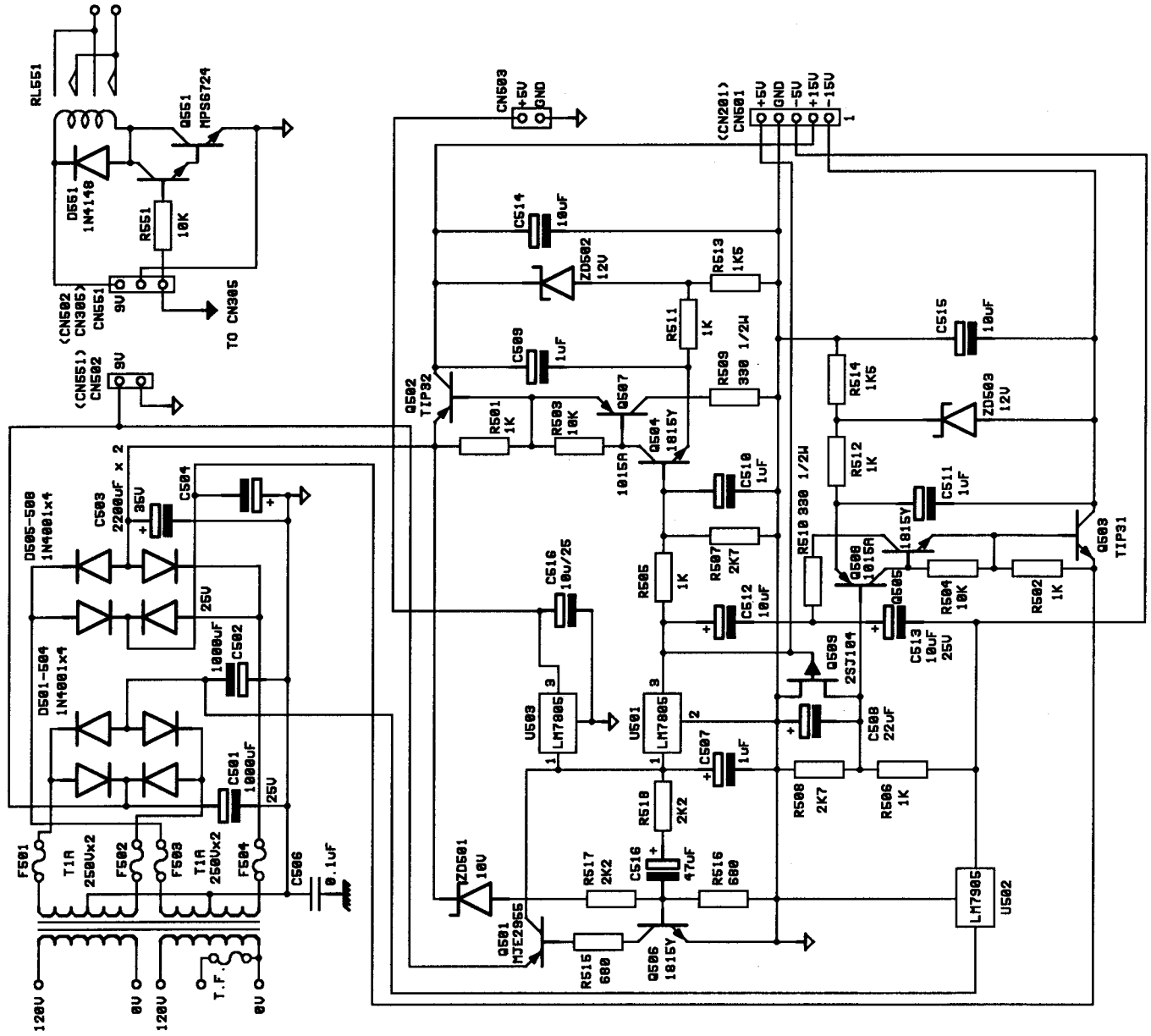
SCHEMATIC DIAGRAM (DISPLAY)



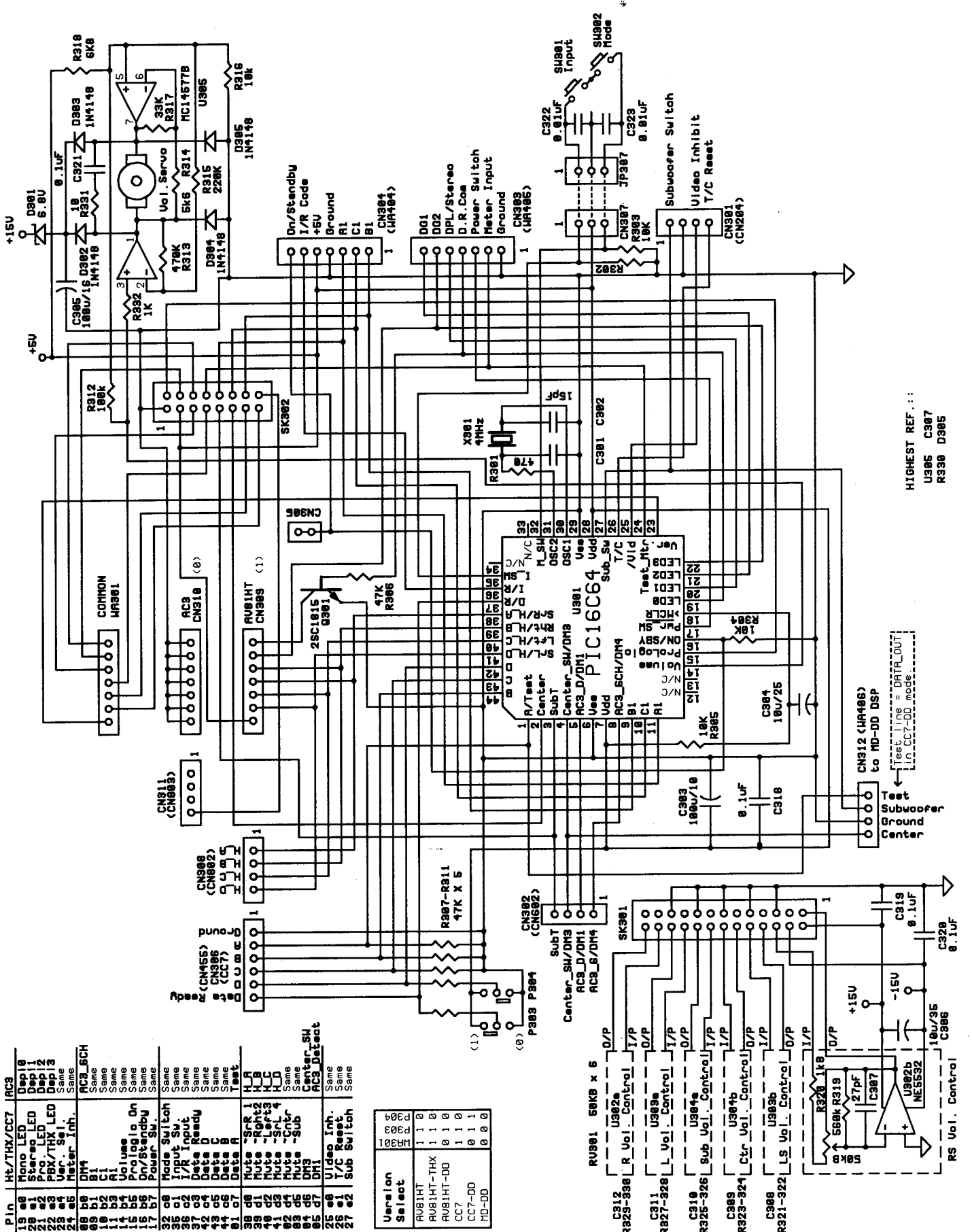
SCHEMATIC DIAGRAM (PHONES)



SCHEMATIC DIAGRAM (POWER SUPPLY)



SCHEMATIC DIAGRAM (LOGIC & VOLUME CONTROL)

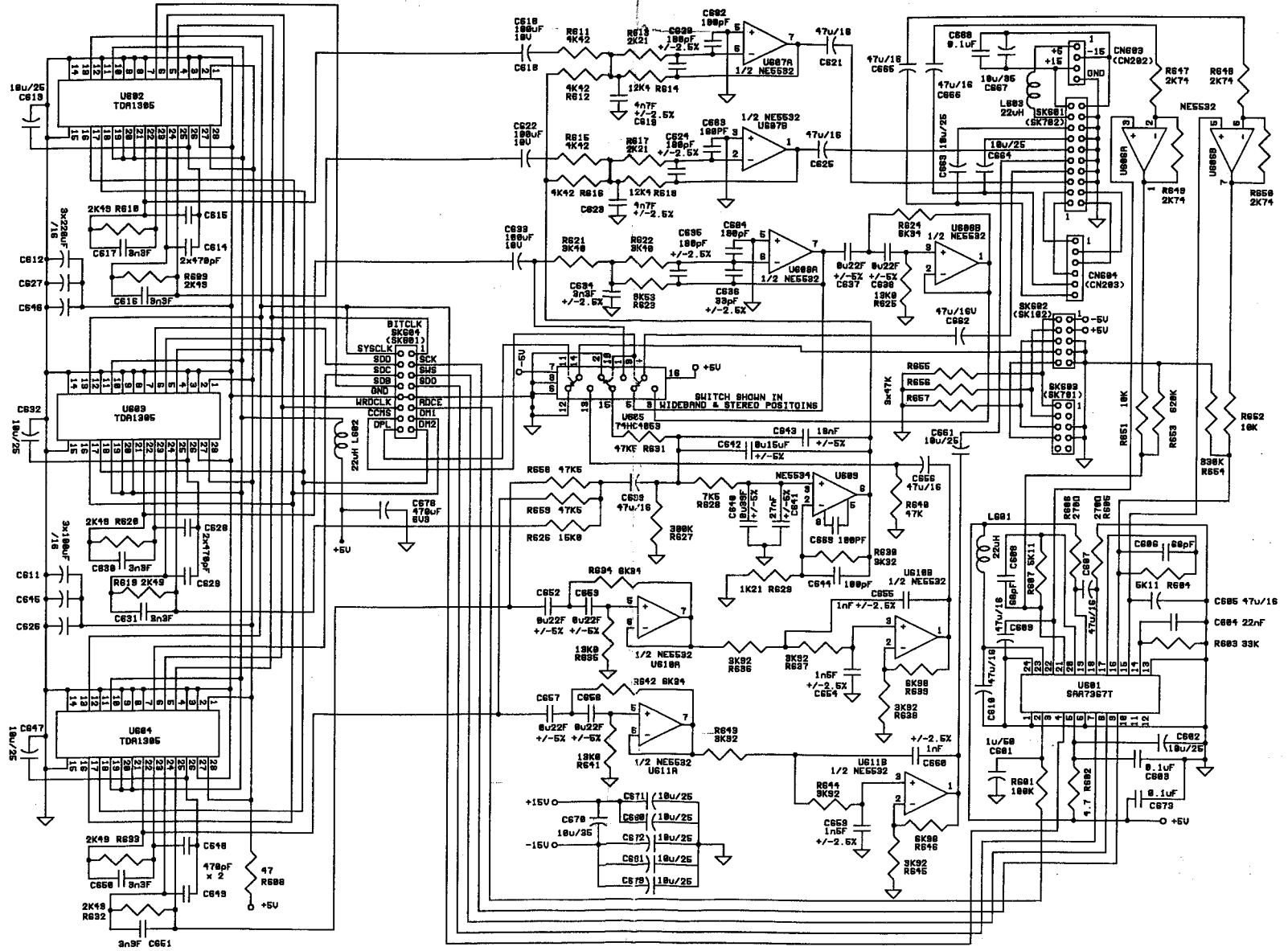


P.in	Pin	HT/THX/CC7	AC3
19	a0	Micro LED	Dep10
20	a1	Stance LED	Dep11
21	a2	Pro. LED	Dep12
22	a3	PBX/THX LED	Dep13
23	a4	Ver. Sel.	Same
24	a5	Meter Inh.	Same
25	b0	DM4	AC3_SCH
26	b1	C1	Same
27	b2	C1	Same
28	b3	A1	Same
29	b4	Volume	Same
30	b5	Prologia On	Same
31	b6	On/Standby	Same
32	b7	Power Sw.	Same
33	c0	Mode Switch	Same
34	c1	Input Sw	Same
35	c2	I/R Input	Same
36	c3	Data Ready	Same
37	c4	Data C	Same
38	c5	Data B	Same
39	c6	Data A	Test
40	d0	Mute -R	HB
41	d1	Mute -Rbht2	HC
42	d2	Mute -Leht3	HD
43	d3	Mute -Srl4	Same
44	d4	Mute -Cntr	Same
45	d5	Mute -Sub	Center_SH
46	d6	DM3	AC3_Dataet
47	d7	DM1	Same
48	e0	Video Inh.	Same
49	e1	T/C Reset	Same
50	e2	Sub Switch	Same

Version Select	0000	0001	0010	0011	0100	0101	0110	0111	1000	1001	1010	1011
RV81HT	1	1	0	0	0	0	0	0	0	0	0	0
RV81HT-THX	1	1	0	0	0	0	0	0	0	0	0	0
RV81HT-DD	0	1	0	0	0	0	0	0	0	0	0	0
CC7	0	1	0	0	0	0	0	0	0	0	0	0
CC7-DD	0	1	1	0	0	0	0	0	0	0	0	0
MD-DD	0	0	0	0	0	0	0	0	0	0	0	0

HIGHEST REF. :
 U985 C307
 R308 D305

SCHEMATIC DIAGRAM (DIGITAL TO ANALOG)

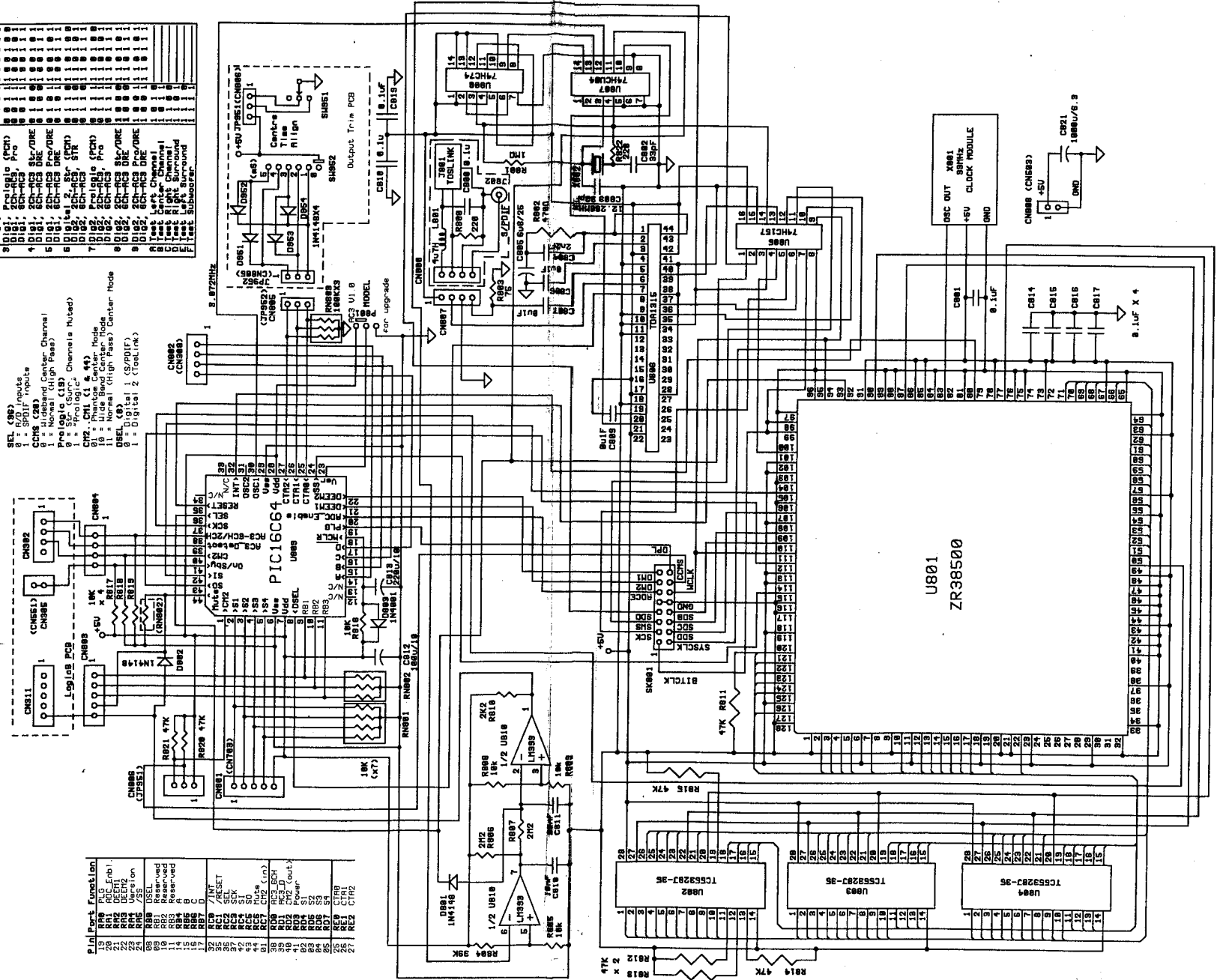


SCHEMATIC DIAGRAM (DIGITAL AC3)

Pin No.	Function	MODES	CH882
1	Power	0	0
2	Power	0	0
3	Power	0	0
4	Power	0	0
5	Power	0	0
6	Power	0	0
7	Power	0	0
8	Power	0	0
9	Power	0	0
10	Power	0	0
11	Power	0	0
12	Power	0	0
13	Power	0	0
14	Power	0	0
15	Power	0	0
16	Power	0	0
17	Power	0	0
18	Power	0	0
19	Power	0	0
20	Power	0	0
21	Power	0	0
22	Power	0	0
23	Power	0	0
24	Power	0	0
25	Power	0	0
26	Power	0	0
27	Power	0	0
28	Power	0	0
29	Power	0	0
30	Power	0	0
31	Power	0	0
32	Power	0	0
33	Power	0	0
34	Power	0	0
35	Power	0	0
36	Power	0	0
37	Power	0	0
38	Power	0	0
39	Power	0	0
40	Power	0	0
41	Power	0	0
42	Power	0	0
43	Power	0	0
44	Power	0	0
45	Power	0	0
46	Power	0	0
47	Power	0	0
48	Power	0	0
49	Power	0	0
50	Power	0	0
51	Power	0	0
52	Power	0	0
53	Power	0	0
54	Power	0	0
55	Power	0	0
56	Power	0	0
57	Power	0	0
58	Power	0	0
59	Power	0	0
60	Power	0	0
61	Power	0	0
62	Power	0	0
63	Power	0	0
64	Power	0	0
65	Power	0	0
66	Power	0	0
67	Power	0	0
68	Power	0	0
69	Power	0	0
70	Power	0	0
71	Power	0	0
72	Power	0	0
73	Power	0	0
74	Power	0	0
75	Power	0	0
76	Power	0	0
77	Power	0	0
78	Power	0	0
79	Power	0	0
80	Power	0	0
81	Power	0	0
82	Power	0	0
83	Power	0	0
84	Power	0	0
85	Power	0	0
86	Power	0	0
87	Power	0	0
88	Power	0	0
89	Power	0	0
90	Power	0	0
91	Power	0	0
92	Power	0	0
93	Power	0	0
94	Power	0	0
95	Power	0	0
96	Power	0	0
97	Power	0	0
98	Power	0	0
99	Power	0	0
100	Power	0	0

- SEL (88)
- CH88 (28)
- Prelogic (18)
- CH2 (11)
- CH882 (88)

Pin	Function
28	Power
29	Power
30	Power
31	Power
32	Power
33	Power
34	Power
35	Power
36	Power
37	Power
38	Power
39	Power
40	Power
41	Power
42	Power
43	Power
44	Power
45	Power
46	Power
47	Power
48	Power
49	Power
50	Power
51	Power
52	Power
53	Power
54	Power
55	Power
56	Power
57	Power
58	Power
59	Power
60	Power
61	Power
62	Power
63	Power
64	Power
65	Power
66	Power
67	Power
68	Power
69	Power
70	Power
71	Power
72	Power
73	Power
74	Power
75	Power
76	Power
77	Power
78	Power
79	Power
80	Power
81	Power
82	Power
83	Power
84	Power
85	Power
86	Power
87	Power
88	Power
89	Power
90	Power
91	Power
92	Power
93	Power
94	Power
95	Power
96	Power
97	Power
98	Power
99	Power
100	Power



PARTS LIST

AMC AV81HTc-DD SERVICE PARTS LIST				
SYMBOL NO.	PARTS NO.	DESCRIPTION	SPECIFICATION	Q'TY
		PACKING ASS'Y		
	21-4122	O'WNERS MANUAL	AV81HTc-DD	1
	CT-5264	CARTON INNER	AMC AV	1
	CT-5265	CARTON OUTER	AMC AV	0.25
	RC-0023*A	REMOTE CONTROL UNIT	RC-001	1
	37-C1.5V4	BATTERY	"AAA" 1.5V (NO:4)	2
	11-3064	RCA PLUG	SHORT TYPE	8
	29-9001	MIC PHONE	§ 3.5 PLUG W/C48	1
		CHASSIS ASS'Y		
	11-1143	TOP COVER		1
	11-2144	BRACKET FOR X'MER		2
	11-2360	BRACKET		1
	11-6125-2*B	FRAME RIGHT		1
	11-6125-3	RIGHT PANEL		1
	11-6132	BOTTOM CHASSIS		1
	11-6140-2*A	FRONT CHASSIS		1
	11-7039	SHAFT CONNECTING		1
	11-8075	FRONT PANEL		1
	11-8417-4	DISPLAY WINDOW		1
	11-8510-1	REAR PANEL 120V	120V AV81HT-DD	1
	11-8510-2	REAR PANEL 230V	230V AV81HT-DD	1
	11-9065	E-RINCT		2
	12-1068	CONNECTOR,SHAFT		1
	12-2110	AC OUTLET/AH	A1/AH 110-120V	3
	12-2122	AC OUTLET/ EC	EC/C 220-240V	1
	12-3110	PUSH KNOB BLACK		1
	12-3125	GUIDE SHAFT	§ 18x § 6 T3.4	1
	12-3151	KNOB CONTROL		4
	12-3152BK	POWER BUTTON		1
	12-3152GN	POWER SW BUTTON	GREEN	1
	12-3167	KNOB,VOLUME		1
	12-64218	PIN HEADERS	DM-2GMC 2P	4
	13-8227B	PW KNOB BUSHION		2
	13-8229BK	SPACER SUPPORT	SCB-10mm BLK	12
	13-8233BK	SPACER SUPPORT	SCB-9mm BLK	18
	13-8247BK	SPACER SUPPORT	SCB-6mm BLK	2
	13-8249	SPACER SUPPORT	SCB-24mm BLK	4
	13-9003	PVC WASHER	§ 6.4x § 11x0.5t	1
	14-1148	CONNECTOR ASS'Y	13Px2 L=60	1
	14-1168	CONNECTOR ASS'Y	13Px2 L=35	1
	14-1170	CONNECTOR ASS'Y	8Px2 L=150	1
	14-1173	WIRE ASS'Y	9P L=370mm	1
	14-1175	WIRE ASS'Y	5P YEL L=160mm	1
	14-1180	WIRE ASS'Y	4P BLUE L=60mm	1
	14-1183	WIRE ASS'Y	4P YEL L=140mm	1
	14-1184	WIRE ASS'Y	6P BLUE L=140mm	1
	14-3292	WIRE ASS'Y	FC-10P+CORE L=5	1
	14-3293	WIRE ASS'Y	FC-10P+CORE L=1	1
	14-3294	WIRE ASS'Y	FC-20P+CORE L=1	1
	14-3295	WIRE ASS'Y	2P L=310mm+CORE	1
	14-3296-1	WIRE ASS'Y	4P L=90mm+CORE	1
	14-3297-1	WIRE ASS'Y	5P L=110mm+CORE	1
	14-3298	WIRE ASS'Y	5P L=160mm+CORE	1

PARTS LIST

AMC AV81HTc-DD SERVICE PARTS LIST				
SYMBOL NO.	PARTS NO.	DESCRIPTION	SPECIFICATION	Q'TY
	14-3299	WIRE ASS'Y	6P L=90mm+CORE	1
	14-3303	WIRE ASS'Y	4P L=350mm	1
	14-3304	WIRE ASS'Y	5P-->4P YEL	1
	14-3305	WIRE ASS'Y	4P+3P+CORE	1
	14-5003	CORD BUSH	4N-4	1
	14-5006	BANDER	80mm	10
	14-5027	POWER CORD/AH	GP AH/A1 110-120V	1
	14-5028	POWER CORD/EC	WG C/EC 220-240V	1
	26-0016	POLY BAG	235x368x0.07mm	1
	26-0018	POLY BAG	100x260x0.07mm	1
	26-0023	POLY BAG	80x100mm	1
	26-0712	POLY BAG	380x550x0.07M/M	1
	28-1046-1B	FOOT	H=17 M/M	2
	28-1046-2B	FOOT	H=17 M/M	2
	28-1049-1	CUSHION CONTROL KNOB		4
	28-1049-3	CUSHION VOLUME	B 35.9*14.4	1
	28-2074	SPONGE FOR FOOT		4
	28-2082	RETAINER I/P SEL BOAR		1
	28-3007	SPONGE	35x15x6Tmm	2
	28-3008	SPONGE	35x15x13Tmm	1
	29-2162-1	POWER X'FORMER		1
	32S12501K0TS	FUSE SMEKO	T1A/250V SMEKO	2
	32S12501K0TU	FUSE UL	T1A/250V UL/CSA	2
	32S12501K6TS	FUSE SMEKO	T1.6A/250V SMEKO	2
	32S12501K6TU	FUSE UL	T1.6A/250V UL/CSA	2
	90-1239*B	MAIN IN PCB MODULE		
	19-1239*B	PCB MAIN IN PUT	L:03 *B 343X120X1.6T	1
R101-R116	16-1.6CA102J	RES CF	1K 1/6W +/-5%	16
R117-132	16-1.6CA223J	RES CF	22K 1/6W +/-5%	16
R133.R134	16-1S473J	RES SIP	47Kx8 9P +/-5%	2
R135-138	16-1.6CA750J	RES CF	75 1/6W +/-5%	4
R139-146	16-1.6CA471J	RES CF	470 1/6W +/-5%	8
R147-162	16-1.6CA473J	RES CF	47K 1/6W +/-5%	16
R163-170	16-1.6CA471J	RES CF	470 1/6W +/-5%	8
R171.172	16-1.6CA472J	RES CF	4K7 1/6W +/-5%	2
R173.174	16-1.6CA750J	RES CF	75 1/6W +/-5%	2
R175-177	16-1.6CA153J	RES CF	15K 1/6W +/-5%	3
R178-180	16-1.6CA273J	RES CF	27K 1/6W +/-5%	3
R181-183	16-1.6CA303J	RES CF	30K 1/6W +/-5%	3
R184	16-1.6MA113F	RES MF	11K 1/6W +/-1%	1
R185	16-1.6CA152J	RES CF	1K5 1/6W +/-5%	1
R186	16-1.6CA302J	RES CF	3K 1/6W +/-5%	1
R187	16-1.6CA123J	RES CF	12K 1/6W +/-5%	1
R188	16-1.6CA153J	RES CF	15K 1/6W +/-5%	1
R189.190	16-1.6CA223J	RES CF	22K 1/6W +/-5%	2
R192	16-1.6CA104J	RES CF	100K 1/6W +/-5%	1
R202-220	16-1.6CA473J	RES CF	47K 1/6W +/-5%	19
R223	16-1.6CA153J	RES CF	15K 1/6W +/-5%	1
R224.225	16-1.6CA105J	RES CF	1M 1/6W +/-5%	2
R226.227	16-1.6CA154J	RES CF	150K 1/6W +/-5%	2
R228	16-1.6CA562J	RES CF	5K6 1/6W +/-5%	1
R229	16-1.6CA103J	RES CF	10K 1/6W +/-5%	1
R230.231	16-1.6CA473J	RES CF	47K 1/6W +/-5%	2

PARTS LIST

AMC AV81HTc-DD SERVICE PARTS LIST				
SYMBOL NO.	PARTS NO.	DESCRIPTION	SPECIFICATION	Q'TY
C101-116	17-5DR151J	CAP.CC	150pf/50V +/-5%	16
C117-132	17-1.6ER106M	CAP.EL	10uf/16V +/-20%	16
C133-148	17-1.6ER226M	CAP.EL	22uf/16V +/-20%	16
C149-152	17-5DR180J	CAP.CC	18pf/50V +/-5%	4
C153-168	17-1.6ER106M	CAP.EL	10uf/16V +/-20%	16
C169	17-1.6ER106M	CAP.EL	10uf/16V +/-20%	1
C170-175	17-5DR104Z	CAP.CC	100nF/50V +80/-20%	6
C176-181	17-6.3GR104J	CAP.MP. (BOX)	100nF/63V +/-5%	6
C182	17-6.3GR274J	CAP.MP. (BOX)	270nF/63V +/-5%	1
C183	17-6.3GR104J	CAP.MP. (BOX)	100nF/63V +/-5%	1
C184	17-5FR393J	CAP.PP (MINI)	39nF/50V +/-5%	1
C185	17-6.3GR224J	CAP.MP. (BOX)	220nF/63V +/-5%	1
C186	17-6.3GR104J	CAP.MP. (BOX)	100nF/63V +/-5%	1
C187-192	17-5DR104Z	CAP.CC	100nF/50V +80/-20%	6
C193	17-1.6ER106M	CAP.EL	10uf/16V +/-20%	1
C203-210.211	17-1.6ER226M	CAP.EL	22uf/16V +/-20%	9
D101.201-204	30-1N4148	DIODE SWITCH	1N4148	5
Q101	30-PN2222	TRANSISTOR	PN2222A	1
Q201-206	30-2SA1015GR	TRANSISTOR	2SA1015GR	6
Q207-212	30-2SC1815GR	TRANSISTOR	2SC1815GR	6
Q213	30-PN2907	TRANSISTOR	PN2907A	1
CN101	12-1087-5YL	CONNECTORS	5P YELLOW	1
CN102	12-1087-3WT	CONNECTORS	3P WHITE	1
CN201	12-1087-5WT	CONNECTORS	5P WHITE	1
CN202	12-1087-4WT	CONNECTORS	4P WHITE	1
CN203	12-1087-6WT	CONNECTORS	6P WHITE	1
CN204	12-1087-4BU	CONNECTORS	4P BLUE	1
CN205	12-1087-6BU	CONNECTORS	6P BLUE	1
CN206	12-1087-9WT	CONNECTORS	9P WHITE	1
CN207	12-1087-2WT	CONNECTORS	2P WHITE	1
SK101	12-1101-30	PIN WAFER	30P(15Px2) ROW	1
SK102	12-1102-10	PIN HEADERS	10P(5Px2) ROW	1
SK201.202	12-1102-26	PIN HEADERS	26P(13Px2) ROW	2
SK203	12-1102-16	PIN HEADERS	16P(8Px2) ROW	1
RJ101-106	13-3054	RCA JACK 2P 3L	2P 3L (WHT/RED)	6
RJ107-113	13-3053	RCA JACK 3P	3P (WHT/RED/YEL)	7
RJ114	12-2164	RCA JACK 2P 3L	2P 3L (BLK/BLK)	1
RJ115	13-3054	RCA JACK 2P 3L	2P 3L (WHT/RED)	1
W101	14-1196	WIRE W/LUG	L=60mm BLK	1
W201	14-1189	FLAT WIRE	4P L=80mm	1
W202	14-1191	FLAT WIRE	6P L=210mm	1
W203	14-1190	FLAT WIRE	6P L=205mm	1
RV201	29-R6V223B	SEMI-FIX VR	22KB RH0615C22	1
U101-112	30-NJM2068D	IC	NJM2068D	12
U113-115	30-MC14577BP	IC	MC14577BP	3
U116-123	30-TC4051BP	IC	TC4051BP	8
U124	30-TC4052BP	IC	TC4052BP	1
U125-127	30-NJM2068D	IC	NJM2068D	3
U128	30-UPD6362C	IC	uPD6362C	1
U201	30-TL072	IC	TL072N/LF353	1
U202.203	30-UPD6362C	IC	uPD6362C	2
S201	31-1252	SW PUSH		1
	90-1245*B	TONE CONTROL MODULE		

PARTS LIST

AMC AV81HTc-DD SERVICE PARTS LIST				
SYMBOL NO.	PARTS NO.	DESCRIPTION	SPECIFICATION	Q'TY
	19-1245*B	AV81HTc PCB	L-03*B	1
R701	16-3.4S473J	RES SIP	47Kx6 3/4W +/-5%	1
R702-706	16-1.6CA473J	RES CF	47K 1/6W +/-5%	5
R707-712	16-1.6CA392J	RES CF	3K9 1/6W +/-5%	6
R713-718	16-1.6CA332J	RES CF	3K3 1/6W +/-5%	6
R719-721	16-1.6CA682J	RES CF	6K8 1/6W +/-5%	3
R722-727	16-1.6CA103J	RES CF	10K 1/6W +/-5%	6
R728-730	16-1.6CA564J	RES CF	560K 1/6W +/-5%	3
R731.R732	16-1.6CA223J	RES CF	22K 1/6W +/-5%	2
R733.737	16-1.6CA473J	RES CF	47K 1/6W +/-5%	2
R734	16-1.6CA224J	RES CF	220K 1/6W +/-5%	1
R735	16-1.6CA122J	RES CF	1K2 1/6W +/-5%	1
R736	16-1.6CA103J	RES CF	10K 1/6W +/-5%	1
C701-703	17-1.6ER106M	CAP.EL	10uf/16V +/-20%	3
C704	17-5DR103M	CAP.CC	0.01uf/50V +/-20%	1
C705-707	17-1.6ER106M	CAP.EL	10uf/16V +/-20%	3
C708-710	17-1.6ER476M	CAP.EL	47uf/16V +/-20%	3
C711-713	17-5FR124J	CAP.PP	0.12uF/50V +/-5%	3
C714-716	17-5FR472J	CAP.PP	0.0047uF/50V +/-5%	3
C717-719	17-5DR121J	CAP.CC	120pf/50V +/-5%	3
C720-722	17-1.6ER226M	CAP.EL	22uf/16V +/-20%	3
C723-725	17-1.6ER476M	CAP.EL	47uf/16V +/-20%	3
C726	17-5DR103M	CAP.CC	0.01uf/50V +/-20%	1
C727	17-5DR104Z	CAP.CC	100nF/50V +80/-20%	1
D701-705	30-1N4148	DIODE SWITCH	1N4148	5
Q701	30-2SC1815GR	TRANSISTOR	2SC1815GR	1
Q702.Q703	30-PN2222	TRANSISTOR	PN2222A	2
CN701	12-1087-2YL	CONNECTORS	2P YELLOW	1
CN702	12-1087-2WT	CONNECTORS	2P WHITE	1
CN703	12-1087-5BU	CONNECTORS	5P BLUE	1
SK701	12-1102-10	PIN HEADERS	10P(5Px2) ROW	1
SK702	12-1102-20	PIN HEADERS	20P(10Px2) ROW	1
W701	14-1189	FLAT WIRE	4P L=80mm	1
RV701.RV702	29-4189	VR BASS/TREBLE	10KBx3	2
U701	30-UPD6362C	IC	uPD6362C	1
U702-704	30-NJM2068D	IC	NJM2068D	3
U705	30-UPD6362C	IC	uPD6362C	1
U706	30-TC4013BP	IC	TC4013BP	1
SW301.302	31-1366	TACT SW	SKHHAN2910-EK 9.5mm	2
SW701	31-1250	SW PUSH	NON-LOCK (1P)	1
SW702	31-1249	FUNCTION SW	SRRZS44N11-EK	1
JP307	14-3277	WIRE ASS'Y	3P 2468 200mm WHIT	1
	90-1705	DIGITAL TO ANALOG MODUL		
	19-1705*A	PCB	142x81x1.6T FR4	1
R601	16-1.6MA104F	RES MF	100K 1/6W +/-1%	1
R602	16-1.6MA4R7F	RES MF	4R7 1/6W +/-1%	1
R603	16-1.6MA333F	RES MF	33K 1/6W +/-1%	1
R604	16-1.6MA511F	RES MF	5K11 1/6W +/-1%	1
R605.606	16-1.6MA271F	RES MF	270 1/6W +/-1%	2
R607	16-1.6MA511F	RES MF	5K11 1/6W +/-1%	1
R608	16-1.6MA470F	RES MF	47 1/6W +/-1%	1
R609.610	16-1.6MA2491F	RES MF	2K49 1/6W +/-1%	2
R611.612	16-1.6MA4421F	RES MF	4K42 1/6W +/-1%	2

PARTS LIST

AMC AV81HTc-DD SERVICE PARTS LIST				
SYMBOL NO.	PARTS NO.	DESCRIPTION	SPECIFICATION	Q'TY
R613	16-1.6MA2211F	RES MF	2K21 1/6W +/-1%	1
R614	16-1.6MA1242F	RES MF	12K4 1/6W +/-1%	1
R615.616	16-1.6MA4421F	RES MF	4K42 1/6W +/-1%	2
R617	16-1.6MA2211F	RES MF	2K21 1/6W +/-1%	1
R618	16-1.6MA1242F	RES MF	12K4 1/6W +/-1%	1
R619	16-1.6MA2491F	RES MF	2K49 1/6W +/-1%	1
R620	16-1.6MA2491F	RES MF	2K49 1/6W +/-1%	1
R621.622	16-1.6MA342F	RES MF	3K4 1/6W +/-1%	2
R623	16-1.6MA9531F	RES MF	9K53 1/6W +/-1%	1
R624	16-1.6MA6341F	RES MF	6K34 1/6W +/-1%	1
R625	16-1.6MA133F	RES MF	13K 1/6W +/-1%	1
R626	16-1.6MA153F	RES MF	15K 1/6W +/-1%	1
R627	16-1.6MA304F	RES MF	300K 1/6W +/-1%	1
R628	16-1.6MA752F	RES MF	7K5 1/6W +/-1%	1
R629	16-1.6MA1211F	RES MF	1K21 1/6W +/-1%	1
R630	16-1.6MA3321F	RES MF	3K32 1/6W +/-1%	1
R631	16-1.6MA4752F	RES MF	47K5 1/6W +/-1%	1
R632.633	16-1.6MA2491F	RES MF	2K49 1/6W +/-1%	2
R634	16-1.6MA6341F	RES MF	6K34 1/6W +/-1%	1
R635	16-1.6MA133F	RES MF	13K 1/6W +/-1%	1
R636-638	16-1.6MA3921F	RES MF	3K92 1/6W +/-1%	3
R639	16-1.6MA6981F	RES MF	6K98 1/6W +/-1%	1
R640	16-1.6MA473F	RES MF	47K 1/6W +/-1%	1
R641	16-1.6MA133F	RES MF	13K 1/6W +/-1%	1
R642	16-1.6MA6341F	RES MF	6K34 1/6W +/-1%	1
R643-645	16-1.6MA3921F	RES MF	3K92 1/6W +/-1%	3
R646	16-1.6MA6981F	RES MF	6K98 1/6W +/-1%	1
R647.648	16-1.6MA2741F	RES MF	2K74 1/6W +/-1%	2
R649.650	16-1.6MA2741F	RES MF	2K74 1/6W +/-1%	2
R651.652	16-1.6MA103F	RES MF	10K 1/6W +/-1%	2
R653	16-1.6MA624F	RES MF	620K 1/6W +/-1%	1
R654	16-1.6MA334F	RES MF	330K 1/6W +/-1%	1
R655.656.657	16-1.6MA473F	RES MF	47K 1/6W +/-1%	3
R658.659	16-1.6MA4752F	RES MF	47K5 1/6W +/-1%	2
C601	17-5ER105M	CAP.EL	1uf/50V +/-20%	1
C602	17-1.6ER106M	CAP.EL	10uf/16V +/-20%	1
C603	17-5DR104Z	CAP.CC	100nF/50V +80/-20%	1
C604	17-6.3GR223J	CAP.MP. (BOX)	22nF/63V +/-5%	1
C605	17-1.6ER476M	CAP.EL	47uf/16V +/-20%	1
C606	17-5DR680J	CAP.CC	68pf/50V +/-5%	1
C607	17-1.6ER476M	CAP.EL	47uf/16V +/-20%	1
C608	17-5DR680J	CAP.CC	68pf/50V +/-5%	1
C609	17-1.6ER476M	CAP.EL	47uf/16V +/-20%	1
C610	17-1.6ER476M	CAP.EL	47uf/16V +/-20%	1
C611	17-1.6ER107M	CAP.EL	100uf/16V +/-20%	1
C612	17-1.6ER227M	CAP.EL	220uf/16V +/-20%	1
C613	17-1.6ER106M	CAP.EL	10uf/16V +/-20%	1
C614.615	17-5DR471J	CAP.CC	470pf/50V +/-5%	2
C616.617	17-6.3GR332J	CAP.MP. (BOX)	3n3F/63V +/-5%	2
C618	17-1.6ER107M	CAP.EL	100uf/16V +/-20%	1
C619	17-6.3GR472J	CAP.MP. (BOX)	4n7F/63V +/-5%	1
C620	17-5PR181J	CAP.PP	180pf/50V +/-5%	1
C621	17-1.6ER476M	CAP.EL	47uf/16V +/-20%	1
C622	17-1.6ER107M	CAP.EL	100uf/16V +/-20%	1

PARTS LIST

AMC AV81HTc-DD SERVICE PARTS LIST				
SYMBOL NO.	PARTS NO.	DESCRIPTION	SPECIFICATION	Q'TY
C623	17-6.3GR472J	CAP.MP. (BOX)	4n7F/63V +/-5%	1
C624	17-5PR181J	CAP.PP	180pf/50V +/-5%	1
C625	17-1.6ER476M	CAP.EL	47uf/16V +/-20%	1
C626	17-1.6ER107M	CAP.EL	100uf/16V +/-20%	1
C627	17-1.6ER227M	CAP.EL	220uf/16V +/-20%	1
C628	17-5DR471J	CAP.CC	470pf/50V +/-5%	1
C629	17-5DR471J	CAP.CC	470pf/50V +/-5%	1
C630	17-6.3GR332J	CAP.MP. (BOX)	3n3F/63V +/-5%	1
C631	17-6.3GR332J	CAP.MP. (BOX)	3n3F/63V +/-5%	1
C632	17-1.6ER106M	CAP.EL	10uf/16V +/-20%	1
C633	17-1.6ER107M	CAP.EL	100uf/16V +/-20%	1
C634	17-6.3GR332J	CAP.MP. (BOX)	3n3F/63V +/-5%	1
C635	17-5PR181J	CAP.PP	180pf/50V +/-5%	1
C636	17-5DR330J	CAP.CC	33pF/50V +/-5%	1
C637.638	17-6.3GR224J	CAP.MP. (BOX)	220nF/63V +/-5%	2
C639	17-1.6ER476M	CAP.EL	47uf/16V +/-20%	1
C640	17-6.3GR394J	CAP.MP. (BOX)	390nF/63V +/-5%	1
C641	17-6.3GR273J	CAP.MP. (BOX)	27nF/63V +/-5%	1
C642	17-6.3GR154J	CAP.MP. (BOX)	150nF/63V +/-5%	1
C643	17-6.3GR103J	CAP.MP. (BOX)	10nF/63V +/-5%	1
C644	17-5DR101J	CAP.CC	100pf/50V +/-5%	1
C645	17-1.6ER107M	CAP.EL	100uf/16V +/-20%	1
C646	17-1.6ER227M	CAP.EL	220uf/16V +/-20%	1
C647	17-1.6ER106M	CAP.EL	10uf/16V +/-20%	1
C648.649	17-5DR471J	CAP.CC	470pf/50V +/-5%	2
C650.651	17-6.3GR332J	CAP.MP. (BOX)	3n3F/63V +/-5%	2
C652.653	17-6.3GR224J	CAP.MP. (BOX)	220nF/63V +/-5%	2
C654	17-6.3GR152J	CAP.MP. (BOX)	1n5F/63V +/-5%	1
C655	17-6.3GR102J	CAP.MP. (BOX)	1nF/63V +/-5%	1
C656	17-1.6ER476M	CAP.EL	47uf/16V +/-20%	1
C657	17-6.3GR224J	CAP.MP. (BOX)	220nF/63V +/-5%	1
C658	17-6.3GR224J	CAP.MP. (BOX)	220nF/63V +/-5%	1
C659	17-6.3GR152J	CAP.MP. (BOX)	1n5F/63V +/-5%	1
C660	17-6.3GR102J	CAP.MP. (BOX)	1nF/63V +/-5%	1
C661	17-1.6ER106M	CAP.EL	10uf/16V +/-20%	1
C662	17-1.6ER476M	CAP.EL	47uf/16V +/-20%	1
C663.664	17-1.6ER106M	CAP.EL	10uf/16V +/-20%	2
C665	17-1.6ER476M	CAP.EL	47uf/16V +/-20%	1
C666	17-1.6ER476M	CAP.EL	47uf/16V +/-20%	1
C667	17-5ER106M	CAP.EL	10uf/50V +/-20%	1
C668	17-6.3GR104J	CAP.MP. (BOX)	100nF/63V +/-5%	1
C669	17-5DR101J	CAP.CC	100pf/50V +/-5%	1
C670	17-5ER106M	CAP.EL	10uf/50V +/-20%	1
C671.672	17-1.6ER106M	CAP.EL	10uf/16V +/-20%	2
C673	17-5DR104Z	CAP.CC	100nF/50V +80/-20%	1
C678	17-0.63EF477M	CAP. EL	470UF/6.3V +/-20%	1
C679-681	17-5ER106M	CAP.EL	10uf/50V +/-20%	3
C682-684	17-5DR181J	CAP.CC	180pf/50V +/-5%	3
CN603	12-1087-4WT	CONNECTORS	4P WHITE	1
CN604	12-1087-6WT	CONNECTORS	6P WHITE	1
SK601	12-1102-20	PIN HEADERS	20P(10Px2) ROW	1
SK602.603	12-1102-10	PIN HEADERS	10P(5Px2) ROW	2
SK604	12-1101-16	PIN WAFER	16P (8Px2)	1
L601.602.603	29-1222	COIL-CHOCK	22uH ALA307-220	3

PARTS LIST

AMC AV81HTc-DD SERVICE PARTS LIST				
SYMBOL NO.	PARTS NO.	DESCRIPTION	SPECIFICATION	Q'TY
U601	30-SAA7367T	IC	SAA7367T	1
U602.603.604	30-TDA1305T	IC	TDA1305T	3
U605	30-74HC4053*A	IC	74HC4053	1
U606.607.608	30-NE5532	IC	NE5532N	3
U609	30-NE5534	IC	NE5534N	1
U610.611	30-NE5532	IC	NE5532N	2
	90-1706	LOGIC/VOL CTL MODULE		
	19-1706*A	PCB	220x56x1.6T FR4	1
R301	16-1:6MA471F	RES MF	33K 1/6W +/-1%	1
R302.303.304	16-1:6MA103F	RES MF	10K 1/6W +/-1%	3
R305	16-1:6MA103F	RES MF	10K 1/6W +/-1%	1
R306-311	16-1:6MA473F	RES MF	47K 1/6W +/-1%	6
R312	16-1:6MA104F	RES MF	100K 1/6W +/-1%	1
R313	16-1:6MA474F	RES MF	470K 1/6W +/-1%	1
R314	16-1:6MA562F	RES MF	5K6 1/6W +/-1%	1
R315	16-1:6MA224F	RES MF	220K 1/6W +/-1%	1
R316	16-1:6MA103F	RES MF	10K 1/6W +/-1%	1
R317	16-1:6MA333F	RES MF	470 1/6W +/-1%	1
R318	16-1:6MA682F	RES.MF	6K8 1/6W +/-1%	1
R319.321.323	16-1:6MA564F	RES MF	560K 1/6W +/-1%	3
R320.322.324	16-1:6MA182F	RES MF	1K8 1/6W +/-1%	3
R325.327.329	16-1:6MA564F	RES MF	560K 1/6W +/-1%	3
R326.328.330	16-1:6MA182F	RES MF	1K8 1/6W +/-1%	3
R331	16-1:6MA100F	RES MF	10 1/6W +/-1%	1
R332	16-1:6MA102F	RES MF	1K 1/6W +/-1%	1
C301.302	17-5DR150J	CAP.CC	15pf/50V +/-5%	2
C303.305	17-1.6ER107M	CAP.EL	100uf/16V +/-20%	2
C304.306	17-2.5ER106M	CAP.EL	10uf/25V +/-20%	2
C307-312	17-5DR270J	CAP.CC	27pf/50V +/-5%	6
C318.321	17-6.3GR104J	CAP.MP. (BOX)	100nF/63V +/-5%	2
C319.320	17-5DR104Z	CAP.CC	100nF/50V +80/-20%	2
D301	30-1:2Z6V8	ZD	ZD 6V8 0.5W	1
D302-305	30-1N4148	DIODE SWITCH	1N4148	4
Q301	30-2SC1815GR	TRANSISTOR	2SC1815GR	1
CN301.302	12-1087-4WT	CONNECTORS	4P WHITE	2
CN303.304	12-1087-7WT	CONNECTORS	7P WHITE	2
CN305	12-1087-2WT	CONNECTORS	2P WHITE	1
CN306	12-1087-6WT	CONNECTORS	6P WHITE	1
CN307	12-1087-3WT	CONNECTORS	3P WHITE	1
CN308	12-1087-4WT	CONNECTORS	4P WHITE	1
CN309.310	12-1087-7WT	CONNECTORS	7P WHITE	2
CN311.312	12-1087-4WT	CONNECTORS	4P WHITE	2
SK301	12-1102-26	PIN HEADERS	26P(13Px2) ROW	1
SK302	12-1102-16	PIN HEADERS	16P(8Px2) ROW	1
P303.304	12-64213	PIN HEADERS	TD-3SG 3P	2
RV301	29-4192	VR VOLUME With MOTOR	50KBx6	1
X301	30-4001	QUARTZ CRYSTAL	4MHz	1
U301	30-16C64-HDD15	PIC IC	PIC16C64A-04/PQ	1
U302.303.304	30-NE5532	IC	NE5532N	3
U305	30-MC14577BP	IC	MC14577BP	1
	90-1707	DIGITAL PCB MODULE		
	19-1707*A	PCB	126x81x1.6T FR4	1

PARTS LIST

AMC AV81HTc-DD SERVICE PARTS LIST				
SYMBOL NO.	PARTS NO.	DESCRIPTION	SPECIFICATION	Q'TY
R801	16-1.6MA105F	RES MF	1M 1/6W +/-1%	1
R802	16-1.6MA471F	RES MF	470 1/6W +/-1%	1
R803	16-1.6MA750F	RES MF	75 1/6W +/-1%	1
R804	16-1.6MA393F	RES MF	39K 1/6W +/-1%	1
R805	16-1.6MA103F	RES MF	10K 1/6W +/-1%	1
R806.807	16-1.6MA225F	RES MF	2M2 1/6W +/-1%	2
R808.809	16-1.6MA103F	RES MF	10K 1/6W +/-1%	2
R810	16-1.6MA222F	RES MF	2K2 1/6W +/-1%	1
R811-815	16-1.6MA473F	RES MF	47K 1/6W +/-1%	5
R816-819	16-1.6MA103F	RES MF	10K 1/6W +/-1%	4
R820.821	16-1.6MA473F	RES MF	47K 1/6W +/-1%	2
R822	16-1.6MA221F	RES MF	220 1/6W +/-1%	1
C801	17-5DR104Z	CAP.CC	100nF/50V +80/-20%	1
C802.803	17-5DR330J	CAP.CC	33pF/50V +/-5%	2
C804	17-6.3GR222J	CAP.MP. (BOX)	2n2F/63V +/-5%	1
C805	17-1.6ER685M	CAP.EL	6.8uf/16V +/-20%	1
C806-809	17-5DR104Z	CAP.CC	100nF/50V +80/-20%	4
C810	17-6.3GR103J	CAP.MP. (BOX)	10nF/63V +/-5%	1
C811	17-6.3GR223J	CAP.MP. (BOX)	22nF/63V +/-5%	1
C812	17-1.6ER107M	CAP.EL	100uf/16V +/-20%	1
C813	17-1.6ER227M	CAP.EL	220uf/16V +/-20%	1
C814-819	17-5DR104Z	CAP.CC	100nF/50V +80/-20%	6
C821	17-0.63EL108M	CAP EL	1000uF/6.3V +/-20%	1
D801.802	30-1N4148	DIODE SWITCH	1N4148	2
D803	30-1N4002	DIODE	1N4002 100V 1A	1
CN801	12-1087-5WT	CONNECTORS	5P WHITE	1
CN802	12-1087-4WT	CONNECTORS	4P WHITE	3
CN803	12-1087-5WT	CONNECTORS	5P WHITE	1
CN805.806	12-1087-3WT	CONNECTORS	3P WHITE	2
CN808	12-1087-2WT	CONNECTORS	2P WHITE	1
SK801	12-1108-16	PIN HEADERS	16P(8PX2) L=12mm	1
L801	29-1114	COIL CHOKE	4.7uH +/-10%	1
U801	30-ZR38500	IC	ZR38500-A3	1
U802.803.804	30-CY7C199-15P	IC	S-RAM,32Kx8,	3
U805	30-74HC157AP	IC	74HC157AP	1
U806	30-TDA1315H	IC	TDA1315H	1
U807	30-74HCU04	IC	74HCU04AP	1
U808	30-TC74HC74AP	IC	TC74HC74AP	1
U809	30-16C64-HDD14	PIC IC	PIC16C64A-04/PQ	1
U810	30-LM393N	IC	LM393N	1
X801	30-4026-1	OSC MODULE	33MHz	1
X802	30-4025	QUARTZ CRYSTAL	12.288MHz	1
RN801x4	16-1.6CA103J	RES CF	10K 1/6W +/-5%	4
RN802x4	16-1.6CA103J	RES CF	10K 1/6W +/-5%	4
RN803x3	16-1.6CA104J	RES CF	100K 1/6W +/-5%	3
P801	12-64213	PIN HEADERS	TD-3SG 3P	1
	90-1708	TRIM&INP SEL MODULE		
	19-1708*A	PCB	142x118x1.6T FR4	1
R251.252	16-1.6CA104J	RES CF	100K 1/6W +/-5%	2
R253.254	16-1.6CA183J	RES CF	18K 1/6W +/-5%	2
R255-258	16-1.6CA102J	RES CF	1K 1/6W +/-5%	4
R259	16-1.6CA473J	RES CF	47K 1/6W +/-5%	1
R260.R261	16-1.6CA223J	RES CF	22K 1/6W +/-5%	2

PARTS LIST

AMC AV81HTc-DD SERVICE PARTS LIST				
SYMBOL NO.	PARTS NO.	DESCRIPTION	SPECIFICATION	Q'TY
R262.263	16-1:6CA473J	RES CF	47K 1/6W +/-5%	2
R264	16-1:6CA472J	RES CF	4K7 1/6W +/-5%	1
R265	16-1:6CA750J	RES CF	75 1/6W +/-5%	1
R951-956	16-1:6CA681J	RES CF	680 1/6W +/-5%	6
R957-962	16-1:6CA123J	RES CF	12K 1/6W +/-5%	6
C251-255	17-1.6ER106M	CAP.EL	10uf/16V +/-20%	5
C256-259	17-5DR104Z	CAP.CC	100nF/50V +80/-20%	4
C951-956	17-1.6MR226M	CAP.EL (MINI)	22uF/16V +/-20%	6
C957.958	17-5DR104Z	CAP.CC	100nF/50V +80/-20%	2
D951-954	30-1N4148	DIODE SWITCH	1N4148	4
D251	30-1N4148	DIODE SWITCH	1N4148	1
ZD251	30-1:2Z12V	ZD	12V 0.5W	1
Q252	30-PN2907	TRANSISTOR	PN2907A	1
Q253	30-2SC1815GR	TRANSISTOR	2SC1815GR	1
CN251	12-1087-6BU	CONNECTORS	6P BLUE	1
JP951	14-3301-1	WIRE ASS'Y	460mm BLUE	1
JP952	14-3301	WIRE ASS'Y	3P L=500mm	1
SK251	12-1103-30	PIN HEADERS	30P(15Px2) L T	1
SK951	12-1102-26	PIN HEADERS	26P(13Px2) ROW	1
RV951-956	29-4187	VR	10KK 9mm	6
U251	30-NJM2068D	IC	NJM2068D	1
U252	30-MC14577BP	IC	MC14577BP	1
U951-953	30-NJM2068D	IC	NJM2068D	3
U253.U254	30-TC4051BP	IC	TC4051BP	2
U255	30-TC4052BP	IC	TC4052BP	1
S951	31-1251	SW SLIDE	2P 3W	1
S952	31-1255	SLIDER SW	SLB16MP-065W	1
	90-1709	P.S&PHONES MODULE		
	19-1709*A	PCB	174x121x1.6T FR4	1
R241	16-1S473J	RES SIP	47Kx8 9P +/-5%	1
R501.502	16-1:6CA102J	RES CF	1K 1/6W +/-5%	2
R503.504	16-1:6CA103J	RES CF	10K 1/6W +/-5%	2
R505	16-1:6CA102J	RES CF	1K 1/6W +/-5%	1
R506	16-1:6CA102J	RES CF	1K 1/6W +/-5%	1
R507.508	16-1:6CA272J	RES CF	2K7 1/6W +/-5%	2
R509.510	16-1:2AN331J	RES.MO	330 1/2W +/-5%	2
R511.512	16-1:6CA102J	RES CF	1K 1/6W +/-5%	2
R513.514	16-1:6CA152J	RES CF	1K5 1/6W +/-5%	2
R515.516	16-1:6CA681J	RES CF	680 1/6W +/-5%	2
R517.518	16-1:6CA222J	RES CF	2K2 1/6W +/-5%	2
R551	16-1:6CA103J	RES CF	10K 1/6W +/-5%	1
R800	16-1:6CA221J	RES CF	220 1/6W +/-5%	1
R901-904	16-1:4CA223J	RES CF	22K 1/4W +/-5%	4
R905.906	16-1:4CA103J	RES CF	10K 1/4W +/-5%	2
R907.908	16-1:4CA101J	RES CF	100 1/4W +/-5%	2
R909.910	16-1:4CA473J	RES CF	47K 1/4W +/-5%	2
R911.912	16-1:4CA224J	RES CF	220K1/4 +/-5%	2
R931	16-1:4CA103J	RES CF	10K 1/4W +/-5%	1
R932-935	16-1:4CA104J	RES CF	100K 1/4W +/-5%	4
R936	16-1:4CA105J	RES CF	1M 1/4W +/-5%	1
R937	16-1:4CA823J	RES CF	82K 1/4W +/-5%	1
R938	16-1:4CA472J	RES CF	4K7 1/4W +/-5%	1
C501	17-3.5EF228M	CAP.EL	2200uF/35V +/-20%	1

PARTS LIST

AMC AV81HTc-DD SERVICE PARTS LIST				
SYMBOL NO.	PARTS NO.	DESCRIPTION	SPECIFICATION	Q'TY
C502	17-1.6EF108M	CAP.EL	1000uf/16V +/-20%	1
C503.504	17-3.5EF228M	CAP.EL	2200uF/35V +/-20%	2
C506	17-5DR104Z	CAP.CC	100nF/50V +80/-20%	1
C507	17-5ER105M	CAP.EL	1uf/50V +/-20%	1
C508	17-5ER226M	CAP.EL	22uf/50V +/-20%	1
C509	17-5ER105M	CAP.EL	1uf/50V +/-20%	1
C510.511	17-5ER105M	CAP.EL	1uf/50V +/-20%	2
C512-515	17-5ER106M	CAP.EL	10uf/50V +/-20%	4
C516	17-2.5ER226M	CAP.EL	22uf/25V +/-20%	1
C800	17-5DR104Z	CAP.CC	100nF/50V +80/-20%	1
C901.902	17-1.6ER106M	CAP.EL	10uf/16V +/-20%	2
C903.904	17-1.6ER226M	CAP.EL	22uf/16V +/-20%	2
C905.906	17-5DR103M	CAP.CC	0.01uf/50V +/-20%	2
C907	17-1.6ER106M	CAP.EL	10uf/16V +/-20%	1
C931	17-1.6ER107M	CAP.EL	100uf/16V +/-20%	1
C932	17-5FR104J	CAP.PP	0.1uF/50V +/-5%	1
C933	17-1.6ER226M	CAP.EL	22uf/16V +/-20%	1
C934.935.936	17-1.6ER106M	CAP.EL	10uf/16V +/-20%	3
ZD501	30-1:2Z10V	ZD	10V 0.5W	1
ZD502.503	30-1:2Z12V	ZD	12V 0.5W	2
ZD931	30-1:2Z5V6	ZD	5V6 0.5W	1
D501-508	30-1N4002	DIODE	1N4002 1A	8
D554	30-1N4007	DIODE	1N4007 1A	1
D551	30-1N4148	DIODE	1N4148	1
Q501	30-MJE2955T	POWER TR	MJE2955T	1
Q502	30-TIP32	TRANSISTOR	TIP32	1
Q503	30-TIP31	TRANSISTOR	TIP31	1
Q504.505.506	30-2SC1815GR	TRANSISTOR	2SC1815GR	3
Q507.508	30-2SA1015GR	TRANSISTOR	2SA1015GR	2
Q509	30-2SJ104V	JFET	2SJ104V	1
Q551	30-MPS6724	TRANSISTOR	MPS6724	1
Q552	30-2SA1015GR	TRANSISTOR	2SA1015GR	1
Q901	30-PN2222	TRANSISTOR	PN2222A	1
Q931	30-PN2907	TRANSISTOR	PN2907A	1
Q932	30-PN2222	TRANSISTOR	PN2222A	1
U241	30-TC4532BP	IC	TC4532BP	1
U501	30-LM7805A	IC	LM/AN/NJM/7805FA 1A	1
U502	30-LM7905A	IC	LM/AN/NJM/7905FA 1A	1
U503	30-LM7805A	IC	LM/AN/NJM/7805FA 1A	1
U901	30-NE5532	IC	NE5532N	1
U931	30-TL071	IC	TL071N/LF351	1
JK801	12-2165	RCA JACK	1P CDM7(MD5402)	1
MJ931	12-2161	HEADPHONE JACK	3.5 ¢	1
CN241	12-1087-5YL	CONNECTORS	5P YELLOW	1
CN406	12-1087-2WT	CONNECTORS	2P WHITE	1
CN501	12-1087-5WT	CONNECTORS	5P WHITE	1
CN502	12-1087-2BU	CONNECTORS	2P BLUE	1
CN503	12-1087-2WT	CONNECTORS	2P WHITE	1
CN504	12-1087-6WT	CONNECTORS	6P WHITE	1
CN551	12-1087-3BU	CONNECTORS	3P BLUE	1
CN808	12-1087-4WT	CONNECTORS	4P WHITE	1
CN901	12-1087-9WT	CONNECTORS	9P WHITE	1
	13-4086	ISOLATOR TUBE	ISOLATOR TUBE	5
	13-4127	ISOLATOR MICA TO-220	ISOLATOR MICA	5

PARTS LIST

AMC AV81HTc-DD SERVICE PARTS LIST				
SYMBOL NO.	PARTS NO.	DESCRIPTION	SPECIFICATION	Q'TY
W501	W2-0D180-10TML	WIRE	#22 1015 180mm+TML	1
HJ901	12-2128	HEADPHONE JACK	9P PC-MT	1
WA701	14-1188	WIRE ASS'Y	2P WHITE L=60mm	1
LD423.701	30-1115	LED	CSL300GIDT	2
SW241	31-1245	SW ROTARY	2SC1815GR	1
SW401	31-1246	SW PUSH	NON-LOCK	1
RL551	35-3039	RELAY	DC 9V VS-9MB TV-5	1
JK802	12-2171	TOSLINK JACK	1P RX176	1
L801	29-1114	COIL CHOKE	4.7uH +/-10%	1
	11-5097-2	HEAT SINK		1
	11-2143	PCB BKT		2
	90-1710	DISPLAY PCB MODULE		
	19-1710*A	PCB	131x57x1.6T FR4	1
R401-406	16-1:6CA104J	RES CF	100K 1/6W +/-5%	6
R407.408	16-1:4CA104J	RES CF	100K 1/4W +/-5%	2
R409	16-1:4CA151J	RES CF	150 1/4W +/-5%	1
R410	16-1:6CA122J	RES CF	1K2 1/6W +/-5%	1
R411	16-1:4CA471J	RES CF	470 1/4W +/-5%	1
R412.413	16-1:6CA103J	RES CF	10K 1/6W +/-5%	2
R414	16-1:6CA472J	RES CF	4K7 1/6W +/-5%	1
R415	16-1:6CA473J	RES CF	47K 1/6W +/-5%	1
R416	16-1:6CA103J	RES CF	10K 1/6W +/-5%	1
R417	16-1:6CA102J	RES CF	1K 1/6W +/-5%	1
R418.419	16-1:6CA471J	RES CF	470 1/6W +/-5%	2
R420.421	16-1:6CA471J	RES CF	470 1/6W +/-5%	2
C401	17-1.6ER106M	CAP.EL	10uf/16V +/-20%	1
C402	17-5DR102K	CAP.CC	1000pf/50V +/-10%	1
C403	17-5DR103M	CAP.CC	0.01uf/50V +/-20%	1
C404	17-5FR222J	CAP.PP	0.0022uF/50V +/-5%	1
D401-407	30-1N4148	DIODE SWITCH	1N4148	7
Q401-410	30-2SC1815GR	TRANSISTOR	2SC1815GR	10
Q411	30-2SA1015GR	TRANSISTOR	2SA1015GR	1
Q412	30-PN2907	TRANSISTOR	PN2907A	1
Q413	30-2SC1815GR	TRANSISTOR	2SC1815GR	1
U401	30-TC4051BP	IC	TC4051BP	1
U402	30-LM3915	IC	LM3915	1
U403	30-74HCU04	IC	74HCU04AP	1
WA401	14-1185	WIRE ASS'Y	2P WHITE L=320m	1
WA403	14-1186	WIRE ASS'Y	2P YEL L=150mm	1
WA402	14-1187	WIRE ASS'Y	2P BLUE L=305mm	1
WA404	14-1176	WIRE ASS'Y	7P WHITE L=90mm	1
WA405	14-1177	WIRE ASS'Y	7P BLUE L=90mm	1
IR401	30-LTM9052-4	IR	LTM9052-4/SBX1610-52	1
LD401-408	30-1115	LED	CSL300GIDT	8
LD409	30-SE30031DT	LED	SE30031DT	1
LD410-418	30-SE6221	LED	CSL-620GIAT	9
LD414	30-SE6231	LED	CSL-620YIAT	1
LD420.421	30-L469EGW	LED	L-469EGW RED/GRN	2
LD422.423	30-L469EGW	LED	L-469EGW RED/GRN	2
	13-8244-6	SPACER	FOR LED3-6mm	9
RN401.403	16-1:6CA104J	RES CF	100K 1/6W +/-5%	2
RN402.404	16-1:6CA154J	RES CF	150K 1/6W +/-5%	2

WELTRONICS CORP.

1414 Fair Oaks Rd., Suite #7

South Pasadena, CA91030

Tel: 1-616-799-6396

Fax: 1-626-7996541