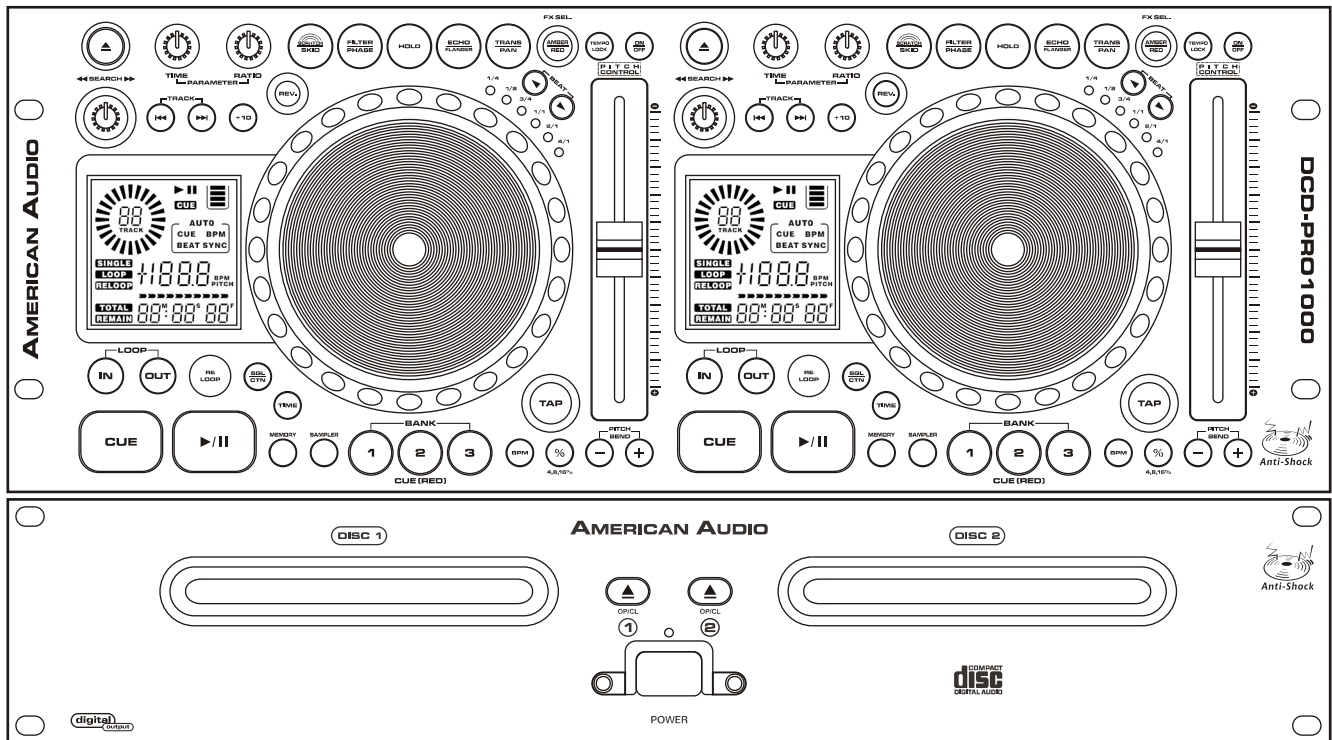


AMERICAN AUDIO

DCD-PRO1000 DUAL CD PLAYER



SERVICE MANUAL

GENERAL SPECIFICATION

1. APPLICATION	Model DCD-PRO 1000 Professional CD Player.		
2. POWER SOURCE	AC 115/230V, 50/60Hz, 25W		
3. DIMENSIONS	MAIN UNIT	482 (W) x 88.8 (H) x 262 (D) mm	
	CONTROL UNIT	482 (W) x 177 (H) x 65.5 (D) mm	
4. WEIGHT	MAIN UNIT	5.6 Kgs	
	CONTROL UNIT	3 Kgs	

5. FEATURES

- (1) 10 seconds of anti-shock memory per deck
- (2) Instant start
- (3) Seamless loop
- (4) Pitch range : +/-100% +/-0.1%
- (5) Scratch play
- (6) Reverse play
- (7) Auto/manual BPM
- (8) Echo effect (Echo time 0ms ~2000ms +/-1ms)
- (9) Filter effect (Span time 0ms +/-1ms ~500ms +/-5ms ~ 1000ms +/-10ms~9990ms)
- (10) Break effect (Break time 0ms +/-1ms ~500ms +/-5ms ~ 1000ms +/-10ms~9990ms)
- (11) Flanger effect (Flanger time 10ms +/-1ms ~1000ms +/-10ms ~9990ms)
- (12) Pan effect (Pan time 0ms +/-1ms ~500ms +/-5ms ~ 1000ms +/-10ms~9990ms)
- (13) Trans effect (Trans time 0ms +/-1ms ~500ms +/-5ms ~ 1000ms +/-10ms~9990ms)
- (14) 3 banks for Sampler and Cue memory, > 6 sec. Each bank
- (15) Volume balance between music and sampler
- (16) Mixer between music and sampler, can adjust pitches separately
- (17) Auto cue function (-48dB)
- (18) 500 * 3 sampler (cues) can be memoried and share both sides
- (19) Selectable ellapsed, remain and total remain time display
- (20) Single/continuous play
- (21) Relay play allows consecutive playback during two decks
- (22) S/PDIF digital audio RCA coaxial
- (23) High current phones output.
- (24) Super vibration free slot-in mechanism.
- (25) LCD display.
- (26) Music Master Tempo
- (27) 6 effect-sync parameter sets: 1/4,2/4,3/4,1/1,2/1 and 4/1

6. CHARACTERISTICS (TEST DISC: TCD-782, LOAD=47Kohm)

ITEM	NORMAL	LIMIT	CONDITION
(1) Output level	1.0Vrms+/-1dB	1.0V+/-1dB	1KHz,0dB
(2) Channel balance	0.5dB	1.0dB	1KHz,0dB
(3) Frequency response	+/-0.5dB	+/-1.0dB	20Hz-20KHz,0dB
(4) De-emphasis response	+/-2.5dB	+/-3dB	16KHz,-20dB
(5) Channel separation*	83dB	75dB	1KHz,0dB
(6) T.H.D. + NOISE*	0.01%	0.03%	1KHz,0dB
(7) S/N ratio (IHF-A)*	86dB	80dB	1KHz,0dB

NOTE: * With 20KHz low pass filter.

7. SEARCHING TIME (TEST DISC: TCD-792)

ITEM	NORMAL	LIMITS	CONDITION
(1) Short access time	1.7sec	4sec	Play next track
(2) Long access time	3sec	6sec	Track 1 ->Track 20
			Track 20 ->Track 1

GENERAL SPECIFICATION

8. PLAYABILITY

ITEM	NORMAL	LIMIT	CONDITION
(1) Interruption	1000um	700um	TCD-725
(2) Black dot	1000um	600um	TCD-725
(3) Finger prints	75um	65um	TCD-725
(4) Eccentricity	140um	140um	TCD-712 NO TRACK JUMP
(5) Vertical deviation	1mm	0.54mm	TCD-731R

9. PICK-UP

(1) System	Object lens drive system optical pick-up
(2) Object lens drive system	2 dimensional paralalled drive
(3) Tracking detection	3 spot beam detection
(4) Optical source	Semiconductor laser
(5) Wave length	780nm

10. GENERAL

(1) System	Compact Disc Digital Audio
(2) Disc loading	Front loading
(3) Display	LCD
(4) Pitch control range	Within +/-4%, +/-8%, +/-16%, +/-100%
(5) Pitch bend	+/-100%
(6) Pitch accuracy	0.1 %

11. ENVIRONMENTAL

	CONDITION
(1) Operating Temperature	5 to 35 deg. C
(2) Humidity	25 to 85% RH (non-condensing)
(3) Storage Temperature	-20 to 60 deg. C

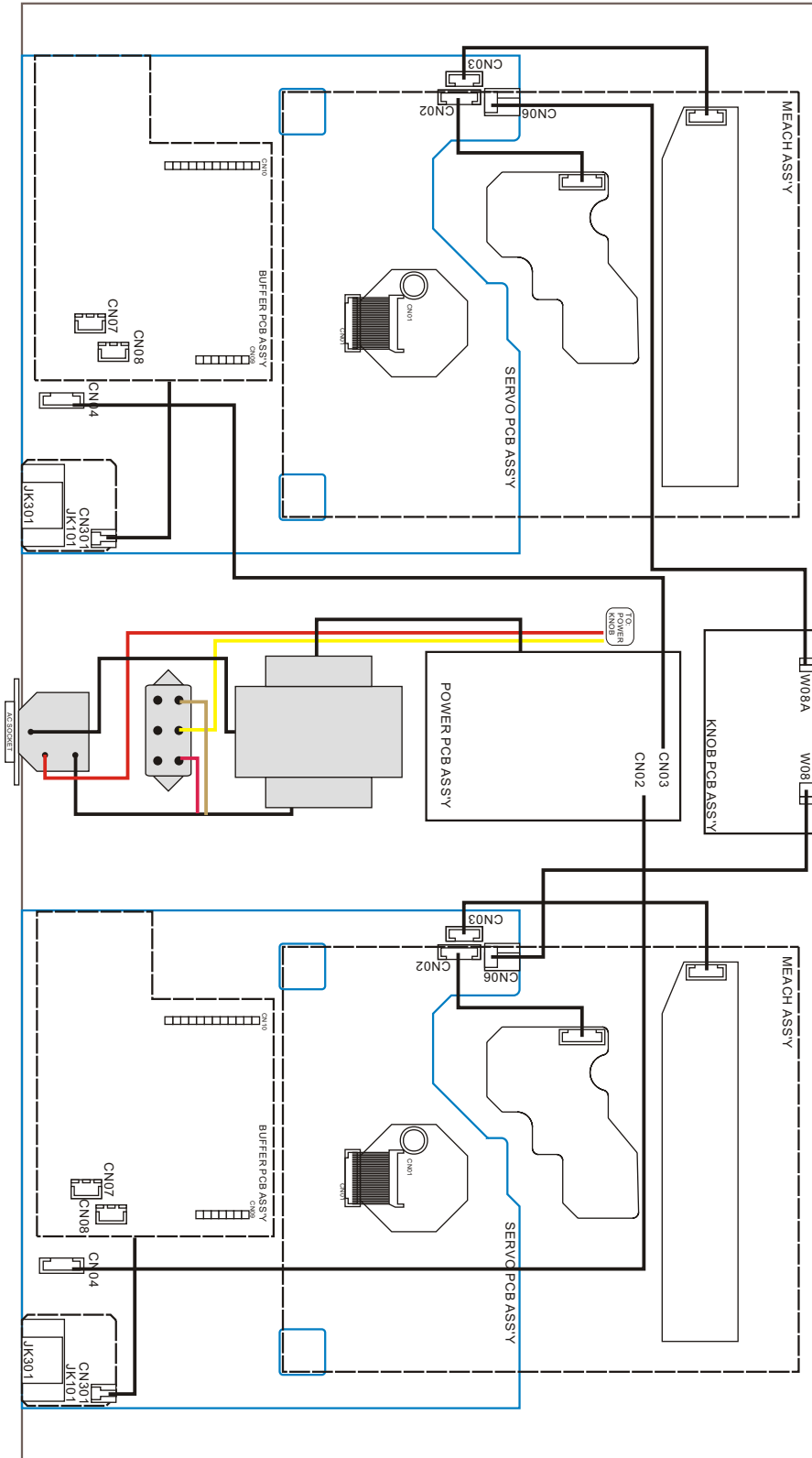
12. ACCESSORIES

8P Mini din Cable	2 pcs
AC Cord	1 pc
Auto-Start Cable	2 pcs
2P RCA Cord	2 pc
Operating Instruction	1 pc

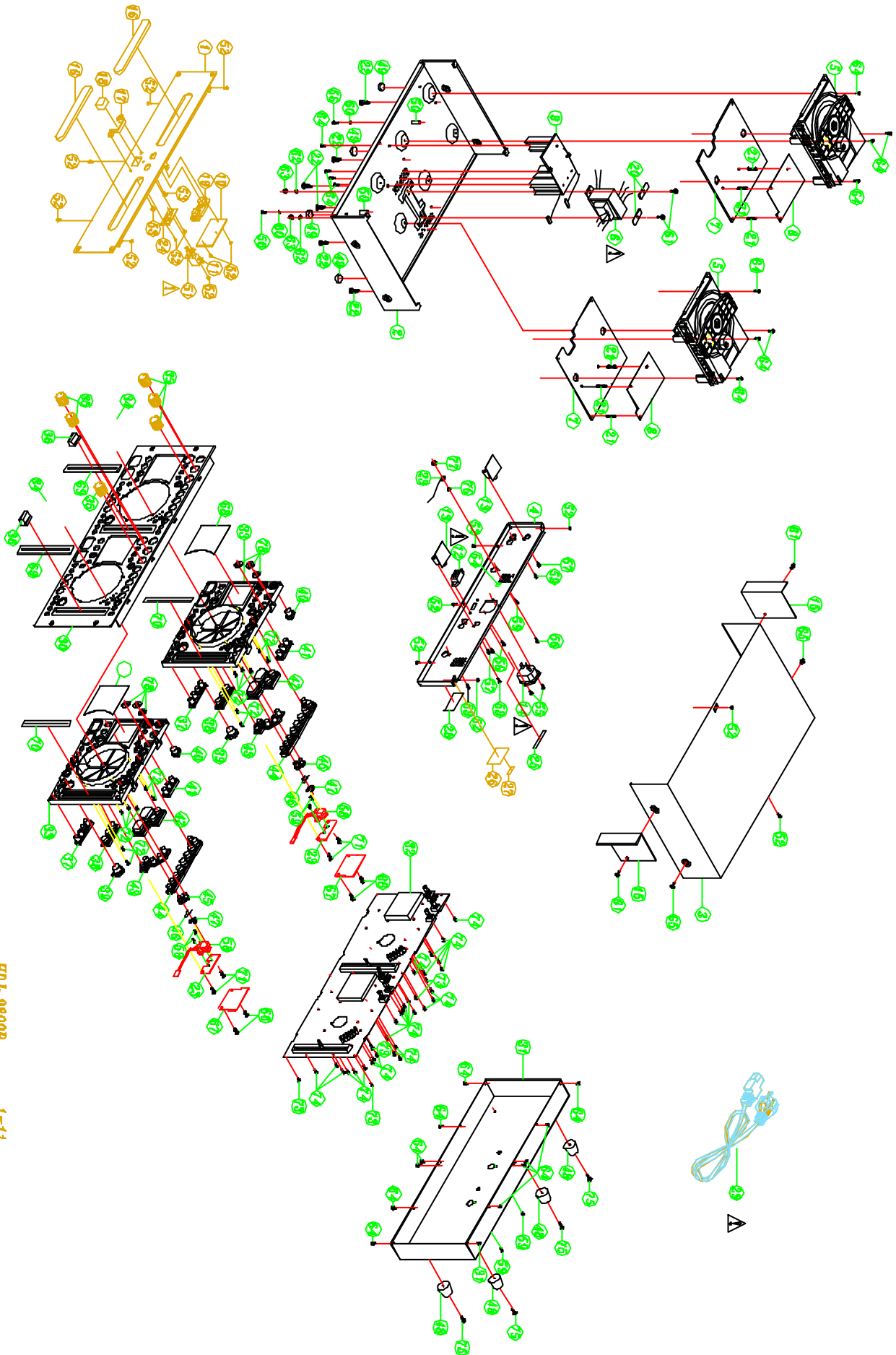
13. NOTES

- (1) The specifications are subject to change to any improvement by negotiations in advance.
- (2) The parts are subject to change to any improvement within the range of the specifications.

POINT TO POINT DIAGRAM



EXPLODED VIEW



HDJ-9800B

1-11

EXPLODED VIEW PART LIST

REF. NO.	DESCRIPTION	PART NO.	Q' TY	REMARK
1	MAIN UNIT FRONT PANEL ASS'Y	703-9800B-788	1	
2	MAIN UNIT BOTTOM	300-HDJ7000-479	1	
3	MAIN UNIT COVER	300-HDJ200-342A	1	
4	BACK BOARD	300-HDJ9800-526F	1	
5	MECHA ASS'Y	704-HDJ201-162	2	
6	TRANSFORMER(115/230V,60/50Hz,EI-66,UL1411)	411-HDJ9800-297	1	
7	SERVO PCB ASS'Y	704-9800-4691	2	
8	BUFFER PCB ASS'Y	704-9800-4692	2	
9	POWER PCB ASS'Y	704-9800-5021	1	
10	BUTTON PCB ASS'Y	704-HDJ7100-1714	1	
11	POWER SW(SDDL1017U-HF,2PIN)	403-A100-005	1	
12	SLIDE SW(L21-22A8,6PIN)	403-HS100-042	1	
13	D-OUT PCB ASS'Y	704-9800-4693	2	
14	AC SOCKET(WTN-1171R1/WTN-02-1171R1-1)	404-CD1000-768	1	
15	ASSIST BOARD	300-HDJ9700-927	2	
16	CD DOOR	100-2460A-1336	2	
17	POWER SW PROTECTOR(PLASTIC)	100-HDJ2400-1300	1	
18	POWER KNOB	100-HDJ200-984	1	
19	MAIN UNIT BUTTON	604-HDJ9500A-137	1	
20	BRACKET TRANSFORMER	300-DV300B-443	2	
21	PCB HOLDER(KCA-20)	504-HDJ2650-080	6	
22	BOARD SUPPORT	504-HDJ7000-031	6	
23	SENSOR FIXED PLATE	300-HDJ9800-981	2	
24	POWER SWITCH BRACKET	300-HDJ7000-478	1	
25	FUSE LABEL	501-PRODJ2-1298A	1	
26	RATING LABEL	501-9800B-1124	1	
27	SERIES NO. LABEL	501-DV300-1067		
28	STICKER(CLASS 1)	501-1420SRD-867	1	
29	AC POWER CORD(L=1900+-50mm,UL)	409-PS2-106	1	
30	CONTROLLER FRONT PANEL(AL)	300-HDJ9800-979	1	
31	CONTROL UNIT REAR COVER(SECC,BLACK)	300-HDJ9800-980	1	
32	CONTROL PCB ASS'Y	704-9800-4688	1	
33	FRAME PLASTIC ASS' Y (ABS)	701-HDJ9800-3038	2	
34	TURNTABLE ASS'Y	703-HDJ9800-779	2	
35	ROTATE KNOB(ABS)	100-HPR1-2042	6	
36	SPEED PUSH BUTTON(ABS)	100-DJ5500-2017	2	
37	SILICON BUTTON(SMALL 4PCS,SILICONE)	604-HDJ9800-248	2	
38	SILICON BUTTON(BIG 3PCS,SILICONE)	604-HDJ9800-249	2	
39	TAP BUTTON(SILICONE)	604-HDJ9800-253	2	
40	OPEN BUTTON(SILICONE)	604-HDJ9800-252	2	
41	SILICON BUTTON(SMALL 3PCS,SILICONE)	604-HDJ9800-250	2	
42	SILICON BUTTON(BIG 4PCS,SILICONE)	604-HDJ9800-247	2	
43	SILICON BUTTON(5PCS,SILICONE)	604-HDJ9800-246	2	
44	SILICON BUTTON(9PCS,SILICONE)	604-HDJ9800-245	2	
46		603-PROS2-256	2	
46	SILICON BUTTON(2PCS,SILICONE)	604-HDJ9800-251	2	
47	E RING	606-DJ3000-105	2	
48	FOOT (PVC)	100-HDJ7000-1235	4	
49	MAT FORBASE	612-HDJ201-053	4	
50	SLEEVE	200-HDJ7000-256	2	
51	CNR COVER(HU-12-ULY)	504-CDC2050-105	1	
52	SCREW(BTB,3*5,ZB)	602-QMX2BPM-322	17	
53	SCREW(WPTP,2.6*7,CAP10,ZMC)	602-DV300-5023	2	
54	GROUND LABEL(7*7mm,t=0.08mm)	501-HDJ2700C-1419	1	

EXPLODED VIEW PART LIST

REF. NO.	DESCRIPTION	PART NO.	Q' TY	REMARK
55	SCREW (M3*8 BTF)	602-KMD510-161	2	
56	SCREW(M3*P0.5*L8)	602-HP1010K-178	1	
57	SCREW(3*10 ZK PTP)	602-MK7-131	4	
58	SENSOR PCB ASS'Y	704-9800-4687	2	
59	SCREW(M3*P0.5*5L)	602-MP3-324	8	
60	WASHER	606-B300-039	2	
61	SCREW(W.STN,4*10,ZS)	602-HDJ9700-426	4	
62	SPRING WASHER (BLACK)	606-DJ3000-102	2	
63	NUT	601-F200-001	2	
64	SCREW(3*L8)	602-HP1010K-175	24	
65	SCREW(4*6mm TTB BLACK)	602-HDJ200-214	2	
66	SCREW(PTB,2*6 ,MC)	602-PROS2-363	4	
67	DUST-PROOF SLICE	501-HDJ9800-1648	2	
68	DECORATIONS	501-HDJ9800-1646	2	
69	VR RECORATIVE(PC,0.3t,BLACK)	501-HDJ9800-1647	2	
70	VR CUSHION(0.5t,BLACK)	612-HDJ9700-015	2	
71	SCREW(PTP,3*6,ZB)	602-HDJ9700-423	4	
72	SCREW(M2.6*6 PTP)	602-KMD510-158	14	
73	SCREW(PTP,DIA2*8)	602-DJ3000-269	5	
74	SCREW(2.6*8 PTP)	602-SL24F-099	29	
75	SCREW(W BTP 3*12L)	602-HDJ7000-256	4	
76	WASHER	606-NCDS700-123	1	
77	NUT	601-A100-004	1	

SERVO PCB ASS'Y PART LIST

REF. NO.	DESCRIPTION	PART NO.	Q'TY
	SERVO PCB ASS'Y	704-9800-4691	2
JK104	DIN SOCKET SUPPORT BRACKET	300-HDJ7000-473	1
CN03	5P SOCKET(B5B-PH-K,P=2mm,JST,180 DEGREE)	404-1210S-094	1
CN02	6P SOCKET((B6B-PH-K-S,P=2mm,JST,180 DEGREE)	404-3113-052	1
W11	2P CONNECTOR WIRE(L=160mm,AWM1007 AWG26)	404-CDN88-1187	1
IC103	IC SOCKET(64PIN)	404-DJ1-865	1
CN01	FFC CONNECTOR(P=1.0mm,16PIN)	404-HDJ201-599	1
W08	2P2.5 CONNECTOR WIRE(L=680mm,AWM1533 AWG28,BLUE)	404-HDJ9800-1724	1
CN12	2P SOCKET(B2B-XH-A,P=2.5mm,JST,180 DEGREE)	404-KMD1500-608	1
CN06	3P SOCKET(S3B-XH-A,P=2.5mm,JST,90 DEGREE)	404-KMD3500-609	1
W07	3P2.5 CONNECTOR WIRE(L=90mm,AWM1007 AWG26)	404-HDJ9800-1757	1
CN04	8P CONNECTOR WIRE	404-RCC1055-1569	1
J26,27	JUMPER(0.6mm,L=10mm,H=10mm)	406-2002-105	2
J01,81	JUMPER(0.6mm,L=5mm,H=10mm)	406-2002-106	2
J14,17,62	JUMPER(0.6mm,L=8mm,H=10mm)	406-2002-529	3
J69	JUMPER(0.6mm,L=20mm,H=10mm)	406-3113-176	1
J13	JUMPER(0.6mm,L=15mm,H=10mm)	406-KM300-229	1
W01 TO W01A		406-M400-062	1
R123	CARBON FILM RESISTOR(220 OHM,1/6W,J,T-26)	412-3113-058	1
R119	CARBON FILM RESISTOR(10K OHM,1/6W,J,T-26)	412-3113-068	1
R116	CARBON FILM RESISTOR(1M OHM,1/6W,J,T-26)	412-3113-079	1
RB102	THICK FILM RESISTOR NETWORKS(10K OHM,J,RA TYPE,3R4P)	412-CDN24-427	1
RB101	THICK FILM RESISTOR NETWORKS(10K OHM,J,RA TYPE,7R8P)	412-DJ1-420	1
RB103	THICK FILM RESISTOR NETWORKS(10K OHM,J,RA TYPE,6R7P)	412-KMD280-165	1
IC106	IC(BA5979S,DIP-32)	417-DCM280-596	1
IC108	IC(4558D/6458DF/BA4558,DIP-8)	417-HDJ7000-261	1
IC107	REVERSIZLE MOTOR DRIVER(BA6218/BA6418N)	417-KC720-049	1
JK101	2P RCA JACK(RJ-1078B-10-0320A)	420-HDJ7000-045	1
JK104	P DIN JACK(JY-5012-080)	420-HDJ7000-046	1
	PIN(1P,L=1.2*16mm)	424-D200-001	1
CN10	6P STRIP PIN HEADER(L=31mm,P=2.54mm,180 DEGREES)	424-HDJ7500-058	2
CN09	7P STRIP PIN HEADER(L=31mm,P=2.54mm,180 DEGREES)	424-HDJ7500-059	1
IC106	HEAT SINK	425-CDN88A3-066	1
X102	CRYSTAL 8MHZ	427-DV300-5017	1
X101	CRYSTAL(33.8688MHZ)	427-DV330-043	1
	SPACER SUPPORT(KCA-19)	504-Q2221-078	3
IC106	CLIP FOR HEAT SINK	603-CDN88-291	2
IC103	SERVO IC ASS'Y	704-9300NS-4509	1
	IC(H8-3644,OTP,64PIN)	417-CDN24-339	1
C115	CERAMIC CAPACITOR(1000PF/50V,K,TAPING,Y5P)	413-1430-071	1
C110,112	CERAMIC CAPACITOR(220pF/50V,K,TAPING,Y5P)	413-3113-032	2
C103,105,106,111	CERAMIC CAPACITOR(0.1uF/50V,Z,TAPING,Y5V)	413-3113-035	4
C113,114,116-118	CERAMIC CAPACITOR(0.1uF/50V,Z,TAPING,Y5V)	413-3113-035	5
C127,132,134,136	CERAMIC CAPACITOR(0.1uF/50V,Z,TAPING,Y5V)	413-3113-035	4
C138,142,151	CERAMIC CAPACITOR(0.1uF/50V,Z,TAPING,Y5V)	413-3113-035	3
C163,165,187	CERAMIC CAPACITOR(0.1uF/50V,Z,TAPING,Y5V)	413-3113-035	3
C177,178	CERAMIC CAPACITOR(470pF/50V,K,TAPING,Y5P)	413-3113-036	2
C101,102,104,108	ELEC. CAPACITOR(100uF/10V,M,TAPING 5*11)	413-3113-046	4
C109,126,130	ELEC. CAPACITOR(100uF/10V,M,TAPING 5*11)	413-3113-046	3
C141,162,186	ELEC. CAPACITOR(100uF/10V,M,TAPING 5*11)	413-3113-046	3
C140,161,167,168	ELEC. CAPACTIOR(10uF/25V,M,TAPING 5*11)	413-3113-052	4
C173,174,188	ELEC. CAPACTIOR(10uF/25V,M,TAPING 5*11)	413-3113-052	3
C125	POLYESTER CAPACITOR(0.01uF/50V,J,TAPING)	413-3113-057	1
C133	CERAMIC ACPACITOR(0.068uF/50V,Z,TAPING,Y5V)	413-HDJ7150-807	1
C122,169,170	POLYESTER CAPACITOR(0.0015uF/50V,J,TAPING)	413-HT7016-219	3

SERVO PCB ASS'Y PART LIST

REF. NO.	DESCRIPTION	PART NO.	Q'TY
C171,172	CERAMIC CAPACITOR(150pF/50V,J,TAPING,SL)	413-HT8015-154	2
C149,150	CERAMIC CAPACITOR(12pF/50V,J,TAPING,NPO)	413-KC220-115	2
C135,137,160	ELEC. CAPACITOR(220uF/10V,M,TAPING 6.3*11)	413-KC220-119	3
C121	POLYESTER CAPACITOR(0.047uF/50V,J,TAPING)	413-KT300-099	1
C179	POLYESTER CAPACITOR(0.0033uF/100V,J,TAPING)	413-KT300-103	1
C124	ELEC. CAPACITOR(0.47uF/50V,M,TAPING 5*11)	413-KT350-093	
C120	CERAMIC CAPACITOR(5pF/50V,C,TAPING,NPO)	413-KT350-092	1
C139,164	CERAMIC CAPACITOR((100pF/50V,J,TAPING,SL)	413-PXE90-107	2
Q105	TRANSISTOR(2SC1740R TAPING)	416-3113-007	1
Q101	TRANSISTOR(2SA933SR TAPING OR 2SA608G)	416-3113-008	1
Q103,104	TRANSISTOR(2SD1468 TAPING)	416-3113-009	2
Q102	TRANSISTOR(DTA124TS/2SA1589/DTA124TSATP,TAPING)	416-KE200S-024	1
IC104	IC(LM78L05 TAPING TO-92)	417-PMSE1-161	1
J02-12,15,16	JUMPER	406-3113-175	
J18-25,28-48,50-60	JUMPER	406-3113-175	
J63-68,70-80,82	JUMPER	406-3113-175	
R111	CARBON FILM RESISTOR(33K OHM,1/6W,J,T-26)	412-3113-045	1
R110,134	CARBON FILM RESISTOR(150K OHM,1/6W,J,T-26)	412-3113-046	2
R112,122,139	CARBON FILM RESISTOR(100K OHM,1/6W,J,T-26)	412-3113-047	4
R142,159,160,171	CARBON FILM RESISTOR(100K OHM,1/6W,J,T-26)	412-3113-047	4
R185	CARBON FILM RESISTOR(220K OHM,1/6W,J,T-26)	412-3113-050	1
R101,102	CARBON FILM RESISTOR(12K OHM,1/6W,J,T-26)	412-3113-051	2
R113,114,129	CARBON FILM RESISTOR(15K OHM,1/6W,J,T-26)	412-3113-053	3
R109	CARBON FILM RESISTOR((27K OHM,1/6W,J,T-26)	412-3113-054	1
R155,156,166	CARBON FILM RESISTOR(4.7K OHM,1/6W,J,T-26)	412-3113-055	3
R104,141,144,180	CARBON FILM RESISTOR(470 OHM,1/6W,J,T-26)	412-3113-056	4
R106,117,163,164	CARBON FILM RESISTOR((3.3K OHM,1/6W,J,T-26)	412-3113-057	4
R127,125,126,168	CARBON FILM RESISTOR(220 OHM,1/6W,J,T-26)	412-3113-058	4
R145-147,172-177	CARBON FILM RESISTOR(220 OHM,1/6W,J,T-26)	412-3113-058	9
R170	CARBON FILM RESISTOR(220 OHM,1/6W,J,T-26)	412-3113-058	1
R128,143	CARBON FILM RESISTOR(100 OHM,1/6W,J,T-26)	412-3113-060	2
R105	CARBON FILM RESISTOR(120K OHM,1/6W,J,T-26)	412-3113-062	1
R135,136	CARBON FILM RESISTOR((47K OHM,1/6W,J,T-26)	412-3113-063	2
R121,153,154,178	CARBON FILM RESISTOR(10K OHM,1/6W,J,T-26)	412-3113-068	4
R165,167	CARBON FILM RESISTOR(6.8K OHM,1/6W,J,T-26)	412-3113-069	2
R107,118,137	CARBON FILM RESISTOR(1K OHM,1/6W,J,T-26)	412-3113-078	3
R161,162	CARBON FILM RESISTOR(1K OHM,1/6W,J,T-26)	412-3113-078	2
R138	CARBON FILM RESISTOR(1M OHM,1/6W,J,T-26)	412-3113-079	1
R179	CARBON FILM RESISTOR(1.5K OHM,1/6W,J,T-26)	412-D396-135	1
R132	CARBON FILM RESISTOR(30K OHM,1/6W,J,T-26)	412-DV300-291	1
R103	CARBON FILM RESISTOR(15 OHM,1/6W,J,T-26)	412-HDJ7150-709	1
R140	CARBON FILM RESISTOR(75 OHM,1/6W,J,T-26)	412-KCG220-197	1
R186,188	CARBON FILM RESISTOR(470 OHM,1/6W,J,T-26)	412-KT300-108	2
R169	CARBON FILM RESISTOR(27 OHM,1/4W,J,T-26)	412-PRODJ1-451	1
R157,158,131	CARBON FILM RESISTOR(20K OHM,1/6W,J,T-26)	412-STR880-482	3
D105-108	SWITCHING DIODE(1SS132/1SS133,300mw,55V,T-77)	414-3113-005	4
ZD101	ZENER DIODE(MTZJ5.1-B,1/2W,T-77)	414-HDJ200-056	1
L101,105	BEAD CORE(86-019-A TAPING)	415-HV3500K-090	2
L103,104,106-108	INDUCTOR(10uH TAPING 52mm)	415-MPG100-047	5
L102	MICRO INDUCTOR(33uH)	415-RCC955A-094	1
	SERVO PCB(BARE,94V0,164*164*1.6t)	405-HDJ9800-1021	1
R189-199,212	CHIP RESISTOR(100 OHM,1/8W,J,TP 0805,150V)	412-DV330-304	12
R182,183,201-210	CHIP RESISTOR(10K OHM,1/8W,J,TP 0805,150V)	412-DV330-306	12

SERVO PCB ASS'Y PART LIST

<i>REF. NO.</i>	<i>DESCRIPTION</i>	<i>PART NO.</i>	<i>Q'TY</i>
R211	CHIP RESISTOR(2.2K OHM,1/8W,J,TP 0805,150V)	412-DV330-313	1
R120	CHIP RESISTOR(820K OHM,1/8W,J,TP 0805,150V)	412-HDJ11-712	1
R115	CHIP RESISTOR((470K OHM,1/8W,J,TP 0805,150V)	412-QMX2-120	1
C123	CHIP CAPACITOR(220pF/50V,J,0805 TYPE,NPO)	413-AMC110D-5104	1
C128,129	CHIP CAPACITOR(0.1uF/ 50V,Z,0805 TYPE,Y5V)	413-DV330-313	2
Q107	TRANSISTOR(2SB1695KT146,SMT3)	416-DJS1200-217	1
Q108	CHIP TRANSISTOR((DTC114TKA/DTC114TKAT146,SMT3)	416-HDJ9700-209	1
IC102	IC(CXD3068Q,QFP-80,SMD)	417-DCM280-587	1
IC101	IC(CXA-2581N,SSOP-30,SMD)	417-DCM280-588	1
IC109	IC(74HC74AD SOIC14)	417-DV300-184	1
IC105	IC(DA1191,SOP14)	417-PS2-567	1

CONTROL PCB ASS'Y PART LIST

REF. NO.	DESCRIPTION	PART NO.	Q'TY
	CONTROL PCB ASS'Y	704-9800-4688	1
SW301,302,306	TACT SW(SKHVBE3520-HF,TAPING)	403-DCM270X-101	3
SW307-312,315-317	TACT SW(SKHVBE3520-HF,TAPING)	403-DCM270X-101	9
SW321,323-327,331	TACT SW(SKHVBE3520-HF,TAPING)	403-DCM270X-101	7
SW406-412,415-417	TACT SW(SKHVBE3520-HF,TAPING)	403-DCM270X-101	10
SW332,402,421	TACT SW(SKHVBE3520-HF,TAPING)	403-DCM270X-101	3
SW423-427,431,432	TACT SW(SKHVBE3520-HF,TAPING)	403-DCM270X-101	7
P302,402	VR(RK16Y12SO,100KB)	403-HDJ2000-125	2
J92,71,72	JUMPER(0.6mm,L=10mm,H=10mm)	406-2002-105	3
J74,75	JUMPER(0.6mm,L=10mm,H=10mm)	406-2002-105	2
J65,84,112,104	JUMPER(0.6mm,L=5mm,H=10mm)	406-2002-106	4
J105,95,110,76,174	JUMPER(0.6mm,L=5mm,H=10mm)	406-2002-106	5
J63,68,69,70	JUMPER(0.6mm,L=8mm,H=10mm)	406-2002-529	4
J172,61,67,77	JUMPER(0.6mm,L=8mm,H=10mm)	406-2002-529	4
J161	JUMPER(0.6mm,L=20mm,H=10mm)	406-3113-176	1
W301 TO W301A	3P RIBBON WIRE	406-CDS1000-590	1
W401 TO W401A	3P RIBBON WIRE	406-CDS1000-590	1
IO TO JK301A	GROUND WIRE(L=140mm,BLACK ,AWM1007 AWG22)	406-DJ3000-472	1
J73	JUMPER(0.6mm,L=12.5mm,H=10mm)	406-HC1421FR-292	1
IO TO JK401A	LEAD WIRE(L=50mm,AWM1007 AWG26,BLACK)	406-HDJ2100-414	1
J56,120,138	JUMPER(0.6mm,L=15mm,H=10mm)	406-KM300-229	3
D311-316,411-416	LED (RED)	410-CD6000-122	12
D301,401	BACKLIGHT(BCS-006401BN,BLUE)	410-HDJ9800-237	2
LCD301,401	LCD(USS-H376EV-F)	410-HDJ9800-238	2
R313	CARBON FILM RESISTOR(10K OHM,1/6W,J,T-26)	412-3113-068	1
C312,412,305,405	ELEC. CAPACITOR(100uF/10V,M,TAPING 5*11)	413-3113-046	4
C210	ELEC. CAPACITOR(2.2uF/50V,M,TAPING 4*7,MINI)	413-DV300-5156	1
C203,201	ELEC. CAPACITOR(100uF/10V,M,TAPING 5*7,MINI)	413-HMA2200-5017	2
C219	ELEC. CAPACITOR(10uF/25V,M,TAPING 4*7,MINI)	413-SPPW3-235	1
L202	BEAD CORE(86-019-A TAPING)	415-HV3500K-090	1
Q201	TRANSISTOR(DTC124ES TAPING OR 2SC3400)	416-3113-010	1
P301,401	SLIDE VR(10KB*2,RFA0N12L6501-10KB*2(HF))	418-HDJ9800-195	2
SW333,334,433,434	ENCODER(DC11B2024417(HF))	418-PS2-150	4
CN301,401	2*5P SERIES STRIP PIN HEADER(P=2mm,180DEGREES)	424-HDJ9000-031	2
CN302,402	1*4P2.54 SERIES STRIP PIN HEADER(21N1264-04M15-01G-6)	424-HDJ9700-069	2
X201	CITIZEN BRAND(CSA-309,16MHz)	427-CDN88-072	1
X301,401	CERAMIC RESONATOR	427-KC220-003	2
D311-316,411-416	LED HOLDER(LED-9,H=9mm)	504-TT100-070	12
SW303-305,313,314	TACT SW(SKHVBE3520-HF,TAPING)	403-DCM270X-101	5
SW318-320,328-330	TACT SW(SKHVBE3520-HF,TAPING)	403-DCM270X-101	6

CONTROL PCB ASS'Y PART LIST

<i>REF. NO.</i>	<i>DESCRIPTION</i>	<i>PART NO.</i>	<i>Q'TY</i>
SW322,401,403-405	TACT SW(SKHVBE3520-HF,TAPING)	403-DCM270X-101	5
SW413,414,418-420	TACT SW(SKHVBE3520-HF,TAPING)	403-DCM270X-101	5
SW422,428-430	TACT SW(SKHVBE3520-HF,TAPING)	403-DCM270X-101	4
J03-43,45-55,57-60	JUMPER	406-3113-175	
J62,64,78,79,81-83	JUMPER	406-3113-175	
J85-88,90,91,93	JUMPER	406-3113-175	
J97-103,106-109	JUMPER	406-3113-175	
J113-119,121-135	JUMPER	406-3113-175	
J139-149,153-160	JUMPER	406-3113-175	
J162-171,173	JUMPER	406-3113-175	
J175-195,151	JUMPER	406-3113-175	
R324-329,424-429	CARBON FILM RESISTOR(470 OHM,1/6W,J,T-26)	412-3113-056	12
R314-323,414-423	CARBON FILM RESISTOR(220 OHM,1/6W,J,T-26)	412-3113-058	20
R330,333-335,337	CARBON FILM RESISTOR(220 OHM,1/6W,J,T-26)	412-3113-058	5
R343-345,351,430	CARBON FILM RESISTOR(220 OHM,1/6W,J,T-26)	412-3113-058	5
R433,434,437,438	CARBON FILM RESISTOR(220 OHM,1/6W,J,T-26)	412-3113-058	4
R440,442,444	CARBON FILM RESISTOR(220 OHM,1/6W,J,T-26)	412-3113-058	3
R445,448,450	CARBON FILM RESISTOR(220 OHM,1/6W,J,T-26)	412-3113-058	3
R217-219,310,311	CARBON FILM RESISTOR(10K OHM,1/6W,J,T-26)	412-3113-068	5
R332,336,338-341	CARBON FILM RESISTOR(150 OHM,1/6W,J,T-26)	412-KE200S-137	6
R348,349,432,435	CARBON FILM RESISTOR(150 OHM,1/6W,J,T-26)	412-KE200S-137	4
R436,439,441	CARBON FILM RESISTOR(150 OHM,1/6W,J,T-26)	412-KE200S-137	3
R443,449,451	CARBON FILM RESISTOR(150 OHM,1/6W,J,T-26)	412-KE200S-137	3
R302,402	CARBON FILM RESISTOR(27 OHM,1/4W,J,T-26)	412-PRODJ1-451	2
D210	SWITCHING DIODE(1SS132/1SS133,300mw,55V,T-77)	414-3113-005	1
L201	BEAD CORE(86-019-A TAPING)	415-HV3500K-090	1
L301,401	INDUCTOR(10uH TAPING 52mm)	415-MPG100-047	2
IC202	SOCKET(PLCC32TS)	404-007USB-1548	1
	CONTROL PCB(BARE)	405-HDJ9800-1016A	1
	L VR PCB(BARE)	405-HDJ9800-1018	1
	R VR PCB(BARE)	405-HDJ9800-1019	1
D331D,305C,D	CHIP LED(RED,LTST-C190KRKT)	410-HDJ9700-214	3
D306C,D,307C,D	CHIP LED(RED,LTST-C190KRKT)	410-HDJ9700-214	4
D308C,D,309A,B	CHIP LED(RED,LTST-C190KRKT)	410-HDJ9700-214	4
D310A,B,317A,B	CHIP LED(RED,LTST-C190KRKT)	410-HDJ9700-214	4
D320C,D,321C,D	CHIP LED(RED,LTST-C190KRKT)	410-HDJ9700-214	4
D322C,D,328A,C	CHIP LED(RED,LTST-C190KRKT)	410-HDJ9700-214	4
D329A,B,330A,B	CHIP LED(RED,LTST-C190KRKT)	410-HDJ9700-214	4
D331C,332C,D	CHIP LED(RED,LTST-C190KRKT)	410-HDJ9700-214	4
D405C,D,406C,D	CHIP LED(RED,LTST-C190KRKT)	410-HDJ9700-214	4
D407C,D,408C,D	CHIP LED(RED,LTST-C190KRKT)	410-HDJ9700-214	4
D409A,B,410A,B	CHIP LED(RED,LTST-C190KRKT)	410-HDJ9700-214	4
D417A,B,420C,D	CHIP LED(RED,LTST-C190KRKT)	410-HDJ9700-214	4
D421C,D,422C,D	CHIP LED(RED,LTST-C190KRKT)	410-HDJ9700-214	4

CONTROL PCB ASS'Y PART LIST

REF. NO.	DESCRIPTION	PART NO.	Q' TY
D424C,D,426C,D	CHIP LED(RED,LTST-C190KRKT)	410-HDJ9700-214	4
D429A,B,430A,B	CHIP LED(RED,LTST-C190KRKT)	410-HDJ9700-214	4
D434A,C	CHIP LED(RED,LTST-C190KRKT)	410-HDJ9700-214	2
D319A,B,321A,B	CHIP LED(BLUE,LTST-C190TBKT)	410-HDJ9700-216	4
D322A,B,324A,B	CHIP LED(BLUE,LTST-C190TBKT)	410-HDJ9700-216	4
D325A,B,331A,B	CHIP LED(BLUE,LTST-C190TBKT)	410-HDJ9700-216	4
D422A,B,332A,B	CHIP LED(BLUE,LTST-C190TBKT)	410-HDJ9700-216	4
D419A,B,421A,B	CHIP LED(BLUE,LTST-C190TBKT)	410-HDJ9700-216	4
D424A,B,426A,B	CHIP LED(BLUE,LTST-C190TBKT)	410-HDJ9700-216	4
D428A,B,431A,B	CHIP LED(BLUE,LTST-C190TBKT)	410-HDJ9700-216	4
D408A,B,420A,B	CHIP LED(YELLOW,LEST-C190KSKT6)	410-HDJ9700-226	4
D305A,B,306A,B	CHIP LED(YELLOW,LEST-C190KSKT6)	410-HDJ9700-226	4
D307A,B,308A,B	CHIP LED(YELLOW,LEST-C190KSKT6)	410-HDJ9700-226	4
D320A,B,405A,B	CHIP LED(YELLOW,LEST-C190KSKT6)	410-HDJ9700-226	4
D406A,B,407A,B	CHIP LED(YELLOW,LEST-C190KSKT6)	410-HDJ9700-226	4
D326C,D,432C,D	CHIP LED(LTST-C190TGKT)	410-HDJ9800-227	4
J01,02,44,66,196	CHIP RESISTOR(0 OHM,1/8W,J,TP 1206,150V)	412-DJ3000-414	5
J80,89,94,96	CHIP RESISTOR(0 OHM,1/8W,J,TP 1206,150V)	412-DJ3000-414	4
J136,137,150,152	CHIP RESISTOR(0 OHM,1/8W,J,TP 1206,150V)	412-DJ3000-414	4
R216	CHIP RESISTOR(100 OHM,1/8W,J,TP 0805,150V)	412-DV330-304	1
R220,312	CHIP RESISTOR(10K OHM,1/8W,J,TP 0805,150V)	412-DV330-306	2
R306-309,406-411	CHIP RESISTOR(10K OHM,1/8W,J,TP 0805,150V)	412-DV330-306	10
R201,208-211	CHIP RESISTOR(10K OHM,1/8W,J,TP 0805,150V)	412-DV330-306	5
R303,305,403,405	CHIP RESISTOR(1M OHM,1/8W,J,TP 0805,150V)	412-DV330-308	4
R301,401	CHIP RESISTOR(47K OHM,1/8W,J,TP 0805,150V)	412-DV330-321	2
R202-207	CHIP RESISTOR(220 OHM,1/8W,J,TP 0805,150V)	412-DV330-333	6
R212-215	CHIP RESISTOR(75K OHM,1/8W,J,TP 0805,150V)	412-HP6000-851	4
R404,304	CHIP RESISTOR(1.5K OHM,1/8W,J,TP 0805,150V)	412-QMX1-035	2
C306,307,406,407	CHIP CAPACITOR(33pF/50V,J,0805 TYPE,NPO)	413-CDN20-081	4
C301,401	CHIP CAPACITOR (680pF/50V,J,0805 TYPE,NPO)	413-CDN20-082	2
C310,410	CHIP CAPACITOR(1000pF/50V,J,0805 TYPE,NPO)	413-DV330-311	2
C202,204,205,208	CHIP CAPACITOR(0.1uF/ 50V,Z,0805 TYPE,Y5V)	413-DV330-313	4
C209,211,212,308	CHIP CAPACITOR(0.1uF/ 50V,Z,0805 TYPE,Y5V)	413-DV330-313	4
C220-222,302-304	CHIP CAPACITOR(0.1uF/ 50V,Z,0805 TYPE,Y5V)	413-DV330-313	6
C308,311,313-316	CHIP CAPACITOR(0.1uF/ 50V,Z,0805 TYPE,Y5V)	413-DV330-313	6
C402-404,413-416	CHIP CAPACITOR(0.1uF/ 50V,Z,0805 TYPE,Y5V)	413-DV330-313	7
C408,411	CHIP CAPACITOR(0.1uF/ 50V,Z,0805 TYPE,Y5V)	413-DV330-313	2
C206,207	CHIP CAPACITOR(20pF/ 50V,J,0805 TYPE,NPO)	413-DV330-315	2
C309,409	CHIP CAPACITOR(3300pF/50V,K,0805 TYPE,X7R)	413-DV330-329	2
D201-209,304,404	SWITCHING DIODE(1SS355,UMD2,SMD,TAPING)	414-CD1000-075	11
D302,303,402,403	CHIP DIODE(SM4002A,DO-214A(SMA))	414-HDJ9700-145	4
IC301,401	IC(LC75834W,SQFP-48)	417-CDU100-684	2
IC203	IC(BA033FP-E2,T0252-3)	417-CTB200-500	1
IC302,402	IC(74HC04/74HC04DT,SOP-14)	417-DCM370E3-378	2
IC201	IC(MAX003,FP-100B)	417-DJ5500-578	1
IC205,206,303-306	IC(74AHC595D)	417-HDJ9800-643	6

CONTROL PCB ASS'Y PART LIST

REF. NO.	DESCRIPTION	PART NO.	Q' TY
IC403-406	IC(74AHC595D)	417-HDJ9800-643	4
IC204	IC(AT45DB011B-SC,SOIC-8)	417-HDJ9800-656	1
IC307,407	IC(NJM-4558M-TE3,8PIN,SMD)	417-PS2-577	2

BUTTON PCB ASS'Y PART LIST

REF. NO.	DESCRIPTION	PART NO.	Q' TY
	BUTTON PCB ASS'Y	704-HDJ7100-1714	1
SW101*2	TACT SW(SKHHAM2520-HF,4PIN)	403-HV3420K-085	2
W08	3P-3P CONNECTOR WIRE ASS' Y(L=110mm,P=2-2.5mm)	404-HDJ7100-772	1
W08A	2P-3P CONNECTOR WIRE ASS' Y(L=270mm,P=2-2.5mm)	404-HDJ7100-773	1
	KEY PCB	405-HDJ7100-387	1
D105	LED (RED)	410-CD6000-122	1
D105	LED HOLDER(LED-7,H=7mm,WHITE)	504-CDN34A-042	1

POWER PCB ASS'Y PART LIST

REF. NO.	DESCRIPTION	PART NO.	Q' TY
	POWER PCB ASS'Y	704-9800-5021	1
CN02	8P2.5 CONNECTOR WIRE(L=390mm,AWM2877 AWG26)	404-HDJ9800-1745	1
CN01	5P SOCKET(P=3.75mm)	404-HV3363K-555	1
CN03	8P2.5 CONNECTOR WIRE(L=310mm,AWM2877 AWG26)	404-SA12-1403	1
R03		412-3113-039	1
R01	RESISTOR(1.8 OHM,1/2W,TAPING)	412-HDJ9800-783	1
C01	ELEC. CAPACITOR(2200uF/16V,M,BULK 12.5*20)	413-3113-053	1
C04	ELEC. CAPACITOR(4700uF/16V,M,BULK 16*26)	413-DV300-293	1
D01-06	RECTIFYING DIODE(1N5392,1.5A/100V,TAPING 52mm)	414-HT7016-031	6
Q01,02	TRANSISTOR(2SB1274)	416-HC1421FR-056	2
IC01	IC(BA05T,3PIN)	417-CDN34A-314	1
IC04	IC(BD4745G/BD4745G-TR)	417-HDJ2000-503	1
IC05	IC(BA08T 3PIN)	417-HMD5000-282	1
IC03	IC(BA033T/FP 3.3V TO220FP 3PIN)	417-HV3500K-253	1
Q01,02,IC01,03	HEAT SINK	425-HDJ2650-040	4
	CABLE TIE	504-S100-004	2
	SCREW(3*8mm BTP)	602-2002-077	4
D05,06	CERAMIC TUBE (4*2*11.5mm)	605-KMD510P-034	4
C14-16	CERAMIC CAPACITOR(0.01uF/50V,Z,TAPING,Z5V)	413-3113-028	3
C03,06,07,11,18	CERAMIC CAP ACITOR(0.1uF/50V,Z,TAPING,Y5V)	413-3113-035	5
C12	ELEC. CAPACITOR(2.2uF/50V,M,TAPING 5*11)	413-3113-045	1
C19	ELEC. CAPACITOR(3.3uF/50V,M,TAPING 5*11)	413-HP1010K-202	1
C20	POLYESTER CAPACITOR(0.027uF/50V,J,TAPING)	413-HT8015-161	1
C05	ELEC. CAPACITOR(470uF/16V,M,TAPING 8*11)	413-HT8015-164	1
C02	ELEC. CAPACITOR(470uF/10V,M,TAPING 8*11)	413-HT8015-169	1
C08-10	ELEC. CAPACITOR(220uF/10V,M,TAPING 6.3*11)	413-KC220-119	3
Q03	TRANSISTOR(DTC124ES TAPING OR 2SC3400)	416-3113-010	1
Q04	TRANSISTORS(2SC3330U-AC)	416-DJ1900-023	1
IC02	IC(79L05A,TAPING,TO-92)	417-CDN44-392	1
	POWER PCB(BARE,94V0,124*120*1.6t)	405-HDJ9800-1224	1
J1-3,5-12	JUMPER	406-3113-175	
R06	CARBON FILM RESISTOR(4.7K OHM,1/6W,J,T-26)	412-3113-055	1
R02	CARBON FILM RESISTOR(10K OHM,1/6W,J,T-26)	412-3113-068	1
R07	CARBON FILM RESISTOR(100 OHM,1/4W,J,T-26)	412-PMSE1-279	1
D09,10	SWITCHING DIODE(1SS132/1SS133,300mw,55V,T-77)	414-3113-005	2
D07,08	DIODE(1N4001,1A/50V,TAPING 52mm)	414-DJ2500-110	2

OUTPUT PCB ASS'Y PART LIST

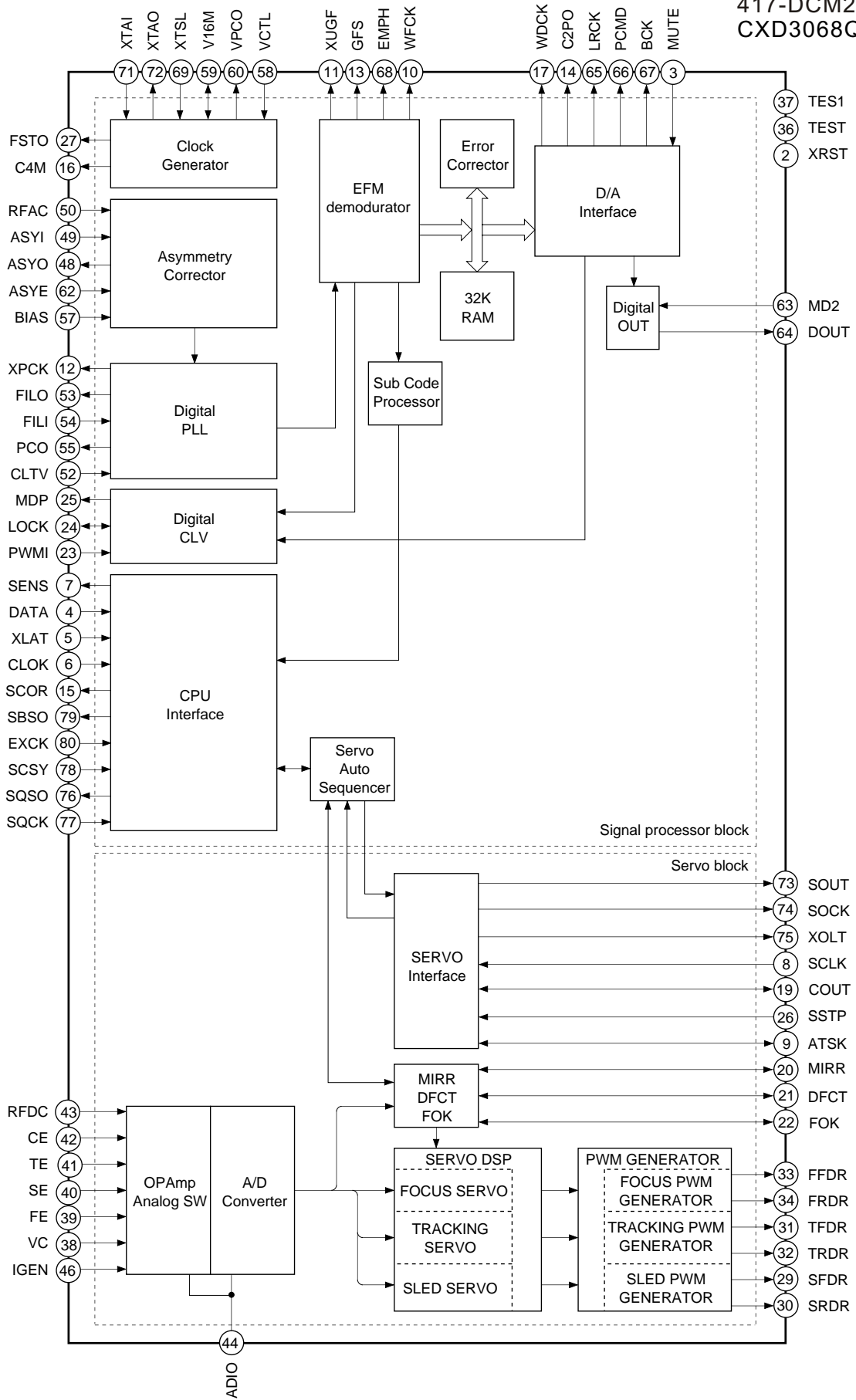
REF. NO.	DESCRIPTION	PART NO.	Q' TY
	OUTPUT PCB ASS'Y	704-9800-4689	1
JK302,402	DIN SOCKET SUPPORT BRACKET	300-HDJ7000-473	2
CN301A,401A	SERIES FEMALE PCB CONNECTORS	404-HDJ9000-014	2
JK302,402	8P DIN JACK(JY-5012-080)	420-HDJ7000-046	2
JK301,401	HEADPHONE JACK(3.5,JY-3535-01-030G)	420-HMDV3360K-5014	2
C317,318,417,418	CERAMIC CAPACITOR(1000PF/50V,K,TAPING,Y5P)	413-1430-071	4
C213-218	CERAMIC CAPACITOR(470pF/50V,K,TAPING,Y5P)	413-3113-036	6
	DIN JACK PCB(BARE,94V0,291*122*1.6t)	405-HDJ9800-1017	1
J01-19	JUMPER	406-3113-175	
R346,347,446,447	CARBON FILM RESISTOR(220 OHM,1/6W,J,T-26)	412-3113-058	4
IC202	CONTROL IC ASS'Y(CHECK SUM:C338/10)	704-9800-4696	1
	IC(W39F010P-70B,PLCC-32)	417-HDJ9800-645	1

D-OUT & SENSOR PCB ASS'Y PART LIST

<i>REF. NO.</i>	<i>DESCRIPTION</i>	<i>PART NO.</i>	<i>Q'TY</i>
	D-OUT PCB ASS'Y	704-9800-4693	2
CN301	2P SOCKET(S2B-PH-K,P=2mm,JST,90 DEGREE)	404-DJ3000-847	1
	D-OUT PCB(BARE,94V0,120*123*1.6t)	405-HDJ2650-649A	1
L301	JUMPER(0.6mm,L=10mm,H=10mm)	406-2002-105	1
R301,C301,Q301-R303	JUMPER(0.6mm,L=5mm,H=10mm)	406-2002-106	3
JK301	1P RCA JACK(RJ-1081-31-0341A)	420-HDJ2650-097A	1
	SENSOR PCB ASS' Y	704-9800-4687	2
	4P2.5 CONNECTOR WIRE(L=90mm,AWM1007/2468 AWG26)	404-PS2-1444	1
	SENSOR PCB(BARE,94V0,90*97.5*1.6t)	405-HDJ9800-1020	1
M301	IC(HEDS-9700#F51)	417-PS2-504	1

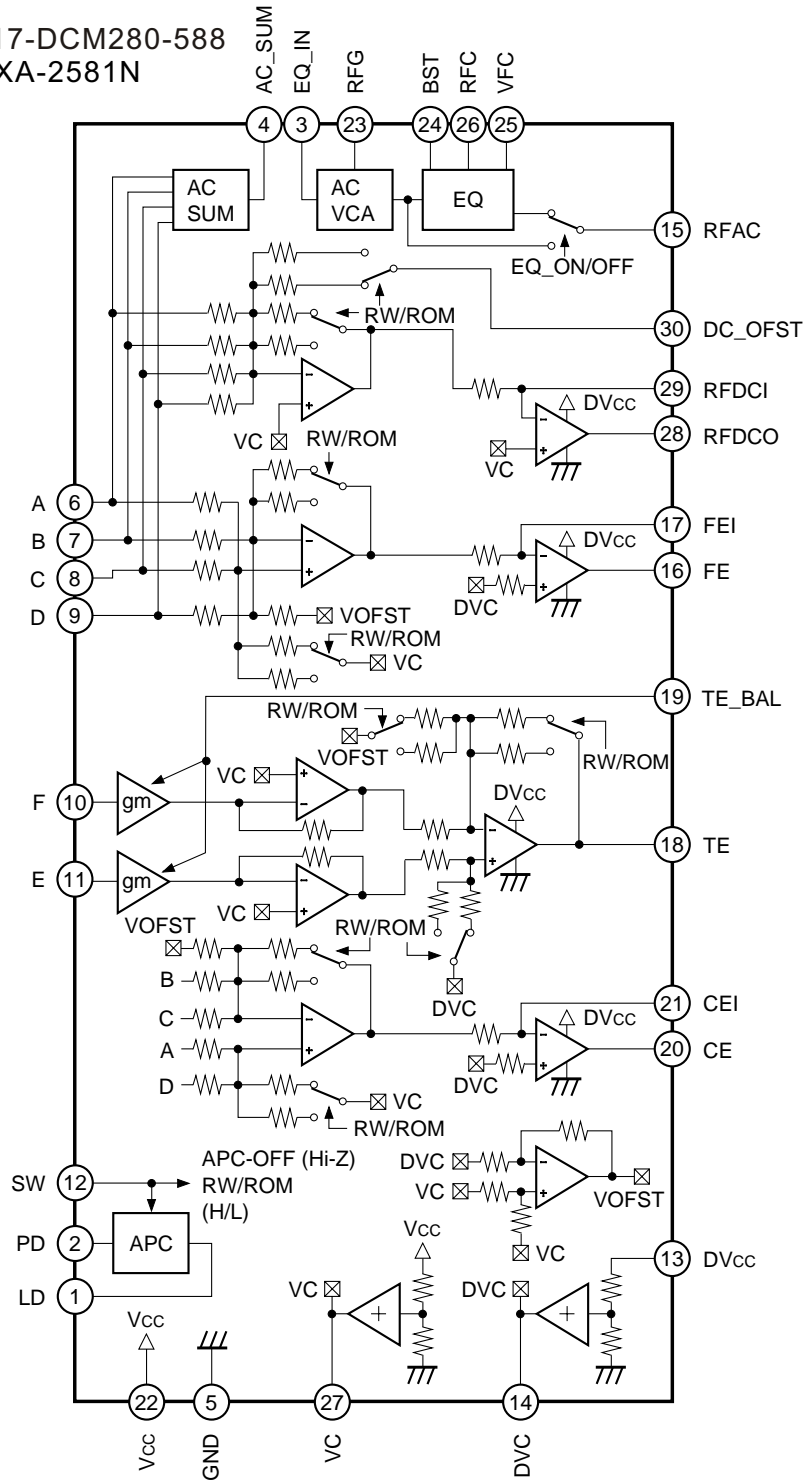
IC BLOCK DIAGRAM

417-DCM280-587
CXD3068Q



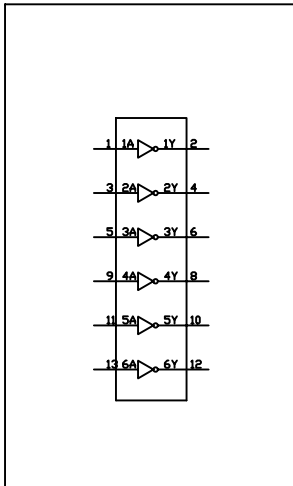
IC BLOCK DIAGRAM

417-DCM280-588
CXA-2581N

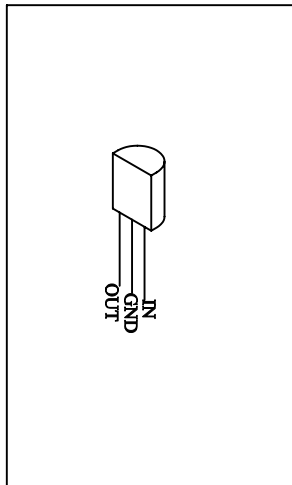


IC BLOCK DIAGRAM

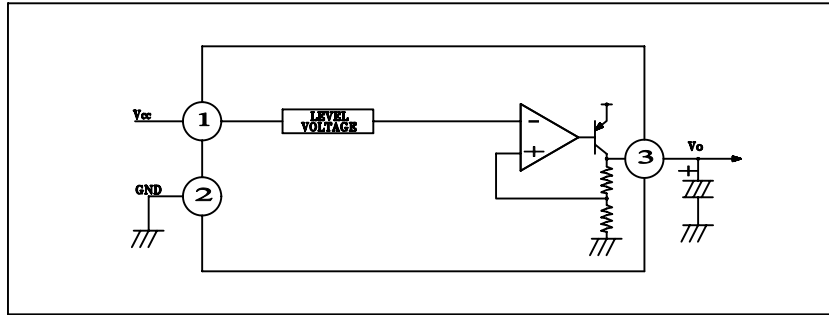
417-DCM370E3-378
74HC04



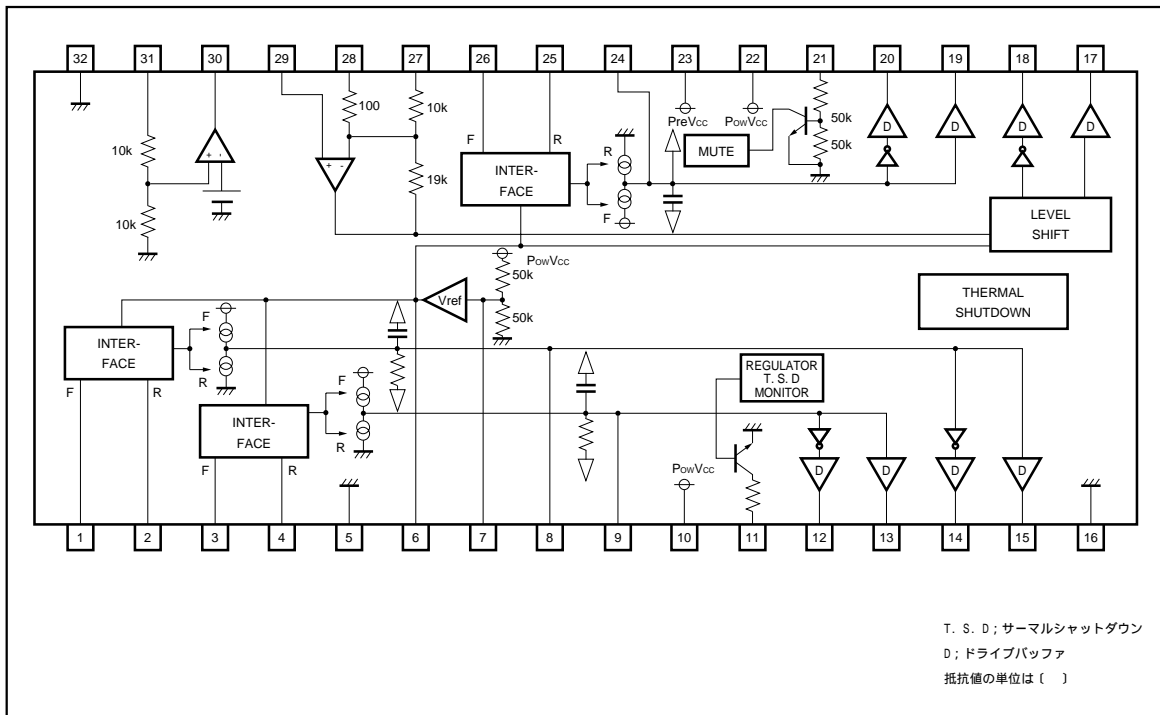
417-PMSE1-161
78L05



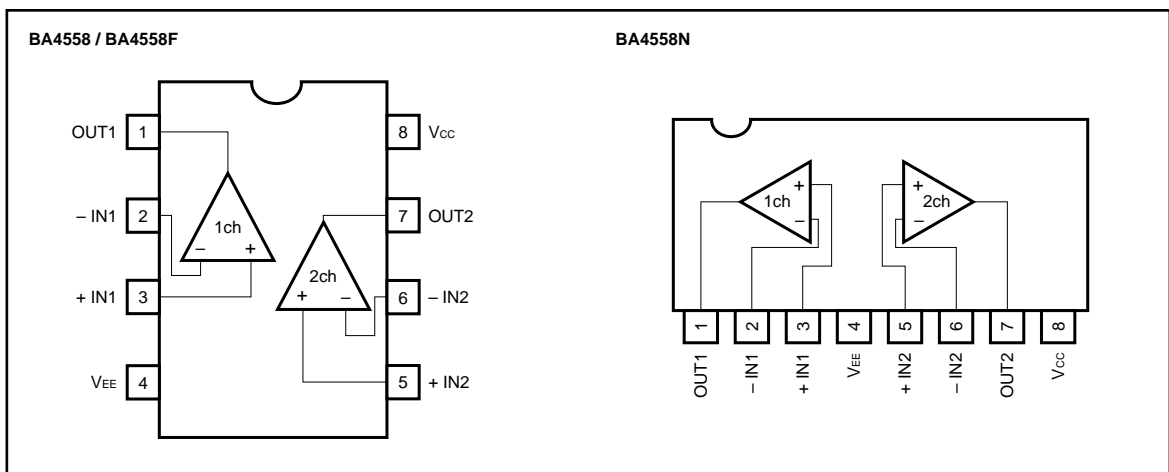
417-HV3500K-253
BA033T



417-DCM280-596
VA5979S

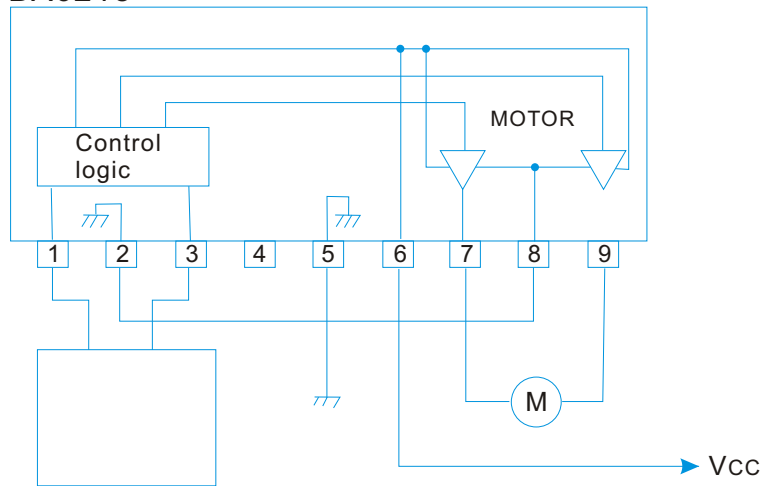


417-HDJ7000-261
4558D/6458DF/BA4558

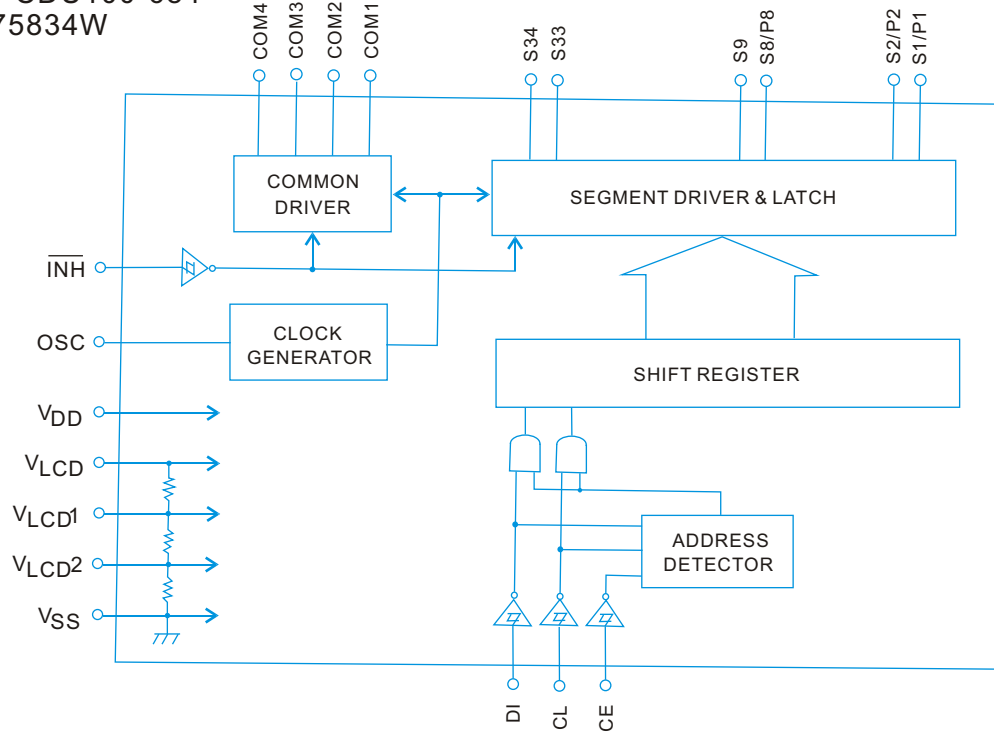


IC BLOCK DIAGRAM

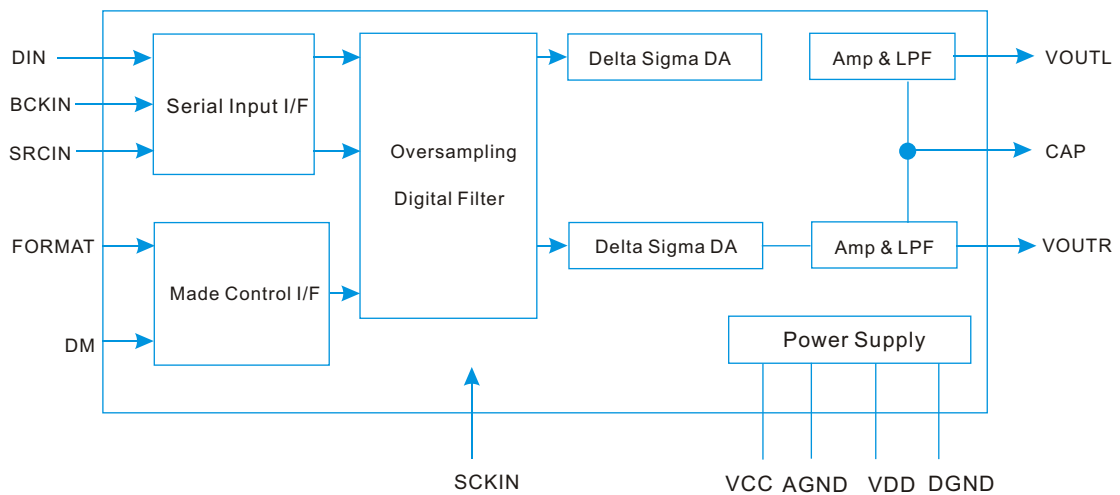
417-KC720-049
BA6218



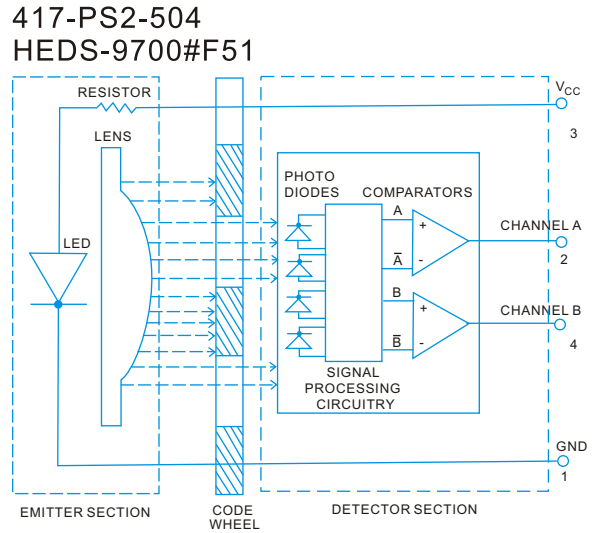
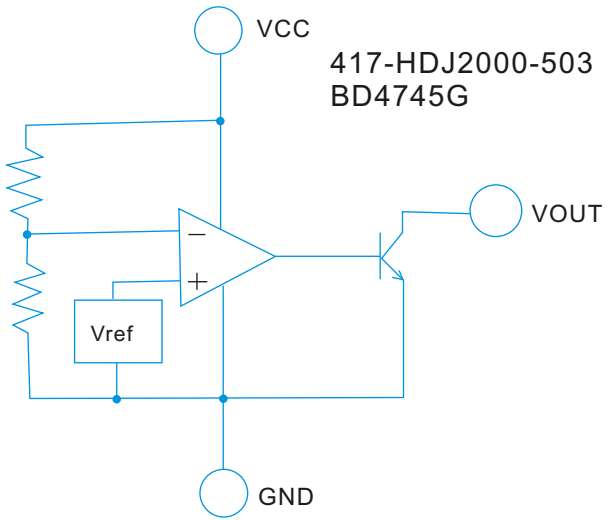
417-CDU100-684
LC75834W



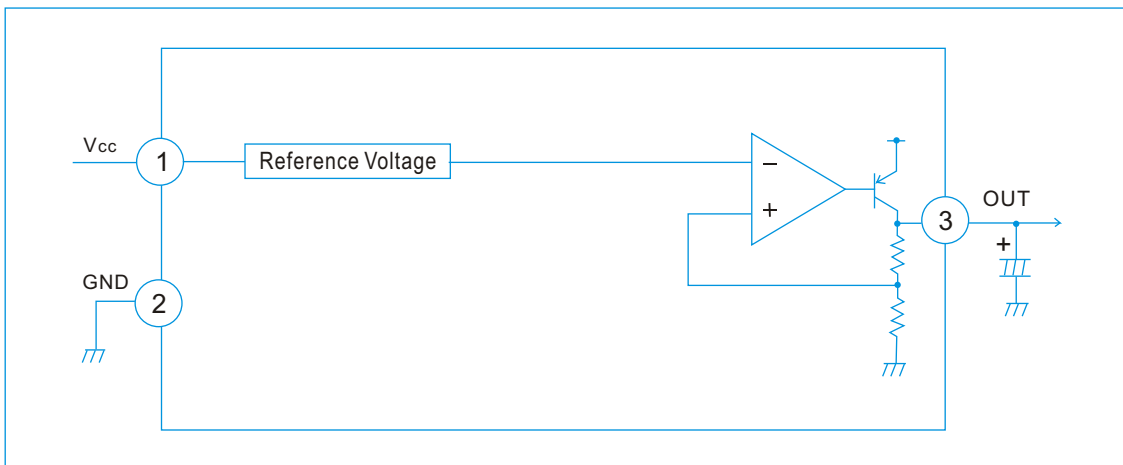
417-PS2-567
DA1191



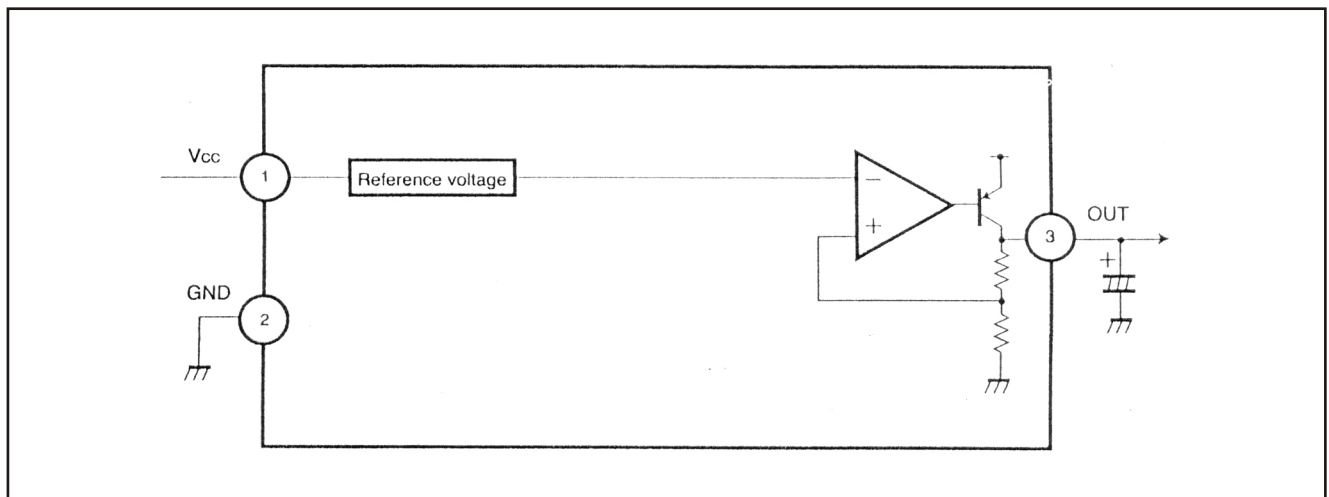
IC BLOCK DIAGRAM



417-CDN34A-314
BA05T

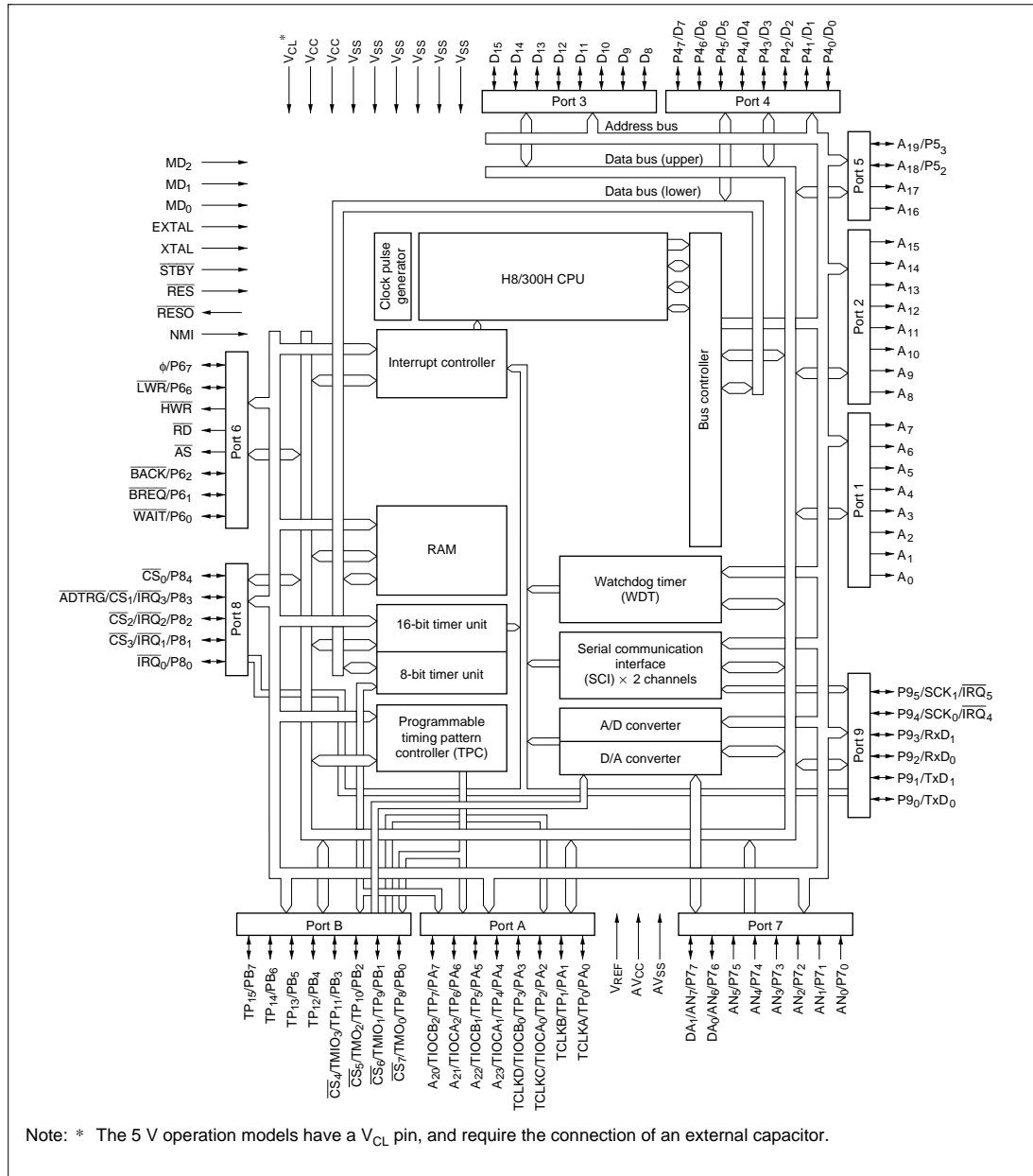


417-CTB200-500
BA033FP T0252-3

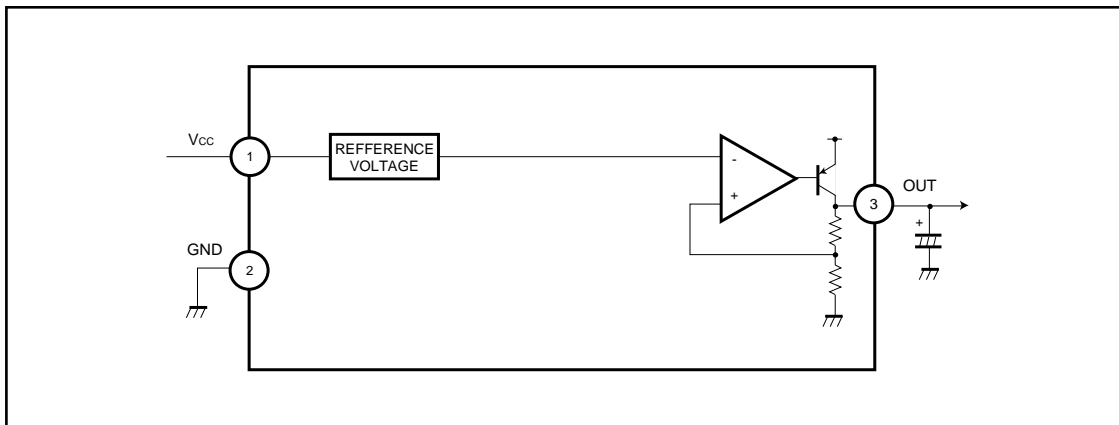


IC BLOCK DIAGRAM

417-DJ5500-578
MAX003



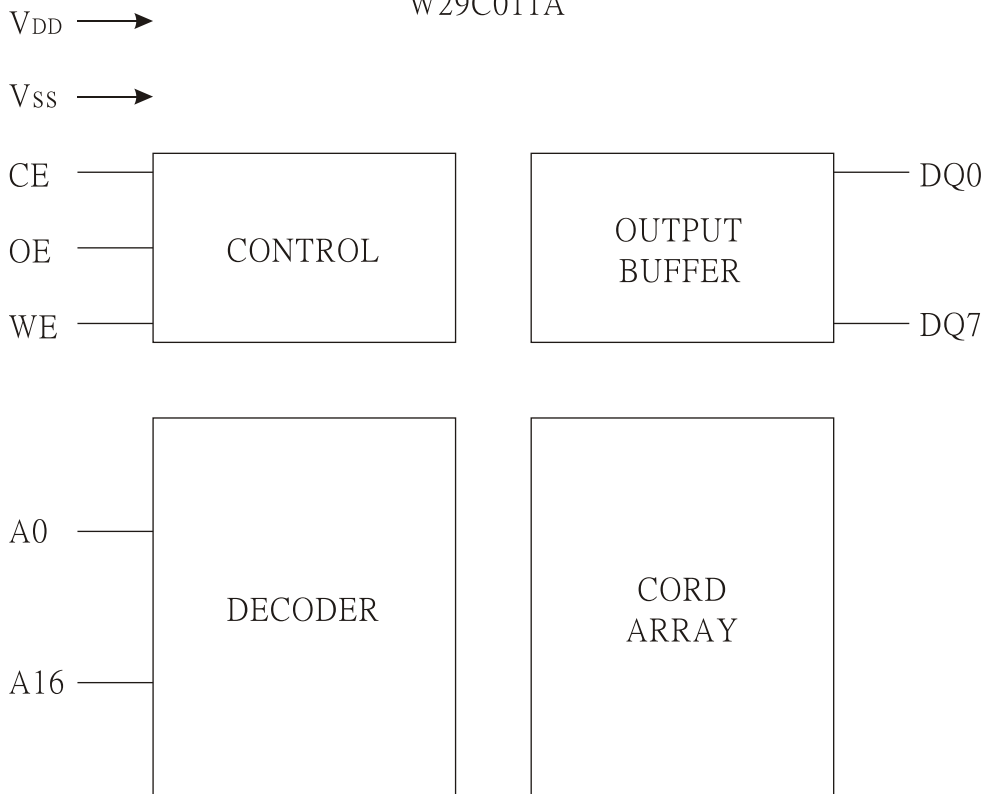
417-HMD5000-282
BA08T



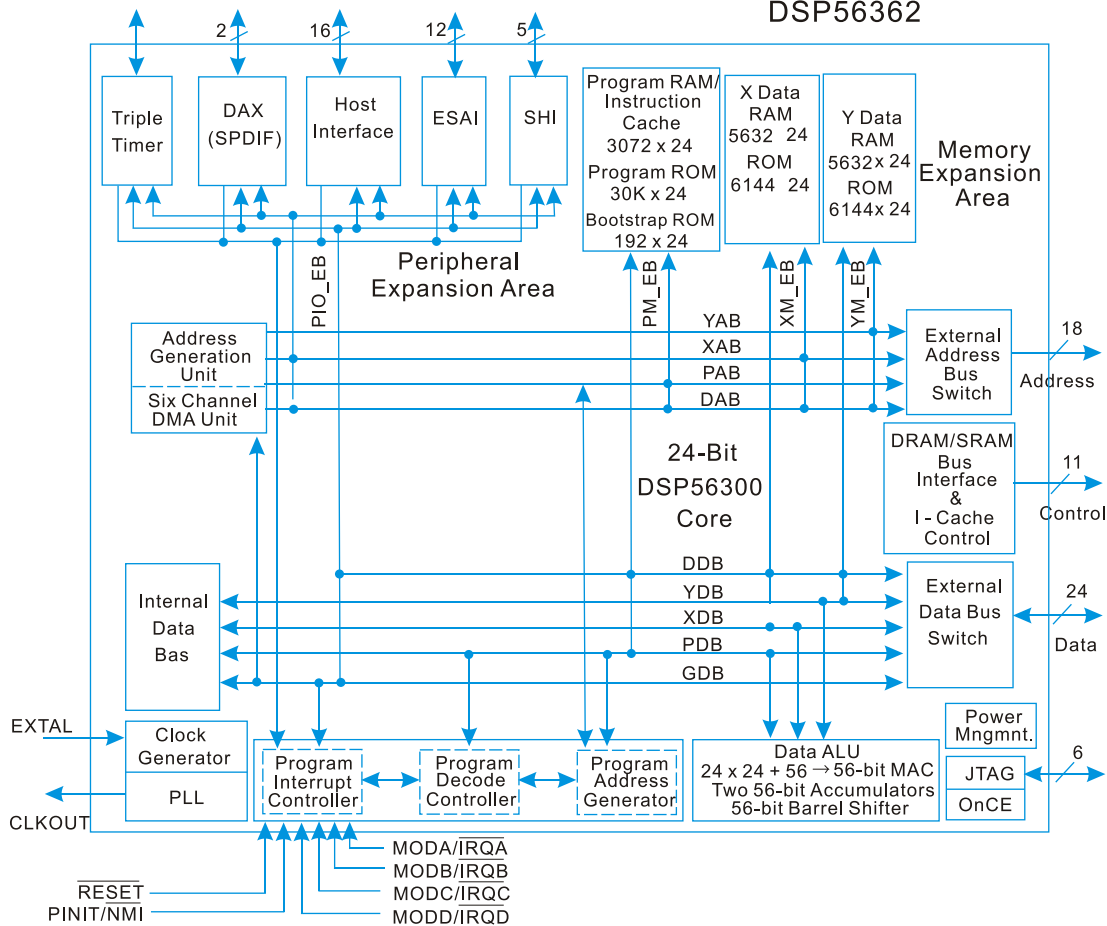
IC BLOCK DIAGRAM

417-HDJ2000-413

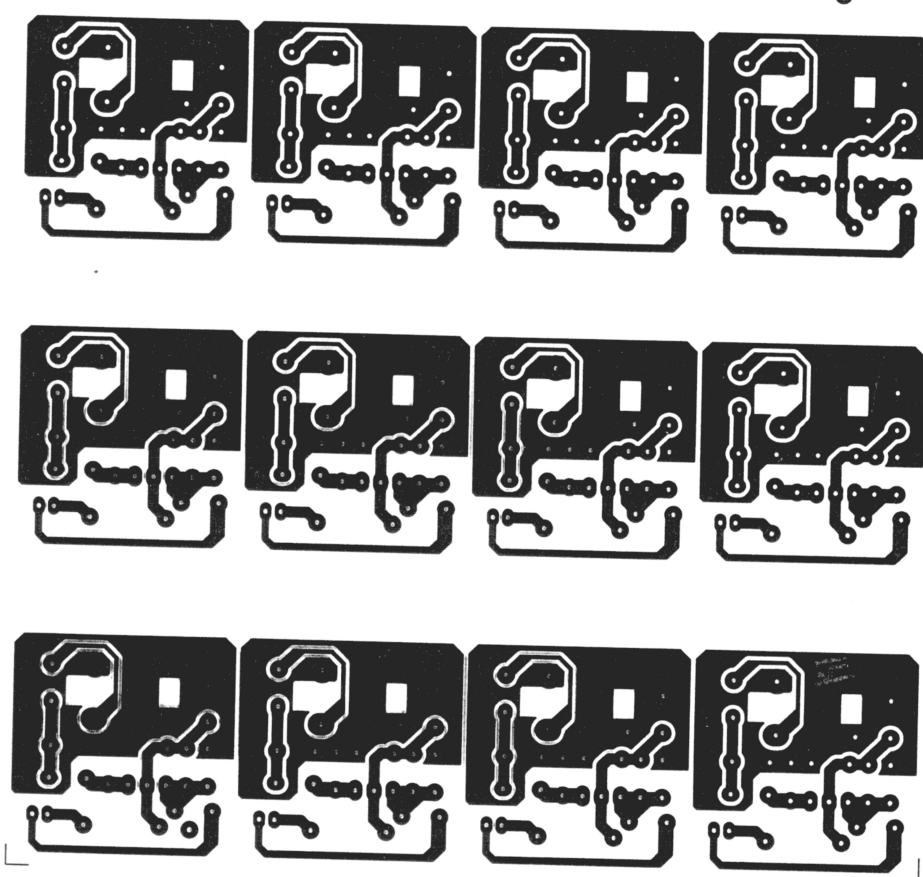
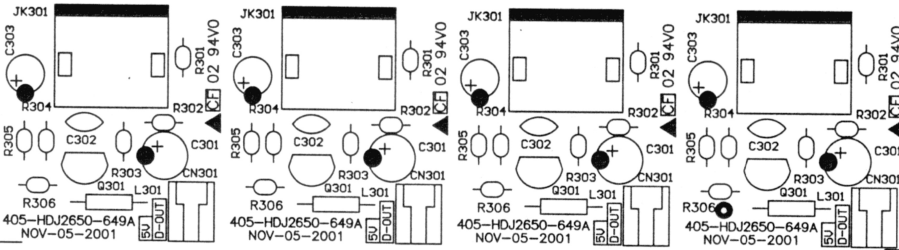
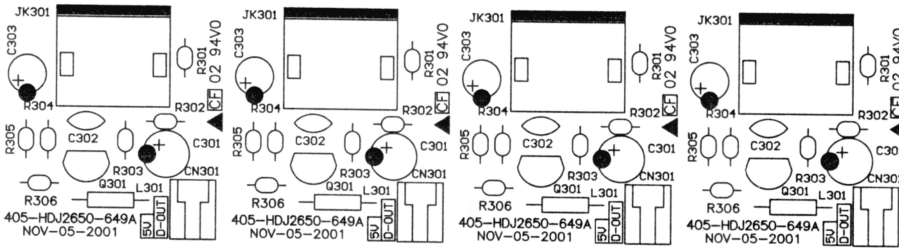
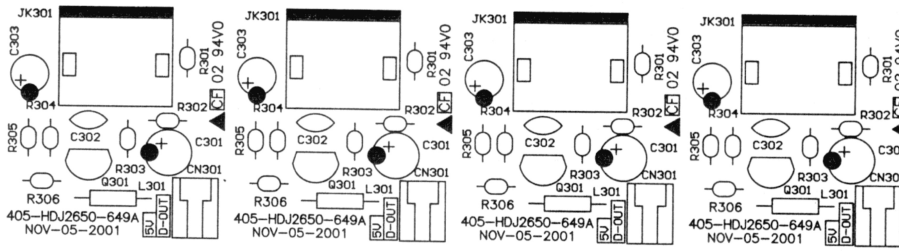
W29C011A

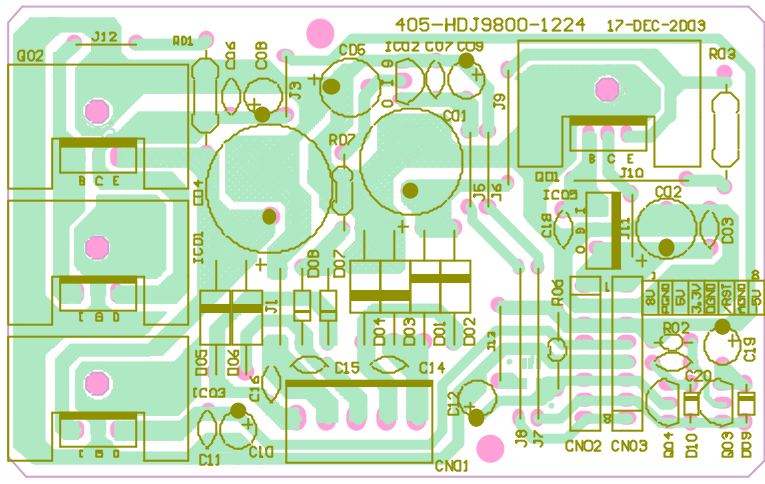
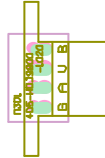


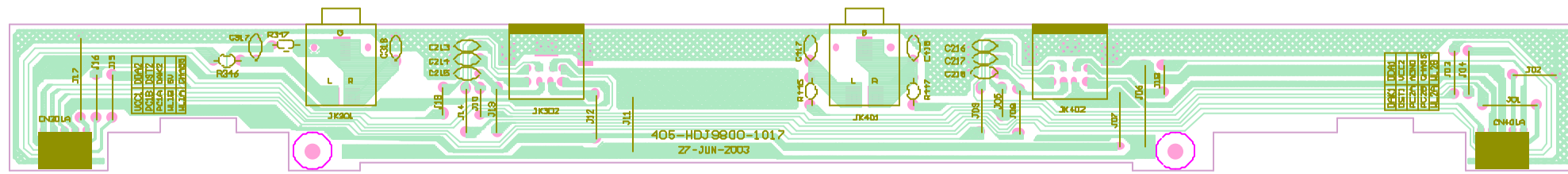
417-HDJ2000-420
DSP56362

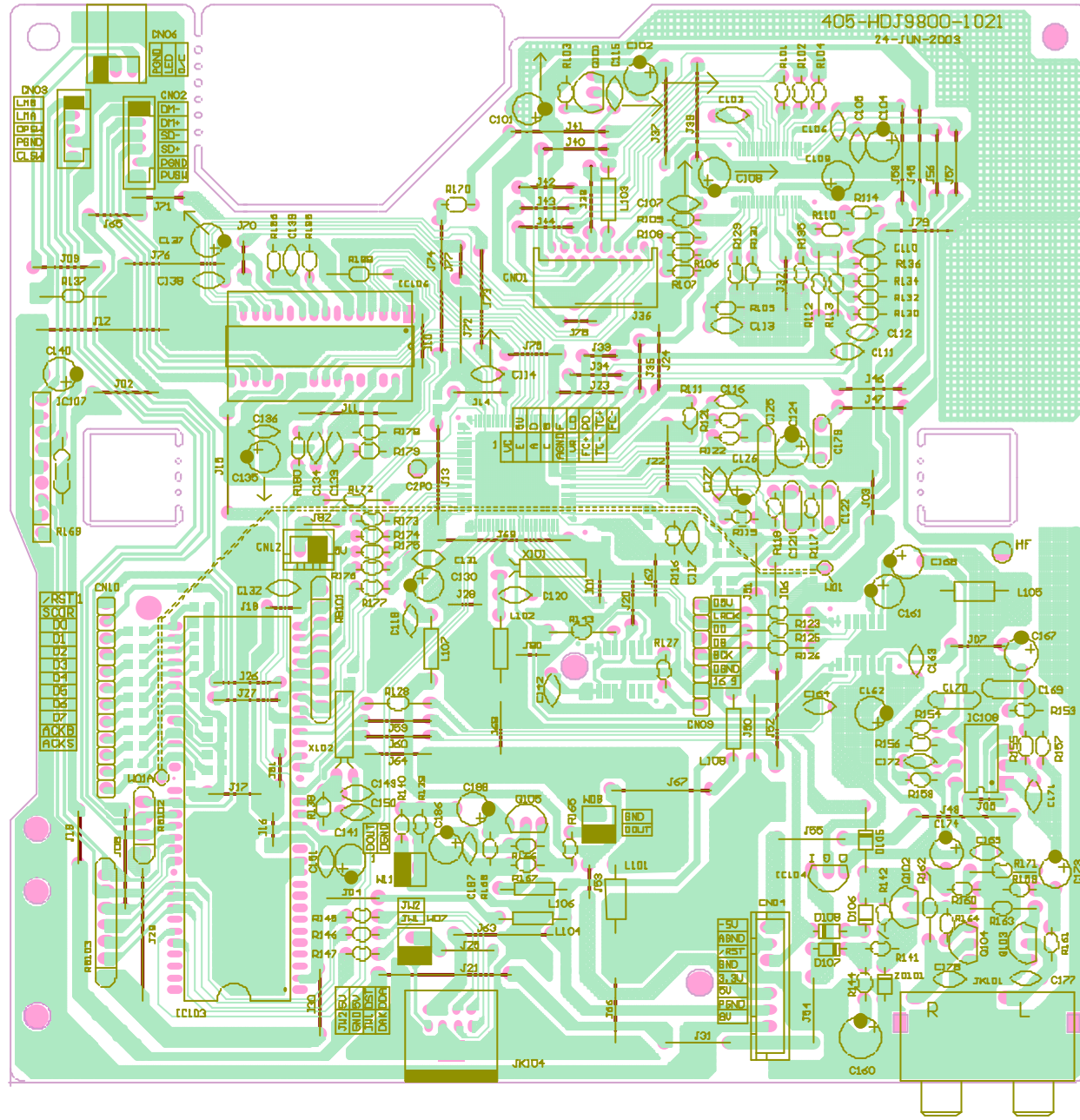


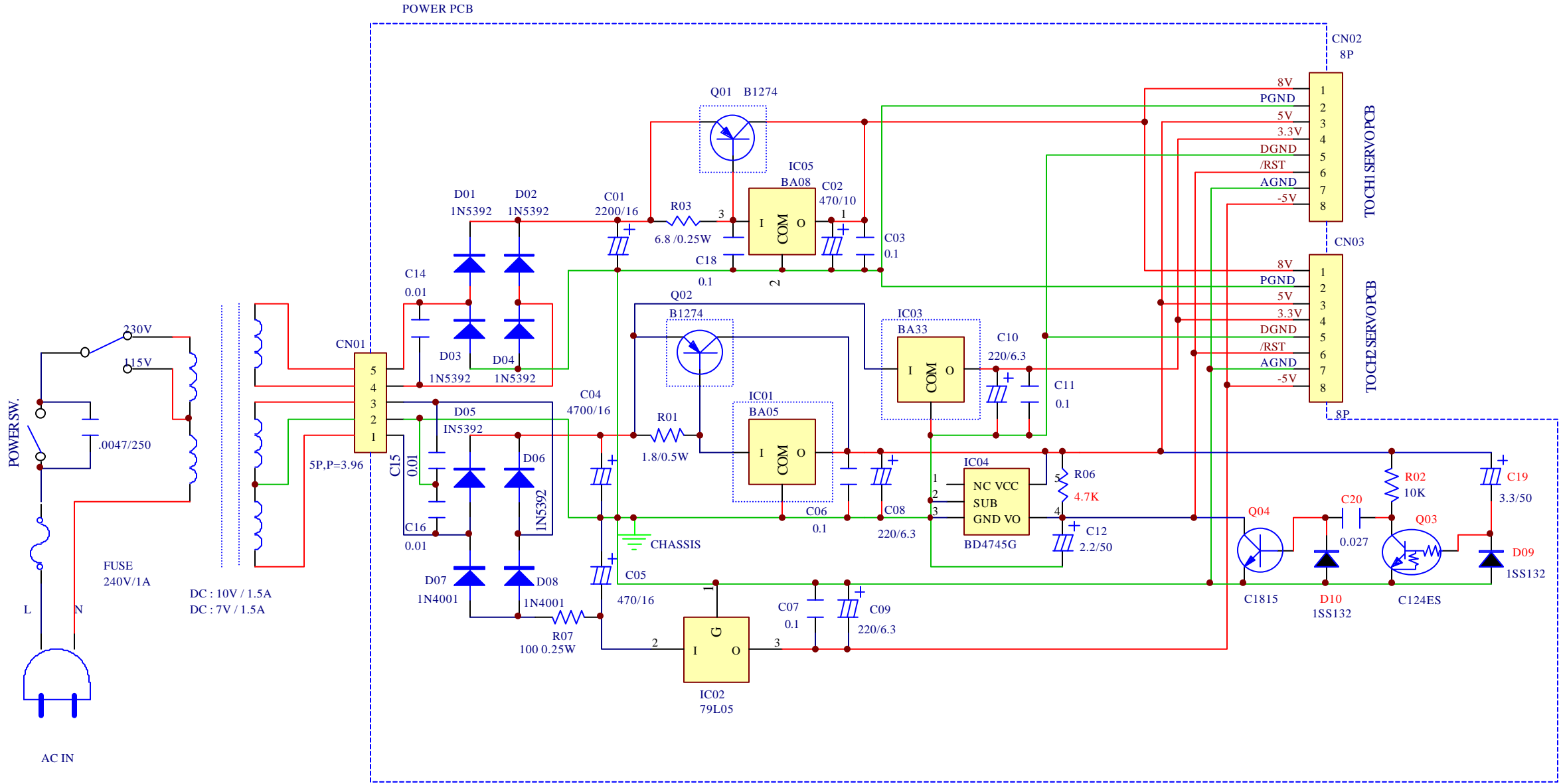
PRINTED CIRCUIT BOARD



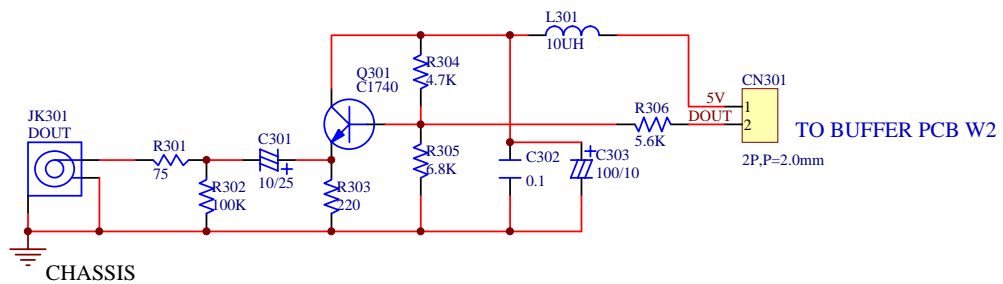




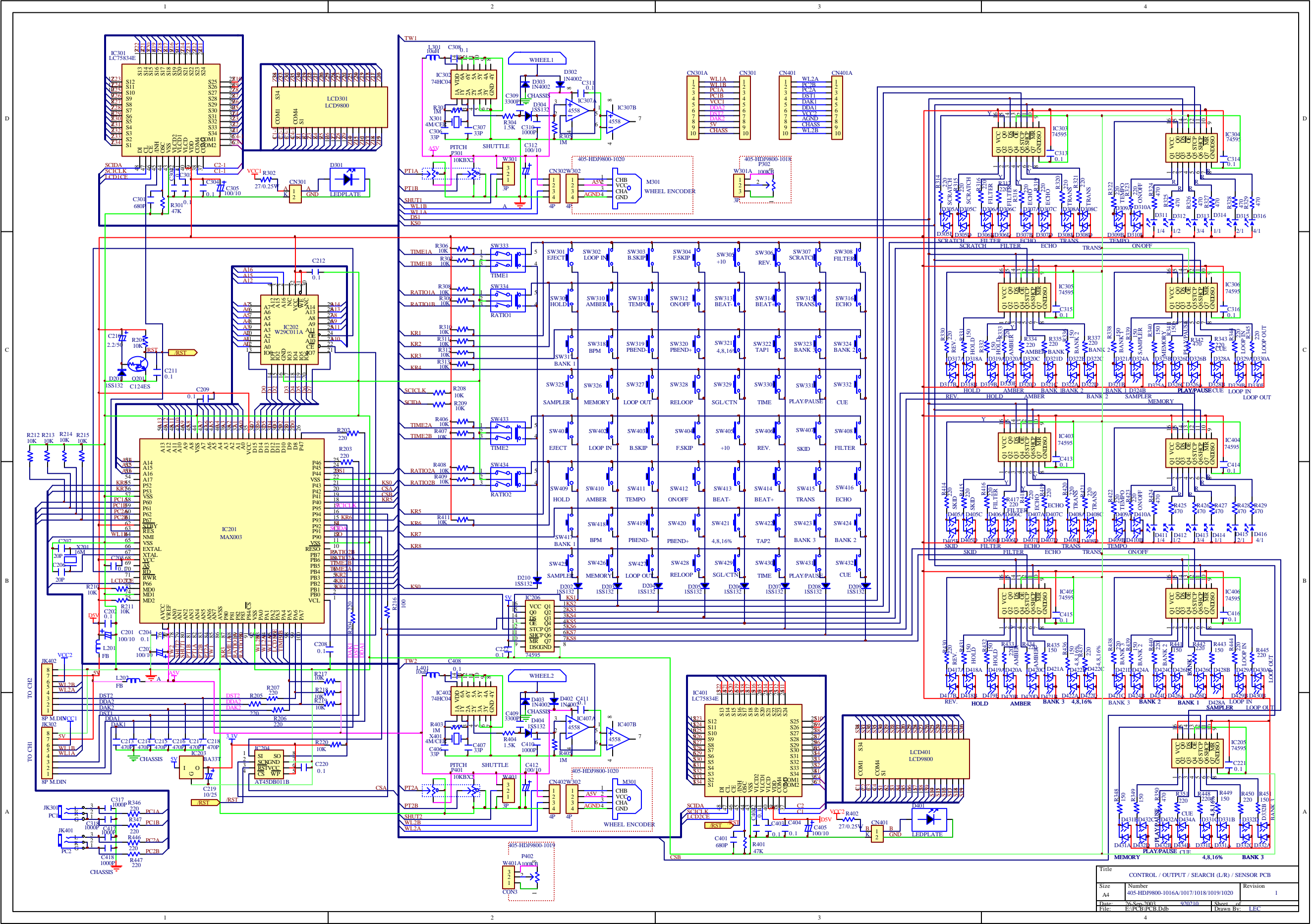




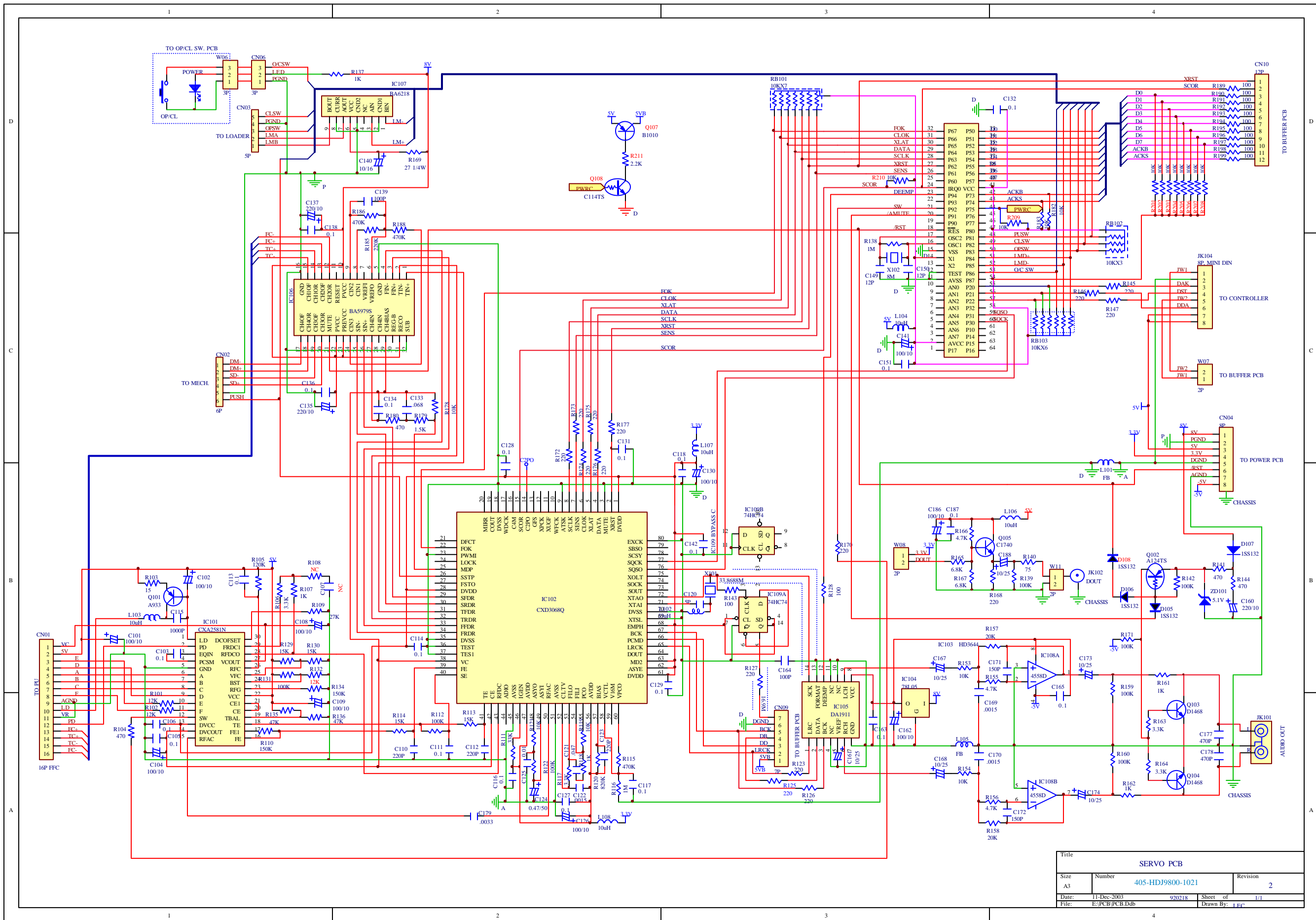
Title			POWER PCB		
Size	Number	Revision			
A3	405-HDJ9800-1224	1			
Date:	6-Jan-2004	920521	Sheet of		
File:	E:\PCB\PCB.Ddb	Drawn By:			



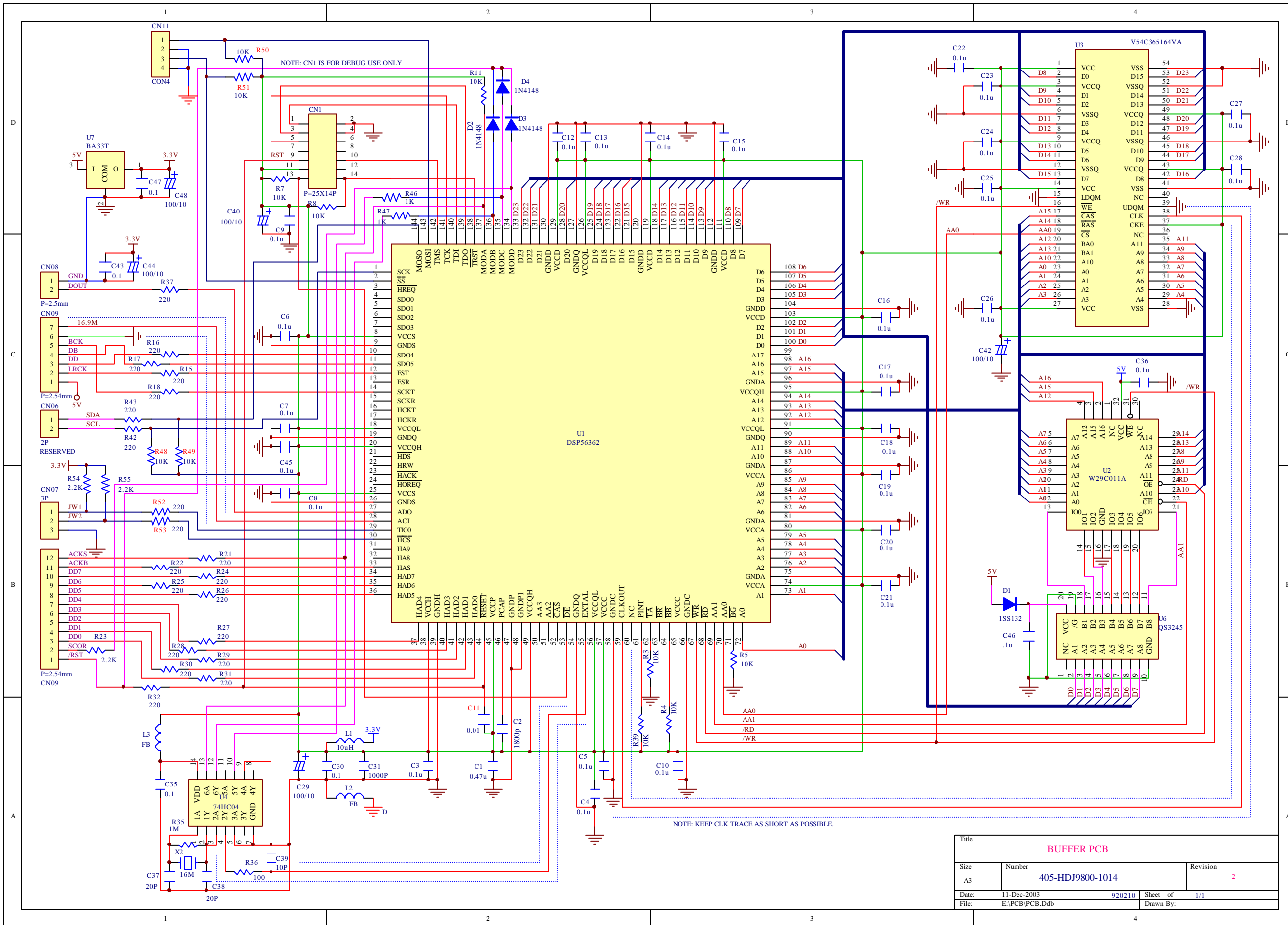
APPROVED		CHECKED		DRAWING	
Title					
ANTI SHOCK DIGITAL OUT PCB					
Size	Number	Revision			
A4	405-HDJ2650-649A	1			
Date:	23-Jan-2002	Sheet of			
File:	C:\My Documents\MyDesign\MyDesign.d\Drawn By:				



Title	CONTROL / OUTPUT / SEARCH (L/R) / SENSOR PCB	
Size	Number	Revision
A4	405-HD#9800-1016A/1017/1018/1019/1020	1
Date	76 Sep 2003	1
File	BU PCB (L/R) B.Dwg	Drawn By: LEC

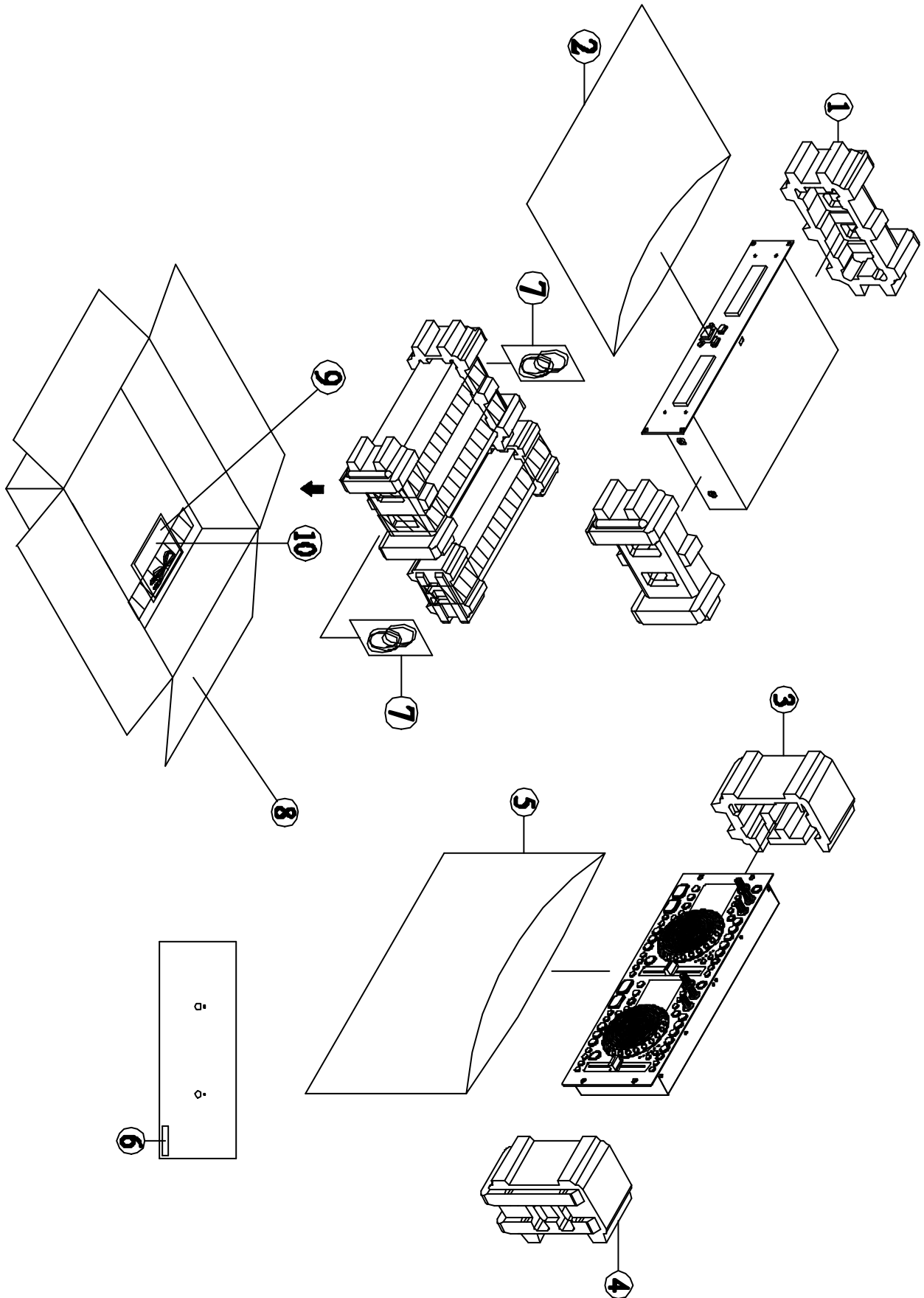


Title		
SERVO PCB		
Size	Number	Revision
A3	405-HDJ9800-1021	2
Date:	11-Dec-2003	920218
File:	E:\PCB\PCB.Ddb	Sheet of 1/1
		Drawn By: LFC



Title		
BUFFER PCB		
Size	Number	Revision
A3	405-HDJ9800-1014	2
Date:	11-Dec-2003	920210 Sheet of 1/1
File:	E:\PCB\PCB.Ddb	Drawn By:

PACKAGE VIEW



HDJ-9800B

1=10.5

PACKAGE VIEW PART LIST

REF. NO.	DESCRIPTION	PART NO.	Q' TY	REMARK
1	POLYFOAM FOR UNIT	506-HDJ9700-337	2	
2	SOFT SHEET FOR UNIT	509-HDJ9700-128	1	
3	POLYFOAM L FOR CONTROLLER	506-HDJ9800-347L	1	
4	POLYFOAM L FOR CONTROLLER	506-HDJ9800-347R	1	
5	SOFT SHEET FOR CONTRILLER	509-HDJ9700-127	1	
6	SERIES NO. LABEL	501-DV300-1067		
7	8P CABLE RIGHTANGLE(L=3000mm)	404-HDJ7000-005	2	
8	GIFT BOX	507-9800B-2326	1	
9	I/B ASS' Y	701-9800B-3129	1	
10	AC POWER CORD(L=1900+-50mm,UL)	409-PS2-106	1	
	AC POWER CORD(L=1900+-50mm,VDE)	409-PS2-099	1	