

SERVICE MANUAL

MX-1400 DSP

MODEL NO.: MX-1400 DSP

Contents

<i>Specification</i>	1-2
<i>Block Diagram</i>	3
<i>Packing View</i>	4
<i>Packing View Part List</i>	5
<i>Point To Point Wiring Diagram</i>	6
<i>Exploded View</i>	7
<i>Exploded View Part List</i>	8-9
<i>Electrical Part List</i>	10-24
<i>Schematic Diagram</i>	25-30
<i>Printed Circuit Board Diagram</i>	31-39
<i>IC Block Diagram</i>	40-57
<i>Trouble Shooting</i>	58

General Specification

1. APPLICATION: Model MX-D1400B
2. POWER: AC 115/230V, 50/60Hz, 33Watts.
3. DIMENSIONS: 320(W) x 357(D) x 106(H)mm
4. WEIGHT: 6.3 kgs
5. FEATURES:
 1. Feather Fader Plus for Q-Start Control.
 2. 3 Phono, 4 Line, 4 Auxiliaries & 3 Mic Inputs.
 3. Balanced outputs.
 4. High quality Feather Fader™ for smooth, clean cross fades (replaceable).
 5. Bass, Mid, and Treble for each channel.
 6. 2 Independent Microphones with Separate EQ with combo connection (1/4" /XLR) .
 7. BOOTH Output with Bass and Treble Control.
 8. Mono/Stereo Switch on Master.
 9. High level headphone output.
 10. Cue mixing.
 11. Split cue for headphones.
 12. Talk Over Switch - Reduces channel output Gain by 14dB +/- 2 dB.
 13. Three turntable ground connectors.
 14. Pre Fader Levels (PFL) for each channel.
 15. A/B crossfader assign for each channel.
 16. Gain control for each channel.
 17. Q-Start Compatible (for use with American Audio CD Players with Fader "Q" Start).
 18. Master Level Indicator.
 19. Master Output Pan Control.
 20. DSP Effects – Echo, Auto Pan, Flanger, Manual Filter, Auto Filter, Reverb, Trans, Pitch Shifter.
 21. Digital BPM Display.
6. INPUT/OUTPUT IMPEDANCE & SENSITIVITY: (EQ FLAT, MAXIMUM GAIN, FX OFF, LOAD=100K OHM)
 - 6-1. INPUT IMPEDANCE AND REFERENCE LEVEL:

LINE:	20K OHM /-14dBV +/-0.1dB (200mV)
AUX:	47K OHM /-14dBV +/-0.1dB (200mV)
PHONO:	47K OHM /-54dBV +/-0.1dB (2mV)
MIC:	10K OHM /-54dBV +/-0.1dB (2mV)
 - 6-2. OUTPUT IMPEDANCE AND LEVEL:

REC:	1K OHM /-10dBV (316mV) +/-2dB
MASTER UNBAL.:	1K OHM /0dB (1V) +/-2dB
MASTER XLR (load=600 ohm):	600 OHM /+4dBm (1.23V) +/-2dB
BOOTH (load=600 ohm):	600 OHM /+4dBm (1.23V) +/-2dB
PHONES (load=32 ohm)	33 OHM /0dBV (1V) +/-2dB (CUE MIXING AT CENTER)
DIGITAL OUT (load=75 ohm):	75 OHM /-16dBfs +/-2dB, 0.5 +/-0.1V P-P.
7. FREQUENCY RESPONSE: (EQ FLAT, MAXIMUM GAIN, FX OFF)

LINE, AUX:	20 - 20K Hz +/-2dB
PHONO:	20 - 20K Hz +2/-3dB (RIAA)
MIC:	20 - 20K Hz +2/-3dB
8. THD + N: (EQ FLAT, MAXIMUM GAIN, FX OFF, W/ 20kHz LPF)

LINE, AUX:	LESS THAN 0.04% 20 - 20KHz
PHONO:	LESS THAN 0.15% @ 1KHz (A-WEIGHTED)
MIC:	LESS THAN 0.15% @ 1KHz (A-WEIGHTED)

General Specification

9. MAXIMUM INPUT: (1KHz, MASTER OUTPUT, THD=1%, EQ FLAT, FX OFF, MAXIMUM GAIN)

LINE, AUX: MORE THAN +4dBV
PHONO: MORE THAN -36dBV
MIC: MORE THAN -36dBV

10. MAXIMUM OUTPUT: (EQ FLAT, MAXIMUM GAIN, FX OFF, THD=1%)

MASTER: MORE THAN +18dBV (8.0V)
REC MORE THAN +8dBV (2.5V)
PHONES: MORE THAN +3dBV (1.4V) LOAD=32 OHM

11. S/N RATIO: (MAXIMUM GAIN, EQ FLAT, W/20KHz LPF, A-WEIGHTED, FX OFF)

LINE, AUX: MORE THAN 80dB
PHONO: MORE THAN 66dB
MIC: MORE THAN 64dB

12. CROSSTALK: (MAXIMUM GAIN, EQ FLAT, FX OFF, MASTER OUTPUT, W/20KHz LPF, A-WEIGHTED)

LINE, AUX, PHONO: MORE THAN 65dB @ 1KHz BETWEEN L AND R CHANNEL
MORE THAN 70dB @ 1KHz BETWEEN CHANNELS

13. EQ:

MIC: 12 +/-2dB, -12 +/-2dB AT 70Hz
12 +/-2dB, -12 +/-2dB AT 1KHz
12 +/-2dB, -12 +/-2dB AT 13KHz

CHANNEL: 12 +/-2dB, BELOW -30dB AT 70Hz
12 +/-2dB, BELOW -30dB AT 1KHz
12 +/-2dB, BELOW -30dB AT 13KHz

14. CHANNEL BALANCE: Within 3dB

15. FADER KILL: MORE THAN 80dB AT 1KHz FOR CHANNEL FADER AND CROSSFADER

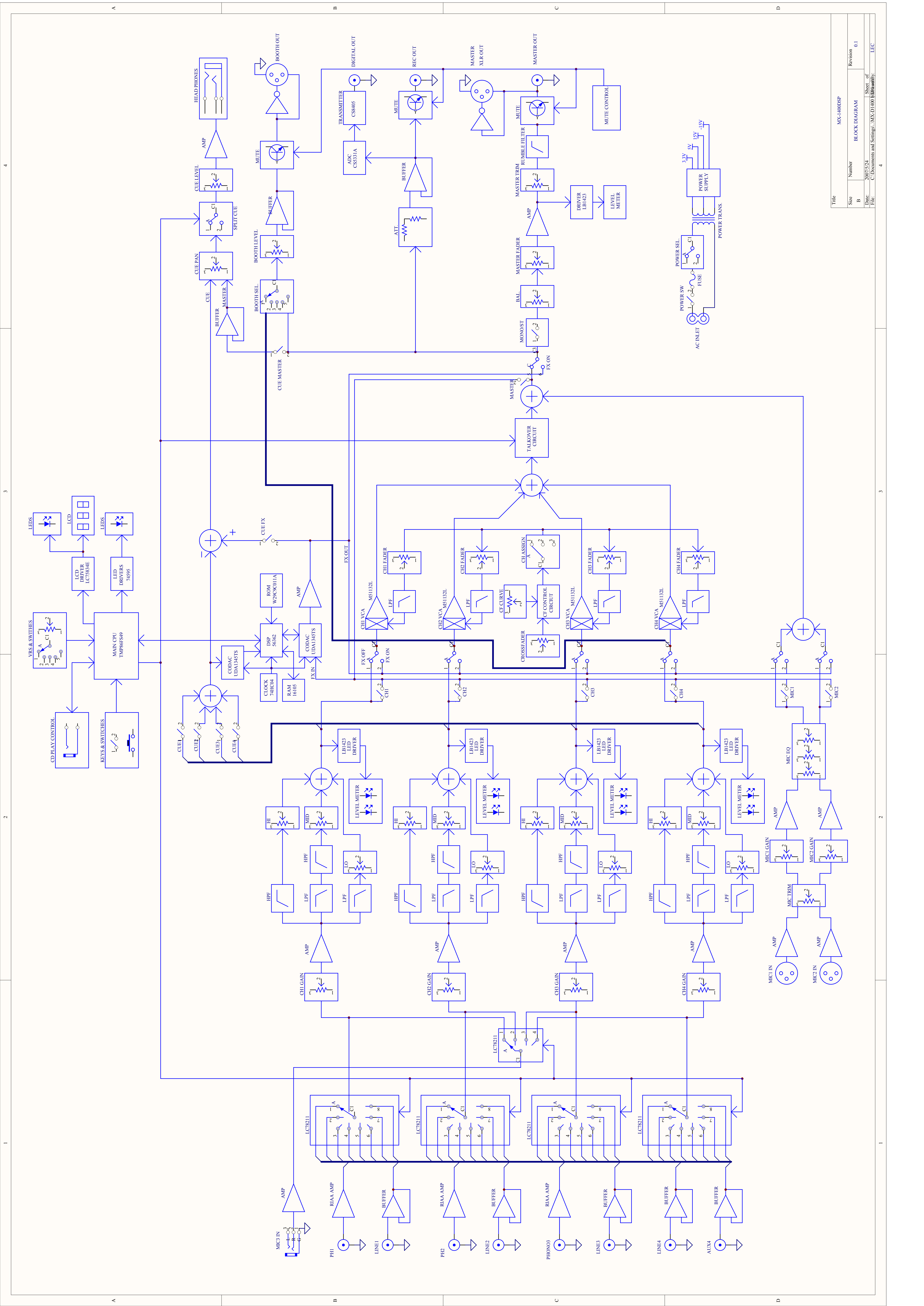
16. MIC TALKOVER: -14 +/-2dB

17. ACCESSORIES

- (1) AC power cord 1 pc
- (2) Operating instruction 1 pc

18. NOTES

- (1) The specifications are subject to change to any improvement by negotiations in advance.
- (2) The parts are subject to change to any improvement within the range of the specification



A

B

C

D

1

2

3

4

A

B

C

D

1

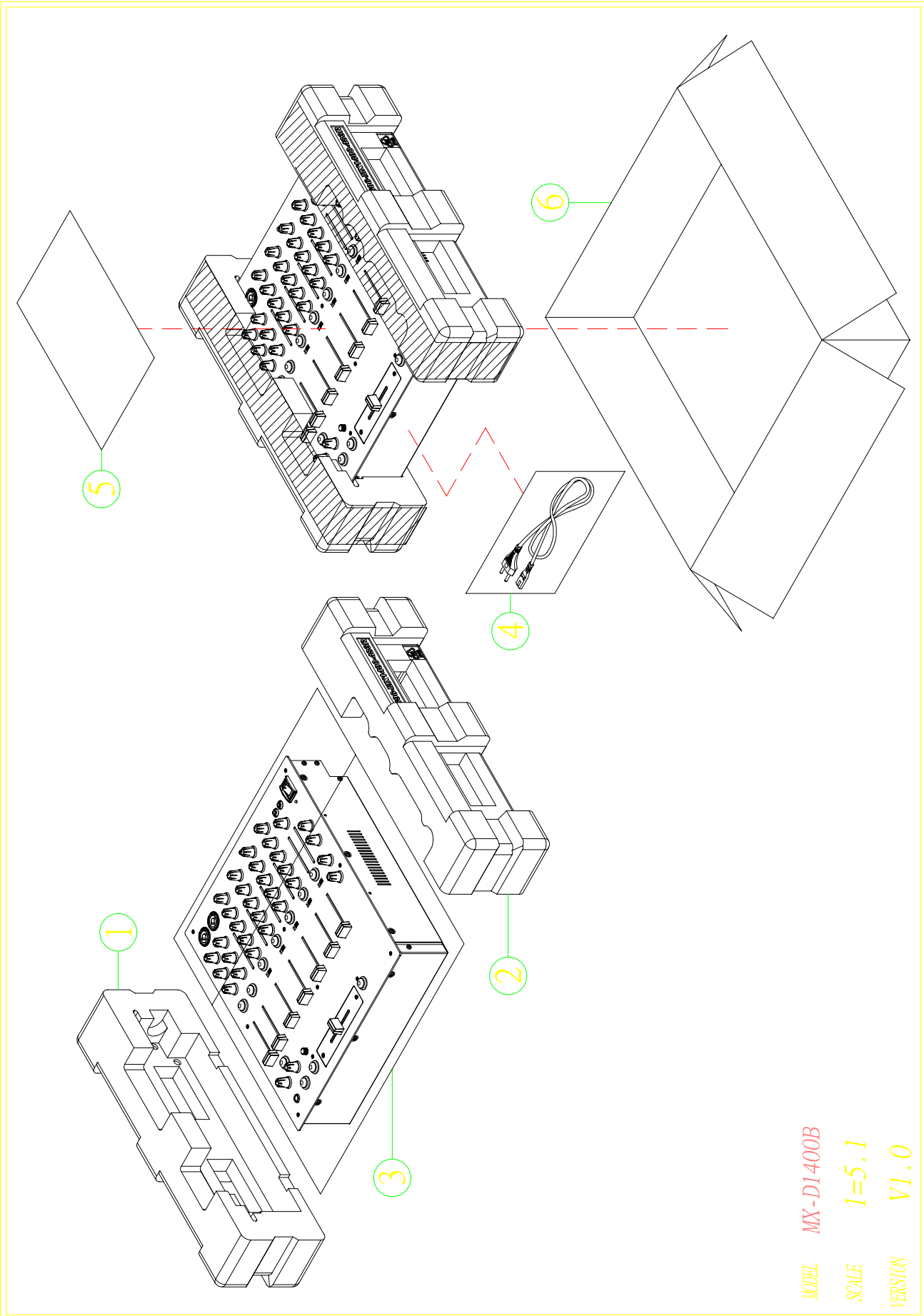
2

3

4

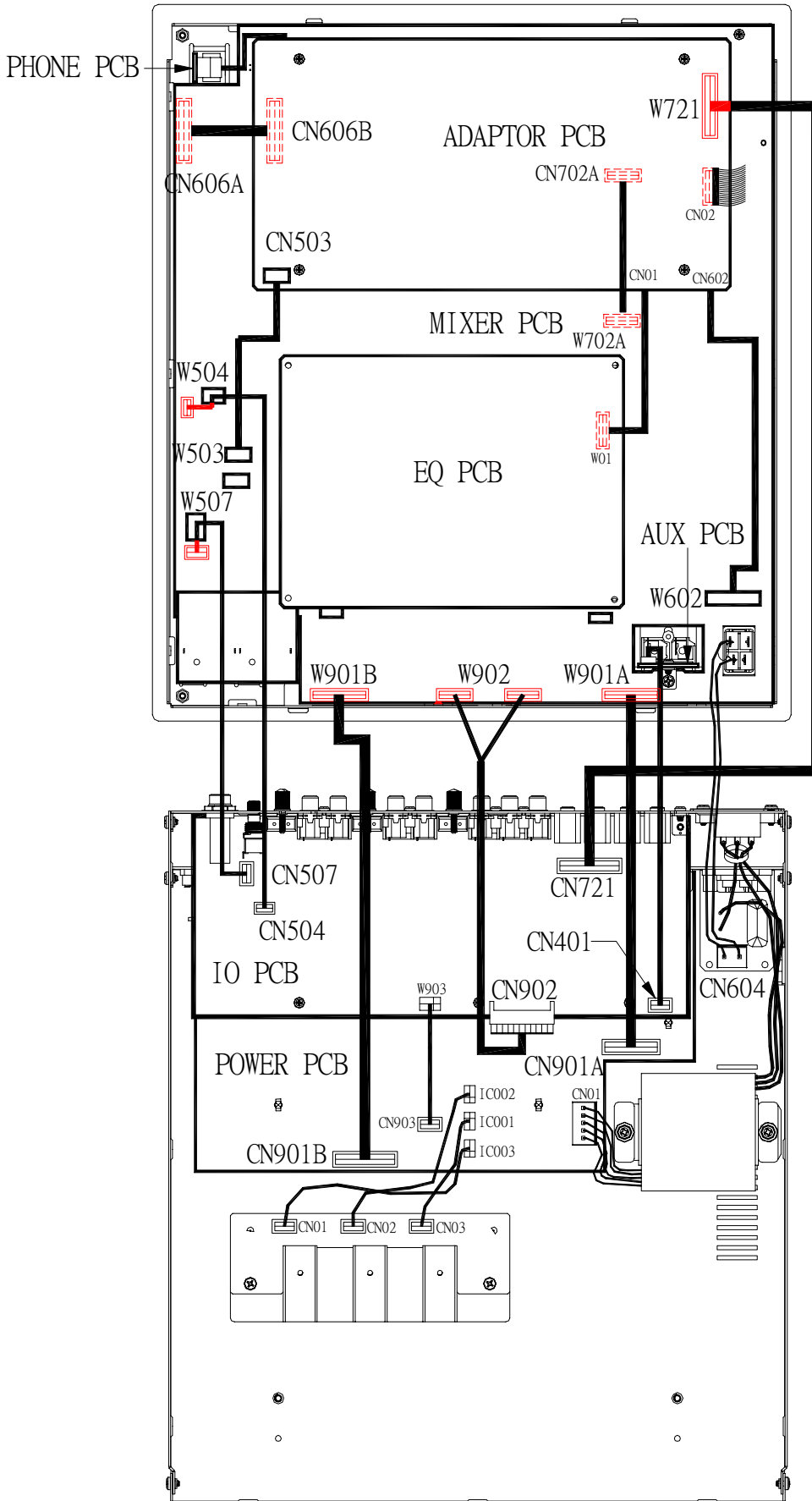
Title	MX-1400DSP		
Size	Number	BLOCK DIAGRAM	Revision
B	2007/5/24	Sheet of	0.1
Date	C:\Documents and Settings\WX-DI400\My Documents\...		
File	LFC		

Packing View

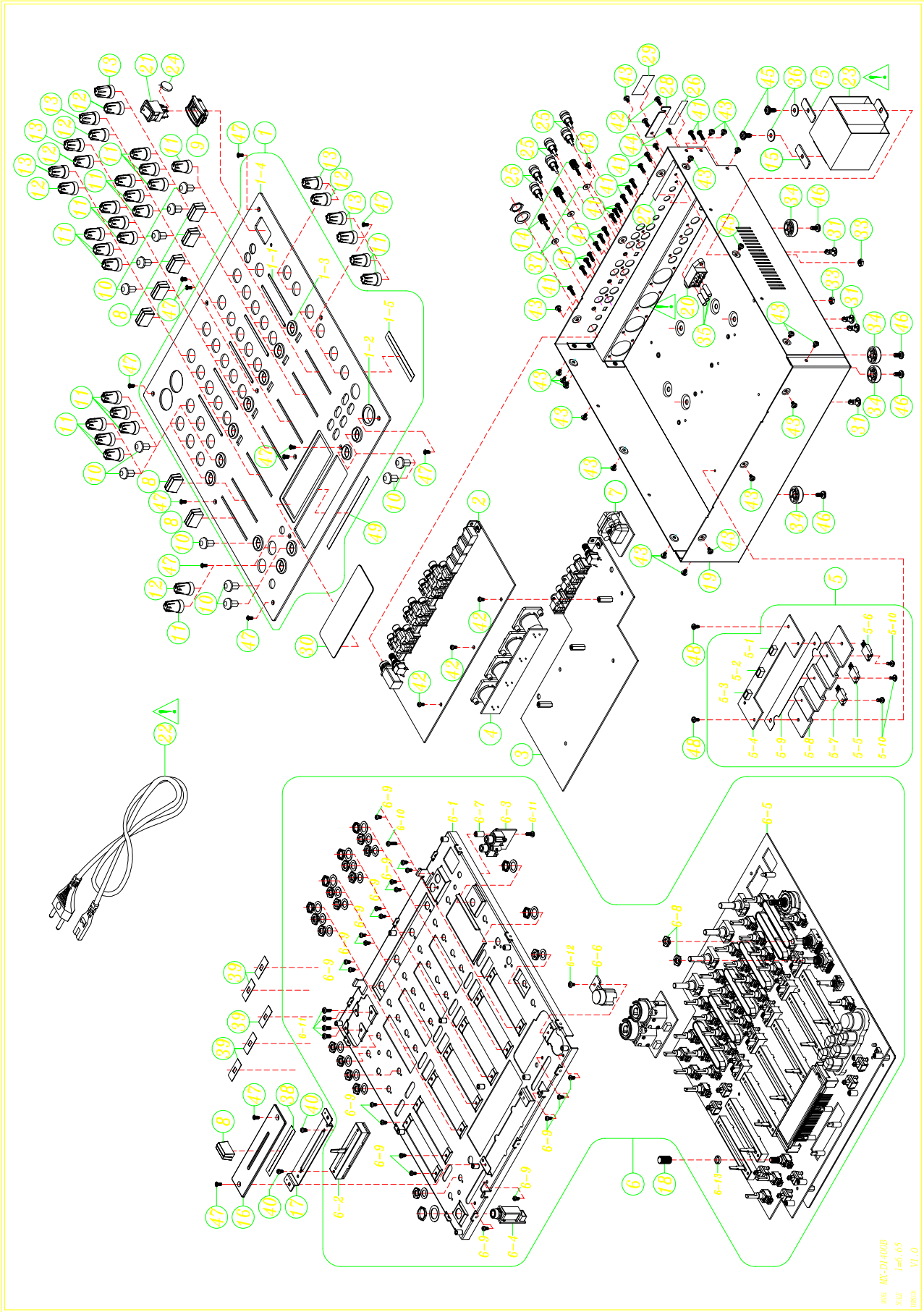


MODEL **MX-DI400B**
SCALE **1=5.1**
VERSION **V1.0**

Point to Point Wiring Diagram



Exploded View



REV: MK-D1400B
 SIZE: 1-6, 65
 1000000 V1.0

Exploded View Part List

REF NO.	DESCRIPTION	PART NO.	Q'TY	REMARK
1	FRONT PANEL ASS'Y	703-MXD1400-1102	1	
1-1	THROW BOARD	100-Q3433-2209	6	
1-2	KNOB FRAME	100-MX1400-2223	1	
1-3	PROJECTION RING	100-QFX-2430	12	
1-4	FRONT PANEL	300-1400DSP-1433A	1	
1-5	HIMILON	612-HDJ100-045	7	
2	IO PCB ASS'Y	704-1400DSP-6630	1	
3	POWER PCB ASS'Y	704-1400DSP-6937	1	
4	JACK PCB ASS'Y	704-1400DSP-6638	1	
5	IC PCB ASS'Y	704-1400DSP-6904	1	
5-1	3P SOCKET(P=2.5mm,RED)	404-HT8015-328	1	
5-2	3P SOCKET(P=2.5mm,BLUE)	404-HT8015-329	1	
5-3	3P SOCKET(B3B-XH-A,P=2.5mm,180DEGREE)	404-HV3500K-623A	1	
5-4	IC PCB(BARE,94V0,140*121.5*1.6t)	405-MACH2-1880	1	
5-5	IC(NJM-7815FA,TO-220F)	417-DV330-216	1	
5-6	IC(NJM-7915FA,TO-220F)	417-RCC955A-291	1	
5-7	IC(BA05T,TO-220FP)	417-CDN34A-314	1	
5-8	HEAT SINK	425-M2-095	1	
5-9	ISOLATION(PC,140*16.5*0.3t)	501-M2-1984	1	
5-10	SCREW(SAE1018,BTB, ϕ 3*L8)	602-HP1010K-175	3	
6	FRONT BOARD & MIXER ASS'Y	704-1400DSP-6917	1	
6-1	FRONT BOARD ASS'Y	703-MX1400-1103	1	
6-2	CROSS FADER PCB ASS'Y	704-D40-5287	1	
6-3	AUX PCB ASS'Y	704-1400DSP-6637	1	
6-4	PHONE PCB ASS'Y	704-1400DSP-6640	1	
6-5	MIXER/TRANSFER/EQ/MIC/LED PCB ASS'Y	704-1400DSP-6903	1	
6-6	KNOB	100-RMX40-2222	1	
6-7	SLEEVE(ϕ 6*10.2L)	200-HPR1-331	1	
6-8	NUT	200-MX1400-530	2	
6-9	SCREW(3*5 P=0.5)	602-B300-041	20	
6-10	SCREW(SAE1018,PTP,M3*10)	602-MK7-131	1	
6-11	SCREW(SAE1018,ISOB, ϕ 3*L8*P0.5)	602-HP1010K-178	5	
6-12	SCREW(SAE1018,BTB, ϕ 3*L5)	602-QMX2BPM-322	1	
6-13	WASHER	606-SMX2-225	1	
7	AC JACK ASS'Y	704-1400B-6936	1	
8	PUSH KNOB	100-QFX-1736A	8	
9	JACKET FOR SW(PLASTICS MOLD)	100-HPR1-2069	1	
10	PUSH KNOB	100-QFX-2431	12	
11	ROTATE KNOB	100-1400DSP-2441	22	
12	ROTATE KNOB	100-MX1400-2441	6	
13	JOG TUNING KNOB	100-QFX-2442	7	
14	GROUND PIN	200-DJ100-231	3	
15	BRACKET TRANSFORMER	300-DV300B-443	2	

Mixer/Adaptor/Eq/Mic/Led PCB Ass'y Part List

REF NO.	DESCRIPTION	PART NO.	Q'TY	REMARK
	MIXER/ADAPTOR/EQ/MIC/LED PCB ASS'Y	704-1400DSP-6903	1	
	VR SHEATH	300-SCX2-1125	1	
	SCREW(3*5 P=0.5)	602-B300-041	8	
	WASHER	606-SMX2-225	1	
	VFD WASHER	612-HV3700K-059	1	
	EQ PCB ASS'Y	704-1400DSP-6631	1	
W01	9P 2.0 CONNECTOR WIRE(L=80mm,+/-,UL1007#26 TS WHITE*8 RED)	404-1400-2600	1	
CN102A,CN202A,CN302A,CN402A	12P FFC SOCKET	404-4001-2235	4	
CN101,CN201	4P SOCKET(S4B-PH-K,P=2mm,JST,90 DEGREE)	404-DCM270E3-878	2	
CN301,CN401	3P SOCKET(S3B-PH-K,P=2mm,JST,90 DEGREE)	404-HMD5000-784	2	
C135,C136,C157,C158,C161,C162,C235,C236,C257,C258,C261,C262,C335,C336,C357,C358,C361,C362,C435,C436,C457,C458,C461,C462	POLYESTER CAPACITOR(0.01uF/50V,J,TAPING)	413-3113-057	24	
C442,C443,C444,C141,C142,C143,C144,C241,C242,C243,C244,C341,C342,C343,C344,C441	POLYESTER CAPACITOR(0.0022uF/50V,J,TAPING)	413-3113-059	16	
C137,C138,C237,C238,C337,C338,C437,C438	POLYESTER ACPACITOR(0.056uF/50V,J,TAPING)	413-HT8015-168	8	
C149,C150,C151,C152,C249,C250,C251,C252,C349,C350,C351,C352,C449,C450,C451,C452	POLYESTER CAPACITOR(0.022uF/50V,J,TAPING)	413-KT300-101	16	
C155,C156,C163,C164,C255,C256,C263,C264,C355,C356,C363,C364,C455,C456,C463,C464	POLYESTER CAPACITOR(0.1uF/100V,J,TAPING)	413-KT350-089	16	
C145,C146,C245,C246,C345,C346,C445,C446	POLYESTER CAPACITOR(0.001uF/100V,J,TAPING)	413-PMSE1-279	8	
C127,C128,C175,C227,C228,C275,C327,C328,C375,C427,C428,C475	ELEC. CAPACITOR(1uF/50V,M,105°C,TAPING 4*7,MINI)(Cd,Pb,Hg,Cr)	413-SPPW3-234	12	
C173,C174,C273,C274,C373,C374,C473,C474	ELEC. CAPACITOR(22uF/16V,M,105°C,TAPING 4*7,MINI)(Cd,Pb,Hg,C	413-SPPW3-236	8	
C147,C148,C247,C248,C347,C348,C447,C448	POLYESTER CAPACITO(0.0056uF/100V,J,TAPING)	413-SPPW3-299	8	
R173,R273,R373,R473	CARBON FILM RESISTOR(22K OHM,1/6W,J,T-26)	412-3113-059	4	
R144,R244,R344,R444	CARBON FILM RESISTOR(4.3K OHM,1/6W,J,T-26)	412-HC1421FR-245	4	
R127,R227,R327,R427	CARBON FILM RESISTOR(5.1K OHM,1/6W,J,T-26)	412-KM281-294	4	
	EQ PCB	405-1400DSP-1864	1	
R128,R228,R328,R428	CHIP RESISTOR(5.1K OHM,1/10W,0603,J,TP ,50V)	412-007USB-673	4	
R133,R134,R233,R234,R333,R334,R433,R434	CHIP RESISTOR(27K OHM,1/10W, 0603,J,TP ,50V)	412-007USB-675	8	

Mixer/Adaptor/Eq/Mic/Led PCB Ass'y Part List

REF NO.	DESCRIPTION	PART NO.	Q'TY	REMARK
R145,R245,R345,R445	CHIP RESISTOR(18K OHM,1/10W, 0603,J,TP,50V)	412-007USB-703	4	
R174,R274,R374,R474	CHIP RESISTOR(22K OHM,1/10W,0603,J,TP ,50V)	412-007USB-704	4	
R237,R337,R437,R137	CHIP RESISTOR(4.3K OHM,1/8W,J,TP 1206,50V)	412-100-899	4	
R135,R136,R235,R236,R335,R336,R435,R436	CHIP RESISTOR(27Kohm,TP 1206 150V)	412-1400-1214	8	
R139,R140,R239,R240,R339,R340,R439,R440	CHIP RESISTOR(43Kohm,TP 1206 150V)	412-1400-1215	8	
R341,R342,R441,R442,R141,R142,R241,R242	CHIP RESISTOR(8.2Kohm,TP 1206 150V)	412-1400-1216	8	
R146,R147,R148,R246,R247,R248,R346,R347,R348,R447,R448,R446	CHIP RESISTOR(18Kohm,TP 1206 150V)	412-1400-1217	12	
R151,R152,R251,R252,R351,R352,R451,R452	CHIP RESISTOR(62Kohm,TP 1206 50V)	412-1400-1218	8	
R153,R154,R253,R254,R353,R354,R453,R454	CHIP RESISTOR(12Kohm ,TP 1206 150V)	412-1400-1219	8	
R149,R249,R349,R449	CHIP RESISTOR(6.2Kohm,TP 1206 150V)	412-1400-1220	4	
R131,R132,R150,R231,R232,R250,R331,R332,R350,R431,R432,R450	CHIP RESISTOR(6.2KOHM,1/10W,F,TP 0603,50V)	412-900-984	12	
R125,R126,R225,R226,R325,R326,R425,R426	CHIP RESISTOR(100K OHM,1/10W,0603 ,J,TP ,50V)	412-CDVD2001-537	8	
R138,R143,R238,R243,R338,R343,R438,R443	CHIP RESISTOR(4.3K OHM,1/10W,0603,J,TP ,50V)	412-DCM280-722	8	
R129,R130,R171,R172,R229,R230,R271,R272,R329,R330,R371,R372,R429,R430,R471,R472	CHIP RRESISTOR(20K OHM,1/10W,0603,J,TP ,50V)	412-DCM280-726	16	
C171,C172,C271,C272,C371,C372,C471,C472	CHIP CAPACITOR(39pF/50V,J,NPO,0603)	413-390-987	8	
C129,C130,C229,C230,C329,C330,C429,C430	CHIP CAPACITOR(68pF/50V,J,0603 TYPE,NPO)	413-DCM280-766	8	
C123,C124,C125,C126,C131,C132,C159,C160,C223,C224,C225,C231,C232,C259,C260,C323,C324,C325,C326,C331,C332,C359,C360,C423,C424,C425,C426,C431,C432,C459,C460,C226	CHIP CAPACITOR(0.1uF/50V,Z,0603 TYPE,Y5V)	413-DCM280-773	32	
IC105,IC106,IC205,IC206,IC305,IC306,IC405,IC406	IC(NJM-2060V-TE1,SMD)	417-PRO1000-502	8	
IC104,IC107,IC204,IC207,IC304,IC307,IC404,IC407	IC(BA15218F/BA15218FE2,SOP-8)	417-QMX2-167	8	
	MIXER PCB ASS'Y	704-1400DSP-6632	1	
	SLEEVE(⌀ 6*10.2L)	200-HPR1-331	5	

Mixer/Adaptor/Eq/Mic/Led PCB Ass'y Part List

REF NO.	DESCRIPTION	PART NO.	Q'TY	REMARK
	FIXED PLATE FOR BACKLIGHT(0.5t)	300-SMX701-844	2	
SW727	ROTARY SW(SR1712F-0107-25K0A-N9-N)	403-1400DSP-282	1	
SW733,SW734,SW735,S W736,SW737,SW746	TSSW-LED(YELLOW)	403-810-225	6	
SW740,SW728,SW729,S W730,SW731,SW732,SW7 43,SW744,SW738,SW739, SW742,SW741	PUSH SW(SPEA12MC05-HF)	403-AK4-196	12	
SW748,SW745	TACT SW(H=5mm,TAPING)	403-DCM270X-101A	2	
SW501	SLIDE SW(SKA-22-09)	403-DRM120-154	1	
SW101,SW201,SW301,SW401	SLIDE SW(SKA-23-09,8PIN)	403-QD3-141	4	
SW601	ENCODE	403-QFXP-277	1	
SW726	ROTARY SW(SR1712-0108-25K0A-N9-N)	403-RMX40DSP-206	1	
SW721,SW722,SW723,SW724	BAND SWITCH(SR1712F-0109-25K0A-N9-N)	403-SX2-257	4	
SW747	ENCODER(RE111F-41B3-235F-20P,L=23.5)	403-SX2-265	1	
W605	4P 2.5 CONNECTOR WIRE(L=80mm,+/-,UL2468#26*4C TC BLACK&WHITE)	404-1400-2591	1	
W602	11P 2.0 CONNECTOR WIRE(L=180mm,+/-,UL2468#26*11C TC BLACK&W	404-1400-2592	1	
W901A	10P 2.5 CONNECTOR WIRE(L=210mm)	1 404-1400-2593	1	
W902	6P+6P 2.5 CONNECTOR WIRE(L=160mm,+/-)	404-1400-2594	1	
W503	3P 2.5 CONNECTOR WIRE(L=150mm,+/-,UL2468#26*3C TC BLACK&WHIT	404-1400-2595	1	
W504	3P 2.0 CONNECTOR WIRE(L=210mm,+/-,UL2547#26*2C TS GRAY)	404-1400-2596	1	
W301,W401	3P 2.0 CONNECTOR WIRE(L=70mm,+/-,UL2468#26*3C TC BLACK&WHITE)	404-1400-2598	2	
W101,W201	4P 2.0 CONNECTOR WIRE(L=70mm,+/-,UL2468#26*4C TC BLACK&WHITE)	404-1400-2599	2	
W507	3P 2.5 CONNECTOR WIRE(L=150mm,+/-,UL2547#28*2C TS GRAY)	404-1400-2601	1	
W901B	12P 2.5 CONNECTOR WIRE(L=250mm,+/-,UL2468#26*6C*2 TC BLACK&W	404-1400-2609	1	
CN701A	23P FFC JACK	404-1400DSP-2437	1	
D742	2P 2.5 CONNECTOR WIRE(L=80mm,UL1007#26 TS RED&WHITE)	404-1400DSP-2593	1	
CN606A	15P FFC CONNECTOR	404-300-1915	1	
CN702A	SOCKET(13P FFC)	404-385-2086	1	
CN102,CN202,CN302,CN402	12P FFC SOCKET	404-4001-2235	4	
W02	4P 2.5 CONNECTOR WIRE(L=150mm,AWM2468,AWG26,WHITE/BLACK*3,+)	404-DAIA-1962	1	
W901A	10P 2.5CONNECTOR WIER(L=200mm,UL2468#26)	404-HPR1-1715	1	
CN721	2P 2.5SOCKET(S2B-XH-A,90°,JST)	404-KMD1500-607	1	
CN102,CN202,CN302,CN402	12P 1.0 FFC WIRE(L=160mm)	406-1400-915	4	
W501,W502	3P 2.5 WIRE(L=40mm,UL2468#26*3C TC BLACK&WHITE)	406-1400-916	2	
CN606A	15P 1.0 FFC CABLE(L=55mm,+/-)	406-1400DSP-912	1	
CN701A	23P 1.0 FFC CABLE(L=65mm,+/-)	406-1400DSP-913	1	
CN702A	13P 1.0 FFC CABLE(L=140mm,+/-)	406-1400DSP-914	1	
W2A	1P WIRE(L=300mm,AWM1007,AWG22,BLACK)	406-D1400-917	1	
W1A	1P WIRE(L=300mm,AWM1007,AWG22,BROWN)	406-D1400-918	1	
D737,D737A,D731,D731A, D732,D732A,D733,D733A, D734,D734A,D735,D735A, D736	LED (6224-10ID-A,RED)	410-CD6000-122	13	
D729,D729A,D730,D730A	LED (YELLOW)	410-CD6000-123	4	

Mixer/Adaptor/Eq/Mic/Led PCB Ass'y Part List

REF NO.	DESCRIPTION	PART NO.	Q'TY	REMARK
D740A,D740	LED (GREEN)	410-CD6000-124	2	
D743,D745	INFRARED EMITTING MODULE(LTE-302-M)	410-CDMIX1-147	2	
D742	BACKLIGHT(BLUE,111.6*28.5mm,BCS-004353BNT)	410-DRM120-182A	1	
D741,D741A,D738,D738A,D739,D739A	LED (LTL-16KA)	410-HDJ2650-163	6	
LCD721	LCD(UTS-H333ENV-2W)	410-HPR1A-254	1	
D727	LED (LTL42UB5N,BLUE)	410-NT2000-149	1	
C740	ELEC. CAPACITOR(100uF/10V,M,105°C,TAPING 5*7,MINI)(Cd,Pb,Hg,	413-HMA2200-5017	1	
C277,C177,C377,C477,C609,C610	ELEC. CAPACITOR(4.7uF/50V,M,105°C,TAPING 4*7,MINI)(Cd,Pb,Hg,	413-HT801K-191	6	
C605,C606	ELEC. CAPACITOR(1uF/50V,M,105°C,TAPING 4*7,MINI)(Cd,Pb,Hg,Cr	413-SPPW3-234	2	
C178,C278,C378,C478,C611,C612	ELEC. CAPACITOR(10uF/25V,M,105°C,TAPING 4*7,MINI)(Cd,Pb,Hg,C	413-SPPW3-235	6	
D744,D746	PHOTO TRANSISTOR(LTR-301)	416-DCM270X-120	2	
IC108,IC109,IC208,IC209,IC308,IC309,IC408,IC409,IC603,IC604,IC605,IC606	IC(LB1423N,SIP-9)	417-RMX40DSP-694	12	
VR606	ROTARY VR(RD902F-40-15K-B50K-00DJ8)	418-1400-389	1	
VR602	SLIDE VR(20KB(3B),RA6030F-21-20D1-JISB20K-0014)	418-1400-391	1	
VR105,VR205,VR305,VR405	SLIDE VR(50KB(3B),RA6020F-21-20D1-JISB50K-0027)	418-1400-392	4	
VR501,VR502	SLIDE VR(20KB(3B),RA6020F-21-20D1-JISB20K-0027)	418-1400-393	2	
VR605,VR604,VR603	ROTARY VR(50KB*2,RD902-40-20,L=7)	418-202-310	3	
VR503,VR504,VR505,VR506,VR507,VR508	ROTARY VR(50KB,RD901-40-20,L=7)	418-202-315	6	
VR101,VR201,VR301,VR401	ROTARY VR(20KB*2,RD902-40-20,L=7)	418-202-316	4	
SW102,SW103,SW104,SW202,SW203,SW204,SW302,SW303,SW304,SW402,SW403,SW404	VR(20KB*2,RD902F-40-20F-B20K-0CDH2)	418-K9000-298	12	
VR601	VR(50KMN*2,RD902F-40-20F-MN50K-0CDH2)	418-K9000-301	1	
VR721	VR(10KB,RD901F-40-20F-B10K-00DH2)	418-K9000-304	1	
	LABLE(BLACK,28*8mm,t=2.6mm)	501-R1A-1731	1	
	LABLE (BACK,28*11mm,t=2.6mm)	501-R1A-1732	1	
D729,D729A,D730,D730A,D737,D737A,D738,D738A,D739,D739A,D740,D740A,D731,D731A,D732,D732A,D733,D733A,D734,D734A,D735,D735A,D741,D741A	LED HOLDER(LED-4.5A,H=4.5mm,WHITE)	504-BJ2300-039	24	
D744,D745,D743,D746	LED HOLDER(LED-10.6,H=10.7mm,WHITE)	504-CDMIX1-059	4	
D727	LED HOLDER(LED3-17)	504-DD4250A-100	1	
	SPACER SUPPORT (H-15-N66,WHITE NYLON66(UL),H=15mm)	504-QFX-204	8	
	SCREW(3*5 P=0.5)	602-B300-041	13	
	KNOB(7PCS)	604-MX1400-388	1	
C723	CERAMIC CAPACITOR(0.01uF/50V,Z,TAPING,Z5V)	413-3113-028	1	
C637	CERAMIC CAPACITOR(0.1uF/50V,Z,TAPING,Y5V)	413-3113-035	1	
C643,C644	ELEC. CAPACITOR(2.2uF/50V,M,105°C,TAPING 4*7,MINI)(Cd,Pb,Hg,	413-DV300-5156	2	
C636	ELEC. CAPACITOR(100uF/10V,M,105°C,TAPING 5*7,MINI)(Cd,Pb,Hg,	413-HMA2200-5017	1	

Mixer/Adaptor/Eq/Mic/Led PCB Ass'y Part List

REF NO.	DESCRIPTION	PART NO.	Q'TY	REMARK
C543,C563	POLYESTER CAPACITOR(0.0047uF/100V,J,TAPING)	413-HT8015-159	2	
C542,C562	POLYESTER CAPACITOR(0.018uF/50V,J,TAPING)	413-KC220-113	2	
C507,C508,C537,C545,C557,C565,C641,C642	ELEC. CAPACITOR(10uF/25V,M,105°C,TAPING 4*7,MINI)(Cd,Pb,Hg,C	413-SPPW3-235	8	
C501,C502,C511,C512	ELEC. CAPACITOR(22uF/16V,M,105°C,TAPING 4*7,MINI)(Cd,Pb,Hg,C	413-SPPW3-236	4	
C541,C561	POLYESTER CAPACITOR(0.0027uF/100V,J,TAPING)	413-SX2-959	2	
C538,C539,C558,C559	POLYESTER CAPACITOR(0.047uF/100V,J,TAPING)	413-SX2-961	4	
R591,R592	CARBON FILM RESISTOR(100K OHM,1/6W,J,T-26)	412-3113-047	2	
R861	CARBON FILM RESISTOR(12K OHM,1/6W,J,T-26)	412-3113-051	1	
R662	CARBON FILM RESISTOR((27K OHM,1/6W,J,T-26)	412-3113-054	1	
R197,R586,R787	CARBON FILM RESISTOR(4.7K OHM,1/6W,J,T-26)	412-3113-055	3	
R760	CARBON FILM RESISTOR(470 OHM,1/6W,J,T-26)	412-3113-056	1	
R800,R851,R852,R853,R854,R855	CARBON FILM RESISTOR(220 OHM,1/6W,J,T-26)	412-3113-058	6	
R633,R634,R636,R195,R295,R395,R495	CARBON FILM RESISTOR((18K OHM,1/6W,J,T-26)	412-3113-061	7	
R793,R788	CARBON FILM RESISTOR(1.2K OHM,1/6W,J,T-26)	412-3113-067	2	
R627,R665,R756,R757,R758	CARBON FILM RESISTOR(10K OHM,1/6W,J,T-26)	412-3113-068	5	
R565,R566	CARBON FILM RESISTOR((2.7K OHM,1/6W,J,T-26)	412-3113-073	2	
R732,R740,R748	CARBON FILM RESISTOR(1K OHM,1/6W,J,T-26)	412-3113-078	3	
R315,R415,R115,R215	CARBON FILM RESISTOR(30K OHM,1/6W,J,T-26)	412-DV300-291	4	
R784,R789,R794	CARBON FILM RESISTOR(2K OHM,1/6W,J,T-26)	412-HC1421FR-246	3	
R859	CARBON FILM RESISTOR(91 OHM,1/4W,J,TAPING)	412-ICD02KA-964	1	
R657	CARBON FILM RESISTOR(47 OHM,1/6W,J,T-26)	412-KC220-133	1	
R165,R167,R169,R265,R267,R269,R365,R367,R369,R465,R467,R469	CARBON FILM RESISTOR(5.1K OHM,1/6W,J,T-26)	412-KM281-294	12	
R790,R658,R795	CARBON FILM RESISTOR(3.9K OHM,1/6W,J,T-26)	412-KT300-107	3	
R314,R414,R114,R214	CARBON FILM RESISTOR (13K OHM,1/6W,J,T-26)	412-QSPAND-503	4	
ZD101	ZENER DIODE(MTZJ5.1-B,1/2W,T-77)	414-HDJ200-056	1	
	MIXER PCB	405-1400DSP-1861	1	
R778,R783	CHIP RESISTOR(1.2K OHM,1/10W,0603,J,TP, 50V)	412-007USB-671	2	
R166,R168,R170,R266,R268,R270,R366,R368,R370,R466,R468,R470	CHIP RESISTOR(5.1K OHM,1/10W,0603,J,TP ,50V)	412-007USB-673	12	
R661,R663,R664,R669,R670	CHIP RESISTOR(27K OHM,1/10W, 0603,J,TP,50V)	412-007USB-675	5	
R659	CHIP RESISTOR(2.7K OHM,1/10W,V,J,TP,50V)	412-007USB-677	1	
R609,R610,R639,R640	CHIP RESISTOR(220K OHM,1/10W, 0603,J,TP,50V)	412-007USB-678	4	
R517,R518,R540,R590,R653,R654	CHIP RESISTOR(15K OHM,1/10W,0603,J,TP ,50V)	412-007USB-687	6	
R179,R279,R379,R479,R615,R616	CHIP RESISTOR(910 OHM,1/10W,0603,J,TP ,50V)	412-007USB-691	6	
R537,R538,R587,R588,R780,R785	CHIP RESISTOR(3.9K OHM,1/10W,J,TP 0603,50V)	412-007USB-700	6	
R534,R535,R584,R585,R781,R786,R791	CHIP RESISTOR(12K OHM,1/10W,0603,J,TP ,50V)	412-007USB-702	7	
R635	CHIP RESISTOR(18K OHM,1/10W, 0603,J,TP,50V)	412-007USB-703	1	

Mixer/Adaptor/Eq/Mic/Led PCB Ass'y Part List

REF NO.	DESCRIPTION	PART NO.	Q'TY	REMARK
R539,R589	CHIP RESISTOR(22K OHM,1/10W,0603,J,TP ,50V)	412-007USB-704	2	
R779	CHIP RESISTOR(2KOHM,1/10W,J,TP 0603,50V)	412-900-1006	1	
R611,R612	CHIP RESISTOR(11KOHM,1/10W,J,TP 0603,50V)	412-900-1012	2	
R515,R516	CHIP RESISTOR(300OHM,1/10W,F,TP 0603,50V)	412-900-975	2	
R178,R278,R378,R478,R613,R614	CHIP RESISTOR(8.2K,1/10W,F,TP 0603,50V)	412-900-987	6	
R656,R655	CHIP RESISTOR(3KOHM,1/10W,F,TP 0603,50V)	412-900-994	2	
R876,R876A,R877,R877A, R878,R878A,R879,R879A, R880,R880A,R881,R881A, R882,R882A,R883,R884,R 884A,R885,R885A,R886,R 886A,R887,R887A,R888,R 888A	CHIP RESISTOR(220 OHM,1/10W,0603 ,J,TP 50V)	412-CDVD2001-521	25	
R536,R567,R568,R777,R7 82,R792	CHIP RESISTOR(4.7K OHM,1/10W, 0603,J,TP,50V)	412-CDVD2001-523	6	
R180,R280,R380,R480,R8 58	CHIP RESISTOR(47K OHM,1/10W,0603,J,TP ,50V)	412-CDVD2001-532	5	
R629,R505,R511,R506,R5 12,R181,R182,R281,R282, R381,R382,R481,R482,R5 01,R502,R507,R508,R617, R618,R619,R620,R628,R6 30,R666,R755,R798,R799	CHIP RESISTOR(10K OHM,1/10W,0603,J,TP ,50V)	412-CDVD2001-534	27	
R503,R504,R509,R510,R7 21,R722,R723,R724,R725, R726,R727,R728,R729,R7 30,R731,R733,R734,R735, R736,R737,R738,R739,R7 41,R742,R743,R744,R745, R746,R747,R749,R750,R7 51,R752,R761,R762,R763, R764,R765,R766,R767,R7 68,R769,R770,R771,R772, R773,R774,R775,R893,R8 94,R895,R896	CHIP RESISTOR(1K OHM,1/10W, 0603,J,TP,50V)	412-CDVD2001-540	52	
R671,R672	CHIP RESISTOR(470 OHM,1/10W, 0603,J,TP,50V)	412-CDVD2001-545	2	
R753,R754	CHIP RESISTOR(560 OHM,1/10W,0603,J,TP ,50V)	412-CDVD2001-549	2	
R513,R514	CHIP RRESISTOR(20K OHM,1/10W,0603,J,TP ,50V)	412-DCM280-726	2	
J508,J110,J609,J739,J1 11,J211,J311,J411,J771	CHIP RESISTOR(0 OHM,1/8W,1206,J,TP ,150V)	412-DJ3000-414	9	
C544,C564	CHIP CAPACITOR(47pF/50V,J,0603 TYPE,NPO)	413-007USB-784	2	
C736	CHIP CAPACITOR((680pF/50V,J,0603 TYPE,NPO)	413-007USB-785	1	
C505,C506,C509,C510,C540,C560	CHIP CAPACITOR(220pF/50V,0603,TYPE NPO)	413-007USB-787	6	
C519,C520	CHIP CAPACITOR(180pF/50V,J,0603 TYPE)	413-900-943	2	
C639,C640	CHIP CAPACITOR(68pF/50V,J,0603 TYPE,NPO)	413-DCM280-766	2	
C513,C514,C503,C504	CHIP CAPACITOR(100pF/50V,J,0603 TYPE,NPO)	413-DCM280-767	4	
C726,C727	CHIP CAPACITOR(1000pF/50V,K,0603 TYPE,X7R)	413-DCM280-768	2	
C721,C722,C724,C743,C7 44,C745,C746,C748,C749	CHIP CAPACITOR(0.01uF/50V,K,0603 TYPE,X7R)	413-DCM280-771	9	

Mixer/Adaptor/Eq/Mic/Led PCB Ass'y Part List

REF NO.	DESCRIPTION	PART NO.	Q'TY	REMARK
C752,C176,C276,C376,C476,C515,C516,C517,C518,C521,C522,C601,C602,C603,C604,C607,C608,C645,C646,C733,C734,C737,C738,C739	CHIP CAPACITOR(0.1uF/50V,Z,0603 TYPE,Y5V)	413-DCM280-773	24	
D111,D112,D211,D212,D311,D312,D411,D412	SWITCHING DIODE(1SS355,UMD2,SMD,TAPING)	414-CD1000-075	8	
D747,D748	ESD DIODE(RSB6.8S-TE61)	414-DJ1100G-207	2	
Q721,Q722	TRANSISTOR(DTC124EKAT146/DTC124EKA)	416-CDN88-044	2	
Q605	TRANSISTOR(2SC2712-GR,2-3F1A)	416-CTB200-166	1	
Q101,Q201,Q301,Q401,Q503,Q504	TRANSISTOR(2SC4695)	416-DAIA-273	6	
IC722	IC(LC75834W,SQFP-48)	417-CDU100-684	1	
IC724,IC725	IC(74AHC595D/74AHC595DR,SOP-16)	417-HDJ9800-643	2	
IC501,IC502	IC(NJM-2068M-TE2,SOP8)	417-M5-582	2	
IC503,IC601,IC602,IC611	IC(BA15218F/BA15218FE2,SOP-8)	417-QMX2-167	4	
	ADAPTOR PCB ASS'Y	704-1400DSP-6634	1	
W721	12P 2.5 CONNECTOR WIRE(L=390mm,+/-,UL2468#26*6C*2 TC BLACK&W	404-1400-2607	1	
CN701B	23P FFC JACK	404-1400DSP-2437	1	
W03	3P 2.5 CONNECTOR WIRE(L=55mm,+/-,UL2468#26*3C TC BLACK&WHITE	404-1400DSP-2603	1	
CN606B	15P FFC CONNECTOR	404-300-1915	1	
CN702B	SOCKET(13P FFC)	404-385-2086	1	
IC803	IC SOCKET(1001-32-T-P,PLCC,32PIN,DIP TYPE)	404-CDN88-016	1	
CN01	9P SOCKET(S9B-PH-K,P=2mm,JST,90 DEGREE)	404-DJ3000-809	1	
CN602	11P SOCKET(S11B-PH-K,P=2mm,JST,90 DEGREE)	404-HDJ9700-1556	1	
CN503	3P SOCKET(CKM2501WR-3P 90°WHITE)(Cd,Pb,Hg,Cr)	404-KMD3500-609A	1	
CN02	4P 2.5SOCKET(S4B-XH-A,90°,JST)	404-QMX2-606	1	
RB701	THICK FILM RESISTOR NETWORKS(100Kohm,J,9P8R,RA TYPE)	412-1400DSP-1197	1	
RB721,RB723	THICK FILM RESISTOR NETWORKS(10K OHM,J,RA TYPE,8R9P)	412-DV300-5143	2	
RB722	THICK FILM RESISTOR NETWORKS(10K OHM,J,RA TYPE,5R6P)	412-HDJ200-263	1	
RB702	THICK FILM RESISTOR NETWORKS(100Kohm,J,7P6R,RA TYPE)	412-MH2-1066	1	
IC610	INTEGRATED CIRCUIT(NJM-4556AD)	417-3113-018	1	
IC111,IC311,IC507,IC702	IC(LC78213,DIP30)	417-DRM120-510	4	
IC504	IC LC78212	417-HMA2200-5030	1	
IC807	IC(BA033T/FP 3.3V TO220FP 3PIN)	417-HV3500K-253	1	
IC110,IC210,IC310,IC410	IC(M51132L)	417-SA12-487	4	
X721	CITIZEN BRAND(CSA-309,16MHz)	427-CDN88-072	1	
X801	CRYSTAL(16.9344MHz)	427-KC710-019	1	
C802,C810,C862,C870	E/C(47uF/16V,M,105°C,TAPING,5*7,SS)(Cd,Pb,Hg,Cr)	413-CDVD2001-265	4	
C703,C704	ELEC. CAPACITOR(2.2uF/50V,M,105°C,TAPING 4*7,MINI)(Cd,Pb,Hg,	413-DV300-5156	2	
C725,C731,C805,C807,C809,C817,C819,C823,C827,C849,C851,C865,C867,C869,C872	ELEC. CAPACITOR(100uF/10V,M,105°C,TAPING 5*7,MINI)(Cd,Pb,Hg,	413-HMA2200-5017	15	
C621,C622,C715,C716,C821	ELEC. CAPACITOR(4.7uF/50V,M,105°C,TAPING 4*7,MINI)(Cd,Pb,Hg,	413-HT801K-191	5	
C820,C873	ELEC. CAPACITOR(220uF/10V,M,105°C,TAPING 6*7,MINI)(Cd,Pb,Hg,	413-HT801K-192	2	

Mixer/Adaptor/Eq/Mic/Led PCB Ass'y Part List

REF NO.	DESCRIPTION	PART NO.	Q'TY	REMARK
C139,C627,C628	ELEC. CAPACITOR(100uF/16V,M,105°C,TAPING 6.3*7,MINI)(Cd,Pb,H	413-HT801K-193	3	
C179,C180,C181,C279,C280,C281,C379,C380,C381,C479,C480,C481,C701,C702,C822	ELEC. CAPACITOR(1uF/50V,M,105°C,TAPING 4*7,MINI)(Cd,Pb,Hg,Cr	413-SPPW3-234	15	
C183,C283,C383,C483,C523,C524,C629,C630	ELEC. CAPACITOR(10uF/25V,M,105°C,TAPING 4*7,MINI)(Cd,Pb,Hg,C	413-SPPW3-235	8	
C182,C282,C382,C482,C527,C528,C546,C547,C619,C620,C719,C720	ELEC. CAPACITOR(22uF/16V,M,105°C,TAPING 4*7,MINI)(Cd,Pb,Hg,C	413-SPPW3-236	12	
IC112	IC(KIA78S12P,TAPING,TO-92)	417-DCM370E3-373	1	
R649,R650	CARBON FILM RESISTOR(100 OHM,1/4W,J,T-52)	412-PMSE1-279	2	
ZD501	ZENER DIODE(MTZJ10-B,1/2W,T-77)	414-SPPW3-061	1	
L801,L802,L804,L806,L807,L721	BEAD CORE(TB36-863445NP T-26mm)	415-HV3500K-090	6	
	ADAPTOR PCB	405-1400DSP-1865	1	
R543,R544,R647,R648	CHIP RESISTOR(30KOHM,1/10W,J,TP 0603,50V)	412-007USB-672	4	
R185,R186,R285,R286,R385,R386,R485,R486,R551,R552	CHIP RESISTOR(5.1K OHM,1/10W,0603,J,TP ,50V)	412-007USB-673	10	
R601,R643,R644	CHIP RESISTOR(2.7K OHM,1/10W,V,J,TP,50V)	412-007USB-677	3	
R187,R193,R194,R287,R293,R294,R387,R393,R394,R487,R493,R494,R553,R554,R555,R556,R605,R606,R607,R608,R621,R622,R625,R626,R673,R674	CHIP RESISTOR(15K OHM,1/10W,0603,J,TP ,50V)	412-007USB-687	26	
R806,R807,R808,R816,R818,R824	CHIP RESISTOR(1 OHM,1/10W,0603,J, TP ,50V)	412-007USB-695	6	
R703,R704	CHIP RESISTOR(3.3K OHM,1/10W, 0603,J,TP,50V)	412-007USB-699	2	
R709	CHIP RESISTOR(18K OHM,1/10W, 0603,J,TP,50V)	412-007USB-703	1	
R521,R522,R569,R570,R571,R572,R573,R574,R603,R604,R705,R706	CHIP RESISTOR(22K OHM,1/10W,0603,J,TP ,50V)	412-007USB-704	12	
R188,R288,R388,R488	CHIP RESISTOR(180KΩ,1/10W,J,TP 0603,50V)	412-007USB-728	4	
R651,R652	CHIP RESISTOR(33OHM,1/10W,J,TP 0603,50V)	412-007USB-782	2	
R802,R804,R805,R815,R827,R828	CHIP RESISTOR(10歐姆,1/10W,J,TP 0603,50V)	412-810-966	6	
R549,R550	CHIP RESISTOR(820OHM,1/10W,J,TP 0603,50V)	412-900-1010	2	
R801,R803	CHIP RESISTOR(62KOHM,1/10W,F,TP 0603,50V)	412-900-986	2	
R811,R812,R813,R814,R820,R823,R825,R826,R829,R830,R868,R869,R870,R871,R872,R873,R874,R875,R889,R890,R891,R892	CHIP RESISTOR(220 OHM,1/10W,0603 ,J,TP 50V)	412-CDVD2001-521	22	
R545,R645,R646	CHIP RESISTOR(4.7K OHM,1/10W, 0603,J,TP,50V)	412-CDVD2001-523	3	
R821,R822,R832	CHIP RESISTOR(100 OHM,1/10W, 0603,J,TP,50V)	412-CDVD2001-530	3	
R707,R708	CHIP RESISTOR(47K OHM,1/10W,0603,J,TP ,50V)	412-CDVD2001-532	2	

Mixer/Adaptor/Eq/Mic/Led PCB Ass'y Part List

REF NO.	DESCRIPTION	PART NO.	Q'TY	REMARK
R183,R184,R189,R190,R283,R284,R289,R290,R383,R384,R389,R390,R483,R484,R489,R490,R523,R524,R542,R547,R548,R701,R702,R759,R796,R797,R809,R810,R819,R833,R834,R835,R836,R837,R860,R862,R863	CHIP RESISTOR(10K OHM,1/10W,0603,J,TP ,50V)	412-CDVD2001-534	37	
R519,R520,R541	CHIP RESISTOR(100K OHM,1/10W,0603 ,J,TP ,50V)	412-CDVD2001-537	3	
R831	CHIP RESISTOR(1M OHM,1/10W,0603,J,TP ,50V)	412-CDVD2001-546	1	
R838,R839,R840	CHIP RESISTOR(0 OHM,1/10W, 0603,J,TP ,50V)	412-CDVD2001-552	3	
JP721	CHIP RESISTOR (0 OHM,1/8W,0805,J,TP 150V)	412-HV3500K-367	1	
C830	CHIP CAPACITOR(10pF/50V,J,0603 TYPE,NPO)	413-007USB-780	1	
C555,C556,C615,C616,C617,C618,C717,C718	CHIP CAPACITOR(47pF/50V,J,0603 TYPE,NPO)	413-007USB-784	8	
C751	CHIP CAPACITOR(470pF/50V,J,0603 TYPE,NPO)	413-007USB-786	1	
C874	CHIP CAPACITOR(220pF/50V,0603,TYPE NPO)	413-007USB-787	1	
C834	CHIP CAPACITOR(1800pF/50V,K,0603 TYPE,X7R)	413-1400DSP-1028	1	
C535,C536	CHIP CAPACITOR(33pF/50V,J,0603 TYPE,NPO)	413-900-926	2	
C728,C729,C828,C829	CHIP CAPACITOR(20pF/50V,J,0603 TYPE,NPO)	413-DCM280-764	4	
C553,C554,C631,C632	CHIP CAPACITOR(27pF/50V,J,0603 TYPE,NPO)	413-DCM280-765	4	
C633,C634	CHIP CAPACITOR(1500pF/50V,K,0603 TYPE,X7R)	413-DCM280-769	2	
C165,C166,C365,C366,C529,C530,C531,C532,C533,C551,C552,C613,C614,C623,C625,C705,C706,C707,C713,C714,C730,C742,C818,C825,C826,C859,C801,C803,C804,C806,C808,C811,C812,C813,C814,C815,C816,C824,C832,C833,C835,C836,C837,C838,C839,C840,C841,C842,C843,C844,C845,C846,C847,C848,C850,C852,C853,C854,C861,C863,C864,C866,C868,C871	CHIP CAPACITOR(0.1uF/50V,Z,0603 TYPE,Y5V)	413-DCM280-773	64	
Q701,Q801	TRANSISTOR(DTC124EKAT146/DTC124EKA)	416-CDN88-044	2	
Q505,Q723	TRANSISTOR(DTA124EKA-T146,SMT3)	416-CTB200-178	2	
Q501,Q502,Q603,Q604	TRANSISTOR(2SC4695)	416-DAIA-273	4	
IC804	IC(74HC04/74HC04DT,SOP-14)	417-DCM370E3-378	1	
IC805	IC(XCB56362PV100/DSPB56362PV100)	417-HDJ2000-420	1	
IC508,IC608,IC609	IC(NJM-4558M-TE3,8PIN,SMD)	417-PS2-577	3	
IC806	IC(IC41LV16100S-50KG/IS41LV16100B-50KL,SOJ-42)	417-QFX19-565	1	
IC505,IC506,IC607,IC701	IC(BA15218F/BA15218FE2,SOP-8)	417-QMX2-167	4	
IC801,IC802	IC(UDA1345TS/(UDA1345TS/NS,118),SSOP28)	417-SA12-490	2	
IC721	CONTROL IC ASS'Y	704-1400DSP-6874	1	
	IC(TMP86FS49AUG,SSOP64)	417-MCX-742A	1	

IO PCB Ass'y Part List

REF NO.	DESCRIPTION	PART NO.	Q'TY	REMARK
	IO PCB ASS'Y	704-1400DSP-6630	1	
	BRACKET(L TYPE)	300-HDJ7000-472	1	
JK101,JK201	GROUND PLATE	300-QFX19-811	2	
SW101,SW201,SW301	SLIDE SW(SSSF122NA1-HF,6PIN)	403-QMX1-060	3	
CN721	12P 2.5 SOCKET(B12B-XH-A,JST,180°,WHITE)	404-1400-2544	1	
W903	3P 2.5CONNECTOR WIRE(L=110mm,+/-,UL2468#26*3C TC BLACK&WHITE)	404-1400-2604	1	
CN902	12P 2.5 SOCKET(S12B-XH-A,JST,90°)	404-6SRS-2289	1	
CN504	3P SOCKET(CKM2001 WV-3P, 白色 180度)	404-HP1010K-259A	1	
CN401,CN507	3P SOCKET(B3B-XH-A,P=2.5mm,180DEGREE)	404-HV3500K-623A	2	
RB101,RB102	THICK FILM RESISTOR NETWORKS(47KOHM,J,RA TYPE,8R9P)	412-900-978	2	
IC906	IC LC78212	417-HMA2200-5030	1	
IC103,IC203,IC303,IC403	IC(LC78211,DIP-30)	417-QFX19-629	4	
VR509	VR(10KB*2,L=16)	418-SX2-342	1	
JK721,JK722,JK723,JK724	HEADPHONE JACK(Φ 3.5,2K6A/-3537*01-030)	420-HDJ7100-063	4	
JK691	MIC JACK(6.4,JY-6313-02-030)	420-HMJ1001-5034	1	
JK301	6P RCA JACK(RJ-1074-09-0300A)(Cd,Pb)	420-HMJ1901-5037	1	
JK101,JK201	4P RCA JACK(RJ-1073-09-0300A)(Cd,Pb)	420-QMX1-094	2	
	SCREW(3*5 P=0.5)	602-B300-041	1	
	STANNUM(ZS-QR-057,M705)	611-BJ2300E-008	2.315	
	STANNUM	611-BJ2300E-008A	6.945	
C105,C106,C205,C206,C305,C306	POLYESTER CAPACITOR(0.012uF/50V,J,TAPING)	413-3113-060	6	
C103,C104,C203,C204,C303,C304	E/C(47uF/16V,M,105°C,TAPING,5*7,SS)(Cd,Pb,Hg,Cr)	413-CDVD2001-265	6	
C107,C108,C207,C208,C307,C308	POLYESTER CAPACITOR(0.0033uF/100V,J,TAPING)	413-KT300-103	6	
C111,C112,C117,C118,C211,C212,C217,C218,C311,C312,C317,C318,C405,C406,C417,C418,C691,C692,C698	ELEC. CAPACITOR(22uF/16V,M,105°C,TAPING 4*7,MINI)(Cd,Pb,Hg,C	413-SPPW3-236	19	
	IO PCB	405-1400DSP-1866	1	
R107,R108,R207,R208,R307,R308	CHIP RESISTOR(270K OHM,1/8W,J,TP 0805,150V)	412-AMC110D-5077	6	
R218,R318,R118,R117,R217,R317	CHIP RESISTOR((150 OHM,1/8W, 0805 ,J,TP,150V)	412-CDN88-032	6	
R101,R102,R201,R202,R301,R302	CHIP RESISTOR(100 OHM,1/8W,0805,J,TP 150V)	412-DV330-304	6	
R694,R113,R114,R213,R214,R313,R314,R403,R404,R413,R414,R693	CHIP RESISTOR(1K OHM,1/8W, 0805,J,TP 150V)	412-DV330-305	12	
R691,R692,R698	CHIP RESISTOR(10K OHM,1/8W,0805,J,TP 150V)	412-DV330-306	3	
R111,R112,R211,R212,R311,R312,R401,R402,R411,R412	CHIP RESISTOR(20K OHM,1/8W,0805,J,TP ,150V)	412-DV330-311	10	
R109,R110,R209,R210,R309,R310	CHIP RESISTOR(22K OHM,1/8W, 0805,J,TP 150V)	412-DV330-314	6	

IO PCB Ass'y Part List

REF NO.	DESCRIPTION	PART NO.	Q'TY	REMARK
R103,R104,R203,R204,R303,R304,R699	CHIP RESISTOR(47K OHM,1/8W,0805,J,TP 150V)	412-DV330-321	7	
R946	CHIP RESISTOR(15K OHM,1/8W,0805,J,TP 150V)	412-DV330-331	1	
R105,R106,R205,R206,R305,R306	CHIP RESISTOR(300 OHM,1/8W,J,TP 0805,150V)	412-QFX19-555	6	
R697	CHIP RESISTOR(5.1K OHM,1/8W, 0805,J,TP,150V)	412-QMX2-188	1	
R605,R696	CHIP RESISTOR(51K OHM,1/8W,J,TP 0805,150V)	412-SA12-560	2	
C693,C694	CHIP CAPACITOR(47pF/50V,J,0805 TYPE,NPO)	413-AMC110D-5094	2	
C013,C014,C020,C021,C027,C028,C113,C114,C213,C214,C313,C314,C401,C402,C413,C414,C689,C690	CHIP CAPACITOR(220pF/50V,J,0805 TYPE,NPO)	413-AMC110D-5104	18	
C011,C012,C015,C016,C018,C019,C022,C023,C025,C026,C029,C030,C101,C102,C201,C202,C301,C302,C407,C408,C411,C412	CHIP CAPACITOR(100pF/50V,J,0805 TYPE,NPO)	413-DV330-310	22	
C751,C752,C753,C754,C755,C756,C757,C758,C119,C120,C219,C220,C319,C320,C419,C688	CHIP CAPACITOR(0.01uF/50V,K,0805 TYPE,X7R)	413-DV330-312	16	
C017,C024,C109,C110,C115,C121,C122,C209,C210,C215,C221,C222,C309,C310,C315,C316,C321,C322,C403,C404,C409,C410,C415,C416,C695,C696,C937,C938,C939	CHIP CAPACITOR(0.1uF/ 50V,Z,0805 TYPE,Y5V)	413-DV330-313	29	
C697	CHIP CAPACITOR(68pF/50V,J,0805 TYPE,NPO)	413-QMX2-133	1	
Q914	TRANSISTOR(DTC114EKAT146,SMT3)	416-HDJ2460-234	1	
IC691	IC(NJM-2068M-TE2,SOP8)	417-M5-582	1	
IC101,IC102,IC201,IC202,IC301,IC302,IC401,IC402	IC(BA15218F/BA15218FE2,SOP-8)	417-QMX2-167	8	

Power PCB Ass'y Part List

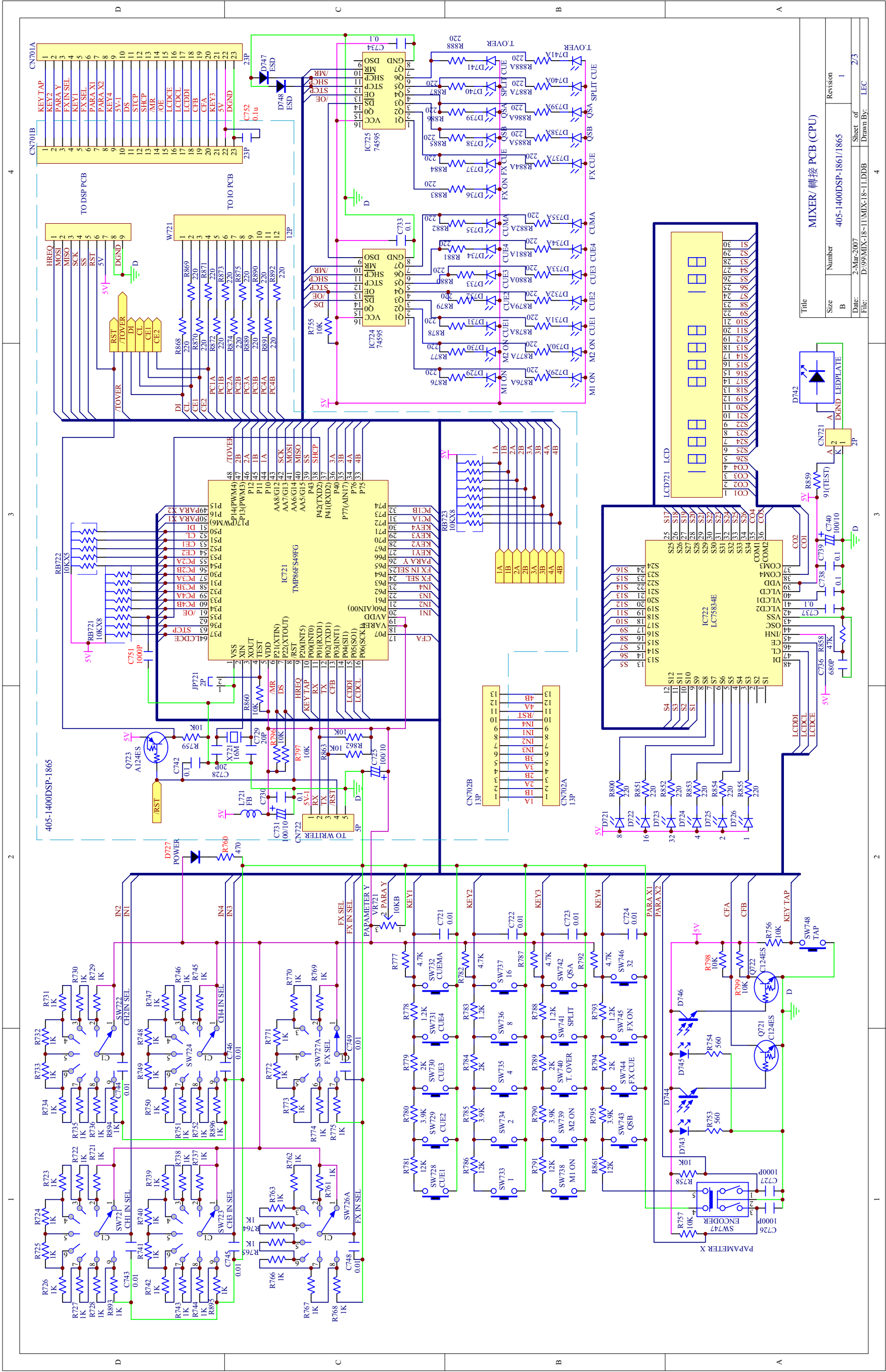
REF NO.	DESCRIPTION	PART NO.	Q'TY	REMARK
	POWER PCB ASS'Y	704-1400DSP-6937	1	
	BRACKET(L TYPE)	300-HDJ7000-472	1	
CN901B	12P 2.5 SOCKET(B12B-XH-A,JST,180°,WHITE)	404-1400-2544	1	
IC002	3P 2.5CONNECTOR WIRE(L=100mm,+/,UL1007#26)	404-1400-2611	1	
IC001	3P 2.5CONNECTOR WIRE(L=90mm,+/,UL1007#26)	404-1400-2612	1	
IC003	3P 2.5CONNECTOR WIRE(L=120mm,+/,UL1007#26)	404-1400-2613	1	
CN02,CN03	6P SOCKET(CKM2001WV-6P 180°WHITE)(Cd,Pb,Hg,Cr)	404-3113-052A	2	
CN901A	10P SOCKET(B10B-XH-A,P=2.5mm)	404-HDJ7100-761	1	
CN01	5P SOCKET(P=3.75mm)	404-HV3363K-555	1	
CN903	3P SOCKET(B3B-XH-A,P=2.5mm,180DEGREE)	404-HV3500K-623A	1	
C005	ELEC. CAPACITOR(3300uF/16V,M, 105°C ,BULK 13*26)(Cd,Pb,Hg,Cr)	413-HDJ200-230	1	
C001,C002	ELEC. CAPACITOR(2200uF/25V,M, 105°C ,BULK 13*21)(Cd,Pb,Hg,Cr)	413-HT8023K-188	2	
D001,D002,D003,D004,D005,D006,D007,D008,D009,D010	RECTIFYING DIODE(1N4004,1A/400V,TAPING)	414-DV300-055	10	
T901	COIL(P-7GB)	415-RCC955A-091	1	
VR901	VR(10KB*2,L=16)	418-SX2-342	1	
JK907	1P RCA JACK(RJ-1081-31-0341A)(Pb.Cd)	420-HDJ2650-097A	1	
F001,F002,F003	FUSE CLIPS(FS-001)	420-KT350A-004	6	
JK901,JK902	2P RCA JACK(RJ-1078-10-0300A)	420-RCC955A-073	2	
F001,F002	FUSE(1A,250V)	422-HDJ7100-022	2	
F003	FUSE(TSD 2A/250V)	422-HTV8033-5008	1	
X901	CRYSTAL(11.289MHZ)	427-900-113	1	
	FUSE COVER	504-DJ2500J-046	3	
	SPACER SUPPORT(H-25)	504-RMX50BPM-163	3	
	SCREW(3*5 P=0.5)	602-B300-041	4	
D005,D006,D007,D008	CERAMIC TUBE (4*2*11.5mm)	605-KMD510P-034	4	
	MAT FORBASE	612-HDJ201-053	4	
C007,C927,C929,C930	CERAMIC CAPACITOR(0.1uF/50V,Z,TAPING,Y5V)	413-3113-035	4	
C923,C924,C925,C926	ELEC. CAPACITOR (0.33uF/50V K +/-10% 4*7 NP TAPING)	413-3113-054	4	
C008	ELEC. CAPACITOR(220uF/25V,M, 105°C ,TAPING 8*12)(Cd,Pb,Hg,Cr)	413-DV300-292	1	
C010	ELEC. CAPACITOR(2.2uF/50V,M,105°C ,TAPING 4*7,MINI)(Cd,Pb,Hg,	413-DV300-5156	1	
C006,C967	ELEC. CAPACITOR(100uF/10V,M,105°C ,TAPING 5*7,MINI)(Cd,Pb,Hg,	413-HMA2200-5017	2	
C971	ELEC. CAPACITOR(220uF/10V,M,105°C ,TAPING 6*7,MINI)(Cd,Pb,Hg,	413-HT801K-192	1	
C003,C004,C931,C932,C933,C934,C955,C956,C957,C958	ELEC. CAPACITOR(100uF/16V,M,105°C ,TAPING 6.3*7,MINI)(Cd,Pb,H	413-HT801K-193	10	
C921,C922	ELEC. CAPACITOR(1uF/50V,M,105°C ,TAPING 4*7,MINI)(Cd,Pb,Hg,Cr	413-SPPW3-234	2	
C915,C916	ELEC. CAPACITOR(10uF/25V,M,105°C ,TAPING 4*7,MINI)(Cd,Pb,Hg,C	413-SPPW3-235	2	
C009	ELEC. CAPACITOR(22uF/16V,M,105°C ,TAPING 4*7,MINI)(Cd,Pb,Hg,C	413-SPPW3-236	1	
Q001	TRANSISTOR(2SD1384(R)/2SD1207T,TAPING)	416-1360S-016	1	
Q901,Q902,Q903,Q904,Q905,Q906,Q907,Q908,Q909,Q910,Q911,Q912	TRANSISTOR(2SC2878-B(TE2.M)	416-AMC110A-5017	12	
Q003	TRANSISTOR(DTA124ESTP TAPING OR 2SA1346)	416-KC710-038	1	
Q002	TRANSISTOR(DTA124TS/2SA1589/DTA124TSATP,TAPING)	416-KE200S-024	1	
R005	CARBON FILM RESISTOR(5.6K OHM,1/6W,J,T-26)	412-3113-044	1	
R001,R003	CARBON FILM RESISTOR(100K OHM,1/6W,J,T-26)	412-3113-047	2	

OTHER P.C.B ASS'Y PART LIST

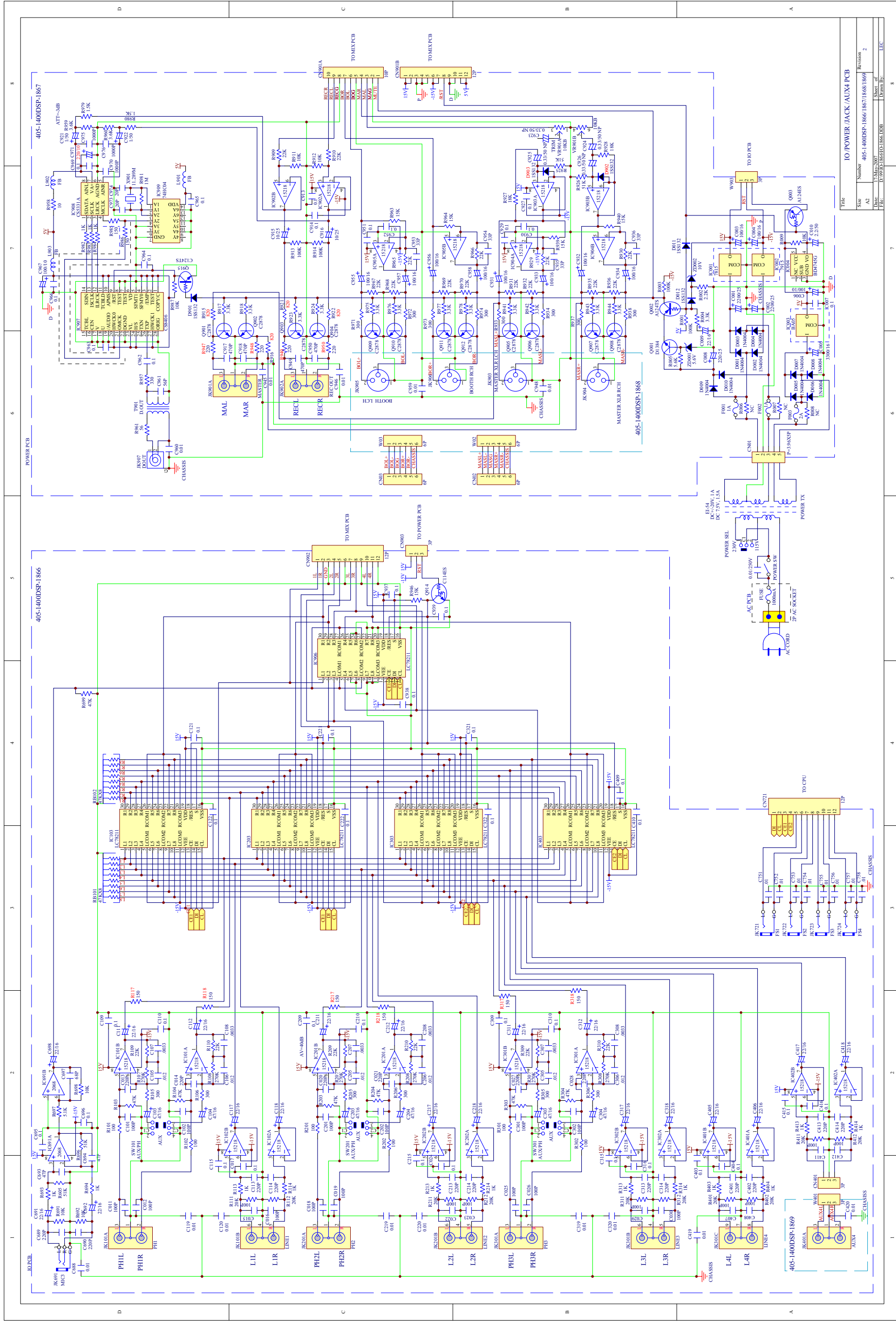
REF NO.	DESCRIPTION	PART NO.	Q'TY	REMARK
R002	CARBON FILM RESISTOR(2.2K OHM,1/6W,J,T-26)	412-3113-048	1	
R939,R940,R963,R964	CARBON FILM RESISTOR(15K OHM,1/6W,J,T-26)	412-3113-053	4	
R004,R941,R942,R943,R944,R975,R976,R977,R978	CARBON FILM RESISTOR((3.3K OHM,1/6W,J,T-26)	412-3113-057	9	
R931,R932,R935,R936,R967,R968,R969,R970	CARBON FILM RESISTOR(22K OHM,1/6W,J,T-26)	412-3113-059	8	
R009	CARBON FILM RESISTOR(10K OHM,1/6W,J,T-26)	412-3113-068	1	
R933,R934,R937,R938,R971,R972,R973,R974	CARBON FILM RESISTOR(300 OHM,1/6W,J,T-26)	412-HDJ7200-439	8	
R925,R926	CARBON FILM RESISTOR(51K OHM,1/6W,J,T-26)	412-KM300-116	2	
D012,D011	SWITCHING DIODE(1SS132/1SS133,300mw,55V,T-77)	414-3113-005	2	
ZD002	ZENER DIODE(MTZJ10-C,1/2W,T-77)	414-HT7016-027	1	
ZD001	ZENER DIODE(MTZJ5.6-B,1/2W,T-77)	414-HT8033-032	1	
L901,L902,L903	BEAD CORE(TB36-863445NP T-26mm)	415-HV3500K-090	3	
	POWER PCB	405-1400DSP-1867	1	
R927,R928	CHIP RESISTOR(18K OHM 1/8W 0805 J TP 150V)	412-AMC110D-5057	2	
R985,R986	CHIP RESISTOR((150 OHM,1/8W, 0805 ,J,TP,150V)	412-CDN88-032	2	
R982,R983,R984	CHIP RESISTOR(1K OHM,1/8W, 0805,J,TP 150V)	412-DV330-305	3	
R911,R912,R987	CHIP RESISTOR(10K OHM,1/8W,0805,J,TP 150V)	412-DV330-306	3	
R913,R914	CHIP RESISTOR(100K OHM,1/8W, 0805,J,TP 150V)	412-DV330-307	2	
R981	CHIP RESISTOR(1M OHM,1/8W, 0805,J,TP 150V)	412-DV330-308	1	
R909,R910,R929,R930,R965,R966	CHIP RESISTOR(22K OHM,1/8W, 0805,J,TP 150V)	412-DV330-314	6	
R917,R918,R923,R924	CHIP RESISTOR(3.3K OHM,1/8W, 0805,J,TP,150V)	412-DV330-317	4	
R915,R916,R922,R921	CHIP RESISTOR(820 OHM,1/8W, 0805,J,TP 150V)	412-DV330-324	4	
R947,R948,R949,R950	CHIP RESISTOR(220 OHM,1/8W,0805,J,TP 150V)	412-DV330-333	4	
R957	CHIP RESISTOR(330 OHM,1/8W,0805,J,TP ,150V)	412-DV330-335	1	
R958	CHIP RESISTOR(10 OHM,1/8W, 0805,J,TP,150V)	412-DV330-344	1	
R961	CHIP RESISTOR(56 OHM,1/8W,J,TP 0805,150V)	412-HPR1-856	1	
R979,R980	CHIP RESISTOR (1.5K OHM,1/8W, 0805,J,TP,150V)	412-QMX1-035	2	
R959,R960	CHIP RESISTOR(3.6K OHM,1/8W,J,TP 0805,150V)	412-QMX2-176	2	
C935,C936,C953,C954	CHIP CAPACITOR(33pF/50V,J,0805 TYPE,NPO)	413-CDN20-081	4	
C917,C918,C949	CHIP CAPACITOR(470pF/50V,J,0805 TYPE,NPO)	413-DAIA-897	3	
C970,C975,C976	CHIP CAPACITOR(1000pF/50V,J,0805 TYPE,NPO)	413-DV330-311	3	
C945,C946,C960	CHIP CAPACITOR(0.01uF/50V,K,0805 TYPE,X7R)	413-DV330-312	3	
C913,C914,C951,C952,C962,C963,C964,C965,C966,C969	CHIP CAPACITOR(0.1uF/ 50V,Z,0805 TYPE,Y5V)	413-DV330-313	10	
C974,C973	CHIP CAPACITOR(20pF/ 50V,J,0805 TYPE,NPO)	413-DV330-315	2	
C950	CHIP CAPACITOR(470pF/50V,K,0805 TYPE,X7R)	413-PRODJ2-464	1	
C961	CHIP CAPACITOR(56pF/50V,J,0805 TYPE,NPO)	413-RCC1055-697	1	
D901,D902,D903	SWITCHING DIODE(1SS355,UMD2,SMD,TAPING)	414-CD1000-075	3	
Q915	CHIP TRANSISTOR(DTC124TKA)	416-DFX1-201	1	
IC909	IC(74HC04/74HC04DT,SOP-14)	417-DCM370E3-378	1	
IC908	IC(CS5331A-KS)	417-HDJ1000-508	1	
IC004	IC(BD4745G/BD4745G-TR)	417-HDJ2000-503	1	
IC907	IC(CS8406-CSZ,SOIC)	417-MH2-787	1	
IC902,IC903,IC904,IC905	IC(BA15218F/BA15218FE2,SOP-8)	417-QMX2-167	4	

Ac Jack & Jack & Ic & Aux & Phone PCB Ass'y Part List

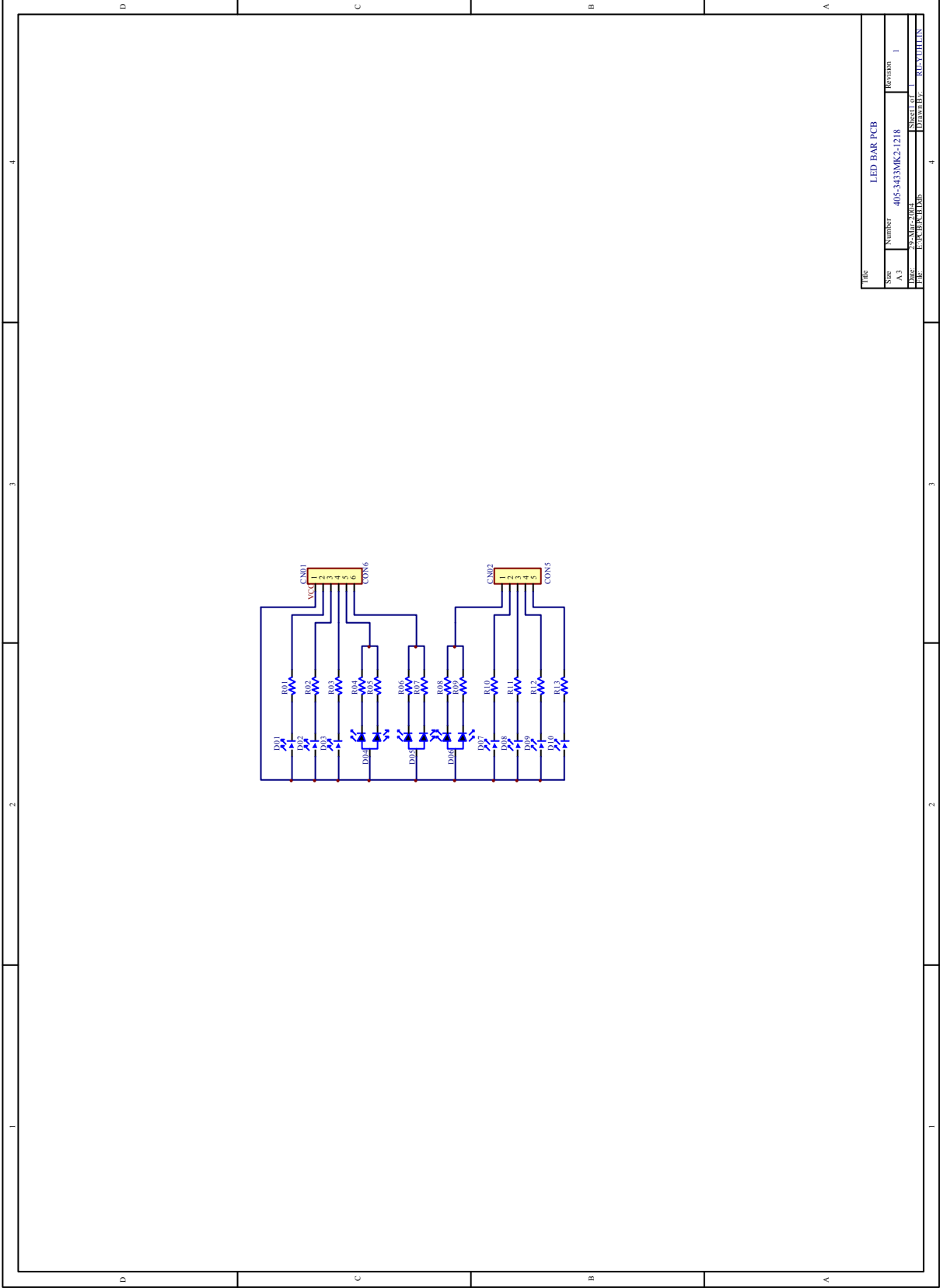
REF NO.	DESCRIPTION	PART NO.	Q'TY	REMARK
	AC JACK ASS'Y(VDE)	704-1400B-6936	1	
CN604	2P SOCKET(P=3.96mm,180 DEGREES)	404-BEAT6-1597	1	
JK605	AC JACK(SO-222)	404-DJ2-021	1	
	AC JACK PCB(BARE,94V0,122*163*1.6t)	405-50BPM-1372	1	
	1P WIRE(L=90mm,AWM1007,AWG22,YELLOW)	406-1400-919	1	
	FUSE CLIPS(FS-001)	420-KT350A-004	2	
F600	FUSE(1A,250V)	422-HDJ7100-022	1	
	SEGREGATE SHEET(T=0.4mm)	501-RMX40-1808	1	
	FUSE COVER	504-DJ2500J-046	1	
	CANOE CLIPS(MB-1S)	504-HF6011-5011	2	
	JACK PCB ASS'Y	704-1400DSP-6638	1	
W02,W03	6P 2.0 CONNECTOR WIRE(L=60mm,+/,UL1007#26 TS RED&BLACK*5)	404-1400-2606	2	
JK904,JK905,JK906,JK907	SOCKET(94M-008P)	420-RMX40-201	4	
	JACK PCB	405-1400DSP-1868	1	
C948,C959	CHIP CAPACITOR(0.1uF/ 50V,Z,0805 TYPE,Y5V)	413-DV330-313	2	
	IC PCB ASS'Y	704-1400DSP-6904	1	
CN03	3P SOCKET	404-HT8015-328	1	
CN02	3P SOCKET	404-HT8015-329	1	
CN01	3P SOCKET(B3B-XH-A,P=2.5mm,180DEGREE)	404-HV3500K-623A	1	
	IC PCB(140*121.5*1.6t)	405-MACH2-1880	1	
CN01	IC(BA05T,3PIN)	417-CDN34A-314	1	
CN03	IC(NJM7815FA 3PIN)	417-DV330-216	1	
CN02	IC(NJM7915FA)	417-RCC955A-291	1	
	HEADSINK	425-M2-095	1	
	IC ISOLATION(T=0.3mm PC)	501-M2-1984	1	
	CANOE CLIPS(MB-1S)	504-HF6011-5011	2	
	SCREW(3*L8)	602-HP1010K-175	3	
	STANNUM(ZS-QR-057,M705)	611-BJ2300E-008	0.07	
	STANNUM	611-BJ2300E-008A	0.21	
	AUX PCB ASS'Y	704-1400DSP-6637	1	
	BRACKET(L TYPE)	300-HDJ7000-472	1	
W401	3P 2.5 CONNECTOR WIRE(L=100mm,+/,UL2547#28*2C TS GRAY)	404-1400-2605	1	
JK401	2P RCA JACK(RJ-1078-10-0300A)	420-RCC955A-073	1	
	SCREW(3*5 P=0.5)	602-B300-041	1	
	AUX PCB	405-1400DSP-1869	1	
C420	CHIP CAPACITOR(0.1uF/ 50V,Z,0805 TYPE,Y5V)	413-DV330-313	1	
	PHONE PCB ASS'Y	704-1400DSP-6640	1	
	JACK GROUND PLATE	300-300-1171	1	
CN03	3P SOCKET(B3B-XH-A,P=2.5mm,180DEGREE)	404-HV3500K-623A	1	
JK601	MIC JACK(6.4,JY-6313-02-030)	420-HMJ1001-5034	1	
	PHONE PCB	405-1400DSP-1862	1	
C635	CHIP CAPACITOR(0.1uF/50V,Z,0603 TYPE,Y5V)	413-DCM280-773	1	



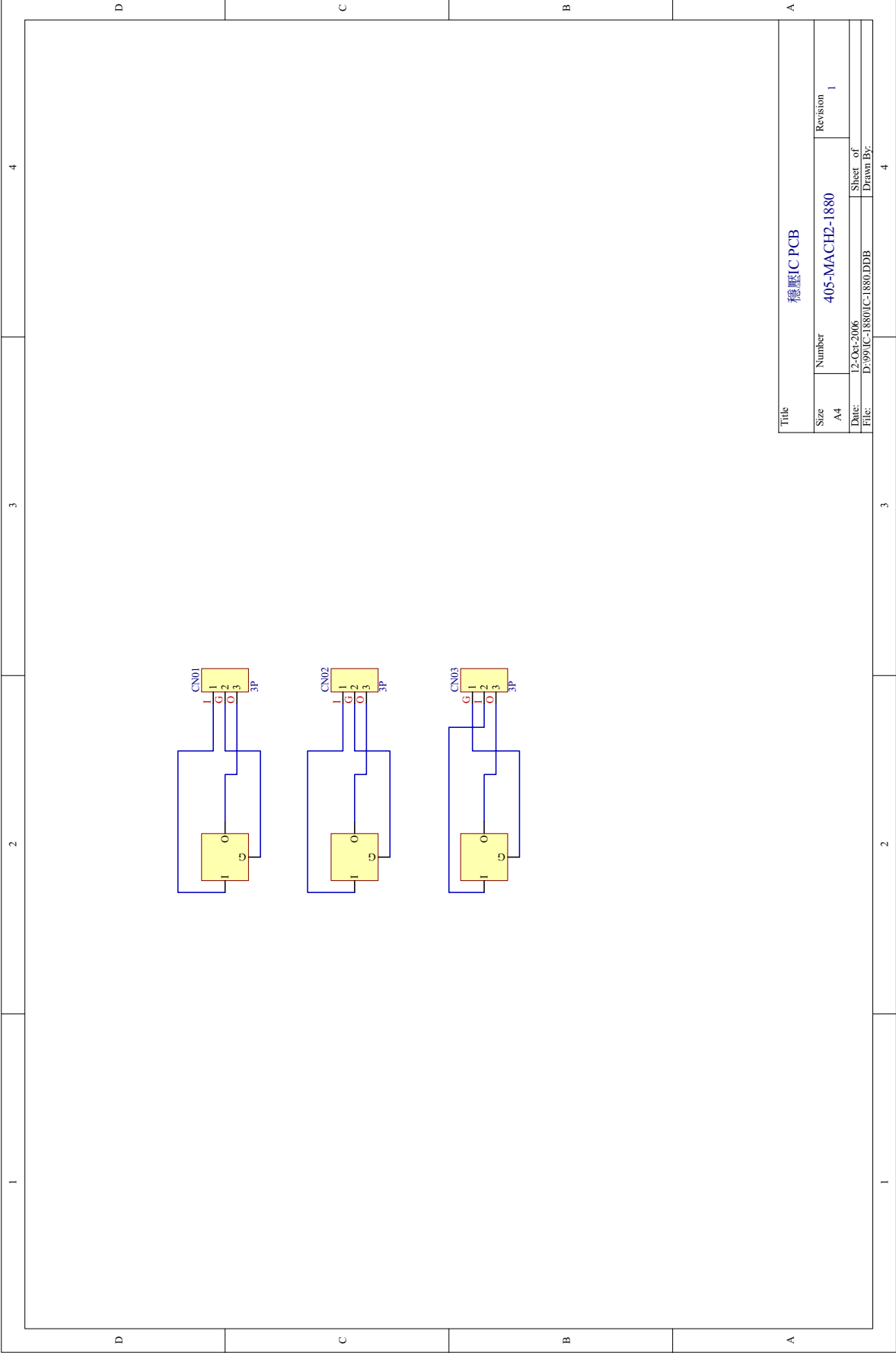
MIXER / 轉接 PCB (CPU)			
Title	Size	Number	Revision
	B	405-1400DSP-1861/1865	1
Date:	2-Mar-2007		Sheet of
File:	D:\99MIX-18-1\1\MIX-18-1.DDB		2/3
	Drawn By:		LEC



File	IO POWER JACK / AUX4 PCB		
Size	A2	Number	405-1400DSP-1867/1868/1869
Revision	2	Date	17.May.2007
Sheet of	8	Drawn By	LEC



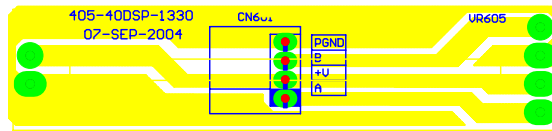
Title			
LED BAR PCB			
Size	Number	405-3433MK2-1218	Revision
A3			1
File	297AMFZ-004	Sheet 01	Part of
File	LED BAR PCB	Drawn by	RYUYUTIN



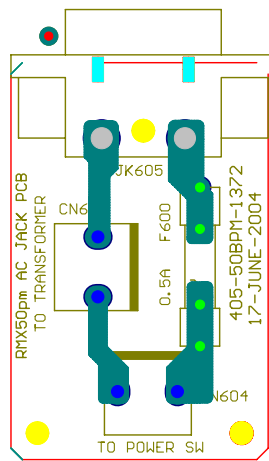
Title		穩壓IC PCB	
Size	Number	Revision	
A4	405-MACH2-1880	1	
Date:	12-Oct-2006	Sheet of	
File:	D:\99\IC-1880\IC-1880.DDB	Drawn By:	

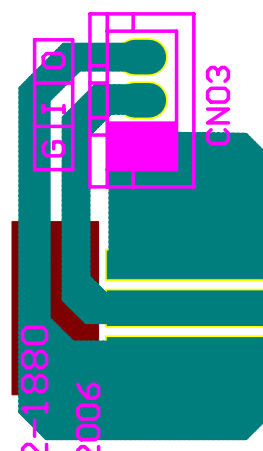
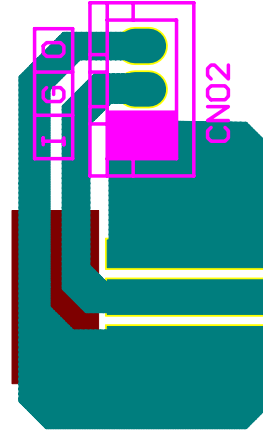
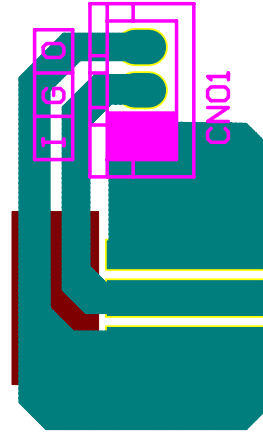
Printed Circuit Board Diagram



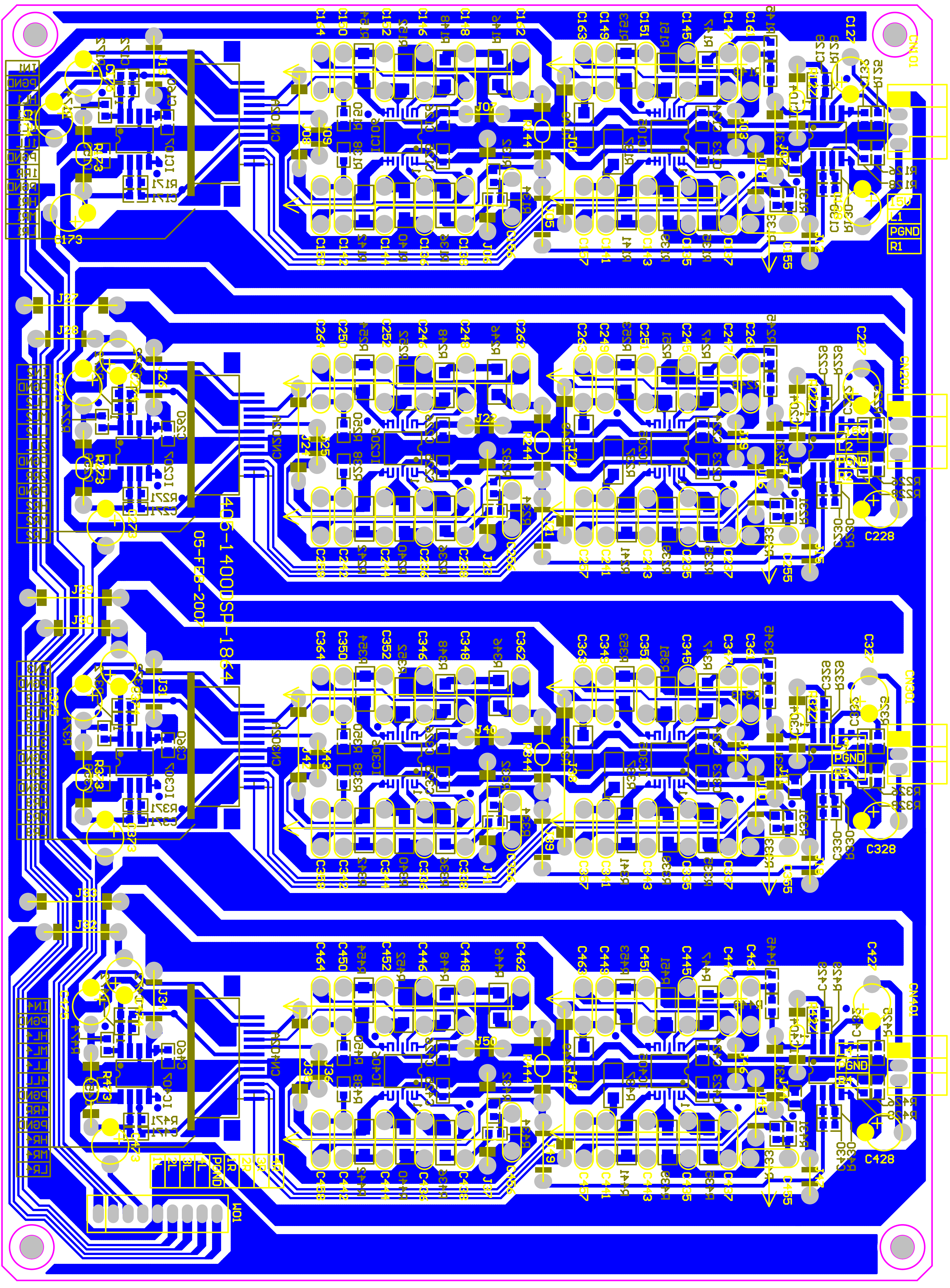


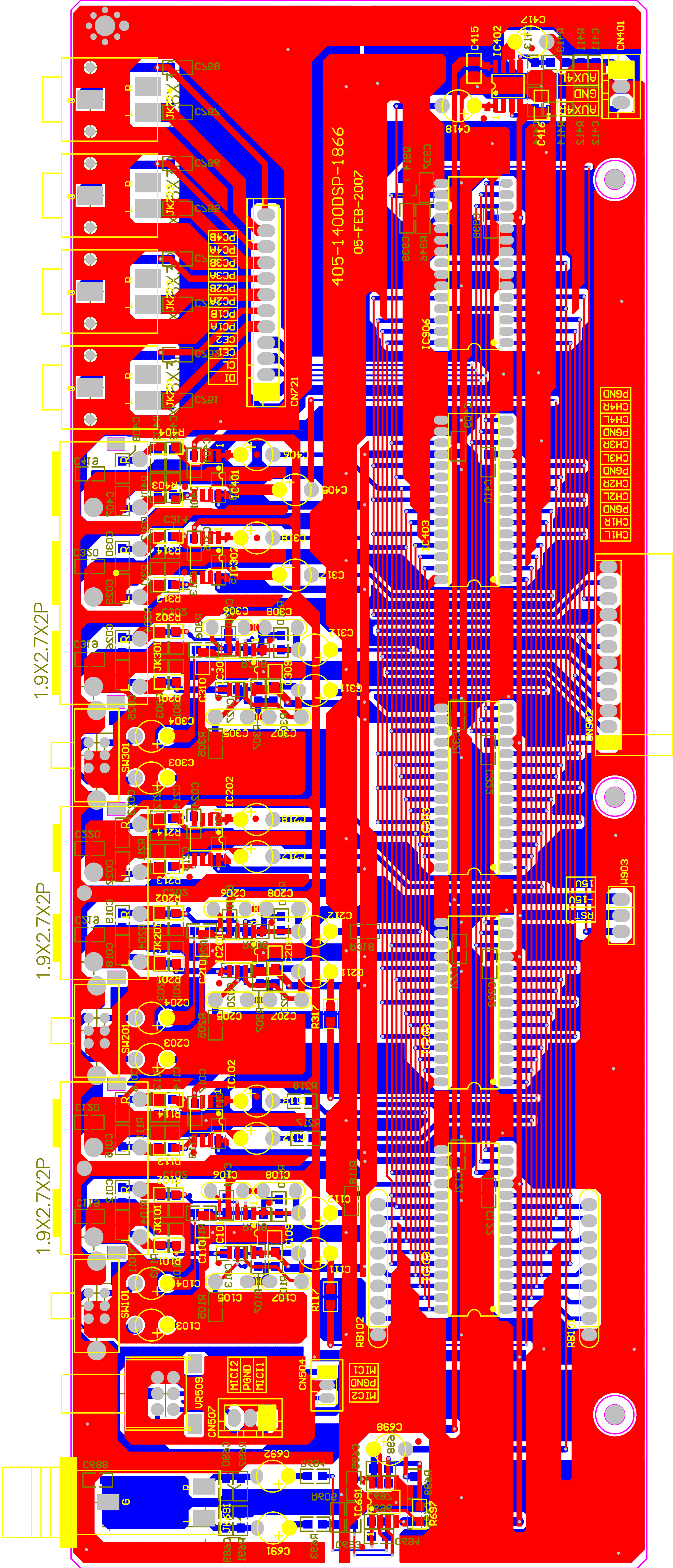
Printed Circuit Board Diagram





405-MACH2-1880
12-SEP-2006





1.9X2.7X2P

1.9X2.7X2P

1.9X2.7X2P

405-1400DSP-1866

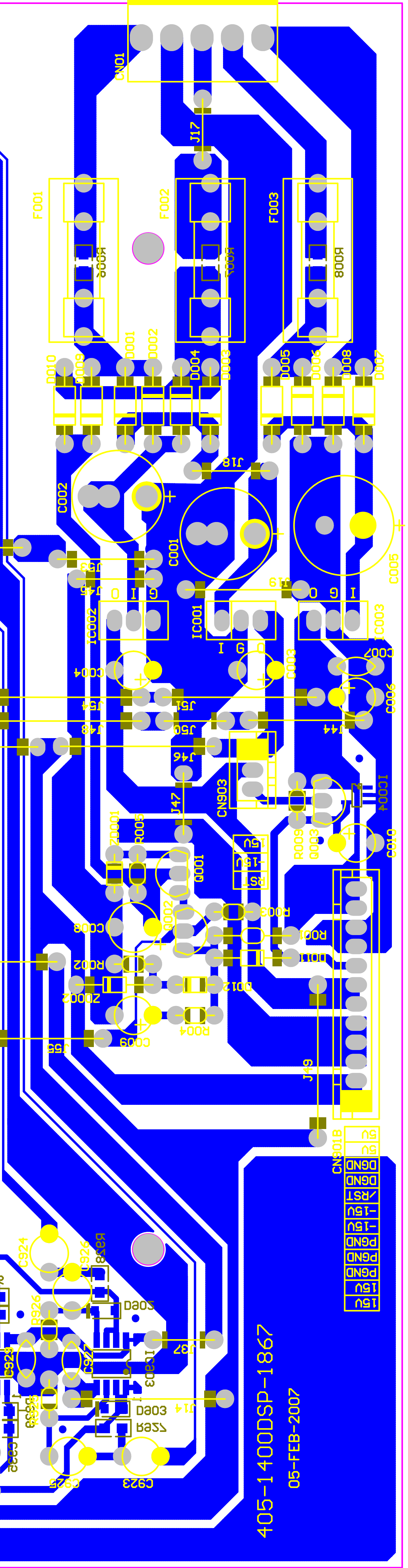
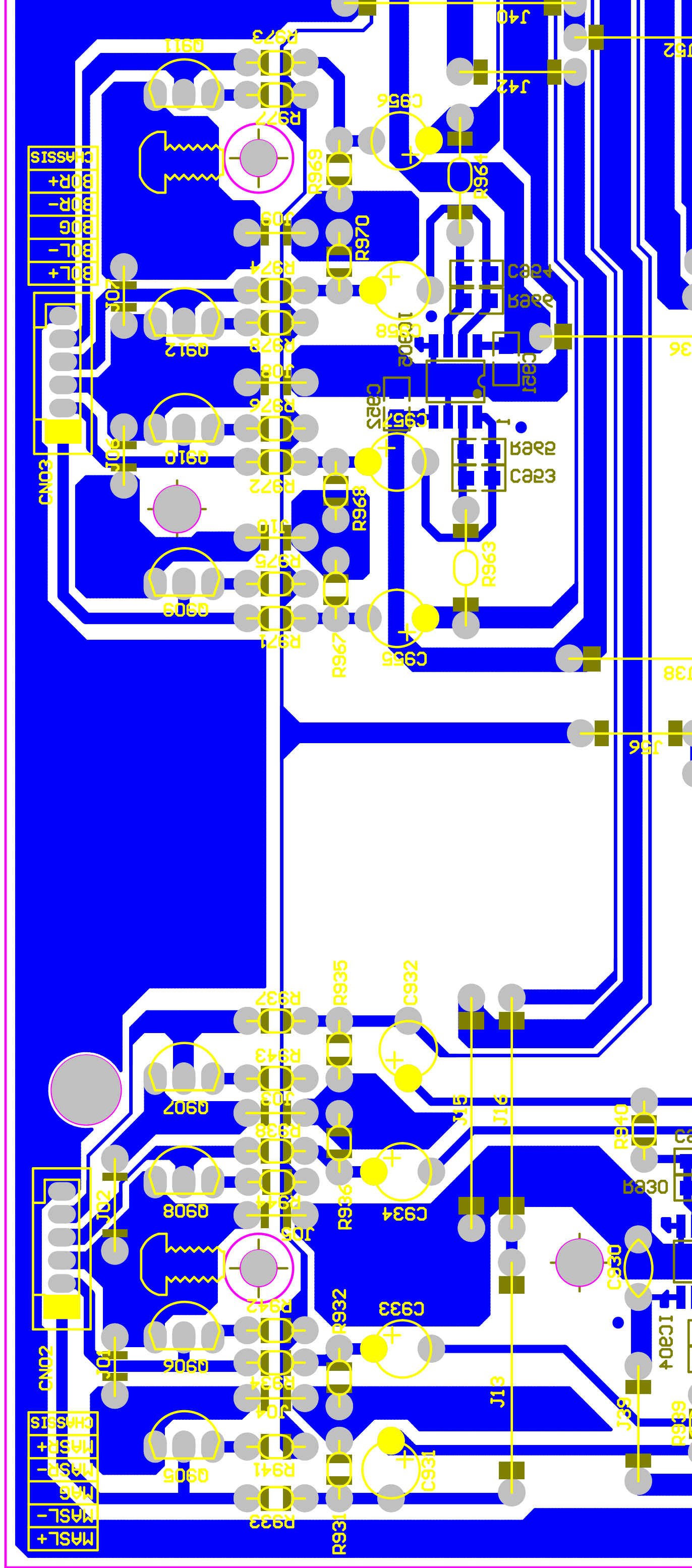
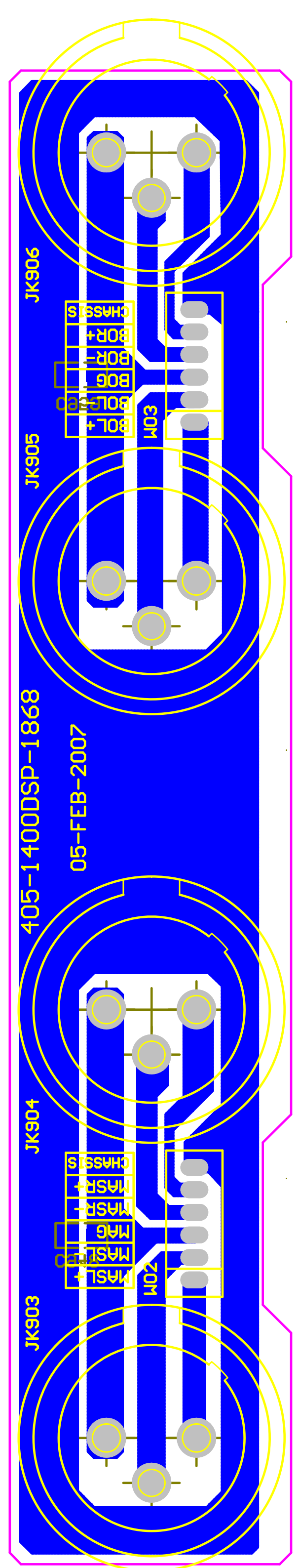
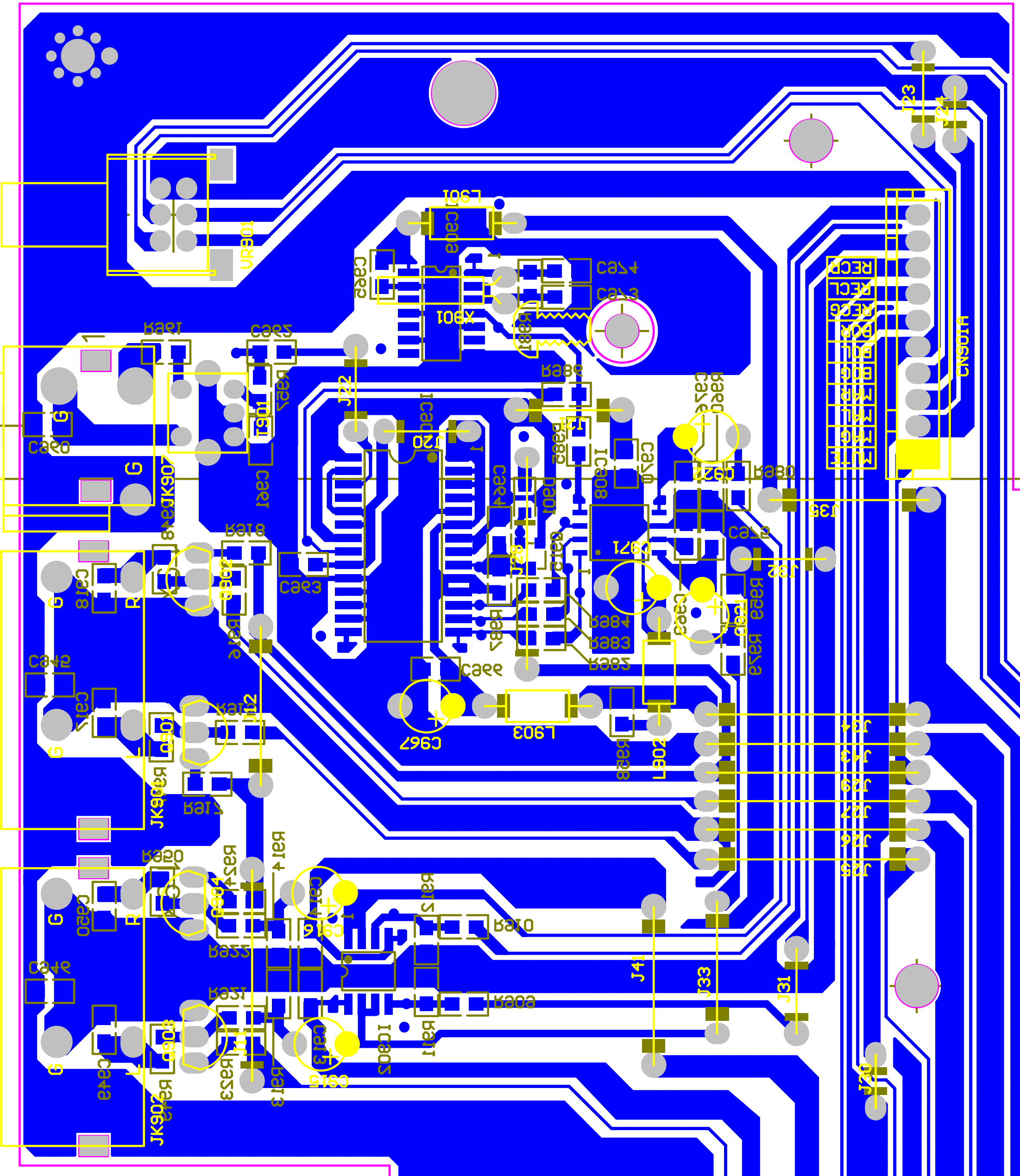
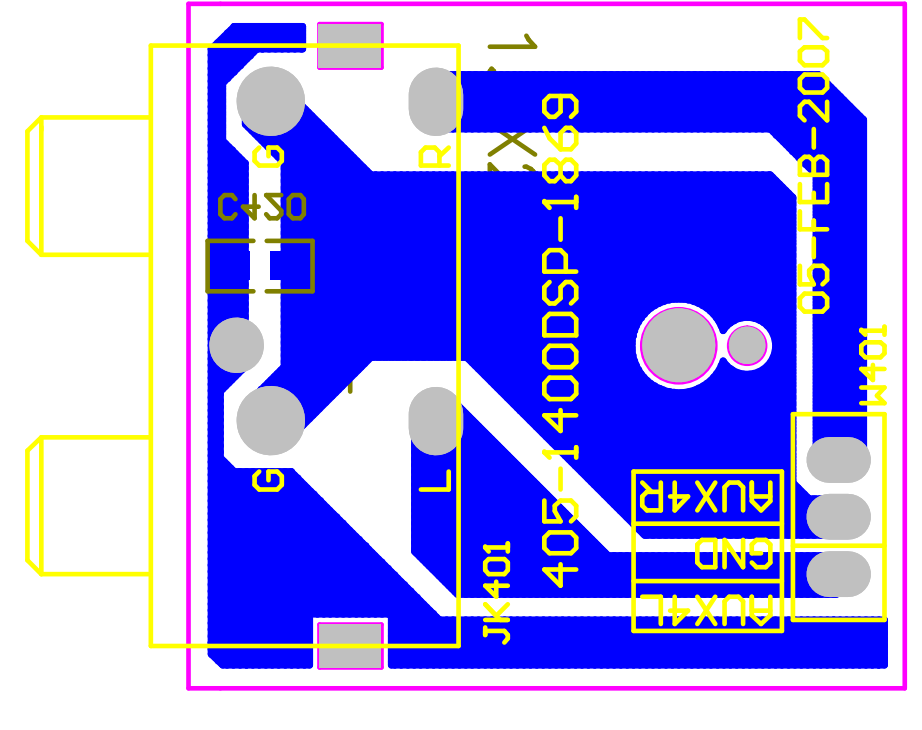
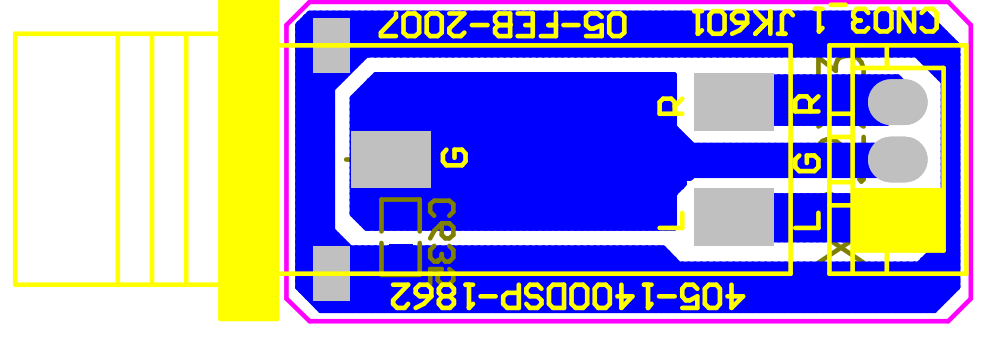
05-FEB-2007

CH1L
CH1R
PND
CH2L
CH2R
PND
CH3R
PND
CH4L
CH4R
PND

RST
M903

MIC1
PND
MIC2

CN401
AUX4
SIP4
SIP2
GND



405-1400DSP-1867
05-FEB-2007



